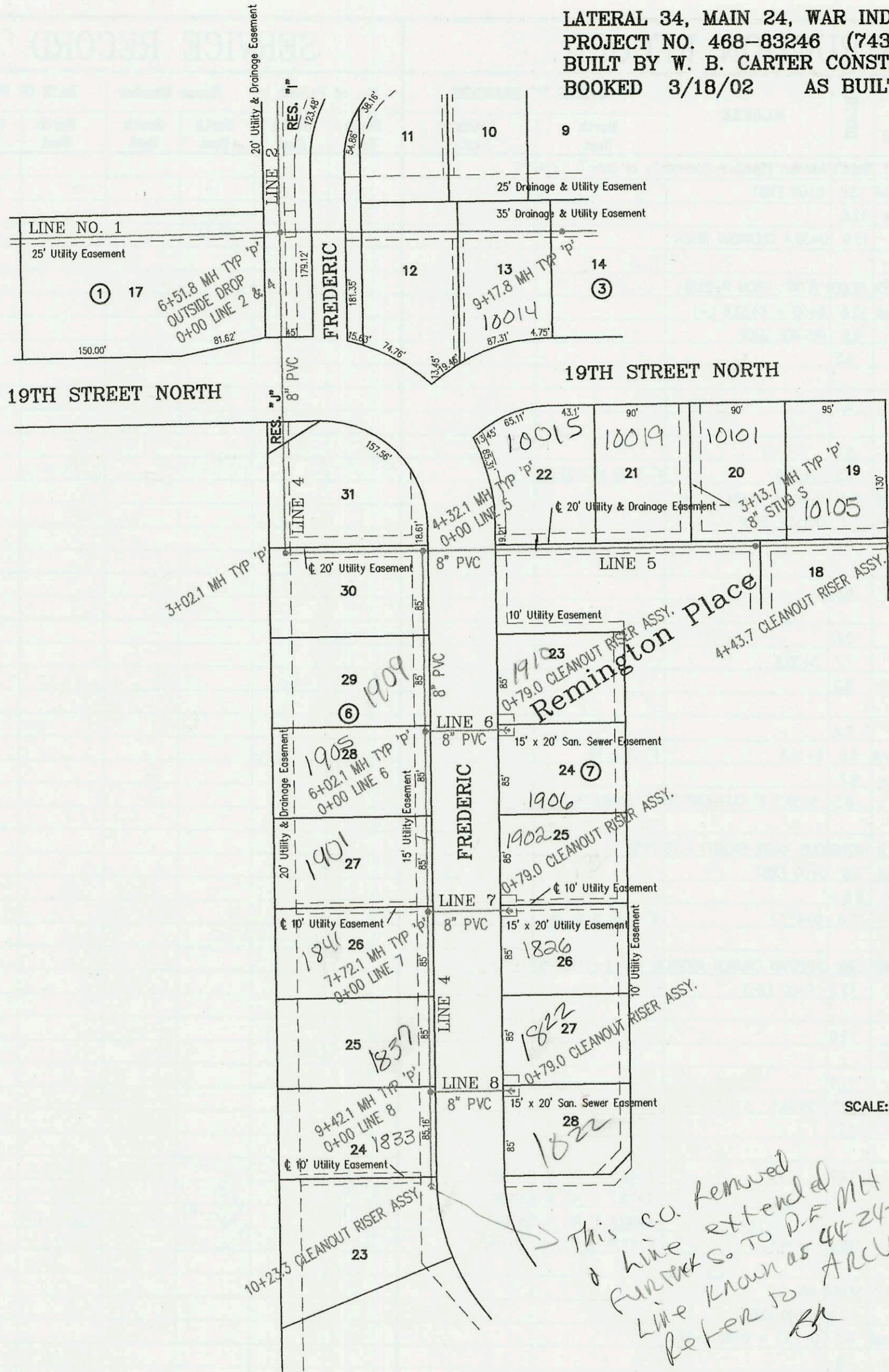
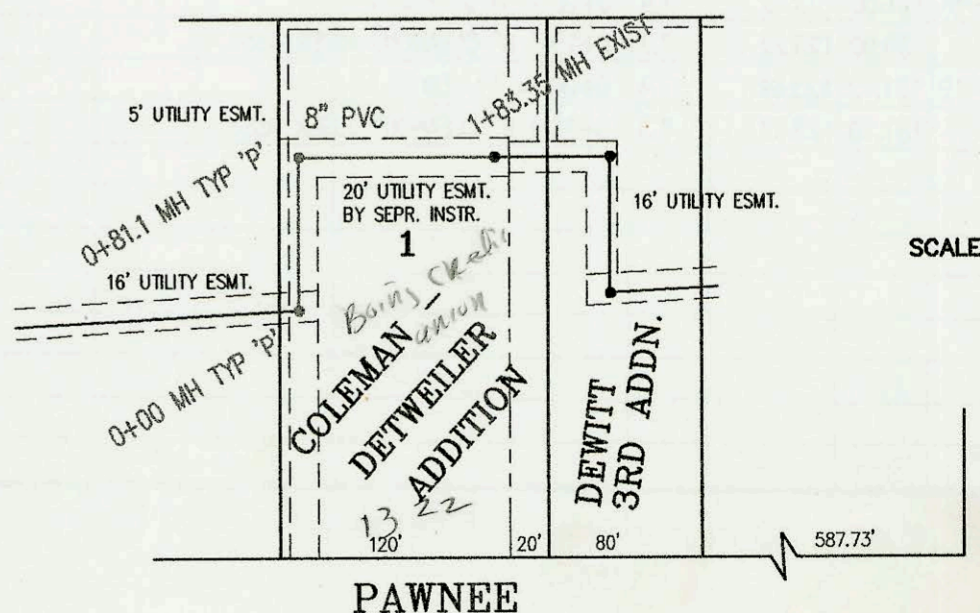


LATERAL 34, MAIN 24, WAR INDUSTRIES SEWER
 PROJECT NO. 468-83246 (743885)
 BUILT BY W. B. CARTER CONSTRUCTION CO.
 BOOKED 3/18/02 AS BUILT PER PLAN



*This C.O. removed
 a line extended
 further to D.F. MH
 line known as 44-24-015
 refer to ARCHIVE
 BK*

SANITARY SEWER RELOCATION OF
 LAT 39, SUB 2, SS #22 TO SERVE
 LOT 1, COLEMAN-DETWELLER ADDITION
 NEWMAN UNIVERSITY ADDITION
 PROJECT NO. 1184PPS
 BUILT BY W.B. CARTER CONSTRUCTION CO.
 BOOKED 4/2/02 PER AS BUILT PLAN



SENECA

