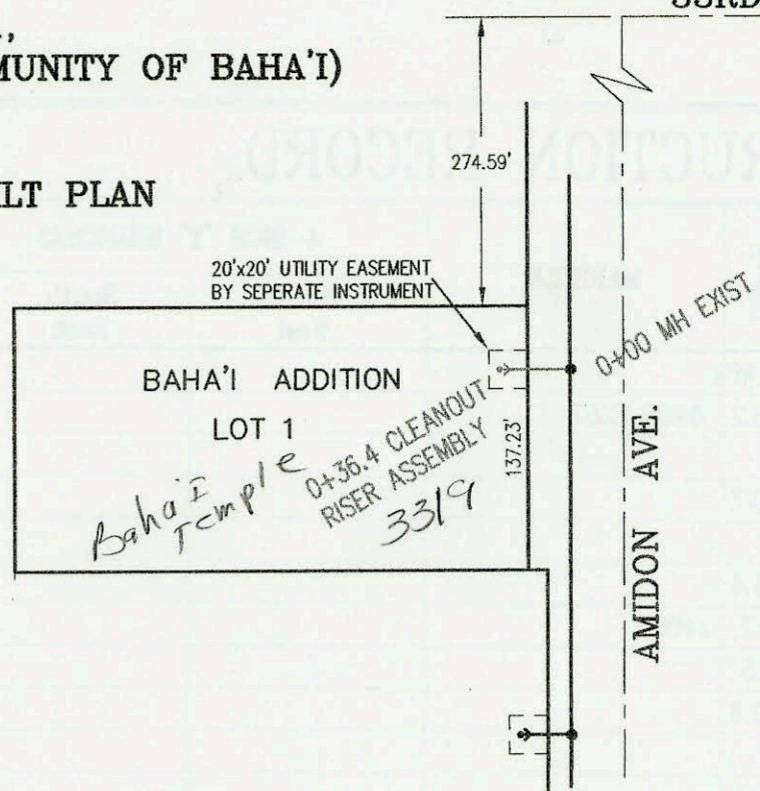
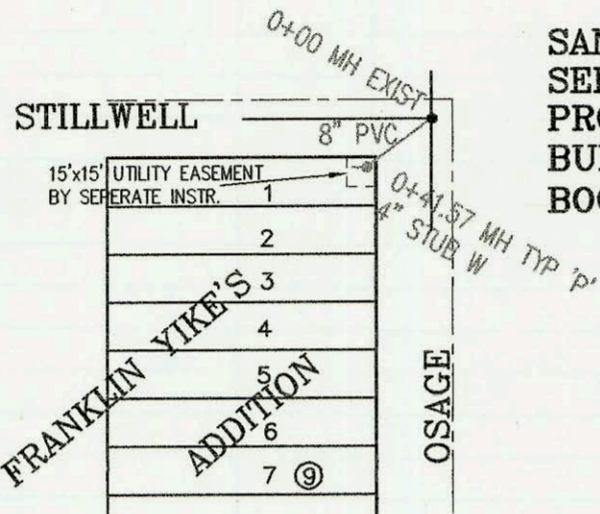


SANITARY SEWER TO SERVE LOT 1,
BAHA'I ADDITION (SPIRITUAL COMMUNITY OF BAHA'I)
PROJECT NO. 1194PPS
BUILT BY WICHITA EXCAVATION
BOOKED 4/9/02 PER AS BUILT PLAN



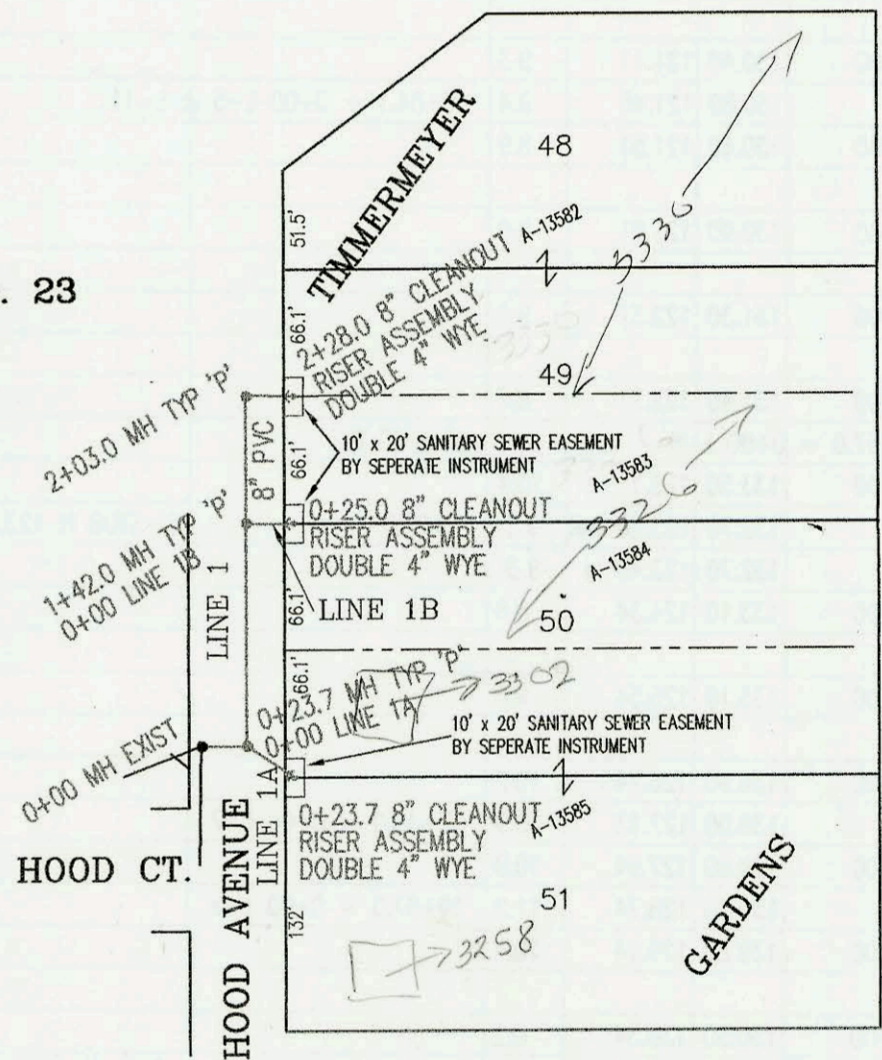
SCALE: 1" = 100'

SANITARY SEWER TO SERVE
SEDGWICK COUNTY HOUSEHOLD HAZARDOUS WASTE FACILITY
PROJECT NO. 1160PPS
BUILT BY McCULLOUGH EXCAVATION
BOOKED 4/22/02 PER AS BUILT PLAN



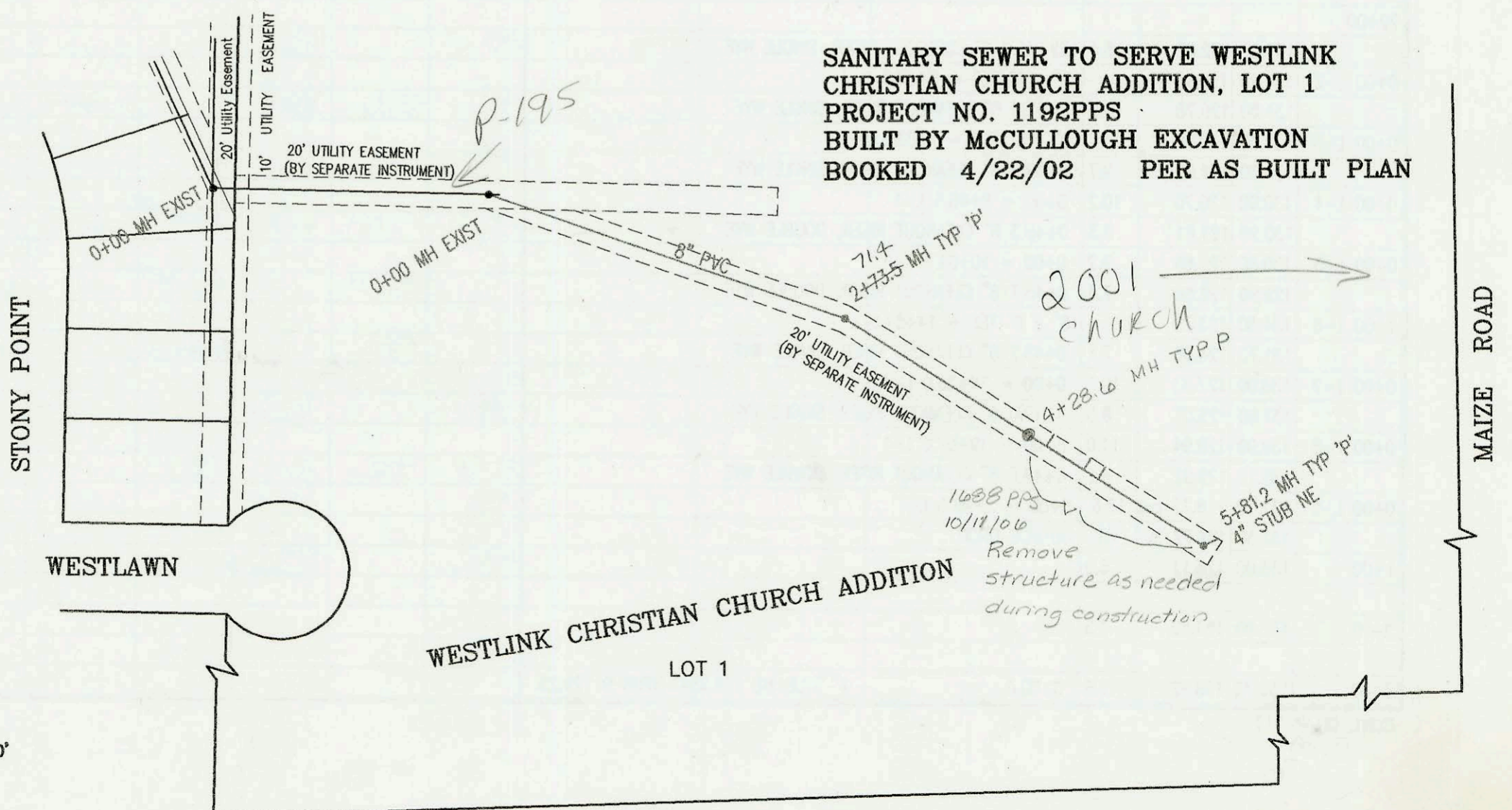
SCALE: 1" = 100'

LATERAL 140, MAIN 4, SANITARY SEWER NO. 23
PROJECT NO. 468-83267 OCA NO. 743874
BUILT BY WICHITA EXCAVATION
BOOKED 4/26/02 PER AS BUILT PLAN



SCALE: 1" = 100'

SANITARY SEWER TO SERVE WESTLINK
CHRISTIAN CHURCH ADDITION, LOT 1
PROJECT NO. 1192PPS
BUILT BY McCULLOUGH EXCAVATION
BOOKED 4/22/02 PER AS BUILT PLAN



SCALE: 1" = 100'

CONSTRUCTION RECORD					SERVICE RECORD							
STATION	ELEVATION		DEPTH	MANHOLE	4-INCH "Y" BRANCHES		No. of Permit		House Number		DATE OF PERMITS	
	GROUND	GRADE			North West	South East	North West	South East	North West	South East	North West	South East
Sanitary Sewer to serve Lot 1, Baha'l Addition (Spiritual Community of Baha'l) 1194PPS												
0+00	131.76	117.96 out	13.8	0+00 EXIST								
	131.76	119.18 in	12.6									
	132.27	119.30	13.0	0+36.4 CLEANOUT RISER			2002 01786		3374 Atmidan		6-27-02	
LATERAL 304, FOUR MILE CREEK SEWER (CONT. FROM P-218)												
0+00 L-10	132.20	119.64 out	12.6	0+00 = 6+33.6 L-1								
	132.20	125.64 in	6.6	OUTSIDE DROP								
1+00	134.10	127.64	6.5									
2+00	135.90	129.64	6.3									
3+00	137.70	131.64	6.1									
	138.20	131.72	6.5	3+04.0	4" STUB NE	132.05	2002 16014		15804 plymouth		6-13-02	
0+00 L-11	130.80	121.45 out	9.4	0+00 = 10+84.1 L-1								
	130.80	125.45 in	5.4	OUTSIDE DROP								
1+00	132.90	126.15	6.8									
2+00	133.60	126.85	6.8									
3+00	134.50	127.55	7.0									
	135.50	127.79	7.7	3+35.8								
4+00	136.10	128.05	8.0									
5+00	137.90	128.49	9.4									
	138.40	128.49 out	9.9	5+10.8	4" STUB NE							
	138.40	128.69 in	9.7									
	138.00	129.67	8.3	5+59.8 6" CLEANOUT RISER, SINGLE WYE								
SEDGWICK COUNTY HOUSEHOLD HAZARDOUS WASTE FACILITY (1160PPS)												
0+00	102.61	94.03 out	8.6	0+00 EXIST								
	102.61	96.03 in	6.6									
	103.40	96.45	7.0	0+41.57	4" STUB W	96.78						
SANITARY SEWER TO SERVE WESTLINK CHRISTIAN CHURCH ADDITION, LOT 1 (1192PPS)												
0+00	163.40	151.06	12.3	0+00 EXIST								
1+00	163.40	151.36	12.0									
2+00	163.60	151.66	11.9									
	164.40	151.87	12.5	2+73.5 2+71.4								
3+00	165.70	151.96	13.7									
4+00	167.00	152.26	14.7		4+46.5 4" RIS N	12V10H	2002 02371		2001 Maize Rd		8/29/02	
	168.20	152.35	15.85	4+28.6	4+78.7 4" RIS N	12V10H	2002 08369		2001 Maize Rd		8/28/02	
5+00	167.20	152.56	14.6		4+90.8 4" RIS N	12V10H	2002 02367		2001 Maize Rd		8/28/02	
	168.20	152.80	15.4	5+79.1	4" STUB NE	152.85 12V10H	2002 00129		2001 Maize Rd		2/19/02	
LATERAL 140, MAIN 4, SANITARY SEWER NO. 23												
0+00 L-1	131.35	122.93	8.4	0+00 EXIST								
	131.00	123.02 out	8.0	0+23.7 = 0+00 L-1A								
	131.00	123.12 in	7.9									
1+00	131.00	123.42	7.6									
	131.12	123.59 out	7.5	1+42.0 = 0+00 L-1B								
	131.12	123.69 in	7.4									
2+00	131.47	123.93 out	7.5	2+03.0								
	131.47	124.03 in	7.4									
	131.70	124.11	7.6	2+28.0 8" CLEANOUT RISER ASSY.								
0+00 L-1A	131.00	123.12	7.9	0+00 = 0+23.7 L-1								
	130.90	123.22	7.7	0+23.7 8" CLEANOUT RISER ASSY.			2002 01223	2002 01222	3352 Hood	3258 Hood	5-20-02	5-20-02
0+00 L-1B	131.12	123.69	7.4	0+00 = 1+42.0 L-1								
	131.10	123.77	7.3	0+25.0 8" CLEANOUT RISER ASSY.								

PSUR 2002-02370 8/29/02 2001 N Maize Rd (Grease Inter) The Fagan Co.