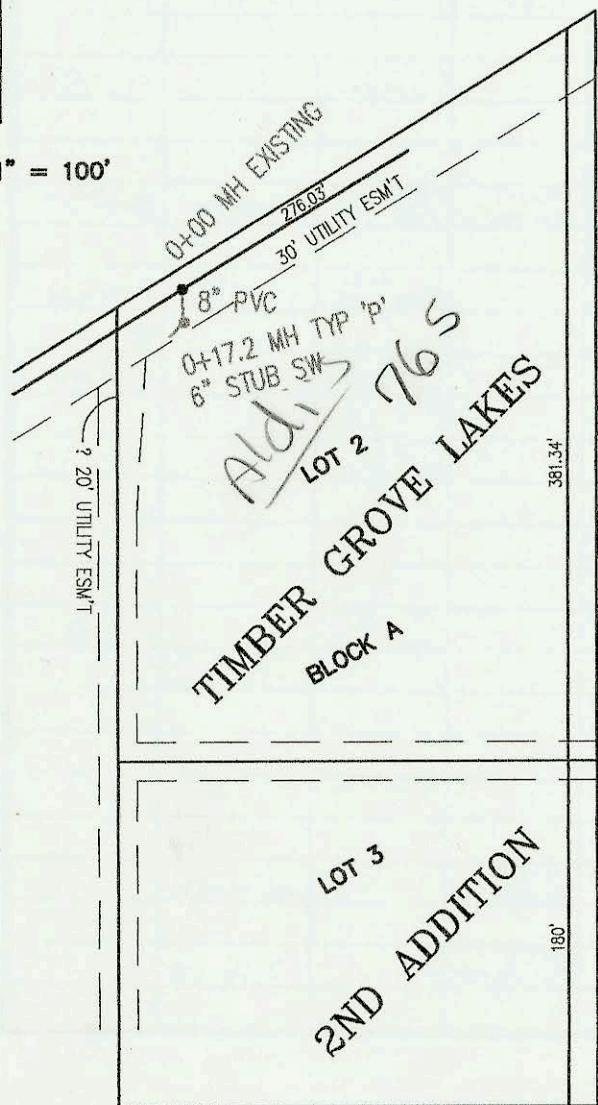


24" SANITARY SEWER RELOCATION AT THE CENTRAL MAINTENANCE FACILITY  
 PROJECT NO. 468-83367 (633739)  
 BUILT BY W. B. CARTER CONSTRUCTION CO.  
 BOOKED 7/15/02 PER PLAN

SCALE: 1" = 100'

SANITARY SEWER TO SERVE LOTS 2 & 3, TIMBER GROVE LAKES 2ND ADDITION  
 PROJECT NO. 1157PPS  
 BUILT BY HARRY'S CONSTRUCTION CO.  
 BOOKED 7/19/02 PER AS BUILT PLAN

SCALE: 1" = 100'



CONSTRUCTION RECORD					SERVICE RECORD							
STATION	ELEVATION		DEPTH	MANHOLE	4-INCH "Y" BRANCHES		No. of Permit		House Number		DATE OF PERMITS	
	GROUND	GRADE			North West	South East	North West	South East	North West	South East	North West	South East
24" SANITARY SEWER RELOCATION AT THE CENTRAL MAINTENANCE FACILITY												
0+00	102.90	89.92	13.0	0+00 EXIST								
1+00	103.00	89.93	13.1									
2+00	102.80	89.93	12.9									
3+00	103.30	89.94	13.4									
4+00	104.90	89.95	15.0	4+00.0	4" sch 40 PK 6" STUB W 97.60		2002 01450 2003 001450		1825 McLean (TRUST) 1835 McLean office		8-7-02 1-16-03	
5+00	103.50	89.95	13.6									
6+00	103.60	89.96	13.6									
	103.55	89.97	13.6	6+87.1			2002 02101		1825 McLean	garage	8-5-2002	
7+00	103.20	89.97	13.2									
8+00												
	103.90	89.97	13.9	8+02.0								
9+00	103.60	89.98	13.6									
	103.50	89.98	13.5	9+48.0								
LATERAL 23, COWSKIN INTERCEPTOR SEWER (CONT. FROM P-230)												
5+00	171.10	159.37	11.7				2003 01610		1145 bluegrass		6-26-03	
	171.90	159.52	12.4	5+61.5								
	171.90	159.62	12.3									
6+00	172.90	159.72	13.2		5+91 4" S 9V23H		2002 02030		14149 bluegrass		7-25-02	
	173.50	159.77	13.7	6+21.1								
	173.50	159.87	13.6		6+61 4" SW 10V25H		2002- 02671		14153 bluegrass		9-16-02	
7+00	175.20	160.07	15.1		7+43 4" SW 13V15H		2002 000101		14157 bluegrass		1-21-03	
	178.70	160.29	18.4	7+86.1 = 0+00 L-4A								
	178.70	160.39	18.3									
8+00	178.30	160.43	17.9									
	178.50	160.59	17.9	8+63.9								
	178.50	160.69	17.8									
9+00	177.90	160.79	17.1		9+10 4" NE 13V16H							
					9+46 4" SW 12V10H		2004 00689		14202 bluegrass		3-15-04	
10+00	176.00	161.03	15.0		10+16 4" NE 11V16H							
					10+60 4" SW 11V10H		2004 01961		14205 bluegrass		7-19-04	
11+00	175.50	161.29	14.2		10+82 4" NE 11V16H							
	176.00	161.30	14.7	11+05.2	10" STUB 27' W 161.40							
0+00 L-4A	178.70	170.00	8.7	0+00 = 7+86.1 OUTSIDE DROP								
1+00	179.40	170.40	9.0									
	179.70	170.51	9.2	1+26.2	8" STUB SW 170.61							
SS to serve Lots 2 & 3, Timber Grove Lakes 2nd Addn. (1157PPS)												
0+00	144.40	130.01	14.4	0+00 EXIST								
	144.40	131.34	13.1									
	145.90	131.68	14.2	0+17.2	6" STUB SW 131.85							
Reconstruction of part of Sanitary Sewer No. 22, from Sewage Treatment Plant No. 1 to N. of Pawnee (CONT FROM P-231)												
0+00 L-4	96.30	84.82	11.5	0+00 = 16+95.23 L-2								
	95.62	84.95	10.7	0+21.65	8" SE 86.20							
	95.62	85.05	10.6									
	95.67	85.30	10.4	0+63.13	8" N 85.40							
0+00 L-5	94.27	82.35	11.9	0+00 = 14+32.73 L-2								
	94.27	85.33	8.9	OUTSIDE DROP								
0+10.0	94.20	85.36	8.8	CONNECTION TO 8" SS								

LINE 4  
(CONT.)