

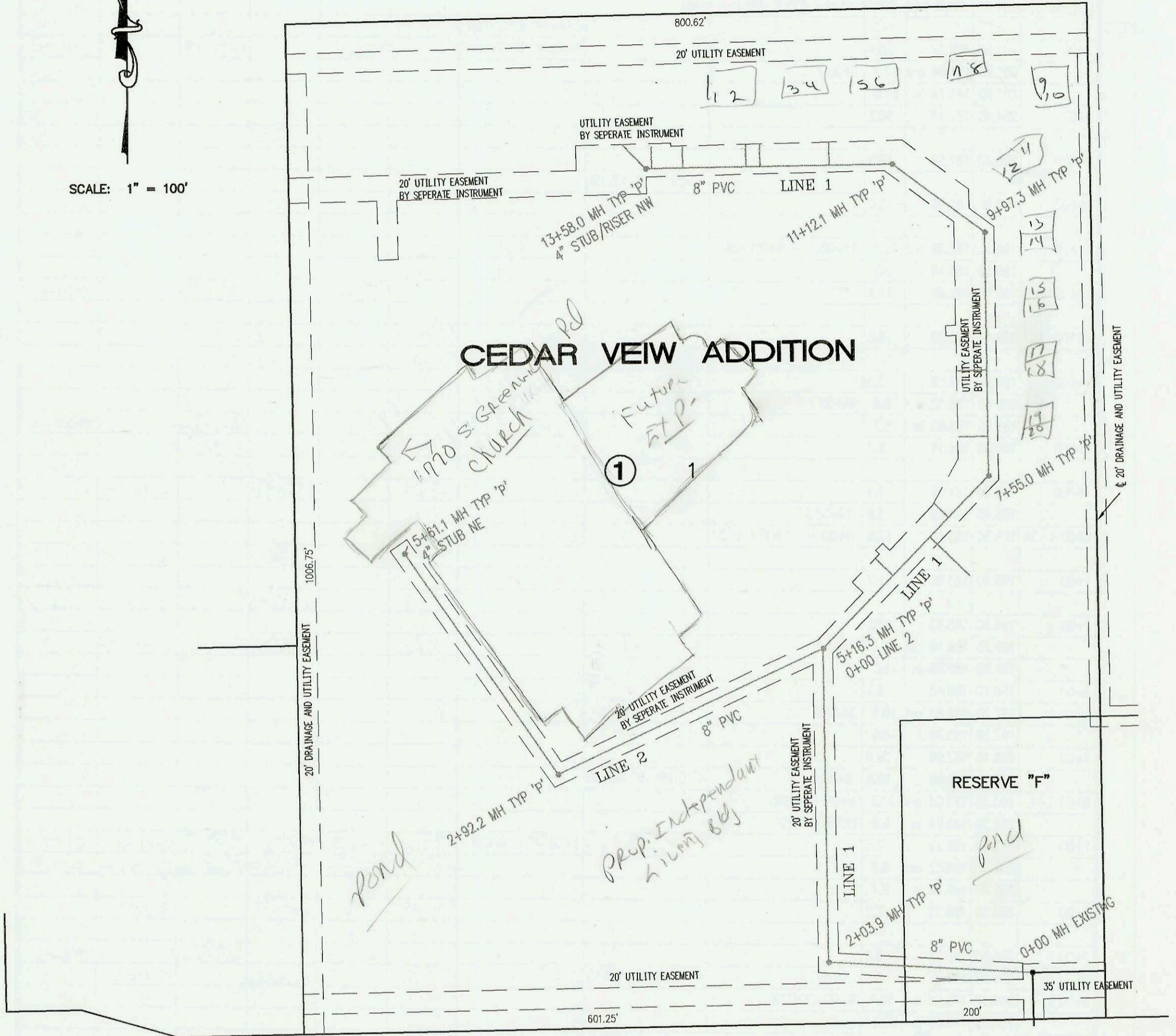
LATERAL 300, FOUR MILE CREEK SEWER
 PROJECT NO. 468-83222 OCA NO. 743901
 BUILT BY K.C. EXCAVATING
 8/27/02 PER AS BUILT PLAN

P-238A

KANSAS TURNPIKE

SCALE: 1" = 100'

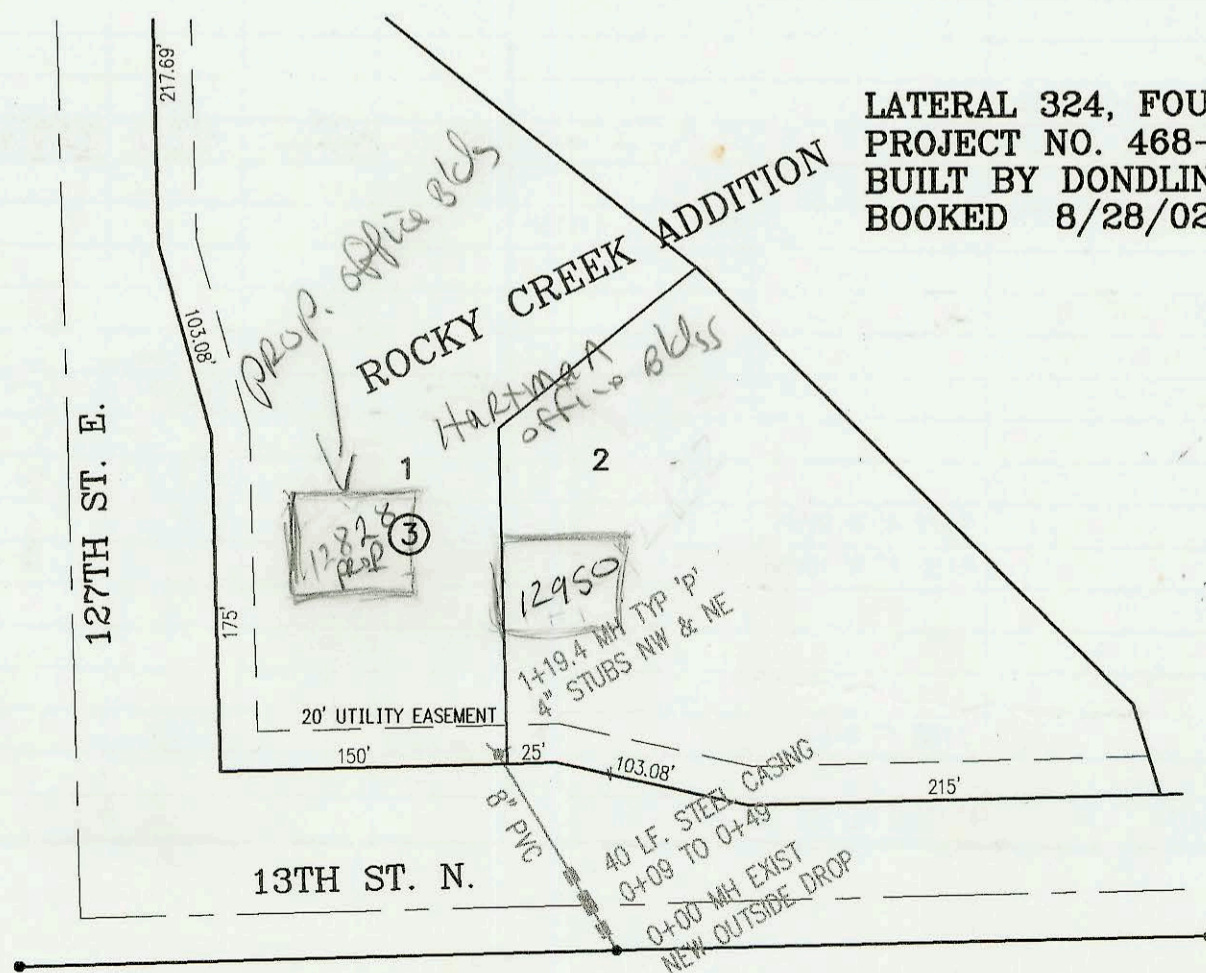
GREENWICH



LINCOLN

LATERAL 324, FOUR MILE CREEK SEWER
 PROJECT NO. 468-83346 OCA NO. 743898
 BUILT BY DONDLINGER AND SONS CONSTRUCTION CO.
 BOOKED 8/28/02 PER PLAN

SCALE: 1" = 100'



CONSTRUCTION RECORD					SERVICE RECORD							
STATION	ELEVATION		DEPTH	MANHOLE	4-INCH "Y" BRANCHES		No. of Permit		House Number		DATE OF PERMITS	
	GROUND	GRADE			North West	South East	North West	South East	North West	South East	North West	South East
LATERAL 300, FOUR MILE CREEK SEWER												
0+00 L-1	158.28	146.80	11.5	0+00 EXISTING								
1+00	156.70	147.20	9.5									
2+00	157.60	147.60	10.0									
	157.91	147.62 out	10.3	2+03.9								
	157.91	147.72 in	10.2									
3+00	158.60	148.10	10.5									
4+00	159.50	148.50	11.0									
5+00	160.20	148.90	11.3									
	162.60	148.97 out	13.6	5+16.3 = 0+00 L-2								
	162.60	149.07 in	13.5									
6+00	161.00	149.40	11.6		6+17 4" NW 7V24H							
					6+70 4" SE 7V55H							
7+00	161.60	149.80	11.8		6+97 4" NW 7V20H							
	163.60	150.02 out	13.6	7+55.0								
	163.60	150.12 in	13.5									
8+00	162.80	150.30	12.5		7+94 4" W 8V29H							
					8+60 4" W 8V29H							
9+00	164.00	150.70	13.3									
	167.40	151.09 out	16.3	9+97.3								
	167.40	151.19 in	16.2									
10+00												
11+00	166.10	151.60	14.5									
	166.60	151.65 out	15.0	11+12.1								
	166.60	151.75 in	14.8		11+75 4" N 8V22H							
12+00	164.40	152.10	12.3		12+44 4" N 8V22H							
					12+58 4" N 8V22H							
					13+21 4" N 5V22H							
13+00	162.70	152.50	10.2		13+52 4" N 5V22H							
	161.99	152.73	9.3	13+58.0	4" STUB/RISER NW 5V34H							
0+00 L-2	162.60	149.07	13.5	0+00 = 5+16.3 L-1								
1+00	160.20	149.47	10.7									
2+00	160.60	149.87	10.7									
	161.05	150.24 out	10.8	2+92.2								
	161.05	150.34 in	10.7									
3+00	160.20	150.37	9.8									
4+00	161.10	150.77	10.3									
5+00	161.60	151.17	10.4									
	162.10	151.41	10.7	5+61.1	4" STUB NE 151.81							
LATERAL 324, FOUR MILE CREEK SEWER												
0+00	157.27	139.16 out	18.1	0+00 EXIST								
	157.27	148.87 in	8.4	OUTSIDE DROP								
1+00	156.90	149.27	7.6									
	157.35	149.35	8.0	1+19.4	4" STUB NW 149.69	4" STUB NE 149.69						
LATERAL 1, MAIN 11, FOUR MILE CREEK SEWER (CONT. FROM P-239)												
0+00 L-5A	200.30	176.92 out	23.4	0+00 = 1+38.4 L-5								
	200.30	193.00 in	7.3	OUTSIDE DROP	0+24 4" E 4V13H							
1+00	200.50	194.21	6.3									
	202.40	195.00 out	7.4	1+65.1	4" sch 40 WC 1+54.1 tap							
	202.40	195.10 in	7.3									
2+00	203.00	195.45	7.6		4" sch 40 WC 2+18.7 tap							
	202.70	196.20	6.5	2+73.7								
0+00 L-5B	195.50	178.06 out	17.4	0+00 = 3+97.6 L-5								
	195.50	188.00 in	7.5	OUTSIDE DROP								
1+00	197.10	189.35	7.8									
	198.30	190.00	8.3	1+48.5								

2003 2003 2003
 2003 2003 2003
 01321 01321 01321

1750 #16
 ST. CONN. H
 1750 #16
 GP. PERMIT

5-15-03
 5-15-03

2002 2002
 02270 02270

1705.1
 ST. CONN. H
 1705.1

6-19-02

2003 2003 2003
 00323 00004 12828
 0137H 12950
 0137H 0137H

2-5-03 1-2-03

2003 2003
 01474 01474

2510
 10344

2525
 DAVIN

6-4-03

2003 2003 2003
 01346 03078 2306
 1+54.1 tap

2517
 DAVIN

5-19-03 2-1-06

2003 2003 2003
 01232 00161 2502
 2+18.7 tap

2513
 DAVIN

5-7-03 3-2-06