

GENERAL NOTES:

- The Contractor shall comply with all applicable safety regulations. All construction shall be completed following current City Standard Specifications and Special Provisions.
- Contractor will be required to provide notice to utility companies a minimum of seventy-two (72) hours prior to any excavation, as follows:

Kansas One-Call	687-2470
-----------------	----------

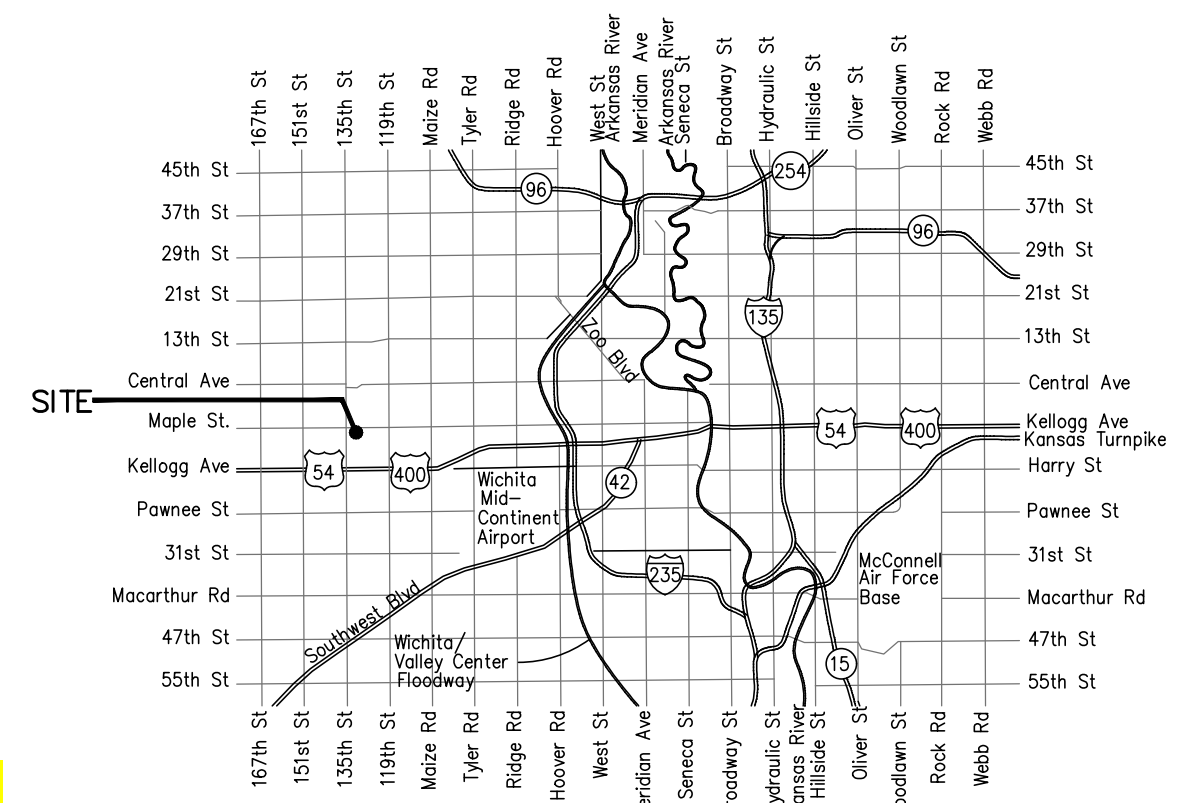
The Contractor must notify the following in case of an emergency:

AT&T	1-800-246-8464
Black Hills Energy	1-800-694-8989
City of Wichita Water & Sewer	1-316-219-8921
City of Wichita Stormwater	1-316-268-4090
City of Wichita Traffic	1-316-268-4034
Cox Communications	1-888-249-3530
Kansas Gas Service	1-888-482-4950
Westar Energy	1-800-544-4857
- Utility service lines, poles, etc. are to be adjusted as necessary by others prior to construction unless the plans specifically call for their adjustment by the Contractor or unless the plans specifically identify a utility to be adjusted by its owner during construction. Existing utilities and their location, as shown on the plans, represent the best information obtainable for design. The Contractor will be required to work around existing utilities within the right-of-way which do not conflict with proposed construction.
- Rubble from the removal of miscellaneous structures and excess excavation which is to be wasted shall be disposed of on sites to be provided by the Contractor. These sites shall be approved by the Engineer as to suitability, appearance and site location. Locations, in the opinion of the Engineer, that will leave an unsightly appearance will not be approved. All disposal sites must be approved by the Kansas Department of Health and Environment. Material either stockpiled or disposed of in a flood plain will require a Kansas State Board of Agriculture permit. Any material dumped in waters of the United States or wetlands is subject to U.S. Corps of Engineers permitting regulations. Any material buried or stockpiled beyond approved construction limits will require additional archaeological investigations unless buried in a previously approved borrow location.
- Trees and shrubs in public right-of-way which are in direct conflict with proposed new construction shall be removed by the Contractor with the City Engineer's approval. Trees and shrubs which are not in direct conflict with proposed new construction shall be saved and protected from damage.
- The Contractor shall give all property owners and/or tenants of developed property abutting the construction of this project a minimum of ten (10) days notice prior to start of construction.
- The Contractor shall be responsible for preserving property irons. The Contractor will be required to re-establish any property irons which are damaged or destroyed by his construction operations. Such irons shall be re-established by a licensed land surveyor in accordance with state laws.
- The Engineering Division shall field locate water valves one time during construction when requested by the Contractor. It shall be the Contractor's responsibility to preserve such field locations during the construction process. Water valves, valve boxes or fire hydrants damaged during construction shall be repaired by Contractor at his own expense. Valve boxes and water meters within the project limits shall be adjusted to match final grades by the contractor.
- The Contractor shall notify the inspecting engineer and Dawnita Reinhardt at 316-650-0740 with the City of Wichita with the anticipated construction start date and notify them of project completion. Staking and inspection for this project will be the responsibility of the Contractor.
- If traffic will be impacted by construction, a traffic control plan must be submitted and approved by the City Traffic Engineer at traffic@wichita.gov before construction can begin. The Contractor shall be responsible for all traffic control measures to facilitate construction. All construction zone markings and signage shall conform to the latest version of the Manual on Uniform Traffic Control Devices (MUTCD) as published by the US Dept. of Transportation, Federal Highway Administration. All costs associated with construction markings and signage shall be the Contractors responsibility.
- All elevations shown are NAVD 88.
- All areas disturbed during construction that will not be under proposed pavement shall be restored to match existing conditions.

- Any sidewalk, drive approach, or street pavement removed to construct project must have a pavement cut permit and be replaced by the City contractor. Permits can be obtained by calling 316-268-4501 or 316-268-4480.
- All applicable fees (tap, equity, in lieu of & main benefit) must be paid before any connections can be made on this project. Quotes can be obtained on fees by calling 316-268-4555.
- City maintenance of storm sewer ends at the last structure in the easement or right-of-way.
- All stubs and capped pipes shall be located with green plastic tape in the same manner as risers.
- Connecting to Existing Manholes:
Prior to laying sewer lines using existing stubs in existing manholes, the Contractor shall expose and verify the elevation, grade and alignment of existing stubs and notify the Engineer of any deviation from the plans. Where the stub is unusable due to elevation grade or alignment, the Contractor shall remove the stub and plug the hole, and reshape the existing manhole invert to provide smooth flow. Where connecting to an existing manhole that does not have an existing stub, the Contractor shall core cut into existing manhole wall to make connection using approved water stop gasket, and reshape the existing manhole invert to provide smooth flow. The cost to connecting to existing manholes is incidental to the project.
- Contractor shall limit the extent of trench open overnight and weekends to less than 50 feet.
- Contractor shall provide positive drainage away from all manhole covers.
- The Contractor shall prevent any construction debris from entering the existing sanitary sewer during construction.
- The Contractor shall be responsible for maintaining continuous flow of sewage through construction. Contractors proposed method of maintaining sewage flow shall be submitted and approved by the Sewer Maintenance Division (316-268-4073) prior to starting and by-passing of sewage flows.
- Any over excavation from manhole and pipe removal shall be backfilled with AB-3 compacted to 90-95% ASTM D698.
- The Contractor shall protect from damage and support existing utilities through construction as approved by the utility owner and the Engineer at the contractors expense.

SANITARY SEWER to serve **AUBURN HILLS COMMERCIAL ADDITION, LOT 4** 13353 WEST MAPLE STREET CITY OF WICHITA, KANSAS 67235

Gary Janzen, P.E. City Engineer
PPS-2020-034089 (184011)



Vicinity Map

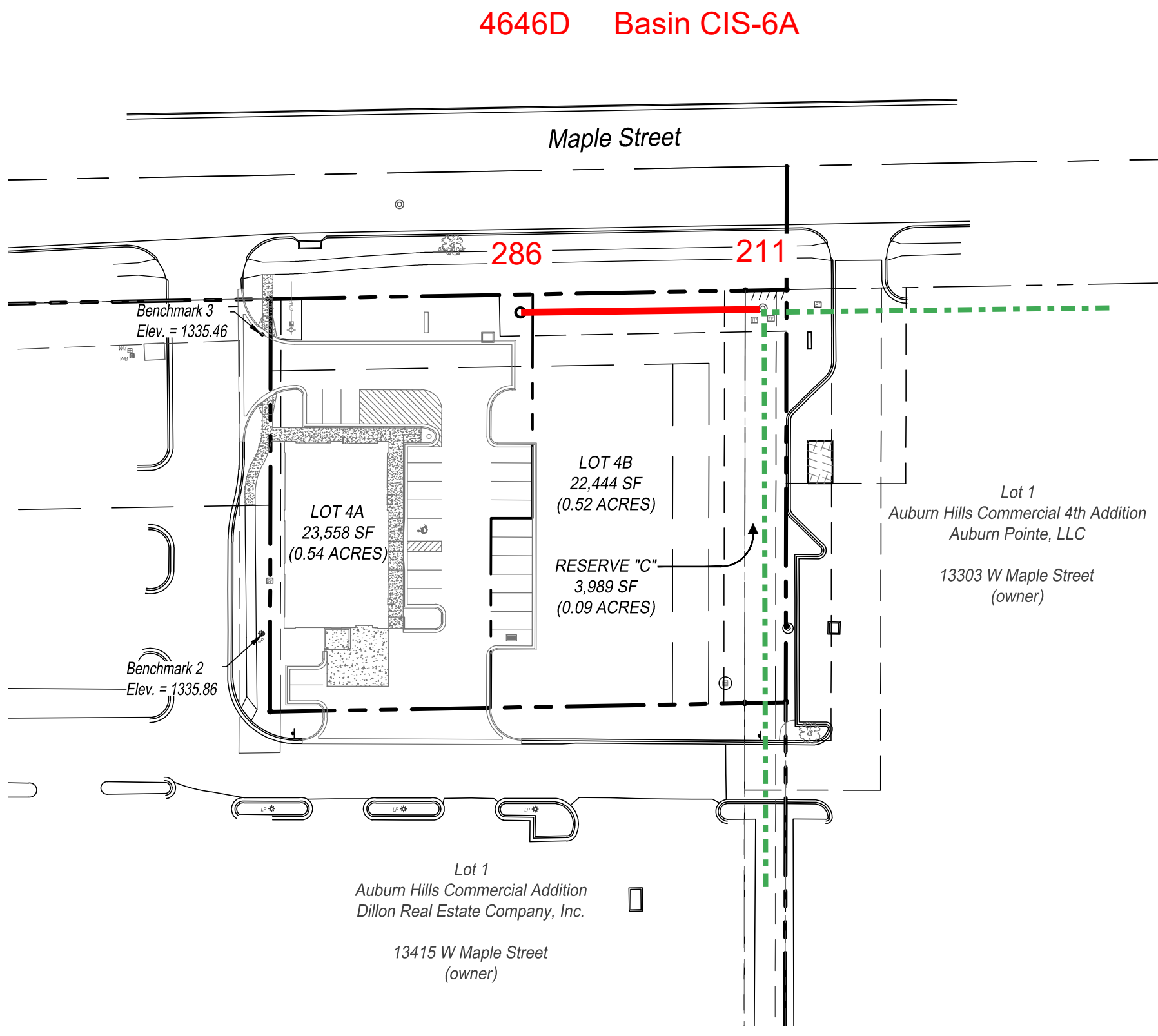
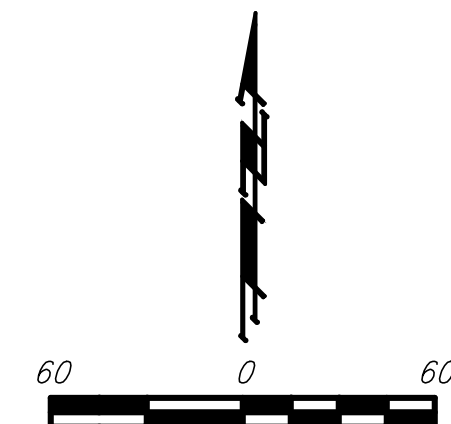
D. Reinhardt - City of Wichita, Inspector
Stub
Release Date: 6/3/2021
apr 6/4/2021

AS BUILTS

Contractor: **McCullough Exc. 5-27-21**

Project Inspector: **John Schuller**

KEMILLER ENGINEERING PA
117 E. Lewis, Wichita, KS 67202 (316)264-0242



Sheet Index

- Title Sheet
- Site Plan/Location Map/Profile
- Erosion Control Plan
- 10 Erosion Control/Sanitary Sewer Details
- Plat

APPROVED AS NOTED
BY WICHITA PUBLIC WORKS
ENGINEERING DIVISION

Engineering approved by Shawn Mellies on this day the 23rd of March, 2021

Utilities approved by LaDonna Malrenz on this day the 23rd of March, 2021

NOTE TO CONTRACTORS

Inspection and testing for this project is to be provided by a Licensed Consulting Engineering Firm under contract with the Owner/Developer. Said inspection to be in accordance with the City of Wichita standard construction engineering practices and certified by a Licensed Professional Engineer in the state of Kansas. No work shall be performed the Contractor without such inspection nor shall any work be commenced without written authorization by City Engineering. All Construction and Materials shall comply with the current City of Wichita Specifications and Standards and Special Provisions. (on file and available at Wichita.gov).

An approved copy of these plans signed by City staff are required on-site.

Benchmarks

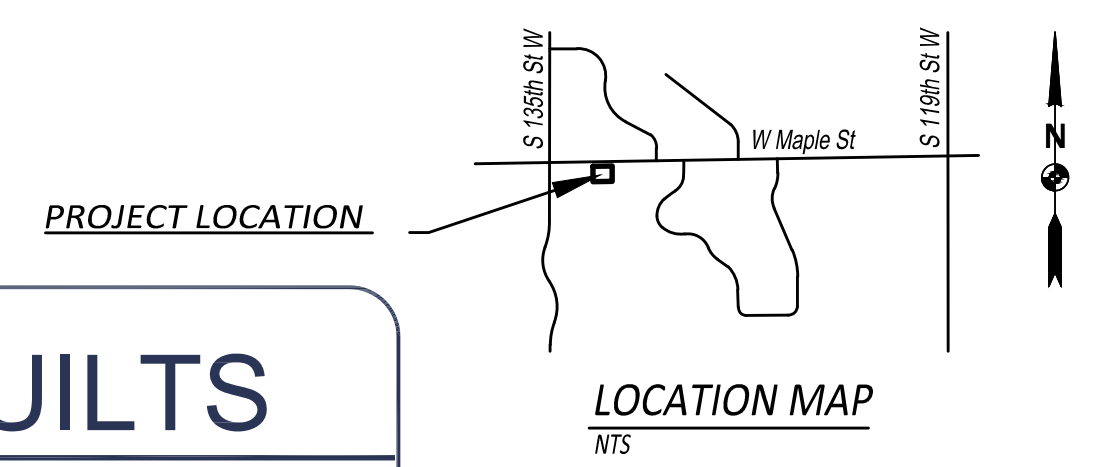
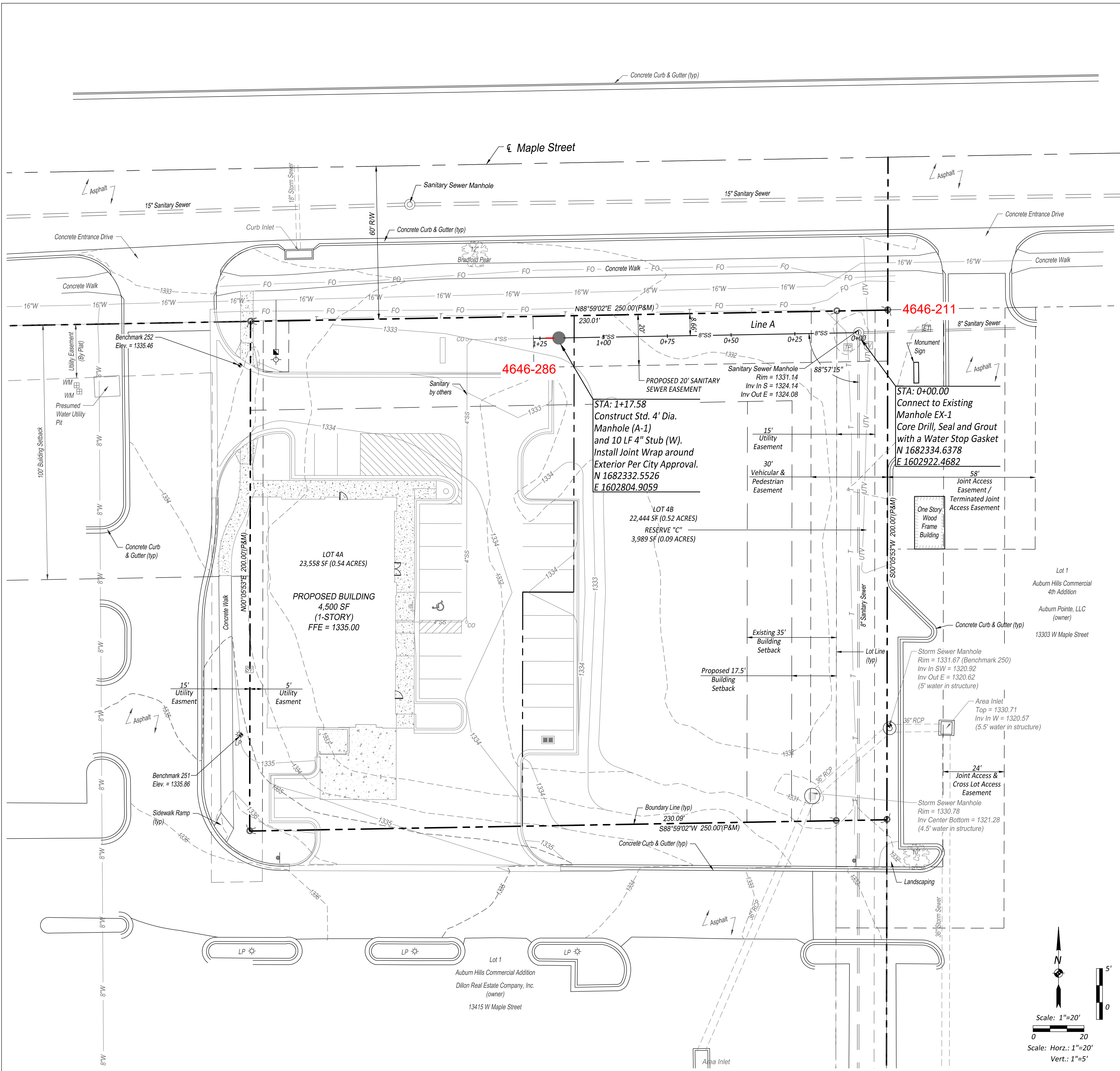
BENCHMARK 1, CHISELED SQUARE ON NORTH RIM OF SANITARY SEWER MANHOLE. ELEVATION = 1331.67, NAVD 88 DATUM

BENCHMARK 2, CHISELED SQUARE EAST TOP CONCRETE LIGHT POLE BASE. ELEVATION = 1335.86, NAVD 88 DATUM

BENCHMARK 3, CHISELED SQUARE EAST TOP CONCRETE LIGHT POLE BASE. ELEVATION = 1335.46, NAVD 88 DATUM

November, 2020
SBB ENGINEERING, LLC
101 S. KANSAS AVENUE
TOPEKA, KS 66603



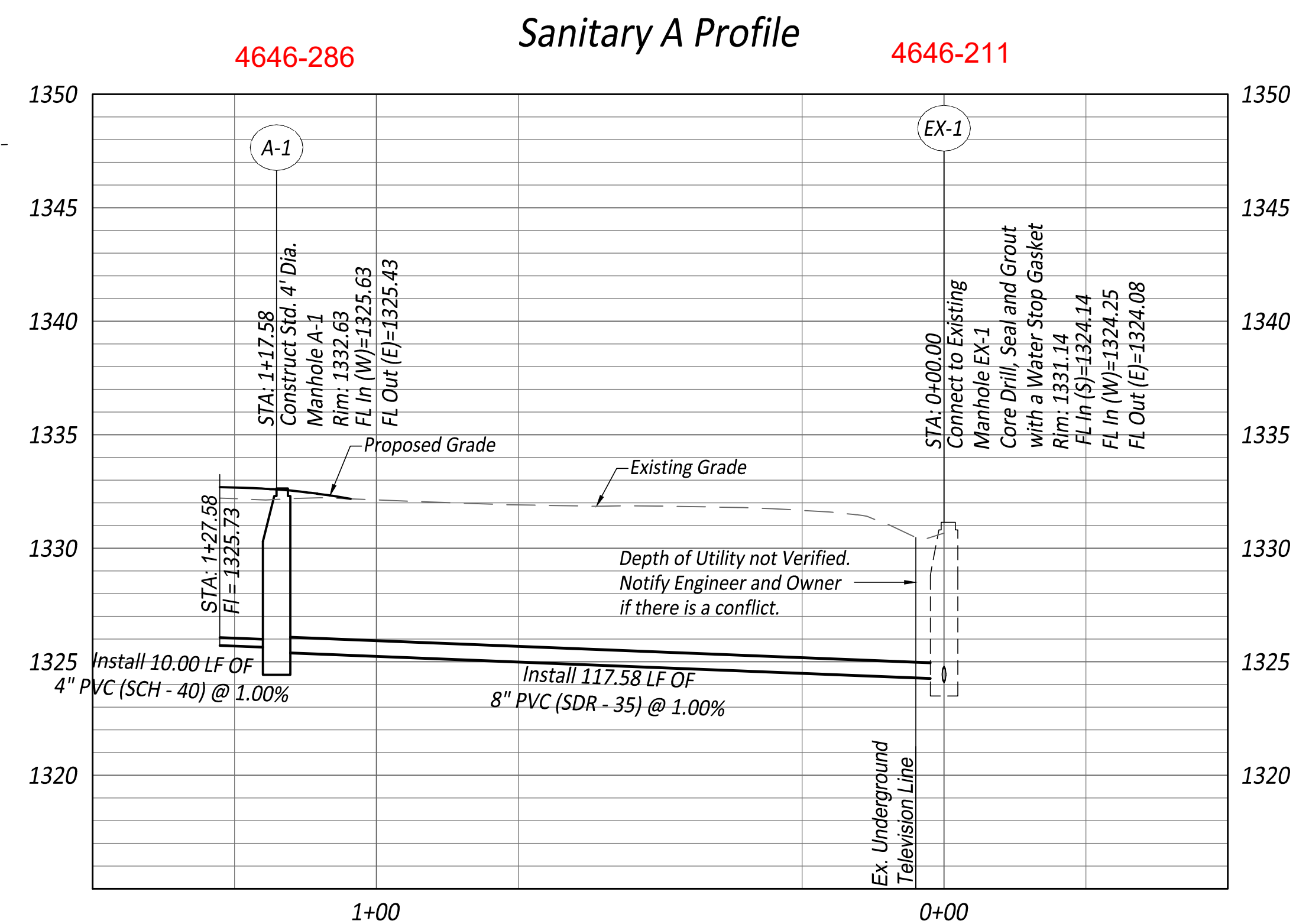


AS BUILTS

5-27-21

KEMILLER
ENGINEERING PA

117 E. Lewis,
Wichita, KS 67202 (316)264-0242



LEGEND:

--- 36" RCP ---	EXISTING STORM SEWER
--- 8" Sanitary Sewer ---	EXISTING SANITARY SEWER
--- 8"W ---	EXISTING WATERLINE
--- 16"W ---	EXISTING OVERHEAD POWER
--- OHP ---	EXISTING UNDERGROUND POWER
--- UGP ---	EXISTING TELEPHONE LINE
--- T ---	EXISTING GASLINE
--- G ---	EXISTING FIBER OPTIC LINE
--- 8"SS ---	PROPOSED SANITARY SEWER

BENCHMARKS:

THE BEARING SYSTEM FOR THIS SURVEY IS BASED ON THE FINAL PLAT FOR AUBURN HILLS COMMERCIAL ADDITION.

VERTICAL CONTROL DATUM:

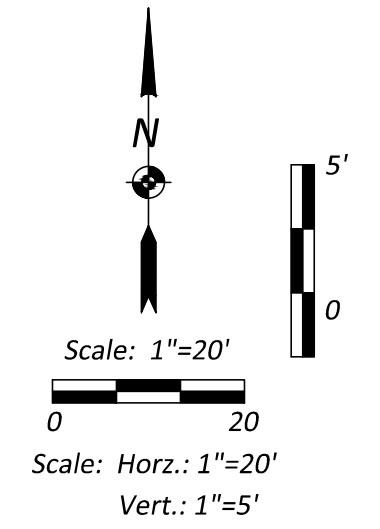
BENCHMARK 1, CHISELED SQUARE ON NORTH RIM OF SANITARY SEWER MANHOLE.
ELEVATION = 1331.67, NAVD 88 DATUM

BENCHMARK 2, CHISELED SQUARE EAST TOP CONCRETE LIGHT POLE BASE.
ELEVATION = 1335.86, NAVD 88 DATUM

BENCHMARK 3, CHISELED SQUARE EAST TOP CONCRETE LIGHT POLE BASE.
ELEVATION = 1335.46, NAVD 88 DATUM

SUMMARY OF QUANTITIES:

ITEM NO.	DESCRIPTION	UNIT AMT.	UNIT DESC.
1	8" SANITARY SEWER PVC MAIN	118	L.F.
2	4" SANITARY SEWER PVC PIPE (SCH 40)	10	L.F.
3	4' DIA. STANDARD MANHOLE (0'-6")	1	EA.
4	CONNECT TO EXISTING	1	EACH
5	EROSION CONTROL	1	L.S.



SBB
ENGINEERING

101 S. Kansas Ave.
Topeka, KS 66603
Ph: 785.215.8630

PUBLISHED: 12/11/20

REVISIONS:

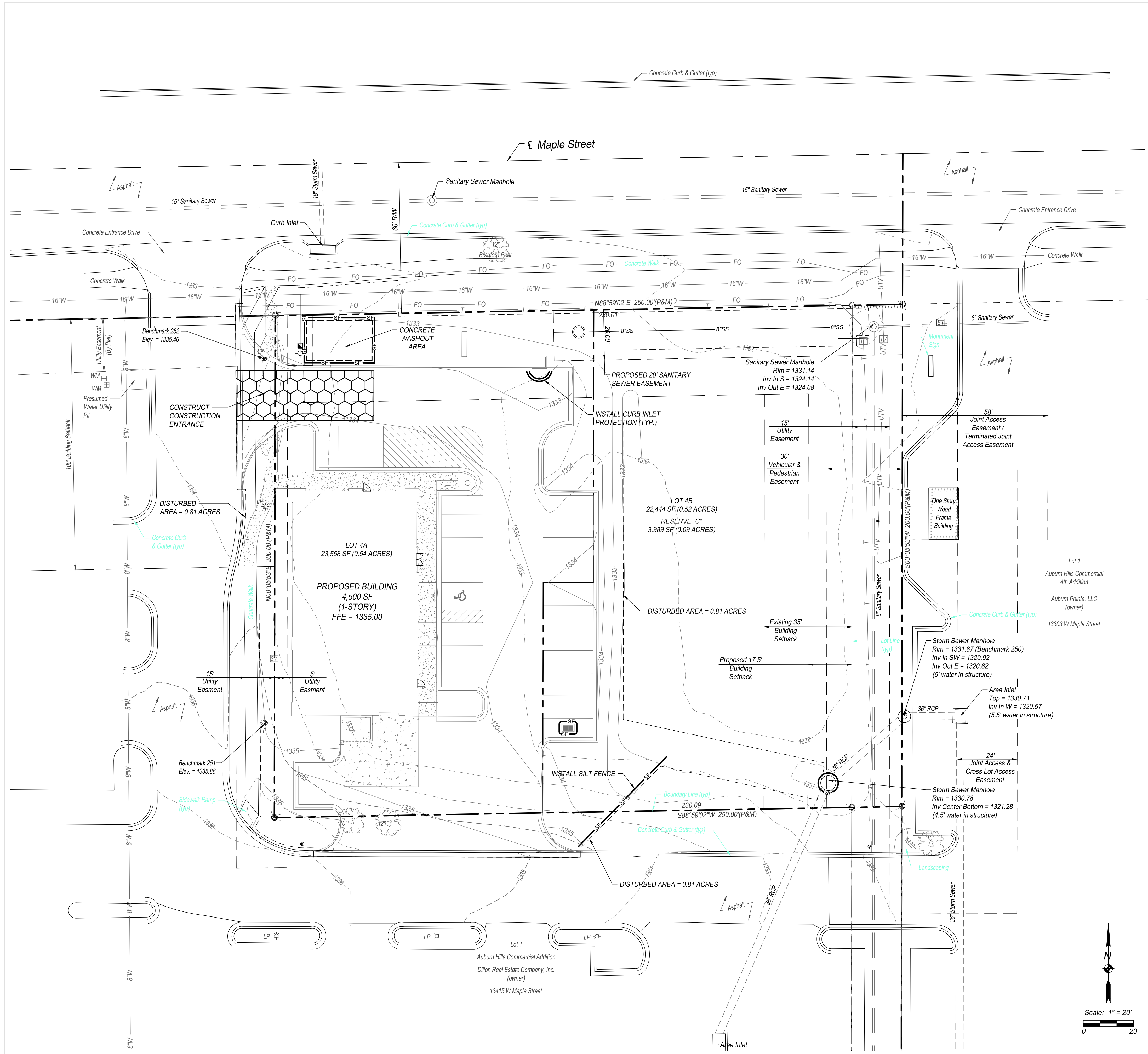
NO.	DESCRIPTION

DRAWING INFORMATION:

SITE PLAN / LOCATION MAP / SANITARY PROFILE

2

X:11 SBB Drawings\0-2020\20-081 Wall Dev 13365 Maple Wichita.dwg Design\Site Construction Plans\Public Sanitary Set\20-081_Site.dwg, 1/8/2021 2:50:10 PM



GENERAL NOTES:

1. THE LOCATION OF ALL OVERHEAD AND UNDERGROUND UTILITIES MAY VARY FROM WHAT IS INDICATED IN THESE PLANS. IT SHALL BE THE CONTRACTOR'S RESPONSIBILITY TO COORDINATE WITH THE UTILITY OWNER TO LOCATE AND FLAG ALL UNDERGROUND UTILITIES WHETHER INDICATED OR NOT. NO EXCAVATION WILL BE PERMITTED IN THE AREA OF UNDERGROUND UTILITIES UNTIL ALL SUCH UTILITIES HAVE BEEN LOCATED AND IDENTIFIED TO THE SATISFACTION OF ALL PARTIES AND THEN ONLY WITH EXTREME CARE TO AVOID ANY POSSIBILITY OF DAMAGE TO THE UTILITY.
2. ALL DISTURBED AREAS THAT ARE NOT PAVED OR LANDSCAPED SHALL BE SEEDED, FERTILIZED AND MULCHED IN ACCORDANCE WITH THE SPECIFICATIONS.

EROSION CONTROL GENERAL NOTES:

1. THE CONTRACTOR SHALL BE RESPONSIBLE FOR IMPLEMENTING, MONITORING AND MAINTAINING BEST MANAGEMENT PRACTICES (BMP'S) AT ALL TIMES DURING THE CONSTRUCTION ON THIS PROPERTY.
2. PRIOR TO COMMENCEMENT OF EARTHWORK OPERATIONS, CONTRACTOR SHALL INSTALL PERIMETER WATTLES AND CONSTRUCTION ENTRANCE AS SHOWN ON THE PLAN. THE INLET PROTECTION AND ADDITIONAL WATTLES WITHIN WORK AREA SHALL BE INSTALLED IMMEDIATELY AFTER INSTALLATION OF THE INLETS AND COMPLETION OF ROUGH GRADING.
3. EROSION CONTROL MEASURES SHALL BE INSPECTED AND MAINTAINED BY THE CONTRACTOR NOT LESS THAN WEEKLY OR WITHIN 24 HOURS AFTER A RAINFALL EVENT OF 0.5 INCHES OR MORE. MAINTENANCE SHALL INCLUDE BUT NOT BE LIMITED TO SEDIMENT REMOVAL AND SILT FENCE REPAIR AND/OR REPLACEMENT. FIELD ADJUSTMENTS MAY BE MADE AS NECESSARY TO ENSURE OPTIMAL PERFORMANCE.
4. CONTRACTOR SHALL CLEAR ALL SURROUNDING PARKING LOTS AND STREETS OF ANY TRACKED DEBRIS BY SWEEPING OR SCRAPING THE EXISTING PAVEMENT BY THE END OF EACH WORKDAY AND THE CONTRACTOR SHALL CLEAN UP SOIL WASHED OFF THE CONSTRUCTION SITE AFTER A STORM BY THE END OF THE NEXT WORKDAY.
5. DURING ALL SOIL DISTURBING ACTIVITIES, THE CONTRACTOR WILL TAKE APPROPRIATE STEPS USING ACCEPTED CONSTRUCTION METHODS TO MINIMIZE THE TIME OF EXPOSURE OF UNPROTECTED SOIL AND OTHER CONSTRUCTION MATERIALS TO RAINFALL.
6. CONTRACTOR SHALL KEEP A WRITTEN LOG OF WHEN CONSTRUCTION ACTIVITIES BEGIN, EROSION AND SEDIMENT CONTROLS ARE INSTALLED, INSPECTED AND REPAIRED.
7. EROSION AND SEDIMENT CONTROL MEASURES SHALL NOT BE REMOVED UNTIL GRASS COVER HAS BEEN ESTABLISHED OR AS DIRECTED BY ENGINEER.
8. ALL AREAS SHALL BE GRADED TO FINISHED GRADE PRIOR TO SEEDING AND MULCHING. ALL AREAS NOT PART OF THE HARDSCAPE OR OTHER NOTED LANDSCAPING SHALL BE PERMANENTLY SEEDED, FERTILIZED AND MULCHED.
9. ALL WATTLES SHALL BE STRAW WATTLE WS-12 AS MANUFACTURED BY NORTH AMERICAN GREEN, OR APPROVED EQUAL. THE WATTLES SHALL BE INSTALLED PER MANUFACTURER'S RECOMMENDATIONS. THE CONTRACTOR MAY USE WATTLES AND SILT FENCE INTERCHANGEABLY IN AREAS IDENTIFIED ON THE DRAWINGS.
10. THE CONTRACTOR HAS THE OPTION TO MODIFY THE LOCATION OF THE CONSTRUCTION ENTRANCE TO FIT THE PREFERRED WORK PATTERN.

WASTE DISPOSAL:

1. WASTE MATERIALS: ANY WASTE AND OTHER UNUSABLE MATERIALS WILL BE REMOVED FROM THE SITE ON A REGULAR BASIS AND PROPERLY DISPOSED OF IN AN APPROVED SITE.
2. CHEMICAL WASTE: ALL CHEMICAL WASTE MATERIALS WILL BE COLLECTED AND STORED IN A TIGHTLY SEALED METAL OR OTHER CHEMICAL RESISTANT CONTAINER. THE CONTAINER WILL MEET ALL LOCAL AND ANY STATE SOLID WASTE MANAGEMENT REGULATIONS. THE WASTE MATERIALS AND ALL DISPOSABLE MATERIALS WILL BE TRANSPORTED TO A COMMERCIAL CHEMICAL DISPOSAL FACILITY CAPABLE OF EITHER RECYCLING OR PROPERLY DISPOSING OF THE POLLUTANTS IN ACCORDANCE WITH ALL APPLICABLE FEDERAL, STATE AND LOCAL REGULATIONS. THE STATE WASTE MANAGEMENT SECTION CONTACT NUMBER IS (785) 296-1600.
3. HAZARDOUS WASTE: ALL HAZARDOUS WASTE MATERIALS, SUCH AS OIL FILTERS, PETROLEUM PRODUCTS, EQUIPMENT MAINTENANCE FLUIDS AND PAINTS, SHALL NOT BE STORED ON SITE AND WILL BE DISPOSED OF IN THE MANNER SPECIFIED BY LOCAL, STATE AND/OR FEDERAL REGULATIONS. IF THERE ARE QUESTIONS REGARDING THE PROPER HANDLING OF HAZARDOUS WASTES THE CONTRACTOR SHALL IMMEDIATELY CONTACT THE KANSAS DEPARTMENT OF HEALTH AND ENVIRONMENT HAZARDOUS WASTE SECTION AT (785) 296-1600.
4. SANITARY WASTE: PORTABLE TOILET FACILITIES WILL BE PROVIDED ON THE PROJECT SITE AND SERVICED BY THE PROVIDER ON A REGULAR BASIS.

MATERIAL MANAGEMENT PRACTICES:

GOOD HOUSEKEEPING: THE FOLLOWING GOOD HOUSEKEEPING PRACTICES WILL BE FOLLOWED ON-SITE DURING CONSTRUCTION.

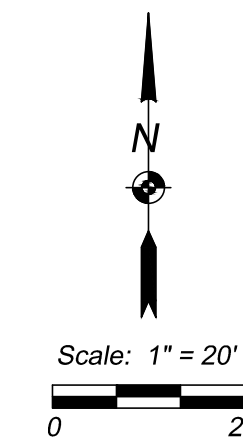
1. ALL MATERIALS STORED ON-SITE WILL BE STORED IN A NEAT, ORDERLY MANNER IN ORIGINAL CONTAINERS IF APPROPRIATE.
2. PRODUCTS WILL BE KEPT IN THEIR ORIGINAL CONTAINERS WITH THE ORIGINAL MANUFACTURER'S LABELS.
3. MANUFACTURERS' RECOMMENDATIONS FOR PROPER USE AND DISPOSAL WILL BE FOLLOWED.

SPILL PREVENTION:

1. PETROLEUM PRODUCTS: ALL ON-SITE VEHICLES WILL BE MONITORED FOR LEAKS AND RECEIVE REGULAR PREVENTATIVE MAINTENANCE TO REDUCE THE CHANCE OF LEAKAGE. PETROLEUM PRODUCTS WILL BE STORED IN TIGHTLY SEALED CONTAINERS WHICH ARE CLEARLY LABELED.
2. FERTILIZERS: FERTILIZERS USED WILL BE APPLIED ONLY IN THE MINIMUM AMOUNTS RECOMMENDED BY THE MANUFACTURER. ONCE APPLIED, FERTILIZER WILL BE WORKED INTO THE SOIL TO LIMIT EXPOSURE TO STORM WATER. FERTILIZER SHALL NOT BE STORED ON-SITE.
3. CONCRETE TRUCKS: CONCRETE TRUCKS ARE LIMITED TO A DESIGNATED AREA TO WASH OUT OR DISCHARGE SURPLUS CONCRETE OR DRUM WASH WATER ON THE SITE. PROPER SIGNAGE SHALL BE INSTALLED AND MAINTAINED ON SITE DEFINING DIRECTIONS TO AND LOCATIONS OF THE SPECIFIED WASH OUT AREA. IF A WASH OUT AREA CANNOT BE DESIGNATED OR MAINTAINED ON SITE, CONCRETE WASH OUT AND DISPOSAL MAY BE PROHIBITED AT THE OWNERS DISCRETION.

LEGEND:

- 1335 — PROPOSED CONTOURS
- - - 1335 - - - EXISTING CONTOURS
- - - 1334 - - - EXISTING CONTOURS
- SF - SILT FENCE
- () — CURB INLET PROTECTION
- - - DISTURBED AREA = 0.81 ACRES
- () — CONSTRUCTION ENTRANCE



PUBLISHED	12/11/20
REVISED	
EROSION CONTROL PLAN	
3	

X:\11 SBB Drawings\0-2020\20-081 Wall Dev 133653 Maple-Wichita.dwg Design\Site Construction Plans\Public Sanitary Set\20-081 Erosion Plan.dwg 1/8/2021 2:50:20 PM