

SANITARY SEWER EXTENSION to serve CLEAR CREEK FOURTH ADDITION CITY OF WICHITA, KANSAS

Gary Janzen, P.E. City Engineer
Project Number 468-2020-012797
O.C.A. NO. 810110

As-built
Release Date (for connection purposes only): 7/14/2021
Completion Date:
pdf: apr 7/15/2021

Contractor - Nowak
Foreman - Tim Schmidt
Inspector - Roger Skilling
Engineer - Kevin Yale

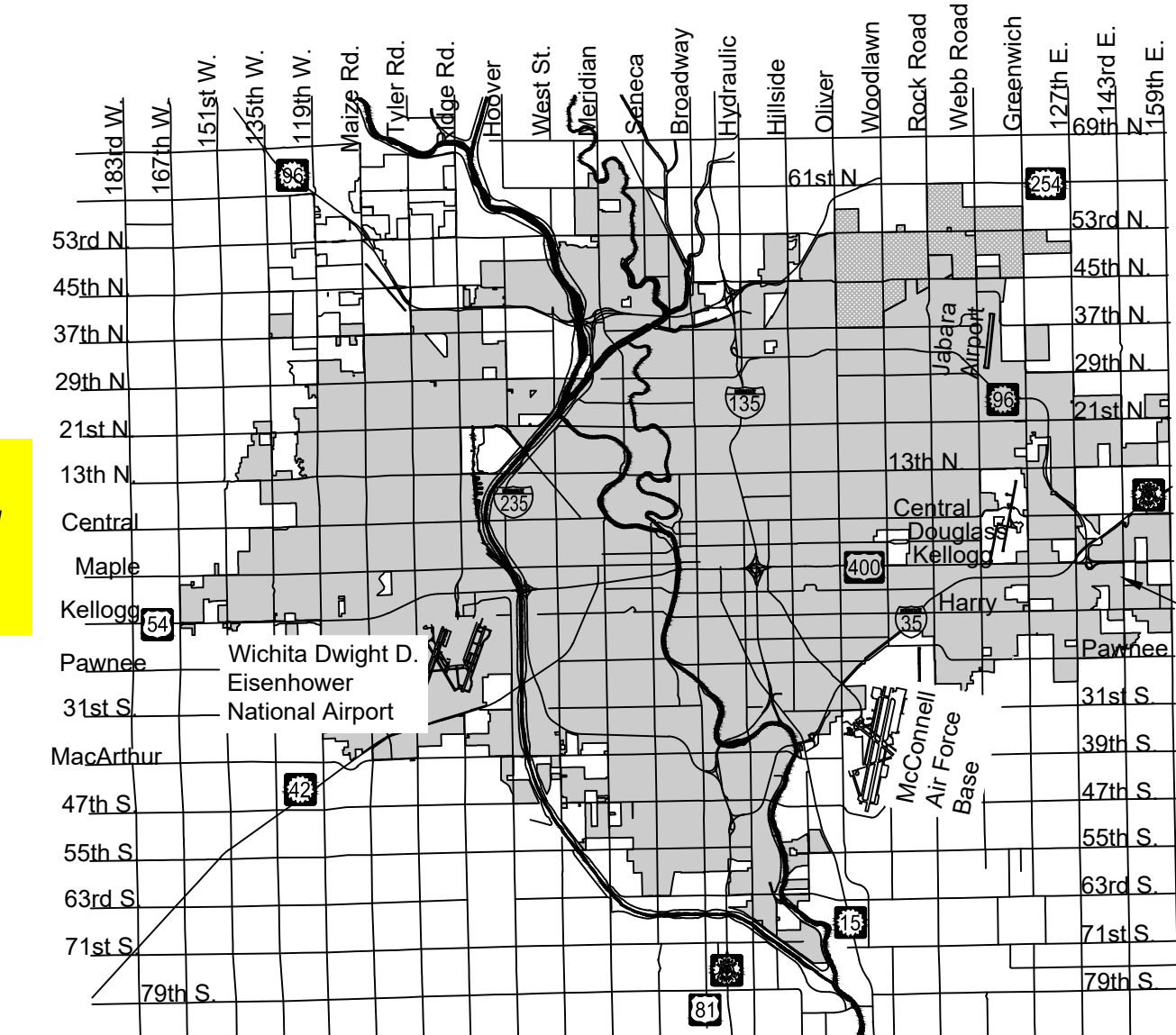
Project
accepted
4/7/2021

Project built to revised
plans, additional changes
noted

6346A

4MC-MH

Clear Creek Addition



PROJECT
LOCATION

GENERAL NOTES:

1. The Contractor shall comply with all applicable safety regulations. All construction shall be completed following current City Standard Specifications and Special Provisions.

2. Contractor will be required to provide notice to utility companies a minimum of seventy-two (72) hours prior to any excavation, as follows:

Kansas One-Call 687-2470

The Contractor must notify the following in case of an emergency:

AT&T 1-800-246-8464
City of Wichita Water & Sewer Dept. 1-316-219-8921
City of Wichita Stormwater 1-316-268-4090
City of Wichita Traffic 1-316-268-4034
Cox Communications 1-888-249-3530
Evergny 1-800-544-4857
Kansas Gas Service 1-888-482-4950

3. Utility service lines, poles, etc. are to be adjusted as necessary by others prior to construction unless the plans specifically call for their adjustment by the Contractor or unless the plans specifically identify a utility to be adjusted by its owner during construction. Existing utilities and their location, as shown on the plans, represent the best information obtainable for design. The Contractor will be required to work around existing utilities within the right-of-way which do not conflict with proposed construction.

4. Rubble from the removal of miscellaneous structures and excess excavation which is to be wasted shall be disposed of on sites to be provided by the Contractor. These sites shall be approved by the Engineer as to suitability, appearance and site location. Locations, in the opinion of the Engineer, that will leave an unsightly appearance will not be approved. All disposal sites must be approved by the Kansas Department of Health and Environment. Material either stockpiled or disposed of in a flood plain will require a Kansas State Board of Agriculture permit. Any material dumped in waters of the United States or wetlands is subject to U.S. Corps. of Engineers permitting regulations. Any material buried or stockpiled beyond approved construction limits will require additional archaeological investigations unless buried in a previously approved borrow location.

5. Trees and shrubs in public right-of-way which are in direct conflict with proposed new construction shall be removed by the Contractor with the Engineer's approval. Trees and shrubs which are not in direct conflict with proposed new construction shall be saved and protected from damage.

6. The Contractor shall give all property owners and/or tenants of developed property abutting the construction of this project a minimum of ten (10) days notice prior to start of construction.

7. The Contractor shall be responsible for preserving property irons. The Contractor will be required to re-establish any property irons which are damaged or destroyed by his construction operations. Such irons shall be re-established by a licensed land surveyor in accordance with state laws.

8. If traffic will be impacted by construction, a traffic control plan must be submitted and approved by the City Traffic Engineer, at traffic@wichita.gov before construction can begin. The Contractor shall be responsible for all traffic control measures to facilitate construction. All construction zone markings and signage shall conform to the latest version of the Manual on Uniform Traffic Control Devices (MUTCD) as published by the US Dept. of Transportation, Federal Highway Administration. All costs associated with construction markings and signage shall be the Contractors responsibility.

10. All elevations shown are NAVD 88.

11. All areas disturbed during construction that will not be under proposed pavement shall be restored to match existing conditions.

12. The Contractor shall protect from damage and support existing utilities through constructions as approved by the utility owner and the Engineer at the contractors expense.

13. Contractor shall limit the extent of trench openings overnight and weekends to less than 50 feet.

14. All stubs and plugged pipes shall be located with green plastic tape in the same manner as risers.

15. Connecting to Existing Manholes:

Prior to laying sewer lines using existing stubs in existing manholes, the Contractor shall expose and verify the elevation, grade and alignment of existing stubs and notify the Engineer of any deviation from the plans. Where connection to an existing manhole that does not have an existing stub or the stub is unusable due to elevation grade or alignment, the Contractor shall bore cut into existing manhole wall to make connection using approved water stop gasket, and reshape the existing manhole invert to provide smooth flow. The cost to connecting to existing manholes is incidental to the project.

16. Contractor shall provide positive drainage away from all manhole covers.

17. The Contractor shall prevent any construction debris from entering the existing sanitary sewer during construction.

18. The Contractor shall be responsible for maintaining continuous flow of sewage through construction. Contractors proposed method for maintaining sewage flow shall be submitted and approved by the Sewer Maintenance Division (316-268-4073) prior to starting and by-passing of sewage flows.

19. Any over excavation from manhole and/or pipe removal shall be backfilled and compacted in accordance with the Standard Specifications.

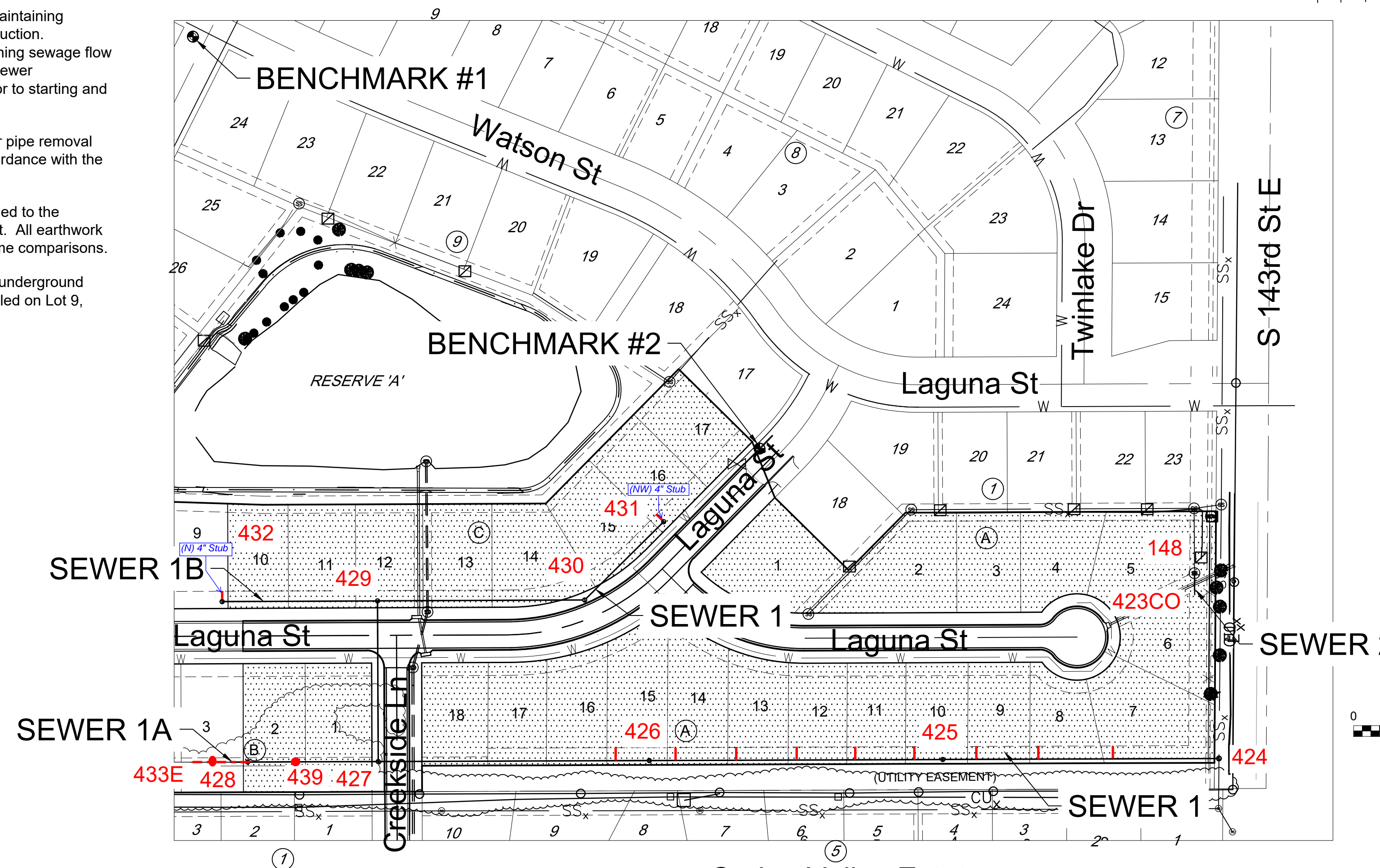
20. No shrink or swell factors have been applied to the earthwork quantities shown on this project. All earthwork quantities are based on raw surface volume comparisons.

21. Excess dirt generated from installation of underground utilities is to remain on site and be stockpiled on Lot 9, Block C.

Benchmarks

BENCHMARK #1:
CHISELED SQUARE ON THE TOP OF CURB AT THE
SOUTH CURB RETURN AT THE SOUTHWEST CORNER
OF E MORRIS ST AND WATSON ST
ELEVATION = 1330.32 (NAVD88, G18)

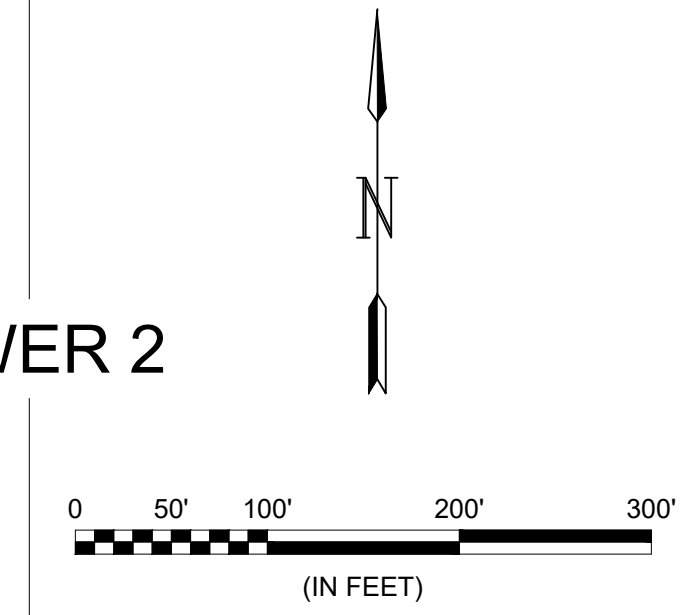
BENCHMARK #2:
CHISELED SQUARE ON THE TOP OF CURB AT THE LOT
LINE COMMON TO LOT 17, BLOCK 1, CLEAR CREEK
ADDITION AND LOT 17, BLOCK A, CLEAR CREEK 4TH
ADDITION
ELEVATION = 1324.42 (NAVD88, G18)



Spring Valley Estates
Second Addition

IMPROVEMENT DISTRICT

Vicinity Map



Sheet	Title
1	TITLESHEET
2	PRE-CAST MANHOLE
3	MANHOLE FRAME & COVER
4	VERTICAL RISER
5	CLEANOUT RISER
6	SANITARY SEWER 1
7	SANITARY SEWERS 1 & 1A
8	SANITARY SEWER 1B & 2
9	COORDINATE MAP
10	EROSION CONTROL PLAN
11	SW-501
12	SW-502
13	SW-503
14	SW-504
15	SW-505
16	FINAL PLAT

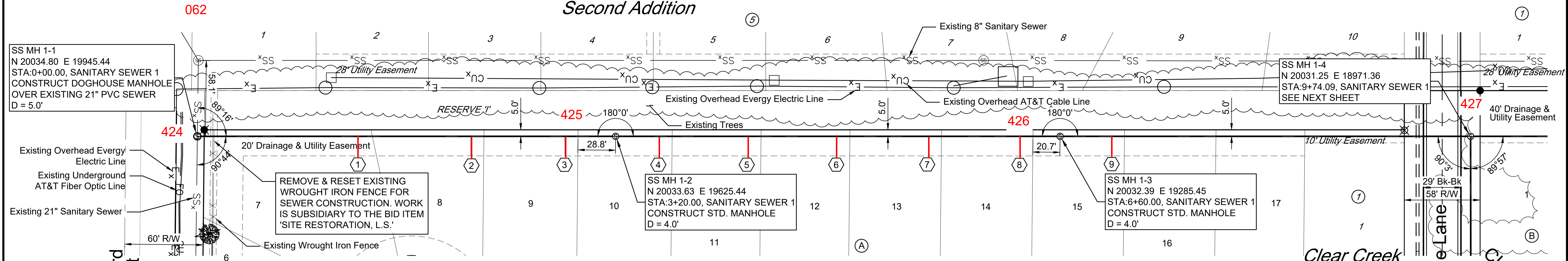


NOV 2020

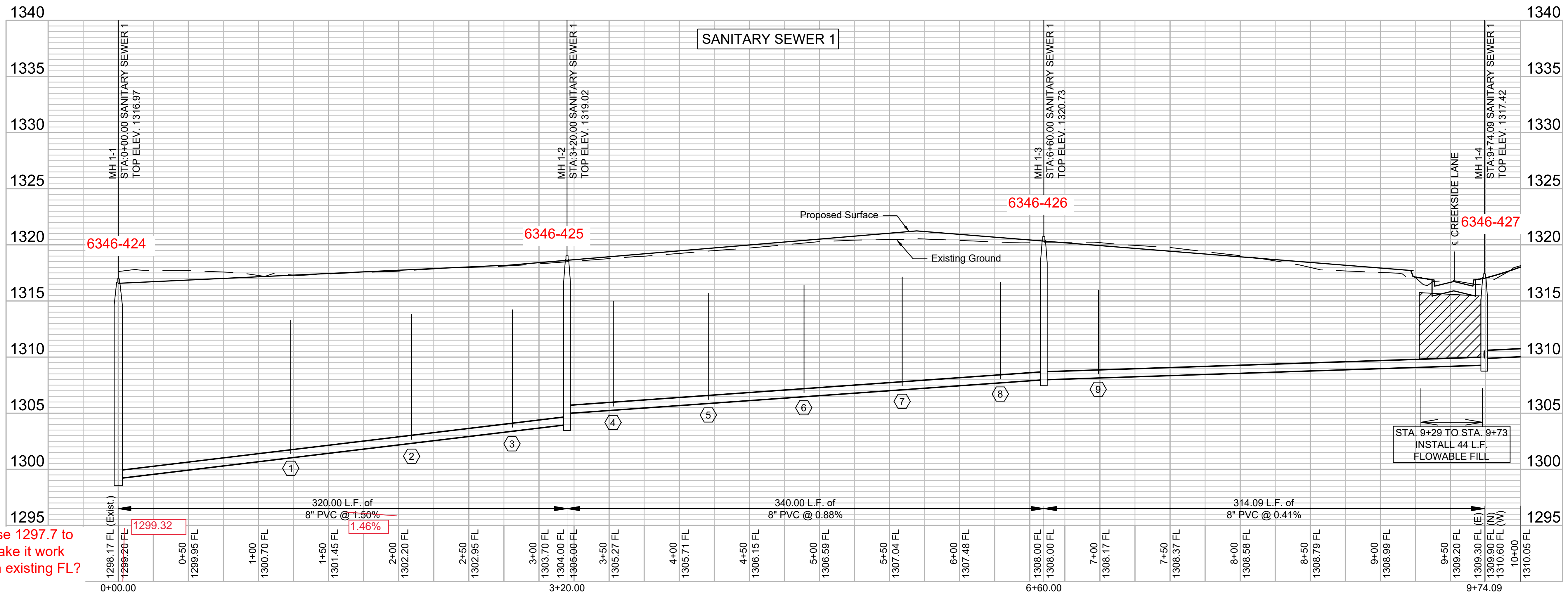
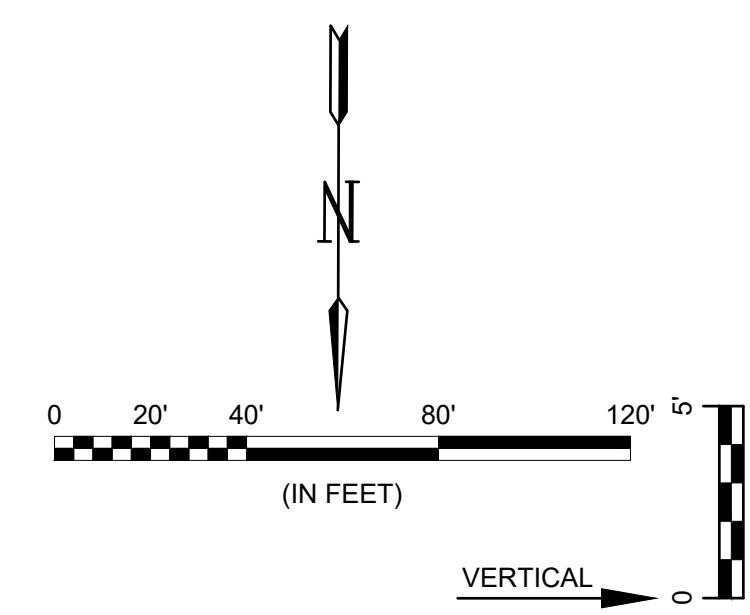
PLANS PREPARED BY

GARVER
8535 E. 21st Street N.
Suite 130
Wichita, KS 67206
(316) 264-8008
www.GarverUSA.com
Project No. 20T41005

Spring Valley Estates Second Addition



NUMBER	TYPE	SERVING			STATION/DIRECTION	FOR INFORMATION ONLY		DISTANCE FROM MAIN TO RISER (LT./RT.)	DISTANCE FROM	
		LOT NO.	BLOCK NO.	LINE NO.		APPROX. LENGTH 4" PIPE			UPSTREAM MH	DOWNSTREAM MH
						VERTICAL	HORIZONTAL			
1	8"x4" Tee	7	A	1	1+23 Right	12.0'	15.0'	15' RT.	199'	121'
2	8"x4" Tee	8	A	1	2+09 Right	11.5'	15.0'	15' RT.	111'	209'
3	8"x4" Tee	9	A	1	2+81 Right	10.5'	15.0'	15' RT.	41'	279'
4	8"x4" Tee	10	A	1	3+53 Right	9.5'	15.0'	15' RT.	306'	34'
5	8"x4" Tee	11	A	1	4+21 Right	9.5'	15.0'	15' RT.	238.5'	101.5'
6	8"x4" Tee	12	A	1	4+89 Right	10.0'	15.0'	15' RT.	169'	171'
7	8"x4" Tee	13	A	1	5+59 Right	10.0'	15.0'	15' RT.	100'	240'
8	8"x4" Tee	14	A	1	6+29 Right	9.0'	15.0'	15' RT.	31.5'	308.5'
9	8"x4" Tee	15	A	1	6+99 Right	7.5'	15.0'	15' RT.	277'	37'



Use 1297.7 to make it work on existing FL?



© 2020 GARVER, LLC
THIS DOCUMENT, ALONG WITH THE IDEAS AND DESIGNS CONVEYED HEREIN, SHALL BE CONSIDERED INSTRUMENTS OF PROFESSIONAL SERVICE AND ARE PROPERTY OF GARVER, LLC. ANY USE, REPRODUCTION, OR DISTRIBUTION OF THIS DOCUMENT, ALONG WITH THE IDEAS AND DESIGNS CONTAINED HEREIN, IS PROHIBITED UNLESS AUTHORIZED IN WRITING BY GARVER, LLC OR EXPLICITLY ALLOWED IN THE GOVERNING PROFESSIONAL SERVICES AGREEMENT FOR THIS WORK.



REV.	DATE	DESCRIPTION	BY



SANITARY SEWER 1

JOB NO.: 20T41005
DATE: NOV 2020
DESIGNED BY: EJG
DRAWN BY: CDJ

BAR IS ONE INCH ON ORIGINAL DRAWING
IF NOT ONE INCH ON THIS SHEET, ADJUST SCALES ACCORDINGLY.

DRAWING NUMBER

SHEET NUMBER **6** OF **16**

File: L:\2020\20T41005 - Clear Creek Ph 6\Drawings\C3D\SANITARY\SANITARY SEWER 1 (2).dwg Last Save: 11/12/2020 4:46 PM Last saved by: CDJurey
Last plotted by: Jurey, Caleb D. Plot Style: ---- Plot Scale: 1:2.5849 Plot Date: 11/16/2020 9:50 AM Plotter used: None



© 2020 GARVER, LLC
 THIS DOCUMENT, ALONG WITH THE IDEAS AND DESIGNS CONVEYED HEREIN, SHALL BE CONSIDERED INSTRUMENTS OF PROFESSIONAL SERVICE AND ARE PROPERTY OF GARVER, LLC. ANY USE, REPRODUCTION, OR DISTRIBUTION OF THIS DOCUMENT, ALONG WITH THE IDEAS AND DESIGN CONTAINED HEREIN, IS PROHIBITED UNLESS AUTHORIZED IN WRITING BY GARVER, LLC OR EXPLICITLY ALLOWED IN THE GOVERNING PROFESSIONAL SERVICES AGREEMENT FOR THIS WORK.



BY	DATE	DESCRIPTION



CITY OF WICHITA
 WICHITA, KANSAS
 CLEAR CREEK ADDITION
 SANITARY SEWER

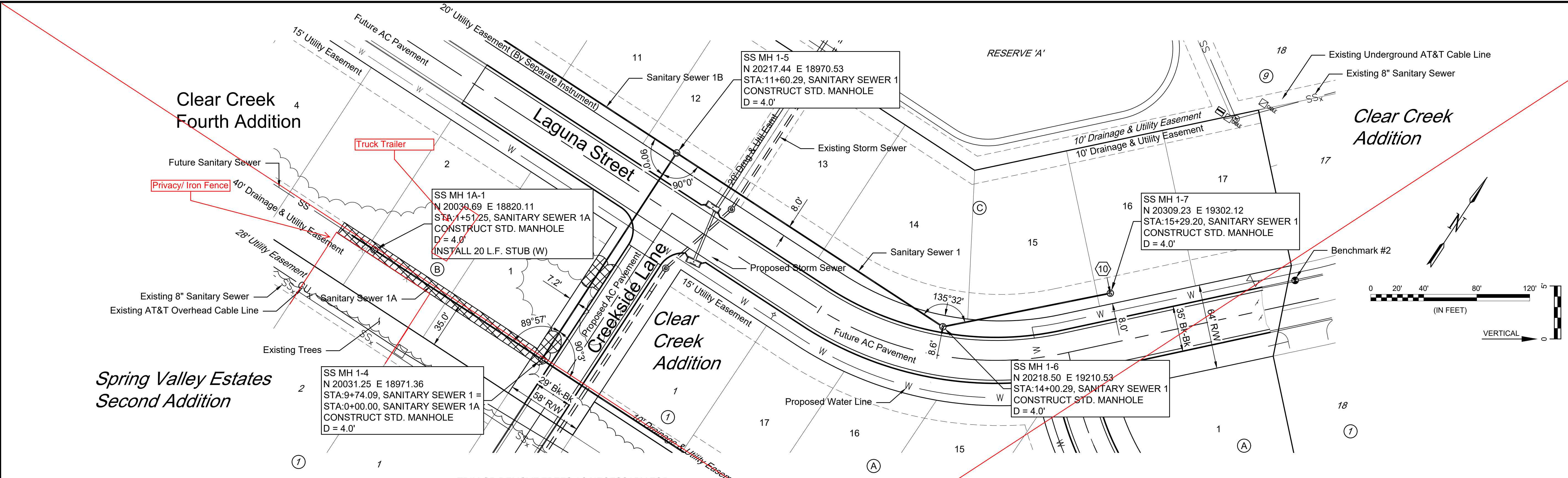
SANITARY SEWERS 1 & 1A

JOB NO.: 20T41005
 DATE: NOV 2020
 DESIGNED BY: EJG
 DRAWN BY: CDJ

BAR IS ONE INCH ON ORIGINAL DRAWING
 0" = 1" (VERTICAL)
 1" = 10' (HORIZONTAL)
 IF NOT ONE INCH ON THIS SHEET, ADJUST SCALES ACCORDINGLY.

DRAWING NUMBER

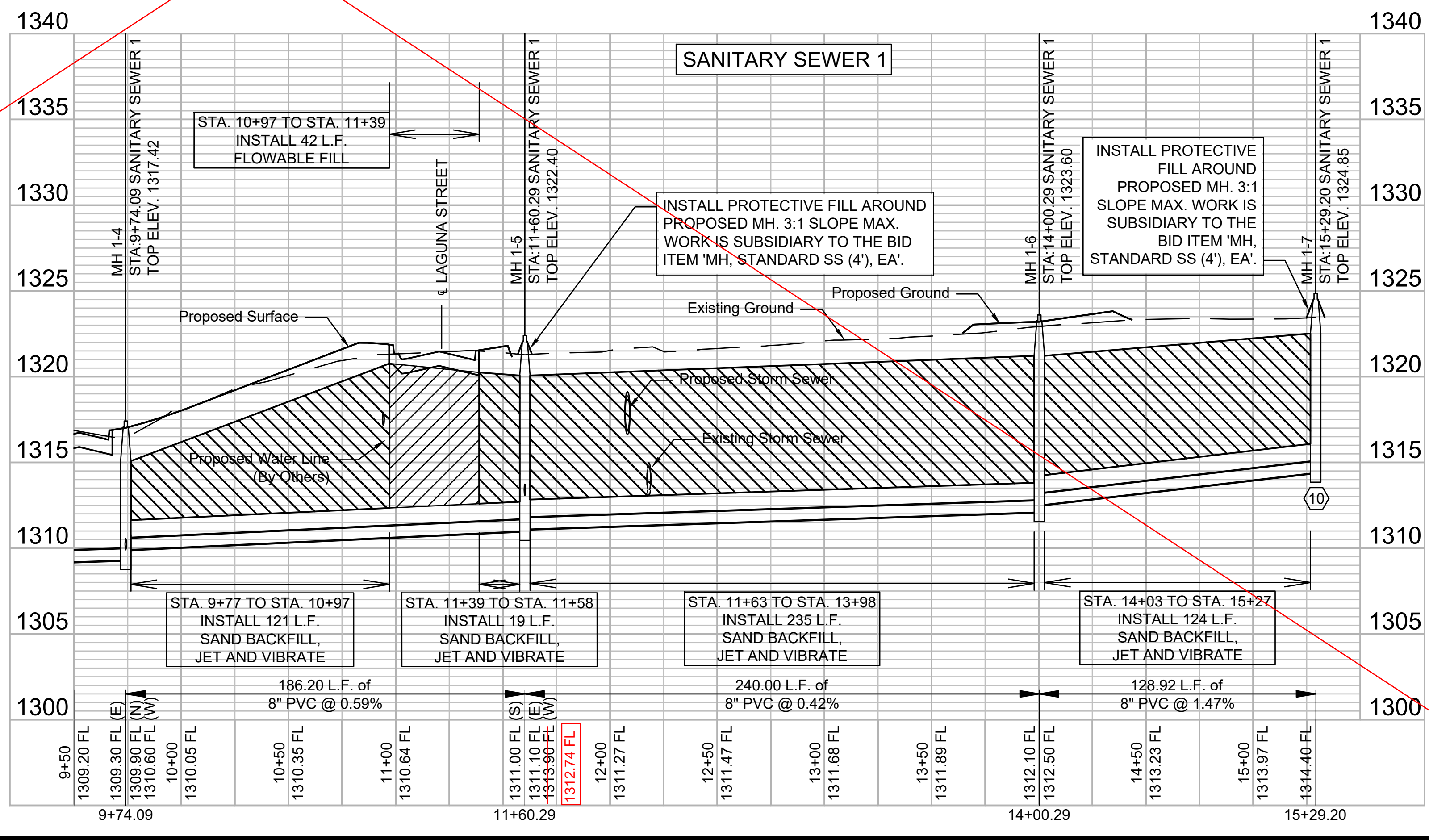
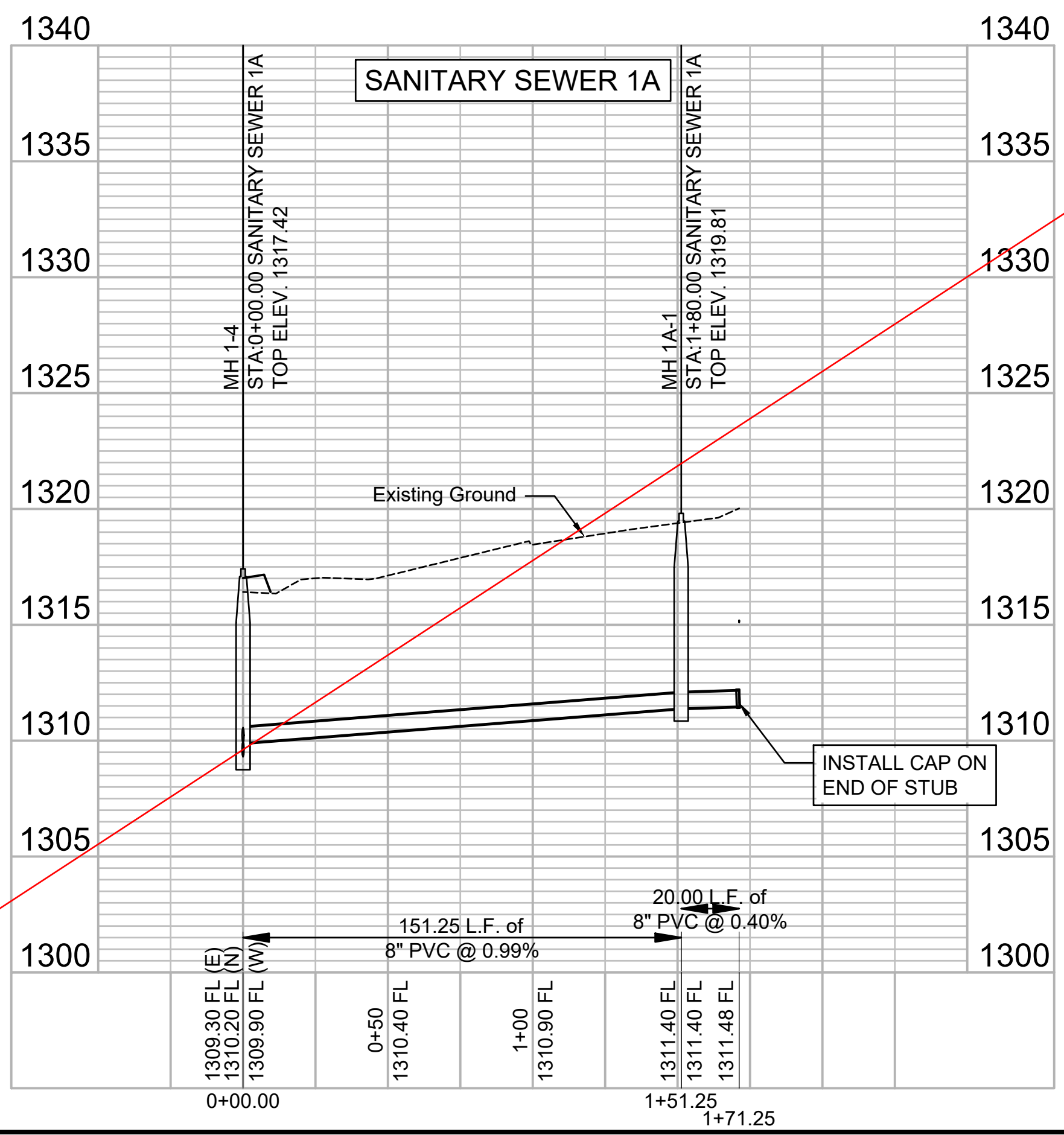
SHEET NUMBER **7** OF **16**



TRIM OR REMOVE TREES AS NECESSARY FOR SEWER CONSTRUCTION. WORK IS INCIDENTAL TO THE BID ITEM 'SITE CLEARING, L.S.'

NUMBER	TYPE	SERVING			STATION/DIRECTION	FOR INFORMATION ONLY	
		LOT NO.	BLOCK NO.	LINE NO.		APPROX. LENGTH 4" PIPE	VERTICAL
10	4" MH Stub	16	C	1	15+29 Left (MH)	4.0'	9.5'

SEE REVISED SHEET



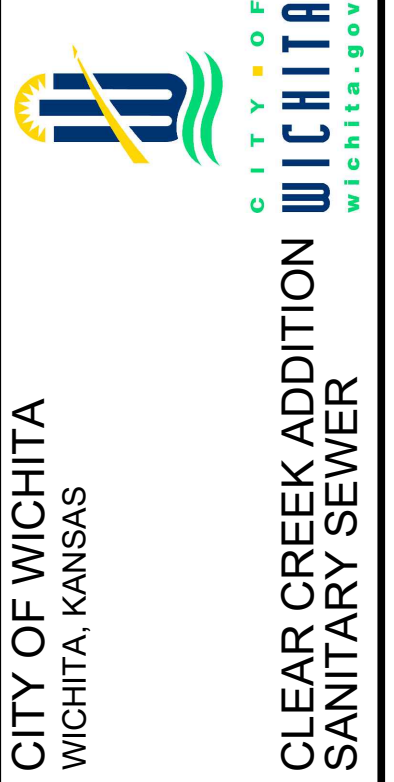
File: L:\2020\20T41005 - Clear Creek Ph. 6\Drawings\C3D\SANITARY SEWER 1 (3).dwg Last Save: 11/16/2020 8:51 AM Last saved by: CDJ
 Last plotted by: Jurey, Caleb D. Plot Style: --- Plot Scale: 1:2,584.9 Plot Date: 11/16/2020 9:50 AM Plotter Used: None



© 2020 GARVER, LLC
 THIS DOCUMENT, ALONG WITH THE IDEAS AND DESIGNS CONVEYED HEREIN, SHALL BE CONSIDERED INSTRUMENTS OF PROFESSIONAL SERVICE AND ARE PROPERTY OF GARVER, LLC. ANY USE, REPRODUCTION, OR DISTRIBUTION OF THIS DOCUMENT, ALONG WITH THE IDEAS AND DESIGN CONTAINED HEREIN, IS PROHIBITED UNLESS AUTHORIZED IN WRITING BY GARVER, LLC OR EXPLICITLY ALLOWED IN THE GOVERNING PROFESSIONAL SERVICES AGREEMENT FOR THIS WORK.

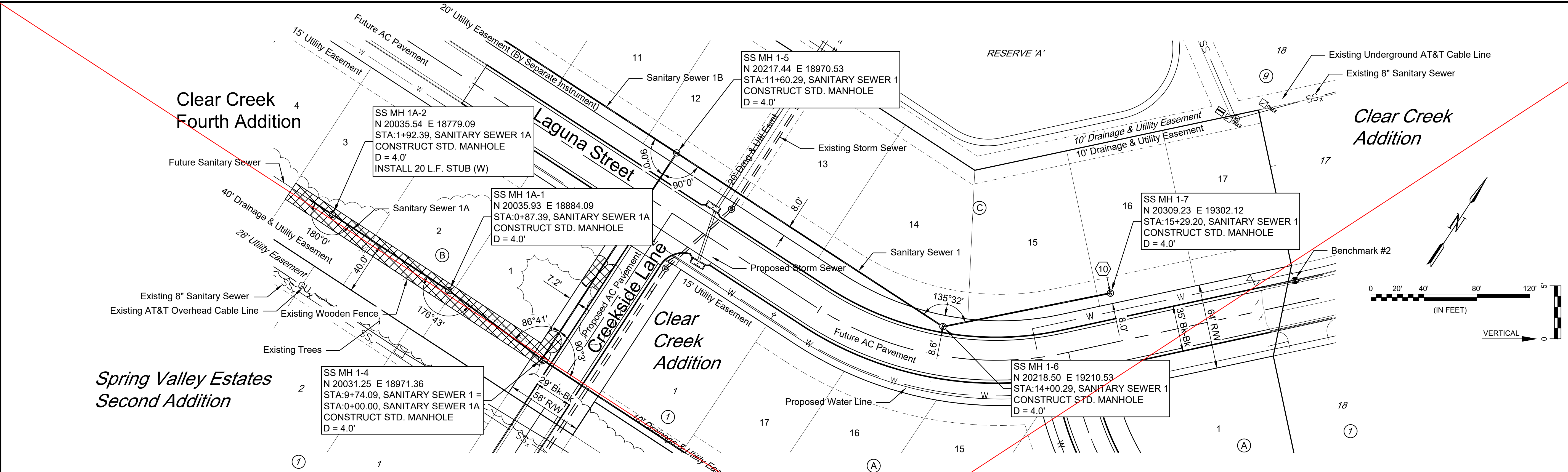


REV.	DATE	DESCRIPTION	BY
1	2/2/2021	ADJUST. SS 1A ALIGNMENT TO ACCOMMODATE EXIST. FENCE	CDJ



CITY OF WICHITA
 WICHITA, KANSAS
**CLEAR CREEK ADDITION
 SANITARY SEWER**

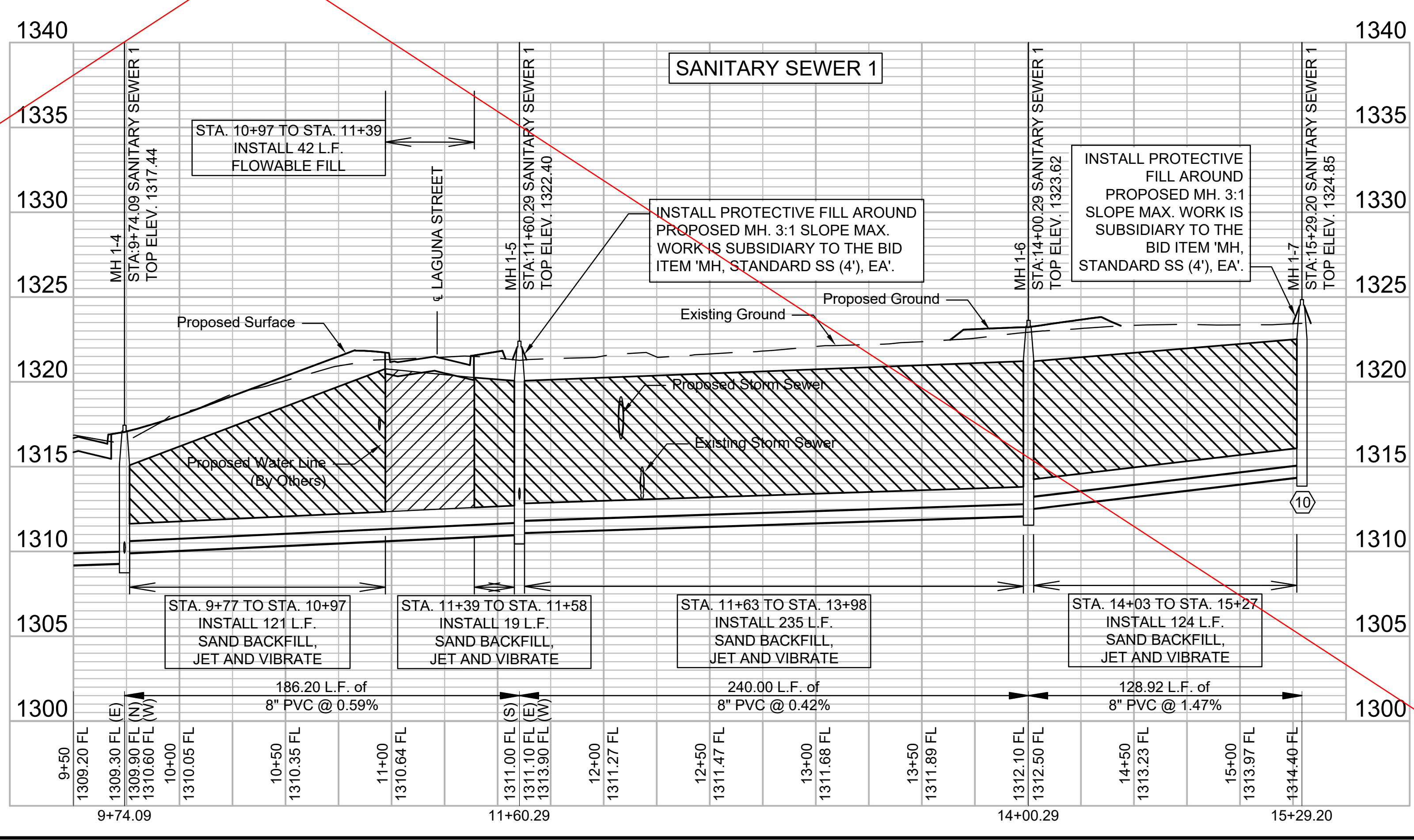
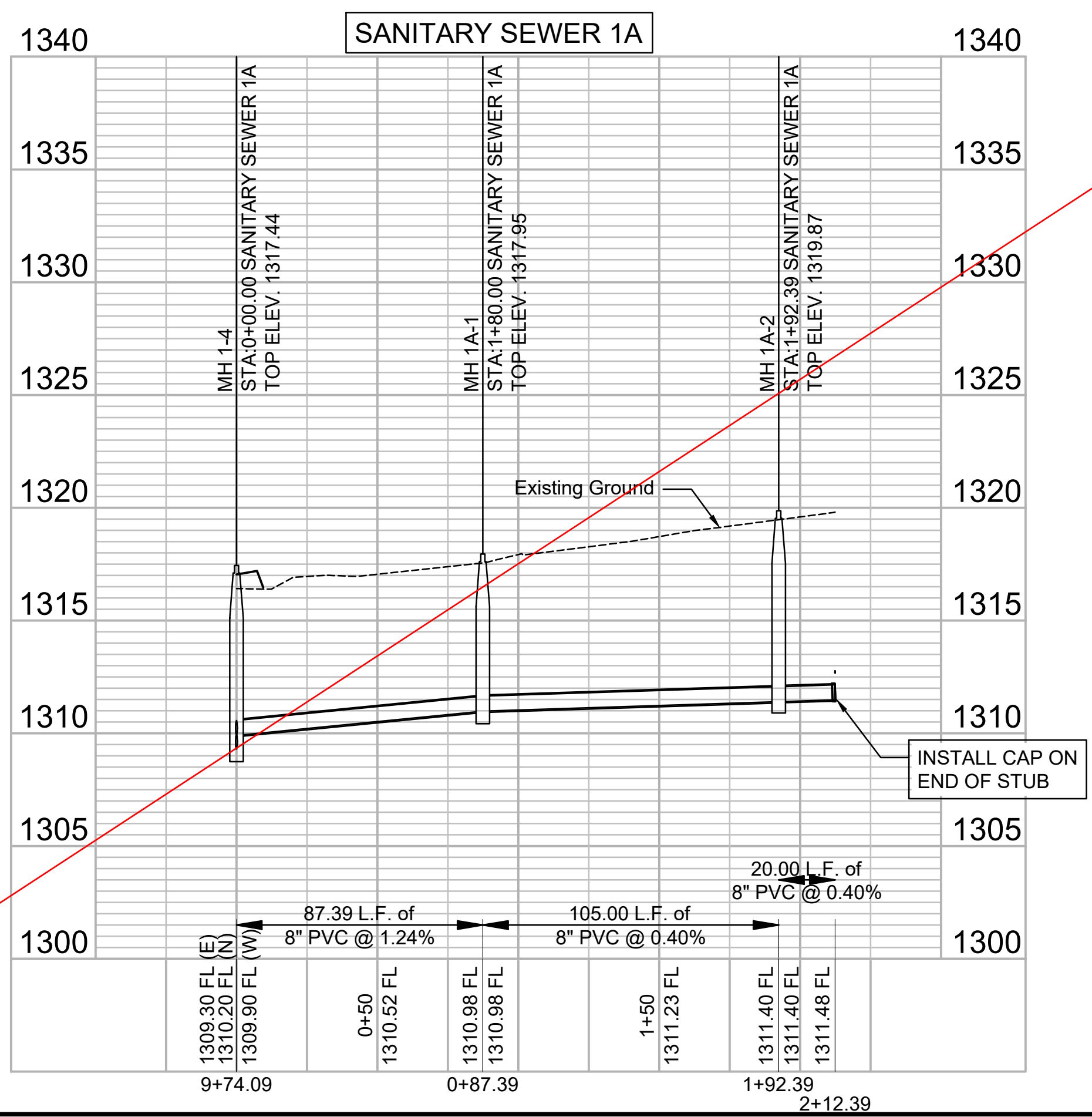
SANITARY SEWERS 1 & 1A
 JOB NO.: 20T41005
 DATE: NOV 2020
 DESIGNED BY: EJG
 DRAWN BY: CDJ
 BAR IS ONE INCH ON ORIGINAL DRAWING
 IF NOT ONE INCH ON THIS SHEET, ADJUST SCALES ACCORDINGLY.
 DRAWING NUMBER
 SHEET NUMBER **7** OF **16**



TRIM OR REMOVE TREES AS NECESSARY FOR SEWER CONSTRUCTION. WORK IS INCIDENTAL TO THE BID ITEM 'SITE CLEARING, L.S.'

SEE REVISED SHEET

NUMBER	TYPE	SERVING			STATION/DIRECTION	FOR INFORMATION ONLY	
		LOT NO.	BLOCK NO.	LINE NO.		APPROX. LENGTH 4" PIPE	VERTICAL
10	4" MH Stub	16	C	1	15+29 Left (MH)	4.0'	9.5'



File: L:\2020\20T41005 - Clear Creek Ph. 6\Drawings\C3D\SANITARY SEWER 1 (3).dwg Last Save: 2/2/2021 1:40 PM Last saved by: CDJurey
 Last plotted by: Jurey, Caleb D. Plot Style: --- Plot Scale: 1:2,584.9 Plot Date: 2/2/2021 1:41 PM Plotter used: None



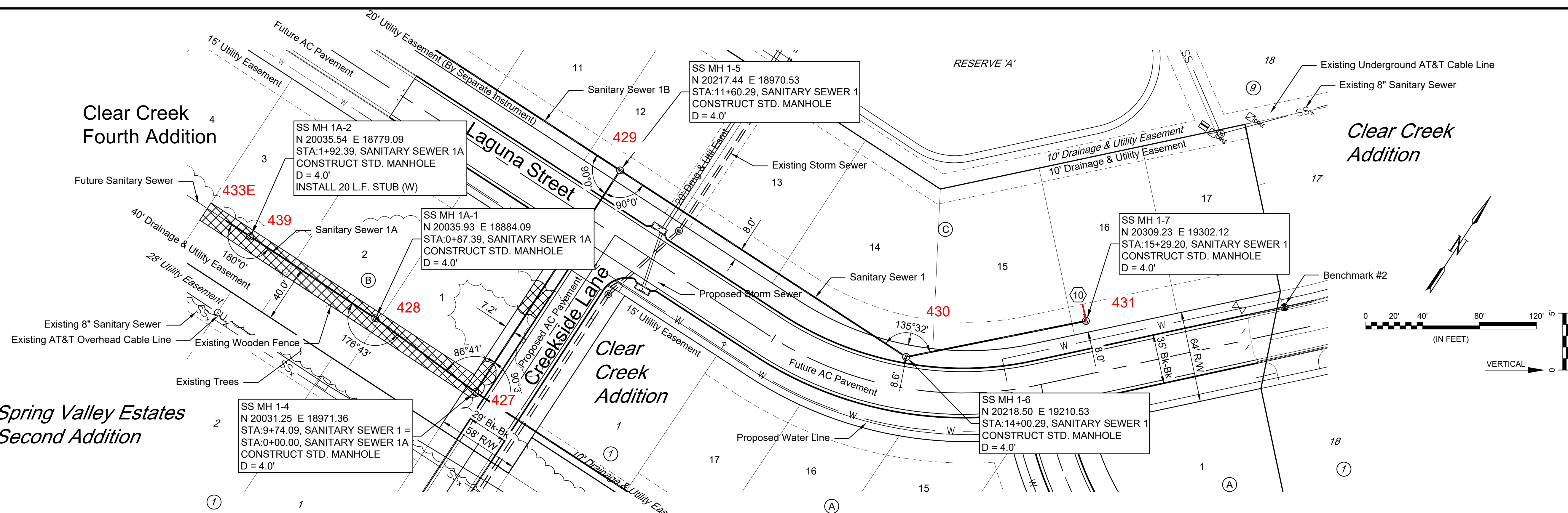
© 2020 GARVER, LLC
 THIS DOCUMENT, ALONG WITH THE IDEAS AND DESIGNS CONVEYED HEREIN, SHALL BE CONSIDERED INSTRUMENTS OF PROFESSIONAL SERVICE AND ARE PROPERTY OF GARVER, LLC. ANY USE, REPRODUCTION, OR DISTRIBUTION OF THIS DOCUMENT, ALONG WITH THE IDEAS AND DESIGN CONTAINED HEREIN, IS PROHIBITED UNLESS AUTHORIZED IN WRITING BY GARVER, LLC OR EXPLICITLY ALLOWED IN THE GOVERNING PROFESSIONAL SERVICES AGREEMENT FOR THIS WORK.



REV.	DATE	DESCRIPTION	BY
1	2/2/2021	ADJUST. SS 1A ALIGNMENT TO ACCOMMODATE EXIST. FENCE	CDJ

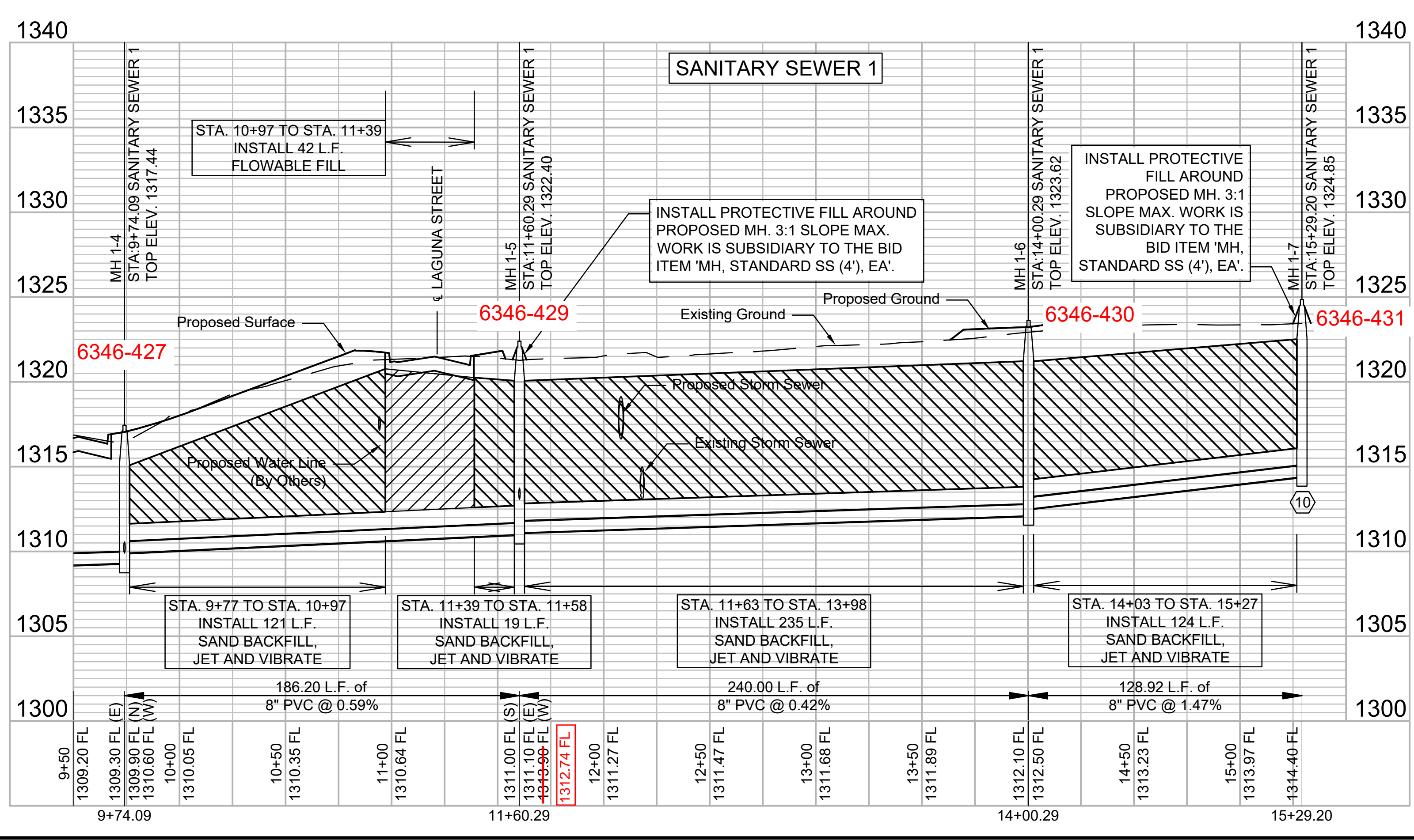
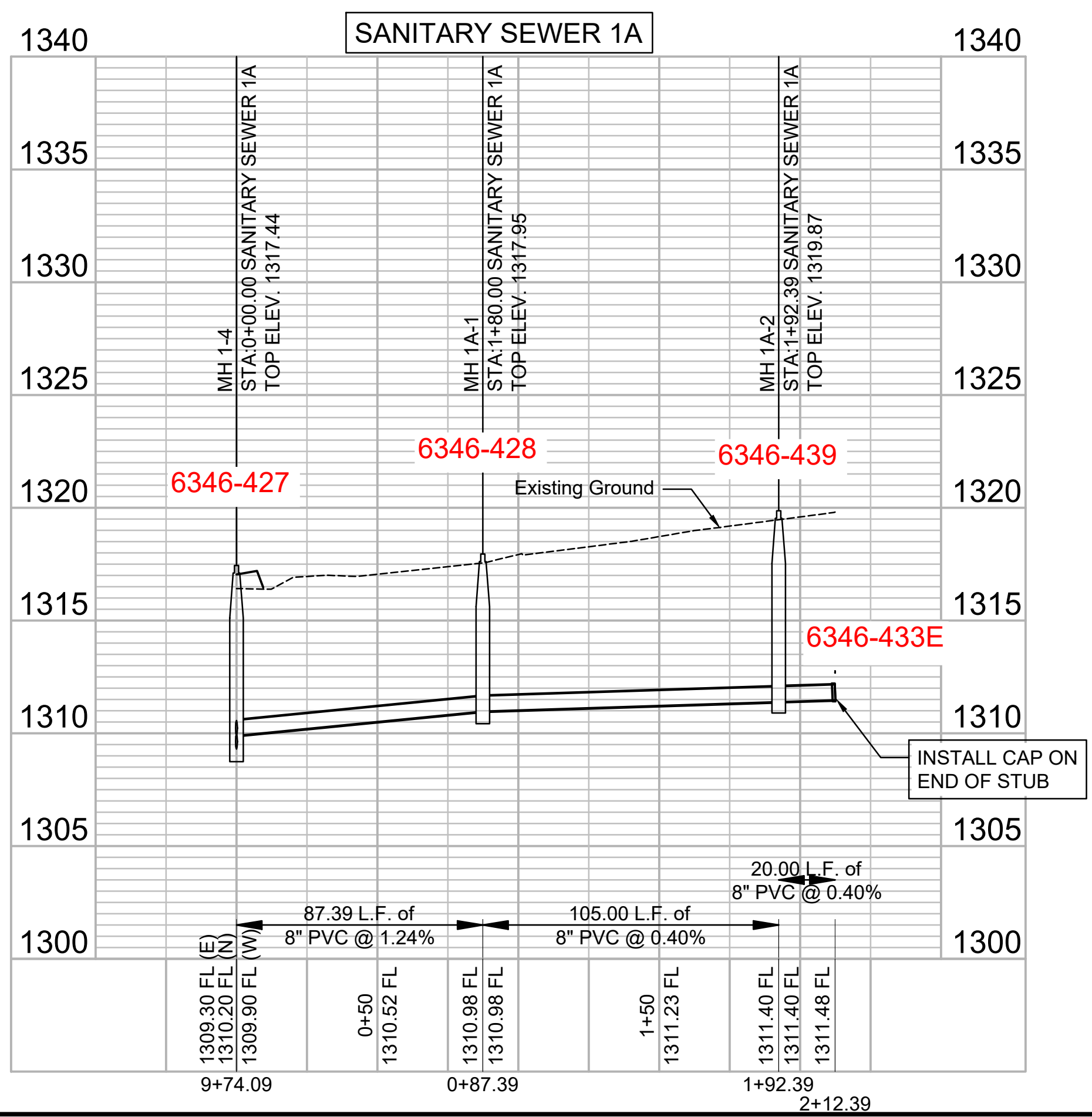


SANITARY SEWERS 1 & 1A
 JOB NO.: 20T41005
 DATE: NOV 2020
 DESIGNED BY: EJG
 DRAWN BY: CDJ
 BAR IS ONE INCH ON ORIGINAL DRAWING
 IF NOT ONE INCH ON THIS SHEET, ADJUST SCALES ACCORDINGLY.
 DRAWING NUMBER
 SHEET NUMBER **7** OF **16**



TRIM OR REMOVE TREES AS NECESSARY FOR SEWER CONSTRUCTION. WORK IS INCIDENTAL TO THE BID ITEM 'SITE CLEARING, L.S.'

NUMBER	TYPE	SERVING			STATION/DIRECTION	FOR INFORMATION ONLY	
		LOT NO.	BLOCK NO.	LINE NO.		APPROX. LENGTH 4" PIPE	VERTICAL
10	4" MH Stub	16	C	1	15+29 Left (MH)	4.0'	9.5'



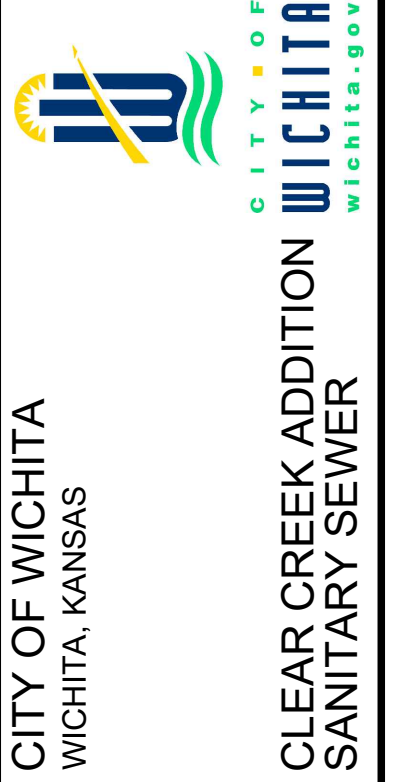
File: L:\2020\20T41005 - Clear Creek Ph. 6\Drawings\C3D\SANITARY SEWER 1 (3).dwg Last Save: 2/2/2021 1:40 PM Last saved by: CDJurey
 Last plotted by: Jurey, Caleb D. Plot Style: --- Plot Scale: 1:2.5849 Plot Date: 2/2/2021 1:41 PM Plotter used: None



© 2020 GARVER, LLC
 THIS DOCUMENT, ALONG WITH THE IDEAS AND DESIGNS CONVEYED HEREIN, SHALL BE CONSIDERED INSTRUMENTS OF PROFESSIONAL SERVICE AND ARE PROPERTY OF GARVER, LLC. ANY USE, REPRODUCTION, OR DISTRIBUTION OF THIS DOCUMENT, ALONG WITH THE IDEAS AND DESIGN CONTAINED HEREIN, IS PROHIBITED UNLESS AUTHORIZED IN WRITING BY GARVER, LLC OR EXPLICITLY ALLOWED IN THE GOVERNING PROFESSIONAL SERVICES AGREEMENT FOR THIS WORK.



REV.	DATE	DESCRIPTION

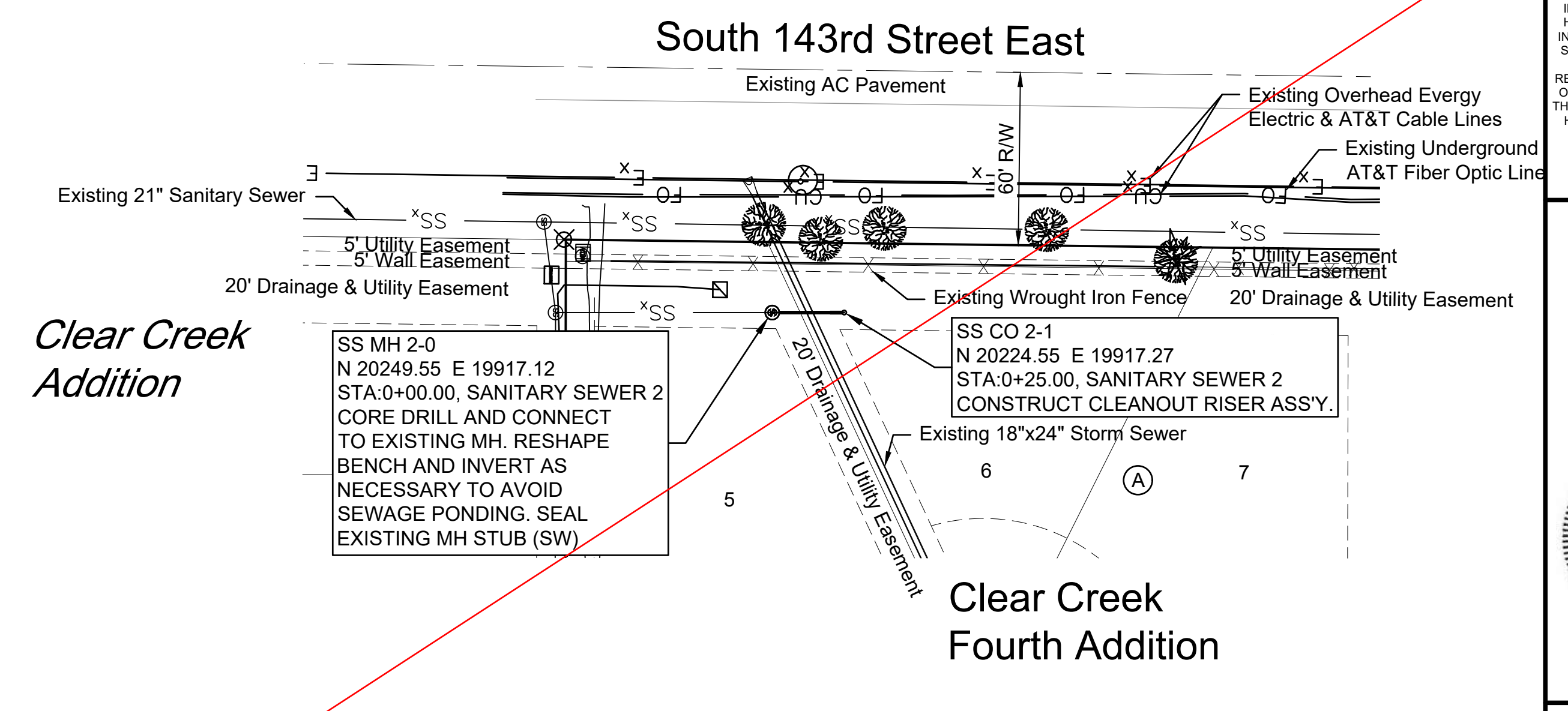
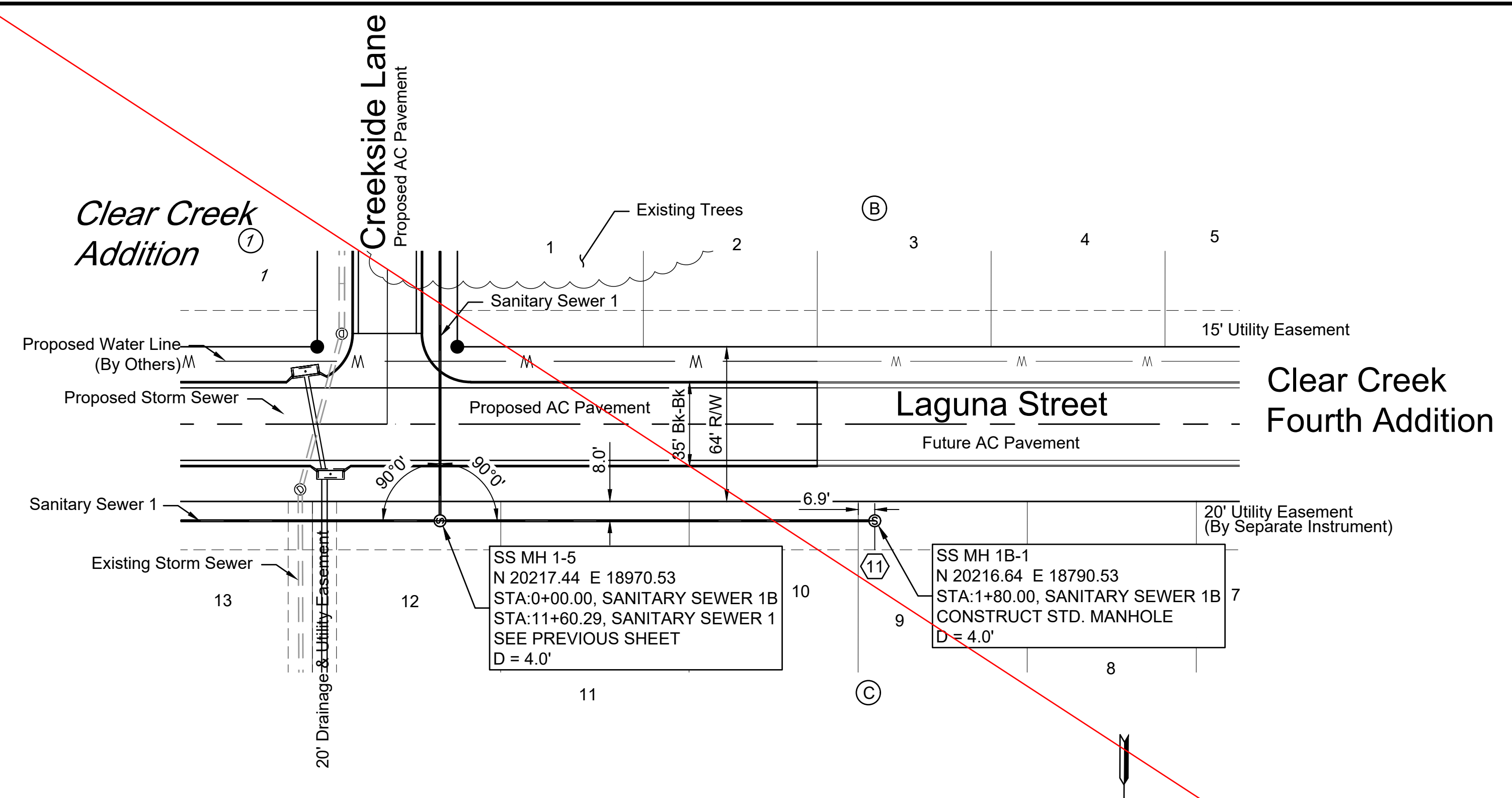


SANITARY SEWER 1B & 2

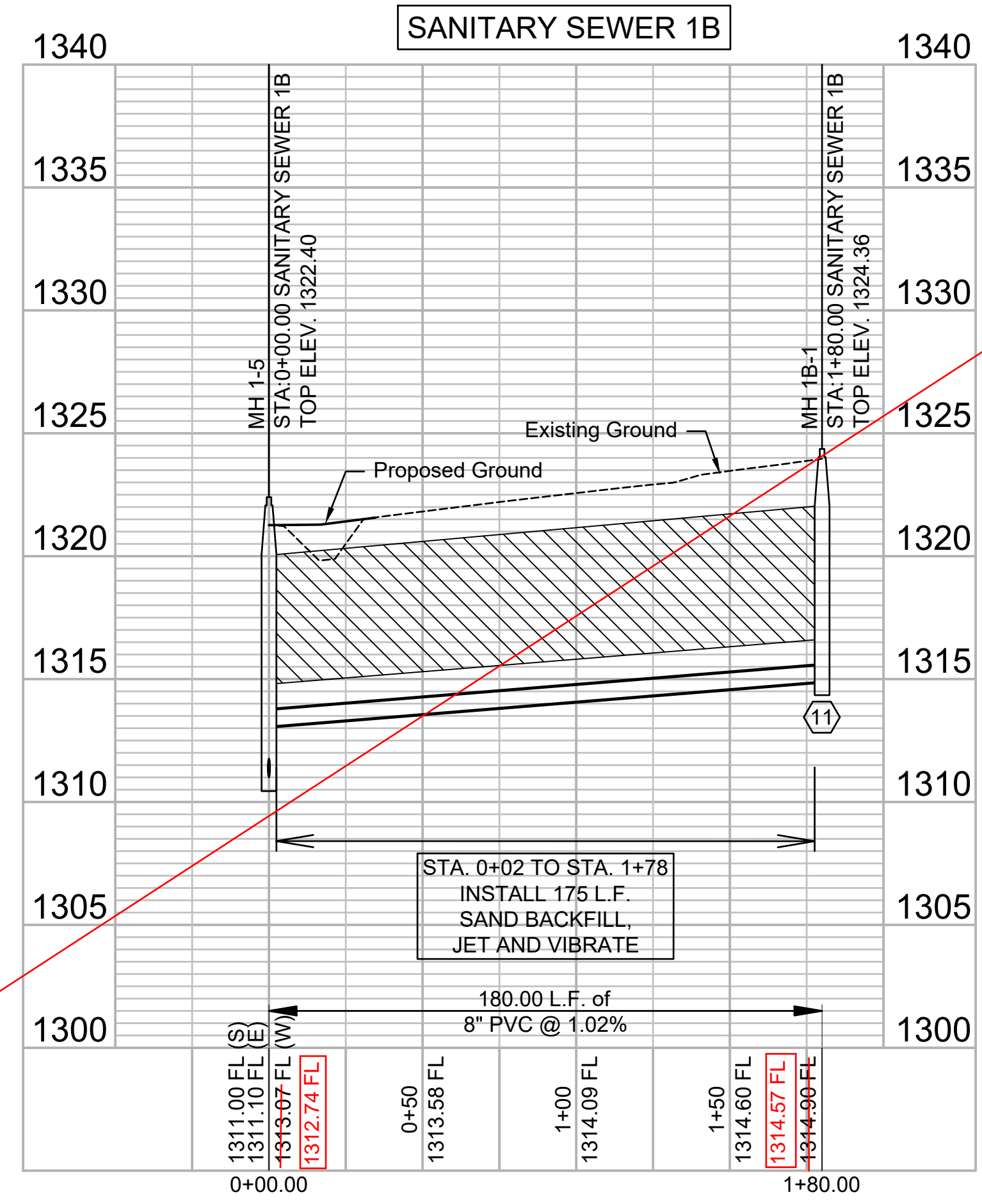
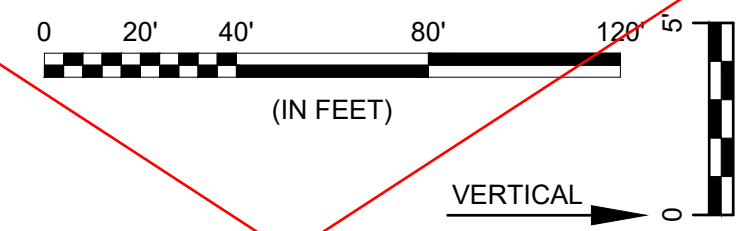
JOB NO.: 20T41005
 DATE: NOV 2020
 DESIGNED BY: EJG
 DRAWN BY: CDJ

BAR IS ONE INCH ON ORIGINAL DRAWING
 IF NOT ONE INCH ON THIS SHEET, ADJUST SCALES ACCORDINGLY.

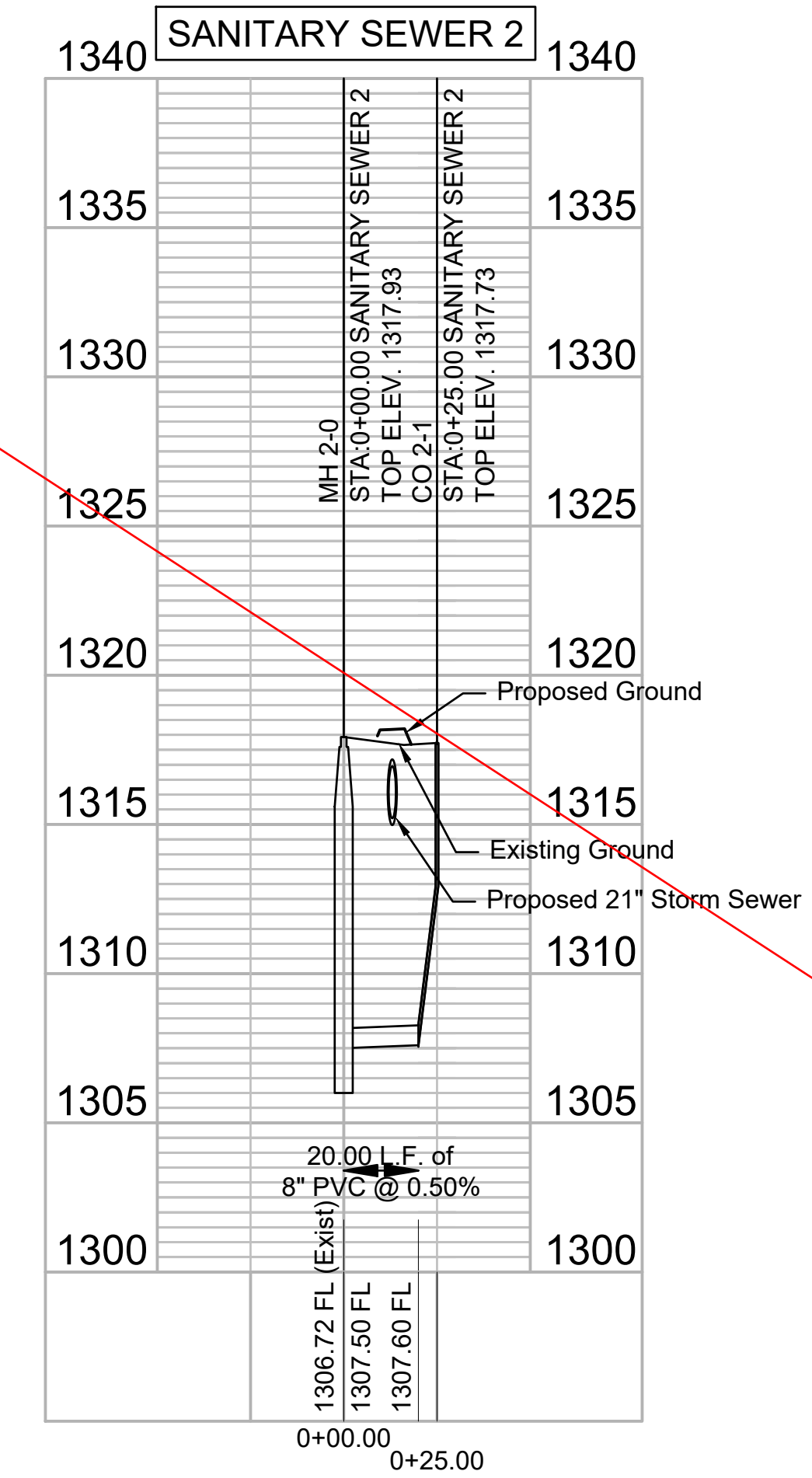
DRAWING NUMBER
 SHEET NUMBER **8** OF **16**



NUMBER	TYPE	SERVING			STATION/DIRECTION	FOR INFORMATION ONLY	
		LOT NO.	BLOCK NO.	LINE NO.		APPROX. LENGTH 4" PIPE	VERTICAL
11	4" MH Stub	9	C	1B	1+80 Right (MH)	3.0'	9.5'



SEE REVISED SHEET



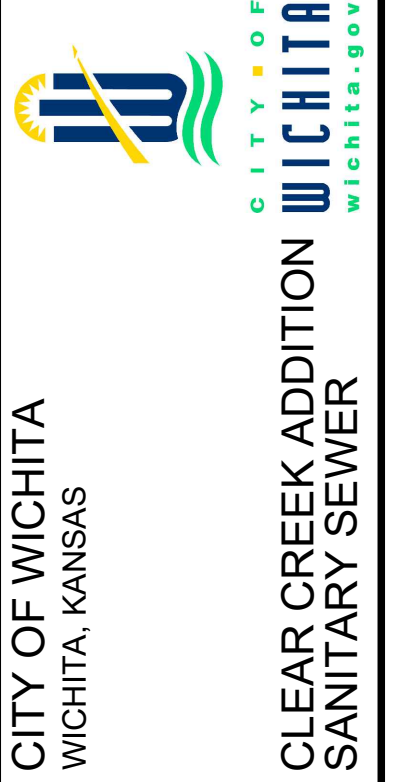
File: L:\2020\20T41005 - Clear Creek Ph 6\Drawings\C3D\SANITARY SEWER 2-3.dwg Last Save: 11/16/2020 8:41 AM Last saved by: CDJurey
 Last plotted by: Jurey, Caleb D. Plot Date: 11/16/2020 9:51 AM Plot Scale: None



© 2020 GARVER, LLC
 THIS DOCUMENT, ALONG WITH THE IDEAS AND DESIGNS CONVEYED HEREIN, SHALL BE CONSIDERED INSTRUMENTS OF PROFESSIONAL SERVICE AND ARE PROPERTY OF GARVER, LLC. ANY USE, REPRODUCTION, OR DISTRIBUTION OF THIS DOCUMENT, ALONG WITH THE IDEAS AND DESIGN CONTAINED HEREIN, IS PROHIBITED UNLESS AUTHORIZED IN WRITING BY GARVER, LLC OR EXPLICITLY ALLOWED IN THE GOVERNING PROFESSIONAL SERVICES AGREEMENT FOR THIS WORK.



BY	DESCRIPTION	DATE	REV.



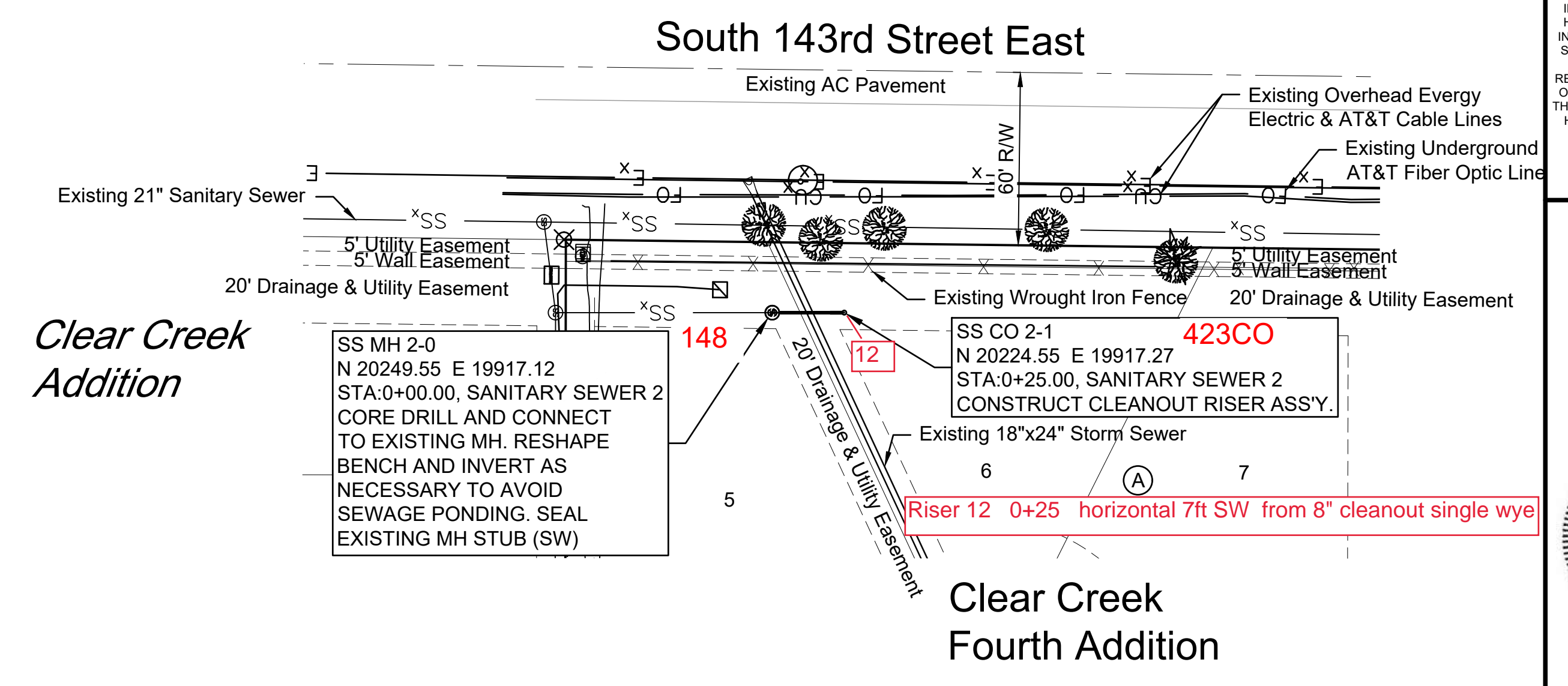
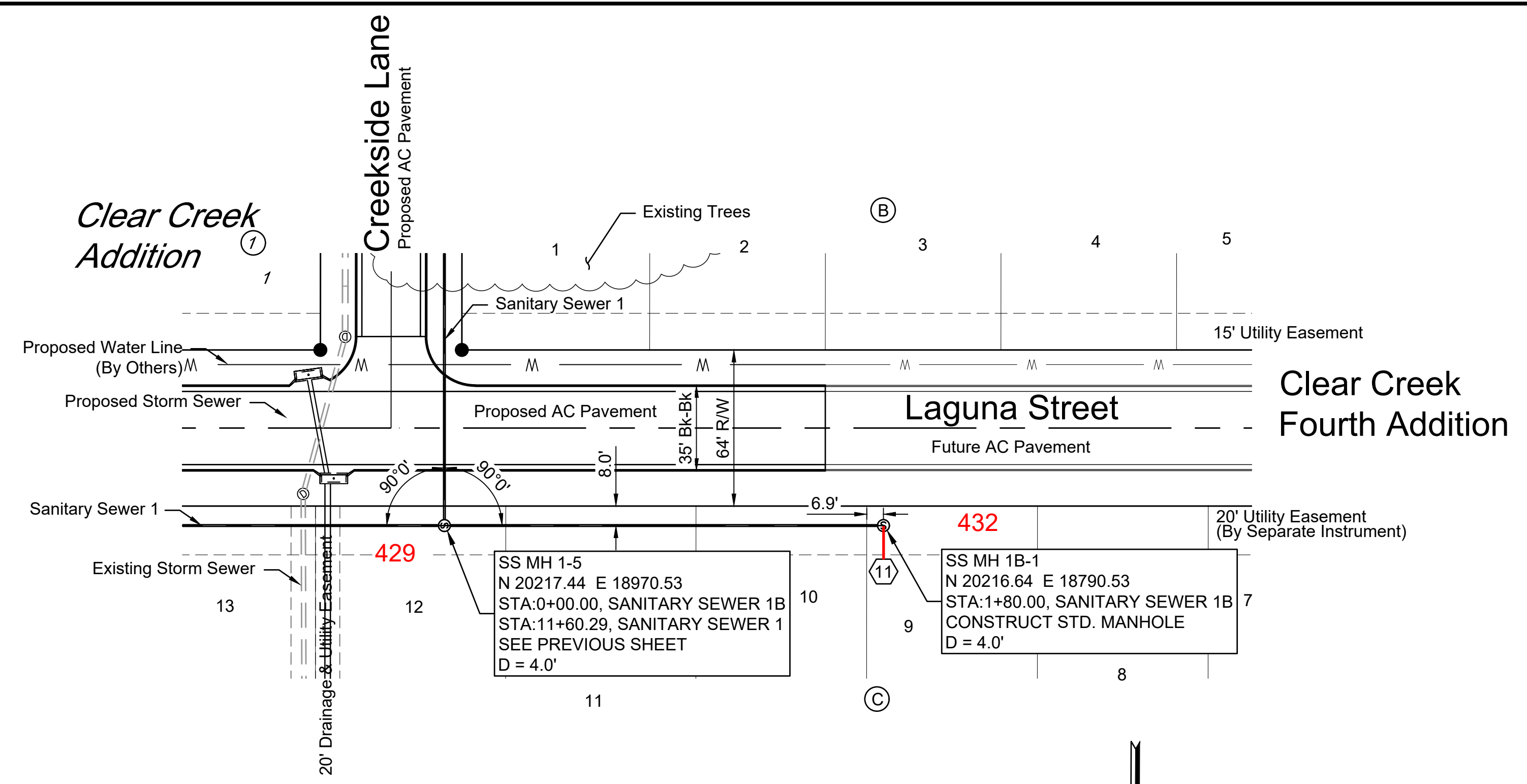
SANITARY SEWER 1B & 2

JOB NO.: 20T41005
 DATE: NOV 2020
 DESIGNED BY: EJG
 DRAWN BY: CDJ

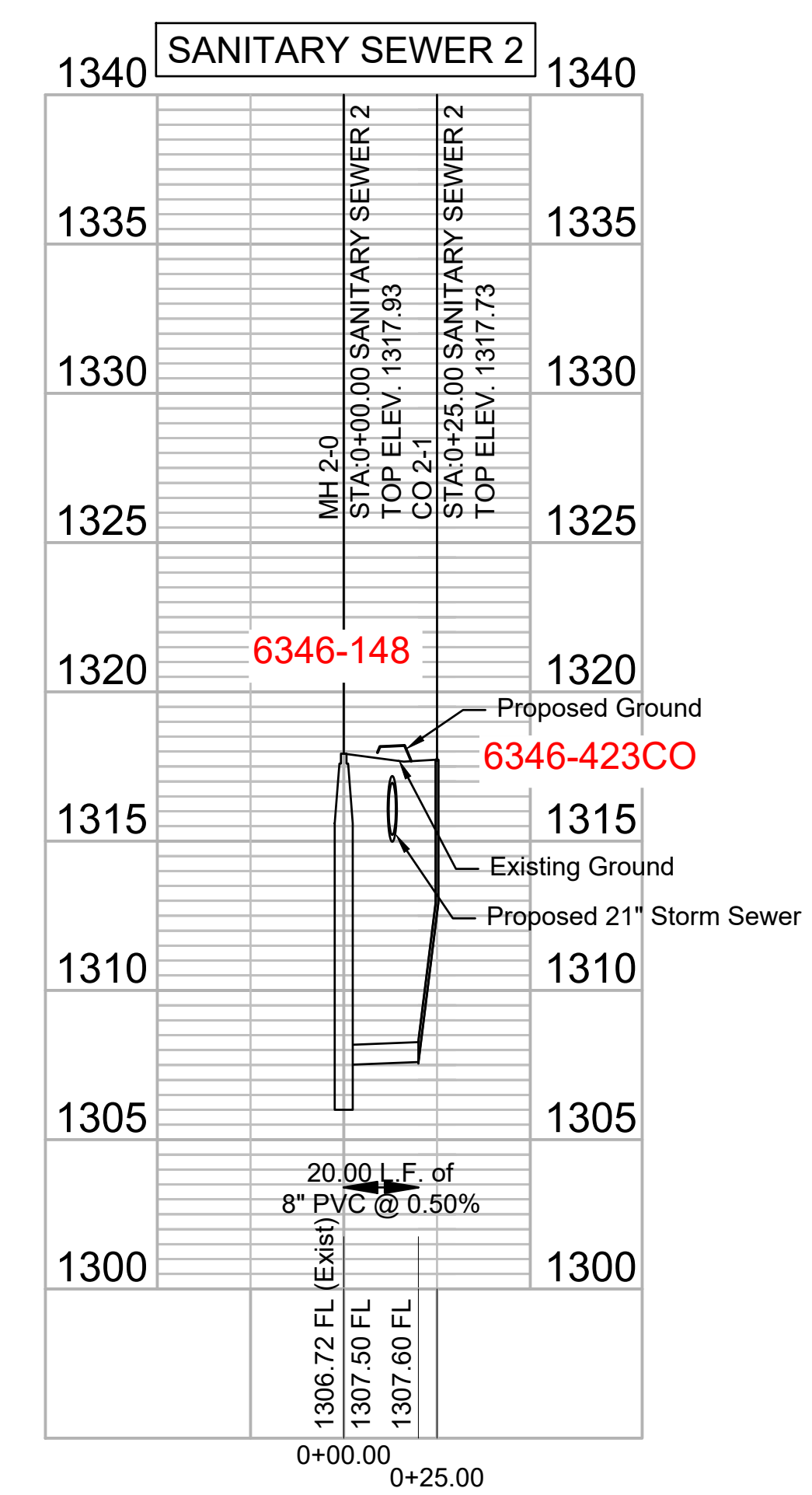
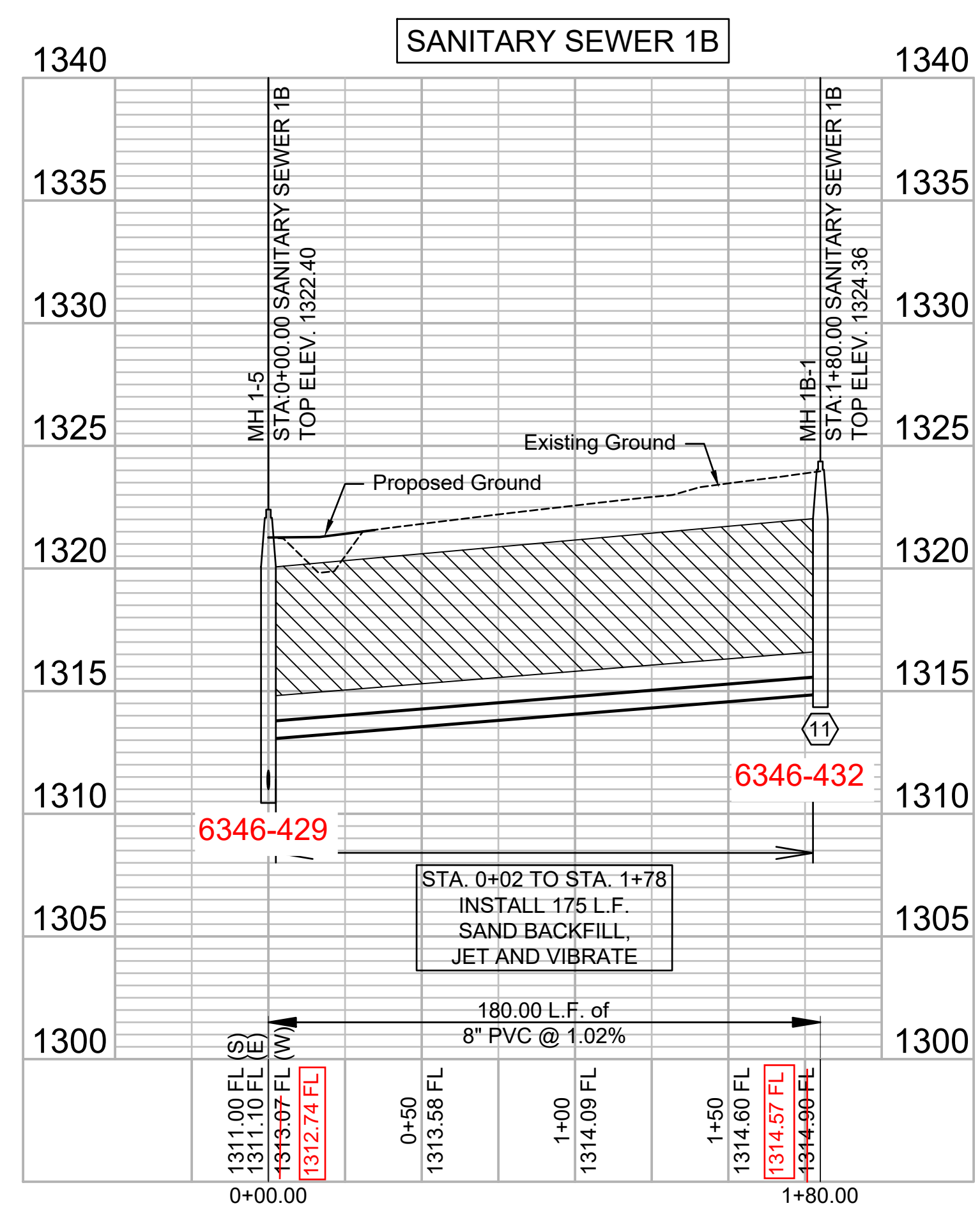
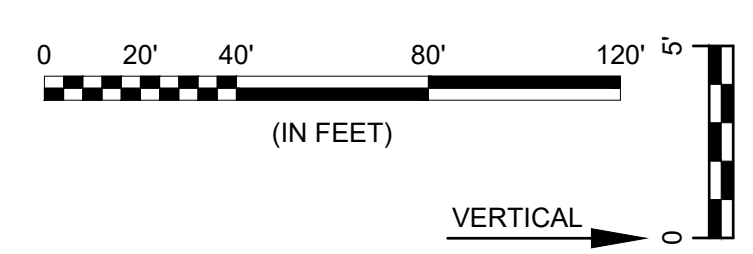
BAR IS ONE INCH ON ORIGINAL DRAWING
 IF NOT ONE INCH ON THIS SHEET, ADJUST SCALES ACCORDINGLY.

DRAWING NUMBER

SHEET NUMBER **8** OF **16**



NUMBER	TYPE	SERVING			STATION/DIRECTION	FOR INFORMATION ONLY	
		LOT NO.	BLOCK NO.	LINE NO.		APPROX. LENGTH 4" PIPE	VERTICAL
11	4" MH Stub	9	C	1B	1+80 Right (MH)	3.0'	9.5'



File: L:\2020\20T41005 - Clear Creek Ph 6\Drawings\C3D\SANITARY SEWER 2-3.dwg, Last Saved: 11/16/2020 8:41 AM, Last saved by: CDJurey
 Last plotted by: Jurey, Caleb D., Plot Style: ---, Plot Scale: 1:2,5849, Plot Date: 11/16/2020 9:51 AM, Plotter used: None