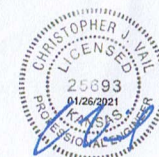


RECEIVED FOR INFORMATION ONLY

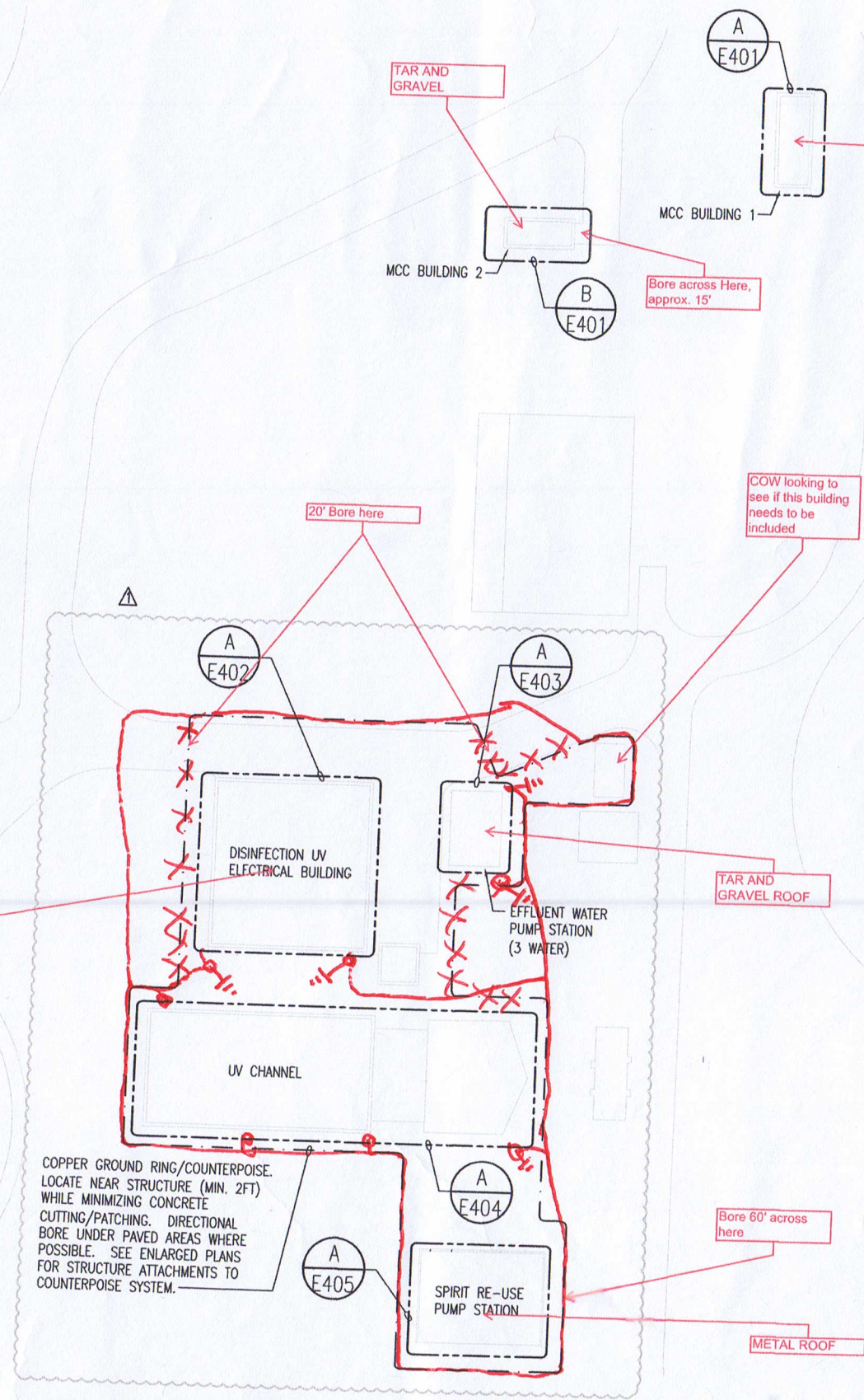
This document has not been reviewed for content or compliance with the Contract Documents. Contractor at all times remains solely responsible for compliance with the Contract Documents, including dimensions and safety analyses. Deviations are not approved unless Contractor has in writing called Engineer's attention to such deviation at the time of submission and Engineer has in writing approved the specific deviation. No review by Engineer relieves Contractor from responsibility for errors or omissions in Compliance Submittals.
510

PEC
PROFESSIONAL ENGINEERING CONSULTANTS, P.A.
Rick Whitehill 7/19/2021
DATE



PLANT TWO - UV LIGHTNING PROTECTION
CITY OF WICHITA, KANSAS

Sheet 11-02-2020, 10:21:51 AM by CHRIS.VAIL
Rick Whitehill - Civil 01/19/2021 8:02:35 AM by CHRIS.VAIL
UV Wichita - Civil 01/19/2021 10:09:06 AM by CHRIS.VAIL - E301 SITE PLAN



A SITE PLAN
0' 30' 60' 1" = 30'-0"

ELECTRICAL SITE PLAN NOTES:

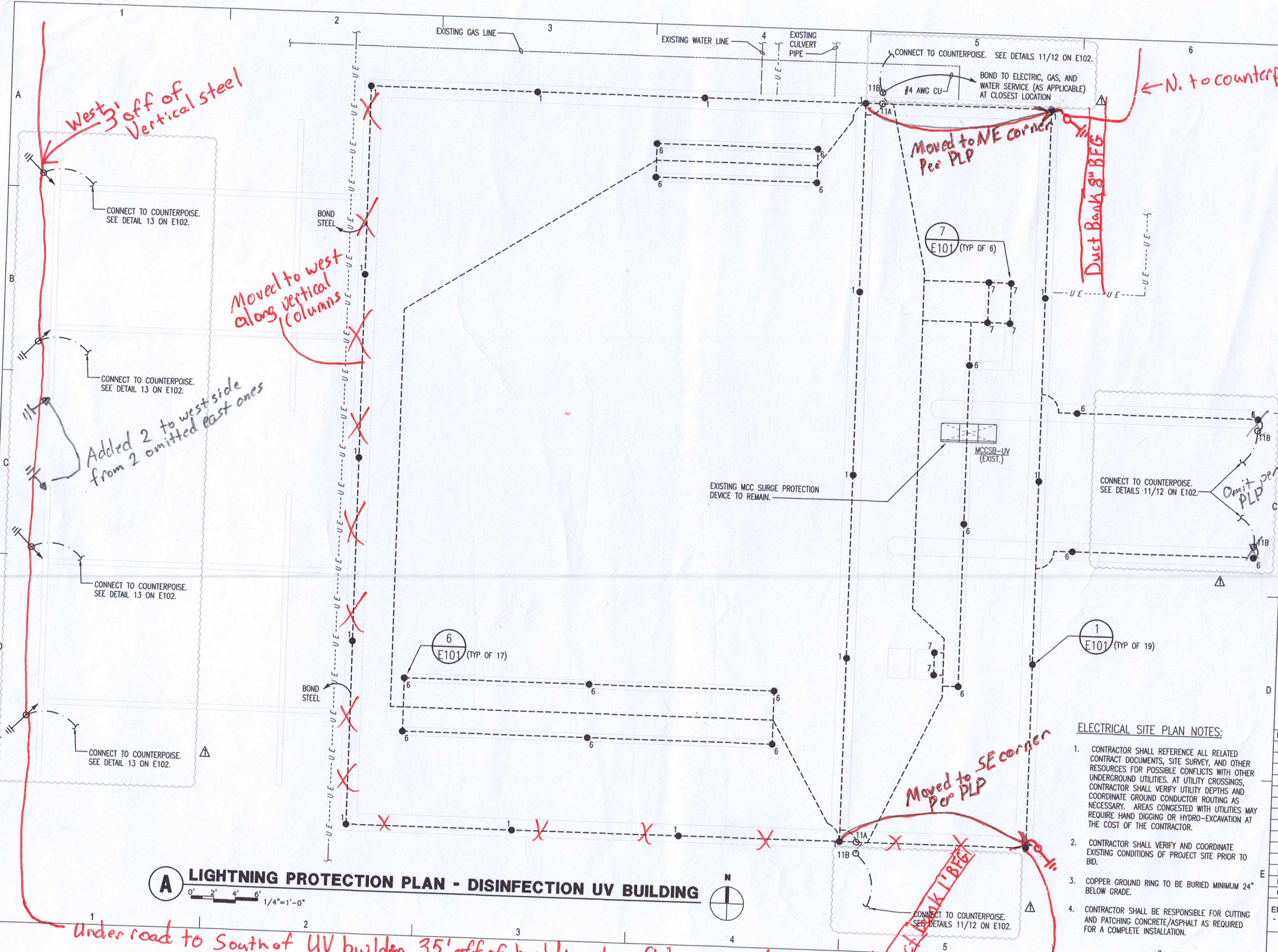
- CONTRACTOR SHALL REFERENCE ALL RELATED CONTRACT DOCUMENTS, SITE SURVEY, AND OTHER RESOURCES FOR POSSIBLE CONFLICTS WITH OTHER UNDERGROUND UTILITIES. AT UTILITY CROSSINGS, CONTRACTOR SHALL VERIFY UTILITY DEPTHS AND COORDINATE GROUND CONDUCTOR ROUTING AS NECESSARY. AREAS CONGESTED WITH UTILITIES MAY REQUIRE HAND DIGGING OR HYDRO-EXCAVATION AT THE COST OF THE CONTRACTOR.
- CONTRACTOR SHALL VERIFY AND COORDINATE EXISTING CONDITIONS OF PROJECT SITE PRIOR TO BID.
- COPPER GROUND RING TO BE BURIED MINIMUM 24" BELOW GRADE.
- CONTRACTOR SHALL BE RESPONSIBLE FOR CUTTING AND PATCHING CONCRETE/ASPHALT AS REQUIRED FOR A COMPLETE INSTALLATION.

Issue:	REVISION #1	11/3/20
JOB NO.	197043-009	
DATE	JANUARY 2021	
PM	RWW	
DESIGNED BY	CJV	
DRAWN BY	ABP	
CHECKED BY	SMS	

SITE PLAN

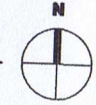
E301

Sheet 11-04-2020 7:53:18 AM by CHRIS.MVL
 Rev. 01/26/2021 8:02:48 AM by CHRIS.MVL
 UV Wichita - Cont 197043-009 (Elec) Drawings 197043-009 - E402 ENLARGED ELECTRICAL PLAN - DISINFECTION BUILDING



A LIGHTNING PROTECTION PLAN - DISINFECTION UV BUILDING

0' 2' 4' 6' 1/4"=1'-0"



ELECTRICAL SITE PLAN NOTES:

1. CONTRACTOR SHALL REFERENCE ALL RELATED CONTRACT DOCUMENTS, SITE SURVEY, AND OTHER RESOURCES FOR POSSIBLE CONFLICTS WITH OTHER UNDERGROUND UTILITIES. AT UTILITY CROSSINGS, CONTRACTOR SHALL VERIFY UTILITY DEPTHS AND COORDINATE GROUND CONDUCTOR ROUTING AS NECESSARY. AREAS CONGESTED WITH UTILITIES MAY REQUIRE HAND DIGGING OR HYDRO-EXCAVATION AT THE COST OF THE CONTRACTOR.
2. CONTRACTOR SHALL VERIFY AND COORDINATE EXISTING CONDITIONS OF PROJECT SITE PRIOR TO BID.
3. COPPER GROUND RING TO BE BURIED MINIMUM 24" BELOW GRADE.
4. CONTRACTOR SHALL BE RESPONSIBLE FOR CUTTING AND PATCHING CONCRETE/ASPHALT AS REQUIRED FOR A COMPLETE INSTALLATION.

Issue:	REVISION #1	11/3/20

JOB NO.	197043-009
DATE	JANUARY 2021
PM	RWW
DESIGNED BY	CJV
DRAWN BY	ABP
CHECKED BY	SMS

ENLARGED ELECTRICAL PLAN - DISINFECTION UV BUILDING

E402



PLANT TWO - UV LIGHTNING PROTECTION
 CITY OF WICHITA, KANSAS

Under road to South of UV building 35' off of building to SW corner of UV channel

