

**GENERAL NOTES**

- The Contractor shall comply with all applicable safety regulations. All construction shall be completed following current City Standard Specifications and Special Provisions.
- Contractor will be required to provide notice to utility companies a minimum of seventy-two (72) hours prior to any excavation, as follows:  
Kansas One-Call 687-2470  
The Contractor must notify the following in case of an emergency:  
AT&T 1-800-246-8464  
Black Hills Energy 1-800-694-8989  
City of Wichita Water & Sewer 1-316-219-8921  
City of Wichita Stormwater 1-316-268-4090  
City of Wichita Traffic 1-316-268-4034  
Cox Communications 1-888-249-3530  
Kansas Gas Service 1-888-482-4950  
Evergy 1-800-544-4857
- Utility service lines, poles, etc. are to be adjusted as necessary by others prior to construction unless the plans specifically call for their adjustment by the Contractor or unless the plans specifically identify a utility to be adjusted by its owner during construction. Existing utilities and their location, as shown on the plans, represent the best information obtainable for design. The Contractor will be required to work around existing utilities within the right-of-way which do not conflict with proposed construction.
- Rubble from the removal of miscellaneous structures and excess excavation which is to be wasted shall be disposed of on site to be provided by the Engineer as to suitability, appearance, and site location. Locations, in the opinion of the Engineer, that will leave an unsightly appearance will not be approved. All disposal sites must be approved by the Kansas Department of Health and Environment. Material either stockpiled or disposed of in a flood plain will require a Kansas State Board of Agriculture permit. Any material dumped in waters of the United States or wetlands is subject to U.S. Corps of Engineers permitting regulations. Any material buried or stockpiled beyond approved construction limits will require additional archaeological investigations unless buried in a previously approved borrow location.
- Trees and shrubs in public right-of-way which are in direct conflict with proposed new construction shall be removed by the Contractor with the City Engineer's approval. Trees and shrubs which are not in direct conflict with proposed new construction shall be saved and protected from damage.
- The Contractor shall give all property owners and/or tenants of developed property abutting the construction of this project a minimum of ten (10) days' notice prior to start of construction.
- The Contractor shall be responsible for preserving property irons. The Contractor will be required to re-establish any property irons which are damaged or destroyed by his construction operations. Such irons shall be re-established by a licensed land surveyor in accordance with state laws.
- The Engineering Division shall field locate water valves one time during construction when requested by the Contractor. It shall be the Contractor's responsibility to preserve such field locations during the construction process. Water valves, valve boxes or fire hydrants damaged during construction shall be repaired by the Contractor at his own expense. Valve boxes and water meters within the project limits shall be adjusted to match final grades by the Contractor.
- The Contractor Shall notify the inspecting engineer and Dawnita Reinhardt at 316-268-4574 with the City of Wichita with the anticipated construction start date and notify them of project completion. Staking and inspection for this project will be the responsibility of the Contractor.
- If traffic will be impacted by construction, a traffic control plan must be submitted and approved by the City Traffic Engineer, Mike Armour at [traffic@wichita.gov](mailto:traffic@wichita.gov) before construction can begin. The Contractor shall be responsible for all traffic control measures to facilitate construction. All construction zone markings and signage shall conform to the latest version of the Manual on Uniform Traffic Control Devices (MUTCD) as published by the US Dept. of Transportation, Federal Highway Administration. All costs associated with construction markings and signage shall be the Contractors responsibility.
- All elevations shown are NAVD 88.
- All areas disturbed during construction that will not be under proposed pavement shall be restored to match existing conditions.
- Any sidewalk, drive approach, curb, or street pavement removed to construct project must have a pavement cut permit and be replaced by the City Contractor. Permits can be obtained by calling 316-268-4501 or 316-268-4480.
- All applicable fees (tap, equity, in lieu of & main benefit) must be paid before any connections can be made on this project. Quotes can be obtained on fees by calling 316-268-4555.
- City Maintenance of Sanitary Sewer main ends at last structure within easement or right-of-way.
- All stubs and capped pipes shall be located with green plastic tape in the same manner as risers.
- Connecting to Existing Manholes:  
Prior to laying sewer lines using existing stubs in existing manholes, the Contractor shall expose and verify the elevation, grade and alignment of existing stubs and notify the Engineer of any deviation from the plans. Where the stub is unusable due to elevation grade or alignment, the Contractor shall remove the stub, plug the hole, and reshape the existing manhole invert to provide smooth flow. Where connecting to an existing manhole that does not have an existing stub, the Contractor shall core cut into existing manhole wall to make connection using approved water stop gasket and reshape the existing manhole invert to provide smooth flow. The cost to connecting to existing manholes is incidental to the project.
- Contractor shall limit the extent of trench open overnight and weekends to less than 50 feet.
- Contractor shall provide positive drainage away from all manhole covers.
- The Contractor shall prevent any construction debris from entering the existing sanitary sewer during construction.
- The Contractor shall be responsible for maintaining continuous flow of sewage through construction. Contractors proposed method for maintaining sewage flow shall be submitted and approved by the Sewer Maintenance Division (316-268-4073) prior to starting and by-passing of sewage flows.
- Any over excavation from manhole and pipe removal shall be backfilled with AB-3 compacted to 90-95% ASTM D698.
- The Contractor shall protect from damage and support existing utilities through construction as approved by the utility owner and the Engineer at the Contractor's expense.

# DOLLAR GENERAL SANITARY SEWER PLANS

3445 N. Womer Street

CITY OF WICHITA, KANSAS  
Gary Janzen, P.E. City Engineer  
2021-012293 PPS (53030982)

AS BUILTS	
Contractor: Ewertz Excavation 8/24/2021	Project Inspector: <del>Tom Jones</del> LARRY GANN <b>KEMILLER</b> ENGINEERING PA 117 E. Lewis, Wichita, KS 67202 (316)264-0242

D. Reinhardt - City of Wichita, Inspector  
Release Date: 8/31/2021  
: apr 9/1/2021

INDEX OF SHEETS

- |       |   |
|-------|---|
| C1.   | TITLE SHEET   |
| C2.   | PLAN & PROFILE  |
| C3.   | TRAFFIC CONTROL PLAN                                    |
| C4.   | STANDARD DETAIL SS-101                                  |
| C5.   | STANDARD DETAIL SS-102                                  |
| TE700 | TRAFFIC CONTROL GENERAL NOTES                           |
| TE702 | TRAFFIC CONTROL CHANNELIZING DEVICES                    |
| TE704 | TRAFFIC CONTROL CLOSURES                                |
| TE705 | TRAFFIC CONTROL ACCESS THROUGH WORK AREA                |
| TE710 | TRAFFIC CONTROL SIGN INFORMATION                        |
| TE712 | TRAFFIC CONTROL SIGN POSTS                              |
| TE720 | TRAFFIC CONTROL SHOULDER WORK THROUGH UNDIVIDED HIGHWAY |
| TE730 | TRAFFIC CONTROL FLAGGER OR PILOT CAR                    |

EROSION CONTROL STANDARD DETAILS:  
See Detail Sheets SW-501, SW-502, SW-503,  
SW-504 & SW-505 on the City Website

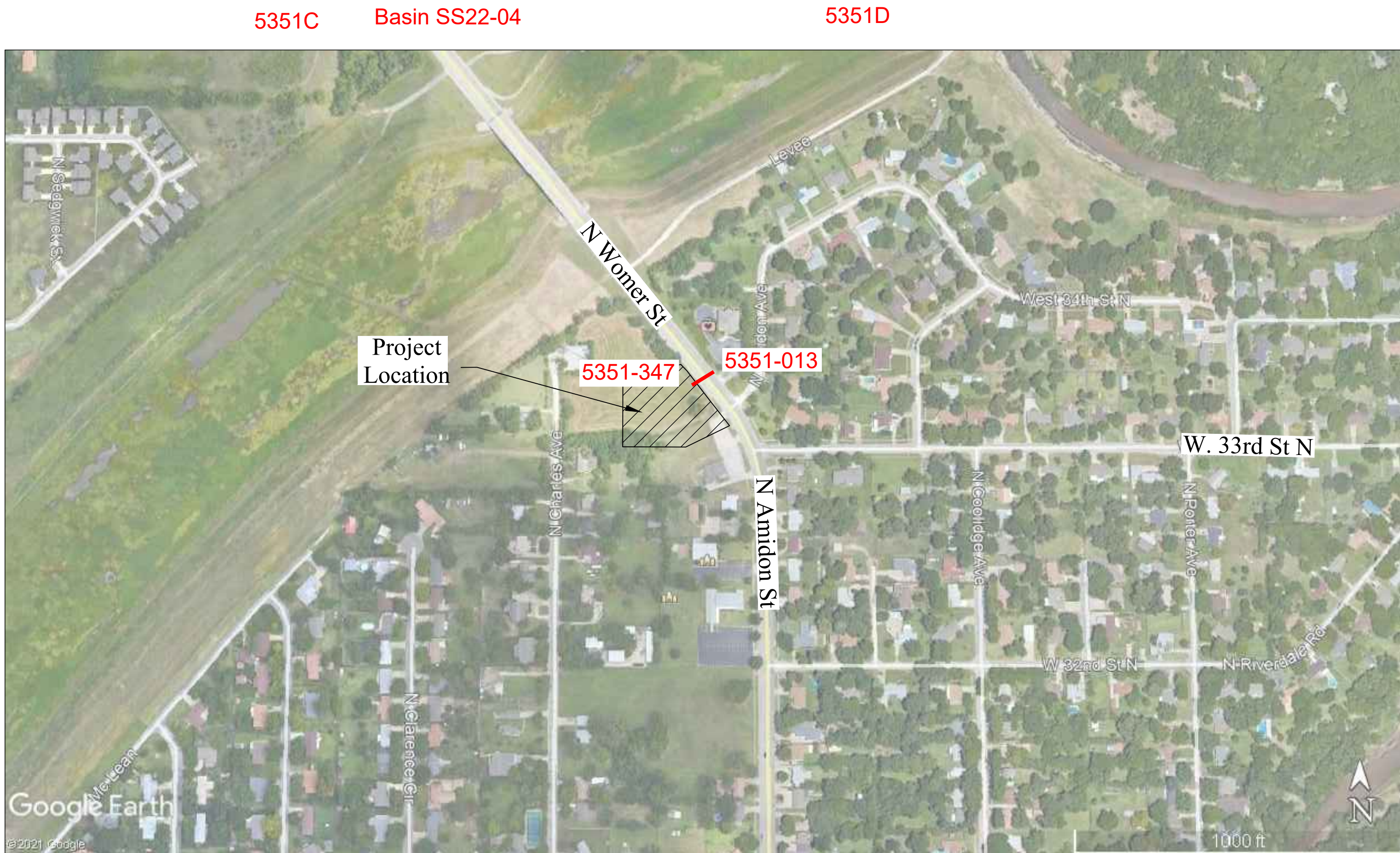
APPROVED AS NOTED  
BY WICHITA PUBLIC WORKS  
ENGINEERING DIVISION

Engineering Shawn Mellies  
Utilities ~~Greg Lott~~ **Debra Ary**

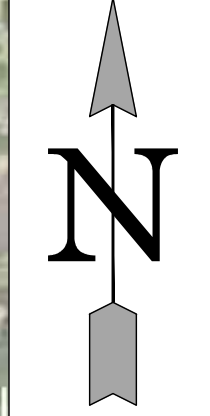
NOTE TO CONTRACTORS

Inspection and testing for this project is to be provided by a Licensed Consulting Engineering Firm under contract with the Owner/Developer. Said Inspection to be in accordance with the City of Wichita standard construction engineering practices and certified be a Licensed Professional Engineer in the State of Kansas. No work shall be performed by the Contractor without such inspection nor shall any work be commenced without written authorization by the City Engineering. All Construction and Materials shall comply with the current City of Wichita Specifications and Standards and Special Provisions. (on file and available at Wichita.gov).

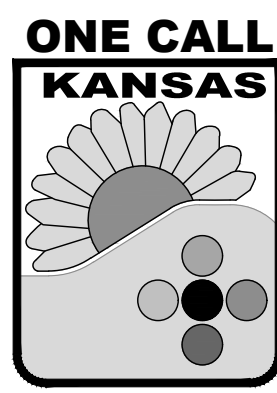
An approved copy of these plans signed by City staff are required on-site.



VICINITY MAP  
SECTION 03-T11S-R22E  
NOT TO SCALE



KANSAS ONE-CALL:  
**1-800-DIG-SAFE**  
(1-800-344-7233)

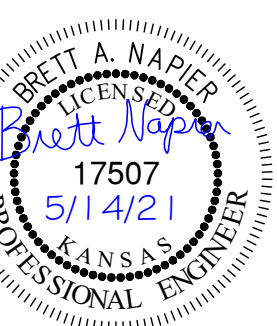


Protect yourselves and your property against underground utility damage and liability.  
Find out where the underground utility lines might be buried before you dig.  
Anyone digging in Kansas must call before digging. The person who is doing the work is responsible for calling KOC. If the owner contracts with a professional excavator to do the excavation then the professional excavator is responsible for calling KOC.  
You (the digger) will need to provide information about the work site when you call. This is a FREE service.  
CALL BEFORE YOU DIG  
IT'S THE LAW.  
[Chapter 66.--PUBLIC UTILITIES  
Article 18.--UTILITY DAMAGE PREVENTION]

SUMMARY OF QUANTITIES

1. MOBILIZATION	LUMP SUM
2. TESTING	LUMP SUM
3. DEMOBILIZATION	LUMP SUM
4. 8" PVC SDR 35	100 L.F.
5. 4' DIA. MANHOLE	1 EA.
6. 4" MH STUB	1 EA.
7. EXTRA DEPTH OF 4' DIA. MH > 6'	6.0 V.F.
8. CONNECT TO EXIST. MANHOLE	1 EA.
9. STREET BORE W/ 16" STEEL CASING	85 L.F.
10. CONSTRUCTION STAKING	LUMP SUM

PROJECT BENCHMARKS	
CP#1	Chiseled "+" in top of curb N=1707198.34; E=1640783.05 Elevation = 1323.09
CP#2	5/8" Rebar N=1707066.77; E=1640870.63 Elevation = 1320.15
CP#3	1/2" Rebar N=1707130.46; E=1640377.57 Elevation = 1320.54



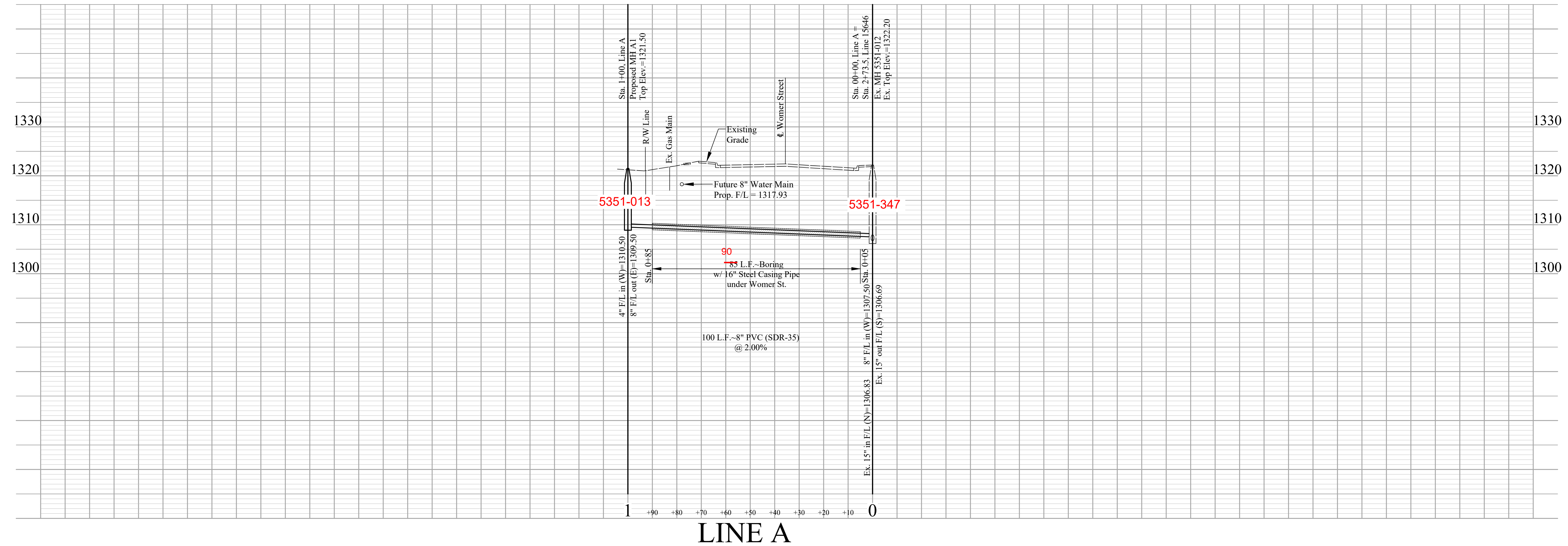
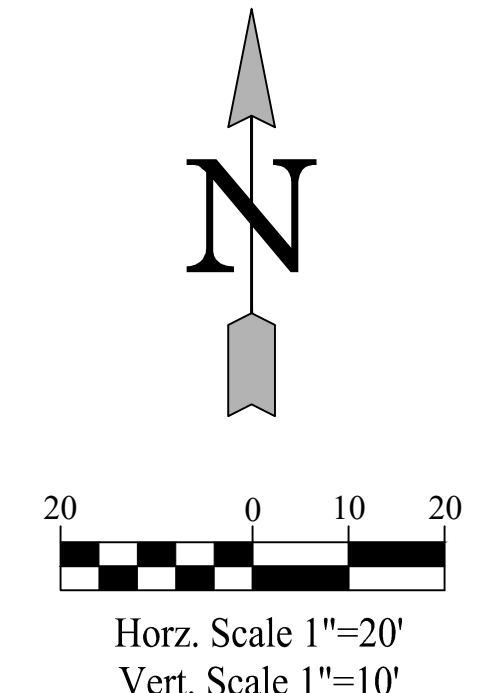
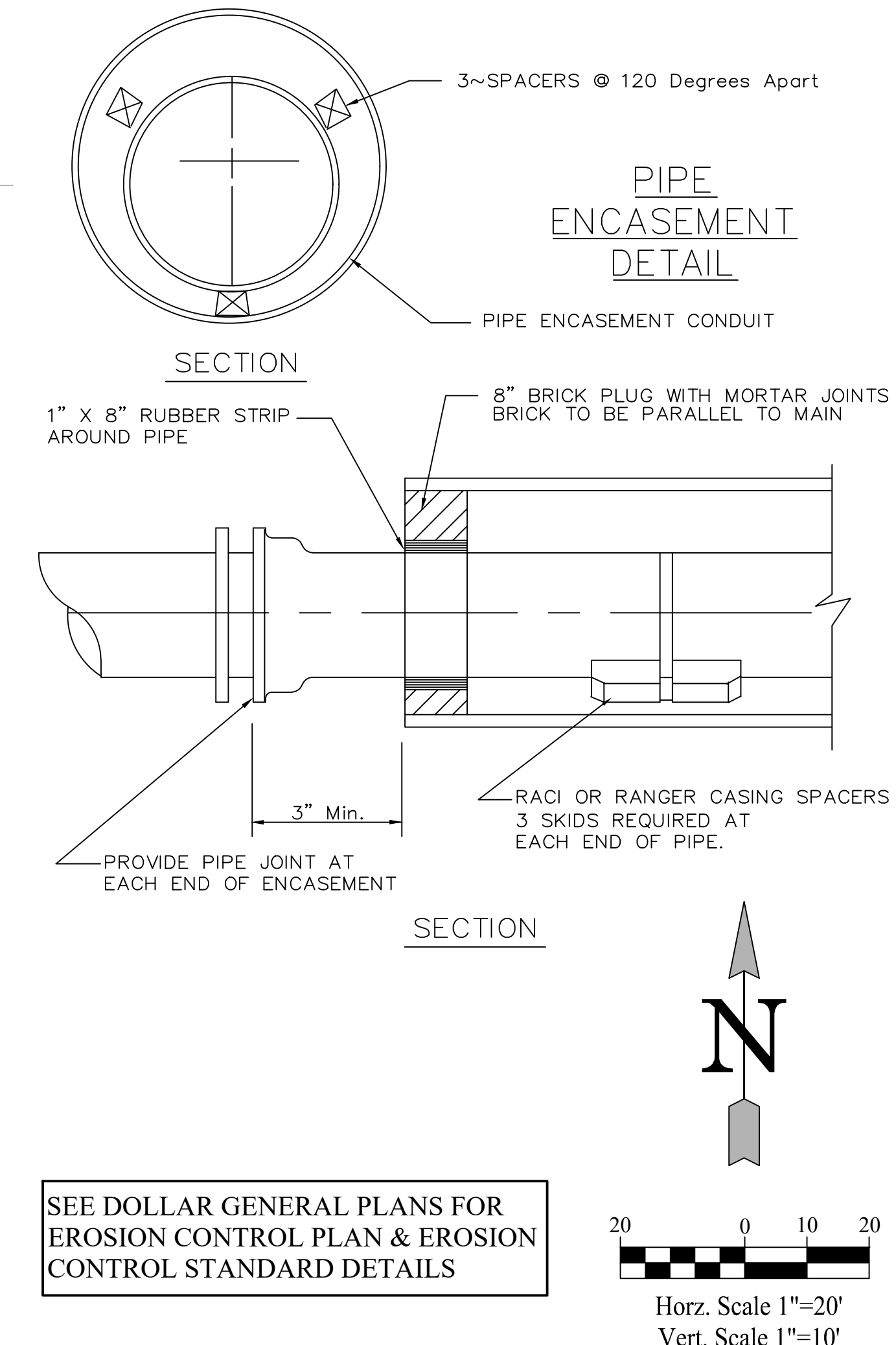
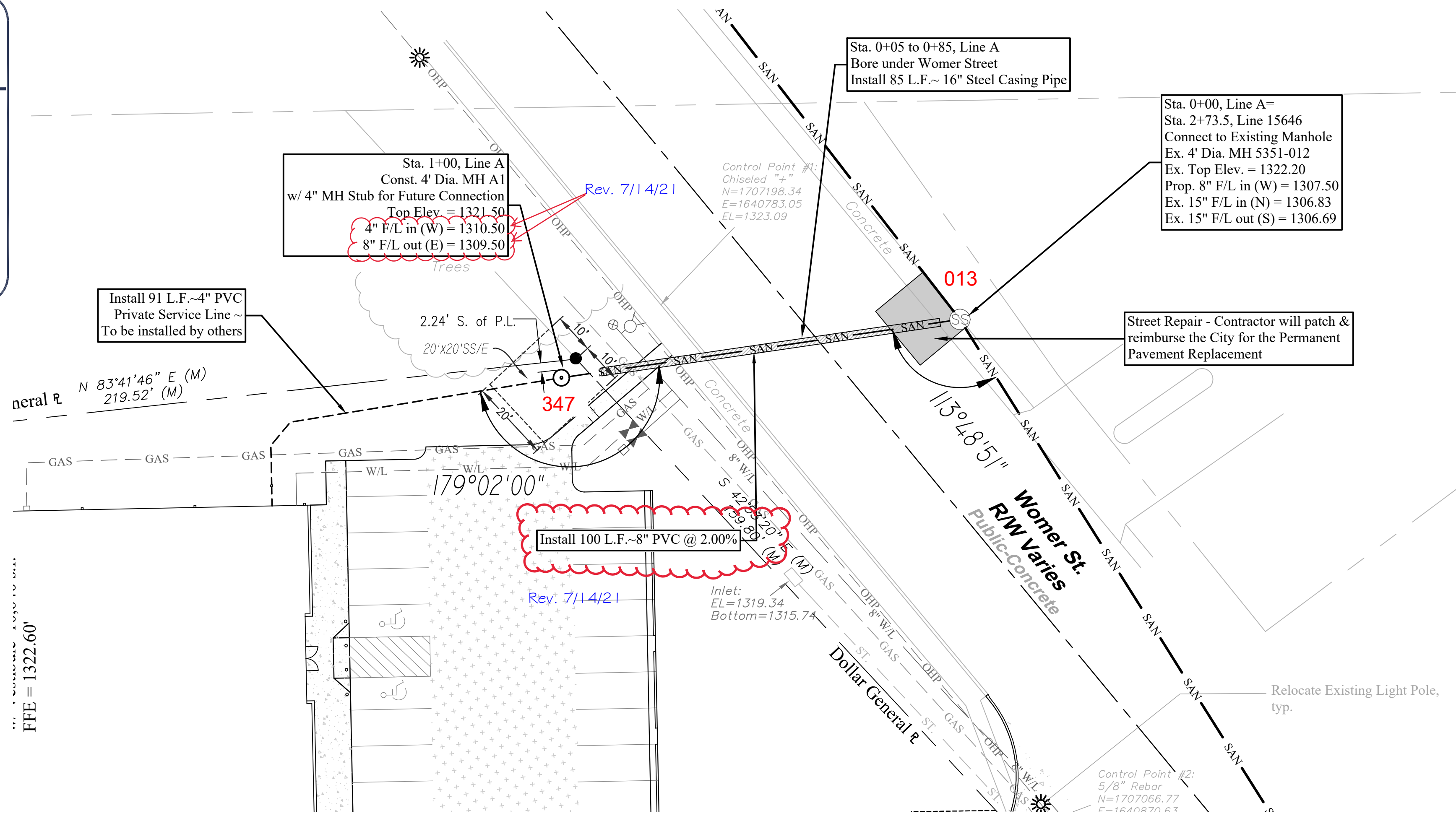
**KANSAS DEPARTMENT OF HEALTH AND ENVIRONMENT**

APPROVED BY: \_\_\_\_\_  
DATE: \_\_\_\_\_

AS BUILTS



117 E. Lewis,  
Wichita, KS 67202 (316)264-0242



Sheet - C2  
 Plan & Profile  
 Line A

2021-01  
 Dollar General  
 Wichita, Kansas  
 Sanitary Sewer Plans

Prepared For:  
 COLBY CAPITAL  
 REAL ESTATE DEVELOPMENT  
 C/O TYLER S. OLIVER  
 13356 METCALF  
 O.P., KS 66213  
 (913) 438-9900

**NAPIER ENGINEERING, LLC**

207 S. 5th Street  
 Leavenworth, KS 66048  
 913.375.0482  
 brett@napiereng.com

Date of Preparation /  
 Revision:  
 April 1, 2021

NO.	DATE	DESCRIPTION	BY
1	4/20/21	City Review Comments	BAN
2	4/27/21	Moved San Line - New Location	BAN
3	5/14/21	City Review Comments	BAN
4	7/14/21	Corrected Const. Notes	BAN

BRETT A. NAPIER  
 LICENSED  
 17507  
 PROFESSIONAL ENGINEER  
 KANSAS