

GENERAL NOTES

- THE CONTRACTOR SHALL COMPLY WITH ALL APPLICABLE SAFETY REGULATIONS. ALL CONSTRUCTION SHALL BE COMPLETED FOLLOWING CURRENT CITY STANDARD SPECIFICATIONS AND SPECIAL PROVISIONS.
- CONTRACTOR WILL BE REQUIRED TO PROVIDE NOTICE TO UTILITY COMPANIES A MINIMUM OF SEVENTY-TWO (72) HOURS PRIOR TO ANY EXCAVATION, AS FOLLOWS:
KANSAS ONE-CALL 687-2470
THE CONTRACTOR MUST NOTIFY THE FOLLOWING IN CASE OF AN EMERGENCY:
AT&T 1-800-246-8464
BLACK HILLS ENERGY (GAS) 1-800-694-8989
CITY OF WICHITA WATER & SEWER 1-316-219-8921
CITY OF WICHITA STORMWATER 1-316-268-4090
CITY OF WICHITA TRAFFIC 1-316-268-4034
COX COMMUNICATIONS 1-888-249-3530
KANSAS GAS SERVICE 1-888-482-4950
WESTAR ENERGY 1-800-544-4857
- UTILITY SERVICE LINES, POLES, ETC. ARE TO BE ADJUSTED AS NECESSARY BY OTHERS PRIOR TO CONSTRUCTION UNLESS THE PLANS SPECIFICALLY CALL FOR THEIR ADJUSTMENT BY THE CONTRACTOR OR UNLESS THE PLANS SPECIFICALLY IDENTIFY A UTILITY TO BE ADJUSTED BY ITS OWNER DURING CONSTRUCTION. EXISTING UTILITIES AND THEIR LOCATION, AS SHOWN ON THE PLANS, REPRESENT THE BEST INFORMATION OBTAINABLE FOR DESIGN. THE CONTRACTOR WILL BE REQUIRED TO WORK AROUND EXISTING UTILITIES WITHIN THE RIGHT-OF-WAY WHICH DO NOT CONFLICT WITH PROPOSED CONSTRUCTION.
- RUBBLE FROM THE REMOVAL OF MISCELLANEOUS STRUCTURES AND EXCESS EXCAVATION WHICH IS TO BE WASTED SHALL BE DISPOSED OF ON SITES TO BE PROVIDED BY THE CONTRACTOR. THESE SITES SHALL BE APPROVED BY THE ENGINEER AS TO SUITABILITY, APPEARANCE AND SITE LOCATION. LOCATIONS, IN THE OPINION OF THE ENGINEER, THAT WILL LEAVE AN UNSIGHTLY APPEARANCE WILL NOT BE APPROVED. ALL DISPOSAL SITES MUST BE APPROVED BY THE KANSAS DEPARTMENT OF HEALTH AND ENVIRONMENT. MATERIAL EITHER STOCKPILED OR DISPOSED OF IN A FLOOD PLAIN WILL REQUIRE A KANSAS STATE BOARD OF AGRICULTURE PERMIT. ANY MATERIAL DUMPED IN WATERS OF THE UNITED STATES OR WETLANDS IS SUBJECT TO U.S. CORPS OF ENGINEERS PERMITTING REGULATIONS. ANY MATERIAL BURIED OR STOCKPILED BEYOND APPROVED CONSTRUCTION LIMITS WILL REQUIRE ADDITIONAL ARCHAEOLOGICAL INVESTIGATIONS UNLESS BURIED IN A PREVIOUSLY APPROVED BORROW LOCATION.
- TREES AND SHRUBS IN PUBLIC RIGHT-OF-WAY WHICH ARE IN DIRECT CONFLICT WITH PROPOSED NEW CONSTRUCTION SHALL BE REMOVED BY THE CONTRACTOR WITH THE CITY ENGINEER'S APPROVAL. TREES AND SHRUBS WHICH ARE NOT IN DIRECT CONFLICT WITH PROPOSED NEW CONSTRUCTION SHALL BE SAVED AND PROTECTED FROM DAMAGE.
- THE CONTRACTOR SHALL GIVE ALL PROPERTY OWNERS AND/OR TENANTS OF DEVELOPED PROPERTY ABOUTING THE CONSTRUCTION OF THIS PROJECT A MINIMUM OF TEN (10) DAYS NOTICE PRIOR TO START OF CONSTRUCTION.
- THE CONTRACTOR SHALL BE RESPONSIBLE FOR PRESERVING PROPERTY IRONS. THE CONTRACTOR WILL BE REQUIRED TO RE-ESTABLISH ANY PROPERTY IRONS WHICH ARE DAMAGED OR DESTROYED BY HIS CONSTRUCTION OPERATIONS. SUCH IRONS SHALL BE RE-ESTABLISHED BY A LICENSED LAND SURVEYOR IN ACCORDANCE WITH STATE LAWS.
- THE ENGINEERING DIVISION SHALL FIELD LOCATE WATER VALVES ONE TIME DURING CONSTRUCTION WHEN REQUESTED BY THE CONTRACTOR. IT SHALL BE THE CONTRACTOR'S RESPONSIBILITY TO PRESERVE SUCH FIELD LOCATIONS DURING THE CONSTRUCTION PROCESS. WATER VALVES, VALVE BOXES OR FIRE HYDRANTS DAMAGED DURING CONSTRUCTION SHALL BE REPAIRED BY CONTRACTOR AT HIS OWN EXPENSE. VALVE BOXES AND WATER METERS WITHIN THE PROJECT LIMITS SHALL BE ADJUSTED TO MATCH FIELD GRADES BY THE CONTRACTOR.
- IF TRAFFIC WILL BE IMPACTED BY CONSTRUCTION, A TRAFFIC CONTROL PLAN MUST BE SUBMITTED AND APPROVED BY THE CITY TRAFFIC ENGINEER, MIKE ARMOUR AT traffic@wichita.gov. BEFORE CONSTRUCTION CAN BEGIN. THE CONTRACTOR SHALL BE RESPONSIBLE FOR ALL TRAFFIC CONTROL MEASURES TO FACILITATE CONSTRUCTION. ALL CONSTRUCTION ZONE MARKINGS AND SIGNAGE SHALL CONFORM TO THE LATEST VERSION OF THE MANUAL ON UNIFORM TRAFFIC CONTROL DEVICES (MUTCD) AS PUBLISHED BY THE US DEPT. OF TRANSPORTATION, FEDERAL HIGHWAY ADMINISTRATION. ALL COSTS ASSOCIATED WITH CONSTRUCTION MARKINGS AND SIGNAGE SHALL BE THE CONTRACTOR'S RESPONSIBILITY.
- ALL AREAS DISTURBED DURING CONSTRUCTION THAT WILL NOT BE UNDER PROPOSED PAVEMENT SHALL BE SEEDED AND MULCHED. COST SHALL BE CONSIDERED SUBSIDIARY TO PROJECT SEEDING.
- CONTRACTOR SHALL LIMIT THE EXTENT OF TRENCH OPEN OVERNIGHT AND WEEKENDS TO LESS THAN 50 FEET.
- EXISTING UTILITIES AND THEIR LOCATION, AS SHOWN ON THE PLANS REPRESENT THE BEST INFORMATION OBTAINABLE FOR DESIGN. LOCATION INFORMATION HAS BEEN OBTAINED FROM THE VARIOUS COMPANIES AND IS EITHER FROM COMPANY UTILITY DRAWINGS OR COMPANY PROVIDED FIELD LOCATIONS. THE PLAN LOCATIONS SHOWN ARE NOT GUARANTEED. ADDITIONAL EXISTING UTILITIES MAY ALSO BE ENCOUNTERED.
- A PORTION OF EXCESS EXCAVATED MATERIAL SHALL BE MOUNDED AROUND MANHOLES WHICH EXTEND MORE THAN ONE (1) FOOT ABOVE THE EXISTING GROUND. SUCH MOUND SHALL BE CONSTRUCTED WITH NEW DEVELOPMENT A SIX (6) FOOT DIAMETER FLAT TOP WITH 4 TO 1 SIDE SLOPES DOWN TO THE ORIGINAL GROUND. THE ELEVATION OF THE FLAT TOP OF THE MOUND SHALL BE 0.4 FOOT BELOW THE TOP OF THE MANHOLE.
- CONTRACTOR SHALL PROVIDE POSITIVE DRAINAGE AWAY FROM ALL MANHOLE COVERS.
- ALL STUBS AND PLUGGED PIPES SHALL BE LOCATED WITH GREEN PLASTIC TAPE IN THE SAME MANNER AS RISERS.
- CONNECTING TO EXISTING MANHOLES:
PRIOR TO LAYING SEWER LINES USING EXISTING STUBS IN EXISTING MANHOLES, THE CONTRACTOR SHALL EXPOSE AND VERIFY THE ELEVATION, GRADE AND ALIGNMENT OF EXISTING STUBS AND NOTIFY THE ENGINEER OF ANY DEVIATION FROM THE PLANS. WHERE CONNECTION TO AN EXISTING MANHOLE THAT DOES NOT HAVE AN EXISTING STUB OR THE STUB IS UNUSABLE DUE TO ELEVATION GRADE OR ALIGNMENT, THE CONTRACTOR SHALL BORE CUT INTO EXISTING MANHOLE WALL TO MAKE CONNECTION USING APPROVED WATER STOP GASKET, AND RESHAPE THE EXISTING MANHOLE INVERT TO PROVIDE SMOOTH FLOW. THE COST TO CONNECTING TO EXISTING MANHOLES IS INCIDENTAL TO THE PROJECT.
- THE CONTRACTOR SHALL PREVENT ANY CONSTRUCTION DEBRIS FROM ENTERING THE EXISTING SANITARY SEWER DURING CONSTRUCTION.
- THE CONTRACTOR SHALL BE RESPONSIBLE FOR MAINTAINING CONTINUOUS FLOW OF SEWAGE THROUGH CONSTRUCTION. CONTRACTOR'S PROPOSED METHOD FOR MAINTAINING SEWAGE FLOW SHALL BE SUBMITTED AND APPROVED BY THE SEWER MAINTENANCE DIVISION (316-268-4073) PRIOR TO STARTING AND BY-PASSING OF SEWAGE FLOWS.
- ALL TRAFFIC CONTROL DEVICES IN THE WORK ZONE (INCLUDING MARKINGS AND SIGNS) AND THEIR INSTALLATION AND MAINTENANCE SHALL COMPLY WITH THE LATEST EDITION OF THE MANUAL ON UNIFORM TRAFFIC CONTROL DEVICES (MUTCD). ALL TRAFFIC CONTROL DEVICES IN THE TRAVELED WAY OR CLEAR ZONE SHALL BE CRASHWORTHY (NCHRP REPORT 350 OR MASH COMPLIANT).
<http://safety.fhwa.dot.gov/roadwaydept/policy/guide/road/hardware/wzd>
- ALL CONSTRUCTION EQUIPMENT, INCLUDING VEHICLES, MATERIALS, AND DEBRIS, SHALL BE STORED OUTSIDE OF THE CLEAR ZONE. WHERE THIS CANNOT BE ACHIEVED THE CONTRACTOR SHALL PLACE APPROPRIATE SIGNS, ABJECT IDENTIFIERS, AND/OR BARRICADES IN COMPLIANCE WITH MUTCD.
- EXCEPT WHEN REQUIRED FOR SAFETY, TRAFFIC CONTROL SHALL NOT BLOCK ANY LANES OR SIDEWALKS WHEN WORK IS NOT BEING PERFORMED.
- FOLLOW THE LINK BELOW FOR DETAILS ON SPECIFIC CITY OF WICHITA STANDARD DETAILS:
<http://www.wichita.gov/PWU/Pages/Regulations.aspx>
- DEVELOPER FOR THIS PROJECT IS:
PERFECTION SIGNATURE PROPERTIES, LLC
11828 W. CENTRAL, SUITE 124
WICHITA, KANSAS, 67212
SCOTT LEHNER/JASON RONK
316-729-1900

**SANITARY SEWER
TO SERVE**

AUBURN LAKES ADDITION

LATERAL 72, COWSKIN INTERCEPTOR

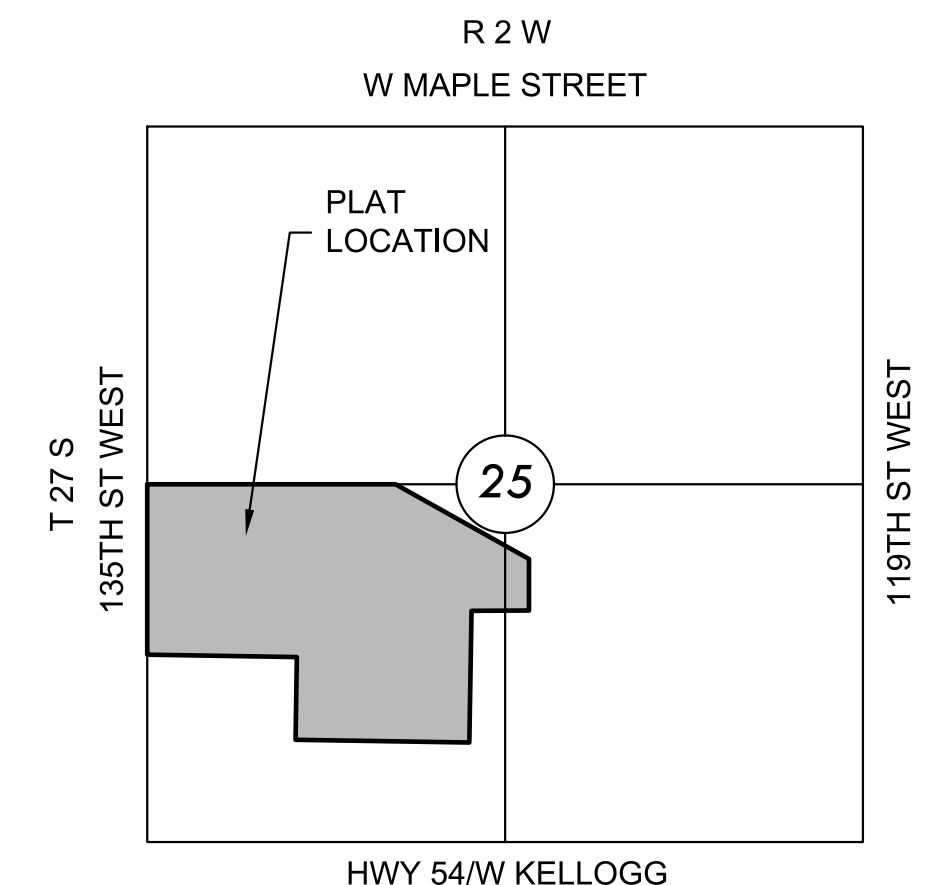
PROJECT NO. 468-2020-033942

THE CITY OF WICHITA, KANSAS
GARY JANZEN, P.E. - CITY ENGINEER

ORG CODE 47263521

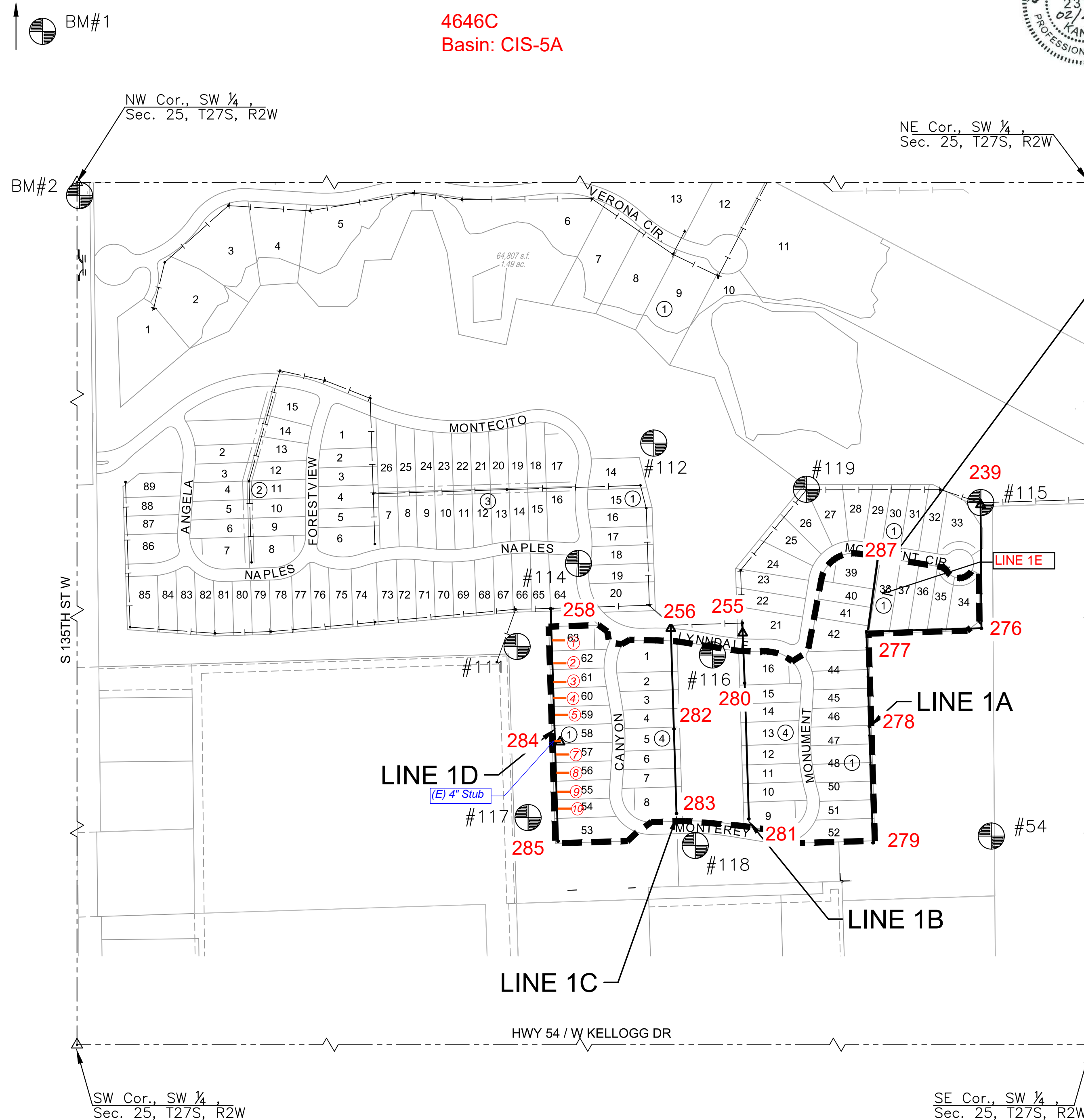
MUNIS NO. E1015

Apex Excavation - Contractor
K. Kerns - City of Wichita, Field Project Engineer
L. Schaller - MKEC, Inspector
As-built
Stub & Risers
Release Date (for connection purposes only): 8/27/2021
pdf: apr 12/7/2021



VICINITY MAP

No Scale



4646C
Basin: CIS-5A

BENEFIT DISTRICT BOUNDARY

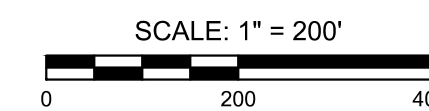
INDEX TO DRAWINGS

SHEET NO.	DESCRIPTION
01	TITLE SHEET
02-04	DETAILS
05-06	LINE 1A
07	LINE 1B
08	LINE 1C
09	LINE 1D
10	BUBBLE MAP
11-15	BMP SHEETS
16-17	FINAL PLAT

09a - LINE 1E

BENCHMARKS

BM#1	SQUARE CUT ON EAST NOSE OF CENTER ISLAND, 50 FEET WEST OF 135TH STREET WEST AND ONEWOOD STREET INTERSECTION. ELEV.=1350.35 NAVD88
BM#2	SQUARE CUT ON NORTHEAST CORNER CURB INLET, EAST SIDE OF 135TH STREET WEST, 33 FEET SOUTH OF NW 1/4, SEC. 25, T27S, R2W OF THE 6TH P.M. ELEV.=1346.29 NAVD88



SURVEY CONTROL (PHASE 3)

DATUM:
THE HORIZONTAL DATUM IS BASED ON THE KANSAS COORDINATE SYSTEM OF 1983(2011), SOUTH ZONE. COORDINATES SHOWN HAVE BEEN MODIFIED TO THE GROUND USING A COMBINED ADJUSTMENT FACTOR OF 1.0001200144. STATE PLANE COORDINATES CAN BE CALCULATED BY MULTIPLYING THE SHOWN VALUES BY 0.99988.

ALL ELEVATIONS SHOWN ARE BASED ON THE NAVD 88 VERTICAL DATUM.

BENCHMARK/CONTROL POINTS (GND):	NORTHING	EASTING	ELEVATION	DESCRIPTION
BM/CP#	1678264.862	1604718.113	1319.680	5/8" BY 24 REBAR WITH 2" ALUM MKEC CP CAP
111	1678753.722	1603495.058	1350.000	5/8" BY 36" REBAR WITH 2" ALUM MKEC CP CAP
112	1679278.218	1603847.480	1331.140	+CUT/SQ CUT @ SW CORNER CONCRETE WEIR.
114	1678968.221	1603652.801	1328.525	SQUARE CUT TO IN-FRONT OF FH @ NE CORNER LOT 64 BLK 1
115	1679125.545	1604690.460	1319.945	VCUT N EDGE OF CONC AROUND MHSS NE CORNER OF LOT 33 BLK 1
116	1678731.390	1603998.647	1324.190	+CUT E. EDGE OF RCB HDWL BETWEEN PONDS ON SOUTH SIDE OF LYNNDALE
117	1678312.330	1603523.303	1350.400	3/4" BY 36" REBAR WITH 2" ALUM MKEC CP CAP
118	1678240.632	1603954.475	1336.660	3/4" BY 36" REBAR WITH 2" ALUM MKEC CP CAP
119	1679159.064	1604241.231	1328.025	VCUT N EDGE OF CONC AROUND MHSS NW CORNER LOT 27 BLK1

NOTE:
ALL CONTROL POINTS SHOWN HAVE ELEVATIONS ESTABLISHED USING STANDARD SURVEYING PROCEDURES AND CAN BE USED AS TEMPORARY BENCHMARKS. WHEN USING A CONTROL POINT AS A TEMPORARY BENCHMARK, IT IS RECOMMENDED THAT CROSS-CHECKS BE MADE TO OTHER CONTROL POINTS OR BENCHMARKS TO CONFIRM ELEVATIONS PRIOR TO USE.



SANITARY SEWER PLANS FOR
AUBURN LAKES ADDITION
PHASE 3

©2021
MKEC Engineering
All Rights Reserved
www.mkec.com
These drawings and their contents, including, but not limited to, all concepts, designs, & ideas are the exclusive property of MKEC Engineering (MKEC), and may not be used or reproduced in any way without the express consent of MKEC.

TITLE SHEET

PROJECT NO. 468-2020-033942

DATE FEB. 2021

SCALE 1" = 200'

DESIGNED DRAWN CHECKED

DLF CRM SLF

NO. REVISION DATE

SHEET NO.

01 OF 17

©2021
MKEC Engineering
All Rights Reserved
www.mkec.com
These drawings and their contents, including, but not limited to, all concepts, designs, & ideas are the exclusive property of MKEC Engineering (MKEC), and may not be used or reproduced in any way without the express consent of MKEC.

LINE 1A

PROJECT NO. 468-2020-033942

DATE FEB. 2021

SCALE 1"=40'

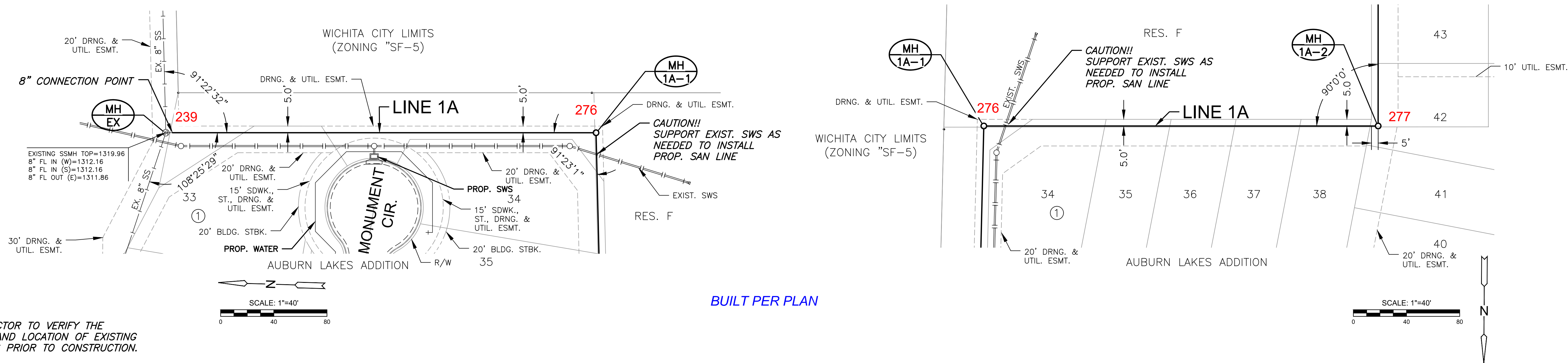
DESIGNED DFL DRAWN CRM CHECKED SLF

NO. REVISION DATE

SHEET NO.

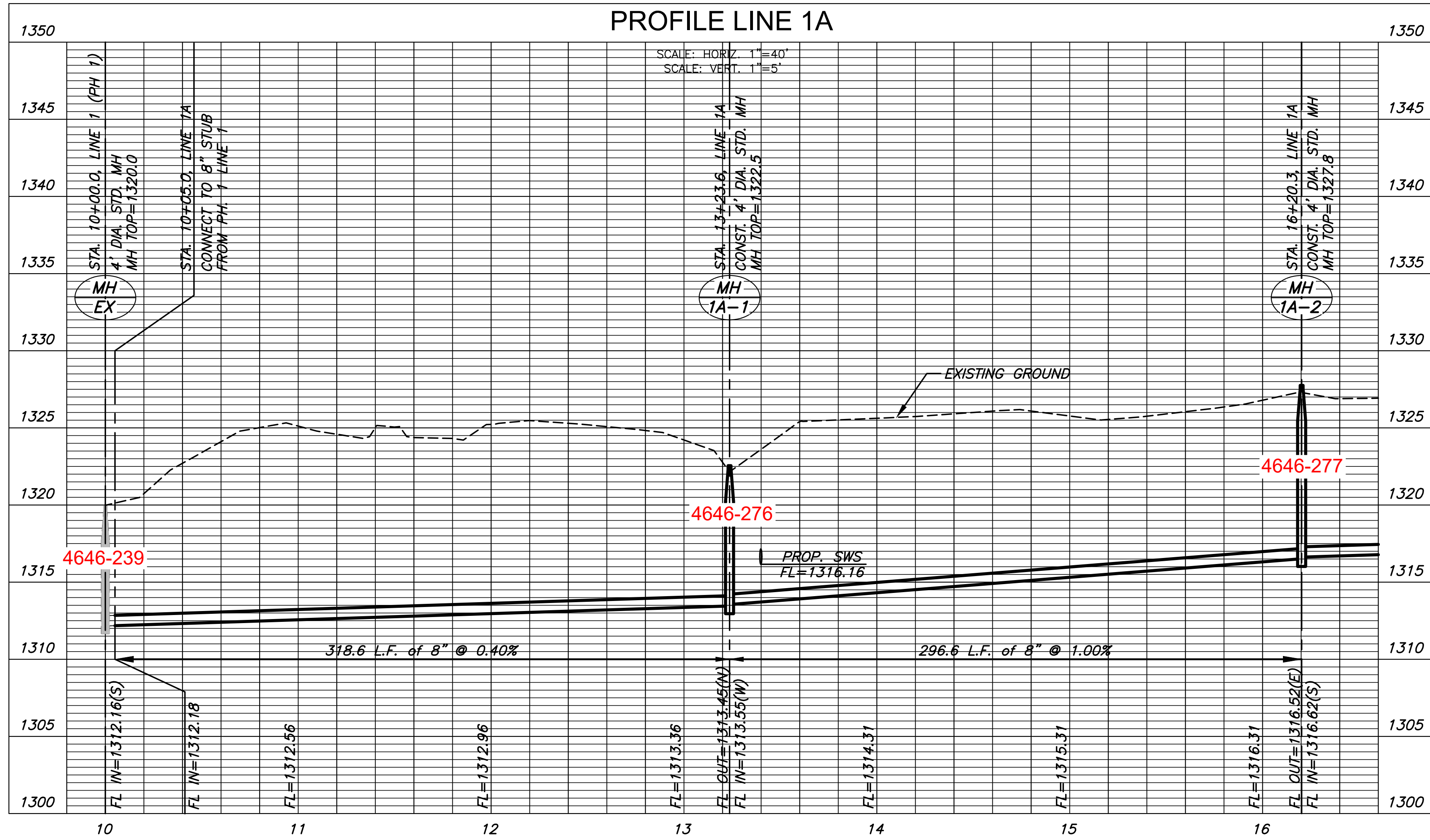
PLOTTED: Thursday, February 25, 2021 @ 04:08PM

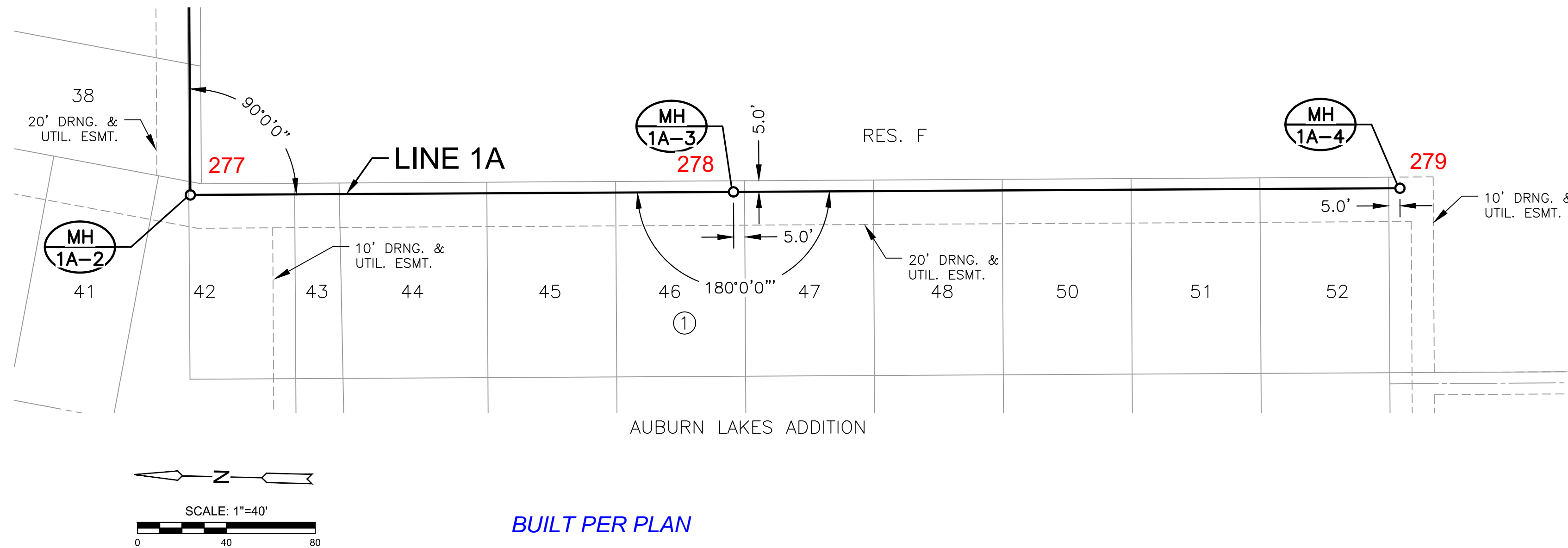
J:\PROJECTS\2016\1601010221_PERFECTION_AUBURN_LAKES_16221 CAD\SHOTS\05 CIVIL SAN\PHASE 3\16221-05-2201.DWG



BUILT PER PLAN

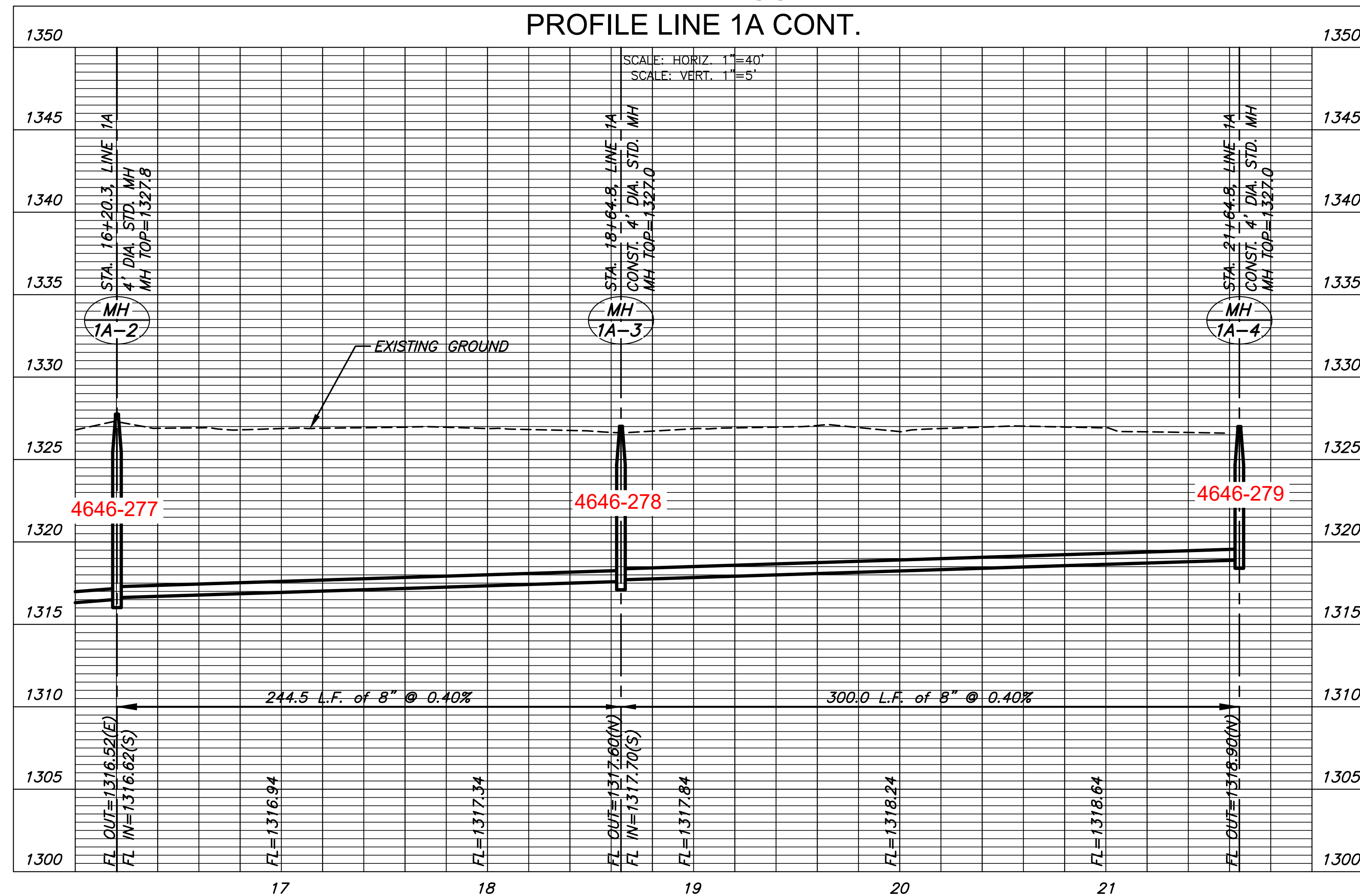
**PLAN LINE 1A
PROFILE LINE 1A**





NOTE:
CONTRACTOR TO VERIFY THE
DEPTH AND LOCATION OF EXISTING
UTILITIES PRIOR TO CONSTRUCTION.

PLAN LINE 1A CONT.
PROFILE LINE 1A CONT.



©2021
MKEC Engineering
All Rights Reserved
www.mkec.com
These drawings and their contents, including, but not limited to, all concepts, designs, & ideas are the exclusive property of MKEC Engineering (MKEC), and may not be used or reproduced in any way without the express consent of MKEC.

LINE 1A CONT.

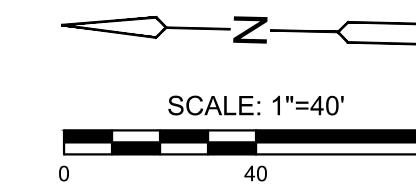
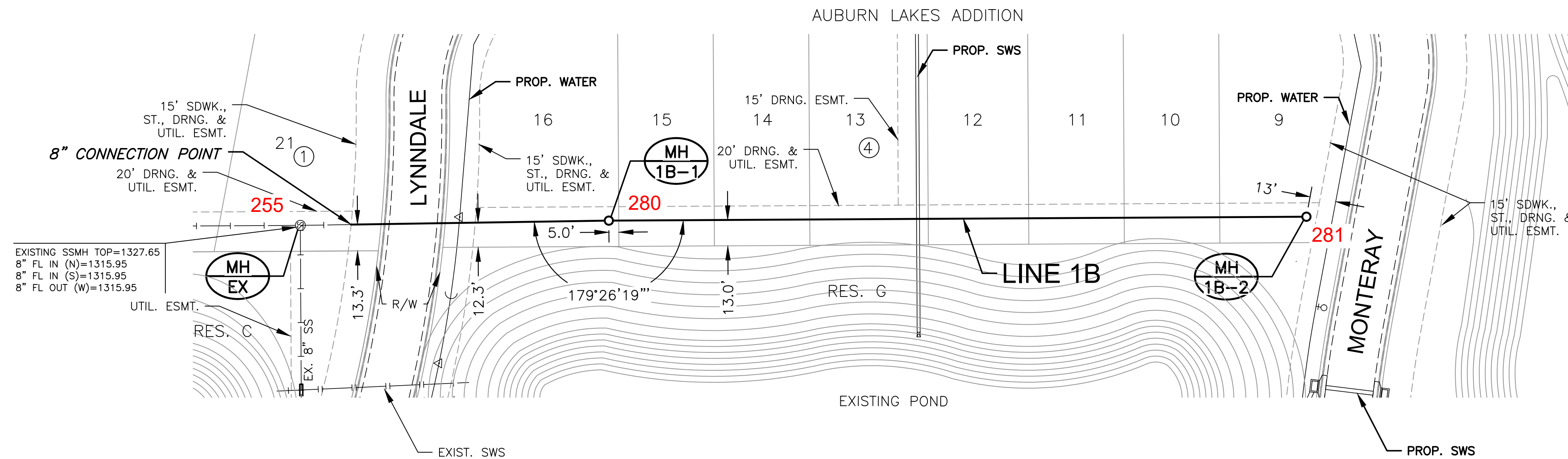
PROJECT NO.	468-2020-033942
DATE	FEB. 2021
SCALE	1"=40'
DESIGNED	DFL
DRAWN	CRM
CHECKED	SLF

NO.	REVISION	DATE

SHEET NO.

PLOTTED: Thursday, February 25, 2021 @ 01:35PM

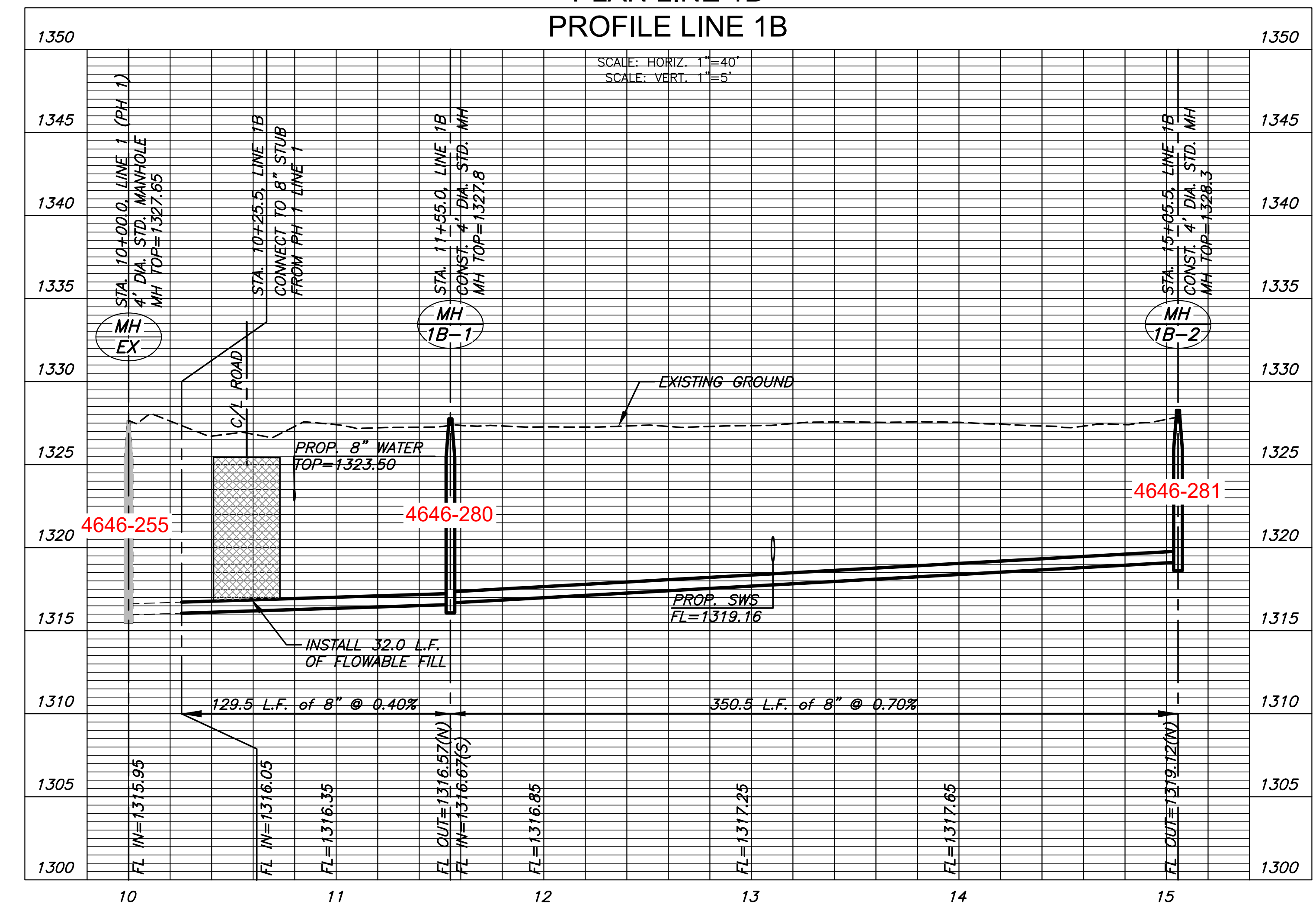
J:\PROJECTS\2016\1601010221_PERFECTION_AUBURN_LAKES_16221_CAD\SHOTS\05_CIVIL\SANPHASE_3\16221-05-2203.DWG



BUILT PER PLAN

NOTE:
CONTRACTOR TO VERIFY THE DEPTH AND LOCATION OF EXISTING UTILITIES PRIOR TO CONSTRUCTION.

PLAN LINE 1B
PROFILE LINE 1B



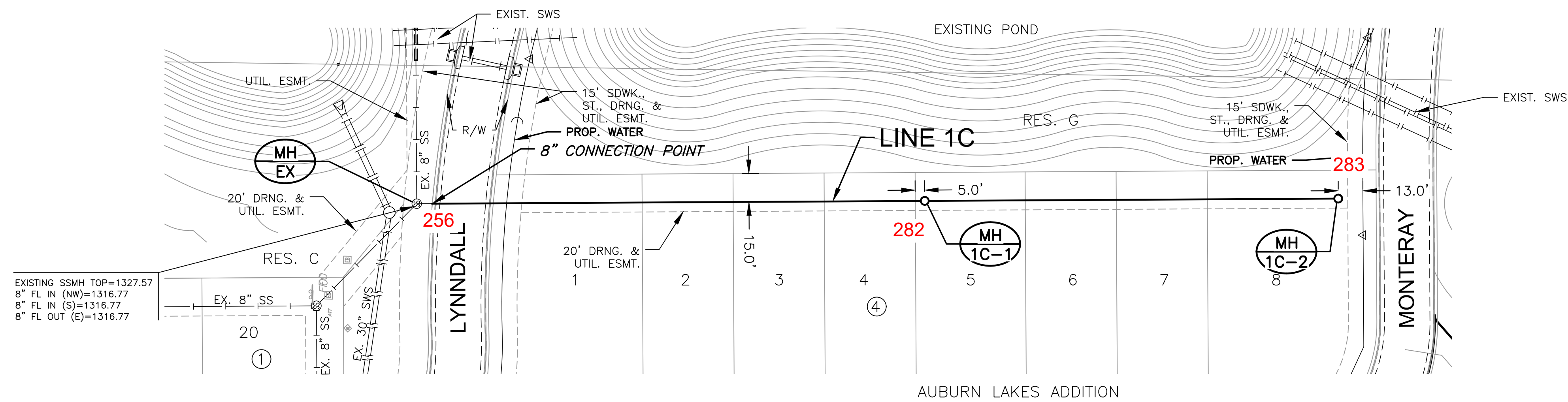
SANITARY SEWER PLANS FOR
AUBURN LAKES ADDITION
PHASE 3

©2021 MKEC Engineering All Rights Reserved www.mkec.com
These drawings and their contents, including, but not limited to, all concepts, designs, & ideas are the exclusive property of MKEC Engineering (MKEC), and may not be used or reproduced in any way without the express consent of MKEC.

LINE 1B		
PROJECT NO.	468-2020-033942	
DATE	FEB. 2021	
SCALE	1"=40'	
DESIGNED	DFL	
DRAWN	CRM	
CHECKED	SLF	
NO.	REVISION	DATE
SHEET NO. 07 OF 17		

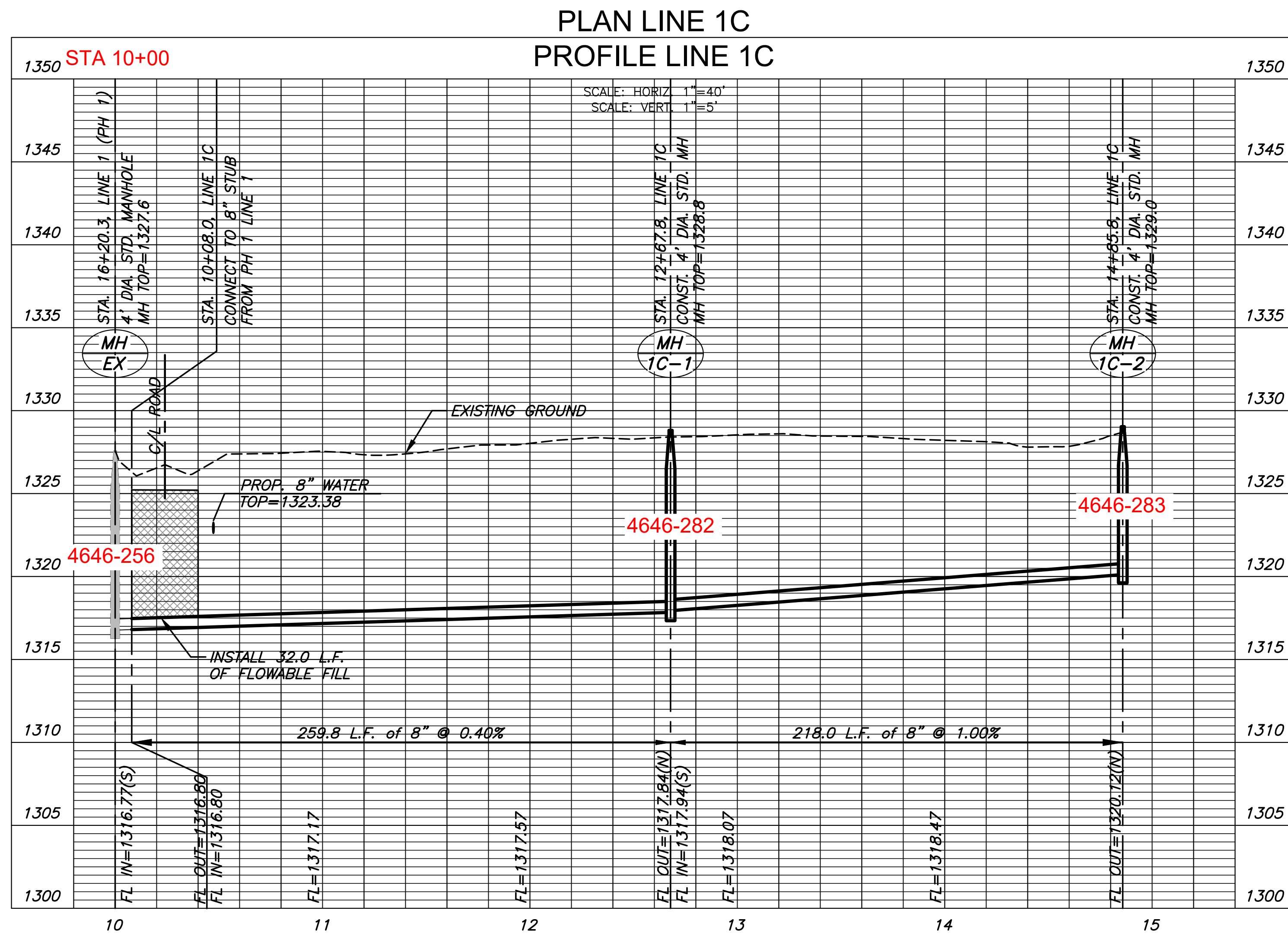
PLOTTED: Thursday, February 25, 2021 @ 01:35PM

J:\PROJECTS\2018\1601010221_PERFECTION_AUBURN_LAKES_16221_CAD\SHOTS\05_CIVIL\SANPHASE 3\16221-05-2204.DWG



BUILT PER PLAN

NOTE:
CONTRACTOR TO VERIFY THE
DEPTH AND LOCATION OF EXISTING
UTILITIES PRIOR TO CONSTRUCTION.



©2021
MKEC Engineering
All Rights Reserved
www.mkec.com
These drawings and their contents, including, but not limited to, all concepts, designs, & ideas are the exclusive property of MKEC Engineering (MKEC), and may not be used or reproduced in any way without the express consent of MKEC.

LINE 1C		
PROJECT NO.	468-2020-033942	
DATE	FEB. 2021	
SCALE	1"=40'	
DESIGNED	DFL	
DRAWN	CRM	
CHECKED	SLF	
NO.	REVISION	DATE
SHEET NO. 08 OF 17		

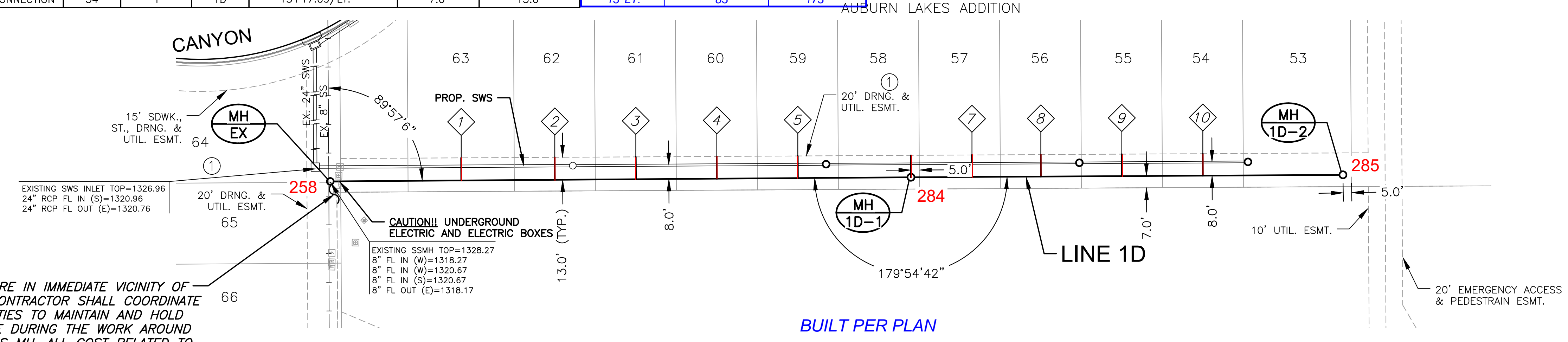
©2021 MKEC Engineering All Rights Reserved
 These drawings and their contents, including, but not limited to, all concepts, designs, & ideas are the exclusive property of MKEC Engineering (MKEC), and may not be used or reproduced in any way without the express consent of MKEC.

LINE 1D

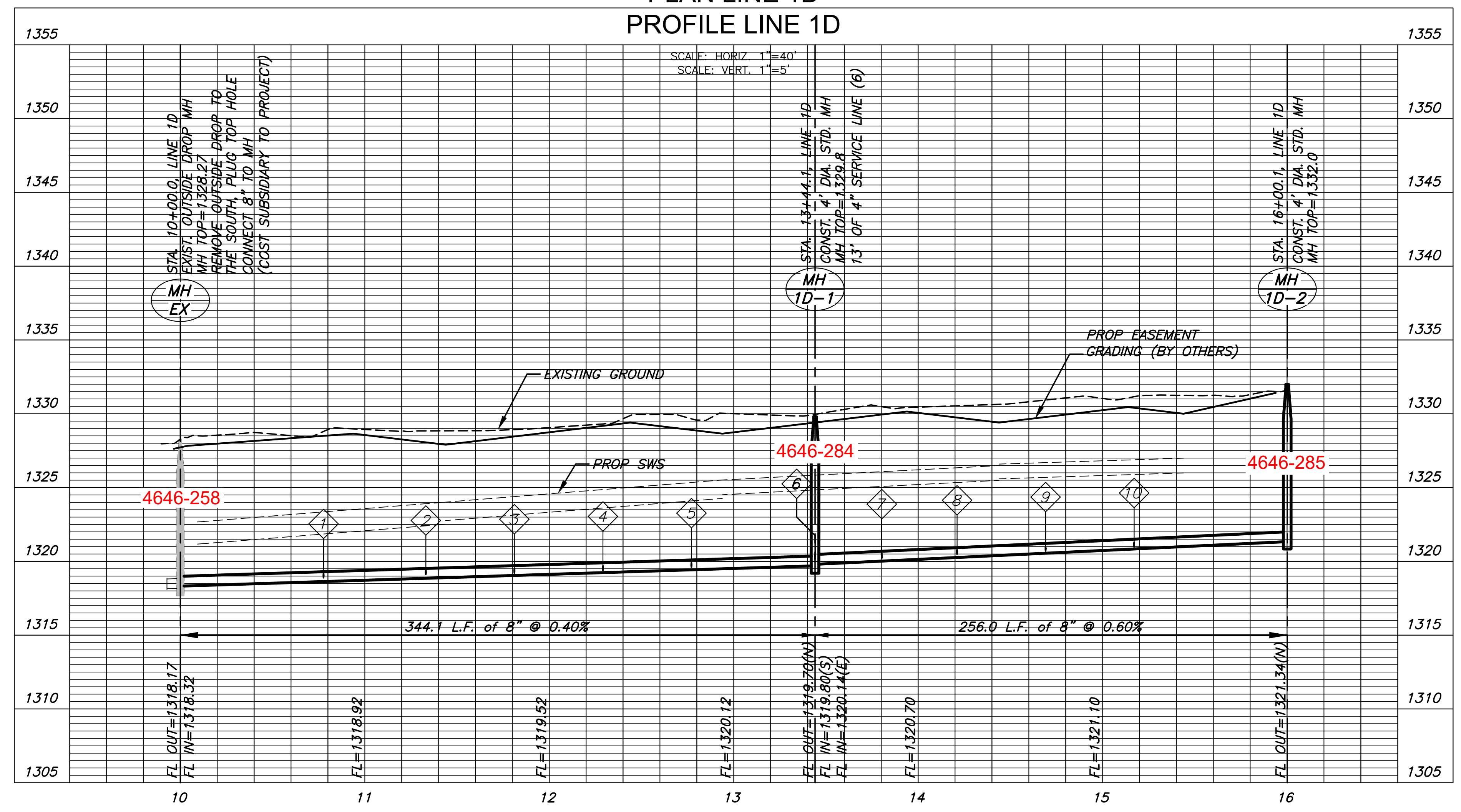
PROJECT NO.	468-2020-033942
DATE	FEB. 2021
SCALE	1"=40'
DESIGNED	DFL
DRAWN	CRM
CHECKED	SLF

NO.	REVISION	DATE
-----	----------	------

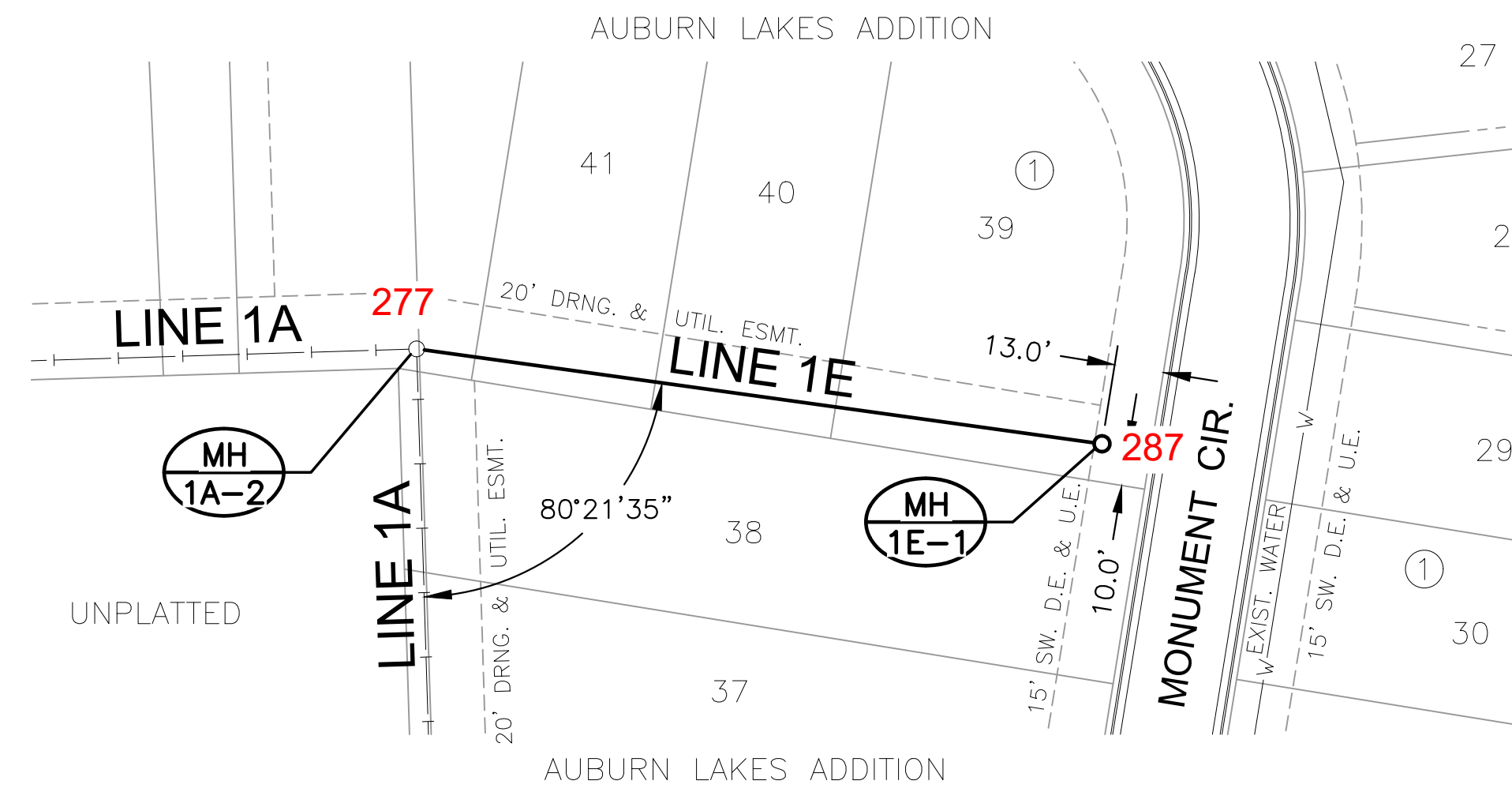
NO.	TYPE	LOCATION			STATION	FOR INFORMATION ONLY		DISTANCE FROM MAIN TO RISER	DISTANCE FROM	
		LOT NO.	BLOCK NO.	LINE NO.		APPROXIMATE LENGTH	VERTICAL (FT)		HORIZONTAL (FT)	UPSTREAM MH
1	TEE SERVICE CONNECTION	63	1	1D	10+77.62/LT.	7.0'	13.0'	13' LT.	267'	77.6'
2	TEE SERVICE CONNECTION	62	1	1D	11+33.08/LT.	7.0'	13.0'	13' LT.	211'	133'
3	TEE SERVICE CONNECTION	61	1	1D	11+81.11/LT.	7.0'	13.0'	13' LT.	163'	181'
4	TEE SERVICE CONNECTION	60	1	1D	12+29.11/LT.	7.0'	13.0'	13' LT.	115'	229'
5	TEE SERVICE CONNECTION	59	1	1D	12+77.08/LT.	7.0'	13.0'	13' LT.	67'	277'
6	6" MH CONNECTION	58	1	1D	13+44.10/LT.	7.0'	13.0'	13' LT.	@ MH	@ MH
7	TEE SERVICE CONNECTION	57	1	1D	12+80.31/LT.	7.0'	13.0'	13' LT.	220'	36'
8	TEE SERVICE CONNECTION	56	1	1D	14+21.09/LT.	7.0'	13.0'	13' LT.	179'	77'
9	TEE SERVICE CONNECTION	55	1	1D	14+69.09/LT.	7.0'	13.0'	13' LT.	131'	125'
10	TEE SERVICE CONNECTION	54	1	1D	15+17.09/LT.	7.0'	13.0'	13' LT.	83'	173'



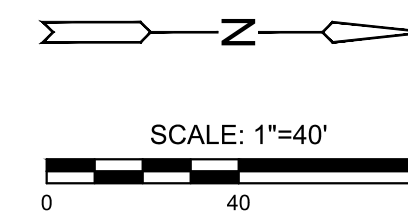
PLAN LINE 1D
 PROFILE LINE 1D



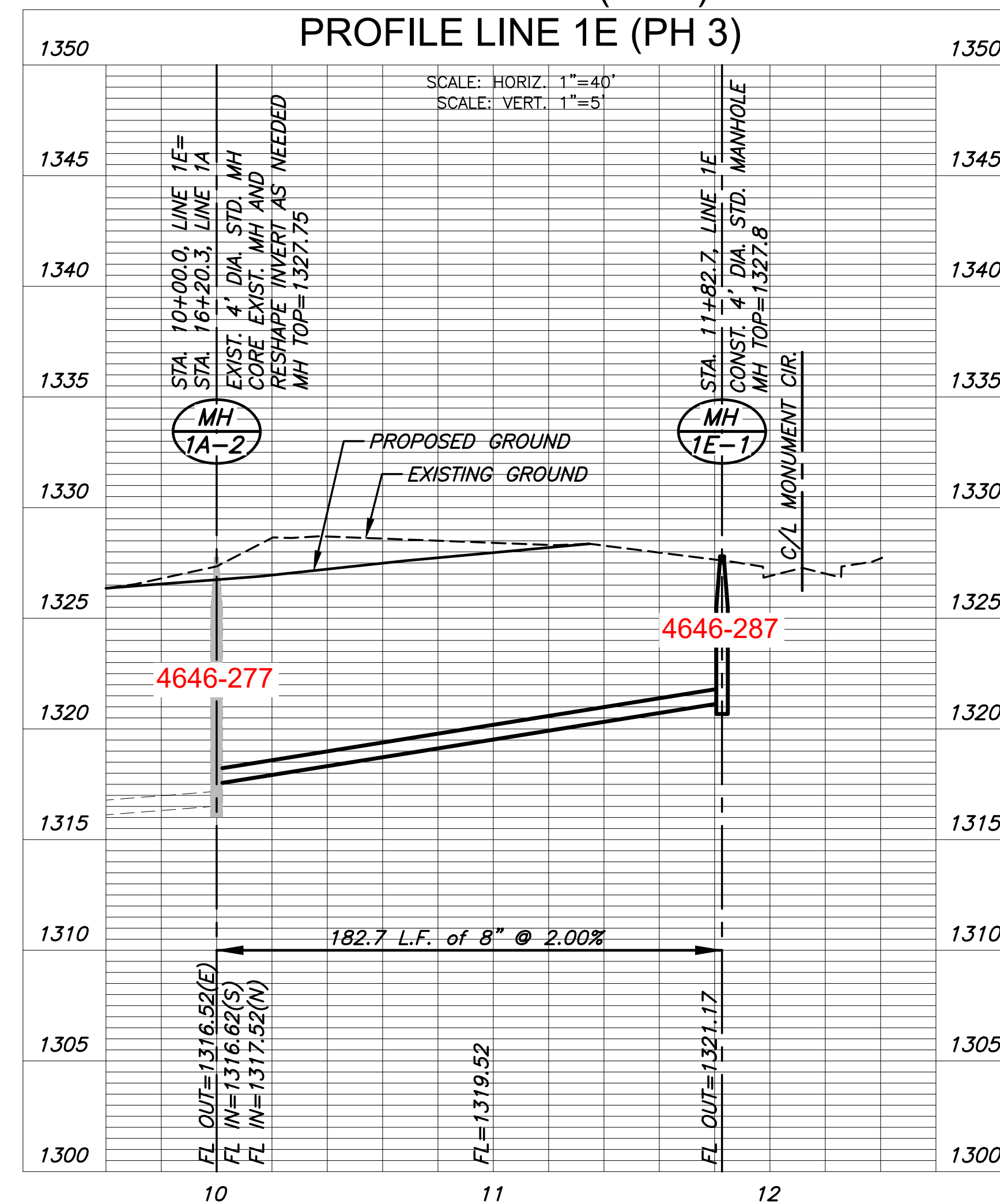
PLOTTED: Thursday, February 25, 2021 @ 01:36PM
 J:\PROJECTS\2016\1601010221_PERFECTION_AUBURN_LAKES_16221_CAD\SHOTS\05_CIVIL\SAN\PHASE 3\16221-05-2205.DWG



NOTE:
CONTRACTOR TO VERIFY THE DEPTH AND LOCATION OF EXISTING UTILITIES PRIOR TO CONSTRUCTION.



PLAN LINE 1E (PH 3)
PROFILE LINE 1E (PH 3)

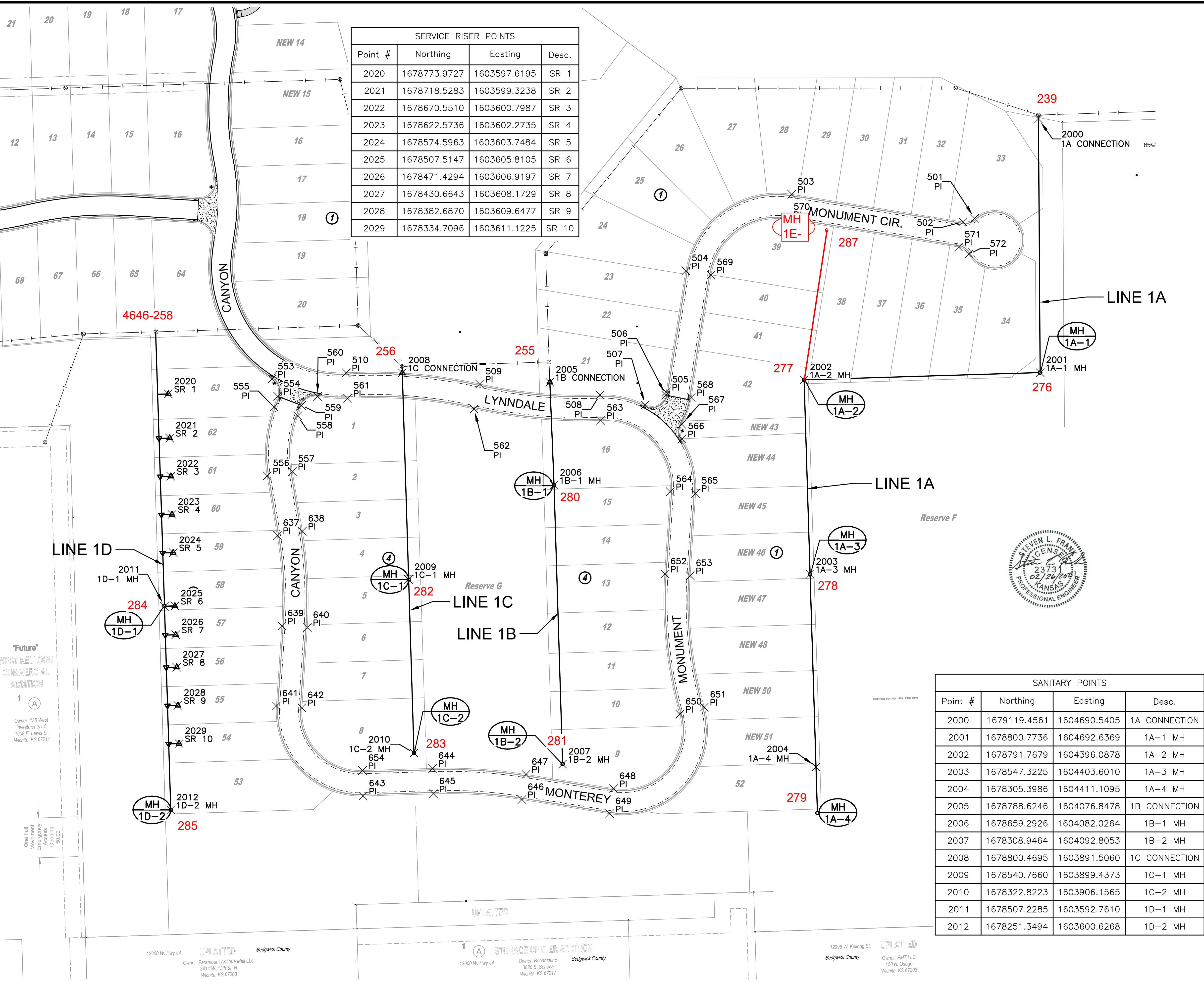


SANITARY SEWER PLANS FOR
AUBURN LAKES ADDITION
PHASE 3

©2021
MKEC Engineering
All Rights Reserved
www.mkec.com
These drawings and their contents, including, but not limited to, all concepts, designs, & ideas are the exclusive property of MKEC Engineering (MKEC), and may not be used or reproduced in any way without the express consent of MKEC.

LINE 1E		
PROJECT NO.	468-2020-033942	
DATE	OCT. 2021	
SCALE	1" = 40'	
DESIGNED	DRAWN	CHECKED
DFL	JWC	MAB
NO.	REVISION	DATE
1	ADDED SHEET	11/19/21
SHEET NO. 9a OF 17		

J:\PROJECTS\2018\1601010221_PERFECTION_AUBURN_LAKES_16221_CAD\SHOTS\05_CIVIL\SANPHASE_3\16221-05-2301.DWG
 PLOTTED: Thursday, February 25, 2021 @ 01:37PM
 Owner: 135 West Investments LLC, 1608 E. Lewis St, Wichita, KS 67211
 One Full Movement Emergency Access 50,000'



SERVICE RISER POINTS			
Point #	Northing	Easting	Desc.
2020	1678773.9727	1603597.6195	SR 1
2021	1678718.5283	1603599.3238	SR 2
2022	1678670.5510	1603600.7987	SR 3
2023	1678622.5736	1603602.2735	SR 4
2024	1678574.5963	1603603.7484	SR 5
2025	1678507.5147	1603605.8105	SR 6
2026	1678471.4294	1603606.9197	SR 7
2027	1678430.6643	1603608.1729	SR 8
2028	1678382.6870	1603609.6477	SR 9
2029	1678334.7096	1603611.1225	SR 10

SANITARY POINTS			
Point #	Northing	Easting	Desc.
2000	1679119.4561	1604690.5405	1A CONNECTION
2001	1678800.7736	1604692.6369	1A-1 MH
2002	1678791.7679	1604396.0878	1A-2 MH
2003	1678547.3225	1604403.6010	1A-3 MH
2004	1678305.3986	1604411.1095	1A-4 MH
2005	1678788.6246	1604076.8478	1B CONNECTION
2006	1678659.2926	1604082.0264	1B-1 MH
2007	1678308.9464	1604092.8053	1B-2 MH
2008	1678800.4695	1603891.5060	1C CONNECTION
2009	1678540.7660	1603899.4373	1C-1 MH
2010	1678322.8223	1603906.1565	1C-2 MH
2011	1678507.2285	1603592.7610	1D-1 MH
2012	1678251.3494	1603600.6268	1D-2 MH

PLAT POINTS			
Point #	Northing	Easting	Desc.
501	1678994.6201	1604610.4448	PI
502	1678990.0923	1604595.3810	PI
503	1679024.7864	1604380.6729	PI
504	1678928.7759	1604247.6542	PI
505	1678776.2382	1604223.0061	PI
506	1678772.5237	1604222.3081	PI
507	1678760.2420	1604196.5727	PI
508	1678772.6774	1604139.5935	PI
509	1678786.4431	1603988.6216	PI
510	1678800.5813	1603821.0789	PI
553	1678792.6342	1603727.6478	PI
554	1678770.8987	1603735.1199	PI
555	1678757.6638	1603730.1176	PI
556	1678671.1816	1603721.7401	PI
557	1678676.5394	1603753.2884	PI
558	1678746.3503	1603760.0510	PI
559	1678759.5855	1603765.0533	PI
560	1678770.9452	1603785.0337	PI
561	1678768.6258	1603822.7651	PI
562	1678755.2220	1603981.6042	PI
563	1678740.7021	1604140.8486	PI
564	1678651.2388	1604227.9611	PI
565	1678649.1329	1604259.8917	PI
566	1678717.6191	1604242.9004	PI
567	1678735.9183	1604242.5543	PI
568	1678769.5020	1604254.3326	PI
569	1678923.6713	1604279.2445	PI
570	1678993.1962	1604375.5684	PI
571	1678958.5021	1604590.2764	PI
572	1678949.4604	1604603.1475	PI
637	1678596.1922	1603734.4754	PI
638	1678601.5499	1603766.0237	PI
639	1678482.6427	1603740.2143	PI
640	1678480.4931	1603772.1420	PI
641	1678381.9403	1603733.4342	PI
642	1678379.7906	1603765.3619	PI
643	1678268.8697	1603842.4517	PI
644	1678303.5662	1603929.6800	PI
645	1678271.5813	1603930.6632	PI
646	1678264.3789	1604041.7657	PI
647	1678295.9692	1604046.8703	PI
648	1678278.1614	1604157.0756	PI
649	1678246.5711	1604151.9711	PI
650	1678371.6124	1604240.0129	PI
651	1678380.4334	1604270.7731	PI
652	1678547.8090	1604221.1397	PI
653	1678545.7026	1604253.0703	PI
654	1678300.8546	1603841.4685	PI



SANITARY SEWER PLANS FOR
AUBURN LAKES ADDITION
 PHASE 3

©2021 MKEC Engineering
 All Rights Reserved
 www.mkec.com
 These drawings and their contents, including, but not limited to, all concepts, designs, & ideas are the exclusive property of MKEC Engineering (MKEC), and may not be used or reproduced in any way without the express consent of MKEC.

BUBBLE MAP

PROJECT NO.	468-2020-033942
DATE	FEB. 2021
SCALE	1"=
DESIGNED	DFL
DRAWN	CRM
CHECKED	SLF