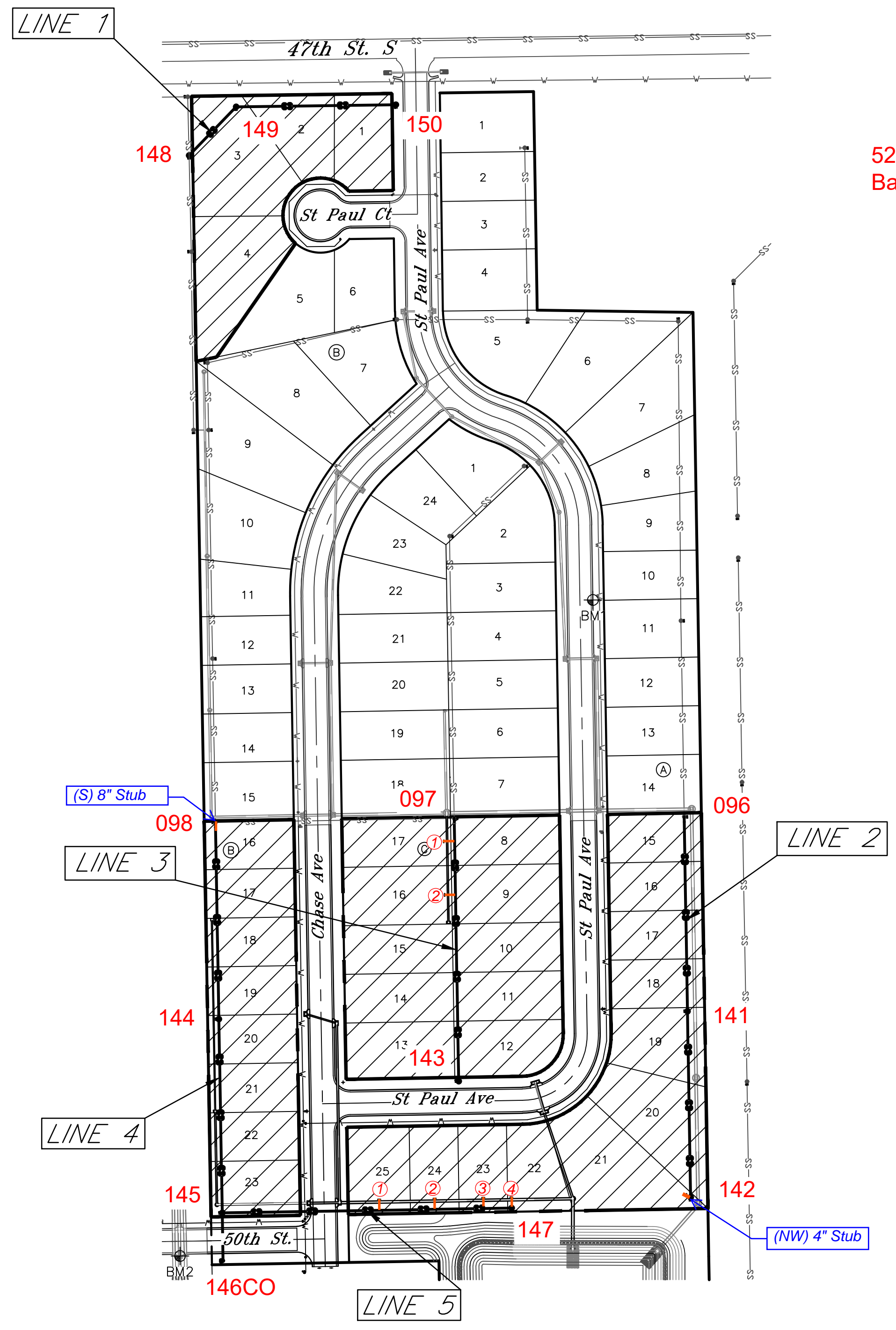
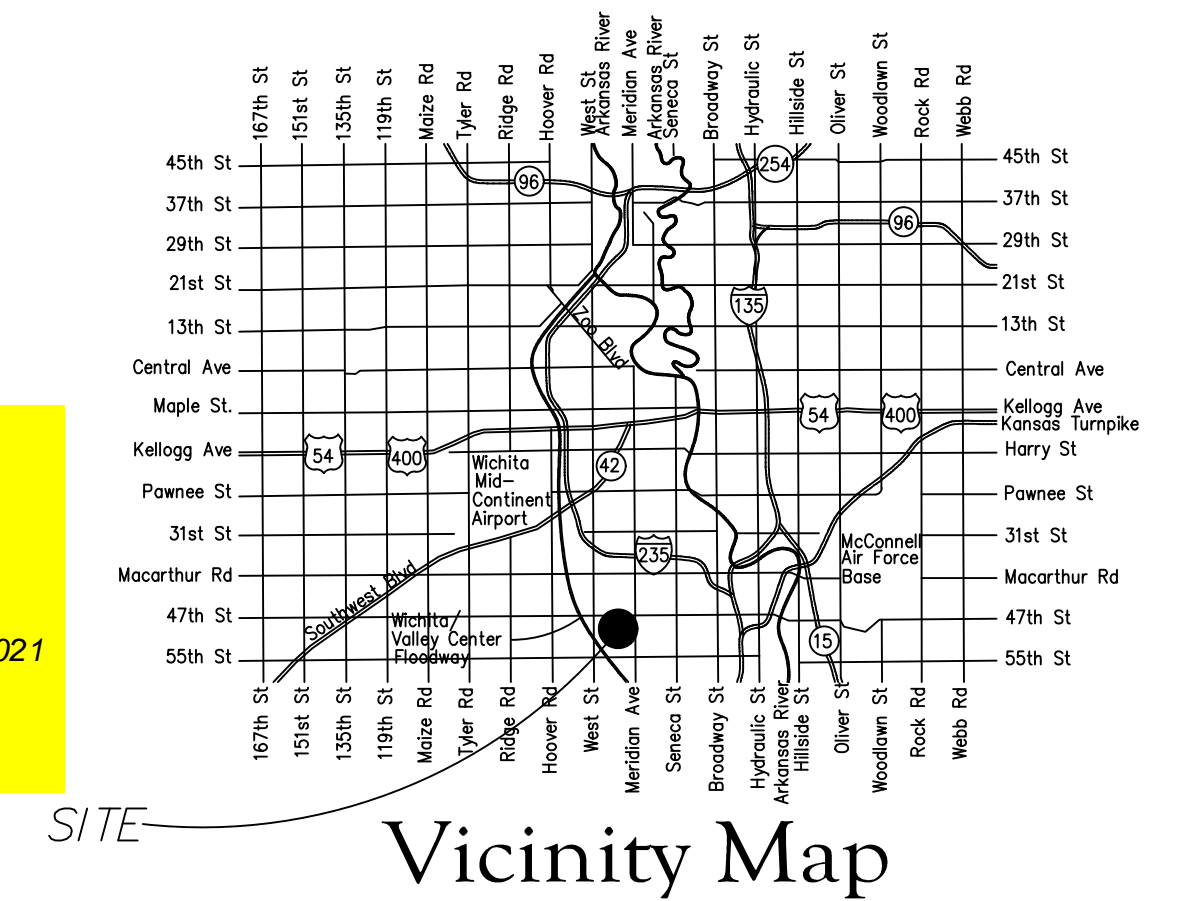


GENERAL NOTES:

- The Contractor shall comply with all applicable safety regulations. All construction shall be completed following current City Standard Specifications and Special Provisions.
- Contractor will be required to provide notice to utility companies a minimum of seventy-two (72) hours prior to any excavation, as follows:
 Kansas One-Call 687-2470
 The Contractor must notify the following in case of an emergency:
 AT&T 1-800-246-8464
 Black Hills Energy 1-800-694-8989
 City of Wichita Water & Sewer 1-316-219-8921
 City of Wichita Stormwater 1-316-268-4090
 City of Wichita Traffic 1-316-268-4034
 Cox Communications 1-888-249-3530
 Kansas Gas Service 1-888-482-4950
 Westar Energy 1-800-544-4857
- Utility service lines, poles, etc. are to be adjusted as necessary by others prior to construction unless the plans specifically call for their adjustment by the Contractor or unless the plans specifically identify a utility to be adjusted by its owner during construction. Existing utilities and their location, as shown on the plans, represent the best information obtainable for design. The Contractor will be required to work around existing utilities within the right-of-way which do not conflict with proposed construction.
- Rubble from the removal of miscellaneous structures and excess excavation which is to be wasted shall be disposed of on sites to be provided by the Contractor. These sites shall be approved by the Engineer as to suitability, appearance and site location. Locations, in the opinion of the Engineer, that will leave an unsightly appearance will not be approved. All disposal sites must be approved by the Kansas Department of Health and Environment. Material either stockpiled or disposed of in a flood plain will require a Kansas State Board of Agriculture permit. Any material dumped in waters of the United States or wetlands is subject to U.S. Corps of Engineers permitting regulations. Any material buried or stockpiled beyond approved construction limits will require additional archaeological investigations unless buried in a previously approved borrow location.
- Trees and shrubs in public right-of-way which are in direct conflict with proposed new construction shall be removed by the Contractor with the City Engineer's approval. Trees and shrubs which are not in direct conflict with proposed new construction shall be saved and protected from damage.
- The Contractor shall give all property owners and/or tenants of developed property abutting the construction of this project a minimum of ten (10) days notice prior to start of construction.
- The Contractor shall be responsible for preserving property irons. The Contractor will be required to re-establish any property irons which are damaged or destroyed by his construction operations. Such irons shall be re-established by a licensed land surveyor in accordance with state laws.
- The Engineering Division shall field locate water valves one time during construction when requested by the Contractor. It shall be the Contractor's responsibility to preserve such field locations during the construction process. Water valves, valve boxes or fire hydrants damaged during construction shall be repaired by Contractor at his own expense. Valve boxes and water meters within the project limits shall be adjusted to match final grades by the contractor.
- If traffic will be impacted by construction, a traffic control plan must be submitted and approved by the City Traffic Engineer, Mike Armour at traffic@wichita.gov before construction can begin. The Contractor shall be responsible for all traffic control measures to facilitate construction. All construction zone markings and signage shall conform to the latest version of the Manual on Uniform Traffic Control Devices (MUTCD) as published by the US Dept. of Transportation, Federal Highway Administration. All costs associated with construction markings and signage shall be the Contractors responsibility.
- All elevations shown are NAVD 88.
- All areas disturbed during construction that will not be under proposed pavement shall be restored to match existing conditions.
- All applicable fees (tap, equity, in lieu of & main benefit) must be paid before any connections can be made on this project. Quotes can be obtained on fees by calling 316-268-4555.
- All stubs and capped pipes shall be located with green plastic tape in the same manner as risers.
- Connecting to Existing Manholes: Prior to laying sewer lines using existing stubs in existing manholes, the Contractor shall expose and verify the elevation, grade and alignment of existing stubs and notify the Engineer of any deviation from the plans. Where the stub is unusable due to elevation grade or alignment, the Contractor shall remove the stub and plug the hole, and reshape the existing manhole invert to provide smooth flow. Where connecting to an existing manhole that does not have an existing stub, the Contractor shall core cut into existing manhole wall to make connection using approved water stop gasket, and reshape the existing manhole invert to provide smooth flow. The cost to connecting to existing manholes is incidental to the project.
- Contractor shall limit the extent of trench open overnight and weekends to less than 50 feet.
- Contractor shall provide positive drainage away from all manhole covers.
- The Contractor shall prevent any construction debris from entering the existing sanitary sewer during construction.
- The Contractor shall be responsible for maintaining continuous flow of sewage through construction. Contractors proposed method for maintaining sewage flow shall be submitted and approved by the Sewer Maintenance Division (316-268-4073) prior to starting and by-passing of sewage flows.
- Any over excavation from manhole and pipe removal shall be backfilled with AB-3 compacted to 90-95% ASTM D698.
- The Contractor shall protect from damage and support existing utilities through construction as approved by the utility owner and the Engineer at the contractors expense.
- Contractor shall be responsible for removal of existing trees as deemed necessary to complete the project.

Lateral 570, SWI SANITARY SEWER Fox Run Addition CITY OF WICHITA, KANSAS Gary Janzen, P.E. City Engineer Project Number: 468-2020-029856 OCA: 810128

Apex - Contractor
 G. Baalman - City of Wichita, Field Project Engineer
 E. Flores - City of Wichita, Inspector
 As-built
 Stubs & Risers
 Release Date (for connection purposes only): 11/18/2021
 Completion Date:
 pdf: apr 12/9/2021



5241A
 Basin: SWI - 03

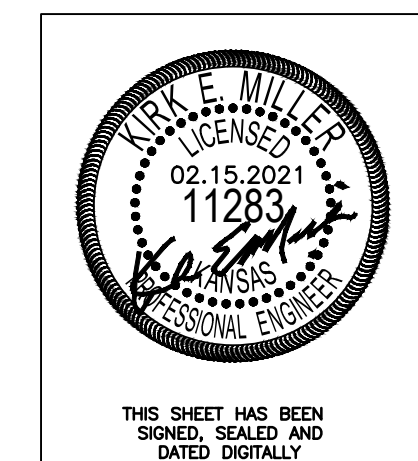
Sheet Index

- Cover Sheet
- Control Map
- 2.1-2.2 Std. Manhole Details
- 2.3 Vertical Riser Ass'y Detail
- 2.4 Cleanout Riser Ass'y Detail
- 3.0 Plan & Profile Line 1
- 3.1-3.2 Plan & Profile Line 2
- 3.3 Plan & Profile Line 3
- 3.4-3.5 Plan & Profile Line 4
- 3.6 Plan & Profile Line 5
- 4.0 Erosion Control Plan
- 4.1-4.5 Erosion Control Details
- 5.0 Plat

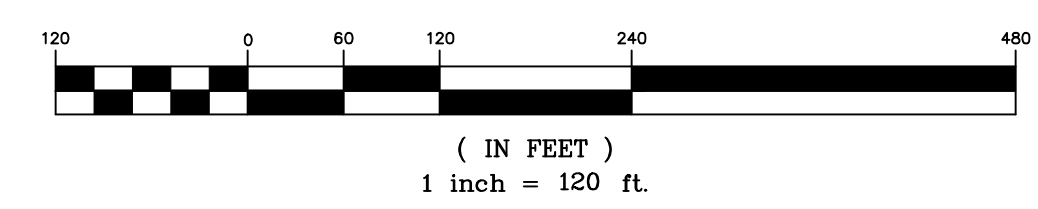
Benchmarks

BM1:
 Chiseled "+" on East Curb of St. Paul Ave., Approx. 14.5 feet West of the SW Corner of Lot 10, Block A
 Elev. = 1277.49 (NAVD-88)

BM2:
 Chiseled "□" on Rim of Curb Inlet on South side of 50th St., Approx. 42.5 feet West & 11.5 feet North of the SW Corner of Fox Run Addition
 Elev. = 1275.55 (NAVD-88)



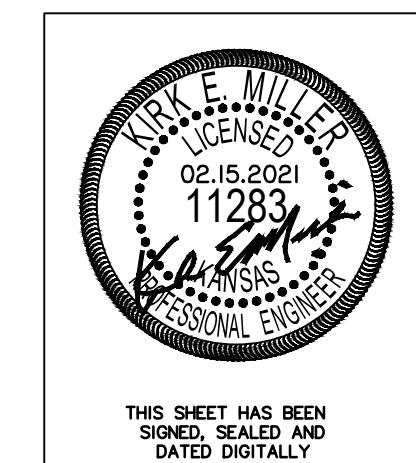
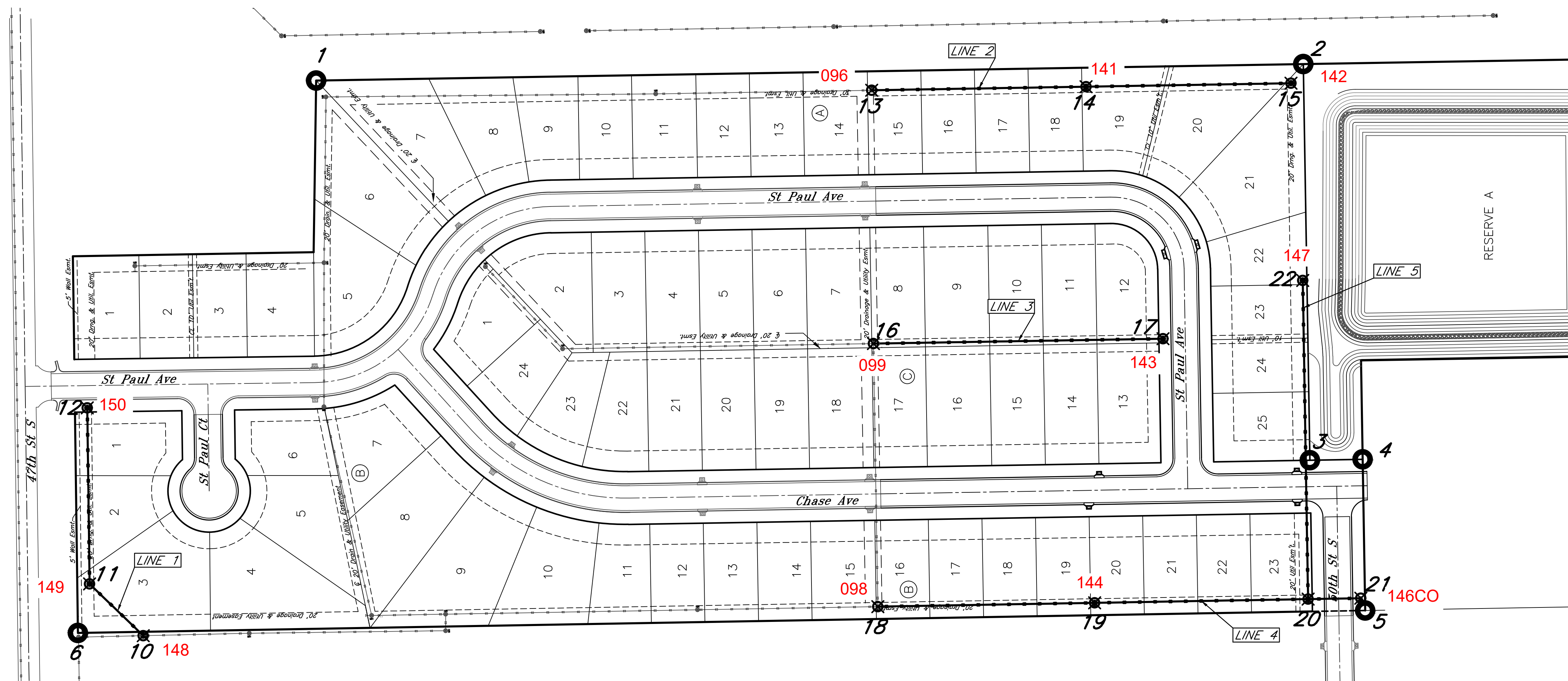
KEMILLER
 ENGINEERING PA
 117 E. Lewis, Wichita, KS 67202 (316)264-0242



February 2021

Developer: Superior Homes, LP
 1109 S Rock Road, Wichita, KS 67207-3317
 316-516-0139

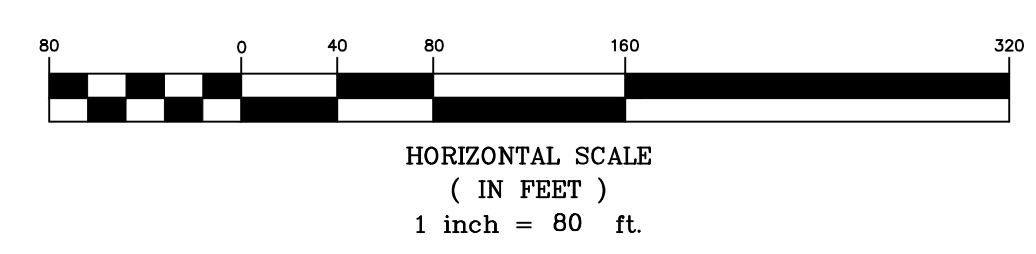
February 15, 2021



Point #	Northing	Easting	Desc.
1	1656640.78	1638176.43	5/8" Rebar
2	1655443.59	1638172.31	5/8" Rebar
3	1655435.54	1637716.05	5/8" Rebar
4	1655371.55	1637717.12	5/8" Rebar
5	1655368.48	1637533.84	5/8" Rebar
6	1656929.71	1637506.56	5/8" Rebar

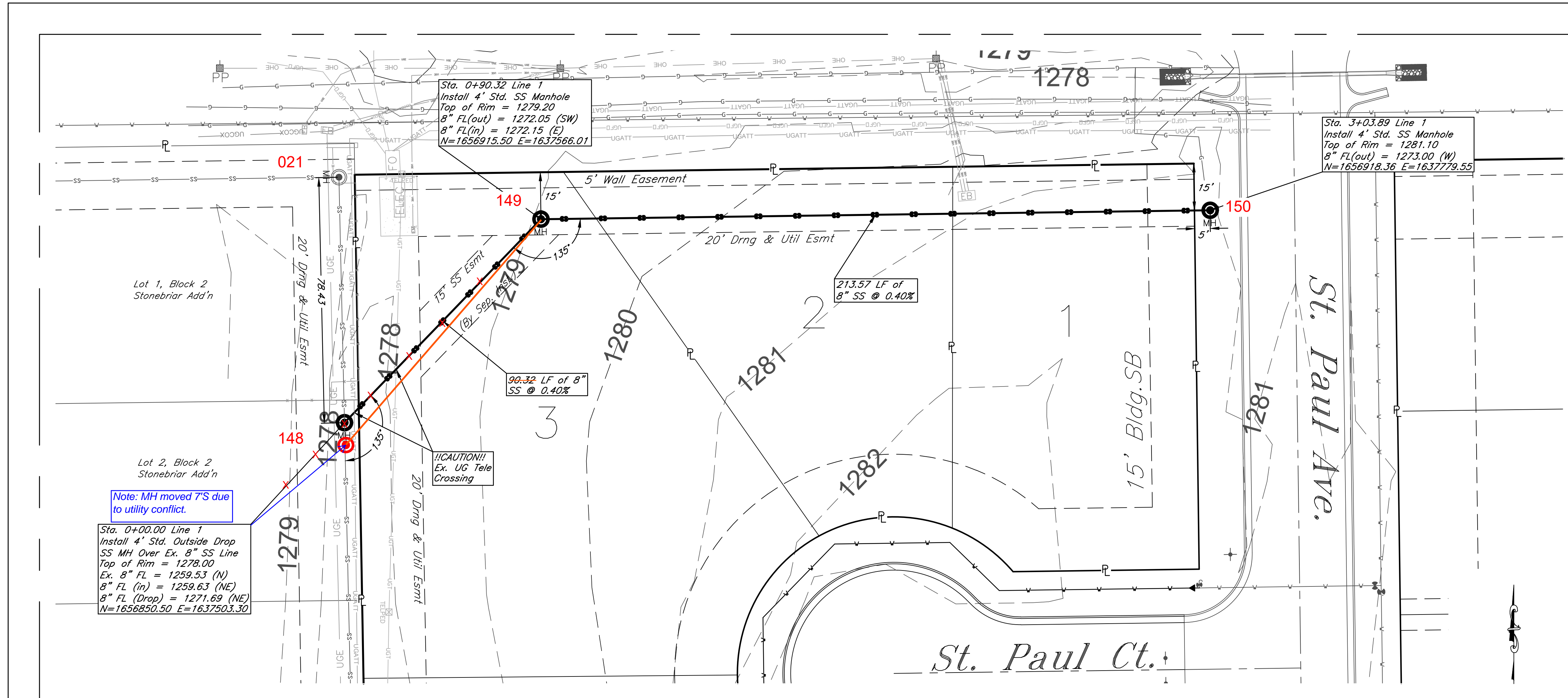
Point #	Northing	Easting	Desc.
10	1656850.50	1637503.30	Sta 0+00.00 Line 1
11	1656915.50	1637566.01	Sta 0+90.32 Line 1
12	1656918.36	1637779.55	Sta 3+03.89 Line 1
13	1656573.49	1637527.79	Sta 0+00.00 Line 2
14	1655707.05	1638169.06	Sta 2+60.00 Line 2
15	1655448.44	1638173.23	Sta 5+08.64 Line 2

Point #	Northing	Easting	Desc.
16	1655964.87	1637857.50	Sta 0+00.00 Line 3
17	1655613.70	1637863.38	Sta 3+51.22 Line 3
18	1655959.52	1637538.52	Sta 0+00.00 Line 4
19	1655696.56	1637543.11	Sta 2+63.00 Line 4
20	1655437.72	1637547.63	Sta 0+00.00 Line 5
21	1655373.73	1637548.71	Sta 5+85.88 Line 4
22	1655444.19	1637934.05	Sta 3+86.47 Line 5



Fox Run Addition (Phase II)
Control Map
Wichita, Kansas

 117 E. Lewis, Wichita, KS 67202 (316)284-0242	PROJECT NUMBER 468-2020-029856			SHEET 2.0
	KEM NO. 20061	FILE SS	DATE 09/2020	
	DESIGN ME	DRAWN ZS	REVISED 02/15/2021	



Sta. 0+90.32 Line 1
Install 4' Std. SS Manhole
Top of Rim = 1279.20
8" FL(out) = 1272.05 (SW)
8" FL(in) = 1272.15 (E)
N=1656915.50 E=1637566.01

Sta. 3+03.89 Line 1
Install 4' Std. SS Manhole
Top of Rim = 1281.10
8" FL(out) = 1273.00 (W)
N=1656918.36 E=1637779.55

Sta. 0+00.00 Line 1
Install 4' Std. Outside Drop
SS MH Over Ex. 8" SS Line
Top of Rim = 1278.00
Ex. 8" FL = 1259.53 (N)
8" FL (in) = 1259.63 (NE)
8" FL (Drop) = 1271.69 (NE)
N=1656850.50 E=1637503.30

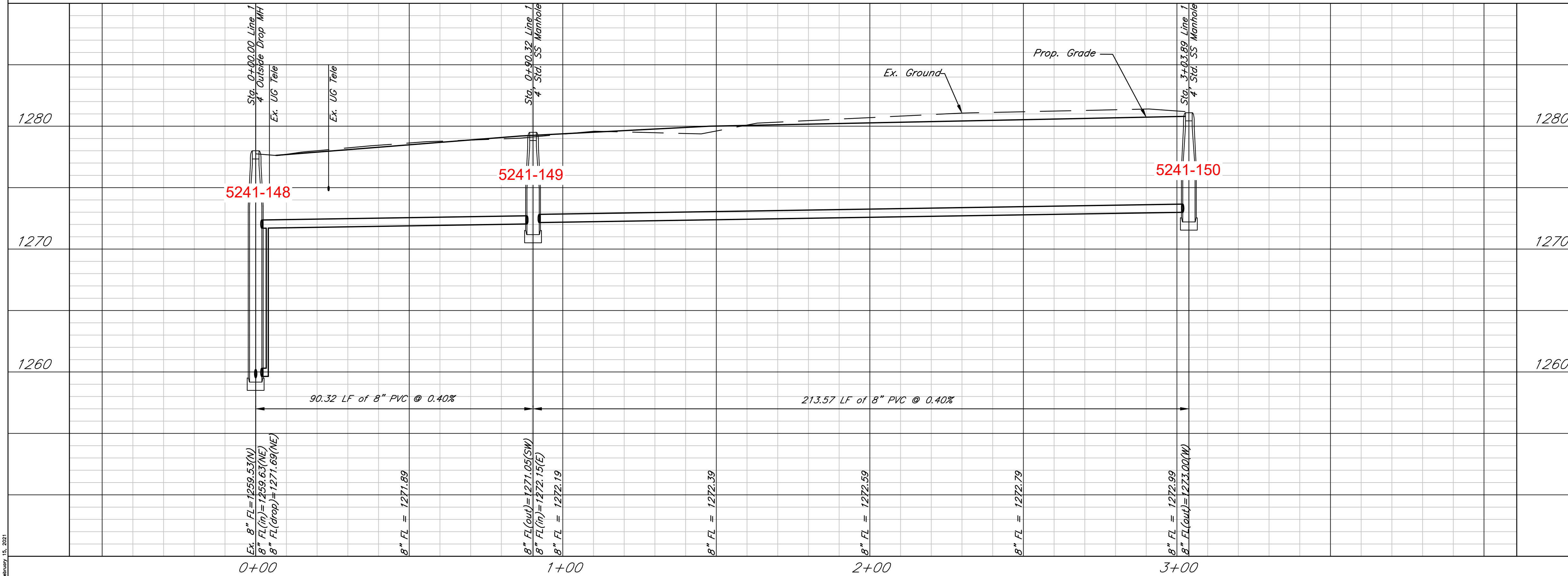
Note: MH moved 7'S due to utility conflict.

CAUTION!!!
Ex. UG Tele Crossing

213.57 LF of
8" SS @ 0.40%

90.32 LF of 8"
SS @ 0.40%

Line 1



Ex. 8" FL = 1259.53(N)
8" FL(in) = 1259.63(NE)
8" FL(Drop) = 1271.69(NE)

8" FL = 1271.89

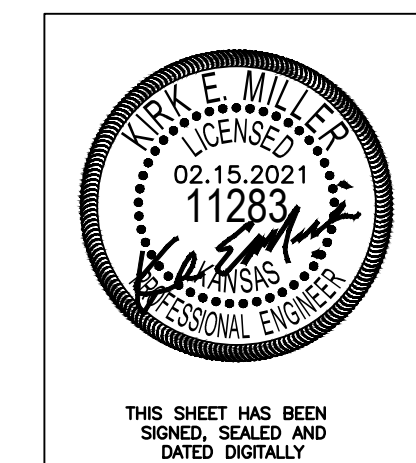
8" FL(out) = 1271.05(SW)
8" FL(in) = 1272.15(E)
8" FL = 1272.19

8" FL = 1272.39

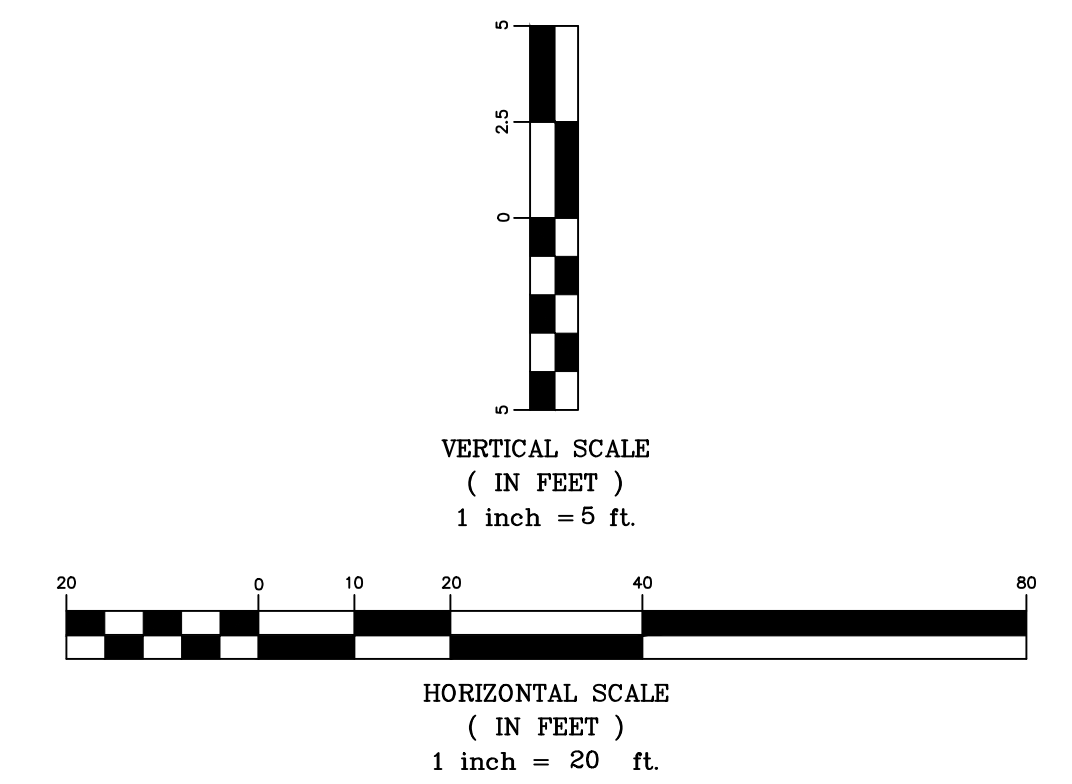
8" FL = 1272.59

8" FL = 1272.79

8" FL = 1272.99
8" FL(out) = 1273.00(W)



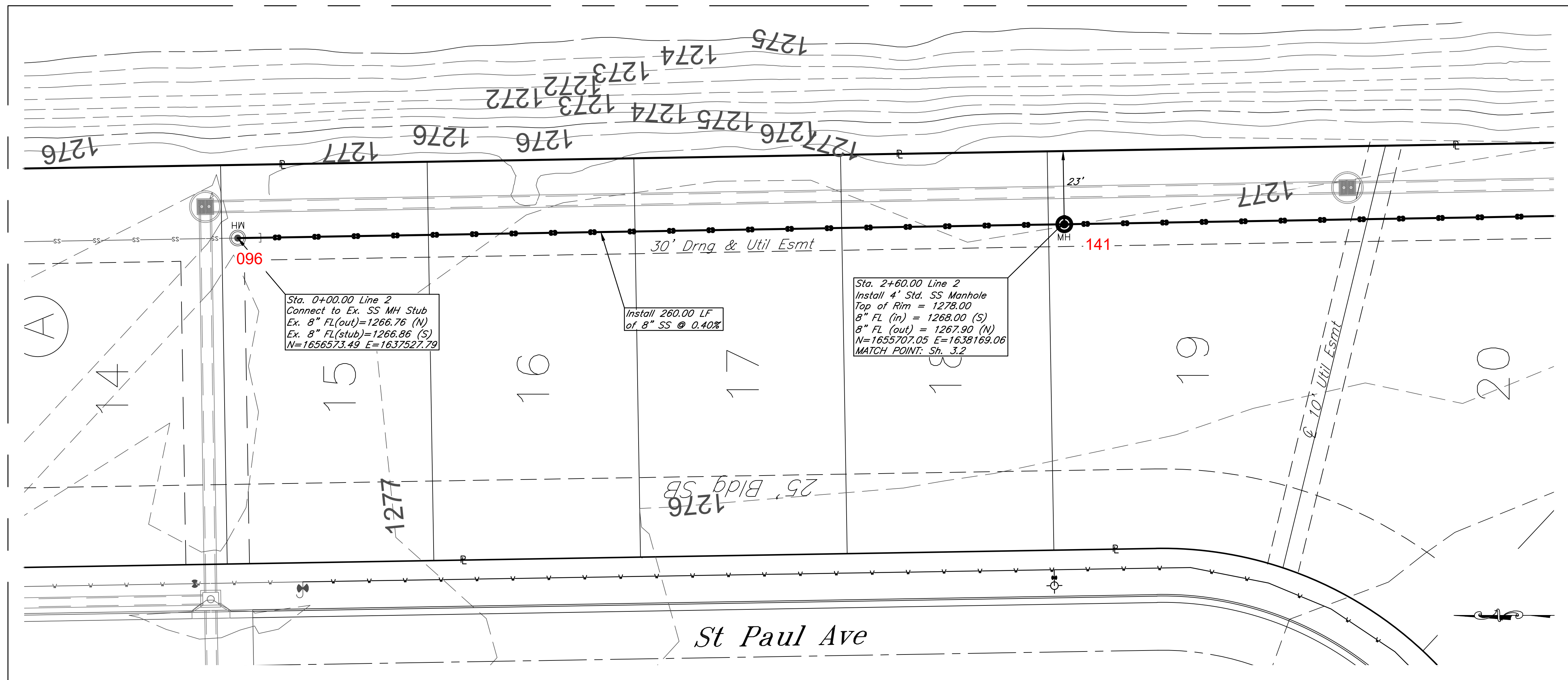
THIS SHEET HAS BEEN
SIGNED, SEALED AND
DATED DIGITALLY



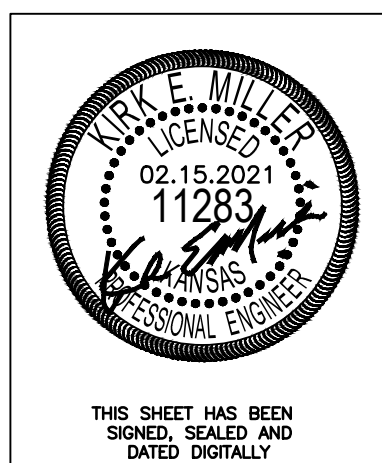
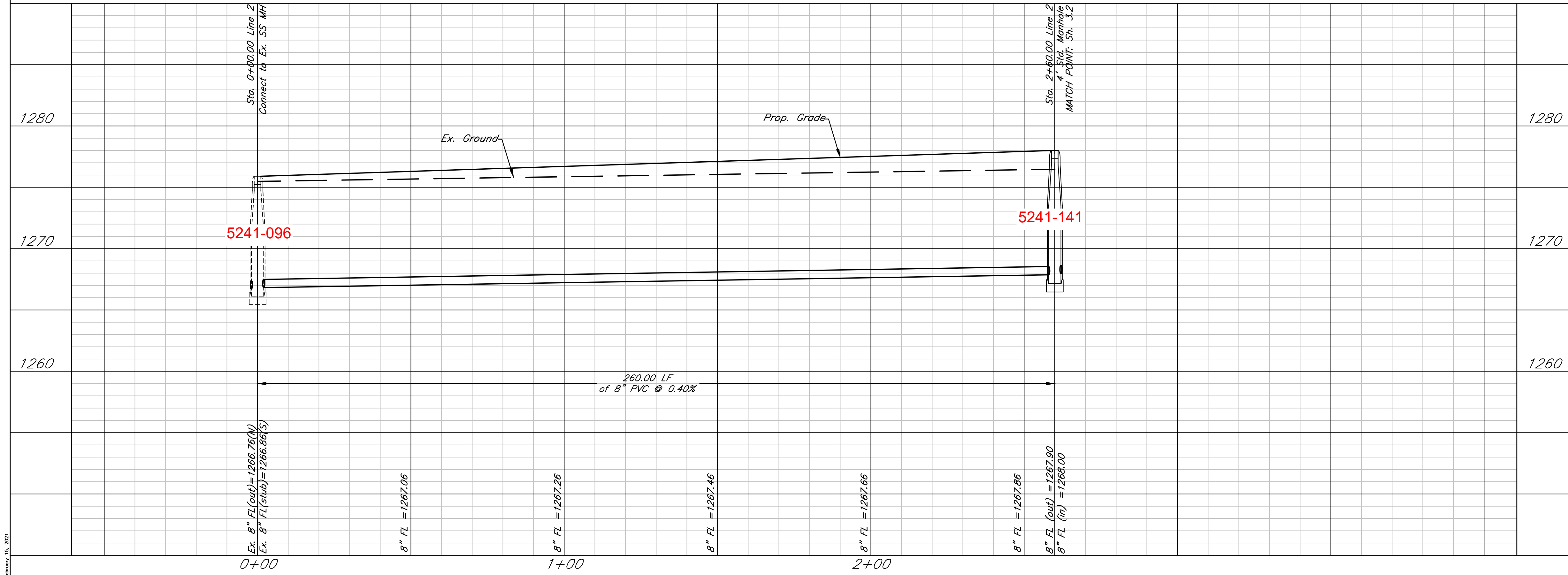
Fox Run Addition (Phase II)
SS Plan & Profile - Line 1
Wichita, Kansas

 117 E. Lewis, Wichita, KS 67202 (316)264-0242	PROJECT NUMBER 468-2020-029856		SHEET 3.0
	KEM NO. 20061	FILE	
DESIGN KM	DRAWN ZS	REVISED 02/15/2021	

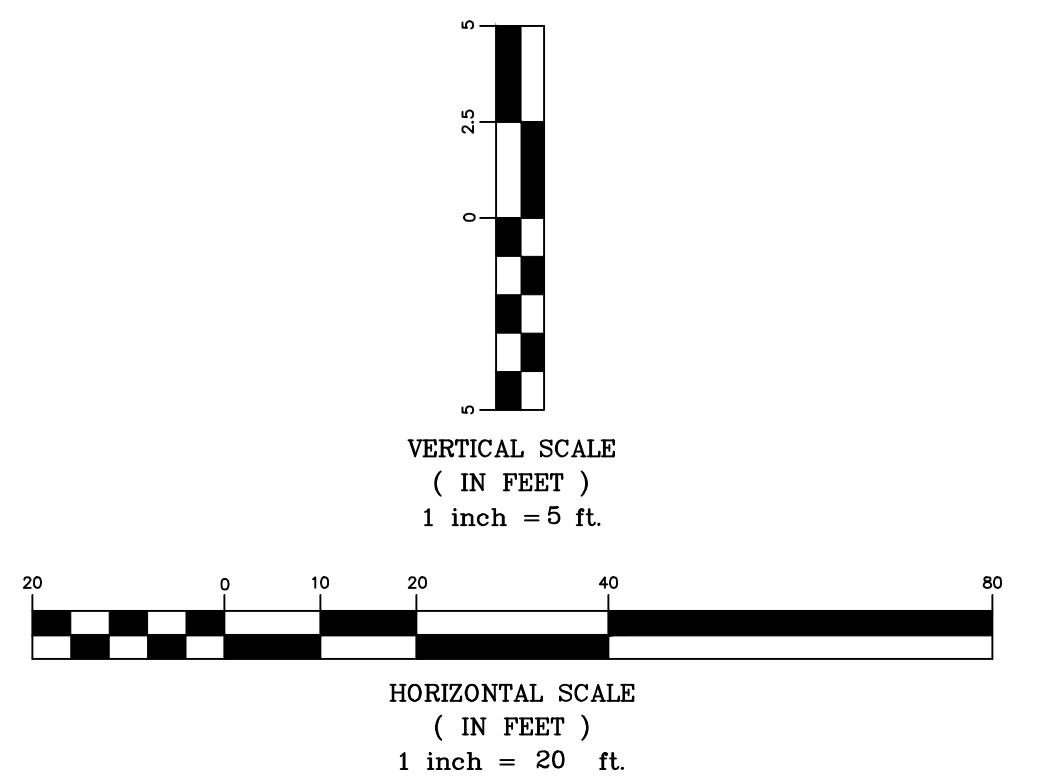
February 15, 2021



Line 2



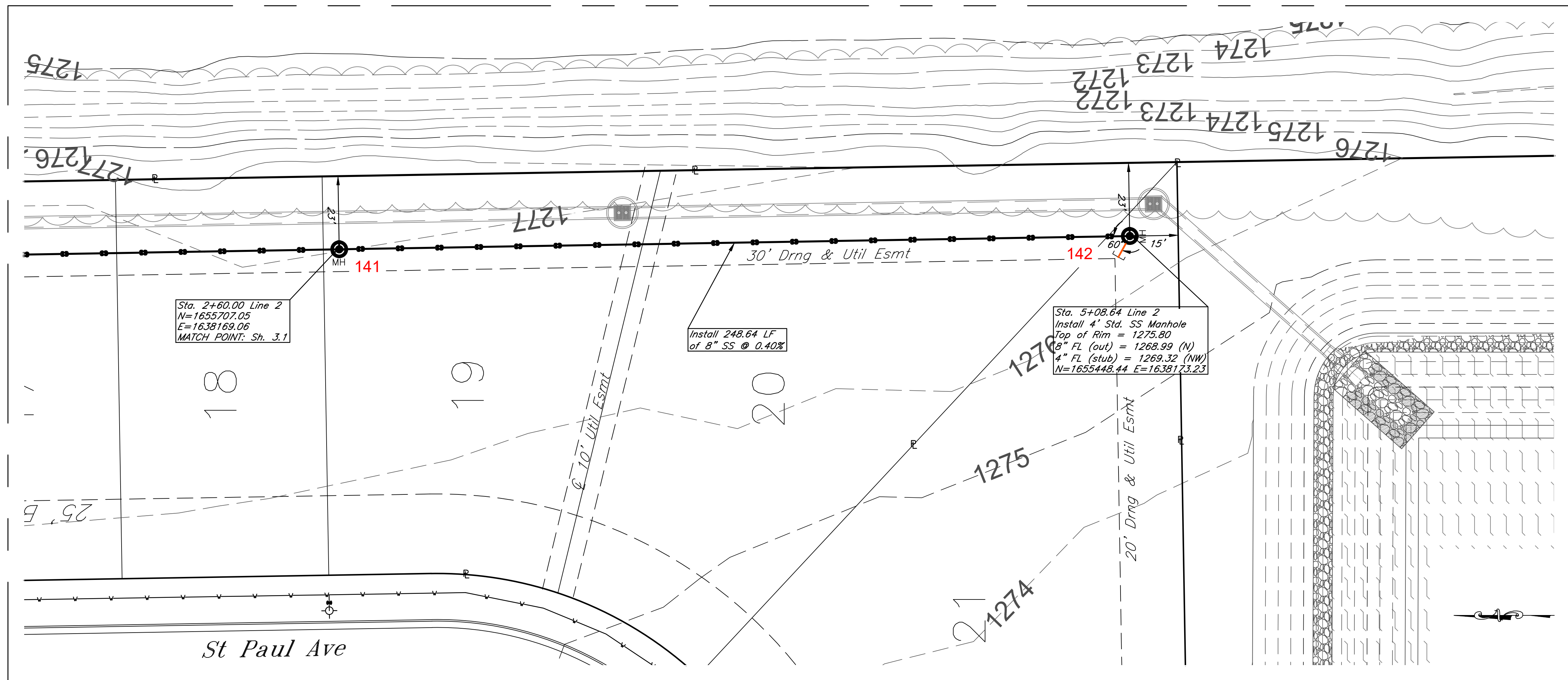
THIS SHEET HAS BEEN SIGNED, SEALED AND DATED DIGITALLY



Fox Run Addition (Phase II)
SS Plan & Profile - Line 2
Wichita, Kansas

	PROJECT NUMBER 468-2020-029856			SHEET 3.1
	KEM NO. 20061	FILE	DATE 08/2020	
DESIGN KM	DRAWN ZS	REVISED 02/15/2021		

February 15, 2021



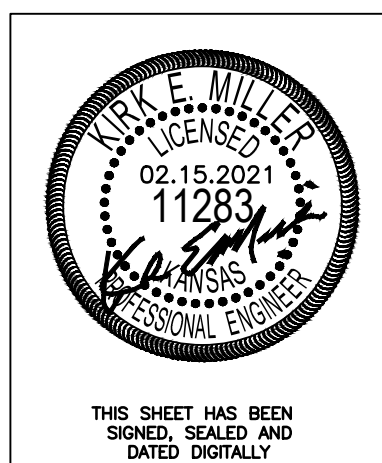
Sta. 2+60.00 Line 2
 N=1655707.05
 E=1638169.06
 MATCH POINT: Sh. 3.1

Install 248.64 LF
 of 8" SS @ 0.40%

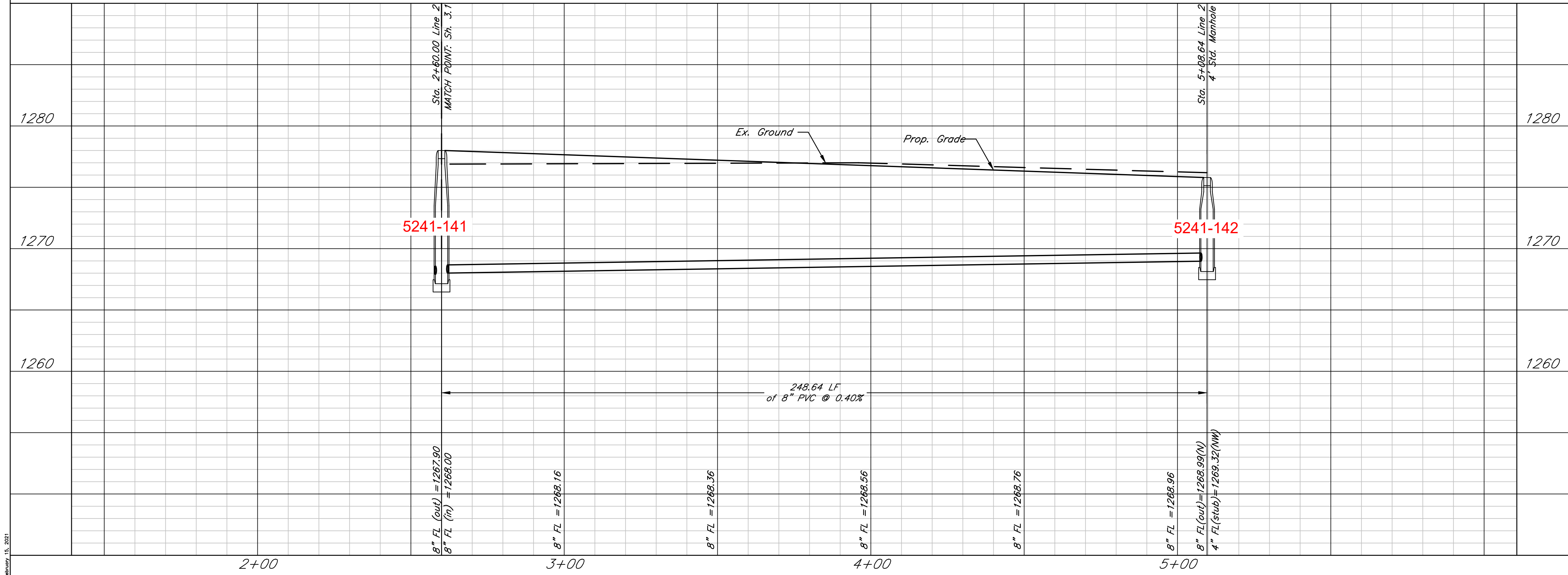
Sta. 5+08.64 Line 2
 Install 4" Std. SS Manhole
 Top of Rim = 1275.80
 8" FL (out) = 1268.99 (N)
 4" FL (stub) = 1269.32 (NW)
 N=1655448.44 E=1638173.23

St Paul Ave

Line 2



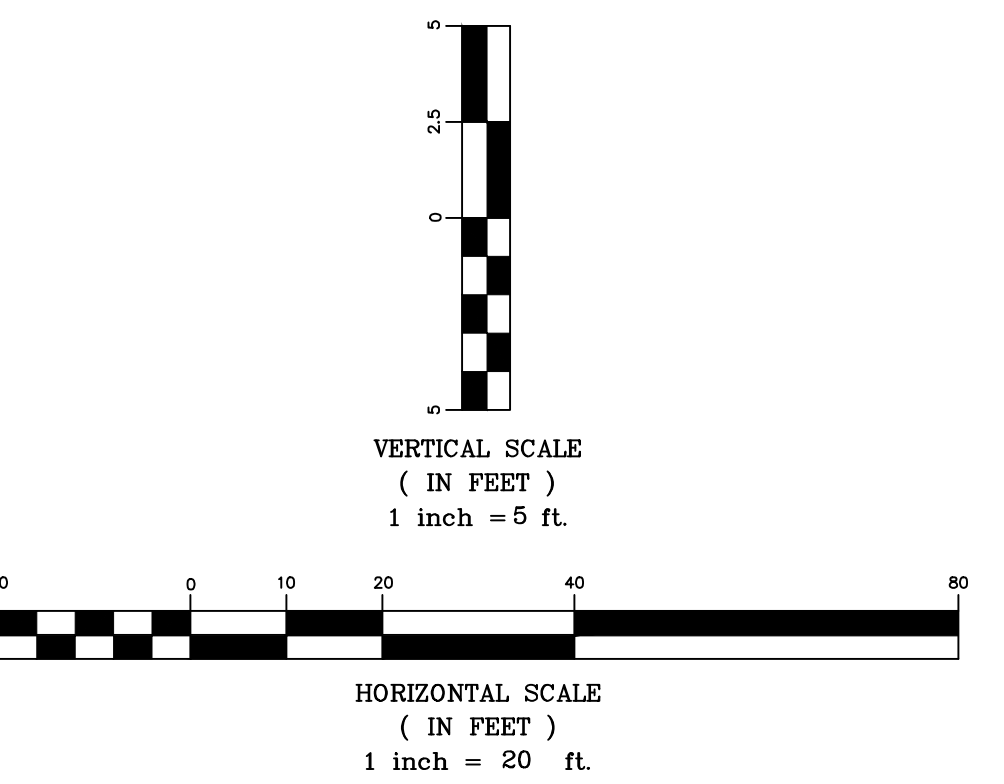
THIS SHEET HAS BEEN
 SIGNED, SEALED AND
 DATED DIGITALLY



5241-141

5241-142

248.64 LF
 of 8" PVC @ 0.40%



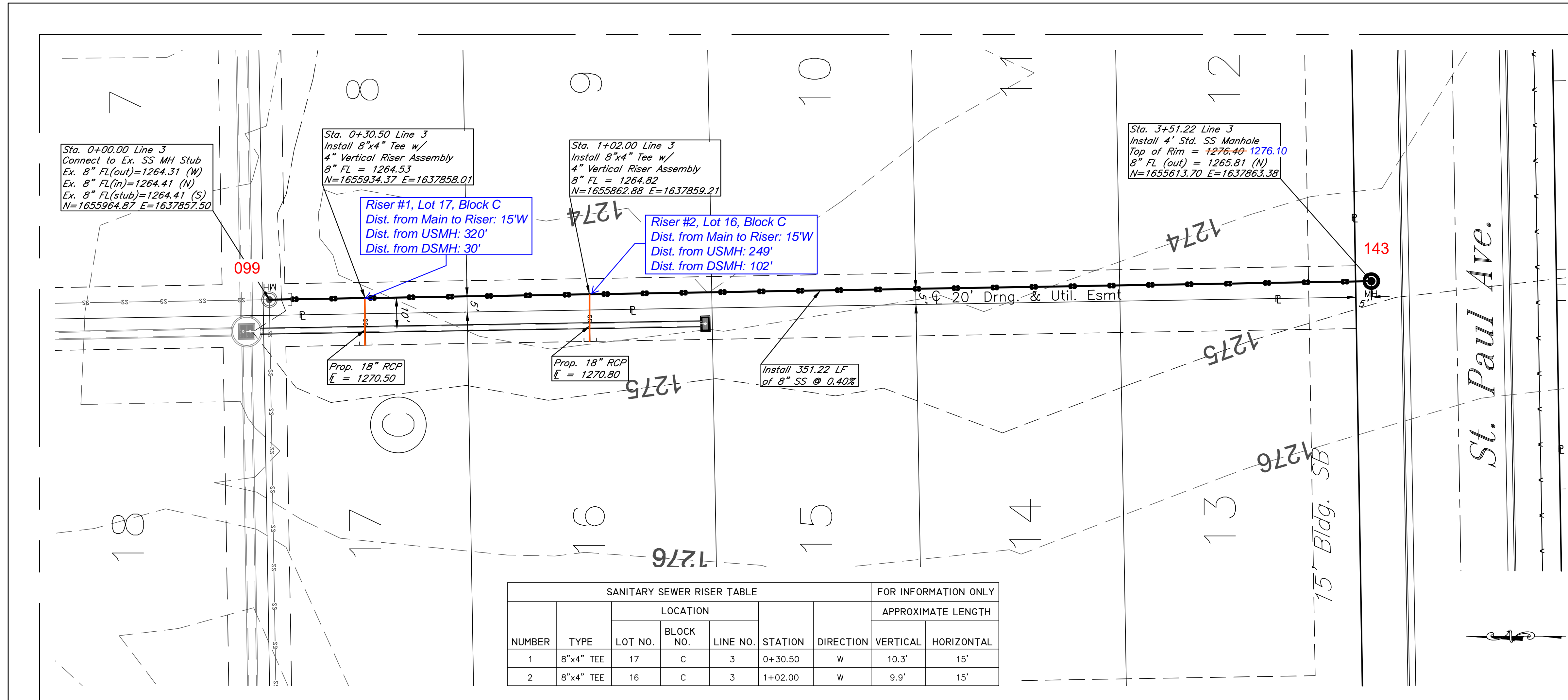
Fox Run Addition (Phase II)
 SS Plan & Profile - Line 2
 Wichita, Kansas

PROJECT NUMBER
 468-2020-029856



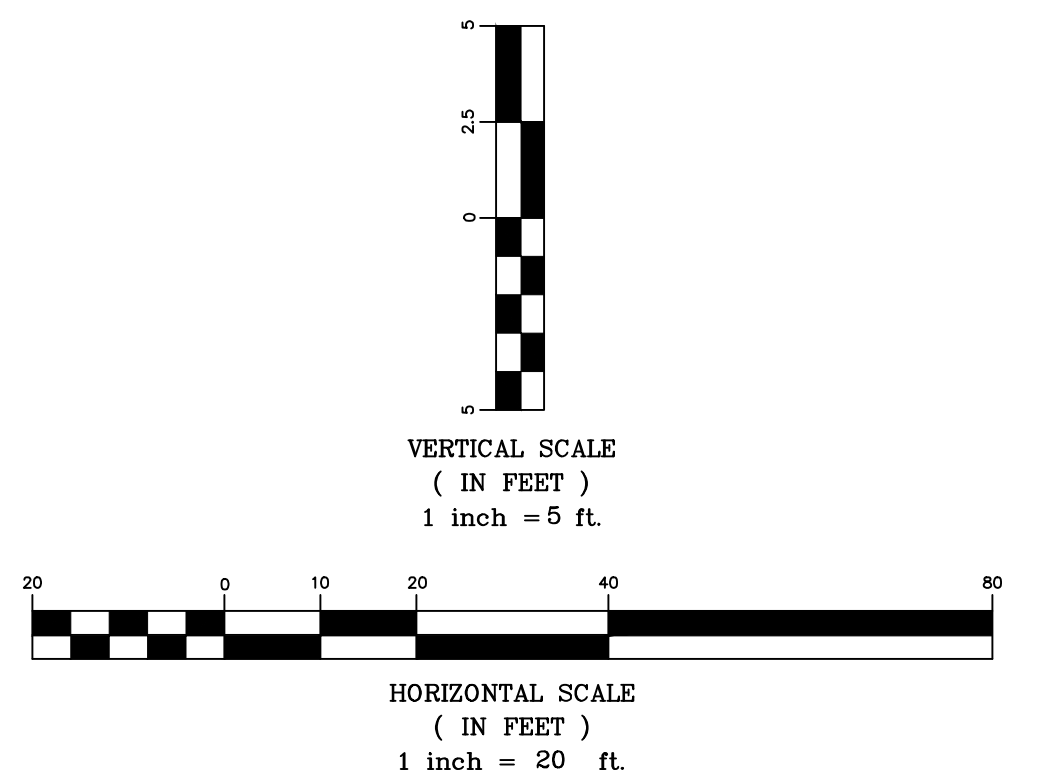
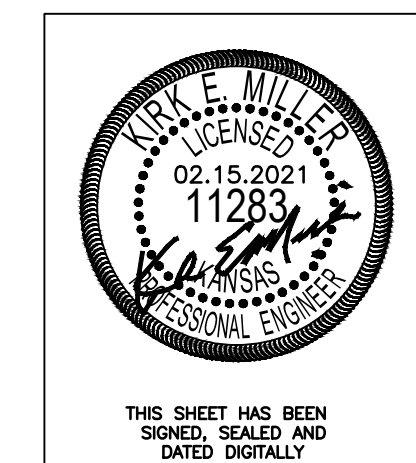
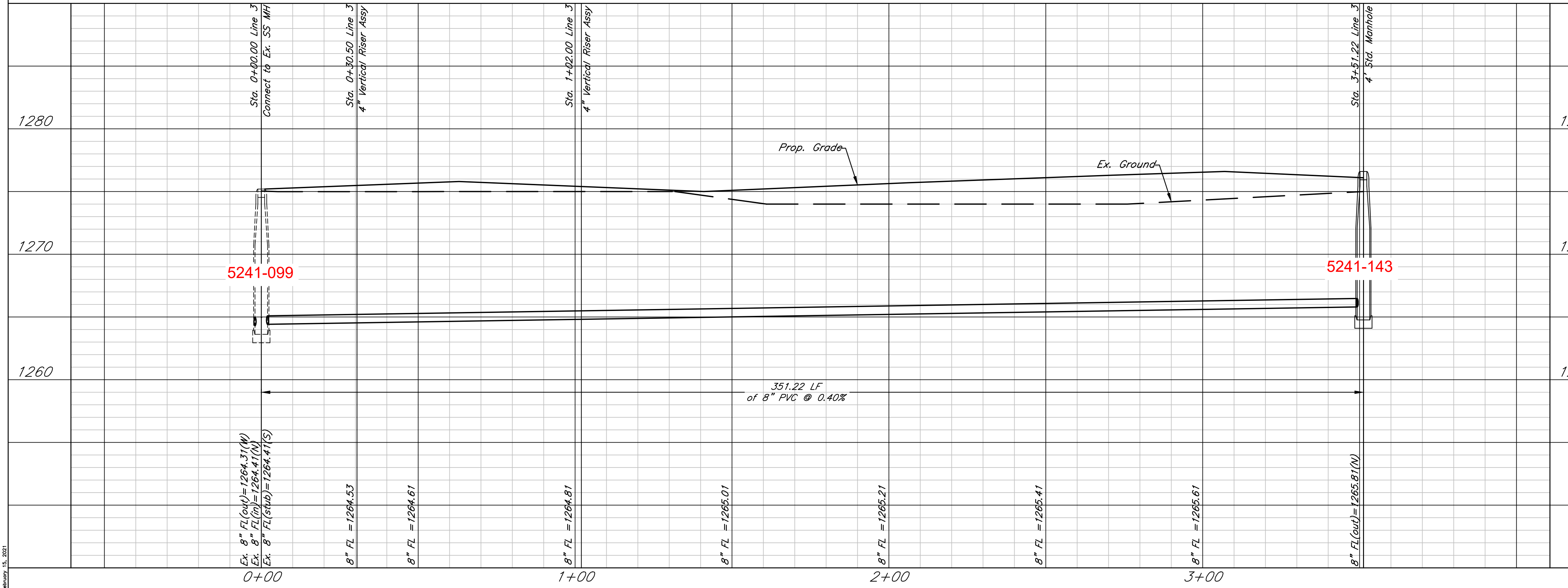
KEM NO. 20061	FILE	DATE 08/2020	SHEET 3.2
DESIGN KM	DRAWN ZS	REVISED 01/15/2021	
PROJECT NUMBER 468-2020-029856			

08/09/21 15:20:21



SANITARY SEWER RISER TABLE							FOR INFORMATION ONLY	
NUMBER	TYPE	LOCATION			STATION	DIRECTION	APPROXIMATE LENGTH	
		LOT NO.	BLOCK NO.	LINE NO.			VERTICAL	HORIZONTAL
1	8"x4" TEE	17	C	3	0+30.50	W	10.3'	15'
2	8"x4" TEE	16	C	3	1+02.00	W	9.9'	15'

Line 3

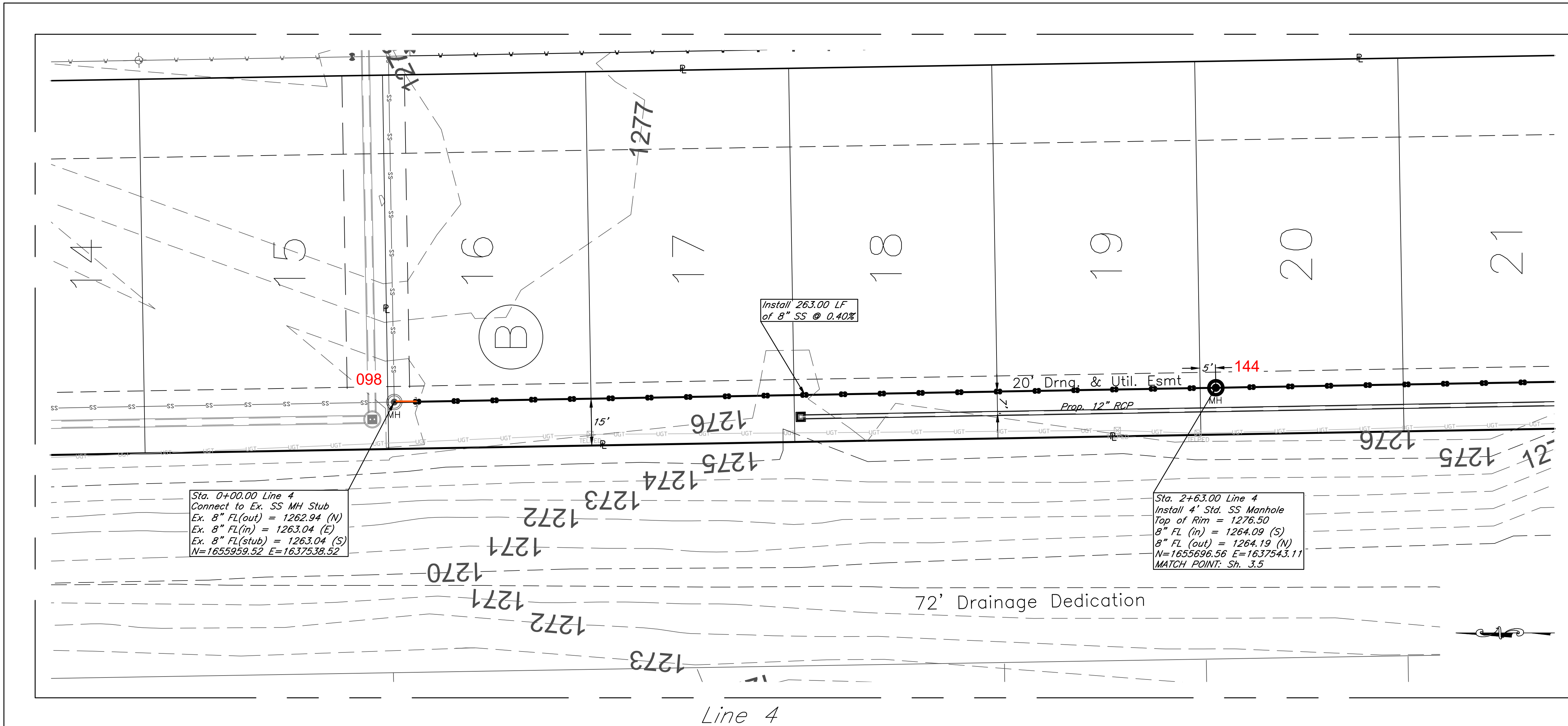


Fox Run Addition (Phase II)
SS Plan & Profile - Line 3
Wichita, Kansas

	PROJECT NUMBER 468-2020-029856		SHEET 3.3
	KEM NO. 20061 DESIGN KM	FILE DRAWN ZS	

117 E. Lewis, Wichita, KS 67202 (316)264-0242

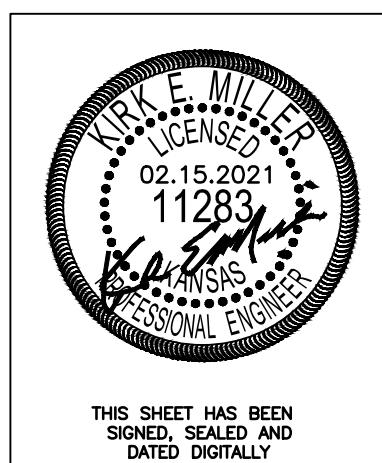
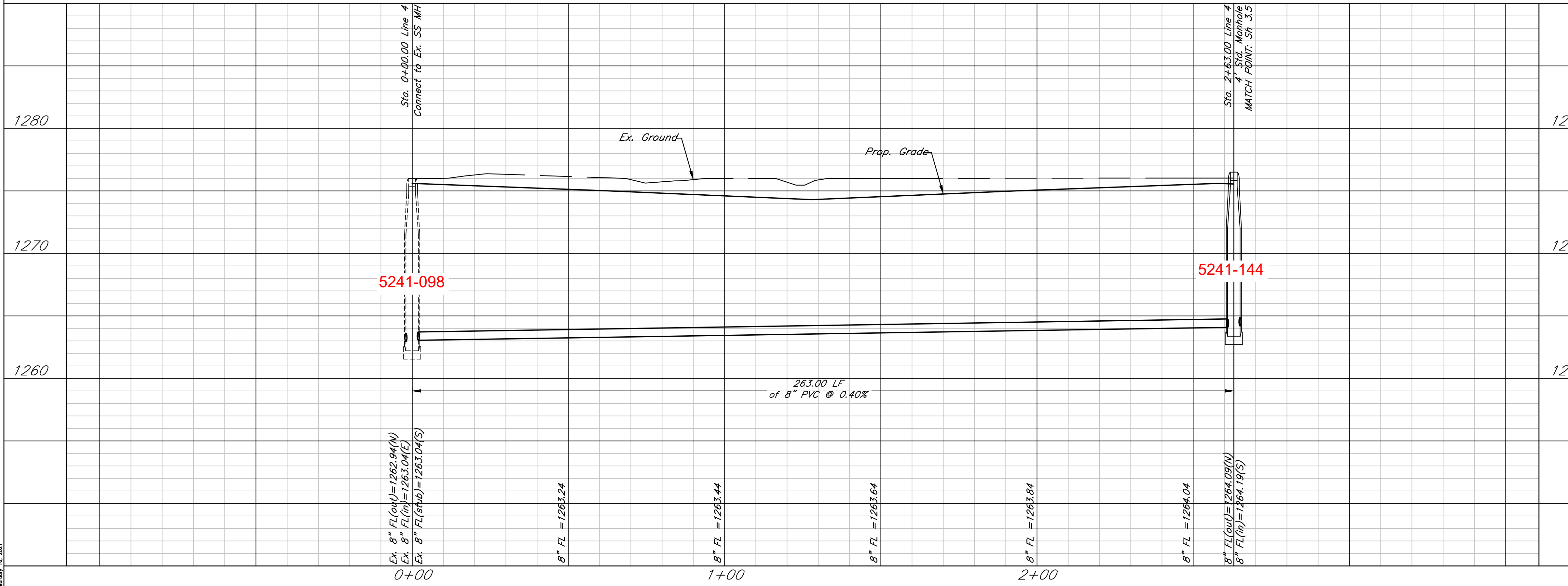
February 15, 2021



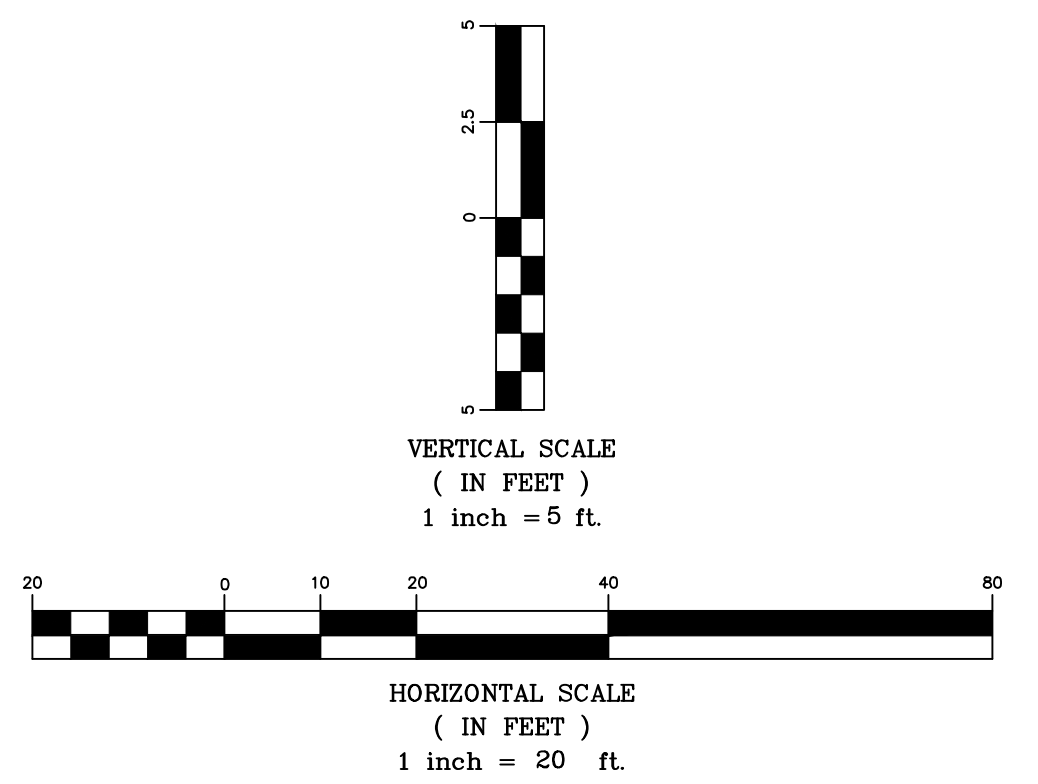
Sta. 0+00.00 Line 4
 Connect to Ex. SS MH Stub
 Ex. 8" FL(out) = 1262.94 (N)
 Ex. 8" FL(in) = 1263.04 (E)
 Ex. 8" FL(stub) = 1263.04 (S)
 N=1655959.52 E=1637538.52

Install 263.00 LF
 of 8" SS @ 0.40%

Sta. 2+63.00 Line 4
 Install 4' Std. SS Manhole
 Top of Rim = 1276.50'
 8" FL (in) = 1264.09 (S)
 8" FL (out) = 1264.19 (N)
 N=1653696.56 E=1637543.11
 MATCH POINT: Sh. 3.5



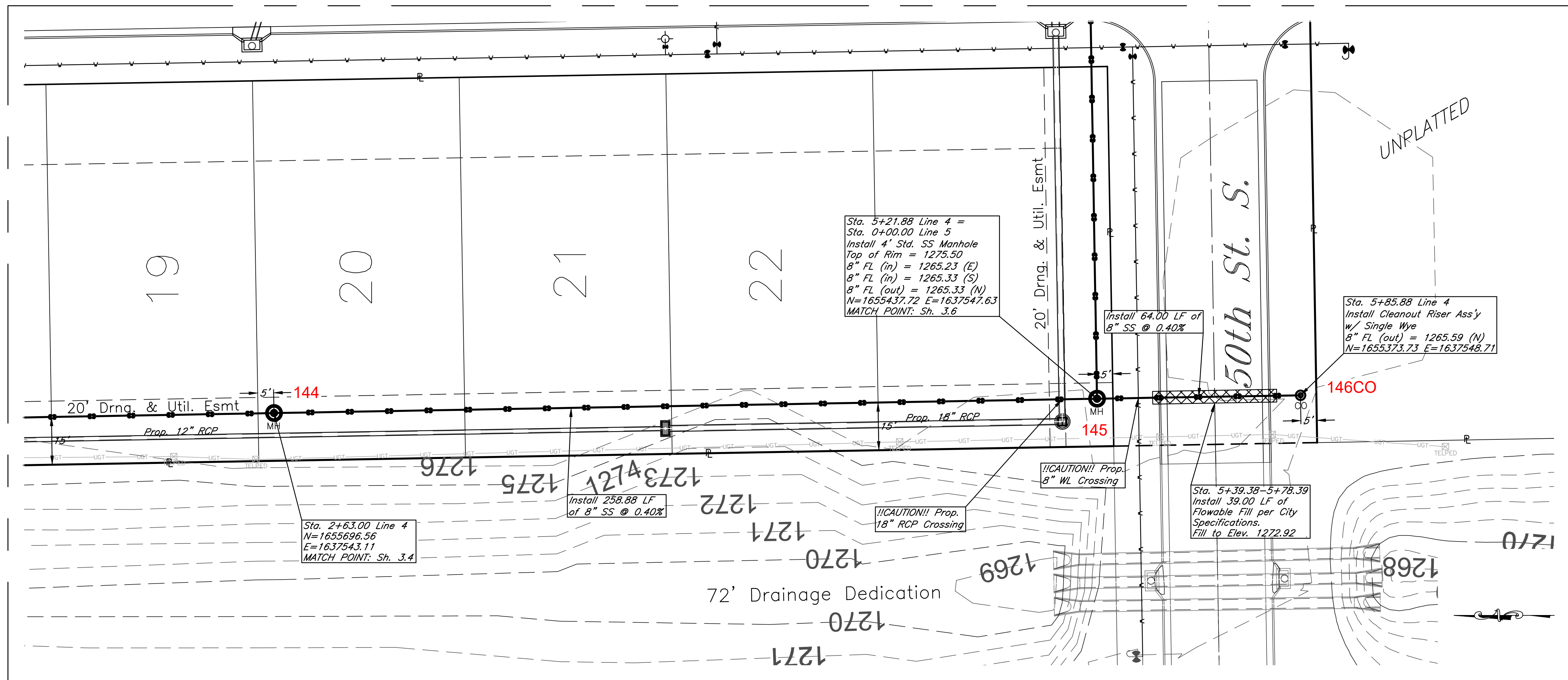
THIS SHEET HAS BEEN
 SIGNED, SEALED AND
 DATED DIGITALLY



Fox Run Addition (Phase II)
 SS Plan & Profile - Line 4
 Wichita, Kansas

 117 E. Lewis, Wichita, KS 67202 (316)264-0242	PROJECT NUMBER 468-2020-029856		SHEET 3.4
	KEM NO. 20061 DESIGN KM	FILE DATE 08/2020 DRAWN ZS REVISED 02/15/2021	

February 15, 2021



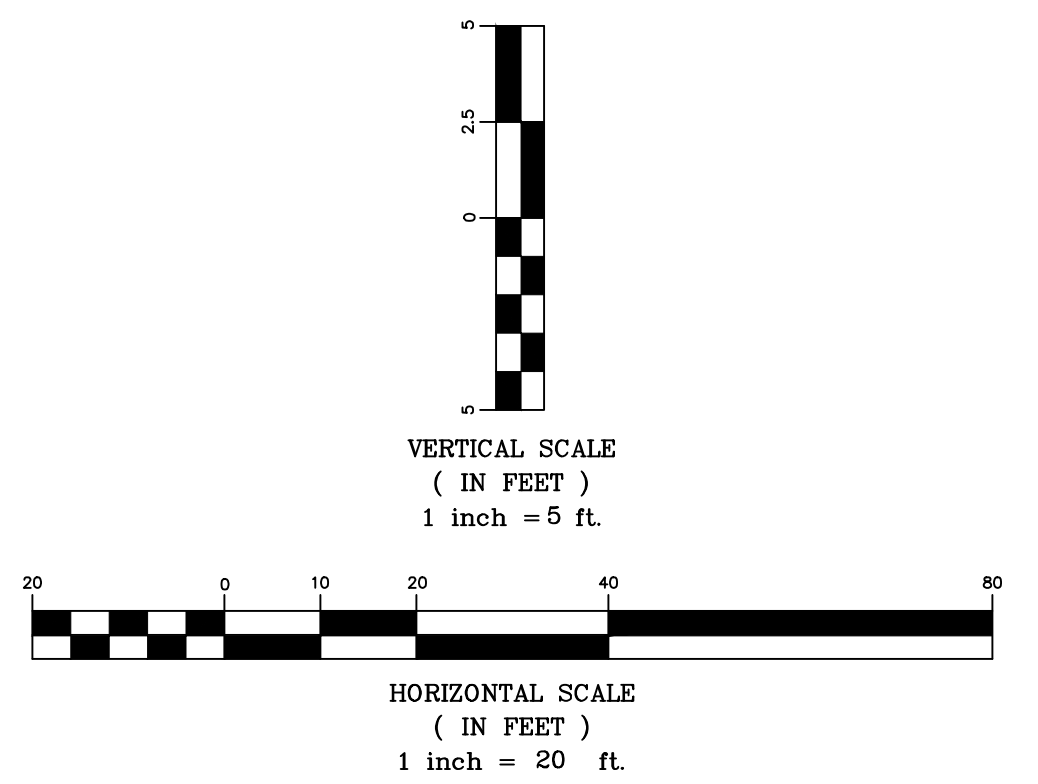
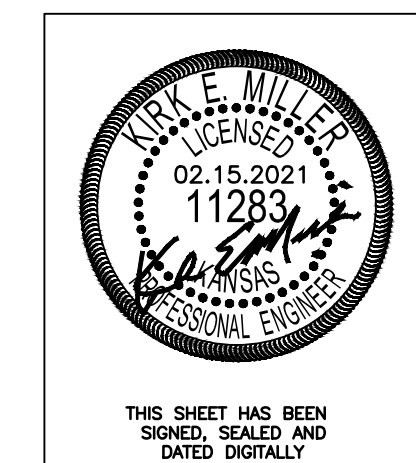
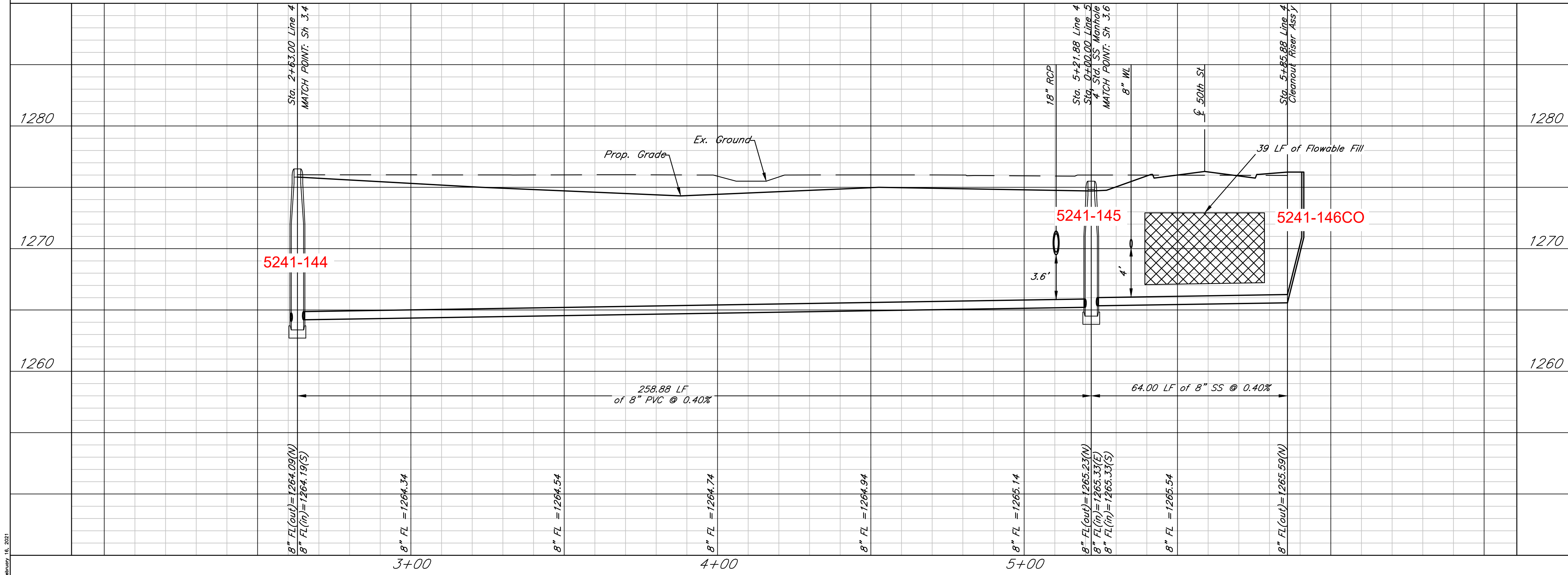
Sta. 5+21.88 Line 4 =
Sta. 0+00.00 Line 5
Install 4' Std. SS Manhole
Top of Rim = 1275.50
8" FL (in) = 1265.23 (E)
8" FL (in) = 1265.33 (S)
8" FL (out) = 1265.33 (N)
N=1655437.72 E=1637547.63
MATCH POINT: Sh. 3.6

Sta. 2+63.00 Line 4
N=1653696.56
E=1637543.11
MATCH POINT: Sh. 3.4

Sta. 5+85.88 Line 4
Install Cleanout Riser Ass'y
w/ Single Wye
8" FL (out) = 1265.59 (N)
N=1655373.73 E=1637548.71

Sta. 5+39.38-5+78.39
Install 39.00 LF of
Flowable Fill per City
Specifications.
Fill to Elev. 1272.92

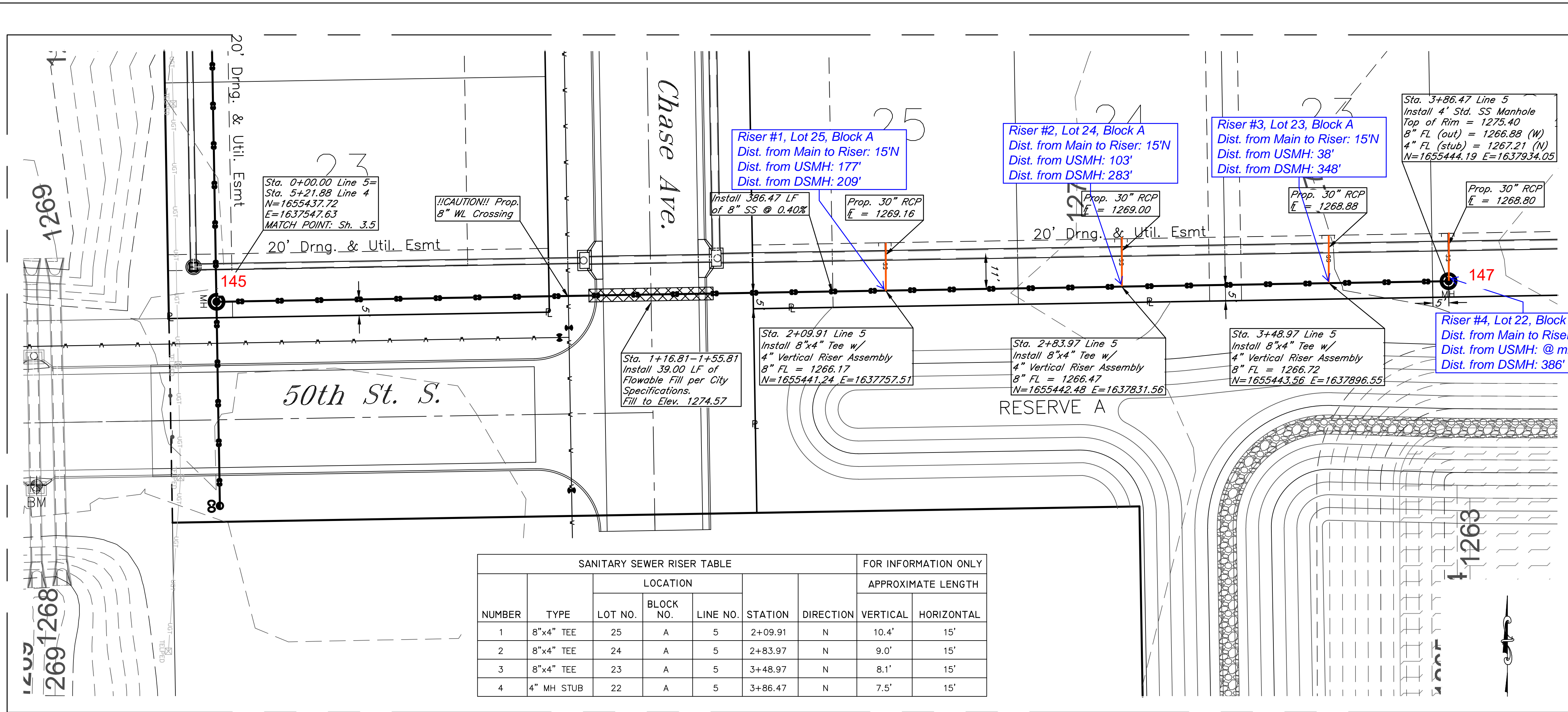
Line 4



Fox Run Addition (Phase II)
SS Plan & Profile - Line 4
Wichita, Kansas

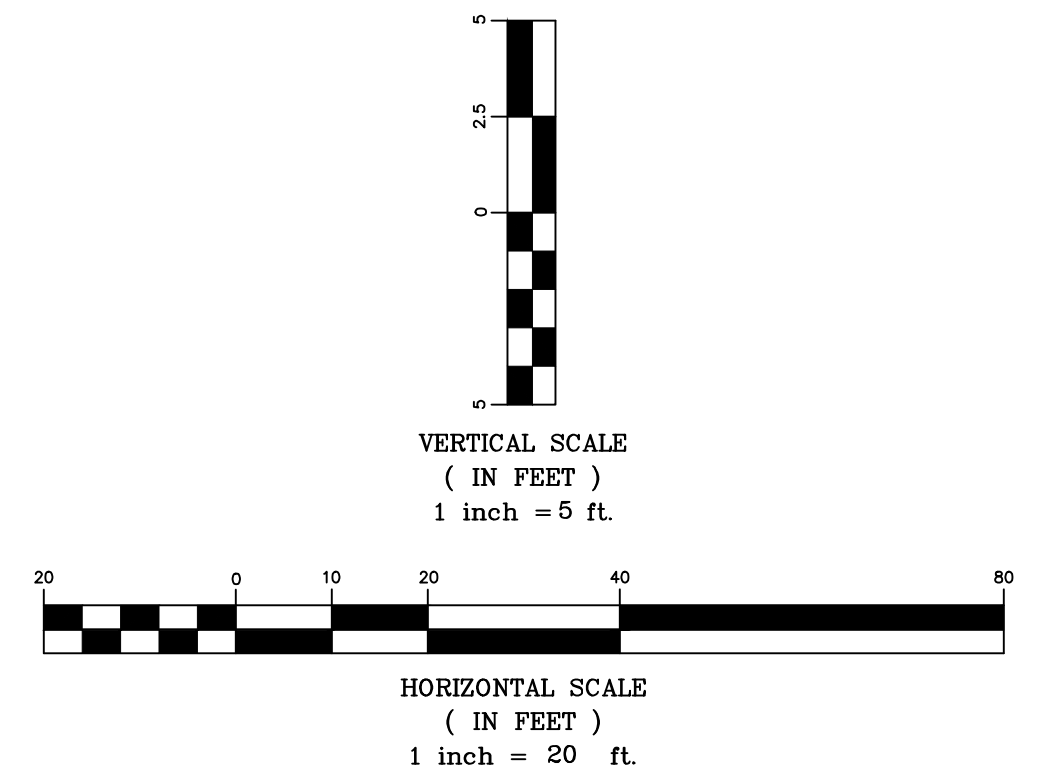
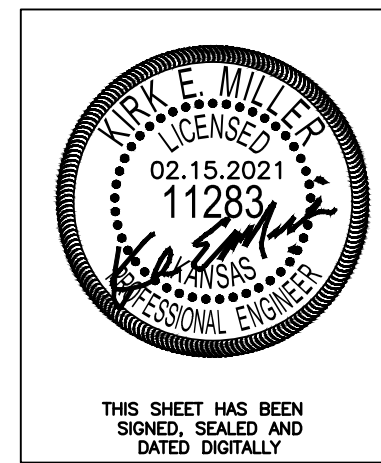
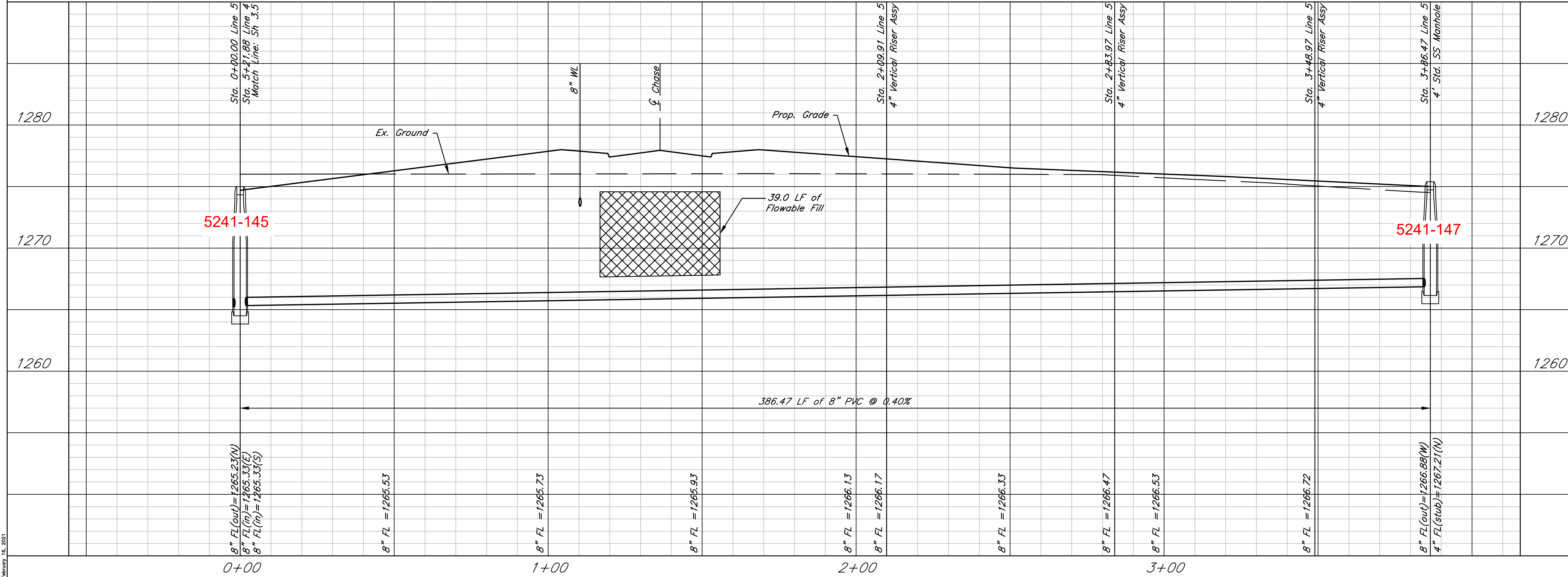
 117 E. Lewis, Wichita, KS 67202 (316)264-0242	PROJECT NUMBER 468-2020-029856		SHEET 3.5
	KEM NO. 20061 DESIGN KM	FILE DRAWN ZS	

February 15, 2021



SANITARY SEWER RISER TABLE							FOR INFORMATION ONLY	
NUMBER	TYPE	LOCATION			STATION	DIRECTION	APPROXIMATE LENGTH	
		LOT NO.	BLOCK NO.	LINE NO.			VERTICAL	HORIZONTAL
1	8"x4" TEE	25	A	5	2+09.91	N	10.4'	15'
2	8"x4" TEE	24	A	5	2+83.97	N	9.0'	15'
3	8"x4" TEE	23	A	5	3+48.97	N	8.1'	15'
4	4" MH STUB	22	A	5	3+86.47	N	7.5'	15'

Line 5



Fox Run Addition (Phase II)
SS Plan & Profile - Line 5
Wichita, Kansas

	PROJECT NUMBER 468-2020-029856			SHEET 3.6
	KEM NO. 20061	FILE	DATE 08/2020	
DESIGN KM	DRAWN ZS	REVISED 02/15/2021		

117 E. Lewis, Wichita, KS 67202 (316)264-0242

February 15, 2021