

GENERAL NOTES:

- The Contractor shall comply with all applicable safety regulations. All construction shall be completed following current City Standard Specifications and Special Provisions.
- Contractor will be required to provide notice to utility companies a minimum of seventy-two (72) hours prior to any excavation, as follows:

Kansas One-Call 687-2470

The Contractor must notify the following in case of an emergency:

AT&T	1-800-246-8464
Black Hills Energy	1-800-694-8989
City of Wichita Water & Sewer	1-316-219-8921
City of Wichita Stormwater	1-316-268-4090
City of Wichita Traffic	1-316-268-4034
Cox Communications	1-888-249-3530
Kansas Gas Service	1-888-482-4950
Everg	1-800-544-4857

- Utility service lines, poles, etc. are to be adjusted as necessary by others prior to construction unless the plans specifically call for their adjustment by the Contractor or unless the plans specifically identify a utility to be adjusted by its owner during construction. Existing utilities and their location, as shown on the plans, represent the best information obtainable for design. The Contractor will be required to work around existing utilities within the right-of-way which do not conflict with proposed construction.
- Rubble from the removal of miscellaneous structures and excess excavation which is to be wasted shall be disposed of on sites to be provided by the Contractor. These sites shall be approved by the Engineer as to suitability, appearance and site location. Locations, in the opinion of the Engineer, that will leave an unsightly appearance will not be approved. All disposal sites must be approved by the Kansas Department of Health and Environment. Material either stockpiled or disposed of in a flood plain will require a Kansas State Board of Agriculture permit. Any material dumped in waters of the United States or wetlands is subject to U.S. Corps. of Engineers permitting regulations. Any material buried or stockpiled beyond approved construction limits will require additional archaeological investigations unless buried in a previously approved borrow location.
- Trees and shrubs in public right-of-way which are in direct conflict with proposed new construction shall be removed by the Contractor with the City Engineer's approval. Trees and shrubs which are not in direct conflict with proposed new construction shall be saved and protected from damage.
- The Contractor shall give all property owners and/or tenants of developed property abutting the construction of this project a minimum of ten (10) days notice prior to start of construction.
- The Contractor shall be responsible for preserving property irons. The Contractor will be required to re-establish any property irons which are damaged or destroyed by his construction operations. Such irons shall be re-established by a licensed land surveyor in accordance with state laws.
- All elevations shown are NAVD88.
- All stubs and capped pipes shall be located with green plastic tape in the same manner as risers.
- Connecting to Existing Manholes:
Prior to laying sewer lines using existing stubs in existing manholes, the Contractor shall expose and verify the elevation, grade and alignment of existing stubs and notify the Engineer of any deviation from the plans. Where the stub is unusable due to elevation grade or alignment, the Contractor shall remove the stub and plug the hole, and reshape the existing manhole invert to provide smooth flow. Where connection to an existing manhole that does not have an existing stub, the Contractor shall core cut into existing manhole wall to make connection using approved water stop gasket, and reshape the existing manhole invert to provide smooth flow. The cost of connect to existing manholes is incidental to the project.
- Contractor shall limit the extent of trench open overnight and weekends to less than 50 feet.
- Contractor shall provide positive drainage away from all manhole covers.
- The Contractor shall prevent any construction debris from entering the existing sanitary sewer during construction.

- The Contractor shall protect from damage and support existing utilities through construction as approved by the utility owner and the Engineer at the contractor's expense.
- Contractor shall grade around exposed manholes at a 1:1 slope. Manholes set lower than existing grade shall have a 9" berm constructed around manhole to prevent infiltration into sanitary sewer system. Cost of dirt, labor, equipment, etc. to be incidental to cost of manhole. Easements shall be graded with the SWD project as part of the mass grading plan.
- All disturbed areas are to be seeded as follows:

Seed -- Rye grass; 5 lbs./1000 Sq. Ft.

All costs associated with seeding including mobilization, preparation of ground, seeding, fertilizing, mulching, etc. shall be included in the L.S. bid item "Seeding".
- All existing and proposed erosion control measures including silt fencing, erosion control mat, straw bales, inlet barriers, and const. entrance shall be maintained throughout construction by the contractor and until project is accepted by the City of Wichita. The on-site engineer shall complete weekly reports on the status of erosion control measures. The contractor shall be required to comply with maintenance and/or replacement of erosion control measures as determined by the on-site engineer until project is accepted by City of Wichita. Maintenance and/or replacement of erosion control measures to be paid by L.S. bid item "Maintain Existing BMPs".
- All excess excavation shall remain on-site and shall be stockpiled or spread at a location determined by the engineer.
- The developer for this project is Ritchie Development, Jeff Mullen, (316)684-7300.

Benchmarks

BM #1: "□" on top of curb, south end of return at SW corner of 29th St. N. & Bracken. Elev. = 1396.38 NAVD88

BM #2: "□" on top of curb, east side of Bracken, 285' south of 29th St. N. Elev. = 1398.91 NAVD88

BM #3: "□" on corner of curb inlet near NW corner of Lot 45, Block E, Firefly Way Addition. Elev. = 1397.03 NAVD88

SANITARY SEWER IMPROVEMENTS to serve FIREFLY WAY 2ND ADDITION

CITY OF WICHITA, KANSAS

Gary Janzen, P.E. City Engineer
Project Number 468-2020-036661
Org Code #47263621
Munis Number E1018

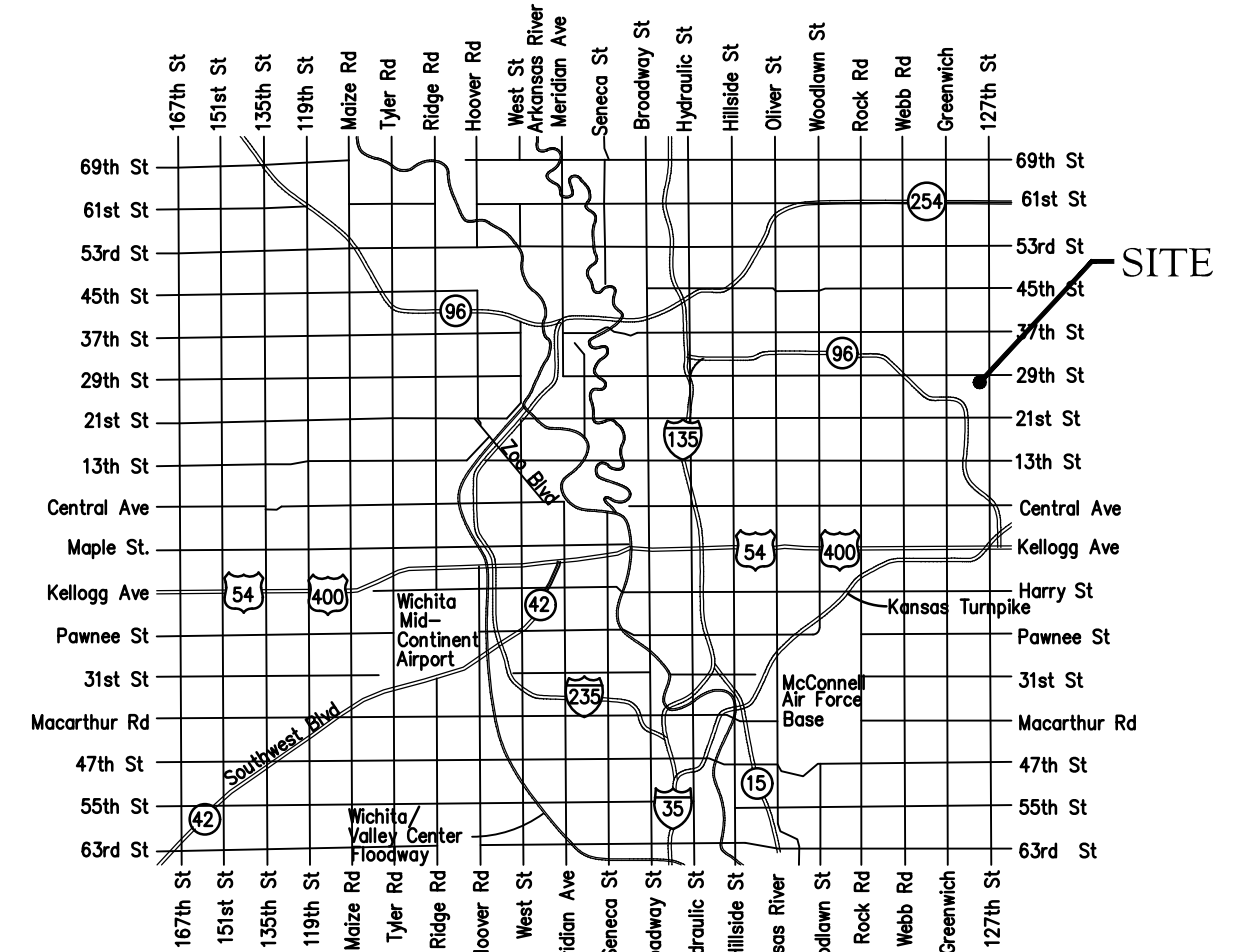
Contractor - Mies
Foreman - Mike Gilmore
Inspector - Roger Skilling
Engineer - Kevin Yale

Project # 468-2020-036661
Org # 47263621 Munis # E1018

Project Built to plan.

As-built
Stubs & Risers
Release Date (for connection purposes only): 12/10/2021
pdf: apr 12/10/2021

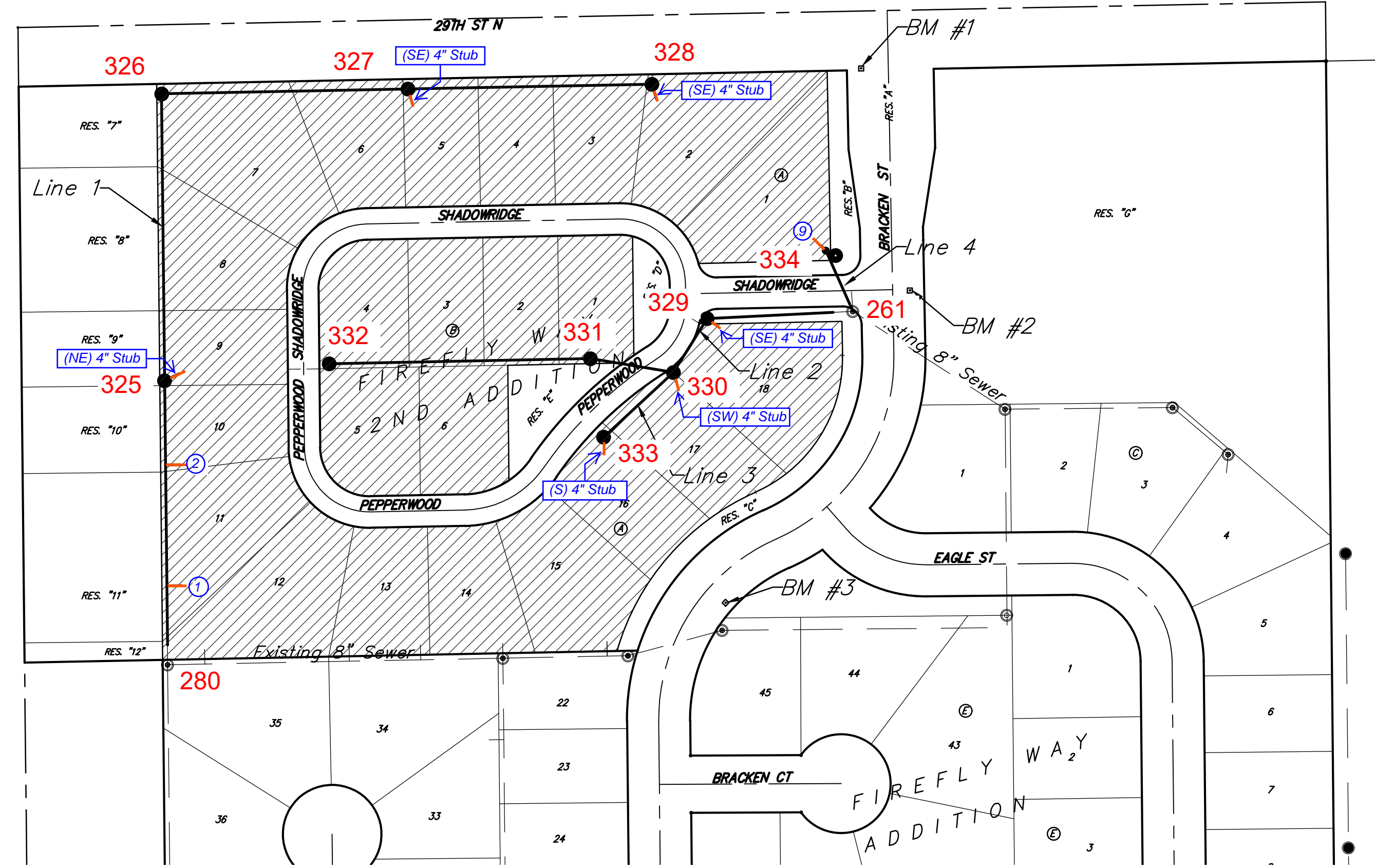
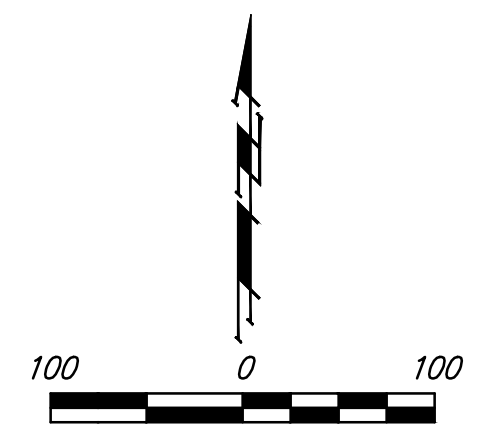
6250A
Basin: WIS-07



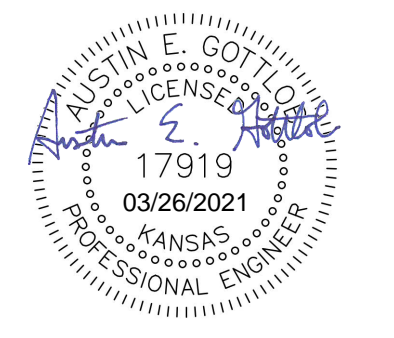
Vicinity Map

Sheet Index

Title Sheet	1
Line 1	2
Line 2	3
Lines 3 & 4	4
Erosion Control Plan	5
Precast SS Manhole Detail	6
Manhole Frame & Cover Detail	7
Vertical Riser Detail	8
Erosion Control BMP Details	9-13
Coordinate Sheet	14
Copy of Plat	15



Benefit District



March 23, 2021

BAUGHMAN COMPANY
315 Ellis St. Wichita, KS 67211 316-262-7271
BaughmanCo.com

E:\Projects\Firefly Way 2nd Addition\Engineering\Phase 1\SS\Bsewer.dwg

BENCHMARKS:

BM #1: "□" on top of curb, south end of return at SW corner of 29th St. N. & Bracken. Elev. = 1396.38 NAVD88

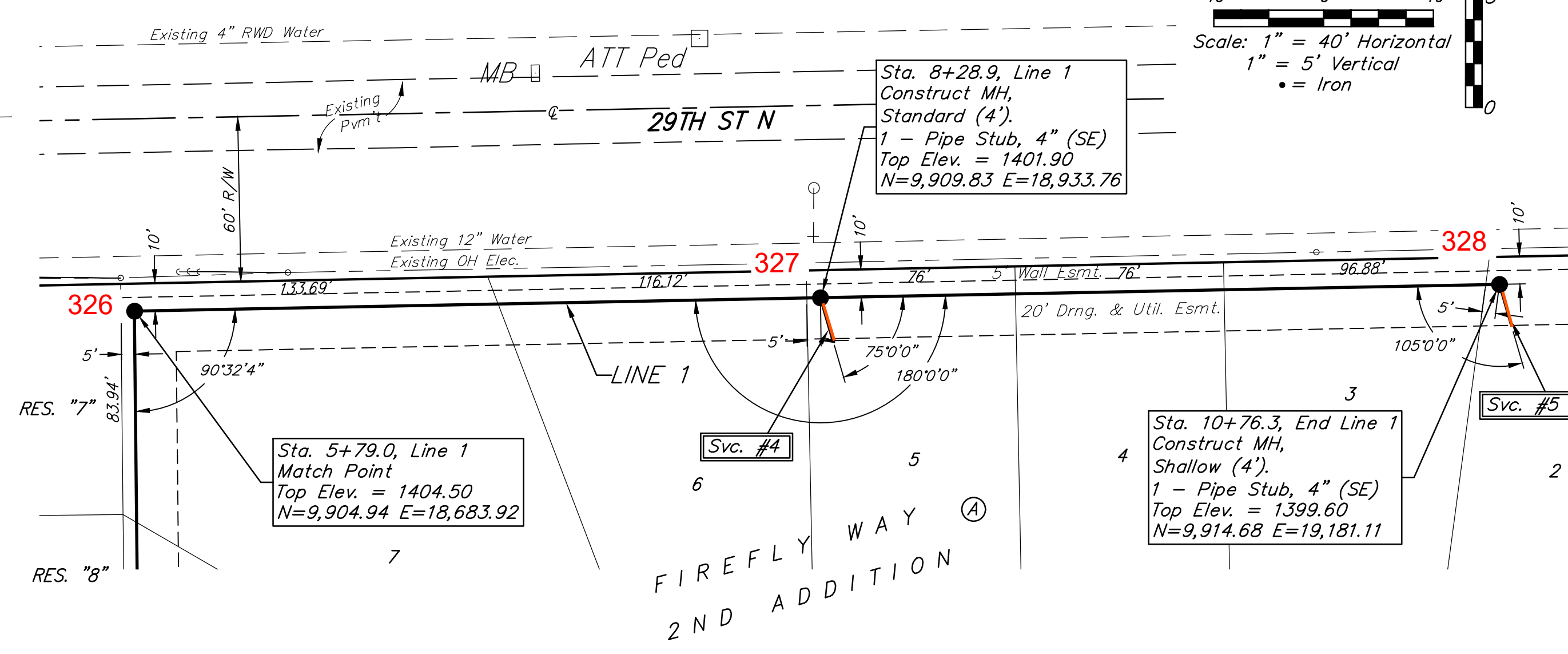
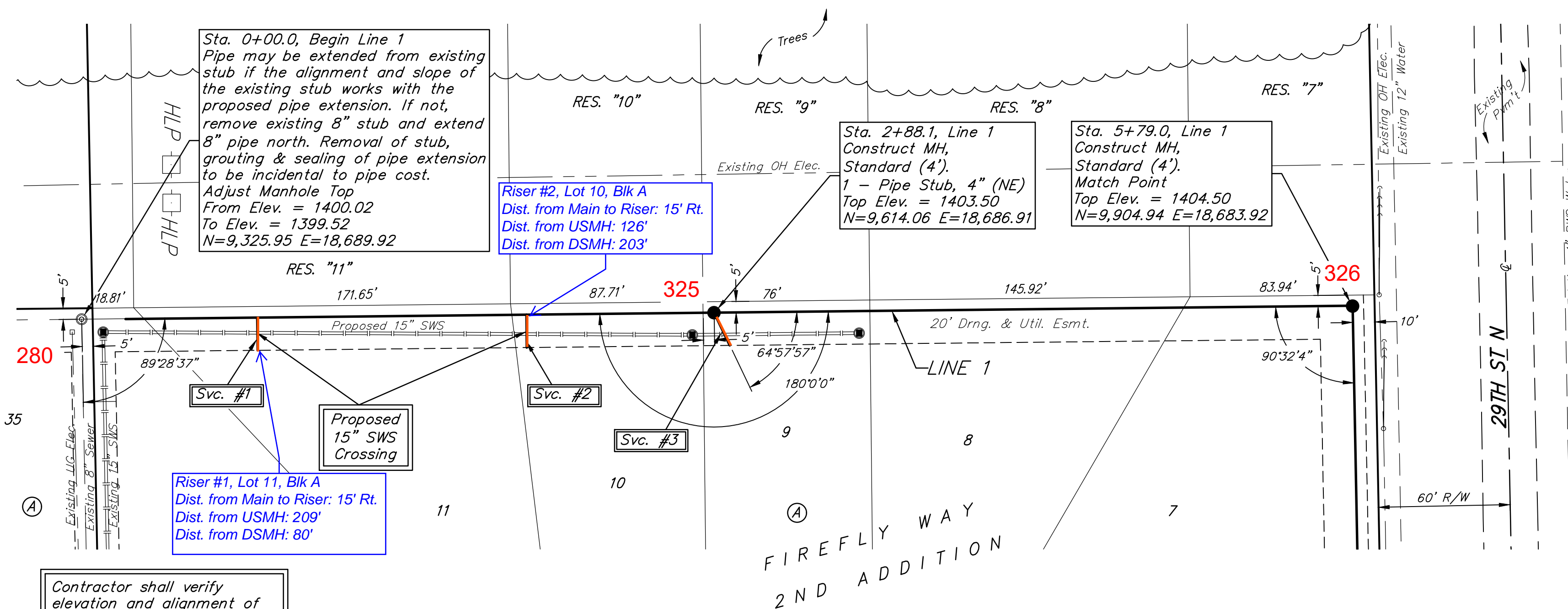
BM #2: "□" on top of curb, east side of Bracken, 285' south of 29th St. N. Elev. = 1398.91 NAVD88

BM #3: "□" on corner of curb inlet near NW corner of Lot 45, Block E, Firefly Way Addition. Elev. = 1397.03 NAVD88

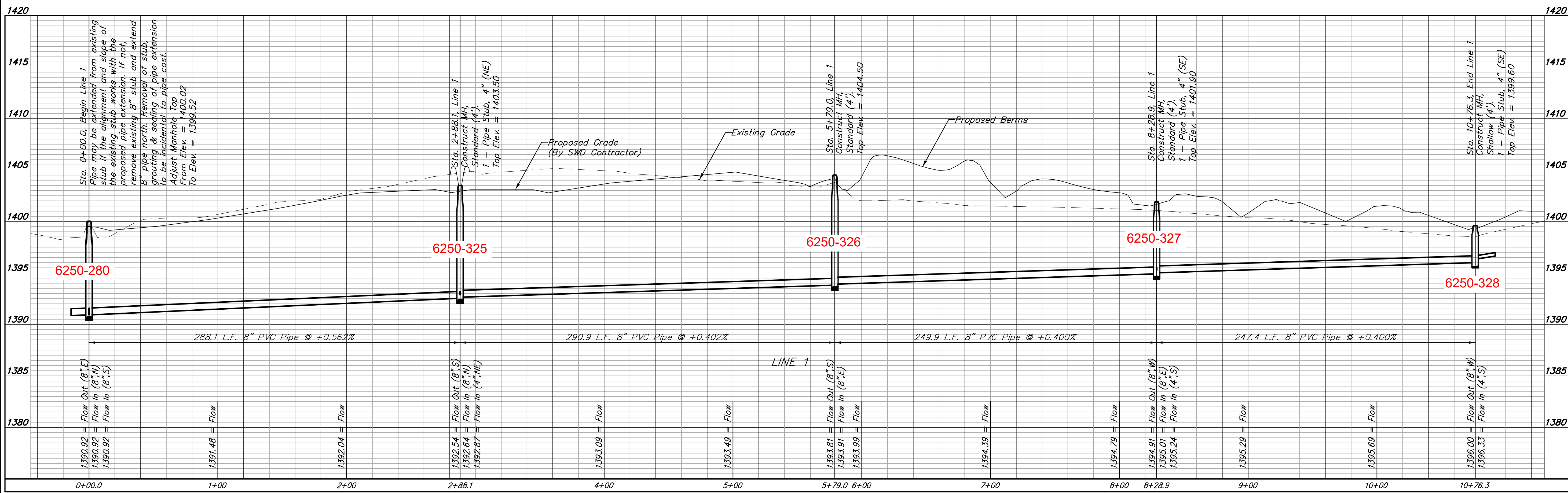
SEWER SERVICE TABLE

NUMBER	TYPE	LOCATION				FOR INFORMATION ONLY	
		LOT NO.	BLOCK NO.	LINE NO.	STATION \ DIRECTION	APPROXIMATE LENGTH 4" PIPE	
1	8" X 4" Tee W/Riser	11	A	1	0+80.0/Rt.	5.0'	15.0'
2	8" X 4" Tee W/Riser	10	A	1	2+02.6/Rt.	7.0'	15.0'
3	4" Stub	9	A	1	2+88.1/Rt.	-	16.5'
4	4" Stub	5	A	1	8+28.9/Rt.	-	15.5'
5	4" Stub	2	A	1	10+76.3/Rt.	-	15.5'

NOTE: Vertical Riser Pipe shall be extended to 2' minimum above ground water elevation and 4' maximum below proposed ground elevation.



Contractor shall verify elevation and alignment of existing 8" pipe prior to construction and notify Engineer of any discrepancy.



BAUGHMAN COMPANY
 315 Ellis St.
 Wichita, KS 67211
 316-262-7271
 BaughmanCo.com

FIREFLY WAY
2ND ADDITION

LINE 1

SANITARY SEWER
IMPROVEMENTS

PROJECT NUMBER:
20-09-E707

DESIGN: AEG DRAWN: TMS

DATE: March 23, 2021

SHEET OF
2 15

File: E:\Projects\Firefly Way 2nd Addition\Engineering\Phase 1\SSSewer.dwg

BENCHMARKS:

BM #1: "□" on top of curb, south end of return at SW corner of 29th St. N. & Bracken. Elev. = 1396.38 NAVD88

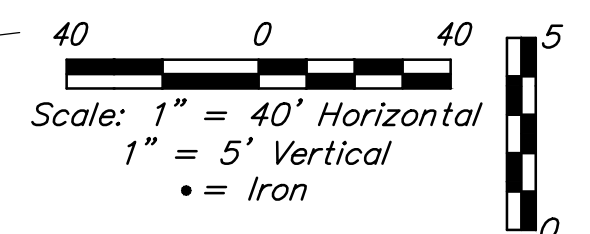
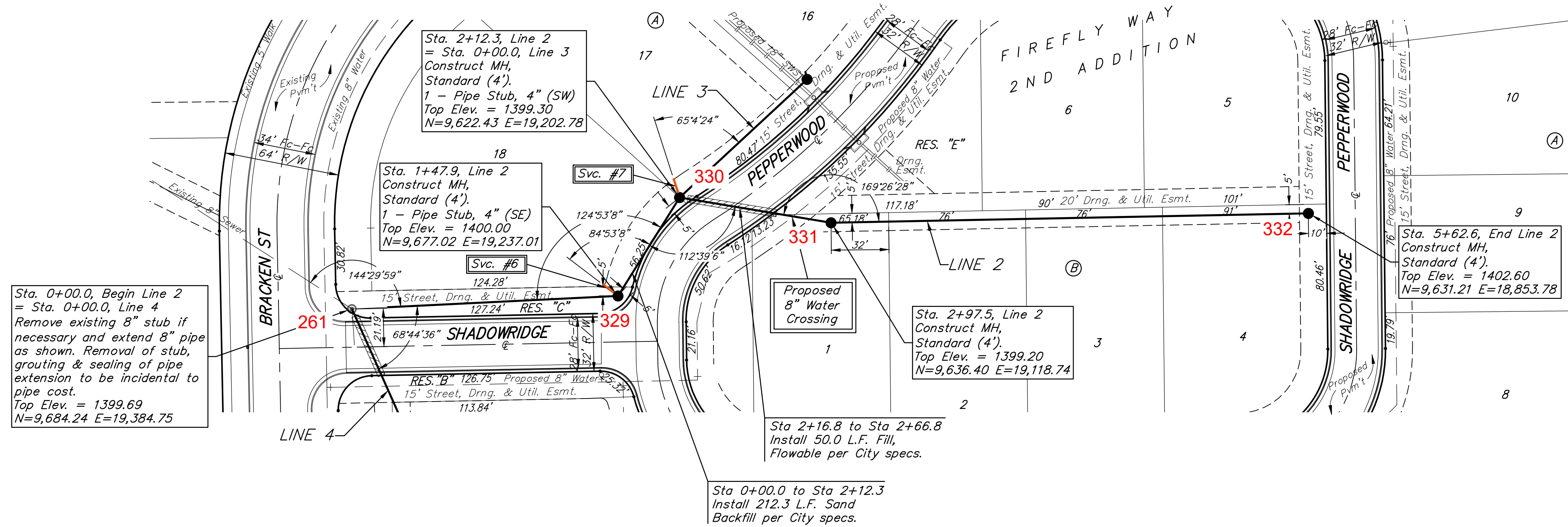
BM #2: "□" on top of curb, east side of Bracken, 285' south of 29th St. N. Elev. = 1398.91 NAVD88

BM #3: "□" on corner of curb inlet near NW corner of Lot 45, Block E, Firefly Way Addition. Elev. = 1397.03 NAVD88

SEWER SERVICE TABLE

NUMBER	TYPE	LOCATION				FOR INFORMATION ONLY	
		LOT NO.	BLOCK NO.	LINE NO.	STATION \ DIRECTION	APPROXIMATE LENGTH 4" PIPE	
6	4" Stub	18	A	2	1+47.9/Lt.	-	10.0'
7	4" Stub	17	A	2	2+12.3/Lt.	-	10.7'

NOTE: Vertical Riser Pipe shall be extended to 2' minimum above ground water elevation and 4' maximum below proposed ground elevation.



Sta. 0+00.0, Begin Line 2 = Sta. 0+00.0, Line 4
Remove existing 8" stub if necessary and extend 8" pipe as shown. Removal of stub, grouting & sealing of pipe extension to be incidental to pipe cost.
Top Elev. = 1399.69
N=9,684.24 E=19,384.75

Sta. 1+47.9, Line 2
Construct MH, Standard (4').
1 - Pipe Stub, 4" (SE)
Top Elev. = 1400.00
N=9,677.02 E=19,237.01

Sta. 2+12.3, Line 2 = Sta. 0+00.0, Line 3
Construct MH, Standard (4').
1 - Pipe Stub, 4" (SW)
Top Elev. = 1399.30
N=9,622.43 E=19,202.78

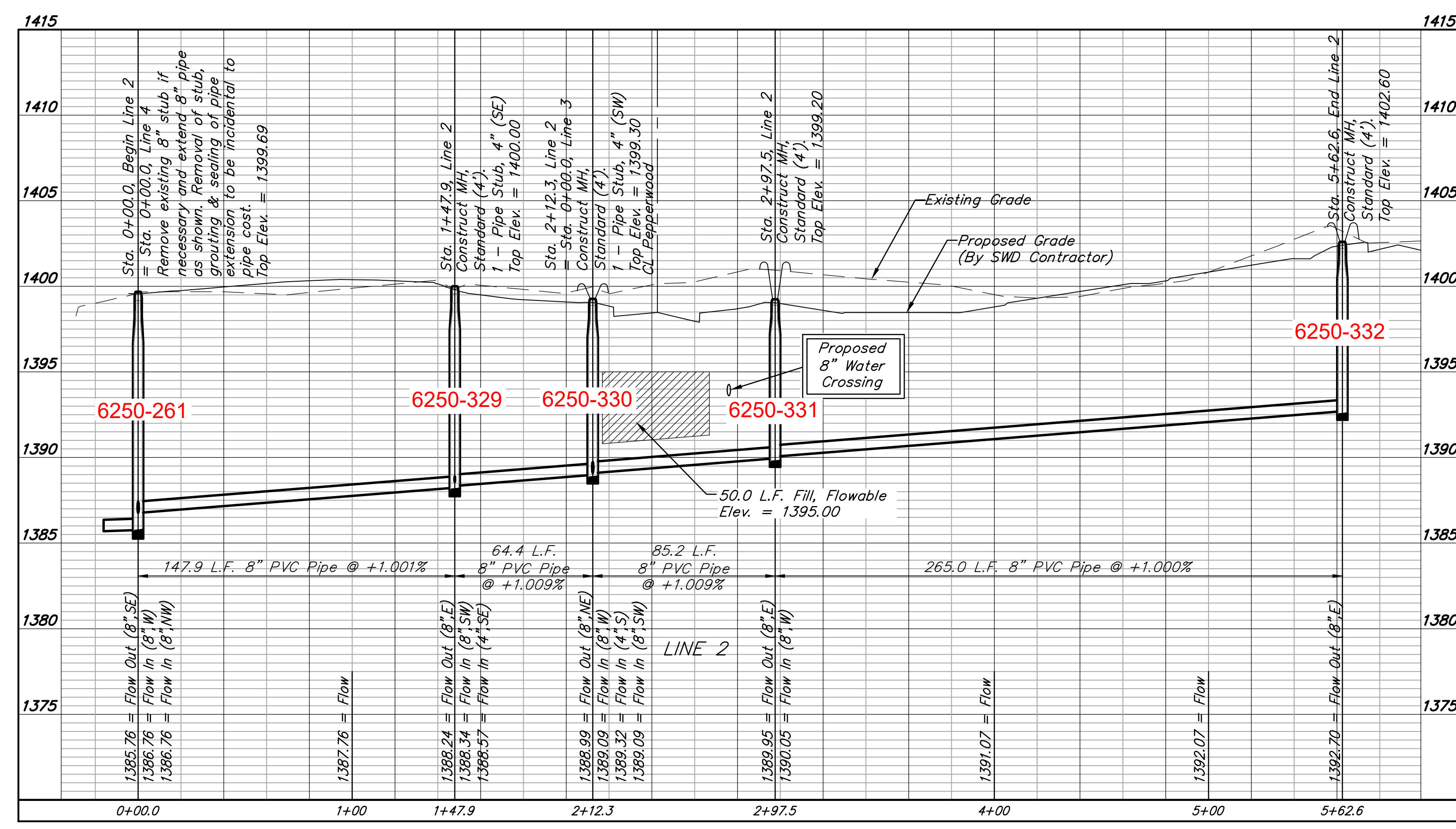
Sta. 2+97.5, Line 2
Construct MH, Standard (4').
Top Elev. = 1399.20
N=9,636.40 E=19,118.74

Sta. 5+62.6, End Line 2
Construct MH, Standard (4').
Top Elev. = 1402.60
N=9,631.21 E=18,853.78

Sta 2+16.8 to Sta 2+66.8
Install 50.0 L.F. Fill, Flowable per City specs.

Sta 0+00.0 to Sta 2+12.3
Install 212.3 L.F. Sand Backfill per City specs.

Contractor shall verify elevation and alignment of existing 8" pipe prior to construction and notify Engineer of any discrepancy.



BAUGHMAN COMPANY
 315 Ellis St.
 Wichita, KS 67211
 316-262-7271
 BaughmanCo.com

PROJECT NUMBER:
 20-09-E707

DESIGN: AEG DRAWN: TMS
DATE: March 23, 2021

SHEET 3 OF 15

FILE: E:\Projects\Firefly Way 2nd Addition\Engineering\Phase 1\SSS\sewer.dwg

BENCHMARKS:

BM #1: "□" on top of curb, south end of return at SW corner of 29th St. N. & Bracken. Elev. = 1396.38 NAVD88

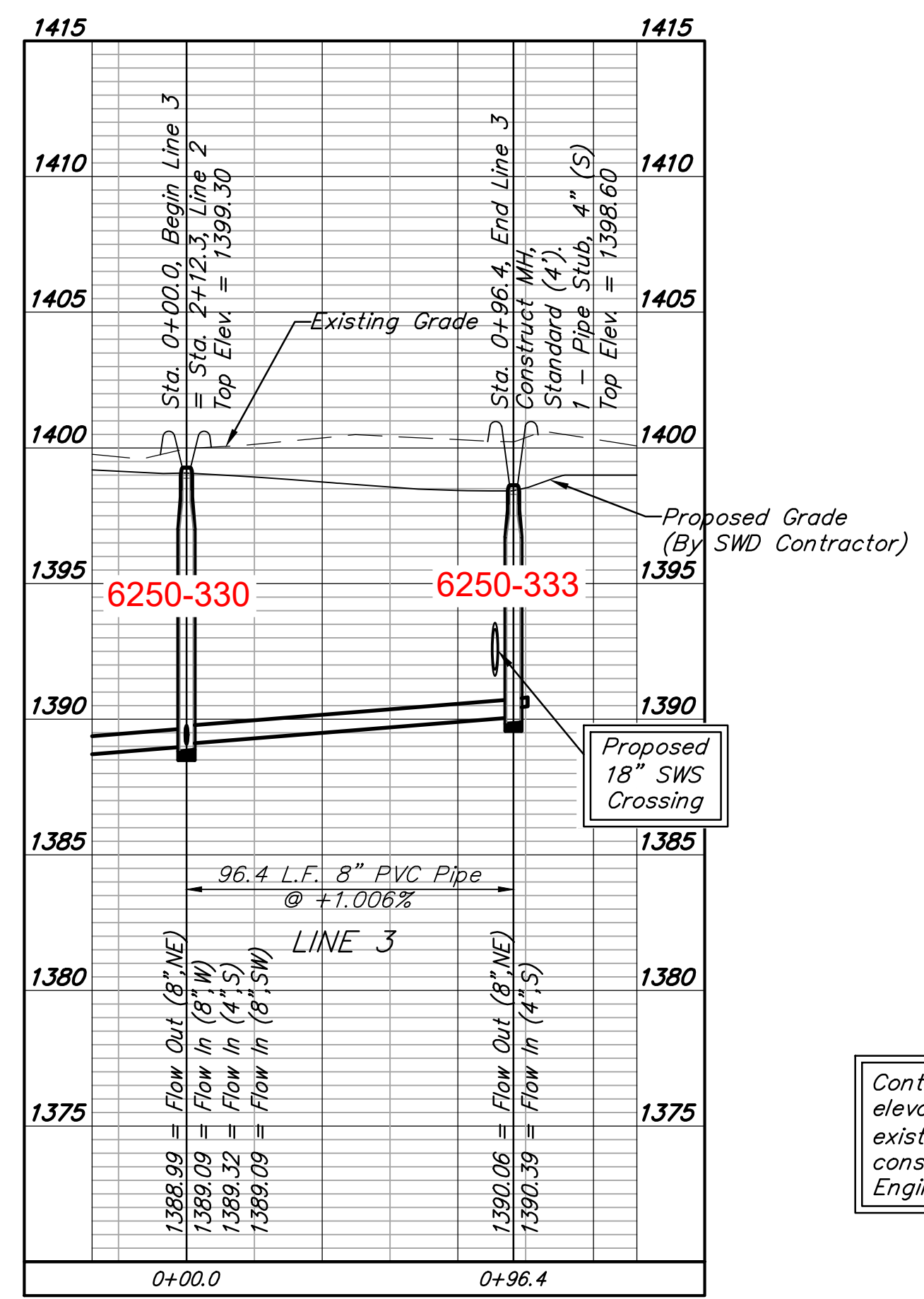
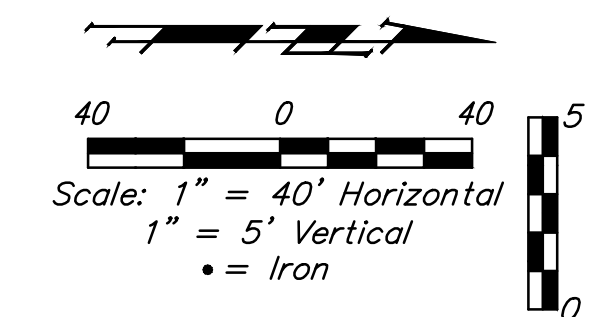
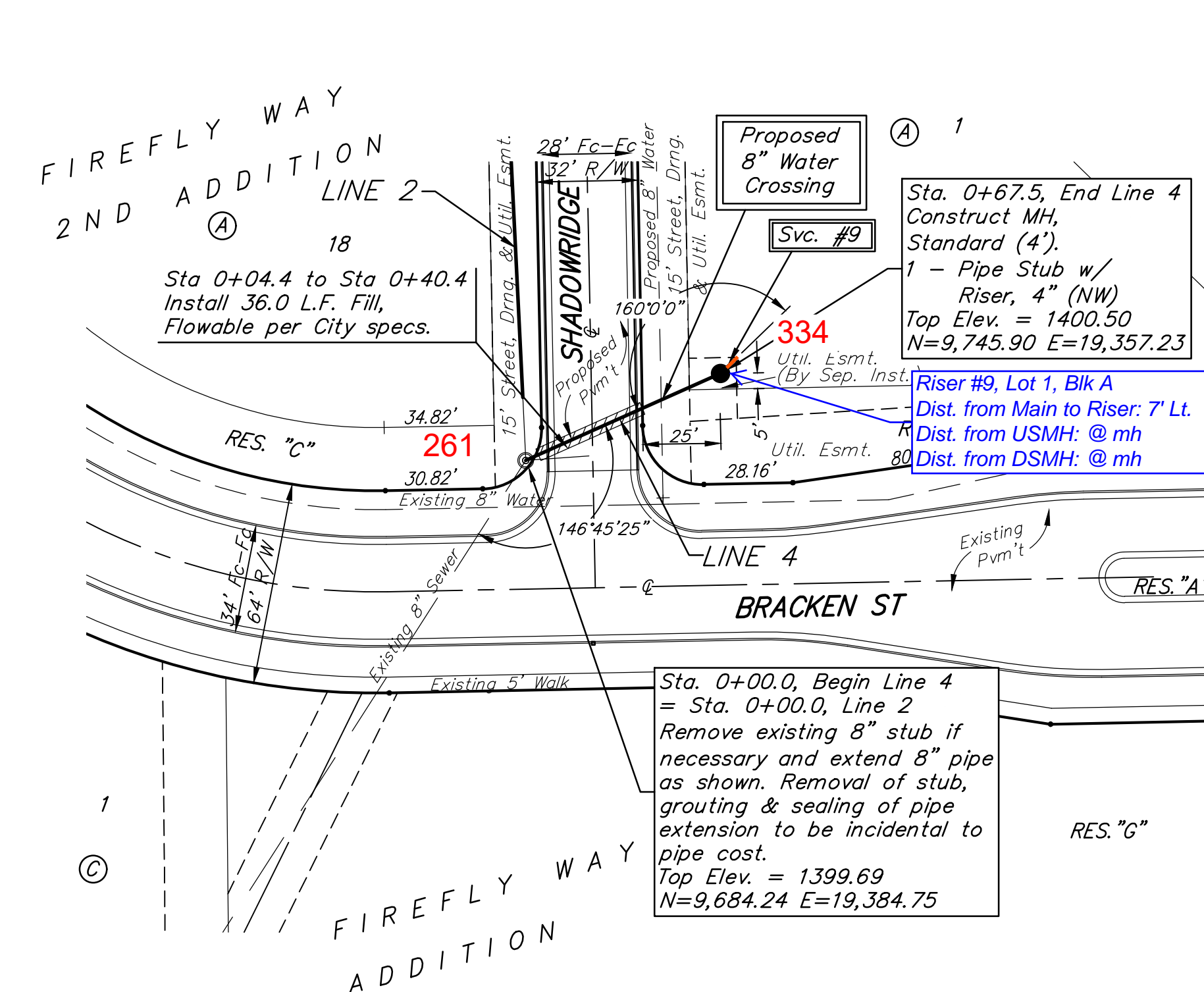
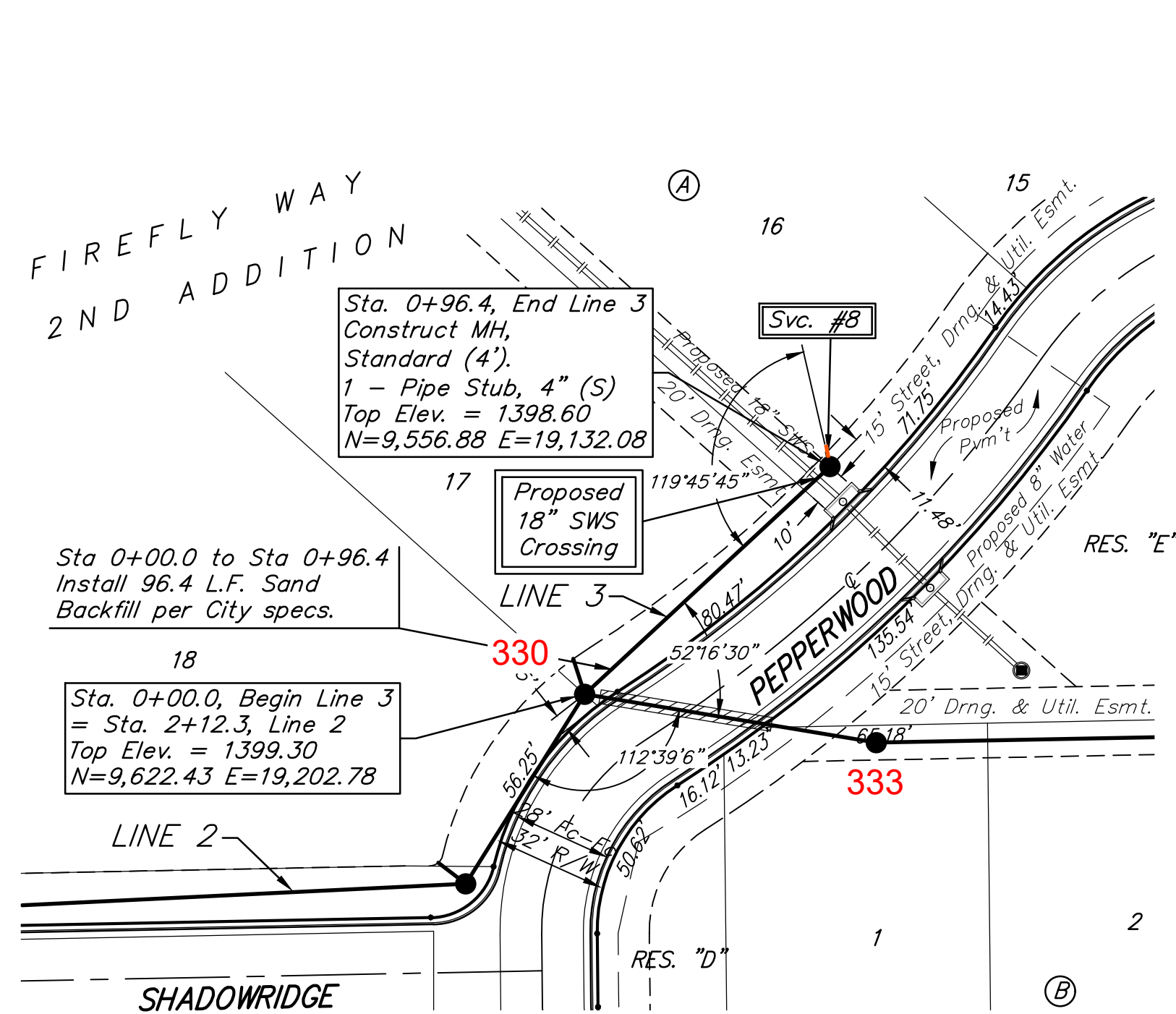
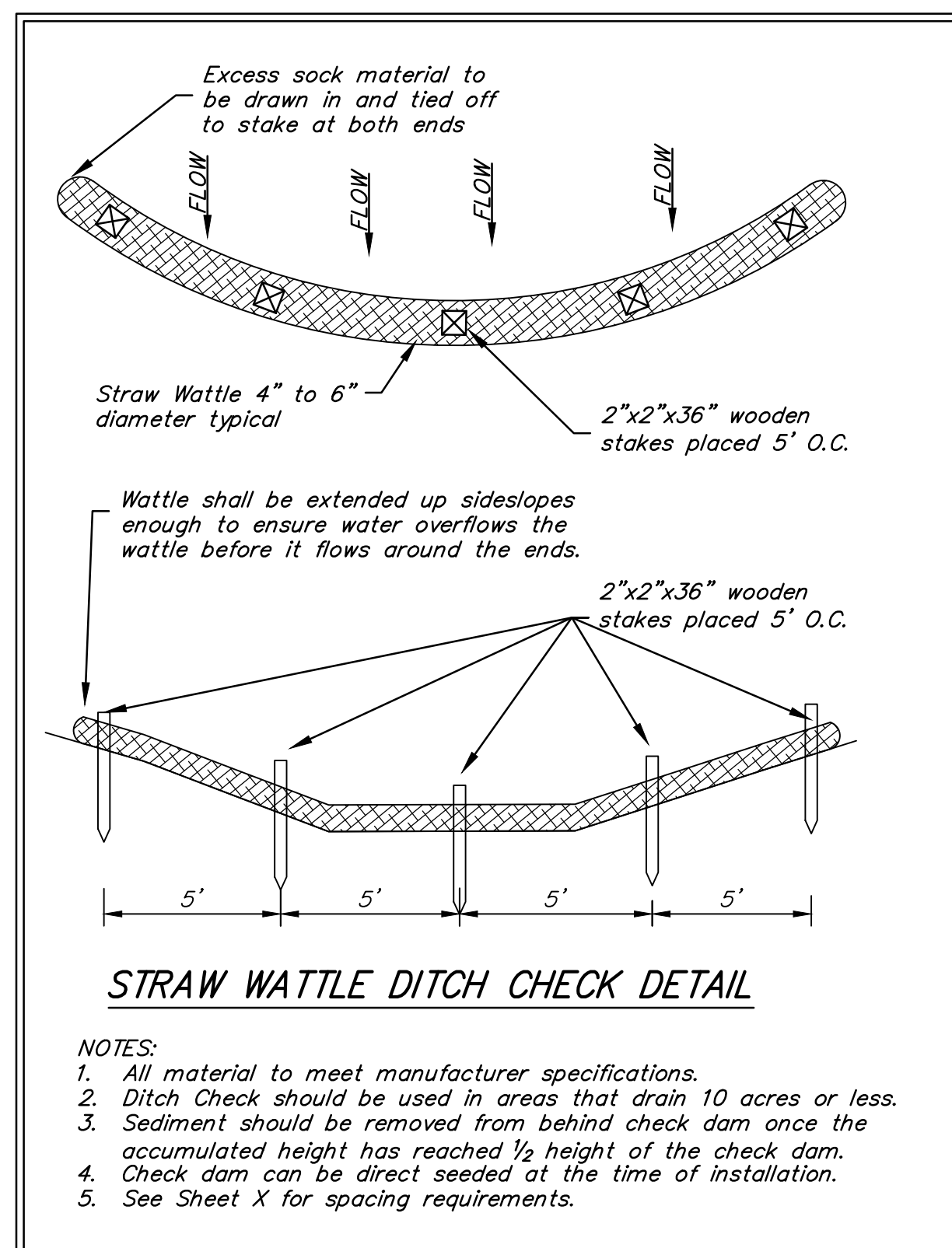
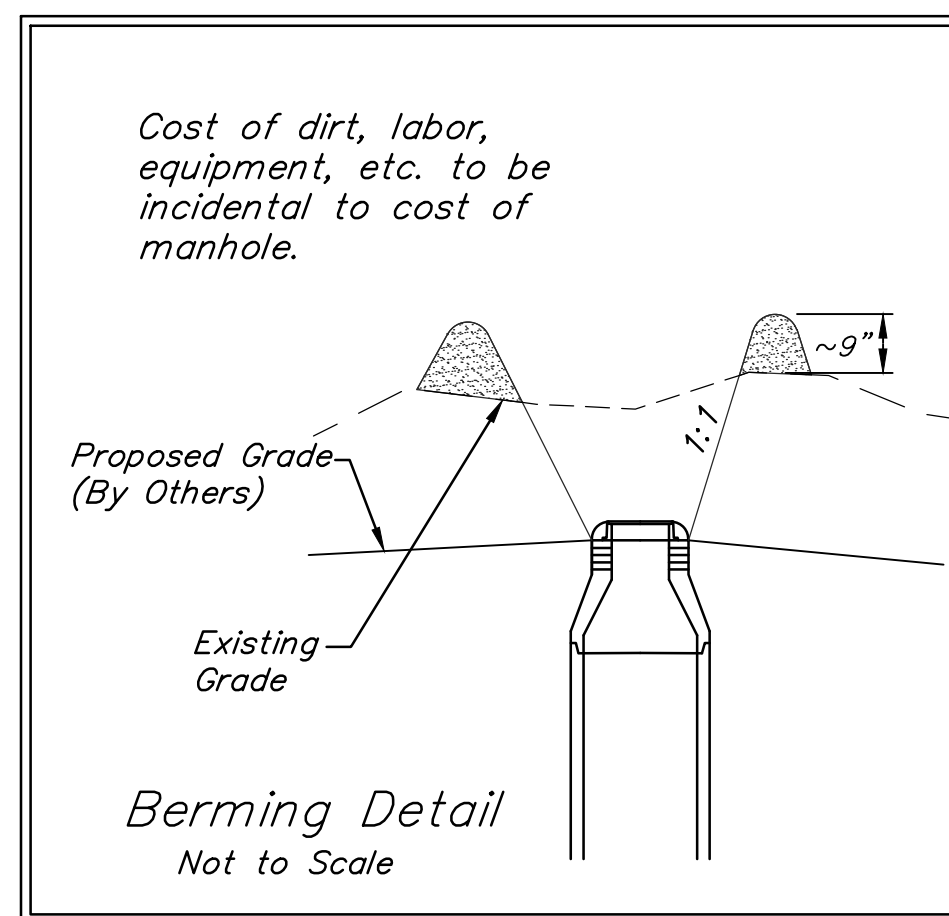
BM #2: "□" on top of curb, east side of Bracken, 285' south of 29th St. N. Elev. = 1398.91 NAVD88

BM #3: "□" on corner of curb inlet near NW corner of Lot 45, Block E, Firefly Way Addition. Elev. = 1397.03 NAVD88

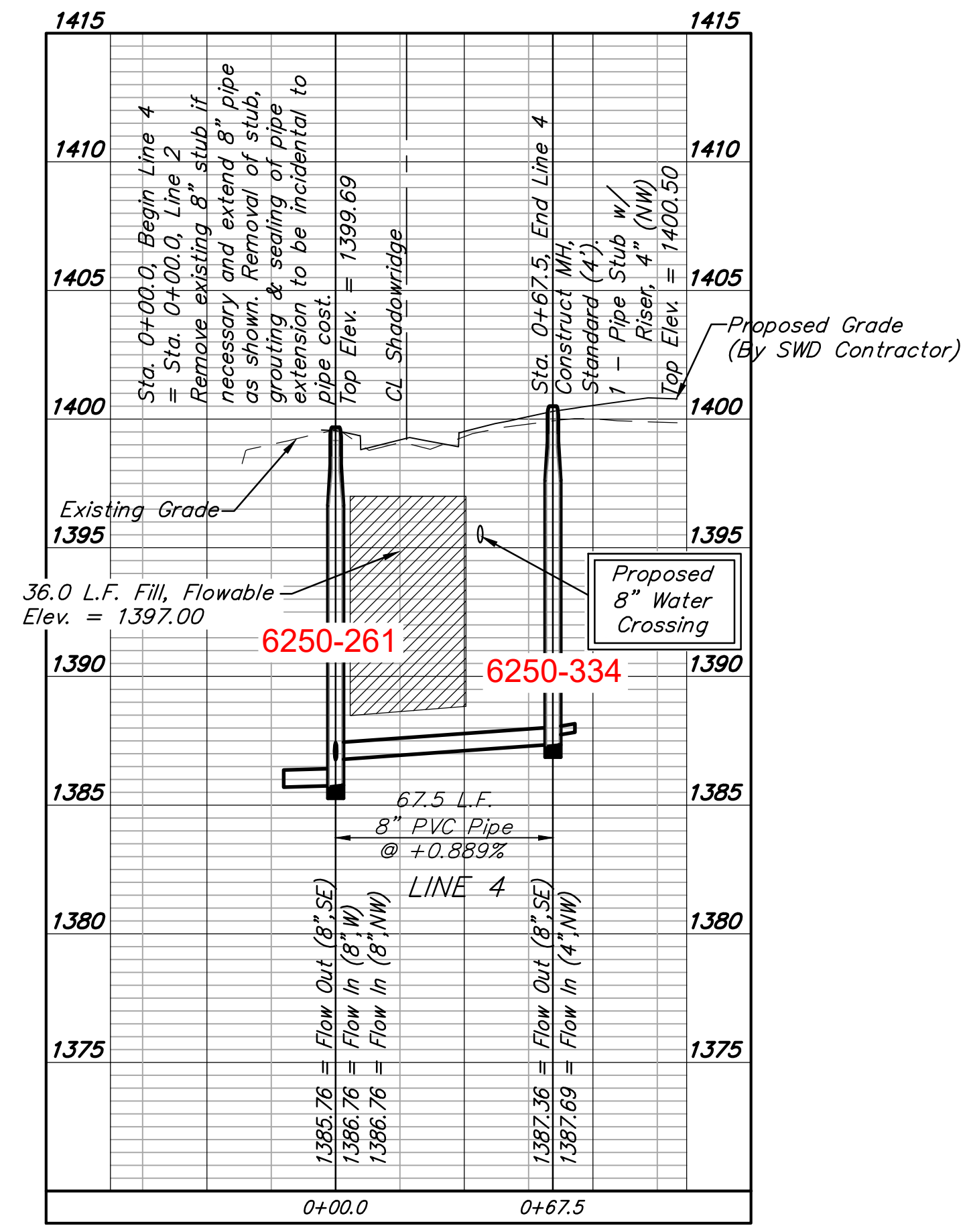
SEWER SERVICE TABLE

NUMBER	TYPE	LOCATION			FOR INFORMATION ONLY	
		LOT NO.	BLOCK NO.	LINE NO. DIRECTION	APPROXIMATE LENGTH 4" PIPE	
8	4" Stub	16	A	3	0+96.4/Lt.	4.2'
9	4" Stub w/Riser	1	A	4	0+67.5/Lt.	8.5' 7.0'

NOTE: Vertical Riser Pipe shall be extended to 2' minimum above ground water elevation and 4' maximum below proposed ground elevation.



Contractor shall verify elevation and alignment of existing 8" pipe prior to construction and notify Engineer of any discrepancy.



BAUGHMAN COMPANY
 315 Ellis St.
 Wichita, KS 67211
 316-262-7271
 BaughmanCo.com

FIREFLY WAY
 2ND ADDITION

LINES 3&4

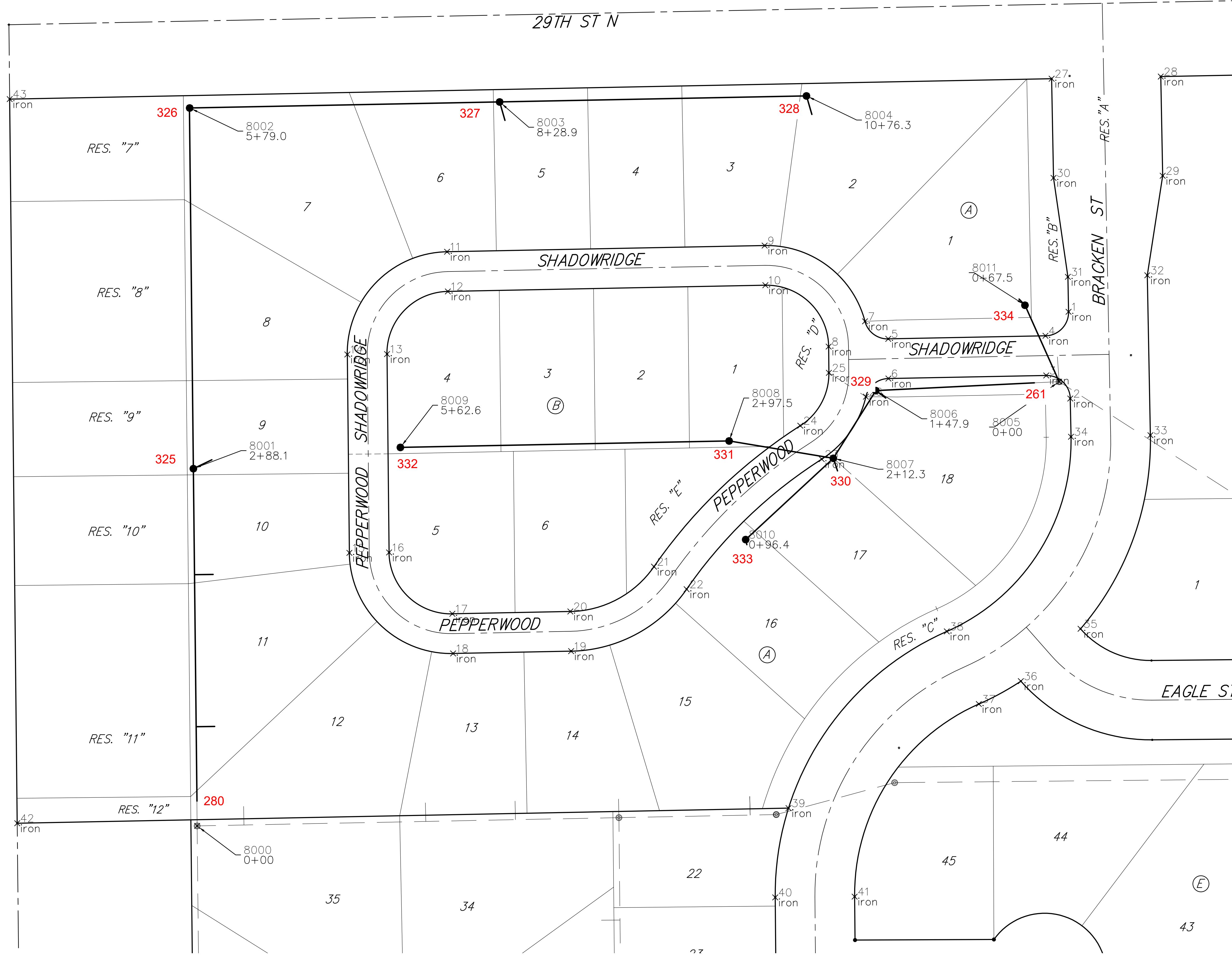
SANITARY SEWER IMPROVEMENTS

PROJECT NUMBER:
 20-09-E707

DESIGN: AEG DRAWN: TMS
 DATE: March 23, 2021

SHEET OF
4 15

File: E:\Projects\Firefly Way 2nd Addition\Engineering\Phase 1\SSS\Sewer.dwg

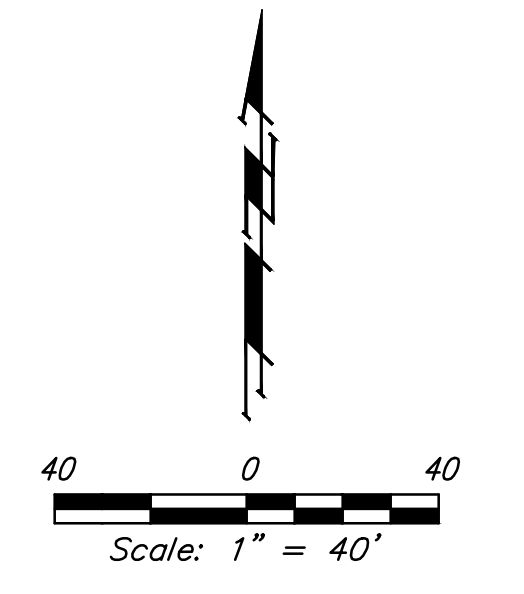


IRONS

Point Table			
Point #	Northing	Easting	Raw Description
1	9740.59	19392.34	iron
2	9670.60	19393.71	iron
3	9689.23	19374.34	iron
4	9721.22	19373.72	iron
5	9718.74	19246.99	iron
6	9686.74	19247.12	iron
7	9732.90	19228.25	iron
8	9712.53	19198.95	iron
9	9793.99	19147.35	iron
10	9762.00	19147.98	iron
11	9788.98	18891.39	iron
12	9756.99	18892.01	iron
13	9706.48	18843.00	iron
14	9706.14	18811.00	iron
15	9546.15	18812.66	iron
16	9546.48	18844.66	iron
17	9497.01	18895.63	iron
18	9465.01	18896.26	iron
19	9466.88	18991.36	iron
20	9498.87	18990.74	iron
21	9535.03	19058.15	iron
22	9516.82	19084.46	iron
23	9621.76	19193.34	iron
24	9648.72	19176.10	iron
25	9691.37	19199.17	iron
26	9672.09	19229.00	iron
27	9928.55	19378.66	iron
28	9930.27	19466.64	iron
29	9850.29	19468.21	iron
30	9848.56	19380.22	iron
31	9768.75	19391.79	iron
32	9770.00	19455.78	iron
33	9641.04	19458.30	iron
34	9639.79	19394.31	iron
35	9484.91	19401.97	iron
36	9442.70	19353.87	iron
37	9424.26	19320.03	iron
38	9482.81	19294.19	iron
39	9340.28	19166.59	iron
40	9268.31	19155.88	iron
41	9268.93	19219.88	iron
42	9328.11	18544.89	iron
43	9912.11	18538.82	iron

SANITARY SEWER

Point Table			
Point #	Northing	Easting	Raw Description
8000	9325.95	18689.92	0+00
8001	9614.06	18686.91	2+88.1
8002	9904.94	18683.92	5+79.0
8003	9909.83	18933.76	8+28.9
8004	9914.68	19181.11	10+76.3
8005	9684.24	19384.75	0+00
8006	9677.02	19237.01	1+47.9
8007	9622.43	19202.78	2+12.3
8008	9636.40	19118.74	2+97.5
8009	9631.21	18853.78	5+62.6
8010	9556.88	19132.08	0+96.4
8011	9745.90	19357.23	0+67.5




BAUGHMAN COMPANY
 315 Ellis St.
 Wichita, KS 67211
 316-262-7271
 BaughmanCo.com
COORDINATE SHEET
 SANITARY SEWER IMPROVEMENTS
 PROJECT NUMBER:
 20-09-E707
 DESIGN: DRAWN:
 DATE: March 23, 2021
 SHEET **14** OF **15**

File: E:\Projects\Firefly Way 2nd Addition\Engineering\Phase 1\SSSewer.dwg