

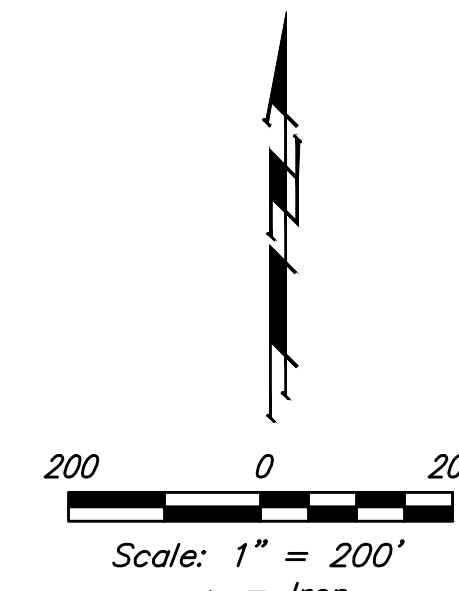
# Sanitary Sewer Improvements to serve **TURKEY CREEK 4TH ADDITION - PHASE I** CITY OF WICHITA, KANSAS

Gary Janzen, P.E. City Engineer  
Project Number: 468-2020-016809  
OCA Number: 810098

E0069  
47262620

Mies Construction - Contractor  
K. Kerns - City of Wichita, Field Project Engineer  
E. Flores - City of Wichita, Inspector  
As-built  
Stubs & Risers  
Release Date (for connection purposes only): 4/13/2021  
Completion Date:  
pdf: apr 1/12/2022

4645C  
Basin: CIS-5A



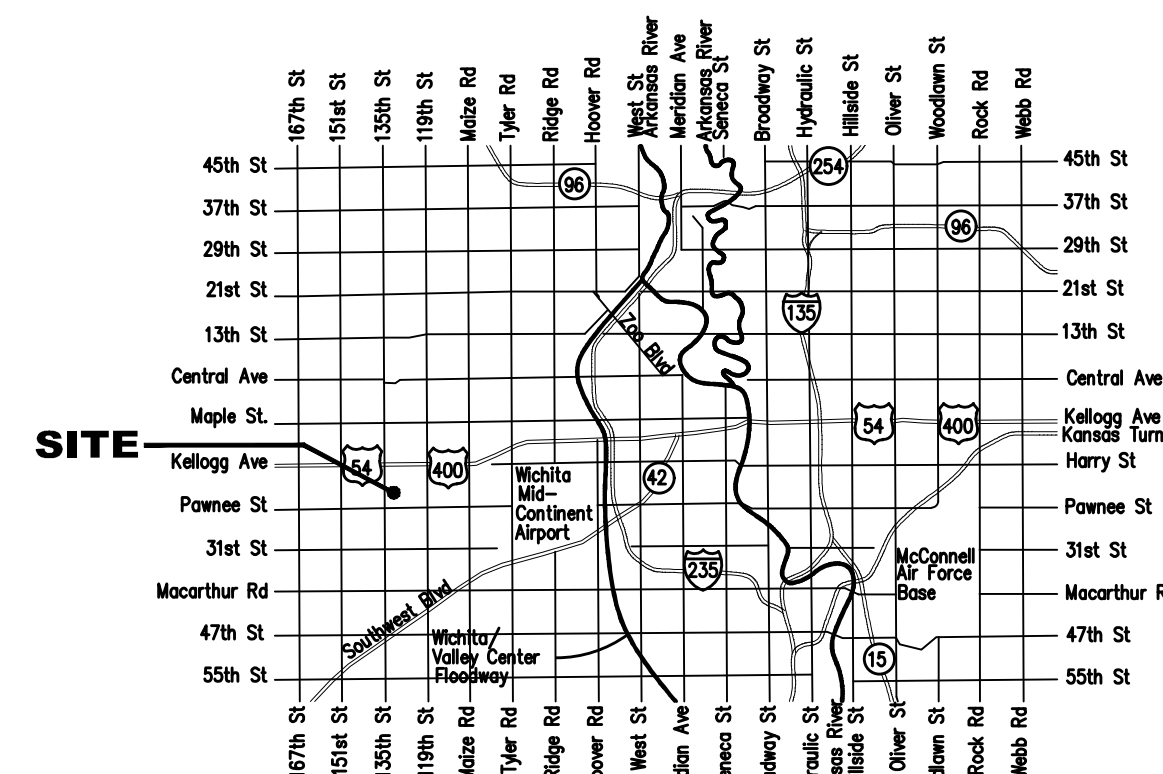
### SHEET INDEX

Title Sheet	1
Line 1	2-5
Line 2	6-7
Line 3	8-9
Erosion Control Plan	10
Erosion Control BMP Details	11-15
Standard Manhole Detail	16
Ring & Cover Detail	17
Vertical Riser Detail	18
Coordinate Sheet	19-20
Copy of Plat	21

### BENCHMARKS

135th St. W. & Pawnee  
City of Wichita Benchmark Disc,  
Northeast Corner of Concrete Base  
of High Line Pole.  
Elev. = 1359.65 NGVD29

City of Wichita Benchmark Disc,  
0.4 Mi. South of Kelllogg On  
135th St. W., West Side of  
Concrete Base for High Line  
Pole, West of K.G.&E.  
Substation, 135± South of  
Railroad Tracks On East Side of  
135th St. W.  
Elev. = 1367.77 NGVD29



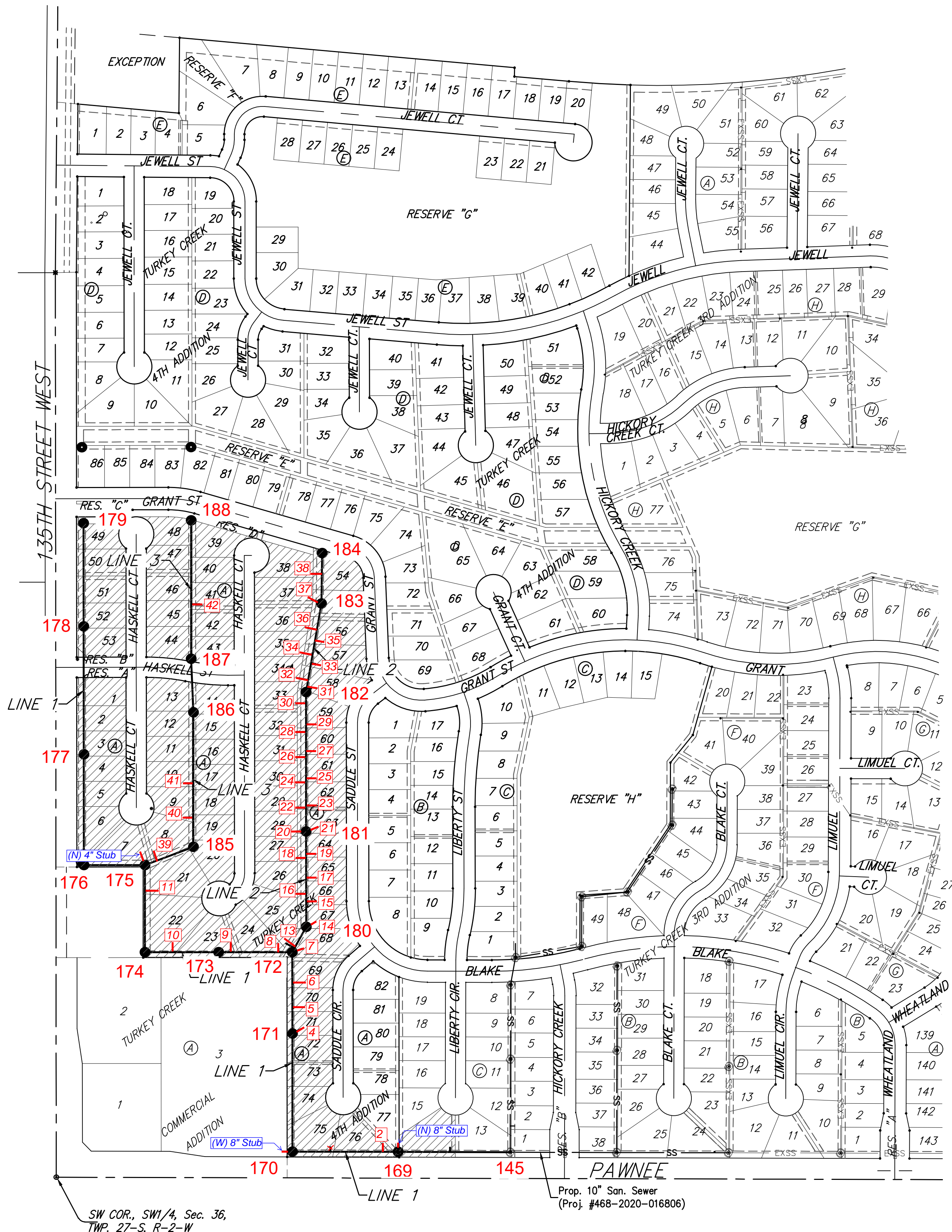
### GENERAL NOTES:

- Contractor will be required to provide notice to utility companies a minimum of seventy-two (72) hours prior to any excavation, as follows:  
  

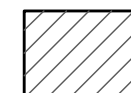
Kansas One-Call	687-2470
The Contractor must notify the following in case of an emergency:	
Cox Communications	262-4270
Kansas Gas Service	1-888-482-4950
Westar Energy	383-8650
Aquila Energy	1-800-303-0357
AT&T	268-2245
City of Wichita Water Dept.	268-4563
City of Wichita Sewer Maint.	268-4024
City of Wichita Storm Sewer Maint.	268-4090
City of Wichita Traffic Maint.	268-4034
Conoco Phillips Pipeline Co.	1-877-267-2290
Southern Star Pipeline Co.	529-6600
Kinder-Morgan Pipeline Co.	1-888-844-5658
- Utility service lines, poles, valve boxes, meters, and etcetera are to be adjusted as necessary by others prior to construction unless the plans specifically call for their adjustment by the Contractor or unless the plans specifically identify a utility to be adjusted by its owner during construction. Existing utilities and their location, as shown on the plans, represent the best information obtainable for design. The Contractor will be required to work around existing utilities within the right-of-way which do not conflict with proposed construction.
- Rubble from the removal of miscellaneous structures and excess excavation which is to be wasted shall be disposed of on sites to be provided by the Contractor. These sites shall be approved by the Engineer as to suitability, appearance and site location. Locations, in the opinion of the Engineer, that will leave an unsightly appearance will not be approved. All disposal sites must be approved by the Kansas Department of Health and Environment. Material either stockpiled or disposed of in a flood plain would require a Kansas State Board of Agriculture permit. Any material dumped in waters of the United States or wetlands is subject to U.S. Corps. of Engineers permitting regulations. Any material buried or stockpiled beyond approved construction limits would require additional archaeological investigations unless buried in a previously approved borrow location.
- Trees and shrubs in public right-of-way which are in direct conflict with proposed new construction shall be removed by the Contractor with the Engineer's approval. Trees and shrubs which are not in direct conflict with proposed new construction shall be saved and protected from damage.
- The Contractor shall give all property owners and/or tenants of developed property abutting the construction of this project a minimum of ten (10) days notice prior to start of construction.
- The Contractor shall be responsible for preserving property irons. The Contractor will be required to re-establish any property irons which are damaged or destroyed by his construction operations. Such irons shall be re-established by a licensed land surveyor in accordance with state laws.
- All existing and proposed erosion control measures including silt fencing, erosion control mat, straw bales, inlet barriers, and const. entrance shall be maintained throughout construction by the contractor and until project is accepted by the City of Wichita. The on-site engineer shall complete weekly reports on the status of erosion control measures. The contractor shall be required to comply with maintenance and/or replacement of erosion control measures as determined by the on-site engineer until project is accepted by City of Wichita. Maintenance and/or replacement of erosion control measures to be paid by L.S. bid item "Maintain Existing BMP's."
- All excess excavation shall remain on-site and shall be stockpiled or spread at a location determined by the engineer.
- The Contractor shall be responsible for maintaining continuous flow of sewage through construction. Contractor's proposed method for maintaining sewage flow shall be approved by the Engineer. Cost of maintaining flow of sewage through construction will not be paid for directly and this cost shall be considered as subsidiary to the other pay items of work.
- All areas disturbed during construction shall be seeded as follows (Temporary Seeding):  
  

Seed: Rye grass (PLS)---5 lbs./1000 Sq. Ft.
---

All costs associated with seeding shall be included in bid item "Seeding". All seeding operations shall conform to City of Wichita Standard Specifications.
- The Developer for this project is Paul Kelsey  
716 N. 119th St. #112, Wichita, KS 67212  
PH# (316)722-1077 email paul.kelsey@gmail.com



BENEFIT DISTRICT



Baughman Company, P.A. 315 Ellis St. Wichita, KS 67211 P 316-262-7271 F 316-262-0148  
ENGINEERING | SURVEYING | PLANNING | LANDSCAPE ARCHITECTURE



**Sanitary Sewer Riser Location Table**

Project Name: Turkey Creek 4th Addn SS phase 1

Project Location: N of Pawnee, E of 135th St W

Project No.: 468-2020-016809

OCA No.: 810098

Contractor: Mies

Inspector: Eddie Flores

Riser No.	Line No.	Station	Distance from Main to Riser (Lt./Rt.)	Distance from	
				Upstream MH	Downstream MH
1	1	3+20	15' RT	302.0	0.0
2	1	3+64	5' RT	258.0	44.0
3	1	6+22	10' RT	MH Stub	302.0
4	1	9+59	10' RT	233.0	MH Stub
5	1	10+32	5' RT	160.0	73.0
6	1	11+00	5' RT	92.0	141.0
7	1	11+92	10' RT	MH Stub	232.0
8	1	12+31	3'RT	171.0	39.0
9	1	13+68	3'RT	34.0	176.0
10	1	15+34	4' RT	79.0	132.0
11	1	17+89	15'RT	73.0	176.0
12	1	18+62	15'RT	MH Stub	249.0
13	2	0+13	30'LT	69.0	13.0
14	2	0+82	10'RT	MH Stub	82.0
15	2	1+55	5'RT	200.0	73.0
16	2	1+77	30'LT	178.0	95.0
17	2	2+23	5'RT	132.0	141.0
18	2	2+79	30'LT	76.0	197.0
19	2	2+91	5'RT	64.0	209.0
20	2	3+55	30'LT	MH Stub	273.0
21	2	3+55	10'RT	MH Stub	273.0
22	2	4+23	30'LT	330.0	68.0
23	2	4+29	5'RT	324.0	74.0
24	2	4+95	30'LT	258.0	140.0
25	2	5+07	5'RT	246.0	152.0
26	2	5+67	30'LT	186.0	212.0
27	2	5+85	5'RT	168.0	230.0
28	2	6+39	30'LT	114.0	284.0
29	2	6+61	5'RT	92.0	306.0
30	2	7+21	30'LT	32.0	366.0
31	2	7+66	5'RT	244.0	13.0
32	2	7+88	30'LT	222.0	35.0
33	2	8+37	5'RT	173.0	84.0

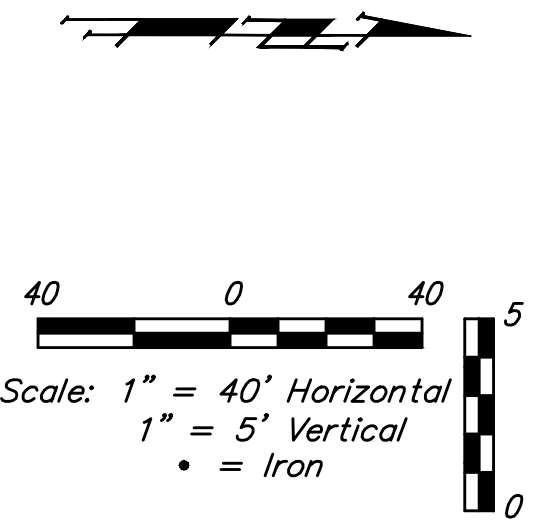
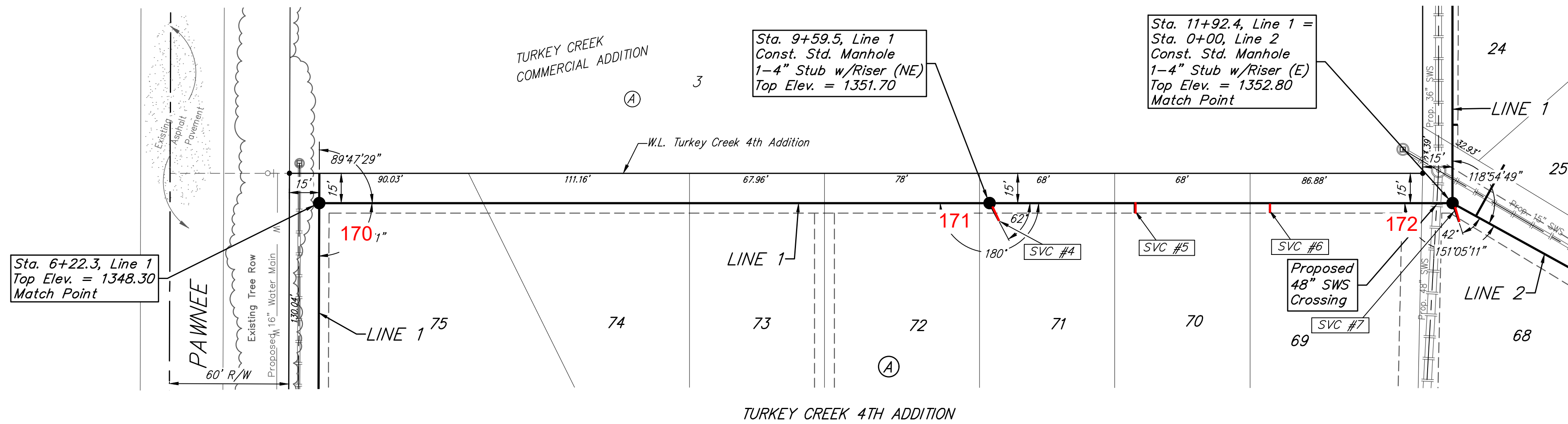
**Sanitary Sewer Riser Location Table**

34	2	8+61	30'LT	149.0	108.0
35	2	9+03	5'RT	107.0	150.0
36	2	9+35	30'LT	75.0	182.0
37	2	10+10	32'LT	MH Stub	257.0
38	2	10+95	30'LT	59.0	85.0
39	3	0+37	9'LT	111.0	37.0
40	3	2+32	13'LT	300.0	84.0
41	3	3+30	13'LT	202.0	182.0
42	3	8+42	13'RT	239.0	157.0



**BENCHMARKS:**  
 135th St. W. & Pawnee  
 City of Wichita Benchmark Disc,  
 Northeast Corner of Intersection  
 On SW Corner of Concrete Base  
 of High Line Pole.  
 Elev. = 1359.65 NGVD29

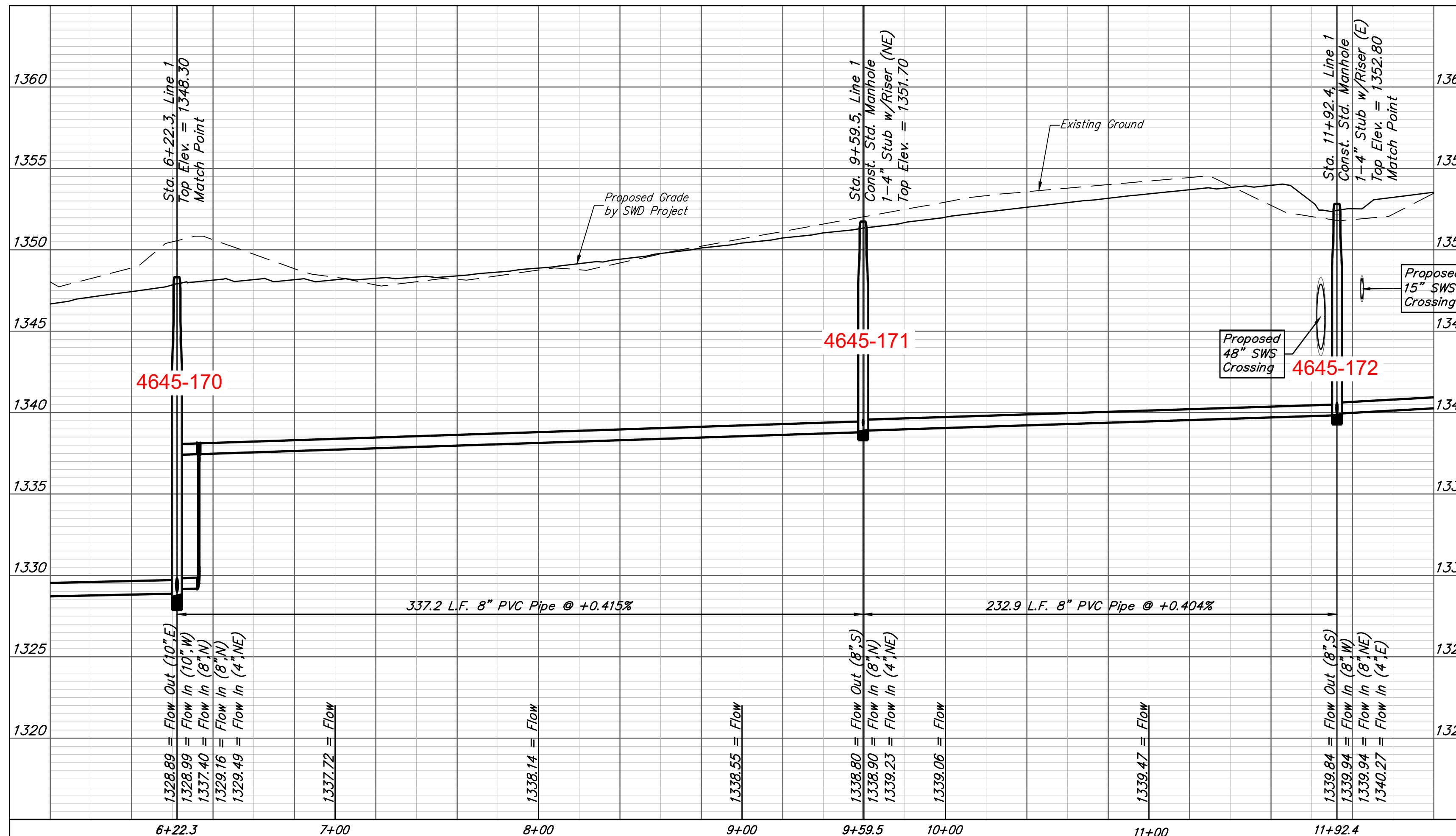
City of Wichita Benchmark Disc,  
 0.4 Mi. South of Kellogg On  
 135th St. W., West Side of  
 Concrete Base for High Line  
 Pole, West of K.G.&E.  
 Substation, 135± South of  
 Railroad Tracks On East Side of  
 135th St. W.  
 Elev. = 1367.77 NGVD29



SEWER SERVICE TABLE

NUMBER	TYPE	LOCATION				FOR INFORMATION ONLY		Distance from		
		LOT NO.	BLOCK NO.	LINE NO.	STATION/DIRECTION	APPROXIMATE LENGTH 4" PIPE	VERTICAL	HORIZONTAL	Distance from Main to Riser (Lt./Rt.)	Upstream MH
4	4" Stub	71	A	1	9+59.5/Rt.	8.2'	10'	10' Rt.	233'	@ mh
5	8" X 4" Tee	70	A	1	10+32.5/Rt.	8.8'	5'	5' Rt.	160'	73'
6	8" X 4" Tee	69	A	1	11+00.5/Rt.	9.3'	5'	5' Rt.	92'	141'
7	4" Stub	68	A	1	11+92.4/Rt.	9.9'	10'	10' Rt.	@ mh	73'

NOTE: The Vertical Riser Pipe shall be extended to 2' minimum above ground water elevation and 4' maximum below proposed ground elevation.



**Baughman** Turkey Creek 4th Addition - Phase I  
**LINE 1**  
 Sanitary Sewer Improvements

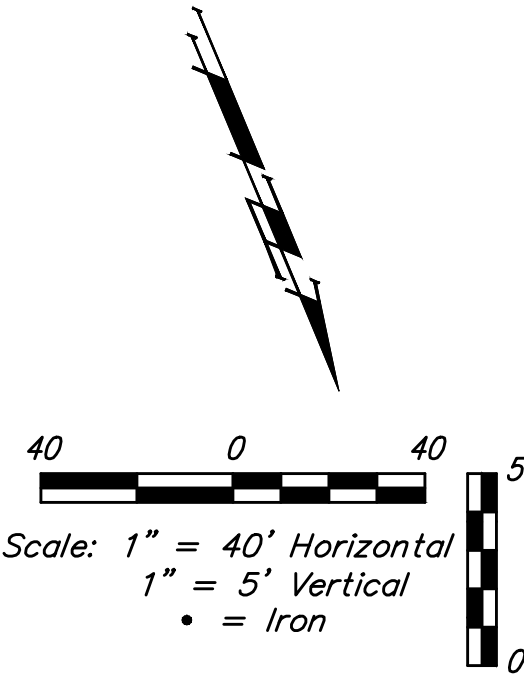
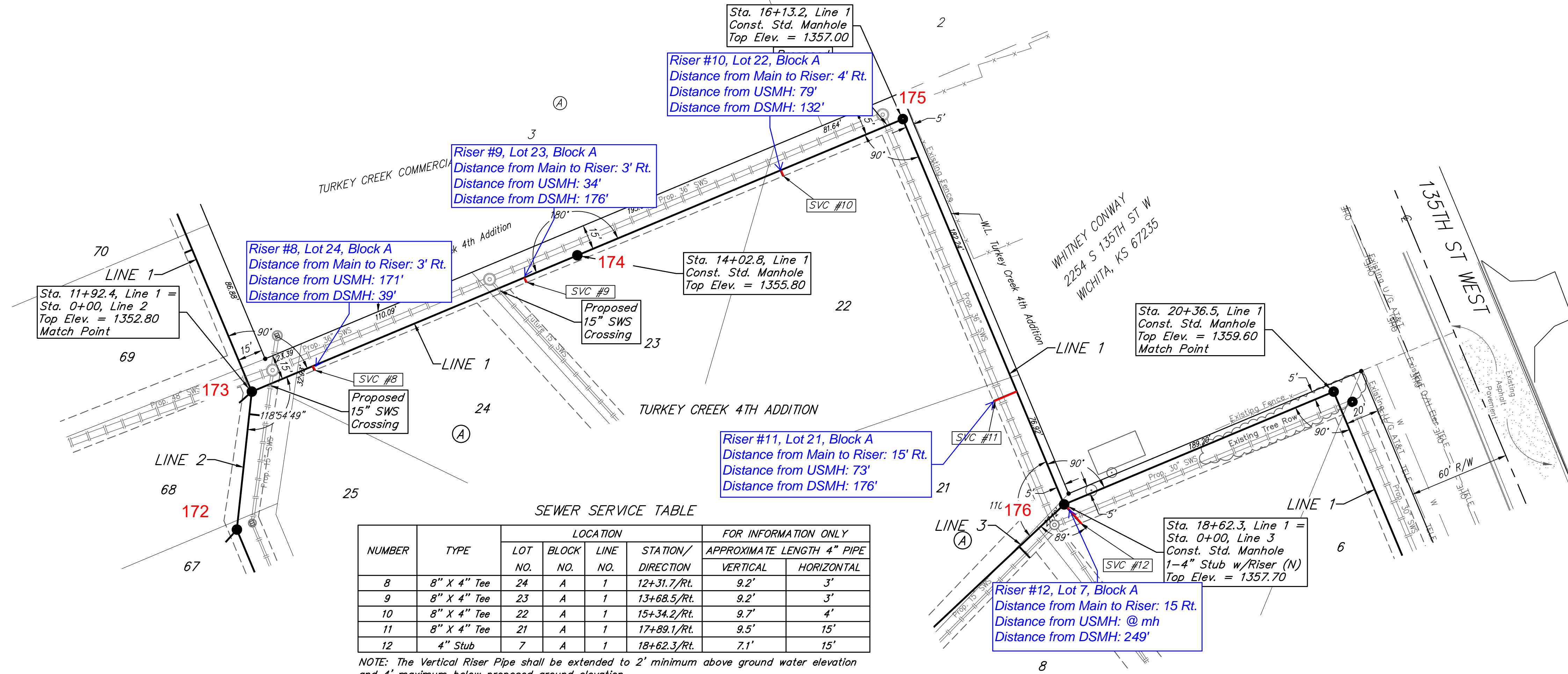
Baughman Company, P.A. 315 Ellis St. Wichita, KS 67211 P 316-262-7271 F 316-262-0149  
 ENGINEERING | SURVEYING | PLANNING | LANDSCAPE ARCHITECTURE

PROJECT NUMBER: 468-2020-016809 DESIGN: DMV DRAWN: JAK  
 APPROVED: [Signature] DATE: 9/10/2020  
 REVISIONS: SCALE: Noted SHEET: 3 OF 21

E:\Projects\Turkey Creek 4th - Engineering\Phase 1\SS\_20-01-E455\SS PLANS.dwg

**BENCHMARKS:**  
 135th St. W. & Pawnee  
 City of Wichita Benchmark Disc,  
 Northeast Corner of Concrete Base  
 On SW Corner of Concrete Base  
 of High Line Pole.  
 Elev. = 1359.65 NGVD29

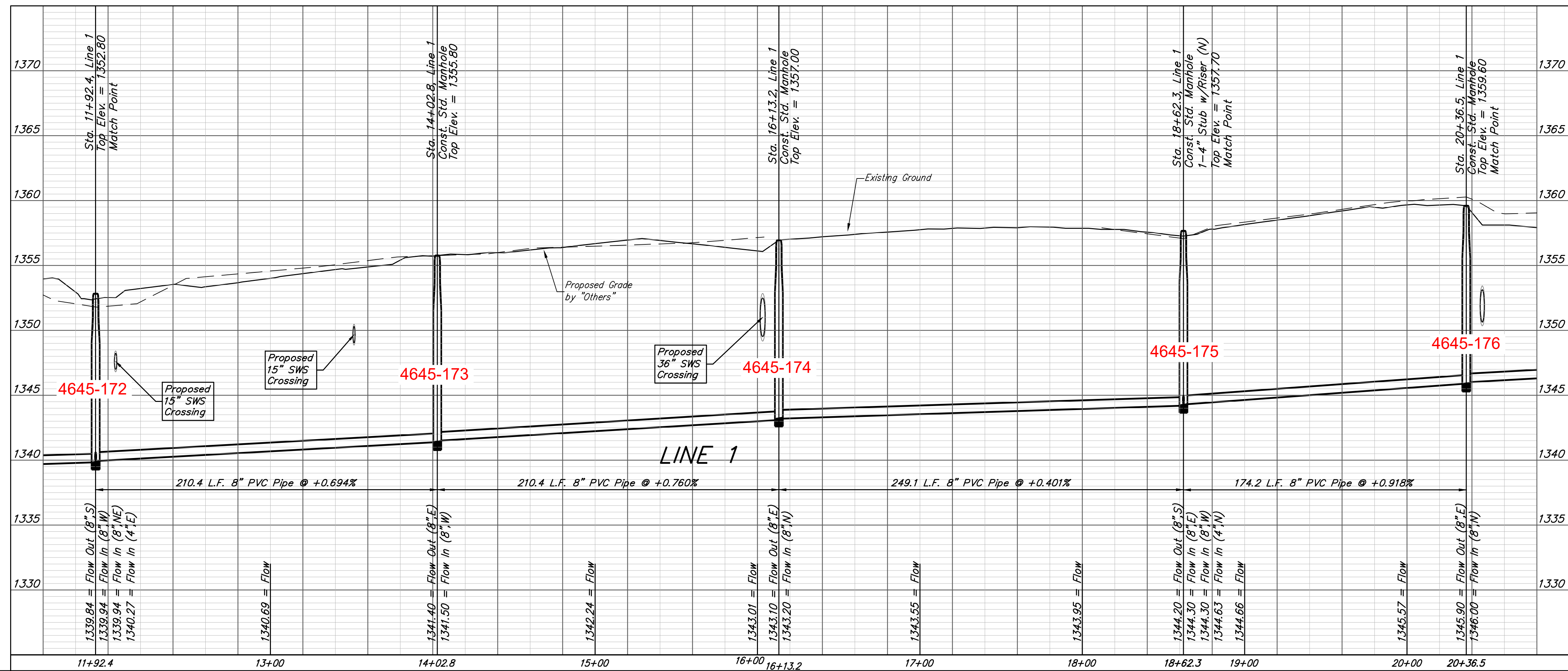
City of Wichita Benchmark Disc,  
 0.4 Mi. South of Kellogg On  
 135th St. W., West Side of  
 Concrete Base for High Line  
 Pole, West of K.G.&E.  
 Substation, 135± South of  
 Railroad Tracks On East Side of  
 135th St. W.  
 Elev. = 1367.77 NGVD29



**SEWER SERVICE TABLE**

NUMBER	TYPE	LOCATION				FOR INFORMATION ONLY	
		LOT NO.	BLOCK NO.	LINE NO.	STATION/DIRECTION	APPROXIMATE LENGTH 4" PIPE	
						VERTICAL	HORIZONTAL
8	8" X 4" Tee	24	A	1	12+31.7/Rt.	9.2'	3'
9	8" X 4" Tee	23	A	1	13+68.5/Rt.	9.2'	3'
10	8" X 4" Tee	22	A	1	15+34.2/Rt.	9.7'	4'
11	8" X 4" Tee	21	A	1	17+89.1/Rt.	9.5'	15'
12	4" Stub	7	A	1	18+62.3/Rt.	7.1'	15'

NOTE: The Vertical Riser Pipe shall be extended to 2' minimum above ground water elevation and 4' maximum below proposed ground elevation.



**Baughman** Turkey Creek 4th Addition - Phase I  
**LINE 1**  
 Sanitary Sewer Improvements

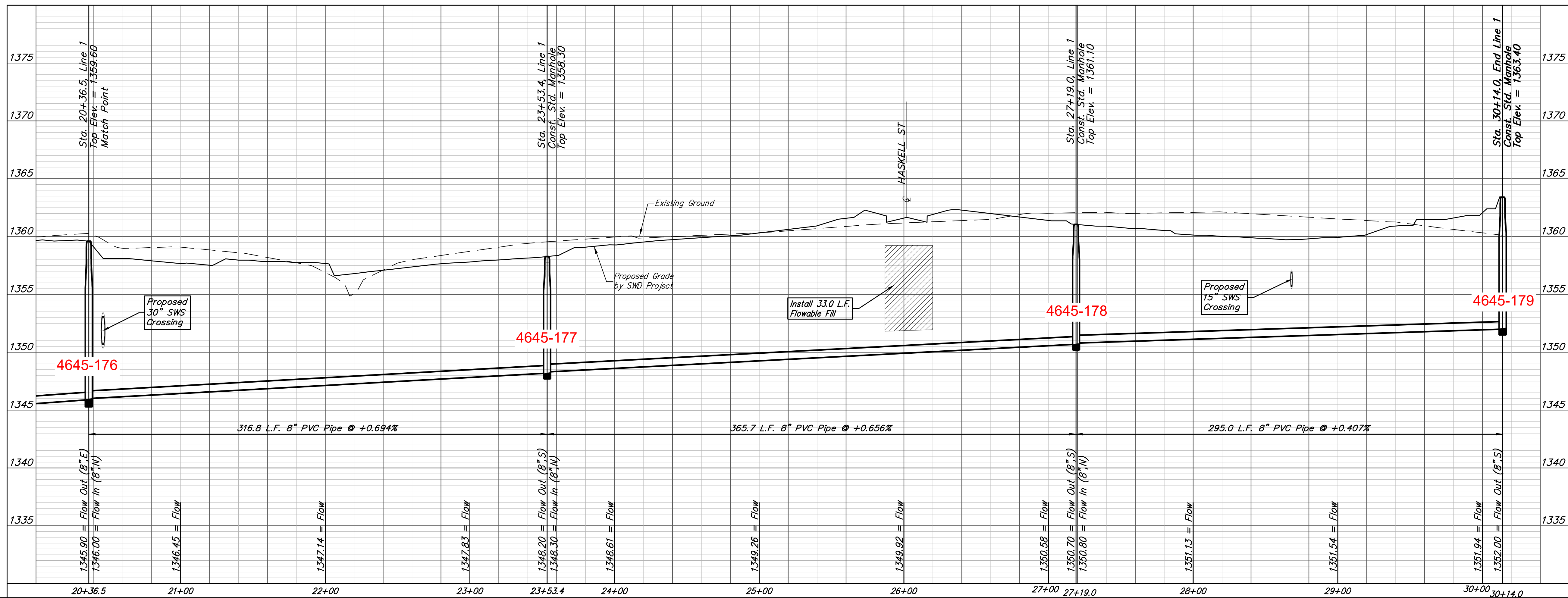
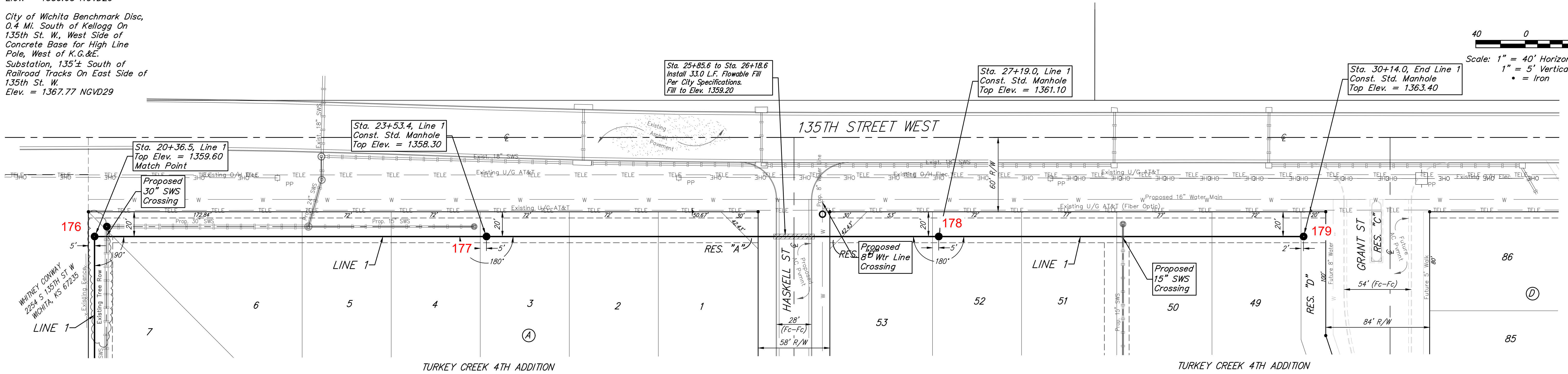
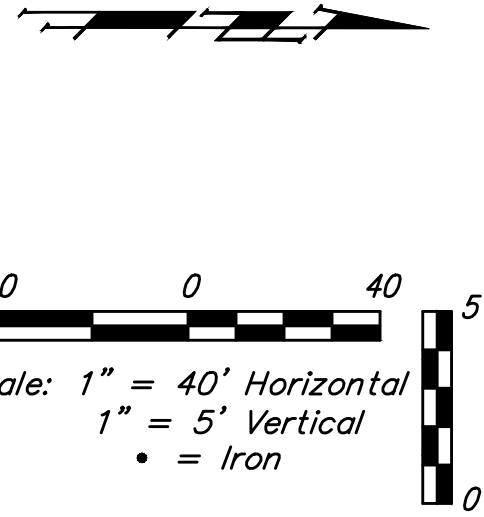
Baughman Company, P.A. 315 Ellis St. Wichita, KS 67211 P 316-262-7271 F 316-262-0149  
 ENGINEERING | SURVEYING | PLANNING | LANDSCAPE ARCHITECTURE

PROJECT NUMBER: 468-2020-016809 DESIGN: DMV DRAWN: JAK  
 APPROVED: DATE: 9/10/2020  
 REVISIONS: SCALE: Noted SHEET: 4 OF 21

E:\Projects\Turkey Creek 4th\Engineering\Phase I\SS\_20-01-4655\SS PLANS.dwg

**BENCHMARKS:**  
 135th St. W. & Pawnee  
 City of Wichita Benchmark Disc,  
 Northeast Corner of Intersection  
 On SW Corner of Concrete Base  
 of High Line Pole.  
 Elev. = 1359.65 NGVD29

City of Wichita Benchmark Disc,  
 0.4 Mi. South of Kellogg On  
 135th St. W., West Side of  
 Concrete Base for High Line  
 Pole, West of K.G.&E.  
 Substation, 135± South of  
 Railroad Tracks On East Side of  
 135th St. W.  
 Elev. = 1367.77 NGVD29



**Baughman** Turkey Creek 4th Addition - Phase I  
**LINE 1**  
 Sanitary Sewer Improvements

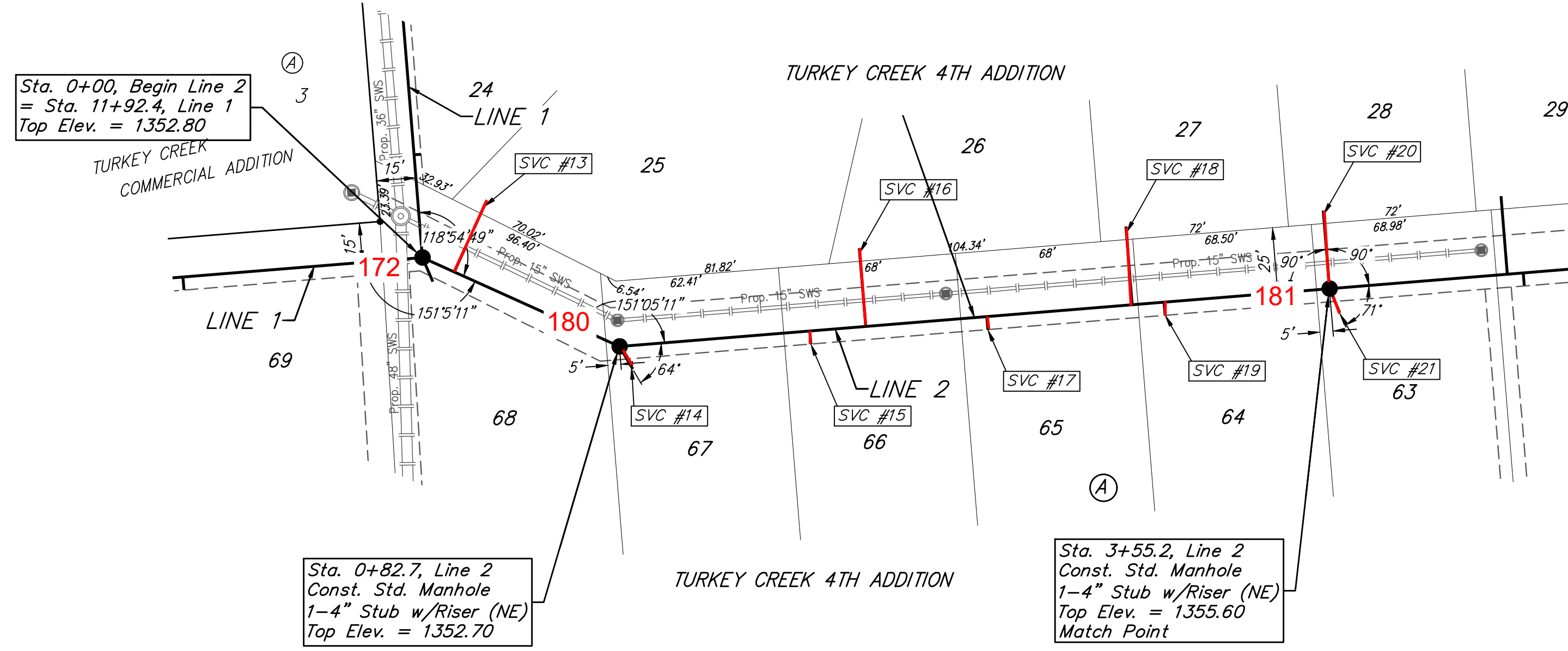
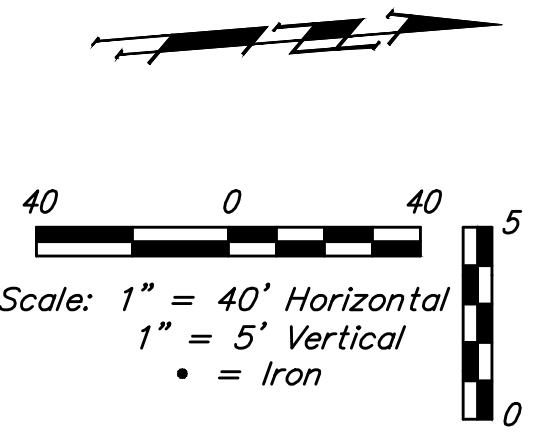
Baughman Company, P.A. 315 Ellis St. Wichita, KS 67211 P 316-262-7271 F 316-262-0149  
 ENGINEERING | SURVEYING | PLANNING | LANDSCAPE ARCHITECTURE

PROJECT NUMBER: 468-2020-016809 DESIGN: DMV DRAWN: JAK  
 APPROVED: DATE: 9/10/2020  
 REVISIONS: SCALE: Noted SHEET: 5 OF 21

E:\Projects\Turkey Creek 4th\Engineering\Phase I\SS\_20-01-E455\SS PLANS.dwg

**BENCHMARKS:**  
 135th St. W. & Pawnee  
 City of Wichita Benchmark Disc,  
 Northeast Corner of Intersection  
 On SW Corner of Concrete Base  
 of High Line Pole.  
 Elev. = 1359.65 NGVD29

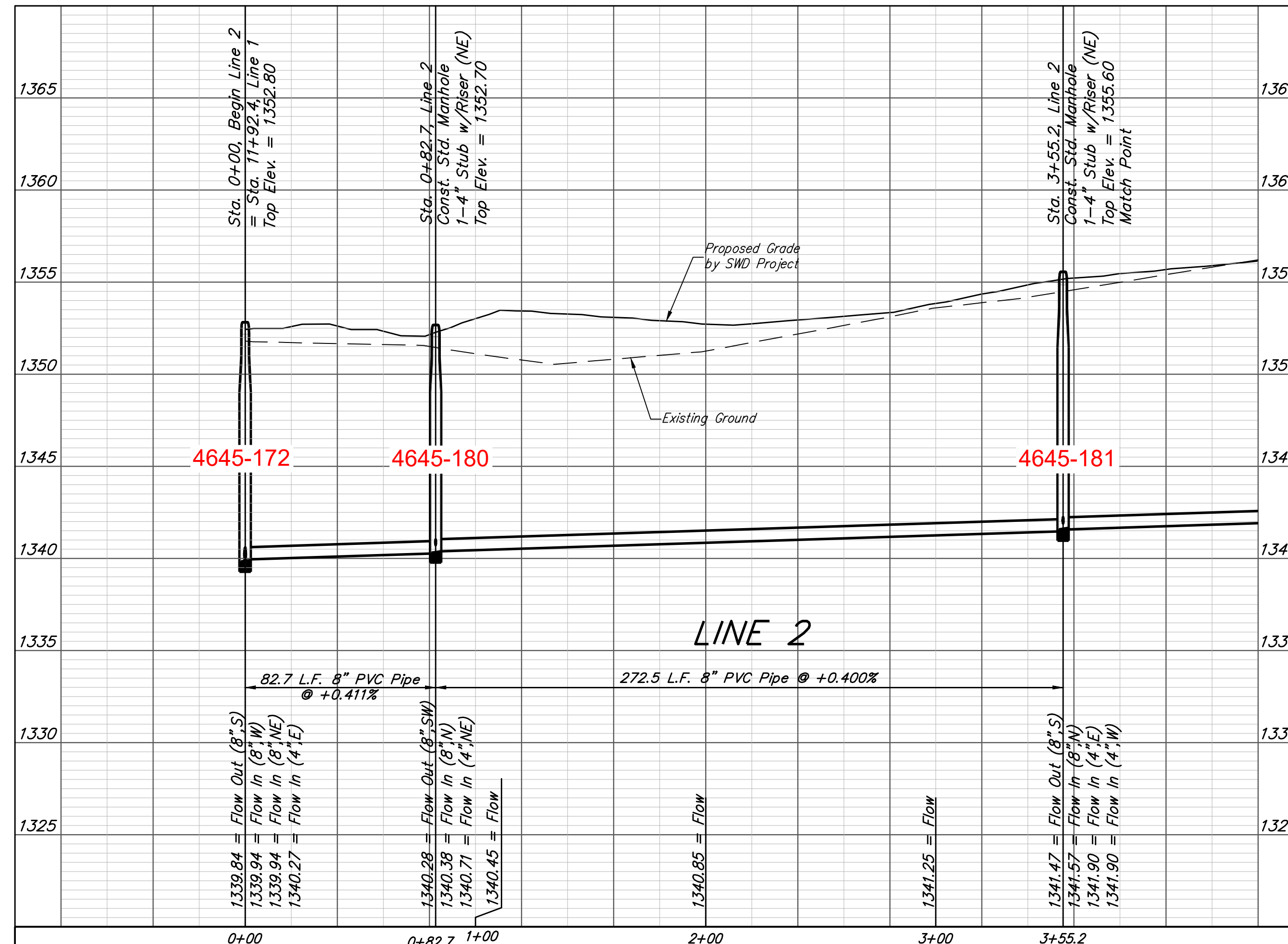
City of Wichita Benchmark Disc,  
 0.4 Mi. South of Kellogg On  
 135th St. W., West Side of  
 Concrete Base for High Line  
 Pole, West of K.G.&E.  
 Substation, 135± South of  
 Railroad Tracks On East Side of  
 135th St. W.  
 Elev. = 1367.77 NGVD29



SEWER SERVICE TABLE

Distance from Main to Riser (L/L/Rt.)	Distance from		NUMBER	TYPE	LOCATION				FOR INFORMATION ONLY	
	Upstream MH	Downstream MH			LOT NO.	BLOCK NO.	LINE NO.	STATION/DIRECTION	APPROXIMATE LENGTH 4" PIPE	VERTICAL
30' Lt.	69'	13'	13	8" X 4" Tee	25	A	3	0+13.4/Lt.	10.1'	30'
10' Rt.	@ mh	82'	14	4" Stub	67	A	3	0+82.7/Rt.	7.9'	10'
5' Rt.	200'	73'	15	8" X 4" Tee	66	A	3	1+55.7/Rt.	8.5'	5'
30' Lt.	178'	95'	16	8" X 4" Tee	26	A	3	1+77.2/Lt.	10.2'	30'
5' Rt.	132'	141'	17	8" X 4" Tee	65	A	3	2+23.7/Rt.	8.1'	5'
30' Lt.	76'	197'	18	8" X 4" Tee	27	A	3	2+79.5/Lt.	10.4'	30'
5' Rt.	64'	209'	19	8" X 4" Tee	64	A	3	2+91.7/Rt.	8.7'	5'
30' Lt.	@ mh	273'	20	4" Stub	28	A	3	3+55.2/Lt.	9.1'	30'
10' Rt.	@ mh	273'	21	4" Stub	63	A	3	3+55.2/Rt.	9.5'	10'

NOTE: The Vertical Riser Pipe shall be extended to 2' minimum above ground water elevation and 4' maximum below proposed ground elevation.



**Baughman** Turkey Creek 4th Addition - Phase I  
**LINE 2**  
 Sanitary Sewer Improvements

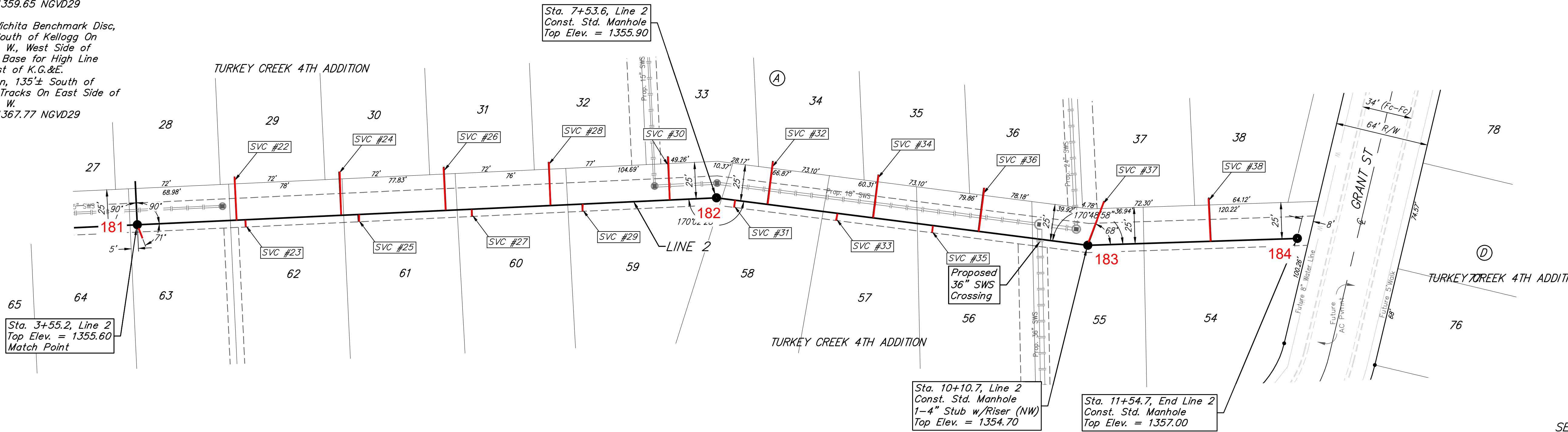
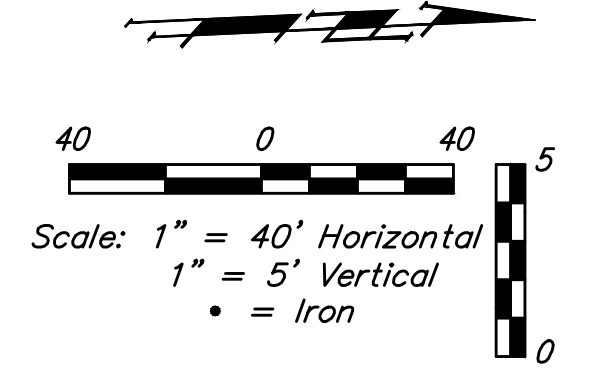
Baughman Company, P.A. 315 Ellis St. Wichita, KS 67211 P 316-262-7271 F 316-262-0149  
 ENGINEERING | SURVEYING | PLANNING | LANDSCAPE ARCHITECTURE

PROJECT NUMBER: 468-2020-016809 DESIGN: DMV DRAWN: JAK  
 APPROVED: DATE: 9/10/2020  
 REVISIONS: SCALE: Noted SHEET: 6 OF 21

E:\Projects\Turkey Creek 4th\Engineering\Phase I\SS\_20-01-E455\SS PLANS.dwg

**BENCHMARKS:**  
 135th St. W. & Pawnee  
 City of Wichita Benchmark Disc,  
 Northeast Corner of Intersection  
 On SW Corner of Concrete Base  
 of High Line Pole.  
 Elev. = 1359.65 NGVD29

City of Wichita Benchmark Disc,  
 0.4 Mi. South of Kellogg On  
 135th St. W., West Side of  
 Concrete Base for High Line  
 Pole, West of K.G.&E.  
 Substation, 135'± South of  
 Railroad Tracks On East Side of  
 135th St. W.  
 Elev. = 1367.77 NGVD29

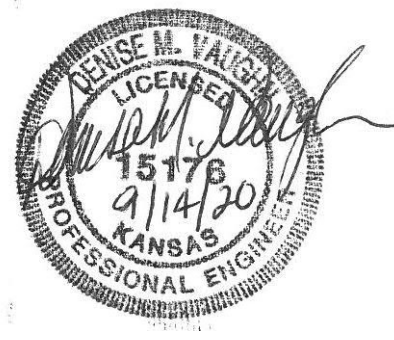
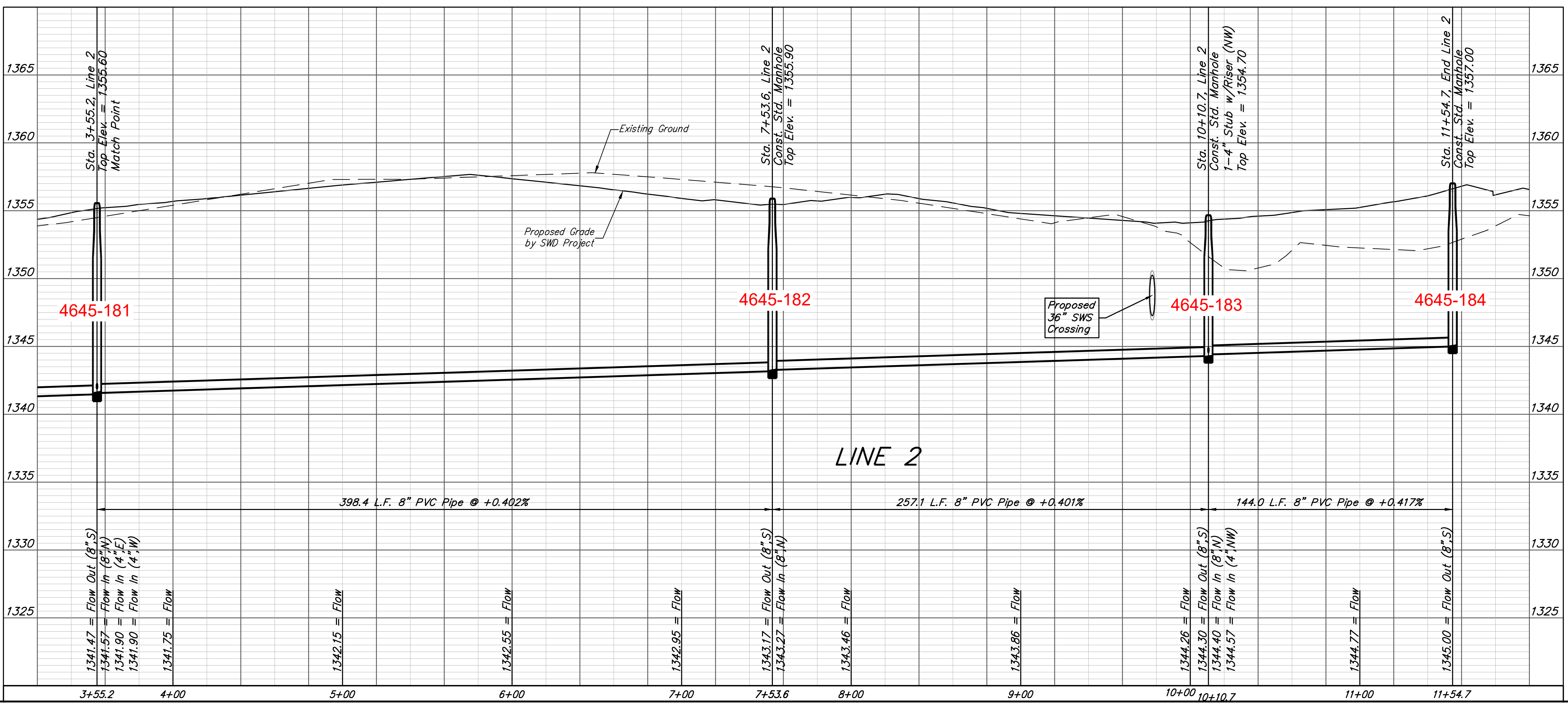


Distance from Main to Riser (Lt./Rt.)	Distance from	
	Upstream MH	Downstream MH
30' Lt.	330'	68'
5' Rt.	324'	74'
30' Lt.	258'	140'
5' Rt.	246'	152'
30' Lt.	186'	212'
5' Rt.	168'	230'
30' Lt.	114'	284'
5' Rt.	92'	306'
30' Lt.	32'	366'
5' Rt.	24'	13'
30' Lt.	222'	35'
5' Rt.	173'	84'
30' Lt.	149'	108'
5' Rt.	107'	150'
30' Lt.	75'	182'
32' Lt.	@ mh	257'
30' Lt.	59'	85'

SEWER SERVICE TABLE

NUMBER	TYPE	LOCATION				FOR INFORMATION ONLY	
		LOT NO.	BLOCK NO.	LINE NO.	STATION/DIRECTION	APPROXIMATE LENGTH 4" PIPE	
						VERTICAL	HORIZONTAL
22	8" X 4" Tee	29	A	2	4+23.5/Lt.	11.6'	30'
23	8" X 4" Tee	62	A	2	4+29.5/Rt.	10.3'	5'
24	8" X 4" Tee	30	A	2	4+95.5/Lt.	11.8'	30'
25	8" X 4" Tee	61	A	2	5+07.2/Rt.	11'	5'
26	8" X 4" Tee	31	A	2	5+67.5/Lt.	11.6'	30'
27	8" X 4" Tee	60	A	2	5+85.3/Rt.	11.3'	5'
28	8" X 4" Tee	32	A	2	5+39.5/Lt.	11.3'	30'
29	8" X 4" Tee	59	A	2	6+61.3/Rt.	10'	5'
30	8" X 4" Tee	33	A	2	7+21.5/Lt.	9.9'	30'
31	8" X 4" Tee	58	A	2	7+66.5/Rt.	8.3'	5'
32	8" X 4" Tee	34	A	2	7+88.8/Lt.	9.9'	30'
33	8" X 4" Tee	57	A	2	8+37.3/Rt.	7.8'	5'
34	8" X 4" Tee	35	A	2	8+61.9/Lt.	9.6'	30'
35	8" X 4" Tee	56	A	2	9+03.5/Rt.	7.1'	5'
36	8" X 4" Tee	36	A	2	9+35.0/Lt.	8.4'	30'
37	4" Stub	37	A	2	10+10.7/Lt.	7.3'	32'
38	8" X 4" Tee	38	A	2	10+95.0/Lt.	8.2'	30'

NOTE: Vertical Riser Pipe shall be extended to 2' minimum above ground water elevation and 4' maximum below proposed ground elevation.



**Baughman** Turkey Creek 4th Addition - Phase I  
**LINE 2**  
 Sanitary Sewer Improvements

Baughman Company, P.A. 315 Ellis St. Wichita, KS 67211 P 316-262-7271 F 316-262-0149  
 ENGINEERING | SURVEYING | PLANNING | LANDSCAPE ARCHITECTURE

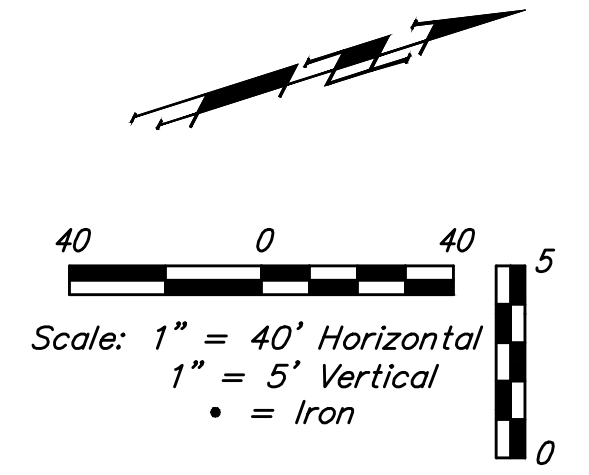
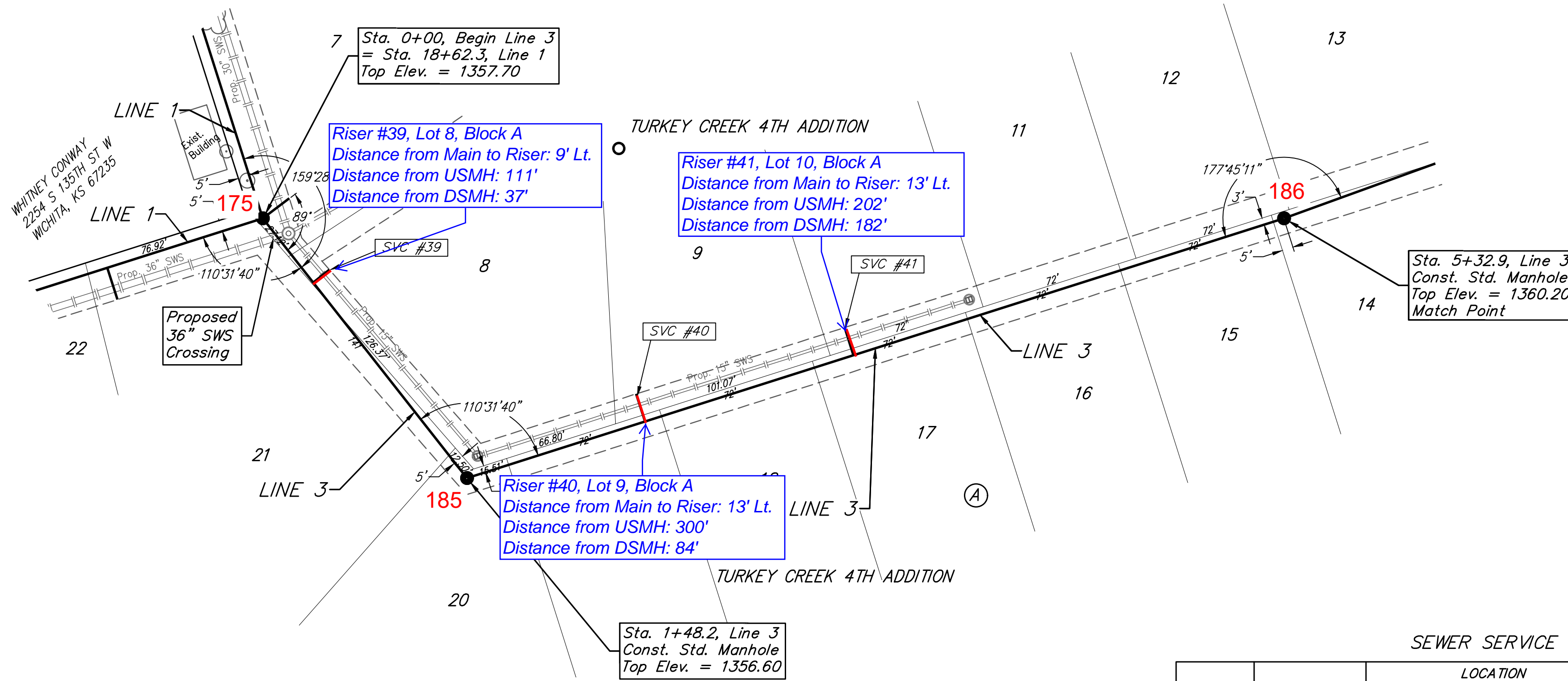
PROJECT NUMBER: 468-2020-016809  
 DESIGN: DMV  
 DRAWN: JAK  
 APPROVED: [Signature]  
 DATE: 9/10/2020

REVISIONS:  
 SCALE: Noted  
 SHEET: 7 OF 21

E:\Projects\Turkey Creek 4th\Engineering\Phase I\SS\_20-01-E455\SS PLANS.dwg

**BENCHMARKS:**  
 135th St. W. & Pawnee  
 City of Wichita Benchmark Disc,  
 Northeast Corner of Intersection  
 On SW Corner of Concrete Base  
 of High Line Pole.  
 Elev. = 1359.65 NGVD29

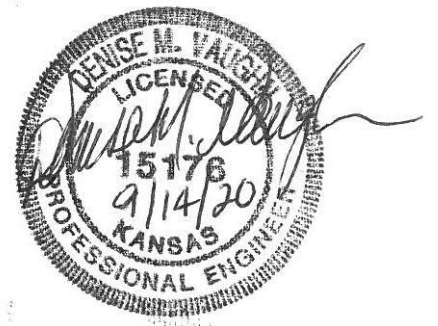
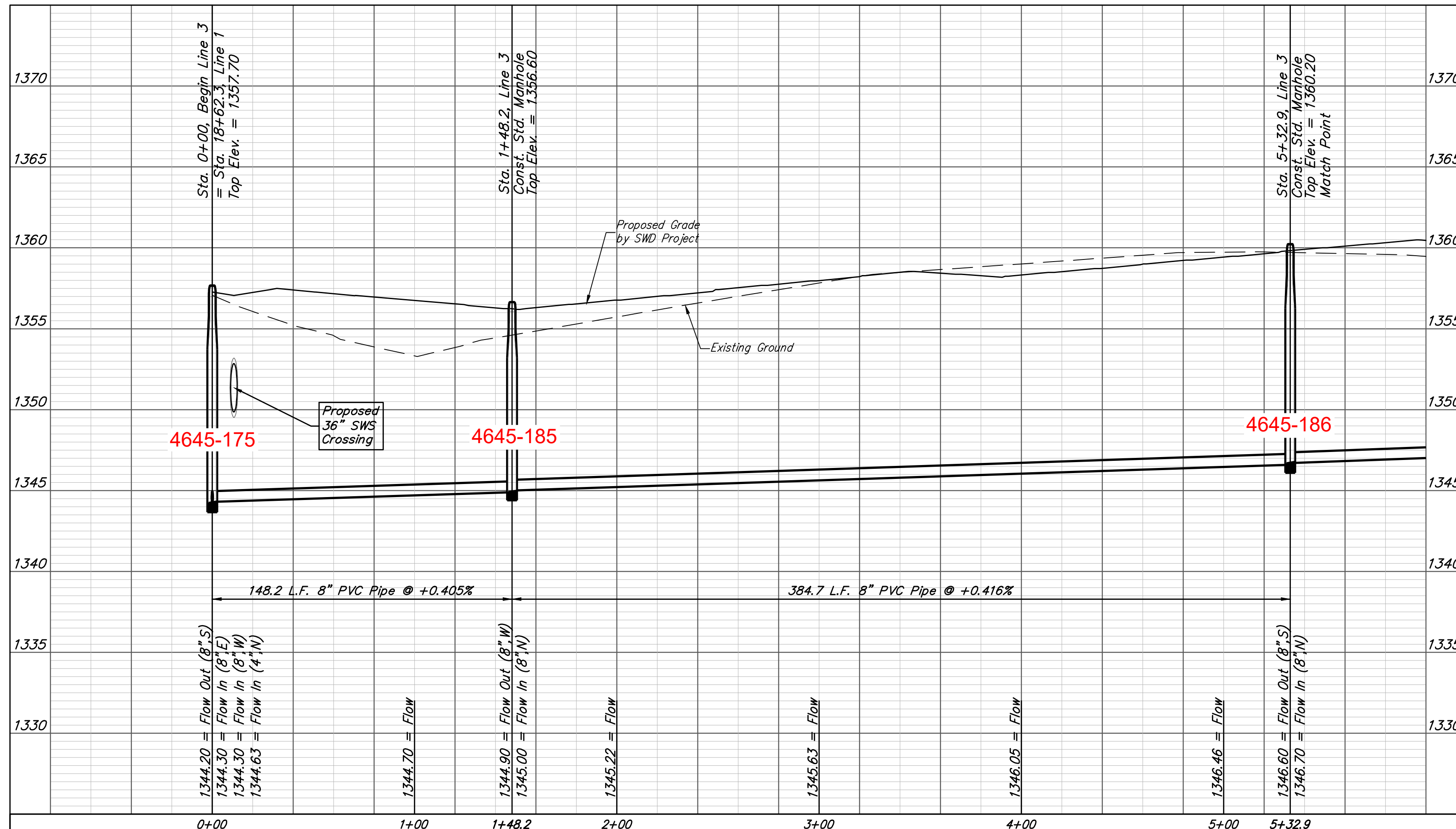
City of Wichita Benchmark Disc,  
 0.4 Mi. South of Kellogg On  
 135th St. W., West Side of  
 Concrete Base for High Line  
 Pole, West of K.G.&E.  
 Substation, 135± South of  
 Railroad Tracks On East Side of  
 135th St. W.  
 Elev. = 1367.77 NGVD29



SEWER SERVICE TABLE

NUMBER	TYPE	LOCATION			FOR INFORMATION ONLY		
		LOT NO.	BLOCK NO.	LINE NO.	STATION/DIRECTION	APPROXIMATE LENGTH 4" PIPE	
					VERTICAL	HORIZONTAL	
39	8" X 4" Tee	8	A	3	0+37.0/Lt.	8.7'	9'
40	8" X 4" Tee	9	A	3	2+32.0/Lt.	7.3'	13'
41	8" X 4" Tee	10	A	3	3+30.0/Lt.	8.2'	13'

NOTE: Vertical Riser Pipe shall be extended to 2' minimum above ground water elevation and 4' maximum below proposed ground elevation.



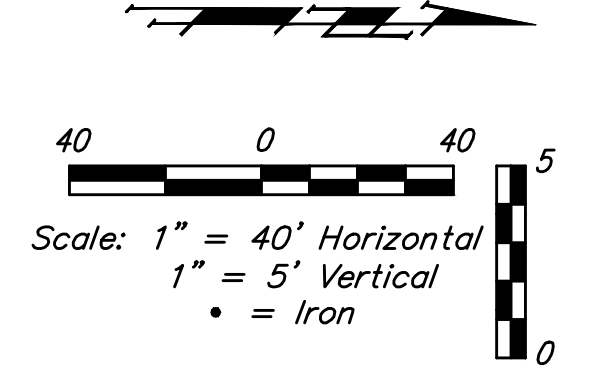
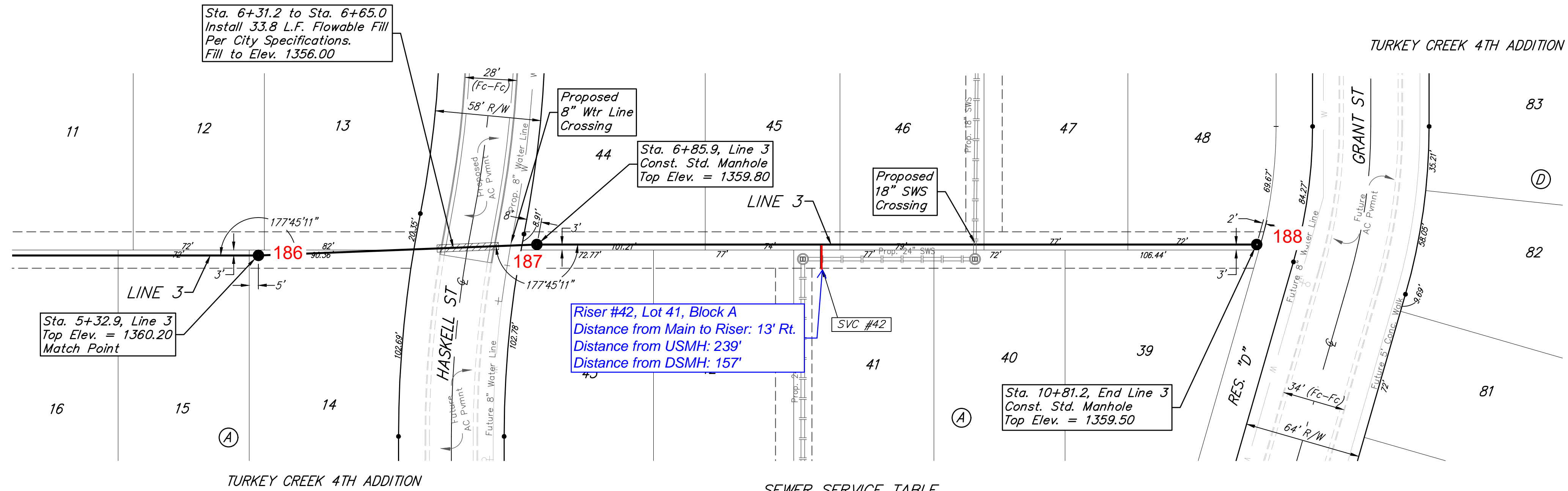
**Baughman** Turkey Creek 4th Addition - Phase I  
**LINE 3**  
 Sanitary Sewer Improvements

Baughman Company, P.A. 315 Ellis St. Wichita, KS 67211 P 316-262-7271 F 316-262-0149  
 ENGINEERING | SURVEYING | PLANNING | LANDSCAPE ARCHITECTURE

PROJECT NUMBER: 468-2020-016809  
 DESIGN: DMV  
 DRAWN: JAK  
 APPROVED: [Signature]  
 DATE: 9/10/2020  
 SCALE: Noted  
 SHEET: 8 OF 21

**BENCHMARKS:**  
 135th St. W. & Pawnee  
 City of Wichita Benchmark Disc,  
 Northeast Corner of Intersection  
 On SW Corner of Concrete Base  
 of High Line Pole.  
 Elev. = 1359.65 NGVD29

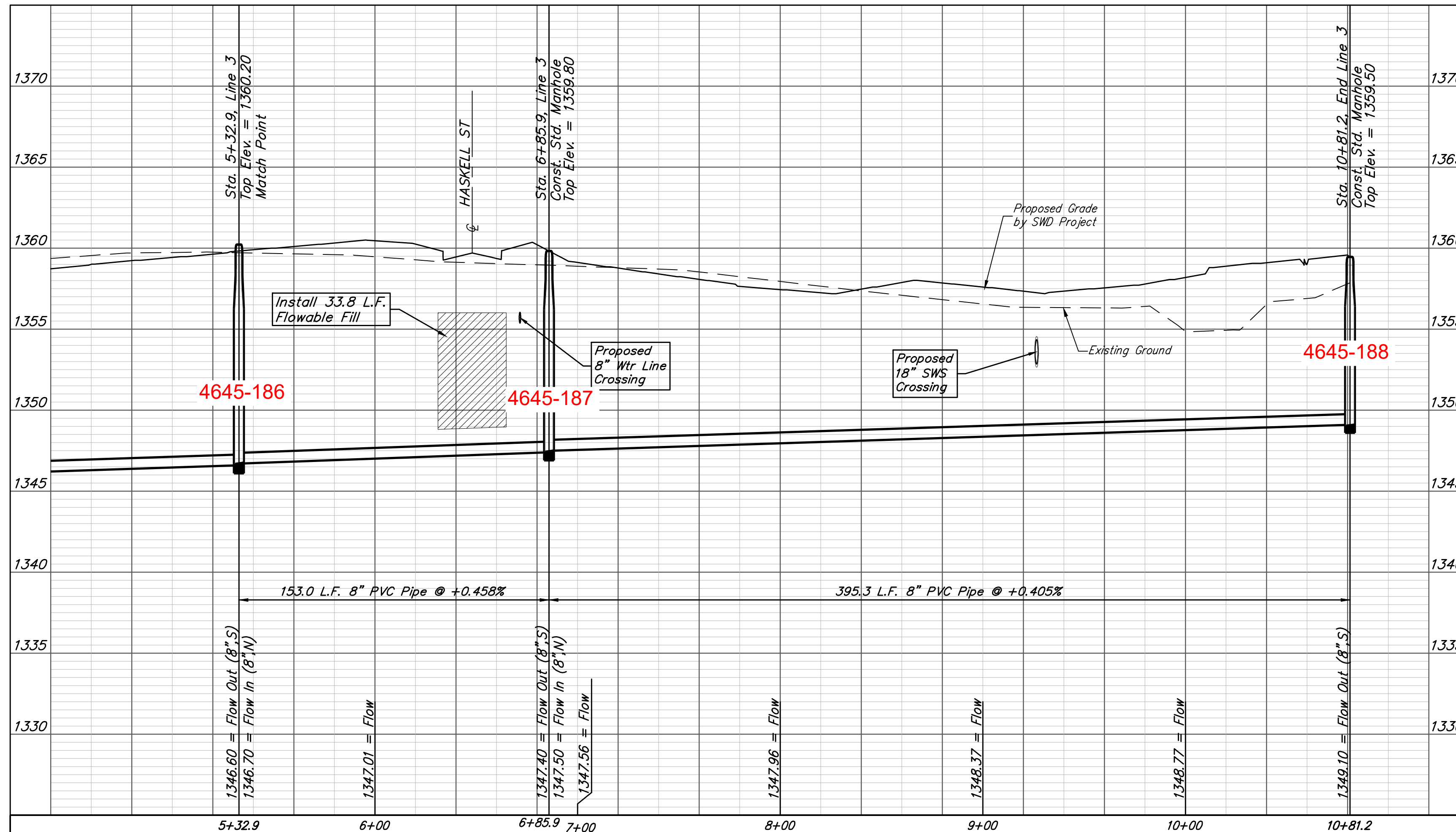
City of Wichita Benchmark Disc,  
 0.4 Mi. South of Kellogg On  
 135th St. W., West Side of  
 Concrete Base for High Line  
 Pole, West of K.G.&E.  
 Substation, 135± South of  
 Railroad Tracks On East Side of  
 135th St. W.  
 Elev. = 1367.77 NGVD29



SEWER SERVICE TABLE

NUMBER	TYPE	LOCATION				FOR INFORMATION ONLY	
		LOT NO.	BLOCK NO.	LINE NO.	STATION/DIRECTION	APPROXIMATE LENGTH 4" PIPE VERTICAL	HORIZONTAL
42	8" X 4" Tee	41	A	2	8+42.0/Rt.	4.7'	13'

NOTE: Vertical Riser Pipe shall be extended to 2' minimum above ground water elevation and 4' maximum below proposed ground elevation.

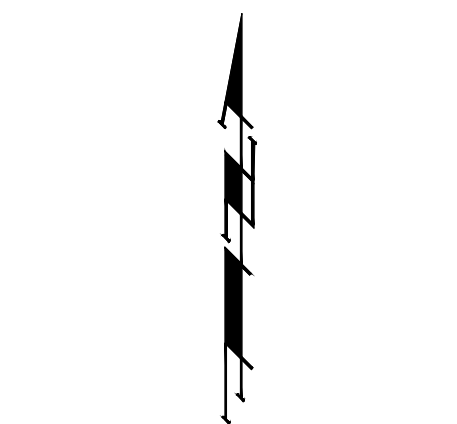


**Baughman** Turkey Creek 4th Addition - Phase I  
**LINE 3**  
 Sanitary Sewer Improvements

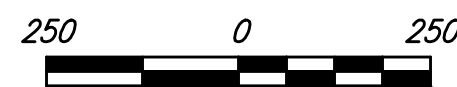
Baughman Company, P.A. 315 Ellis St. Wichita, KS 67211 P 316-262-7271 F 316-262-0149  
 ENGINEERING | SURVEYING | PLANNING | LANDSCAPE ARCHITECTURE

PROJECT NUMBER: 468-2020-016809 DESIGN: DMV DRAWN: JAK  
 APPROVED: DATE: 9/10/2020  
 REVISIONS: SCALE: Noted SHEET: 9 OF 21

E:\Projects\Turkey Creek 4th\_Engineering\Phase 1\SS 2020-E455\SS PLANS.dwg



Scale: 1" = 250'



- = #4 REBAR W/ "BAUGHMAN" CAP (SET)
- ◇ = BOLT OVER STONE (FOUND)
- = 1/2" IRON IN THIMBLE (FOUND)
- △ = 1" IRON IN BROKEN STONE (FOUND)
- = #5 REBAR IN THIMBLE (FOUND)
- ⊙ = 1" SQUARE PIN OVER STONE (FOUND)
- ⊗ = 3/4" IRON (FOUND)
- ▽ = 1/2" IRON (FOUND)



	Turkey Creek 4th Addition - Phase I	
	<b>Coordinate Sheet</b> Sanitary Sewer Improvements	
Baughman Company, P.A. 315 Ellis St. Wichita, KS 67211 P 316-262-7271 F 316-262-0149 ENGINEERING   SURVEYING   PLANNING   LANDSCAPE ARCHITECTURE		
PROJECT NUMBER 468-	DESIGN DMV	DRAWN JAK
REVISIONS:	APPROVED	DATE 6/24/2020
	SCALE Noted	SHEET <b>19 OF 21</b>

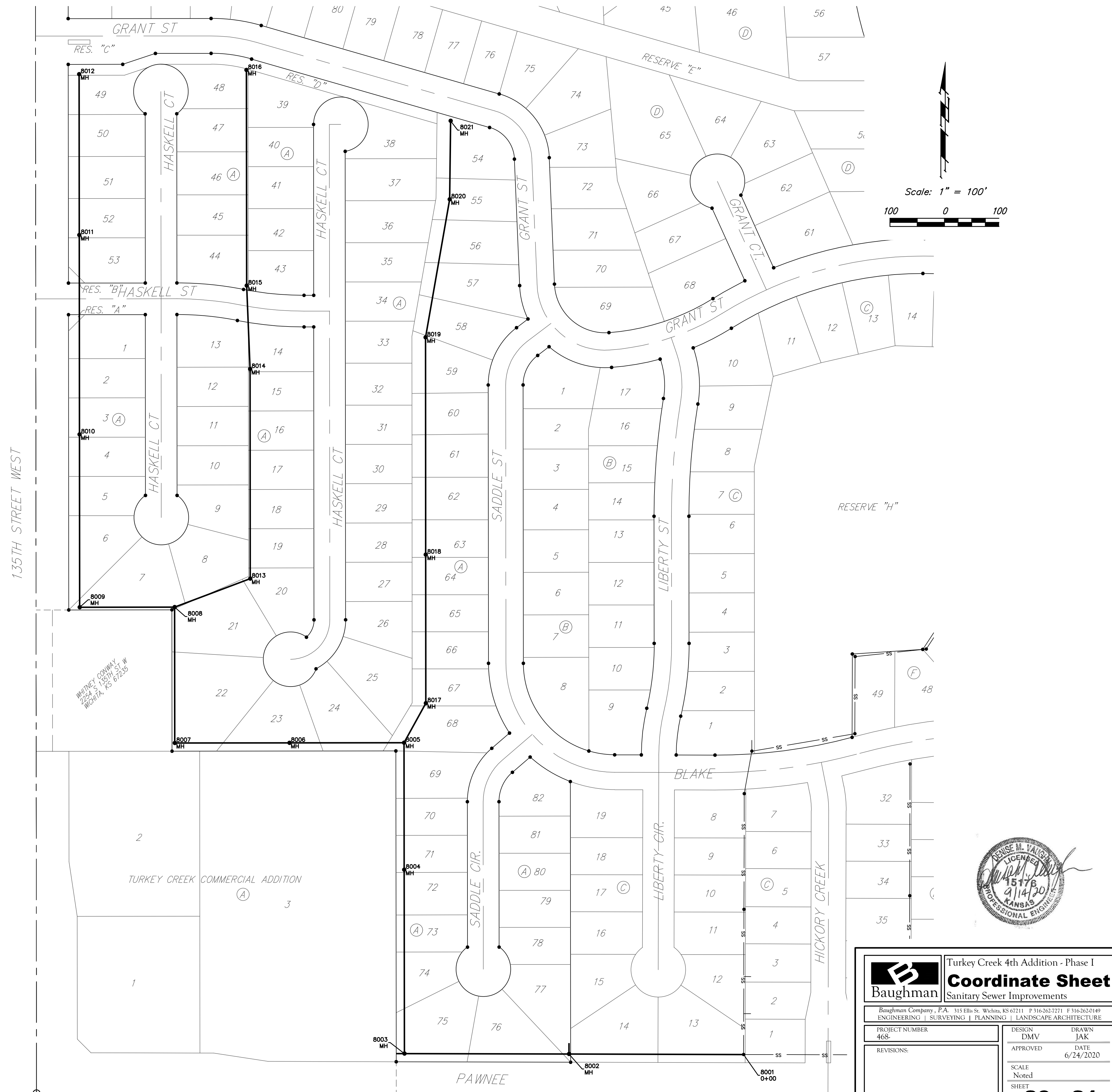
IRONS Point Table		
Point #	Northing	Easting
5	27,409.65	26,374.75
6	27,409.88	26,290.75
7	27,411.88	25,540.53
8	27,981.91	25,539.98
9	27,981.51	25,129.18
10	28,240.67	25,128.92
11	28,240.49	24,939.72
14	29,940.46	24,938.07
15	30,213.73	24,940.55
16	30,277.72	24,941.13
17	30,421.04	24,942.43
18	30,395.11	25,231.07
19	30,610.28	25,233.01
20	30,524.78	26,190.13
21	30,499.70	26,189.92
22	30,485.79	26,345.67
71	28,006.87	26,376.95
72	27,974.32	26,125.45
73	27,910.32	26,125.28
74	27,974.51	26,054.26
75	27,974.68	25,990.26
76	27,910.67	25,993.09
77	27,910.52	26,051.09
80	27,910.81	25,941.20
81	27,974.81	25,941.37
82	27,970.70	25,786.25
83	28,014.66	25,748.42
84	27,986.71	25,715.93
85	27,942.74	25,753.76
86	27,888.80	25,671.07
87	27,888.85	25,729.07
88	27,622.15	25,671.33
89	27,622.21	25,729.33
90	28,142.58	25,709.82
91	28,142.65	25,773.82
92	30,212.52	25,073.80
93	30,212.00	25,131.80
94	30,210.29	25,320.49
95	30,274.29	25,321.06
96	30,271.74	25,345.71
97	30,290.96	25,354.26
139	30,475.38	26,521.52
140	29,929.91	26,517.25
141	29,901.66	26,461.55
144	30,248.17	25,398.71
145	29,848.82	26,347.31
146	30,267.38	25,407.25
147	29,787.72	26,366.65
148	29,779.67	26,369.20
150	29,731.65	26,100.33
151	29,730.05	26,042.35
152	29,749.70	25,775.56
153	29,754.62	25,717.56
154	30,319.17	25,360.39
155	30,335.13	25,360.53
156	30,318.65	25,418.38
157	30,334.60	25,418.53
158	30,384.94	25,474.06
159	30,442.71	25,479.22
160	30,363.75	26,363.22

IRONS Point Table		
Point #	Northing	Easting
161	30,310.67	26,305.50
162	29,747.64	25,399.26
163	29,747.70	25,457.26
164	29,813.57	25,421.38
165	29,820.82	25,426.86
166	29,922.08	25,388.09
167	29,922.15	25,452.09
168	29,710.86	25,074.29
169	29,710.92	25,132.29
170	29,778.55	25,467.61
171	29,785.79	25,473.09
185	28,883.51	26,740.78
186	28,822.84	26,720.40
187	28,918.61	26,573.78
188	28,921.58	26,509.85
189	28,960.37	26,511.65
190	28,957.39	26,575.59
191	29,770.78	25,527.23
192	29,834.55	25,532.64
193	30,142.36	25,387.87
194	30,142.43	25,451.87
195	28,868.09	26,233.08
196	28,844.22	26,180.23
197	28,811.46	26,121.63
198	28,757.09	26,155.39
199	28,721.09	26,085.33
200	28,700.51	26,024.73
201	29,325.00	24,938.67
202	29,241.00	24,938.75
203	29,241.09	25,038.75
204	29,261.15	25,098.73
205	29,325.25	25,200.87
206	29,261.25	25,200.94
207	29,250.82	25,275.24
208	29,312.33	25,292.93
209	29,130.90	25,388.86
210	29,081.60	25,446.91
211	28,840.13	25,080.14
212	28,840.19	25,138.14
219	28,782.13	25,080.20
220	28,782.00	24,939.20
221	28,782.19	25,138.20
222	28,840.00	24,939.14
223	28,828.31	25,260.40
224	28,771.41	25,249.19
225	28,817.53	25,371.39
226	28,817.55	25,389.16
227	28,450.52	25,080.52
228	28,450.58	25,138.52
229	28,759.53	25,371.45
230	28,759.55	25,389.22
231	28,222.36	25,389.74
232	28,190.53	25,375.84
233	28,132.55	25,393.36
234	28,222.42	25,447.74
235	28,653.07	25,709.32
236	28,653.14	25,773.32
237	28,758.16	25,761.27
238	28,707.27	25,800.08
239	28,723.24	25,821.02

IRONS Point Table		
Point #	Northing	Easting
240	28,774.13	25,782.20
241	28,749.17	25,930.83
242	28,685.35	25,935.65
243	28,060.20	26,000.19
244	28,045.70	26,062.52
245	28,179.19	26,013.79
246	28,179.25	26,077.79
247	28,412.28	26,013.56
248	28,412.34	26,077.56
249	28,628.34	26,030.79
250	28,618.13	26,093.97
251	28,977.36	26,120.08
252	29,001.24	26,172.94
253	28,835.42	25,766.95
254	28,838.06	25,830.90
302	29,067.36	25,757.36
303	29,070.01	25,821.31
304	29,125.31	25,711.82
305	29,186.82	25,729.51
306	29,733.34	25,968.21
307	29,797.11	25,973.62
308	29,605.20	26,380.86
312	29,138.16	26,467.05
322	29,486.77	26,107.07
323	29,485.18	26,049.09
324	27,411.02	25,860.53
325	28,857.59	26,506.87
326	29,581.59	25,775.72
327	29,581.53	25,717.72
328	28,617.63	26,699.88
329	28,538.87	26,635.77
330	29,673.07	25,399.33
331	29,673.12	25,457.33
332	28,361.39	26,635.29
333	28,168.19	26,506.60
334	28,159.70	26,377.36

CONTROL POINTS Point Table			
Point #	Northing	Easting	Desc.
501	32,584.25	24,901.96	NWCOR
502	32,612.53	27,513.28	N1\4COR
503	29,999.21	30,061.99	E1\4COR
504	27,360.78	29,997.18	SECOR
505	27,353.64	24,880.59	SWCOR
506	29,939.11	24,878.07	W1\4COR
507	29,997.85	27,492.82	CTR
508	27,346.81	27,439.22	S1\4COR
600	27,336.68	26,119.57	R
601	27,364.65	28,223.19	R
602	29,803.90	30,075.28	N
603	29,939.45	24,908.10	AMPA5
606	29,999.06	30,022.07	ARM5
702	27,442.50	24,976.73	CP
710	32,566.65	26,958.64	CP
718	30,423.52	24,912.64	AMPA5
801	27,376.51	29,966.08	PK
802	27,442.50	24,976.73	CP
803	29,899.34	24,954.88	CP
804	30,073.40	27,453.20	CP
810	32,566.64	26,958.64	CP
811	32,473.94	26,206.49	4BF
812	30,624.50	26,190.89	4BF
813	30,569.47	26,223.82	CP
815	31,305.15	27,502.90	4BF
816	30,731.98	27,498.38	4BF
817	30,351.39	24,911.86	4BF
822	27,390.46	30,036.25	BMCOW
843	30,634.08	24,962.62	N
845	27,365.81	28,315.31	BMCOW

SS POINTS Point Table			
Point #	Northing	Easting	Desc.
8001	27,425.18	26,177.79	0+00
8002	27,426.03	25,857.52	MH
8003	27,426.84	25,555.52	MH
8004	27,764.05	25,555.19	MH
8005	27,996.92	25,554.96	MH
8006	27,996.72	25,344.56	MH
8007	27,996.51	25,134.16	MH
8008	28,245.67	25,133.92	MH
8009	28,245.50	24,959.72	MH
8010	28,562.34	24,959.41	MH
8011	28,928.02	24,959.05	MH
8012	29,223.01	24,958.77	MH
8013	28,297.78	25,272.67	MH
8014	28,682.44	25,272.29	MH
8015	28,835.35	25,266.15	MH
8016	29,230.63	25,265.76	MH



**Baughman** Turkey Creek 4th Addition - Phase I  
**Coordinate Sheet**  
 Sanitary Sewer Improvements

Baughman Company, P.A. 315 Ellis St. Wichita, KS 67211 P 316-262-7271 F 316-262-0149  
 ENGINEERING | SURVEYING | PLANNING | LANDSCAPE ARCHITECTURE

PROJECT NUMBER: 468-  
 DESIGN: DMV  
 DRAWN: JAK  
 APPROVED: [Signature]  
 DATE: 6/24/2020

REVISIONS:  
 SCALE: Noted  
 SHEET: 20 OF 21

