

Project: 120035-
 COW -Cheney Pump Station Ozone Strainer
 Replacement

Spec Section Num: 26 05 00
Submittal: 260500-02

Revision: 0
Package: Electrical
Date: 11/19/2020 UTC

Submittal Title: Conduit Product Data
Submittal Detail:
Response Due By: 11/30/2020 UTC

Contractor:
 Eric Swenson
 Dondlinger Construction

Contractor's Stamp	
DONDLINGER AND SONS CONST. CO., INC.	
<input checked="" type="checkbox"/>	Reviewed <u>Eric Swenson</u>
<input type="checkbox"/>	Reviewed as Noted _____
<input type="checkbox"/>	Revise and Resubmit _____
<input checked="" type="checkbox"/>	Date <u>11/19/20</u>
<input checked="" type="checkbox"/>	Submittal No. <u>260500-02</u>
REVIEW OF ITEMS DOES NOT RELIEVE VENDOR FROM COMPLYING WITH REQUIREMENTS OF CONTRACT PLANS AND SPECIFICATIONS, CONTRACT AND CITY, STATE AND LOCAL CODES.	

Architect:
 Aidan Gearhart
 PEC

Architect's Stamp

SUBMITTAL REVIEW FOR ENGINEERED COMPONENTS

- APPROVED**
- APPROVED AS NOTED**
 If checked above, fabrication MAY be undertaken and re-submittal is not required unless specifically noted in the correction comments. Review does not authorize changes to Contract Sum unless stated in a Change Order.
- REVISE AND RESUBMIT**
- REJECTED**

See Contract Documents for Contractor's engineered component responsibility. Approval is only for general conformance with the design criteria of the project. Contractor at all times remains solely responsible for compliance with the Contract Documents, including dimensions and safety analyses. Deviations are not approved unless Contractor has in writing called Engineer's attention to such deviation at the time of submission and Engineer has in writing approved the specific deviation. No acceptance by Engineer relieves Contractor from responsibility for errors or omissions in Compliance Submittals.



PROFESSIONAL ENGINEERING CONSULTANTS, P.A.
 BY RWW DATE 11/27/2020

Response:
Comment:

Comments:
 - Minimum conduit size shall be 3/4" indoors and 1" outdoors.

Shelley Electric, Inc.

Submittal # 26 05 33-001

Job: COW-Cheney Pump Station Ozone Strainer

Architect Info: PEC - Wichita

Location: Cheney Pump Station

Specification/Drawing Reference: 26 05 33

Specification Description: Conduit

Item Submitted: EMT Conduit

<input type="checkbox"/>	Record Drawing		
<input checked="" type="checkbox"/>	For Approval		
<input type="checkbox"/>	Resubmitted for Approval		
For conformity with plans and specifications			
Shelley Electric, Inc.			
Date	<u>10/19/20</u>	By	<u>JD</u>

Stamp Area

Notes & Clarifications:

Alternate manufacturers meeting specifications may be necessary to meet contract schedules.

Steel compression fittings shall be utilized with EMT conduit.

New conduit is only anticipated in electrical room. However, if incidental conduit replacement is necessary in process are, it shall match existing material type.

Electrical Metallic Tubing (EMT) and True Color™ EMT



A PART OF **atkore**
INFRASTRUCTURE

E-Z Pull® EMT

- Hot galvanized steel using patented inline Flo-Coat® process for long lasting exterior protection
- E-Z Pull interior coating provides a smooth raceway for fast, easier wire-pulling
- Excellent mechanical protection for conductors
- Ductility for faster and easier bending
- Optimal EMI shielding characteristics
- Listed to Underwriters Laboratories Safety Standard UL 797
- Manufactured in accordance with ANSI C80.3
- Available in sizes 1/2 (16) - 4 (103)

True Color™ EMT

- All the benefits of E-Z Pull EMT
- Instant identification of multiple circuits
- Fire Alarm® Red EMT
- Healthcare Green EMT
- Data Com Blue EMT
- Available in 8 colors
- Available in sizes 1/2 (16) - 4 (103)

Quality Electrical Metallic Tubing



Identify Important Circuits Instantly!



True Color™ Applications

Black EMT

- Blends in dark colored areas

Fire Alarm® EMT

- Emergency circuits
- Fire alarm and Security systems

Orange EMT

- Construction/research areas
- Fiber optic systems
- Auto repair/maintenance

Yellow EMT

- High voltage wiring
- Caution areas
- Special equipment

Green EMT

- Hospital and healthcare areas
- Nurse call stations
- Critical circuits

Blue EMT

- Low voltage wiring
- Data com/video
- Network security

Purple EMT

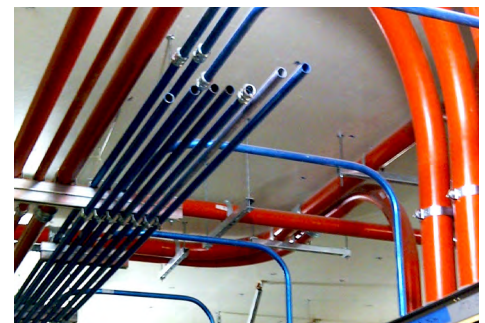
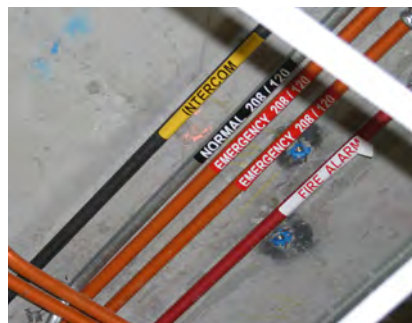
- Specialty wiring systems
- Security systems

White EMT

- Blends in light colored areas

Silver EMT

- Standard Use
- Contemporary architecture



Project Information

Company Name: _____
 Address: _____
 City: _____
 State & Zip: _____
 Phone: _____
 Project Name: _____
 City: _____
 State: _____

Electrical Metallic Tubing (EMT) and True Color™ EMT



A PART OF **atkore**
INTERNATIONAL

FEATURES & SPECIFICATIONS

Manufactured for Long Life

Allied Tube & Conduit® EMT is precision manufactured from high grade mild strip steel for exceptional durability and long-lasting life. Allied EMT is hot galvanized using a patented inline Flo-Coat® process. This process combines zinc, a conversion coating, and a clear organic polymer topcoat to form a triple layer of protection against corrosion and abrasion.

E-Z Pull® EMT combines strength with ductility, providing easy bending, cutting and joining while resisting flattening, kinking and splitting. Available in sizes 1/2 (16) - 4 (103).

Coatings

Allied's EMT (Electrical Metallic Tubing) has a special low friction ID coating called E-Z Pull that greatly improves the slip properties between conduit and wire. With E-Z Pull EMT, wire pulls through the EMT smoothly and easily, making installation easier and faster.

EMI Shielding

Allied EMT is very effective in reducing electromagnetic field levels for encased power distribution circuits, shielding computers and other sensitive electronic equipment from the effects of electromagnetic interference. For more information on EMT shielding, visit www.alliedeg.com to obtain the **GEMI (Grounding and Electro-Magnetic Interference)** software analysis program.

Electrical Metallic Tubing (EMT) and True Color™ EMT

Listed to Underwriters Laboratories Safety Standard UL 797
Manufactured in accordance with ANSI C80.3



Trade Size	Metric Designator	Outside Diameter ¹		Nominal Wall Thickness ²		Approximate Weight Per 100 Ft. (30.5M)		Red and Galvanized Master Bundle Quantity		True Color** Bundle Qty.	
		in	mm	in	mm	lb	kg	ft	m	ft	m
1/2	16	0.706	17.93	0.042	1.07	30	13.6	7000	2135	3500	1066.8
3/4	21	0.922	23.42	0.049	1.24	46	20.9	5000	1525	2500	762.0
1	27	1.163	29.54	0.057	1.45	67	30.4	3000	915	1500*	457.2
1-1/4	35	1.510	38.35	0.065	1.65	101	45.8	2000	610	2000	609.6
1-1/2	41	1.740	44.20	0.065	1.65	116	52.6	1500	457.5	1500	457.2
2	53	2.197	55.80	0.065	1.65	148	67.1	1200	366.0	1200	365.7
2-1/2	63	2.875	73.03	0.072	1.83	216	98.0	610	186.1	610	185.9
3	78	3.500	88.90	0.072	1.83	263	119.3	510	155.6	510	155.4
3-1/2	91	4.000	101.60	0.083	2.11	349	158.3	370	112.9	370	112.7
4	103	4.500	114.30	0.083	2.11	393	178.3	300	91.5	300	91.5

¹Outside diameter tolerances: +/- .005 in. (.13mm) for trade sizes 1/2 (16mm) through 2 (53mm);
+/- .010 in. (.25mm) for trade sizes 2-1/2 (63mm);
+/- .015 in. (.38mm) for trade size 3 (78mm);
+/- .020 in. (.51mm) for trade sizes 3-1/2 (91mm) and 4 (103mm).

*Blue trade size 1 master bundle size: 3000 ft / 915 m
** Other Color Trade Sizes 2 - 4 are available thru special order
NOTE: Length = 10 ft. (3.05m) with a tolerance of +/- .25 in. (6.35 mm)

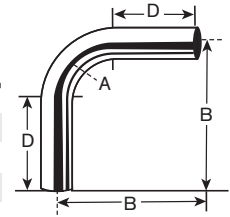
Electrical Metallic Tubing (EMT) Elbows

EMT 90° Elbows

Listed to Underwriters Laboratories Safety Standard UL 797
 Manufactured in accordance with ANSI C80.3



Trade Size	Metric Designator	Radius (A) ¹		Offset (B) ²		Straight (D) ¹		Approximate Weight Per 100 Pieces		Standard Package
		in	mm	in	mm	in	mm	lb	kg	
1/2	16	4	102	5 7/8	149	1 1/2	38	25	11.3	25
3/4	21	4 1/2	114	7	178	1 1/2	38	46	20.9	50
1	27	5 3/4	146	8 3/4	222	1 7/8	48	84	38.1	25
1 1/4	35	7 1/4	184	10 1/8	257	2	51	144	65.3	20
1 1/2	41	8 1/4	210	11 3/4	298	2	51	193	87.5	15
2	53	9 1/2	241	14	356	2	51	296	134.3	10
2 1/2	63	10 1/2	267	16 1/4	413	3	76	504	228.6	1
3	78	13	330	18 3/4	476	3 1/8	79	701	318.0	1
3 1/2	91	15	381	21 1/4	540	3 1/4	83	1047	474.9	1
4	103	16	406	23 3/8	594	3 3/8	86	1310	594.2	1



¹Minimum requirement as per UL Standard

²Dimensions and weights are approximate

Sizes 2-1/2 (63) and larger shipped in palletized cartons or bulk.

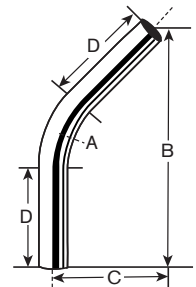
Also available in the following Degrees (60°, 45°, 30°, 22-1/2°, 15° & 11-1/4°)

EMT 45° Elbows

Listed to Underwriters Laboratories Safety Standard UL 797
 Manufactured in accordance with ANSI C80.3



Trade Size	Metric Designator	Radius (A) ¹		Offset (B) ²		Offset (C) ²		Straight (D) ¹		Approximate Weight Per 100 Pieces		Standard Package
		in	mm	in	mm	in	mm	in	mm	lb	kg	
1/2	16	4	102	6 1/8	156	2 1/2	64	1 1/2	38	18	8.2	25
3/4	21	4 1/2	114	7 3/8	187	3 1/8	79	1 1/2	38	33	15.0	50
1	27	5 3/4	146	8 3/4	222	3 5/8	92	1 7/8	48	56	25.4	25
1 1/4	35	7 1/4	184	10 1/8	257	4 1/8	105	2	51	97	44.0	20
1 1/2	41	8 1/4	210	13 1/8	333	5 3/8	137	2	51	145	65.8	15
2	53	9 1/2	241	13 1/8	333	5 1/2	140	2	51	185	83.9	10
2 1/2	63	10 1/2	267	17 1/2	445	7 1/4	184	3	76	360	163.3	1
3	78	13	330	17 1/2	445	7 1/4	184	3 1/8	79	438	198.7	1
3 1/2	91	15	381	26 1/8	664	10 7/8	276	3 1/4	83	873	396.0	1
4	103	16	406	26 1/4	667	10 7/8	276	3 3/8	86	983	445.9	1



¹Minimum requirement as per UL Standard

²Dimensions and weights are approximate

Sizes 2-1/2 (63) and larger shipped in palletized cartons or bulk.

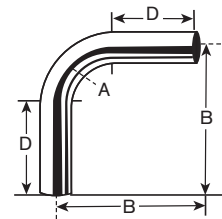
Also available in the following Degrees (90°, 60°, 30°, 22-1/2°, 15° & 11-1/4°)

NOTE: Special orders are non-cancelable, non-returnable and non-refundable

Electrical Metallic Tubing (EMT) Elbows

EMT Large Radius 90° Elbows

Listed to Underwriters Laboratories Safety Standard UL 797
 Manufactured in accordance with ANSI C80.3



Trade Size	Metric Designator	Radius (A)		Offset (B) ²		Straight (D) ²		Approximate Weight Per 100 Pieces	
		in	mm	in	mm	in	mm	lb	kg
1	27	12	305	20 5/8	524	8 5/8	219	201	91.2
1	27	15	381	24 1/4	616	9 1/4	235	235	106.6
1	27	18	457	27 7/8	708	9 7/8	251	268	121.6
1	27	24	610	34 5/8	879	10 5/8	270	329	149.2
1	27	30	762	41	1041	11	279	385	174.6
1	27	36	914	46 3/4	1187	10 3/4	273	436	197.8
1	27	42	1067	54	1372	12	305	503	228.2
1	27	48	1219	60 1/4	1530	12 1/4	311	558	253.1
1 1/4	35	12	305	20 5/8	524	8 5/8	219	303	137.4
1 1/4	35	15	381	24 1/4	616	9 1/4	235	354	160.6
1 1/4	35	18	457	27 7/8	708	9 7/8	251	404	183.3
1 1/4	35	24	610	34 5/8	879	10 5/8	270	497	225.4
1 1/4	35	30	762	41	1041	11	279	581	263.5
1 1/4	35	36	914	46 3/4	1187	10 3/4	273	657	298.0
1 1/4	35	42	1067	54	1372	12	305	758	343.8
1 1/4	35	48	1219	60 1/4	1530	12 1/4	311	842	381.9
1 1/2	41	15	381	24 1/4	616	9 1/4	235	406	184.2
1 1/2	41	18	457	27 7/8	708	9 7/8	251	464	210.5
1 1/2	41	24	610	34 5/8	879	10 5/8	270	570	258.6
1 1/2	41	30	762	41	1041	11	279	667	302.6
1 1/2	41	36	914	46 3/4	1187	10 3/4	273	754	342.0
1 1/2	41	42	1067	54	1372	12	305	870	394.6
1 1/2	41	48	1219	60 1/4	1530	12 1/4	311	967	438.6
2	53	15	381	24 1/4	616	9 1/4	235	518	235.0
2	53	18	457	27 7/8	708	9 7/8	251	592	268.5
2	53	24	610	34 5/8	879	10 5/8	270	728	330.2
2	53	30	762	41	1041	11	279	851	386.0
2	53	36	914	46 3/4	1187	10 3/4	273	962	436.4
2	53	42	1067	54	1372	12	305	1110	503.5
2	53	48	1219	60 1/4	1530	12 1/4	311	1233	559.3
2 1/2	63	18	457	27 7/8	708	9 7/8	251	864	391.9
2 1/2	63	24	610	34 5/8	879	10 5/8	270	1062	481.7
2 1/2	63	30	762	41	1041	11	279	1242	563.4
2 1/2	63	36	914	46 3/4	1187	10 3/4	273	1404	636.9
2 1/2	63	42	1067	54	1372	12	305	1620	734.8
2 1/2	63	48	1219	60 1/4	1530	12 1/4	311	1800	816.5

²For information only, not a requirement as per UL Standard
 Sizes 2-1/2 (63) and larger shipped in palletized cartons or bulk.
 Also available in the following Degrees (60°, 45°, 30°, 22-1/2°, 15° & 11-1/4°)

Chart continued on the next page

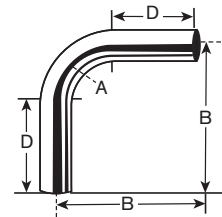
Electrical Metallic Tubing (EMT) Elbows

EMT Large Radius 90° Elbows (continued)

Listed to Underwriters Laboratories Safety Standard UL 797
 Manufactured in accordance with ANSI C80.3



Trade Size	Metric Designator	Radius (A)		Offset (B) ²		Straight (D) ²		Approximate Weight Per 100 Pieces	
		in	mm	in	mm	in	mm	lb	kg
3	78	15	381	24 1/4	616	9 1/4	235	921	417.8
3	78	18	457	27 7/8	708	9 7/8	251	1052	477.2
3	78	24	610	34 5/8	879	10 5/8	270	1293	586.5
3	78	30	762	41	1041	11	279	1512	685.8
3	78	36	914	46 3/4	1187	10 3/4	273	1710	775.7
3	78	42	1067	54	1372	12	305	1973	895.0
3	78	48	1219	60 1/4	1530	12 1/4	311	2192	994.3
3 1/2	91	18	457	27 7/8	708	9 7/8	251	1396	633.2
3 1/2	91	24	610	34 5/8	879	10 5/8	270	1716	778.4
3 1/2	91	30	762	41	1041	11	279	2007	910.4
3 1/2	91	36	914	46 3/4	1187	10 3/4	273	2269	1029.2
3 1/2	91	42	1067	54	1372	12	305	2618	1187.5
3 1/2	91	48	1219	60 1/4	1530	12 1/4	311	2908	1319.1
4	103	24	610	34 5/8	879	10 5/8	270	1932	876.4
4	103	30	762	41	1041	11	279	2260	1025.1
4	103	36	914	46 3/4	1187	10 3/4	273	2555	1158.9
4	103	42	1067	54	1372	12	305	2948	1337.2
4	103	48	1219	60 1/4	1530	12 1/4	311	3275	1485.5



²For information only, not a requirement as per UL Standard
 Sizes 2-1/2 (63) and larger shipped in palletized cartons or bulk.
 Also available in the following Degrees (60°, 45°, 30°, 22-1/2°, 15° & 11-1/4°)

NOTE: Special orders are non-cancelable, non-returnable and non-refundable