

GENERAL NOTES:

1. The Contractor shall comply with all applicable safety regulations. All construction shall be completed following current City Standard Specifications and Special Provisions.
2. Contractor will be required to provide notice to utility companies a minimum of seventy-two (72) hours prior to any excavation, as follows:

Kansas One-Call 687-2470

The Contractor must notify the following in case of an emergency:

AT&T 1-800-246-8464
 Black Hills Energy 1-800-694-8989
 City of Wichita Water & Sewer 1-316-219-8921
 City of Wichita Stormwater 1-316-268-4090
 City of Wichita Traffic 1-316-268-4034
 Cox Communications 1-888-249-3530
 Kansas Gas Service 1-888-482-4950
 Energy 1-800-544-4857

3. Utility service lines, poles, etc. are to be adjusted as necessary by others prior to construction unless the plans specifically call for their adjustment by the Contractor or unless the plans specifically identify a utility to be adjusted by its owner during construction. Existing utilities and their location, as shown on the plans, represent the best information obtainable for design. The Contractor will be required to work around existing utilities within the right-of-way which do not conflict with proposed construction.

4. Rubble from the removal of miscellaneous structures and excess excavation which is to be wasted shall be disposed of on sites to be provided by the Contractor. These sites shall be approved by the Engineer as to suitability, appearance and site location. Locations, in the opinion of the Engineer, that will leave an unsightly appearance will not be approved. All disposal sites must be approved by the Kansas Department of Health and Environment. Material either stockpiled or disposed of in a flood plain will require a Kansas State Board of Agriculture permit. Any material dumped in waters of the United States or wetlands is subject to U.S. Corps of Engineers permitting regulations. Any material buried or stockpiled beyond approved construction limits will require additional archaeological investigations unless buried in a previously approved borrow location.

5. Trees and shrubs in public right-of-way which are in direct conflict with proposed new construction shall be removed by the Contractor with the City Engineer's approval. Trees and shrubs which are not in direct conflict with proposed new construction shall be saved and protected from damage.

6. The Contractor shall give all property owners and/or tenants of developed property abutting the construction of this project a minimum of ten (10) days notice prior to start of construction.

7. The Contractor shall be responsible for preserving property irons. The Contractor will be required to re-establish any property irons which are damaged or destroyed by his construction operations. Such irons shall be re-established by a licensed land surveyor in accordance with state laws.

11. All elevations shown are NAVD88.

16. All stubs and capped pipes shall be located with green plastic tape in the same manner as risers.

17. Connecting to Existing Manholes: Prior to laying sewer lines using existing stubs in existing manholes, the Contractor shall expose and verify the elevation, grade and alignment of existing stubs and notify the Engineer of any deviation from the plans. Where the stub is unusable due to elevation grade or alignment, the Contractor shall remove the stub and plug the hole, and reshape the existing manhole invert to provide smooth flow. Where connection to an existing manhole that does not have an existing stub, the Contractor shall core cut into existing manhole wall to make connection using approved water stop gasket, and reshape the existing manhole invert to provide smooth flow. The cost of connect to existing manholes is incidental to the project.

18. Contractor shall limit the extent of trench open overnight and weekends to less than 50 feet.

19. Contractor shall provide positive drainage away from all manhole covers.

20. The Contractor shall prevent any construction debris from entering the existing sanitary sewer during construction.

23. The Contractor shall protect from damage and support existing utilities through construction as approved by the utility owner and the Engineer at the contractor's expense.

24. Contractor shall grade around exposed manholes at a 1:1 slope. Manholes set lower than existing grade shall have a 9" berm constructed around manhole to prevent infiltration into sanitary sewer system. Cost of dirt, labor, equipment, etc. to be incidental to cost of manhole. Easements shall be graded with the street improvement project as part of the mass grading plan.

25. All disturbed areas are to be seeded as follows:

Seed -- Rye grass; 5 lbs./1000 Sq. Ft.

All costs associated with seeding including mobilization, preparation of ground, seeding, fertilizing, mulching, etc. shall be included in the L.S. bid item "Seeding".

28. All existing and proposed erosion control measures including silt fencing, erosion control mat, straw bales, inlet barriers, and const. entrance shall be maintained throughout construction by the contractor and until project is accepted by the City of Wichita. The on-site engineer shall complete weekly reports on the status of erosion control measures. The contractor shall be required to comply with maintenance and/or replacement of erosion control measures as determined by the on-site engineer until project is accepted by City of Wichita. Maintenance and/or replacement of erosion control measures to be paid by L.S. bid item "Maintain Existing BMPs".

29. All excess excavation shall remain on-site and shall be stockpiled or spread at a location determined by the engineer.

30. Contractor shall contact Engineer for availability and location of contractor borrow.

32. The developer for this project is Jay W. Russell, P.O. Box 75337, Wichita, KS 67272 (316)722-2417 j@russellco.com

33. Construction Schedule: The bidder shall include in the bid package a proposed schedule for construction which will be considered in the awarding of the contract. Contact developer for their phasing preference.

Benchmarks

BM #1: City of Wichita disc adjacent to fire hydrant at SW corner of Lot 134, Block E, Pike Addition.
 Elev. = 1425.30 NAVD88

BM #2: City of Wichita disc adjacent to fire hydrant at SE corner of Lot 139, Block E, Pike Addition.
 Elev. = 1425.59 NAVD88

SANITARY SEWER IMPROVEMENTS to serve **PIKE ADDITION - PH. 3**

CITY OF WICHITA, KANSAS

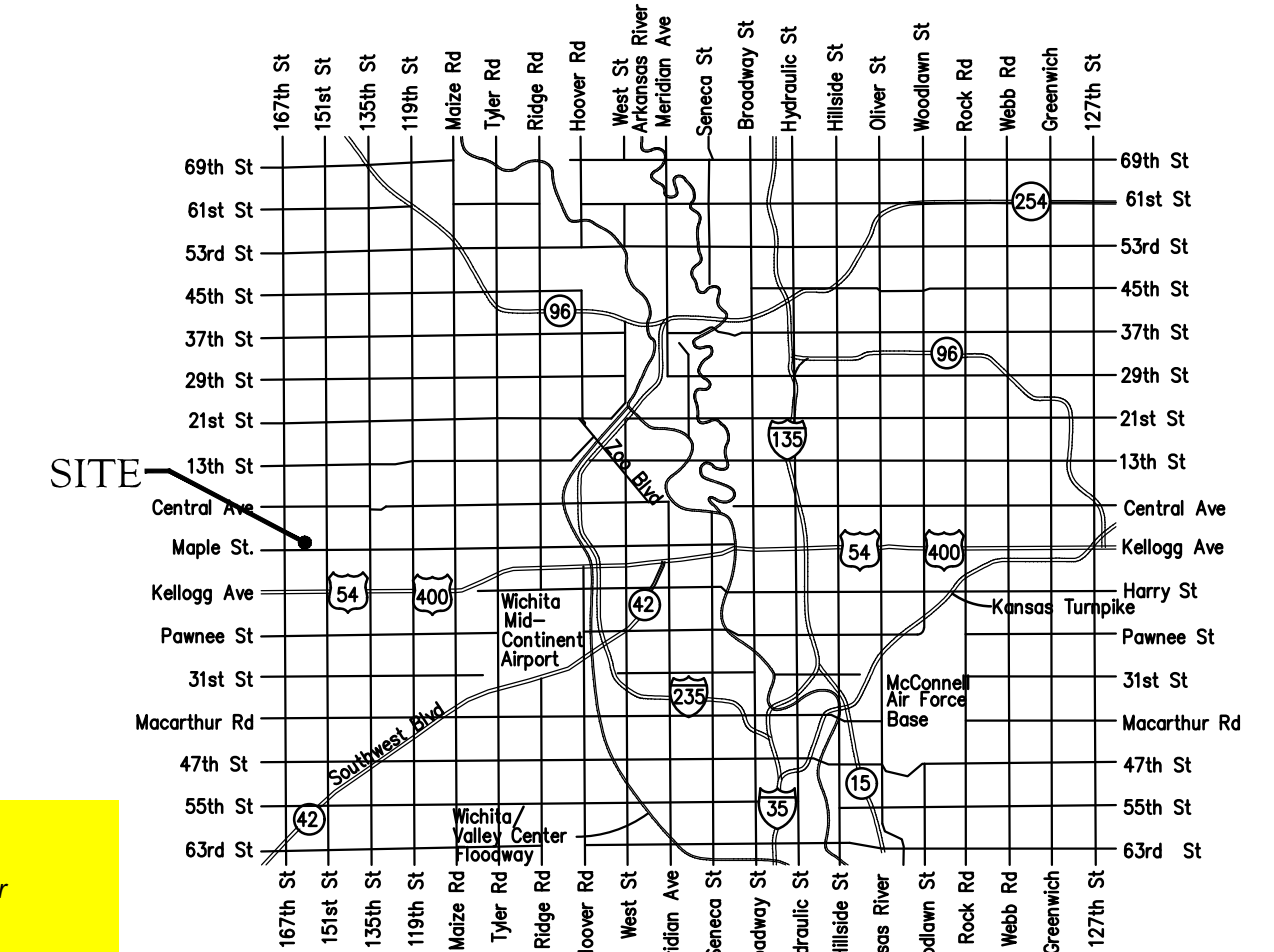
Gary Janzen, P.E. City Engineer

Project Number
 468-2020-008356

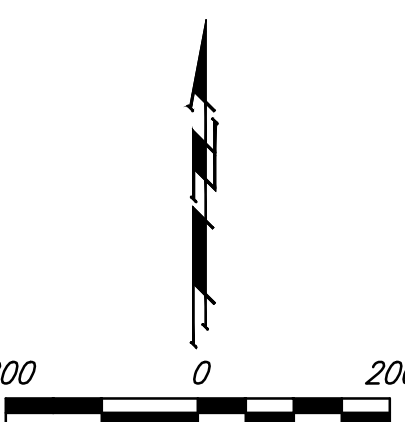
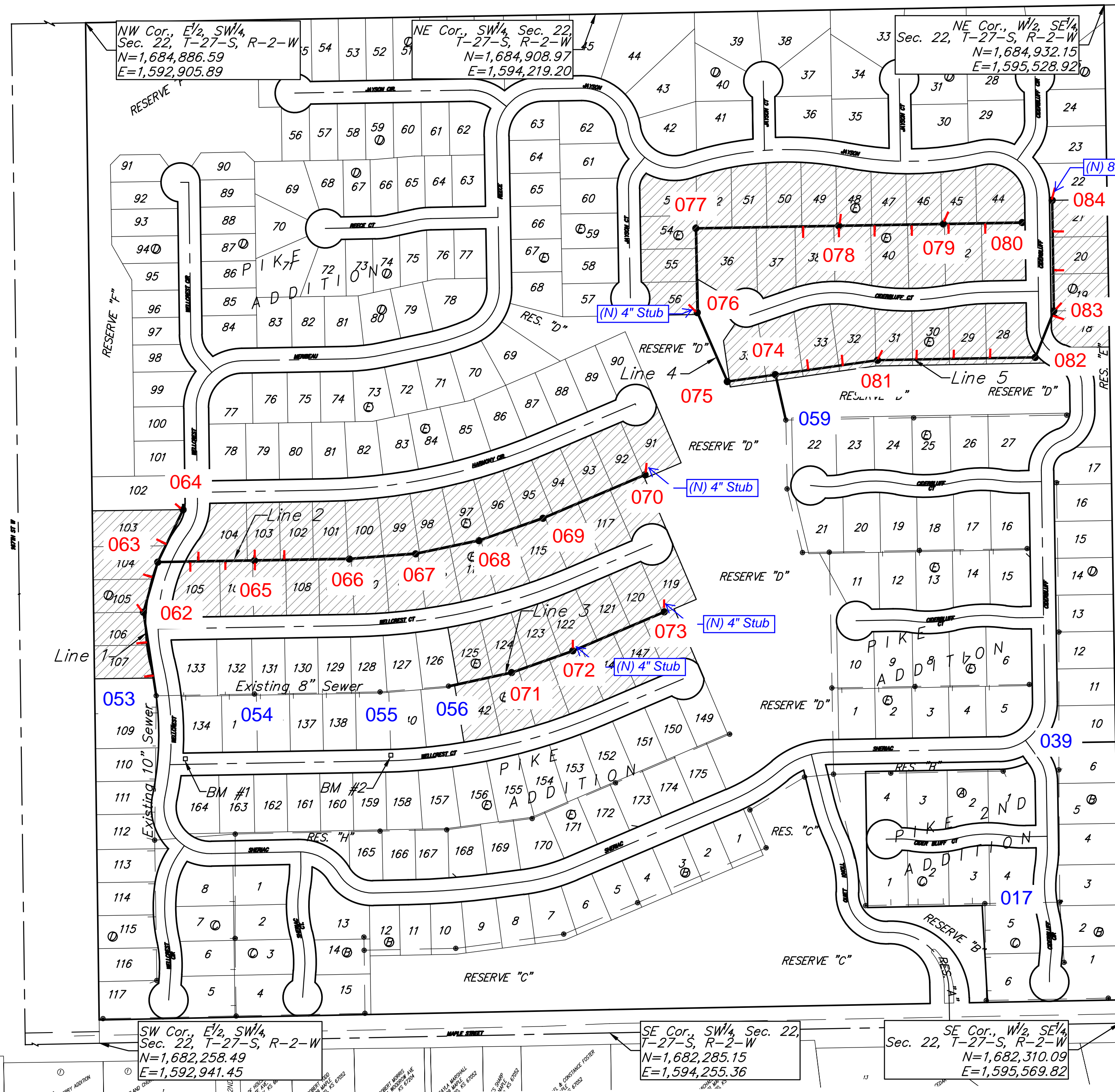
Org Code 47259119
 Munis Number E0098

4447C
 Basin: SWI-14

Nowak Construction - Contractor
 K. Kerns - City of Wichita, Field Project Engineer
 R. Carrillo - City of Wichita, Inspector
 As-built
 Stubs & Risers
 Release Date (for connection purposes only): 5/6/2022
 Completion Date:
 pdf, apr 5/9/2022



Vicinity Map



Sheet Index

Title Sheet	1
Line 1	2
Line 2	3-4
Line 3	5
Line 4	6-7
Line 5	8-9
Erosion Control Plan	10
Precast SS Manhole Detail	11
Manhole Frame & Cover Detail	12
Vertical Riser Detail	13
Erosion Control BMP Details	14-18
Coordinate Sheet	19-20
Copy of Plat	21-22

APPROVED AS NOTED
 BY WICHITA PUBLIC WORKS ENGINEERING DIVISION
 Engineering *Shawn Melvin* 8-2-2021
 An approved copy of these plans signed by City staff are required on-site.



Benefit District

BAUGHMAN COMPANY
 315 Ellis St. Wichita, KS 67211 316-262-7271
 BaughmanCo.com

July 27, 2021

Sanitary Sewer Riser Location Table

Project Name: Pike Add. Ph. 3

Project Location: Maple E. at 1167th

Project No.: 468-2020-008356

OCA No.: 47259119/E0098

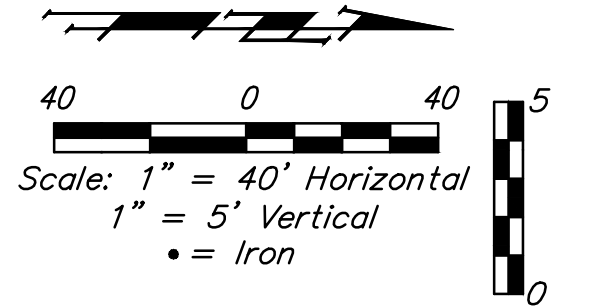
Contractor: Nowak

Inspector: R Carrillo

Riser No.	Line No.	Station	Distance from Main to Riser (Lt./Rt.)	Distance from	
				Upstream MH	Downstream MH
1	1	0+53.3	15.8 LT	164.5	153.3
2	1	1+99.7	18.7 LT	78.1	139.7
3	1	2+17.8	10.7 LT	AT MH	
4	1	3+10.9	17.3 LT	41	93.1
5	1	4+03.2	6.8 LT	98.8	51.3
6	1	5+02	12.1 LT	AT MH	
7	2	0+83.2	7 RT	166	83.2
8	2	1+04.2	13.1 IT	145	104.2
9	2	1+74.2	7 RT	75	174.2
10	2	2+49.2	13 LT	AT MH	
11	2	2+49.2	6.9 RT	AT MH	
12	2	3+25.6	13 LT	167.9	76.4
13	2	12+92.2	15 LT	AT MH	
14	3	3+33.6	7 LT	AT MH	
15	3	5+89.5	7.5 LT	AT MH	
16	4	4+38.9	8.5 LT	AT MH	
17	4	9+31.4	13 RT	92.6	275.4
18	4	10+24	7.4 LT	AT MH	
19	4	10+24	13.1 RT	AT MH	
20	4	11+16.4	13 RT	177.6	92.4
21	4	12+11.4	13 RT	82.6	187.4
22	4	12+94	7.5 LT	AT MH	
23	4	13+06.4	13 RT	190.2	12.4
24	4	14+01.4	13 RT	95.2	107.4
25	5	0+85	5 LT	180.7	85
26	5	1+75	5 LT	90.7	175
27	5	2+65.7	5 LT	AT MH	
28	5	3+65.7	5 LT	306.2	100
29	5	4+60.7	5 LT	211.2	195
30	5	5+55.7	5 LT	116.2	290

BENCHMARKS:
 BM #1: City of Wichita disc adjacent to fire hydrant at SW corner of Lot 134, Block E, Pike Addition.
 Elev. = 1425.30 NAVD88

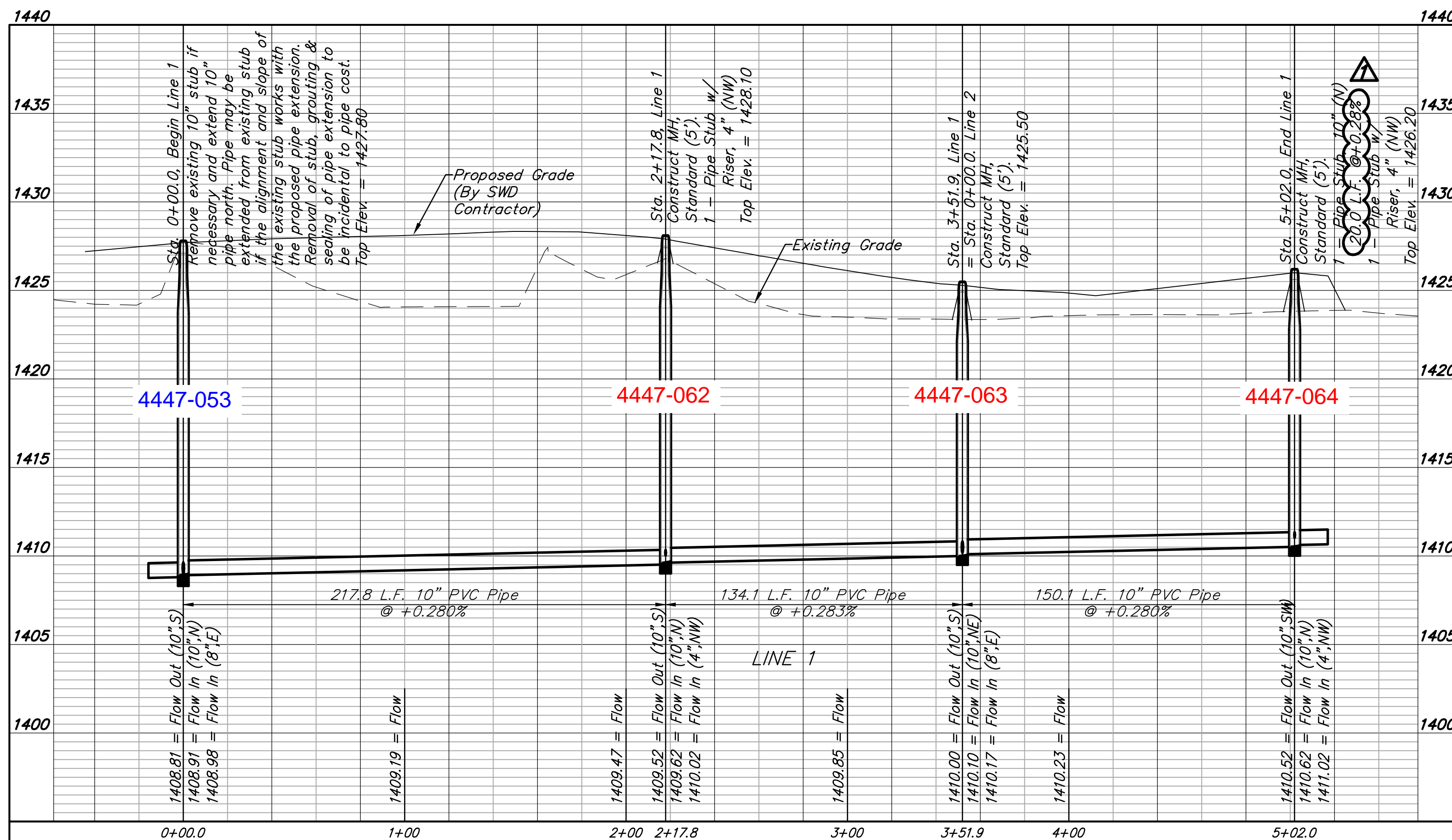
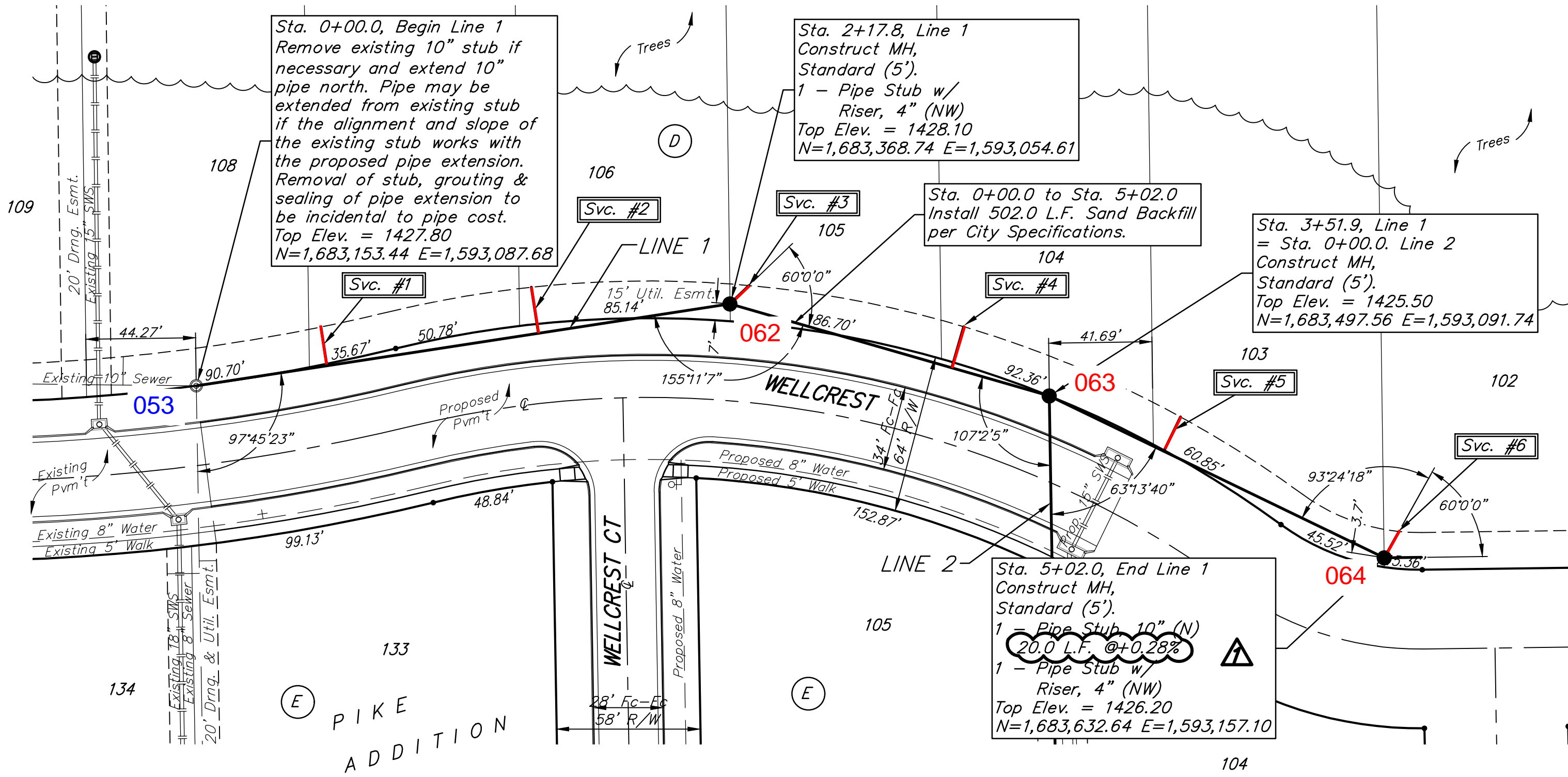
BM #2: City of Wichita disc adjacent to fire hydrant at SE corner of Lot 139, Block E, Pike Addition.
 Elev. = 1425.59 NAVD88



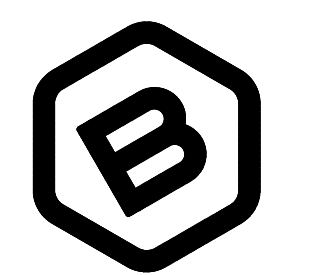
SEWER SERVICE TABLE

Distance from Main to Riser (L/Rt.)	Distance from		NUMBER	TYPE	LOCATION			FOR INFORMATION ONLY		
	Upstream MH	Downstream MH			LOT NO.	BLOCK NO.	LINE NO.	STATION \ DIRECTION	APPROXIMATE LENGTH 4" PIPE	VERTICAL
16' Lt.	164.5'	53'	1	10" X 4" Tee W/Riser	107	D	1	0+53.3/Lt.	15.0'	15.8'
19' Lt.	78'	140'	2	10" X 4" Tee W/Riser	106	D	1	1+39.7/Lt.	15.0'	18.8'
11' Lt.	@ mh		3	4" Stub W/Riser	105	D	1	2+17.8/Lt.	14.5'	10.7'
17' Lt.	41'	93'	4	10" X 4" Tee W/Riser	104	D	1	3+10.9/Lt.	12.5'	17.3'
7' Lt.	99'	52'	5	10" X 4" Tee W/Riser	103	D	1	4+03.2/Lt.	10.5'	6.7'
12' Lt.	@mh		6	4" Stub W/Riser	102	D	1	5+02.0/Lt.	11.5'	12.2'

NOTE: Vertical Riser Pipe shall be extended to 2' minimum above ground water elevation and 4' maximum below proposed ground elevation.



Contractor shall verify elevation and alignment of existing 10" pipe prior to construction and notify Engineer of any discrepancy.



BAUGHMAN COMPANY
 315 Ellis St.
 Wichita, KS 67211
 316-262-7271
 BaughmanCo.com

PIKE ADDITION
 Phase 3

LINE 1

SANITARY SEWER IMPROVEMENTS

PROJECT NUMBER:
 20-11-E769

DESIGN: AEG DRAWN: TMS

DATE: July 20, 2021

SHEET **2** OF **22**

File: E:\Projects\Pike Addition - Engineering\Phase 3\Sewer\Sewer Revised.dwg

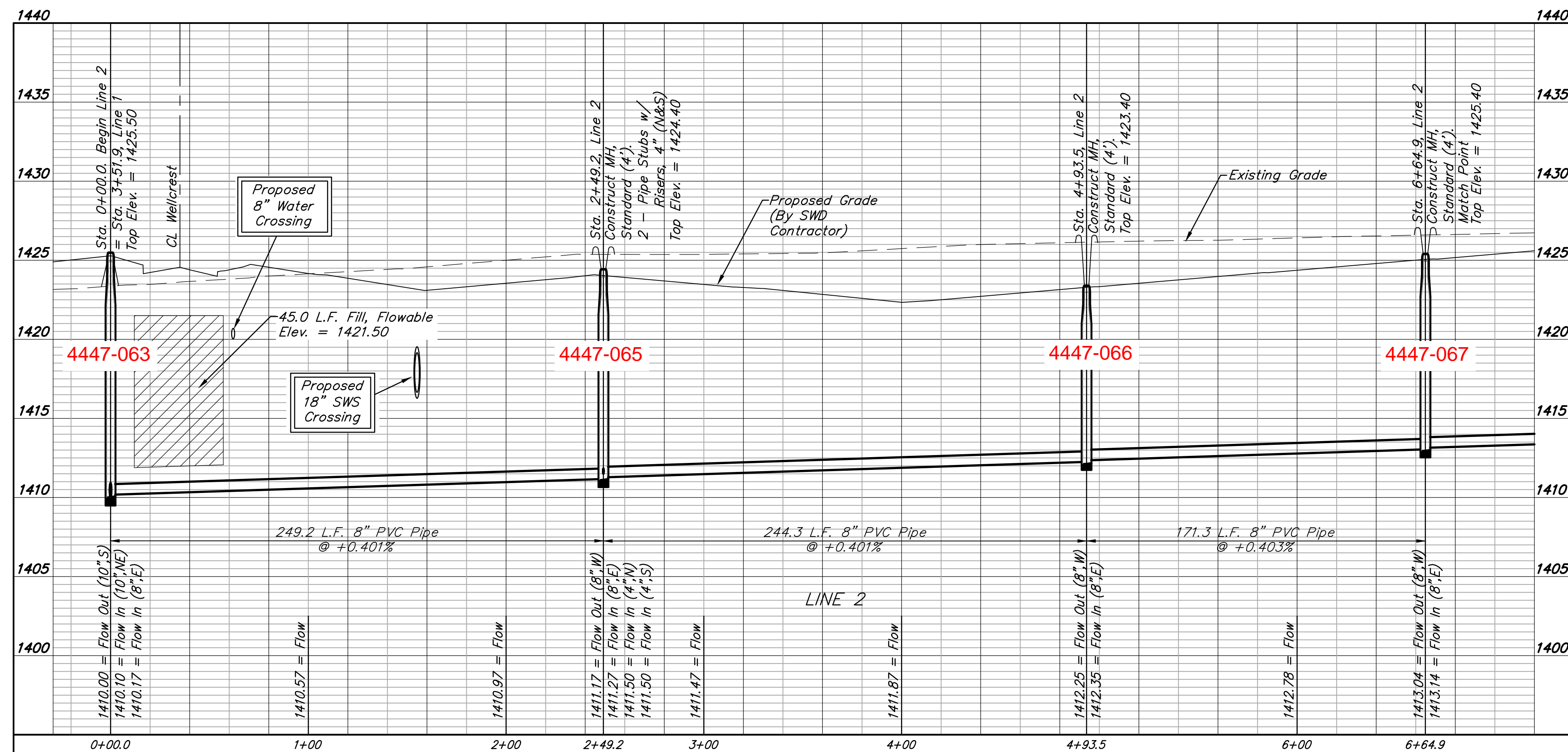
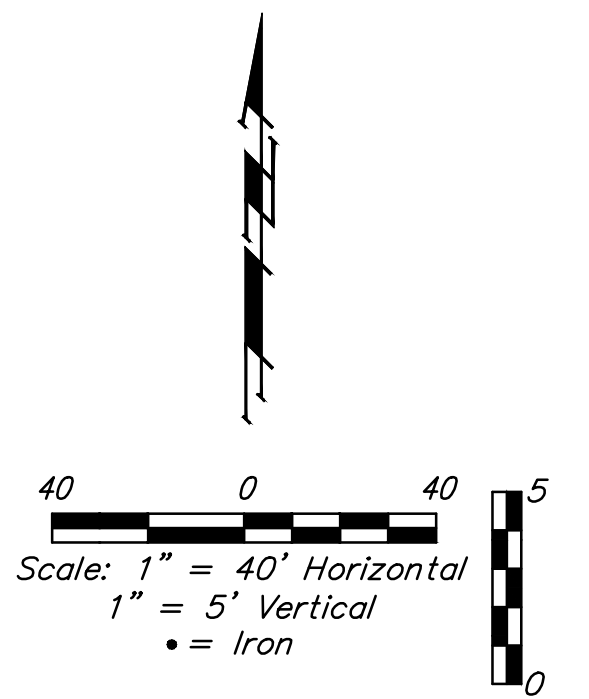
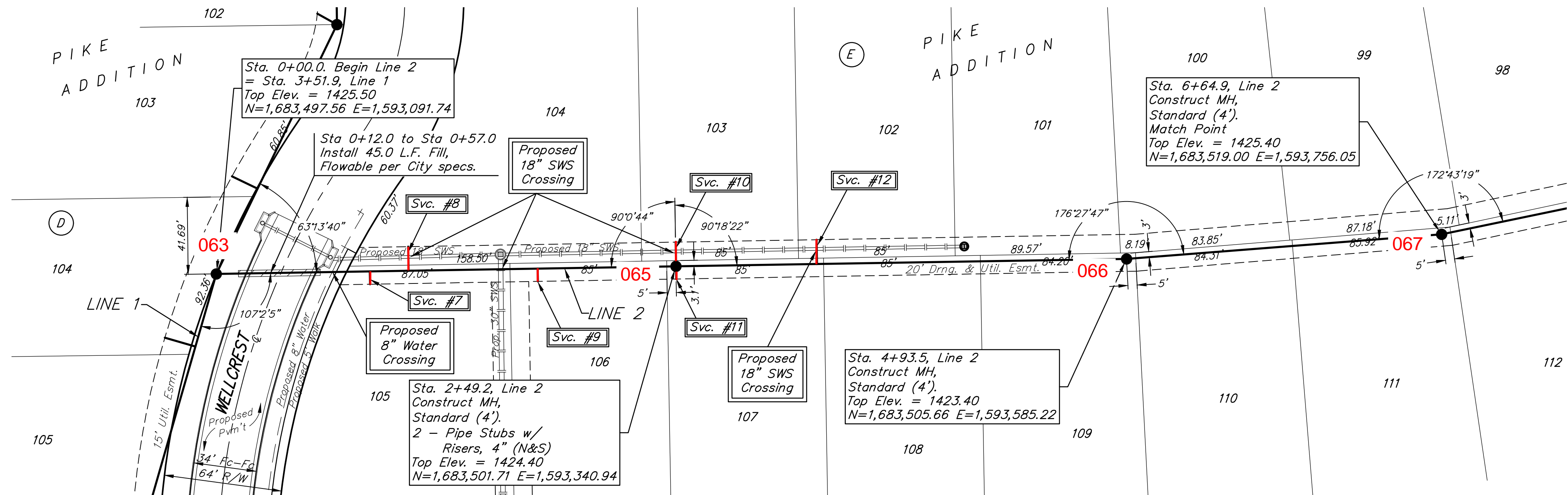
BENCHMARKS:
 BM #1: City of Wichita disc adjacent to fire hydrant at SW corner of Lot 134, Block E, Pike Addition.
 Elev. = 1425.30 NAVD88

BM #2: City of Wichita disc adjacent to fire hydrant at SE corner of Lot 139, Block E, Pike Addition.
 Elev. = 1425.59 NAVD88

SEWER SERVICE TABLE

Distance from Main to Riser (L/Rt.)	Distance from		NUMBER	TYPE	LOCATION			FOR INFORMATION ONLY		
	Upstream MH	Downstream MH			LOT NO.	BLOCK NO.	LINE NO.	STATION \ DIRECTION	APPROXIMATE LENGTH 4" PIPE	VERTICAL
7' Rt.	166'	83'	7	8" X 4" Tee W/Riser	105	E	2	0+83.2/Rt.	9.5'	7.0'
13' Lt.	145'	104'	8	8" X 4" Tee W/Riser	104	E	2	1+04.2/Lt.	9.5'	13.0'
7' Rt.	75'	174'	9	8" X 4" Tee W/Riser	106	E	2	1+74.2/Rt.	9.0'	7.0'
13' Lt.	@ mh		10	4" Stub W/Riser	103	E	2	2+49.2/Lt.	9.0'	13.0'
7' Rt.	@ mh		11	4" Stub W/Riser	107	E	2	2+49.2/Rt.	9.0'	7.0'
13' Lt.	168'	76'	12	8" X 4" Tee W/Riser	102	E	2	3+25.6/Lt.	9.0'	13.0'

NOTE: Vertical Riser Pipe shall be extended to 2' minimum above ground water elevation and 4' maximum below proposed ground elevation.



BAUGHMAN COMPANY
 315 Ellis St.
 Wichita, KS 67211
 316-262-7271
 BaughmanCo.com

PIKE ADDITION
 Phase 3

LINE 2

 SANITARY SEWER
 IMPROVEMENTS
 PROJECT NUMBER:
 20-11-E769
 DESIGN: AEG DRAWN: TMS
 DATE: July 19, 2021
 SHEET **3** OF **22**

File: E:\Projects\Pike Addition_Engineering\Phase 3\Sewer\Sewer.dwg

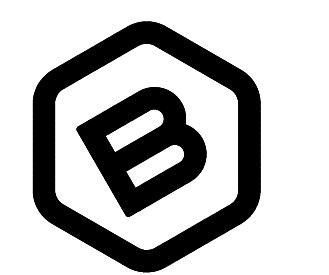
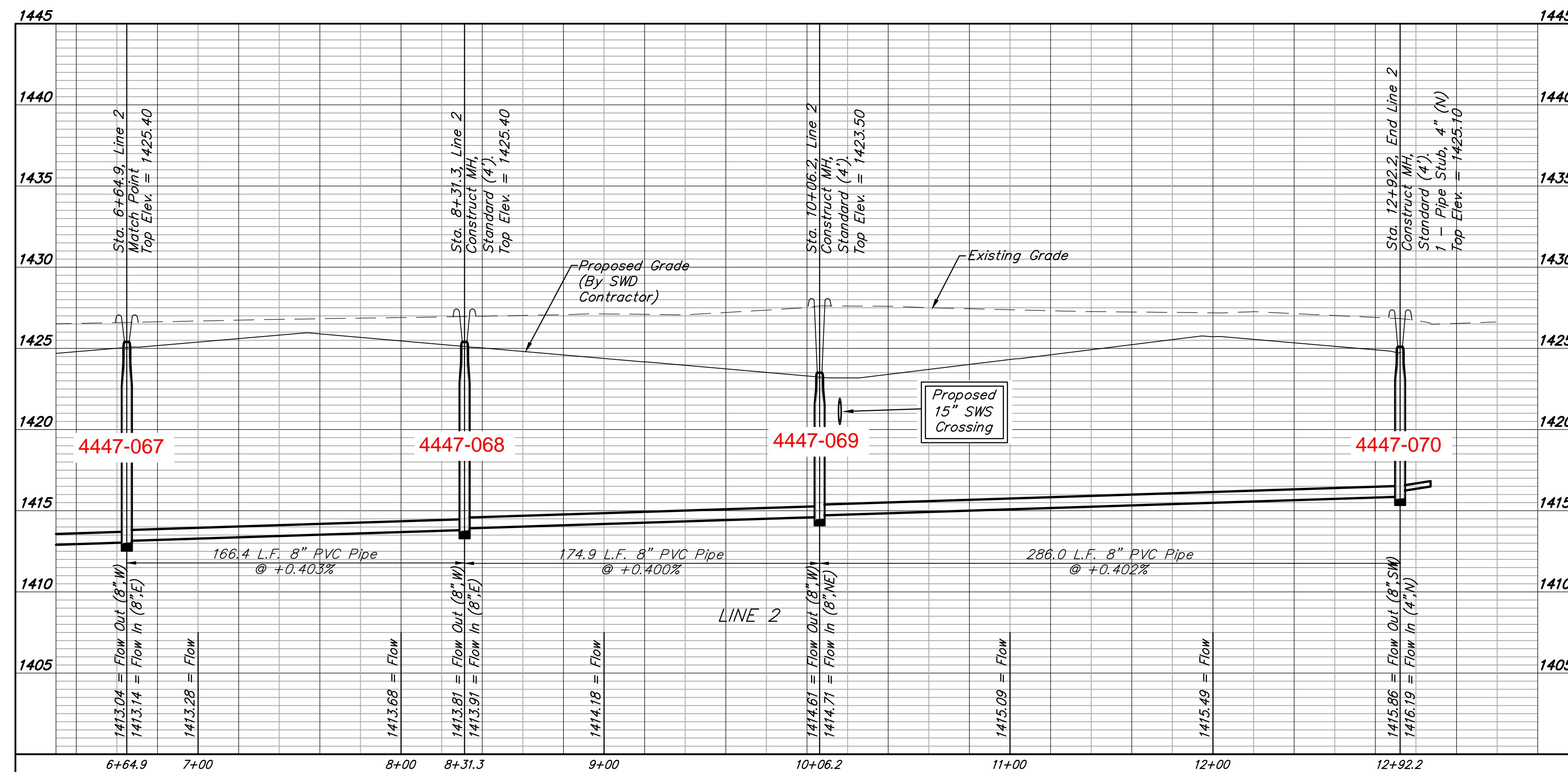
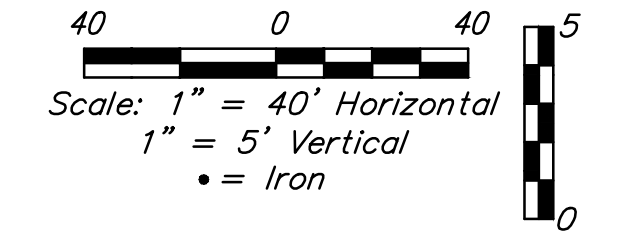
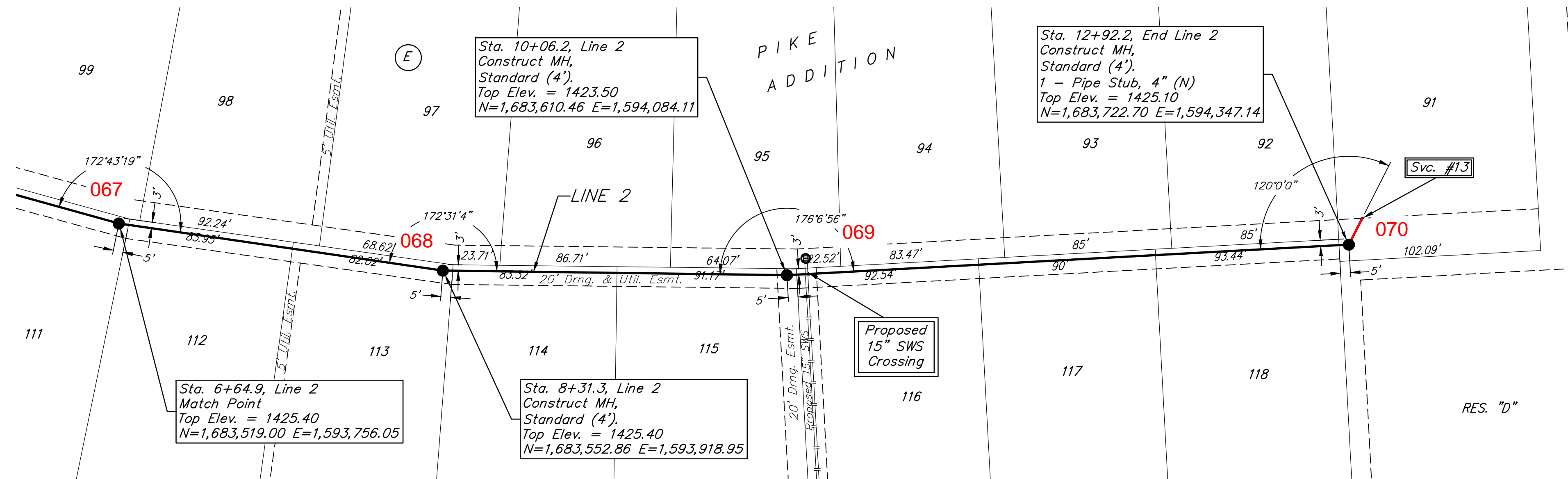
BENCHMARKS:
 BM #1: City of Wichita disc adjacent to fire hydrant at SW corner of Lot 134, Block E, Pike Addition.
 Elev. = 1425.30 NAVD88

BM #2: City of Wichita disc adjacent to fire hydrant at SE corner of Lot 139, Block E, Pike Addition.
 Elev. = 1425.59 NAVD88

SEWER SERVICE TABLE

NUMBER	TYPE	LOCATION			FOR INFORMATION ONLY		
		LOT NO.	BLOCK NO.	LINE NO.	STATION \ DIRECTION	APPROXIMATE LENGTH 4" PIPE	
13	4" Stub	91	E	2	12+92.2/Lt.	-	15.0'

NOTE: Vertical Riser Pipe shall be extended to 2' minimum above ground water elevation and 4' maximum below proposed ground elevation.



BAUGHMAN COMPANY
 315 Ellis St.
 Wichita, KS 67211
 316-262-7271
 BaughmanCo.com

PIKE ADDITION
 Phase 3

LINE 2

SANITARY SEWER IMPROVEMENTS

PROJECT NUMBER:
 20-11-E769

DESIGN: AEG DRAWN: TMS
 DATE: July 19, 2021

SHEET **4** OF **22**

File: E:\Projects\Pike Addition_Engineering\Phase 3\Sewer\Sewer.dwg

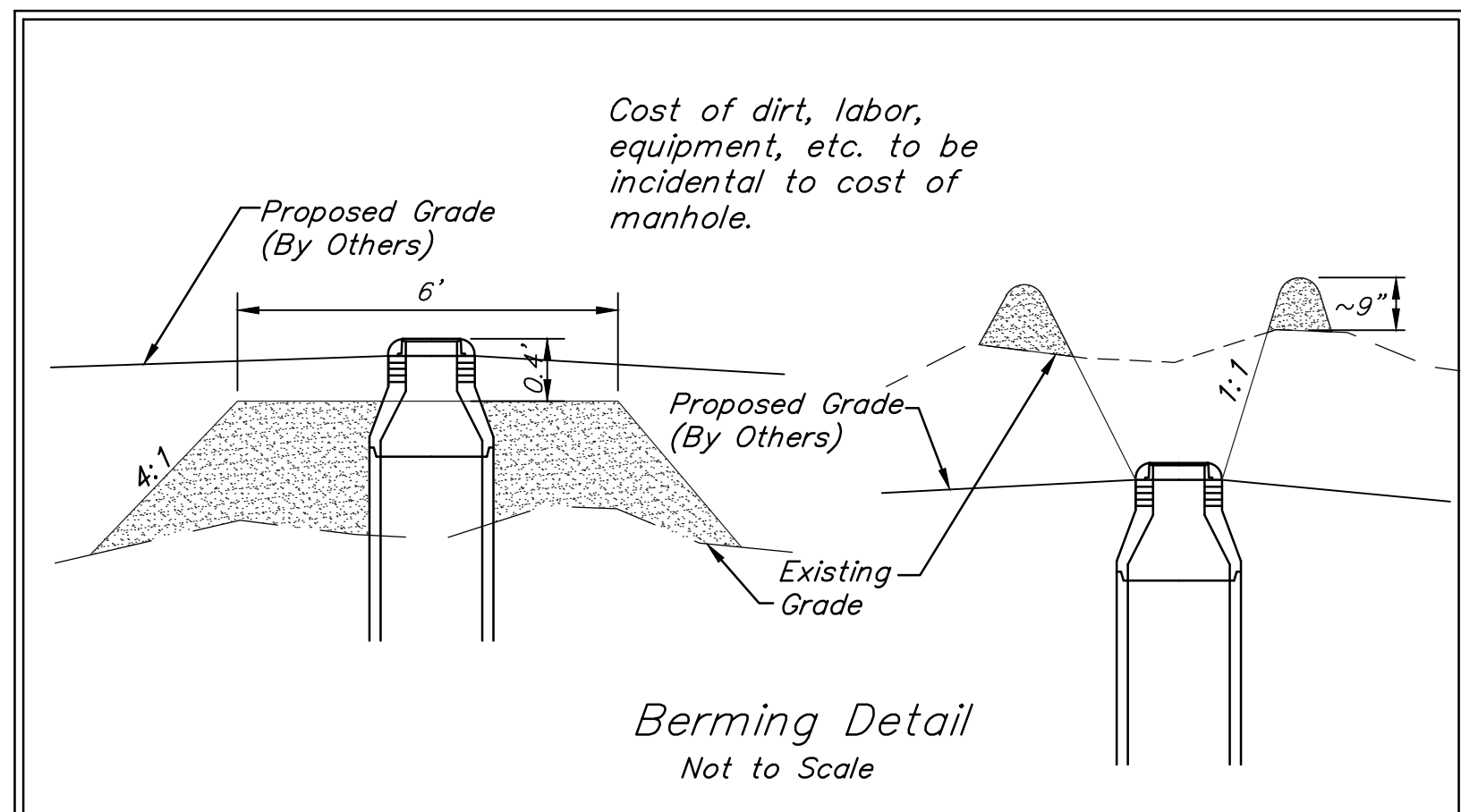
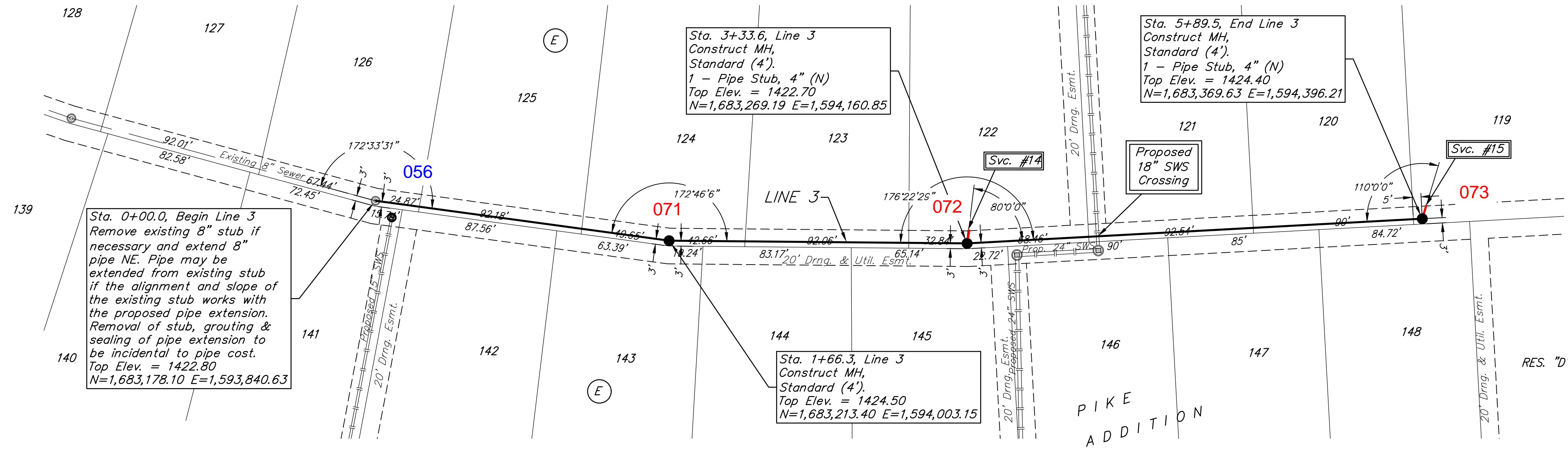
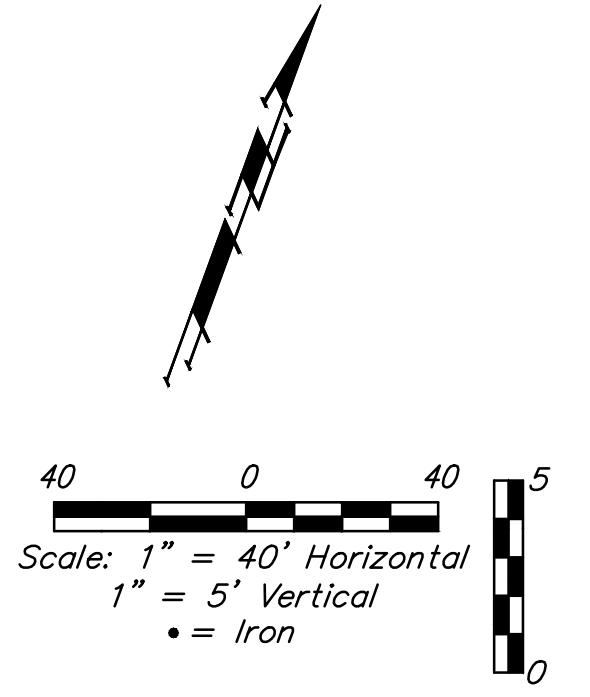
BENCHMARKS:
 BM #1: City of Wichita disc adjacent to fire hydrant at SW corner of Lot 134, Block E, Pike Addition.
 Elev. = 1425.30 NAVD88

BM #2: City of Wichita disc adjacent to fire hydrant at SE corner of Lot 139, Block E, Pike Addition.
 Elev. = 1425.59 NAVD88

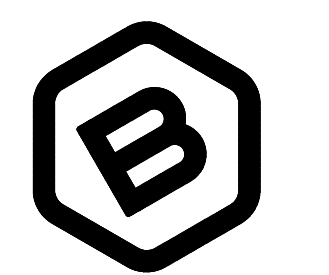
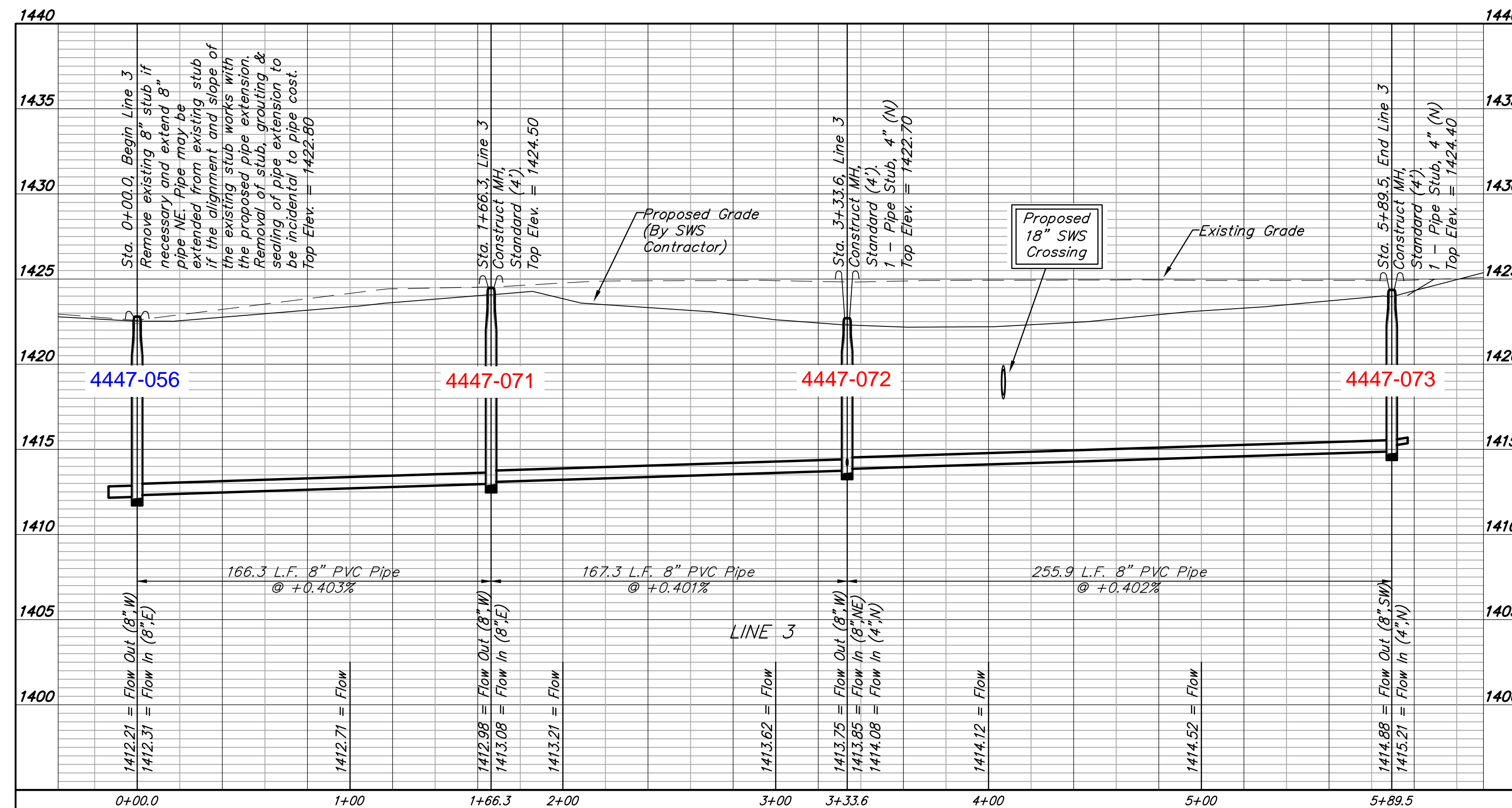
SEWER SERVICE TABLE

NUMBER	TYPE	LOCATION				FOR INFORMATION ONLY	
		LOT NO.	BLOCK NO.	LINE NO.	STATION DIRECTION	APPROXIMATE LENGTH 4" PIPE	VERTICAL HORIZONTAL
14	4" Stub	122	E	3	3+33.6/Lt.	-	7.1'
15	4" Stub	119	E	3	5+89.5/Lt.	-	7.5'

NOTE: Vertical Riser Pipe shall be extended to 2' minimum above ground water elevation and 4' maximum below proposed ground elevation.



Contractor shall verify elevation and alignment of existing 8" pipe prior to construction and notify Engineer of any discrepancy.



BAUGHMAN COMPANY
 315 Ellis St.
 Wichita, KS 67211
 316-262-7271
 BaughmanCo.com

PIKE ADDITION
 Phase 3

LINE 3

SANITARY SEWER IMPROVEMENTS

PROJECT NUMBER:
 20-11-E769

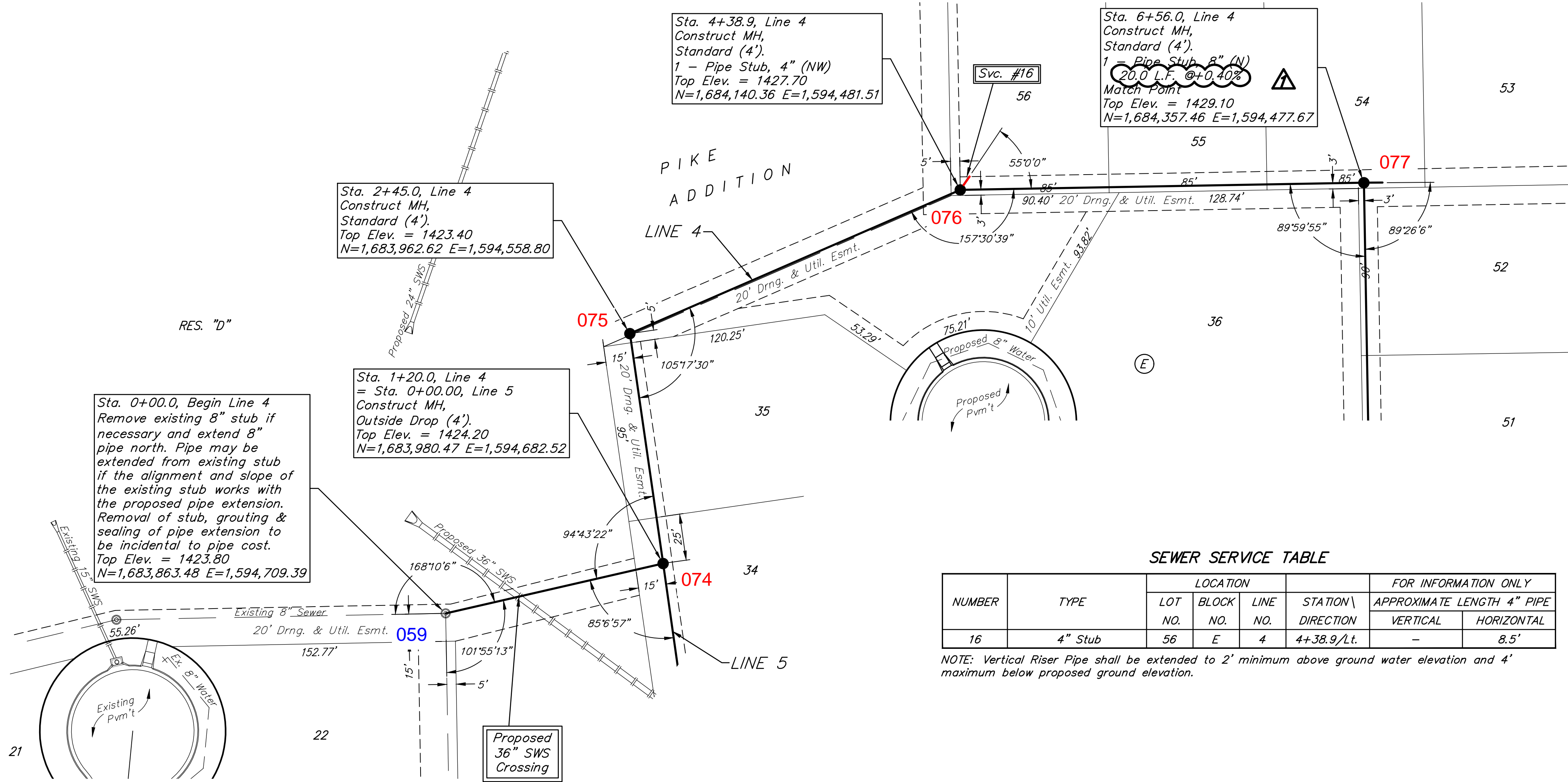
DESIGN: AEG DRAWN: TMS
 DATE: July 19, 2021

SHEET **5** OF **22**

File: E:\Projects\Pike Addition - Engineering\Phase 3\Sewer\Sewer.dwg

BENCHMARKS:
 BM #1: City of Wichita disc adjacent to fire hydrant at SW corner of Lot 134, Block E, Pike Addition.
 Elev. = 1425.30 NAVD88

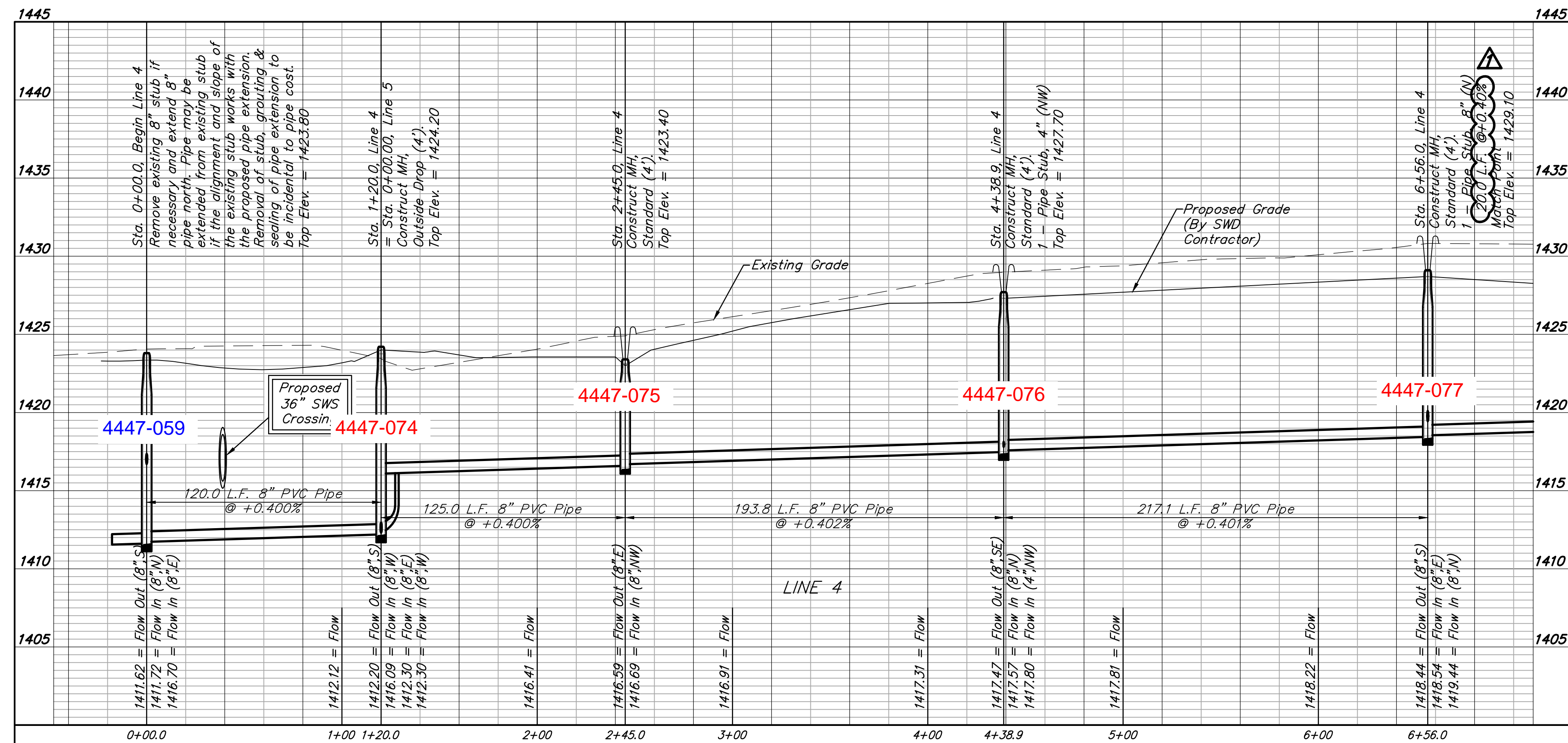
BM #2: City of Wichita disc adjacent to fire hydrant at SE corner of Lot 139, Block E, Pike Addition.
 Elev. = 1425.59 NAVD88



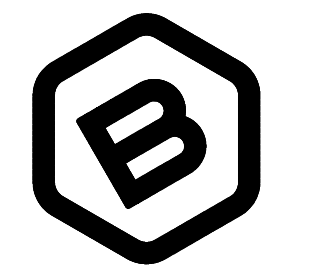
SEWER SERVICE TABLE

NUMBER	TYPE	LOCATION			FOR INFORMATION ONLY	
		LOT NO.	BLOCK NO.	LINE NO.	STATION\ DIRECTION	APPROXIMATE LENGTH 4" PIPE
16	4" Stub	56	E	4	4+38.9/Lt.	VERTICAL: - HORIZONTAL: 8.5'

NOTE: Vertical Riser Pipe shall be extended to 2' minimum above ground water elevation and 4' maximum below proposed ground elevation.



Contractor shall verify elevation and alignment of existing 8" pipe prior to construction and notify Engineer of any discrepancy.



BAUGHMAN COMPANY

315 Ellis St.
 Wichita, KS 67211
 316-262-7271
 BaughmanCo.com

PIKE ADDITION
 Phase 3

LINE 4

SANITARY SEWER
 IMPROVEMENTS

PROJECT NUMBER:
 20-11-E769

DESIGN: AEG DRAWN: TMS

DATE: July 20, 2021

SHEET 6 OF 22

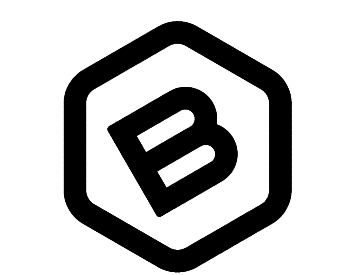
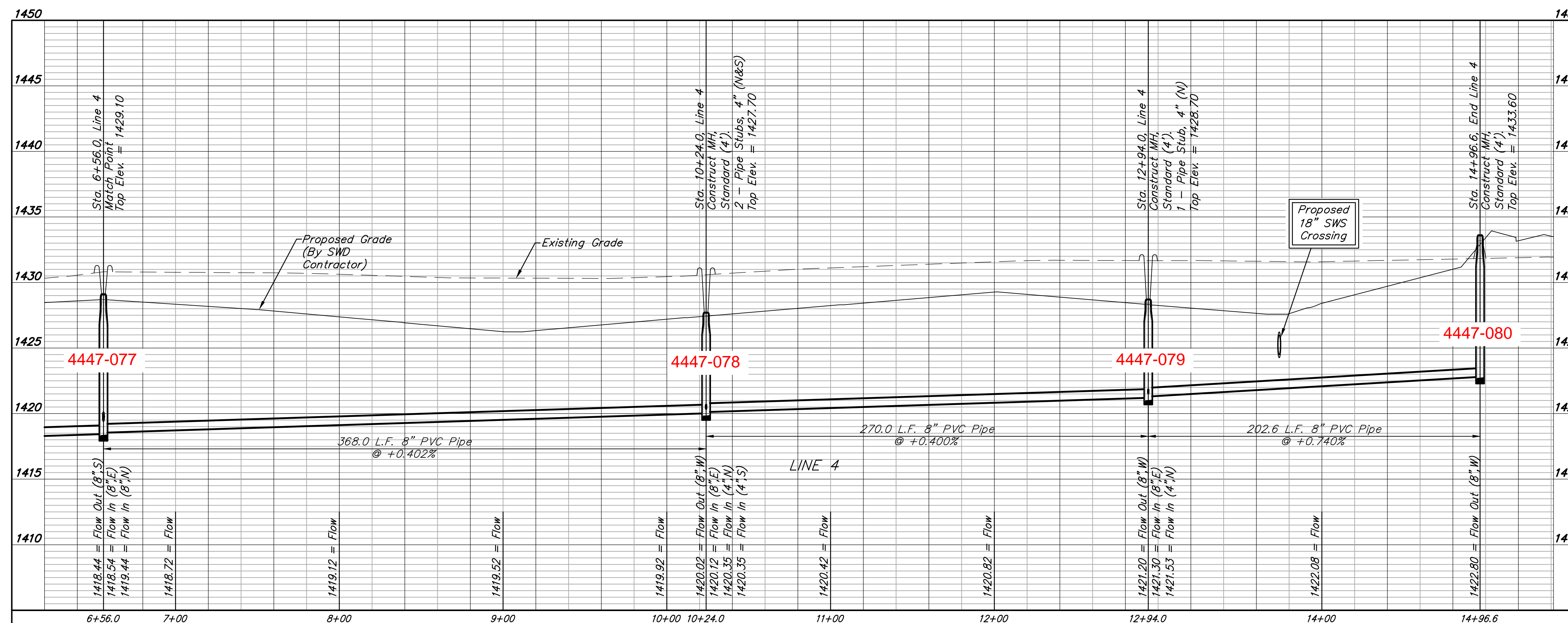
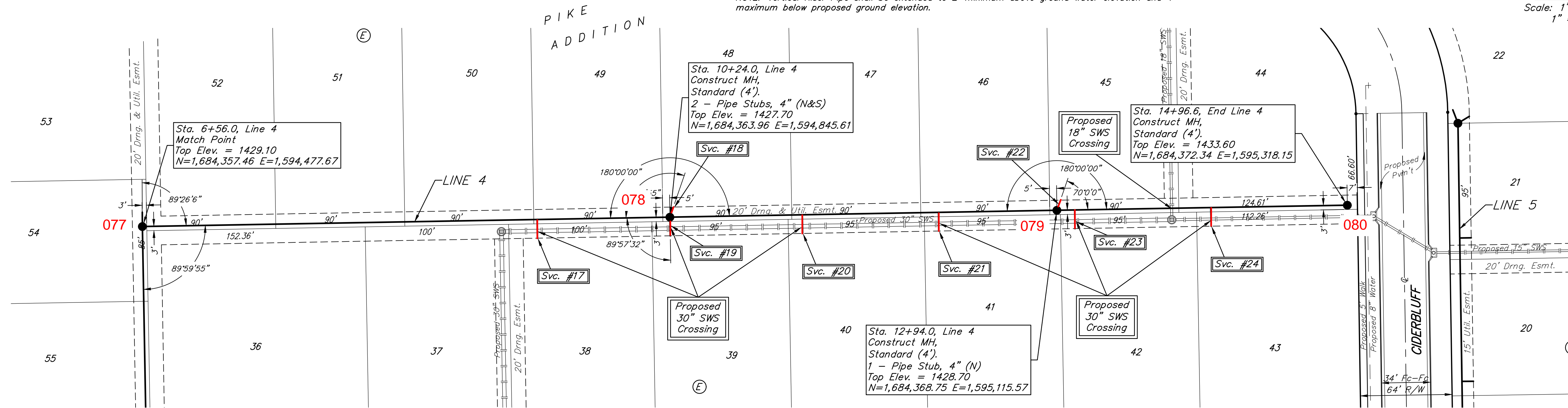
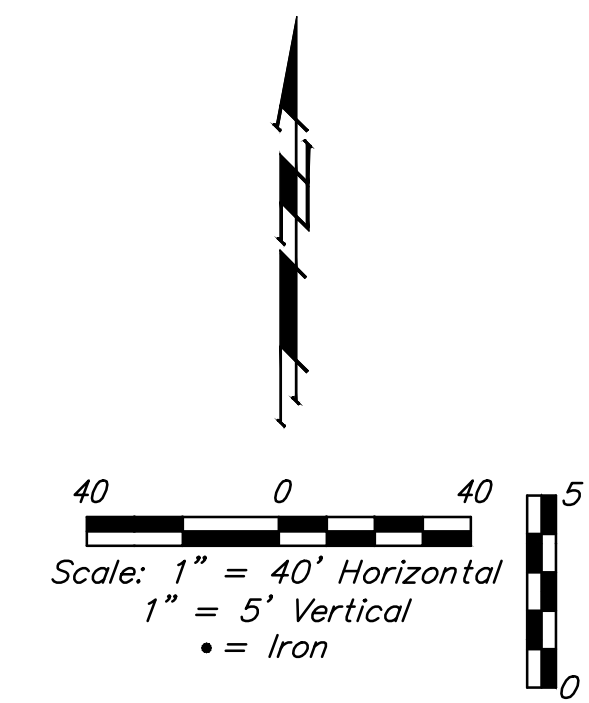
File: E:\Projects\Pike Addition - Engineering\Phase 3\Sewer\Sewer Revised.dwg

SEWER SERVICE TABLE

Distance from Main to Riser (L/L/Rt.)	Distance from		NUMBER	TYPE	LOCATION			FOR INFORMATION ONLY		
	Upstream MH	Downstream MH			LOT NO.	BLOCK NO.	LINE NO.	STATION \ DIRECTION	APPROXIMATE LENGTH 4" PIPE	VERTICAL
13' Rt.	93'	275'	17	8" X 4" Tee W/Riser	38	E	4	9+31.4/Rt.	-	13.0'
7.5' Lt.	@ mh		18	4" Stub	48	E	4	10+24.0/Lt.	-	7.5'
13' Rt.	@ mh		19	4" Stub	39	E	4	10+24.0/Rt.	-	13.0'
13' Rt.	178'	92'	20	8" X 4" Tee W/Riser	40	E	4	11+16.4/Rt.	-	13.0'
13' Rt.	83'	187'	21	8" X 4" Tee W/Riser	41	E	4	12+11.4/Rt.	-	13.0'
7.5' Lt.	@ mh		22	4" Stub	45	E	4	12+94.0/Lt.	-	7.5'
13' Rt.	190'	12'	23	8" X 4" Tee W/Riser	42	E	4	13+06.4/Rt.	-	13.0'
13' Rt.	95'	107'	24	8" X 4" Tee W/Riser	43	E	4	14+01.4/Rt.	-	13.0'

NOTE: Vertical Riser Pipe shall be extended to 2' minimum above ground water elevation and 4' maximum below proposed ground elevation.

BENCHMARKS:
 BM #1: City of Wichita disc adjacent to fire hydrant at SW corner of Lot 134, Block E, Pike Addition.
 Elev. = 1425.30 NAVD88
 BM #2: City of Wichita disc adjacent to fire hydrant at SE corner of Lot 139, Block E, Pike Addition.
 Elev. = 1425.59 NAVD88



BAUGHMAN COMPANY
 315 Ellis St.
 Wichita, KS 67211
 316-262-7271
 BaughmanCo.com

PIKE ADDITION
 Phase 3

LINE 4

SANITARY SEWER IMPROVEMENTS

PROJECT NUMBER:
 20-11-E769

DESIGN: AEG DRAWN: TMS

DATE: July 19, 2021

SHEET **7** OF **22**

File: E:\Projects\Pike Addition - Engineering\Phase 3\Sewer\Sewer.dwg

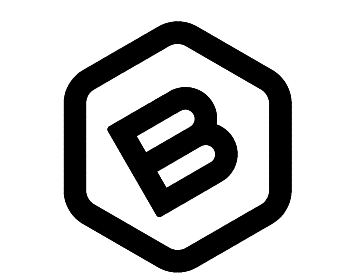
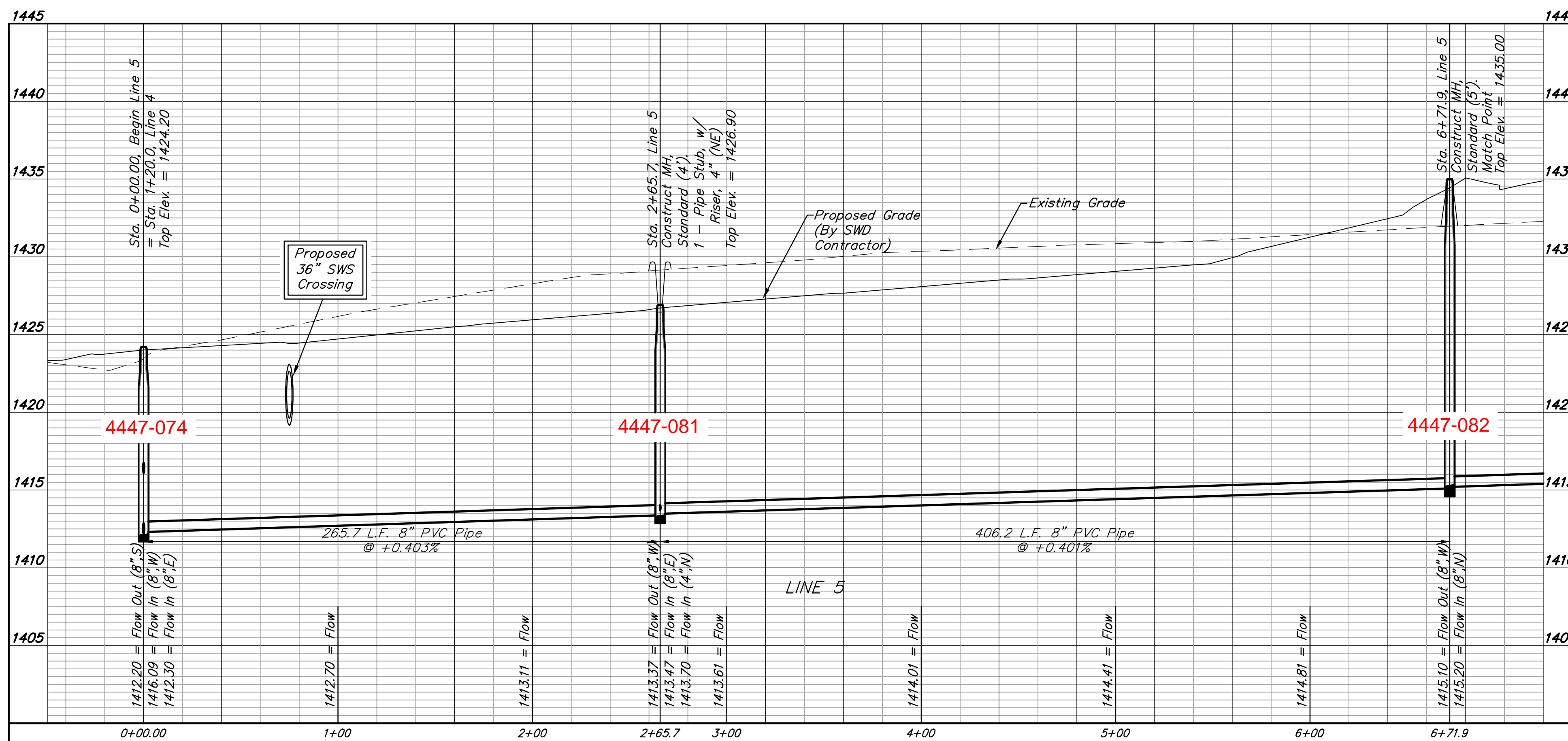
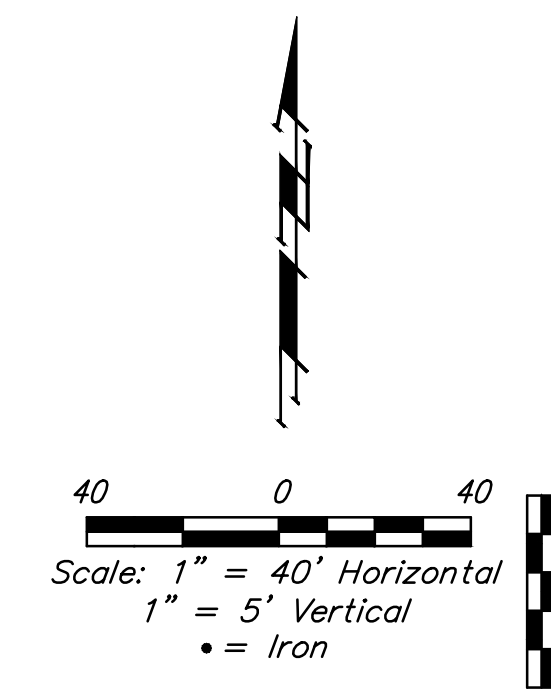
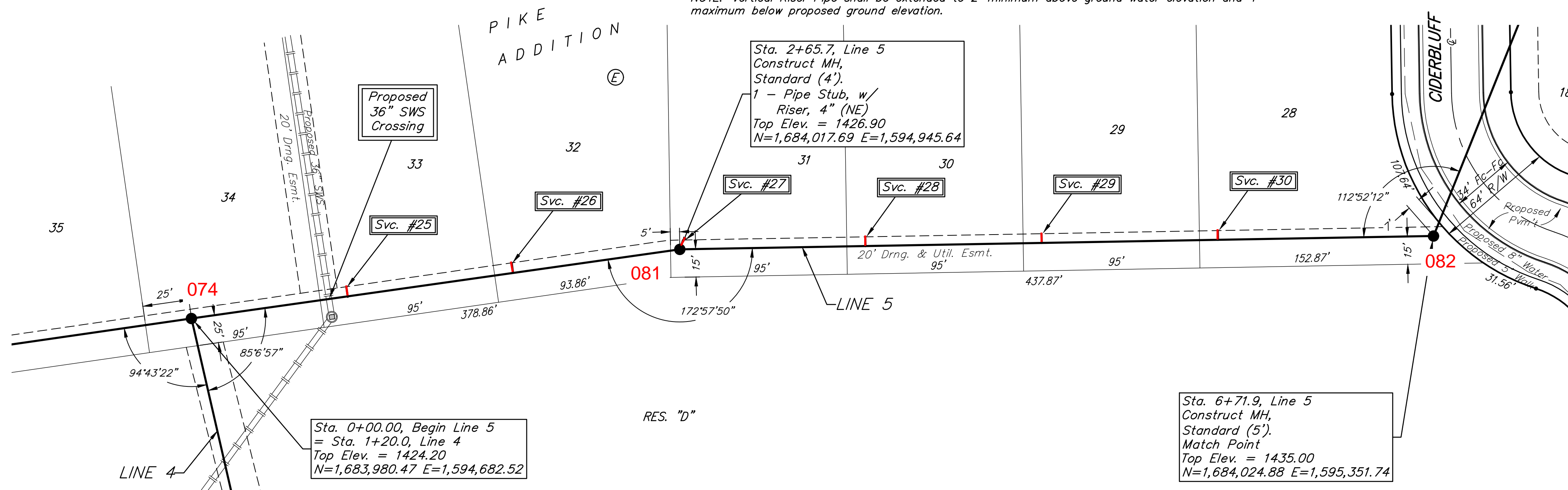
SEWER SERVICE TABLE

Distance from Main to Riser (L/L/Rt)	Distance from		NUMBER	TYPE	LOCATION			FOR INFORMATION ONLY		
	Upstream MH	Downstream MH			LOT NO.	BLOCK NO.	LINE NO.	STATION \ DIRECTION	APPROXIMATE LENGTH 4" PIPE	VERTICAL
5' Lt.	181'	85'	25	8" X 4" Tee W/Riser	33	E	5	0+85.0/Lt.	8.0'	5.0'
5' Lt.	91'	175'	26	8" X 4" Tee W/Riser	32	E	5	1+75.0/Lt.	9.0'	5.0'
5' Lt.	@ mh		27	4" Stub W/Riser	31	E	5	2+65.7/Lt.	9.5'	5.3'
5' Lt.	306'	100'	28	8" X 4" Tee W/Riser	30	E	5	3+65.7/Lt.	10.0'	5.0'
5' Lt.	211'	195'	29	8" X 4" Tee W/Riser	29	E	5	4+60.7/Lt.	10.5'	5.0'
5' Lt.	116'	290'	30	8" X 4" Tee W/Riser	28	E	5	5+55.7/Lt.	11.0'	5.0'

NOTE: Vertical Riser Pipe shall be extended to 2' minimum above ground water elevation and 4' maximum below proposed ground elevation.

BENCHMARKS:
 BM #1: City of Wichita disc adjacent to fire hydrant at SW corner of Lot 134, Block E, Pike Addition.
 Elev. = 1425.30 NAVD88

BM #2: City of Wichita disc adjacent to fire hydrant at SE corner of Lot 139, Block E, Pike Addition.
 Elev. = 1425.59 NAVD88



BAUGHMAN COMPANY
 315 Ellis St.
 Wichita, KS 67211
 316-262-7271
 BaughmanCo.com

PIKE ADDITION
 Phase 3

LINE 5

SANITARY SEWER IMPROVEMENTS

PROJECT NUMBER:
 20-11-E769

DESIGN: AEG DRAWN: TMS

DATE: July 19, 2021

SHEET **8** OF **22**

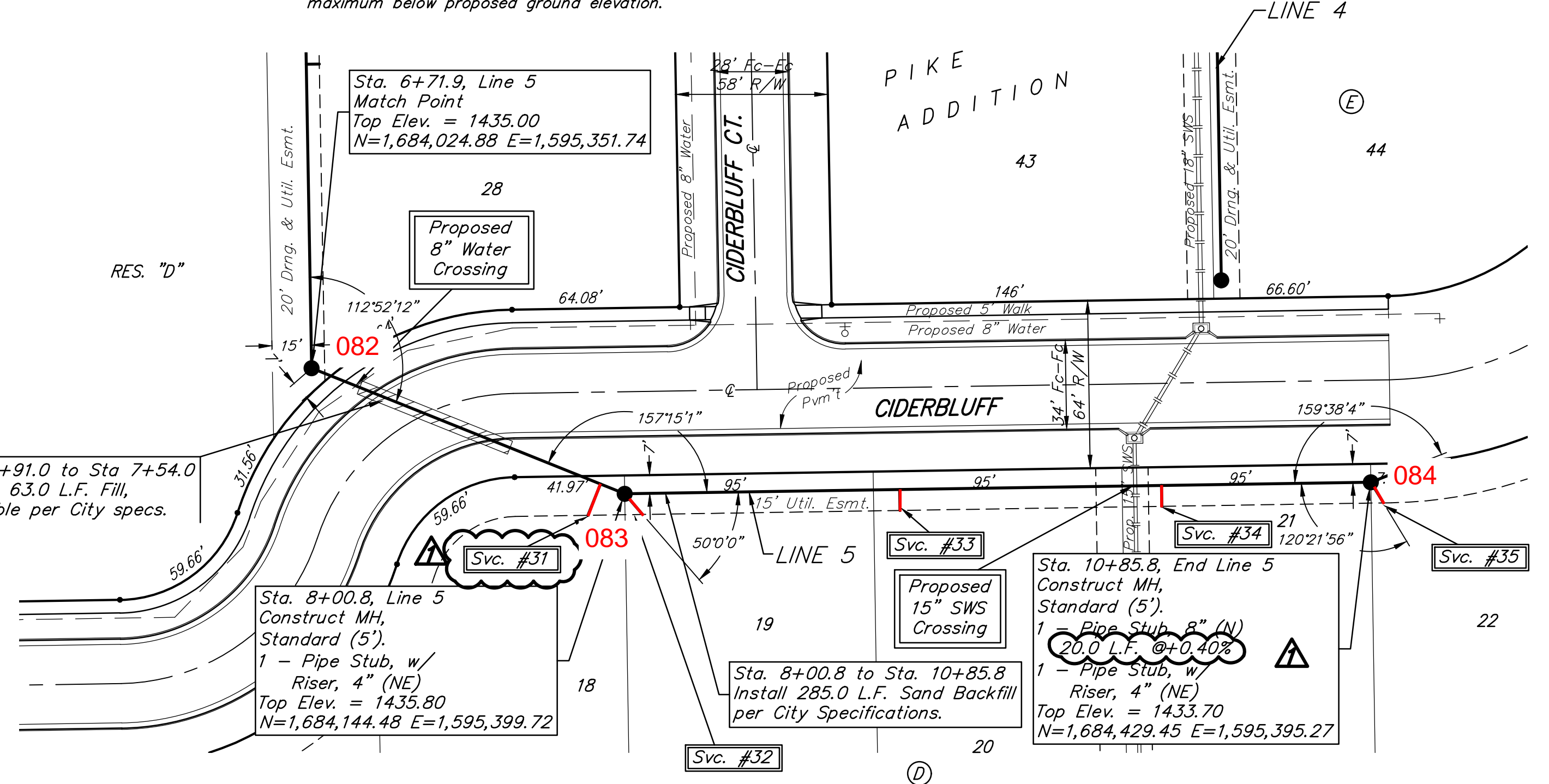
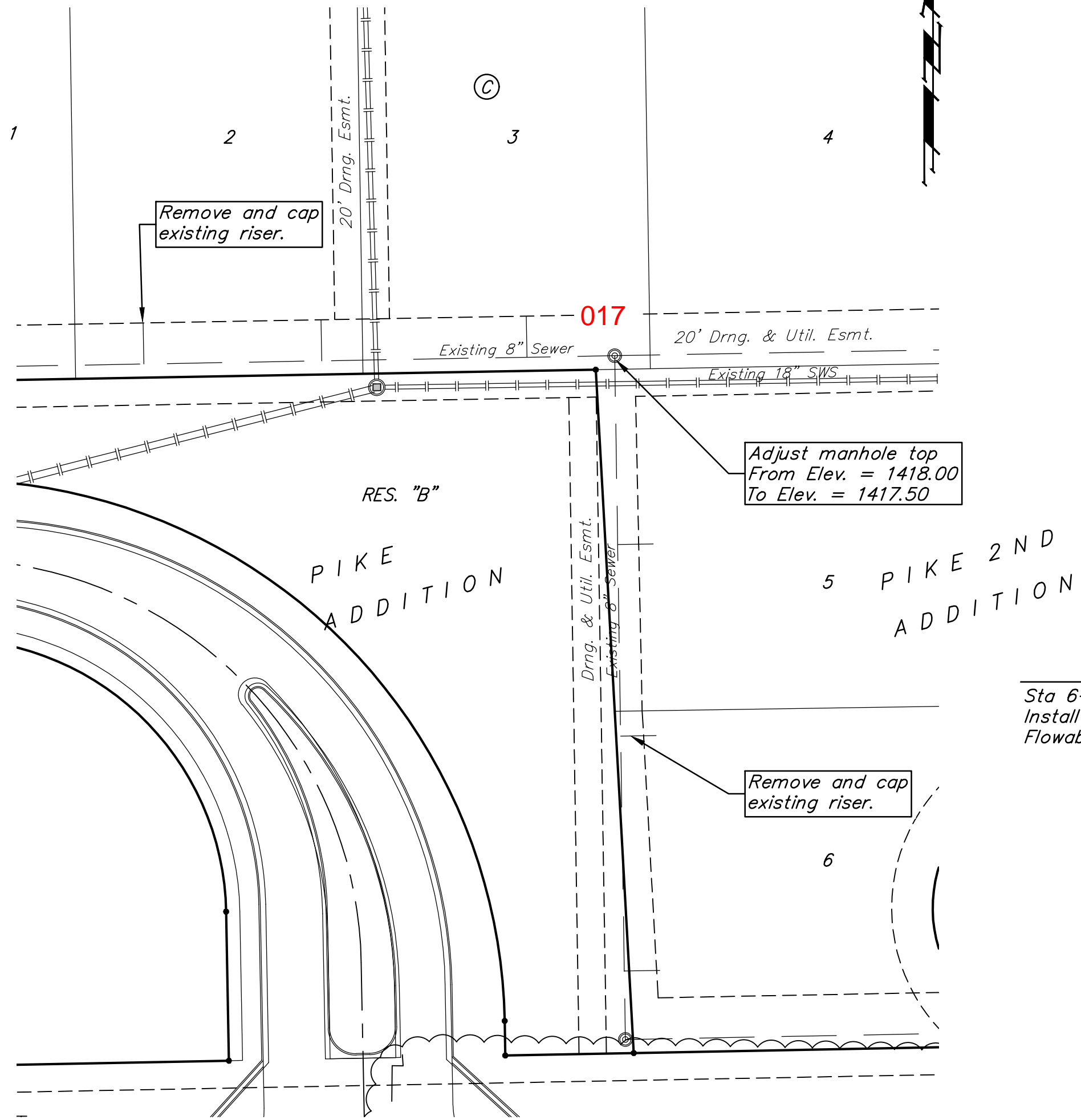
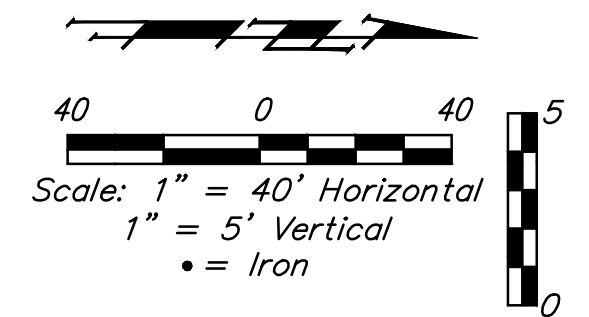
File: E:\Projects\Pike Addition - Engineering\Phase 3\Sewer\Sewer.dwg

BENCHMARKS:
 BM #1: City of Wichita disc adjacent to fire hydrant at SW corner of Lot 134, Block E, Pike Addition.
 Elev. = 1425.30 NAVD88

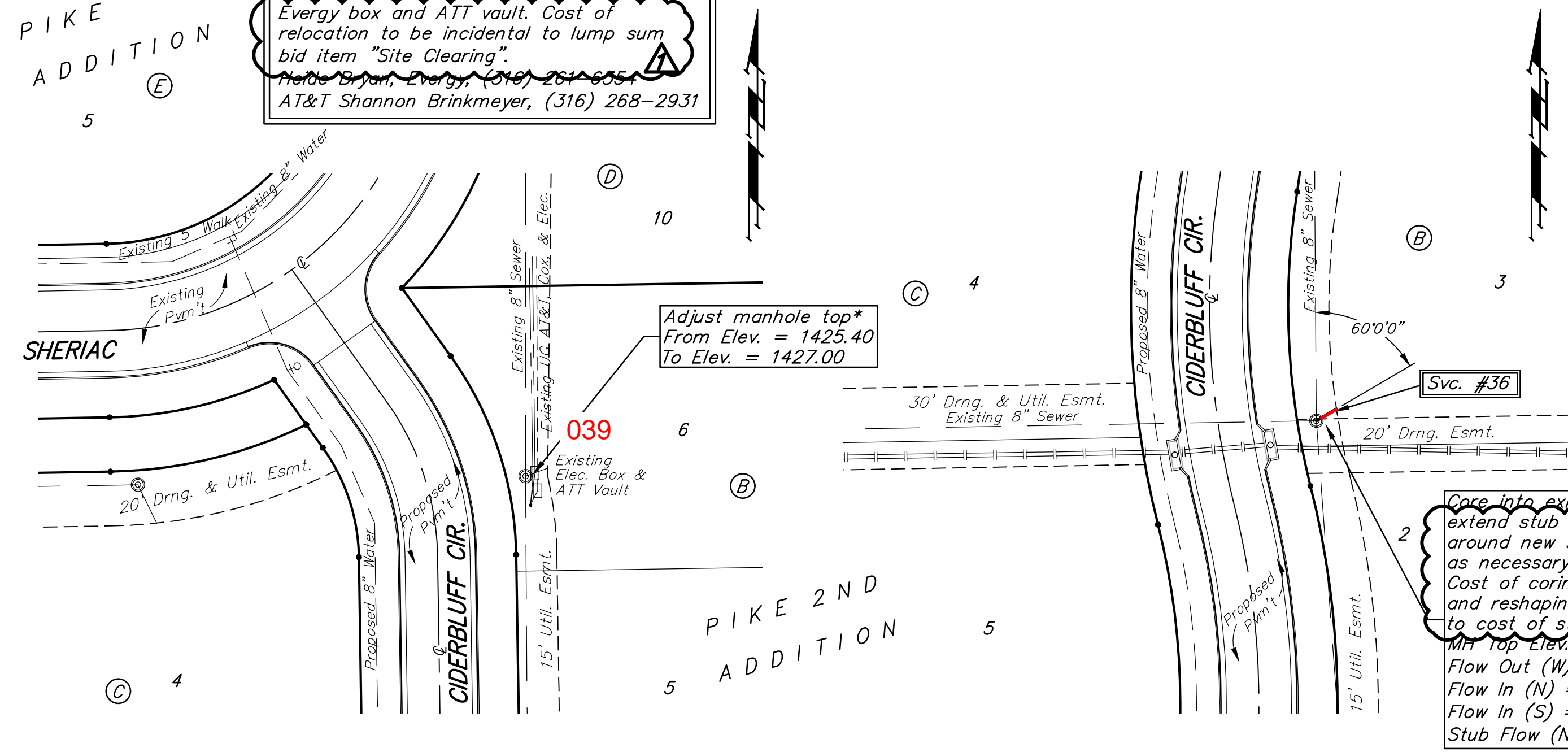
BM #2: City of Wichita disc adjacent to fire hydrant at SE corner of Lot 139, Block E, Pike Addition.
 Elev. = 1425.59 NAVD88

Distance from Main to Riser (L/Rt.)	Distance from		NUMBER	TYPE	LOCATION			FOR INFORMATION ONLY		
	Upstream MH	Downstream MH			LOT NO.	BLOCK NO.	LINE NO.	STATION \ DIRECTION	APPROXIMATE LENGTH 4" PIPE	VERTICAL
13' Rt.	10'	119'	31	8" X 4" Tee W/Riser	18	D	5	7+90.8/Rt.	16.0'	12.9'
11' Rt.	@ mh		32	4" Stub W/Riser	19	D	5	8+00.8/Rt.	16.0'	10.4'
8' Rt.	180'	105'	33	8" X 4" Tee W/Riser	20	D	5	9+05.8/Rt.	15.0'	8.0'
8' Rt.	80'	205'	34	8" X 4" Tee W/Riser	21	D	5	10+05.8/Rt.	13.5'	8.0'
9' Rt.	@ mh		35	4" Stub W/Riser	22	D	5	10+85.8/Rt.	12.5'	9.3'
			36	4" Stub	3	B	-	-	-	8.6'

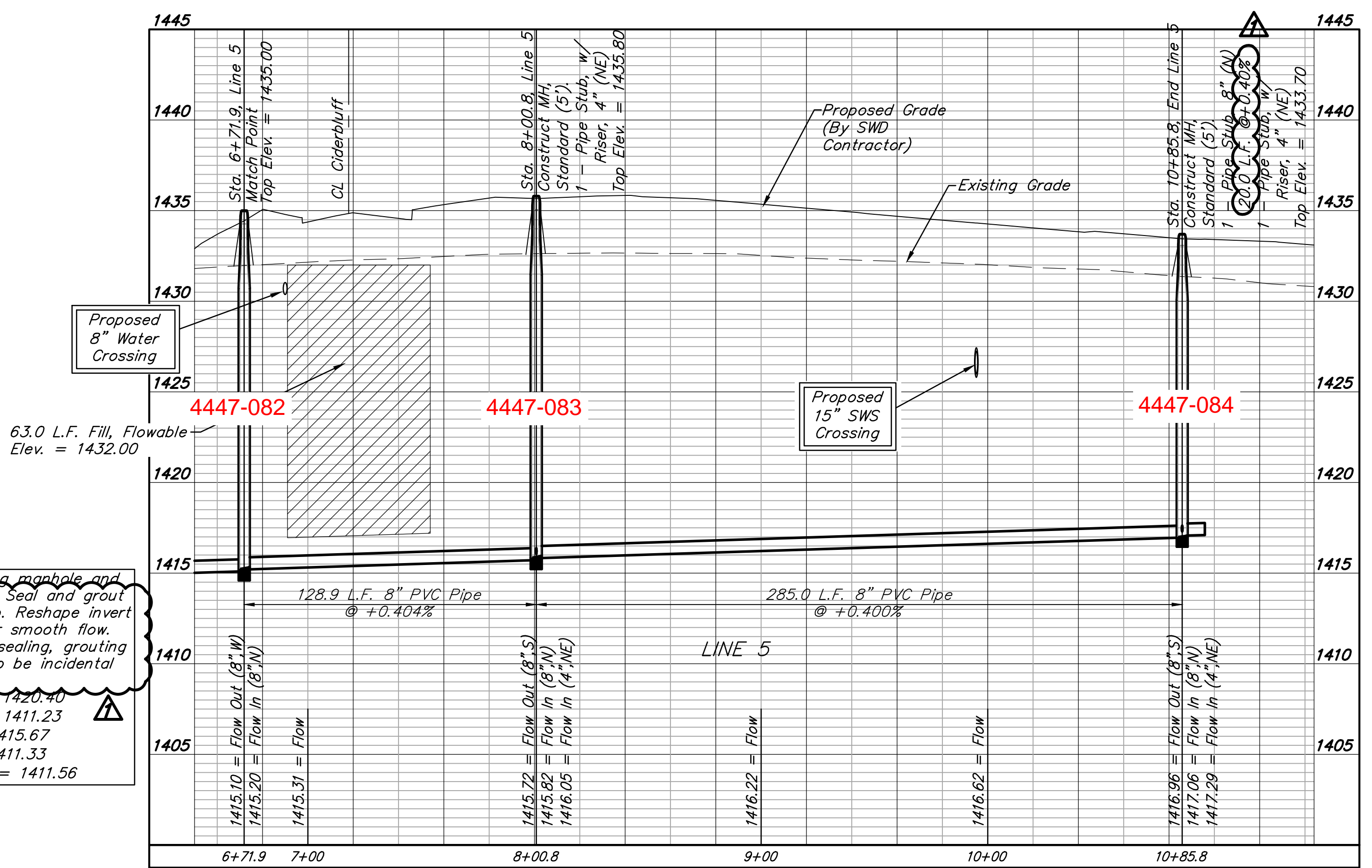
NOTE: Vertical Riser Pipe shall be extended to 2' minimum above ground water elevation and 4' maximum below proposed ground elevation.



*Contact utility companies 3 weeks prior to construction to coordinate relocation of every box and ATT vault. Cost of relocation to be incidental to lump sum bid item "Site Clearing".
 Notice to Proceed: 07/20/2021
 AT&T Shannon Brinkmeyer, (316) 268-2931



Core into existing manhole and extend stub NE. Seal and grout around new stub. Reshape invert as necessary for smooth flow. Cost of coring, sealing, grouting and reshaping to be incidental to cost of stub.
 MH Top Elev. = 1420.40
 Flow Out (W) = 1411.23
 Flow In (N) = 1415.67
 Flow In (S) = 1411.33
 Stub Flow (NE) = 1411.56



BAUGHMAN COMPANY
 315 Ellis St.
 Wichita, KS 67211
 316-262-7271
 BaughmanCo.com

PIKE ADDITION
 Phase 3
LINE 5
 SANITARY SEWER IMPROVEMENTS
 PROJECT NUMBER:
 20-11-E769
 DESIGN: AEG DRAWN: TMS
 DATE: July 20, 2021
 SHEET 9 OF 22

File: E:\Projects\Pike Addition - Engineering\Phase 3\Sewer\Sewer Revised.dwg