

Lateral 4, Main 23, FMC SANITARY SEWER IMPROVEMENTS

to serve

MONARCH LANDING 5TH ADDITION CITY OF WICHITA, KANSAS

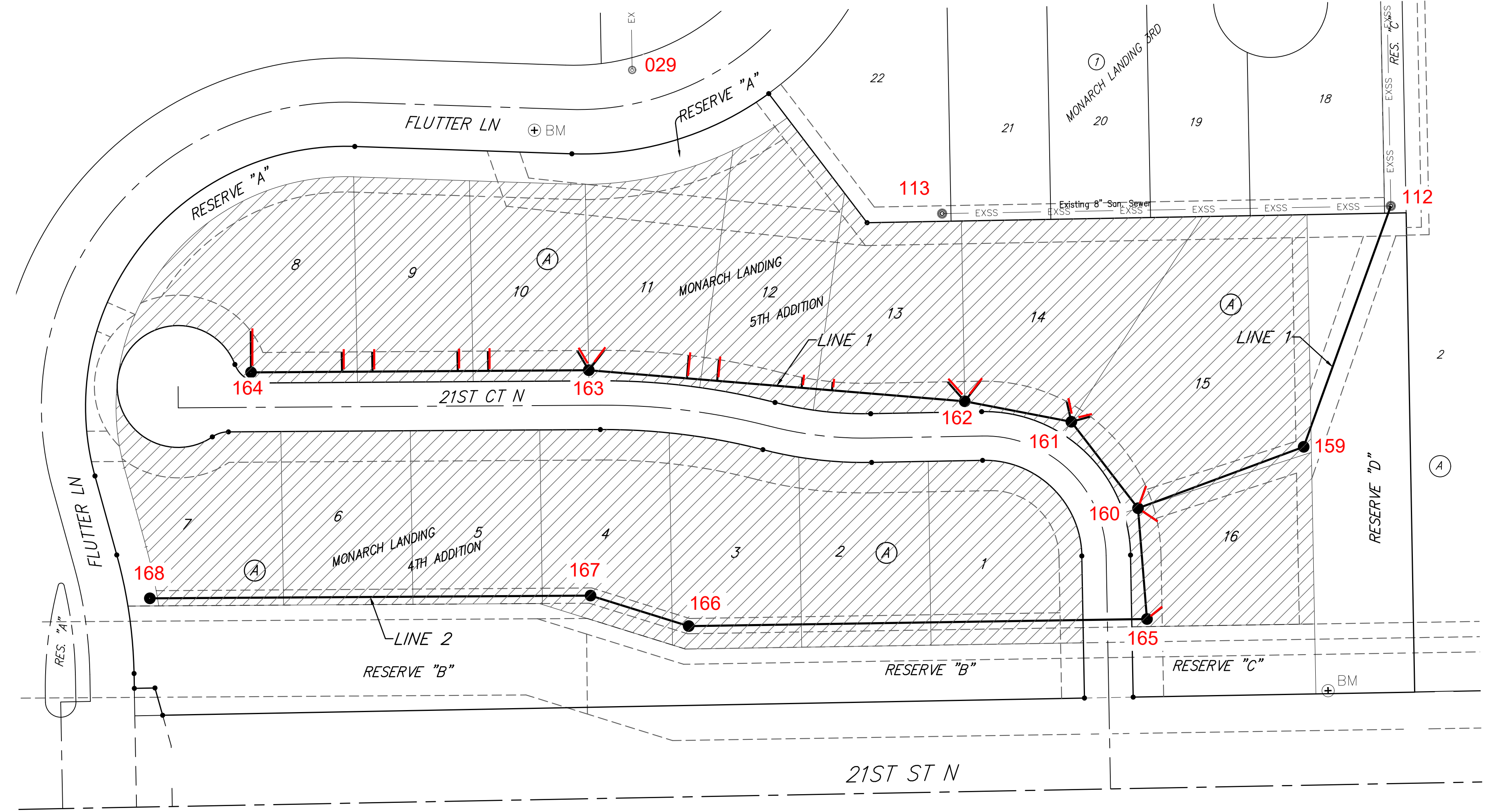
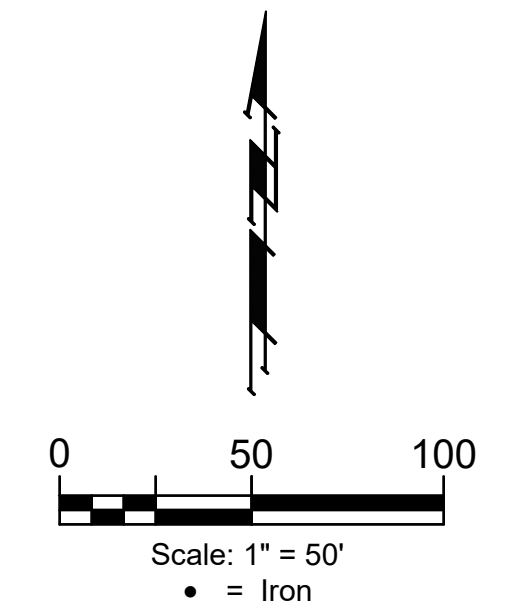
Gary Janzen, P.E. City Engineer
Project Number: 468-2021-022637
Org Code Number: 47215721
Munis Number: E1086

Basin: 4MC-03
6450B

GENERAL NOTES:

- Contractor will be required to provide notice to utility companies a minimum of forty-eight (72) hours prior to any excavation, as follows:
Kansas One-Call 687-2470
The Contractor must notify the following in case of an emergency:
Cox Communications 262-4270
Kansas Gas Service 1-888-482-4950
Everg 383-8650
Aquila Energy 1-800-303-0357
ATT 268-2245
City of Wichita Water Dept. 268-4563
City of Wichita Sewer Maint. 268-4024
City of Wichita Storm Sewer Maint. 268-4090
City of Wichita Traffic Maint. 268-4034
Conoco Phillips Pipeline Co. 1-877-267-2290
Southern Star Pipeline Co. 529-6600
Kinder-Morgan Pipeline Co. 1-888-844-5658
- Utility service lines, poles, valve boxes, meters, and etcetera are to be adjusted as necessary by others prior to construction unless the plans specifically call for their adjustment by the Contractor or unless the plans specifically identify a utility to be adjusted by its owner during construction. Existing utilities and their location, as shown on the plans, represent the best information obtainable for design. The Contractor will be required to work around existing utilities within the right-of-way which do not conflict with proposed construction.
- Rubble from the removal of miscellaneous structures and excess excavation which is to be wasted shall be disposed of on sites to be provided by the Contractor. These sites shall be approved by the Engineer as to suitability, appearance and site location. Locations, in the opinion of the Engineer, that will leave an unsightly appearance will not be approved. All disposal sites must be approved by the Kansas Department of Health and Environment. Material either stockpiled or disposed of in a flood plain would require a Kansas State Board of Agriculture permit. Any material dumped in waters of the United States or wetlands is subject to U.S. Corps. of Engineers permitting regulations. Any material buried or stockpiled beyond approved construction limits would require additional archaeological investigations unless buried in a previously approved borrow location.
- Trees and shrubs in public right-of-way which are in direct conflict with proposed new construction shall be removed by the Contractor with the Engineer's approval. Trees and shrubs which are not in direct conflict with proposed new construction shall be saved and protected from damage.
- The Contractor shall give all property owners and/or tenants of developed property abutting the construction of this project a minimum of ten (10) days notice prior to start of construction.
- The Contractor shall be responsible for preserving property irons. The Contractor will be required to re-establish any property irons which are damaged or destroyed by his construction operations. Such irons shall be re-established by a licensed land surveyor in accordance with state laws.
- All existing and proposed erosion control measures including silt fencing, erosion control mat, straw bales, inlet barriers, and const. entrance shall be maintained throughout construction by the contractor and until project is accepted by the City of Wichita. The on-site engineer shall complete weekly reports on the status of erosion control measures. The contractor shall be required to comply with maintenance and/or replacement of erosion control measures as determined by the on-site engineer until project is accepted by City of Wichita. Maintenance and/or replacement of erosion control measures to be paid by L.S. bid item "Maintain Existing BMP's."
- All excess excavation shall remain on-site and shall be stockpiled or spread at a location determined by the engineer.
- The Contractor shall be responsible for maintaining continuous flow of sewage through construction. Contractor's proposed method for maintaining sewage flow shall be approved by the Engineer. Cost of maintaining flow of sewage through construction will not be paid for directly and this cost shall be considered as subsidiary to the other pay items of work.
- All areas disturbed by construction are to be seeded as follows:
Seed --- Rye grass; 5 lbs./1000 Sq. Ft.
All costs associated with seeding including mobilization, preparation of ground, seeding, fertilizing, mulching, etc. shall be included in the L.S. bid item "Seeding".
- Trees and shrubs in the work area which are in direct conflict with proposed new construction shall be removed by the Contractor ONLY with the Developer or Baughman Company approval. Trees and shrubs which are not in direct conflict with proposed new construction shall be saved and protected from damage. If trimming is necessary, a chainsaw shall be used. Breaking limbs with equipment will not be allowed. An on-site pre-construction meeting will occur prior to any construction to discuss tree removal, tree protection, and tree trimming.
- Air Bridge Requirements:
a) The contractor shall supply all material required to construct the air bridge.
b) The contractor shall construct the air bridge at proposed location.
c) The contractor shall pick up the materials from the paving contractor post construction of the concrete entrance drive.
- The Developer for this project is Paul Gray
2024 N Woodlawn Blvd Suite 200, Wichita, KS 67208
(316) 978-9047 email: paul@grayconbg.com

Nowak Construction - Contractor
G. Baalman - City of Wichita, Field Project Engineer
R. Skilling - City of Wichita, Inspector
As-built
Stubs & Risers
Release Date (for connection purposes only): 4/7/2022
Completion Date:
pdf: apr 4/15/2022



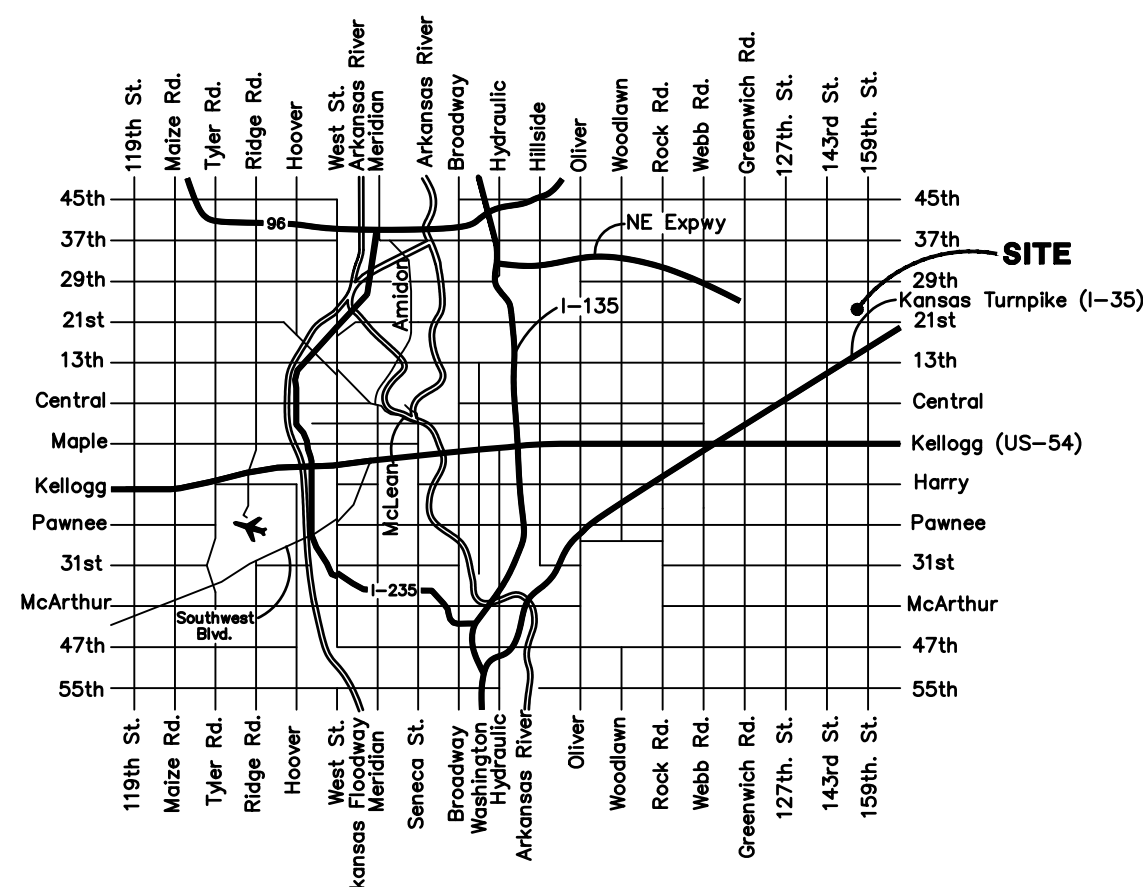
SHEET INDEX

Title Sheet	1
Line 1	2
Line 2	3
Erosion Control Plan	4
Erosion Control BMP Details	5-9
Standard Manhole Detail	10
Frame & Cover Detail	11
Vertical Riser Detail	12
Coordinate Sheet	13
Copy of Plat	14

BENCHMARKS

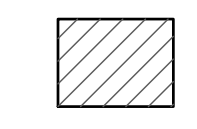
CITY OF WICHITA BENCHMARK
DISC ON THE WEST END OF
THE RCBC HEADWALL, NORTH
OF 21ST ST 57'.
ELEV. = 1368.37 NAVD88

BRASS DISC ON THE TOP OF
CURB ON THE EAST SIDE OF
CURB INLET, SOUTH SIDE OF
FLUTTER LANE, AND NORTH OF
LOT 10, BLOCK A, MONARCH
LANDING 5TH ADDITION.
ELEV. = 1370.97 NAVD88



Vicinity Map

BENEFIT DISTRICT



Nov. 4, 21

BAUGHMAN COMPANY
315 Ellis St. Wichita, KS 67211 316-262-7271
BaughmanCo.com

E:\Projects\Monarch Landing 5th Addition - Engineering\SS_17-07-EZ28.dwg

BENCHMARK:
CITY OF WICHITA BENCHMARK
DISC ON THE WEST END OF
THE RCBC HEADWALL, NORTH
OF 21ST ST 57'.
ELEV. = 1368.37 NAVD88

BRASS DISC ON THE TOP OF
CURB ON THE EAST SIDE OF
CURB INLET, SOUTH SIDE OF
FLUTTER LANE, AND NORTH OF
LOT 10, BLOCK A, MONARCH
LANDING 5TH ADDITION.
ELEV. = 1370.97 NAVD88

Sta. 1+68.2, Line 1
Const. Standard Manhole
2-4" Stubs w/
Risings (NE & SE)
Top Elev. = 1368.50

Remove and replace existing wood fence
only as necessary for construction.
Cost to be included in "Site Clearing"

CAUTION!
Every, Cox, &
AT&T Near

Contractor shall repair any damaged
irrigation lines or sprinkler heads
and sod to match any disturbed
turf in developed adjacent lots or
right-of-ways due to construction
activity. Cost shall be included in
"Site Restoration".

Sta. 0+00, Begin Line 1
Core Existing Manhole and
Extend 8" Pipe Southwest
Reshape invert as necessary.
Contractor to Verify Depth
and Location of Existing
Manhole Prior to Construction.
Ex MH Rim = 1368.06

Jason & Raquel Greer
2220 N FLUTTER LN
WICHITA, KS 67228

Sta. 2+84.2, Line 1 =
Sta. 0+00, Line 2
Const. Standard Manhole
Top Elev. = 1370.10

Riser #1, Lot 16, Blk A
Dist. from Main to Riser: 15' Lt.
Dist. from USMH: @ mh
Dist. from DSMH: @ mh

Riser #2, Lot 15, Blk A
Dist. from Main to Riser: 15' Rt.
Dist. from USMH: @ mh
Dist. from DSMH: @ mh

Riser #3, Lot 15, Blk A
Dist. from Main to Riser: 13' Rt.
Dist. from USMH: @ mh
Dist. from DSMH: @ mh

Sta. 3+56.0, Line 1
Const. Standard Manhole
2-4" Stubs w/
Risings (NE & NW)
Top Elev. = 1370.40

Riser #4, Lot 14, Blk A
Dist. from Main to Riser: 13' Rt.
Dist. from USMH: @ mh
Dist. from DSMH: @ mh

Riser #5, Lot 14, Blk A
Dist. from Main to Riser: 17' Rt.
Dist. from USMH: @ mh
Dist. from DSMH: @ mh

Riser #6, Lot 13, Blk A
Dist. from Main to Riser: 17' Rt.
Dist. from USMH: @ mh
Dist. from DSMH: @ mh

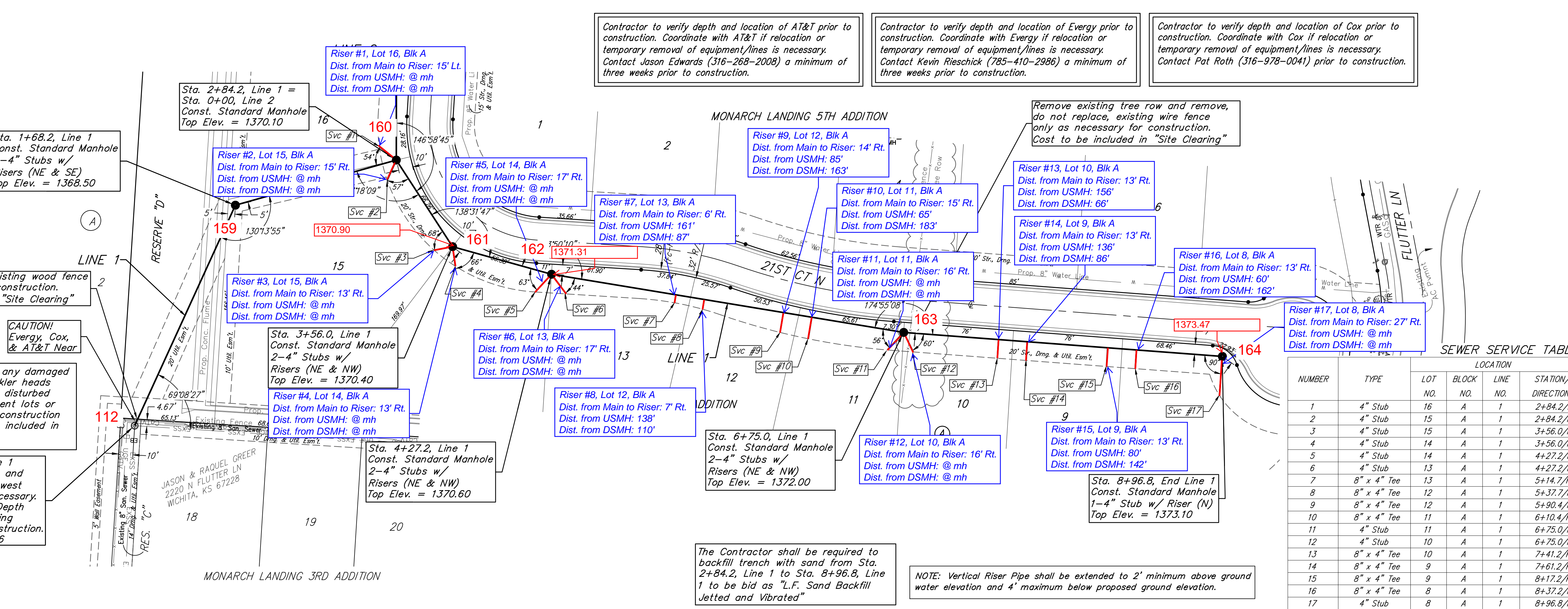
Sta. 4+27.2, Line 1
Const. Standard Manhole
2-4" Stubs w/
Risings (NE & NW)
Top Elev. = 1370.60

Riser #7, Lot 13, Blk A
Dist. from Main to Riser: 6' Rt.
Dist. from USMH: 161'
Dist. from DSMH: 87'

Riser #8, Lot 12, Blk A
Dist. from Main to Riser: 7' Rt.
Dist. from USMH: 138'
Dist. from DSMH: 110'

Sta. 6+75.0, Line 1
Const. Standard Manhole
2-4" Stubs w/
Risings (NE & NW)
Top Elev. = 1372.00

Riser #9, Lot 12, Blk A
Dist. from Main to Riser: 14' Rt.
Dist. from USMH: 85'
Dist. from DSMH: 163'



Contractor to verify depth and location of AT&T prior to construction. Coordinate with AT&T if relocation or temporary removal of equipment/lines is necessary. Contact Jason Edwards (316-268-2008) a minimum of three weeks prior to construction.

Contractor to verify depth and location of Every prior to construction. Coordinate with Every if relocation or temporary removal of equipment/lines is necessary. Contact Kevin Rieschick (785-410-2986) a minimum of three weeks prior to construction.

Contractor to verify depth and location of Cox prior to construction. Coordinate with Cox if relocation or temporary removal of equipment/lines is necessary. Contact Pat Roth (316-978-0041) prior to construction.

Remove existing tree row and remove, do not replace, existing wire fence only as necessary for construction. Cost to be included in "Site Clearing"

Riser #10, Lot 11, Blk A
Dist. from Main to Riser: 15' Rt.
Dist. from USMH: 65'
Dist. from DSMH: 183'

Riser #11, Lot 11, Blk A
Dist. from Main to Riser: 16' Rt.
Dist. from USMH: @ mh
Dist. from DSMH: @ mh

Riser #12, Lot 10, Blk A
Dist. from Main to Riser: 16' Rt.
Dist. from USMH: @ mh
Dist. from DSMH: @ mh

Riser #13, Lot 10, Blk A
Dist. from Main to Riser: 13' Rt.
Dist. from USMH: 156'
Dist. from DSMH: 66'

Riser #14, Lot 9, Blk A
Dist. from Main to Riser: 13' Rt.
Dist. from USMH: 136'
Dist. from DSMH: 86'

Riser #15, Lot 9, Blk A
Dist. from Main to Riser: 13' Rt.
Dist. from USMH: 80'
Dist. from DSMH: 142'

Sta. 8+96.8, End Line 1
Const. Standard Manhole
1-4" Stub w/ Riser (N)
Top Elev. = 1373.10

Riser #16, Lot 8, Blk A
Dist. from Main to Riser: 13' Rt.
Dist. from USMH: 60'
Dist. from DSMH: 162'

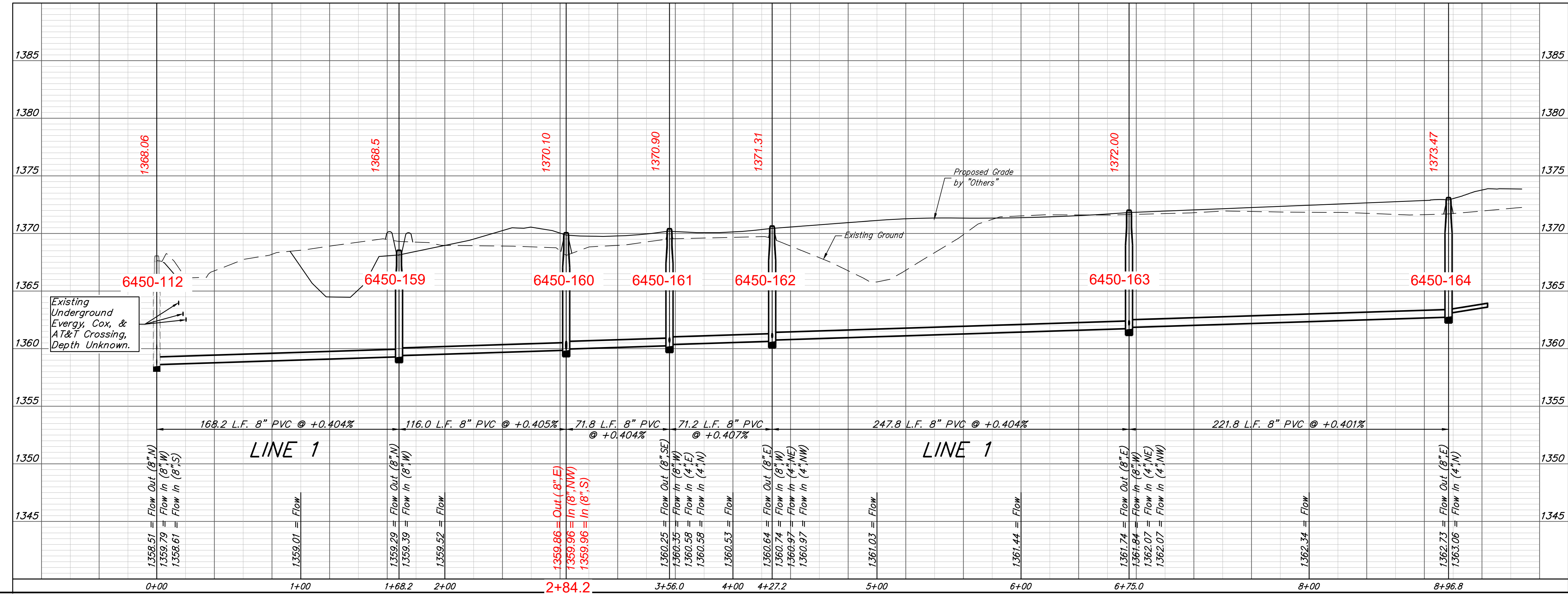
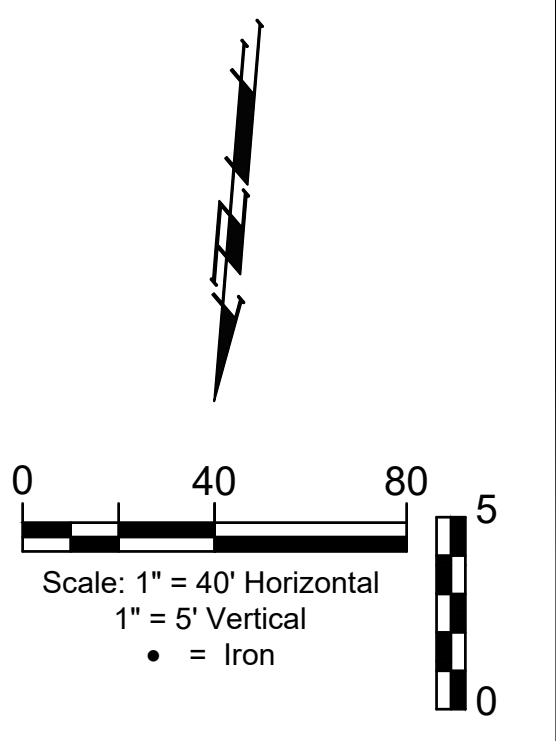
Riser #17, Lot 8, Blk A
Dist. from Main to Riser: 27' Rt.
Dist. from USMH: @ mh
Dist. from DSMH: @ mh

The Contractor shall be required to backfill trench with sand from Sta. 2+84.2, Line 1 to Sta. 8+96.8, Line 1 to be bid as "L.F. Sand Backfill Jetted and Vibrated"

NOTE: Vertical Riser Pipe shall be extended to 2' minimum above ground water elevation and 4' maximum below proposed ground elevation.

SEWER SERVICE TABLE

NUMBER	TYPE	LOCATION				FOR INFORMATION ONLY	
		LOT NO.	BLOCK NO.	LINE NO.	STATION/ DIRECTION	APPROXIMATE LENGTH 4" PIPE	
						VERTICAL	HORIZONTAL
1	4" Stub	16	A	1	2+84.2/Lt.	4.5'	15'
2	4" Stub	15	A	1	2+84.2/Rt.	4.5'	15'
3	4" Stub	15	A	1	3+56.0/Rt.	4.5'	13'
4	4" Stub	14	A	1	3+56.0/Rt.	4.5'	13'
5	4" Stub	14	A	1	4+27.2/Rt.	4.3'	17'
6	4" Stub	13	A	1	4+27.2/Rt.	4.3'	17'
7	8" x 4" Tee	13	A	1	5+14.7/Rt.	5.1'	6'
8	8" x 4" Tee	12	A	1	5+37.7/Rt.	5.2'	7'
9	8" x 4" Tee	12	A	1	5+90.4/Rt.	5.2'	14'
10	8" x 4" Tee	11	A	1	6+10.4/Rt.	5.2'	15'
11	4" Stub	11	A	1	6+75.0/Rt.	4.5'	16'
12	4" Stub	10	A	1	6+75.0/Rt.	4.5'	16'
13	8" x 4" Tee	10	A	1	7+41.2/Rt.	5.3'	13'
14	8" x 4" Tee	9	A	1	7+61.2/Rt.	5.3'	13'
15	8" x 4" Tee	9	A	1	8+17.2/Rt.	5.2'	13'
16	8" x 4" Tee	8	A	1	8+37.2/Rt.	5.4'	13'
17	4" Stub	8	A	1	8+96.8/Rt.	4.5'	27'



BAUGHMAN COMPANY
315 Ellis St.
Wichita, KS 67211
316-262-7271
BaughmanCo.com

MONARCH LANDING
5TH ADDITION

LINE 1

SANITARY SEWER
IMPROVEMENTS

PROJECT NUMBER:
468-2021-022637

DESIGN: NBW DRAWN: CDW

DATE: Nov. 4, 2021

SHEET OF
2 14

File: E:\Projects\Monarch Landing 5th Addition - Engineering\SS-17-07-ET28.dwg

BENCHMARK:
 CITY OF WICHITA BENCHMARK
 DISC ON THE WEST END OF
 THE RCBC HEADWALL, NORTH
 OF 21ST ST 57'.
 ELEV. = 1368.37 NAVD88

BRASS DISC ON THE TOP OF
 CURB ON THE EAST SIDE OF
 CURB INLET, SOUTH SIDE OF
 FLUTTER LANE, AND NORTH OF
 LOT 10, BLOCK A, MONARCH
 LANDING 5TH ADDITION.
 ELEV. = 1370.97 NAVD88

Sta. 0+82.5 to Sta. 1+15.5
 Install 33.0 L.F. Flowable Fill
 Per City Specifications.
 Fill to Elev. 1367.10

Sta. 3+74.0, Line 2
 Const. Standard Manhole
 Top Elev. = 1370.40

Sta. 7+30.9, End Line 2
 Const. Standard Manhole
 Top Elev. = 1373.30

Sta. 0+73.0, Line 2
 Const. Standard Manhole
 1-4" Stub w/ Riser (NE)
 Top Elev. = 1370.00

Riser #18, Lot 16, Blk A
 Dist. from Main to Riser: 15' Lt.
 Dist. from USMH: @ mh
 Dist. from DSMH: @ mh

Sta. 0+00, Begin Line 2
 = Sta. 2+84.2, Line 1
 Top Elev. = 1370.10

Sta. 4+41.5, Line 2
 Const. Standard Manhole
 Top Elev. = 1371.70

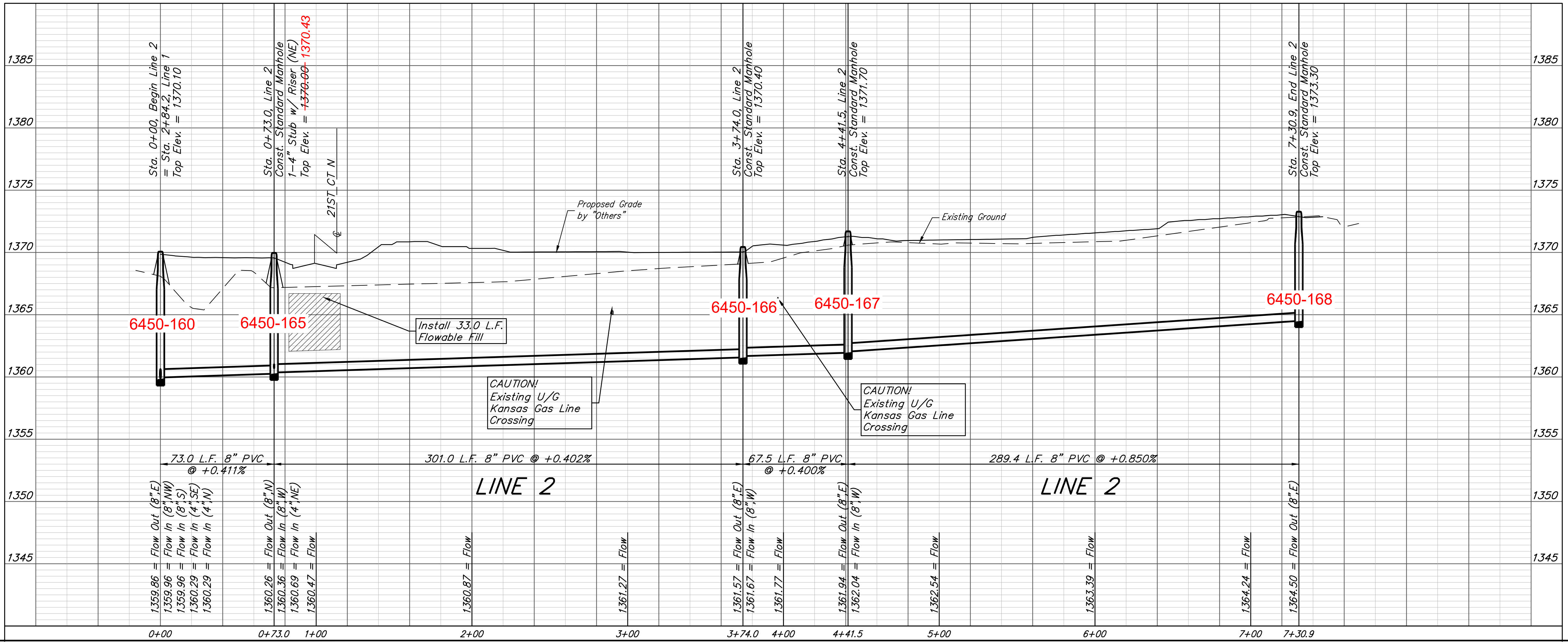
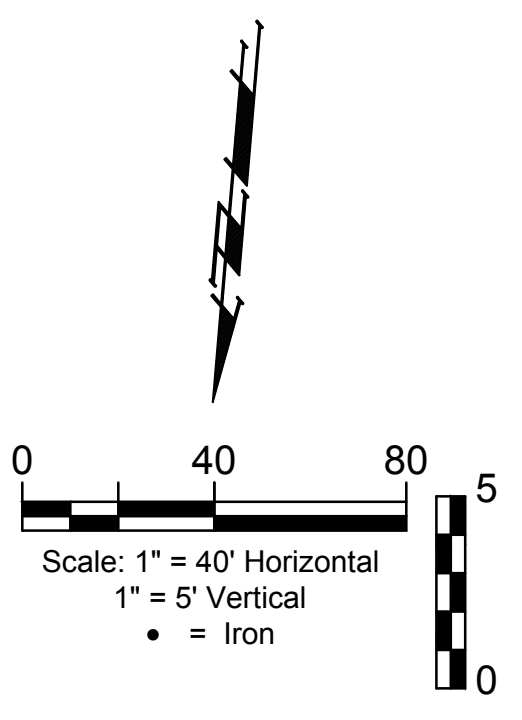
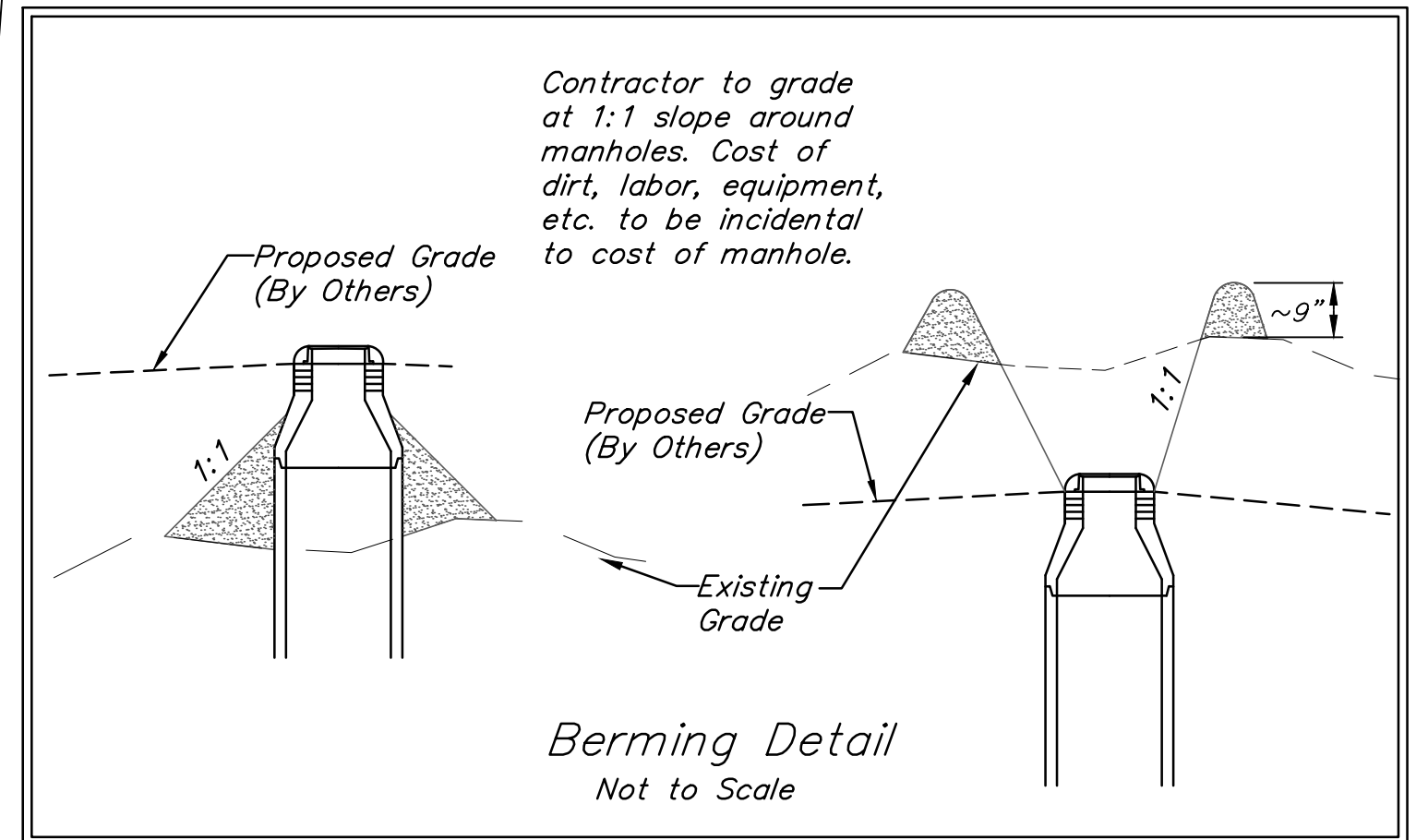
Remove existing tree row and remove,
 do not replace, existing wire fence
 only as necessary for construction.
 Cost to be included in "Site Clearing"

SEWER SERVICE TABLE

NUMBER	TYPE	LOCATION				FOR INFORMATION ONLY	
		LOT NO.	BLOCK NO.	LINE NO.	STATION/ DIRECTION	APPROXIMATE LENGTH 4" PIPE	VERTICAL
18	4" Stub	16	A	1	2+84.2/Lt.	4.0'	15'

NOTE: Vertical Riser Pipe shall be extended to 2' minimum above ground water elevation and 4' maximum below proposed ground elevation.

The Contractor shall be required to
 backfill trench with sand from Sta.
 0+00, Line 2 to Sta. 0+73.0, Line 2
 to be bid as "L.F. Sand Backfill
 Jetted and Vibrated"



BAUGHMAN COMPANY
 315 Ellis St.
 Wichita, KS 67211
 316-262-7271
 BaughmanCo.com

MONARCH LANDING
 5TH ADDITION

LINE 2

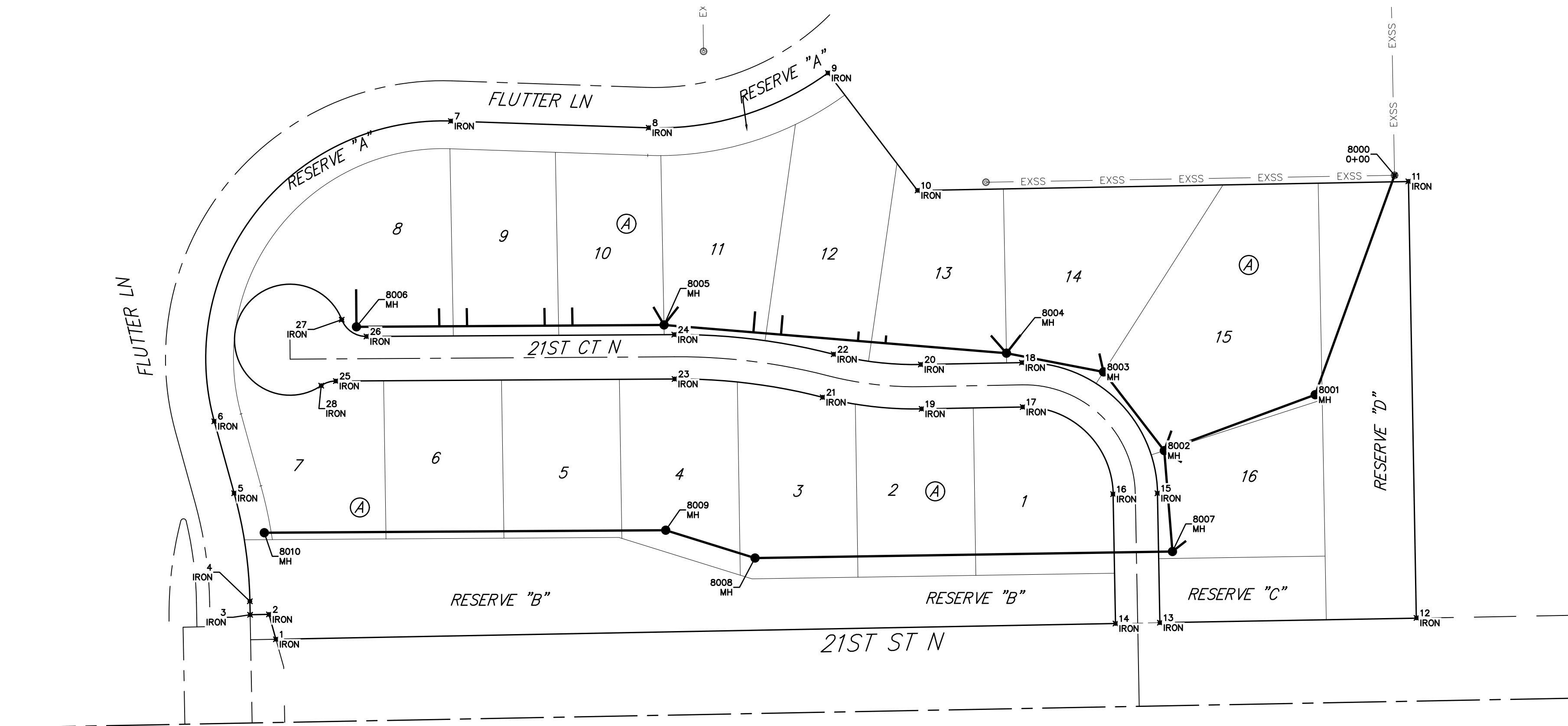
SANITARY SEWER
 IMPROVEMENTS
 PROJECT NUMBER:
 468-2021-022637

DESIGN: NBW DRAWN: CDW
 DATE: Nov. 4, 2021

SHEET OF
3 14

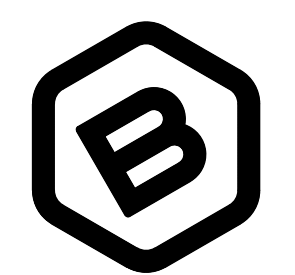
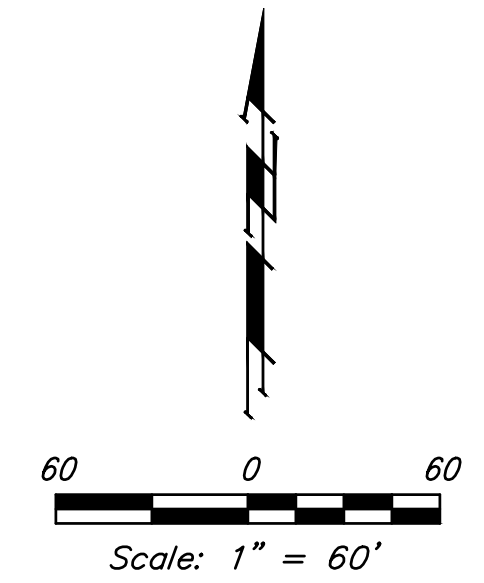
File: E:\Projects\Monarch Landing 5th Addition - Engineering\SS-17-07-ET28.dwg

BENCHMARK:
 Rail Road Spike North Face of
 Light Pole 227± West of
 Southeast Corner of Section 1,
 North Side of 21st St North.
 Elevation = 1369.42 (NAVD88)



CONTROL POINTS			
Point #	Northing	Easting	Description
1	5068.32	5051.34	IRON
2	5086.23	5046.29	IRON
3	5085.98	5032.74	IRON
4	5095.73	5032.56	IRON
5	5173.65	5021.24	IRON
6	5225.47	5006.91	IRON
7	5441.95	5177.47	IRON
8	5437.16	5320.12	IRON
9	5476.61	5449.37	IRON
10	5391.94	5513.99	IRON
11	5398.51	5867.88	IRON
12	5083.75	5873.73	IRON
13	5080.28	5688.72	IRON
14	5079.68	5656.72	IRON
15	5173.58	5686.98	IRON
16	5172.98	5654.99	IRON
17	5235.78	5589.81	IRON
18	5267.77	5589.21	IRON
19	5234.42	5516.92	IRON
20	5266.42	5516.33	IRON
21	5242.81	5445.55	IRON
22	5273.79	5453.54	IRON
23	5256.01	5338.80	IRON
24	5288.01	5338.60	IRON
25	5254.48	5094.56	IRON
26	5286.62	5116.64	IRON
27	5298.74	5098.80	IRON
28	5251.19	5084.00	IRON

SS POINTS			
Point #	Northing	Easting	Description
8000	5402.84	5857.91	0+00
8001	5244.66	5800.68	MH
8002	5204.32	5691.88	MH
8003	5261.11	5648.08	MH
8004	5274.57	5578.08	MH
8005	5294.96	5331.17	MH
8006	5283.57	5109.38	MH
8007	5131.59	5697.76	MH
8008	5126.91	5396.80	MH
8009	5146.97	5332.36	MH
8010	5143.15	5042.94	MH



BAUGHMAN COMPANY
 315 Ellis St.
 Wichita, KS 67211
 316-262-7271
 BaughmanCo.com

MONARCH LANDING
 5TH ADDITION

COORDINATES

SANITARY SEWER
 IMPROVEMENTS
 PROJECT NUMBER:
 468-2021-022637
 DESIGN: NBW DRAWN: CDW
 DATE: Nov. 4, 2021
 SHEET **13** OF **14**

File: E:\Projects\Monarch_Landing 5th Addition_17-07-ET28.dwg