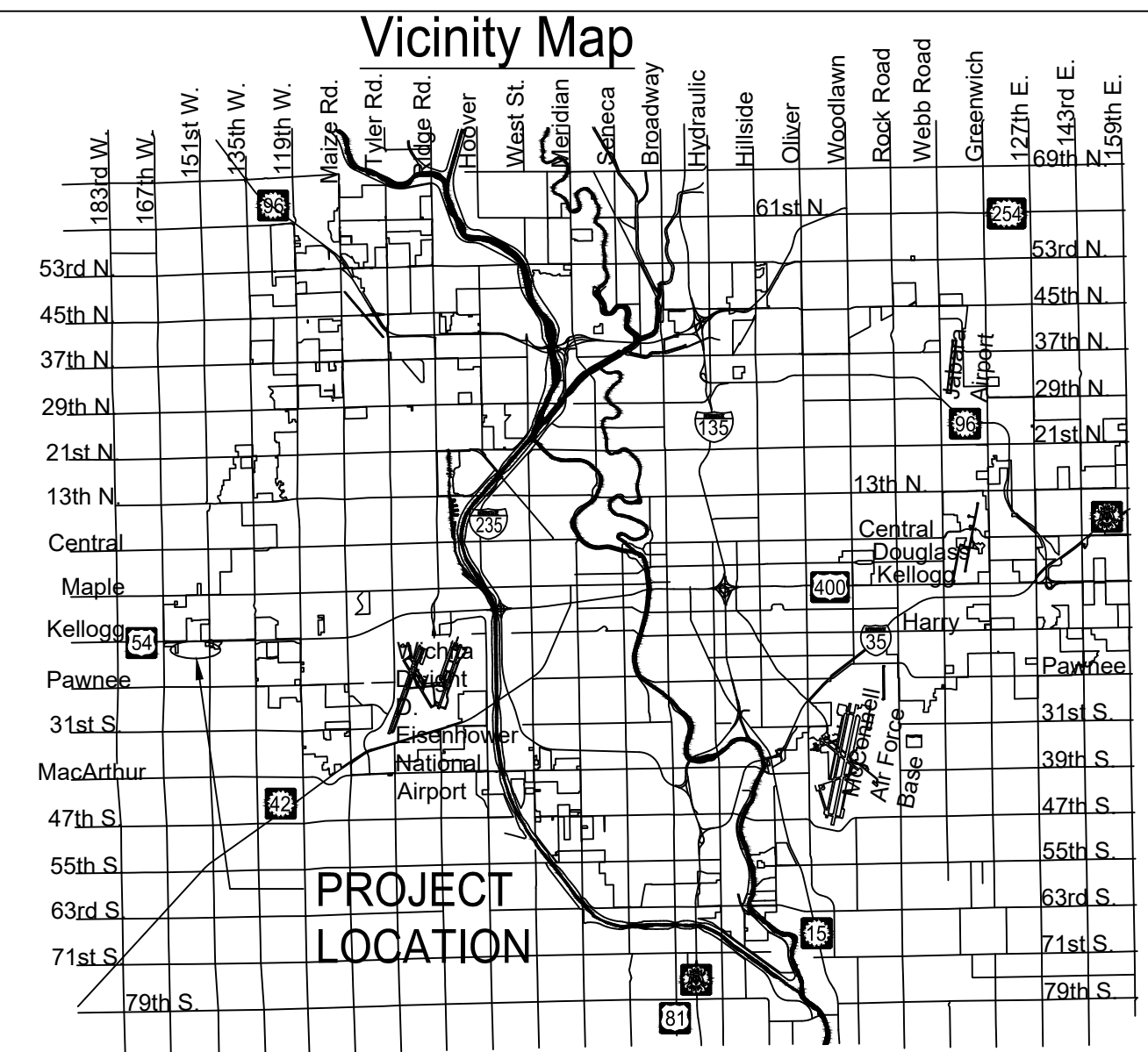


# SANITARY SEWER EXTENSION to serve Sanitary Sewer From Lift Station 47 CITY OF WICHITA, KANSAS

Gary Janzen, P.E. City Engineer  
Project Number 468-85254  
O.C.A. NO. 620787

2020-026810  
S9029

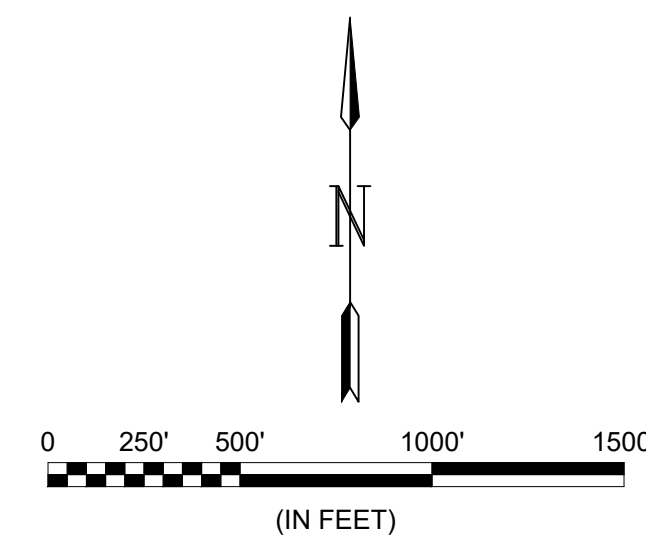
McCullough - Contractor  
B. Woods - City of Wichita, Field Project Engineer  
S. Stripling - City of Wichita, Inspector  
As-built  
Final Acceptance 1/21/2021  
Completion Date: 7/29/2021 dea



## GENERAL NOTES:

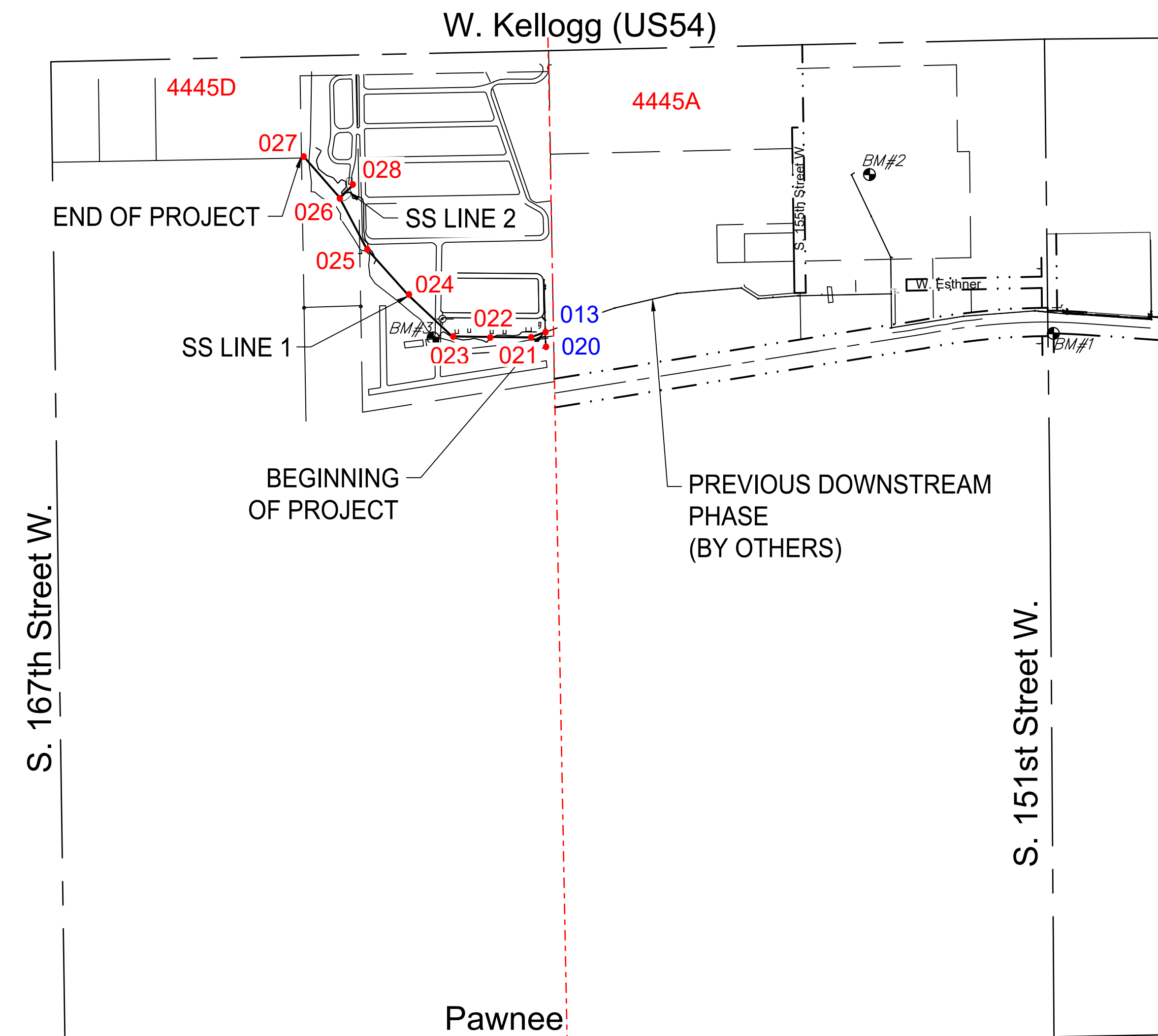
- The Contractor shall comply with all applicable safety regulations. All construction shall be completed following current City Standard Specifications and Special Provisions.
- Contractor will be required to provide notice to utility companies a minimum of seventy-two (72) hours prior to any excavation, as follows:  
  
Kansas One-Call 687-2470  
  
The Contractor must notify the following in case of an emergency:  
  
AT&T 1-800-246-8464  
Black Hills Energy 1-800-694-8989  
City of Goddard 1-316-648-5899  
City of Wichita Water & Sewer Dept. 1-316-219-8921  
City of Wichita Stormwater 1-316-268-4090  
City of Wichita Traffic 1-316-268-4034  
Cox Communications 1-888-249-3530  
Kansas Fiber Network 1-800-778-9140  
Kansas Gas Service 1-888-482-4950  
OneOK Field Services 1-866-261-1099  
Sedgwick Co. RWD#4 1-316-207-1080  
Evergry 1-800-544-4857  
Regency Mobile Home (Maintenance) 1-316-612-3424
- Utility service lines, poles, etc. are to be adjusted as necessary by others prior to construction unless the plans specifically call for their adjustment by the Contractor or unless the plans specifically identify a utility to be adjusted by its owner during construction. Existing utilities and their location, as shown on the plans, represent the best information obtainable for design. The Contractor will be required to work around existing utilities within the right-of-way which do not conflict with proposed construction.
- Rubble from the removal of miscellaneous structures and excess excavation which is to be wasted shall be disposed of on sites to be provided by the Contractor. These sites shall be approved by the Engineer as to suitability, appearance and site location. Locations, in the opinion of the Engineer, that will leave an unsightly appearance will not be approved. All disposal sites must be approved by the Kansas Department of Health and Environment. Material either stockpiled or disposed of in a flood plain will require a Kansas State Board of Agriculture permit. Any material dumped in waters of the United States or wetlands is subject to U.S. Corps. of Engineers permitting regulations. Any material buried or stockpiled beyond approved construction limits will require additional archaeological investigations unless buried in a previously approved borrow location.
- Trees and shrubs in public right-of-way which are in direct conflict with proposed new construction shall be removed by the Contractor with the Engineer's approval. Trees and shrubs which are not in direct conflict with proposed new construction shall be saved and protected from damage.
- The Contractor shall give all property owners and/or tenants of developed property abutting the construction of this project a minimum of ten (10) days written notice prior to start of construction.
- The Contractor shall be responsible for preserving property irons. The Contractor will be required to re-establish any property irons which are damaged or destroyed by his construction operations. Such irons shall be re-established by a licensed land surveyor in accordance with state laws.
- If traffic will be impacted by construction, a traffic control plan must be prepared in accordance with Sedgwick County, KS standard specifications and details. Traffic on Lake Dr. which is a private street and all publicly owned rights-of-way must be maintained during construction. The Contractor shall be responsible for all traffic control measures to facilitate construction. The intersection of Avenue E may be closed during construction near SSMH 5. All construction zone markings and signage shall conform to the latest version of the Manual on Uniform Traffic Control Devices (MUTCD) as published by the US Dept. of Transportation, Federal Highway Administration. All costs associated with construction markings and signage shall be the Contractors responsibly.
- All elevations shown are NAVD 88, G12B.
- All areas disturbed during construction that will not be under proposed pavement shall be restored to match existing conditions.
- The Contractor shall protect from damage and support existing utilities through constructions as approved by the utility owner and the Engineer at the contractors expense.
- Contractor shall limit the extent of trench openings overnight and weekends to less than 50 feet.
- All stubs and plugged pipes shall be located with green plastic tape in the same manner as risers.

- Connecting to Existing Sanitary Sewer System:  
Prior to laying sewer lines and setting manholes that connect to existing stubs in existing manholes, connect to existing manholes, or connect to other existing lines, the Contractor shall expose and verify the elevation, grade, and alignment of existing stubs, manholes, and/or lines and notify the Engineer of any deviation from the plans. If connection to an existing manhole is required and the existing manhole does not have an existing stub or the stub is unusable due to elevation grade or alignment, the Contractor shall bore cut into existing manhole wall to make connection using approved water stop gasket, and reshape the existing manhole invert to provide smooth flow. If manhole connections are necessary, the cost of connecting to existing manholes and pipe stubs is incidental to the project.
- Contractor shall provide positive drainage away from all manhole covers.
- The Contractor shall prevent any construction debris from entering the existing sanitary sewer during construction.
- The Contractor shall be responsible for maintaining continuous flow of sewage through construction. Contractors proposed method for maintaining sewage flow shall be submitted and approved by the Sewer Maintenance Division (316-268-4073) prior to starting and by-passing of sewage flows.
- Any over excavation from manhole and pipe removal shall be backfilled with Type 1 Pipe Bedding.
- No shrink or swell factors have been applied to the earthwork quantities shown on this project. All earthwork quantities are based on raw surface volume comparisons.
- Excess dirt generated from installation of underground utilities is to be removed from this site.
- The entire project shall be seeded, fertilized, and mulched per the City of Wichita specifications.
- When accessing the site through mobile home parks the contractor shall use the defined roads as much as possible. If access requires other means the contractor is responsible for restoring the site. Access to all homes must be maintained at all times.

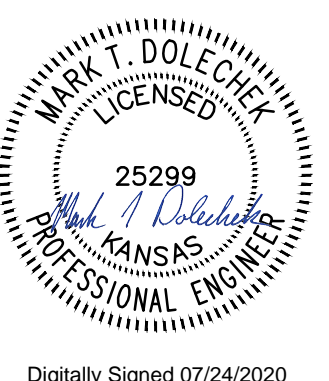


### Benchmarks

- POINT #1  
TOP OF VERTICAL RAIL 61' SOUTH OF PATH & 24' EAST OF CENTER LINE OF 151ST STREET W.  
ELEVATION = 1395.56 (NAVD88, G12B)
- POINT #2  
SQUARE CUT, WEST END OF STORM SHELTER LOCATED IN MOBILE HOME PARK BETWEEN 151ST AND 155TH STREETS  
ELEVATION = 1401.68 (NAVD88, G12B)
- POINT #3  
SQUARE CUT, SOUTH END OF WEST HEADWALL OF BOX CULVERT, 22' NORTH OF CENTER LINE OF AVENUE F & 22' NORTH OF CENTER LINE OF LAKE DR. LOCATED IN MOBILE HOME PARK BETWEEN 155TH AND 167TH STREETS  
ELEVATION = 1408.86 (NAVD88, G12B)



Sheet List Table	
Sheet Number	Sheet Title
1	SS Titlesheet
2	SS Line 1 (1 of 2)
3	SS Line 1 (2 of 2)
4	SS Line 2
5	Force Main Abandonment
6	Bubble Map SS Pnts
7	Bubble Map Control Pnts
8	Pre-Cast SS MH
9	MH Frame & Cover
10	Erosion Control Plan
11	BMP Details - BOC
12	BMP Details - Silt Fc
13	BMP Details - Straw Bale
14	BMP Details - SIP
15	BMP Details - SDP



Digitally Signed 07/24/2020

PLANS PREPARED BY



GARVER  
8535 E 21st St, Suite 130  
Wichita, KS 67206  
(316) 264-8008  
www.GarverUSA.com

JULY 2020

REV.	DATE	DESCRIPTION	BY



CITY OF WICHITA  
 WICHITA, KANSAS

Sanitary Sewer from  
 Lift Station 47

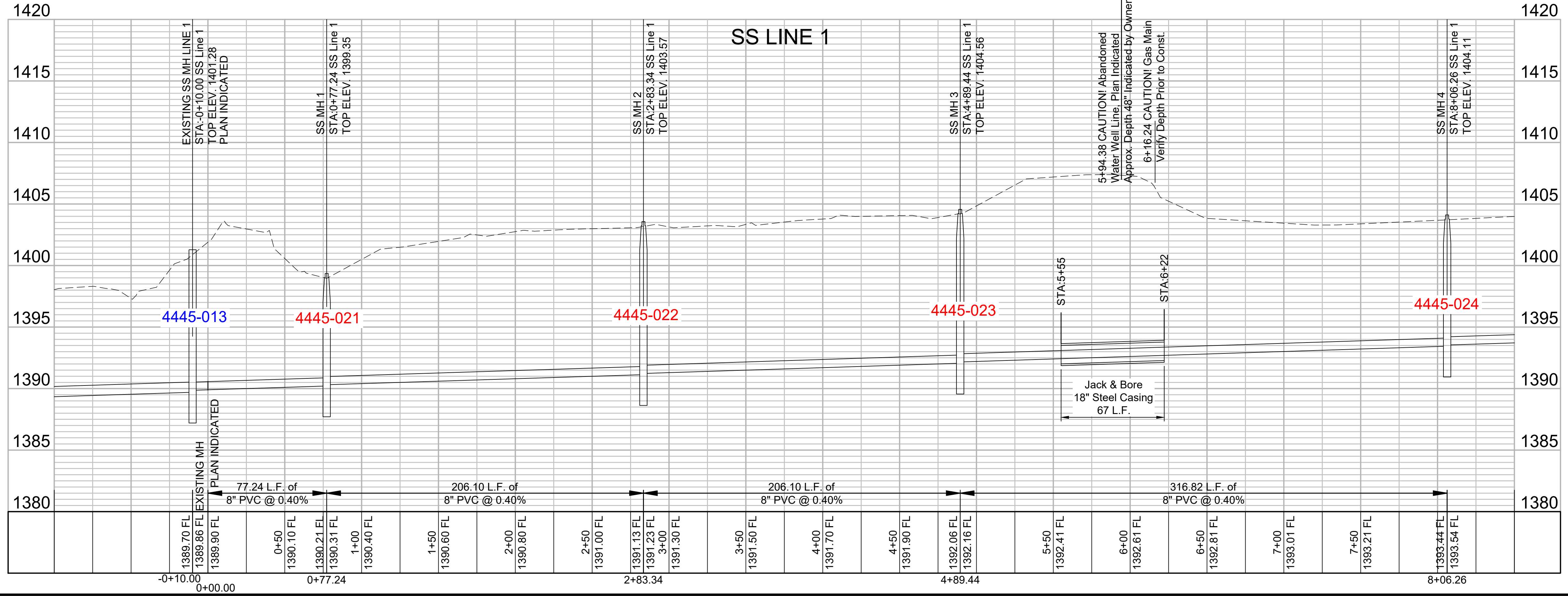
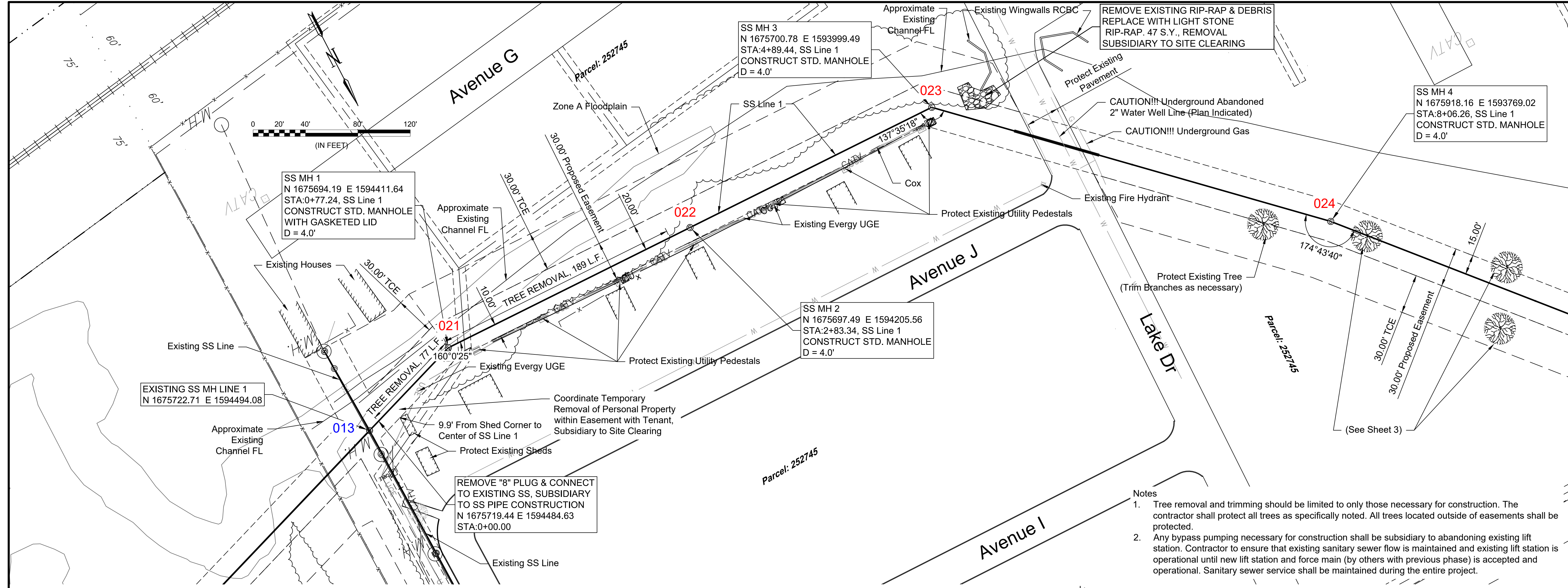
SS Line 1  
 (1 of 2)

JOB NO.: 19T41008  
 DATE: Jul 2020  
 DESIGNED BY: MTD  
 DRAWN BY: MCP

BAR IS ONE INCH ON ORIGINAL DRAWING  
 IF NOT ONE INCH ON THIS SHEET, ADJUST SCALES ACCORDINGLY.

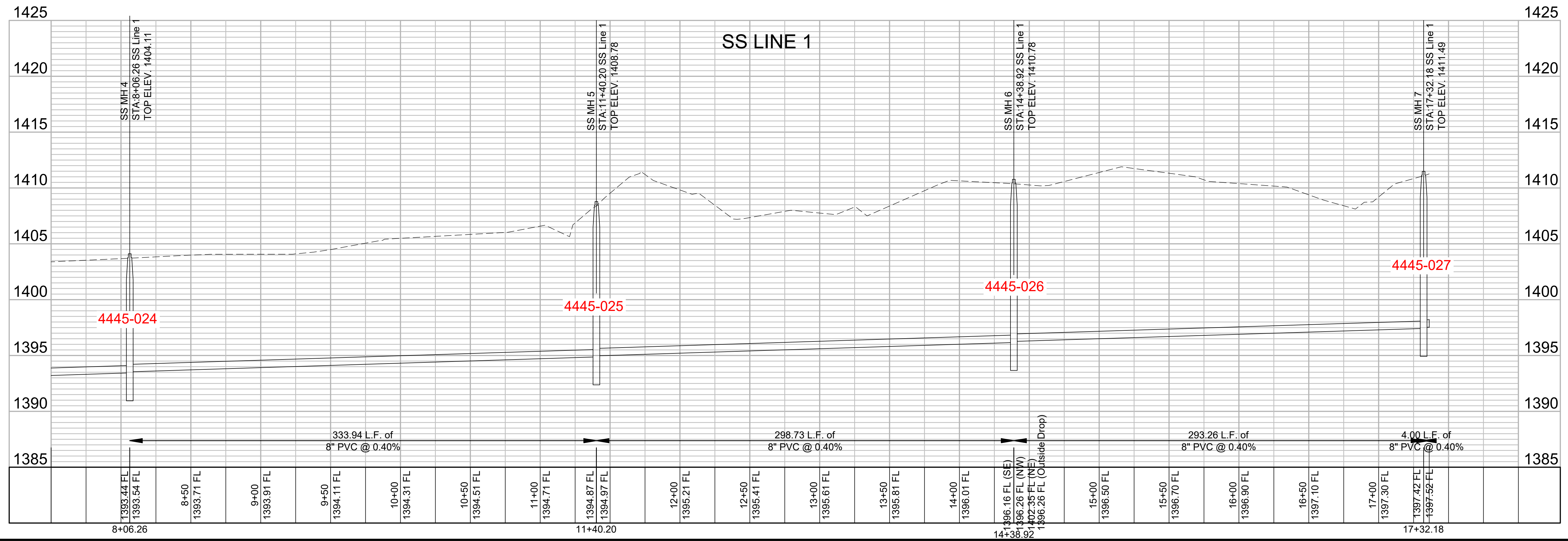
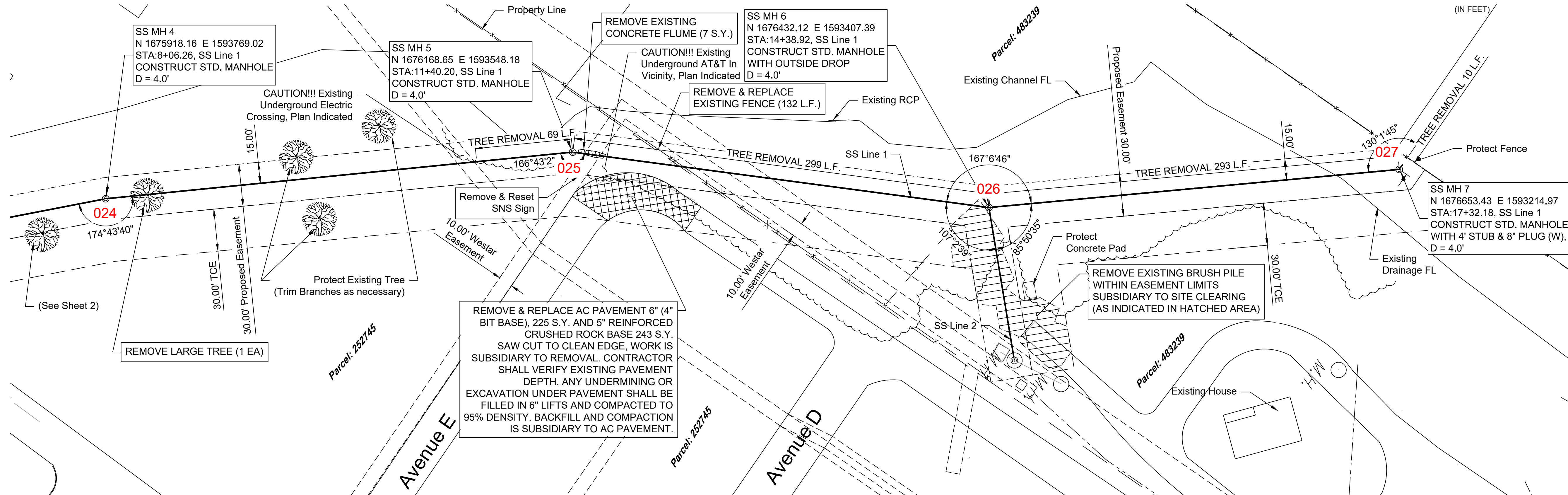
DRAWING NUMBER

SHEET NUMBER **2** OF **15**

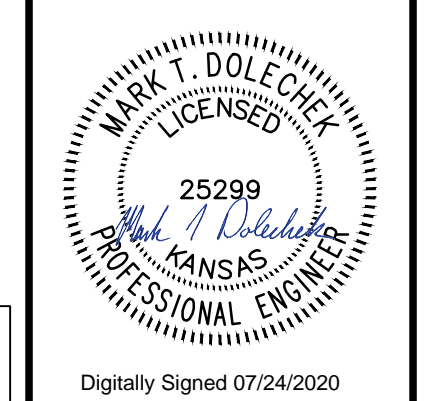


File: L:\2019\19T41008 - CoW Sanitary Sewer to LS47\Drawings\CAD\Plan Sheets\SS Line 1.dwg Last Save: 7/24/2020 8:57 AM Last saved by: MTDolechek  
 Last plotted by: Dolechek, Mark T. Plot Style: --- Plot Scale: 1:2.865 Plot Date: 7/24/2020 9:00 AM Plotter used: None

- Notes
1. Tree removal and trimming should be limited to only those necessary for construction. The contractor shall protect all trees as specifically noted. All trees located outside of easements shall be protected.
  2. Any bypass pumping necessary for construction shall be subsidiary to abandoning existing lift station. Contractor to ensure that existing sanitary sewer flow is maintained and existing lift station is operational until new lift station and force main (by others with previous phase) is accepted and operational. Sanitary sewer service shall be maintained during the entire project.



File: L:\2019\19T41008 - CoW Sanitary Sewer to LS47\Drawings\C3D\Plan Sheets\SS Line 1.dwg Last Save: 7/24/2020 8:12 AM Last saved by: MTDolechek  
 Last plotted by: Dolechek, Mark T. Plot Style: --- Plot Scale: 1:2.565 Plot Date: 7/24/2020 9:26 AM Plotter used: None



REV.	DATE	DESCRIPTION	BY



CITY OF WICHITA  
 WICHITA, KANSAS  
 Sanitary Sewer from  
 Lift Station 47

SS Line 1  
 (2 of 2)

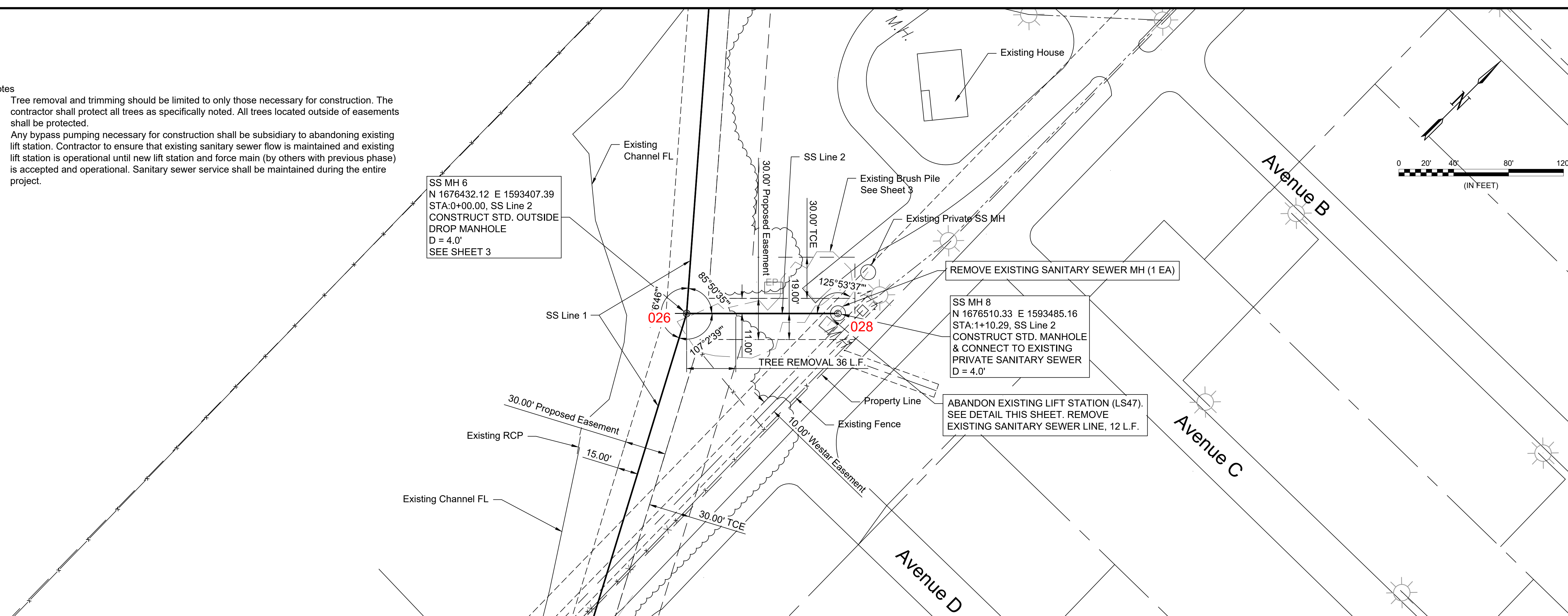
JOB NO.: 19T41008  
 DATE: Jul 2020  
 DESIGNED BY: MTD  
 DRAWN BY: MCP

BAR IS ONE INCH ON ORIGINAL DRAWING  
 IF NOT ONE INCH ON THIS SHEET, ADJUST SCALES ACCORDINGLY.

DRAWING NUMBER

SHEET NUMBER **3** OF **15**

- Notes
1. Tree removal and trimming should be limited to only those necessary for construction. The contractor shall protect all trees as specifically noted. All trees located outside of easements shall be protected.
  2. Any bypass pumping necessary for construction shall be subsidiary to abandoning existing lift station. Contractor to ensure that existing sanitary sewer flow is maintained and existing lift station is operational until new lift station and force main (by others with previous phase) is accepted and operational. Sanitary sewer service shall be maintained during the entire project.



© 2018 GARVER, LLC  
THIS DOCUMENT, ALONG WITH THE IDEAS AND DESIGNS CONVEYED HEREIN, SHALL BE CONSIDERED INSTRUMENTS OF PROFESSIONAL SERVICE AND ARE PROPERTY OF GARVER, LLC. ANY USE, REPRODUCTION, OR DISTRIBUTION OF THIS DOCUMENT, ALONG WITH THE IDEAS AND DESIGN CONTAINED HEREIN, IS PROHIBITED UNLESS AUTHORIZED IN WRITING BY GARVER, LLC OR EXPLICITLY ALLOWED IN THE GOVERNING PROFESSIONAL SERVICES AGREEMENT FOR THIS WORK.

Mark T. Dolechek  
LICENSED PROFESSIONAL ENGINEER  
KANSAS  
25299  
Digitally Signed 07/24/2020

REV.	DATE	DESCRIPTION	BY



CITY OF WICHITA  
WICHITA, KANSAS

Sanitary Sewer from  
Lift Station 47

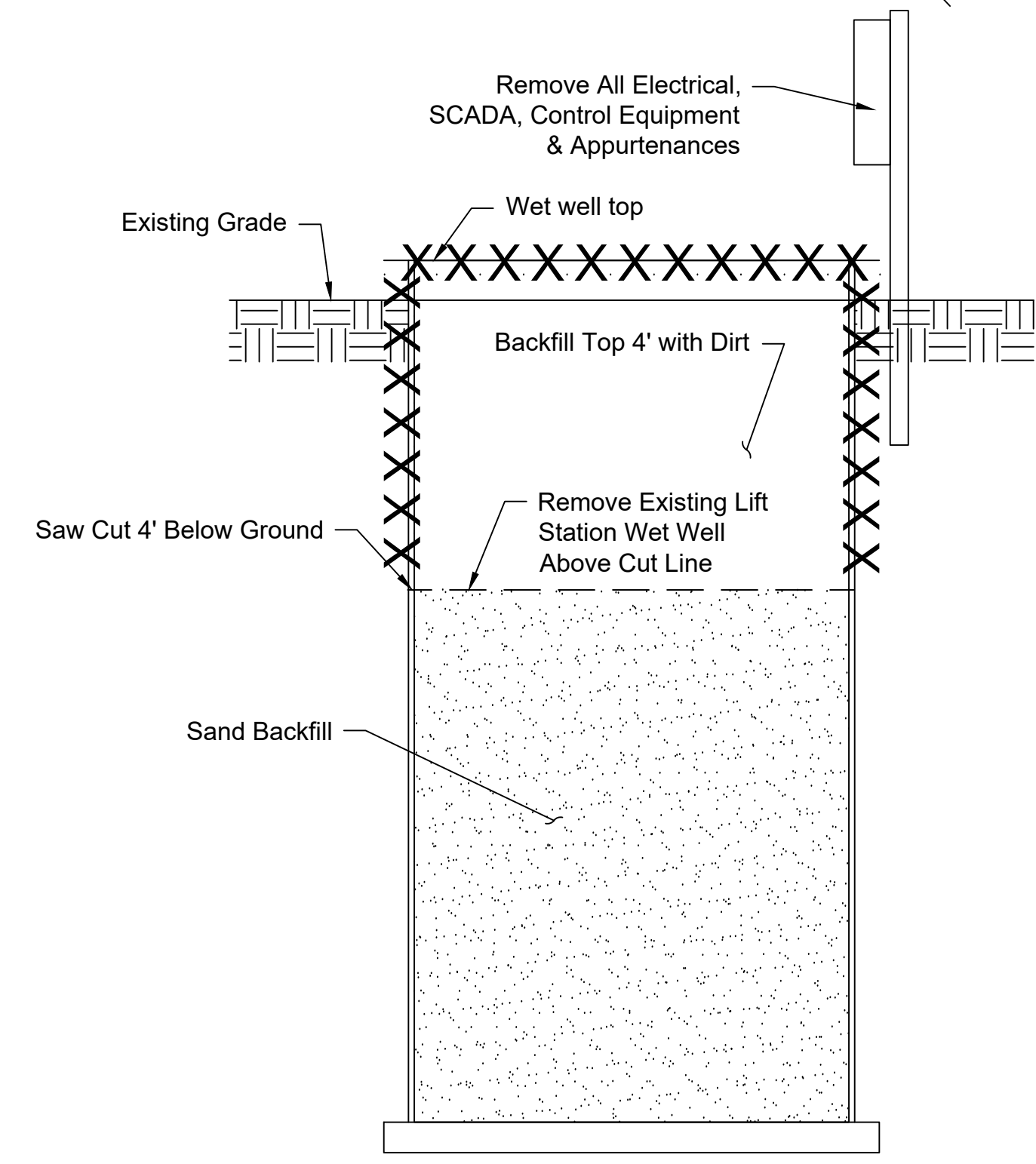
SS Line 2

JOB NO.: 19T41008  
DATE: Jul 2020  
DESIGNED BY: MTD  
DRAWN BY: MCP

BAR IS ONE INCH ON ORIGINAL DRAWING  
IF NOT ONE INCH ON THIS SHEET, ADJUST SCALES ACCORDINGLY.

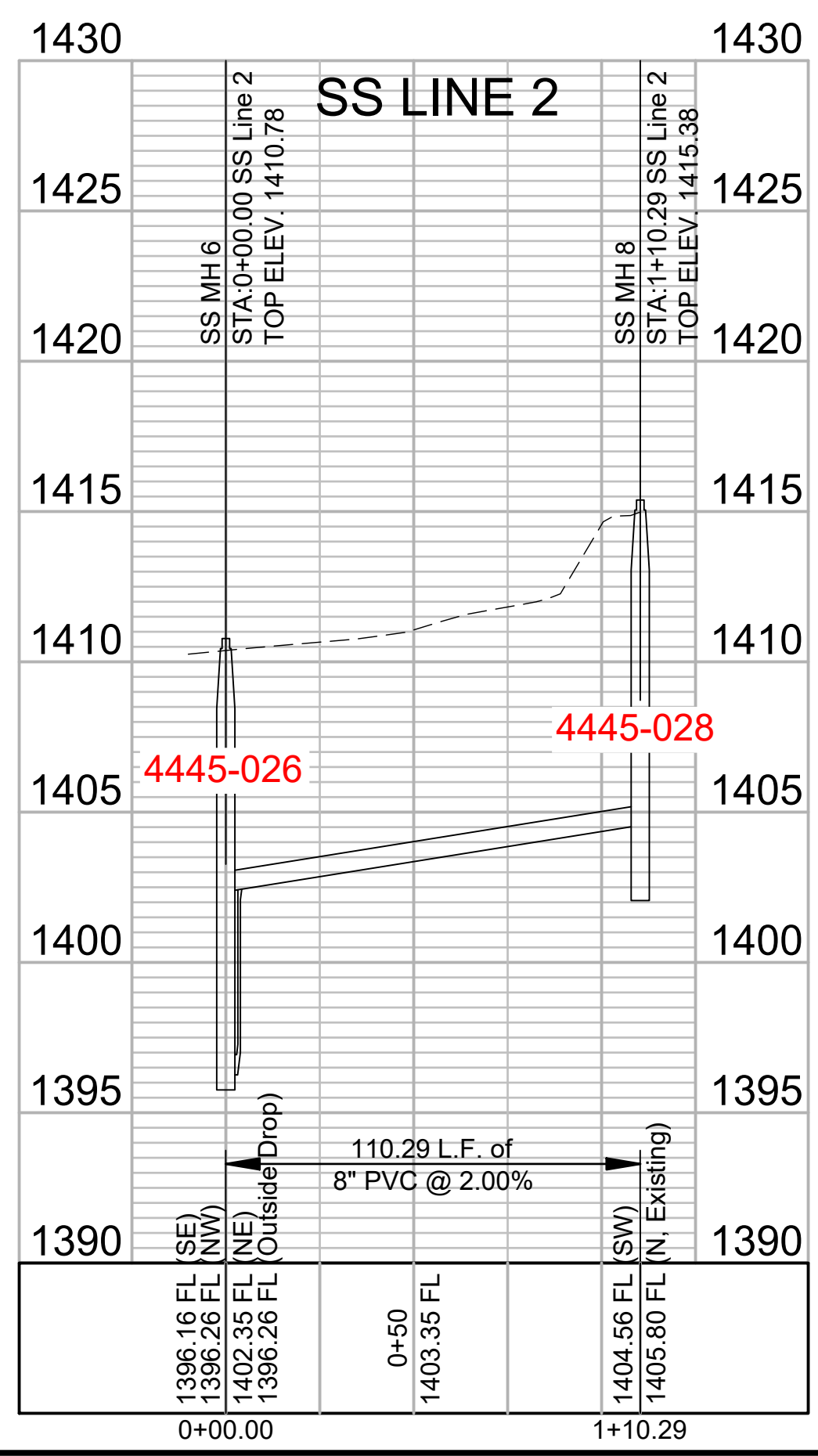
DRAWING NUMBER

SHEET NUMBER **4** OF **15**



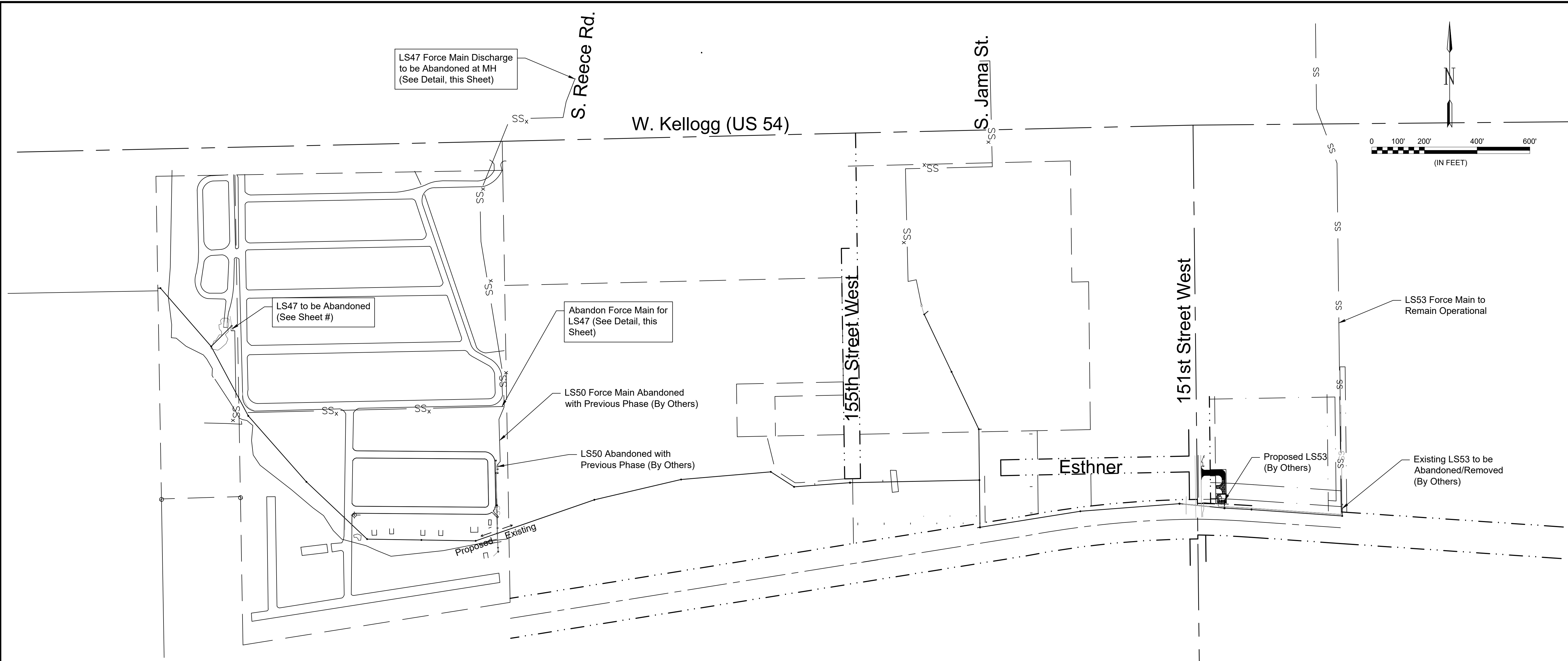
Lift Station 47 Wetwell Abandonment Detail

- Notes for Detail
1. Pumps, electrical, SCADA, and control equipment to be salvaged to City of Wichita.

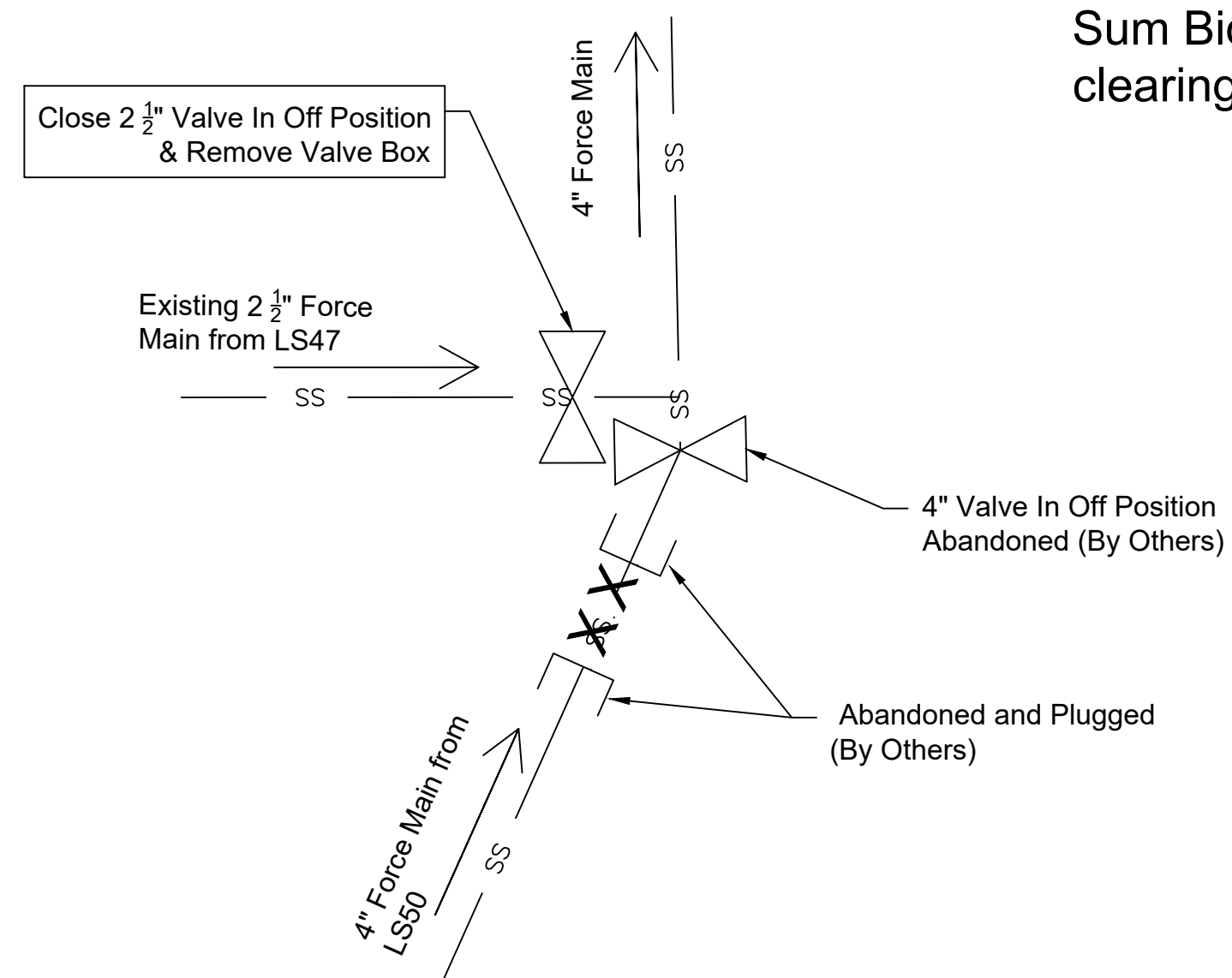


File: L:\2019\19T41008 - CoW Sanitary Sewer to LS47\Drawings\CAD\Plan Sheets\SS Line 2.dwg Last Save: 7/24/2020 8:21 AM Last saved by: MTDolechek  
Last plotted by: Dolechek, Mark T. Plot Date: 7/24/2020 8:27 AM Plotter used: None

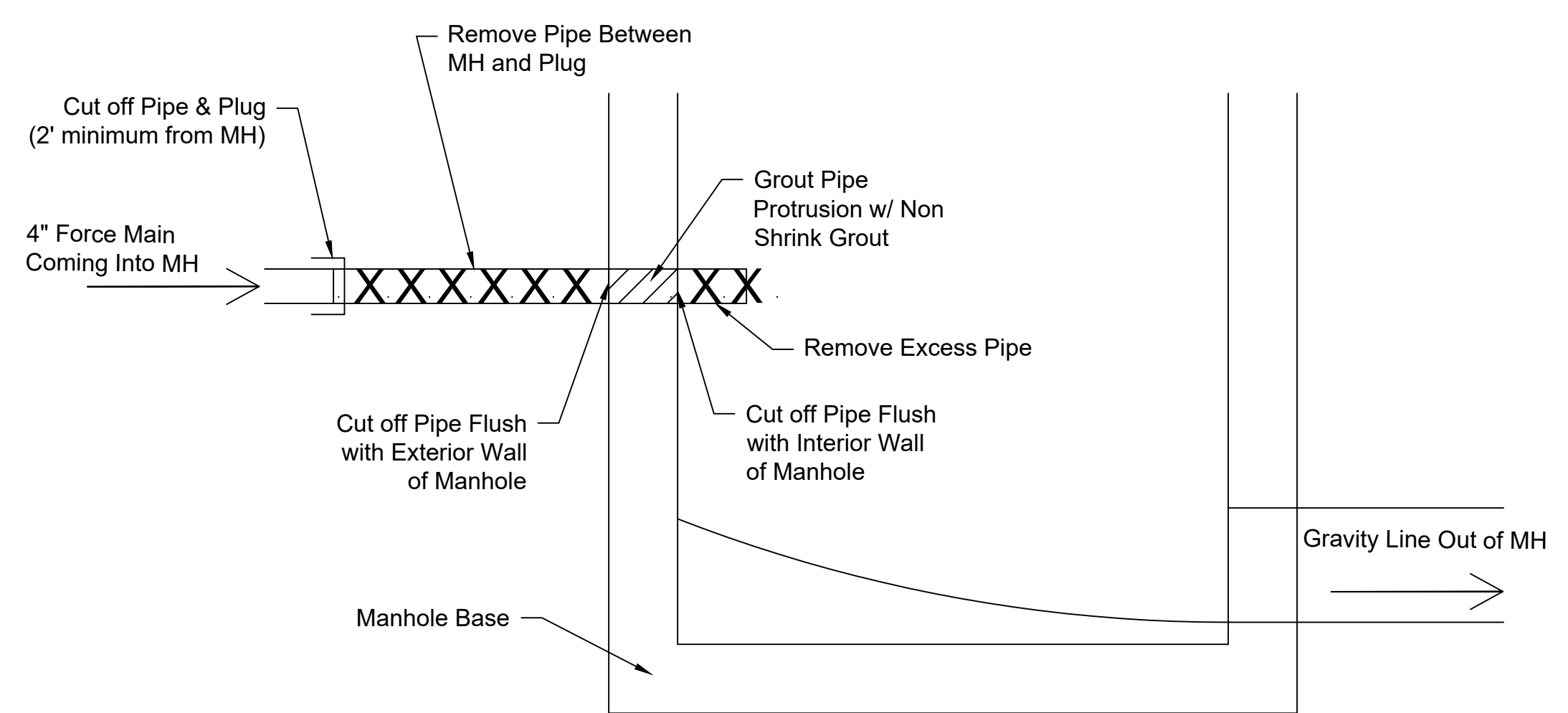
File: L:\2019\19141008 - CoW Sanitary Sewer to LS47\Drawings\C3D\Plan Sheets\Force Main Abandonment.dwg Last Save: 7/6/2020 2:46 PM Last saved by: MTDolechek  
 Last plotted by: Dolechek, Mark T. Plot Date: 7/24/2020 8:27 AM Plotter used: None



Abandonment of the existing force mains as shown on this sheet will be bid as a Lump Sum Bid Item for SS Force Main Abandonment. All labor, material, equipment and site clearing and restoration necessary shall be subsidiary to the lump sum bid item.



**LS47 FORCE MAIN ABANDONMENT DETAIL**  
(Not to Scale & Schematic in Nature)



**LS47 FORCE MAIN DISCHARGE ABANDONMENT DETAIL**  
(Not to Scale & Schematic in Nature)

**GARVER**  
 © 2018 GARVER, LLC  
 THIS DOCUMENT, ALONG WITH THE IDEAS AND DESIGNS CONVEYED HEREIN, SHALL BE CONSIDERED INSTRUMENTS OF PROFESSIONAL SERVICE AND ARE PROPERTY OF GARVER, LLC. ANY USE, REPRODUCTION, OR DISTRIBUTION OF THIS DOCUMENT, ALONG WITH THE IDEAS AND DESIGN CONTAINED HEREIN, IS PROHIBITED UNLESS AUTHORIZED IN WRITING BY GARVER, LLC OR EXPLICITLY ALLOWED IN THE GOVERNING PROFESSIONAL SERVICES AGREEMENT FOR THIS WORK.

MARK T. DOLECHEK  
 LICENSED  
 25299  
 KANSAS  
 PROFESSIONAL ENGINEER  
 Digitally Signed 07/24/2020

REV.	DATE	DESCRIPTION	BY



CITY OF WICHITA  
 WICHITA, KANSAS  
 Sanitary Sewer from  
 Lift Station 47

**Force Main Abandonment**

JOB NO.: 19T41008  
 DATE: Jul 2020  
 DESIGNED BY: MTD  
 DRAWN BY: MCP

BAR IS ONE INCH ON ORIGINAL DRAWING  
 IF NOT ONE INCH ON THIS SHEET, ADJUST SCALES ACCORDINGLY.

DRAWING NUMBER