

PLUG VALVE SCHEDULE

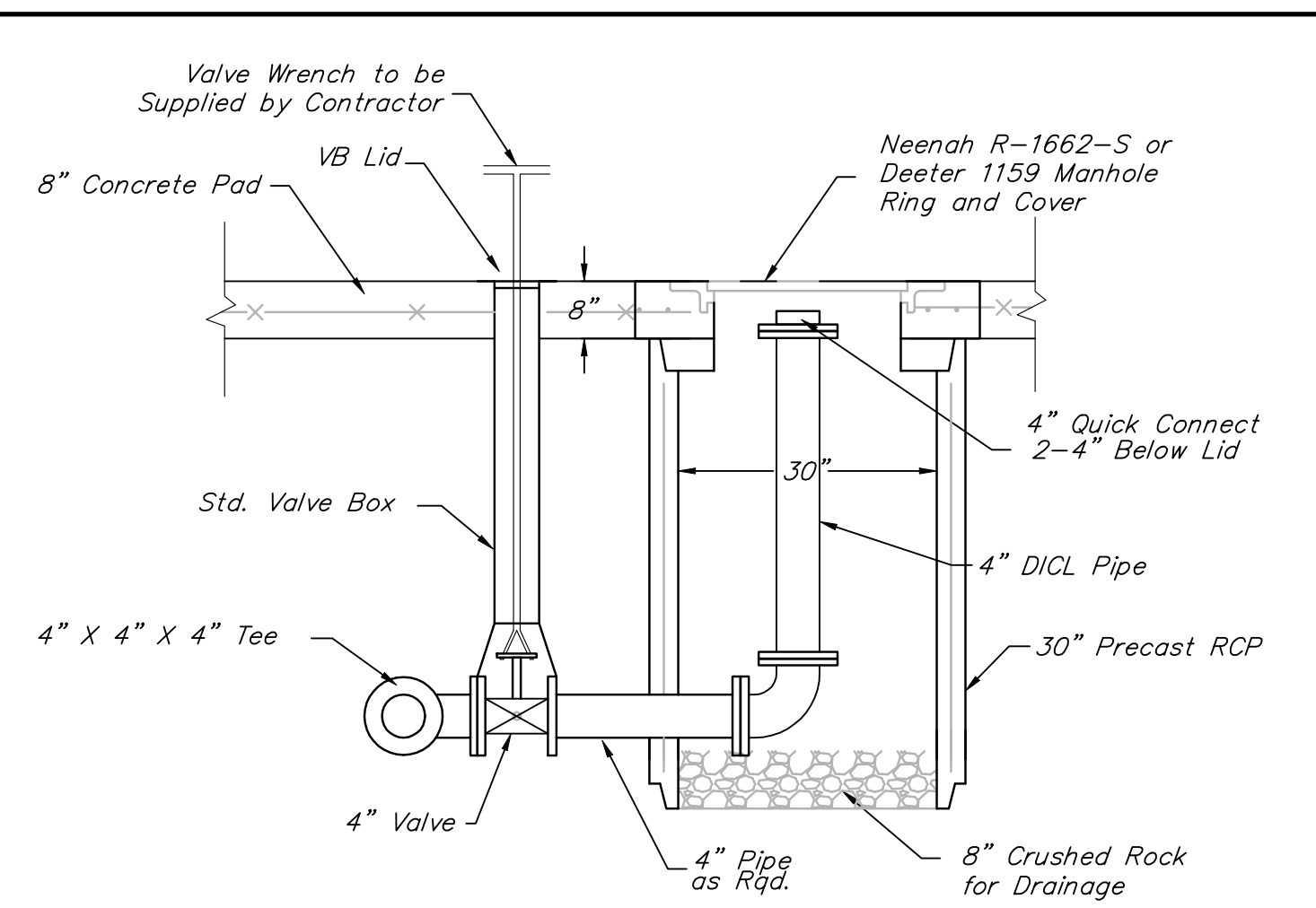
MARK	LOCATION	STATUS	SIZE	FITTINGS	OPERATOR
PV-1	VALVE VAULT	NEW	4"	FLANGE	GEARED OPERATOR W/ EXTENSION & 2" NUT
PV-2	VALVE VAULT	NEW	4"	FLANGE	GEARED OPERATOR W/ EXTENSION & 2" NUT
PV-3	VALVE VAULT	NEW	4"	FLANGE	GEARED OPERATOR W/ EXTENSION & 2" NUT

CHECK VALVE SCHEDULE

MARK	LOCATION	STATUS	SIZE	FITTINGS	OPERATOR
CV-1	VALVE VAULT	NEW	4"	FLANGE	LEVER & SPRING
CV-2	VALVE VAULT	NEW	4"	FLANGE	LEVER & SPRING

PUMP SCHEDULE

MARK	TYPE	GPM	HEAD (FT)	EFF. %	HP	RPM	ELECT.
P-1	SUBMERSIBLE	100	93.8	26% MIN.	10	1735	460/60/3
P-2	SUBMERSIBLE	100	93.8	26% MIN.	10	1735	460/60/3



**EMERGENCY PUMPING CONNECTION**

Contractor to contact Carl Miskimins with the Wichita Sewer Treatment Plant at 303-8784 to coordinate type of Quick Connect to be used.

- The Price Bid for Furnishing and Installing the Pump Station, including the Wet Well, Valve Vault, and Other Miscellaneous Appurtenances, shall include All Costs for Furnishing and Installing the Pump Station as Indicated in the Plans Complete in Place and in Operation. This Price Shall include the Cost of Constructing and/or Installing Compacted Subgrade, Concrete Pavement, Access Drive, Electrical Conduit, Electrical Wiring, Disconnect Switch, Pump Controls, Electrical Power Supply, Backup Generator, Propane Tank, Finished Grading, Fencing, Seeding, and any Other Incidentals Necessary to Complete the Work and Place the Pump Station into Satisfactory Operation. The Price Bid Shall include All Sanitary Sewer Pipe and Force Main Extended Outside the Slab as Shown in the Site Plan and Details.
- All Force Main Piping Shall be Ductile Iron (Flanged) to 5' Outside the Structures, Unless Otherwise Noted. All Interior Piping Shall be Cement Lined and Epoxy Coated Ductile Iron Pipe.
- Pipe Penetrations Thru the Wet Well, Valve Vault, and Concrete Pad Shall be Grouted Watertight With Non-Shrink Grout and Water Stop Gaskets as Required.
- The Contractor shall perform an Exfiltration Test on the complete Wet Well. The Wet Well shall be tested individually by securely plugging all inlet and outlet pipes. The Wet Well shall be filled to its full depth and then observed for at least six (6) hours. Exfiltration loss from the 6-foot diameter Wet Well shall not exceed the rate of 1.70 Gallons per foot of Wet Well depth per day. If exfiltration exceeds the maximum limits, the Contractor shall repair the leaks and defects, and then retest.
- The Contractor shall support all piping inside the Wet Well and Valve Vault as required.
- All hardware inside the Wet Well and Valve Vault, including but not limited to the Guide Bar, Hoist Chain, Chain Catch, Hooks, Nuts, Bolts, etc. shall be stainless steel. Nylon Rope will not be allowed in the Wet Well.

- Wet Well and Valve Vault design shall be subject to the same design requirements as Precast Manholes.
- The interior of the Wet Well shall be coated with a Sanitary Sewer Manhole coating as manufactured by Ravens Lining Systems, Tnemec Company, or approved equal.
- Backfill around the Wet Well and under the Valve Vault and Pad shall be a low volume change material compacted to 95% ASTM D-1557.
- The Contractor shall coordinate with Westor Energy to extend electric services to the Pump Station Site. The Contractor shall verify the electrical service costs & requirements PRIOR to Bidding. The Contractor shall allow a minimum of 3 weeks for these services to be completed. ALL COST INCURRED TO EXTEND THESE SERVICES TO THE SITE SHALL BE INCLUDED IN LUMP SUM BID ITEM "PUMP STATION MODULE."
- The Contractor shall verify all requirements and dimensions of the Generator Pad with the Generator Supplier prior to construction.
- No Electrical Connections will be Allowed within the Wetwell.
- Contact Carl Miskimins with the City of Wichita Sewer Treatment Plant at 303-8787 PRIOR to Lift Station Start-up.
- The Contractor Shall Be Responsible for All Permit and Review Fees.
- The Utility Shelter shall be painted to blend into to the surroundings.

Drawing File: E:\eng\Edge Water Addition\Office\Details\Pump Station.dwg

Design: TPV/DMV Project No. 07-06-E863 EDGE WATER ADDITION

Drawn: TPV/DMV

Approved:

Scale: NOTED

**PUMP STATION DETAILS**

EDGE WATER SANITARY SEWER PUMP STATION

**Baughman Company, P.A.**  
 315 Ellis St. Wichita, KS 67211 P 316-262-7271 F 316-262-0149  
 ENGINEERING | SURVEYING | PLANNING | LANDSCAPE ARCHITECTURE

APRIL 2008

SHEET

18

OF

28