

# STORM SEWER IMPROVEMENTS

TO SERVE

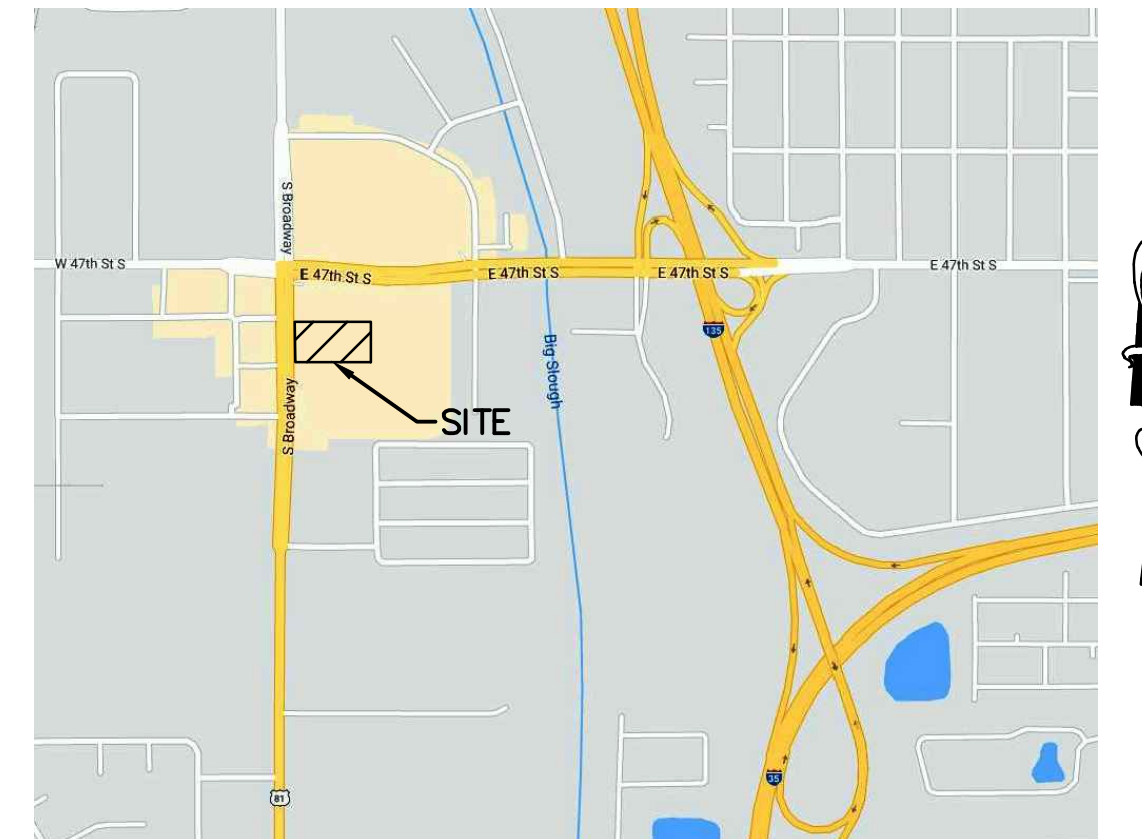
## CLUB CARWASH

47TH ST. & S. BROADWAY ST.

CITY OF WICHITA, KANSAS

GARY JANZEN, P.E. CITY ENGINEER

PROJECT NUMBER  
2020-653 PPD (133119)



VICINITY MAP  
NO SCALE

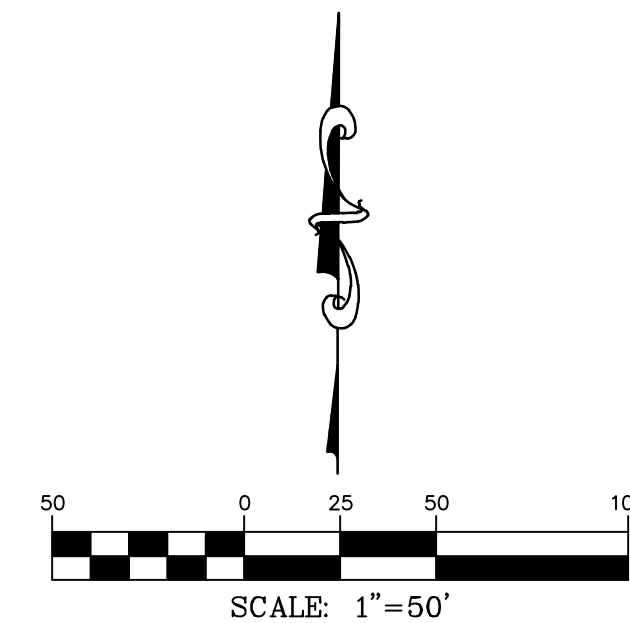
### GENERAL NOTES

- THE CONTRACTOR SHALL COMPLY WITH ALL APPLICABLE SAFETY REGULATIONS. ALL CONSTRUCTION SHALL BE COMPLETED FOLLOWING CURRENT CITY STANDARDS SPECIFICATIONS AND SPECIAL PROVISIONS.
- CONTRACTOR WILL BE REQUIRED TO PROVIDE NOTICE TO UTILITY COMPANIES A MINIMUM OF SEVENTY-TWO (72) HOURS PRIOR TO AND EXCAVATION, AS FOLLOWS:  
  
KANSAS ONE-CALL 687-2470  
  
THE CONTRACTOR MUST NOTIFY THE FOLLOWING IN CASE OF AN EMERGENCY:  
  
AT&T 1-800-246-8464  
BLACK HILLS ENERGY 1-800-694-8989  
CITY OF WICHITA WATER & SEWER 1-316-219-8921  
CITY OF WICHITA STORMWATER 1-316-268-4090  
CITY OF WICHITA TRAFFIC 1-316-268-4034  
COX COMMUNICATIONS 1-888-249-3530  
KANSAS GAS SERVICE 1-888-482-4950  
EVERGY 1-800-544-4857
- UTILITY SERVICE LINES, POLES, ETC. ARE TO BE ADJUSTED AS NECESSARY BY OTHERS PRIOR TO CONSTRUCTION UNLESS THE PLANS SPECIFICALLY CALL FOR THEIR ADJUSTMENT BY THE CONTRACTOR OR UNLESS THE PLANS SPECIFICALLY IDENTIFY A UTILITY TO BE ADJUSTED BY ITS OWNER DURING CONSTRUCTION. EXISTING UTILITIES AND THEIR LOCATION, AS SHOWN ON THE PLANS, REPRESENT THE BEST INFORMATION OBTAINABLE FOR DESIGN. THE CONTRACTOR WILL BE REQUIRED TO WORK AROUND EXISTING UTILITIES WITHIN THE RIGHT-OF-WAY WHICH DO NOT CONFLICT WITH PROPOSED CONSTRUCTION.
- RUBBLE FROM THE REMOVAL OF MISCELLANEOUS STRUCTURES AND EXCESS EXCAVATION WHICH IS TO BE WASTED SHALL BE DISPOSED OF ON SITES TO BE PROVIDED BY THE CONTRACTOR. THESE SITES SHALL BE APPROVED BY THE ENGINEER AS TO SUITABILITY, APPEARANCE AND SITE LOCATION. LOCATIONS, IN THE OPINION OF THE ENGINEER, THAT WILL LEAVE AN UNSIGHTLY APPEARANCE WILL NOT BE APPROVED. ALL DISPOSAL SITES APPROVED BY THE KANSAS DEPARTMENT OF HEALTH AND ENVIRONMENT, MATERIAL EITHER STOCKPILED OR DISPOSED OF IN A FLOOD PLAIN WILL REQUIRE A KANSAS STATE BOARD OF AGRICULTURE PERMIT. ANY MATERIAL DUMPED IN WATERS OF THE UNITED STATES OR WETLANDS IS SUBJECT TO U.S. CORPS. OF ENGINEERS PERMITTING REGULATIONS. ANY MATERIAL BURIED OR STOCKPILED BEYOND APPROVED CONSTRUCTION LIMITS WILL REQUIRE ADDITIONAL ARCHAEOLOGICAL INVESTIGATIONS UNLESS BURIED IN A PREVIOUSLY APPROVED BORROW LOCATION.
- TREES AND SHRUBS IN PUBLIC RIGHT-OF-WAY WHICH ARE IN DIRECT CONFLICT WITH PROPOSED NEW CONSTRUCTION SHALL BE REMOVED BY THE CONTRACTOR WITH THE CITY ENGINEER'S APPROVAL. TREES AND SHRUBS WHICH ARE NOT IN DIRECT CONFLICT WITH PROPOSED NEW CONSTRUCTION SHALL BE SAVED AND PROTECTED FROM DAMAGE.
- THE CONTRACTOR SHALL GIVE ALL PROPERTY OWNERS AND/OR TENANTS OF DEVELOPED PROPERTY ADJUTING THE CONSTRUCTION OF THIS PROJECT A MINIMUM OF TEN (10) DAYS NOTICE PRIOR TO START OF CONSTRUCTION.
- THE CONTRACTOR SHALL BE RESPONSIBLE FOR PRESERVING PROPERTY IRONS. THE CONTRACTOR WILL BE REQUIRED TO RE-ESTABLISH ANY PROPERTY IRONS WHICH ARE DAMAGED OR DESTROYED BY HIS CONSTRUCTION OPERATIONS. SUCH IRONS SHALL BE RE-ESTABLISHED BY A LICENSED LAND SURVEYOR IN ACCORDANCE WITH STATE LAWS.
- THE ENGINEERING DIVISION SHALL FIELD LOCATE WATER VALVES ONE TIME DURING CONSTRUCTION WHEN REQUESTED BY THE CONTRACTOR. IT SHALL BE THE CONTRACTOR'S RESPONSIBILITY TO PRESERVE SUCH FIELD LOCATIONS DURING THE CONSTRUCTION PROCESS. WATER VALVES, VALVE BOXES OR FIRE HYDRANTS DAMAGED DURING CONSTRUCTION SHALL BE REPAIRED BY CONTRACTOR AT HIS OWN EXPENSE. VALVE BOXES AND WATER METERS WITHIN THE PROJECT LIMITS SHALL BE ADJUSTED TO MATCH FINAL GRADES BY THE CONTRACTOR.
- THE CONTRACTOR SHALL NOTIFY THE INSPECTING ENGINEER AND TOM MASON AT 316-268-4574 WITH THE CITY OF WICHITA WITH THE ANTICIPATED CONSTRUCTION START DATE AND NOTIFY THEM OF PROJECT COMPLETION. STAKING AND INSPECTION OF THIS PROJECT WILL BE THE RESPONSIBILITY OF THE CONTRACTOR.
- IF TRAFFIC WILL BE IMPACTED BY CONSTRUCTION, A TRAFFIC CONTROL PLAN MUST BE SUBMITTED AND APPROVED BY THE CITY TRAFFIC ENGINEER, MIKE ARMOUR AT traffic@wichita.gov BEFORE CONSTRUCTION CAN BEGIN. THE CONTRACTOR SHALL BE RESPONSIBLE FOR ALL TRAFFIC CONTROL MEASURES TO FACILITATE CONSTRUCTION. ALL CONSTRUCTION ZONE MARKINGS AND SIGNAGE SHALL CONFORM TO THE LATEST VERSION OF THE MANUAL ON UNIFORM TRAFFIC CONTROL DEVICES (MUTCD) AS PUBLISHED BY THE US DEPT. OF TRANSPORTATION, FEDERAL HIGHWAY ADMINISTRATION. ALL COSTS ASSOCIATED WITH CONSTRUCTION MARKINGS AND SIGNAGE SHALL BE THE CONTRACTOR'S RESPONSIBILITY.
- ALL ELEVATIONS SHOWN ARE NAVD 88.
- ALL AREAS DISTURBED DURING CONSTRUCTION THAT WILL NOT BE UNDER PROPOSED PAVEMENT SHALL BE RESTORED TO MATCH EXISTING CONDITIONS.
- ANY SIDEWALK, DRIVE APPROACH, CURB, OR STREET PAVEMENT REMOVED TO CONSTRUCT PROJECT MUST HAVE A PAVEMENT CUT PERMIT AND BE REPLACED BY THE CITY CONTRACTOR. PERMITS CAN BE OBTAINED BY CALLING 316-268-4501 OR 316-268-4480.
- CITY MAINTENANCE OF STORM SEWER ENDS AT THE LAST STRUCTURE IN THE EASEMENT OR RIGHT-OF-WAY.
- A PORTION OF EXCESS EXCAVATED MATERIAL SHALL BE MOUNDED AROUND MANHOLES WHICH EXTEND MORE THAN ONE (1) FOOT ABOVE THE EXISTING GROUND. SUCH MOUND SHALL BE CONSTRUCTED WITH NEW DEVELOPMENT A SIX (6) FOOT DIAMETER FLAT TOP WITH 4 TO 1 SIDE SLOPES DOWN TO THE ORIGINAL GROUND. THE ELEVATION OF THE FLAT TOP OF THE MOUND SHALL BE 0.4 FOOT BELOW THE TOP TO THE MANHOLE.
- CONTRACTOR SHALL LIMIT THE EXTENT OF TRENCH OPENINGS OVERNIGHT AND WEEKENDS TO LESS THAN 50 FEET.
- THE INSPECTING FIRM SHALL SUBMIT TO THE CITY STORMWATER MAINTENANCE DIVISION A DIGITAL COPY OF THE CCTV INSPECTION OF THE CONDUITS AND STRUCTURES FOLLOWING CONSTRUCTION. THE DIGITAL FILE FORMATION SHALL BE COMPATIBLE WITH THE CITY INPUT TEMPLATE. A COPY OF THE TEMPLATE IS AVAILABLE UPON REQUEST AT 316-268-4090.
- THE CONTRACTOR SHALL PROTECT FROM DAMAGE AND SUPPORT EXISTING UTILITIES THROUGH CONSTRUCTION AS APPROVED BY THE UTILITY OWNER AND THE ENGINEER AT THE CONTRACTOR'S EXPENSE.

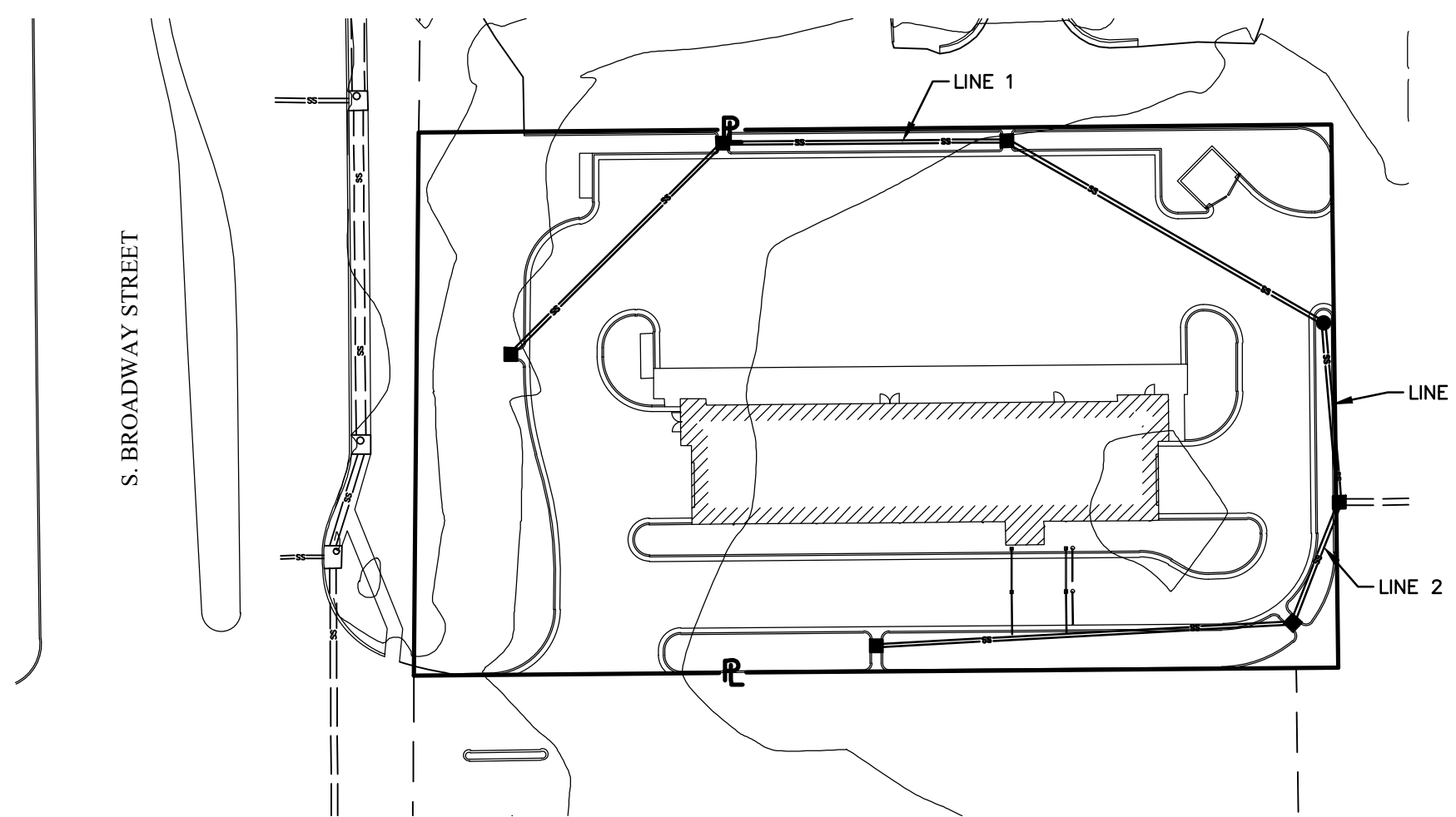
**AS BUILTS**

4-26-21 John J Schuller

117 E. Lewis,  
Wichita, KS 67202 (316)264-0242



SHEET INDEX	SHEET
SITE PLAN	1
PLAN AND PROFILE	2
EROSION CONTROL PLAN	3
DETAILS/SPECIFIC/EROSION CONTROL	4



### BENCHMARKS

BM#: BM#901 FROM SADDLE CREEK ADDITION. SQUARE CUT ON TOP OF CURB, AT THE SOUTHWEST CORNER OF MCDONALD'S LOT AND EAST SIDE OF BROADWAY AVENUE, 25 FEET WEST (±) OF THE NORTHWEST CORNER OF LOT 3.  
ELEV. = 1274.44 (NAVD 88)

SEPTEMBER, 2020



- CIVIL ENGINEERING
- LAND SURVEYING
- ARCHITECTURE
- SITE DEVELOPMENT
- MASTER PLANNING
- GENERAL CONSULTING

8 EAST MAIN STREET, WENTZVILLE, MISSOURI 63385  
TELEPHONE (636) 332-4574  
FAX (636) 327-0760  
E-MAIL wentmail@cochraneng.com

**STORMWATER CERTIFICATION:**

NEW DEVELOPMENT OR REDEVELOPMENT (CIRCLE ONE)

STORMWATER PERMIT # SW02020-0043

NOI PERMIT # S-AR94-1647/KSR115804

THESE CONSTRUCTION PLANS WERE PREPARED IN ACCORDANCE WITH THE CURRENT STORMWATER MANAGEMENT REGULATIONS AS SET FORTH IN THE CITY OF WICHITA'S STORMWATER MANAGEMENT ORDINANCE 16.32 AND THE POLICIES/GUIDELINES PRESENTED IN THE WICHITA/SEDGWICK COUNTY STORMWATER MANUAL.

SITE AREA (ACRES) = 1.12

DISTURBED AREA (ACRES) = 1.05

WATER QUALITY TREATMENT: OFFSITE BMP

DOWNSTREAM CHANNEL PROTECTION: NONE

DETENTION: NONE

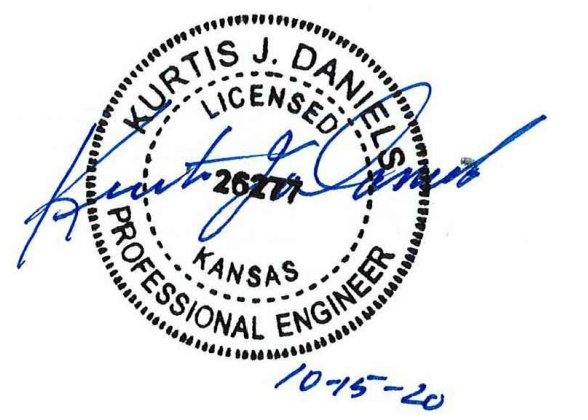
THE BMP USED FOR THIS DEVELOPMENT IS PROGRAM

APPROVED AS NOTED  
BY WICHITA PUBLIC WORKS ENGINEERING  
& STORMWATER DIVISION

ENGINEERING SETH GOTCHEY 10-15-2020

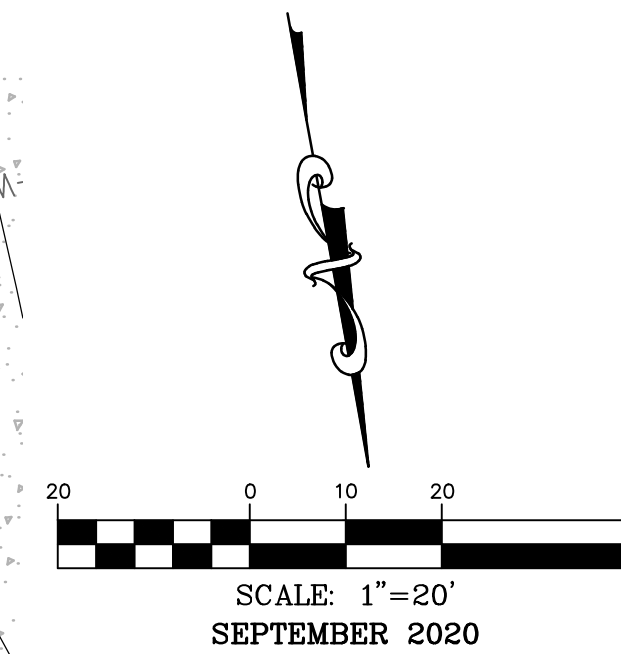
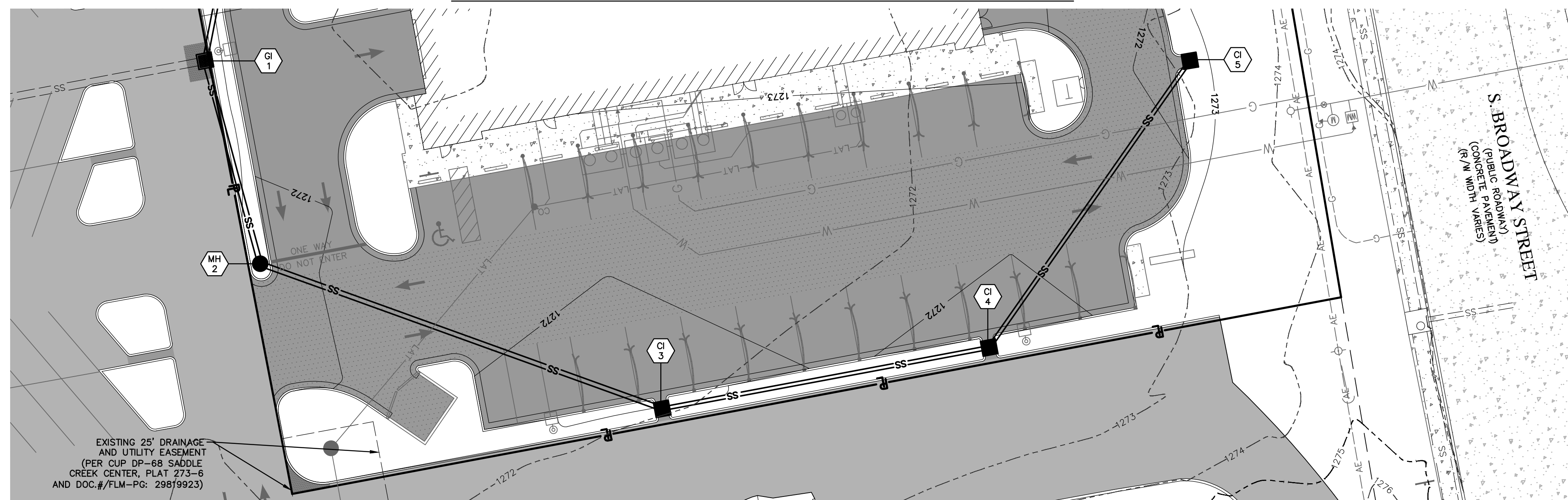
STORMWATER JOSEPH HICKLE 10-15-2020

NOTE TO CONTRACTORS  
INSPECTION AND TESTING FOR THIS PROJECT IS TO BE PROVIDED BY A LICENSED CONSULTING ENGINEERING FIRM UNDER CONTRACT WITH THE OWNER/DEVELOPER. SAID INSPECTION TO BE IN ACCORDANCE WITH THE CITY OF WICHITA STANDARD CONSTRUCTION ENGINEERING PRACTICES AND CERTIFIED BY A LICENSED PROFESSIONAL ENGINEER IN THE STATE OF KANSAS. NO WORK SHALL BE PERFORMED BY THE CONTRACTOR WITHOUT SUCH INSPECTION NOR SHALL ANY WORK BE COMMENCED WITHOUT WRITTEN AUTHORIZATION BY CITY ENGINEERING. ALL CONSTRUCTION AND MATERIALS SHALL COMPLY WITH THE CURRENT CITY OF WICHITA SPECIFICATIONS AND STANDARDS AND SPECIAL PROVISIONS (ON FILE AND AVAILABLE AT Wichita.gov).  
AN APPROVED COPY OF THESE PLANS SIGNED BY CITY STAFF ARE REQUIRED ON-SITE.

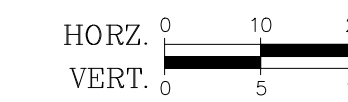
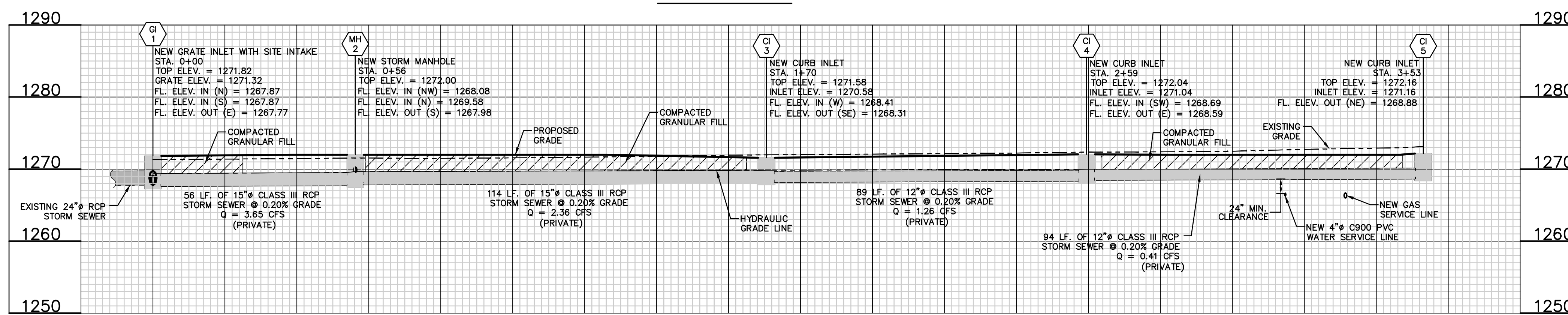




# PLAN AND PROFILE



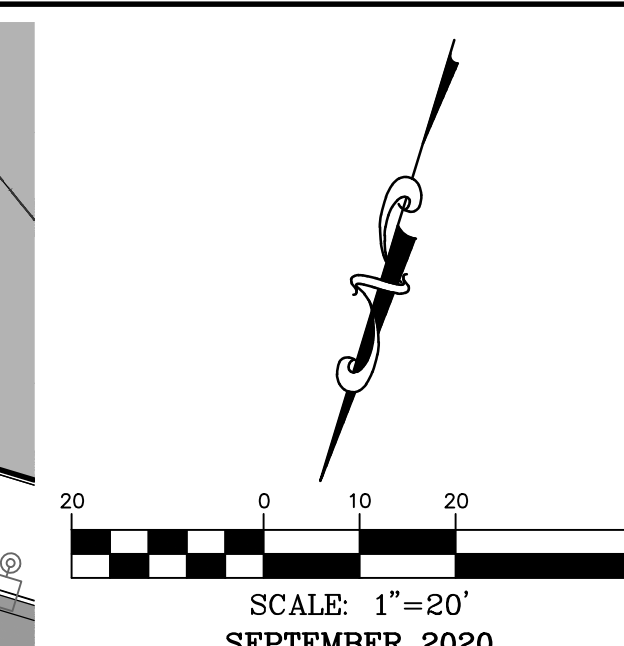
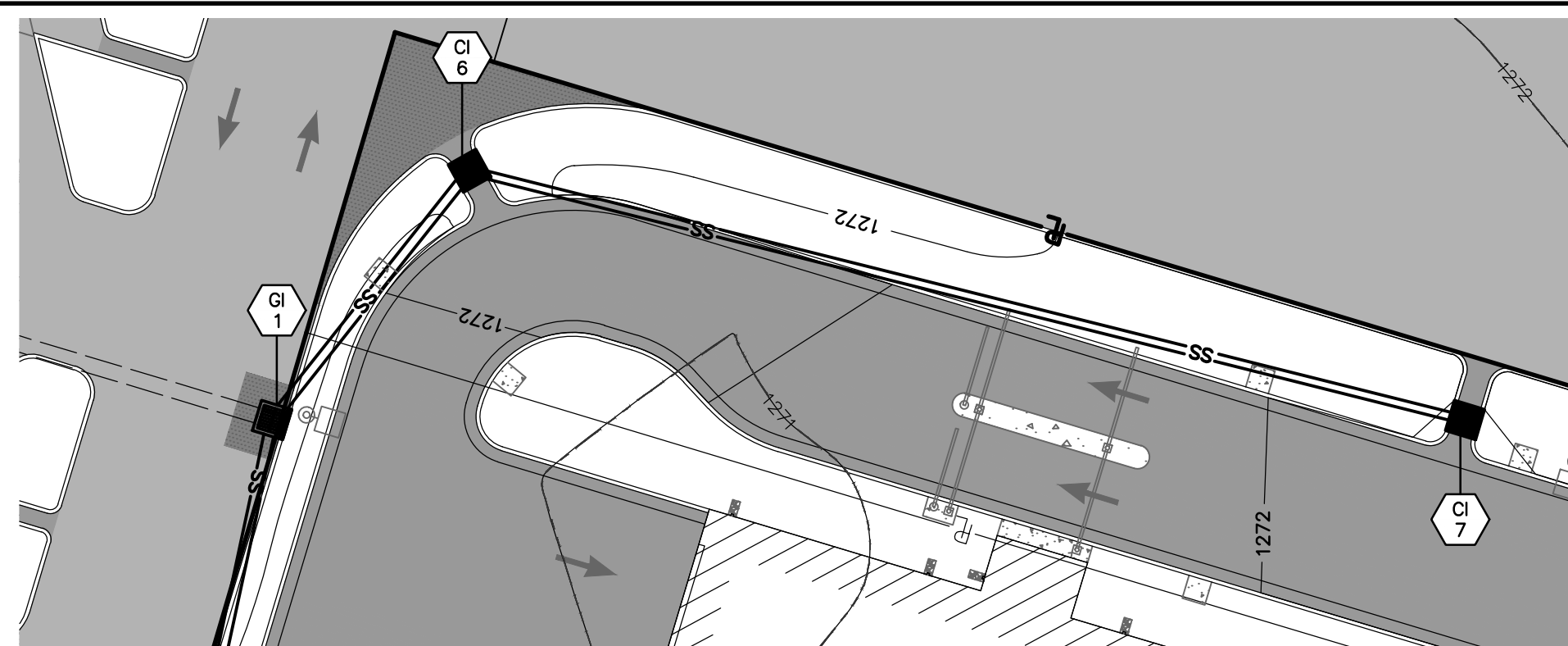
PLAN VIEW 1



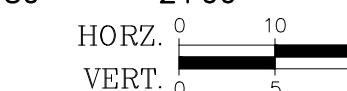
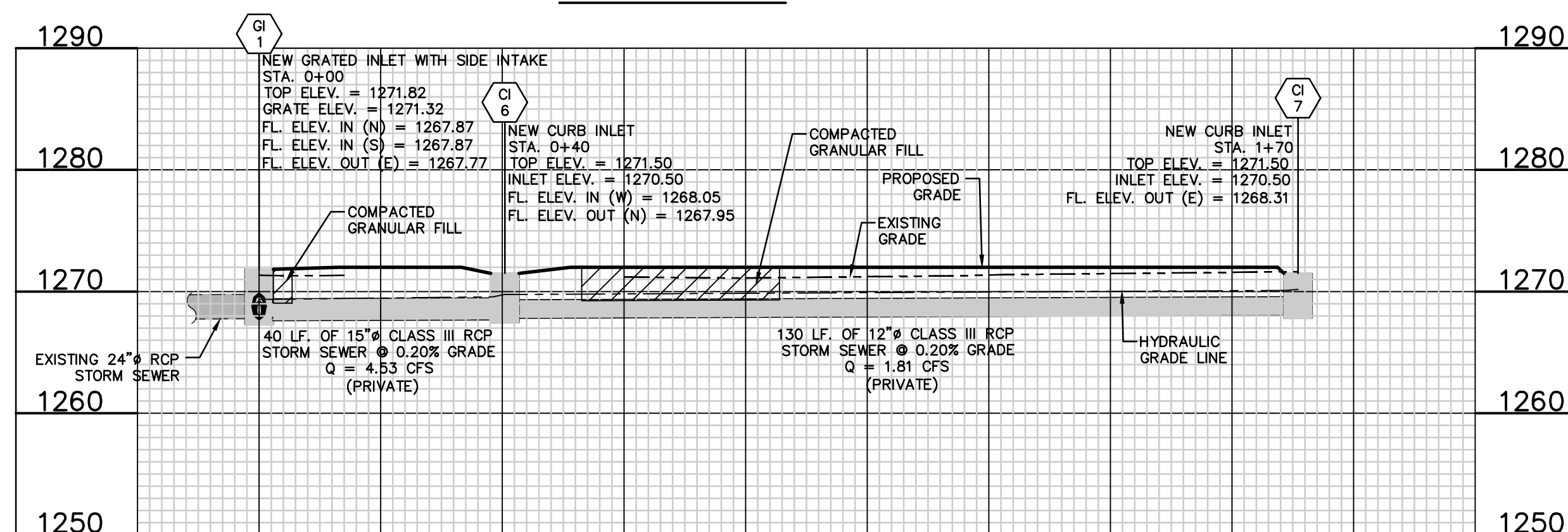
PROFILE VIEW 1

**AS BUILTS**

**KEMILLER ENGINEERING PA**  
117 E. Lewis, Wichita, KS 67202 (316)264-0242



PLAN VIEW 2



PROFILE VIEW 2

<b>OWNER:</b> SCCI, LLC 4911 S. MERIDIAN WICHITA, KS 67217	<b>DEVELOPER:</b> CLUB CARWASH OPERATING, LLC 1213 OLD HWY 63, STE 101 COLUMBIA, MO 65201
---	--

636-332-4574 (tel.)  
636-327-0760 (fax)  
www.ochran.com

**OC HRAN**

- Civil Engineering
- Land Surveying
- Architecture
- Site Development
- General Consulting
- Master Planning

North Office  
8 East Main Street  
Wentzville, Missouri 63385

Kansas State Certificate of Authority Numbers:  
E-2927

Two working days prior to the start of any excavation call 1-800-OC-SAFE for utility location information. All OSHA rules & regulations construction required by these plans shall be strictly followed (i.e. Trenching, Blasting, etc.)

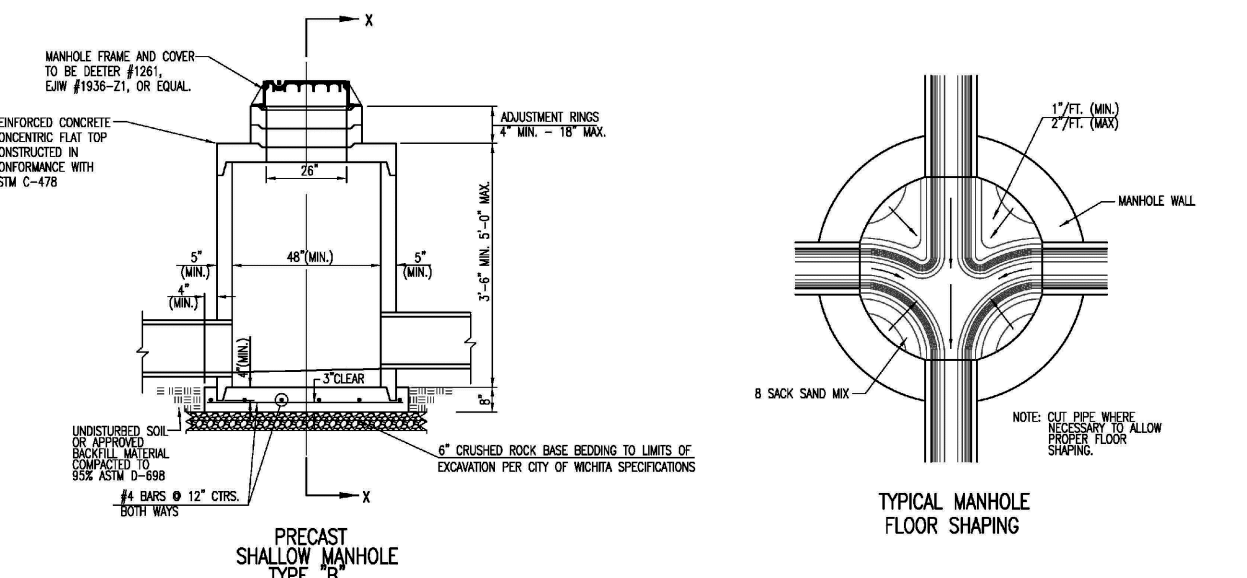
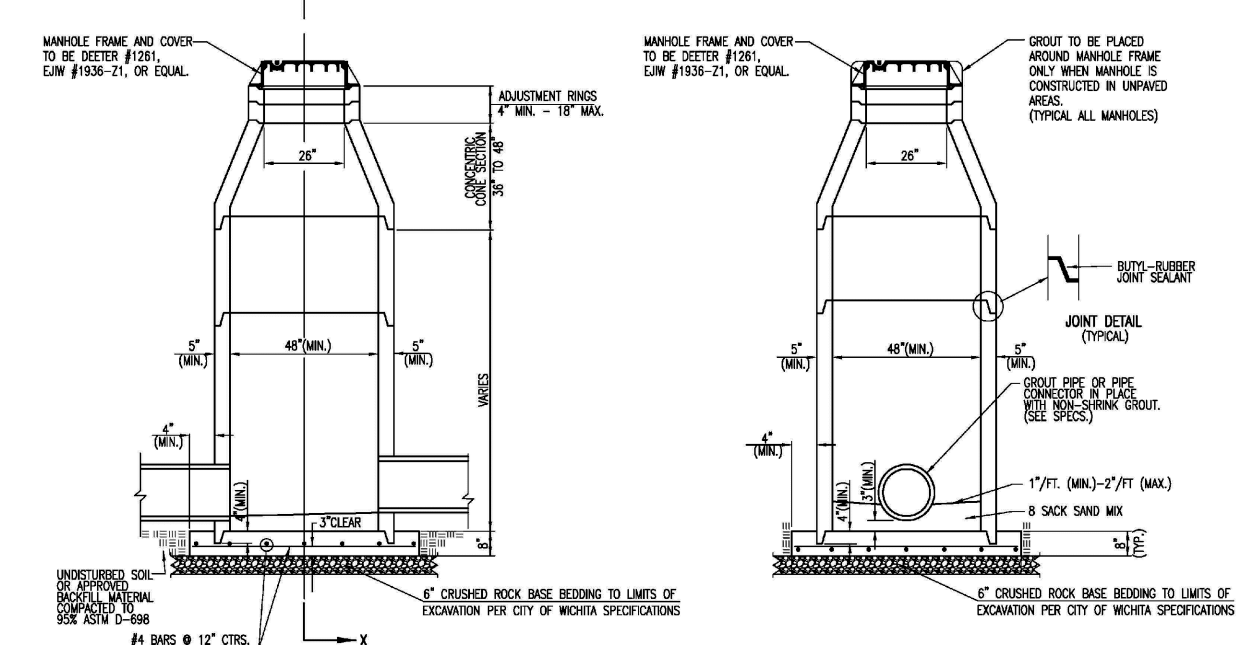
**KURTIS J. DANIELS**  
LICENSED PROFESSIONAL ENGINEER  
KANSAS  
E-26277

**STORM SEWER IMPROVEMENTS**  
**CLUB CARWASH**  
**WICHITA, KANSAS**

DATE:	DATE:
DESIGN BY:	APPROVED BY:
NTB	KJD
DATE:	DATE:
SEPT. 2020	
PROJ. SCALE:	1" = 20'
VERT. SCALE:	1" = 10'
PROJ. NO.:	2020-653 PPD
DWG. NO.:	2







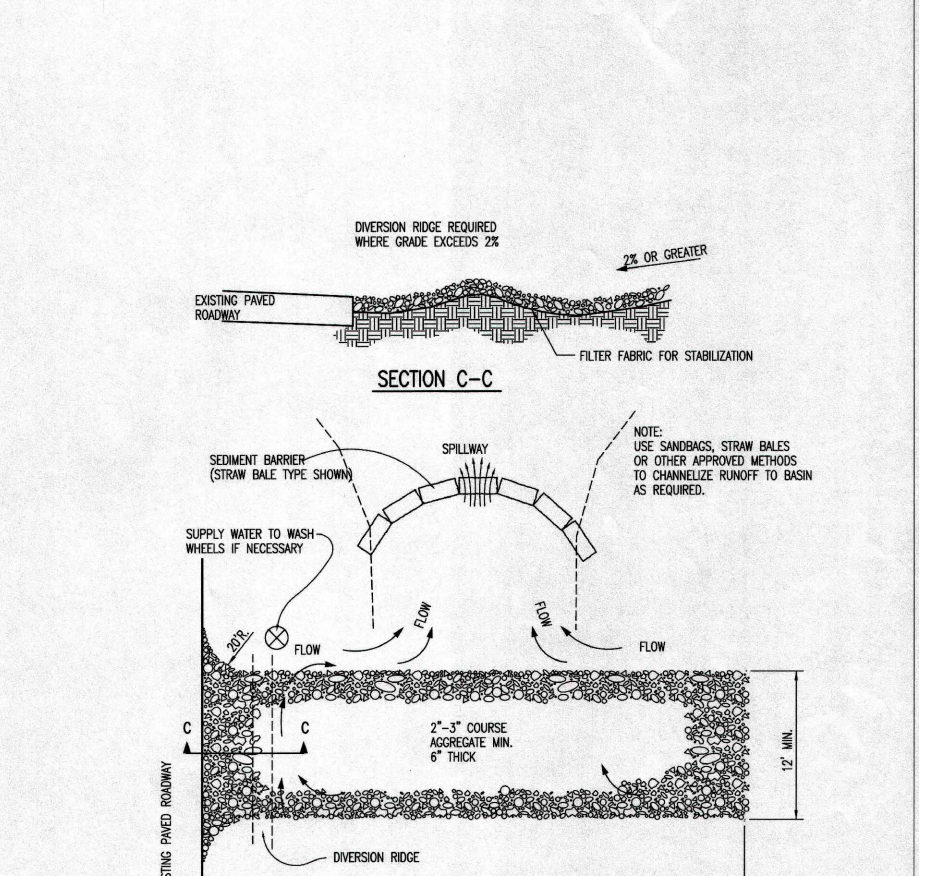
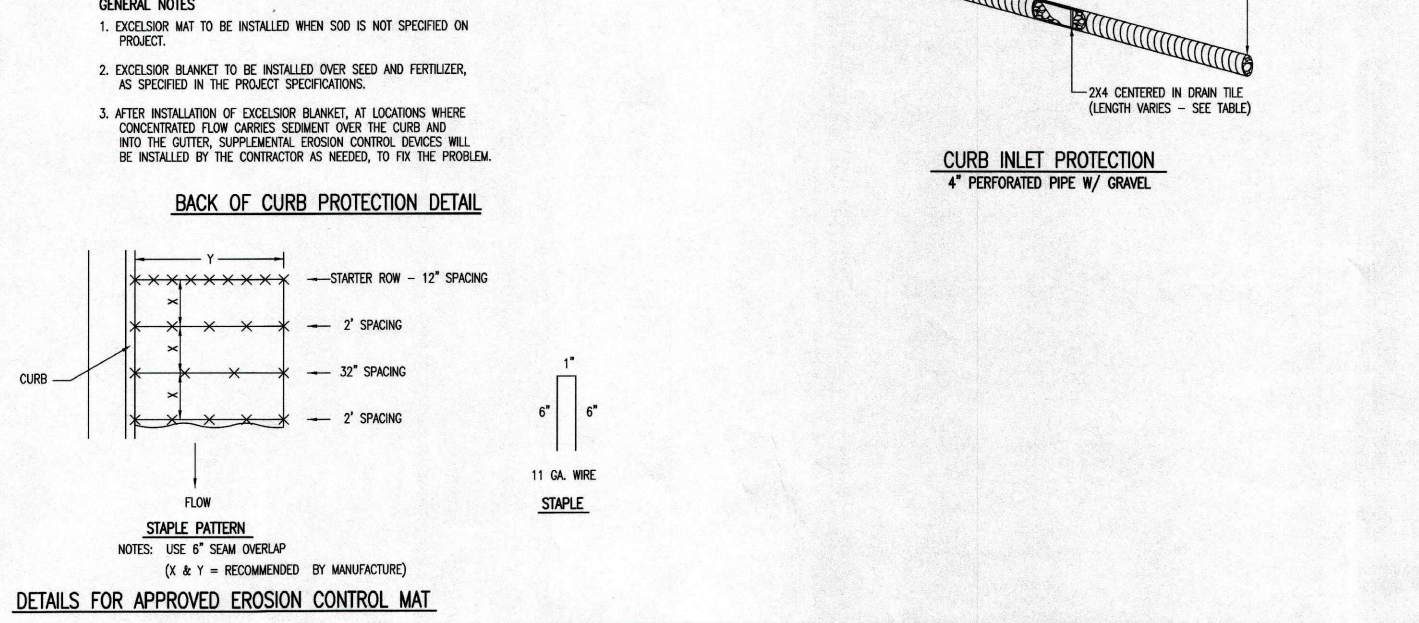
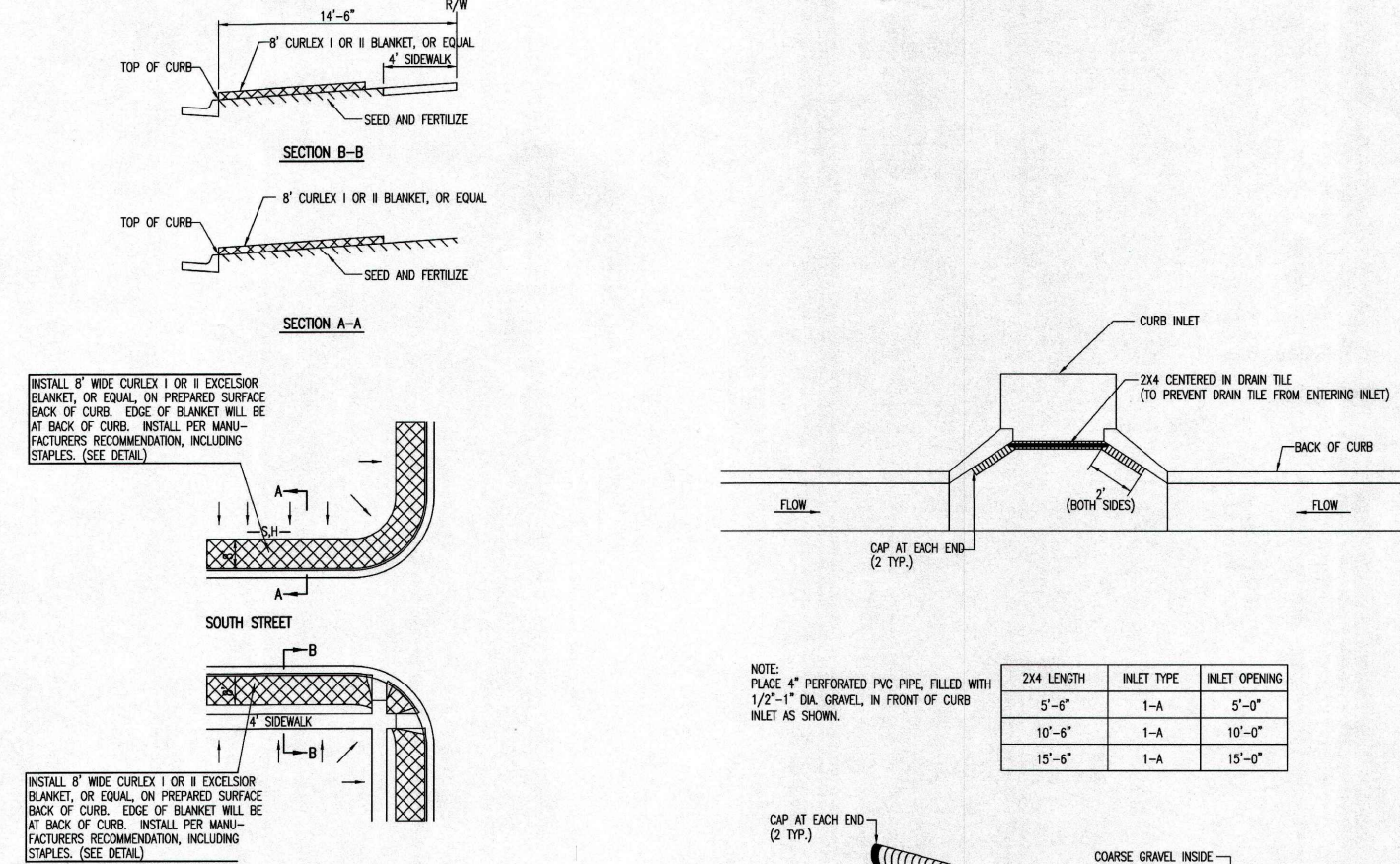
- GENERAL NOTES**
- IF AT THE DISCRETION OF THE ENGINEER, THE MANHOLE LANDING APPROX. VERTICAL. THE CONTRACTOR WILL HAVE THE OPTION TO FINISH MANHOLE AS STAIR OR RAMPING AS REQUIRED BY THE MANHOLE SIZE AS INDICATED BY THE SPECIFICATIONS.
  - SIZE, SCHEDULE AND WEIGHT SHALL BE AS SPECIFIED BY THE SPECIFICATIONS.
  - ALL MANHOLE CONSTRUCTION SHALL BE UNDER TIGHT.
  - TOP OF MANHOLE FLOOR SHALL BE AT LEAST 3 INCHES BELOW THE CURB LINE OF THE CURB TO PROVIDE SUFFICIENT MINIMUM THICKNESS OF MANHOLE.
  - ALL PRECAST MANHOLE SECTIONS SHALL CONFORM TO THE LATEST REVISIONS OF THE SPECIFICATIONS TO CITY OF WICHITA SPECIFICATIONS FOR CONCRETE TREATMENT AND AS INDICATED BY THE SPECIFICATIONS.
  - PRECAST MANHOLES SHALL BE SET AT LEAST 4 INCHES FROM MANHOLE SIDE.
  - MANHOLES WITH FEET SIZES 24" AND LARGER SHALL HAVE 2" TOP REBAR (MINIMUM).
  - MANHOLES WITH PRECAST RINGS MAY BE USED AT THE CONTRACTOR'S OPTION. THESE MANHOLES SHALL HAVE AN 8" MINIMUM RING THICKNESS AND SHALL BE CASTED IN ONE PIECE. COLORED ROCK SHALL BE USED FOR ALL MANHOLES. COLORED ROCK TO AT LEAST 3 FEET FROM THE MANHOLE WALL.
  - CONTRACTOR SHALL REMOVE UTILITY HOLES WITH NOTIFICATION. RECESSED MANHOLE WALLS SHALL BE COVERED UP TO THE MANHOLE WALL WITH FINISHED GRANULAR FILL. MULTIPLE UTILITY HOLES IN A PLACE, UTILITY HOLES SHALL BE MANHOLE WALL SHALL BE SET TO THE CENTER.
  - THE ENDS OF ALL PIPES IN MANHOLES SHALL BE CUT OFF FLUSH WITH THE INSIDE FACE OF THE MANHOLE WALL.
  - MANHOLE RINGS SHALL BE FINISHED WITH 2" TOP REBAR. CONCRETE TO COVER FLOOR CHANGES AND TO PROVIDE MINIMUM COVER OVER THE REBAR SHALL BE 4" MINIMUM. SELF-CLEANING BETWEEN ALL MANHOLE AND JOINT PIPES.
  - MANHOLE RINGS SHALL BE FINISHED WITH 2" TOP REBAR. CONCRETE TO COVER FLOOR CHANGES AND TO PROVIDE MINIMUM COVER OVER THE REBAR SHALL BE 4" MINIMUM. SELF-CLEANING BETWEEN ALL MANHOLE AND JOINT PIPES.
  - FOR EACH MANHOLE RING APPLICATION, SHALL BE GREATER THAN 1/2" MIN. FLOOR OR APPROVED EQUAL.
  - FOR SETTING GREAT APPLICATION, SHALL BE GREATER THAN 1/2" MIN. FLOOR OR APPROVED EQUAL.

**PRECAST CONCRETE MANHOLE (STORM SEWER)**

GARY JANZEN, P.E.

CITY ENGINEER'S OFFICE  
PUBLIC WORKS & UTILITIES  
ENGINEERING DIVISION

DATE: 11/20/20

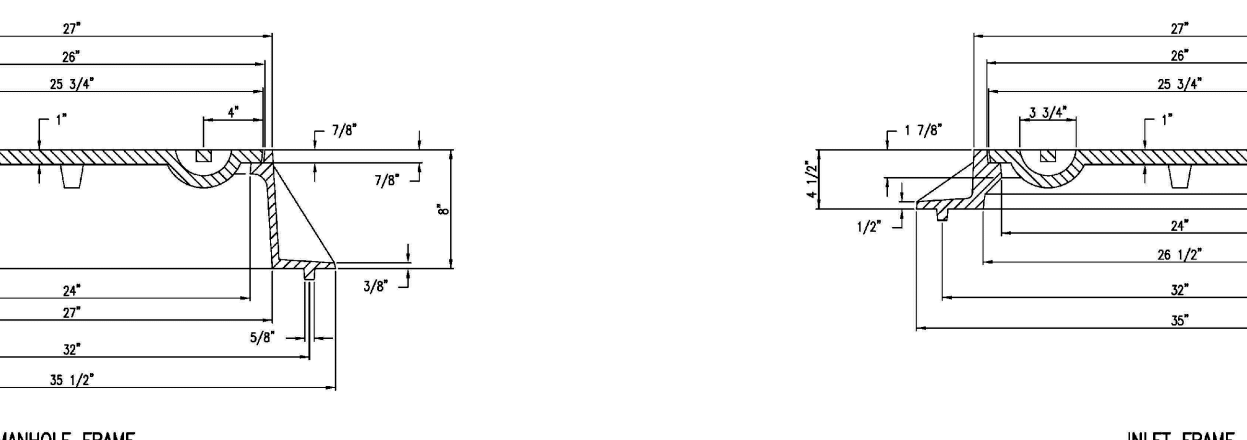
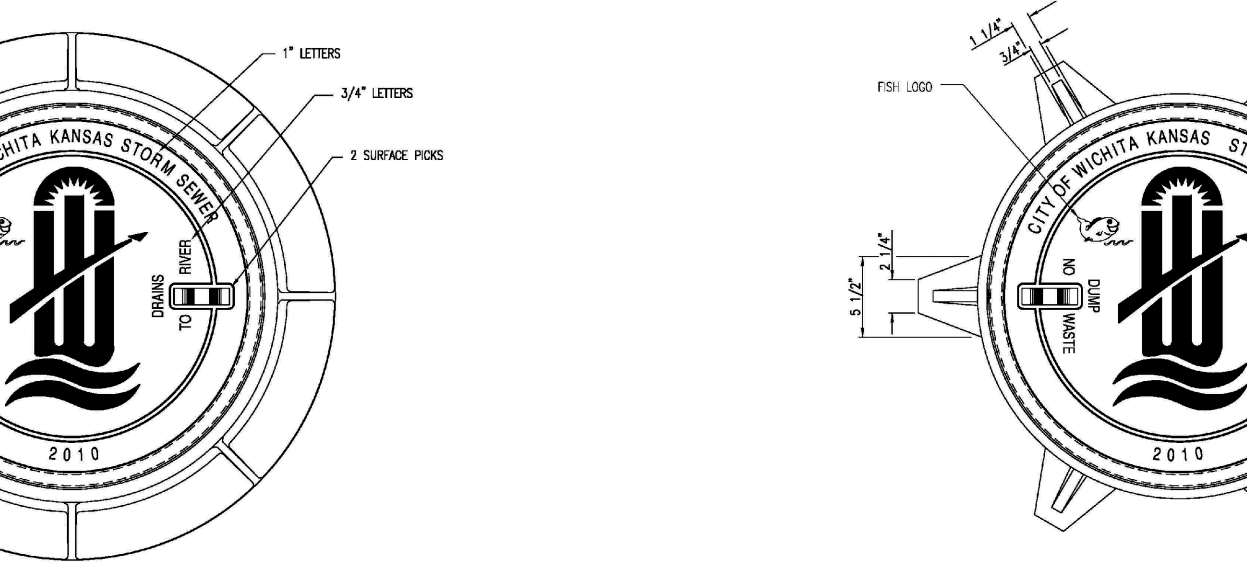


**BACK OF CURB PROTECTION, CURB INLET PROTECTION AND CONSTRUCTION ENTRANCE**

GARY JANZEN, P.E.

CITY ENGINEER'S OFFICE  
PUBLIC WORKS & UTILITIES  
ENGINEERING DIVISION

DATE: 11/20/20

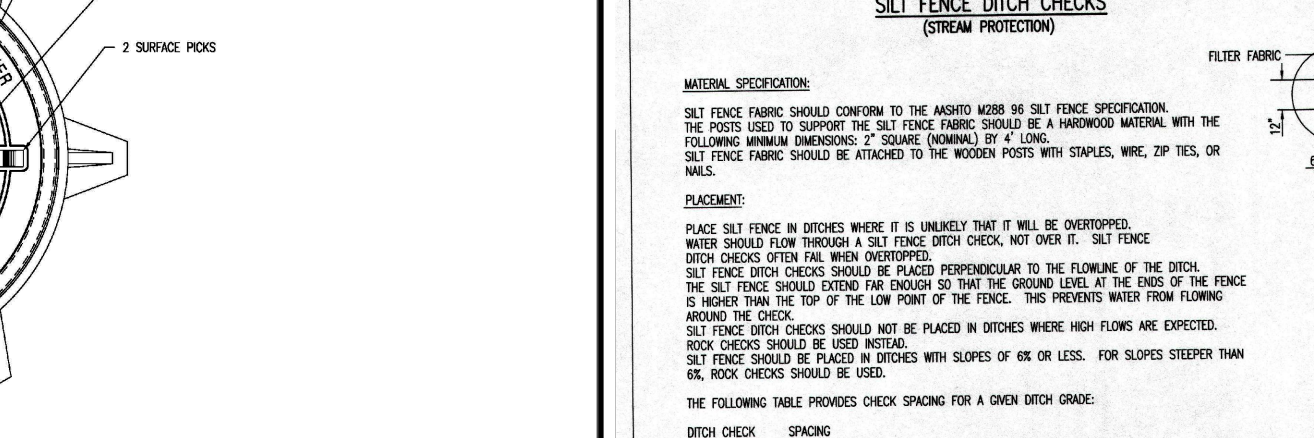
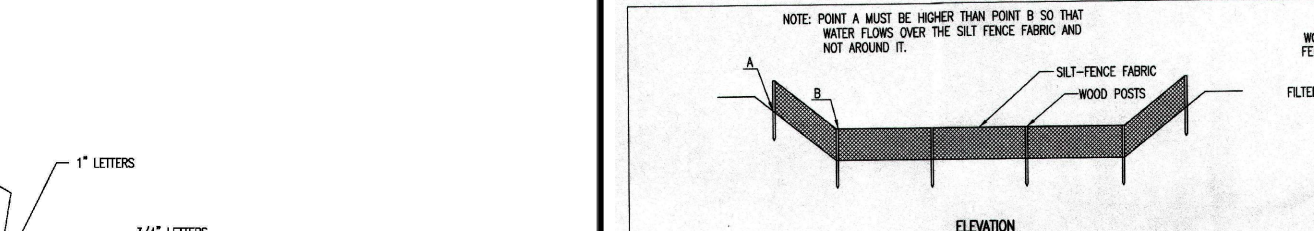


**MANHOLE/INLET FRAME AND COVER (STORM SEWER)**

GARY JANZEN, P.E.

CITY ENGINEER'S OFFICE  
PUBLIC WORKS & UTILITIES  
ENGINEERING DIVISION

DATE: 11/20/20

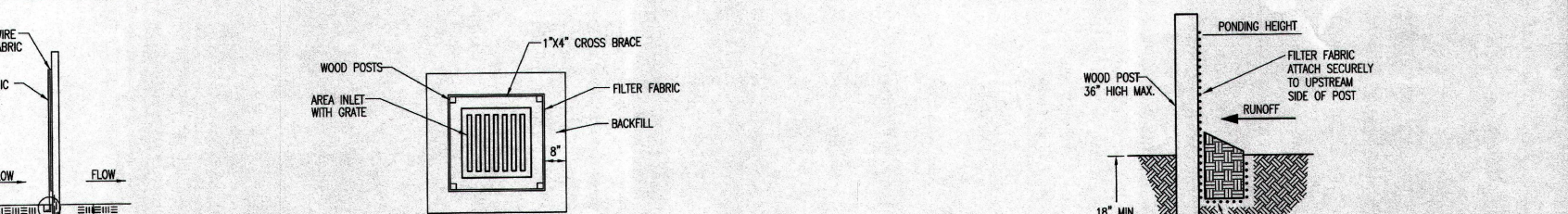


**SILT FENCE DITCH CHECKS AND SILT FENCE BARRIERS FOR AREA INLETS**

GARY JANZEN, P.E.

CITY ENGINEER'S OFFICE  
PUBLIC WORKS & UTILITIES  
ENGINEERING DIVISION

DATE: 11/20/20

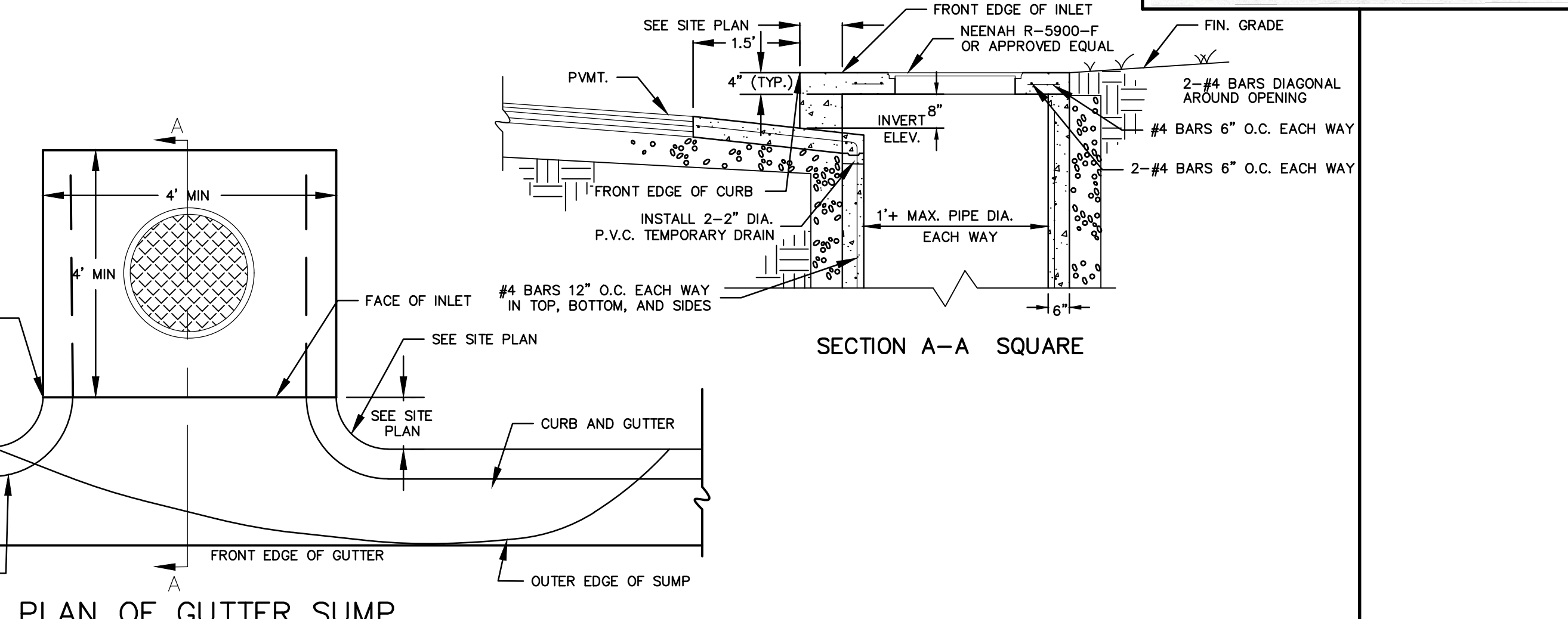


**STORM SEWER TRENCHING DETAIL**

GARY JANZEN, P.E.

CITY ENGINEER'S OFFICE  
PUBLIC WORKS & UTILITIES  
ENGINEERING DIVISION

DATE: 11/20/20

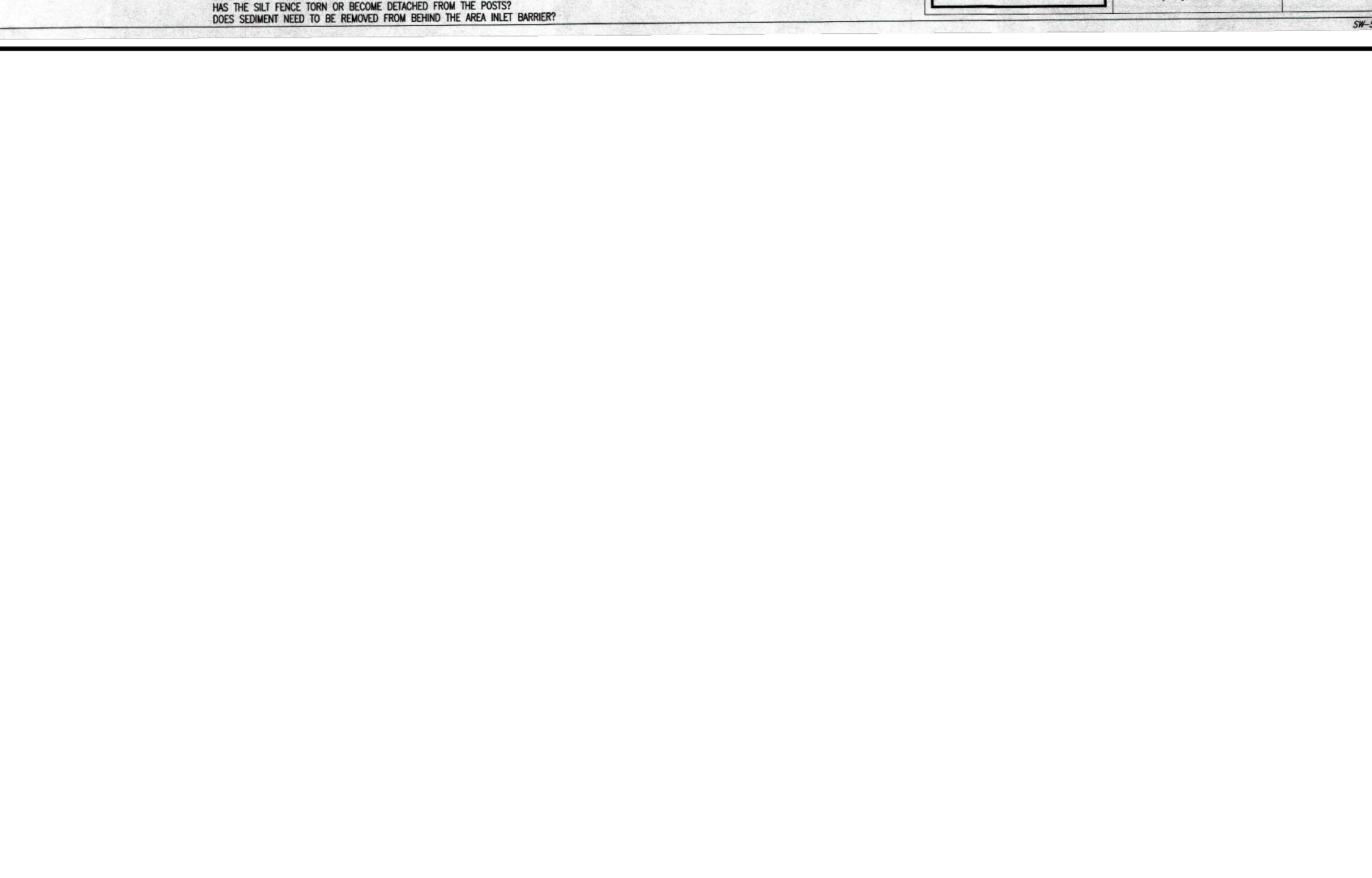


**TYPE "A" TOP CURB INLET DETAIL**

GARY JANZEN, P.E.

CITY ENGINEER'S OFFICE  
PUBLIC WORKS & UTILITIES  
ENGINEERING DIVISION

DATE: 11/20/20



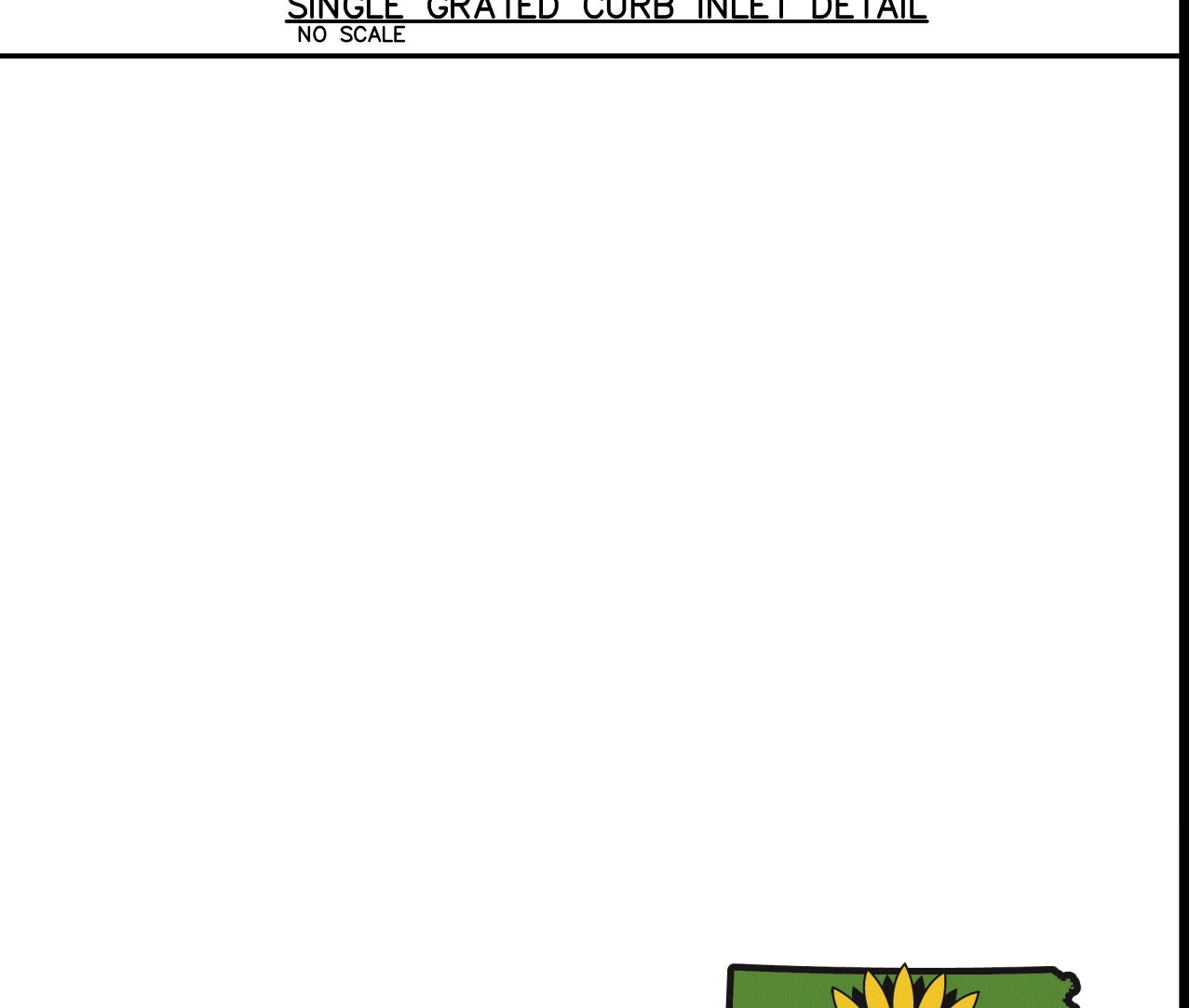
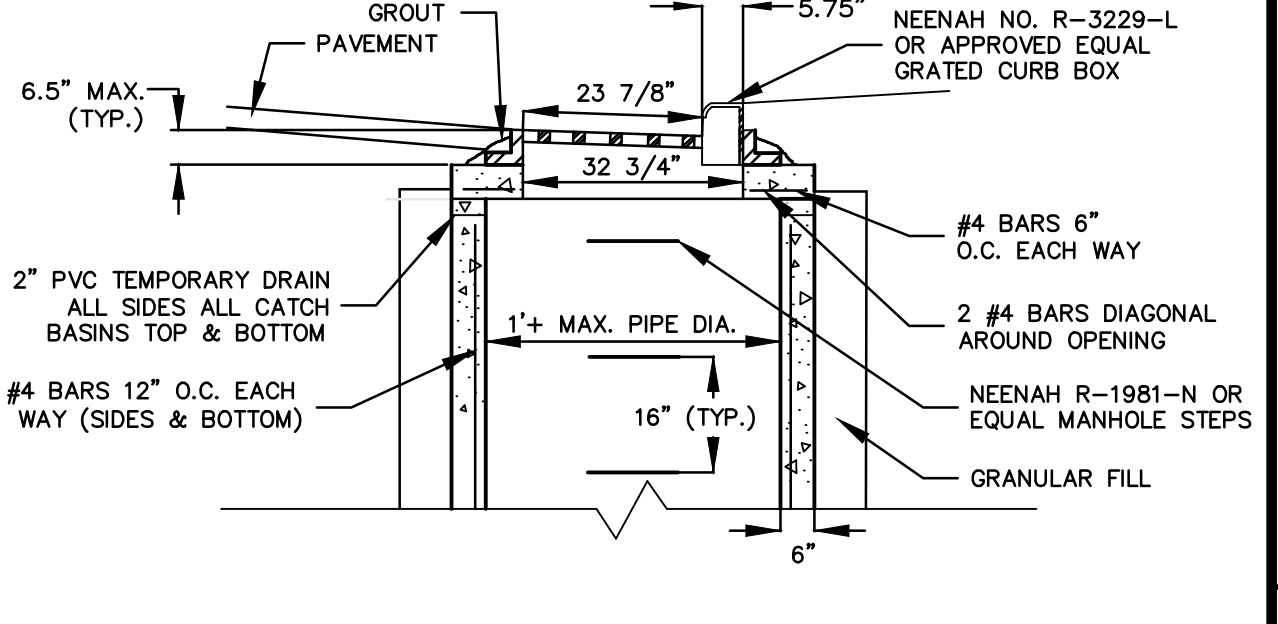
**SINGLE GRATED CURB INLET DETAIL**

GARY JANZEN, P.E.

CITY ENGINEER'S OFFICE  
PUBLIC WORKS & UTILITIES  
ENGINEERING DIVISION

DATE: 11/20/20

- ALL TRENCHES SHALL HAVE A BEDDING OF WELL GRADED, 1" MINUS, GRANULAR MATERIAL FROM 4" BELOW THE BOTTOM OF THE PIPE.
- IN AREAS TO BE PAVED OVER, ENTIRE TRENCH TO BE BACKFILLED WITH WELL GRADED GRANULAR MATERIAL & COMPACTED TO 95% OF THE STANDARD PROCTOR DENSITY.
- IN AREAS OF CLEAN DIRT CUTS OUTSIDE OF PAVED AREAS, TRENCH MAY BE BACKFILLED WITH SAME MATERIAL AND COMPACTED TO 95% OF THE STANDARD PROCTOR DENSITY.
- IN AREAS OF ROCK CUT, THE TRENCH SHALL BE BACKFILLED WITH WELL GRADED GRANULAR MATERIAL TO 6" ABOVE TOP OF PIPE.
- BACKFILL SHALL BE FOLLOWED OUT FOR PIPE JOINTS AND FITTINGS. PIPE JOINTS ARE UNSUPPORTED.
- INSTALLATION OF STORM SEWER TO MEET WITH MANUFACTURER SPECIFICATIONS.
- ALL STORM SEWER STRUCTURES TO MEET WITH THE JURISDICTIONAL SEWER SPECIFICATIONS.



**STORM SEWER IMPROVEMENTS CLUB CARWASH WICHITA, KANSAS**

**DETAILS / SPECIFIC / EROSION CONTROL**

OWNER: SCCI, LLC  
DEVELOPER: CLUB CARWASH OPERATING, LLC

DATE: SEPT. 2020  
SCALE: AS SHOWN  
PROJ. NO: 2020-653 PPD  
DWG. NO: 4

**Kansas 811**