

GENERAL NOTES:

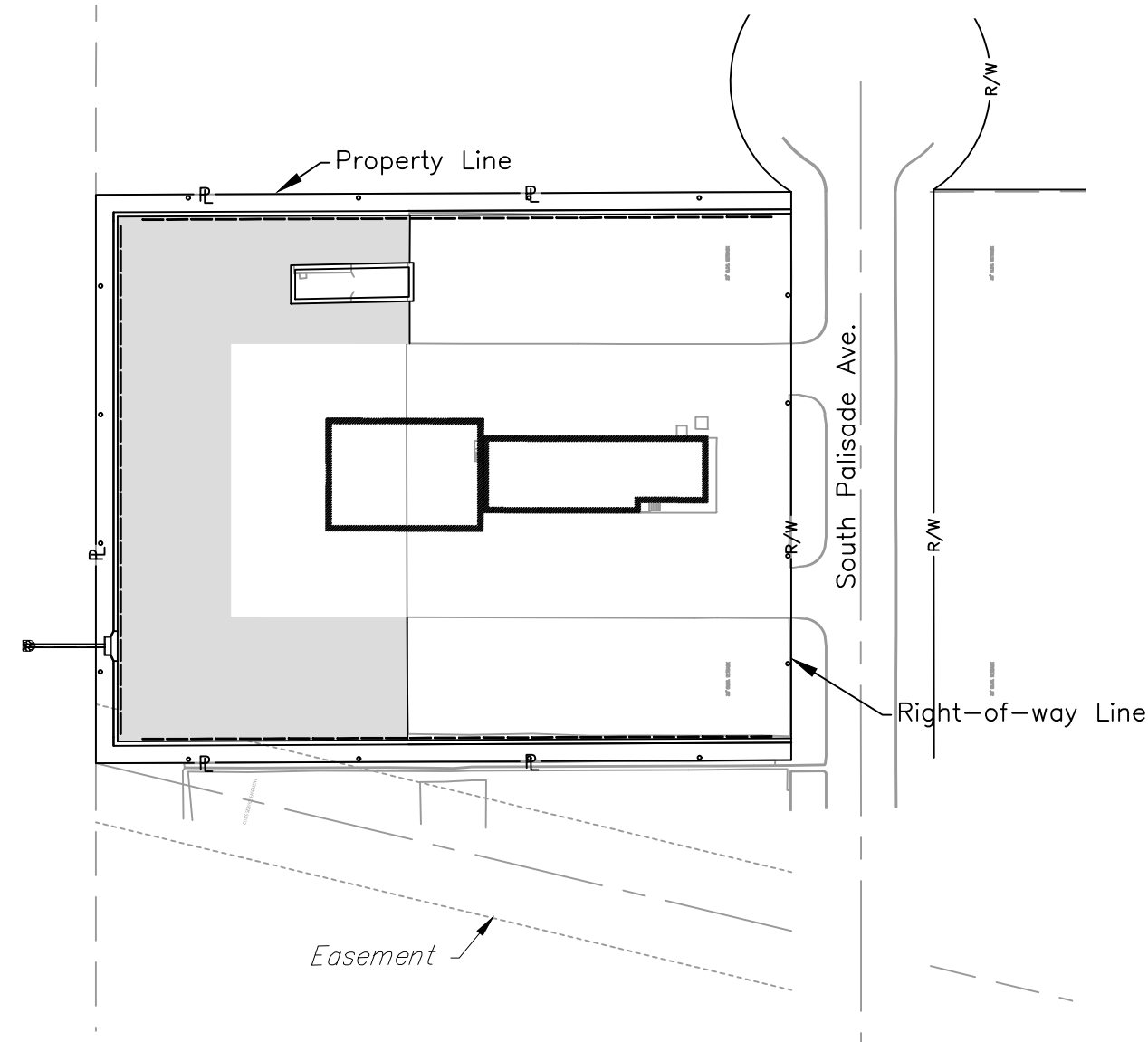
- The Contractor shall comply with all applicable safety regulations. All construction shall be completed following current City Standard Specifications and Special Provisions.
- Contractor will be required to provide notice to utility companies a minimum of seventy-two (72) hours prior to any excavation, as follows:
 Kansas One-Call 687-2470
 The Contractor must notify the following in case of an emergency:
 AT&T 1-800-246-8464
 Black Hills Energy 1-800-694-8989
 City of Wichita Water & Sewer 1-316-219-8921
 City of Wichita Stormwater 1-316-268-4090
 City of Wichita Traffic 1-316-268-4034
 Cox Communications 1-888-249-3530
 Kansas Gas Service 1-888-482-4950
 Evergy 1-800-544-4857
- Utility service lines, poles, etc. are to be adjusted as necessary by others prior to construction unless the plans specifically call for their adjustment by the Contractor or unless the plans specifically identify a utility to be adjusted by its owner during construction. Existing utilities and their location, as shown on the plans, represent the best information obtainable for design. The Contractor will be required to work around existing utilities within the right-of-way which do not conflict with proposed construction.
- Rubble from the removal of miscellaneous structures and excess excavation which is to be wasted shall be disposed of on sites to be provided by the Contractor. These sites shall be approved by the Engineer as to suitability, appearance and site location. Locations, in the opinion of the Engineer, that will leave an unsightly appearance will not be approved. All disposal sites must be approved by the Kansas Department of Health and Environment. Material either stockpiled or disposed of in a flood plain will require a Kansas State Board of Agriculture permit. Any material dumped in waters of the United States or wetlands is subject to U.S. Corps. of Engineers permitting regulations. Any material buried or stockpiled beyond approved construction limits will require additional archaeological investigations unless buried in a previously approved borrow location.
- Trees and shrubs in public right-of-way which are in direct conflict with proposed new construction shall be removed by the Contractor with the City Engineer's approval. Trees and shrubs which are not in direct conflict with proposed new construction shall be saved and protected from damage.
- The Contractor shall give all property owners and/or tenants of developed property abutting the construction of this project a minimum of ten (10) days notice prior to start of construction.
- The Contractor shall be responsible for preserving property irons. The Contractor will be required to re-establish any property irons which are damaged or destroyed by his construction operations. Such irons shall be re-established by a licensed land surveyor in accordance with state laws.
- The Engineering Division shall field locate water valves one time during construction when requested by the Contractor. It shall be the Contractor's responsibility to preserve such field locations during the construction process. Water valves, valve boxes or fire hydrants damaged during construction shall be repaired by Contractor at his own expense. Valve boxes and water meters within the project limits shall be adjusted to match final grades by the contractor.
- The Contractor shall notify the inspecting engineer and Dawnita Reinhardt at 316-268-4574 with the City of Wichita with the anticipated construction start date and notify them of project completion. Staking and inspection for this project will be the responsibility of the Contractor.
- If traffic will be impacted by construction, a traffic control plan must be submitted and approved by the City Traffic Engineer, Mike Armour at traffic@wichita.gov before construction can begin. The Contractor shall be responsible for all traffic control measures to facilitate construction. All construction zone markings and signage shall conform to the latest version of the Manual on Uniform Traffic Control Devices (MUTCD) as published by the US Dept. of Transportation, Federal Highway Administration. All costs associated with construction markings and signage shall be the Contractors responsibility.
- All elevations shown are NAVD 88.
- All areas disturbed during construction that will not be under proposed pavement shall be restored to match existing conditions.

- Any sidewalk, drive approach, or street pavement removed to construct project must have a pavement cut permit and be replaced by the City contractor. Permits can be obtained by calling 316-268-4501 or 316-268-4480.
- City maintenance of storm sewer ends at the last structure in the easement or right-of-way.
- A portion of excess excavated material shall be mounded around manholes which extend more than one (1) foot above the existing ground. Such mound shall be constructed with new development a six (6) foot diameter flat top with 4 to 1 side slopes down to the original ground. The elevation of the flat top of the mound shall be 0.4 foot below the top to the manhole.
- Geotechnical report available upon request.
- Contractor shall limit the extent of trench openings overnight and weekends to less than 50 feet.
- The inspecting firm shall submit to the City Stormwater Maintenance Division a digital copy of the CCTV inspection of the conduits and structures following construction. The digital file formation shall be compatible with the City input template. A copy of the template is available upon request at 316-268-4090.
- The Contractor shall protect from damage and support existing utilities through construction as approved by the utility owner and the Engineer at the contractors expense.

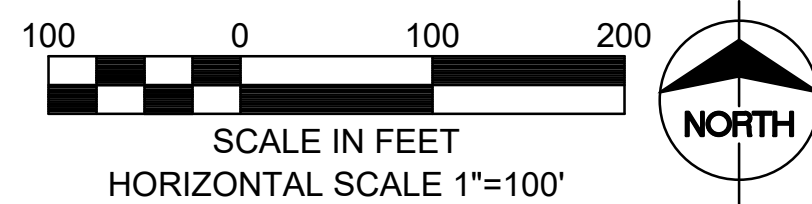
Benchmarks / Control Points
See Sheet C101

STORM SEWER IMPROVEMENTS to serve SAIA LTL FREIGHT 4525 SOUTH PALISADE AVE. CITY OF WICHITA, KANSAS

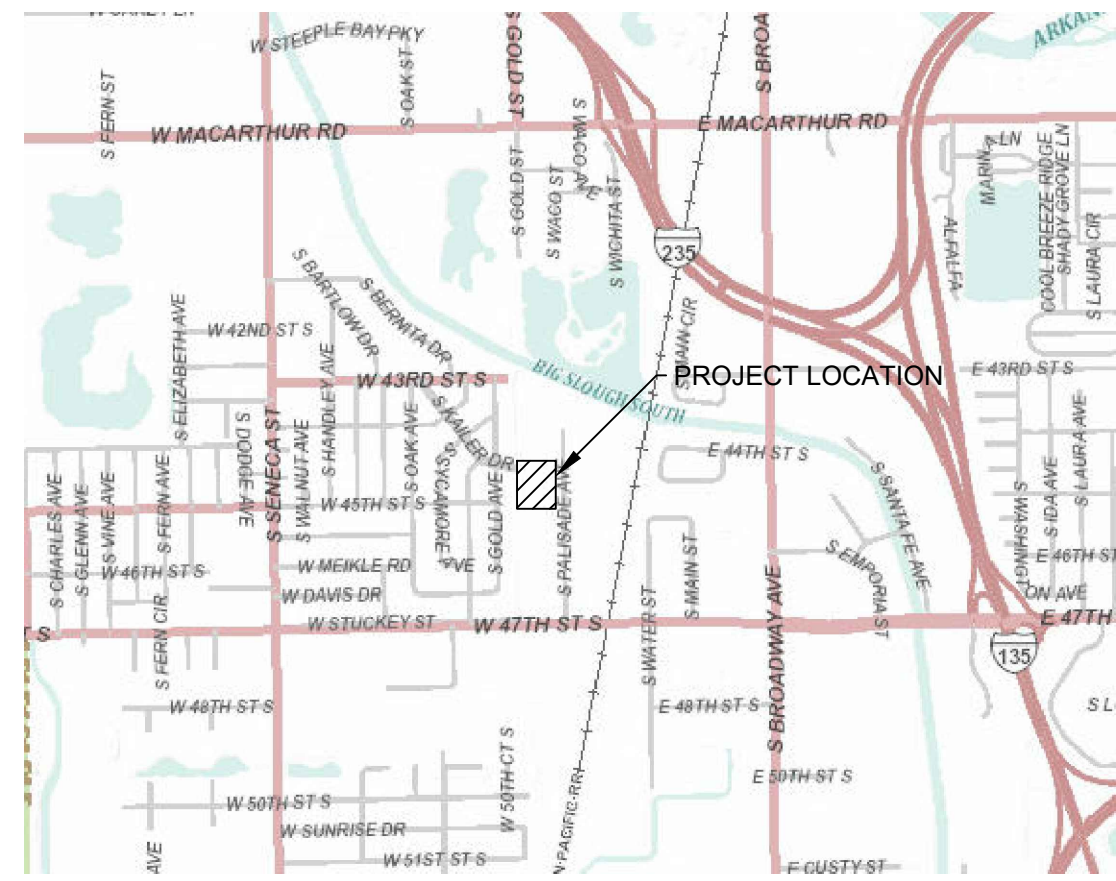
Project Number
2021-000724PPD



Project Location



SHEET INDEX	
Sheet Number	Sheet Title
C100	PPD COVER SHEET
C101	SITE SURVEY
C102	SITE DEMOLITION PLAN
C103	SITE LAYOUT PLAN
C104	SITE LAYOUT COORDINATE TABLES
C105	SITE GRADING PLAN
C106	STORM SEWER PROFILES
C107	DRAINAGE PLAN
C108	ERU PLAN SHEET
C109	MISCELLANEOUS DETAILS
C200	GENERAL NOTES SCHEDULES & DETAILS
C201	EROSION CONTROL PLAN PHASE 1
C202	EROSION CONTROL PLAN PHASE 2
C203	EROSION CONTROL PLAN PHASE 3



Vicinity Map

Stormwater Certification:
 New Development of Redevelopment (Circle One)
 Stormwater Permit # SWO2021-0040
 NOI Permit # S-AR94-176

These construction plans were prepared in accordance with the current Stormwater management Regulations as set forth in the City of Wichita's Stormwater Management Ordinance 16.32 and the policies/guidelines presented in the Wichita/Sedgwick County Stormwater Manual.

Site Area (Acres) = 3.0
 Disturbed Area (Acres) = 1.3
 Water Quality Treatment: OFFSITE BMP PROGRAM
 Downstream Channel Protection: NOT REQUIRED
 Detention: 10% RULE
 The BMP used for this development is SILT FENCING

NOTE:
THE TOTAL OVERALL DISTURBED SITE IS 1.3 ACRES AND THE WATERSHED IS GREATER THAN 50 ACRES, THEREFORE THIS SITE MEETS THE 10% RULE.

APPROVED AS NOTED
 BY WICHITA PUBLIC WORKS ENGINEERING
 AND STORMWATER DIVISION
 Engineering Ben Ferguson 02/18/22
 Stormwater Joseph Hickle 02/18/22

NOTE TO CONTRACTORS
 Inspection and testing for this project is to be provided by a Licensed Consulting Engineering Firm under contract with the Owner/Developer. Said inspection to be in accordance with the City of Wichita standard construction engineering practices and certified by a Licensed Professional Engineer in the state of Kansas. No work shall be performed the Contractor without such inspection nor shall any work be commenced without written authorization by City Engineering. All Construction and Materials shall comply with the current City of Wichita Specifications and Standards and Special Provisions. (on file and available at Wichita.gov).
 An approved copy of these plans signed by City staff are required on-site.

AS BUILT PLANS
 CONTRACTOR: APEX EXCAVATION
 SUPERINTENDENT: DAN HEDDIN
 FOREMAN: CLAUDIO T RUIZ
 CLIENT: CITY OF WICHITA
 INSPECTION FIRM: SCHWAB-EATON, PA.
 INSPECTOR: JIM DULING
 PDF BY: JFD 03-03-22

BUILT PER PLAN

GastingerWalker &

Architects | Interior Designers | Construction Managers
 817 Wyandotte Kansas City Missouri 64105 816.421.8200 gastingerwalker.com

CIVIL
 Taliaferro & Browne, Inc
 1020 East 8th St.
 Kansas City, MO 64106
 816.283.3456
STRUCTURAL
 Bob D. Campbell
 4338 Bellevue Ave.
 Kansas City, MO 64111
 816.531.4144
M/E/P
IMEG
 1600 Baltimore, Suite 300
 Kansas City, MO 64108
 761.842.8437

SAIA LTL Freight

Terminal Expansion and Remodel
 4525 South Palisade Ave.
 Wichita, KS 67217

SAIA LTL Freight
 11465 Johns Creek Parkway
 Johns Creek, GA 30097
 800.765.7242

ISSUED FOR:
 Review 19 January 2022

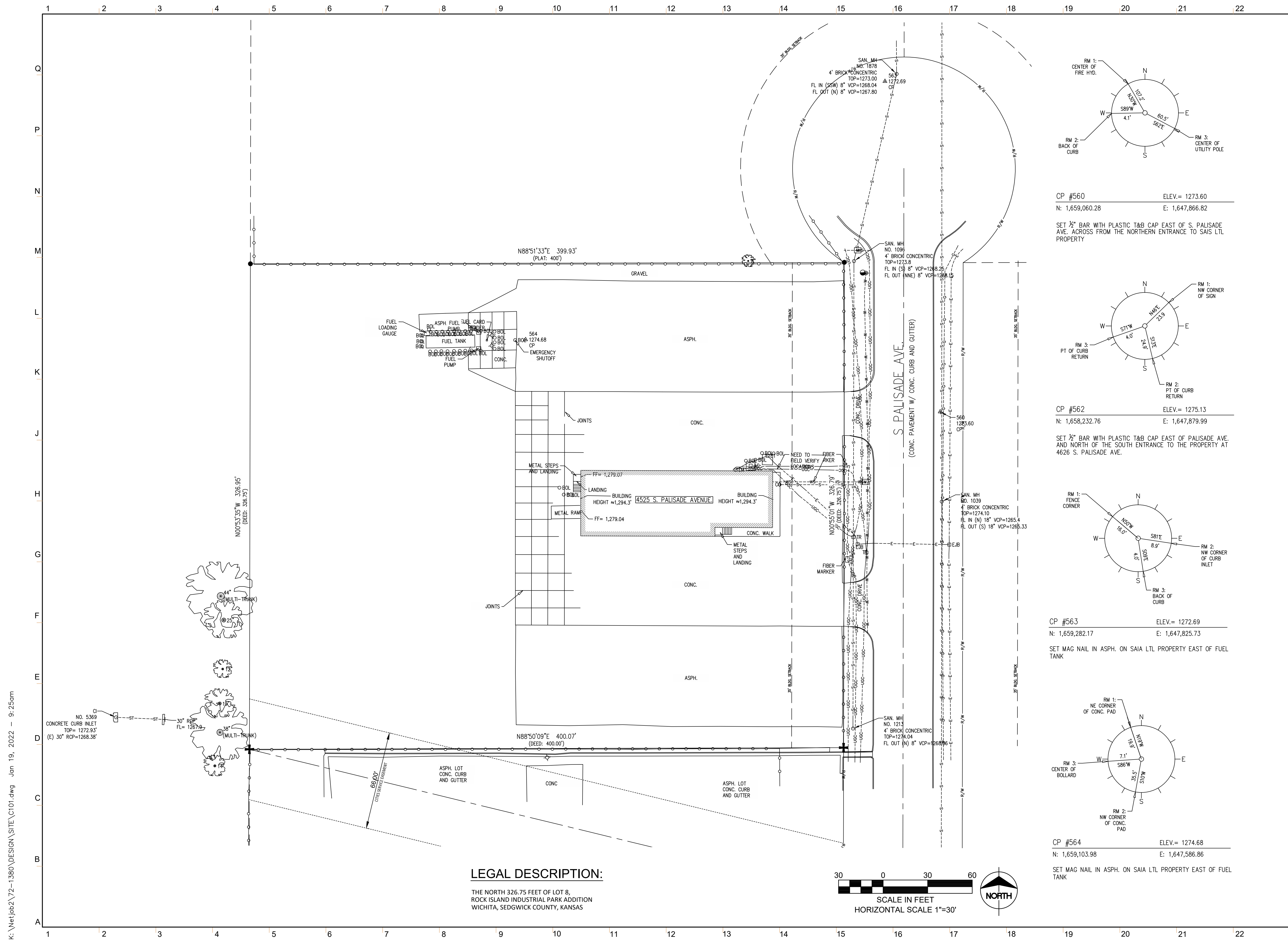
FINAL PLAN SET



Drawn By _____ TE/WB
 Checked By _____ MN/LJG

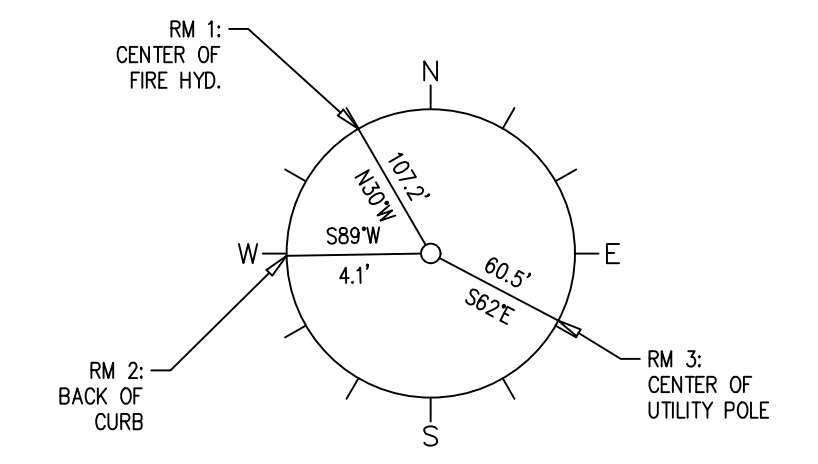
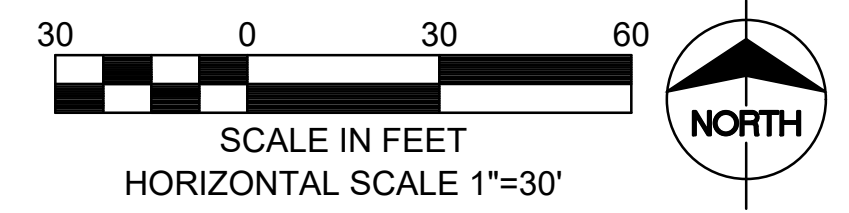
PPD COVER SHEET

C-100



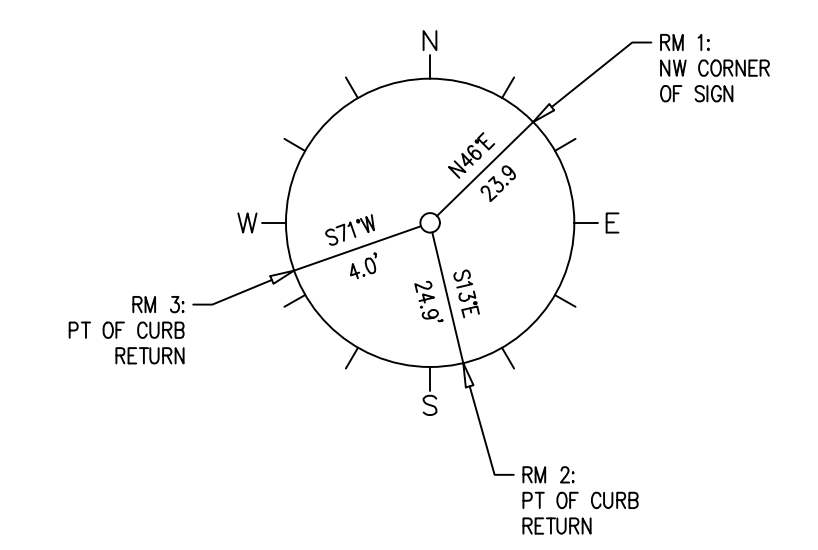
LEGAL DESCRIPTION:

THE NORTH 326.75 FEET OF LOT 8,
ROCK ISLAND INDUSTRIAL PARK ADDITION
WICHITA, SEDGWICK COUNTY, KANSAS



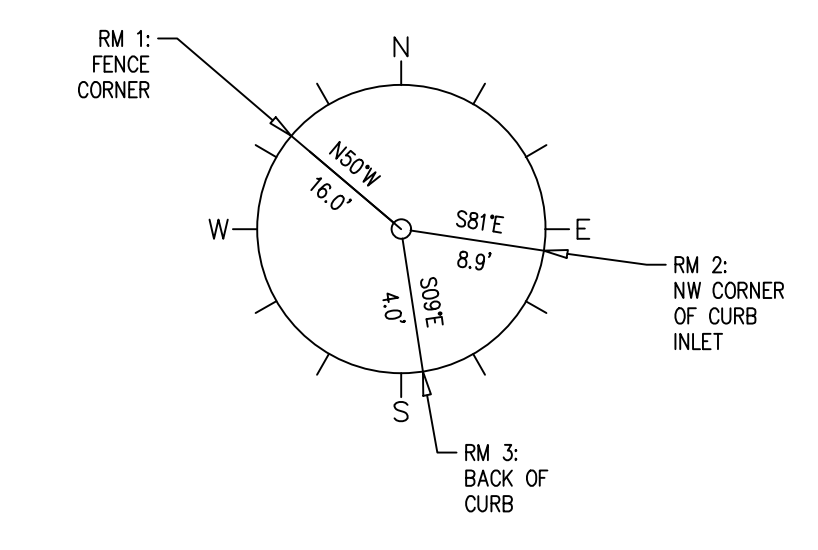
CP #560 ELEV.= 1273.60
N: 1,659,060.28 E: 1,647,866.82

SET 1/2" BAR WITH PLASTIC T&B CAP EAST OF S. PALISADE AVE. ACROSS FROM THE NORTHERN ENTRANCE TO SAIS LTL PROPERTY



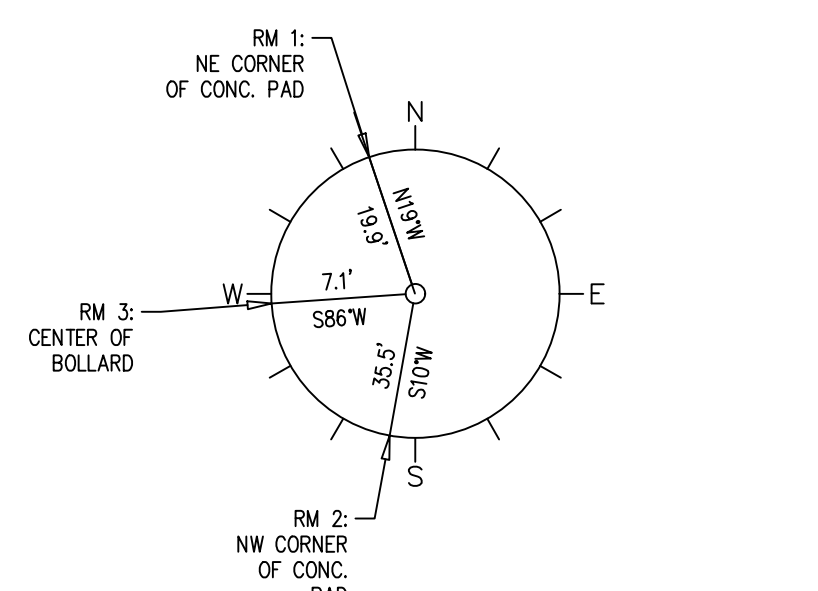
CP #562 ELEV.= 1275.13
N: 1,658,232.76 E: 1,647,879.99

SET 1/2" BAR WITH PLASTIC T&B CAP EAST OF PALISADE AVE. AND NORTH OF THE SOUTH ENTRANCE TO THE PROPERTY AT 4626 S. PALISADE AVE.



CP #563 ELEV.= 1272.69
N: 1,659,282.17 E: 1,647,825.73

SET MAG NAIL IN ASPH. ON SAIA LTL PROPERTY EAST OF FUEL TANK



CP #564 ELEV.= 1274.68
N: 1,659,103.98 E: 1,647,586.86

SET MAG NAIL IN ASPH. ON SAIA LTL PROPERTY EAST OF FUEL TANK

GastingerWalker &

Interior Designers | Construction Managers
817 Wyandotte Kansas City Missouri 64105 816.421.8200 gastingerwalker.com

CIVIL
Taliaferro & Browne, Inc
1020 East 8th St.
Kansas City, MO 64106
816.283.3456
STRUCTURAL
Bob D. Campbell
4338 Bellevue Ave.
Kansas City, MO 64111
816.531.4144
M/E/P
IMEG
1600 Baltimore, Suite 300
Kansas City, MO 64108
761.842.8437

SAIA LTL Freight

Terminal Expansion and Remodel
4525 South Palisade Ave.
Wichita, KS 67217

SAIA LTL Freight
11465 Johns Creek Parkway
Johns Creek, GA 30097
800.765.7242

ISSUED FOR:
Review 19 January 2022

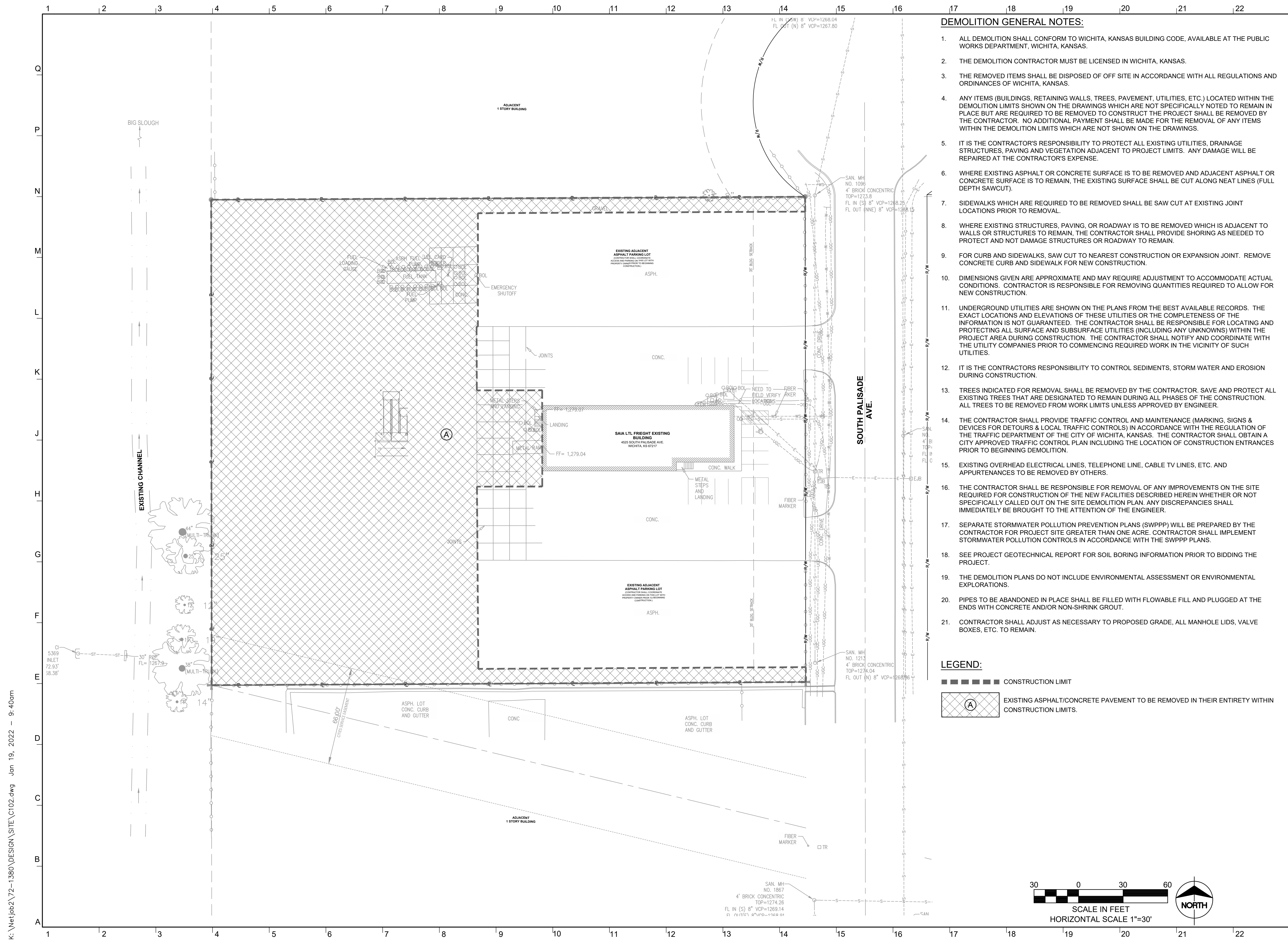
FINAL PLAN SET



Drawn By _____ TE/WB
Checked By _____ MN/LJG

SITE SURVEY

C-101

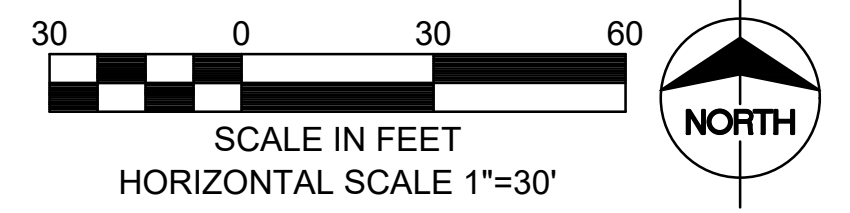


DEMOLITION GENERAL NOTES:

1. ALL DEMOLITION SHALL CONFORM TO WICHITA, KANSAS BUILDING CODE, AVAILABLE AT THE PUBLIC WORKS DEPARTMENT, WICHITA, KANSAS.
2. THE DEMOLITION CONTRACTOR MUST BE LICENSED IN WICHITA, KANSAS.
3. THE REMOVED ITEMS SHALL BE DISPOSED OF OFF SITE IN ACCORDANCE WITH ALL REGULATIONS AND ORDINANCES OF WICHITA, KANSAS.
4. ANY ITEMS (BUILDINGS, RETAINING WALLS, TREES, PAVEMENT, UTILITIES, ETC.) LOCATED WITHIN THE DEMOLITION LIMITS SHOWN ON THE DRAWINGS WHICH ARE NOT SPECIFICALLY NOTED TO REMAIN IN PLACE BUT ARE REQUIRED TO BE REMOVED TO CONSTRUCT THE PROJECT SHALL BE REMOVED BY THE CONTRACTOR. NO ADDITIONAL PAYMENT SHALL BE MADE FOR THE REMOVAL OF ANY ITEMS WITHIN THE DEMOLITION LIMITS WHICH ARE NOT SHOWN ON THE DRAWINGS.
5. IT IS THE CONTRACTOR'S RESPONSIBILITY TO PROTECT ALL EXISTING UTILITIES, DRAINAGE STRUCTURES, PAVING AND VEGETATION ADJACENT TO PROJECT LIMITS. ANY DAMAGE WILL BE REPAIRED AT THE CONTRACTOR'S EXPENSE.
6. WHERE EXISTING ASPHALT OR CONCRETE SURFACE IS TO BE REMOVED AND ADJACENT ASPHALT OR CONCRETE SURFACE IS TO REMAIN, THE EXISTING SURFACE SHALL BE CUT ALONG NEAT LINES (FULL DEPTH SAWCUT).
7. SIDEWALKS WHICH ARE REQUIRED TO BE REMOVED SHALL BE SAW CUT AT EXISTING JOINT LOCATIONS PRIOR TO REMOVAL.
8. WHERE EXISTING STRUCTURES, PAVING, OR ROADWAY IS TO BE REMOVED WHICH IS ADJACENT TO WALLS OR STRUCTURES TO REMAIN, THE CONTRACTOR SHALL PROVIDE SHORING AS NEEDED TO PROTECT AND NOT DAMAGE STRUCTURES OR ROADWAY TO REMAIN.
9. FOR CURB AND SIDEWALKS, SAW CUT TO NEAREST CONSTRUCTION OR EXPANSION JOINT. REMOVE CONCRETE CURB AND SIDEWALK FOR NEW CONSTRUCTION.
10. DIMENSIONS GIVEN ARE APPROXIMATE AND MAY REQUIRE ADJUSTMENT TO ACCOMMODATE ACTUAL CONDITIONS. CONTRACTOR IS RESPONSIBLE FOR REMOVING QUANTITIES REQUIRED TO ALLOW FOR NEW CONSTRUCTION.
11. UNDERGROUND UTILITIES ARE SHOWN ON THE PLANS FROM THE BEST AVAILABLE RECORDS. THE EXACT LOCATIONS AND ELEVATIONS OF THESE UTILITIES OR THE COMPLETENESS OF THE INFORMATION IS NOT GUARANTEED. THE CONTRACTOR SHALL BE RESPONSIBLE FOR LOCATING AND PROTECTING ALL SURFACE AND SUBSURFACE UTILITIES (INCLUDING ANY UNKNOWN) WITHIN THE PROJECT AREA DURING CONSTRUCTION. THE CONTRACTOR SHALL NOTIFY AND COORDINATE WITH THE UTILITY COMPANIES PRIOR TO COMMENCING REQUIRED WORK IN THE VICINITY OF SUCH UTILITIES.
12. IT IS THE CONTRACTOR'S RESPONSIBILITY TO CONTROL SEDIMENTS, STORM WATER AND EROSION DURING CONSTRUCTION.
13. TREES INDICATED FOR REMOVAL SHALL BE REMOVED BY THE CONTRACTOR. SAVE AND PROTECT ALL EXISTING TREES THAT ARE DESIGNATED TO REMAIN DURING ALL PHASES OF THE CONSTRUCTION. ALL TREES TO BE REMOVED FROM WORK LIMITS UNLESS APPROVED BY ENGINEER.
14. THE CONTRACTOR SHALL PROVIDE TRAFFIC CONTROL AND MAINTENANCE (MARKING, SIGNS & DEVICES FOR DETOURS & LOCAL TRAFFIC CONTROLS) IN ACCORDANCE WITH THE REGULATION OF THE TRAFFIC DEPARTMENT OF THE CITY OF WICHITA, KANSAS. THE CONTRACTOR SHALL OBTAIN A CITY APPROVED TRAFFIC CONTROL PLAN INCLUDING THE LOCATION OF CONSTRUCTION ENTRANCES PRIOR TO BEGINNING DEMOLITION.
15. EXISTING OVERHEAD ELECTRICAL LINES, TELEPHONE LINE, CABLE TV LINES, ETC. AND APPURTENANCES TO BE REMOVED BY OTHERS.
16. THE CONTRACTOR SHALL BE RESPONSIBLE FOR REMOVAL OF ANY IMPROVEMENTS ON THE SITE REQUIRED FOR CONSTRUCTION OF THE NEW FACILITIES DESCRIBED HEREIN WHETHER OR NOT SPECIFICALLY CALLED OUT ON THE SITE DEMOLITION PLAN. ANY DISCREPANCIES SHALL IMMEDIATELY BE BROUGHT TO THE ATTENTION OF THE ENGINEER.
17. SEPARATE STORMWATER POLLUTION PREVENTION PLANS (SWPPP) WILL BE PREPARED BY THE CONTRACTOR FOR PROJECT SITE GREATER THAN ONE ACRE. CONTRACTOR SHALL IMPLEMENT STORMWATER POLLUTION CONTROLS IN ACCORDANCE WITH THE SWPPP PLANS.
18. SEE PROJECT GEOTECHNICAL REPORT FOR SOIL BORING INFORMATION PRIOR TO BIDDING THE PROJECT.
19. THE DEMOLITION PLANS DO NOT INCLUDE ENVIRONMENTAL ASSESSMENT OR ENVIRONMENTAL EXPLORATIONS.
20. PIPES TO BE ABANDONED IN PLACE SHALL BE FILLED WITH FLOWABLE FILL AND PLUGGED AT THE ENDS WITH CONCRETE AND/OR NON-SHRINK GROUT.
21. CONTRACTOR SHALL ADJUST AS NECESSARY TO PROPOSED GRADE. ALL MANHOLE LIDS, VALVE BOXES, ETC. TO REMAIN.

LEGEND:

- CONSTRUCTION LIMIT
- ⊞ (A) EXISTING ASPHALT/CONCRETE PAVEMENT TO BE REMOVED IN THEIR ENTIRETY WITHIN CONSTRUCTION LIMITS.



GastingerWalker &

CIVIL
Taliaferro & Browne, Inc
1020 East 8th St.
Kansas City, MO 64106
816.283.3456

STRUCTURAL
Bob D. Campbell
4338 Bellevue Ave.
Kansas City, MO 64111
816.531.4144

M/E/P
IMEG
1600 Baltimore, Suite 300
Kansas City, MO 64108
761.842.8437

SAIA LTL Freight

Terminal Expansion and Remodel
4525 South Palisade Ave.
Wichita, KS 67217

SAIA LTL Freight
11465 Johns Creek Parkway
Johns Creek, GA 30097
800.765.7242

ISSUED FOR:
Review 19 January 2022

FINAL PLAN SET

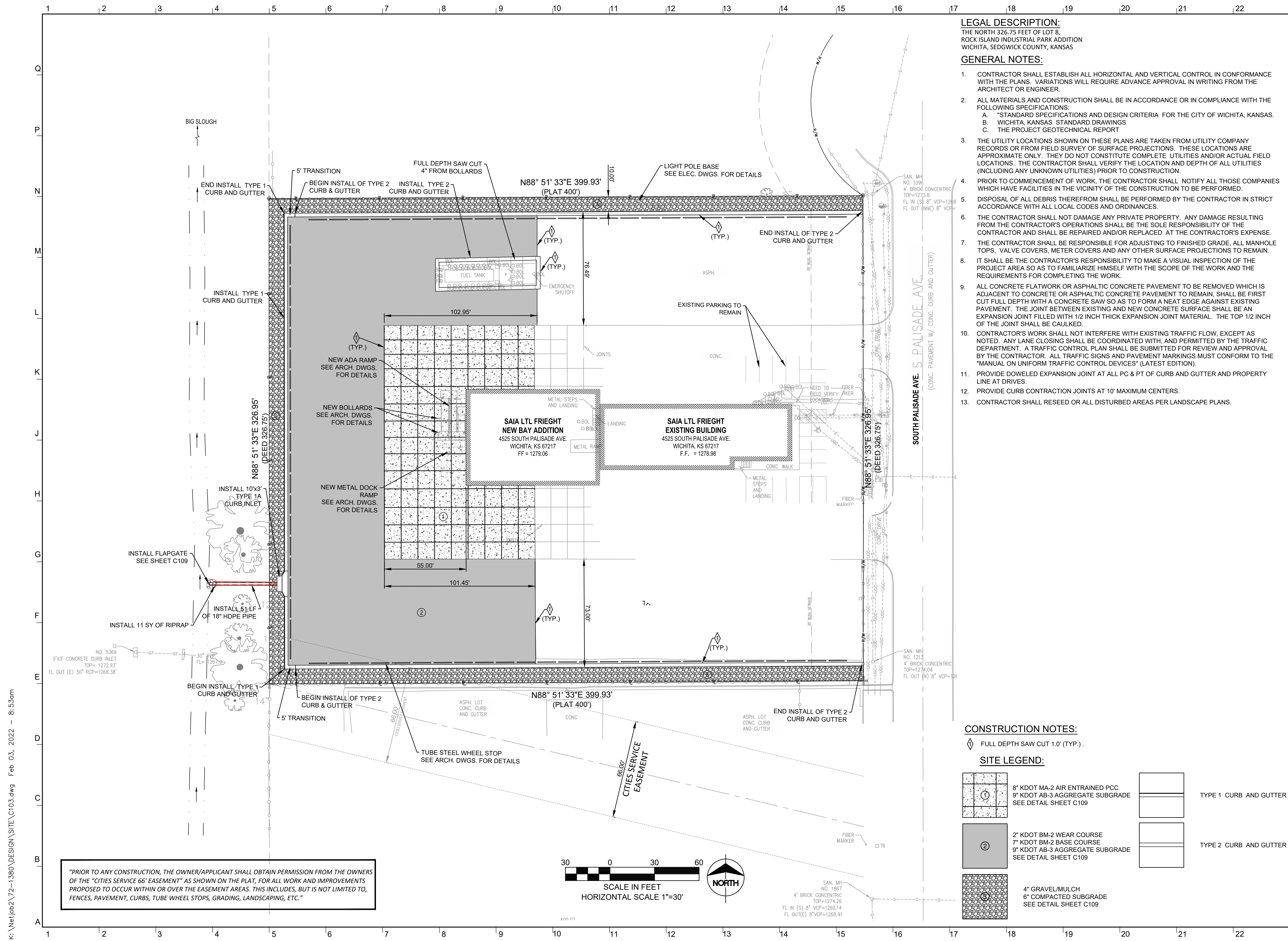


Drawn By _____ TE/WB
Checked By _____ MN/LJG

SITE DEMOLITION PLAN

C-102

k:\net\pbz\72-1380\DESIGN\SITE\C102.dwg Jan 19, 2022 - 9:40am



LEGAL DESCRIPTION:
 THE NORTH 326.75 FEET OF LOT 8,
 ROCK ISLAND INDUSTRIAL PARK ADDITION
 WICHITA, SEDGWICK COUNTY, KANSAS

GENERAL NOTES:

- CONTRACTOR SHALL ESTABLISH ALL HORIZONTAL AND VERTICAL CONTROL IN CONFORMANCE WITH THE PLANS. VARIATIONS WILL REQUIRE ADVANCE APPROVAL IN WRITING FROM THE ARCHITECT OR ENGINEER.
- ALL MATERIALS AND CONSTRUCTION SHALL BE IN ACCORDANCE OR IN COMPLIANCE WITH THE FOLLOWING SPECIFICATIONS:
 - *STANDARD SPECIFICATIONS AND DESIGN CRITERIA FOR THE CITY OF WICHITA, KANSAS.
 - WICHITA, KANSAS STANDARD DRAWINGS
 - THE PROJECT GEOTECHNICAL REPORT
- THE UTILITY LOCATIONS SHOWN ON THESE PLANS ARE TAKEN FROM UTILITY COMPANY RECORDS OR FROM FIELD SURVEY OF SURFACE PROJECTIONS. THESE LOCATIONS ARE APPROXIMATE ONLY. THEY DO NOT CONSTITUTE COMPLETE UTILITIES AND/OR ACTUAL FIELD LOCATIONS. THE CONTRACTOR SHALL VERIFY THE LOCATION AND DEPTH OF ALL UTILITIES (INCLUDING ANY UNKNOWN UTILITIES) PRIOR TO CONSTRUCTION.
- PRIOR TO COMMENCEMENT OF WORK, THE CONTRACTOR SHALL NOTIFY ALL THOSE COMPANIES WHICH HAVE FACILITIES IN THE VICINITY OF THE CONSTRUCTION TO BE PERFORMED.
- DISPOSAL OF ALL DEBRIS THEREFROM SHALL BE PERFORMED BY THE CONTRACTOR IN STRICT ACCORDANCE WITH ALL LOCAL CODES AND ORDINANCES.
- THE CONTRACTOR SHALL NOT DAMAGE ANY PRIVATE PROPERTY. ANY DAMAGE RESULTING FROM THE CONTRACTOR'S OPERATIONS SHALL BE THE SOLE RESPONSIBILITY OF THE CONTRACTOR AND SHALL BE REPAIRED AND/OR REPLACED AT THE CONTRACTOR'S EXPENSE.
- THE CONTRACTOR SHALL BE RESPONSIBLE FOR ADJUSTING TO FINISHED GRADE, ALL MANHOLE TOPS, VALVE COVERS, METER COVERS AND ANY OTHER SURFACE PROJECTIONS TO REMAIN.
- IT SHALL BE THE CONTRACTOR'S RESPONSIBILITY TO MAKE A VISUAL INSPECTION OF THE PROJECT AREA SO AS TO FAMILIARIZE HIMSELF WITH THE SCOPE OF THE WORK AND THE REQUIREMENTS FOR COMPLETING THE WORK.
- ALL CONCRETE FLATWORK OR ASPHALTIC CONCRETE PAVEMENT TO BE REMOVED WHICH IS ADJACENT TO CONCRETE OR ASPHALTIC CONCRETE PAVEMENT TO REMAIN, SHALL BE FIRST CUT FULL DEPTH WITH A CONCRETE SAW SO AS TO FORM A NEAT EDGE AGAINST EXISTING PAVEMENT. THE JOINT BETWEEN EXISTING AND NEW CONCRETE SURFACE SHALL BE AN EXPANSION JOINT FILLED WITH 1/2 INCH THICK EXPANSION JOINT MATERIAL. THE TOP 1/2 INCH OF THE JOINT SHALL BE CAULKED.
- CONTRACTOR'S WORK SHALL NOT INTERFERE WITH EXISTING TRAFFIC FLOW, EXCEPT AS NOTED. ANY LANE CLOSING SHALL BE COORDINATED WITH, AND PERMITTED BY THE TRAFFIC DEPARTMENT. A TRAFFIC CONTROL PLAN SHALL BE SUBMITTED FOR REVIEW AND APPROVAL BY THE CONTRACTOR. ALL TRAFFIC SIGNS AND PAVEMENT MARKINGS MUST CONFORM TO THE "MANUAL ON UNIFORM TRAFFIC CONTROL DEVICES" (LATEST EDITION).
- PROVIDE DOWELED EXPANSION JOINT AT ALL PC & PT OF CURB AND GUTTER AND PROPERTY LINE AT DRIVES.
- PROVIDE CURB CONTRACTION JOINTS AT 10' MAXIMUM CENTERS.
- CONTRACTOR SHALL RESEED OR ALL DISTURBED AREAS PER LANDSCAPE PLANS.

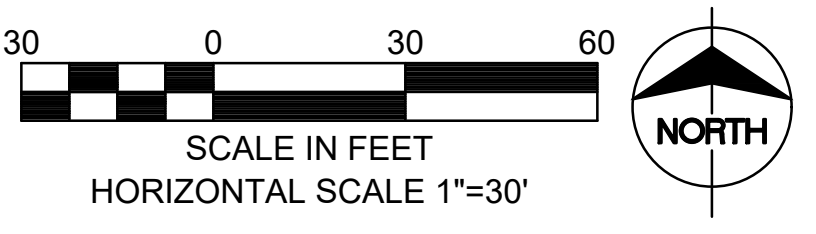
CONSTRUCTION NOTES:

◆ FULL DEPTH SAW CUT 1.0' (TYP.)

SITE LEGEND:

	8" KDOT MA-2 AIR ENTRAINED PCC 9" KDOT AB-3 AGGREGATE SUBGRADE SEE DETAIL SHEET C109		TYPE 1 CURB AND GUTTER
	2" KDOT BM-2 WEAR COURSE 7" KDOT BM-2 BASE COURSE 9" KDOT AB-3 AGGREGATE SUBGRADE SEE DETAIL SHEET C109		TYPE 2 CURB AND GUTTER
	4" GRAVEL/MULCH 6" COMPACTED SUBGRADE SEE DETAIL SHEET C109		

"PRIOR TO ANY CONSTRUCTION, THE OWNER/APPLICANT SHALL OBTAIN PERMISSION FROM THE OWNERS OF THE "CITIES SERVICE 66' EASEMENT" AS SHOWN ON THE PLAT, FOR ALL WORK AND IMPROVEMENTS PROPOSED TO OCCUR WITHIN OR OVER THE EASEMENT AREAS. THIS INCLUDES, BUT IS NOT LIMITED TO, FENCES, PAVEMENT, CURBS, TUBE WHEEL STOPS, GRADING, LANDSCAPING, ETC."



GastingerWalker &

CIVIL
 Taliaferro & Browne, Inc.
 1020 East 8th St.
 Kansas City, MO 64106
 816.283.3456

STRUCTURAL
 Bob D. Campbell
 4338 Bellevue Ave.
 Kansas City, MO 64111
 816.531.4144

M/E/P
 IMEG
 1600 Baltimore, Suite 300
 Kansas City, MO 64108
 761.842.8437

Interior Designers
 Construction Managers
 Architects
 817 Wyandotte Kansas City Missouri 64105 816.421.8200
 gastingerwalker.com

SAIA LTL Freight

Terminal Expansion and Remodel
 4525 South Palisade Ave.
 Wichita, KS 67217

SAIA LTL Freight
 11465 Johns Creek Parkway
 Johns Creek, GA 30097
 800.765.7242

ISSUED FOR:
 Review 19 January 2022

FINAL PLAN SET

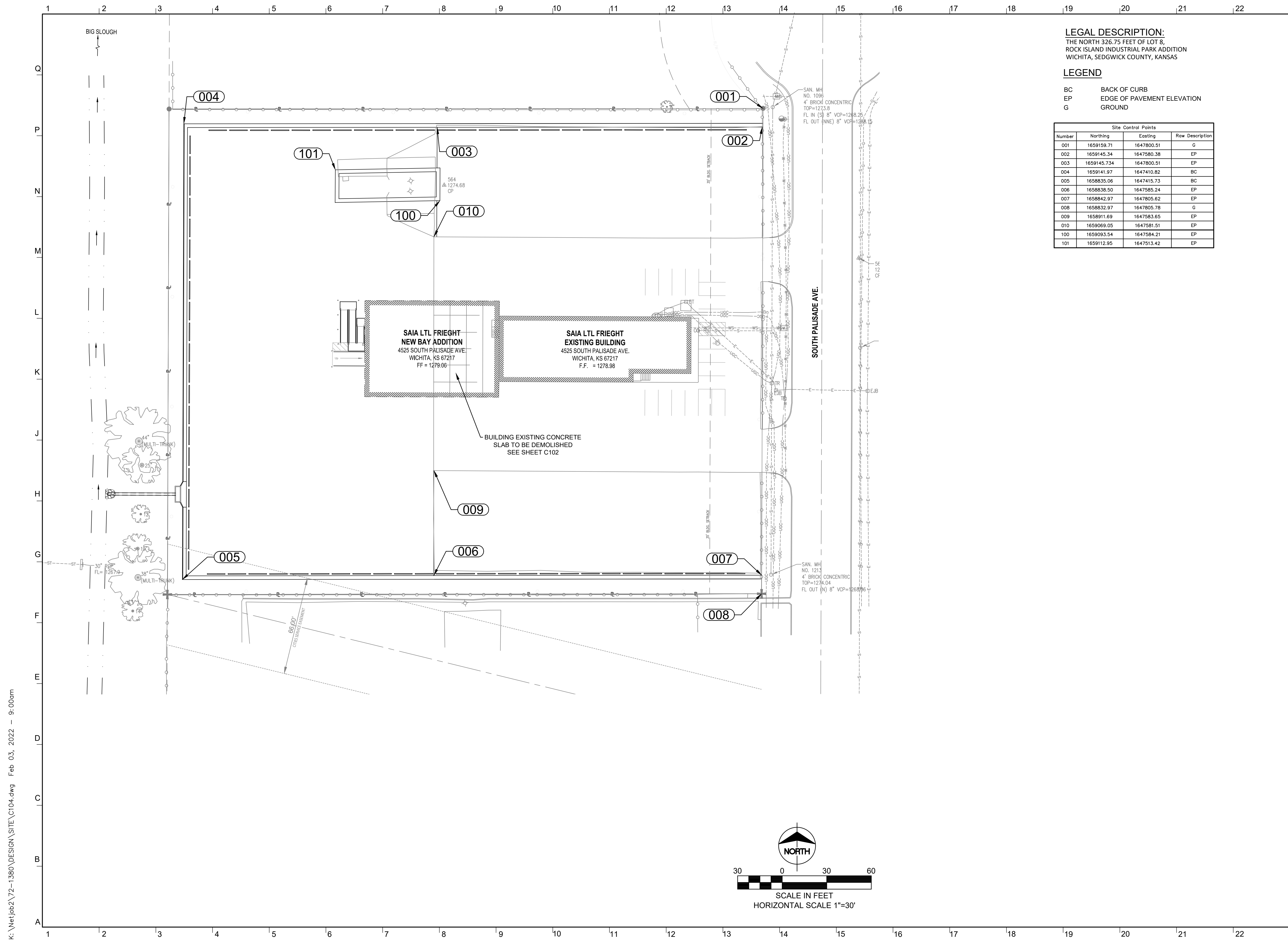


Drawn By _____ TE/WB
 Checked By _____ MN/LJG

SITE PLAN

C-103

k:\net\pb2\72-1380\DESIGN\SITE\C103.dwg Feb 03, 2022 - 8:53am



LEGAL DESCRIPTION:
 THE NORTH 326.75 FEET OF LOT 8,
 ROCK ISLAND INDUSTRIAL PARK ADDITION
 WICHITA, SEDGWICK COUNTY, KANSAS

LEGEND

- BC BACK OF CURB
- EP EDGE OF PAVEMENT ELEVATION
- G GROUND

Site Control Points			
Number	Northing	Easting	Raw Description
001	1659159.71	1647800.51	G
002	1659145.34	1647580.38	EP
003	1659145.734	1647800.51	EP
004	1659141.97	1647410.82	BC
005	1658835.06	1647415.73	BC
006	1658838.50	1647585.24	EP
007	1658842.97	1647805.62	EP
008	1658832.97	1647805.78	G
009	1658911.69	1647583.65	EP
010	1659069.05	1647581.51	EP
100	1659093.54	1647584.21	EP
101	1659112.95	1647513.42	EP

GastingerWalker &
 Architects | Interior Designers | Construction Managers
 817 Wyandotte Kansas City Missouri 64105 816.421.8200 gastingerwalker.com

CIVIL
 Taliaferro & Browne, Inc
 1020 East 8th St.
 Kansas City, MO 64106
 816.283.3456
 STRUCTURAL
 Bob D. Campbell
 4338 Bellevue Ave.
 Kansas City, MO 64111
 816.531.4144
 M/E/P
 IMEG
 1600 Baltimore, Suite 300
 Kansas City, MO 64108
 761.842.8437

SAIA LTL Freight

Terminal Expansion and Remodel
 4525 South Palisade Ave.
 Wichita, KS 67217

SAIA LTL Freight
 11465 Johns Creek Parkway
 Johns Creek, GA 30097
 800.765.7242

ISSUED FOR:

Review 19 January 2022

FINAL PLAN SET

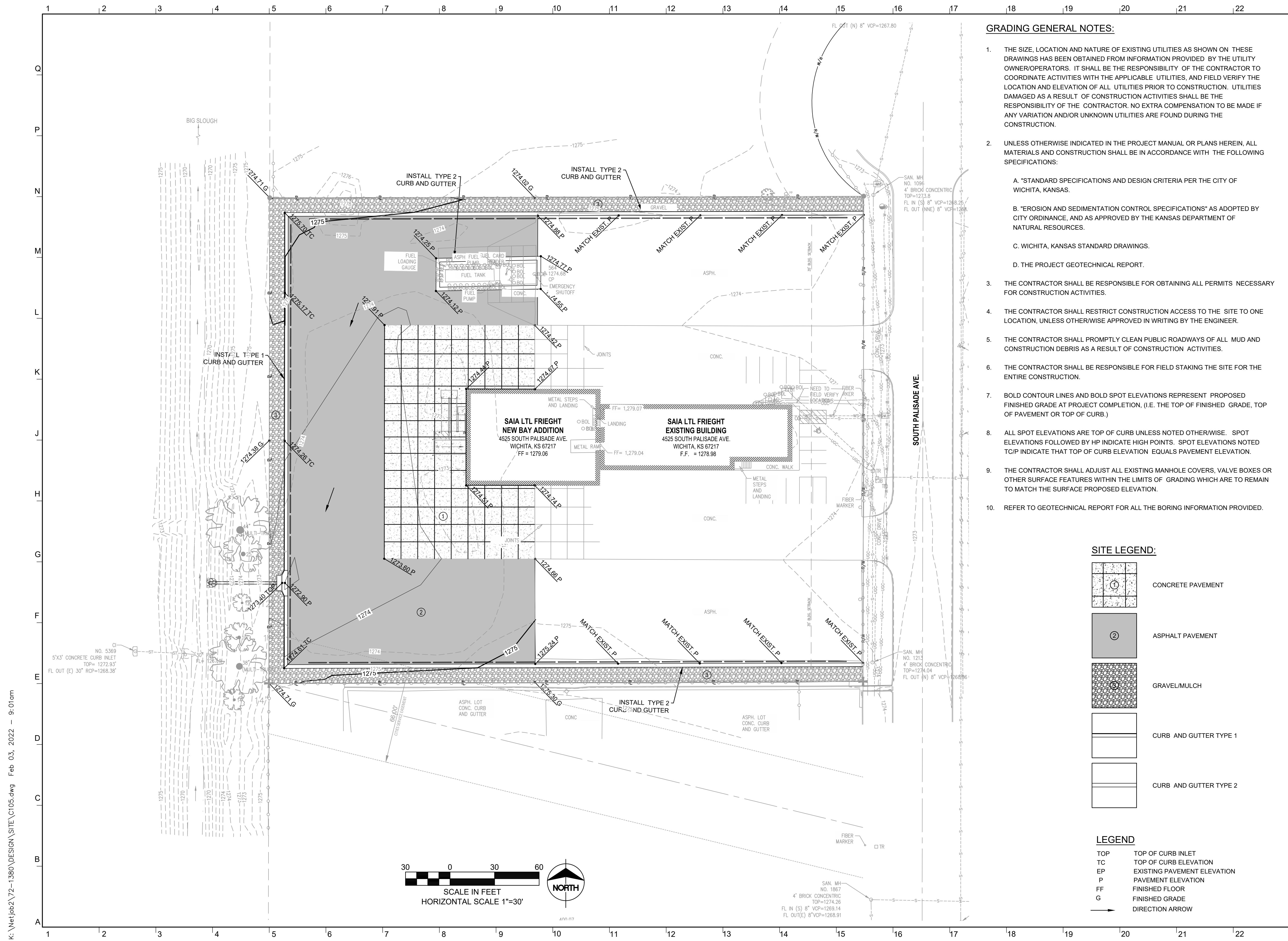


Drawn By _____ TE/WB
 Checked By _____ MN/LJG

SITE LAYOUT COORDINATE TABLES

C-104

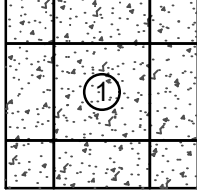
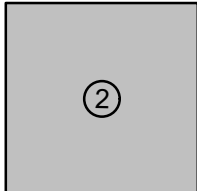
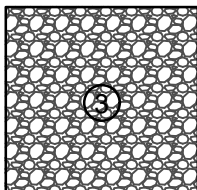

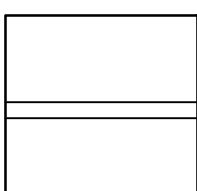
K:\Net\job2\72-1380\DESIGN\SITE\C104.dwg Feb 03, 2022 - 9:00am



GRADING GENERAL NOTES:

- THE SIZE, LOCATION AND NATURE OF EXISTING UTILITIES AS SHOWN ON THESE DRAWINGS HAS BEEN OBTAINED FROM INFORMATION PROVIDED BY THE UTILITY OWNER/OPERATORS. IT SHALL BE THE RESPONSIBILITY OF THE CONTRACTOR TO COORDINATE ACTIVITIES WITH THE APPLICABLE UTILITIES, AND FIELD VERIFY THE LOCATION AND ELEVATION OF ALL UTILITIES PRIOR TO CONSTRUCTION. UTILITIES DAMAGED AS A RESULT OF CONSTRUCTION ACTIVITIES SHALL BE THE RESPONSIBILITY OF THE CONTRACTOR. NO EXTRA COMPENSATION TO BE MADE IF ANY VARIATION AND/OR UNKNOWN UTILITIES ARE FOUND DURING THE CONSTRUCTION.
- UNLESS OTHERWISE INDICATED IN THE PROJECT MANUAL OR PLANS HEREIN, ALL MATERIALS AND CONSTRUCTION SHALL BE IN ACCORDANCE WITH THE FOLLOWING SPECIFICATIONS:
 - "STANDARD SPECIFICATIONS AND DESIGN CRITERIA PER THE CITY OF WICHITA, KANSAS.
 - "EROSION AND SEDIMENTATION CONTROL SPECIFICATIONS" AS ADOPTED BY CITY ORDINANCE, AND AS APPROVED BY THE KANSAS DEPARTMENT OF NATURAL RESOURCES.
 - WICHITA, KANSAS STANDARD DRAWINGS.
 - THE PROJECT GEOTECHNICAL REPORT.
- THE CONTRACTOR SHALL BE RESPONSIBLE FOR OBTAINING ALL PERMITS NECESSARY FOR CONSTRUCTION ACTIVITIES.
- THE CONTRACTOR SHALL RESTRICT CONSTRUCTION ACCESS TO THE SITE TO ONE LOCATION, UNLESS OTHERWISE APPROVED IN WRITING BY THE ENGINEER.
- THE CONTRACTOR SHALL PROMPTLY CLEAN PUBLIC ROADWAYS OF ALL MUD AND CONSTRUCTION DEBRIS AS A RESULT OF CONSTRUCTION ACTIVITIES.
- THE CONTRACTOR SHALL BE RESPONSIBLE FOR FIELD STAKING THE SITE FOR THE ENTIRE CONSTRUCTION.
- BOLD CONTOUR LINES AND BOLD SPOT ELEVATIONS REPRESENT PROPOSED FINISHED GRADE AT PROJECT COMPLETION, (I.E. THE TOP OF FINISHED GRADE, TOP OF PAVEMENT OR TOP OF CURB.)
- ALL SPOT ELEVATIONS ARE TOP OF CURB UNLESS NOTED OTHERWISE. SPOT ELEVATIONS FOLLOWED BY HP INDICATE HIGH POINTS. SPOT ELEVATIONS NOTED TC/P INDICATE THAT TOP OF CURB ELEVATION EQUALS PAVEMENT ELEVATION.
- THE CONTRACTOR SHALL ADJUST ALL EXISTING MANHOLE COVERS, VALVE BOXES OR OTHER SURFACE FEATURES WITHIN THE LIMITS OF GRADING WHICH ARE TO REMAIN TO MATCH THE SURFACE PROPOSED ELEVATION.
- REFER TO GEOTECHNICAL REPORT FOR ALL THE BORING INFORMATION PROVIDED.

SITE LEGEND:

-  CONCRETE PAVEMENT
-  ASPHALT PAVEMENT
-  GRAVEL/MULCH
-  CURB AND GUTTER TYPE 1
-  CURB AND GUTTER TYPE 2

LEGEND

- TOP TOP OF CURB INLET
- TC TOP OF CURB ELEVATION
- EP EXISTING PAVEMENT ELEVATION
- P PAVEMENT ELEVATION
- FF FINISHED FLOOR
- G FINISHED GRADE
- DIRECTION ARROW

GastingerWalker &

Architects Interior Designers Construction Managers
817 Wyandotte Kansas City Missouri 64105 816.421.8200 gastingerwalker.com

CIVIL
Taliaferro & Browne, Inc
1020 East 8th St.
Kansas City, MO 64106
816.283.3456

STRUCTURAL
Bob D. Campbell
4338 Bellevue Ave.
Kansas City, MO 64111
816.531.4144

M/E/P
IMEG
1600 Baltimore, Suite 300
Kansas City, MO 64108
761.842.8437

SAIA LTL Freight

Terminal Expansion and Remodel
4525 South Palisade Ave.
Wichita, KS 67217

SAIA LTL Freight
11465 Johns Creek Parkway
Johns Creek, GA 30097
800.765.7242

ISSUED FOR:

Review 19 January 2022

FINAL PLAN SET

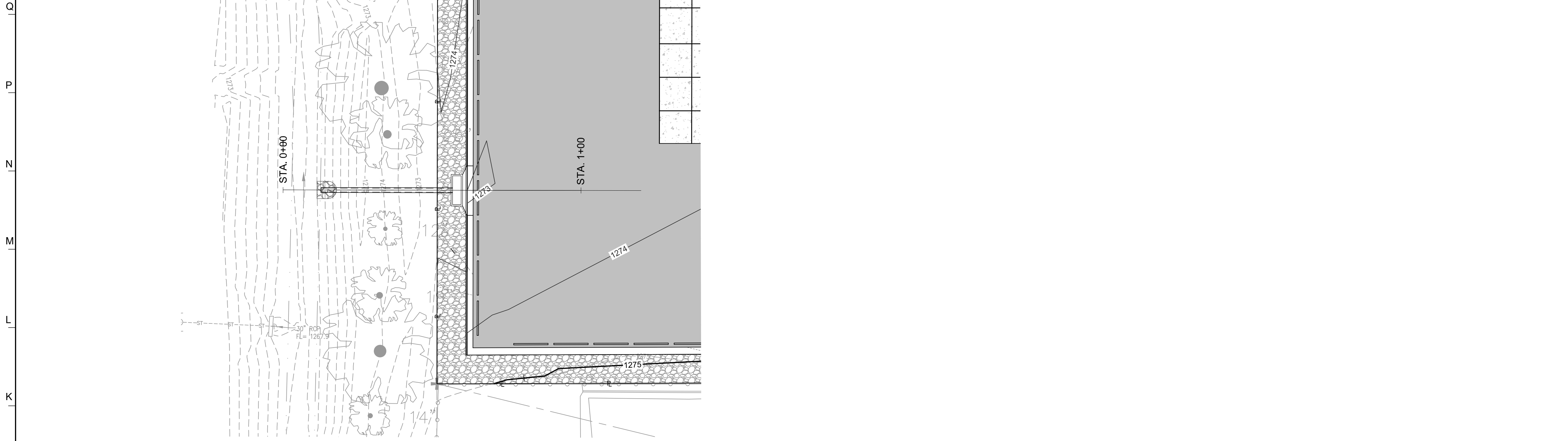


Drawn By TE/WB
Checked By MN/LJG

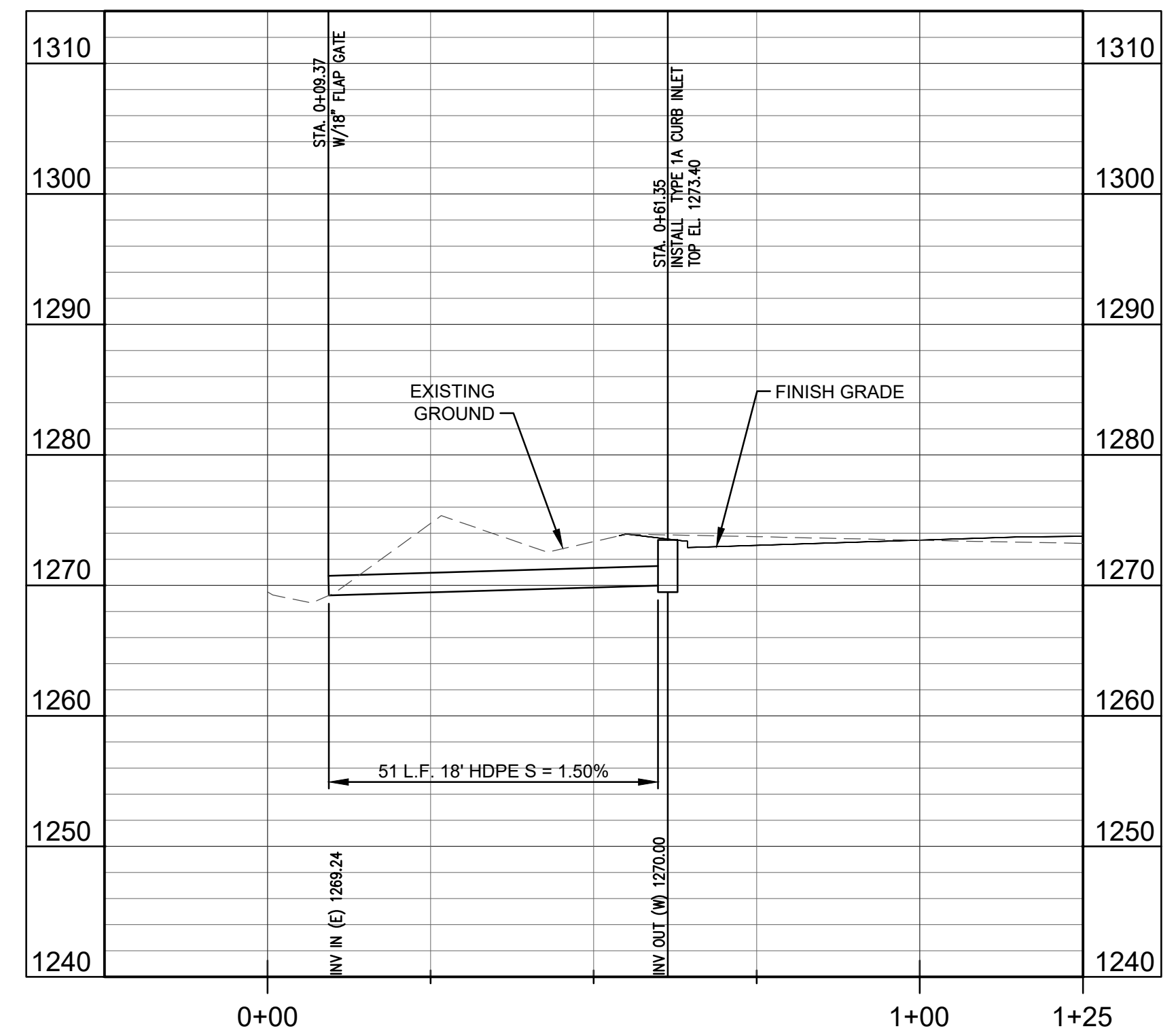
SITE GRADING PLAN

C-105

1 2 3 4 5 6 7 8 9 10 11 12 13 14 15 16 17 18 19 20 21 22

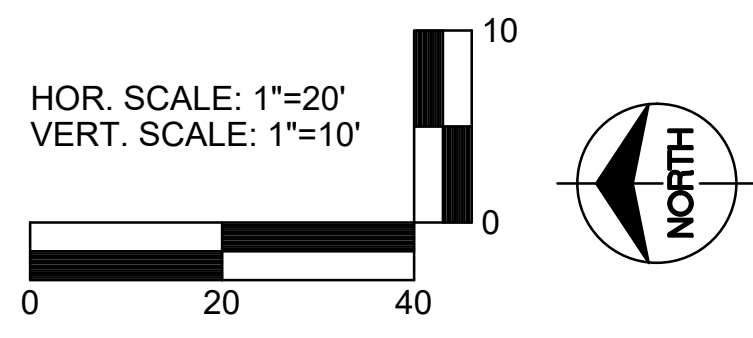


PLAN VIEW



PROFILE VIEW

BUILT PER PLAN



K:\Net\job2\72-1380\DESIGN\SITE\C106.dwg Oct. 22, 2021 - 3:45pm

1 2 3 4 5 6 7 8 9 10 11 12 13 14 15 16 17 18 19 20 21 22

GastingerWalker &

Architects | Interior Designers | Construction Managers
817 Wyandotte | Kansas City, Missouri 64105 816.421.8200 gastingerwalker.com

CIVIL
Taliaferro & Browne, Inc
1020 East 8th St.
Kansas City, MO 64106
816.283.3456
STRUCTURAL
Bob D. Campbell
4338 Belleview Ave.
Kansas City, MO 64111
816.531.4144
M/E/P
IMEG
1600 Baltimore, Suite 300
Kansas City, MO 64108
761.842.8437

SAIA LTL Freight

Terminal Expansion and Remodel
4525 South Palisade Ave.
Wichita, KS 67217

SAIA LTL Freight
11465 Johns Creek Parkway
Johns Creek, GA 30097
800.765.7242

ISSUED FOR:

Review 19 January 2022

FINAL PLAN SET



Drawn By TE/WB
Checked By MN/LJG

STORM SEWER PROFILE

C-106

Project Number: 2021.229 © Copyright 2021



FLOOD ZONE DESIGNATION:

THE ACCORDING TO THE FEDERAL EMERGENCY MANAGEMENT AGENCY (FEMA), MAP FIRM NUMBER 20173C0502G, EFFECTIVE DECEMBER 22, 2016, THE PROPERTY SHOWN HERON IS LOCATED IN ZONE X (NO SHADING). NAD 1983 STATE PLANE KANSAS SOUTH FIPS 1502 FEET; WETERN HEMISPHERE; VERTICAL DATUM NAVD 88.

LEGEND:

- DRAINAGE BOUNDARY
- DRAINAGE FLOW PATH
- EXISTING CONTOURS
- 1270 PROPOSED MAJOR CONTOURS
- 1273 PROPOSED MINOR CONTOURS

Site Peak Runoff							
Description	Percent Impervious (%)	SCS Soil Type (%)	CN	Tc (hr)	in/hr	Area(acres)	Q(cfs)
Existing Basin A (2yr.)	50	B(50)	79	0.16	5.08	1.30	2.83
Existing Basin A (5yr.)			79	0.16	6.35	1.30	4.31
Existing Basin A (10yr.)			79	0.16	7.30	1.30	5.54
Existing Basin A (25yr.)			79	0.16	8.53	1.30	6.79
Existing Basin A (100yr.)			79	0.16	10.38	1.30	9.49
Proposed Basin A (2yr.)	99	B(1)	98	0.10	5.08	1.30	5.77
Proposed Basin A (5yr.)			98	0.10	6.35	1.30	7.45
Proposed Basin A (10yr.)			98	0.10	7.30	1.30	8.79
Proposed Basin A (25yr.)			98	0.10	8.53	1.30	10.13
Proposed Basin A (100yr.)			98	0.10	10.38	1.30	12.97

FLOOD HAZARD INFORMATION

SEE THIS REPORT FOR ZONE DESCRIPTIONS AND INDEX MAP. THE INFORMATION DEPICTED ON THIS MAP AND SUPPORTING DOCUMENTATION ARE ALSO AVAILABLE IN DIGITAL FORMAT AT [HTTP://WWW.FEMA.GOV](http://www.fema.gov)

WITHOUT BASE FLOOD ELEVATION (BFE)
 Zone AE, AH, AO, AH, AE, AO
 With BFE or Depth Zone AE, AO, AH, AE, AO

SPECIAL FLOOD HAZARD AREAS
 Regulatory Floodway

OTHER AREAS OF FLOOD HAZARD
 0.2% Annual Chance Flood Hazard, Areas of 1% Annual Chance Flood with average depth less than one foot or with drainage areas of less than one square mile. Zone X
 Future Conditions 1% Annual Chance Flood Hazard. Zone X
 Area with Reduced Flood Risk due to Levee. See Notes. Zone X

OTHER AREAS
 NO SCREEN: Areas Determined to be Outside the 0.2% Annual Chance Floodplain. Zone X
 Area of Undetermined Flood Hazard. Zone D

GENERAL STRUCTURES
 Accredited or Provisionally Accredited Levee, Dike, or Floodwall
 Non-accredited Levee, Dike, or Floodwall

CROSS SECTIONS WITH 1% ANNUAL CHANCE WATER SURFACE ELEVATION (BFE)
 18.2
 17.5

OTHER FEATURES
 Profile Baseline
 Hydrographic Feature
 Base Flood Elevation Line (BFE)
 Limit of Study
 Jurisdiction Boundary

NOTES TO USERS

For informative and questions about this map, available products associated with this FIRI including historic versions of the FIRI, how to order products or the National Flood Insurance Program in general, please call the FEMA Map Information Center at 1-877-FEMA-6477 or visit the FEMA Map Service Center website at <http://mfc.fema.gov>. Available products may include previously issued Letters of Map Change, a Flood Insurance Study Report, and/or digital versions of this map. Many of these products can be ordered or accessed directly from the website. Users may determine the current map date for each FIRI panel by using the FEMA Map Service Center website or by using the FEMA Map Information Center.

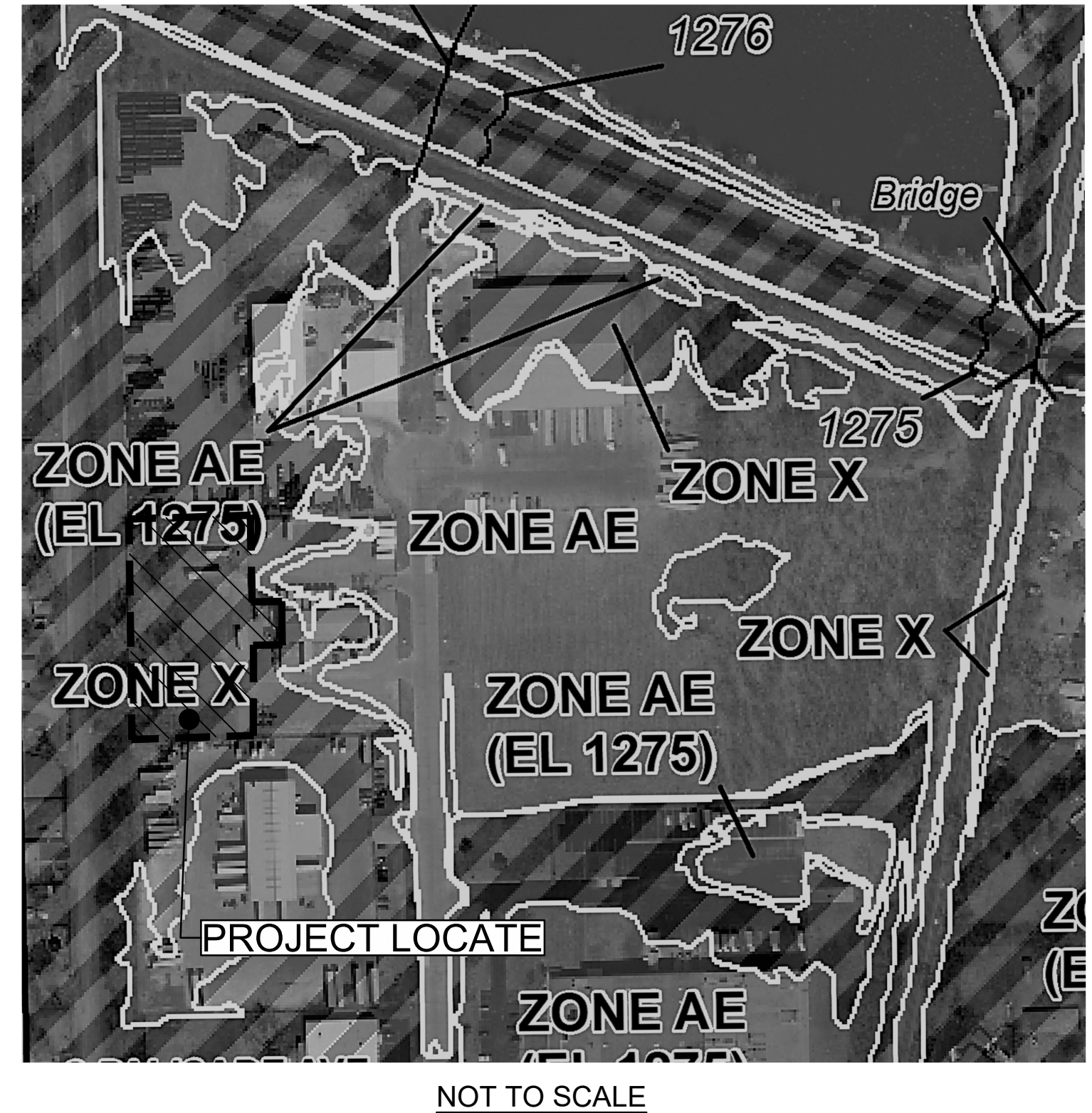
Communities receiving land on adjacent FIRI panels must obtain a current copy of the adjacent panel as well as the current FIRI book. These may be ordered directly from the Map Service Center at the number listed above.

For community and countywide map dates refer to the Flood Insurance Study report for this jurisdiction.

To determine if flood insurance is available in the community, contact your insurance agent or call the National Flood Insurance Program at 1-800-425-6242.

See map information shown on the FIRI map provided in digital format by Seigick County Division of Information & Operations. This information was derived from digital orthophotography at 6 inch resolution for Seigick County from photography dated 2014.

ACCREDITED LEVEE NOTES TO USERS: Check with your local community to obtain more information, such as the estimated level of protection provided (which may exceed the 1-percent-annual-chance level) and Emergency Action Plan, on the levee systems shown as providing protection for areas on this panel. To mitigate flood risk in critical risk areas, property owners and residents are encouraged to consider flood insurance and floodproofing or other protective measures. For more information on flood insurance, interested parties should visit the FEMA website at <http://www.fema.gov/business/private.cfm>.



Gastinger Walker &
 Architects | Interior Designers | Construction Managers
 817 Wyandotte Kansas City Missouri 64105 816.421.8200 gastingerwalker.com

CIVIL
 Taliaferro & Browne, Inc
 1020 East 8th St.
 Kansas City, MO 64106
 816.283.3456

STRUCTURAL
 Bob D. Campbell
 4338 Bellevue Ave.
 Kansas City, MO 64111
 816.531.4144

M/E/P
 IMEG
 1600 Baltimore, Suite 300
 Kansas City, MO 64108
 761.842.8437

SAIA LTL Freight

Terminal Expansion and Remodel
 4525 South Palisade Ave.
 Wichita, KS 67217

SAIA LTL Freight
 11465 Johns Creek Parkway
 Johns Creek, GA 30097
 800.765.7242

ISSUED FOR:

Review 19 January 2022

FINAL PLAN SET



Drawn By _____ TE/WB
 Checked By _____ MN/LJG

DRAINAGE PLAN

C-107

K:\Net\pbz\72-1380\DESIGN\SITE\C107.dwg Jan 19, 2022 - 10:09am

LEGAL DESCRIPTION

THE NORTH 326.75 FEET OF LOT 8,
ROCK ISLAND INDUSTRIAL PARK ADDITION
WICHITA, SEDGWICK COUNTY, KANSAS

SITE INFORMATION

	AREA	PERCENTAGE
OWNERSHIP:	130,680 S.F. (3.0 AC)	100%
PROJECT LIMITS:	130,680 S.F. (3.0 AC)	100%
IMPERVIOUS AREA:	56,192 S.F. (1.28 AC)	99% OF PROJECT LIMITS
PERVIOUS AREA:	436 S.F. (0.01 AC)	1% OF PROJECT LIMITS

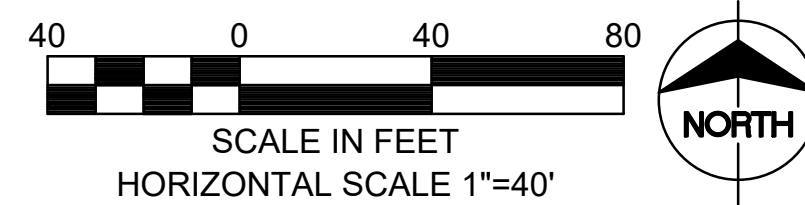
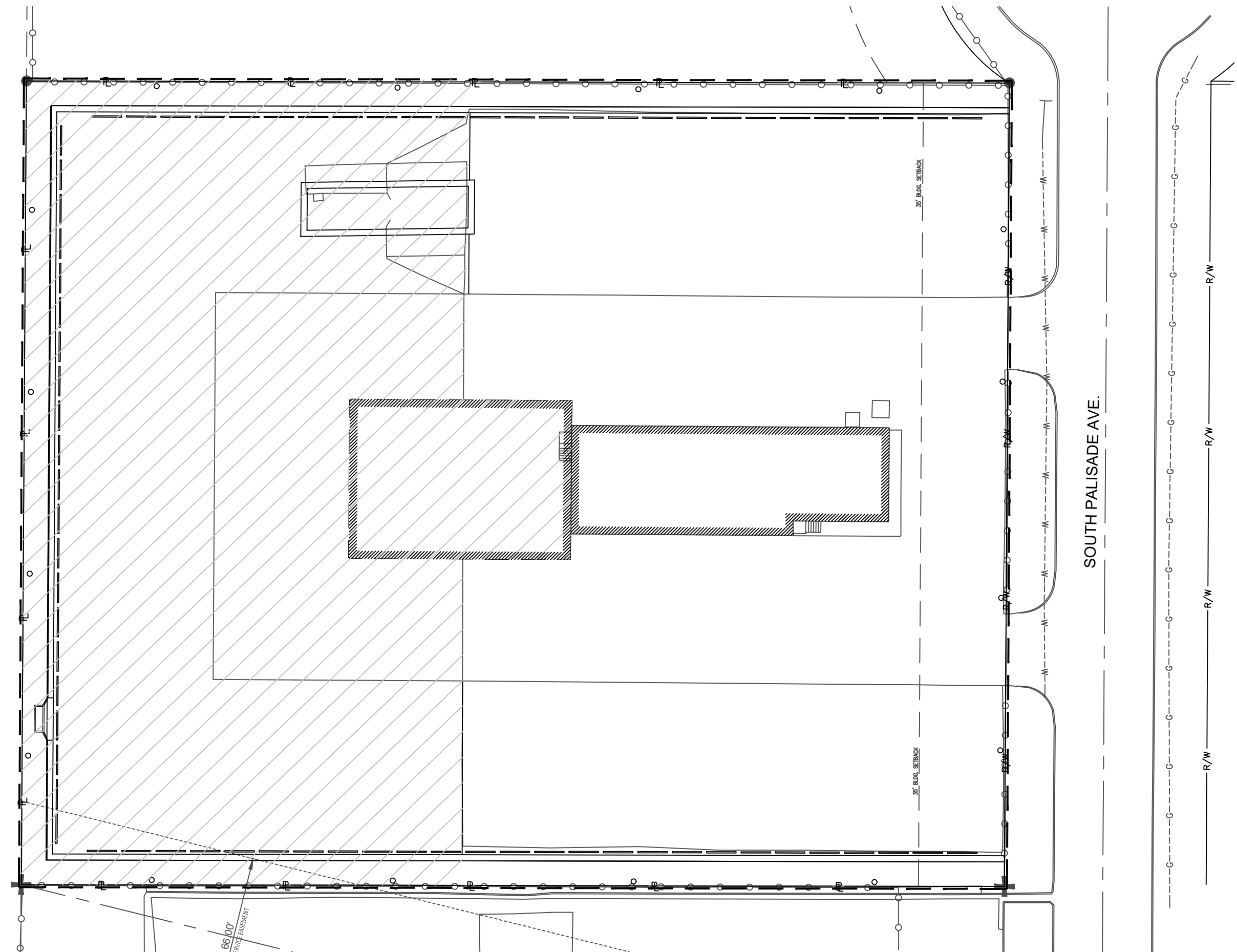
LEGEND

--- =PROJECT LIMITS

 =IMPERVIOUS AREA



VICINITY MAP
NOT TO SCALE



GastingerWalker &

Architects | Interior Designers | Construction Managers
817 Wyandotte Kansas City Missouri 64105 816.421.8200 gastingerwalker.com

CIVIL
Taliaferro & Browne, Inc
1020 East 8th St.
Kansas City, MO 64106
816.283.3456
STRUCTURAL
Bob D. Campbell
4338 Belleview Ave.
Kansas City, MO 64111
816.531.4144
M/E/P
IMEG
1600 Baltimore, Suite 300
Kansas City, MO 64108
761.842.8437

SAIA LTL Freight

Terminal Expansion and Remodel
4525 South Palisade Ave.
Wichita, KS 67217

SAIA LTL Freight
11465 Johns Creek Parkway
Johns Creek, GA 30097
800.765.7242

ISSUED FOR:

Review 19 January 2022

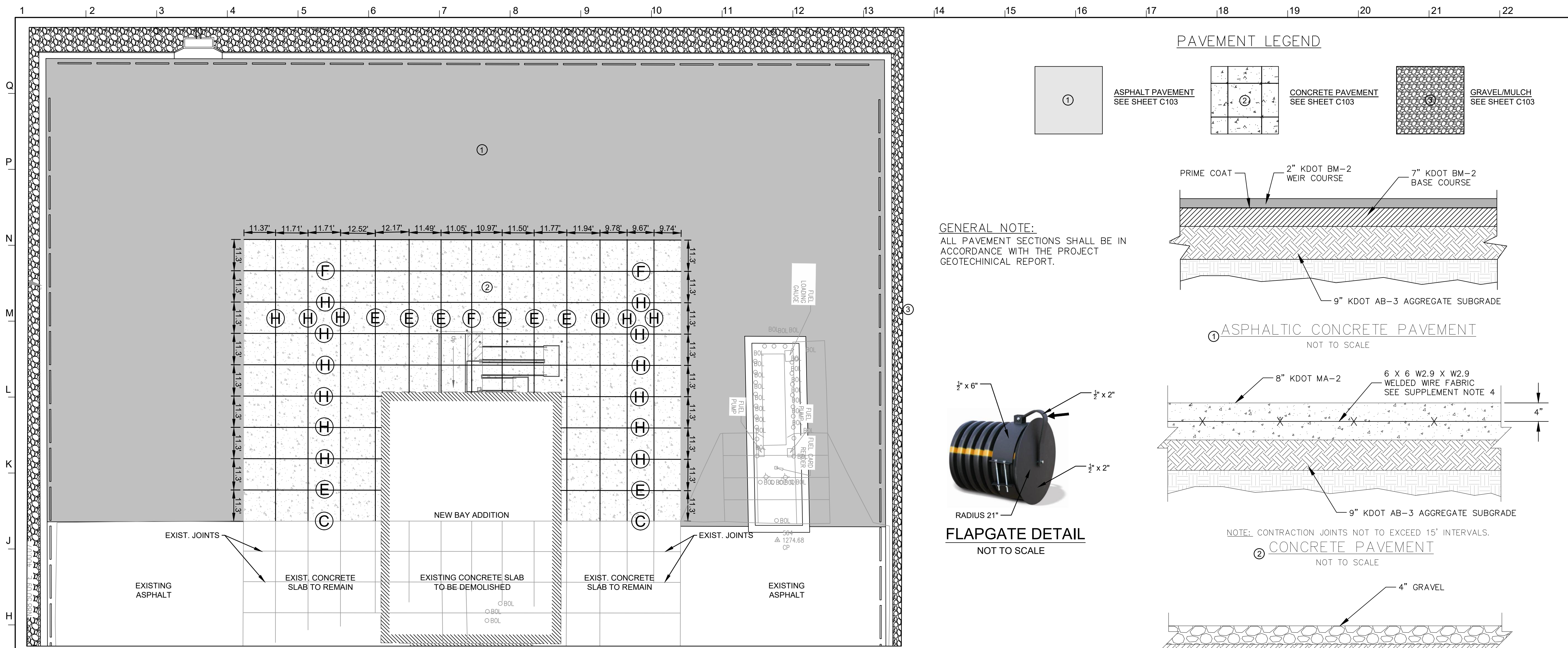
FINAL PLAN SET



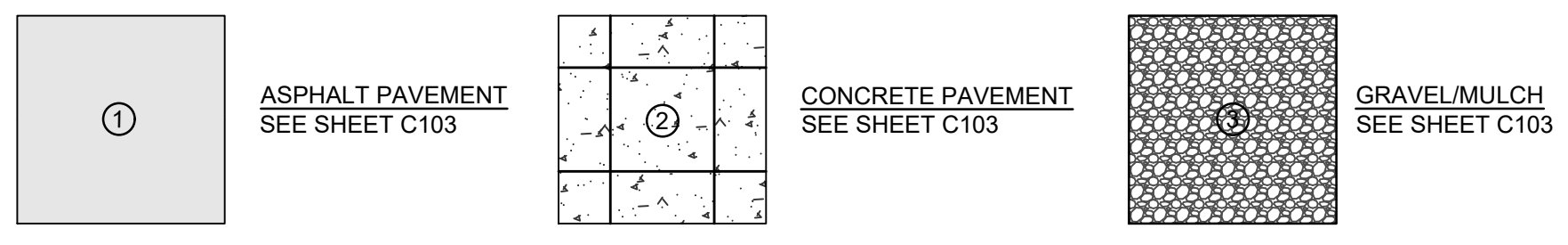
Drawn By TE/WB
Checked By MN/LJG

ERU PLAN SHEET

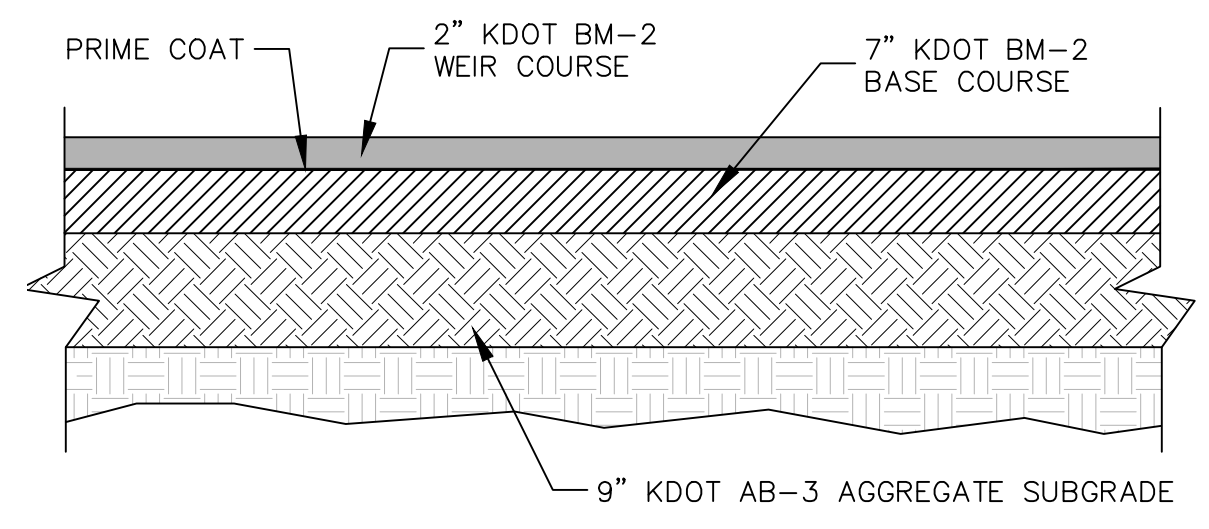
C-108



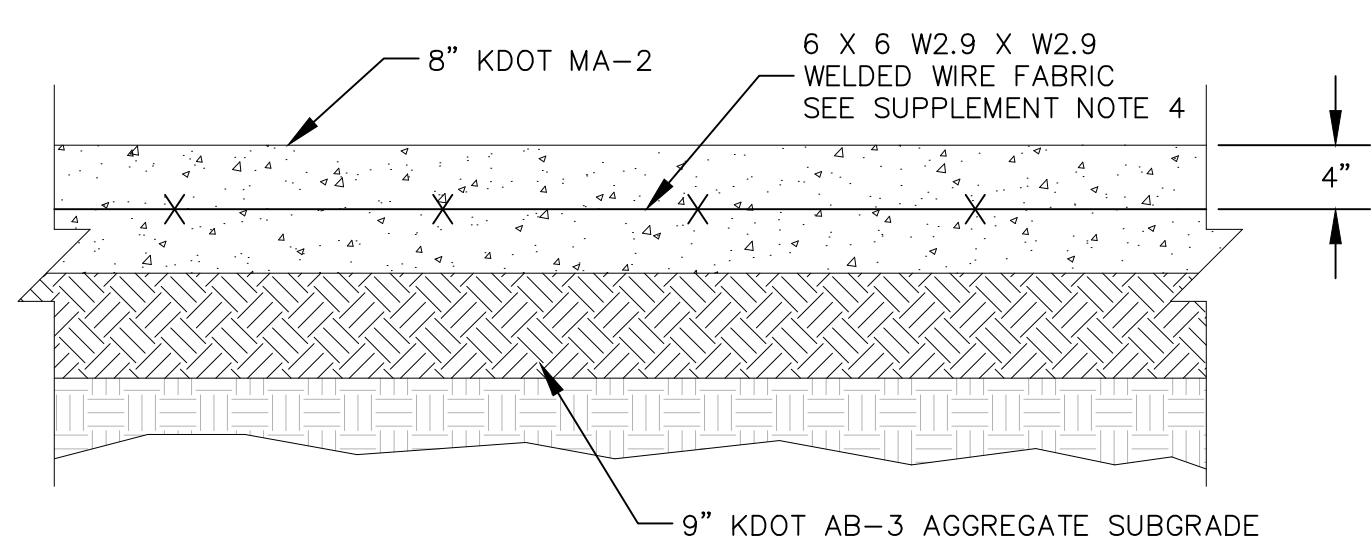
PAVEMENT LEGEND



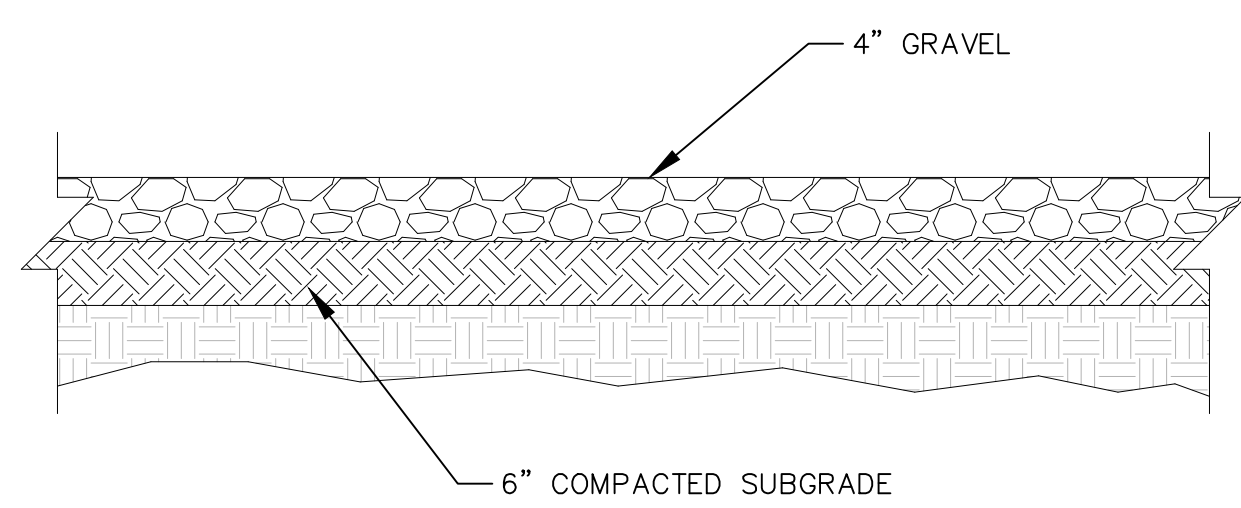
GENERAL NOTE:
ALL PAVEMENT SECTIONS SHALL BE IN ACCORDANCE WITH THE PROJECT GEOTECHNICAL REPORT.



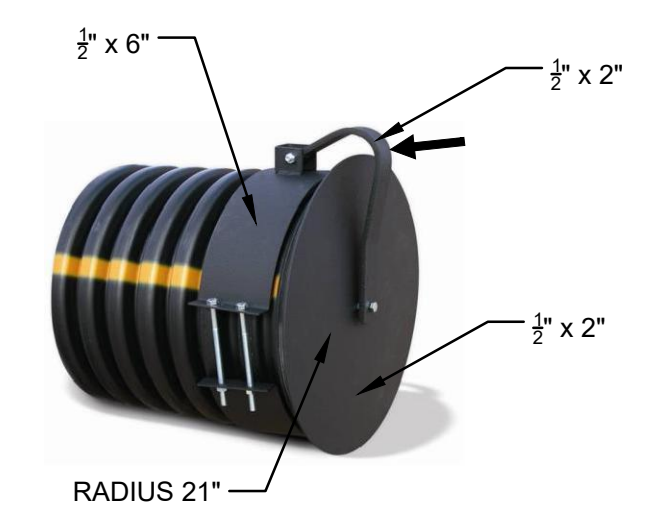
① ASPHALTIC CONCRETE PAVEMENT
NOT TO SCALE



② CONCRETE PAVEMENT
NOT TO SCALE



③ GRAVEL AREA
NOT TO SCALE



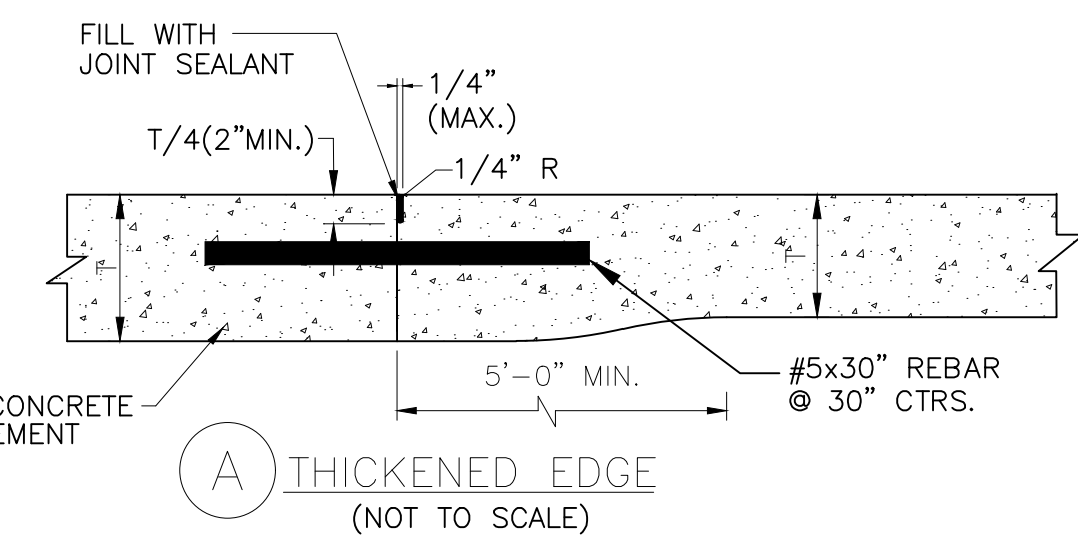
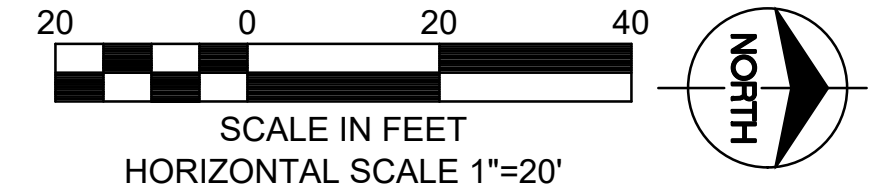
FLAPGATE DETAIL
NOT TO SCALE

NOTE: CONTRACTION JOINTS NOT TO EXCEED 15' INTERVALS.

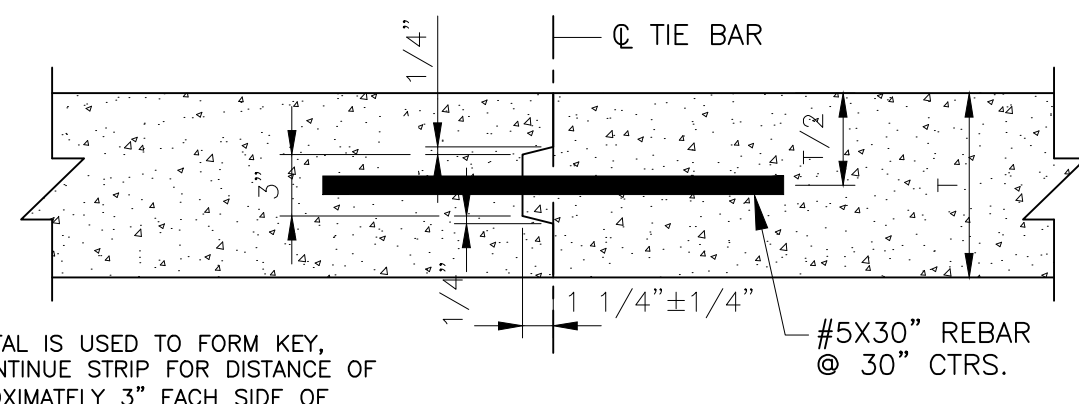
SUPPLEMENTAL NOTES

1. ALL 8" CONCRETE PAVEMENTS SHALL BE REINFORCED WITH 6x6-W2.9xW2.9 MINIMUM. WWF MESH SHALL BE PLACED IN THE CENTER OF CONCRETE PAVEMENT.
2. APPLY JOINT SEALANTS PER THE CONTRACT SPECIFICATIONS.
3. JOINT SPACING FOR 8" CONCRETE PAVEMENTS SHALL NOT EXCEED 15'-0" MAXIMUM.
4. WELDED WIRE FABRIC (WWF) SHALL BE PLACED BETWEEN THE JOINTS ONLY.

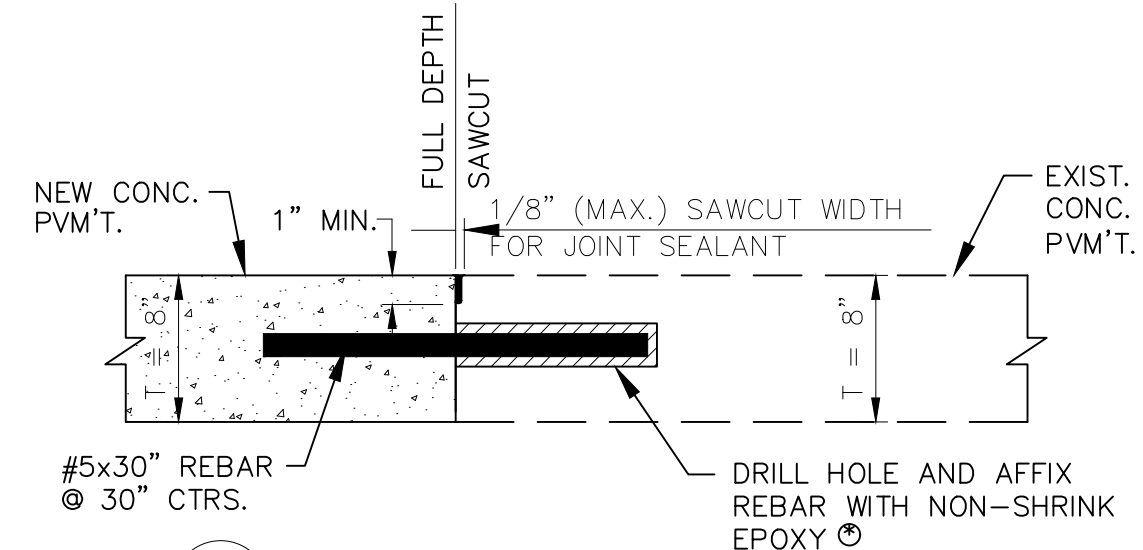
CONCRETE PAVING AREA



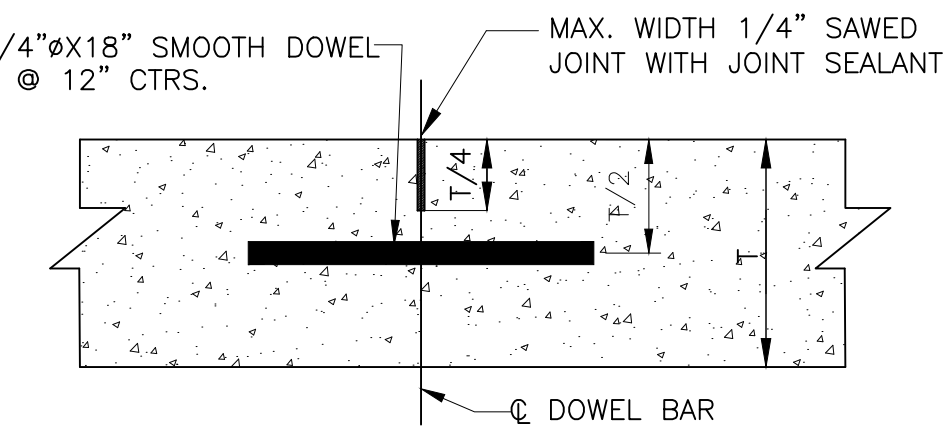
A THICKENED EDGE
(NOT TO SCALE)



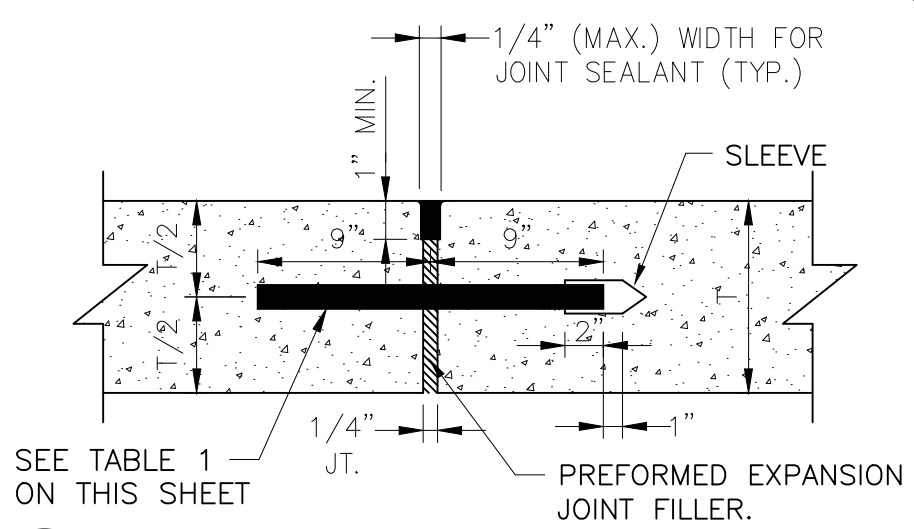
B TONGUE AND GROOVE JOINTS FOR PVM'T THICKNESS > 8"
(NOT TO SCALE)



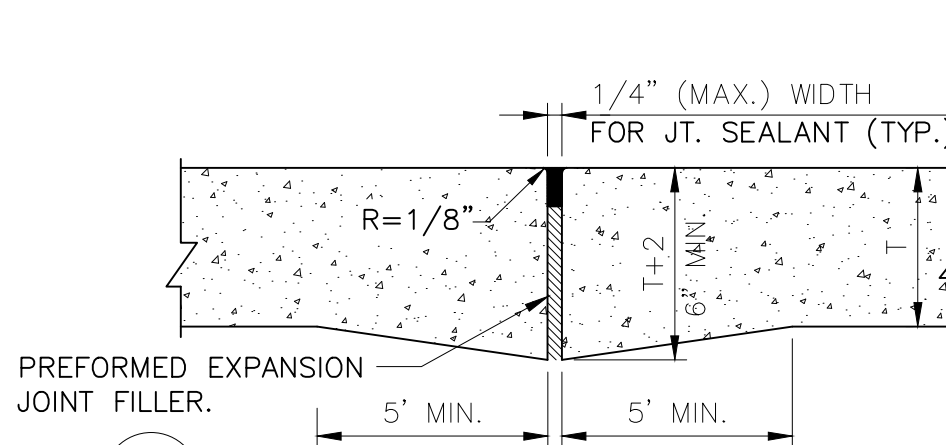
C LOAD-TRANSFER JOINTS
(NOT TO SCALE)



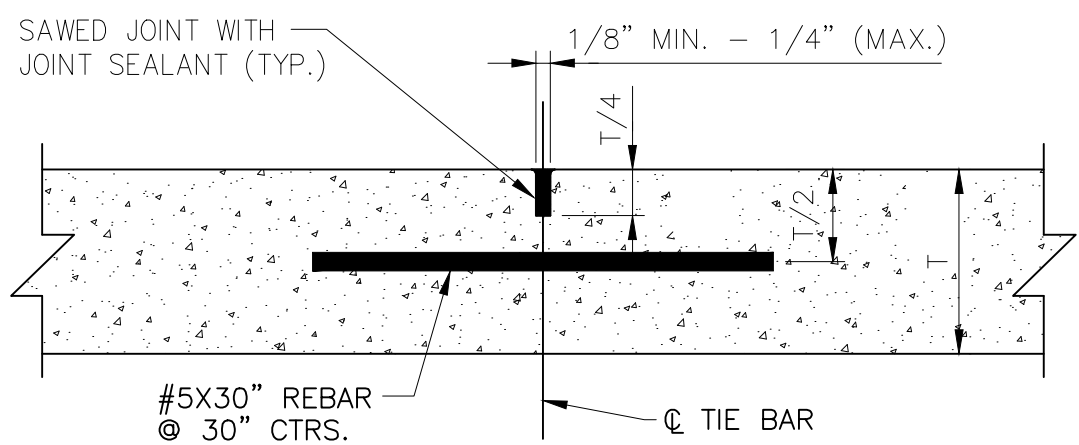
D DOWELED CONTRACTION JOINT
(NOT TO SCALE)



F DOWELED EXPANSION JOINT DETAIL
(NOT TO SCALE)



G EXPANSION JOINT W/O DOWEL
(NOT TO SCALE)



H LONGITUDINAL JOINT
(NOT TO SCALE)

P.C. CONCRETE PAVEMENT JOINT DETAILS

NOT TO SCALE

TABLE 1 - DOWELS SCHEDULE

CONCRETE PAVEMENT THICKNESS	DOWEL DIA., LENGTH (L) & SPACING
8"	1-1/4"Ø x 18" @ 30" C/C

SAIA LTL Freight

Terminal Expansion and Remodel
4525 South Palisade Ave.
Wichita, KS 67217

SAIA LTL Freight

11465 Johns Creek Parkway
Johns Creek, GA 30097
800.765.7242

ISSUED FOR:

Review 19 January 2022

FINAL PLAN SET



Drawn By TE/WB
Checked By MN/LJG

MISCELLANEOUS DETAILS

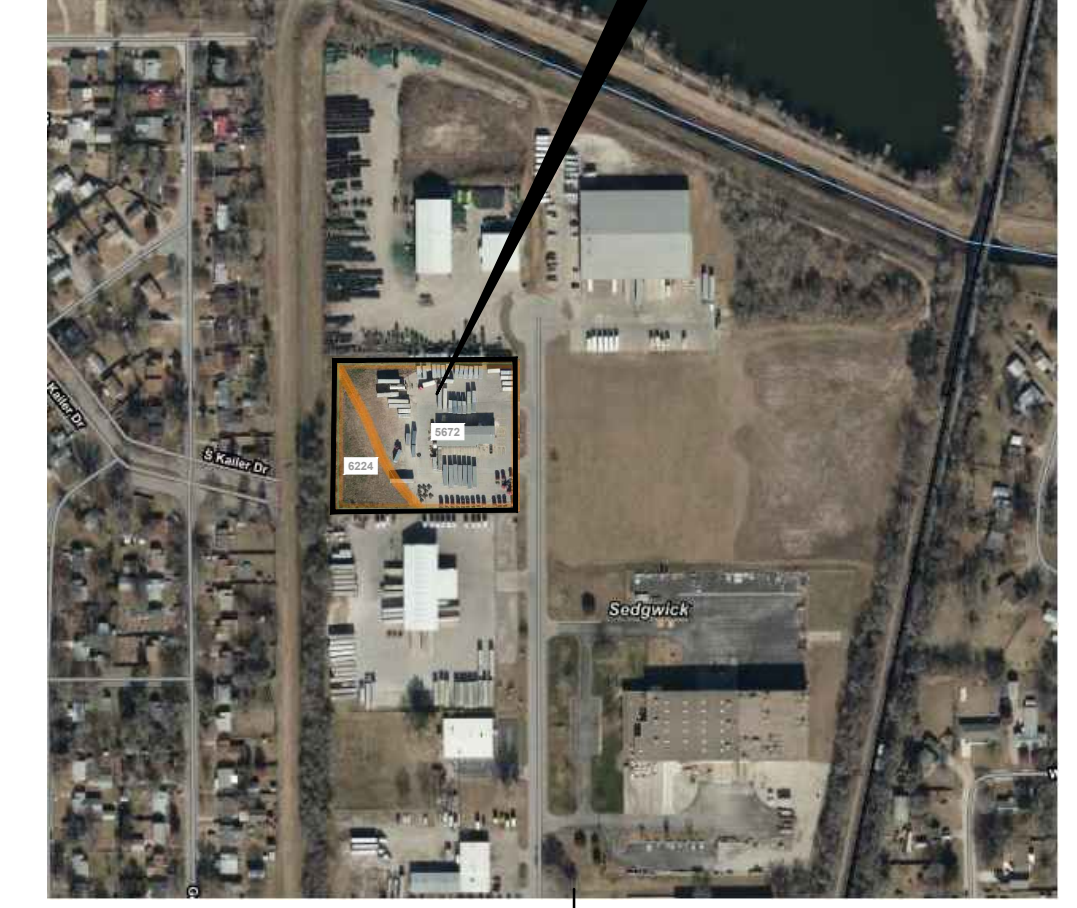
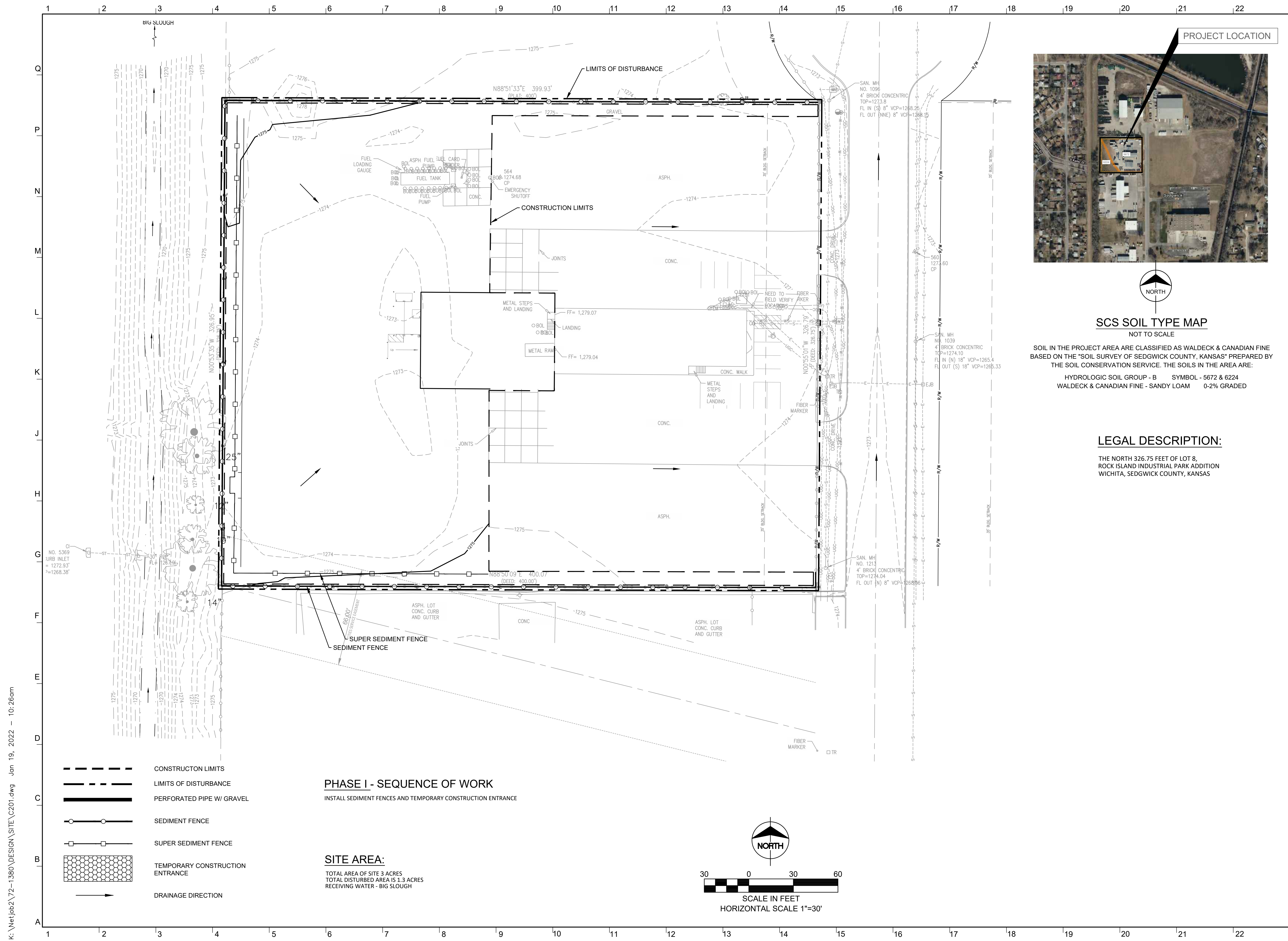
C-109

Project Number: 2021.229 © Copyright 2021

k:\net\pb2\72-1380\DESIGN\SITE\C109.dwg Jan 19, 2022 10:15am

GastingerWalker &
Architects Interior Designers Construction Managers
817 Wyandotte Kansas City Missouri 64105 816.421.8200 gastingerwalker.com

CIVIL
Taliaferro & Browne, Inc.
1020 East 8th St.
Kansas City, MO 64106
816.283.3456
STRUCTURAL
Bob D. Campbell
4338 Bellevue Ave.
Kansas City, MO 64111
816.531.4144
M/E/P
IMEG
1600 Baltimore, Suite 300
Kansas City, MO 64108
761.842.8437



SCS SOIL TYPE MAP
NOT TO SCALE

SOIL IN THE PROJECT AREA ARE CLASSIFIED AS WALDECK & CANADIAN FINE BASED ON THE "SOIL SURVEY OF SEDGWICK COUNTY, KANSAS" PREPARED BY THE SOIL CONSERVATION SERVICE. THE SOILS IN THE AREA ARE:

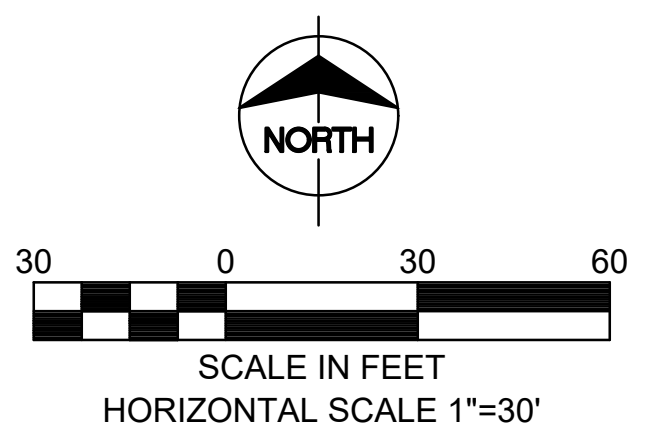
HYDROLOGIC SOIL GROUP - B SYMBOL - 5672 & 6224
 WALLECK & CANADIAN FINE - SANDY LOAM 0-2% GRADED

LEGAL DESCRIPTION:
 THE NORTH 326.75 FEET OF LOT 8,
 ROCK ISLAND INDUSTRIAL PARK ADDITION
 WICHITA, SEDGWICK COUNTY, KANSAS

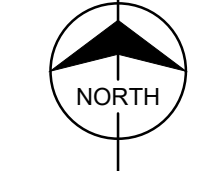
- CONSTRUCTION LIMITS
- LIMITS OF DISTURBANCE
- PERFORATED PIPE W/ GRAVEL
- SEDIMENT FENCE
- SUPER SEDIMENT FENCE
- TEMPORARY CONSTRUCTION ENTRANCE
- DRAINAGE DIRECTION

PHASE I - SEQUENCE OF WORK
 INSTALL SEDIMENT FENCES AND TEMPORARY CONSTRUCTION ENTRANCE

SITE AREA:
 TOTAL AREA OF SITE 3 ACRES
 TOTAL DISTURBED AREA IS 1.3 ACRES
 RECEIVING WATER - BIG SLOUGH



PROJECT LOCATION



K:\Net\pb2\72-1380\DESIGN\SITE\C201.dwg Jan 19, 2022 - 10:26am

GastingerWalker &
 Architects | Interior Designers | Construction Managers
 817 Wyandotte Kansas City Missouri 64105 816.421.8200 gastingerwalker.com

CIVIL
 Taliaferro & Browne, Inc.
 1020 East 8th St.
 Kansas City, MO 64106
 816.283.3456

STRUCTURAL
 Bob D. Campbell
 4338 Bellevue Ave.
 Kansas City, MO 64111
 816.531.4144

M/E/P
 IMEG
 1600 Baltimore, Suite 300
 Kansas City, MO 64108
 761.842.8437

SAIA LTL Freight

Terminal Expansion and Remodel
 4525 South Palisade Ave.
 Wichita, KS 67217

SAIA LTL Freight
 11465 Johns Creek Parkway
 Johns Creek, GA 30097
 800.765.7242

ISSUED FOR:
 Review 19 January 2022

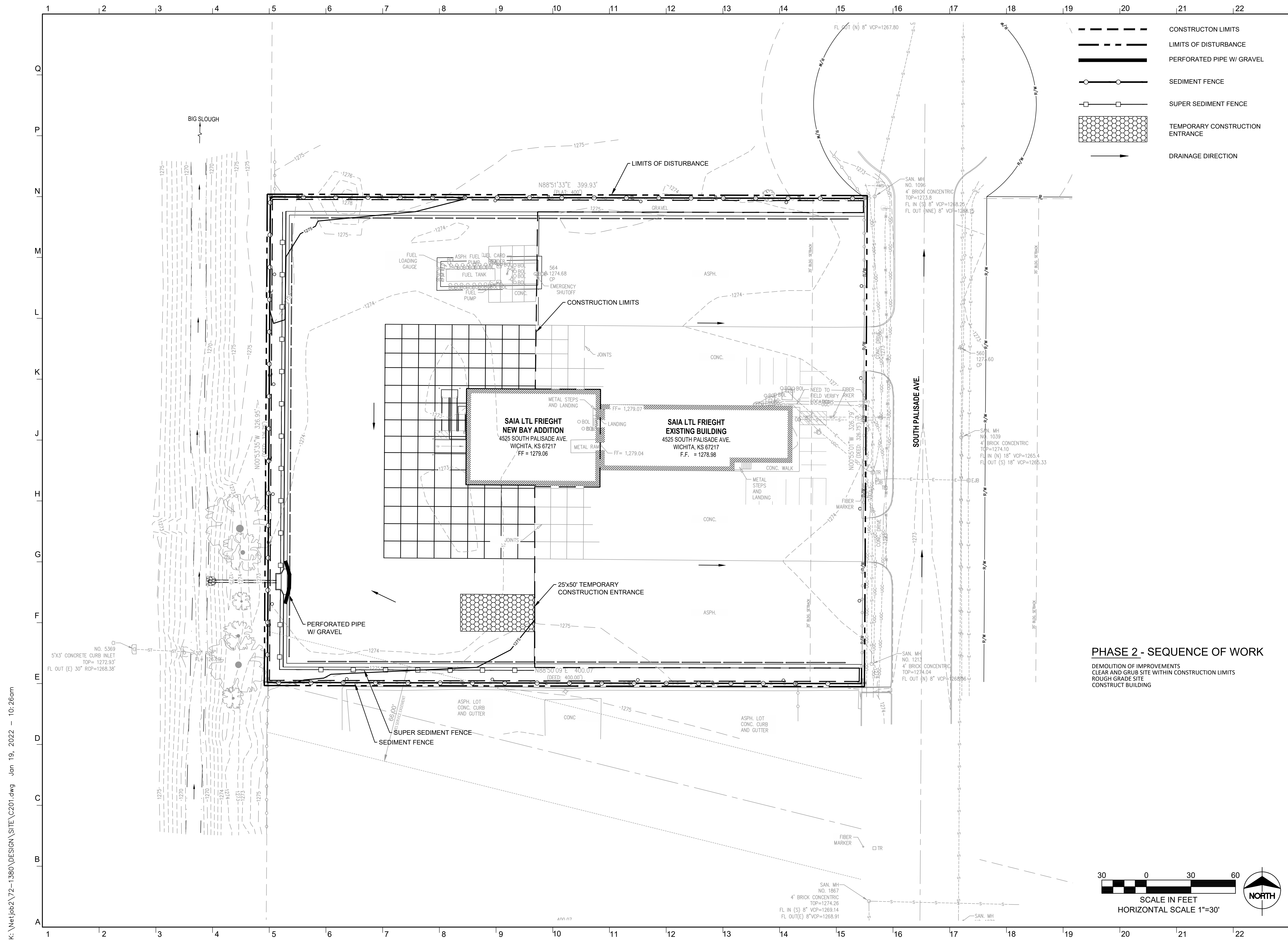
FINAL PLAN SET



Drawn By _____ TE/WB
 Checked By _____ MN/LJG

**EROSION CONTROL PLAN
 PHASE 1**

C-201
 Project Number: 2021.229 © Copyright 2021



GastingerWalker &

Architects Interior Designers Construction Managers
 817 Wyandotte Kansas City Missouri 64105 816.421.8200 gastingerwalker.com

CIVIL
 Taliaferro & Browne, Inc.
 1020 East 8th St.
 Kansas City, MO 64106
 816.283.3456
 STRUCTURAL
 Bob D. Campbell
 4338 Bellevue Ave.
 Kansas City, MO 64111
 816.531.4144
 M/E/P
 IMEG
 1600 Baltimore, Suite 300
 Kansas City, MO 64108
 761.842.8437

SAIA LTL Freight

Terminal Expansion and Remodel
 4525 South Palisade Ave.
 Wichita, KS 67217

SAIA LTL Freight
 11465 Johns Creek Parkway
 Johns Creek, GA 30097
 800.765.7242

ISSUED FOR:
 Review 19 January 2022

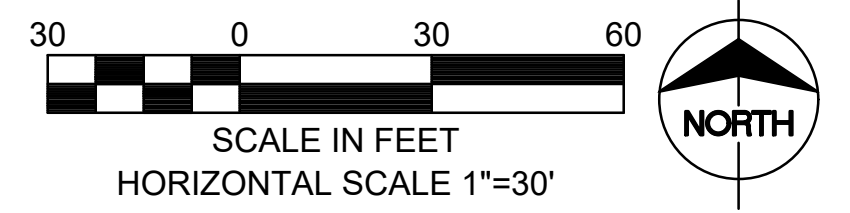
PHASE 2 - SEQUENCE OF WORK
 DEMOLITION OF IMPROVEMENTS
 CLEAR AND GRUB SITE WITHIN CONSTRUCTION LIMITS
 ROUGH GRADE SITE
 CONSTRUCT BUILDING

FINAL PLAN SET



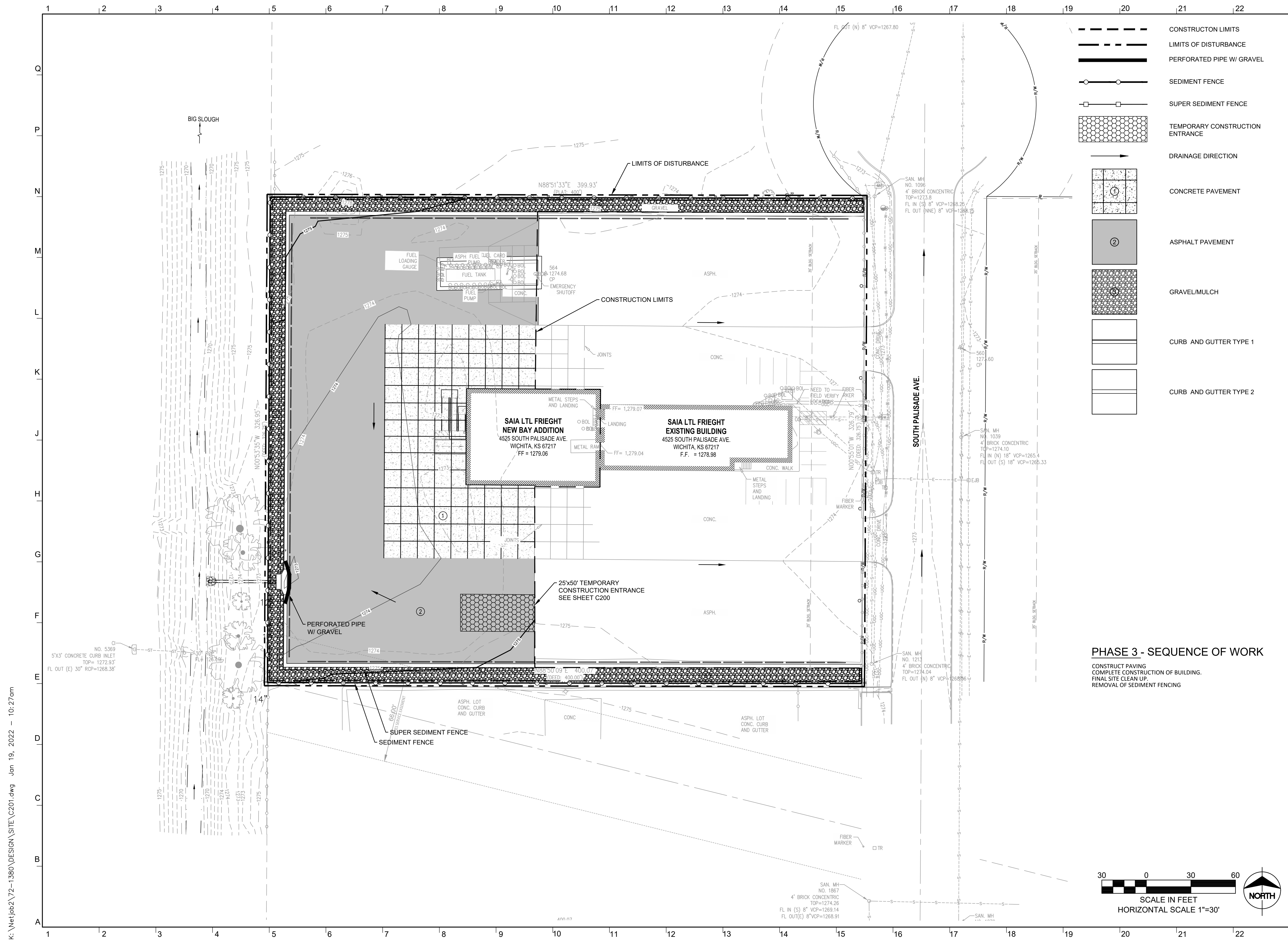
Drawn By TE/WB
 Checked By MN/LJG

EROSION CONTROL PLAN PHASE 2



C-202

k:\net\job2\72-1380\DESIGN\SITE\C201.dwg Jan 19, 2022 10:26am



- CONSTRUCTION LIMITS
- LIMITS OF DISTURBANCE
- PERFORATED PIPE W/ GRAVEL
- SEDIMENT FENCE
- SUPER SEDIMENT FENCE
- TEMPORARY CONSTRUCTION ENTRANCE
- DRAINAGE DIRECTION
- CONCRETE PAVEMENT
- ASPHALT PAVEMENT
- GRAVEL/MULCH
- CURB AND GUTTER TYPE 1
- CURB AND GUTTER TYPE 2

PHASE 3 - SEQUENCE OF WORK

CONSTRUCT PAVING
 COMPLETE CONSTRUCTION OF BUILDING.
 FINAL SITE CLEAN UP.
 REMOVAL OF SEDIMENT FENCING

GastingerWalker &

Architects Interior Designers Construction Managers
 817 Wyandotte Kansas City Missouri 64105 816.421.8200 gastingerwalker.com

CIVIL
 Taliaferro & Browne, Inc
 1020 East 8th St.
 Kansas City, MO 64106
 816.283.3456

STRUCTURAL
 Bob D. Campbell
 4338 Bellevue Ave.
 Kansas City, MO 64111
 816.531.4144

M/E/P
 IMEG
 1600 Baltimore, Suite 300
 Kansas City, MO 64108
 761.842.8437

SAIA LTL Freight

Terminal Expansion and Remodel
 4525 South Palisade Ave.
 Wichita, KS 67217

SAIA LTL Freight
 11465 Johns Creek Parkway
 Johns Creek, GA 30097
 800.765.7242

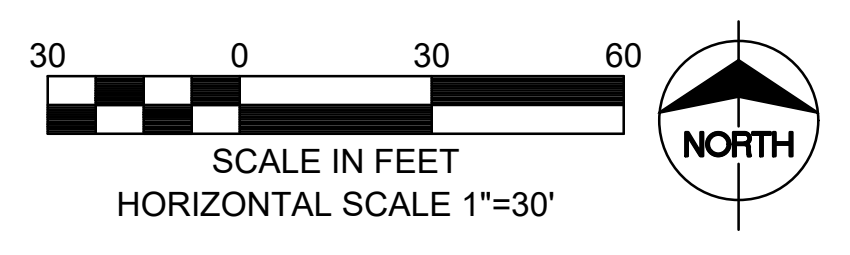
ISSUED FOR:
 Review 19 January 2022

FINAL PLAN SET



Drawn By TE/WB
 Checked By MN/LJG

EROSION CONTROL PLAN PHASE 3



C-203

k:\net\pb2\72-1380\DESIGN\SITE\C201.dwg Jan 19, 2022 10:27am