

GENERAL NOTES

- THE CONTRACTOR SHALL COMPLY WITH ALL APPLICABLE SAFETY REGULATIONS. ALL CONSTRUCTION SHALL BE COMPLETED FOLLOWING CURRENT CITY STANDARD SPECIFICATIONS AND SPECIAL PROVISIONS.
- CONTRACTOR WILL BE REQUIRED TO PROVIDE NOTICE TO UTILITY COMPANIES A MINIMUM OF SEVENTY-TWO (72) HOURS PRIOR TO ANY EXCAVATION, AS FOLLOWS:
KANSAS ONE-CALL 687-2470
THE CONTRACTOR MUST NOTIFY THE FOLLOWING IN CASE OF AN EMERGENCY:
AT&T 1-800-248-8464
BLACK HILLS ENERGY 1-800-894-8969
CITY OF WICHITA WATER & SEWER 1-316-219-8921
CITY OF WICHITA STORMWATER 1-316-268-4090
CITY OF WICHITA TRAFFIC 1-316-268-4024
COX COMMUNICATIONS 1-888-249-3530
KANSAS GAS SERVICE 1-888-482-4950
WESTAR ENERGY 1-800-544-4557
- UTILITY SERVICE LINES, POLES, ETC. ARE TO BE ADJUSTED AS NECESSARY PRIOR TO CONSTRUCTION UNLESS THE PLANS SPECIFICALLY CALL FOR THEIR ADJUSTMENT BY THE CONTRACTOR OR UNLESS THE PLANS SPECIFICALLY IDENTIFY A UTILITY TO BE ADJUSTED BY ITS OWNER DURING CONSTRUCTION. EXISTING UTILITIES AND THEIR LOCATION, AS SHOWN ON THE PLANS, REPRESENT THE BEST INFORMATION OBTAINABLE FOR DESIGN. THE CONTRACTOR WILL BE REQUIRED TO WORK AROUND EXISTING UTILITIES WITHIN THE RIGHT-OF-WAY WHICH DO NOT CONFLICT WITH PROPOSED CONSTRUCTION.
- RUBBLE FROM THE REMOVAL OF MISCELLANEOUS STRUCTURES AND EXCESS EXCAVATION WHICH IS TO BE WASTED SHALL BE DISPOSED OF ON SITES TO BE PROVIDED BY THE CONTRACTOR. THESE SITES SHALL BE APPROVED BY THE ENGINEER AS TO SUITABILITY, APPEARANCE AND SITE LOCATION. LOCATIONS, IN THE OPINION OF THE ENGINEER, THAT WILL LEAVE AN UNSIGHTLY APPEARANCE WILL NOT BE APPROVED. ALL DISPOSAL SITES MUST BE APPROVED BY THE KANSAS DEPARTMENT OF HEALTH AND ENVIRONMENT. MATERIAL EITHER STOCKPILED OR DISPOSED OF IN A FLOOD PLAIN WILL REQUIRE A KANSAS STATE BOARD OF AGRICULTURE PERMIT. ANY MATERIAL DUMPED IN WATERS OF THE UNITED STATES OR WETLANDS IS SUBJECT TO U.S. CORPS OF ENGINEERS PERMITTING REGULATIONS. ANY MATERIAL BURIED OR STOCKPILED BEYOND APPROVED CONSTRUCTION LIMITS WILL REQUIRE ADDITIONAL ARCHAEOLOGICAL INVESTIGATIONS UNLESS BURIED IN A PREVIOUSLY APPROVED BORROW LOCATION.
- TREES AND SHRUBS IN PUBLIC RIGHT-OF-WAY WHICH ARE IN DIRECT CONTACT WITH PROPOSED NEW CONSTRUCTION SHALL BE REMOVED BY THE CONTRACTOR WITH THE CITY ENGINEER'S APPROVAL. TREES AND SHRUBS WHICH ARE NOT IN DIRECT CONTACT WITH PROPOSED NEW CONSTRUCTION SHALL BE SAVED AND PROTECTED FROM DAMAGE.
- THE CONTRACTOR SHALL GIVE ALL PROPERTY OWNERS AND/OR TENANTS OF DEVELOPED PROPERTY ADJUTING THE CONSTRUCTION OF THIS PROJECT A MINIMUM OF TEN (10) DAYS NOTICE PRIOR TO START OF CONSTRUCTION.
- THE CONTRACTOR SHALL BE RESPONSIBLE FOR PRESERVING PROPERTY IRONS. THE CONTRACTOR WILL BE REQUIRED TO RE-ESTABLISH ANY PROPERTY IRONS WHICH ARE DAMAGED OR DESTROYED BY HIS CONSTRUCTION OPERATIONS. SUCH IRONS SHALL BE RE-ESTABLISHED BY A LICENSED LAND SURVEYOR IN ACCORDANCE WITH STATE LAWS.
- THE ENGINEERING DIVISION SHALL FIELD LOCATE WATER VALVES ONE TIME DURING CONSTRUCTION WHEN REQUESTED BY THE CONTRACTOR. IT SHALL BE THE CONTRACTOR'S RESPONSIBILITY TO PRESERVE SUCH FIELD LOCATIONS DURING THE CONSTRUCTION PROCESS. WATER VALVES, VALVE BOXES OR FIRE HYDRANTS DAMAGED DURING CONSTRUCTION SHALL BE REPAIRED BY CONTRACTOR AT HIS OWN EXPENSE. VALVE BOXES AND WATER METERS WITHIN THE PROJECT LIMITS SHALL BE ADJUSTED TO MATCH FINAL GRADES BY THE CONTRACTOR.
- THE CONTRACTOR SHALL NOTIFY THE INSPECTING ENGINEER AND TOM MASON AT 316-268-4574 WITH THE CITY OF WICHITA WITH THE ANTICIPATED CONSTRUCTION START DATE AND NOTIFY THEM OF PROJECT COMPLETION. STAKING AND INSPECTION FOR THIS PROJECT WILL BE THE RESPONSIBILITY OF THE CONTRACTOR.
- IF TRAFFIC WILL BE IMPACTED BY CONSTRUCTION, A TRAFFIC CONTROL PLAN MUST BE SUBMITTED AND APPROVED BY THE CITY TRAFFIC ENGINEER AT TRAFFIC@WICHITA.GOV BEFORE CONSTRUCTION CAN BEGIN. THE CONTRACTOR SHALL BE RESPONSIBLE FOR ALL TRAFFIC CONTROL MEASURES TO FACILITATE CONSTRUCTION. ALL CONSTRUCTION ZONE MARKINGS AND SIGNAGE SHALL CONFORM TO THE LATEST VERSION OF THE MANUAL ON UNIFORM TRAFFIC CONTROL DEVICES (MUTCD) AS PUBLISHED BY THE US DEPT. OF TRANSPORTATION, FEDERAL HIGHWAY ADMINISTRATION. ALL COSTS ASSOCIATED WITH CONSTRUCTION MARKINGS AND SIGNAGE SHALL BE THE CONTRACTORS RESPONSIBILITY.
- ALL ELEVATIONS SHOWN ARE NAVD 88.
- ALL AREAS DISTURBED DURING CONSTRUCTION THAT WILL NOT BE UNDER PROPOSED PAVEMENT SHALL BE RESTORED TO MATCH EXISTING CONDITIONS.

- ANY SIDEWALK, DRIVE APPROACH, OR STREET PAVEMENT REMOVED TO CONSTRUCT PROJECT MUST HAVE A PAVEMENT CUT PERMIT AND BE REPLACED BY THE CITY CONTRACTOR. PERMITS CAN BE OBTAINED BY CALLING 316-268-4501 OR 316-268-4480.
- CITY MAINTENANCE OF STORM SEWER ENDS AT THE LAST STRUCTURE IN THE EASEMENT OR RIGHT-OF-WAY.
- CONTRACTOR SHALL LIMIT THE EXTENT OF TRENCH OPENINGS OVERNIGHT AND WEEKENDS TO LESS THAN 50 FEET.
- THE INSPECTING FIRM SHALL SUBMIT TO THE CITY STORMWATER MAINTENANCE DIVISION A DIGITAL COPY OF THE CCTV INSPECTION OF THE CONDUITS AND STRUCTURES FOLLOWING CONSTRUCTION. THE DIGITAL FILE FORMATION SHALL BE COMPATIBLE WITH THE CITY INPUT TEMPLATE. A COPY OF THE TEMPLATE IS AVAILABLE UPON REQUEST AT 316-268-4090.
- THE CONTRACTOR SHALL PROTECT FROM DAMAGE AND SUPPORT EXISTING UTILITIES THROUGH CONSTRUCTION AS APPROVED BY THE UTILITY OWNER AND THE ENGINEER AT THE CONTRACTORS EXPENSE.
- A PORTION OF EXCESS EXCAVATED MATERIAL SHALL BE MOUND AROUND MANHOLES WHICH EXTEND MORE THAN ONE (1) FOOT ABOVE THE EXISTING GROUND. SUCH MOUND SHALL BE CONSTRUCTED WITH NEW DEVELOPMENT AS A SIX (6) FOOT DIAMETER FLAT TOP WITH 4 TO 1 SIDE SLOPES DOWN TO THE ORIGINAL GROUND. THE ELEVATION OF THE FLAT TOP OF THE MOUND SHALL BE 0.4 FOOT BELOW THE TOP OF THE MANHOLE.

BENCHMARKS

- BM 201. ELEVATION: 1,374.87 NAVD88
CHISELED SQUARE ON WEST BULLNOSE CURB OF MEDIAN CAMDEN CHASE STREET ON EAST SIDE 127TH STREET EAST.
- BM 202. ELEVATION: 1,378.18 NAVD88
CHISELED SQUARE ON TOP OF CURB ON SOUTH SIDE OF NORTH DRIVE FOR CHURCH OF MAGDALEN WEST OF SIDEWALK RAMP.
- BM 203. ELEVATION: 1,361.12 NAVD88
CHISELED SQUARE ON SOUTH SIDE MANHOLE LID OF CURB INLET, SOUTH SIDE OF CAMDEN CHASE STREET, 130' WEST OF THE CENTERLINE OF LINDSAY CIRCLE.

CONTROL POINTS

- CP-101. N: 1,700,888.9450, E: 1,691,330.9170
1/2" REBAR w/ PEC C.P. CAP AT SE CORNER INTERSECTION 127TH & CAMDEN CHASE.
20.90' NE TO SW CORNER AT&T MANHOLE.
26.80' SSW TO TOP STORM DRAIN CULVERT.
45.00' N TO CENTER OF GAS VALVE.
- CP-102. N: 1,700,852.4080, E: 1,691,255.1970
1/2" REBAR w/ PEC C.P. CAP S OF N ENTRANCE CHURCH OF MAGDALEN ON W SIDE 127TH ST. E.
6.80' S TO TOP CENTER STORM DRAIN CULVERT RUNNING W.
10.40' ESE TO TOP CENTER STORM DRAIN CULVERT RUNNING N UNDER DRIVE.
12.30' N TO S EDGE ASPHALT DRIVE FOR CHURCH.
- CP-103. N: 1,701,047.4040, E: 1,691,635.6240
1/2" REBAR w/ PEC C.P. CAP ON N SIDE CAMDEN CHASE ST. 330' E OF 127TH ST. E.
134.40' WSW TO CENTER OF BULLNOSE MEDIAN CAMDEN CHASE ST.
7.45' S TO N BACK OF CURB CAMDEN CHASE ST.
3.20' N TO S EDGE SIDEWALK N SIDE CAMDEN CHASE ST.

STORM SEWER IMPROVEMENTS AS BUILT PLANS

HAWTHORNE ADDITION

to serve
2430 N. 127th St. E.
CITY OF WICHITA, KANSAS

Contractor: Mies Construction Co.

Inspector: Fred Smith, Baughman Co.

As Builts by: KEK, 9/3/20

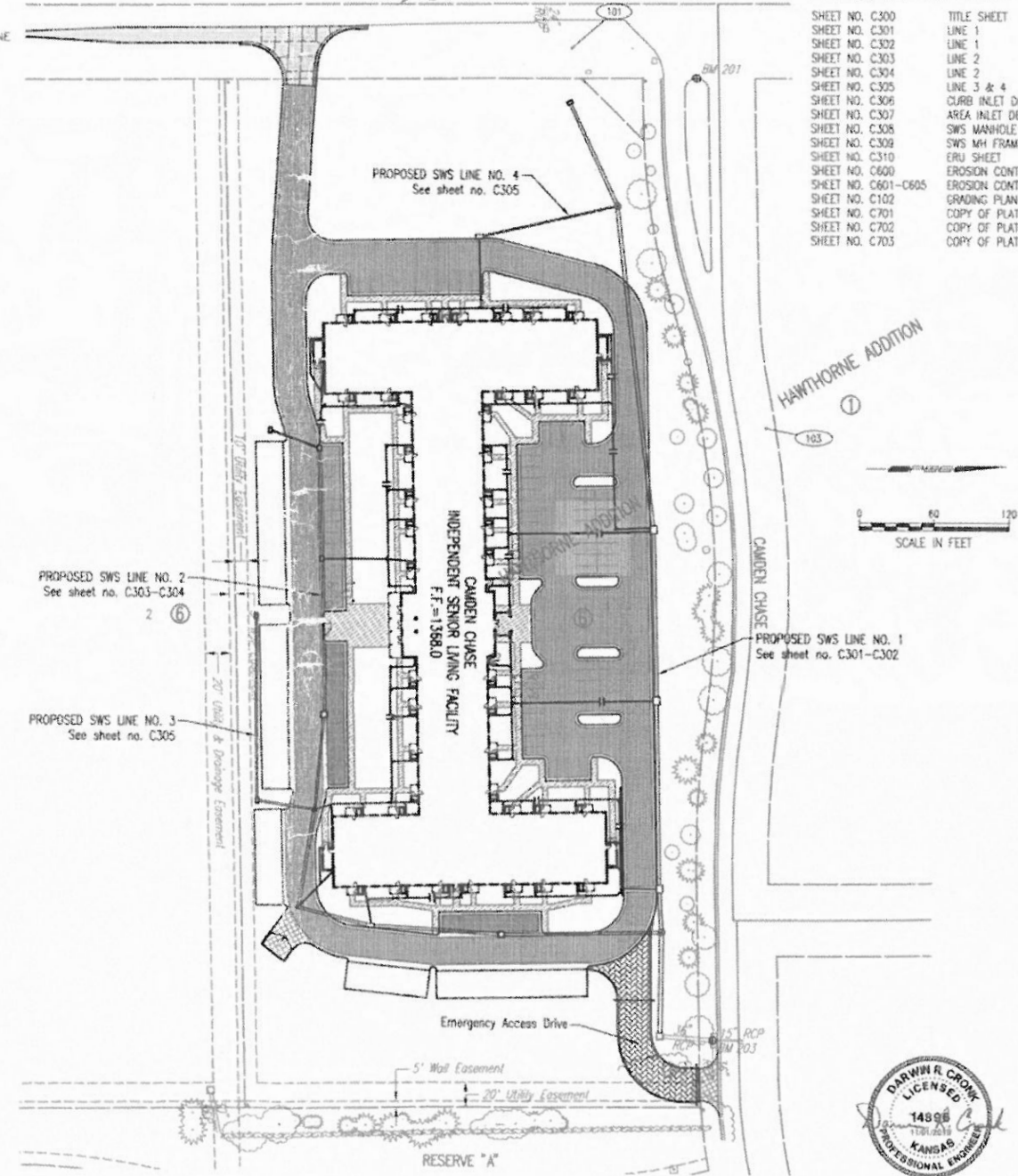
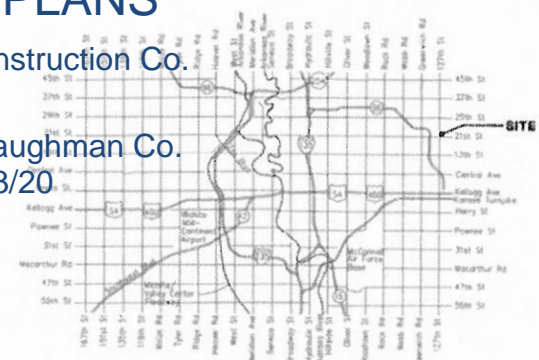
Gary Janzen, P.E. City Engineer

Project Number
607 PPD (133119)

SHEET INDEX

SHEET NO.	TITLE SHEET
SHEET NO. C300	LINE 1
SHEET NO. C301	LINE 1
SHEET NO. C302	LINE 2
SHEET NO. C303	LINE 2
SHEET NO. C304	LINE 3 & 4
SHEET NO. C305	CURB INLET DETAILS
SHEET NO. C306	AREA INLET DETAILS
SHEET NO. C307	SWS MANHOLE DETAILS
SHEET NO. C308	SWS MH FRAME AND COVER DETAILS
SHEET NO. C309	ERU SHEET
SHEET NO. C310	EROSION CONTROL PLAN
SHEET NO. C600	EROSION CONTROL BMP DETAILS
SHEET NO. C601-C605	GRADING PLAN
SHEET NO. C102	COPY OF PLAT
SHEET NO. C701	COPY OF PLAT
SHEET NO. C702	COPY OF PLAT
SHEET NO. C703	COPY OF PLAT

Vicinity Map



Stormwater Certification:

New Development or Redevelopment (Circle One)

Stormwater Permit # SWD2019-0059

NOI State Permit # S-WA20-0104

NOI Federal Permit # KSR114165

These construction plans were prepared in accordance with the current Stormwater management Regulations as set forth in the City of Wichita's Stormwater Management Ordinance 16.32 and the policies/guidelines presented in the Wichita/Sedgewick County Stormwater Manual.

Site Area (Acres) = 8.0 ACRES

Disturbed Area (Acres) = 6.9 ACRES

Water Quality Treatment: Off-site BMP Program

Downstream Channel Protection: N/A

Detention: Retention Pond

The BMP used for this development is a BMP Program

APPROVED AS NOTED
BY WICHITA PUBLIC WORKS ENGINEERING AND STORMWATER DIVISION

Engineering: *Keith Gutschow* 11.1.19

Stormwater: *Joe Heffler* 11.4.19

NOTE TO CONTRACTORS

Inspection and testing for this project is to be provided by a Licensed Consulting Engineering Firm under contract with the Owner/Developer. Said inspection to be in accordance with the City of Wichita standard construction engineering practices and certified by a Licensed Professional Engineer in the state of Kansas. No work shall be performed by the Contractor without such inspection nor shall any work be commenced without written authorization by City Engineering. All Construction and Materials shall comply with the current City of Wichita Specifications and Standards and Special Provisions. (on file and available at Wichita.gov).

An approved copy of these plans signed by City staff are required on-site.



November 2019

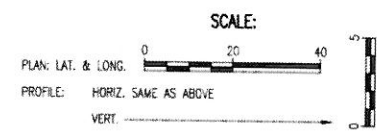
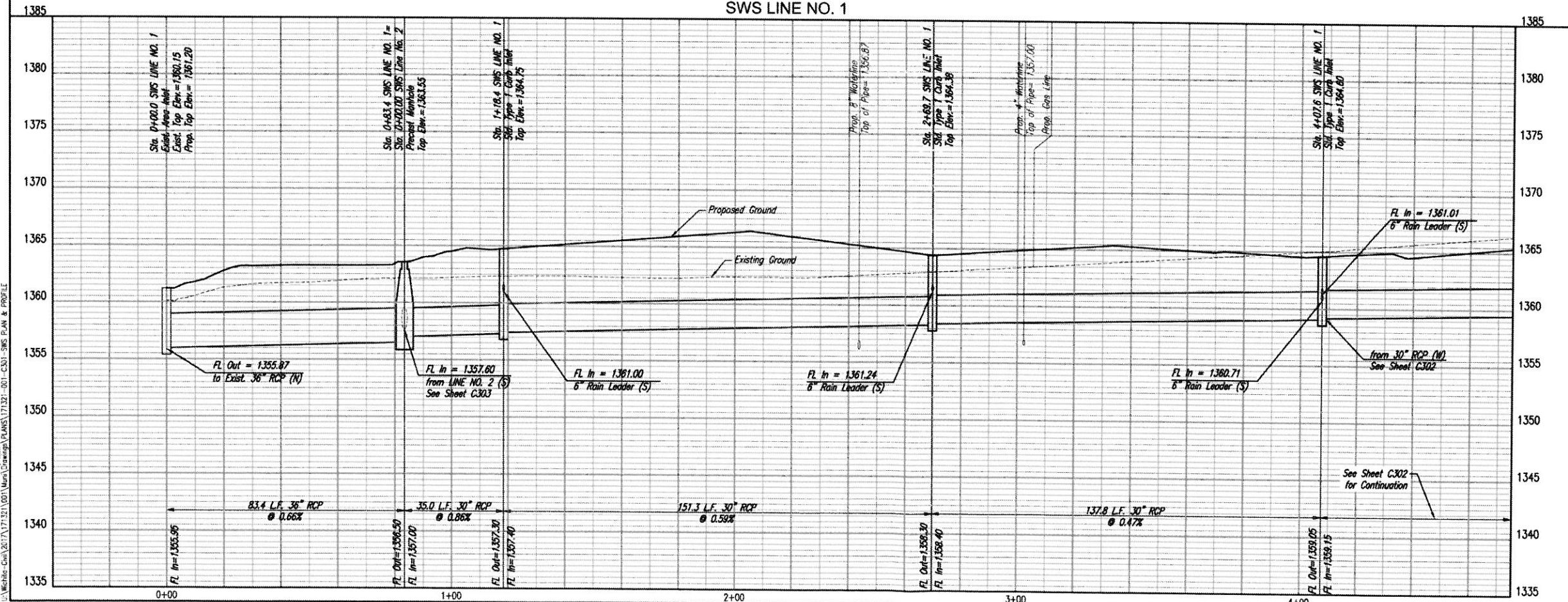
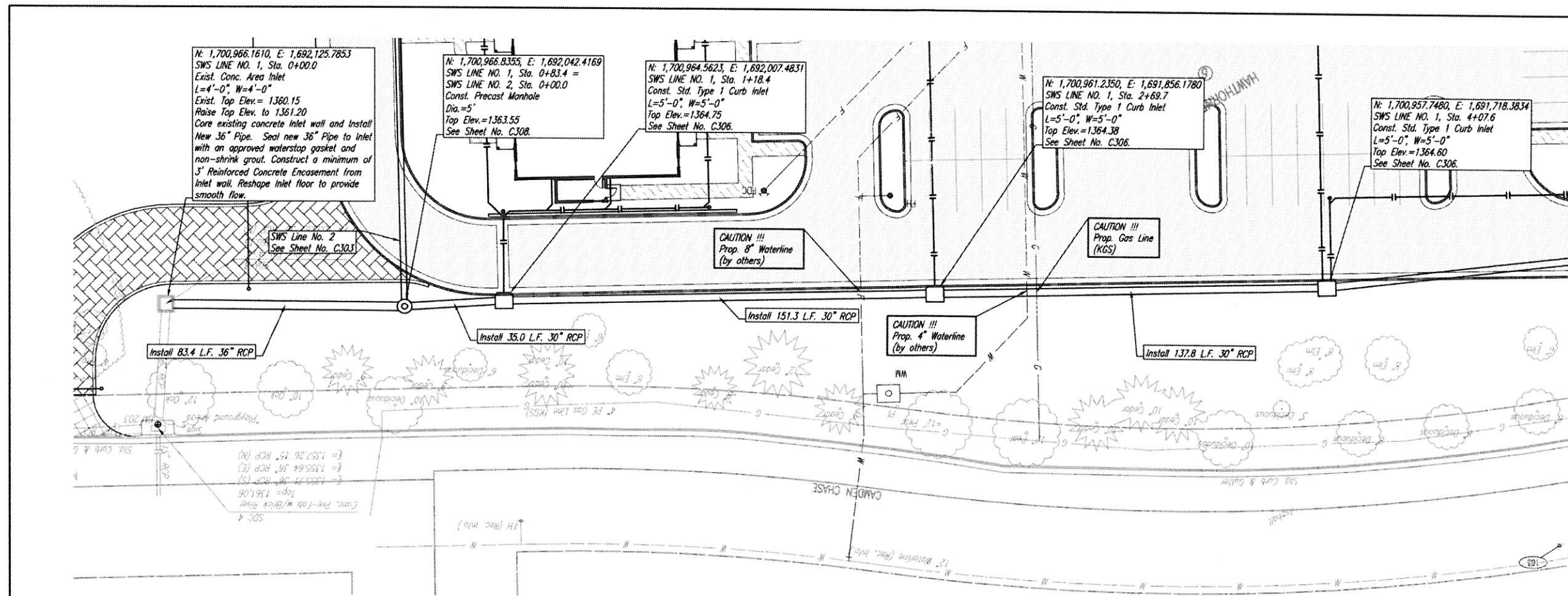
PEC PROFESSIONAL ENGINEERING CONSULTANTS, P.A.
303 SOUTH TOPEKA WICHITA, KS 67202
316-262-2691 www.pec1.com

Small vertical text at the bottom left corner, likely a revision or date stamp.

DATE	
BY	
CHECKED	
CHECKED	
PLAN	

DATE	
BY	
CHECKED	
CHECKED	
PROFILE	

Stamp: 10-31-2019 10:27:39 AM by SMO
 Plot Scale: 1" = 11'-0" (1:132) 8:08:24 AM by SMO
 U:\Projects\City\2017\17-01\17-01\001\Main\Drawings\PLANS\171321-001-C301-SWS PLAN & PROFILE



STORM WATER SEWER IMPROVEMENTS
 TO SERVE HAWTHORNE ADDITION

SWS LINE NO. 1

GARY JANZEN, P.E. - CITY ENGINEER
 CITY OF WICHITA PRIVATE PROJECT NO. 607 PFD (13119)

DESIGNED BY: DRG
 DRAWN BY: RTT

DATE: 17/1321-001
 OCTOBER 2019

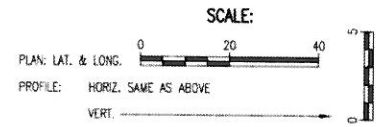
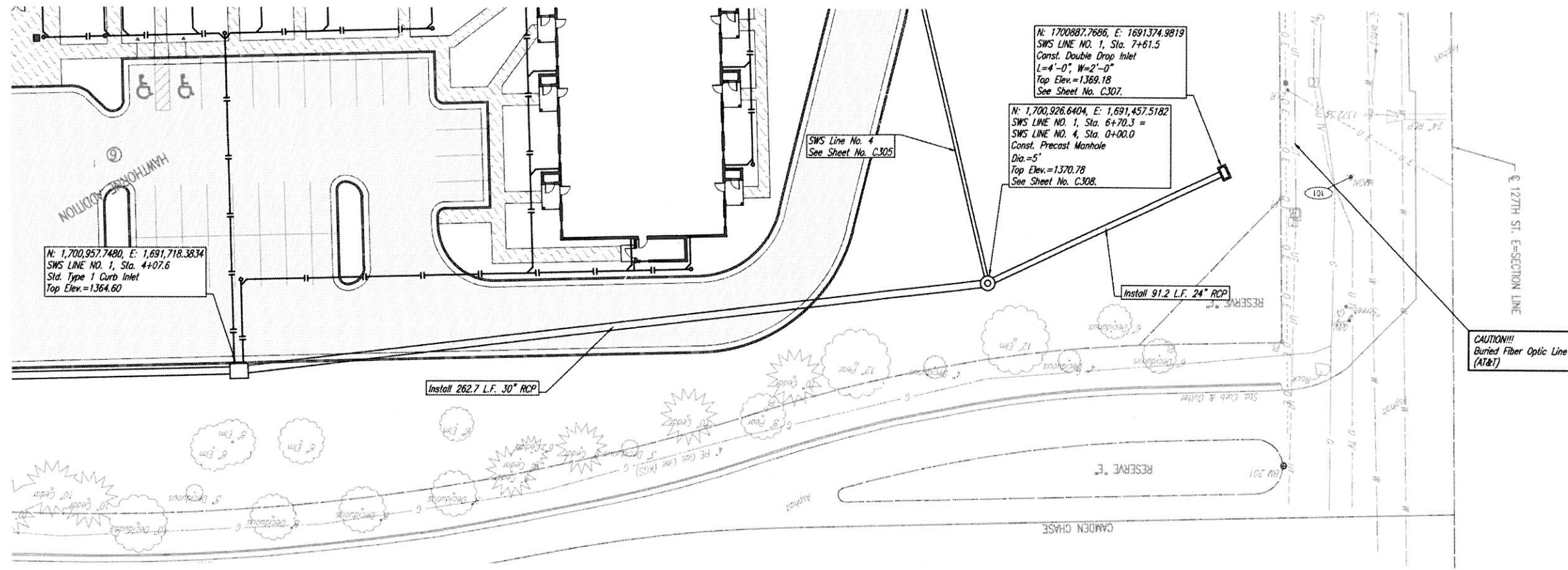
Sheet C301



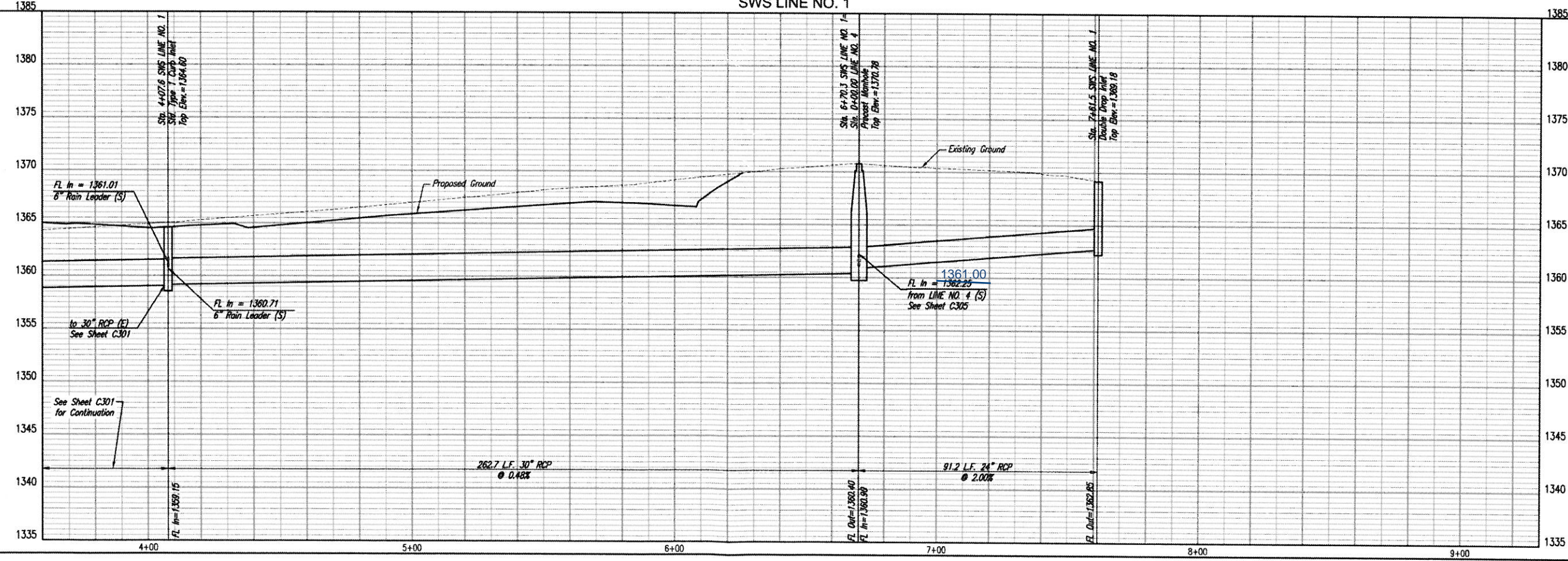
DATE	
BY	
CHECKED	
CHECKED	
PLAN	

DATE	
BY	
CHECKED	
CHECKED	
PROFILE	

Saved: 11-01-2019 8:03:25 AM by SJD
 Plot: Scale: 1:1 11-01-2019 8:08:39 AM by SJD
 C:\Wichita-Civ\2017\171321\001\Main\Drawings\PLANS\171321-001-C302-SWS PLAN & PROFILE



SWS LINE NO. 1



1385
 1380
 1375
 1370
 1365
 1360
 1355
 1350
 1345
 1340
 1335

4+00 5+00 6+00 7+00 8+00 9+00

STORM WATER SEWER IMPROVEMENTS
 TO SERVE HAWTHORNE ADDITION
SWS LINE NO. 1
 GARY JANZEN, P.E. - CITY ENGINEER
 CITY OF WICHITA PRIVATE PROJECT NO. 607 PPD (1331-9)

PEPC
 PROFESSIONAL ENGINEERING CONSULTANTS P.A.
 303 SOUTH TOPEKA WICHITA, KS 67222
 316-262-2651 www.pec.com

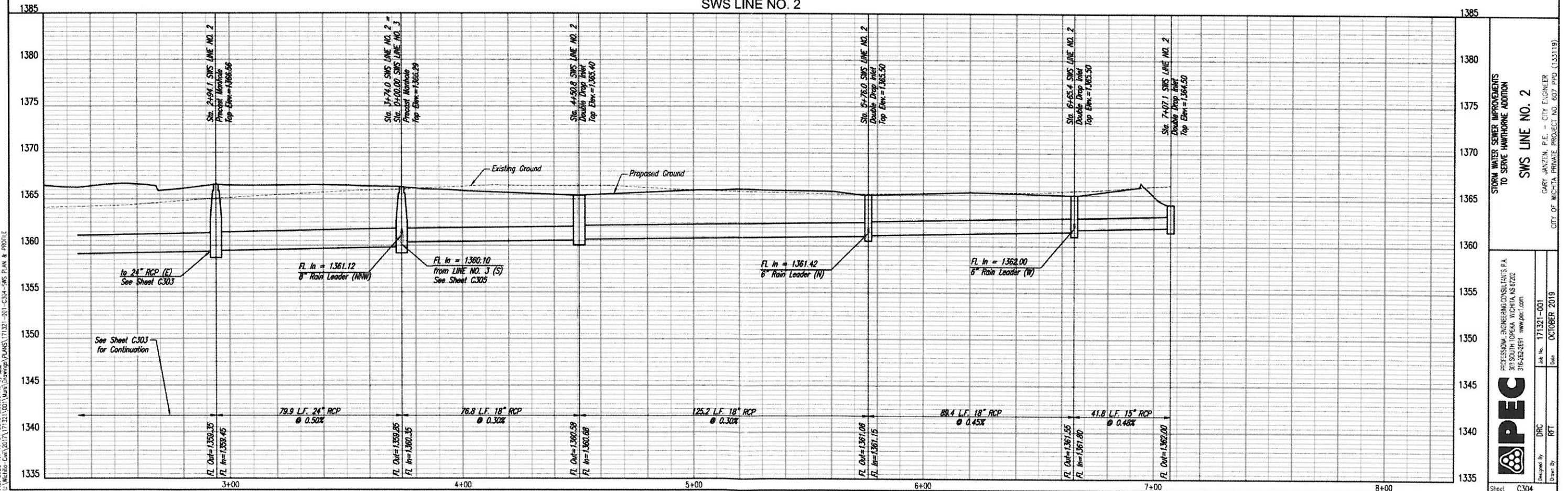
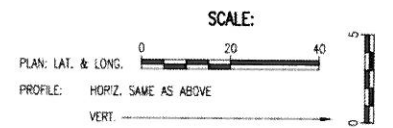
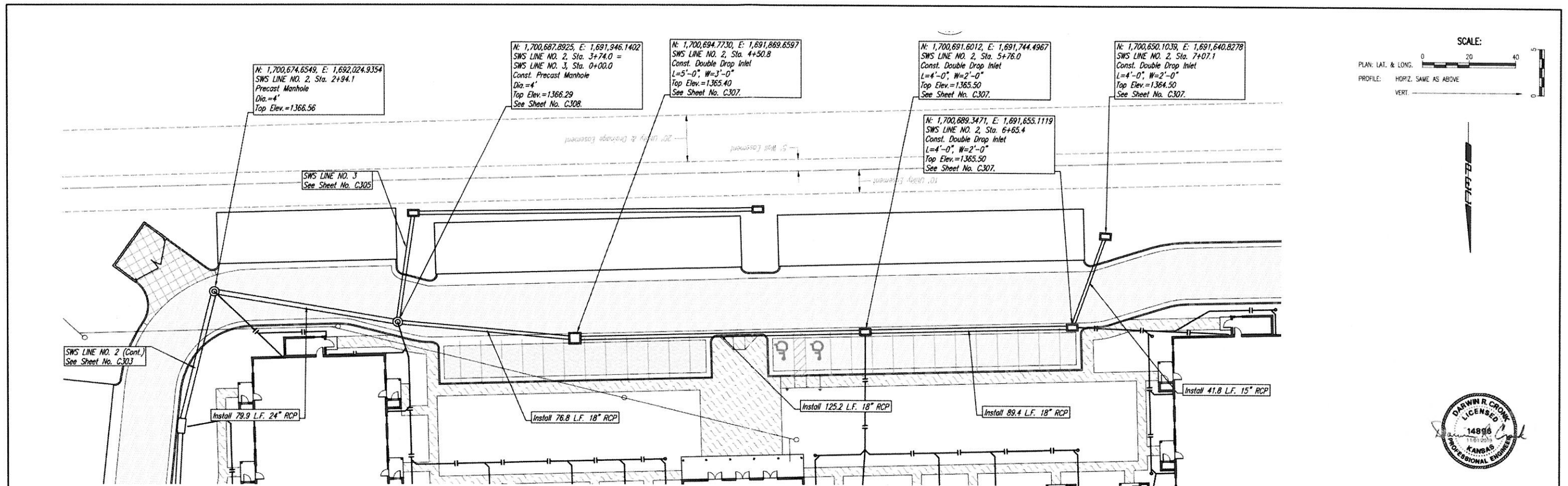
Drawn By: DRG
 Job No: 171321-001
 Date: OCTOBER 2019
 Design By: RBT

Sheet C302

DATE	
BY	
CHECKED	
CHECKED	
PLAN	

DATE	
BY	
CHECKED	
CHECKED	
PROFILE	

Sheet 10-31-2019 2:45:06 PM by SJD
 Plot Scale 1:1 - 10/1/2019 8:09:08 AM by SJD
 U:\Working-Cad\2017\171321\001\Main\Drawings\PLANS\171321-001-C304-SWS PLAN & PROFILE



STORM WATER SEWER IMPROVEMENTS TO SERVE HAWTHORNE ADDITION

SWS LINE NO. 2

GARY JANZEN, P.E., CITY ENGINEER
 CITY OF WICHITA, PRIVATE PROJECT NO. 607 PPD (133119)

PROFESSIONAL ENGINEERING CONSULTANTS P.A.
 315 SOUTH TOPKAWA WICHITA, KS 67202
 316-262-2851 www.perc.com

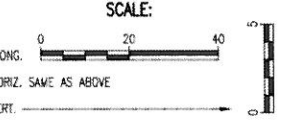
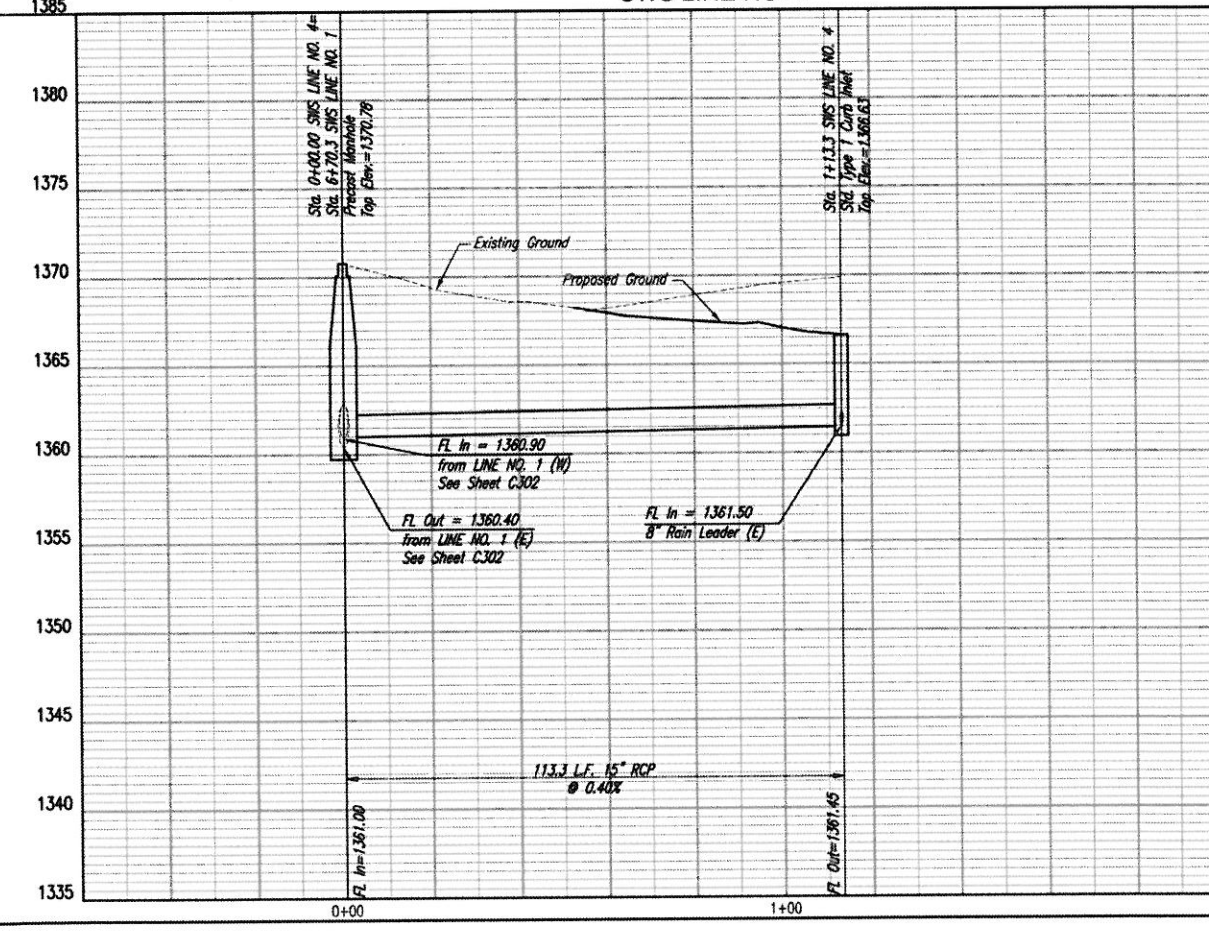
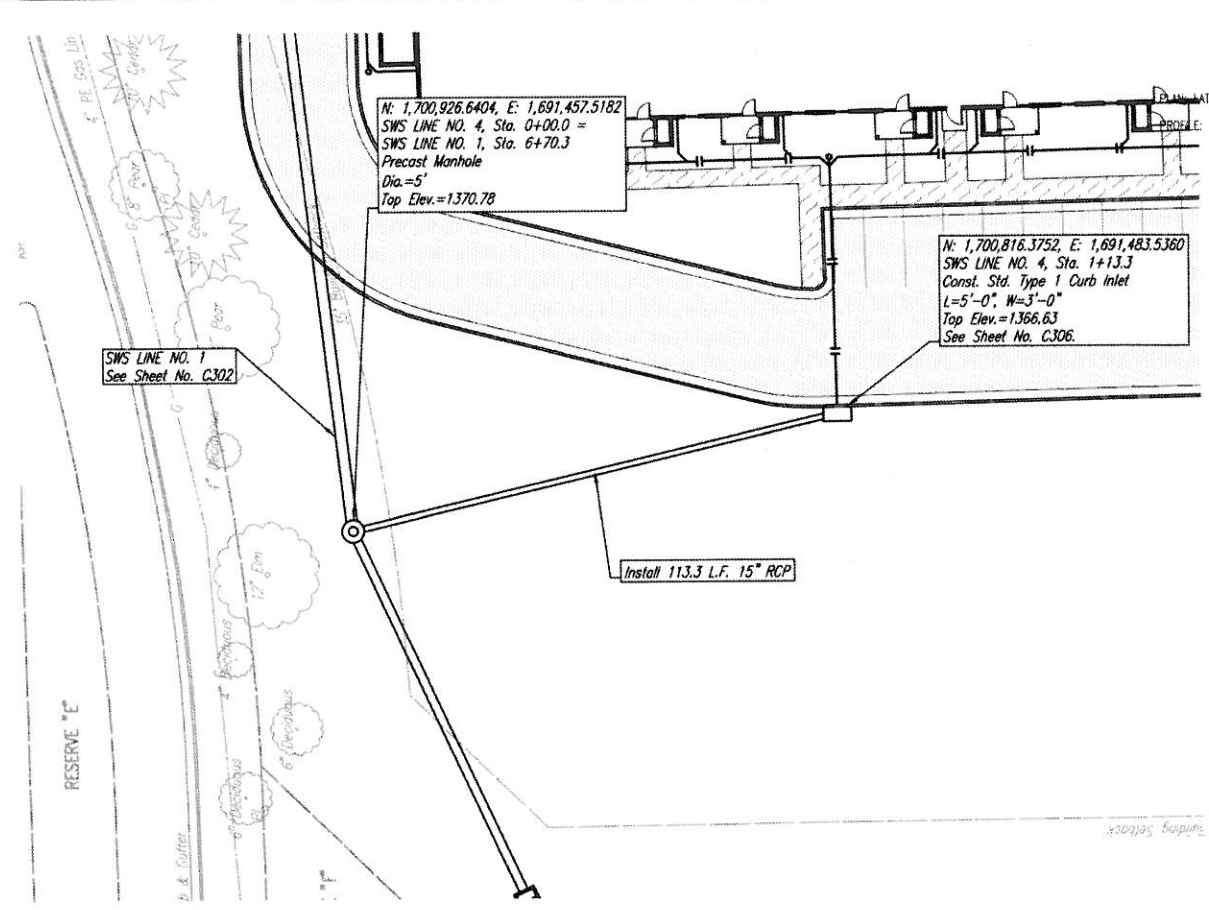
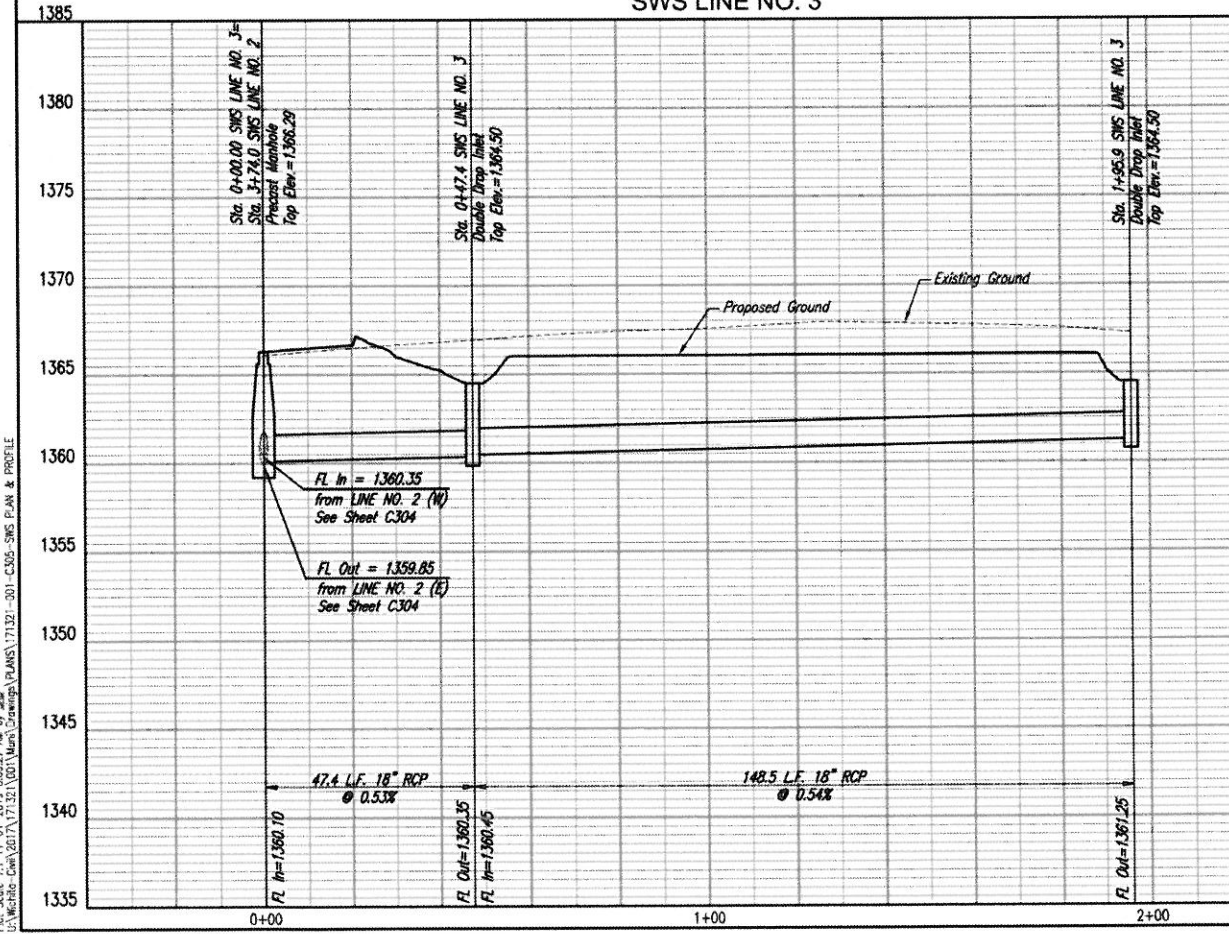
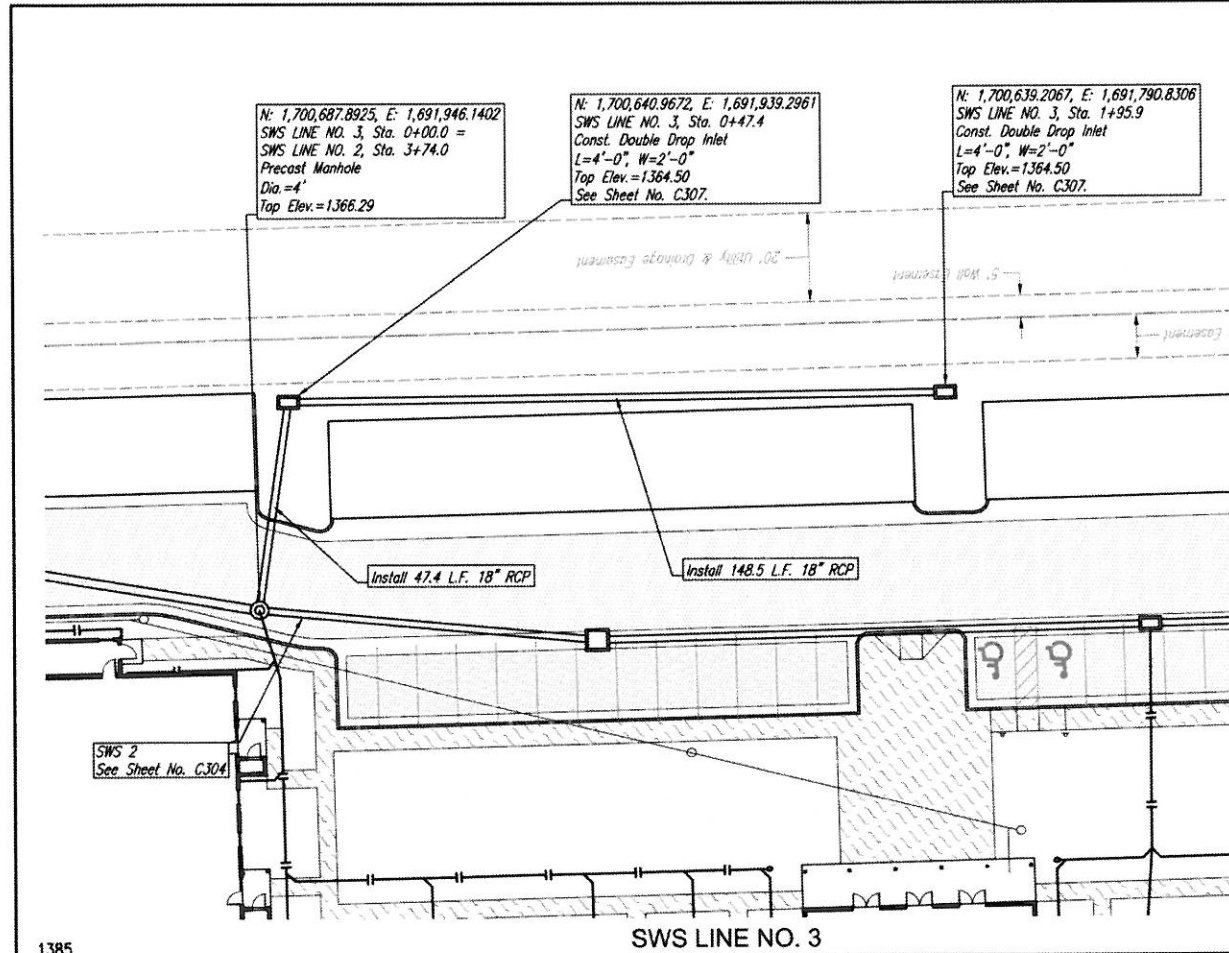
Drawn By: DRG
 Checked By: RFT
 Job No. 171321-001
 Date: OCTOBER, 2019

Sheet C304

DATE
BY
CHECKED
CHECKED
PLAN

DATE
BY
CHECKED
CHECKED
PROFILE

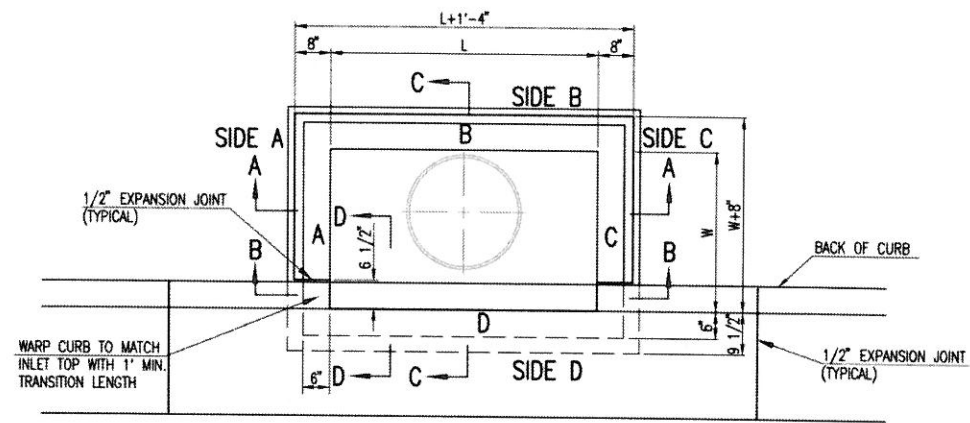
Sheet 10 of 11 - 10/19/2019 8:26:44 AM by GAD
 File Scale 1:1 11/11/2019 8:09:27 AM by GAD
 User: gads - C:\Users\GAD\Documents\Drawings\PLANS\171321-001-C305-SWS PLAN & PROFILE



PROFESSIONAL ENGINEERING CONSULTANTS P.A.
 303 SOUTH DOCKAWA WICHITA, KS 67222
 316-262-2511 www.ppec.com

Storm Water Sewer Improvements
 to Serve Hamthorne Addition
 SWS LINE NO. 3 AND 4

Drawn By: DRG
 Checked By: RFT
 Job No.: 171321-001
 Date: OCTOBER 2019
 City of Wichita Private Project No. 607 PPD (133119)
 Gary Janzen, P.E. - City Engineer



TOP VIEW

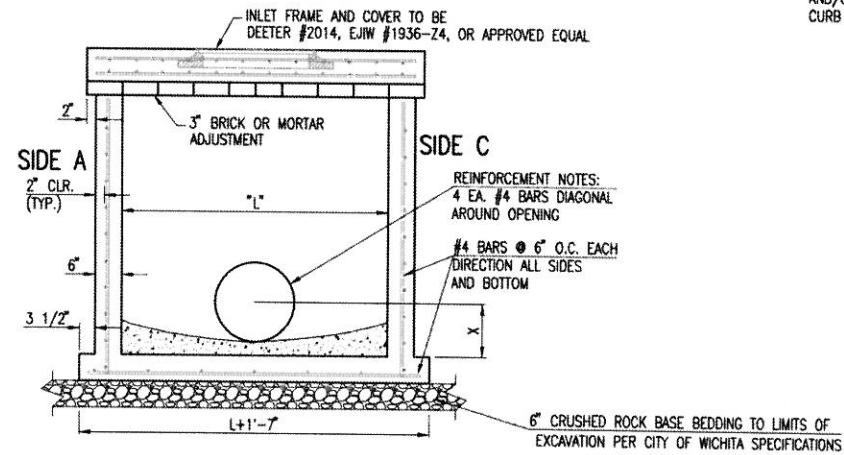
BAR SCHEDULE		
INLET OPENING	B1 BARS	SPACING
5'-0"	#4	4"
10'-0"	#6	3.5"

PRECAST CURB INLET WIDTHS				
W	PRE-CAST TOP SIZE			PIPE DIA.**
	WIDTH	LENGTH	TOP	
3'-0"	W+8"	L+1'-4"	7 1/2"	21" & SMALLER
4'-0"	W+8"	L+1'-4"	7 1/2"	24" & 30"
5'-0"	W+8"	L+1'-4"	7 1/2"	36" & 42"
6'-0"	W+8"	L+1'-4"	7 1/2"	48" & 54"
7'-0"	W+8"	L+1'-4"	7 1/2"	60" & 66"

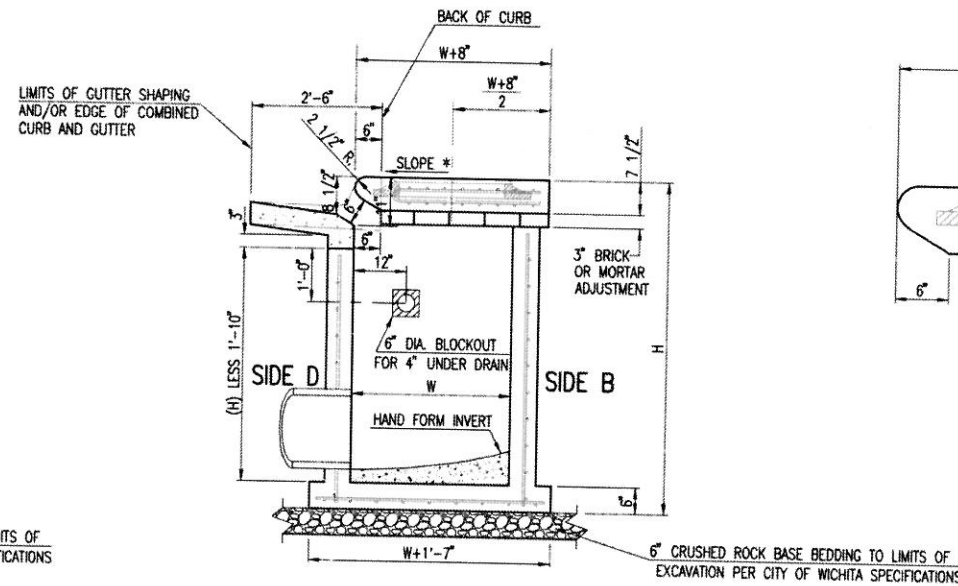
** FOR PIPES PERPENDICULAR TO INLET WALL

GENERAL NOTES

- CONCRETE TOPS TO BE INSTALLED ON THIN MORTAR CUSHION TO INSURE FULL SUPPORT ALONG BRICK. CONCRETE TOPS MAY BE CAST IN PLACE OR PRECAST. CONCRETE USED FOR INLET CONSTRUCTION SHALL CONFORM TO CITY OF WICHITA SPECIFICATIONS FOR CONCRETE PAVEMENT MIX.
- CONTRACTOR SHALL HAVE THE OPTION OF CONSTRUCTING 8" BRICK MASONRY WALLS BETWEEN THE CONCRETE INLET BASE AND TOP OF THIS INLET WHEN W=5'-0" AND H=7'-0" OR LESS.
- INLET INVERT SHALL BE SHAPED WITH 8 SACK SAND MIX CONCRETE TO CREATE FLOW CHANNELS AND TO INCREASE HYDRAULIC EFFICIENCY SUCH THAT THE INLET WILL BE SELF CLEANING BETWEEN ALL INLET AND/OR OUTLET PIPES.
- THE ENDS OF ALL PIPES INSTALLED IN INLETS SHALL BE CUT OFF FLUSH WITH THE INSIDE FACE OF THE INLET WALL.
- INLET FRAME AND COVER TO BE DEETER #2014, EJIW #1936 Z4, OR APPROVED EQUAL, SEE SW-303.
- CONTRACTOR SHALL REMOVE LIFTING HOOKS AFTER INSTALLATION. RECESSES IN INLET WALL SHALL BE GROUTED FLUSH TO THE INLET WALL WITH HYDRAULIC CEMENT AFTER THE INLET IS IN PLACE. LIFTING HOLES THRU THE INLET WALL WILL NOT BE ACCEPTED.

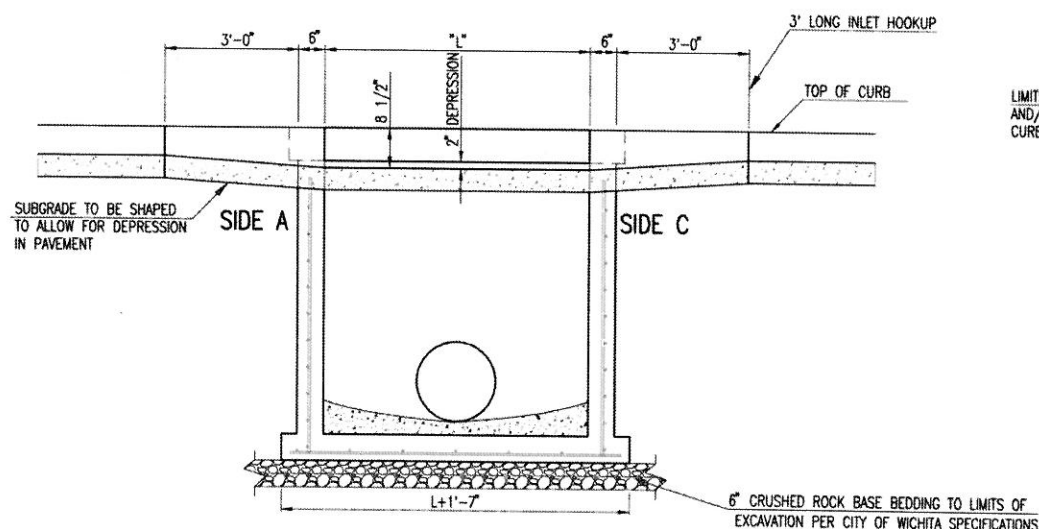
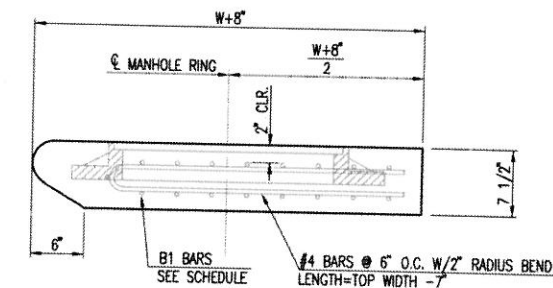


SECTION "A-A"

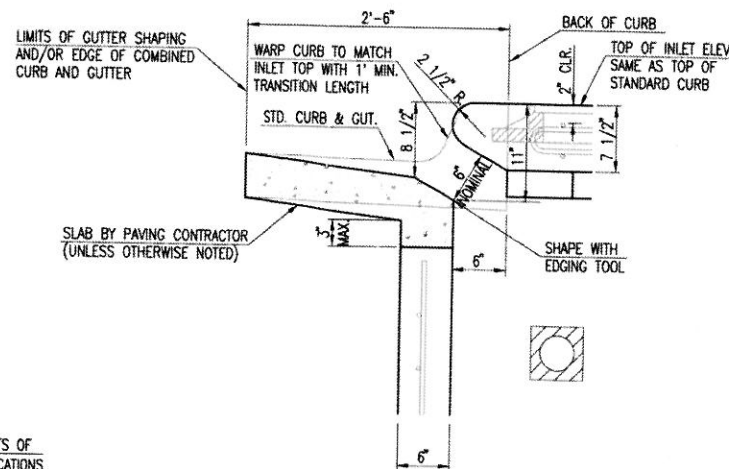


SECTION "C-C"

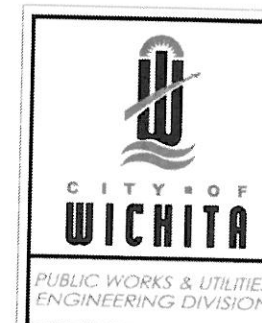
NOTES:
* SLOPE OF INLET TOP TO MATCH SIDEWALK OR PARKING SLOPES WITHIN LIMITS INDICATED.



SECTION "B-B"



SECTION "D-D"



REVISED: MARCH 2015

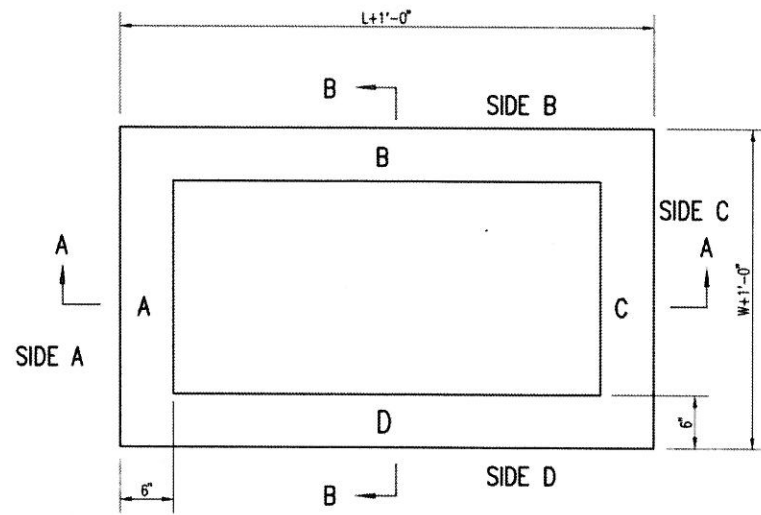
STANDARD TYPE 1 CURB INLET
5'-0" OR 10'-0" OPENING

CITY ENGINEER
GARY JANZEN, P.E.

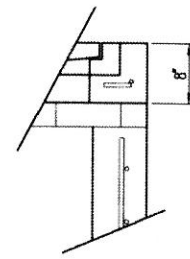
PROJECT NUMBER 607 PPD	OCA NUMBER 133119	DATE
---------------------------	----------------------	------

CITY ENGINEER'S OFFICE
CITY HALL - SEVENTH FLOOR
455 NORTH MAIN STREET
WICHITA, KANSAS 67202-1620
(316) 268-4501

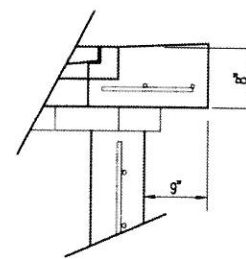
SHEET
C306



TOP VIEW

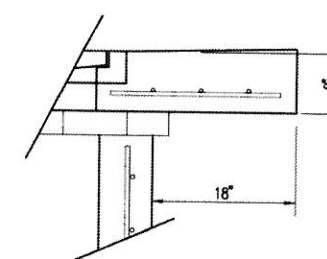


FLUSH STYLE TOP
NO APRON



9" APRON

* APRON TO EXTEND ON ALL 4 SIDES OF INLET.
DESIGNER TO DESIGNATE APRON SIZE.



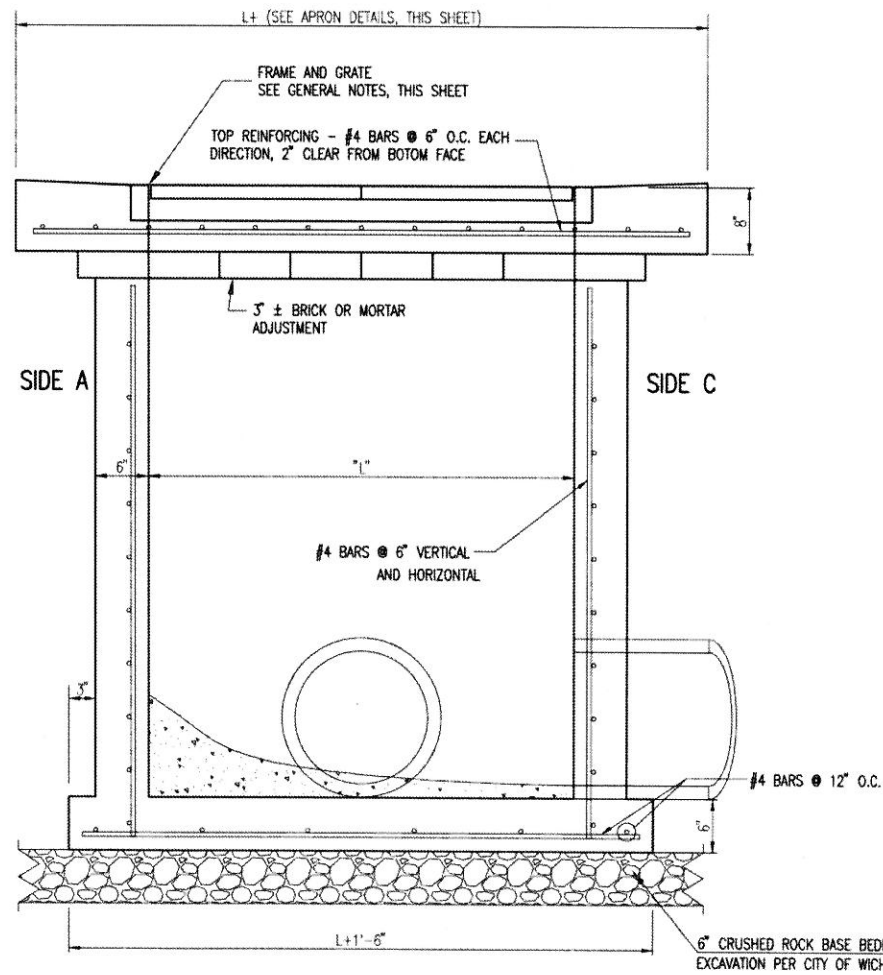
18" APRON

W=2' and L=2' for SINGLE DROP INLET
W=2' and L=4' for DOUBLE DROP INLET

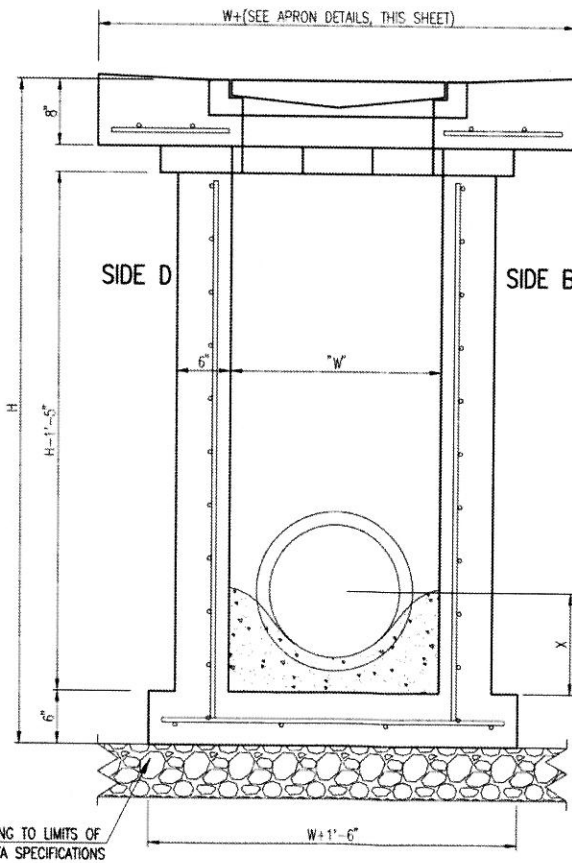
The structure(s) on this detail sheet are designed for HS-20 loading at these specific dimensions only. If larger dimensions are required, the ENGINEER shall provide a project specific structure design for approval by the City Engineer's office.

GENERAL NOTES

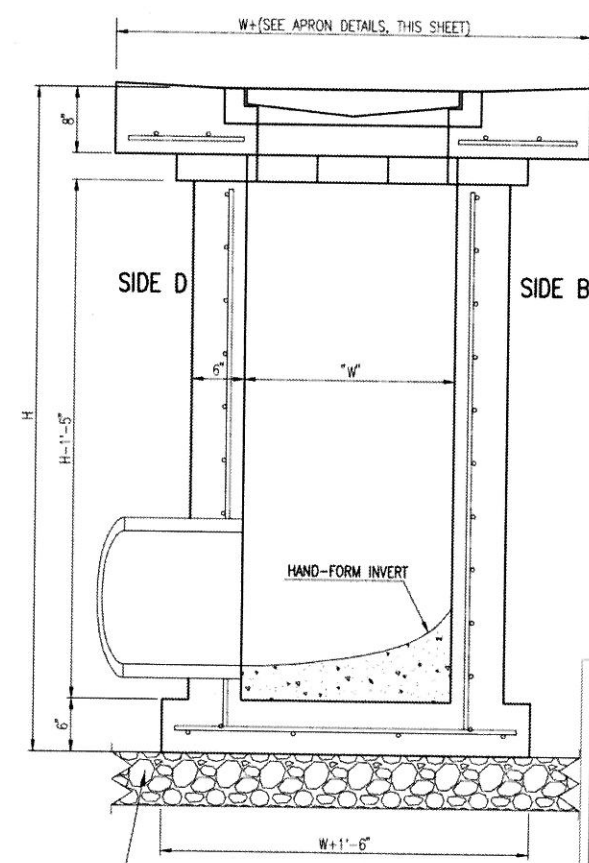
1. GRATE FRAME TO BE INSTALLED ON THIN MORTAR CUSHION TO INSURE FULL SUPPORT ALONG BRICK. CONCRETE USED FOR INLET CONSTRUCTION SHALL CONFORM TO CITY OF WICHITA SPECIFICATIONS FOR CONCRETE PAVEMENT MIX.
2. INLET INVERT SHALL BE SHAPED WITH 8 SACK SAND MIX CONCRETE TO CREATE FLOW CHANNELS AND TO INCREASE HYDRAULIC EFFICIENCY SUCH THAT THE INLET WILL BE SELF CLEANING BETWEEN ALL INLET AND/OR OUTLET PIPES.
3. THE ENDS OF ALL PIPES INSTALLED IN INLETS SHALL BE CUT OFF FLUSH WITH THE INSIDE FACE OF THE INLET WALL.
4. INLET FRAME AND GRATE TO BE DEETER #2433, EJM #5391-Z1 OR APPROVED EQUAL FOR 2'x2' SINGLE DROP INLET AND DEETER #2434, EJM #5391 Z3 OR APPROVED EQUAL FOR 2'x4' DOUBLE DROP INLET.
5. CONTRACTOR SHALL REMOVE LIFTING HOOKS AFTER INSTALLATION. RECESSES IN INLET WALL SHALL BE GROUDED FLUSH TO THE INLET WALL WITH HYDRAULIC CEMENT AFTER THE INLET IS IN PLACE. LIFTING HOLES THRU THE INLET WALL WILL NOT BE ACCEPTED.



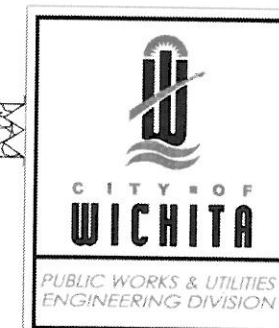
SECTION "A-A"



SECTION "B-B"
END OUTLET



SECTION "B-B"
SIDE OUTLET

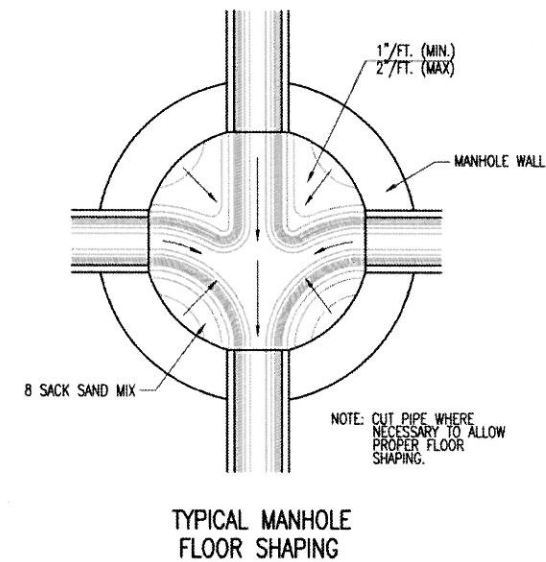
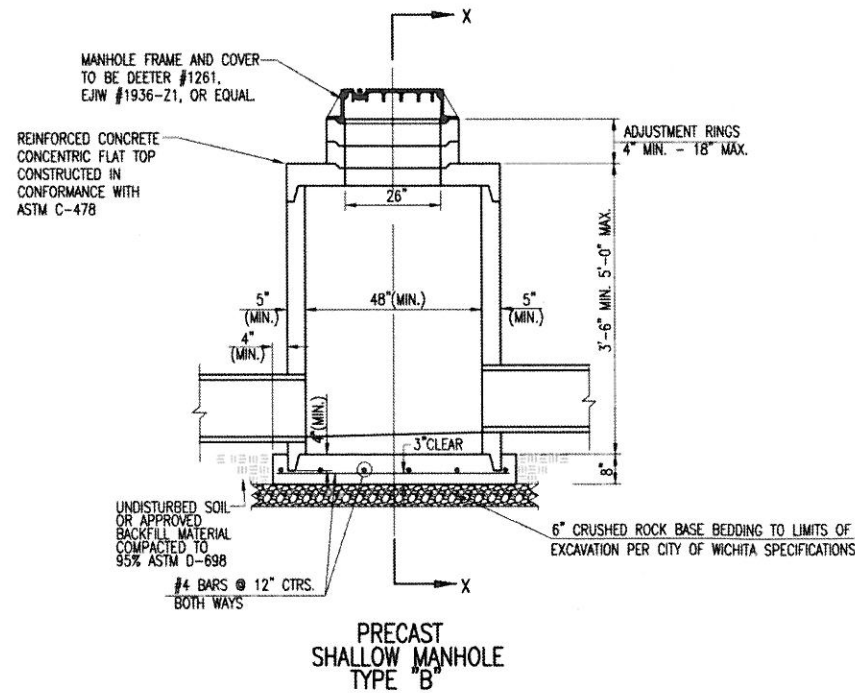
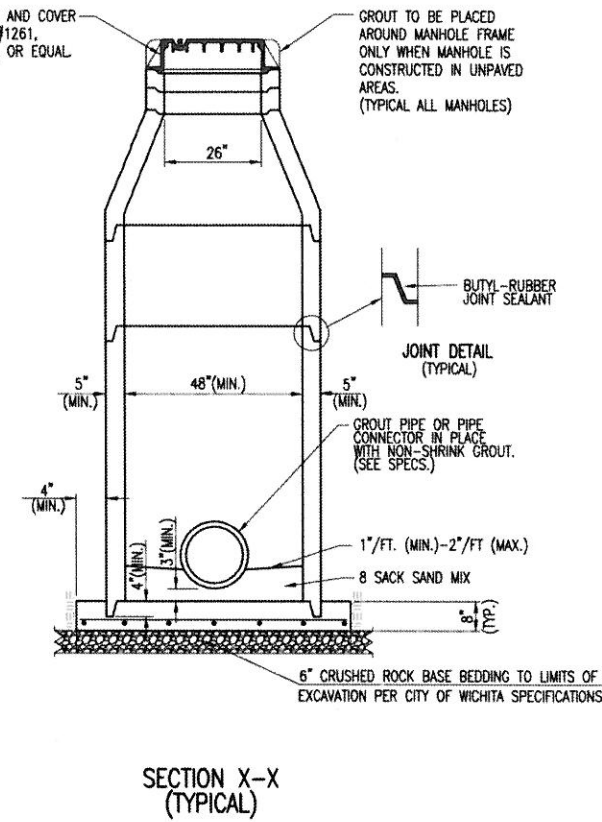
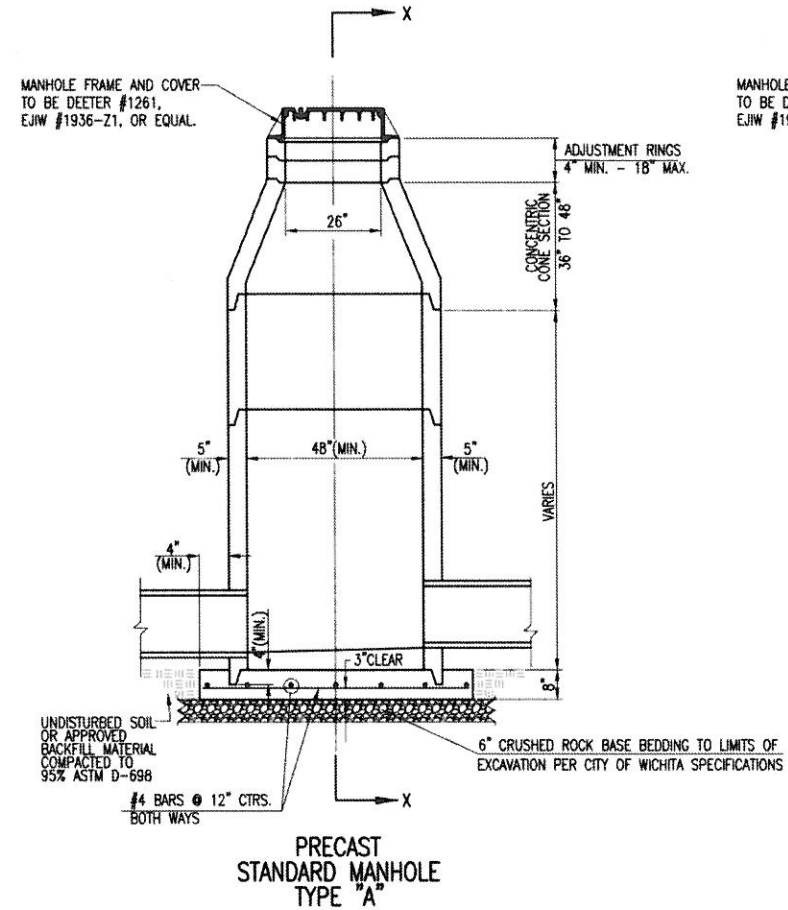


REVISED: MARCH 2015

SINGLE/DOUBLE DROP INLET

CITY ENGINEER
GARY JANZEN, P.E.

PROJECT NUMBER 607 PPD	DCA NUMBER 133119	DATE
CITY ENGINEER'S OFFICE CITY HALL - SEVENTH FLOOR 455 NORTH MAIN STREET WICHITA, KANSAS 67202-1620 (316) 268-4501		SHEET C307



GENERAL NOTES

- IF, IN THE OPINION OF THE ENGINEER, THE MANHOLE SUBGRADE APPEARS UNSTABLE, THE CONTRACTOR WILL HAVE THE OPTION TO COMPACT SUBGRADE AS SHOWN OR INCREASE THE THICKNESS OF THE MANHOLE BASE AS DIRECTED BY THE ENGINEER.
- STEEL REINFORCING WILL BE REQUIRED IN ALL MANHOLE BASES.
- ALL MANHOLE CONSTRUCTION SHALL BE WATER TIGHT.
- TOP OF MANHOLE FLOOR SLAB SHALL BE AT LEAST 3 INCHES BELOW THE FLOW LINE OF THE OUTLET PIPE TO INSURE SUFFICIENT MINIMUM THICKNESS OF SHAPED INVERT.
- ALL PRECAST CONCRETE MANHOLE SECTIONS SHALL CONFORM TO THE LATEST REVISION OF ASTM C-478 AS MODIFIED BY THE SPECIFICATIONS.
- CONCRETE USED FOR MANHOLE CONSTRUCTION SHALL CONFORM TO CITY OF WICHITA SPECIFICATIONS FOR CONCRETE PAVEMENT MIX.
- PRECAST MANHOLES SHALL BE SET AT LEAST 4 INCHES INTO MANHOLE BASE.
- MANHOLES WITH PIPE SIZES 24" AND LARGER SHALL HAVE 5 FOOT INSIDE DIAMETER (MIN.).
- MANHOLES WITH PRECAST BASES MAY BE USED AT THE CONTRACTORS OPTION. THESE MANHOLES SHALL HAVE AN 8" MINIMUM BASE THICKNESS AND SHALL BE PLACED ON AN 8" MIN. CRUSHED ROCK BASE. PIPES SHALL BE ENCASED WITH CRUSHED ROCK TO AT LEAST 3 FEET FROM THE MANHOLE WALL.
- CONTRACTOR SHALL REMOVE LIFTING HOOKS AFTER INSTALLATION. RECESSES IN MANHOLE WALL SHALL BE GROUTED FLUSH TO THE MANHOLE WALL WITH HYDRAULIC CEMENT AFTER THE MANHOLE IS IN PLACE. LIFTING HOLES THRU THE MANHOLE WALL WILL NOT BE ACCEPTED.
- THE ENDS OF ALL PIPES IN MANHOLES SHALL BE CUT OFF FLUSH WITH THE INSIDE FACE OF THE MANHOLE WALL.
- MANHOLE INVERT SHALL BE SHAPED WITH 8 SACK SAND MIX CONCRETE TO CREATE FLOW CHANNELS AND TO INCREASE HYDRAULIC EFFICIENCY SUCH THAT THE MANHOLE WILL BE SELF CLEANING BETWEEN ALL INLET AND/OR OUTLET PIPES.
- MANHOLE FRAME AND COVER TO BE DEETER #1261, EJIW #1936-21, OR APPROVED EQUAL, SEE SW-303.
- FOR FLAT GRATED INLET APPLICATION, GRATE TO BE DEETER #1933, EJIW #1205 MDI, OR APPROVED EQUAL.
- FOR BEEHIVE GRATE APPLICATION, GRATE TO BE DEETER #4495, EJIW #120545, OR APPROVED EQUAL.

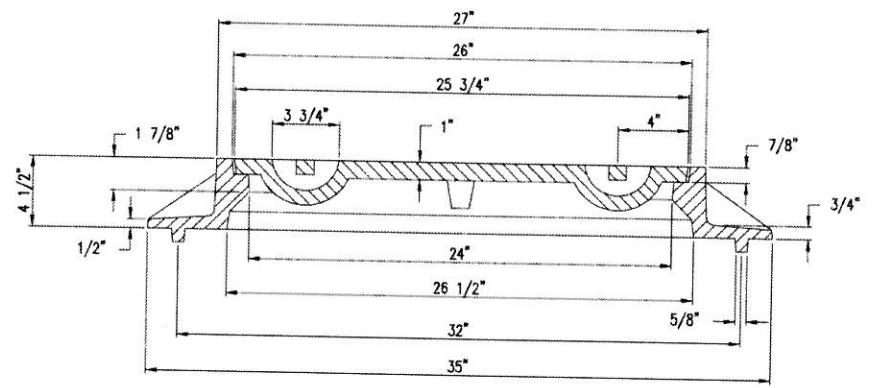
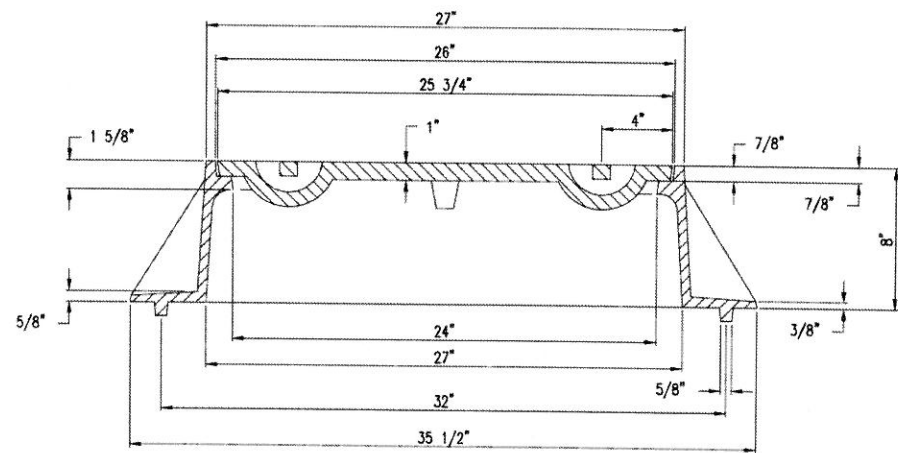
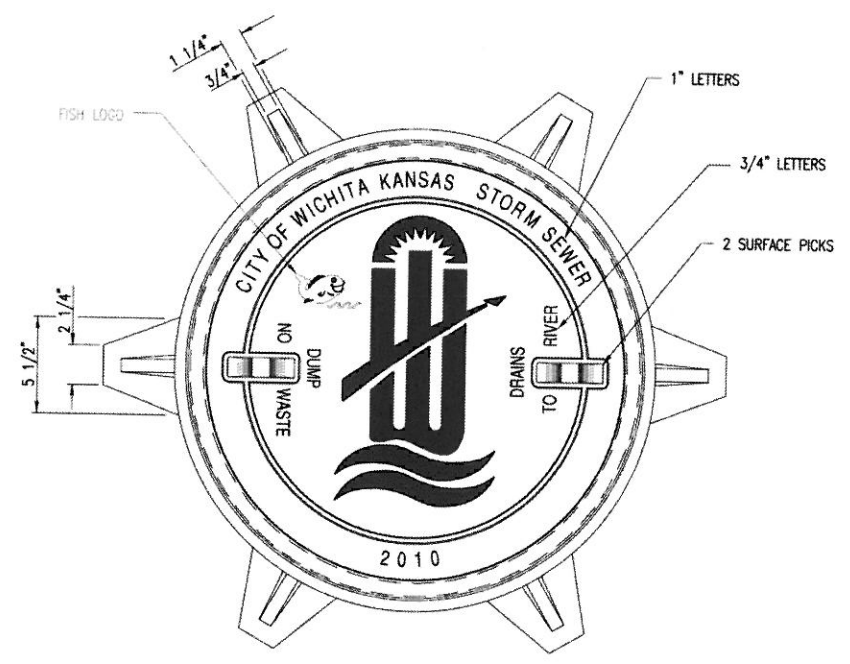
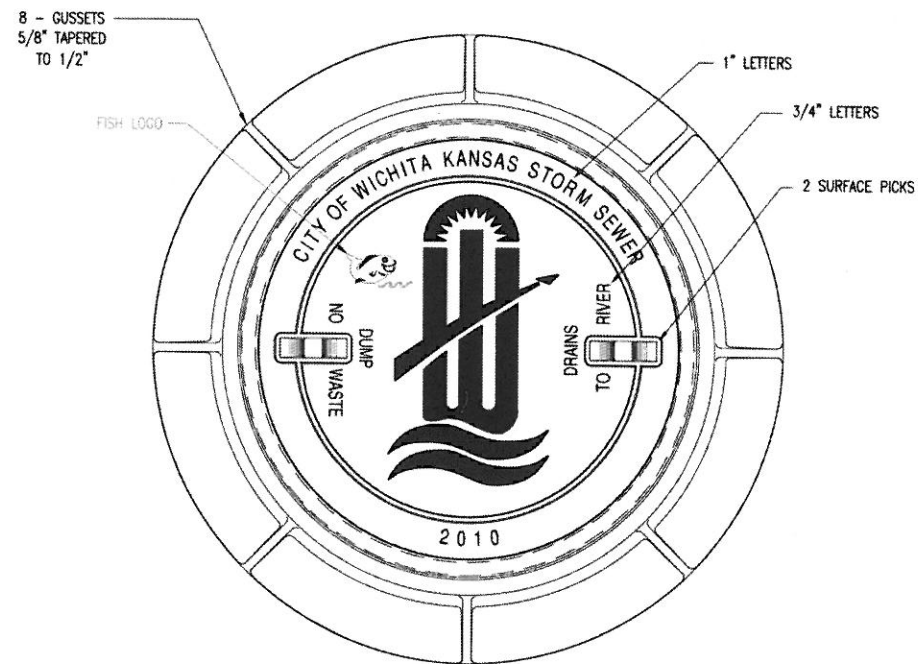


REVISED: MARCH 2015

PRECAST CONCRETE MANHOLE (STORM SEWER)

CITY ENGINEER
GARY JANZEN, P.E.

PROJECT NUMBER 607 PPD	OCA NUMBER 133119	DATE
CITY ENGINEER'S OFFICE CITY HALL - SEVENTH FLOOR 455 NORTH MAIN STREET WICHITA, KANSAS 67202-1620 (316) 268-4501		SHEET C308

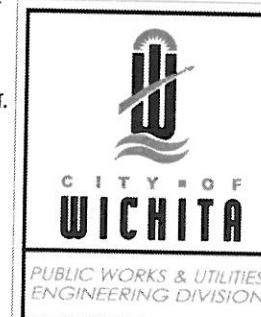


MANHOLE FRAME
DEETER #1261 OR EJIW #1936-Z1

- NOTE:
1. FURNISHED WITH MACHINED HORIZONTAL BEARING SURFACE.
 2. COVER TO BE DEETER #1261 OR EJIW #1936A.

INLET FRAME
DEETER #2014 OR EJIW #1936-Z4

- NOTE:
1. FURNISHED WITH MACHINED HORIZONTAL BEARING SURFACES.
 2. NOT TO BE USED UNDER PAVEMENT.
 3. COVER TO BE DEETER #1261 OR EJIW #1936A.



MANHOLE/INLET FRAME AND COVER (STORM SEWER)

CITY ENGINEER
GARY JANZEN, P.E.

PROJECT NUMBER 607 PPD	OCA NUMBER 133119	DATE 11/2010
---------------------------	----------------------	-----------------

CITY ENGINEER'S OFFICE
CITY HALL - SEVENTH FLOOR
455 NORTH MAIN STREET
WICHITA, KANSAS 67202-1620
(316) 268-4501

SHEET

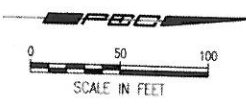
C309

☉ N. 127TH ST. E = SECTION LINE

Project Area

RES. "F"
RESERVE "E"

TOTAL PROJECT AREA = 301,672 S.F. (6.93 AC)
EXISTING IMPERVIOUS AREA = 0 S.F. (0 AC)
EXISTING PERVIOUS AREA = 301,672 S.F. (6.93 AC)



HAWTHORNE ADDITION
⑦

HAWTHORNE ADDITION
⑥

CAMDEN CHASE

RESERVE "D"

RESERVE "C"

RESERVE "A"


5' Wall Easement
20' Utility & Drainage Easement

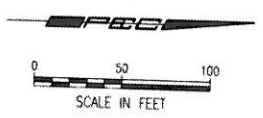
⑥

Saved: 10-20-2019 05:17 AM by CAE
 User: CAE
 Path: C:\Users\CAE\AppData\Local\Temp\Drawings\PLANS\171321-01-C310-PRJ-SHEET

Project Area

RES. "F"

LEGEND
 - PROPOSED IMPERVIOUS AREA
 TOTAL PROJECT AREA = 301,672 S.F. (6.93 AC)
 PROPOSED IMPERVIOUS AREA = 151,287 S.F. (3.47 AC)
 PROPOSED PERVIOUS AREA = 150,385 S.F. (3.45 AC)



HAW

CAMDEN CHASE

RESERVE "D"

RESERVE "C"

CAMDEN CHASE
INDEPENDENT
SENIOR LIVING
FACILITY
F.F. = 1398.0

Emergency Access
Grass Pavers

5' Wall Easement
20' Utility Easement

⑥

LEGAL DESCRIPTION
 LOT 1, BLOCK 6, HAWTHORNE ADDITION,
 SEDGWICK COUNTY, KANSAS



No.	Revision	By	Date
STORM WATER SEWER IMPROVEMENTS TO SERVE HAWTHORNE ADDITION ERU SHEET GARY JANZEN, P.E. - CITY ENGINEER CITY OF WICHITA PRIVATE PROJECT NO. 607 PPD (13.11.19) IPEC PROFESSIONAL ENGINEERING CONSULTANTS, P.A. 303 SOUTH TOPEKA WICHITA, KS 67202 316-262-2691 www.pec1.com			
Designed by	DRC	Job No.	171321-001
Drawn by	RFT	Date	OCTOBER 2019
			Sht. C310