

4MC-027

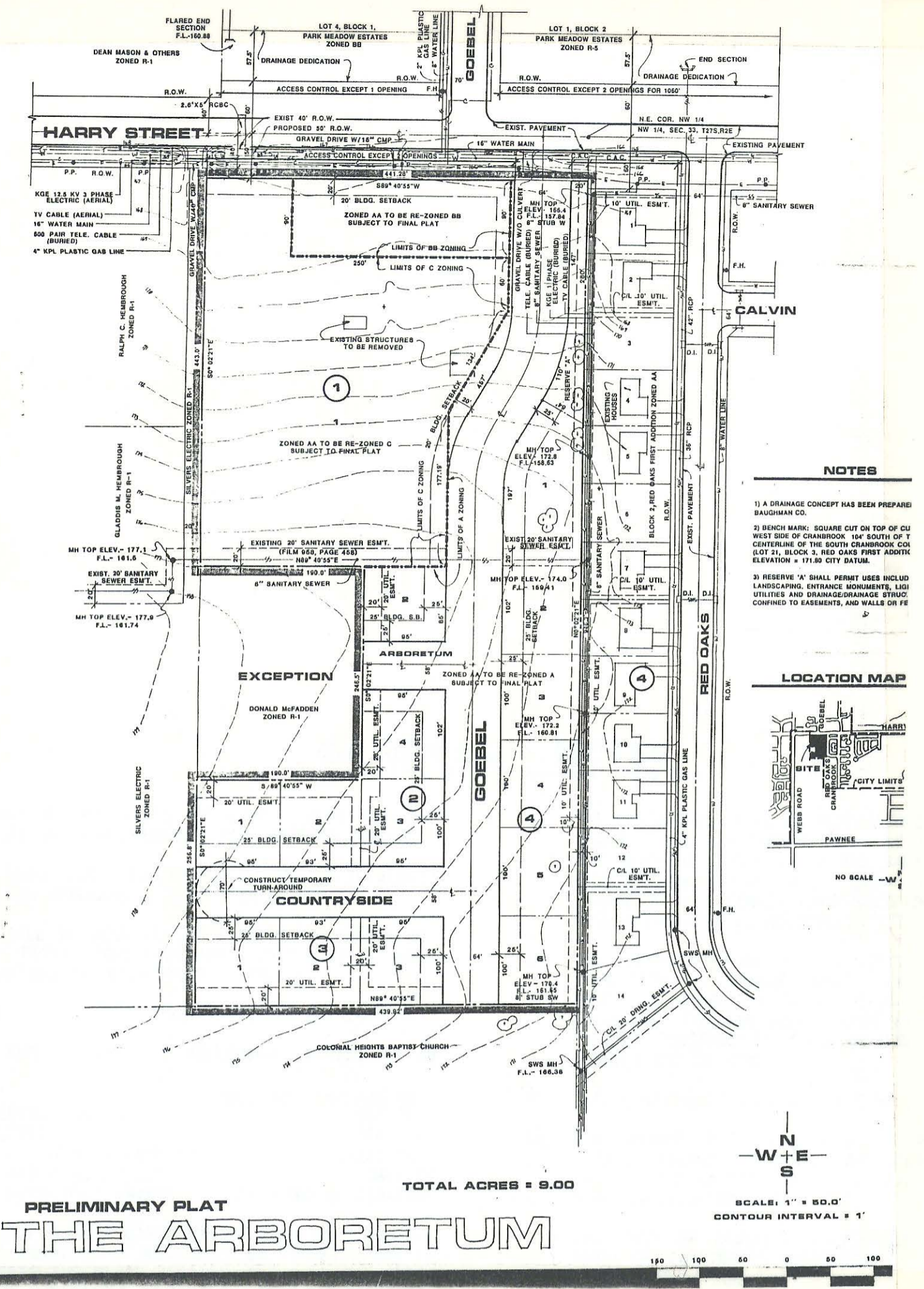
# SANITARY SEWER EXTENSION WEBB ROAD ADDITION SEDGWICK COUNTY, KANSAS

SEDGWICK COUNTY  
BUREAU OF PUBLIC SERVICES  
1233 S. Jackson, Wichita, Kansas 67213

SUBMITTAL DATA

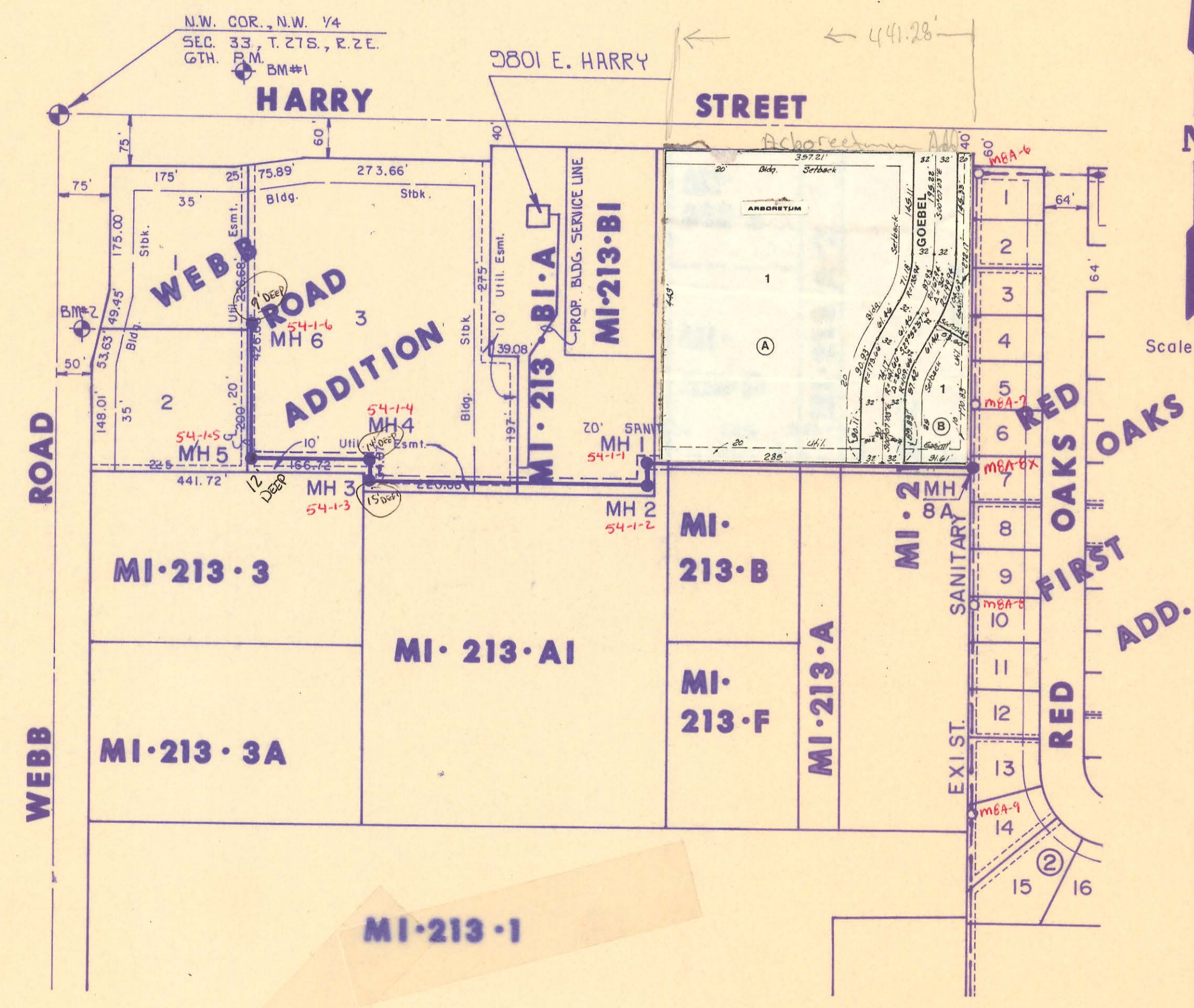
Approved For Design and arrangement  
 Approved As Noted For Design and arrangement  
 Not Approved For Design and arrangement

By: *John W. Williams* Date: 2-9-88  
Director Representative



- ALL CONSTRUCTION IN WICHITA
- THE CONSTRUCTION OPEN OVER
- THE CONSTRUCTION VANCE NOTICES PRICE
- UNDERGROUND LINES AND CONSTRUCTION ADJUSTMENTS
- THE CONTRACTOR SHALL RESTORE ALL DITCHES, CHANNELS, BANK STABILIZATION, SWALES, ROAD SHOULDERS, PAVEMENT ENTRANCES, AND BANKS TO THEIR ORIGINAL SLOPES AND GRADES. WHERE EXISTING ENTRANCE PIPE, DRAINAGE PIPE, SPRINKLER SYSTEMS, SIDEWALKS, DRIVES, SIGNS, FENCES, ETC., CONFLICT WITH THE PROPOSED WORK HEREIN THEY SHALL BE REMOVED AND REPLACED OR RESET IN LIKE KIND. ALL OF THE ABOVE INCLUDING TREES, SHRUBS, GRASS, SOD AND OTHER LANDSCAPING, WHERE NOTED SHALL BE CONSIDERED SUBSIDIARY TO THE PRICE BID FOR SITE RESTORATION.
- TREES AND SHRUBS IN THE PUBLIC RIGHT-OF-WAY WHICH ARE IN DIRECT CONFLICT WITH PROPOSED NEW CONSTRUCTION SHALL BE REMOVED BY THE CONTRACTOR WITH THE ENGINEER'S APPROVAL. TREES AND SHRUBS WHICH ARE NOT IN DIRECT CONFLICT WITH PROPOSED NEW CONSTRUCTION SHALL BE SAVED AND PROTECTED FROM DAMAGE.
- RUBBLE FROM THE REMOVAL OF MISCELLANEOUS STRUCTURES, DEBRIS AND EXCESS EXCAVATION WHICH IS TO BE WASTED SHALL BE DISPOSED OF ON SITES TO BE PROVIDED BY THE CONTRACTOR. THESE SITES SHALL BE APPROVED BY THE ENGINEER AS TO SUITABILITY, APPEARANCE AND SITE LOCATION. LOCATIONS THAT, IN THE OPINION OF THE ENGINEER, WILL LEAVE AN UNSIGHTLY APPEARANCE WILL NOT BE APPROVED.
- POSITIVE DRAINAGE SHALL BE PROVIDED FOR ALL AREAS ON OR NEAR SPOIL AREAS. NATURAL DRAINAGE WAYS SHALL BE MAINTAINED.
- WHERE REMOVAL OF EXISTING FENCES NEXT TO THE CONSTRUCTION IS DEEMED NECESSARY BY THE CONTRACTOR, THE CONTRACTOR SHALL COORDINATE REMOVAL WITH ADJACENT PROPERTY OWNERS. ALL REMOVAL AND RESETTING OF FENCES SHALL BE CONSIDERED SUBSIDIARY TO SITE PREPARATION AND SITE RESTORATION, RESPECTIVELY.

FOR PRESERVING PROPERTY OWNERS AND/OR TENANTS BY THE CONSTRUCTION OF ADVANCE NOTICE PRIOR TO AND CONCRETE CRADLES, BE PRICE BID FOR SEMER



INDEX SHEET NO.	TO DRAWINGS DESCRIPTION
1	TITLE SHEET
2-3	PLAN & PROFILE LINE 1
4	TYPE "C" MANHOLE DETAIL
5	TYPE "P" MANHOLE DETAIL
6	MANHOLE FRAME & COVER DETAIL

**BENCH MARKS**

BM #1 " " Cut On N.E. Cor. Curb Inlet On North Side Of Harry, 260' East Of C. Of Webb Road. Elev. = 1356.93 MSL

BM #2 " " Cut On S.E. Corner Of Area Inlet On East Side Of Webb Road, 304' South Of C. Of Harry. Elev. = 1360.13 MSL

4MC-027

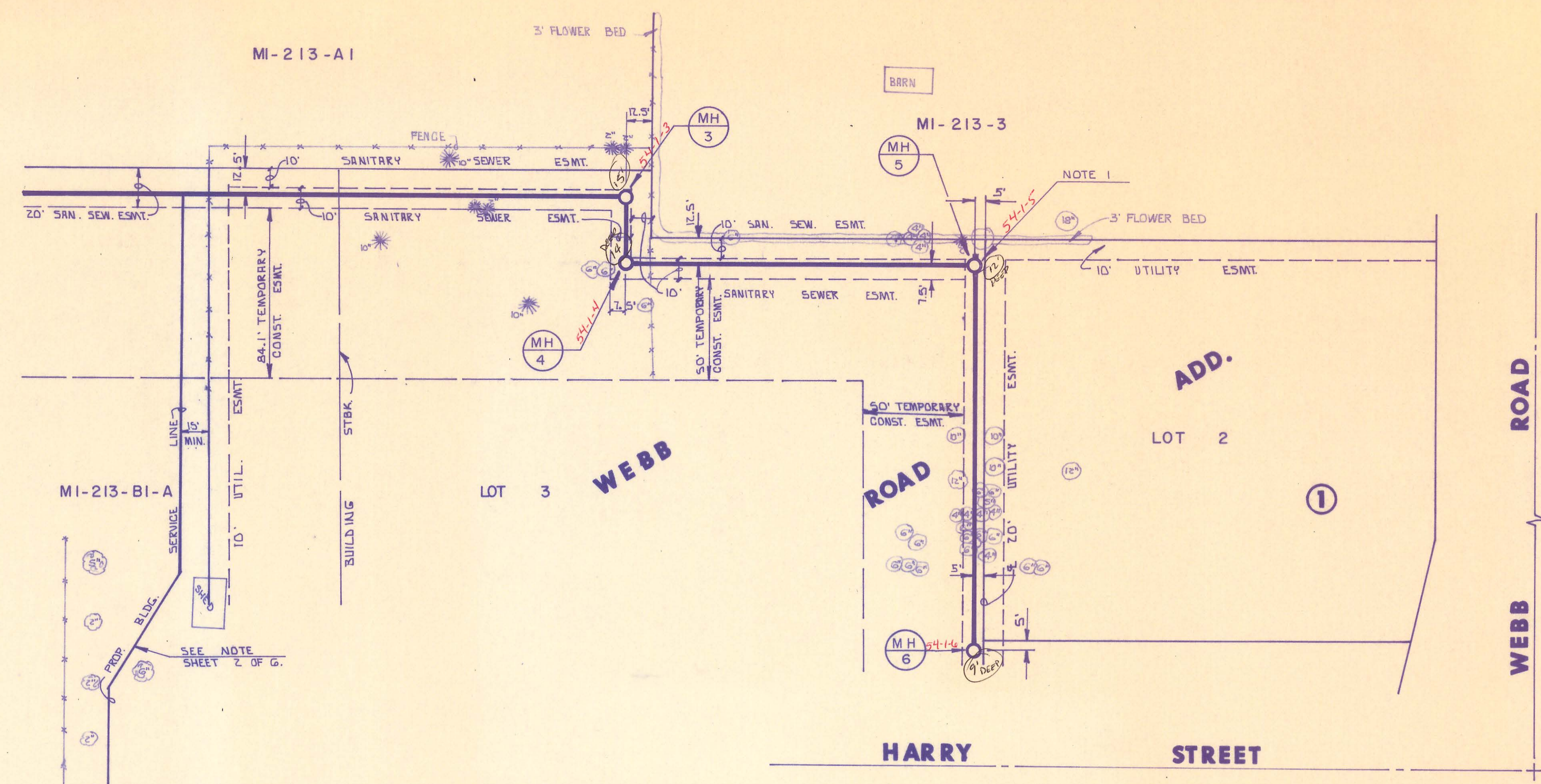
	<b>WEBB ROAD ADDITION SANITARY SEWER EXTENSION</b>	Design: DCH Drawn by: DLM Checked by:
	MID-KANSAS ENGINEERING CONSULTANTS PA 3500 NORTH ROCK ROAD BUILDING #800 WICHITA, KANSAS 67226	Date: December, 1987 Job no.





Scale: 1" = 40' Horiz.  
1" = 5' Vert.

Note:  
1. Install 8" Stubout South  
With Gasket Cap. Cost  
Subsidiary To Price Bid  
For Manhole.



PLAN LINE 1

PROFILE LINE 1

