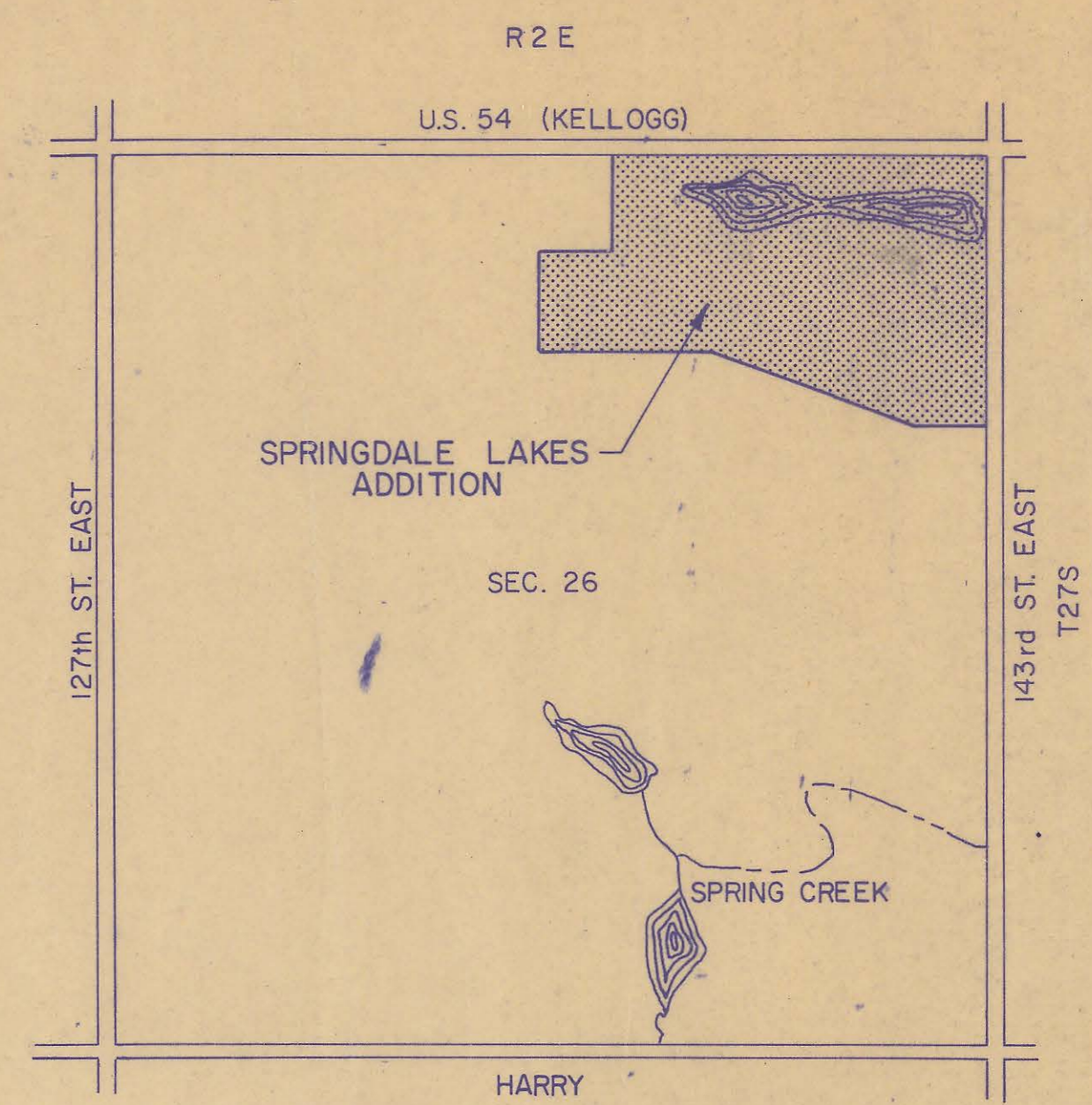
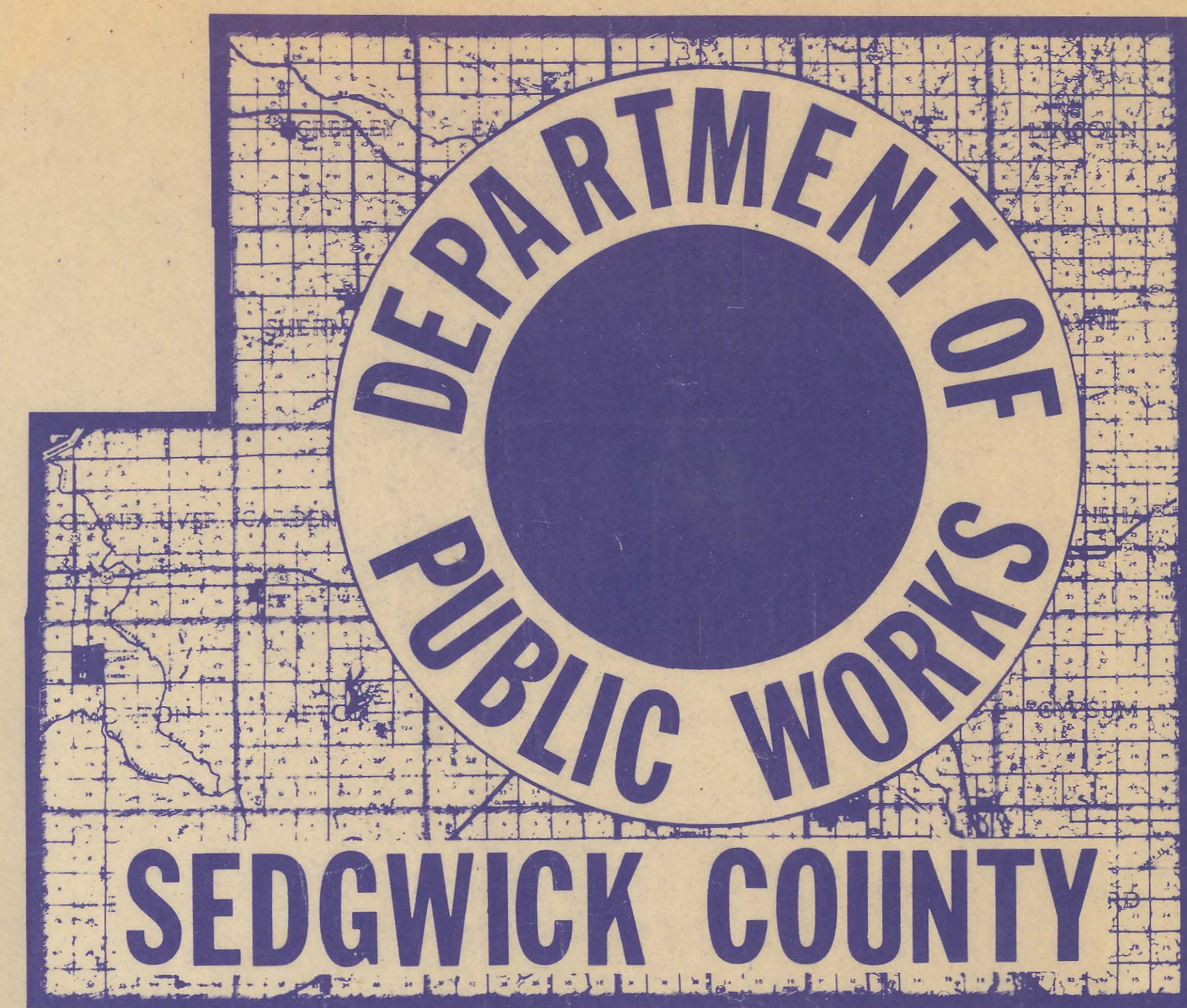


4MC-048



LOCATION MAP

INDEX OF SHEETS

| | |
|----------------|-----------------------------------|
| SHEET NO. 1 | TITLE SHEET |
| SHEET NO. 2 | KEY MAP & SCHEDULE |
| SHEET NO. 3 | PLAT OF SPRINGDALE LAKES ADDITION |
| SHEET NO. 4&5 | SANITARY SEWER DETAIL |
| SHEET NO. 6 | WYE LOCATION TABLE |
| SHEET NO. 7-10 | PLAN & PROFILE |

CONSTRUCTION PLANS FOR
SANITARY SEWER IMPROVEMENTS
SPRINGDALE LAKES 2ND ADDITION

NOTE: THESE "AS CONSTRUCTED" DRAWINGS ARE BASED ON THE RESIDENT INSPECTION NOTES AS DIRECTED BY THE SEDGWICK COUNTY DEPARTMENT OF PUBLIC WORKS. THERE MAY BE SLIGHT DISCREPANCIES BETWEEN THE INFORMATION IN THESE PLANS AND ACTUAL FIELD MEASUREMENTS FOR MANHOLE TOP ELEVATIONS, FLOWLINE ELEVATIONS, AND DISTANCES BETWEEN MANHOLES.

PHASE I
 SEDGWICK COUNTY, KANSAS

APRIL 1980

PROFESSIONAL ENGINEERING CONSULTANTS, P.A.
 ENGINEERS
 WICHITA, KANSAS



AS CONSTRUCTED
 PROJ. ENG. *mbs* DATE *12/10/81*
 RES. ENG. _____ DATE _____

NOTE: Revised Aug. 29, '83, r.m.c.

APPROVED BY:
 SEDGWICK COUNTY
 DEPARTMENT OF PUBLIC WORKS
 DIRECTOR/COUNTY ENGINEER _____ DATE _____

APPROVED BY:
 WICHITA-SEDGWICK COUNTY
 DEPARTMENT OF COMMUNITY HEALTH
James F. Libby, Jr. 8-22-80
 DIRECTOR DATE

APPROVED BY:
 BOARD OF COUNTY COMMISSIONERS
 _____ 9/24/80
 CHAIRMAN DATE

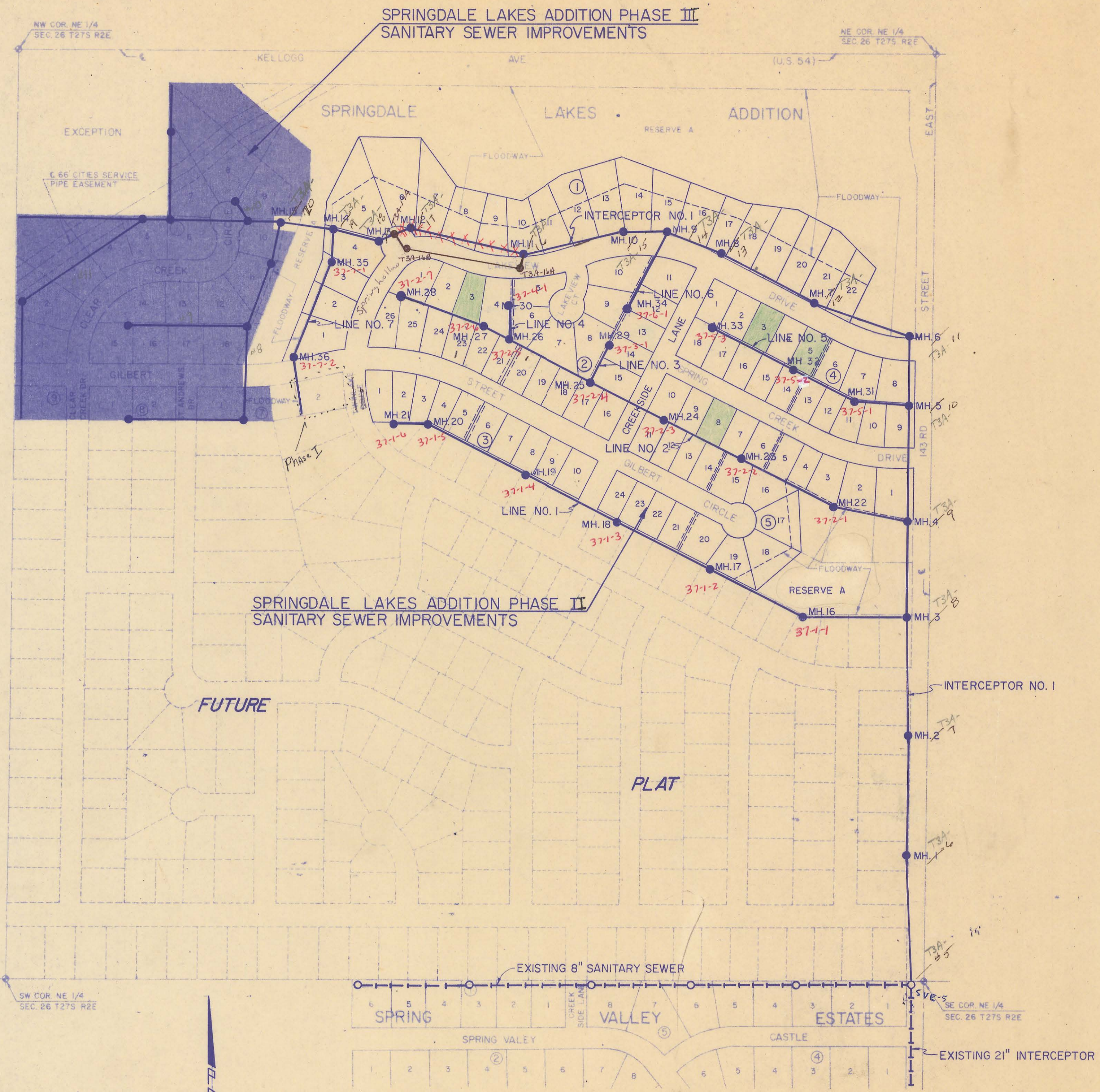
FILED IN THE OFFICE OF:
 THE SEDGWICK COUNTY CLERK
 _____ 9-24-80
 COUNTY CLERK DATE

CONVENTIONAL SIGNS

| | | |
|-------------------------|-------|-----------|
| WIRE FENCE | _____ | x x x |
| HEDGE ROW | _____ | ~~~~~ |
| RAILROADS | _____ | |
| SURVEY LINE | _____ | 9 100 |
| RIGHT OF WAY | _____ | e |
| TELEPHONE POLE | _____ | • |
| POWER POLE | _____ | ■ |
| COMB. POWER & TELEPHONE | _____ | ■ |
| TOWNSHIP LINE | _____ | ////// |
| CONSTRUCTION LIMITS | _____ | - - - - - |
| GUARD FENCE | _____ | ••••• |
| TREES | _____ | oo |

SPRINGDALE LAKES 2nd DIV.#37

4MC-048



GENERAL NOTES

1. THE CONTRACTOR SHALL CONTAIN HIS OPERATIONS TO PERMIT TRAFFIC THROUGH AND ACROSS CONSTRUCTION ON 143rd STREET AT ALL TIMES. THE CONTRACTOR SHALL ERECT WARNING SIGNS, FLASHING LIGHTS, AND BARRICADES IN COMPLIANCE WITH THE MANUAL ON UNIFORM TRAFFIC CONTROL DEVICES TO ENSURE SAFETY AS DIRECTED IN ARTICLE 11 ON THE GENERAL CONDITIONS. THE CONTRACTOR SHALL LIMIT THE EXTENT OF TRENCH TO REMAIN OPEN OVERNIGHT AND WEEKENDS TO LESS THAN 50 FEET.
2. THE CONTRACTOR WILL BE REQUIRED TO NOTIFY EACH OF THE FOLLOWING UTILITY COMPANIES PRIOR TO THE BEGINNING OF CONSTRUCTION AND SHOULD REQUEST THAT ANY EXISTING LINES BE FLAGGED.

| | |
|--|---|
| KANSAS GAS & ELECTRIC COMPANY 1900 EAST CENTRAL 264-1111 (EXT. 434) JERRY LANE | GAS SERVICE COMPANY 1021 EAST 26th STREET NORTH 263-7511 GENE CURLESS |
| CITY OF WICHITA WATER DEPARTMENT 455 NORTH MAIN STREET 268-4555 RALPH HULL | SOUTHWESTERN BELL TELEPHONE COMPANY 154 NORTH BROADWAY 262-5500 KEVIN MOORE |
3. THE CONTRACTOR MUST ALSO NOTIFY THE TELEPHONE COMPANY 24 HOURS PRIOR TO BEGINNING ANY CONSTRUCTION WORK NEAR BURIED TELEPHONE LINES.
4. WHERE REMOVAL OF EXISTING FENCES PARALLEL TO THE CONSTRUCTION IS DEEMED NECESSARY BY THE CONTRACTOR, THE CONTRACTOR SHALL COORDINATE REMOVAL WITH ADJACENT PROPERTY OWNERS. ALL REMOVAL AND RESETTING OF FENCES WILL NOT BE PAID FOR SEPARATELY AND SHALL BE CONSIDERED SUBSIDIARY TO THE INSTALLATION OF THE PIPE.
5. THE CONTRACTOR SHALL AVOID REMOVAL OF ALL TREES WHERE POSSIBLE. WHERE THE CONTRACTOR BELIEVES THE REMOVAL IS REQUIRED HE SHALL COORDINATE SUCH REMOVAL WITH THE ENGINEER.
6. ALL TREE TRIMMING SHALL BE PERFORMED BY THE CONTRACTOR WHERE NECESSARY AND APPROVED BY THE ENGINEER.
7. TREES REMOVED AND/OR TREE TRIMMINGS SHALL BE DISPOSED OF BY THE CONTRACTOR AS DIRECTED IN SECTION 2 OF THE SPECIFICATIONS. TREES REMOVED AND DISPOSED OF AND TREE TRIMMINGS REMOVED AND DISPOSED OF SHALL NOT BE PAID FOR SEPARATELY BUT SHALL BE CONSIDERED SUBSIDIARY TO THE WORK.

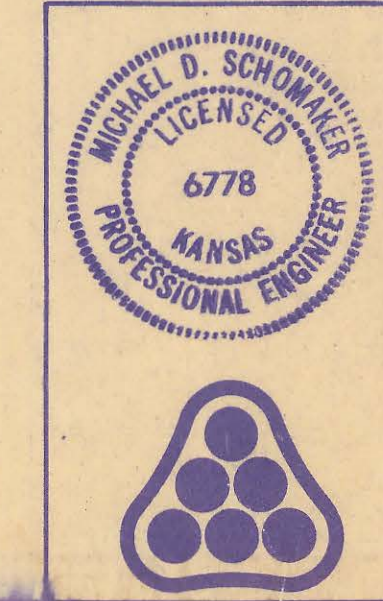
THESE PLANS WERE MODIFIED DURING CONSTRUCTION OF THE PROJECT AT THE REQUEST OF THE PROJECT SITE SUBDIVIDER AND AS APPROVED BY THE SEDGWICK COUNTY DEPARTMENT OF PUBLIC WORKS. THE MODIFICATIONS WERE MADE TO ACCOMMODATE A PROPOSED REPLAT OF THE PROJECT SITE KNOWN AS SPRINGDALE LAKES 2ND ADDITION.

| SEWER LINE SCHEDULE | |
|---------------------|-----------|
| LINE NO. | SHEET NO. |
| INTERCEPTOR NO. 1 | 7 & 8 |
| LINE NO. 1 | 8 & 9 |
| LINE NO. 2 | 9 |
| LINE NO. 3 | 9 |
| LINE NO. 4 | 9 |
| LINE NO. 5 | 10 |
| LINE NO. 6 | 10 |
| LINE NO. 7 | 10 |

AS CONSTRUCTED
 PROJ. ENG. MDS DATE 12/10/81
 RES. ENG. _____ DATE _____

Note: CO. #1 Replat of Blks. 2, 3, 4, & part of 5
 This sheet does not reflect replat.
 There is no change in Sanitary
 Sewer Alignment.

1" = 200'



| | | |
|--|----------------------------------|----------------------------|
| 1 | CO. #1 Addition of Wyes & Risers | DEP 4/22/81 |
| No. | Revision | By Date |
| SEDGWICK COUNTY DEPARTMENT OF PUBLIC WORKS JOE FREEMAN, PE. ACTING DIRECTOR & COUNTY ENGINEER | | |
| KEY MAP & SCHEDULE | | |
| PHASE I SANITARY SEWER IMPROVEMENTS SPRINGDALE LAKES ADDITION, SEDGWICK COUNTY, KANSAS | | |
| PROFESSIONAL ENGINEERING CONSULTANTS, P.A. | | |
| ENGINEERS WICHITA, KANSAS | | |
| Designed by <u>DLM, MDS</u> | Job No. <u>78287</u> | Sht. <u>2</u> of <u>10</u> |
| Drawn by <u>SC</u> | Date <u>April 1980</u> | |

SPRINGDALE LAKES SECOND ADDITION

SEDGWICK COUNTY, KANSAS

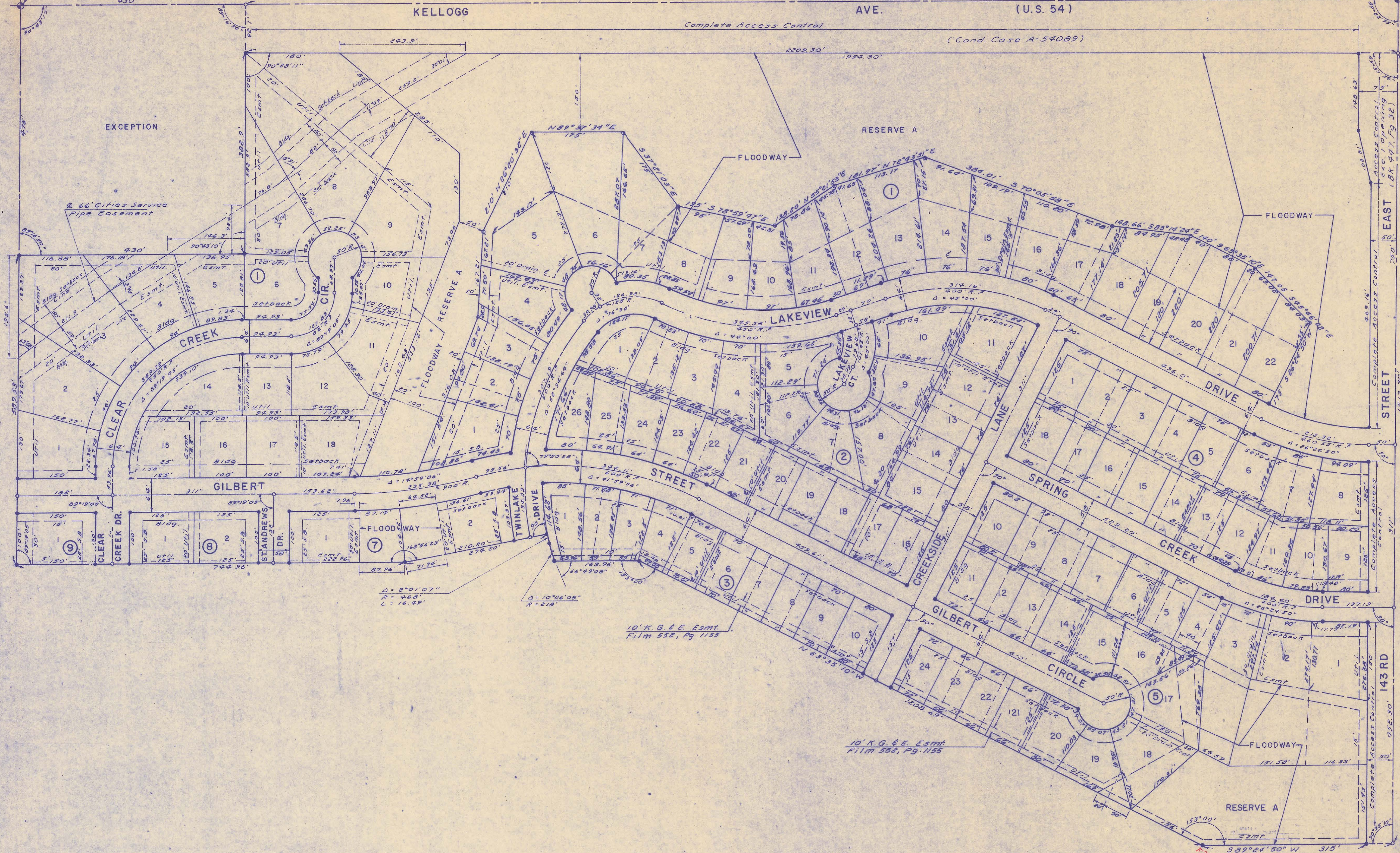
2209.23'

AVE.

(U.S. 54)

NE Cor. NE 1/4
Sec. 26-27-2E

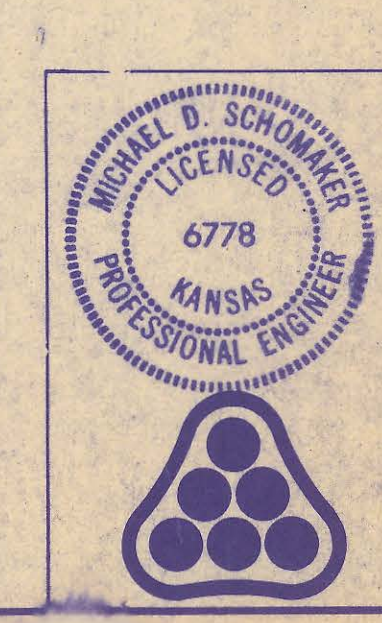
NW Cor. NE 1/4
Sec. 26-27-2E



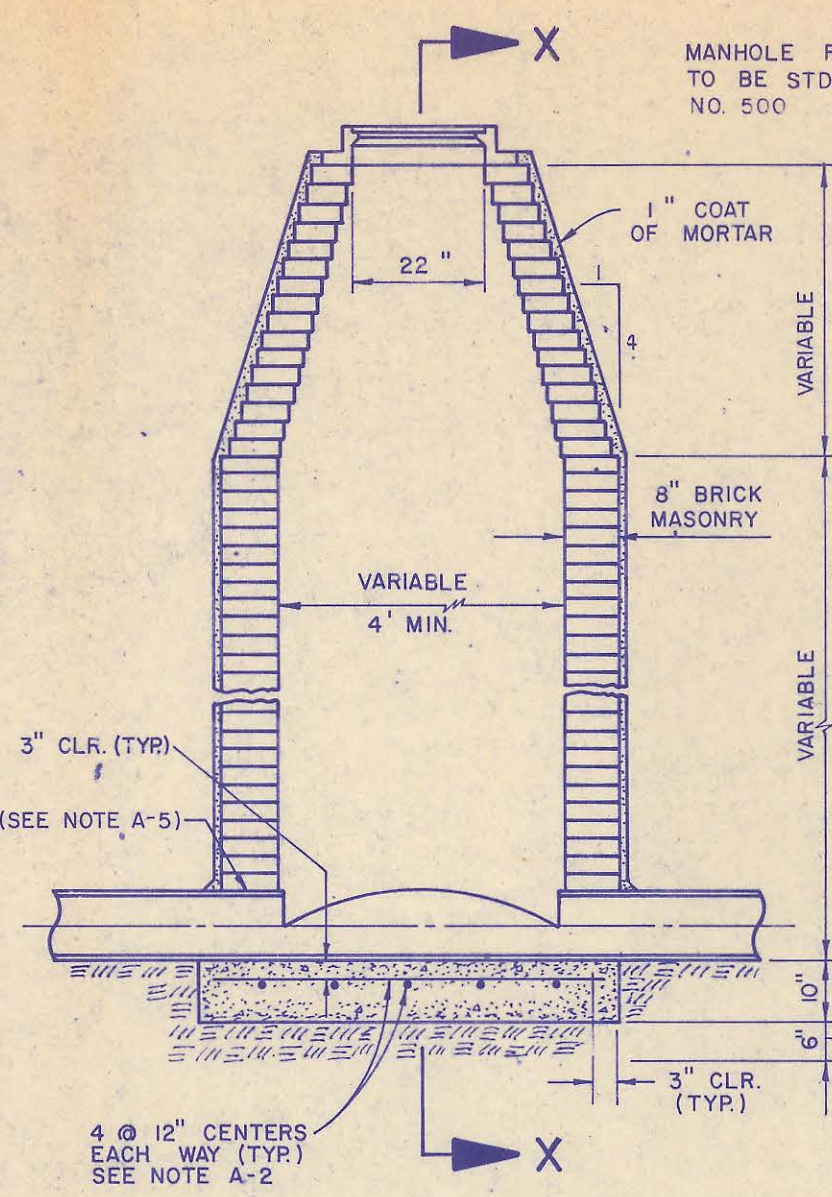
Scale: 1"=100'
• Iron
○ Control Point

THESE PLANS WERE MODIFIED DURING CONSTRUCTION OF THE PROJECT AT THE REQUEST OF THE PROJECT SITE SUBDIVIDER AND AS APPROVED BY THE SEDGWICK COUNTY DEPARTMENT OF PUBLIC WORKS. THE MODIFICATIONS WERE MADE TO ACCOMMODATE A PROPOSED REPLACEMENT OF THE PROJECT SITE KNOWN AS SPRINGDALE LAKES 2ND ADDITION.

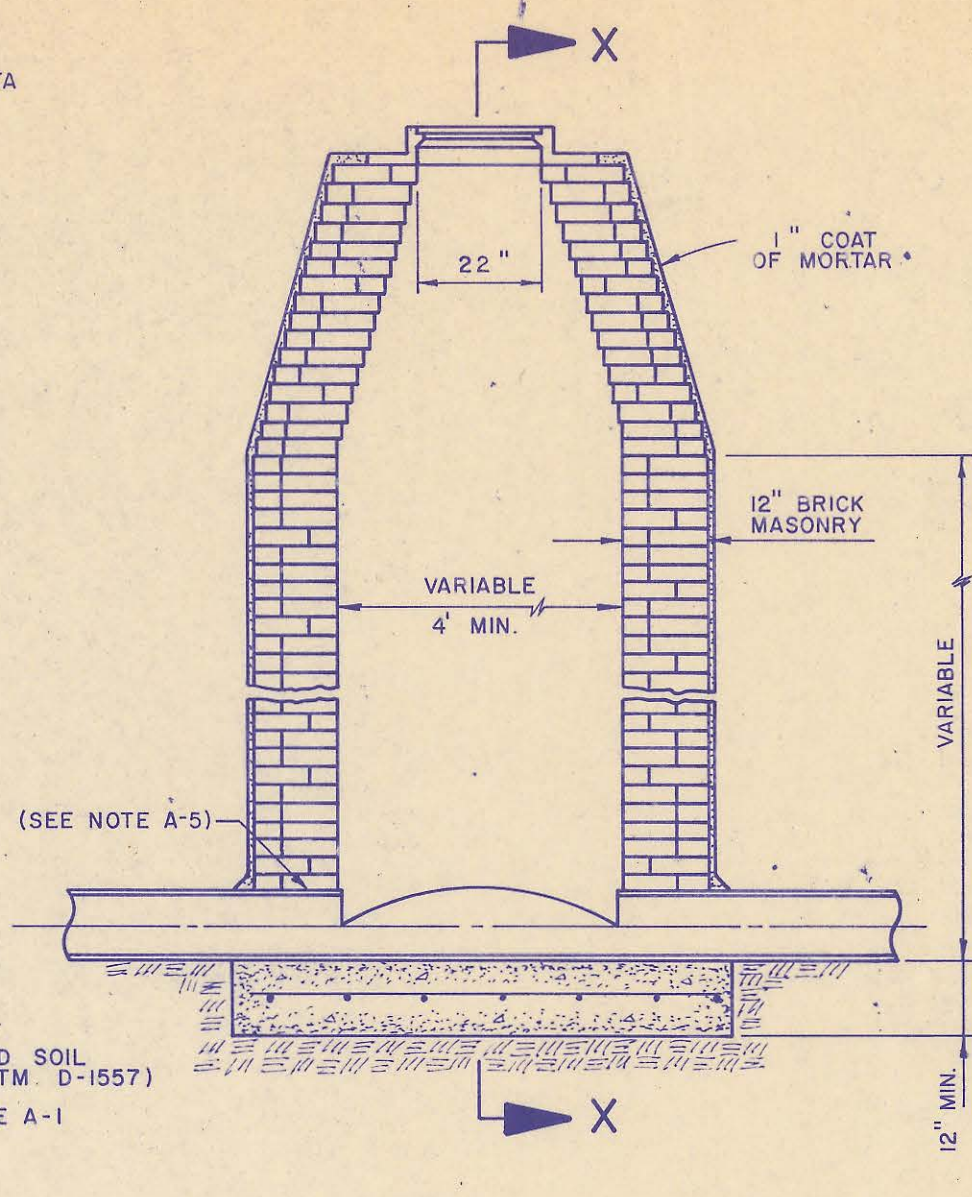
Note: CO #1 Springdale Lakes Addition has been replatted. See Plat of Springdale Lakes 2nd Addition



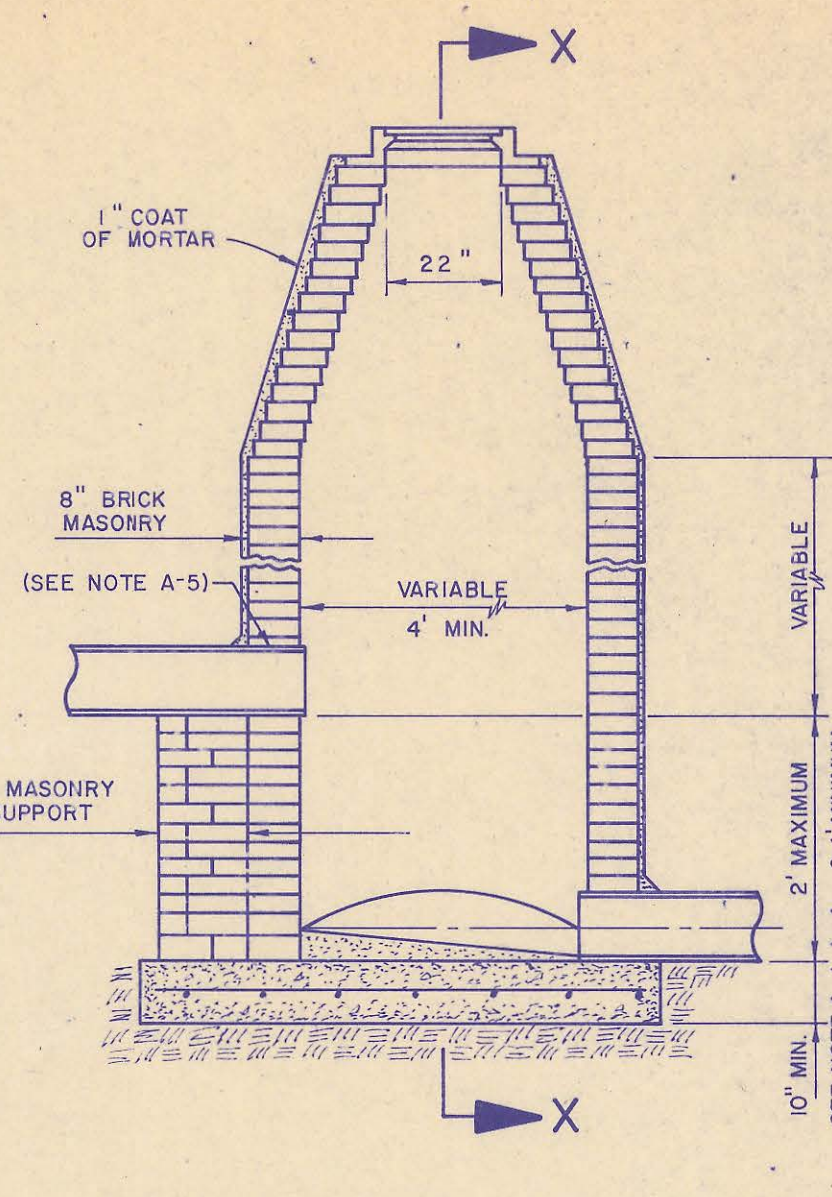
| No. | Revision | By | Date |
|--|----------|---------|--------------|
| | | REF | 3/31/80 |
| SEDGWICK COUNTY DEPARTMENT OF PUBLIC WORKS G.C. McLURE, JR., P.E. DIRECTOR & COUNTY ENGINEER | | | |
| FINAL PLAT OF SPRINGDALE LAKES ADDITION PHASE I SANITARY SEWER IMPROVEMENTS SPRINGDALE LAKES ADDITION, SEDGWICK COUNTY, KANSAS | | | |
| PROFESSIONAL ENGINEERING CONSULTANTS, P.A. ENGINEERS WICHITA, KANSAS | | | |
| Designed by | DLM, MDS | Job No. | 70287 |
| Drawn by | SC | Date | April 1980 |
| | | | Sht. 3 of 10 |



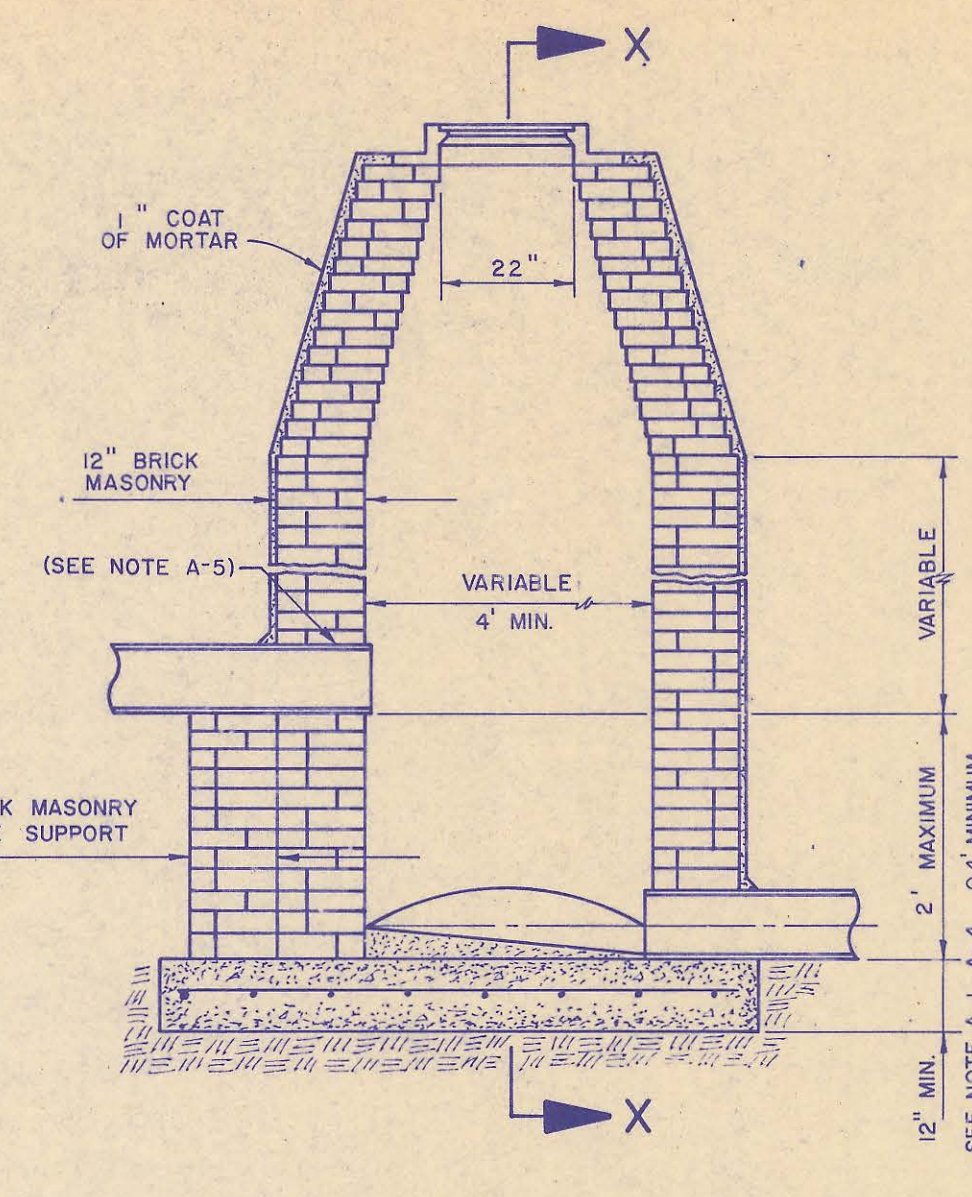
STANDARD MANHOLE TYPE A



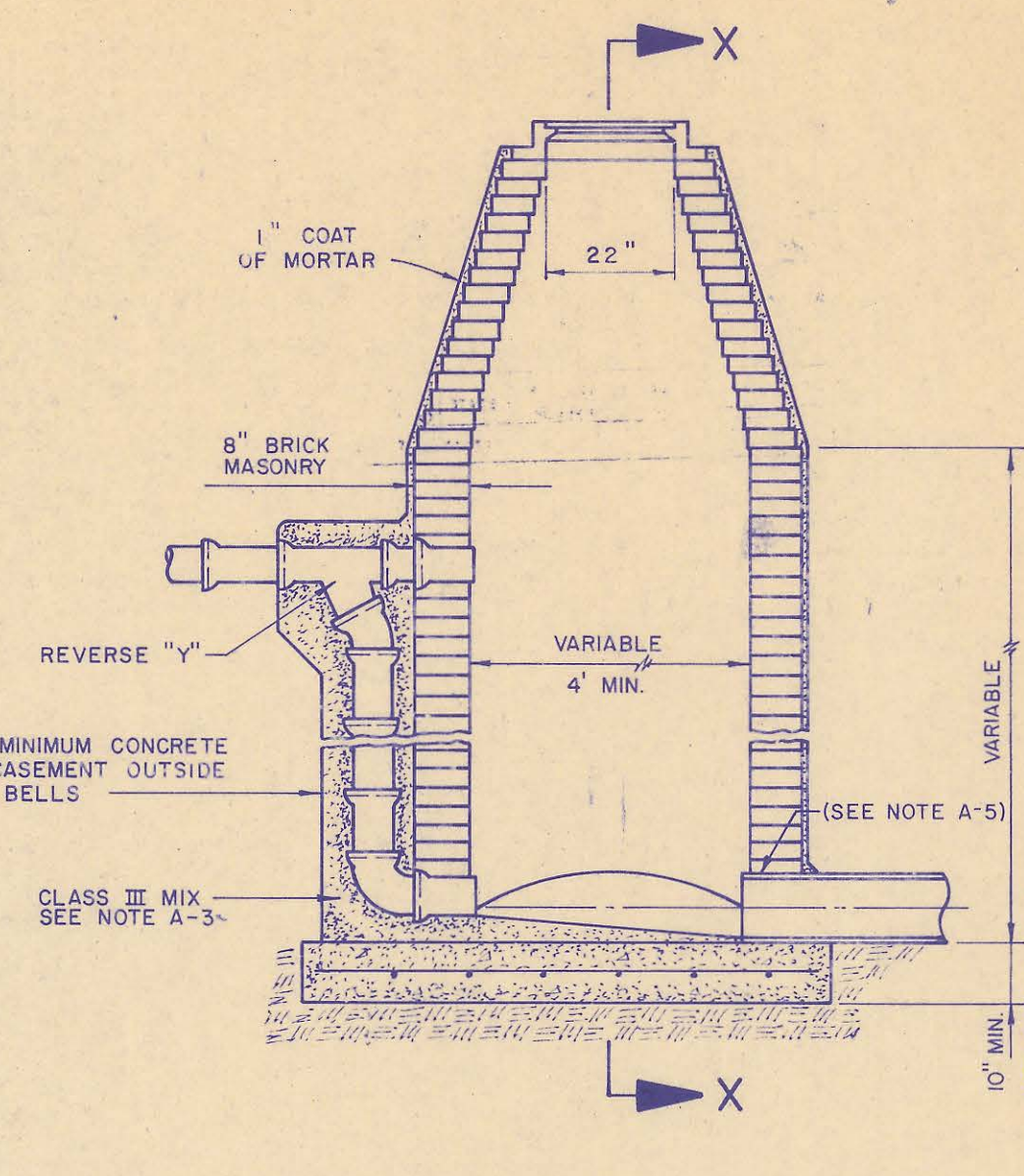
STANDARD MANHOLE TYPE AA



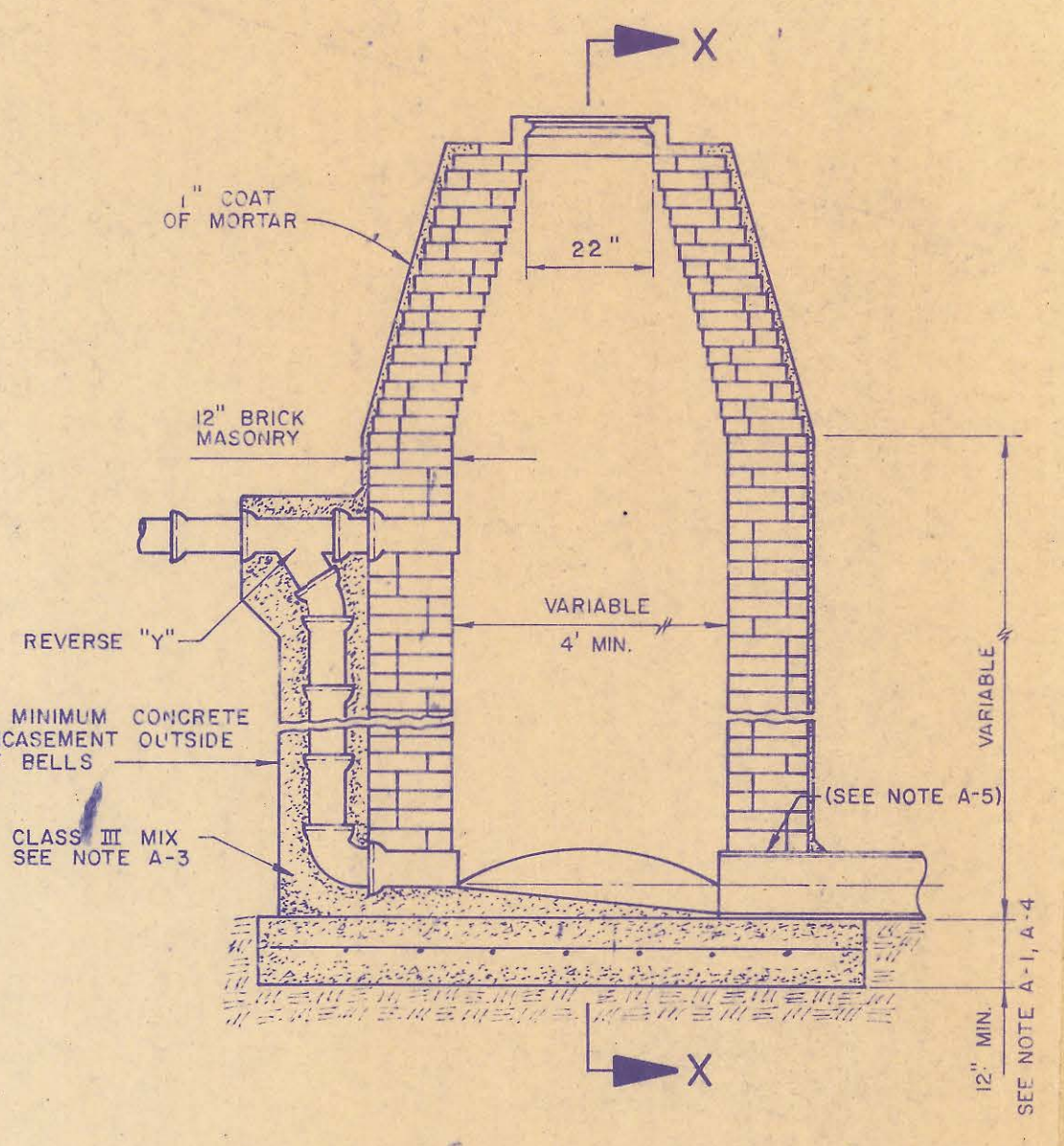
DROP MANHOLE TYPE B



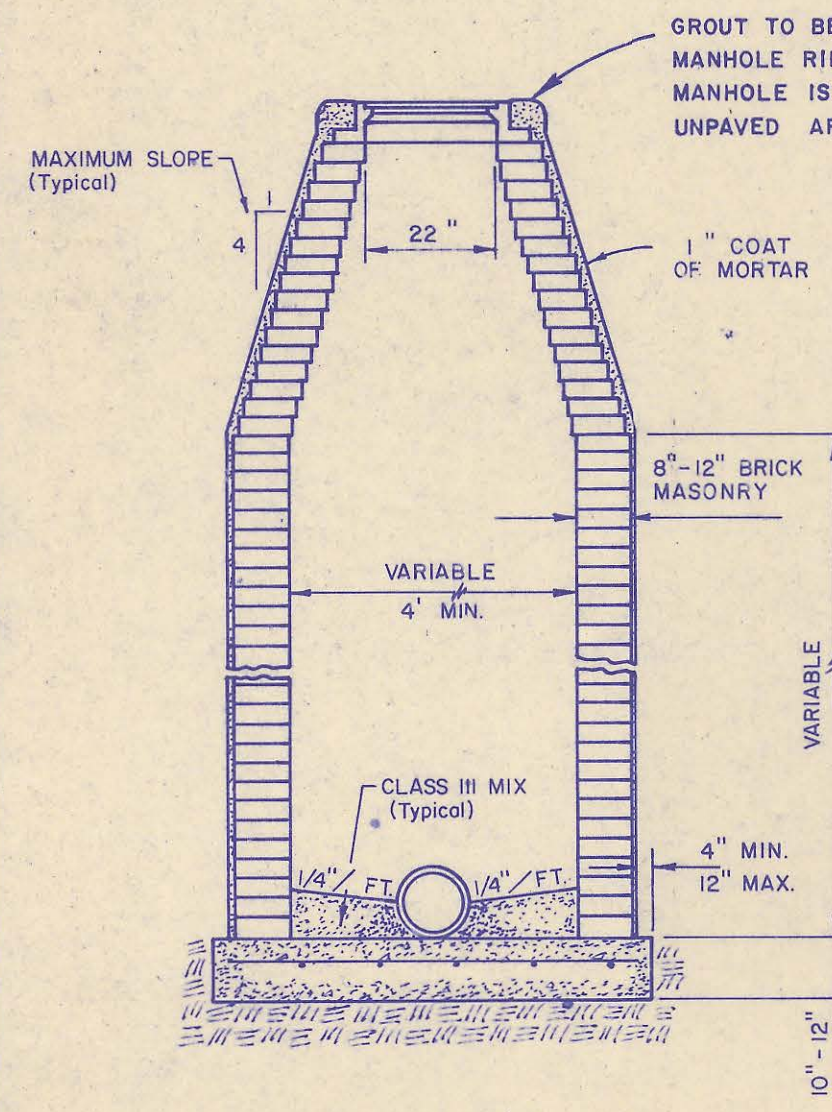
DROP MANHOLE TYPE BB



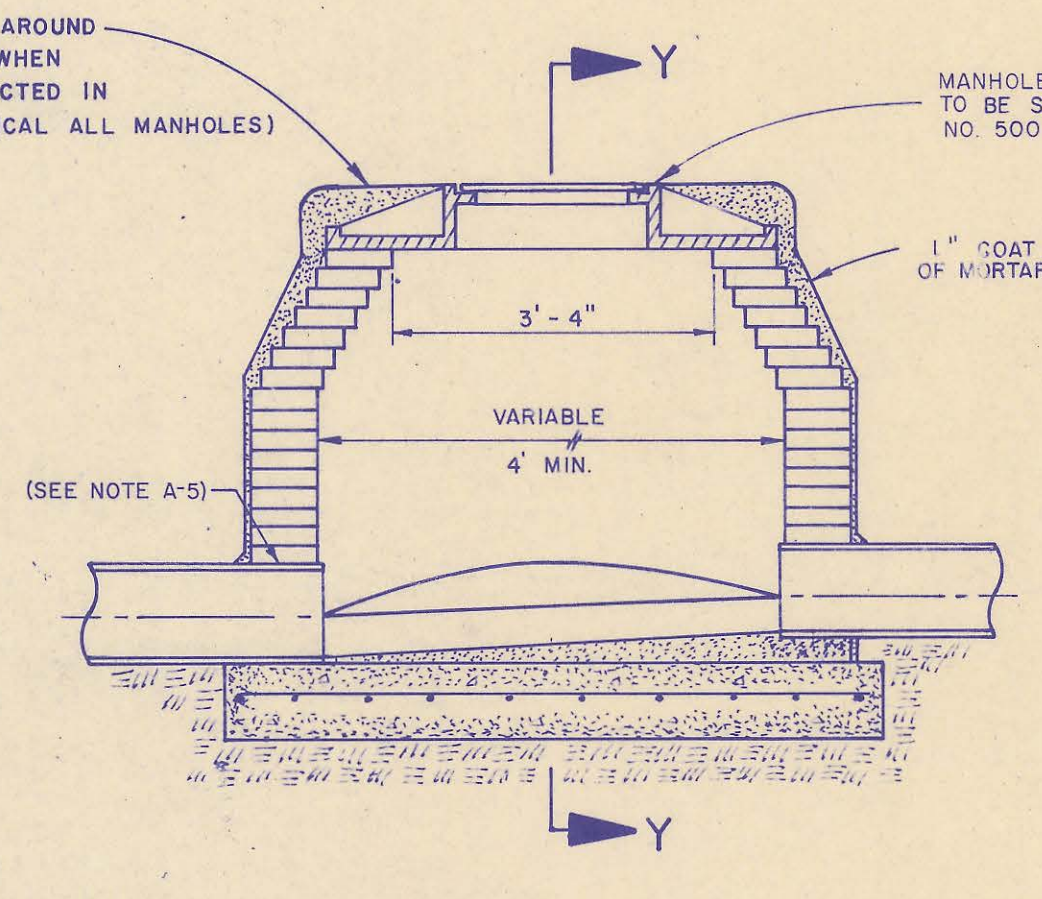
OUTSIDE DROP MANHOLE TYPE C



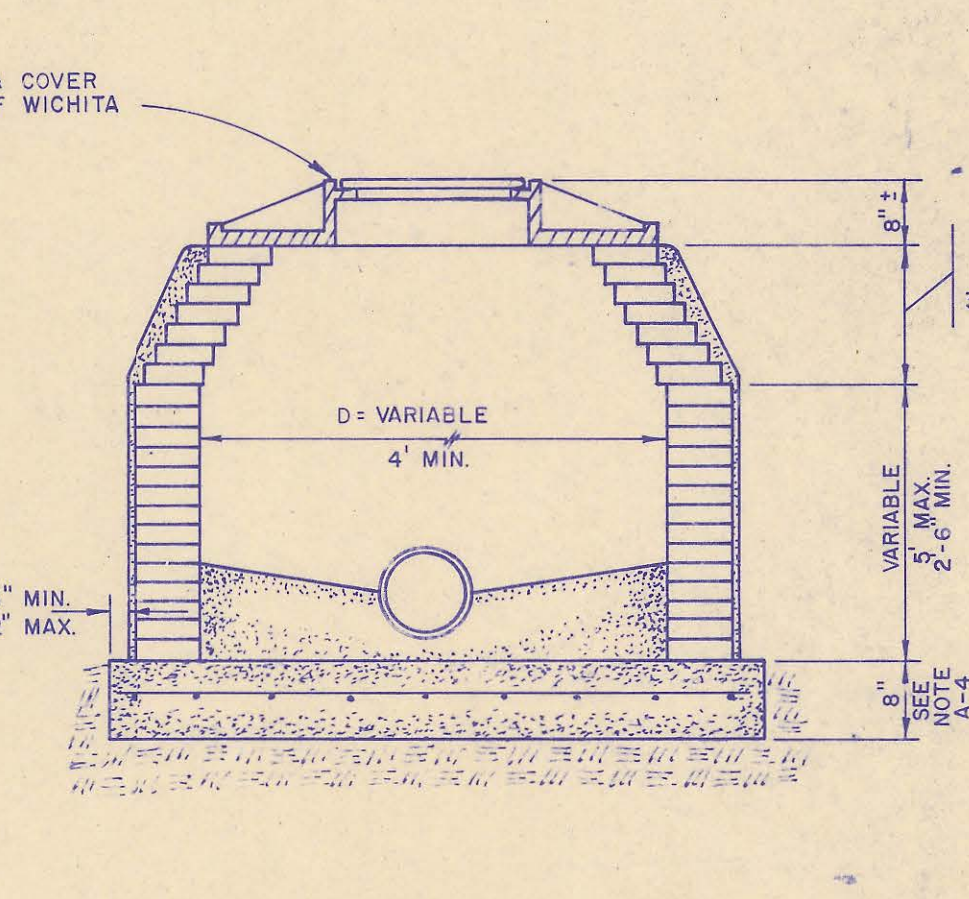
OUTSIDE DROP MANHOLE TYPE CC



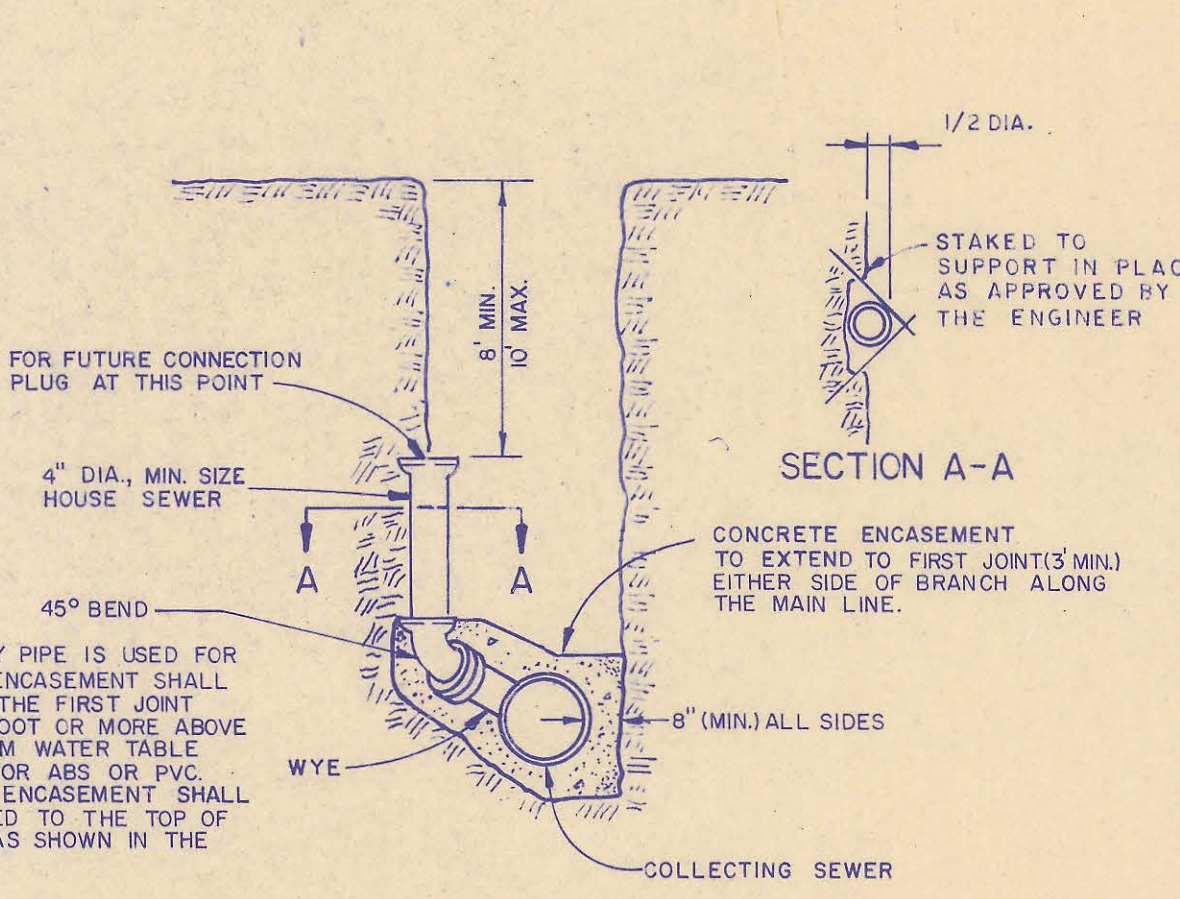
SECTION X



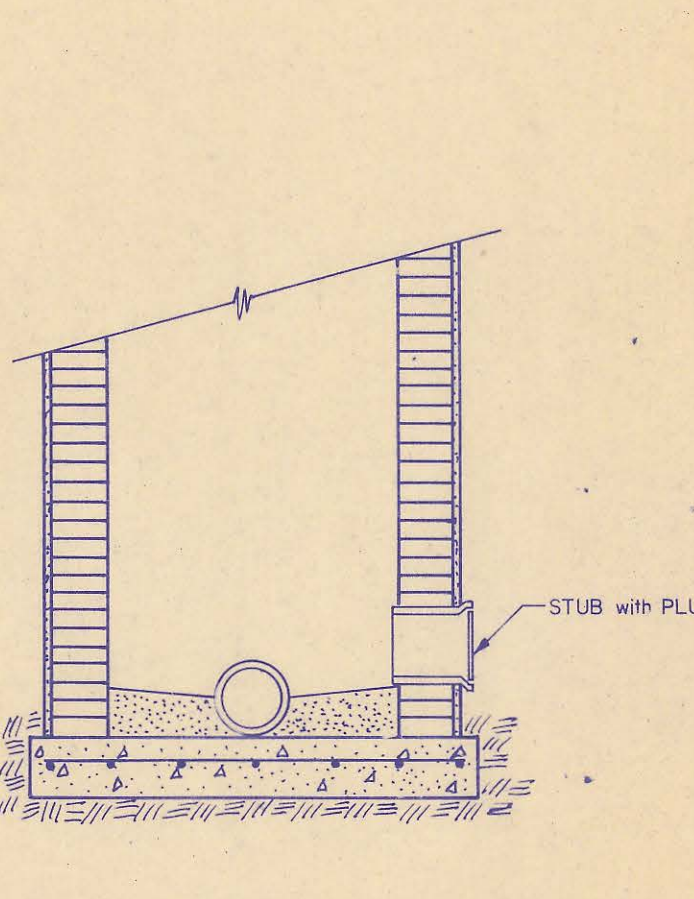
SHALLOW MANHOLE TYPE D



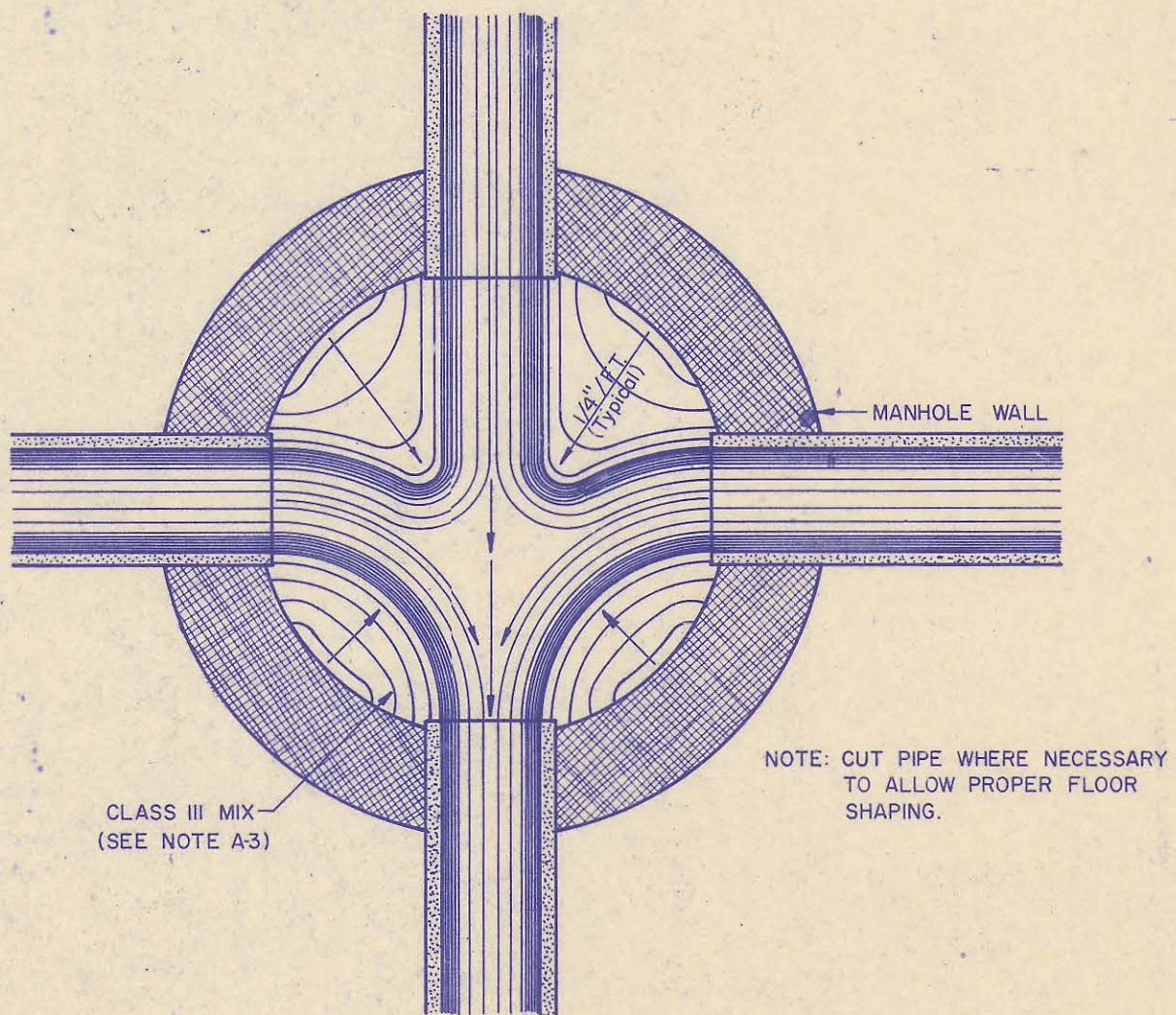
SECTION Y



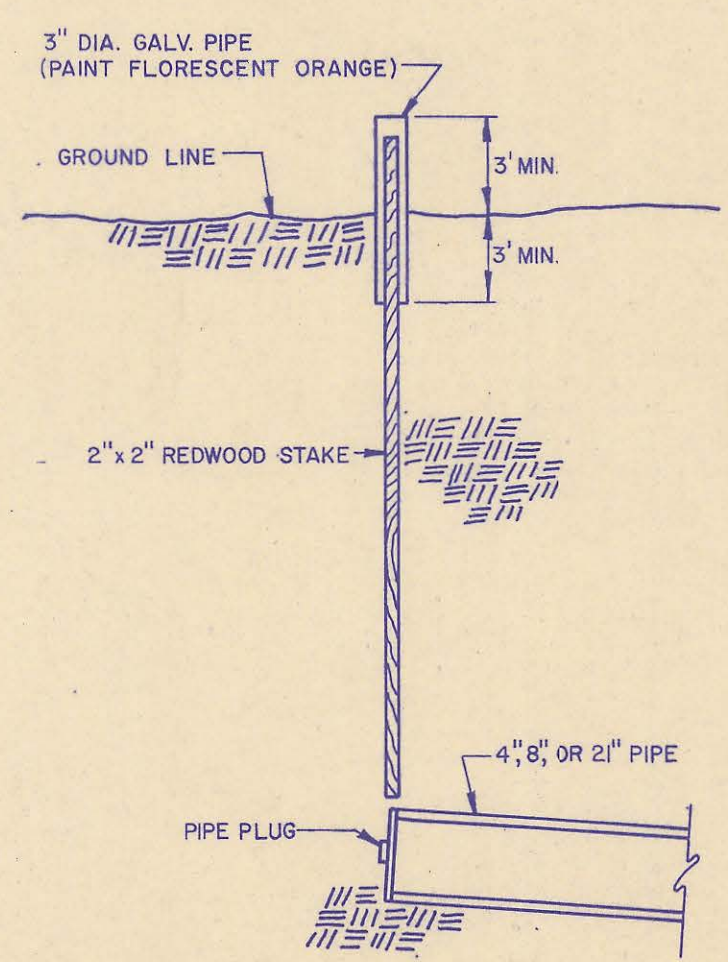
RISER DETAIL



STUB DETAIL



TYPICAL MANHOLE FLOOR SHAPING



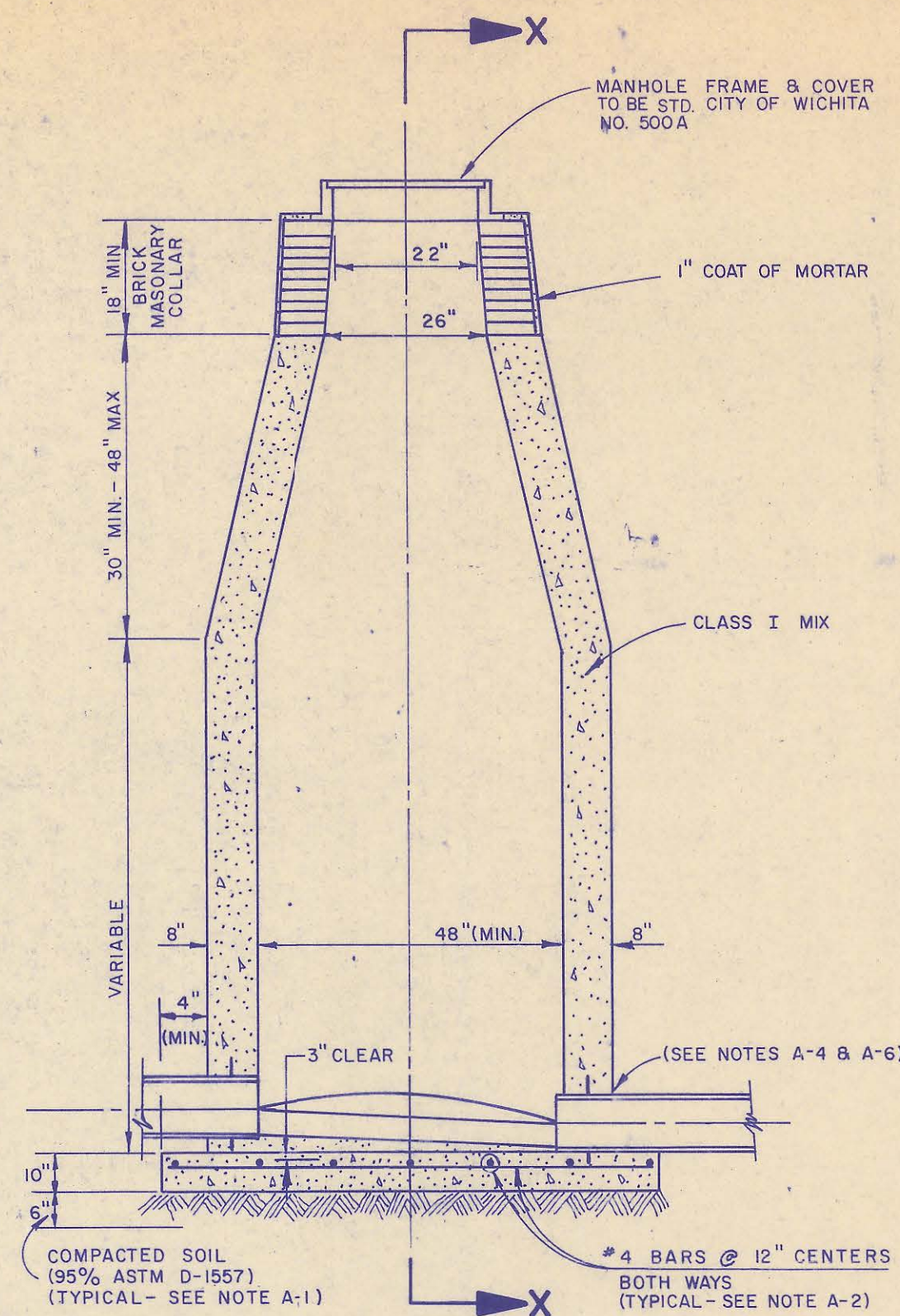
RISER & BURIED PIPE STAKING DETAIL
(Staking & Plugging shall be subsidiary to the pipe line installed.)

- NOTES
- MANHOLES
 - IF, IN THE OPINION OF THE ENGINEER, THE MANHOLE SUBGRADE APPEARS UNSTABLE, THE CONTRACTOR HAS THE OPTION TO COMPACT SUBGRADE AS SHOWN OR INCREASE THE THICKNESS OF THE MANHOLE BASE AS DIRECTED BY THE ENGINEER.
 - STEEL REINFORCING IS REQUIRED IN ALL MANHOLE BASES.
 - MORTAR USED IN MASONRY CONSTRUCTION TO BE CLASS III MIX.
 - ALL MANHOLE BASES TO BE CLASS I MIX. APPROVED FLEXIBLE WATERSTOP GASKETS SHALL BE INSTALLED TO JOIN THE SEWER TO THE MANHOLE WALL WHEN A.B.S. COMPOSITE PIPE, POLYETHYLENE PIPE, OR P.V.C. PIPE IS USED. FOR OTHER TYPES OF PIPE THE SEWER EXTENDING FROM MANHOLES SHALL BE SUPPORTED WITH CONCRETE TO THE FIRST JOINT OF PIPE FROM THE MANHOLE WALL. CONCRETE SUPPORTS MAY BE DELETED PROVIDED AN APPROVED FLEXIBLE WATERSTOP GASKET IS INSTALLED TO JOIN THE SEWER TO THE MANHOLE WALL.
 - PIPE PLUGS SHALL BE AS MANUFACTURED BY PIPE SUPPLIER WHEN AVAILABLE.

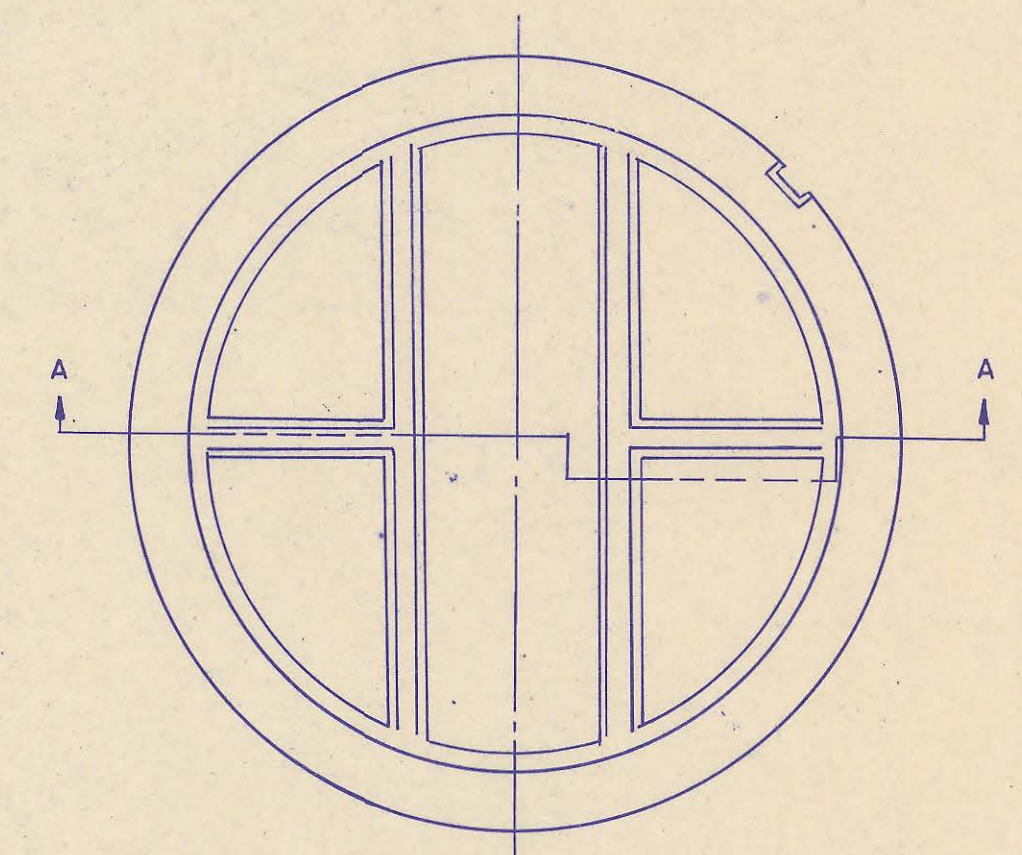
AS CONSTRUCTED
 PROJ. ENG. *mos* DATE *12/10/01*
 RES. ENG. _____ DATE _____



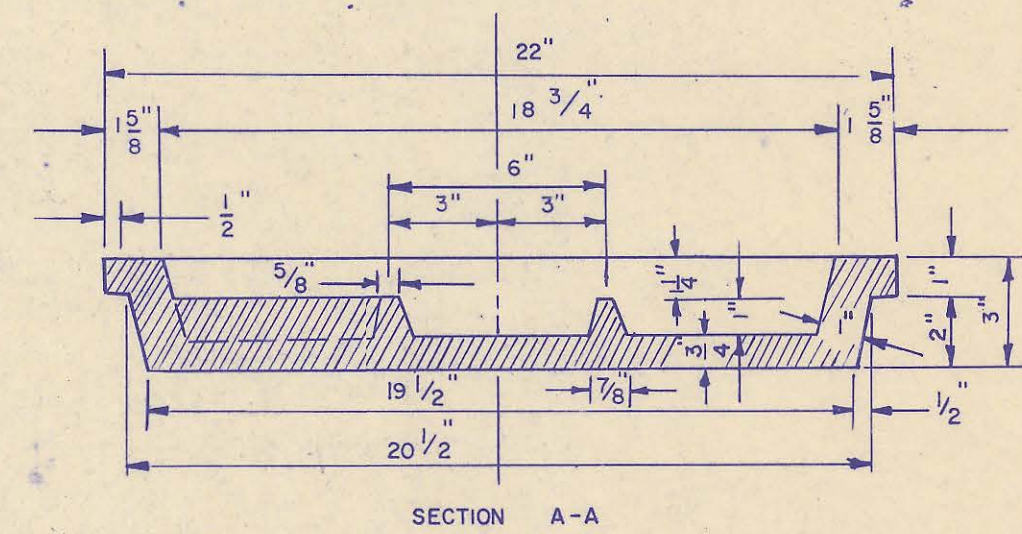
| | |
|--|------------------------|
| SEDGWICK COUNTY DEPARTMENT OF PUBLIC WORKS JOE FREEMAN, RE. ACTING DIRECTOR & COUNTY ENGINEER | |
| SANITARY SEWER DETAILS | |
| PHASE I SANITARY SEWER IMPROVEMENTS SPRINGDALE LAKES ADDITION, SEDGWICK COUNTY, KANSAS | |
| Professional Engineering Consultants, P.A. | |
| Designed by <i>DLM, MDS</i> | Job No. <i>78287</i> |
| Drawn by <i>SC</i> | Date <i>April 1980</i> |



CAST IN PLACE
STANDARD MANHOLE
TYPE "E-A"

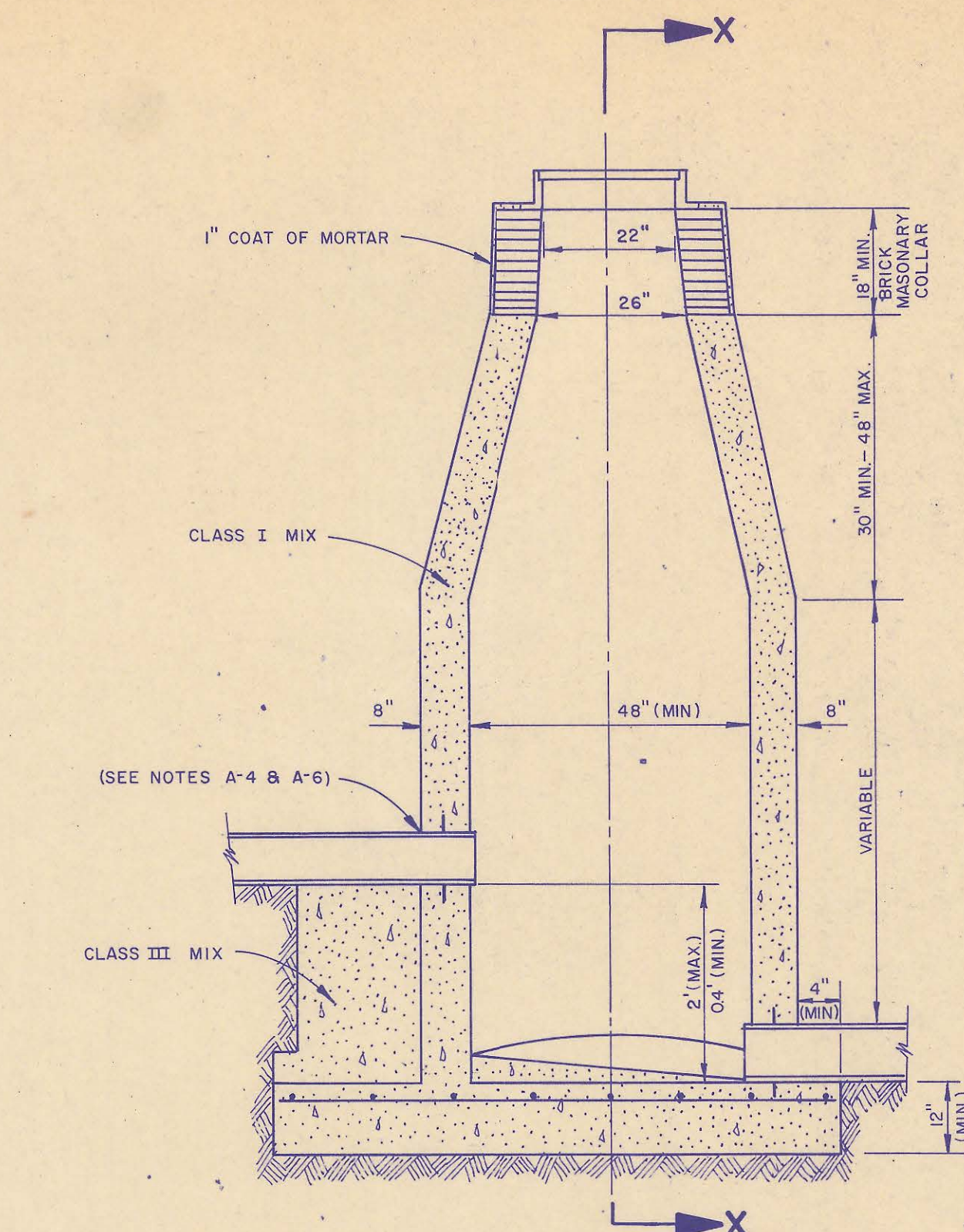
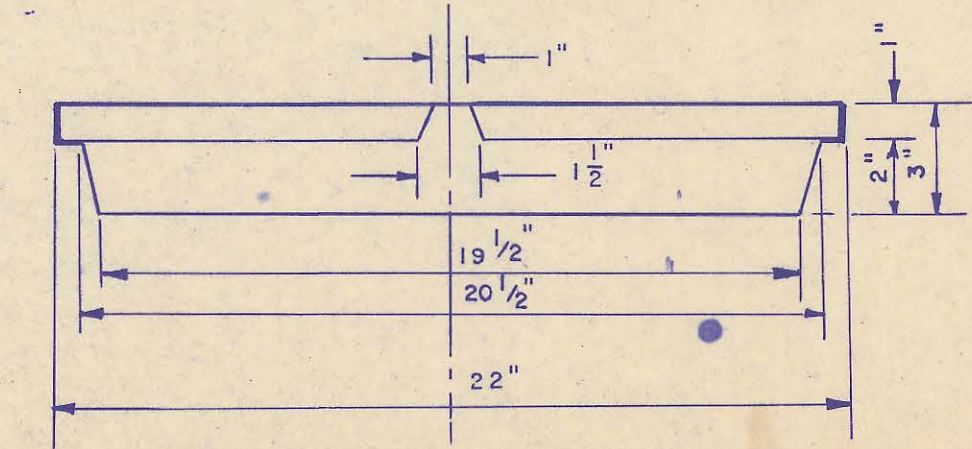


TOP VIEW

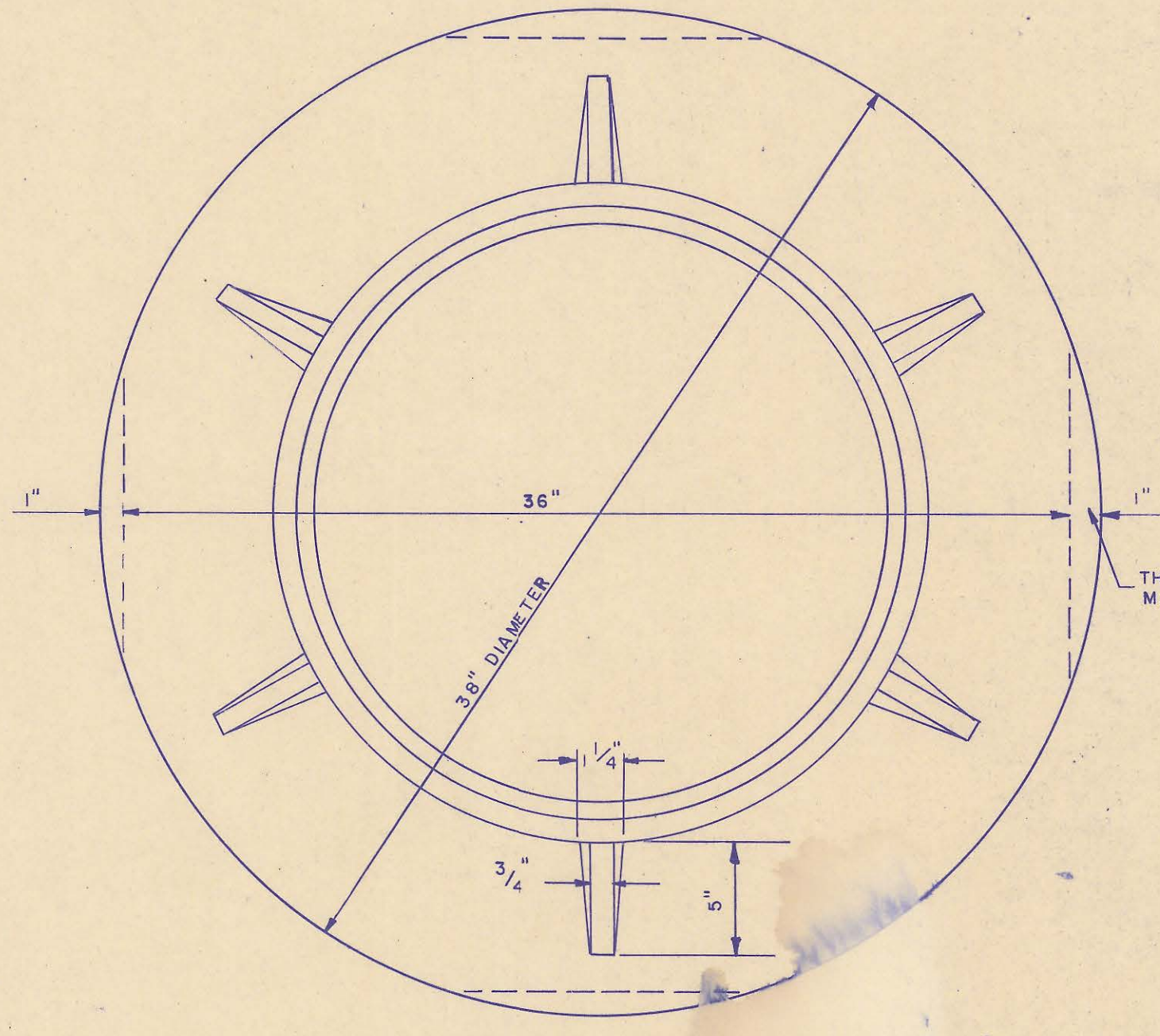


SECTION A-A

MANHOLE COVER
WEIGHT 110 LBS.
SIDE VIEW

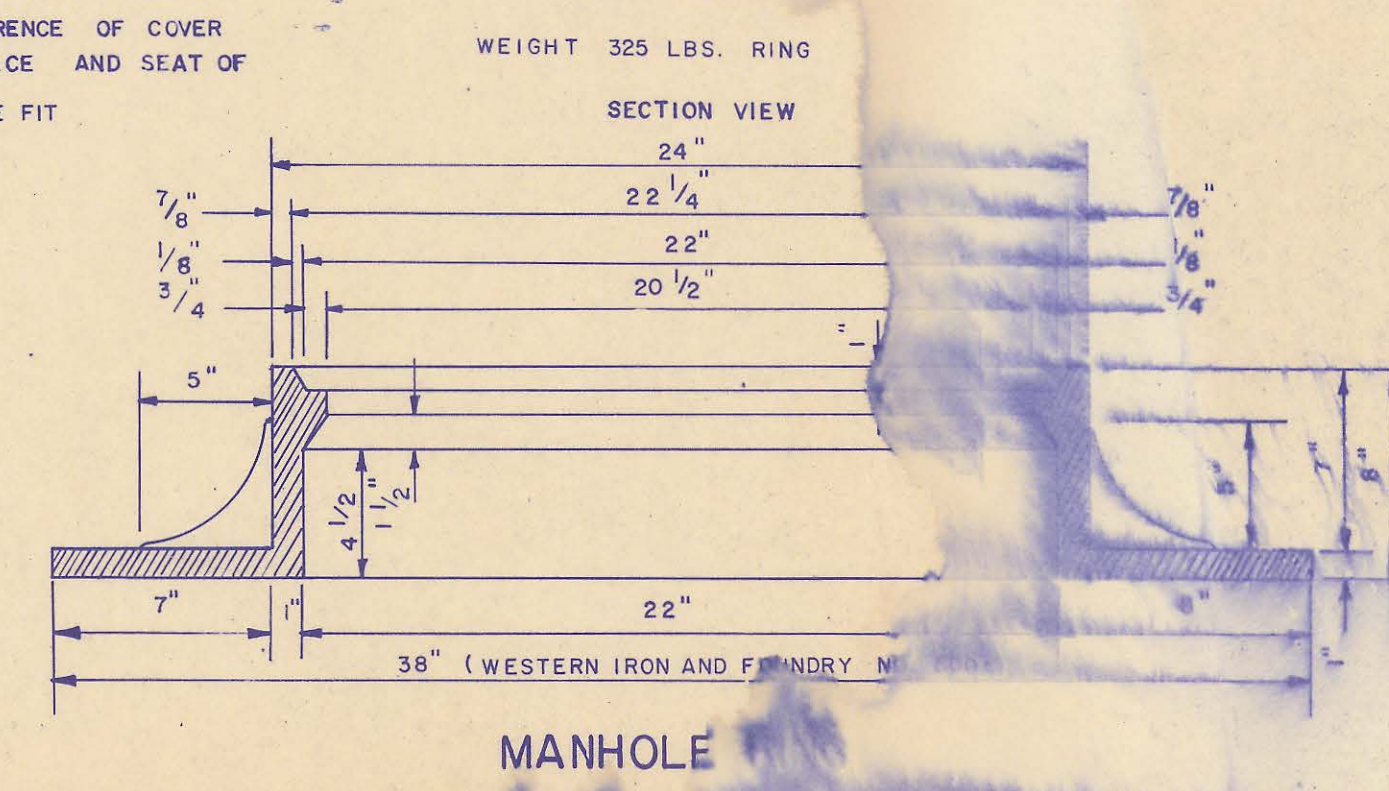


CAST IN PLACE
DROP MANHOLE
TYPE "E-B"

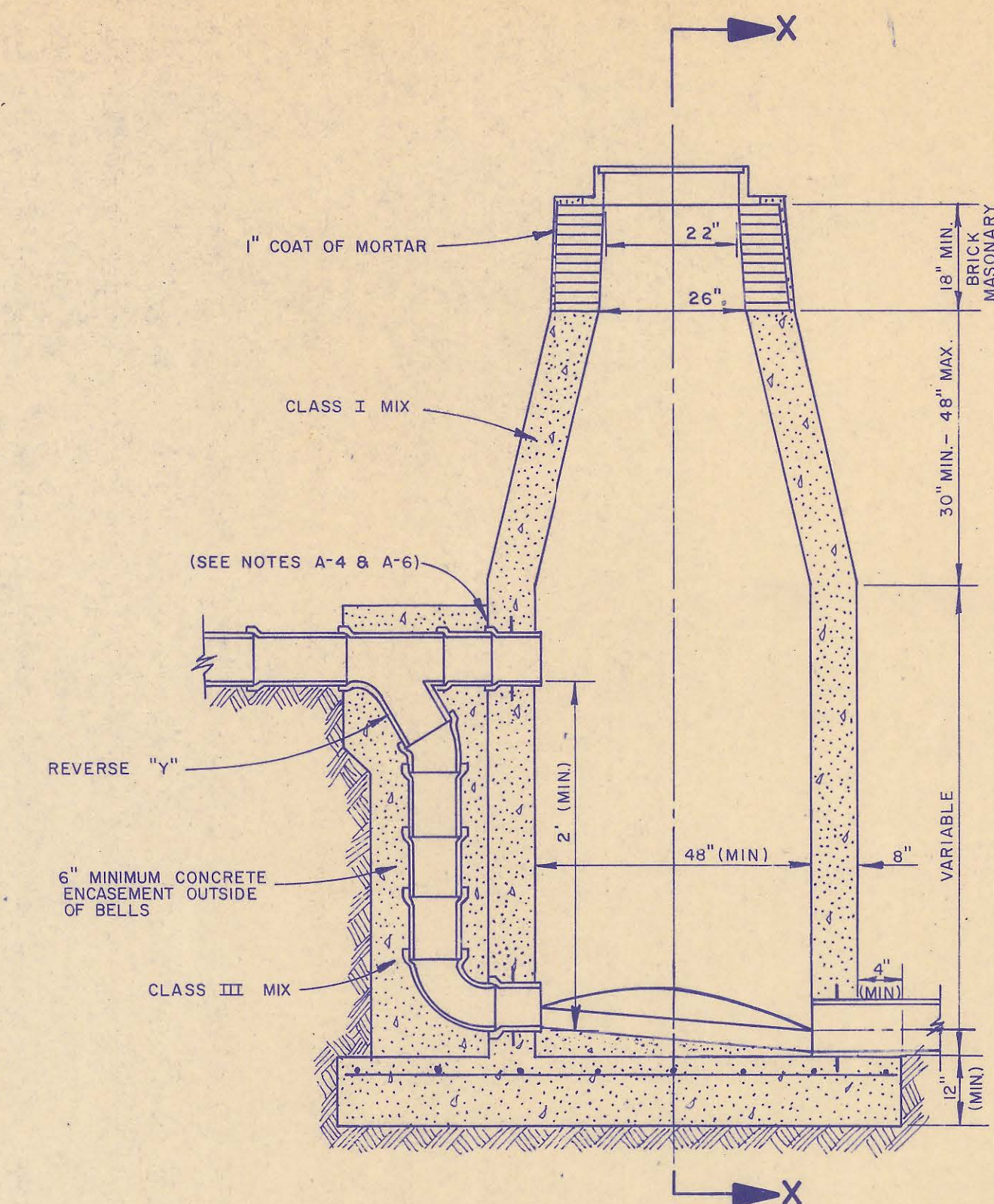


TOP VIEW

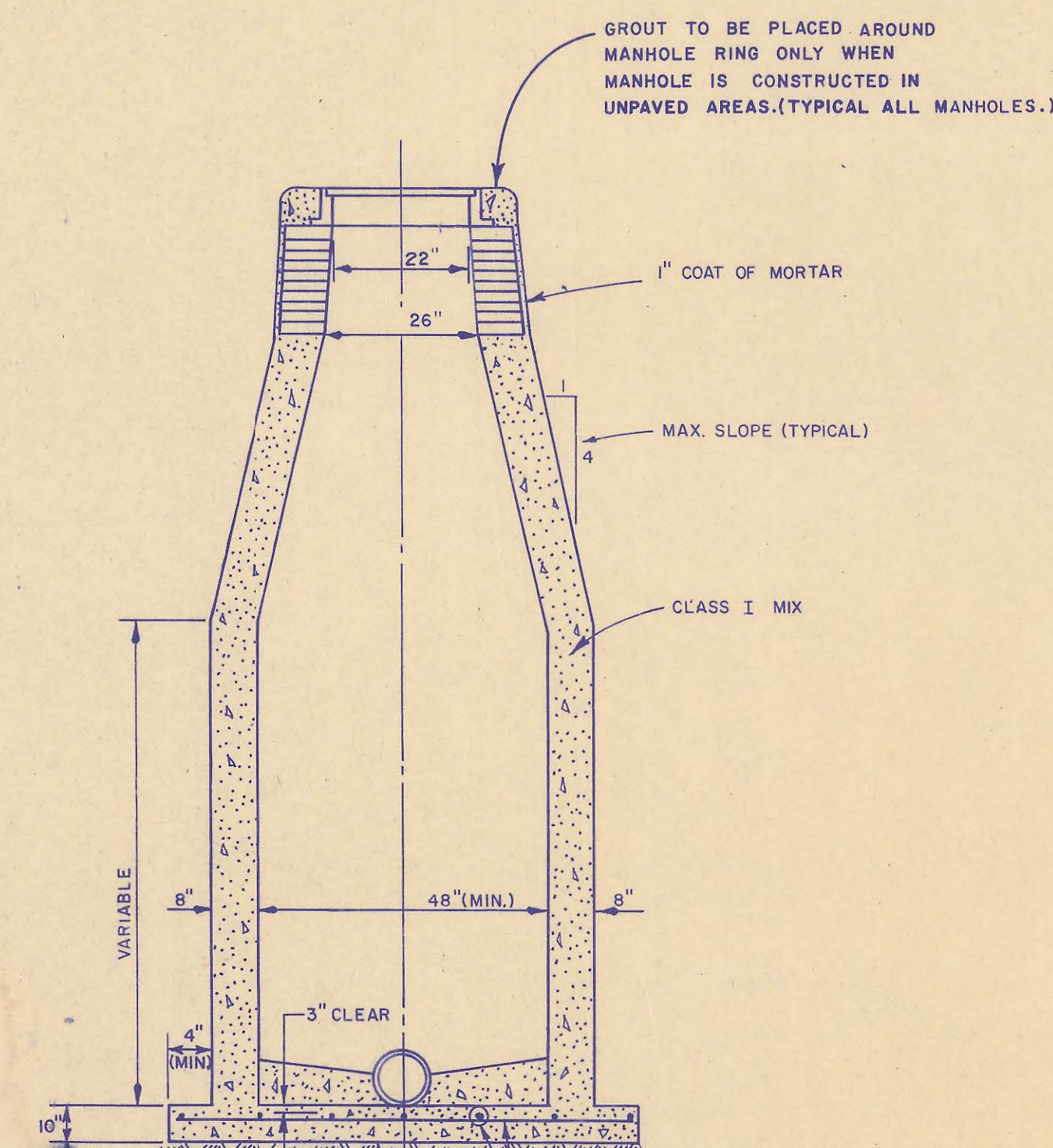
OUTSIDE CIRCUMFERENCE OF COVER AND THE INNER FACE AND SEAT OF RING TO BE MACHINE FIT



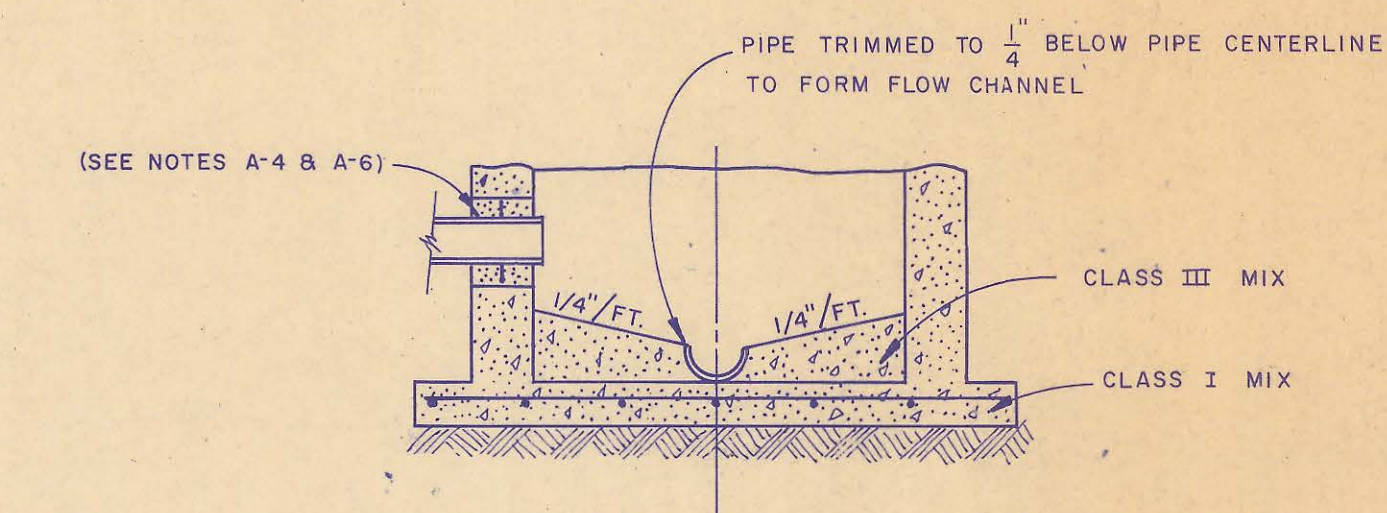
MANHOLE



CAST IN PLACE
OUTSIDE DROP MANHOLE
TYPE "E-C"



SECTION X



SECTIONAL ELEVATION-INVERT

PRECAST MANHOLES

PRECAST MANHOLES MAY BE SUBSTITUTED FOR THE 8" THICK CAST-IN-PLACE MANHOLES. THE MANHOLE BASE AND OUTSIDE MANHOLE PIPE SUPPORTS FOR PRECAST MANHOLES WILL BE THE SAME AS SHOWN FOR CAST-IN-PLACE MANHOLES.

NOTES

- A. MANHOLES
1. IF, IN THE OPINION OF THE ENGINEER, THE MANHOLE SUBGRADE APPEARS UNSTABLE, THE CONTRACTOR HAS THE OPTION TO COMPACT SUBGRADE AS SHOWN OR INCREASE THE THICKNESS OF THE MANHOLE BASE AS DIRECTED BY THE ENGINEER.
2. STEEL REINFORCING WILL BE REQUIRED IN ALL MANHOLE BASES.
3. MORTAR USED IN MASONRY CONSTRUCTION TO BE CLASS III MIX.
4. WHEN OPENINGS ARE CUT IN MANHOLE WALL FOR PIPE, THE PIPE WILL BE GROUTED IN PLACE WITH NON-SHRINKING GROUT. EXTERIOR OF COMPLETED CONNECTION TO BE SEALED WITH APPROVED COATING.
5. ~~CAST-IN-PLACE CIRCULAR CONCRETE MANHOLES TO BE CONSTRUCTED ONLY ON SEWER SUBJECT TO DETERIORATION DUE TO FORMATION OF HYDROGEN SULFIDE GAS AND TO CORROSION WHERE IT IS OBVIOUS THAT ADJUSTMENT OF MANHOLE TOP POSITION WHICH MAY BE NECESSARY DOES NOT REQUIRE MODIFICATION OF THE CONCRETE BARREL.~~
6. APPROVED FLEXIBLE WATERSTOP GASKETS SHALL BE INSTALLED TO JOIN THE SEWER TO THE MANHOLE WALL WHEN A.B.S. COMPOSITE PIPE, POLYETHYLENE PIPE, OR P.V.C. PIPE IS USED. FOR OTHER TYPES OF PIPE THE SEWER EXTENDING FROM MANHOLES SHALL BE SUPPORTED WITH CONCRETE TO THE FIRST JOINT OF PIPE FROM THE MANHOLE WALL. CONCRETE SUPPORTS MAY BE DELETED PROVIDED AN APPROVED FLEXIBLE WATERSTOP GASKET IS INSTALLED TO JOIN THE SEWER TO THE MANHOLE WALL.
7. PRECAST MANHOLES SHALL BE SET 4 INCHES INTO THE MANHOLE BASE.

STANDARD MANHOLES TYPE "E-A", "E-B", AND "E-C" MAY BE BID IN LIEU OF STANDARD MANHOLES "A and AA", "B and BB", AND "C and CC", RESPECTIVELY.

AS CONSTRUCTED
ENG. *MDS* DATE *12/10/81*
ENG. _____ DATE _____



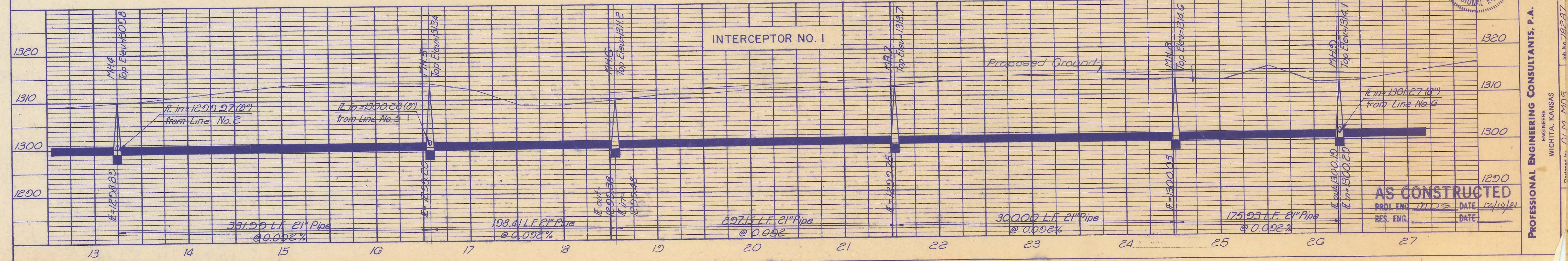
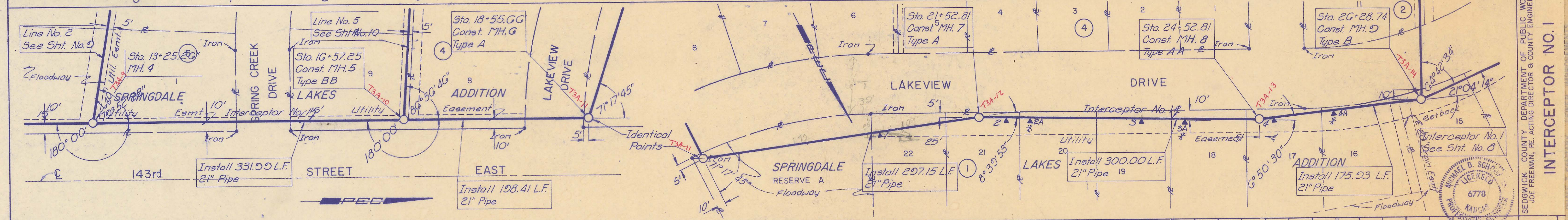
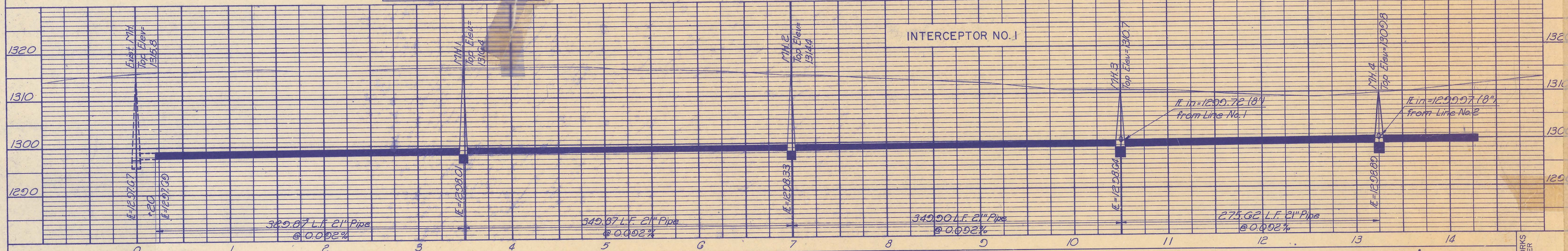
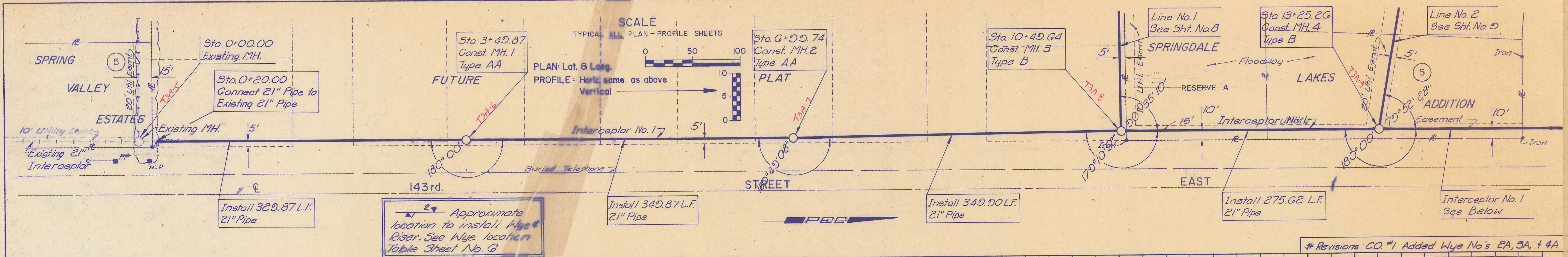
| No. | Revision | By | Date |
|-----|----------|----|------|
| | | | |

SEDGWICK COUNTY DEPARTMENT OF PUBLIC WORKS
JOE FREEMAN, PE, ACTING DIRECTOR & COUNTY ENGINEER

SANITARY SEWER DETAILS
PHASE I
SANITARY SEWER IMPROVEMENTS
SPRINGDALE LAKES ADDITION, SEDGWICK COUNTY, KANSAS

PROFESSIONAL ENGINEERING CONSULTANTS, P.A.
ENGINEERS
WICHITA, KANSAS

Designed by *DLM, MDS* Job No. *78287*
Drawn by *SC* Date *April, 1980* Sht. 5 of 10

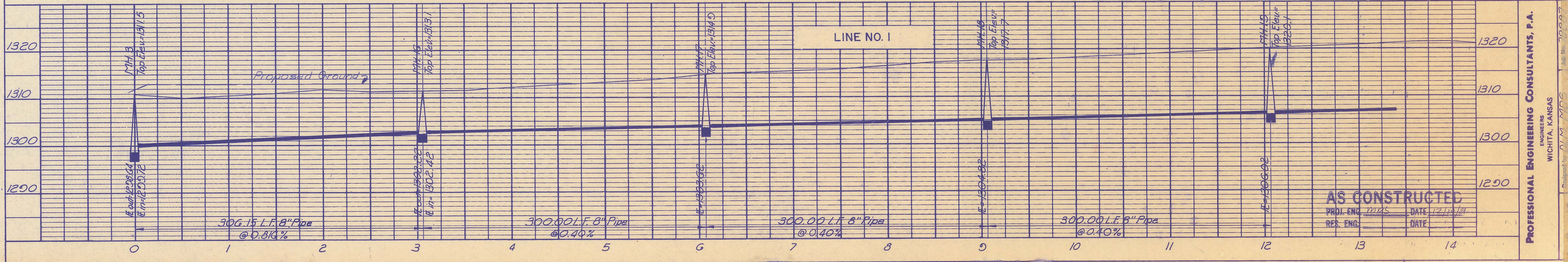
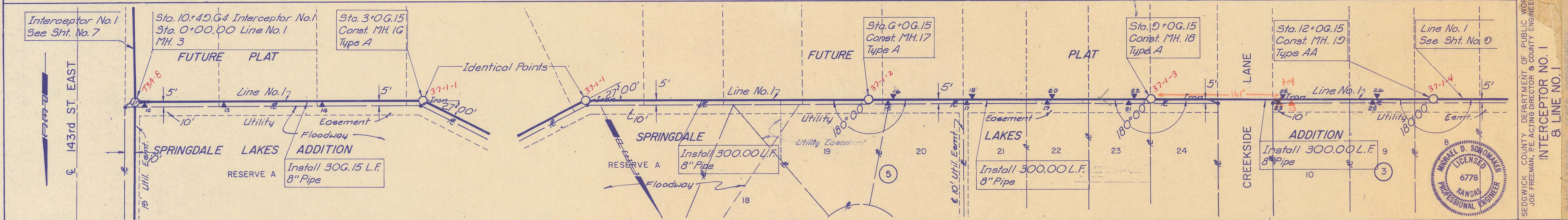
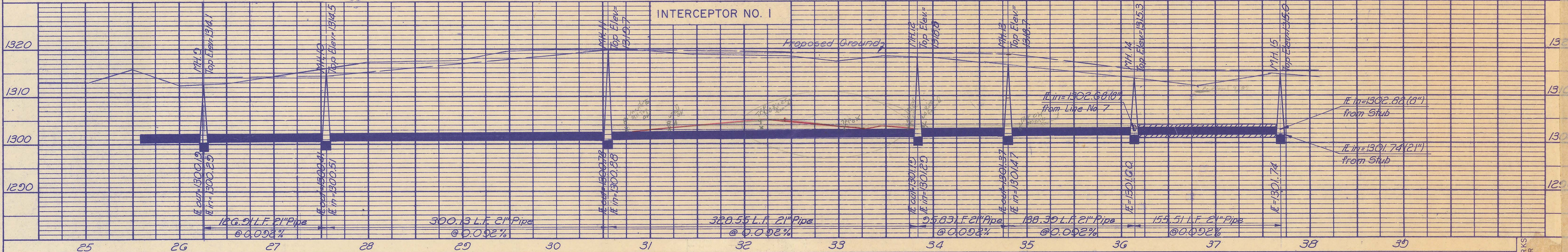
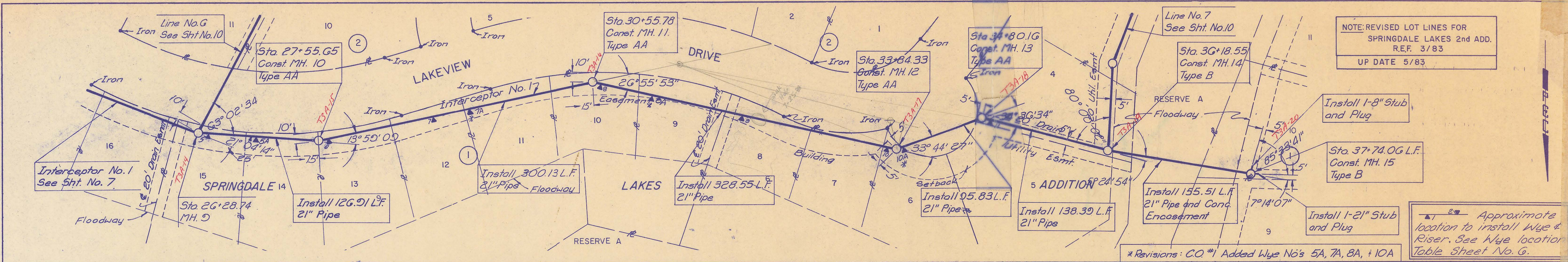


* Revisions: CO #1 Added Wye No's EA, 3A, & 4A



PROFESSIONAL ENGINEERING CONSULTANTS, P.A.
 ENGINEERS
 WICHITA, KANSAS
 Department No. 01 M MTS
 Job No. 78297
 SEDGWICK COUNTY DEPARTMENT OF PUBLIC WORKS
 JOE FREEMAN, PE, ACTING DIRECTOR & COUNTY ENGINEER
INTERCEPTOR NO. 1

AS CONSTRUCTED
 PROJ. ENG. MDS DATE 12/10/11
 RES. ENG. DATE

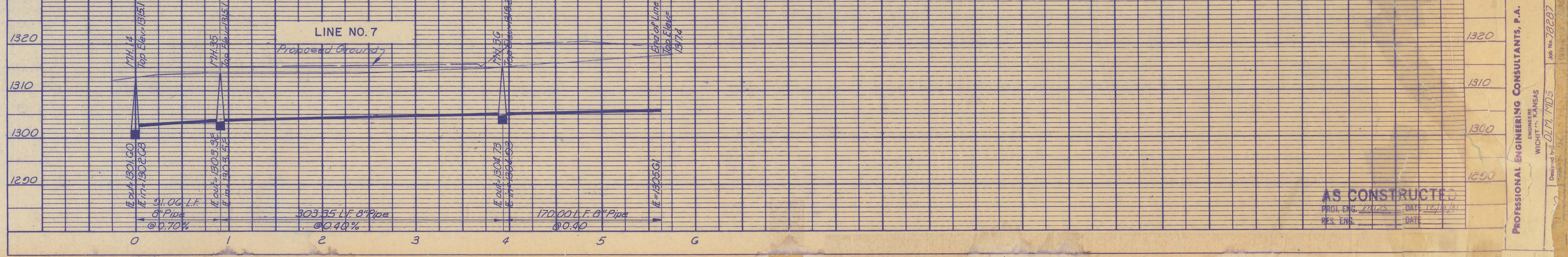
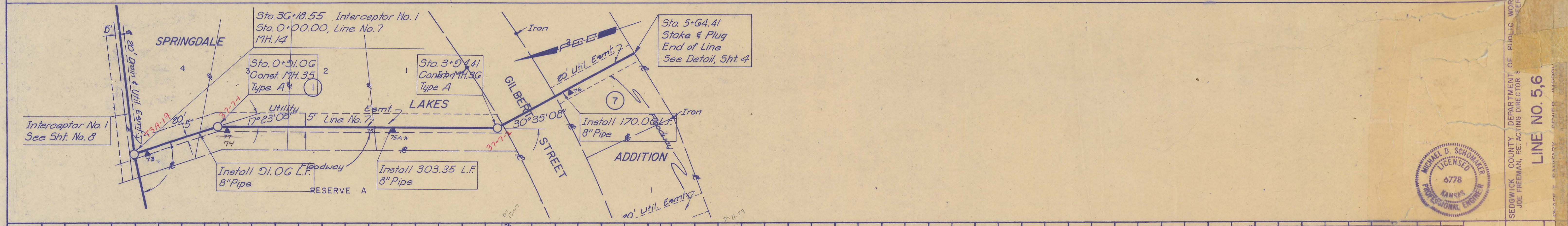
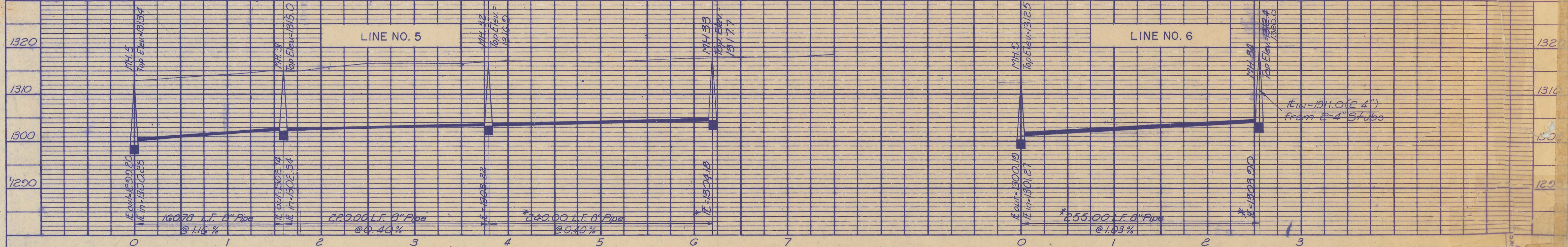
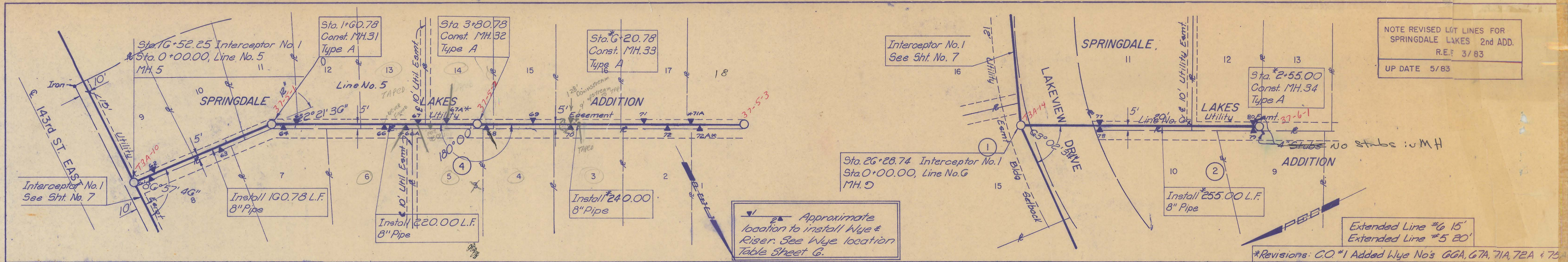


AS CONSTRUCTED
 PROJ. ENG. *[Signature]* DATE 12/18/21
 RES. ENG. DATE



PROFESSIONAL ENGINEERING CONSULTANTS, P.A.
 ENGINEERS
 WICHITA, KANSAS
 SEDGWICK COUNTY DEPARTMENT OF PUBLIC WORKS
 JOE FREEMAN, PE, ACTING DIRECTOR & COUNTY ENGINEER
INTERCEPTOR NO. 1 & LINE NO. 1

NOTE REVISED LOT LINES FOR
 SPRINGDALE LAKES 2nd ADD.
 R.E. 3/83
 UP DATE 5/83



*Revisions: CO. #1 Added Wye No's 6GA, 6TA, 71A, 7EA & 75



SEDGWICK COUNTY DEPARTMENT OF PUBLIC WORKS
 JOE FREEMAN, REACTING DIRECTOR
 LINE NO. 5, 6
 PROFESSIONAL ENGINEERING CONSULTANTS, P.A.
 ENGINEERS
 WICHITA, KANSAS
 Designed by: D.M. MD5
 Job No. 28287

AS CONSTRUCTED
 PROJ. ENG. 12/25 DATE 12/18/81
 RES. ENG. DATE