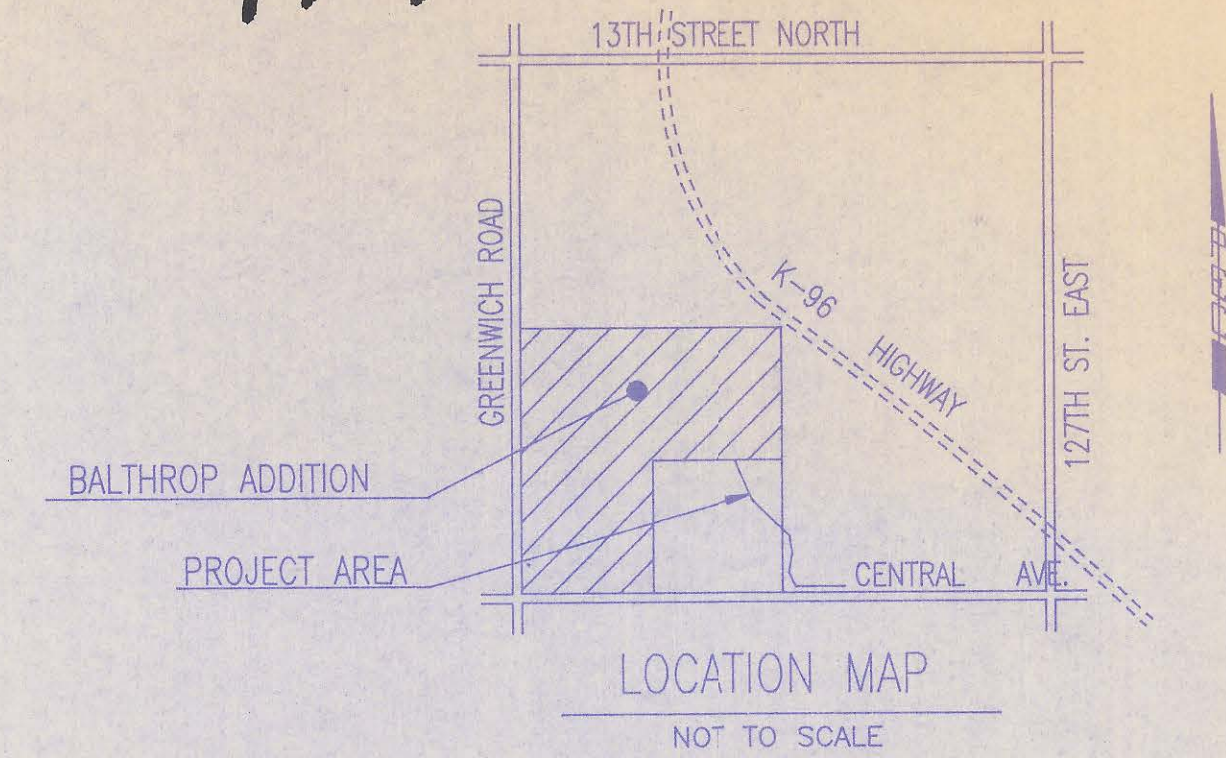


4MC-053

BUREAU OF PUBLIC SERVICES



INDEX OF SHEETS

SHEET NO. 1	TITLE SHEET
SHEET NO. 2	GENERAL NOTES
SHEET NO. 3	KEY MAP
SHEET NO. 4	PLAN
SHEET NO. 5	PRECAST MANHOLE DETAILS
SHEET NO. 6	BACKFILL DETAILS
SHEET NO. 7	SERVICE CONNECTION DETAILS
SHEET NO. 8-12	PLAN/PROFILE

CONSTRUCTION PLANS FOR SANITARY SEWER IMPROVEMENTS TO SERVE UNPLATTED LAND IN THE S.W.1/4 & S.E.1/4, S.15, T.27S., R.2E.

AND
BALTHROP ADDITION
TO SEDGWICK COUNTY, KANSAS
(GENERAL PHASE AND PHASE I)

OCTOBER 1995

PROFESSIONAL ENGINEERING CONSULTANTS, P.A.
ENGINEERS
WICHITA, KANSAS



APPROVED:

David C. Spears
DAVID C. SPEARS, P.E.
DIRECTOR OF PUBLIC SERVICES/COUNTY ENGINEER
DATE: 4/1/96

APPROVED:

James D. White
CHAIRMAN, BOARD OF COUNTY COMMISSIONERS
DATE:

FILED IN THE OFFICE OF THE SEDGWICK COUNTY CLERK

David C. Spears
COUNTY CLERK
DATE: 4/4/96

RECORD DRAWING
DATE: 4/14/97
RES. ENG. DATE:

4MC-053

GENERAL NOTES

1. ALL ELEVATIONS SHOWN ARE USGS DATUM.
2. AT LEAST 72 HOURS PRIOR TO BEGINNING ANY EXCAVATION (EXCLUDING WEEKENDS AND HOLIDAYS), THE CONTRACTOR SHALL CONTACT THE KANSAS ONE-CALL SYSTEM, A UTILITY LOCATION SERVICE, AT 687-2470 TO REQUEST THE FOLLOWING UTILITY COMPANIES TO LOCATE ANY EXISTING LINES WITHIN THE PROJECT AREA: MULTIMEDIA CABLE TV, WICHITA WATER, SOUTHWESTERN BELL TELEPHONE, K G & E GAS, AND K G & E ELECTRIC.
3. THE BURIED UTILITIES AS SHOWN ON THE PLANS ARE APPROXIMATE LOCATIONS ONLY. IT SHOULD BE NOTED THAT OTHER BURIED LINES AND CABLES MAY EXIST WHICH ARE NOT SHOWN ON THESE PLANS. THE CONTRACTOR SHALL EXERCISE EXTREME CAUTION DURING TRENCHING OPERATIONS TO AVOID DAMAGING THESE LINES. ANY LINES DAMAGED SHALL BE REPLACED OR REPAIRED IMMEDIATELY AS DIRECTED BY THE ENGINEER AT THE CONTRACTOR'S EXPENSE.
4. AT LEAST 24 HOURS BEFORE CONNECTING NEW SEWER PIPE TO THE EXISTING SEWAGE SYSTEM, THE CONTRACTOR SHALL CONTACT THE SEDGWICK COUNTY EASTERN SEWER DISTRICT (733-0202). THE CONTRACTOR SHALL KEEP ANY CONSTRUCTION DEBRIS FROM ENTERING THE EXISTING SANITARY SEWER DURING CONSTRUCTION. TO PREVENT WATER OR DEBRIS FROM ENTERING THE EXISTING SEWER, A MECHANICAL PLUG SHALL BE INSTALLED AND MAINTAINED TO ISOLATE THE EXISTING SEWER FROM THE NEW CONSTRUCTION UNTIL THE NEW CONSTRUCTION IS CLEANED, TESTED, AND HAS BEEN ACCEPTED. THE WATER USED FOR CLEANING SHALL NOT BE ADDED TO THE FLOW OF THE EXISTING SEWER. THE CLEANING OR OTHERWISE ACCUMULATED WATER SHALL BE PUMPED OR OTHERWISE REMOVED PRIOR TO TELEVISION.
5. ALL PIPE JOINTS SHALL BE LAID AND PUSHED "FULL HOME" WITH THE BEVELED END OF THE SPIGOT MAKING FULL CONTACT WITH THE CHAMFERED AREA AT THE THROAT OF THE BELL OR SOCKET, WITH NO SEPARATION BETWEEN THEM. IF SEPARATION IS DETERMINED, THE PIPE SHALL BE EXCAVATED AND RE-LAID ACCORDING TO SPECIFICATIONS AT THE CONTRACTORS EXPENSE.
6. APPROVED EXCESS EXCAVATION WHICH IS TO BE WASTED SHALL BE STOCKPILED WITHIN THE BALTHROP ADDITION AT NO ADDITIONAL COST TO THE OWNER. STOCKPILE LOCATIONS SHALL BE AS DIRECTED BY MR. JACK RITCHIE, RITCHIE ASSOCIATES INC., AT (316) 684-7300 AND IN ACCORDANCE WITH GENERAL NOTE NO. 18. NO ACCEPTABLE EXCAVATED MATERIAL SHALL BE REMOVED FROM THE BALTHROP ADDITION.
7. THE CONTRACTOR SHALL CONTAIN HIS OPERATIONS TO PERMIT TRAFFIC THROUGH AND ACROSS CONSTRUCTION AT EXISTING ROADWAYS AT ALL TIMES. THE CONTRACTOR SHALL ERECT WARNING SIGNS, FLASHING LIGHTS, AND BARRICADES IN COMPLIANCE WITH THE MANUAL ON UNIFORM TRAFFIC CONTROL DEVICES TO ENSURE SAFETY AS DIRECTED IN THE GENERAL CONDITIONS. THE CONTRACTOR SHALL LIMIT THE EXTENT OF TRENCH TO REMAIN OPEN OVERNIGHT AND WEEKENDS TO LESS THAN 50 FEET.
8. THE CONTRACTOR SHALL BE RESPONSIBLE FOR PRESERVING PROPERTY IRONS. THE CONTRACTOR SHALL BE REQUIRED TO RE-ESTABLISH ANY PROPERTY IRONS WHICH ARE DAMAGED OR DESTROYED BY HIS CONSTRUCTION OPERATIONS. SUCH IRONS SHALL BE RE-ESTABLISHED BY A LICENSED LAND SURVEYOR IN ACCORDANCE WITH STATE LAWS. PRIOR TO START OF CONSTRUCTION THE CONTRACTOR SHALL FLAG AND REFERENCE ALL PROPERTY CORNERS THAT MAY BE DISTURBED BY CONSTRUCTION OPERATIONS, AND VERIFY THESE IN THE FIELD IN THE PRESENCE OF THE ENGINEER AND THE CONTRACTOR'S SURVEYOR. AFTER CONSTRUCTION AND BEFORE THE FINAL INSPECTION, A LETTER SIGNED AND SEALED BY THE LICENSED LAND SURVEYOR CERTIFYING REPLACEMENT OF ALL DISTURBED PROPERTY CORNERS SHALL BE SUBMITTED TO THE ENGINEER.
9. THE CONTRACTOR SHALL RESTORE ALL DITCHES, SWALES, ROAD SHOULDERS, AND BANKS TO THEIR ORIGINAL SLOPES AND GRADES. WHERE EXISTING ENTRANCE PIPE, DRAINAGE PIPE, SIGNS, FENCES, ETC., CONFLICT WITH THE PROPOSED WORK HEREIN, THEY SHALL BE REMOVED AND REPLACED OR RESET UNLESS OTHERWISE INDICATED ON THE PLANS. THE REPLACEMENT OF ALL THE AFOREMENTIONED ITEMS, INCLUDING SEEDING, FERTILIZER, AND MULCHING SHALL BE CONSIDERED SUBSIDIARY TO "SITE CLEARING AND RESTORATION".
10. EASEMENTS AND RIGHTS-OF-WAY PROVIDED BY THE OWNER FOR THE PROJECT ARE SHOWN IN THE PLANS. THE CONTRACTOR SHALL BE RESPONSIBLE FOR THE ACQUISITION OF ANY ADDITIONAL TEMPORARY EASEMENTS OR RIGHTS-OF-WAY THAT HE DESIRES TO USE IN COMPLETING THE WORK.
11. POSITIVE DRAINAGE SHALL BE PROVIDED FOR ALL AREAS ON OR NEAR SPOIL AREAS. NATURAL DRAINAGE WAYS SHALL BE MAINTAINED.
12. THE CONTRACTOR SHALL PROVIDE POSITIVE DRAINAGE AWAY FROM ALL MANHOLE COVERS.
13. THE CONTRACTOR SHALL GIVE ALL PROPERTY OWNERS AND/OR TENANTS OF DEVELOPED PROPERTY ABUTTING THE CONSTRUCTION OF THIS PROJECT A MINIMUM OF 10 DAYS ADVANCE NOTICE PRIOR TO START OF CONSTRUCTION IN THE VICINITY OF THE AFFECTED PROPERTY.
14. ALL TRENCH BACKFILL SHALL BE EITHER TYPE I OR TYPE III UNLESS NOTED OTHERWISE.
15. THE CONTRACTOR SHALL ALSO CONTACT THE FOLLOWING AT LEAST 72 HOURS PRIOR TO BEGINNING CONSTRUCTION TO ADVISE THEM OF THE INTENDED WORK AND OF HIS PROPOSED SCHEDULE:
 SEDGWICK COUNTY BUREAU OF PUBLIC SERVICES
 1250 S. SENECA
 WICHITA, KS 67213
 MR. JIM WEBER
 (316) 383-7901
16. THE CONTRACTOR SHALL NOT BURY MANHOLES THAT HAVE RIM ELEVATIONS WHICH ARE LOWER THAN EXISTING GROUND AT THE MANHOLE. THE GROUND AROUND SUCH MANHOLES SHALL BE GRADED AS SHOWN ON THE PLAN/PROFILE SHEETS. THE CONTRACTOR SHALL ALSO PROVIDE DRAINAGE AWAY FROM THESE MANHOLES BY CONSTRUCTION OF TEMPORARY DITCHES OR SLOPING THE GROUND AS REQUIRED. ALL COSTS FOR THIS WORK SHALL BE CONSIDERED SUBSIDIARY TO THE LUMP SUM PRICE BID FOR "SITE CLEARING AND RESTORATION".
17. THE CONTRACTOR SHALL AVOID REMOVAL OR TRIMMING OF ANY TREES WHERE POSSIBLE. WHERE THE CONTRACTOR BELIEVES THE REMOVAL OR TRIMMING IS UNAVOIDABLE, HE SHALL OBTAIN THE CONCURRENCE OF THE ENGINEER BEFORE PROCEEDING WITH SUCH WORK.
18. RUBBLE FROM THE REMOVAL OF MISCELLANEOUS STRUCTURES INCLUDING ANY TREES REMOVED, TREE TRIMMINGS, AND EXCESS EXCAVATION WHICH IS TO BE WASTED, SHALL BE DISPOSED OF ON SITES PROVIDED BY THE CONTRACTOR. THESE SITES SHALL ALSO BE APPROVED BY THE ENGINEER AS TO SUITABILITY, APPEARANCE, AND SITE LOCATION. ALL DISPOSAL SITES MUST BE APPROVED BY THE KANSAS DEPARTMENT OF HEALTH AND ENVIRONMENT. MATERIAL EITHER STOCKPILED OR DISPOSED OF IN A FLOODPLAIN WILL REQUIRE A KANSAS STATE BOARD OF AGRICULTURE PERMIT AND A FLOODPLAIN DEVELOPMENT PERMIT FROM SEDGWICK COUNTY. ANY MATERIALS DUMPED IN WATERS OF THE UNITED STATES OR WETLANDS IS SUBJECT TO U.S. CORPS OF ENGINEERS PERMITTING REGULATIONS. ANY MATERIALS BURIED OR STOCKPILED BEYOND APPROVED CONSTRUCTION LIMITS MAY REQUIRE ARCHAEOLOGICAL INVESTIGATIONS UNLESS BURIED IN A PREVIOUSLY APPROVED DISPOSAL LOCATION.
19. EACH BIDDER SHALL VISIT THE SITE OF THE PROJECT BEFORE SUBMITTING THE PROPOSAL FOR THIS WORK SO THAT HE WILL BE FULLY INFORMED OF THE EXISTING FIELD CONDITIONS AND THE OBSTACLES WHICH MIGHT BE ENCOUNTERED. UPON AWARD OF THE CONTRACT, THE CONTRACTOR WILL NOT BE GRANTED ANY ADDITIONAL COMPENSATION WITH REGARDS TO TIME AND MONEY FOR CONDITIONS THAT MAY HAVE BEEN EVALUATED DURING AN INSPECTION OF THE SITE.
20. THE CONTRACTOR SHALL SEED ALL AREAS DISTURBED BY CONSTRUCTION ACTIVITIES WITH TEMPORARY RYE GRASS. RYE GRASS SEED SHALL BE PLANTED AT A MINIMUM RATE OF SIX (6) POUNDS PER ONE THOUSAND (1,000) SQUARE FEET. THIS TEMPORARY SEEDING MAY BE OMITTED ONLY IF OTHER SEEDING IS REQUIRED IN ACCORDANCE WITH GENERAL NOTE NO. 9 ABOVE. TEMPORARY SEEDING OR PERMANENT SEEDING/SODDING SHALL BE APPLIED WITHIN 14 DAYS AFTER THE AREA HAS BEEN DISTURBED.

NOTICE

THE CONTRACTOR IS ADVISED THAT OTHER CONSTRUCTION AND GRADING PROJECTS ARE SCHEDULED TO BE UNDERWAY PRIOR TO OR CONCURRENTLY WITH THIS PROJECT. THESE INCLUDE, BUT ARE NOT LIMITED TO, THE FOLLOWING:

1. PAVING AND DRAINAGE IMPROVEMENTS IN BALTHROP ADDITION.
2. SITE GRADING, BUILDING CONSTRUCTION, AND PAVING FOR HOLY CROSS LUTHERAN CHURCH IN BALTHROP ADDITION.
3. WATERLINE CONSTRUCTION IN BALTHROP ADDITION AND ALONG GREENWICH ROAD AND CENTRAL AVENUE. (CITY OF WICHITA PROJECT NOS. 448-89015, 448-89016, AND 448-89017)

THE CONTRACTOR IS REQUIRED TO COORDINATE WITH AND/OR ACCOMMODATE OTHER CONTRACTORS WORKING IN THE VICINITY TO THE EXTENT POSSIBLE AND AS DIRECTED BY THE ENGINEER. THE CONTRACTOR WILL BE REQUIRED TO WORK AROUND IMPROVEMENTS CONSTRUCTED UNDER OTHER PROJECTS AND SHALL BE RESPONSIBLE FOR REPAIR OF DAMAGE TO IMPROVEMENTS IN PLACE. COSTS FOR COORDINATION AND REPAIRS TO IMPROVEMENTS IN PLACE, IF REQUIRED, SHALL BE BORNE BY THE CONTRACTOR.

RECORD DRAWING

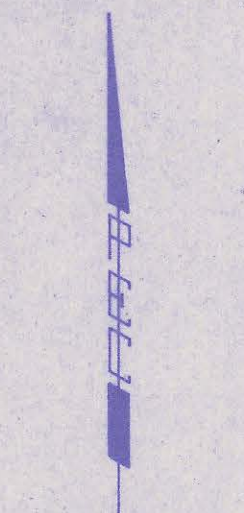
NDK PROJ. ENG. 1/14/97 DATE
 RES. ENG. _____ DATE

	No.	Revision	By	Date
	SEDGWICK COUNTY BUREAU OF PUBLIC SERVICES DAVID C. SPEARS, P.E. DIRECTOR, BUREAU OF PUBLIC SERVICES/COUNTY ENGINEER			
	GENERAL NOTES SANITARY SEWER IMPROVEMENTS BALTHROP ADDITION			
	PROFESSIONAL ENGINEERING CONSULTANTS, P.A. ENGINEERS WICHITA, KANSAS			
Designed by	HDF w/CED	Job No.	34-95560	Sht. 2 of 12
Drawn by	HDF w/CED	Date	October 1995	

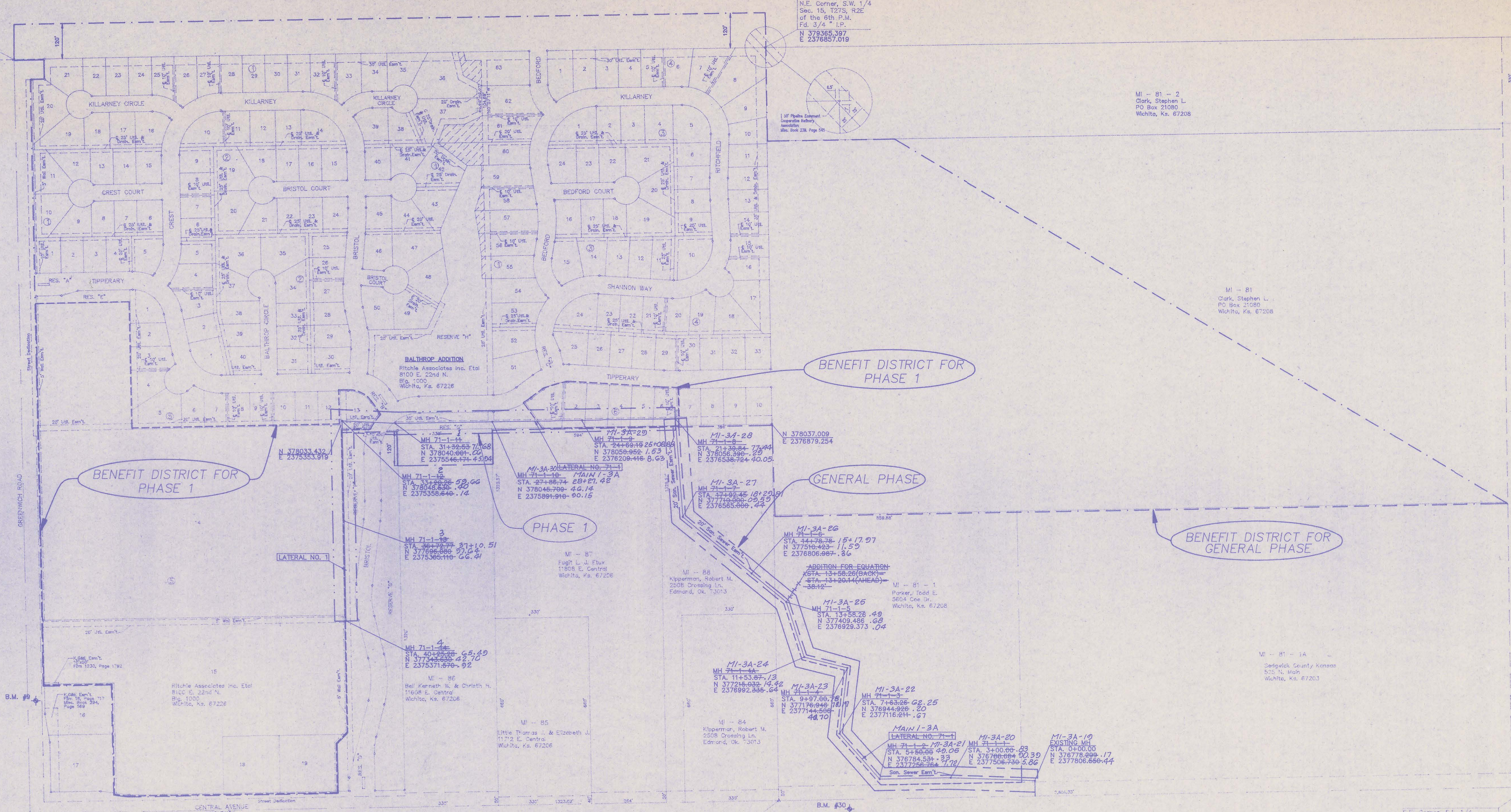
N.W. Corner, S.W. 1/4
Sec. 15, T27S, R2E
of the 6th P.M.
Pd. 1/2 I.P.
N 379321.252
E 2374202.834

N.E. Corner, S.W. 1/4
Sec. 15, T27S, R2E
of the 6th P.M.
Pd. 3/4 I.P.
N 379365.397
E 2376857.019

N.E. Corner, S.E. 1/4
Sec. 15, T27S, R2E
of the 6th P.M.



SCALE: 1" = 200'



S.W. Corner
Sec. 15, T27S, R2E
of the 6th P.M.
Pd. 1/2 I.P. in Thirdline
N 376665.258
E 2374255.810

S.E. Corner, S.W. 1/4
Sec. 15, T27S, R2E
of the 6th P.M.
Pd. #3 rebar w/ P.E.C. Cap
N 376706.620
E 2376901.489

S.E. Corner, S.E. 1/4
Sec. 15, T27S, R2E
of the 6th P.M.
N 376752.656
E 2376852.429

SUMMARY OF SURVEY COORDINATES FOR PROPOSED MANHOLE LOCATIONS		
DESCRIPTION	NORTHING	EASTING
MANHOLE NUMBER		
EXISTING MH 3A-MI-19 MI-3A-19	N 376778.999-1.17	E 2377806.550-4.44
MH 71-1-1 MI-3A-20	N 376788.664-20.39	E 2377506.730 5.86
MH 71-1-2 MI-3A-21	N 376784.534-9.33	E 2377256.764 1.72
MH 71-1-3 MI-3A-21	N 376944.826 .20	E 2377116.214 .67
MH 71-1-4 MI-3A-23	N 377176.946 8.17	E 2377144.606 3.70
MH 71-1-4 MI-3A-24	N 377215.632 4.42	E 2376992.335 .64
MH 71-1-5 MI-3A-25	N 377409.486 .68	E 2376929.373 .04
MH 71-1-6 MI-3A-26	N 377516.423 1.50	E 2376806.987 .36
MH 71-1-7 MI-3A-27	N 377740.900 09.59	E 2376565.900 .44
MH 71-1-8 MI-3A-28	N 378056.396 .29	E 2376338.724 40.05
MH 71-1-8 MI-3A-29	N 378056.952 51.83	E 2376299.416 08.63
MH 71-1-10 MI-3A-30	N 378045.709 46.14	E 2375891.910 00.15
MH 71-1-4-1	N 378040.909 .06	E 2375546.174 45.04
MH 71-1-4-2	N 378048.536 .40	E 2375358.640 .14
MH 71-1-4-3	N 377696.680 07.64	E 2375365.440 02.41
MH 71-1-4-4	N 377343.636 42.70	E 2375371.570 .92

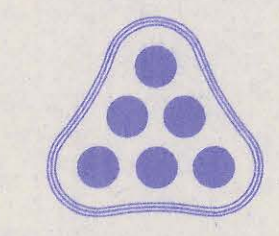
**KEY MAP
FOR
SANITARY SEWER MAIN EXTENSION
TO SERVE
BALTHROP ADDITION
SEDGWICK COUNTY, KANSAS**

BENCH MARK LIST

BM #30 - CHISELED "O" ON CENTER OF SOUTH HEADWALL OF RCB APPROXIMATELY 250 FT. EAST OF THE SOUTH 1/4 COR., SEC. 15, T.27 S., T.2 E. ELEV. = 1349.06
BM#9 - CHISELED "O" ON CENTER OF EAST HEADWALL OF RCB UNDER GREENWICH ROAD APPROXIMATELY 400 FEET NORTH OF C.L. CENTRAL AVENUE. ELEV. = 1369.86

RECORD DRAWING
MDK PROJ. ENG. 11/14/97 DATE
RES. ENG. DATE

1	REVISED ALIGNMENT FOR SANITARY SEWER	HF	3-9-96
No.	Revision	By	Date
SEDGWICK COUNTY BUREAU OF PUBLIC SERVICES DAVID C. SPEARS, P.E. DIRECTOR, BUREAU OF PUBLIC SERVICES/COUNTY ENGINEER			
KEY MAP SANITARY SEWER IMPROVEMENTS BALTHROP ADDITION			
PROFESSIONAL ENGINEERING CONSULTANTS, P.A. ENGINEERS WICHITA, KANSAS			
Designed by	HDF	Job No.	34-95560
Drawn by	HDF	Date	September 1995
			Sht. 3 of 12



BALTHROP ADDITION TO SEDGWICK COUNTY, KANSAS

SCALE: 1" = 150'

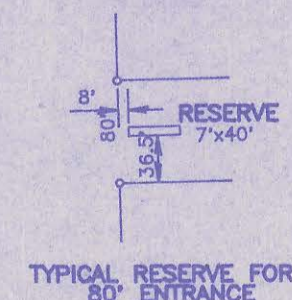
○ = IRON SET
BSL = BUILDING SETBACK LINE
C.A.C. = COMPLETE ACCESS CONTROL

▨ DRAINAGE EASEMENT

B.M. — CHISELED " " IN CENTER CONCRETE HEADWALL TO R.C.B. 24.5' SOUTH AND 56.7' WEST OF THE INTERSECTION OF THE CENTERLINES OF CENTRAL AND GREENWICH.
ELEV. 188.828 CITY DATUM

MINIMUM PAD ELEVATIONS (LOWEST OPENING) AS FOLLOWS:

LOTS 36-63, BLOCK 1 = ELEV. 1362.00 M.S.L.
LOTS 14&15, BLOCK 5 = ELEV. 1362.00 M.S.L.



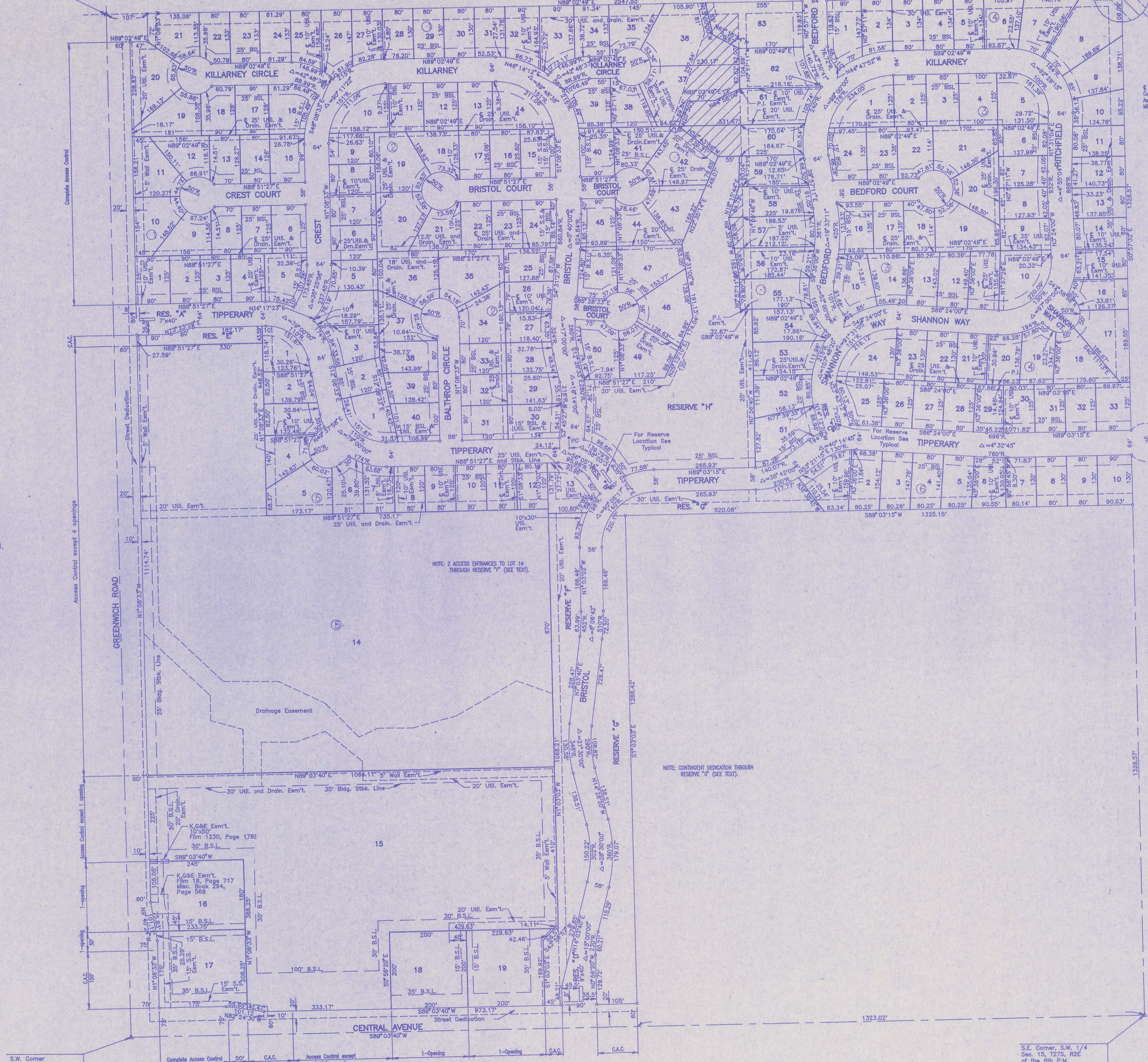
S.W. Corner
Sec. 15, T27S, R2E
of the 6th P.M.
Pd. 1/2" LP. In Triangle

S.E. Corner, S.W. 1/4
Sec. 15, T27S, R2E
of the 6th P.M.
Pd. #5 rebar w/ P.E.C. Cap

N.W. Corner, S.W. 1/4
Sec. 15, T27S, R2E
of the 6th P.M.
Pd. 1" LP.

N.E. Corner, S.W. 1/4
Sec. 15, T27S, R2E
of the 6th P.M.
Pd. 3/4" LP.

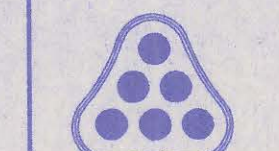
5" Pipe Edge
Cooperative Refinery
Association
Map Book 234, Page 545



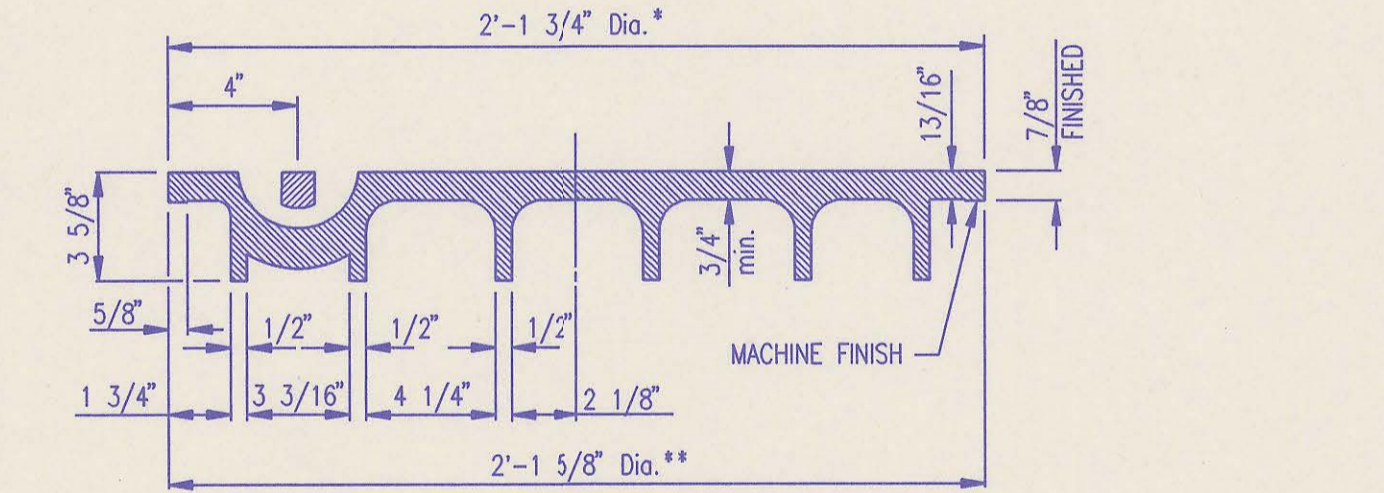
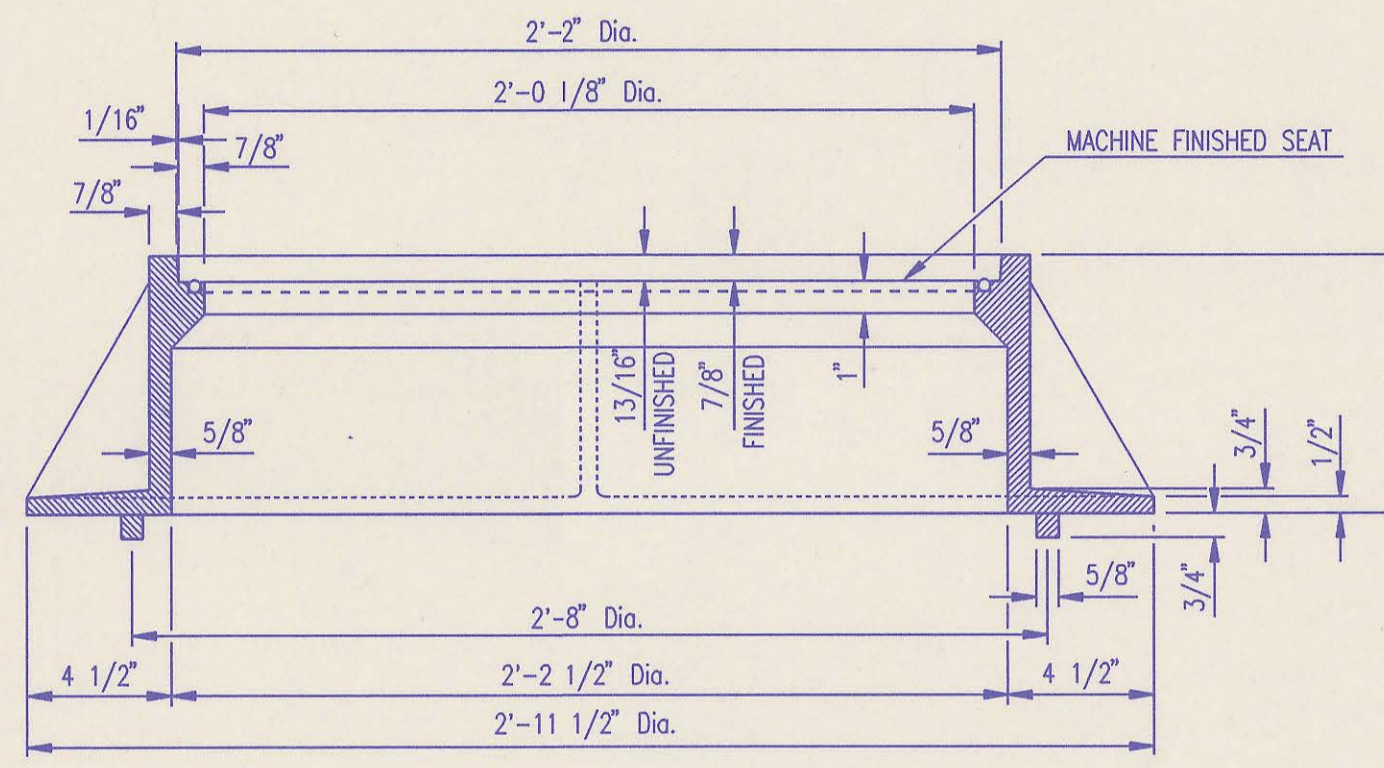
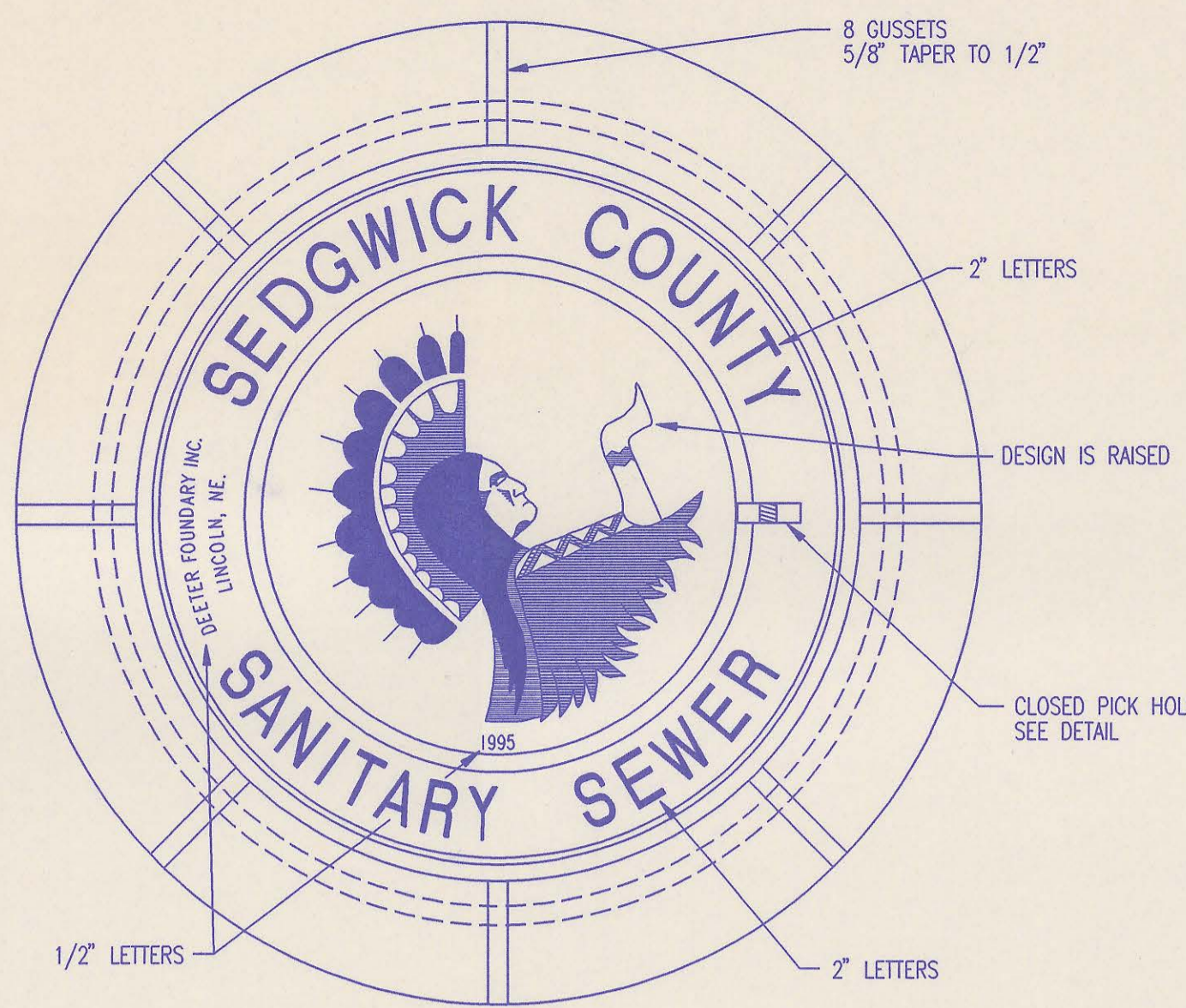
NOTE: ACCESS ENTRANCES TO LOT 14 THROUGH RESERVE "H" (SEE TEXT).

NOTE: CONTINGENT DEDICATION THROUGH RESERVE "G" (SEE TEXT).

Temporary Cut-off-ditch by Separate Instrument



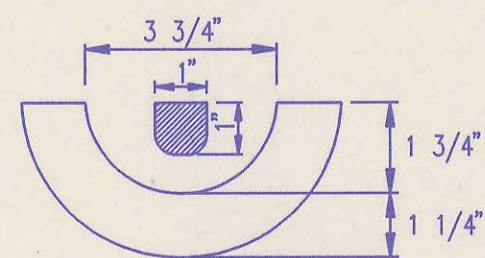
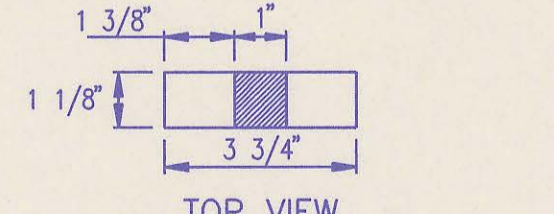
No.	Revision	By	Date
SEDGWICK COUNTY BUREAU OF PUBLIC SERVICES DAVID C. SPEARS, P.E. DIRECTOR, BUREAU OF PUBLIC SERVICES/COUNTY ENGINEER			
PLAT SANITARY SEWER IMPROVEMENTS BALTHROP ADDITION			
PROFESSIONAL ENGINEERING CONSULTANTS, P.A. ENGINEERS WICHITA, KANSAS			
Designed by	HDF w/CEd	Job No.	34-95560
Drawn by	HDF w/CEd	Date	October 1995
			Sheet 4 of 12



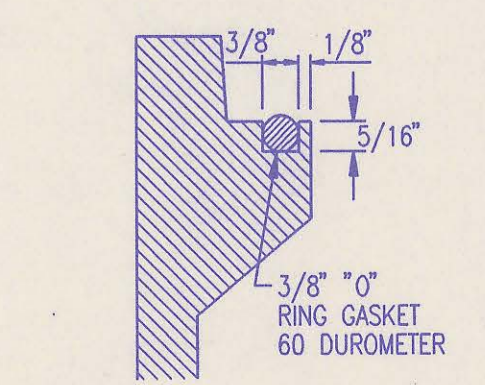
MANHOLE FRAME AND COVER
(TOTAL WEIGHT = 430 LBS.)

MANHOLE FRAME AND COVER NOTES

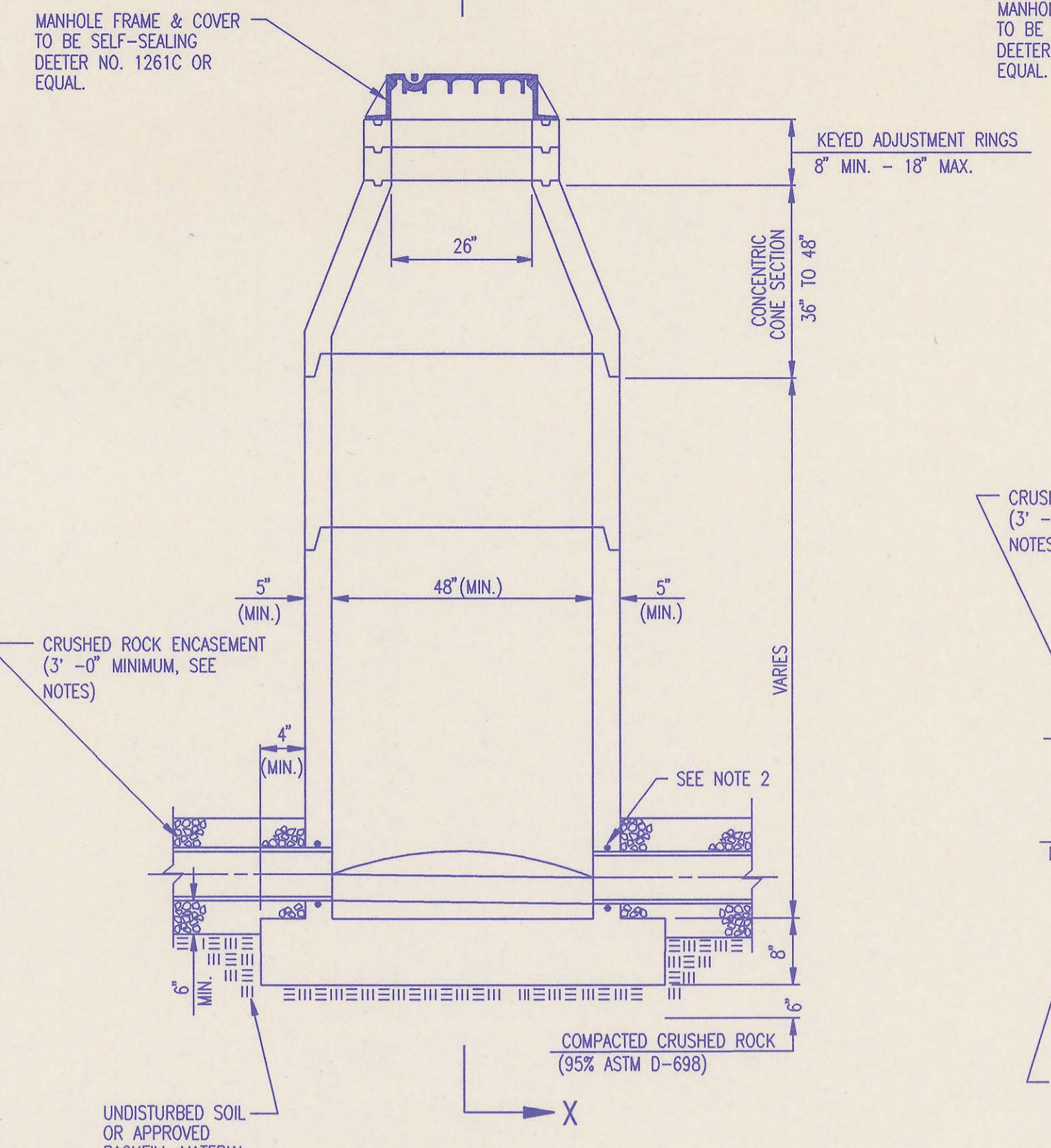
1. CAST IRON MANHOLE FRAME AND COVER SHALL CONFORM TO ASTM A-48, CLASS 350, OR BETTER.
2. CASTINGS ARE TO BE MANUFACTURED TRUE TO PATTERN AND WITH SATISFACTORY FIT OF COMPONENT PARTS. CASTINGS SHALL BE FREE OF DEFECTS AND ALL SURFS SHALL BE GRIND SMOOTH. DIMENSIONS AS DETAILED ON PLAN SHALL NOT DEVIATE BY $\pm 1/16$ " PER FOOT.
3. NO OTHER LETTERING OR MARKINGS OTHER THAN THOSE DETAILED ON PLAN WILL BE PERMITTED ON CASTINGS.
4. CASTINGS MUST BE DOMESTICALLY MANUFACTURED IN THE UNITED STATES OF AMERICA.
5. THE FRAMES AND COVERS SHALL BE FURNISHED WITH MACHINED HORIZONTAL BEARING SURFACES SO FITTING PARTS WILL NOT RATTLE OR ROCK UNDER TRAFFIC.
6. MANHOLE CASTINGS SHALL BE SELF-SEALING DEETER FOUNDRY INC. NO. 1261C OR APPROVED EQUAL, UNLESS OTHERWISE SPECIFIED IN THE SPECIAL CONDITIONS. (MINIMUM WT. = 430 LBS.) ALL MANHOLE CASTINGS SHALL BE CONSIDERED SUBSIDIARY TO THE UNIT PRICES BID FOR THE VARIOUS MANHOLE TYPES.
7. THE MANUFACTURER SHALL SUBMIT SHOP DRAWINGS TO THE ENGINEER FOR APPROVAL PRIOR TO MANUFACTURE. THE ENGINEER SHALL RETAIN THE RIGHT TO REJECT CASTINGS NOT CONFORMING TO THE SPECIFICATIONS OR THE APPROVED SHOP DRAWINGS.
8. THE MANHOLE FRAME SHALL BE FURNISHED WITH AN APPROVED CONTINUOUS "O" RING GASKET GROOVED INTO THE BEARING SURFACE OF THE MANHOLE FRAME (PER DETAIL). THE "O" RING GASKET SHALL BE FACTORY INSTALLED IN THE MANHOLE FRAME WITH 100% SILICON SEALANT-DOW CORNING OR EQUAL.



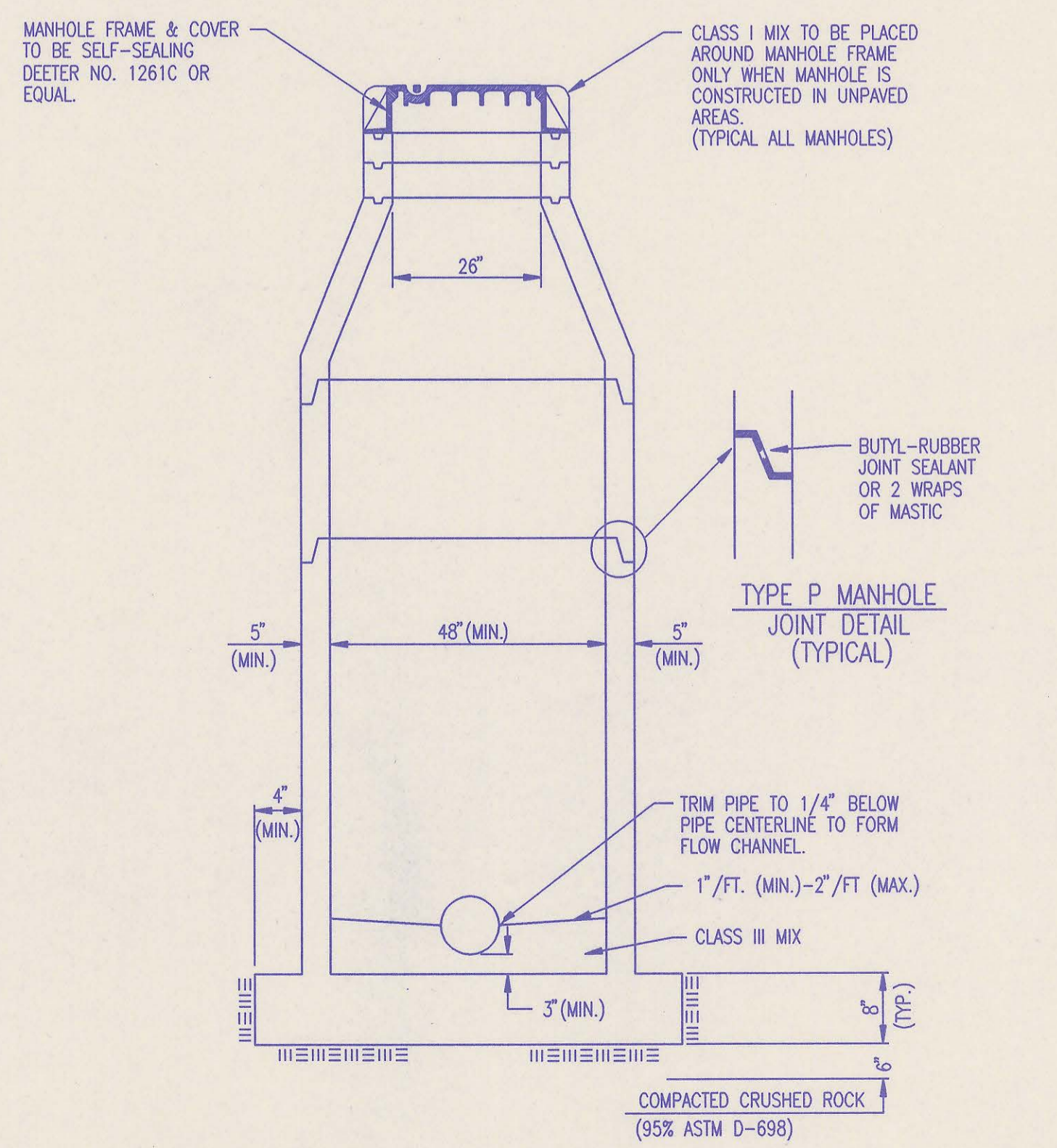
SECTION VIEW PICK HOLE DETAIL



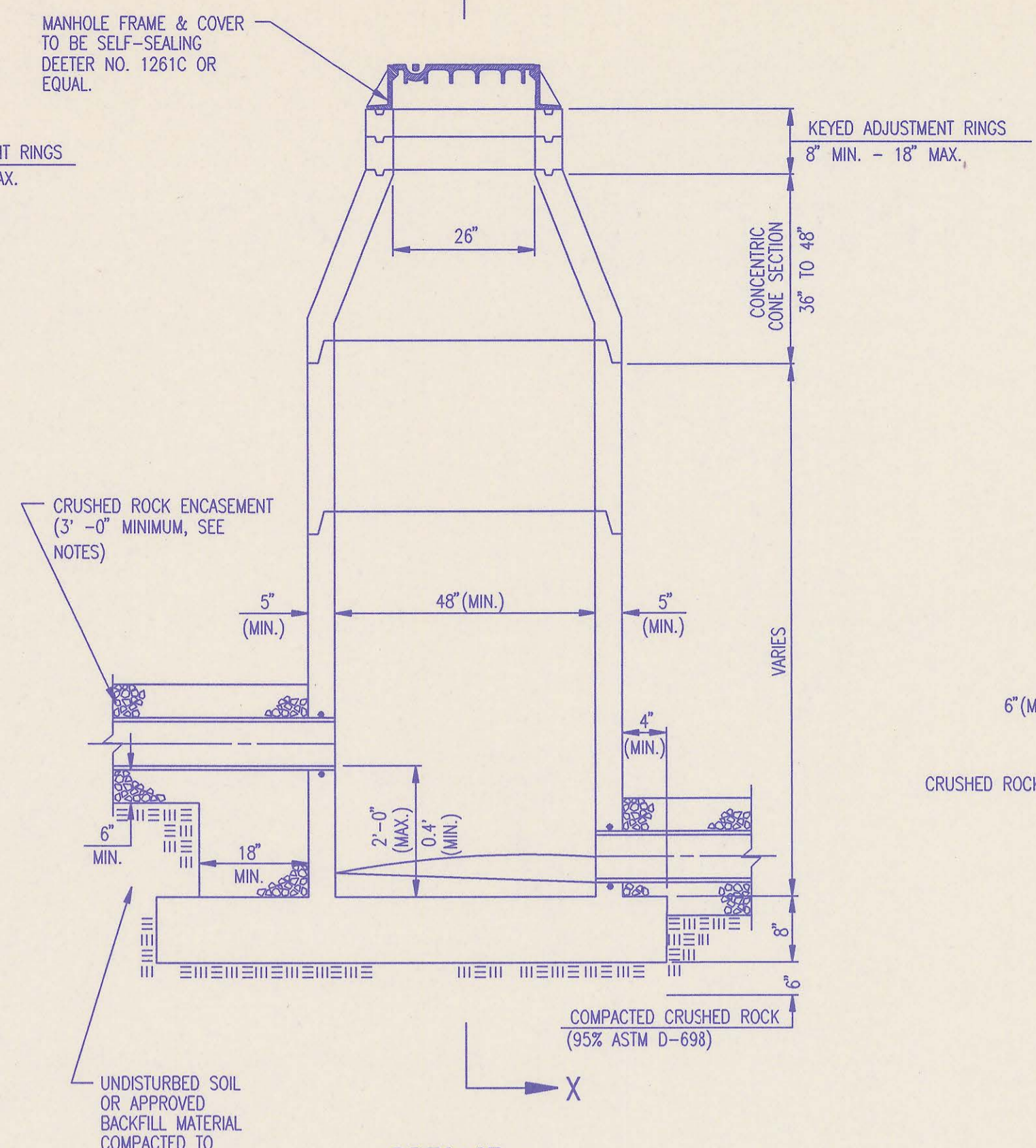
FRAME GROOVING DETAIL (TYPICAL ALL MANHOLES)



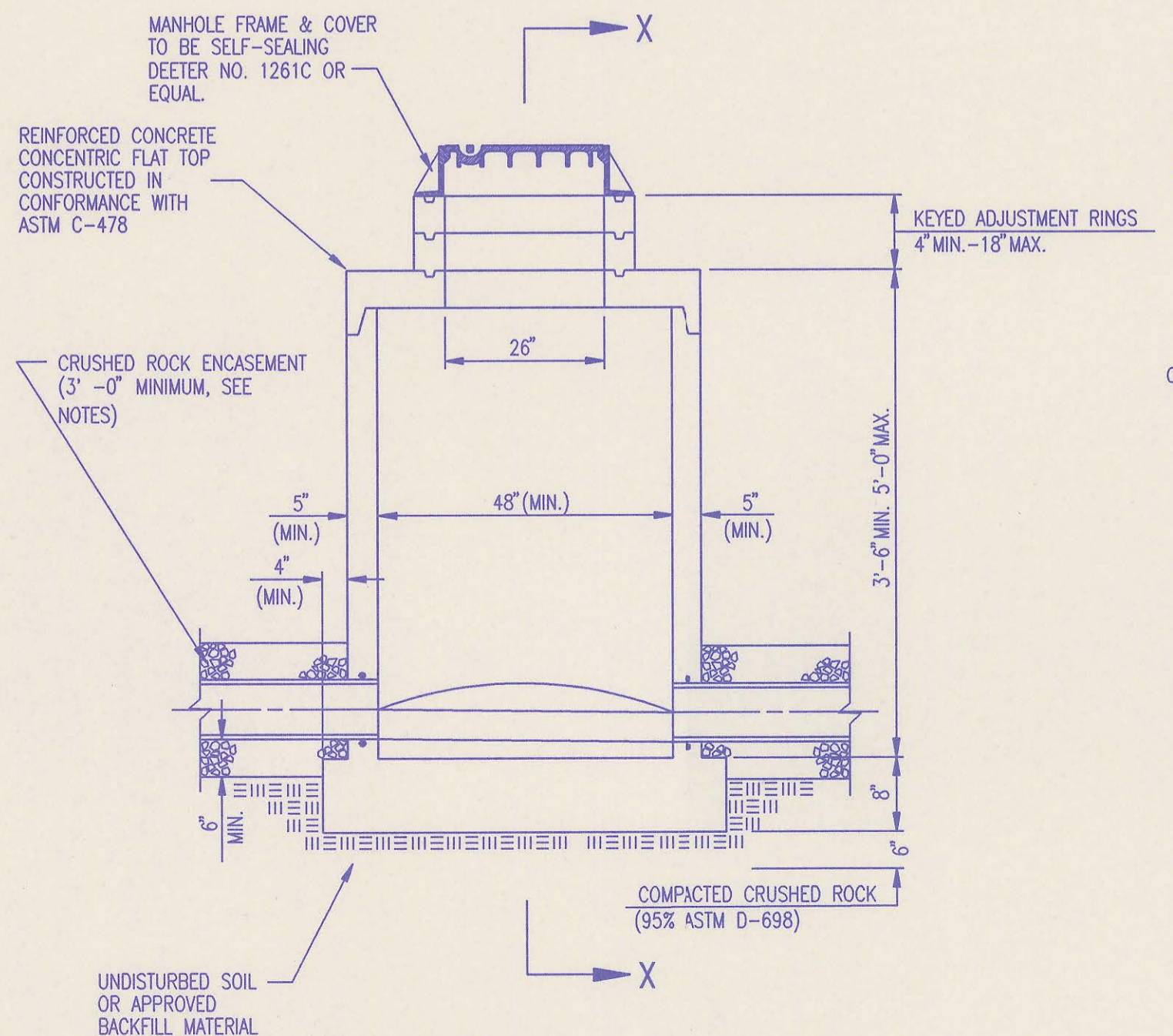
PRECAST STANDARD MANHOLE TYPE "A"



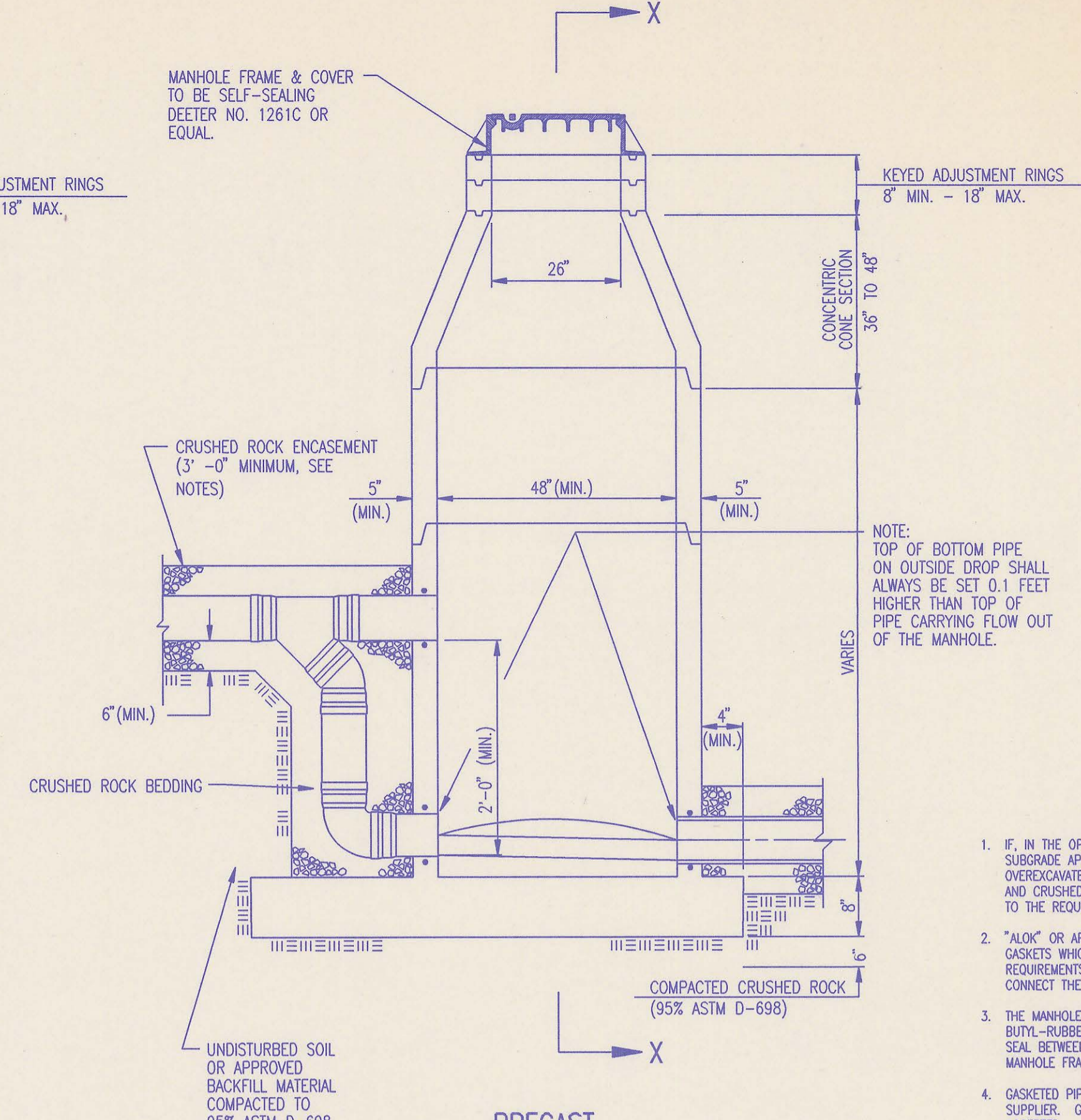
SECTION X (TYPICAL)



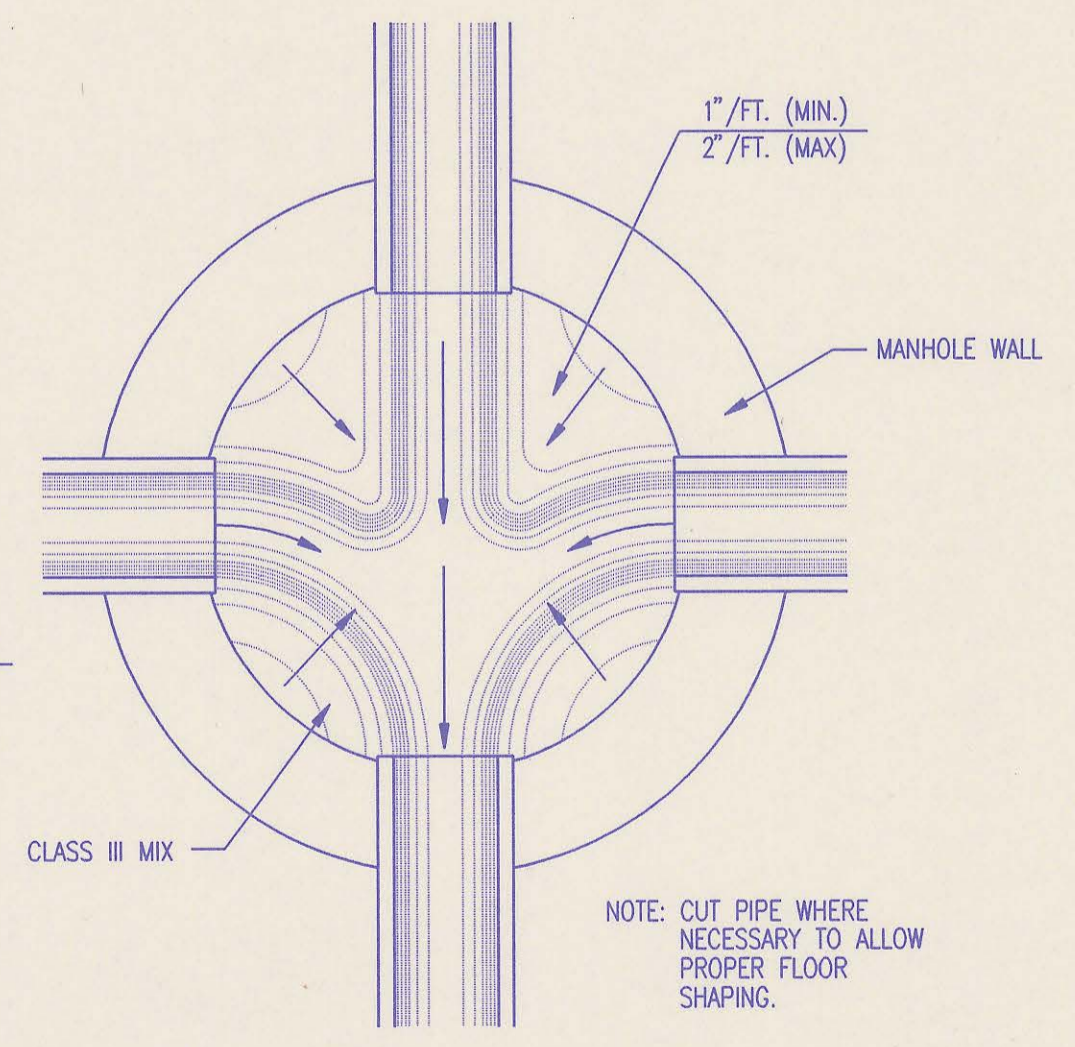
PRECAST INSIDE DROP MANHOLE TYPE "B"



PRECAST SHALLOW MANHOLE TYPE "D"



PRECAST OUTSIDE DROP MANHOLE TYPE "C"



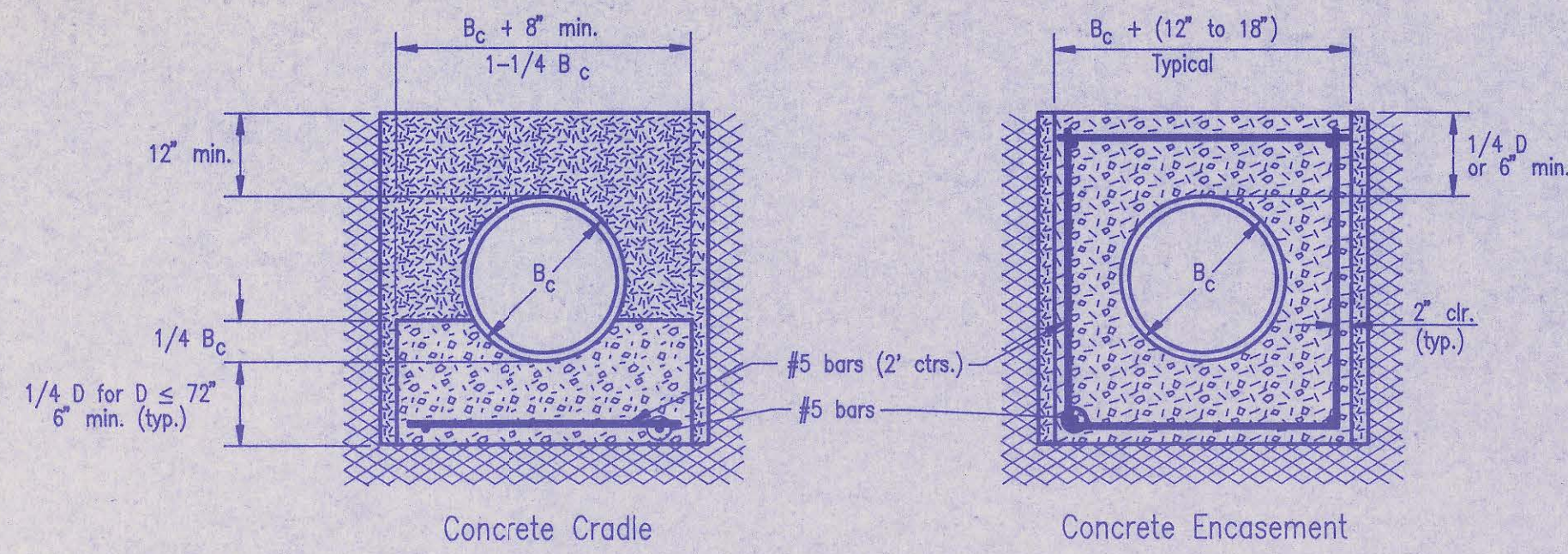
TYPICAL MANHOLE FLOOR SHAPING

- PRECAST MANHOLE NOTES**
1. IF, IN THE OPINION OF THE ENGINEER, THE MANHOLE SUBGRADE APPEARS UNSTABLE, THE CONTRACTOR WILL OVEREXCAVATE TO A SUITABLE SUBGRADE CONDITION AND CRUSHED ROCK SHALL BE PLACED AND COMPACTED TO THE REQUIRED GRADE.
 2. "A-LOK" OR APPROVED EQUAL FLEXIBLE WATER-STOP GASKETS WHICH MEET OR EXCEED THE TEST REQUIREMENTS OF ASTM C-923 SHALL BE INSTALLED TO CONNECT THE SEWER TO THE MANHOLE WALL.
 3. THE MANHOLE FRAME SHALL BE SEATED ON AN APPROVED BUTYL-RUBBER OR MASTIC SEALANT TO PROVIDE WATER-TIGHT SEAL BETWEEN THE MANHOLE ADJUSTMENT RING AND THE MANHOLE FRAME.
 4. GASKETED PIPE CAPS SHALL BE PROVIDED BY THE PIPE SUPPLIER. GLUED OR CEMENTED CAPS WILL NOT BE ACCEPTED.
 5. ALL MANHOLE CONSTRUCTION SHALL BE WATER TIGHT.
 6. TOP OF MANHOLE FLOOR SLAB SHALL BE AT LEAST 3 INCHES BELOW THE FLOW LINE OF THE OUTLET PIPE TO INSURE SUFFICIENT MINIMUM THICKNESS OF SHAPED INVERT.
 7. MANHOLES WITH PIPE SIZES 24" AND LARGER SHALL HAVE 5" INSIDE DIAMETER (MIN.).
 8. INSIDE DIAMETER OF FIVE-FOOT DIAMETER PRECAST MANHOLES SHALL REMAIN CONSTANT TO THE LOCATION OF THE REDUCING FLAT TOP WHICH CONNECTS THE FOUR-FOOT DIAMETER CONE SECTION TO THE FIVE-FOOT DIAMETER MANHOLE BARREL.
 9. MANHOLES SHALL BE SUPPLIED WITH PRECAST BASE SECTIONS UNLESS OTHERWISE APPROVED. ALL PRECAST CONCRETE MANHOLE SECTIONS AND BASES SHALL CONFORM TO THE LATEST REVISION OF ASTM C478 AS MODIFIED BY THE SPECIFICATIONS.
 10. WHERE MANHOLE STUBS ARE SHOWN ON THE PLANS, THE STUB SHALL EXTEND AT LEAST 5 FEET FROM THE INSIDE WALL OF THE MANHOLE. 4" STUBS SHALL BE SET AT 2.0% GRADE. 6" STUBS SHALL BE SET AT 1.0% GRADE.
 11. MANHOLE SECTIONS SHALL BE SUPPLIED WITH RECESSED LIFTING EYES. LIFTING EYE RECESSES SHALL BE GROUDED FLUSH TO THE MANHOLE WALL WITH HYDRAULIC CEMENT AFTER THE MANHOLE IS IN PLACE. LIFTING HOLES THRU THE MANHOLE WALL WILL NOT BE ACCEPTED.
 12. WHERE A-LOK GASKETS ARE REQUIRED, THE CONTRACTOR SHALL UTILIZE A CRUSHED ROCK BEDDING MATERIAL. THE ROCK BEDDING MATERIAL SHALL EXTEND TO 3 FEET FROM THE MANHOLE WALL AND SHALL BE COMPACTED IN PLACE FROM THE BOTTOM OF THE DISTURBED AREA TO 1 FOOT ABOVE THE TOP OF PIPE. THE CRUSHED ROCK WHICH IS PLACED BELOW THE PIPE BEDDING ZONE SHALL BE COMPACTED TO 95% ASTM D-698 (MIN.).
 13. WHERE MANHOLES ARE TO BE BUILT OVER EXISTING SANITARY SEWER LINES, SEWER PIPES SHALL BE SUPPORTED WITH CLASS I CONCRETE ENCASEMENT A MINIMUM OF 3 FEET OUTSIDE THE MANHOLE WALL.
 14. CRUSHED ROCK SHALL MEET THE REQUIREMENTS FOR GRANULAR BEDDING MATERIAL, AS OUTLINED IN THE SPECIFICATIONS.

2	Revised casting to Deeter Foundry Inc., No. 1261C	MK	12/20/95
1	Add mastic callout at joint	RJ	1/19/95
No.	Revision	By	Date

PRECAST MANHOLE DETAILS

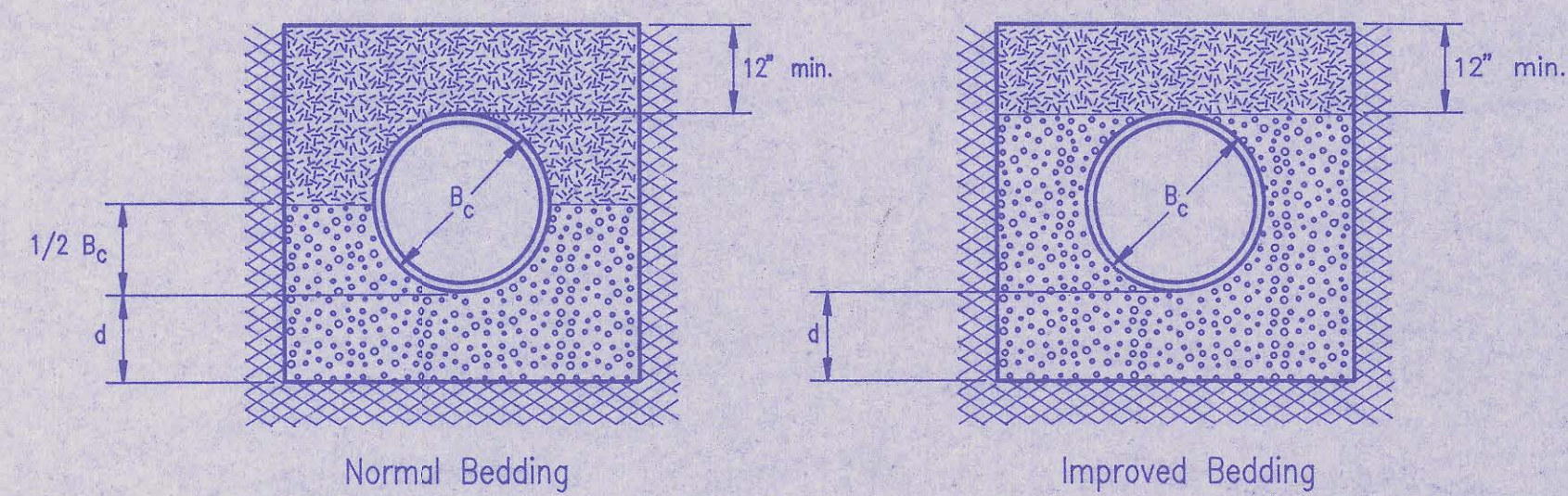
ADOPTED AS STANDARD DESIGN SEPTEMBER, 1989
BY
SEDGWICK COUNTY BUREAU OF PUBLIC SERVICES
DAVID C. SPEARS, P.E. DIRECTOR, BUREAU OF PUBLIC SERVICES/COUNTY ENGINEER



CLASS A

- B_c = Outside Pipe Diameter
- H = Backfill from Top of Pipe to Existing Ground
- D = Inside Pipe Diameter
- d = Depth of Bedding Material Below Pipe
- [Symbol] = Granular Bedding Material or Sand-Gravel Bedding
- [Symbol] = Compacted Embedment
- [Symbol] = Concrete

Depth of Bedding Material Below Pipe		
D	d(min) Soil	d(min) Rock
27" & smaller	4"	6"
30" to 60"	5"	9"
66" & larger	6"	12"



CLASS B

Granular Bedding Material shall be an approved material consisting of durable crushed rock conforming with the requirements of the latest revision of ASTM C-33 Size No. 67 (3/4" to No. 4); to be placed in not more than 6" layers and compacted by slicing with a shovel or vibrating. Soundness, abrasion, and absorption limits shall be as required for coarse aggregates in Section 03010—Concrete Work in the specifications.

Sand-Gravel Bedding Material — sand-gravel mix meeting Type UD-1 of the 1990 Kansas Standard Specifications for State Road and Bridge Construction.

Compacted Embedment shall be an approved sand material free from debris, organic material, and stones with 100% passing the 3/4" sieve to be placed in uniform layers not more than 6" thick and compacted to 95 percent maximum density as determined by ASTM D698. Granular Bedding Material may be substituted for all or part of Compacted Embedment Materials.

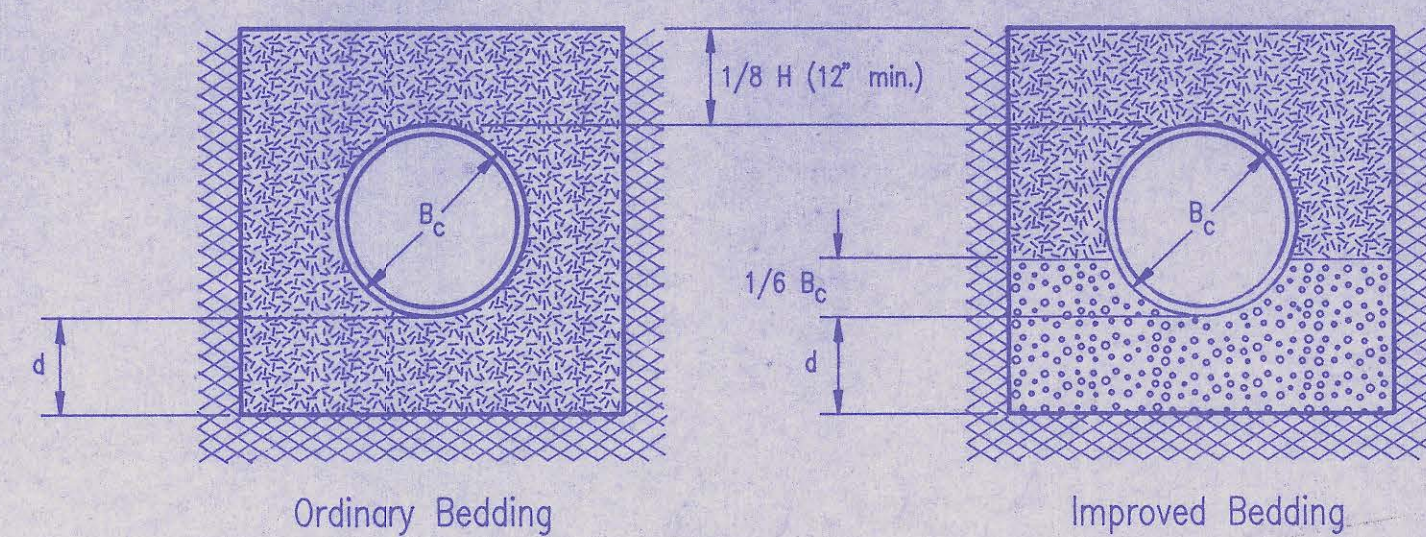
Class A "Concrete Cradle" and/or Class A "Concrete Encasement" is not required unless specified on the plans. However, where unexpected trench conditions exist or improper trenching is performed Class A Bedding may be required as determined by the Engineer.

Class B Bedding shall be used for all flexible pipe.

- a. Class B Normal Bedding shall be used for PVC Pipe unless wet conditions are encountered.
- b. Class B Improved Bedding shall be used for other flexible pipe, and for PVC pipe in wet conditions.

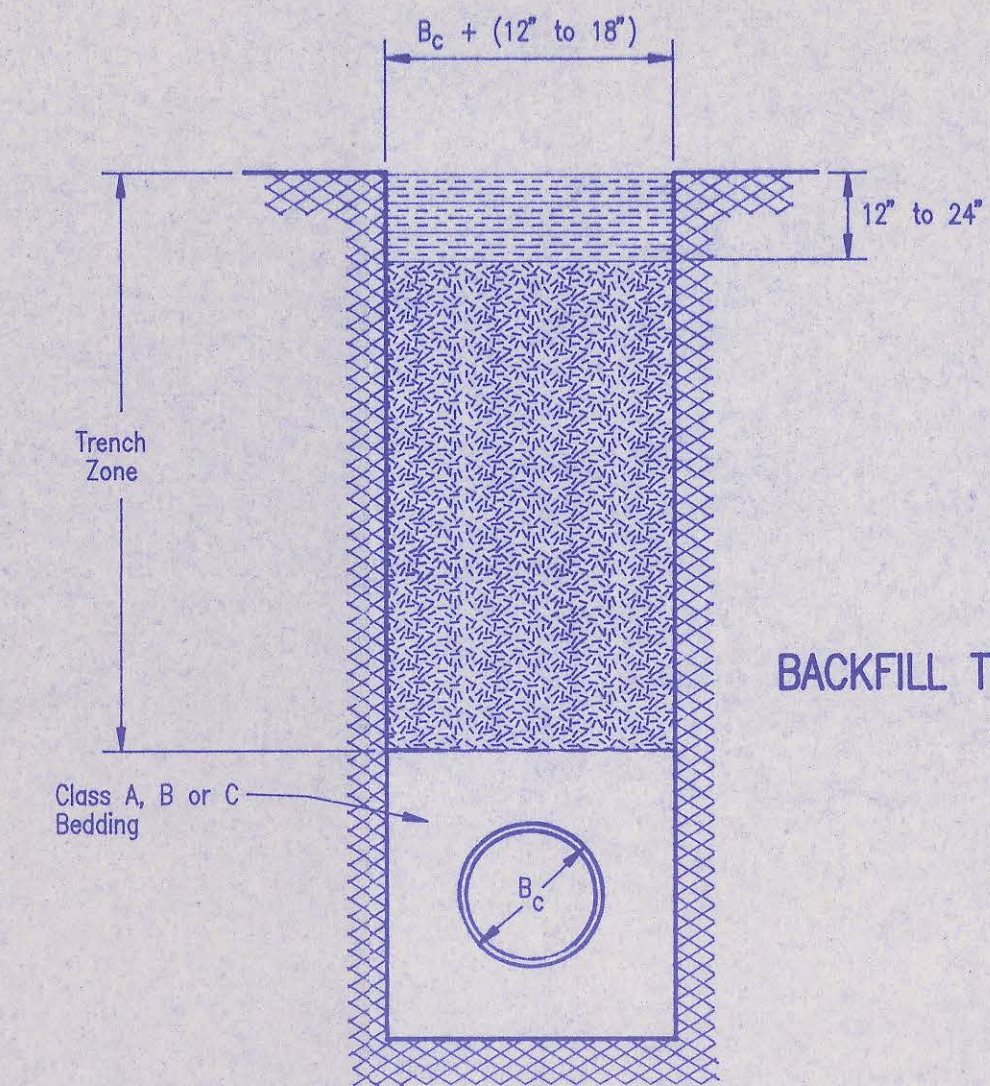
Class C Bedding shall be used for all rigid pipe.

- a. Class C Ordinary Bedding shall be used for all rigid pipe unless wet conditions are encountered.
- b. Class C Improved Bedding shall be used for wet conditions existing in the trench, as directed by the Engineer, at no additional cost to the Owner. The dimensions shall be equal to that required for "rock" excavation (see specifications).



CLASS C

PIPE ZONE BACKFILLING



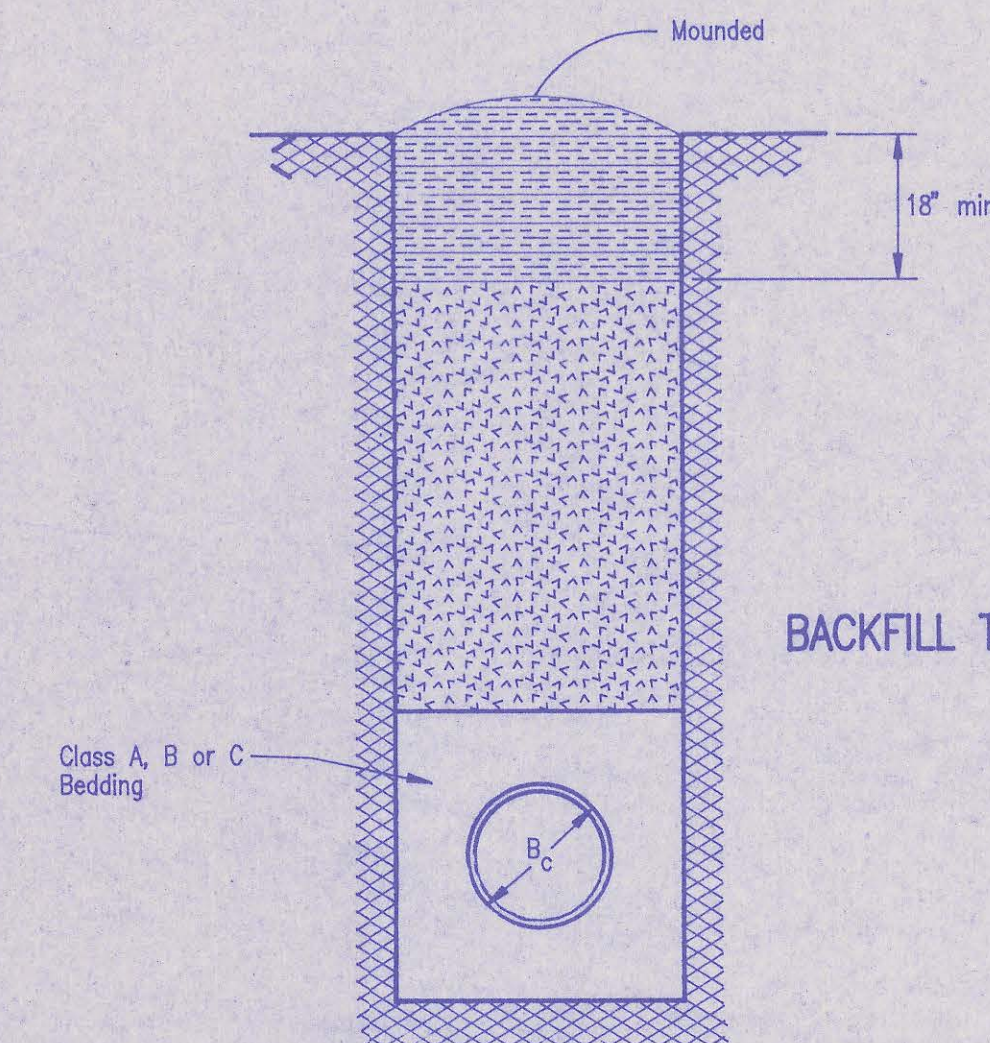
BACKFILL TYPE I

- B_c = Outside Pipe Diameter
- [Symbol] = Compacted Granular Backfill
- [Symbol] = Uncompacted Earth Backfill
- [Symbol] = Compacted Earth Backfill

Compacted Granular Backfill material shall be an approved sand material free from debris, organic material and stones with 100% passing the 3/4" sieve and not more than 15% passing a No. 200 sieve; to be jetted and mechanically vibrated into place and compacted to 95% density as determined by ASTM D698.

Uncompacted Earth Backfill material may be natural soil free from large clods or stones, brush, roots more than 2 inches in diameter, debris, and junk. Flooding with water shall be provided as directed by the Engineer.

Compacted Earth Backfill shall consist of material existing prior to trenching or selected material as directed by the Engineer, and shall be compacted to 90% density as determined by ASTM D698.



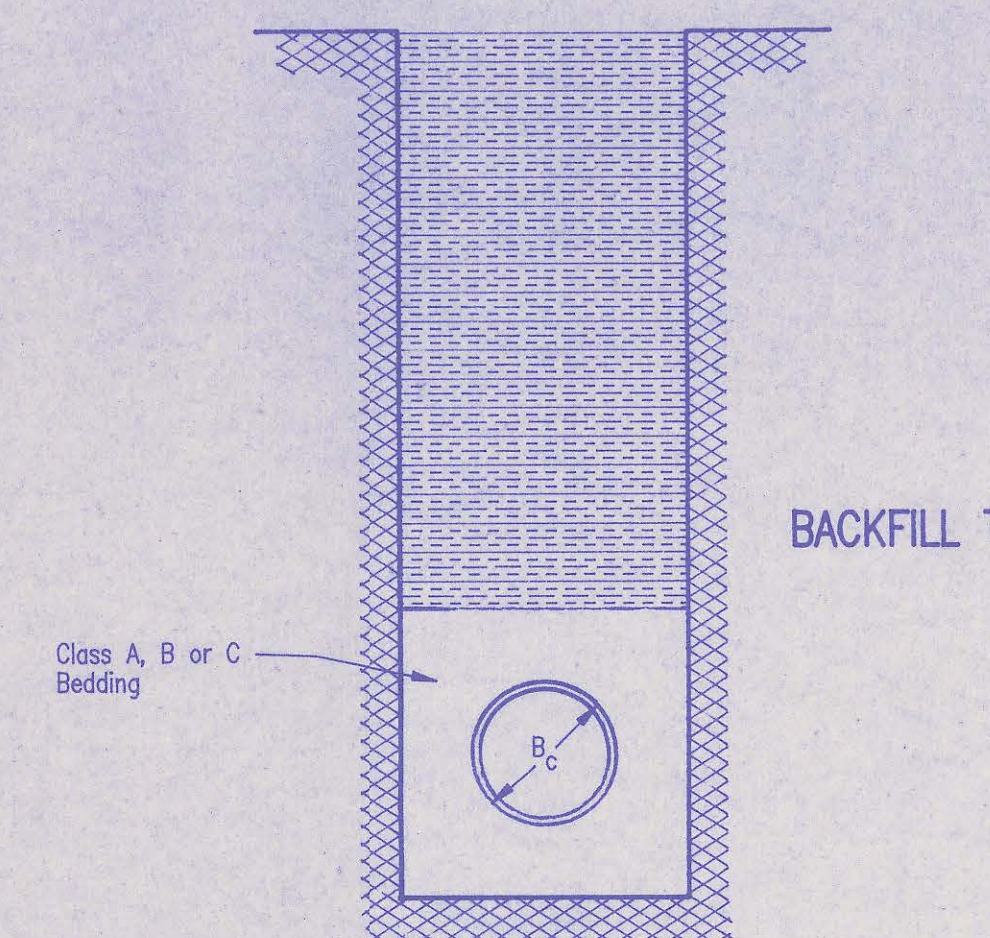
BACKFILL TYPE II

Backfill: Backfill material and compaction requirements shall conform to either Type I, Type II or Type III as specified in the plans. One years maintenance will be required on all backfill.

Backfilling Through Rock: Backfilling through rock shall be performed as specified in the paragraph Backfill above, except that the Pipe Zone is increased to provide eighteen (18) inches of cover over the pipe. When approved by the Engineer the remainder of the backfill may be excavated rock provided the excavated rock has been broken up so that earth and rock will thoroughly mix and not result in voids around the larger pieces of rock. Any excess rock remaining after the trench has been backfilled shall be removed or wasted as directed by the Engineer.

Backfilling Under Pavement: Backfilling under existing or proposed pavement shall be performed as Backfill Type I to a level of two (2) feet from the bottom of the pavement. The remainder of the trench shall be backfilled with selected material, sufficiently damp to be properly compacted in layers not exceeding six (6) inches in depth, compaction shall be performed with mechanical tampers and continued until a relative density of 100 percent of standard density, in conformance with ASTM D698 is attained.

Backfilling Under Gravel Streets: Where the trench crosses or is in existing gravel surfaced streets, the backfill shall be compacted as provided in the paragraph "Backfilling Under Pavement".



BACKFILL TYPE III

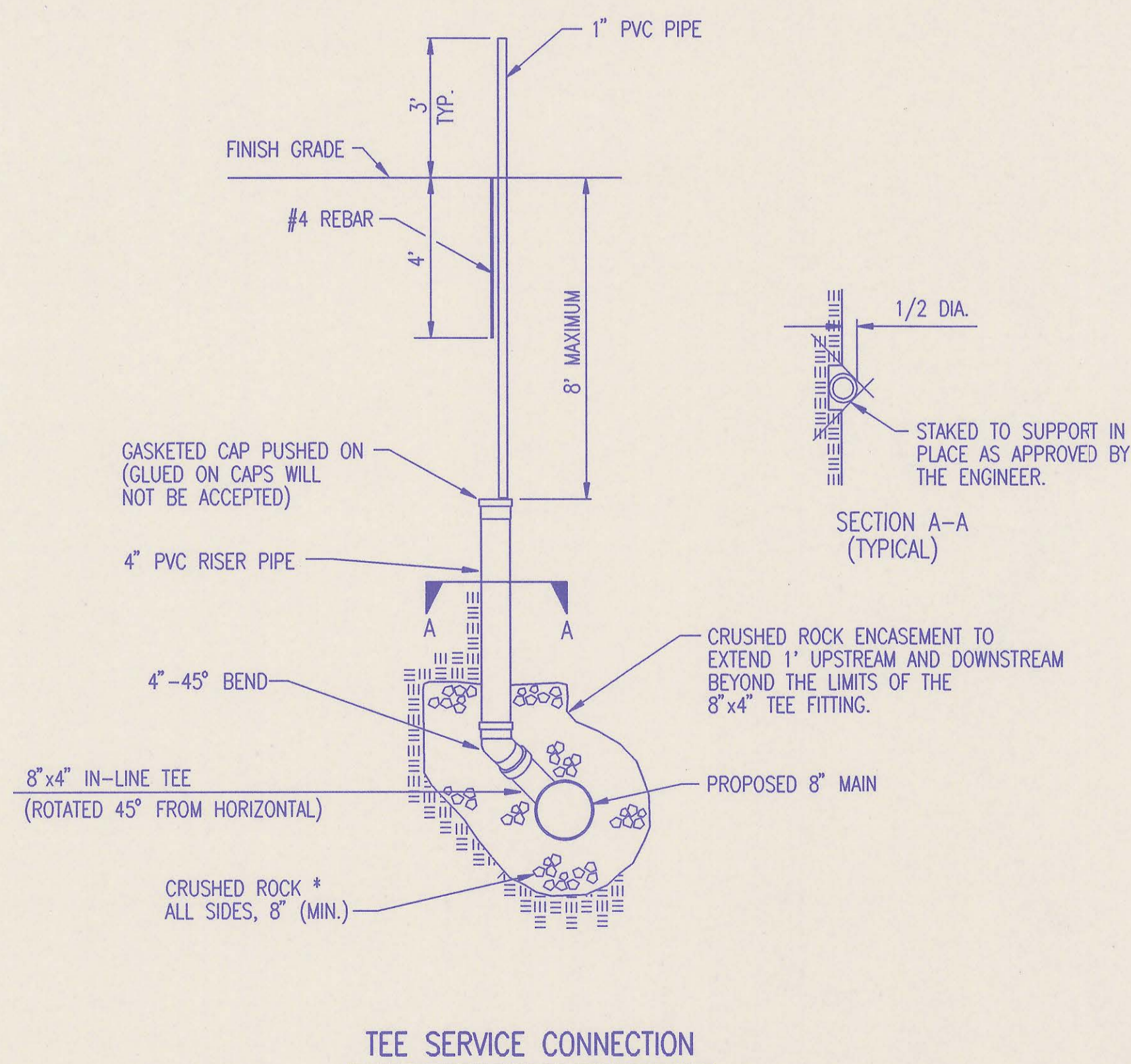
TRENCH ZONE BACKFILLING

2	Revised compaction designation—Backfilling under pavement	RJ	9/28/94
1	Revised compaction designation	RJ	3/9/94
No.	Revision	By	Date

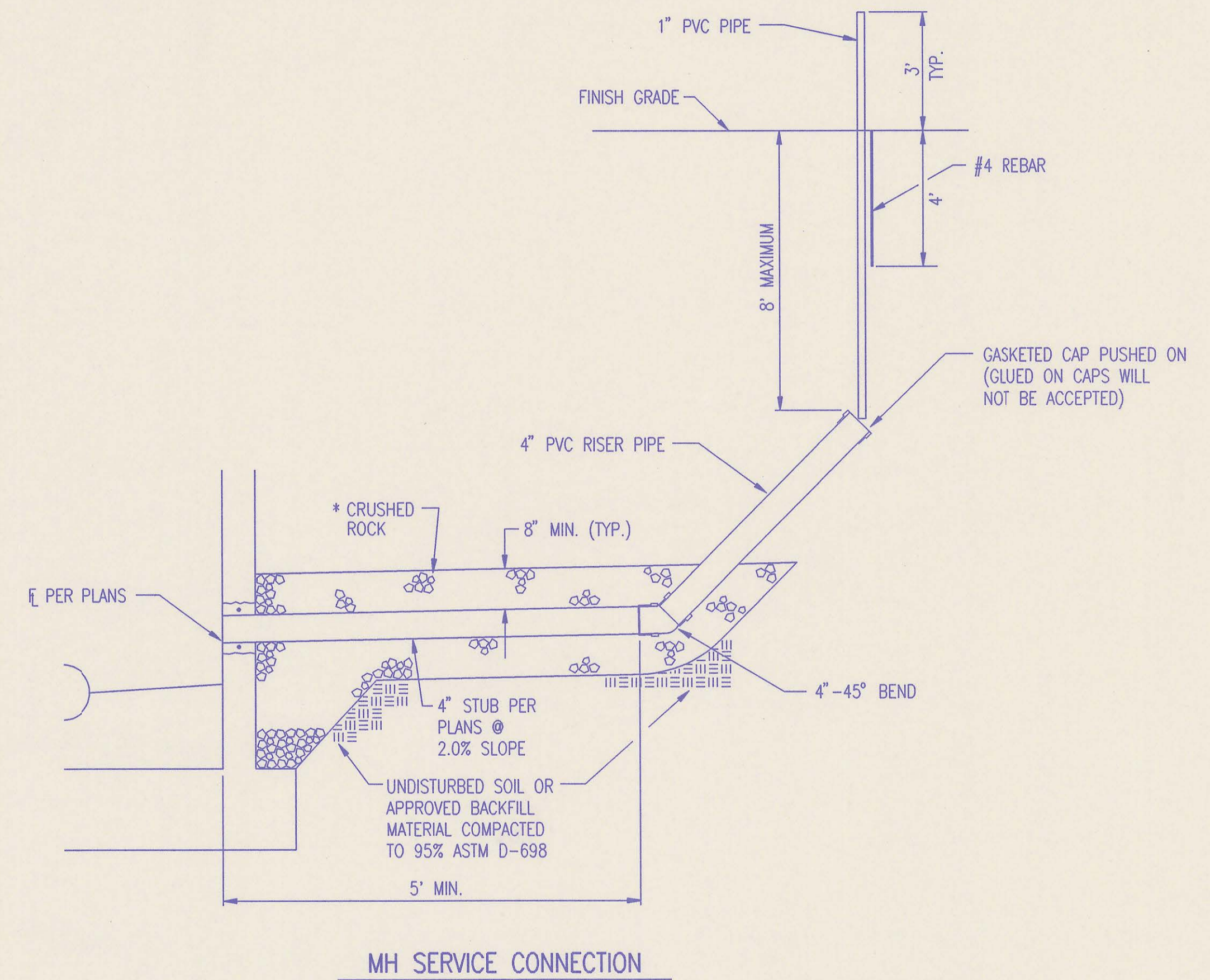
BACKFILL DETAILS
 ADOPTED AS STANDARD DESIGN SEPTEMBER, 1989
 BY
 SEDGWICK COUNTY BUREAU OF PUBLIC SERVICES
 DAVID C. SPEARS, P.E. DIRECTOR, BUREAU OF PUBLIC SERVICES/COUNTY ENGINEER

SEWER SERVICE TABLE*										
NO.	LOCATION				FOR INFORMATION ONLY (To be determined by measure.)		RECORD INFORMATION (TO BE COMPLETED BY PROJECT INSPECTOR)			NO.
	TYPE	LOT NO.	BLOCK NO.	LATERAL NO.	STATION/DIRECTION	APPROXIMATE DEPTH	DISTANCE FROM NEAREST MANHOLE UPSTREAM DOWNSTREAM			
1	TEE MANHOLE SERVICE CONNECTION	6	6	M1-#3A	21+76/RT(N)	22+12	15'	35' From MH M1-3A-2B		1
2	TEE MANHOLE SERVICE CONNECTION	5	6	M1-#3A	22+56/RT(N)	22+92	16.5'	115' From MH M1-3A-2B		2
3	TEE MANHOLE SERVICE CONNECTION	4	6	M1-#3A	23+38/RT(N)	23+78	16'		131' From MH M1-3A-2B	3
4	TEE MANHOLE SERVICE CONNECTION	3	6	M1-#3A	24+19/RT(N)	24+59	15.5'		50' From MH M1-3A-2B	4
5	TEE MANHOLE SERVICE CONNECTION	2	6	M1-#3A	24+99/RT(N)	25+39	14.5'	90' From MH M1-3A-2B		5
6	TEE MANHOLE SERVICE CONNECTION	1	6	M1-#3A	25+79/RT(N)	26+19	13'	110' From MH M1-3A-2B		6
7	TEE MANHOLE SERVICE CONNECTION	13	5	M1-#3A	32+76/RT(N)	31+27	14.5'		45' From MH 71-1-1	7
8	G ¹ MANHOLE SERVICE CONNECTION	14	5	71-1	36+72.77/RT(W)	36+03.51	9.5'	MH 71-1-3		8
9										9
10										10
11										11
12										12
13										13
14										14
15										15
16										16
17										17
18										18
19										19
20										20
21										21

*ALL PIPE AND FITTINGS LESS THAN 8" DIAMETER, SHALL BE SCH. 40 - SOLID WALL (ASTM D 2665)



TEE SERVICE CONNECTION



MH SERVICE CONNECTION

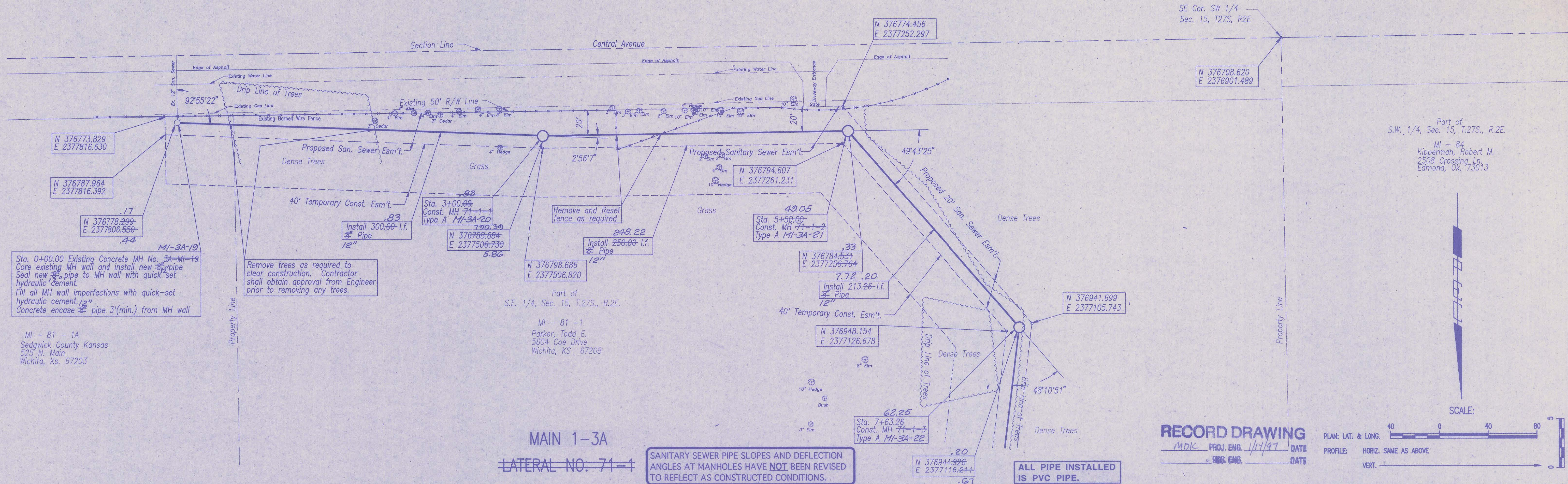
* CRUSHED ROCK SHALL MEET THE REQUIREMENTS FOR GRANULAR BEDDING MATERIAL, AS OUTLINED IN THE SPECIFICATIONS.

SERVICE CONNECTIONS ARE TO BE INSTALLED WHERE PROPOSED SEWER MAIN IS 12' OR MORE BELOW PROPOSED GROUND OR AS SHOWN IN THE PLANS.

RECORD DRAWING
 By MDK PHOJ. ENG. 1/14/97 DATE
 RES. ENG. _____ DATE

SERVICE CONNECTION DETAILS

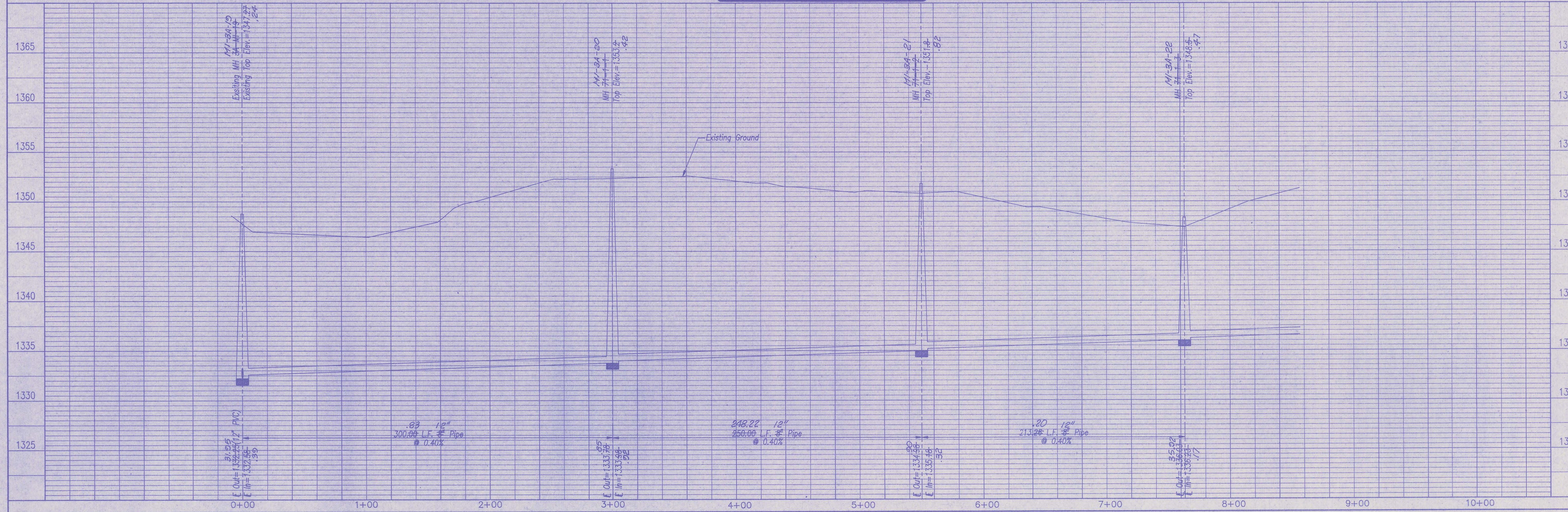
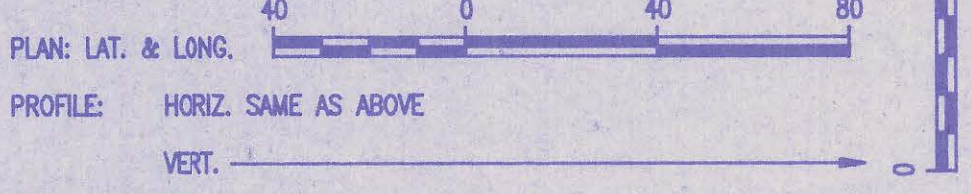
ADOPTED AS STANDARD DESIGN SEPTEMBER, 1989
 BY
 SEDGWICK COUNTY BUREAU OF PUBLIC SERVICES
 DAVID C. SPEARS, P.E. DIRECTOR, BUREAU OF PUBLIC SERVICES/COUNTY ENGINEER



MAIN 1-3A
LATERAL NO. 71-1

SANITARY SEWER PIPE SLOPES AND DEFLECTION ANGLES AT MANHOLES HAVE NOT BEEN REVISED TO REFLECT AS CONSTRUCTED CONDITIONS.

RECORD DRAWING
MDK PROJ. ENG. 1/11/97 DATE
RES. ENG. DATE



SEDIWICK COUNTY BUREAU OF PUBLIC SERVICES
DIRECTOR, BUREAU OF PUBLIC SERVICES/COUNTY ENGINEER

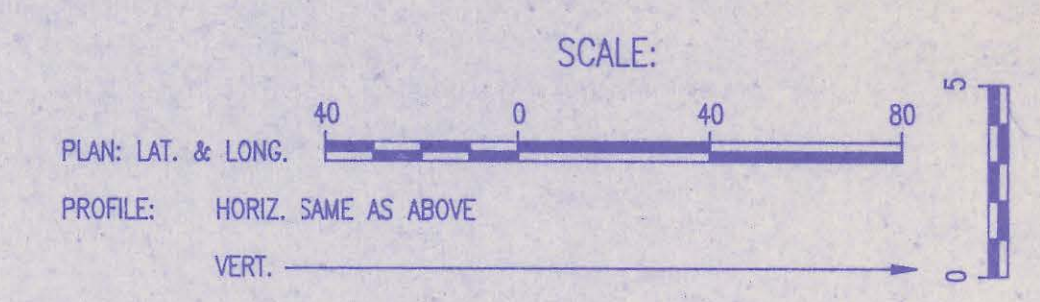
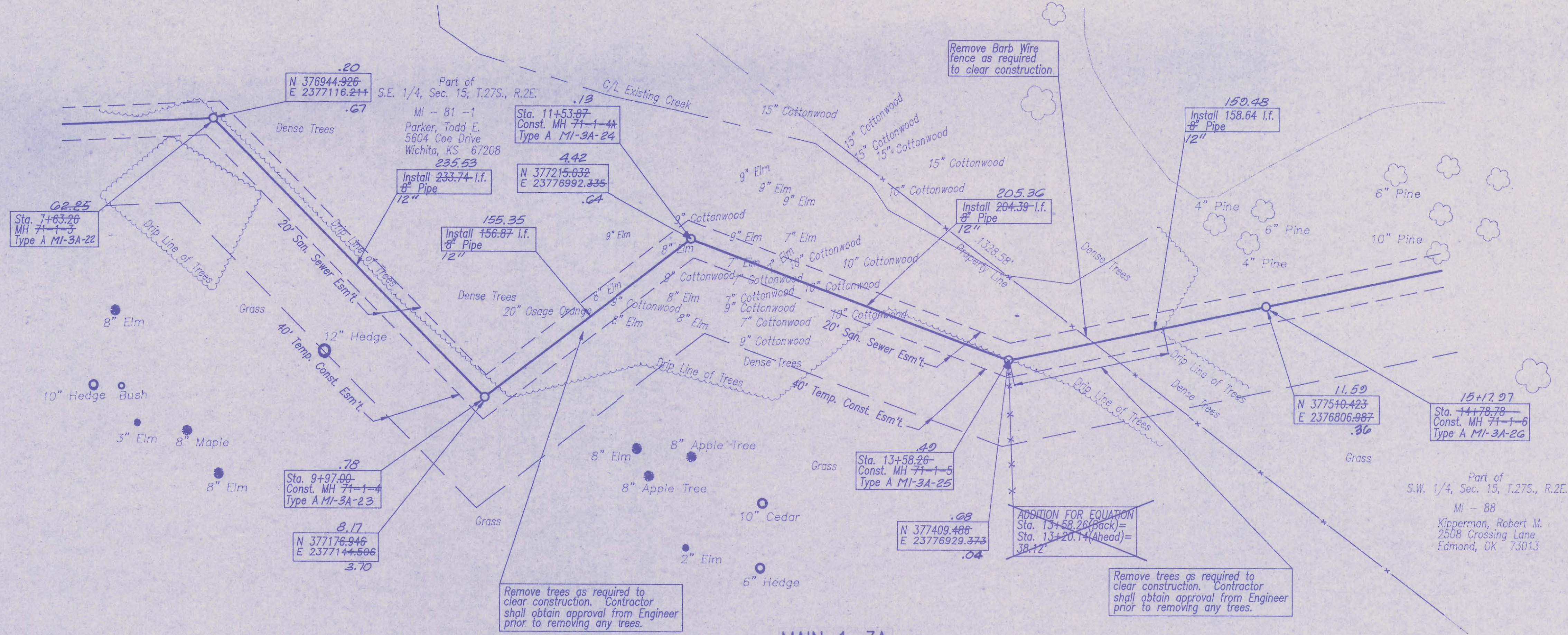
PROFESSIONAL ENGINEERING CONSULTANTS, P.A.
ENGINEERS
WICHITA, KANSAS

Job No. 34-95560
Date October 1995

Designed By DS, HOF w/OED
Drawn By

MAIN 1-3A LATERAL NO. 71-1
SANITARY SEWER IMPROVEMENTS
BALTHROP ADDITION

Sheet 8 of 12

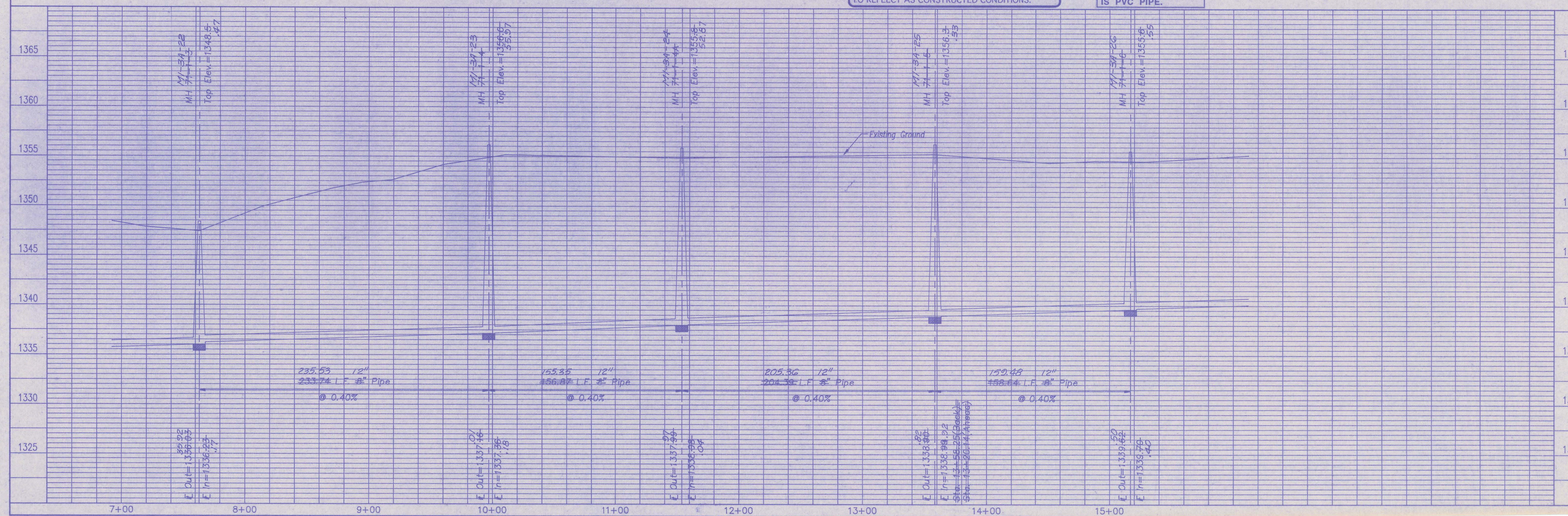


MAIN 1-3A
LATERAL NO. 71-1

SANITARY SEWER PIPE SLOPES AND DEFLECTION ANGLES AT MANHOLES HAVE NOT BEEN REVISED TO REFLECT AS CONSTRUCTED CONDITIONS.

ALL PIPE INSTALLED IS PVC PIPE.

RECORD DRAWING
MOK PROJ. ENG. 1/14/97 DATE
RES. ENG. DATE



SEDIWICK COUNTY BUREAU OF PUBLIC SERVICES
DIRECTOR, BUREAU OF PUBLIC SERVICES/COUNTY ENGINEER

PROFESSIONAL ENGINEERING CONSULTANTS, P.A.
WICHITA, KANSAS

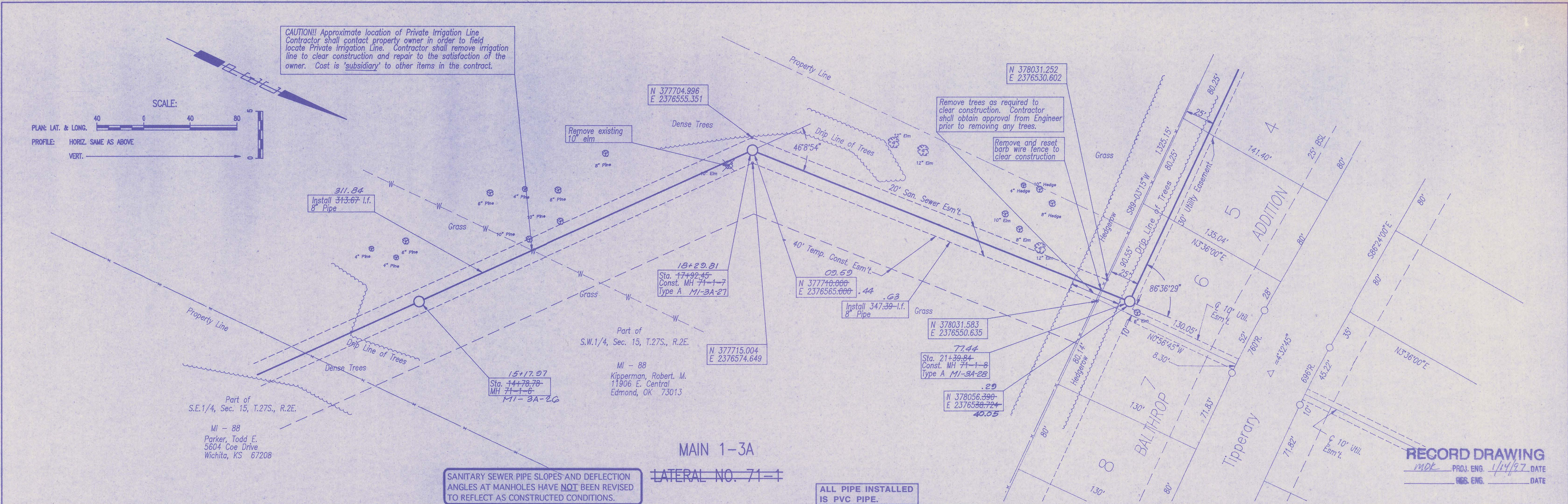
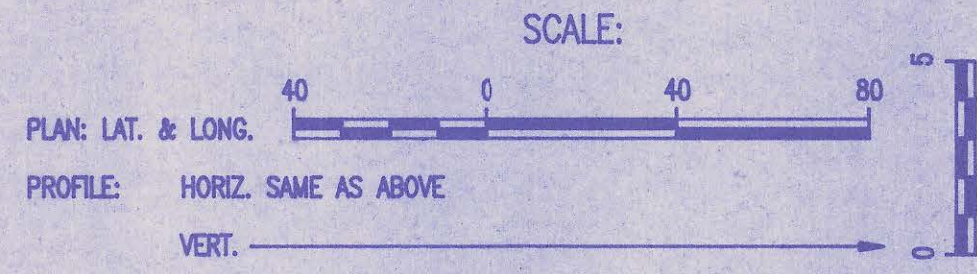
Job No. 34-95680
Date Oct. 1995, Rev. March 1998

Designed By DS, HFC w/CD
Drawn By DS, HFC w/CD

MAIN 1-3A LATERAL NO. 71-1

SANITARY SEWER IMPROVEMENTS
BALTHROP ADDITION

CAUTION!! Approximate location of Private Irrigation Line. Contractor shall contact property owner in order to field locate Private Irrigation Line. Contractor shall remove irrigation line to clear construction and repair to the satisfaction of the owner. Cost is 'subsidiary' to other items in the contract.

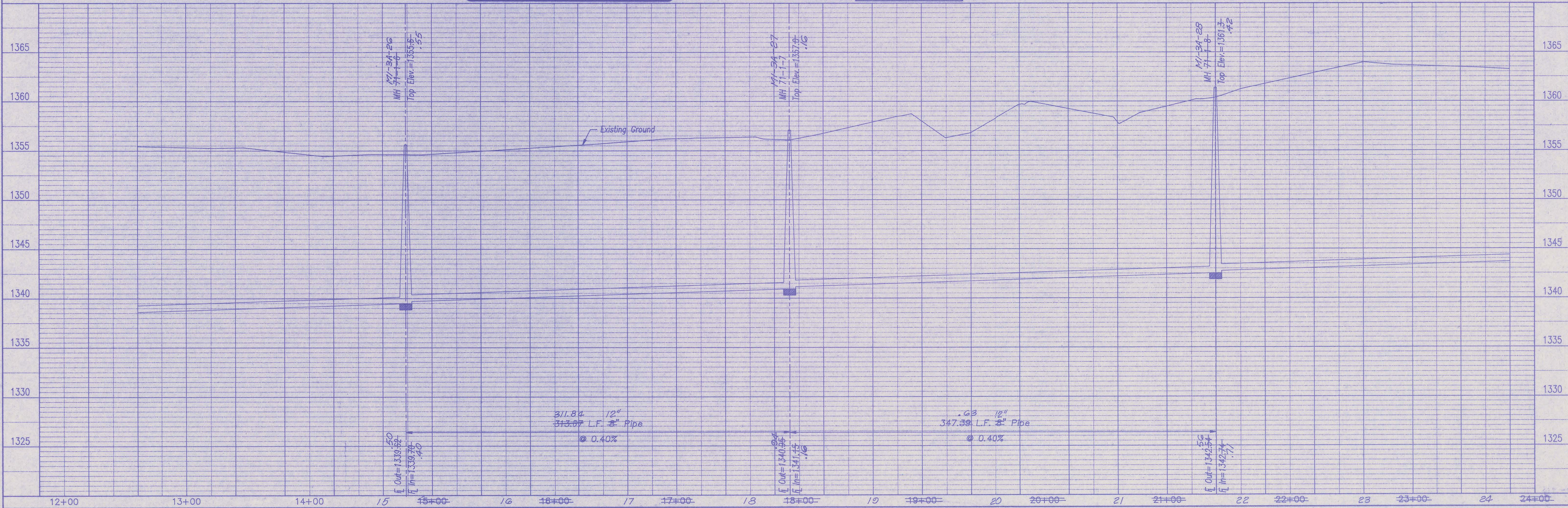


SANITARY SEWER PIPE SLOPES AND DEFLECTION ANGLES AT MANHOLES HAVE NOT BEEN REVISED TO REFLECT AS CONSTRUCTED CONDITIONS.

MAIN 1-3A
LATERAL NO. 71-1

ALL PIPE INSTALLED IS PVC PIPE.

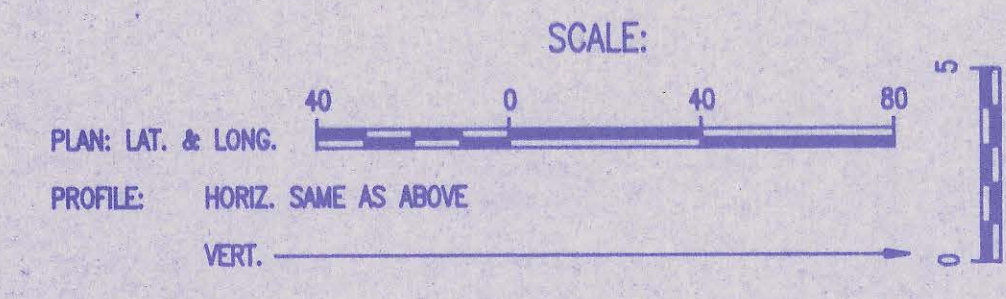
RECORD DRAWING
MDK PROJ. ENG. 1/14/97 DATE
GSS. ENG. DATE



SEDOWICK COUNTY BUREAU OF PUBLIC SERVICES
DIRECTOR, BUREAU OF PUBLIC SERVICES/COUNTY ENGINEER
DAVID C. SPANIS, P.E.
PROFESSIONAL ENGINEERING CONSULTANTS, P.A.
WICHITA, KANSAS
Job No. 34-95660
Date October 1995
Designed By HOF w/CEB
Drawn By DS, HOF w/CEB
Sheet 10 of 12
MAIN 1-3A LATERAL NO. 71-1
SANITARY SEWER IMPROVEMENTS
BALTHROP ADDITION

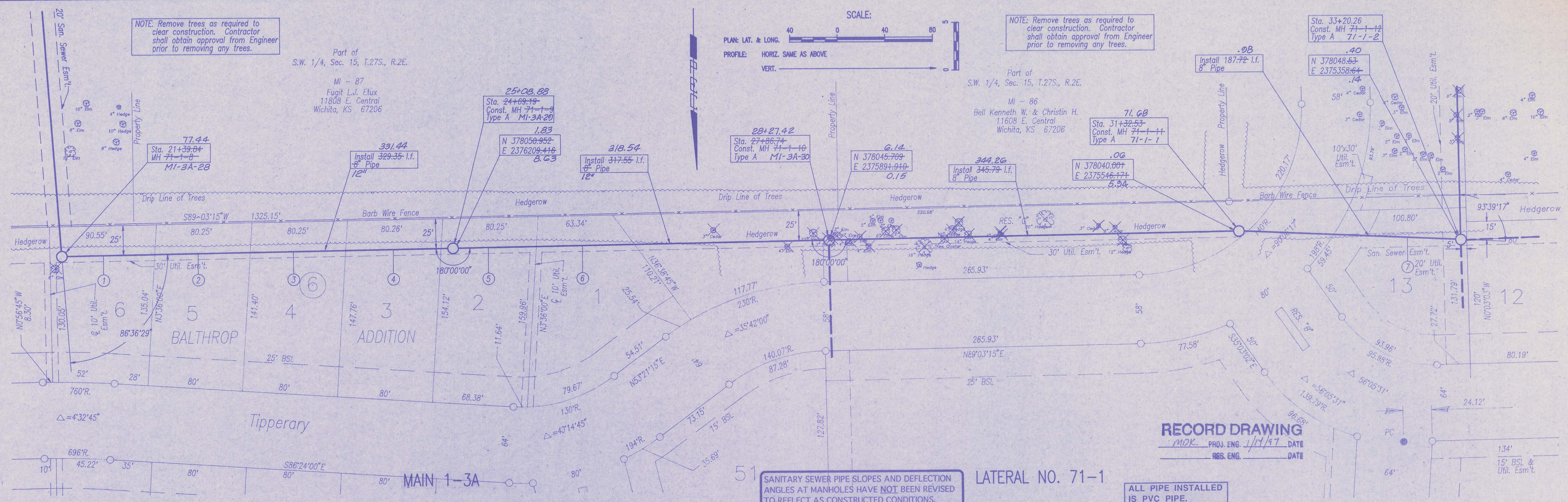
NOTE: Remove trees as required to clear construction. Contractor shall obtain approval from Engineer prior to removing any trees.

Part of S.W. 1/4, Sec. 15, T.27S., R.2E.
MI - 87
Fugit L.J. Etux
11808 E. Central
Wichita, KS 67206



NOTE: Remove trees as required to clear construction. Contractor shall obtain approval from Engineer prior to removing any trees.

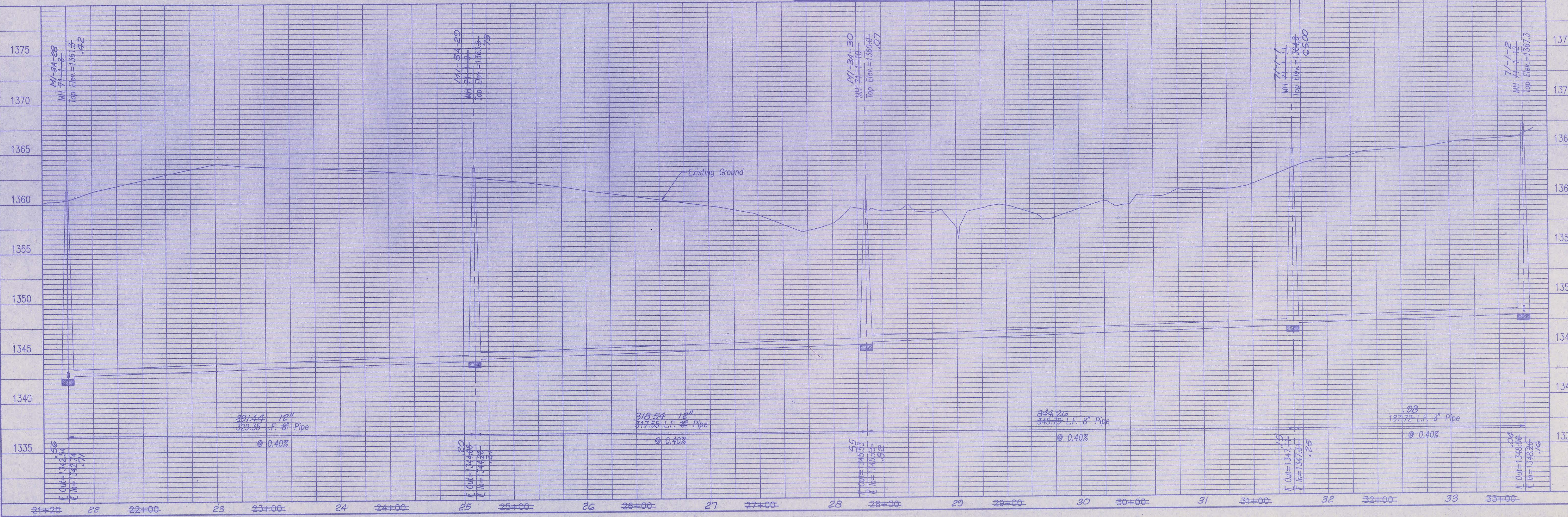
Part of S.W. 1/4, Sec. 15, T.27S., R.2E.
MI - 86
Bell Kenneth W. & Christin H.
11608 E. Central
Wichita, KS 67206



RECORD DRAWING
MDK PROJ. ENG. 1/11/97 DATE
RES. ENG. DATE

SANITARY SEWER PIPE SLOPES AND DEFLECTION ANGLES AT MANHOLES HAVE NOT BEEN REVISED TO REFLECT AS CONSTRUCTED CONDITIONS.

ALL PIPE INSTALLED IS PVC PIPE.



SEDGWICK COUNTY BUREAU OF PUBLIC SERVICES
DIRECTOR, BUREAU OF PUBLIC SERVICES/COUNTY ENGINEER

MAIN 1-3A & LATERAL NO. 71-1
SANITARY SEWER IMPROVEMENTS
BALTHROP ADDITION

PROFESSIONAL ENGINEERING CONSULTANTS, P.A.
OWNERS: WICHITA, KANSAS

Designed By: HOF w/CD
Drawn By: DS, HOF w/CD

Job No. 34-95580
Date October 1995

Sheet 11 of 12

