

4MC-062

SEWAGE DISPOSAL AND SANITARY SEWERS
SHADYBROOK FARM ADDITION
SEDGWICK COUNTY, KANSAS

LINE 2 FROM STATION 13+95 TO 24+35
LATERAL 3A
LATERAL 3B

OWNER:
SEDGWICK COUNTY

APPROVED DATE 11/2/76
John Hale
JOHN HALE
CHAIRMAN
BOARD OF COUNTY COMMISSIONERS

ENGINEER:

K. O. TAYLOR, P.E.
SEPTEMBER 21, 1972
REVISED OCT. 5, 1976

FILED IN THE OFFICE OF THE
SEDGWICK COUNTY CLERK
THIS 10 DAY OF October,
1976
George Purcell COUNTY CLERK



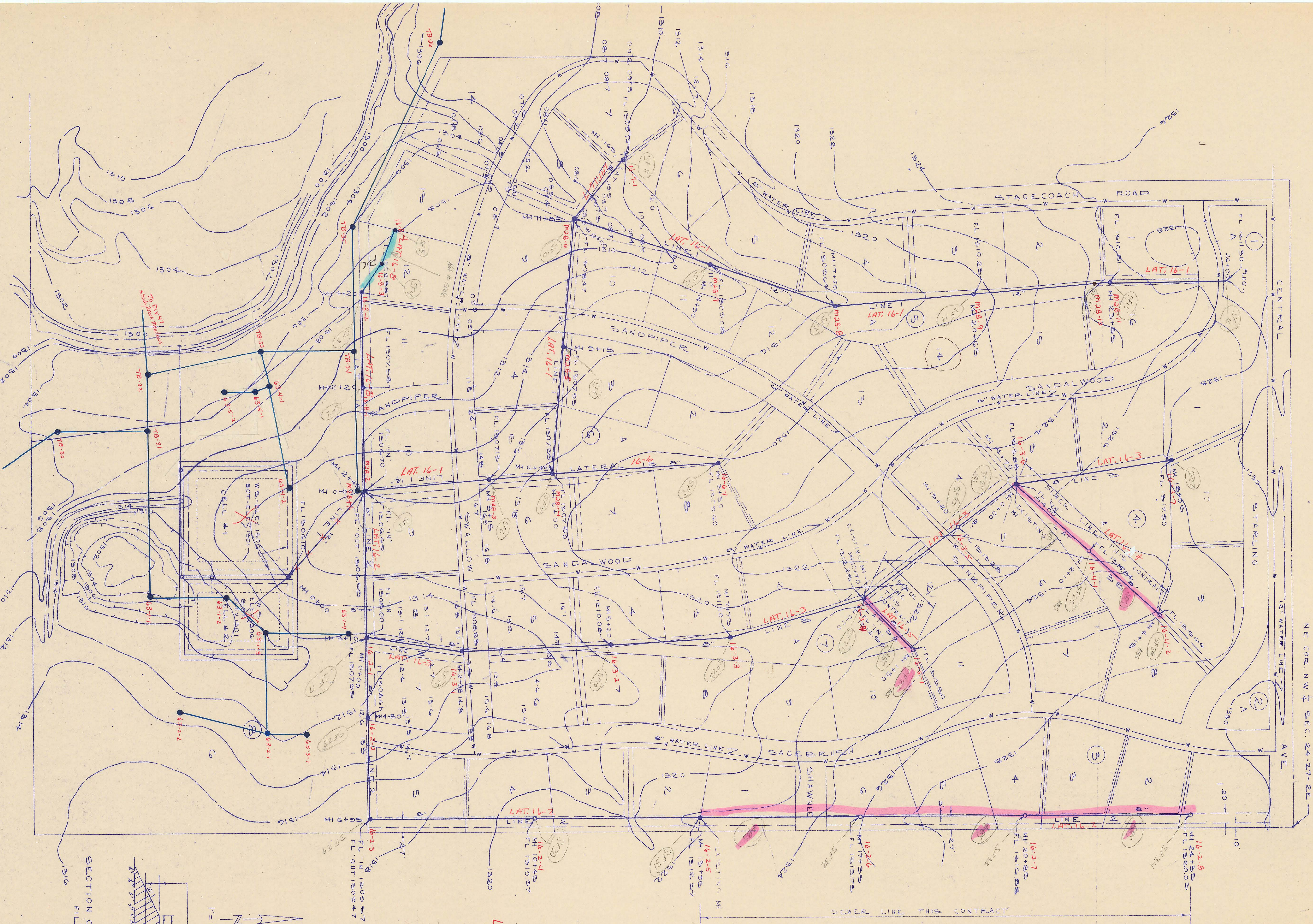
- INDEX OF DRAWINGS
- 1. SEWER & WATER PLAN (SHEET 1 OF 8)
 - 2. SEWER PROFILES (SHEET 2 OF 8)
 - 3. PLAT - SHADYBROOK FARM ADD. (SHEET 7 OF 8)
 - 4. MANHOLE DETAILS



4MC-062

APPROVED
K. O. Taylor
CITY ENGINEER
DATE 10/21/1976
CITY OF WICHITA PROJ. NO.

APPROVED
George Purcell
COUNTY ENGINEER
DATE 10-25-1976
SEDGWICK COUNTY PROJ. NO.



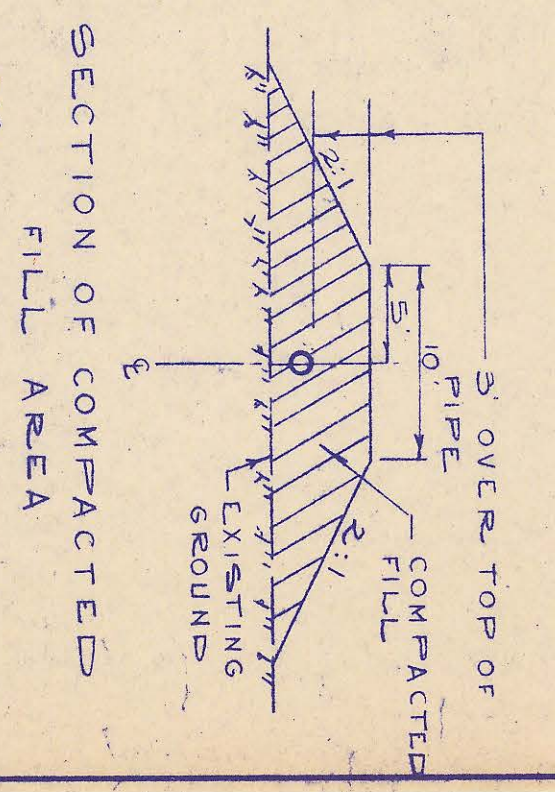
NE. COR. NW 1/4 SEC. 24-27-2E

B.M. ELEV. 1320.26 - GOD NAIL IN EAST SIDE 14" HEDGE TREE
 60' SOUTH NE. COR. N.W. 1/4 SEC. 24-27-2E.

B.M. ELEV. 1333.34 - TOP OF IRON @ THE SW COR. LOT 5, BKS,
 SHADYBROOK FARM ADDITION.

SHADYBROOK FARM ADDITION
 SANITARY SEWERS

- LAT. 16-1
 - " 16-2
 - " 16-3
 - " 16-4
 - " 16-5
 - " 16-6
 - " 16-7
 - " 16-8
- LAT 16-1 IS NEW MZB

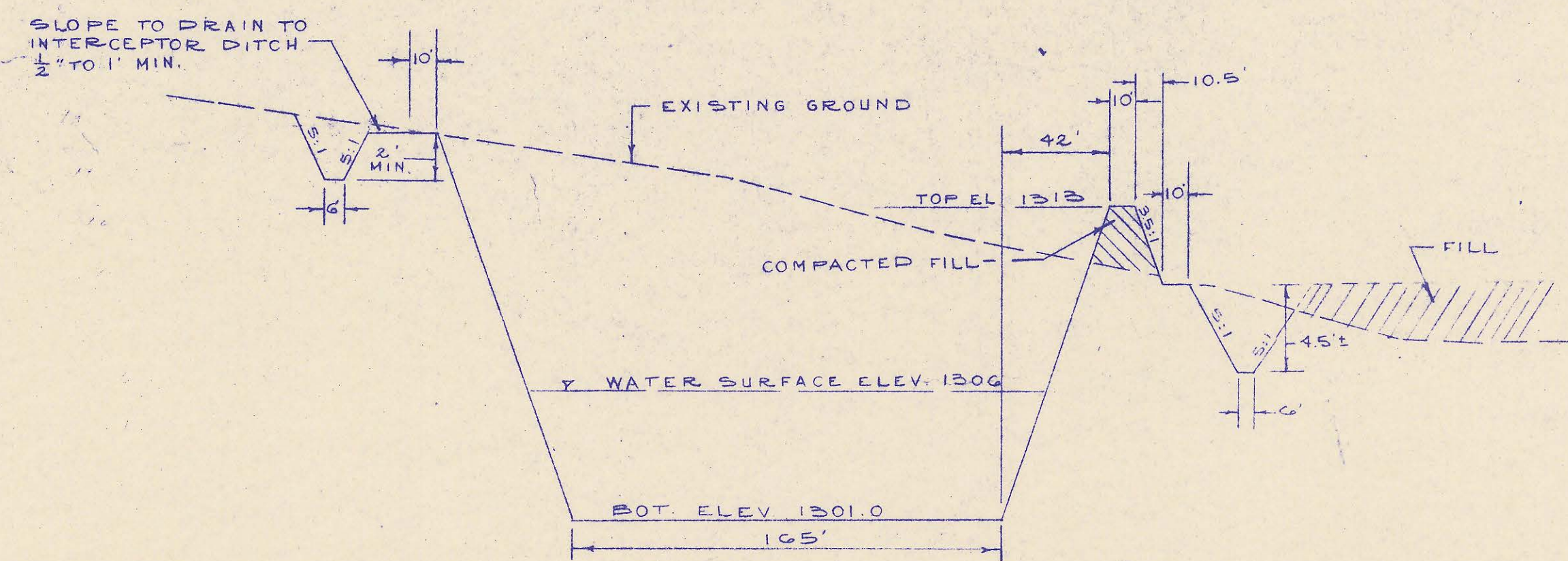


1" = 100'

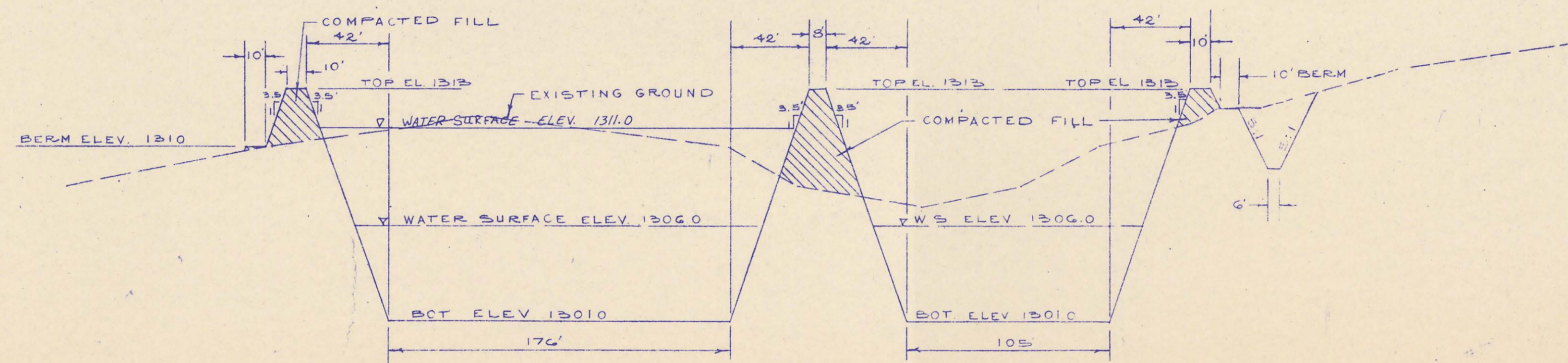
USE MANHOLE TYPE 'A' OR TYPE 'C'
 FOR THIS PROJECT

NOTE:
 MINIMUM COMPACTED FILL
 REQUIREMENTS ARE
 8 FT. ABOVE TOP OF PIPE WITH A
 10 FT. TOP AND 2:1 SLOPES.
 ALL COMPACTED FILL IN LOW
 AREAS SHALL BE MADE
 PRIOR TO INSTALLATION
 OF SEWER.

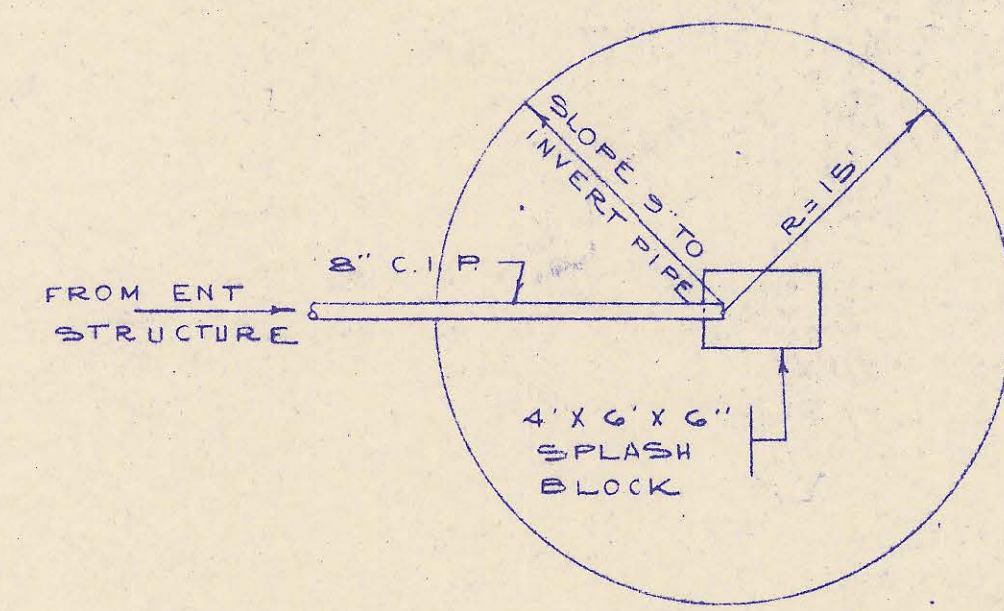
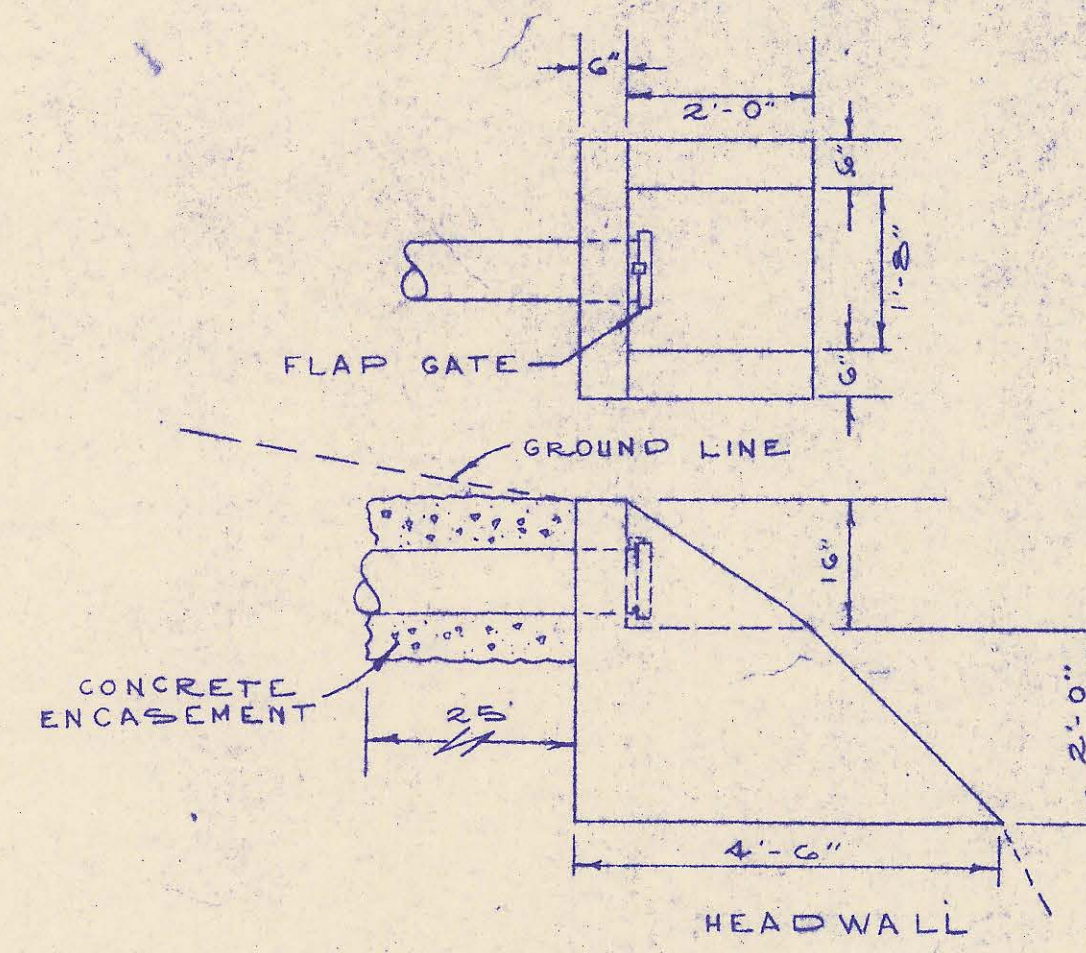
K.O. TAYLOR, P.E.
 SEPT. 21, 1972
 REVISED OCT. 5, 1976



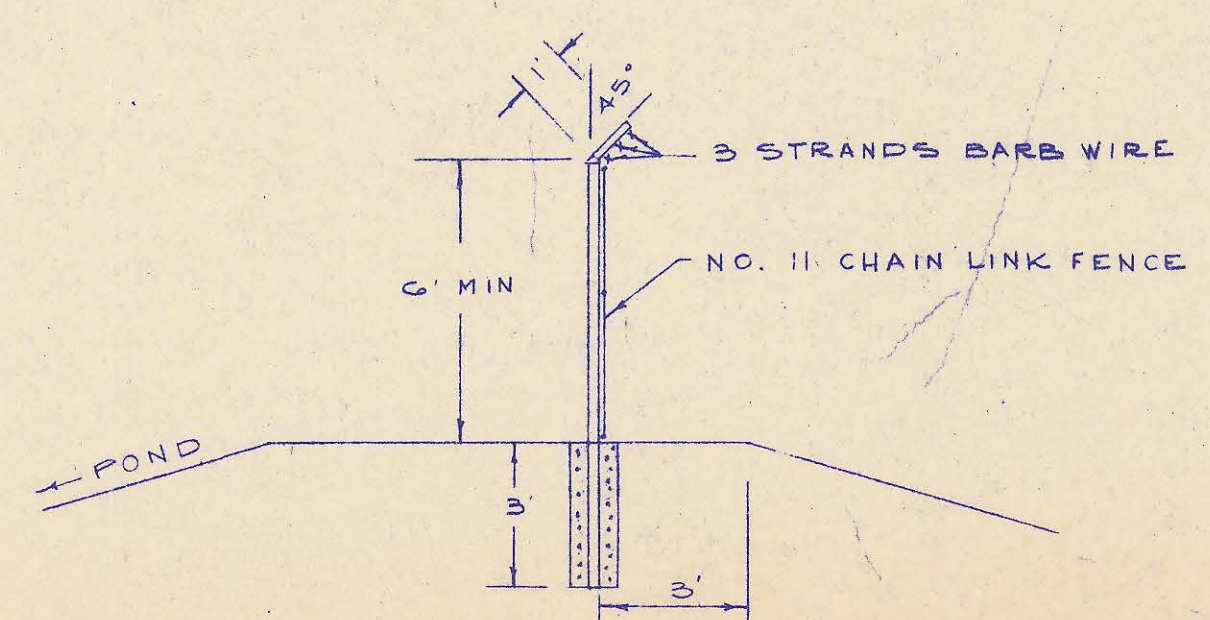
SECTION B-B
HORIZ. - 1"=50'
VERT. - 1"=5'



SECTION A-A
HORIZ. - 1"=50'
VERT. - 1"=5'



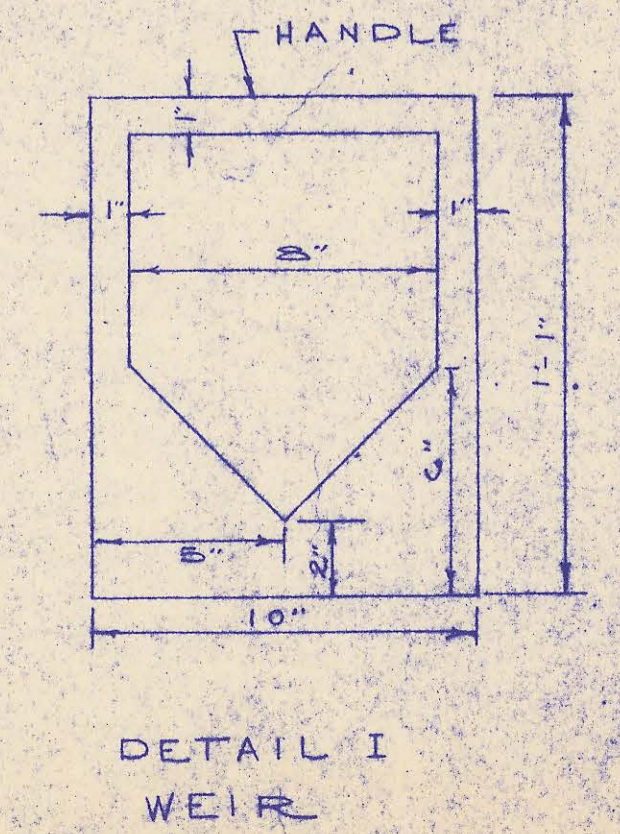
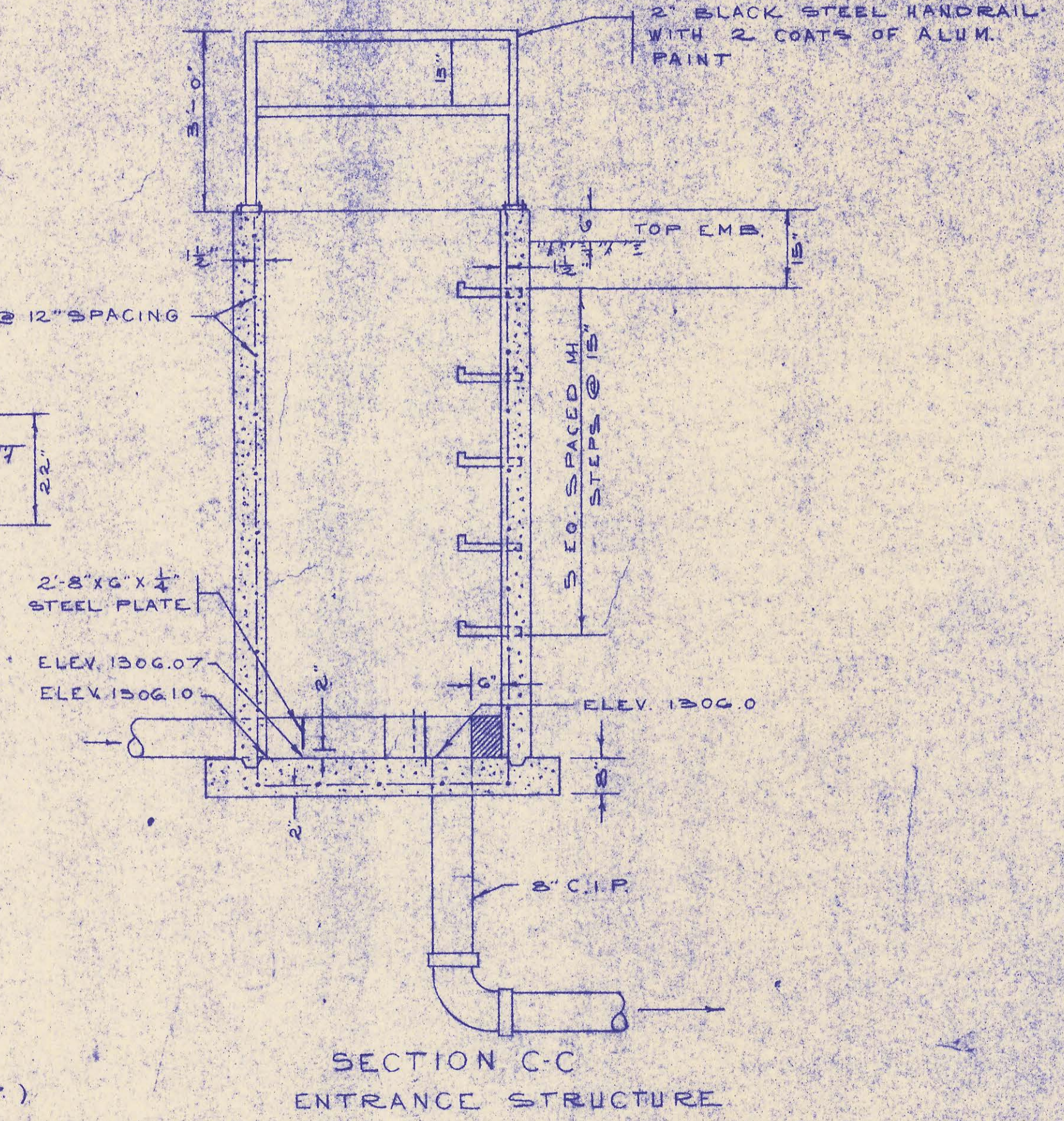
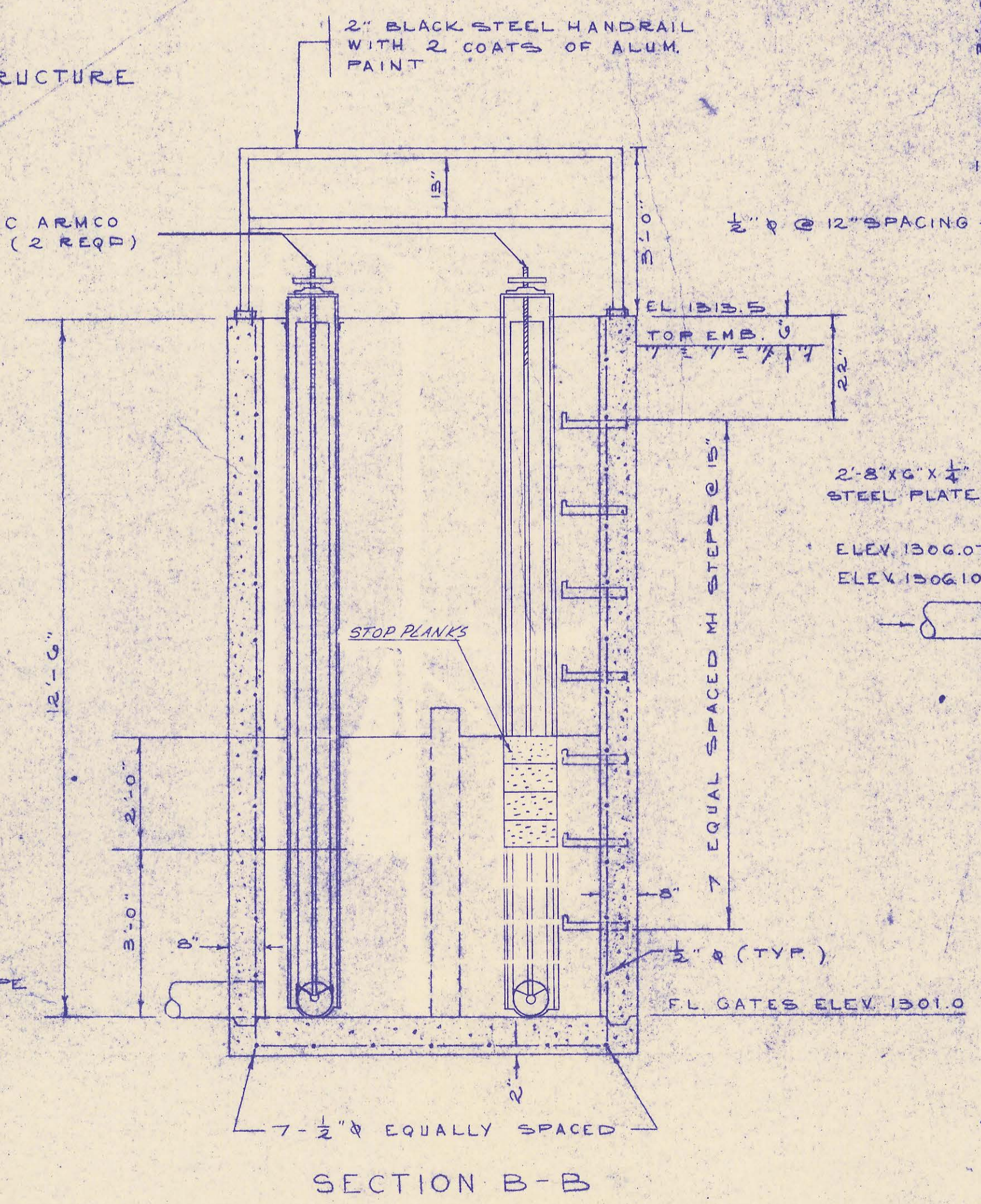
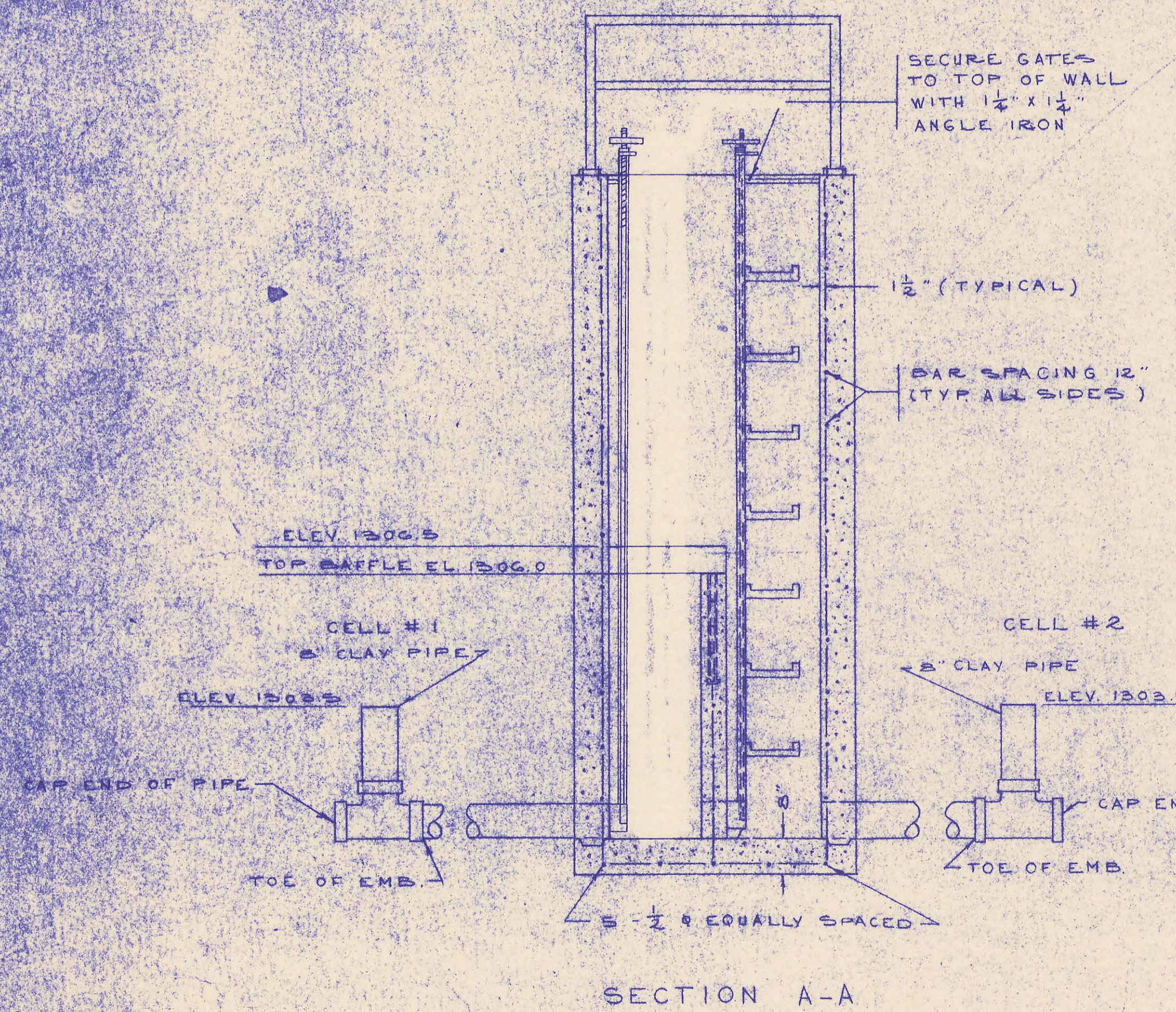
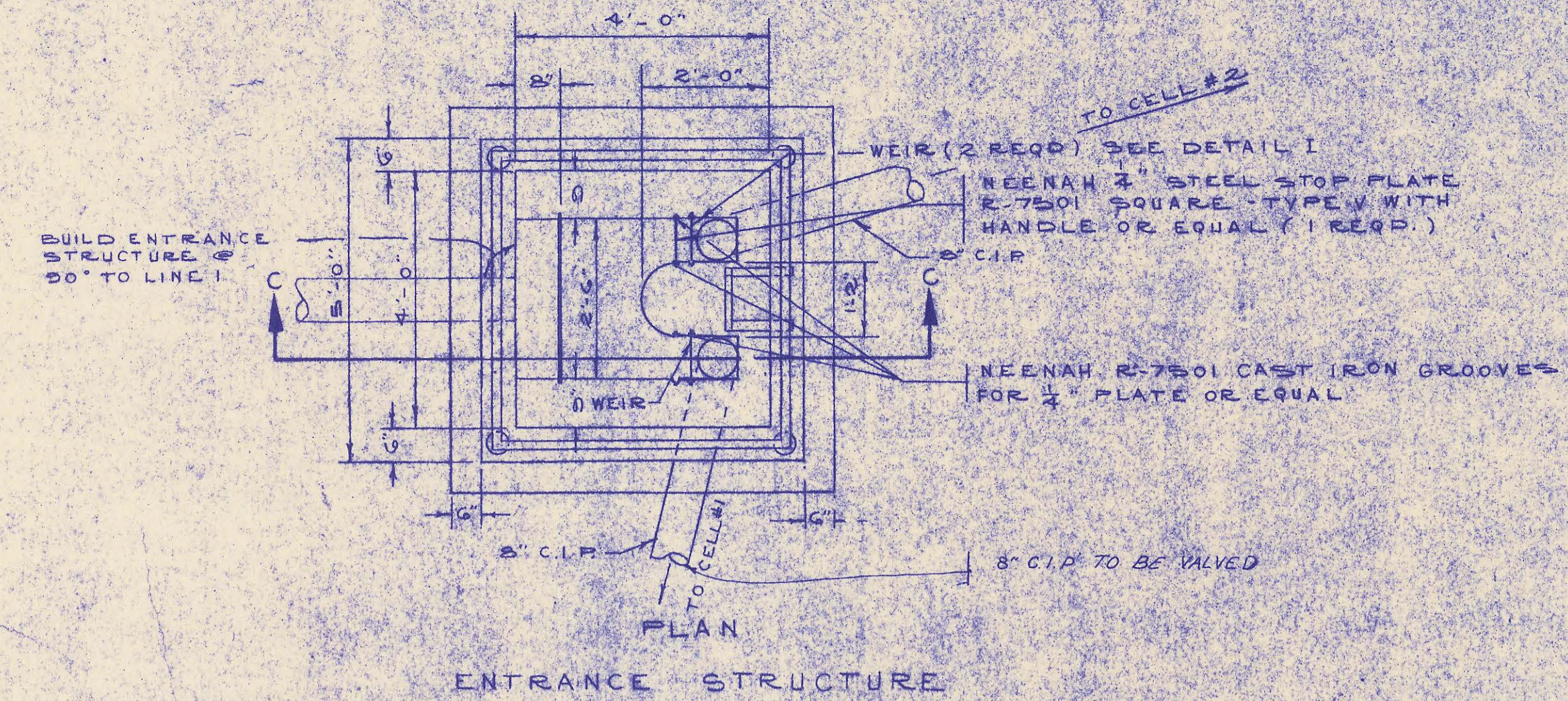
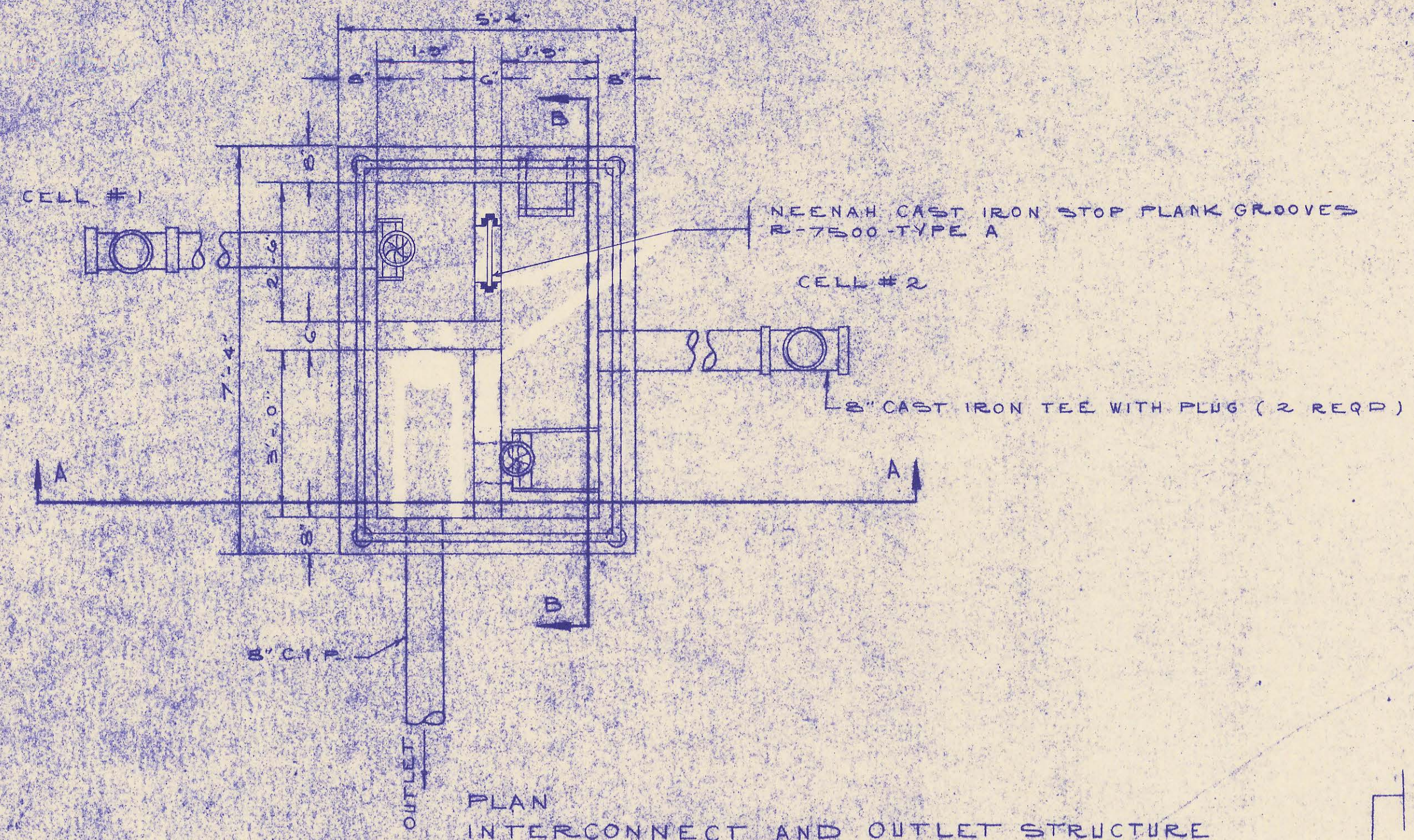
DETAIL Z



FENCE DETAIL

SHADYBROOK FARM ADDITION

K. O. TAYLOR, PE
SEPT. 21, 1972



3'-0"

WASTE STABILIZATION PONDS

KEEP OUT

SEDGWICK COUNTY

NOTE: CONTRACTOR SHALL FURNISH 4-18 GAUGE METAL SIGNS WITH YELLOW BACKGROUND AND BLACK LETTERS AND SHALL FASTEN TO THE FENCE

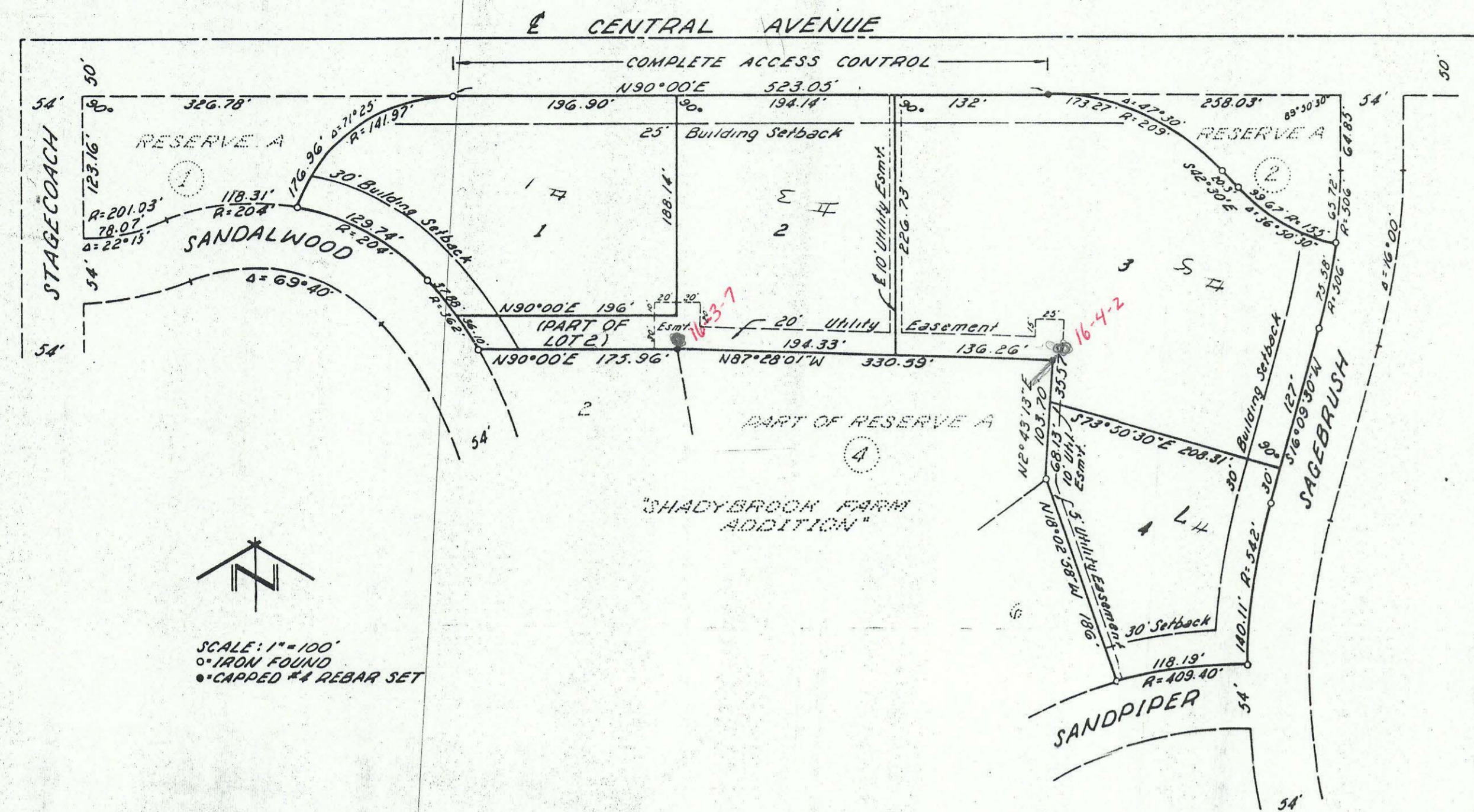
SHADYBROOK FARM ADDITION

K.O. TAYLOR, P.E.
SEPT 21, 1972

FINAL

SHADYBROOK FARM SECOND ADDITION SEDGWICK COUNTY, KANSAS

NW 1/4 SEC. 24, T27S, R2E



SCALE: 1"=100'
 0" IRON FOUND
 *CAPPED #4 REBAR SET

KNOW ALL MEN BY THESE PRESENTS THAT THE ANDOVER STATE BANK, MORTGAGEE ON THE LAND DESCRIBED IN THE SURVEYOR'S CERTIFICATE, DOES HEREBY CONSENT TO THIS PLAT OF "SHADYBROOK FARM SECOND ADDITION", SEDGWICK COUNTY, KANSAS.

THE ANDOVER STATE BANK

Kirk F. McConachie
 KIRK F. MC CONACHIE
 PRESIDENT

Jonathan V. Madsen
 JONATHAN V. MADSEN
 VICE-PRESIDENT

STATE OF KANSAS)
 SEDGWICK COUNTY) SS

THE FOREGOING INSTRUMENT WAS ACKNOWLEDGED BEFORE ME THIS 17th DAY OF August, 1987, BY KIRK F. MC CONACHIE, PRESIDENT, AND JONATHAN V. MADSEN, VICE-PRESIDENT, OF THE ANDOVER STATE BANK, ON BEHALF OF THE BANK.

Virginia A. Diebst, NOTARY PUBLIC
 My Appointment Expires: July 5, 1991

KNOW ALL MEN BY THESE PRESENTS THAT I, THE UNDERSIGNED OWNER OF THE LAND DESCRIBED IN THE SURVEYOR'S CERTIFICATE, HAVE CAUSED THE SAME TO BE SURVEYED AND PLATTED INTO LOTS 1, 2, AND 3 AS "SHADYBROOK FARM SECOND ADDITION", SEDGWICK COUNTY, KANSAS. EASEMENTS AS SHOWN HEREON ARE HEREBY GRANTED FOR THE CONSTRUCTION AND MAINTENANCE OF ALL PUBLIC UTILITIES. COMPLETE ACCESS CONTROL TO CENTRAL AVENUE OVER AND ACROSS THE NORTH LINE OF LOTS 1, 2, AND 3 IS HEREBY GRANTED TO THE APPROPRIATE GOVERNING BODY. STREETS, EASEMENTS, BUILDING SETBACKS, AND MINIMUM BUILDING PAD ELEVATION REQUIREMENTS AS PLATTED IN "SHADYBROOK FARM ADDITION", SEDGWICK COUNTY, KANSAS, CONTAINED HEREIN, ARE HEREBY VACATED BY VIRTUE OF K.S.A. 12-512 (b).

Janice G. Siefkes
 JANICE G. SIEFKES

STATE OF KANSAS)
 SEDGWICK COUNTY) SS

THE FOREGOING INSTRUMENT WAS ACKNOWLEDGED BEFORE ME THIS 19th DAY OF August, 1987, BY JANICE G. SIEFKES.

Michele R. Hall, NOTARY PUBLIC
 MICHELE R. HALL
 My Appointment Expires: 8 August, 1988

ENTERED ON TRANSFER RECORD THIS _____ DAY OF _____, 1987.

_____, COUNTY CLERK
 DON WRIGHT

THIS PLAT APPROVED AND ALL DEDICATIONS SHOWN HEREON ACCEPTED BY THE BOARD OF COUNTY COMMISSIONERS OF SEDGWICK COUNTY, KANSAS, THIS _____ DAY OF _____, 1987.

- BOARD OF COUNTY COMMISSIONERS
- _____, CHAIRMAN
TOM SCOTT
 - _____, CHAIRMAN PROTEM
MARK F. SCHROEDER
 - _____, COMMISSIONER
DAVID BAYOUTH
 - _____, COMMISSIONER
BERNARD A. HENTZEN
 - _____, COMMISSIONER
BILLY Q. MCCRAY
 - ATTEST: _____, COUNTY CLERK
DON WRIGHT

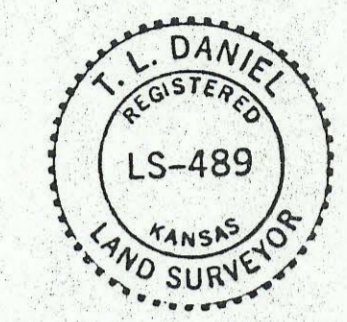
STATE OF KANSAS)
 SEDGWICK COUNTY) SS

WE, TERRA TECH LAND SURVEYING, INC., A CORPORATION REGISTERED AND AUTHORIZED TO PRACTICE LAND SURVEYING IN THE STATE OF KANSAS, HEREBY CERTIFY THAT WE HAVE SURVEYED AND PLATTED "SHADYBROOK FARM SECOND ADDITION", SEDGWICK COUNTY, KANSAS, AND THE ACCOMPANYING PLAT IS A TRUE AND CORRECT EXHIBIT OF SUCH SURVEY, BEING A REPLAT OF PROPERTY DESCRIBED AS FOLLOWS:

LOTS 1, 7, 8, 9, AND 10, AND THAT PART OF RESERVE A LYING NORTH OF A LINE EXTENDED FROM THE MOST SOUTHERLY SOUTHEAST CORNER OF SAID LOT 1 TO THE MOST WESTERLY SOUTHWEST CORNER OF SAID LOT 8, AND THAT PART OF RESERVE A LYING EAST OF A LINE EXTENDED FROM THE MOST WESTERLY NORTHWEST CORNER OF SAID LOT 7 TO THE MOST WESTERLY SOUTHWEST CORNER OF SAID LOT 8, ALL IN BLOCK 4, "SHADYBROOK FARM ADDITION", SEDGWICK COUNTY, KANSAS, TOGETHER WITH ALL OF STARLING STREET AS PLATTED THEREIN.

TERRA TECH LAND SURVEYING, INC.

T. L. Daniel
 T. L. DANIEL LS#489



21 August, 1987
 DATE

THIS PLAT OF "SHADYBROOK FARM SECOND ADDITION", SEDGWICK COUNTY, KANSAS HAS BEEN SUBMITTED TO AND APPROVED BY THE WICHITA-SEDGWICK COUNTY, METROPOLITAN AREA PLANNING COMMISSION, WICHITA, KANSAS, THIS 6th DAY OF August, 1987.

WICHITA-SEDGWICK COUNTY METROPOLITAN AREA PLANNING COMMISSION

John Terry Moore, CHAIRMAN
 JOHN TERRY MOORE
Marvin S. Krout, SECRETARY
 MARVIN S. KROUT

THIS PLAT APPROVED AND ALL DEDICATIONS SHOWN HEREON ACCEPTED BY THE CITY COUNCIL OF THE CITY OF WICHITA, KANSAS, THIS 13th DAY OF OCT, 1987.

WICHITA CITY COUNCIL

- _____, MAYOR
ROBERT G. KNIGHT
- Dale E. Rea*, DEPUTY CITY CLERK
DALE E. REA

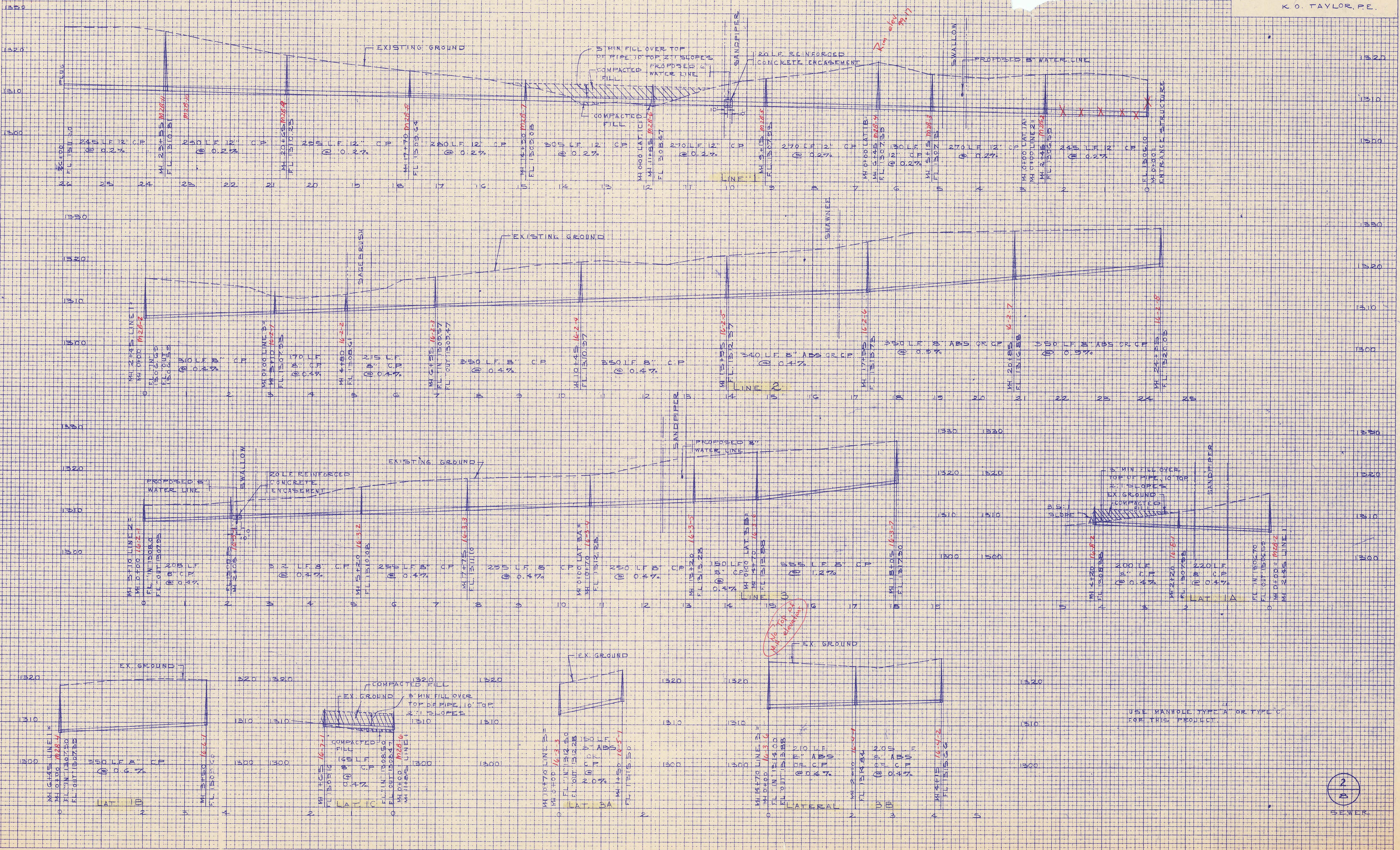
STATE OF KANSAS)
 SEDGWICK COUNTY) SS

THIS IS TO CERTIFY THAT THIS INSTRUMENT WAS FILED FOR RECORD IN THE REGISTER OF DEEDS OFFICE AT _____ O'CLOCK _____ M., ON THE _____ DAY OF _____, 1987.

_____, REGISTER OF DEEDS
 PAT KETTLER
 _____, DEPUTY
 ED RESA

FINAL SURVEY NO.	SURVEYED	BY	DATE
	PLOTTED		
	TEMPLATE		
	AREAS CHECKED		

ORIGINAL SURVEY NO.	SURVEYED	BY	DATE
	PLOTTED		
	TEMPLATE		
	AREAS CHECKED		



M.H. for 24\"/>

USE MANHOLE TYPE 'A' OR TYPE 'C' FOR THIS PROJECT.