

4MC-077

PLANS FOR

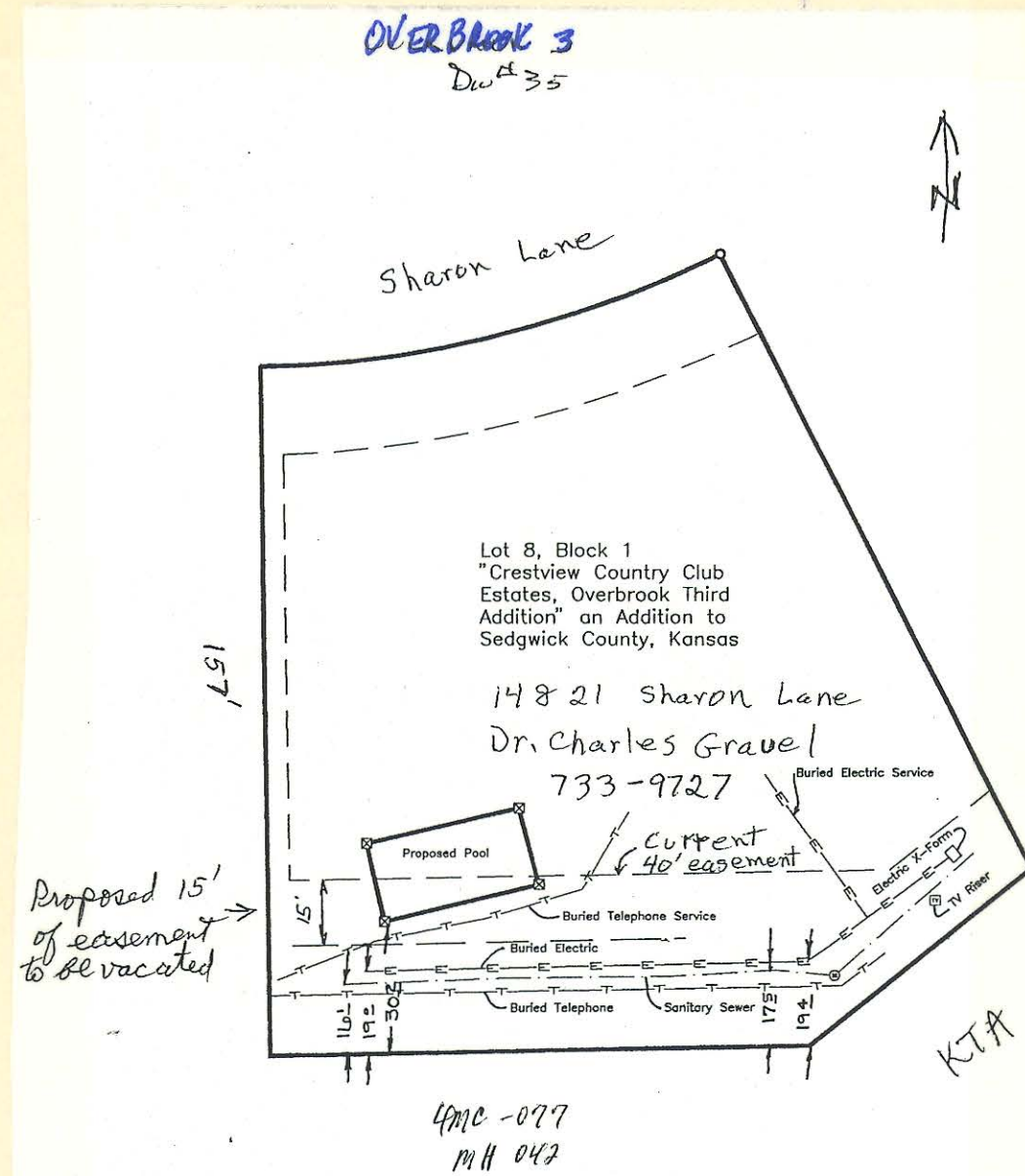
SANITARY SEWER EXTENSION

CRESTVIEW COUNTRY CLUB ESTATES OVERBROOK ADDITION

TO

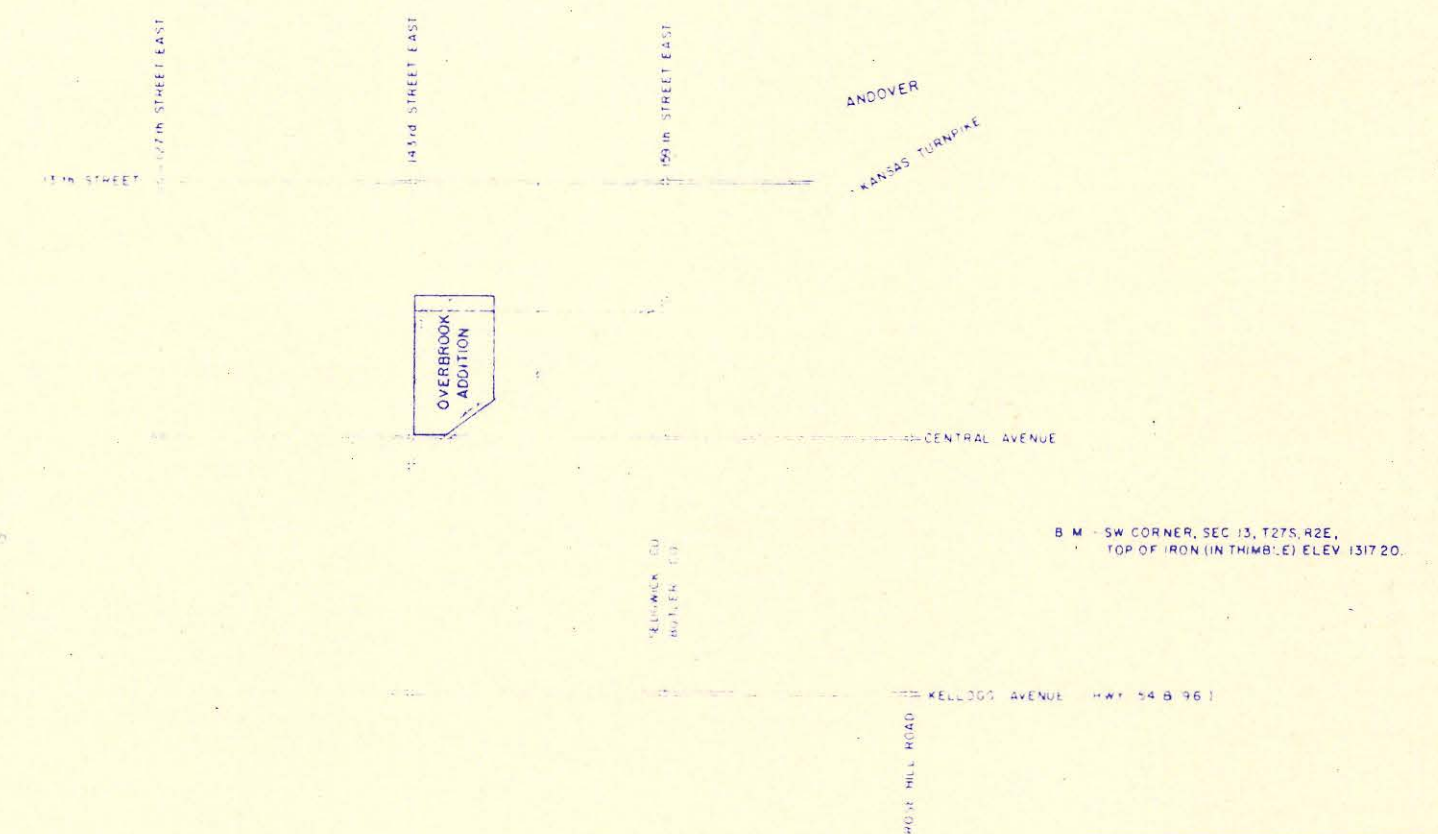
SEDGWICK COUNTY, KANSAS

1978



There is currently a 40' easement at the back. He requested vacation of the N. 20' of that. K&T&E and us approved vacating the N. 15'. MAPC will likely approve that 8/12/99. PST

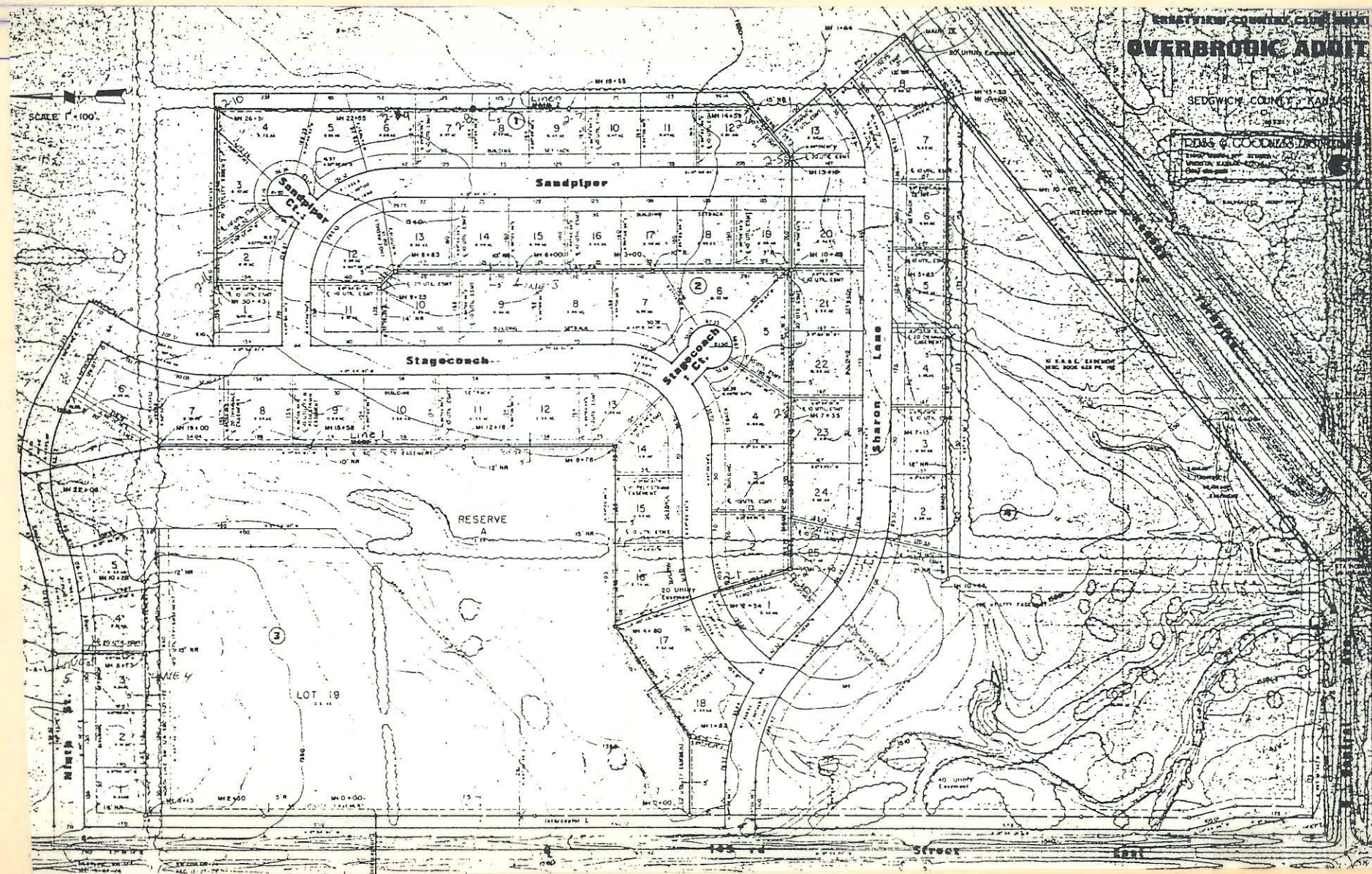
1" = 30'
8/11/99
by Trish



LOCATION MAP

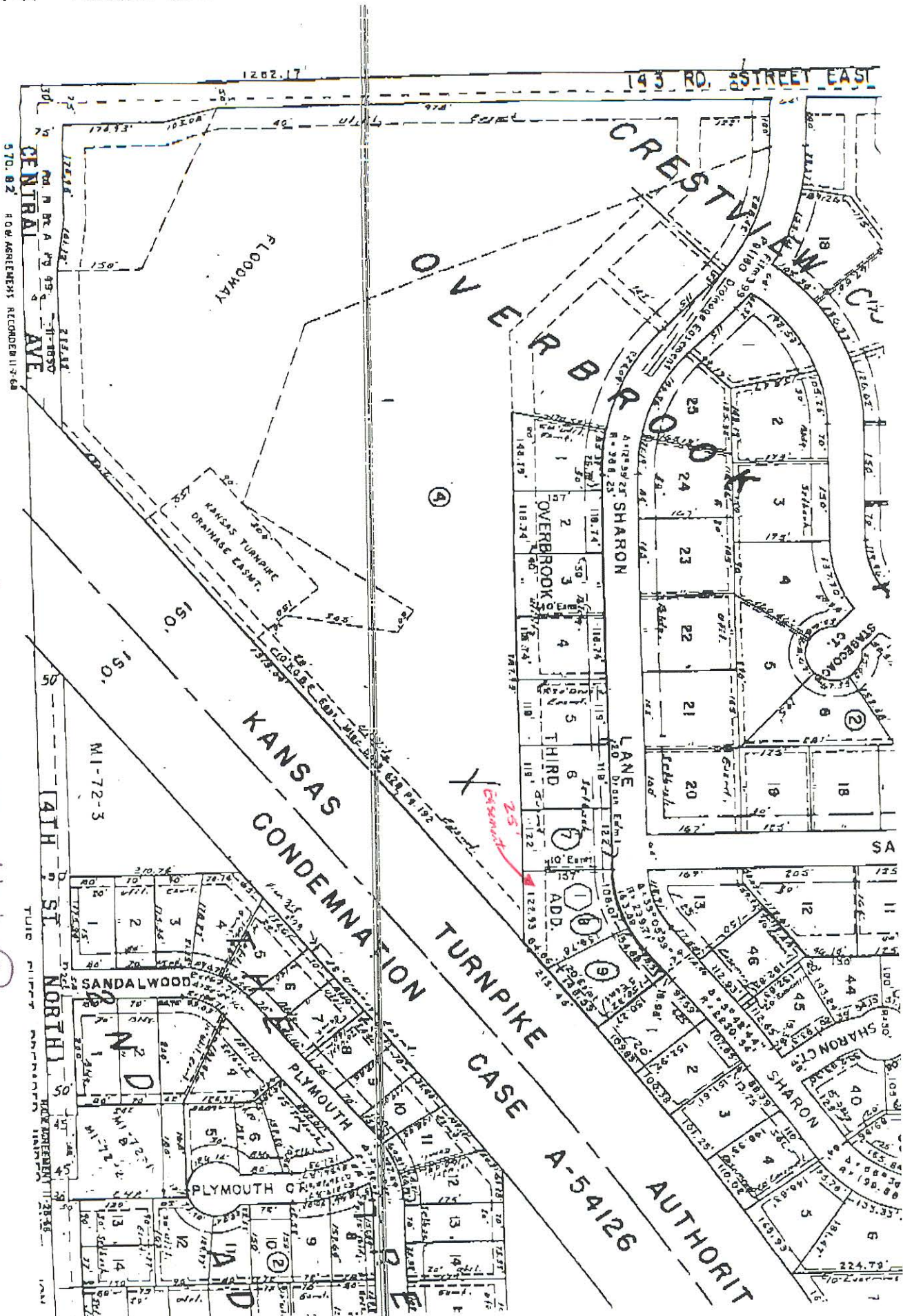
DEISS & GOODNESS ENGINEERS
2161 WEST 21ST AVENUE
WICHITA, KANSAS 67204
(316) 261-0113

SCALE GIVEN: 1" = 30'
DATE: 4-8-78
SHEET: 1 OF 8



4MC-077

Replat Lots 1-8 block 1

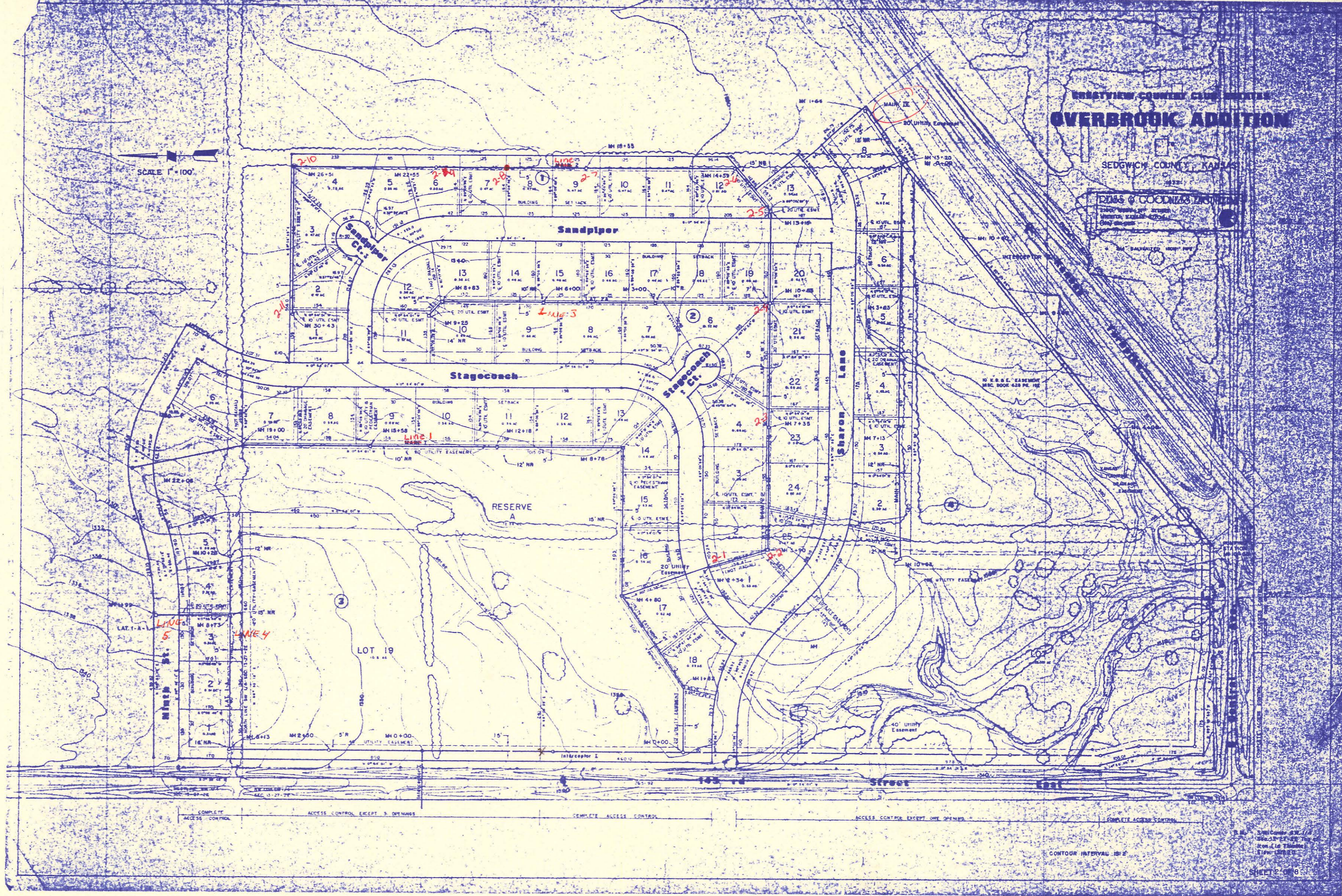


BRISTOL COUNTY, MASSACHUSETTS
OVERBROOK ADDITION

SEDGWICK COUNTY, KANSAS

PLANS OF GOODNESS LOCATION

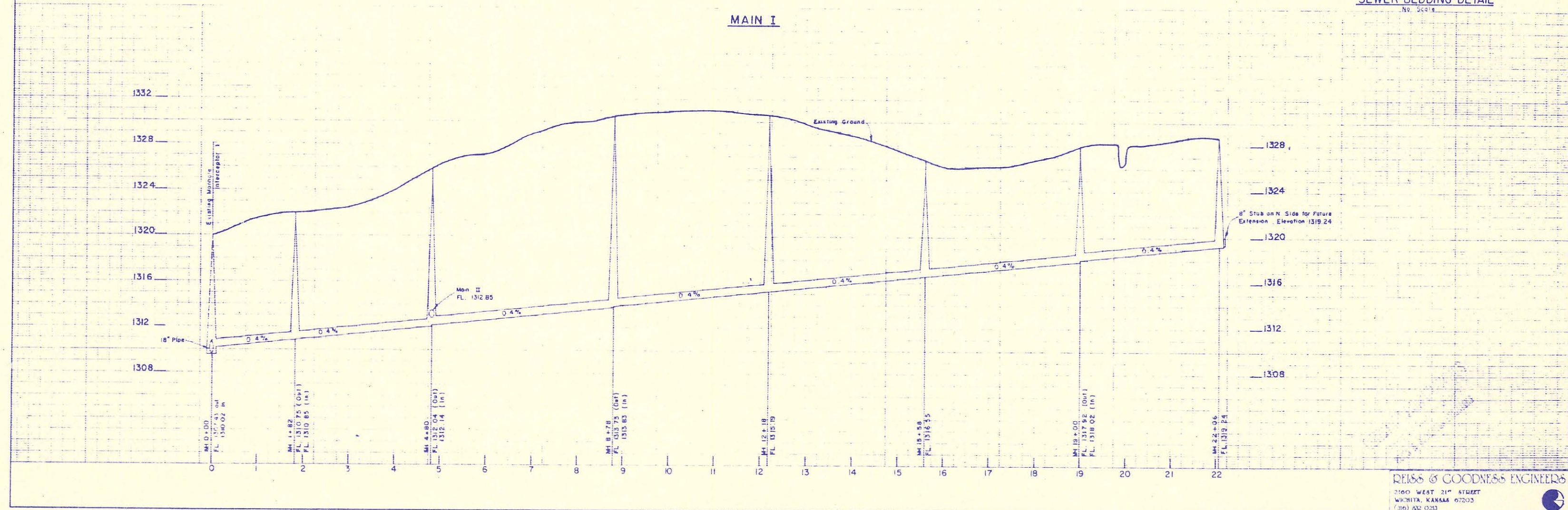
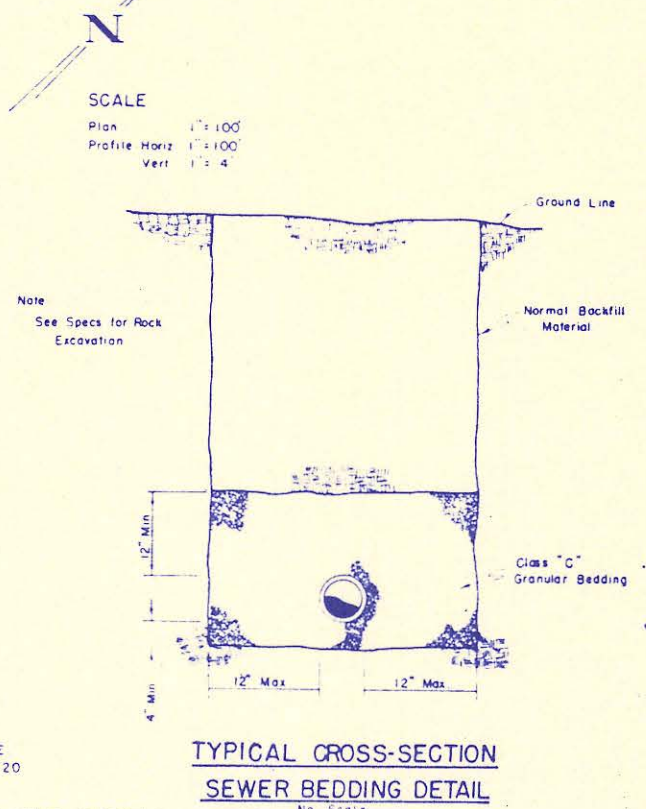
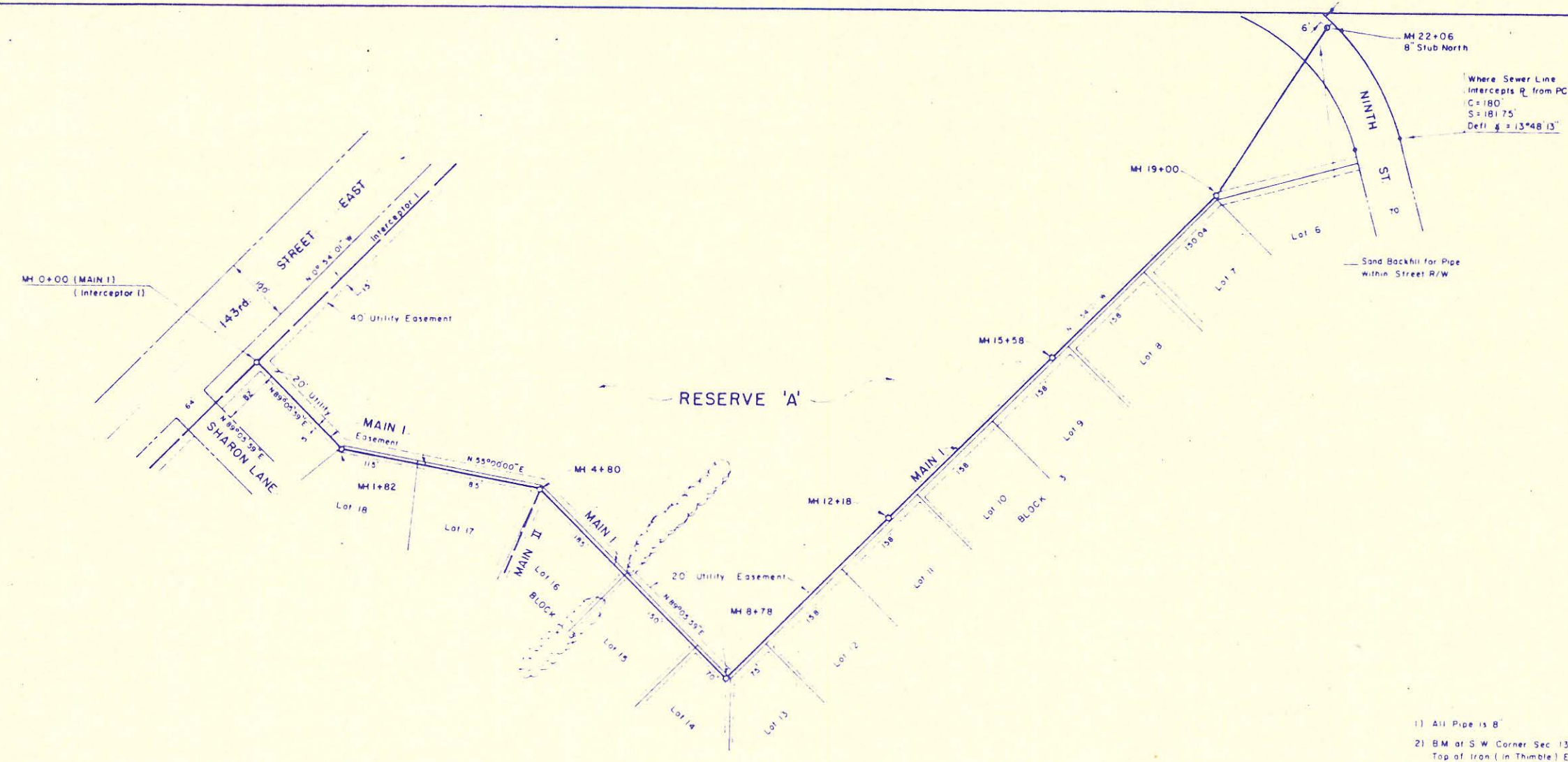
SCALE 1" = 100'

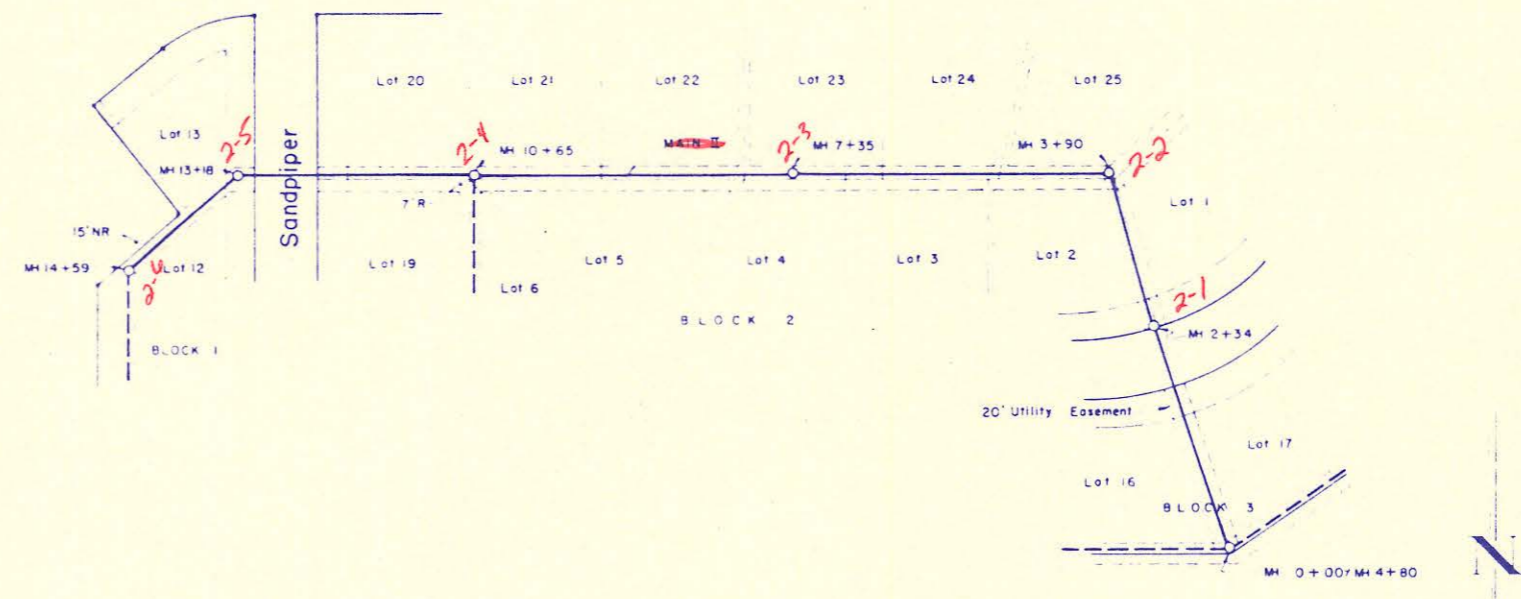
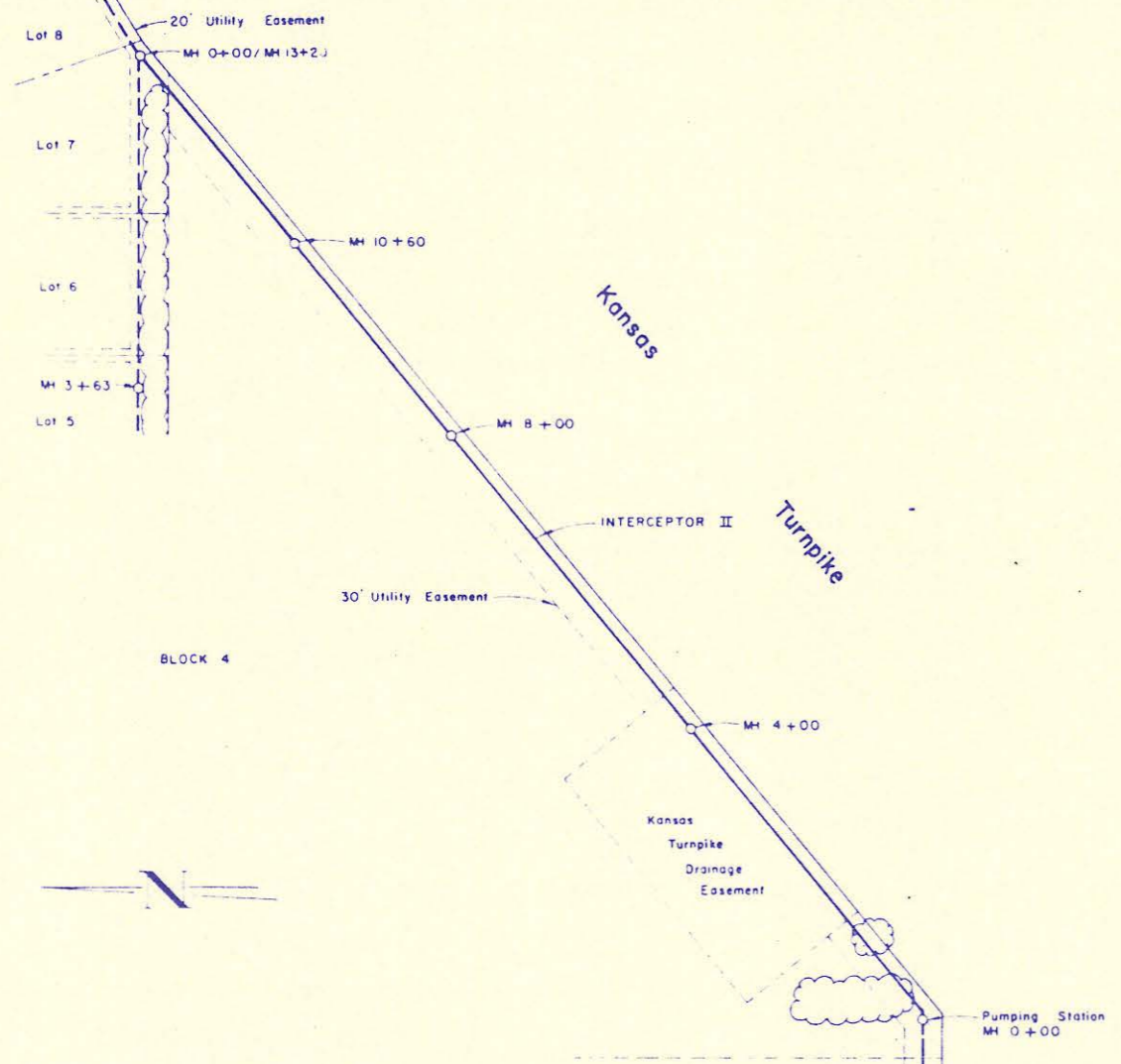


COMPLETE ACCESS CONTROL ACCESS CONTROL EXCEPT 3' DIMENSIONS COMPLETE ACCESS CONTROL ACCESS CONTROL EXCEPT ONE OPENING COMPLETE ACCESS CONTROL

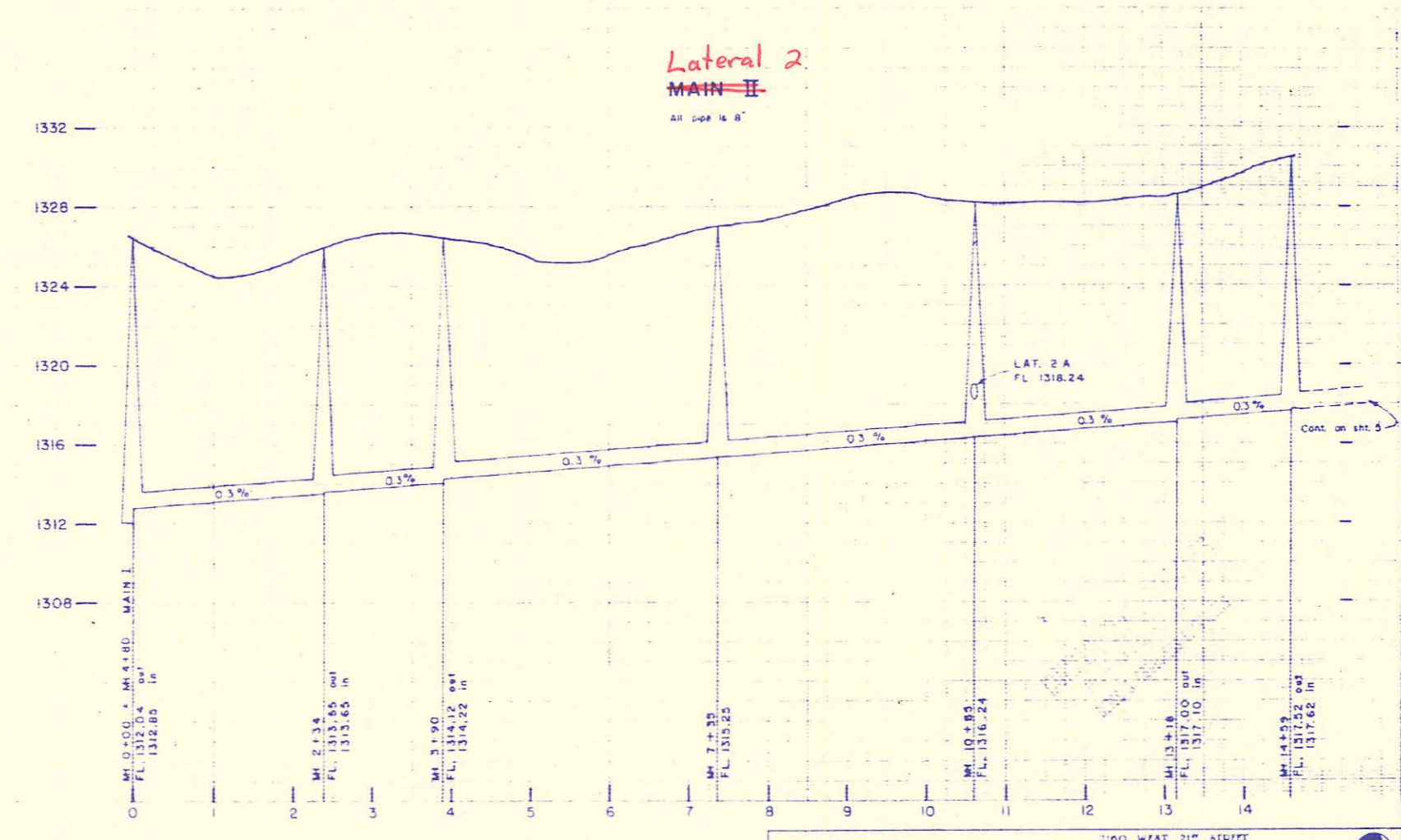
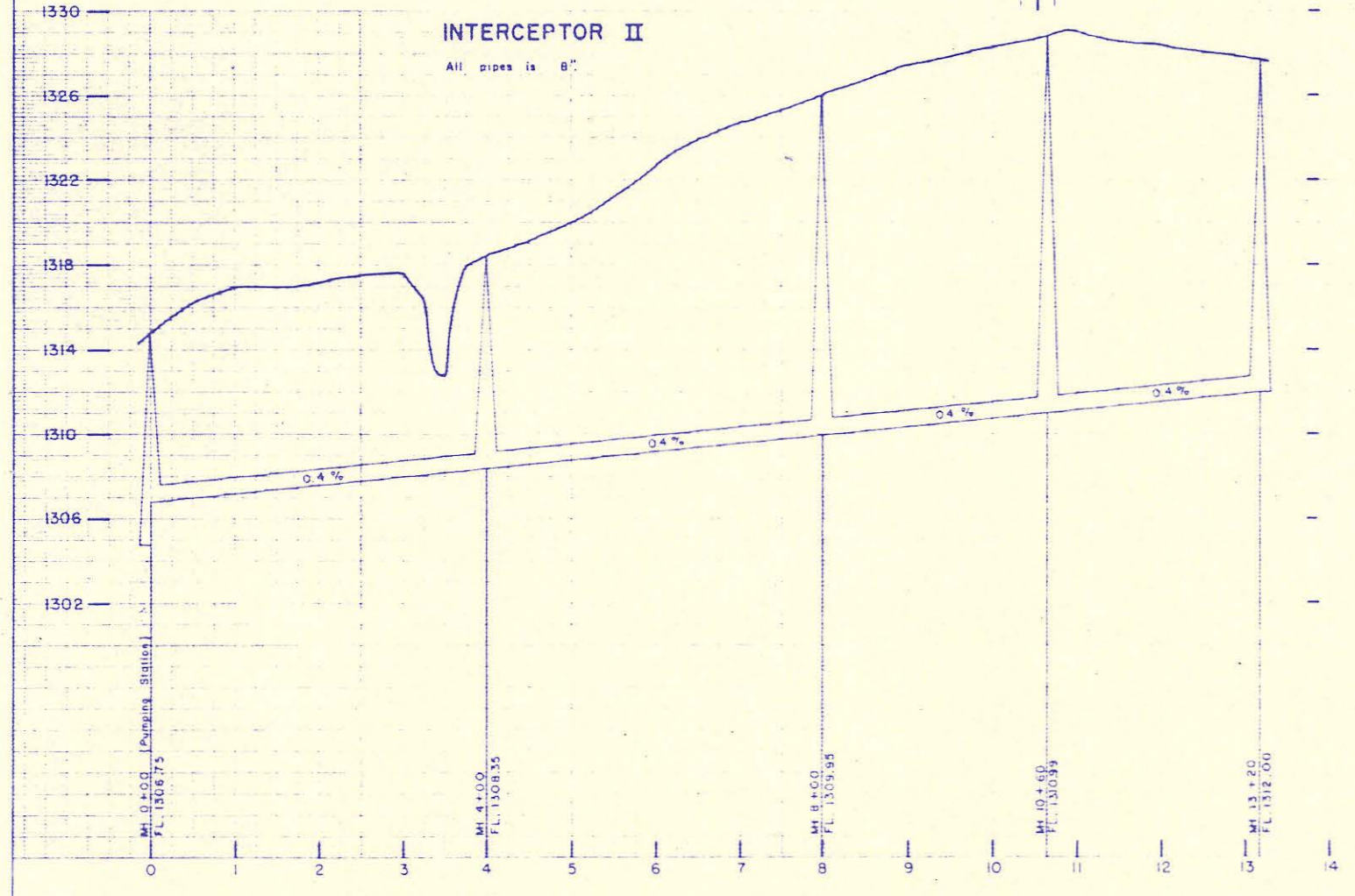
CONTOUR INTERVAL 10'

DATE: 11-15-76
BY: [Signature]
PROJECT: OVERBROOK ADDITION
SHEET: 2 OF 8

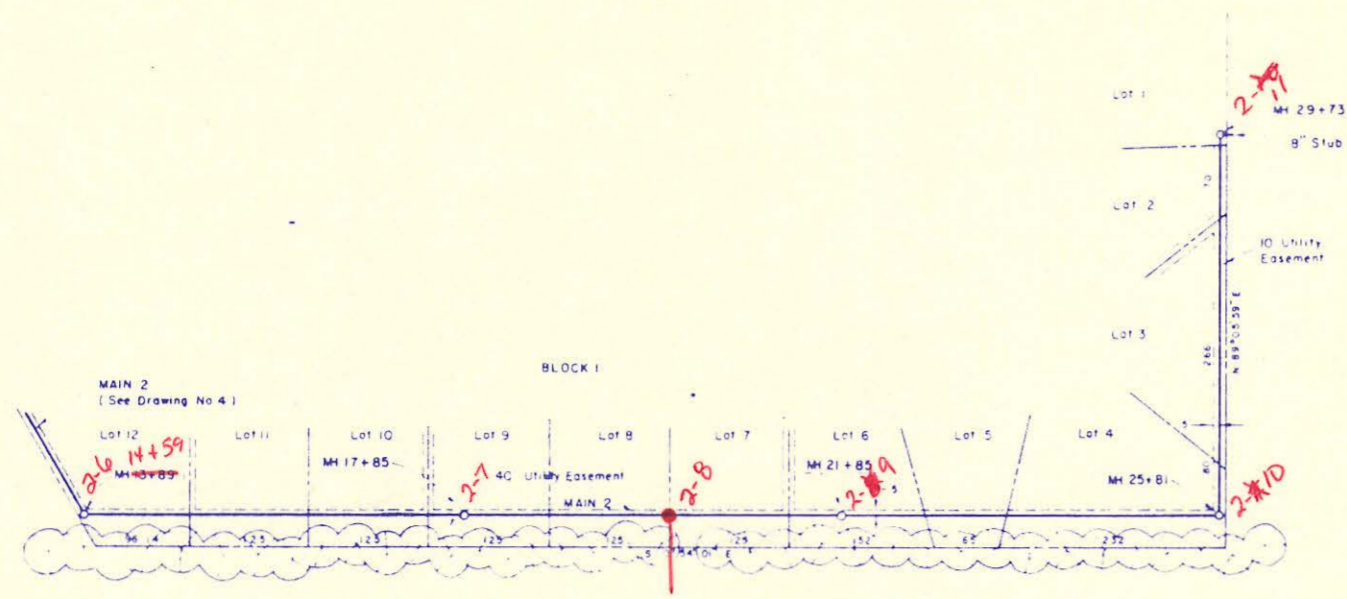




SCALE
 Plan 1" = 100'
 Profile Horiz. 1" = 100'
 Vert. 1" = 4'

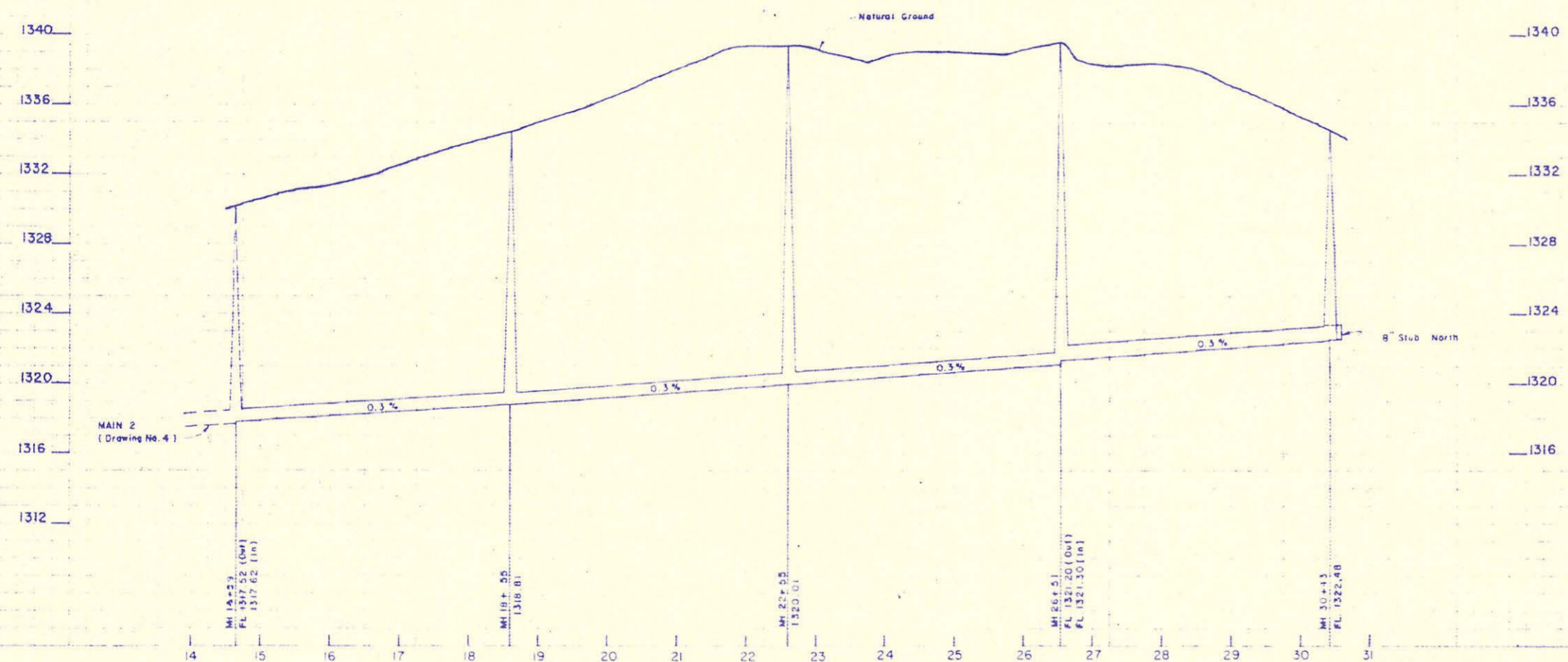


REISS & GOODNESS ENGINEERS
 2160 WEST 21ST AVENUE
 WICHITA, KANSAS 67204
 (316) 635-0323

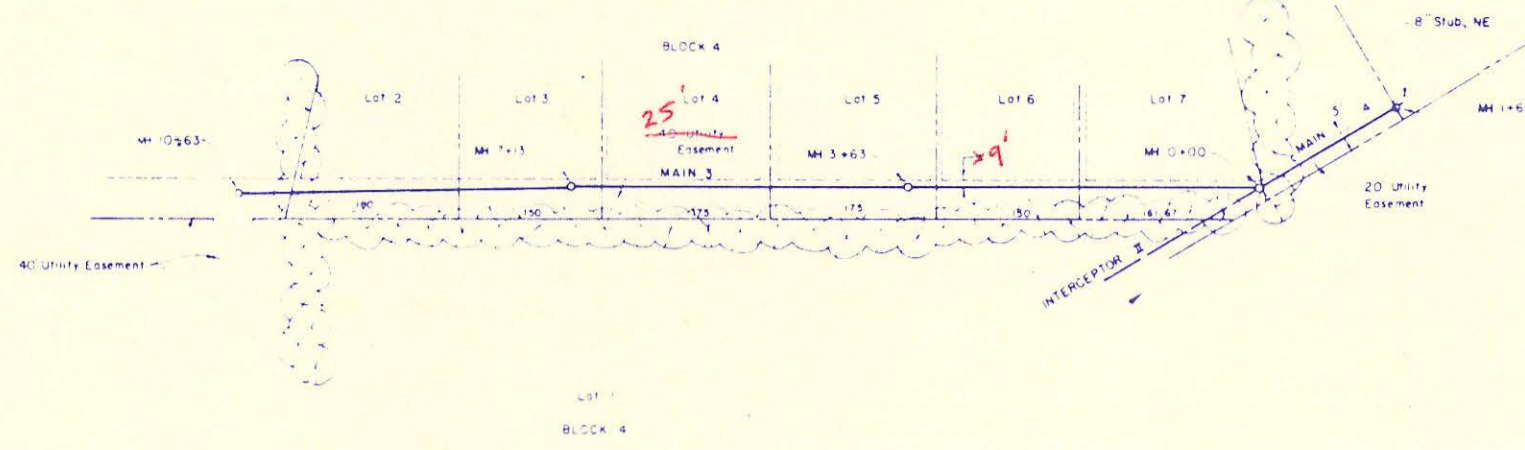


NOTE
 1) All Pipe is 8"
 2) B.M. of SW Corner, Section 13, T27S, R2E,
 Top of Iron Pin (Theatre), Elevation 137.20

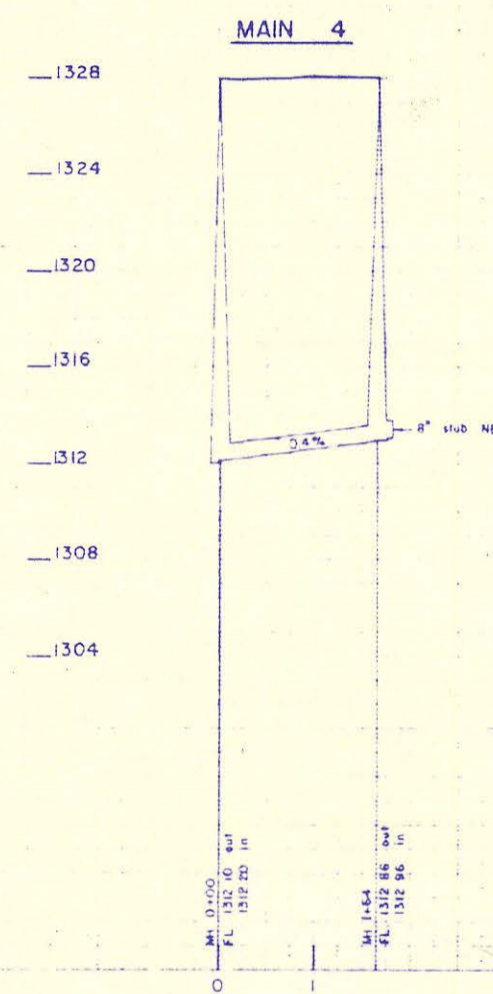
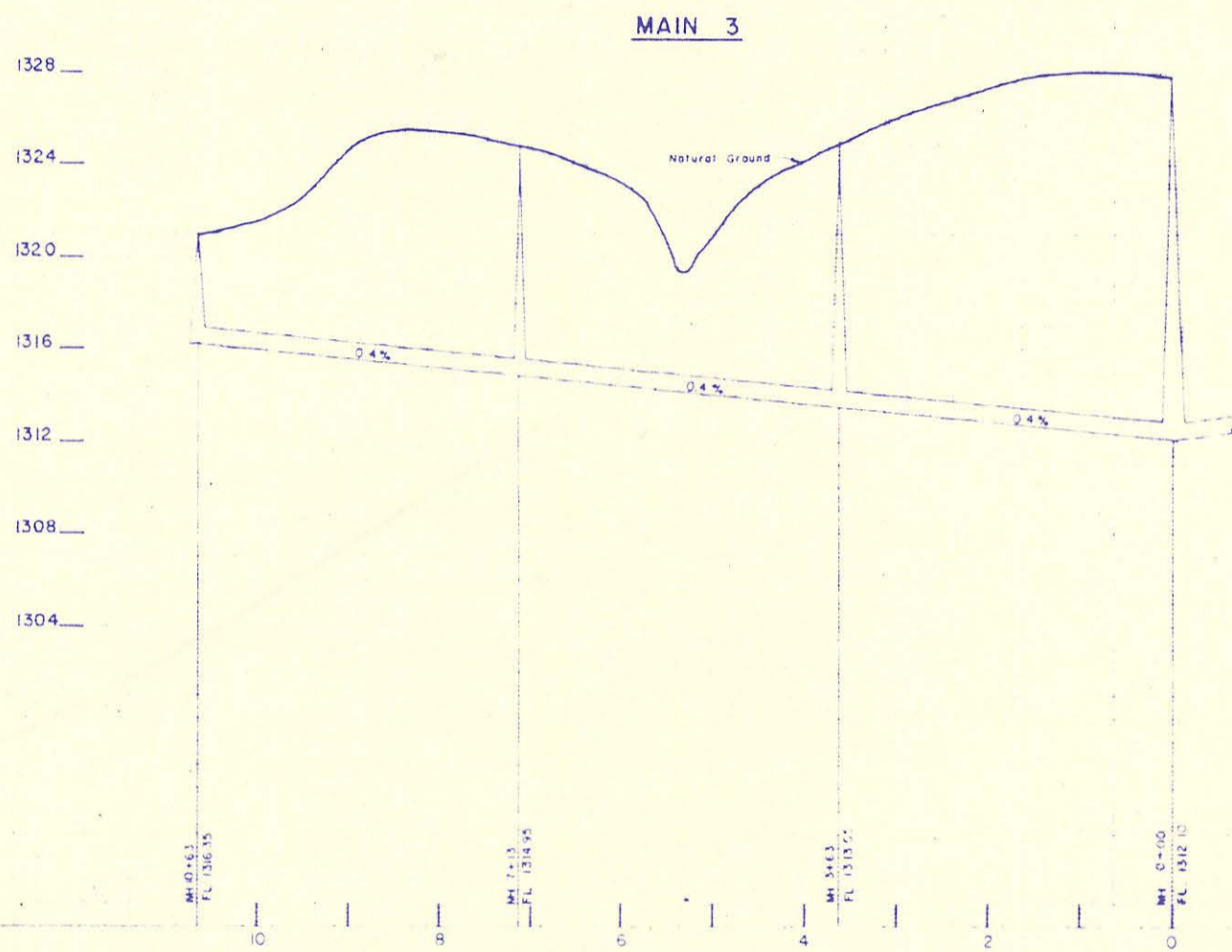
Lateral 2
~~MAIN 2~~



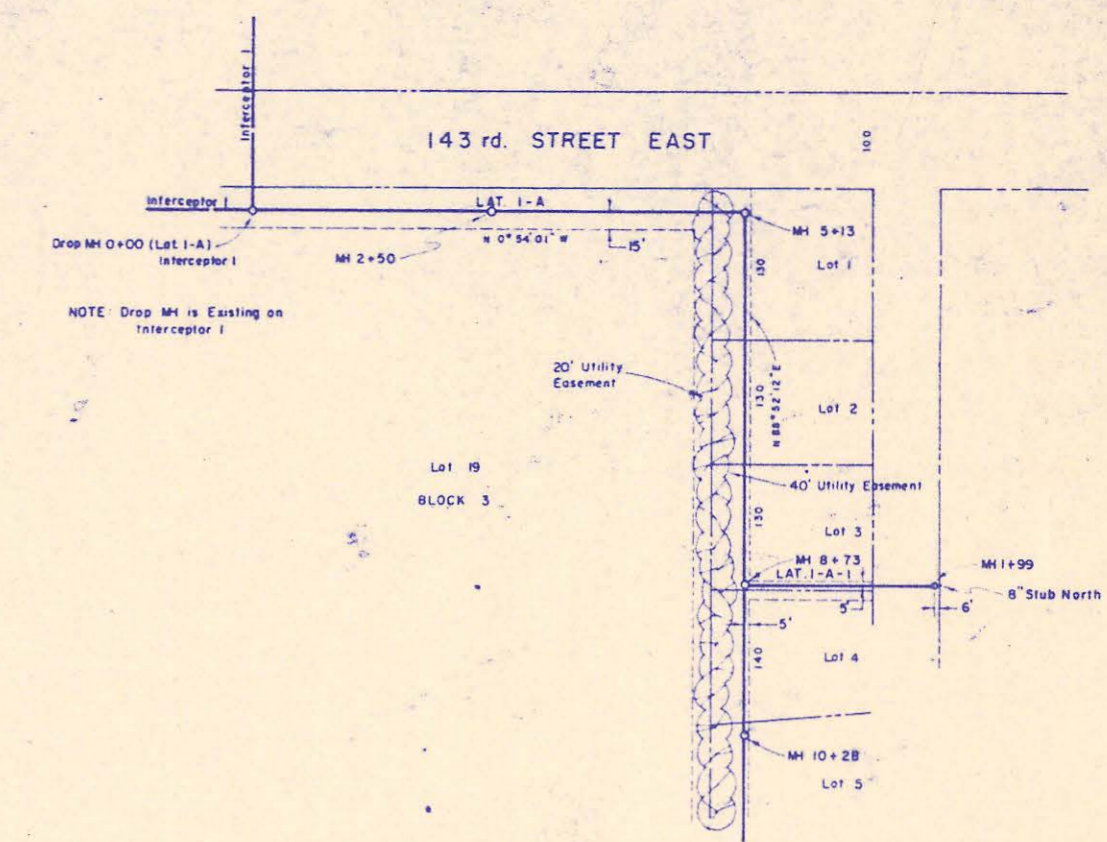
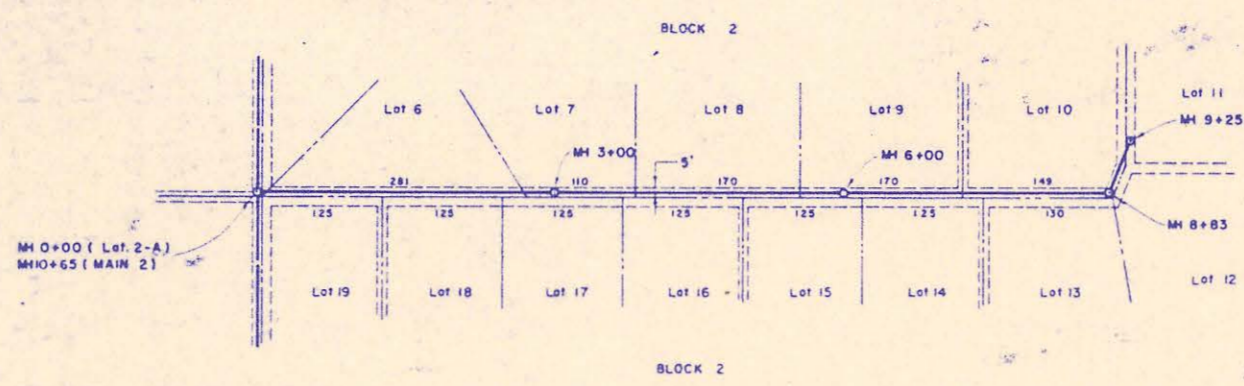
DEISS & GOODNESS ENGINEERS
 2160 WEST 21ST AVENUE
 WICHITA, KANSAS 67203
 (316) 622-1222



NOTE
 1) All Pipe is 8"
 2) B.M. at S.W. Corner, Sec. 13, T27S, 22E, Top of iron 1 in. diameter. Elevation 1317.20



REISS & GOODNESS ENGINEERS
 2100 WEST 21ST STREET
 WICHITA, KANSAS 67203
 (316) 261-0233



Scale
Plan 1" = 100'
Profile Horiz. 1" = 100'
Vert. 1" = 4'

NOTE:
1) All Pipe is 8"
2) B.M. at S.W. Corner, Sec. 13, T27S, R2E,
Top of Iron (in Tumbler) Elevation 1317.20

