

PROJECT NO.	FISCAL YEAR	SHEET NO.	TOTAL SHEETS
	1986	1	3

# BUREAU OF PUBLIC SERVICES 4MC-081

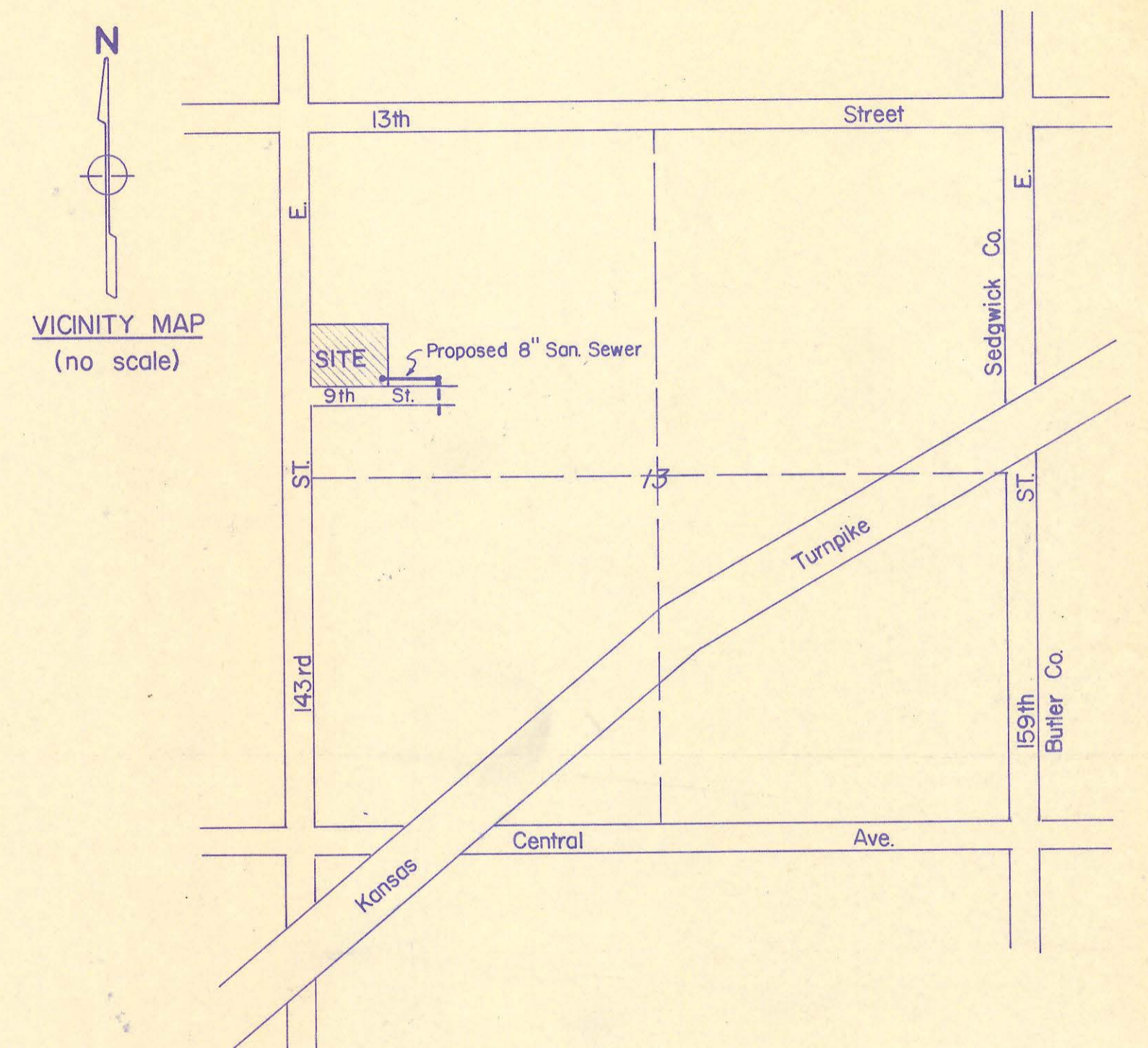


**INDEX OF SHEETS**

- Sheet 1 - Cover Sheet
- Sheet 2 - Plan & Profile of 8" San. Sewer
- Sheet 3 - Sewer Appurtenances Detail

**BENCHMARK**

1. 60d Spike in powerpole, 45' East Southeast of the W.1/4 corner Sec.13-T.27S.-R.2E. Elev. = 1336.24 M.S.L.
2. RR Spike in powerpole, 43' Southeast of the N.W corner Sec.13-T.27S.-R.2E. Elev. = 1352.87 M.S.L.
3. Top of rim, North side, of existing San. Sewer M.H., Sta. 0+00. Elev. = 1336.72, M.S.L.



## 8" SANITARY SEWER EXTENSION FOR SEDGWICK COUNTY FIRE DISTRICT NO. 1 TO SERVE NOORDHOEK ADDITION SEDGWICK COUNTY, KANSAS

**NOTES**

1. NOTIFY THE FOLLOWING COMPANIES PRIOR TO ANY TRENCHING.

ARKLA	942-8350
BELL TELEPHONE CO.	1-571-2115
CABLEVISION	266-6817
GAS SERVICE CO.	263-7511
KANSAS GAS & ELECTRIC	261-6248
KANSAS ONE CALL	1-800-344-7233
2. ALL BLOCK CORNERS AND CONTROL POINTS WILL BE PROTECTED. IF REMOVED DURING CONSTRUCTION, CONTRACTOR WILL HAVE THEM REPLACED BY A LICENSED ENGINEER OR LAND SURVEYOR AT HIS EXPENSE.

**CONVENTIONAL SIGNS**

WIRE FENCE	
HEDGE ROW	
RAILROADS	
SURVEY LINE	
RIGHT OF WAY	
TELEPHONE POLE	
POWER POLE	
COMB. POWER & TELEPHONE	
TOWNSHIP LINE	
CONSTRUCTION LIMITS	
GUARD FENCE	
TREES	

NET LENGTH OF PROJECT	142	FT.	_____	MILES
NET LENGTH OF BRIDGES	_____	FT.	_____	MILES
NET LENGTH OF ROAD	_____	FT.	_____	MILES
EXCEPTIONS	_____	FT.	_____	MILES
ADDITIONS	_____	FT.	_____	MILES
GROSS LENGTH OF PROJECT	_____	FT.	_____	MILES

PLANS PREPARED BY:  
**MOHRING & ASSOCIATES**  
CONSULTING ENGINEERS  
WICHITA, KANSAS  
DATE: MAY 2, 1986

APPROVED: \_\_\_\_\_ DATE: \_\_\_\_\_

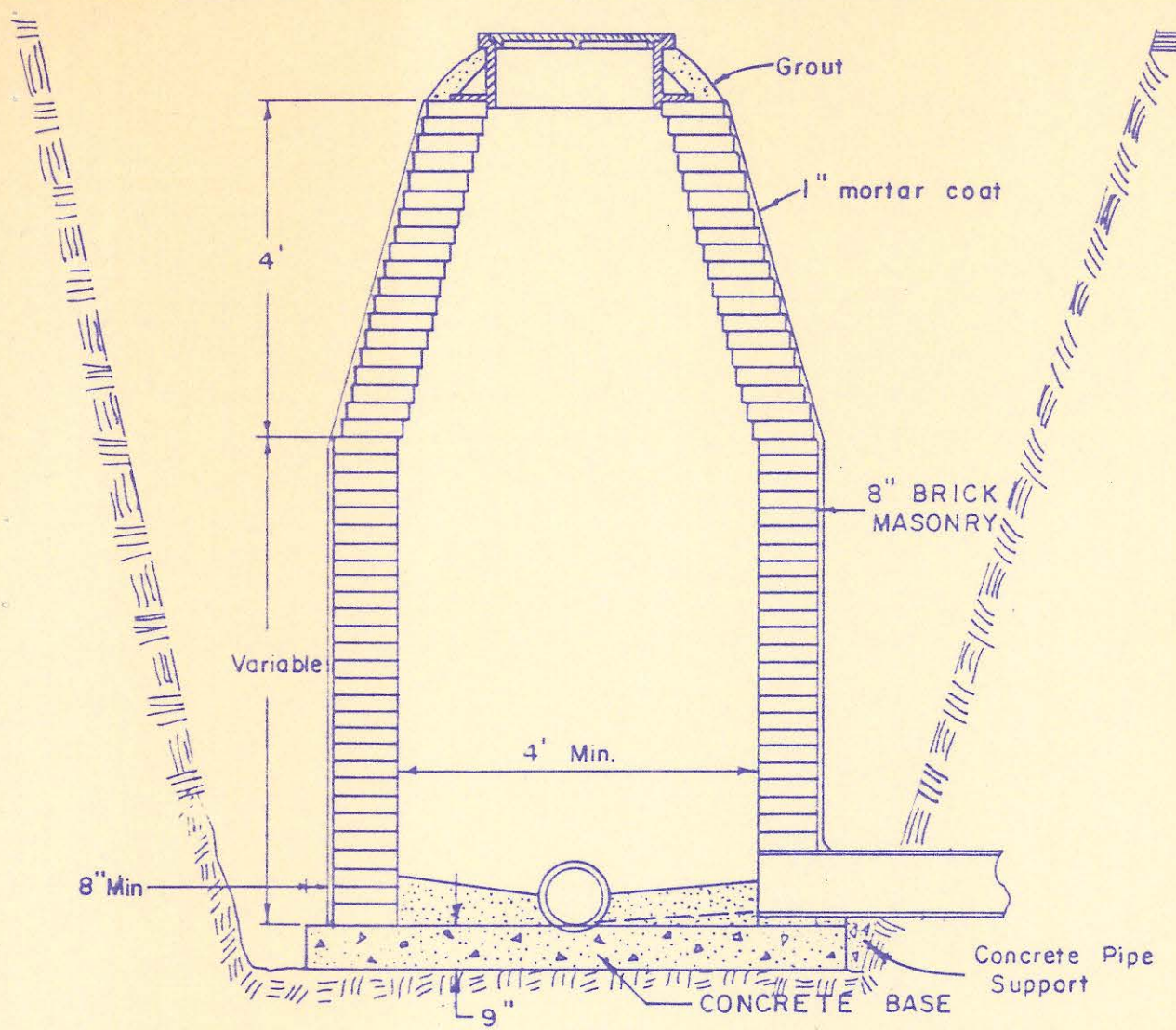
APPROVED:  
*Dwight C. Spears*  
COUNTY ENGINEER / DIRECTOR OF PUBLIC SERVICES  
DATE: June 6, 1986

APPROVED: \_\_\_\_\_ DATE: 6/6/86  
*Bernard A. Herby*  
CHAIRMAN  
BOARD OF COUNTY COMMISSIONERS

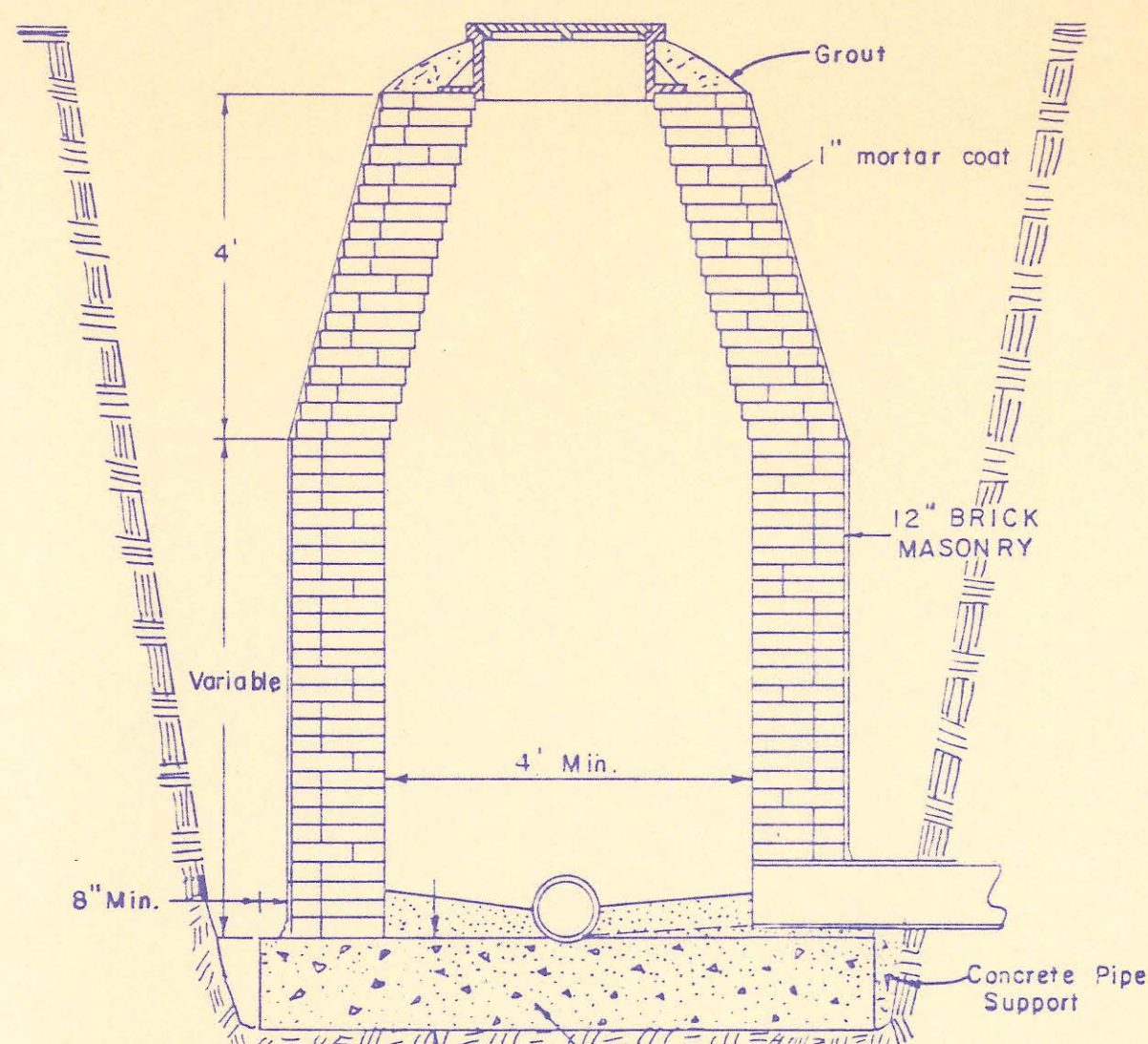
FILED:  
FILED IN THE OFFICE OF  
THE SEDGWICK COUNTY CLERK  
*[Signature]*  
COUNTY CLERK  
DATE: 6/6/86



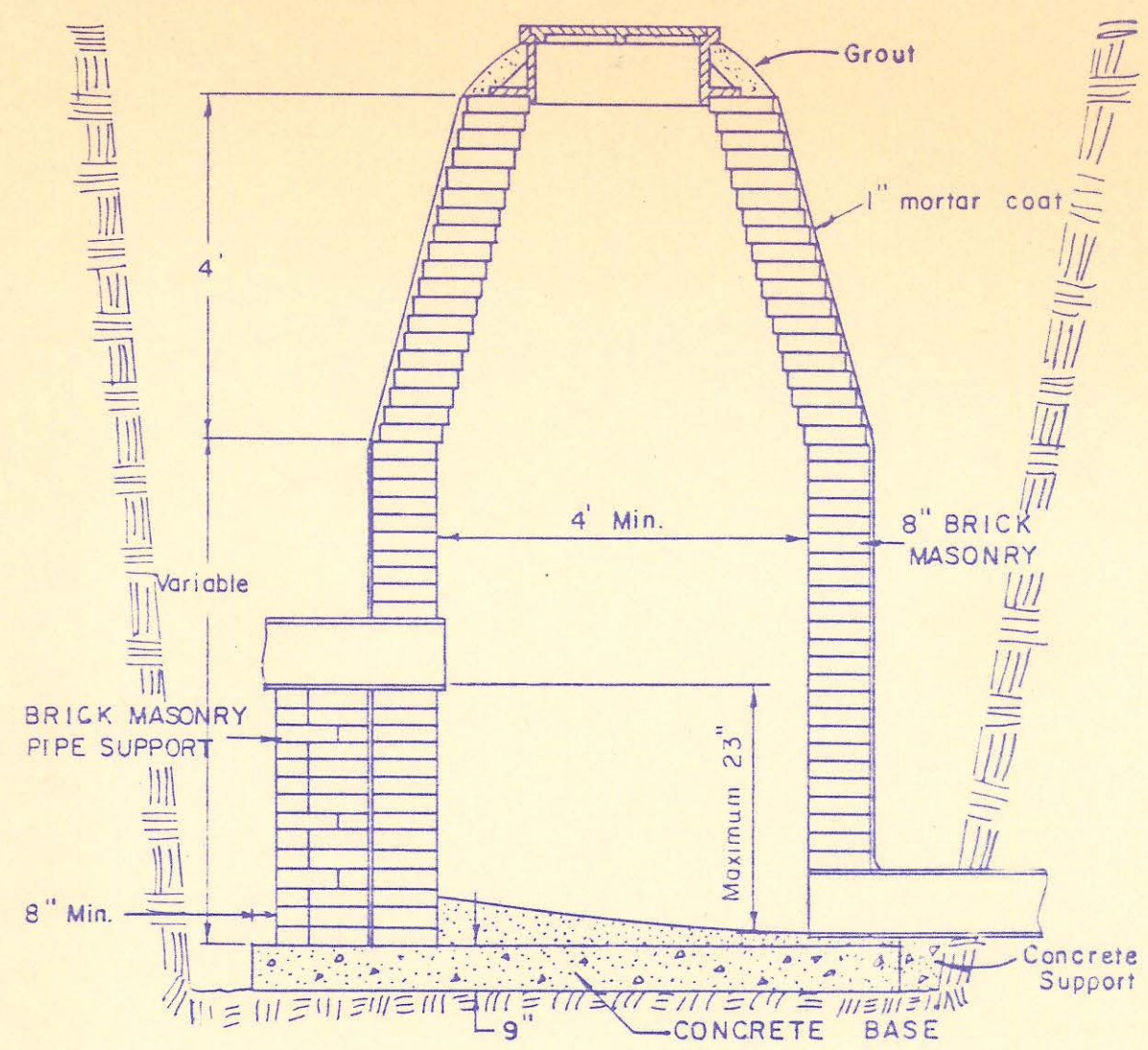
4MC-081



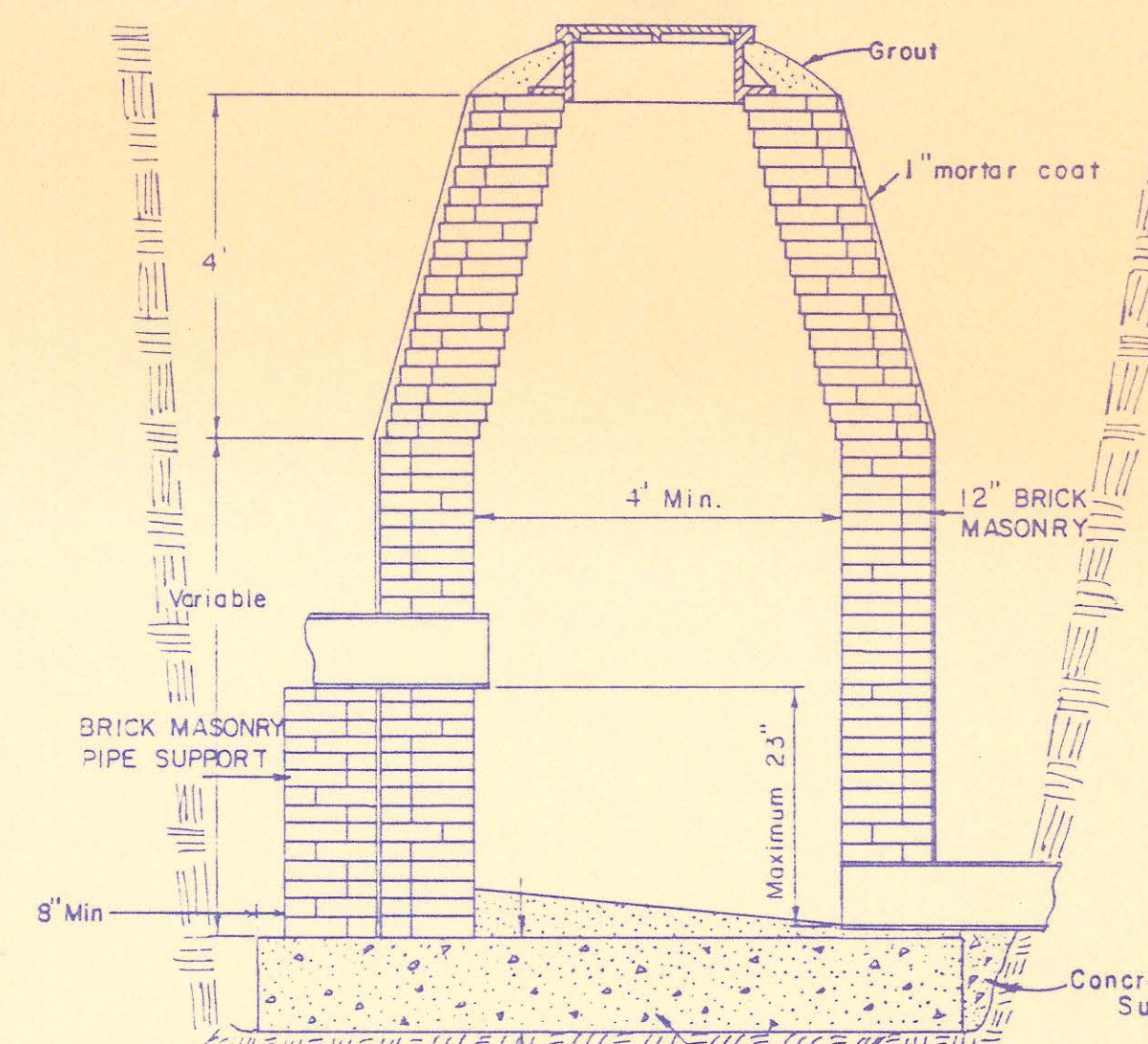
STANDARD MANHOLE TYPE "A"



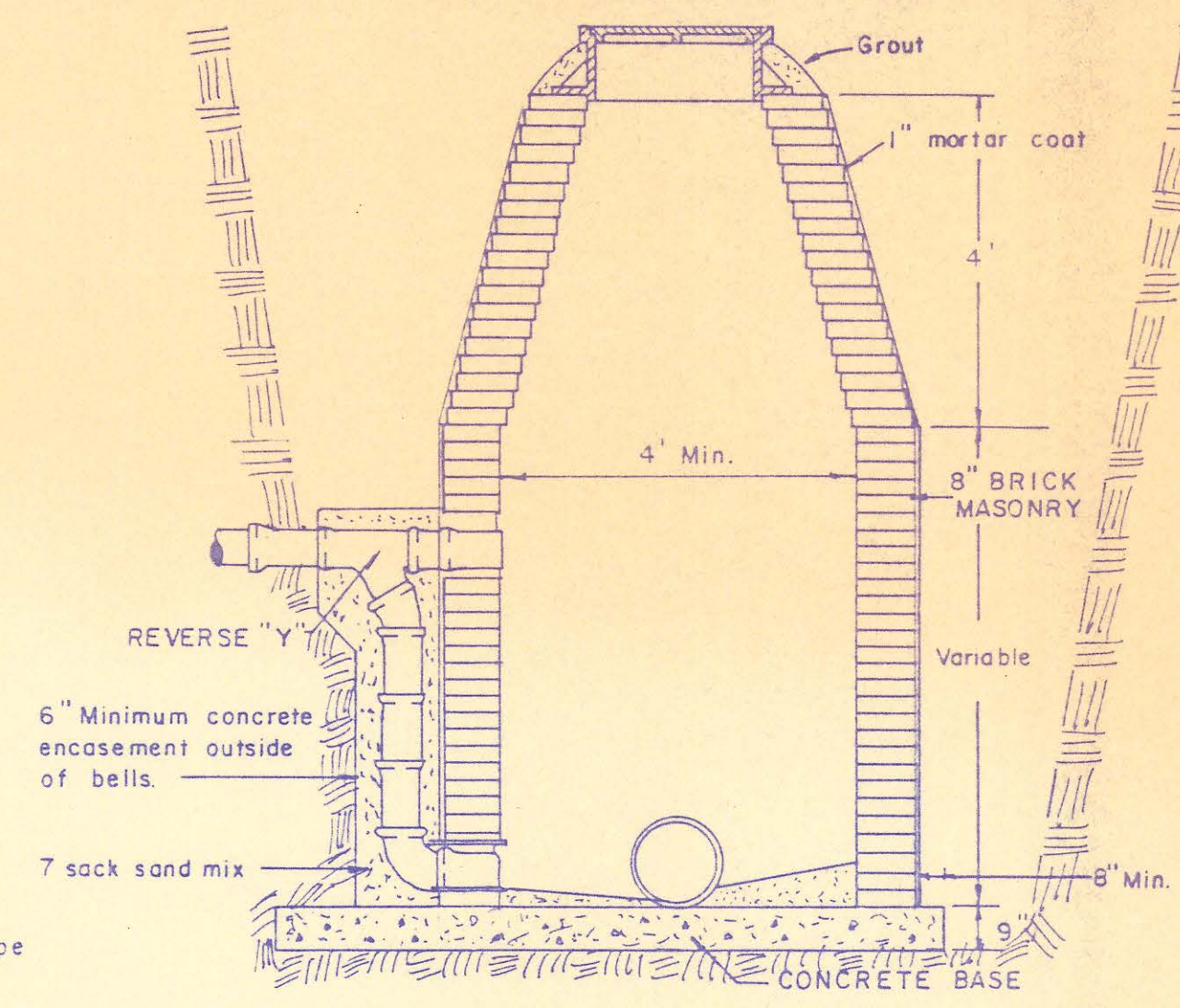
STANDARD MANHOLE TYPE "B"



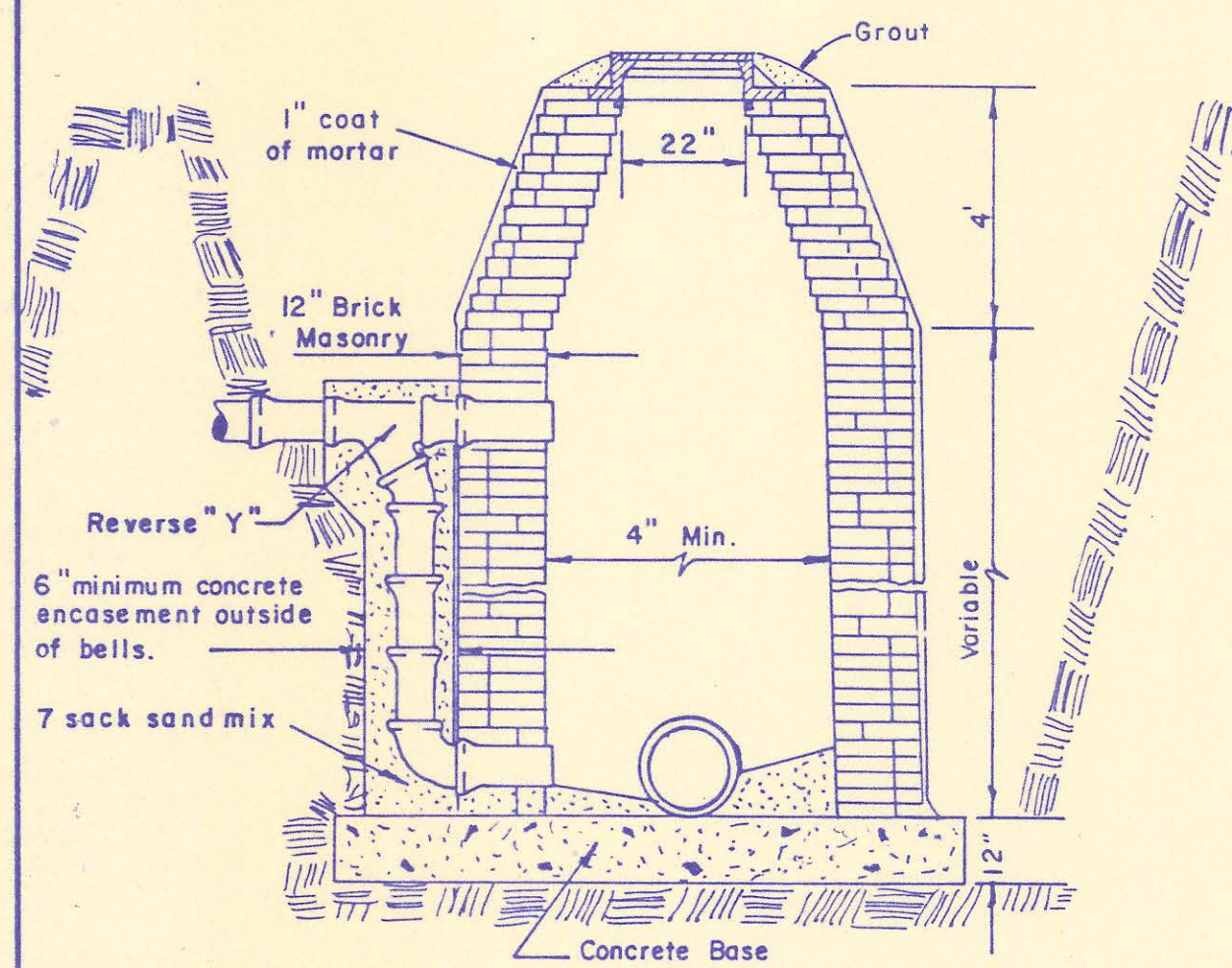
INSIDE DROP MANHOLE TYPE "A"



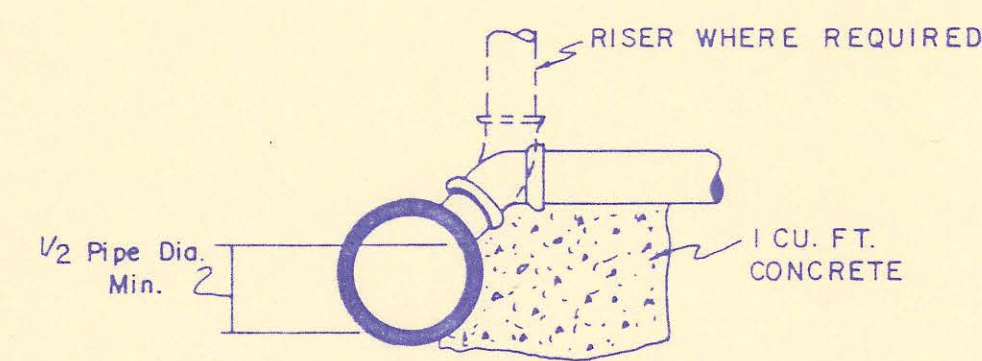
INSIDE DROP MANHOLE TYPE "B"



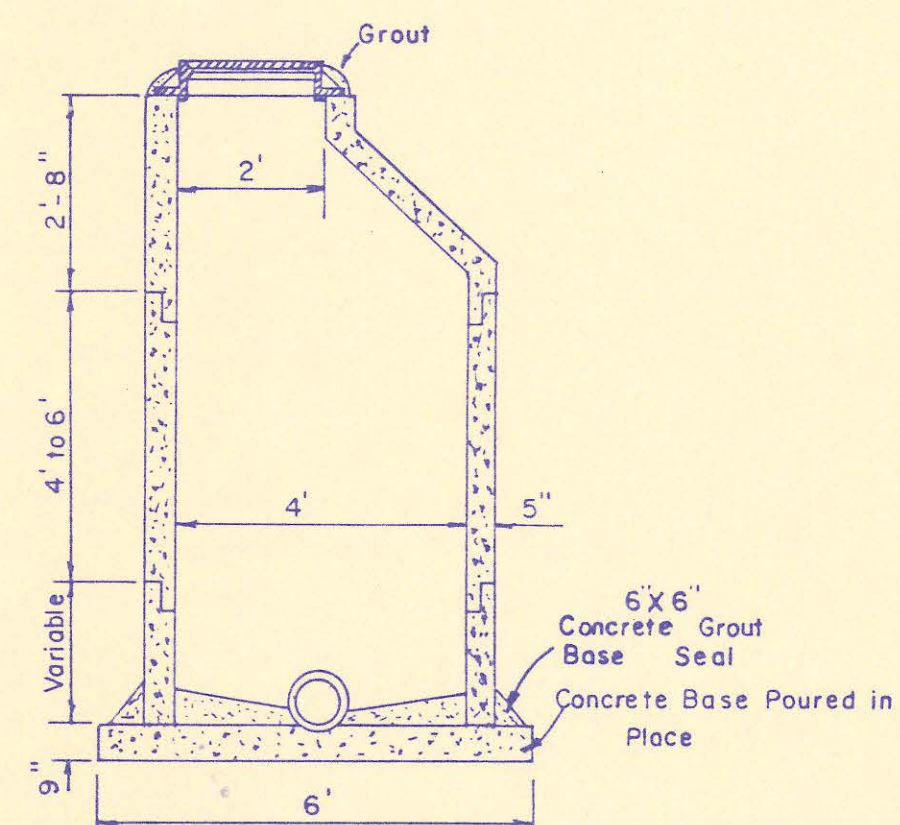
OUTSIDE DROP MANHOLE TYPE "A"



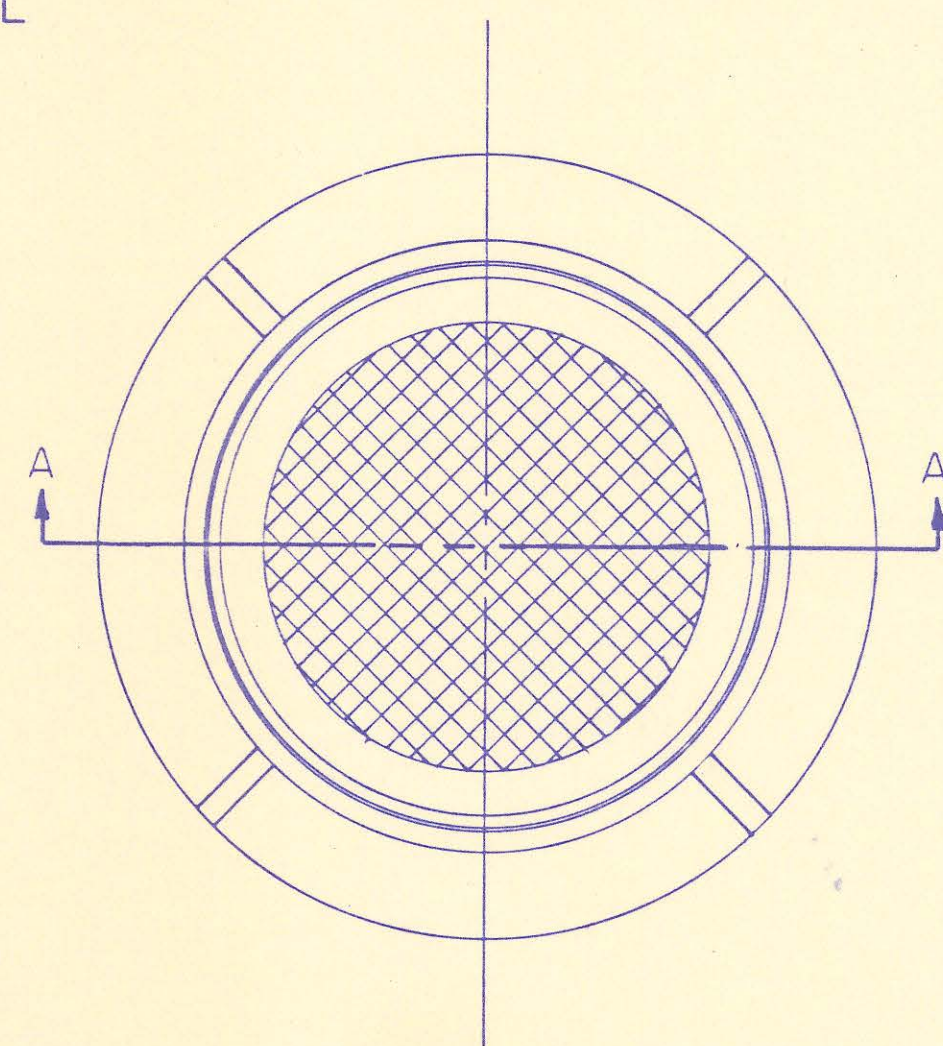
OUTSIDE DROP MANHOLE TYPE "B"



WYE SUPPORT DETAIL

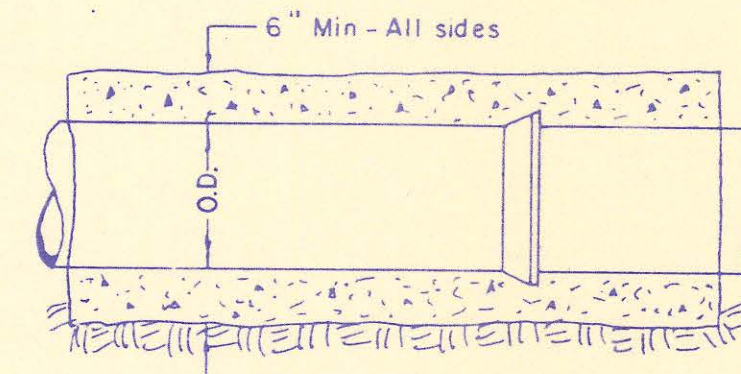


PRECAST CONCRETE MANHOLE

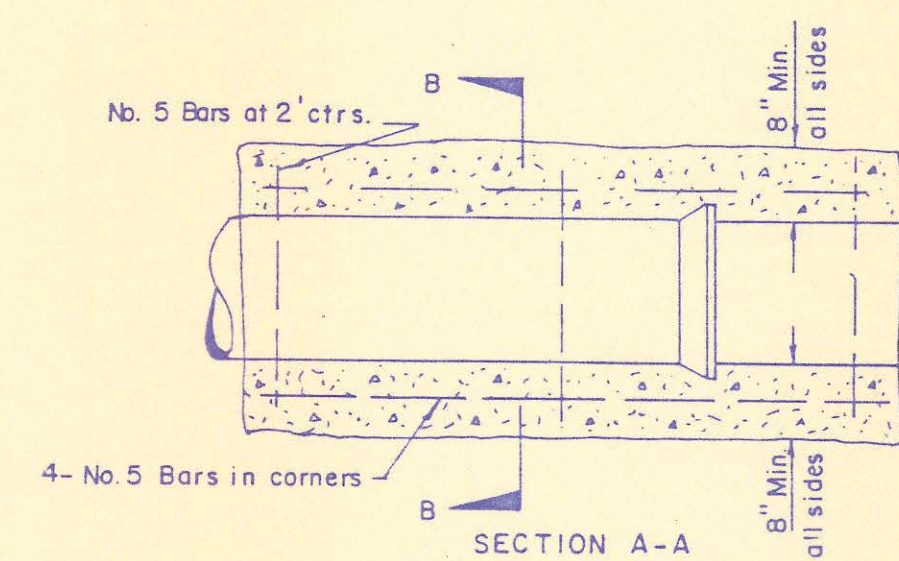
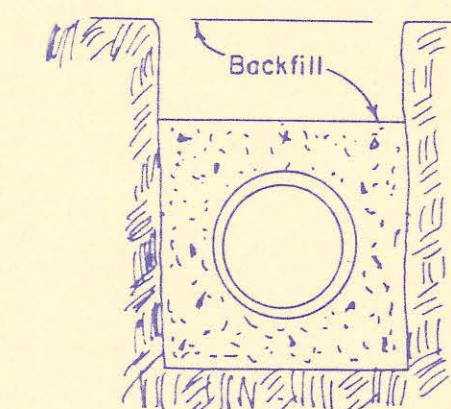


MANHOLE COVER

Clay & Bailey # 2010  
Lid 110 lbs.  
Ring 240 lbs.



CONCRETE ENCASEMENT FOR COVER

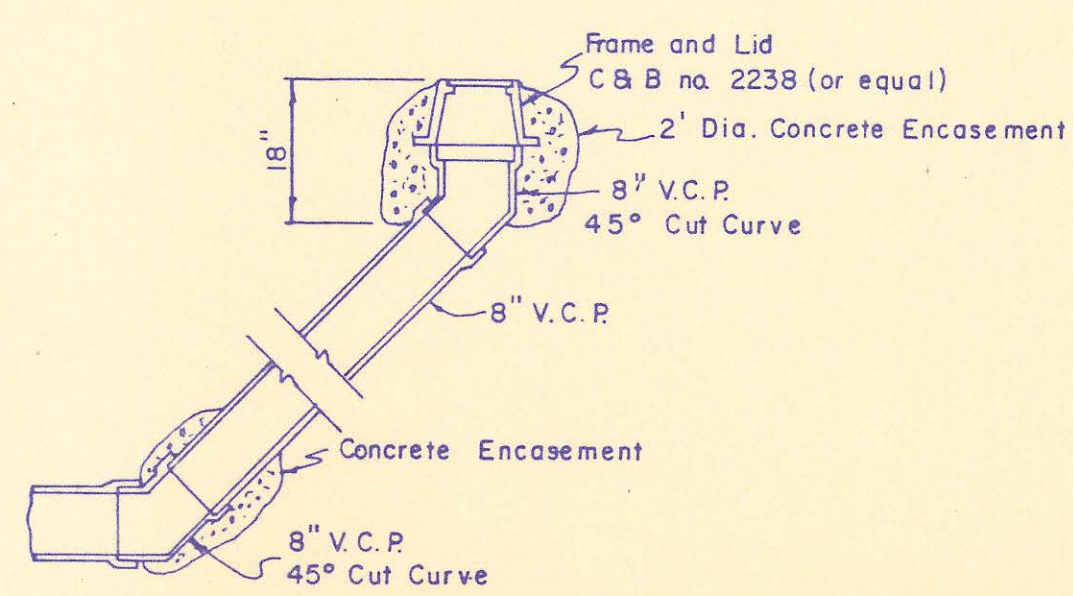
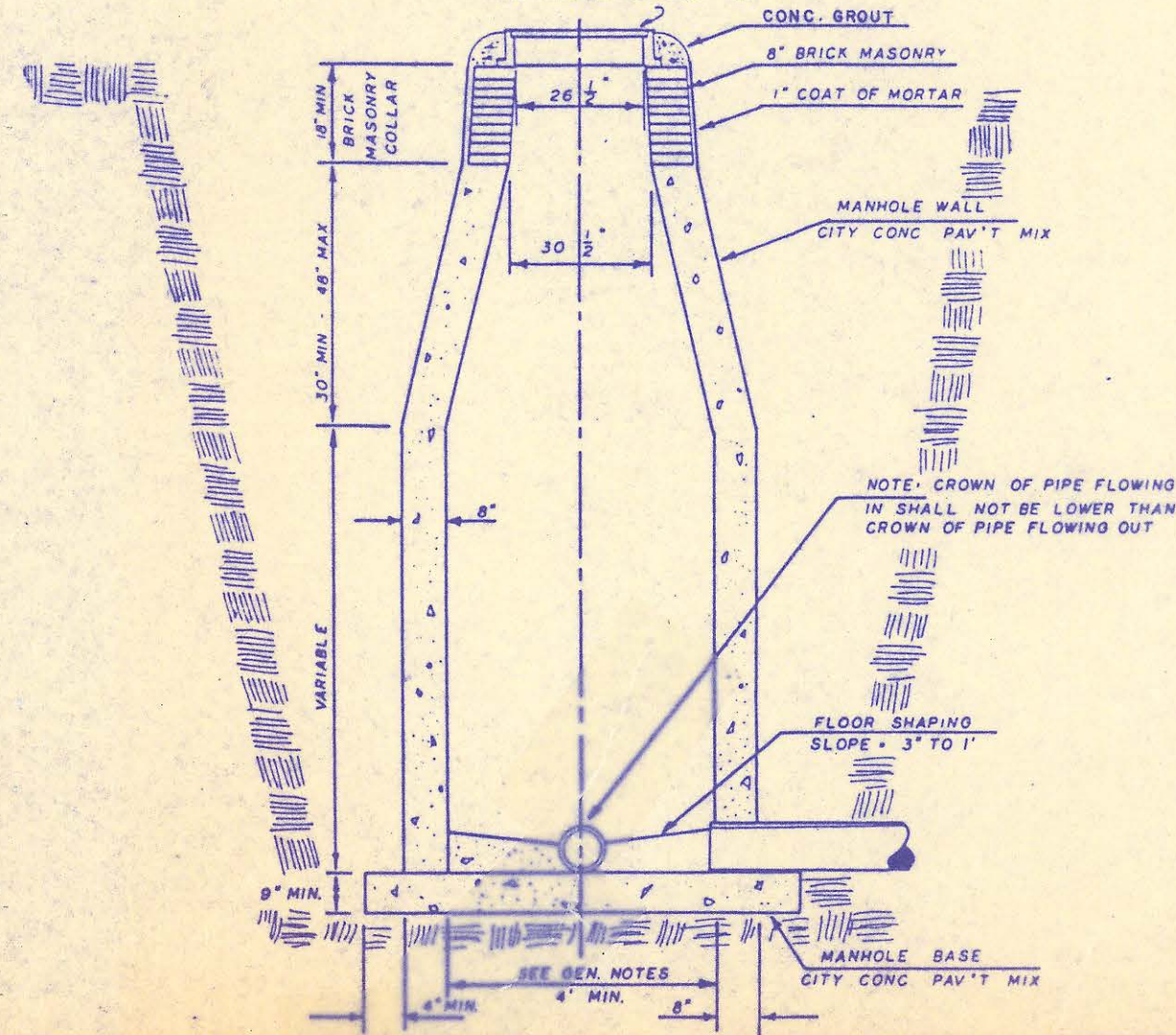


REINFORCED CONCRETE ENCASEMENT For Strength

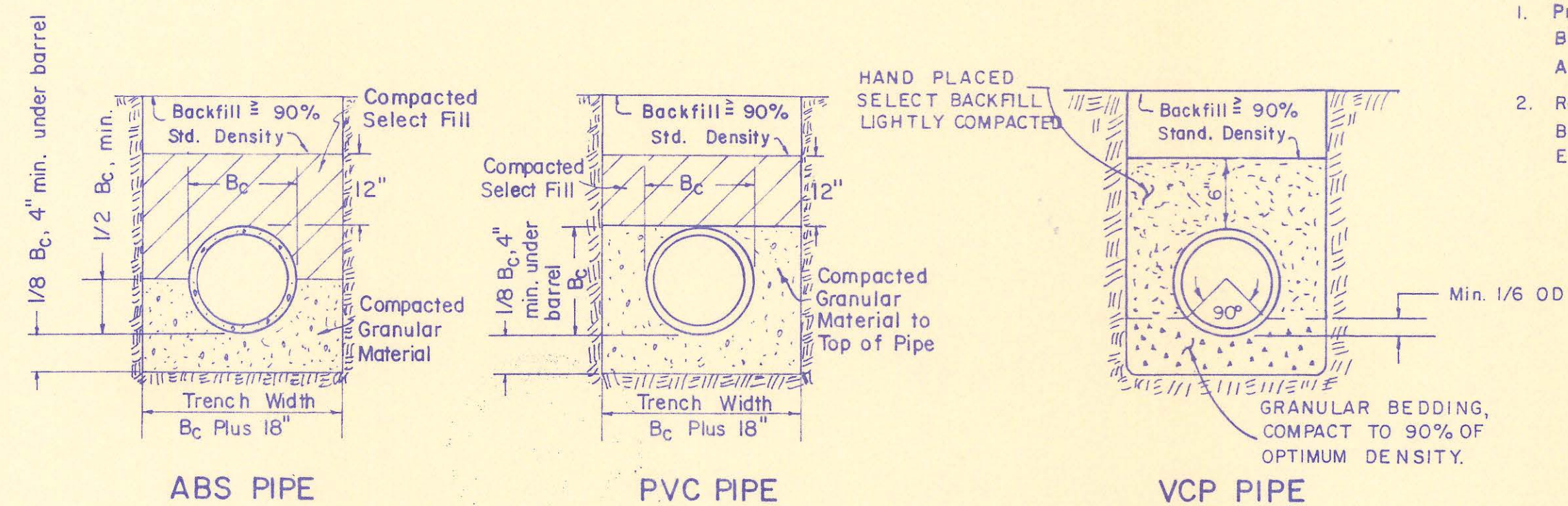
NOTE: All concrete to be Class 3, For Encasements and Manholes

- Notes -
1. Provide Concrete Support Under All Pipes Between Exterior Wall of All Manholes And Undisturbed Trench Foundation.
  2. Reinforcing Steel Shall Be Provided In All Manhole Bases. Reinforcing Shall Be No. 4 on 6" Ctrs., Each Way, Placed 6" Above The Bottom Of The Base.

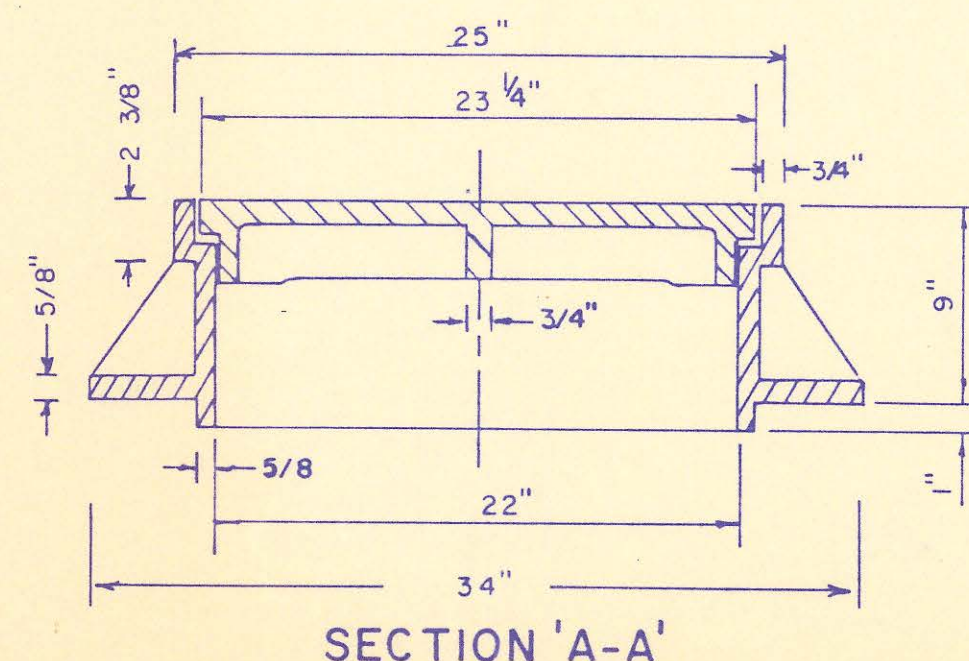
STANDARD MANHOLE TYPE "C"



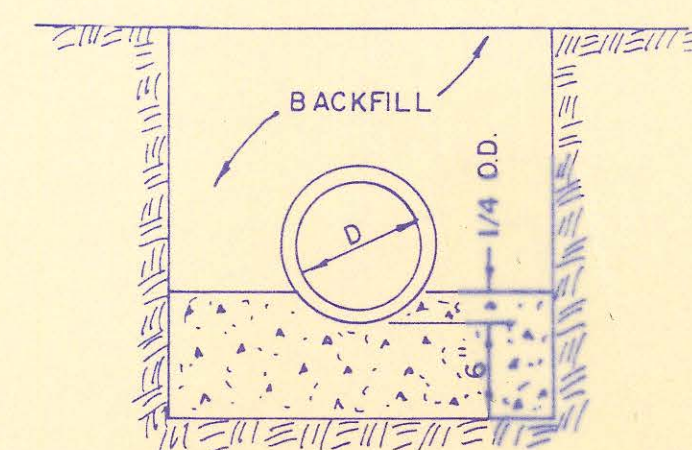
CLEAN OUT DETAIL



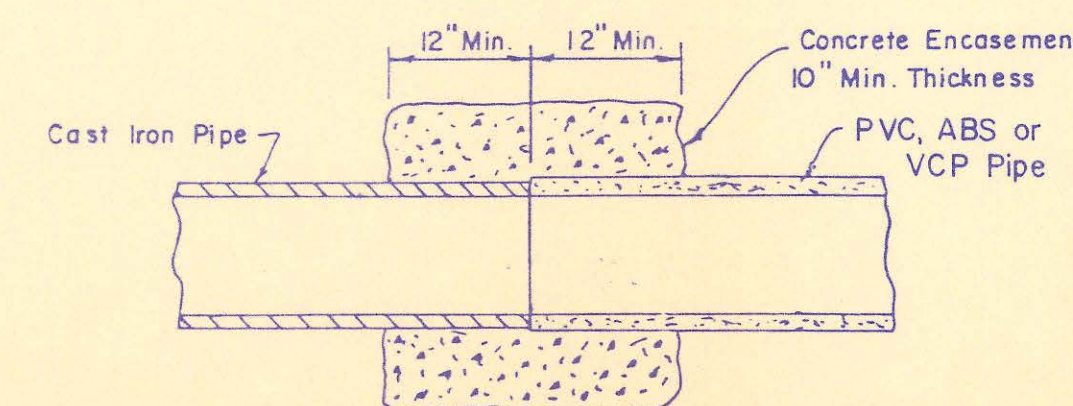
STANDARD BEDDING METHODS



SECTION "A-A"



CONCRETE CRADLE



JOINT DETAIL C.I.P. TO A.B.S., P.V.C. OR V.C.P. PIPE

AS CONSTRUCTED  
DISP. *[Signature]* DATE 12-27-91  
BY *[Signature]*

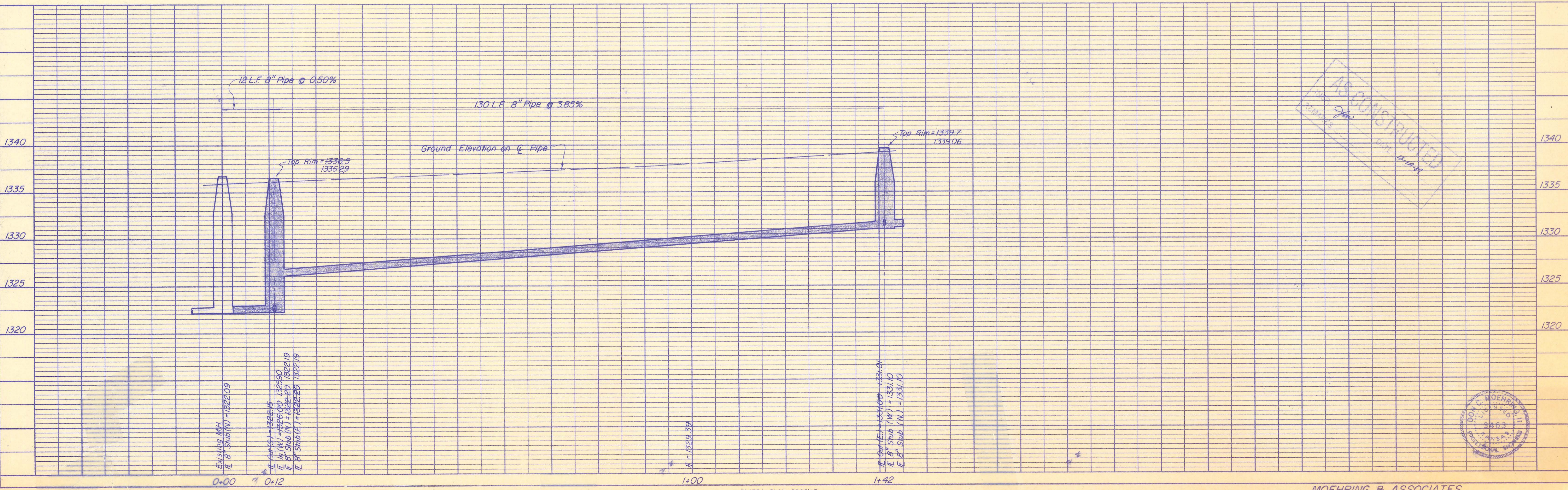
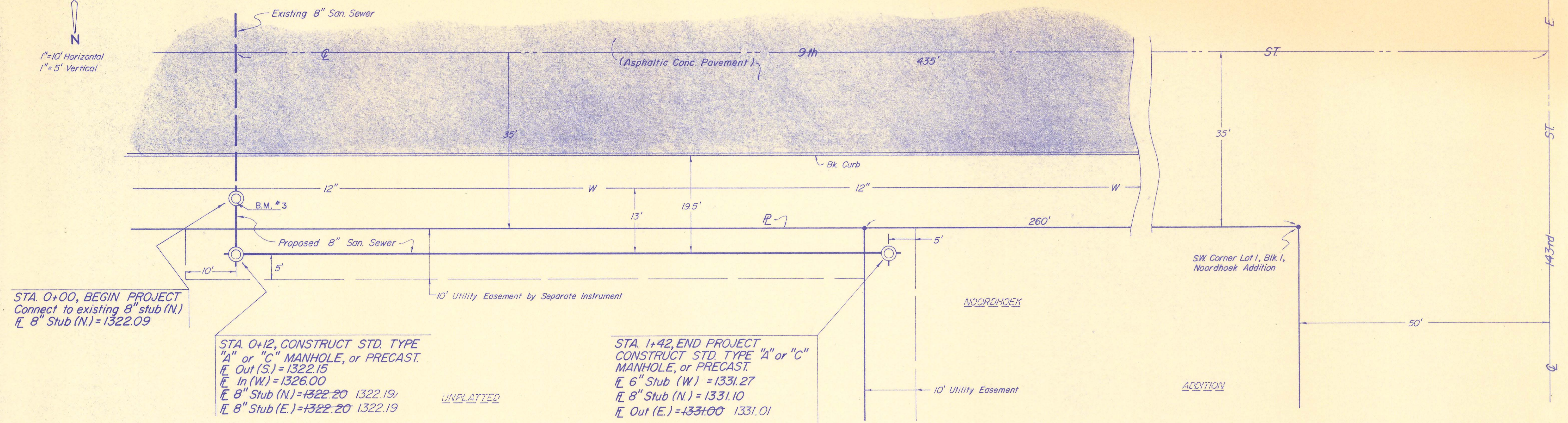
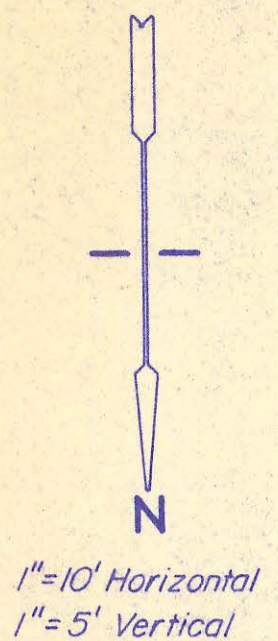


DETAILS OF SEWER APPURTENANCES

NOORDHOEK ADD'N.  
MOEHRING & ASSOCIATES  
CONSULTING ENGINEERS

PLAN	SURVEYED	DATE
	PLOTTED	BY
	NOTED	BY
	CHECKED	BY
	RT. OF WAY CHECKED	BY
	NO.	

PROFILE	SURVEYED	DATE
	PLOTTED	BY
	NOTED	BY
	CHECKED	BY
	STRUCTURE NOTATIONS CHK'D	BY
	NO.	



AS CONSTRUCTED  
DATE 11-14-41

