

PLANS FOR

4MC-084

PHASE I

SANITARY SEWER EXTENSION

CRESTVIEW COUNTRY CLUB ESTATES

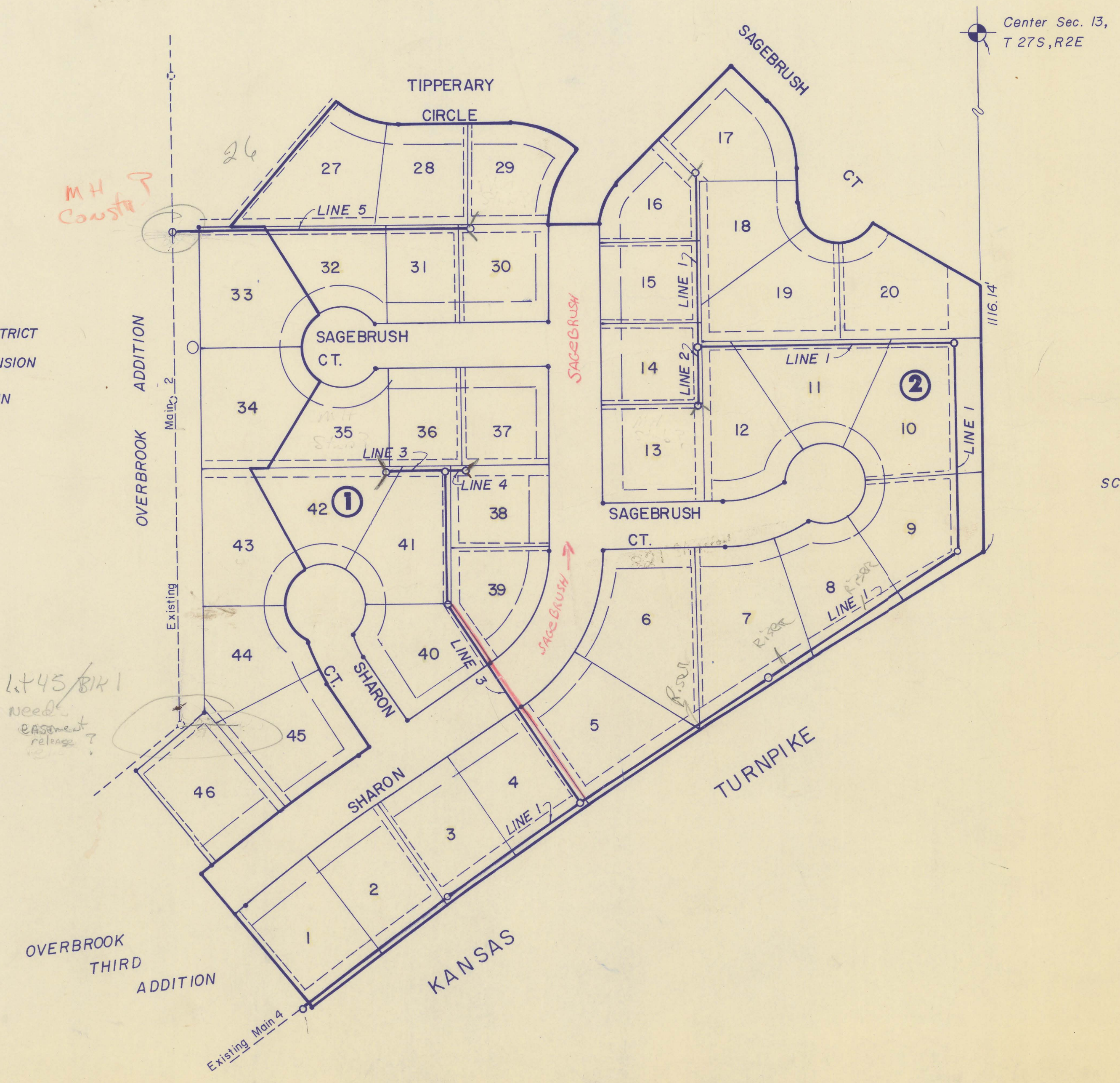
OVERBROOK SECOND ADDITION

SEDGWICK COUNTY, KANSAS

JAN. 1983

LEGEND

	BENEFIT DISTRICT
	MAIN EXTENSION
	EXISTING MAIN



INDEX TO DRAWINGS

SHEET NO.	DESCRIPTION
1	TITLE SHEET
2	LINE 1
3	LINE 1 and LINE 2
4	LINE 3 and LINE 4
5	PLAT
6-7	MANHOLE DETAILS
8	VERT. RISER DETAIL

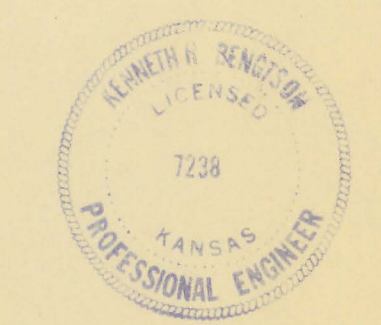
Bench Mark #
Step spike in N.E. face of 50" Hedge Tree near the N.W. corner of Lot 34, Block 1, Overbrook Second Addition
ELEVATION = 1337.66'

Bench Mark #
Top of 3" pipe 6' N.W. from the S.E. corner of Overbrook Second Addition
ELEVATION = 1332.29'

Bench Mark #
E. rim of existing manhole on S.E. corner of Lot 8, Block 4, Overbrook Addition
ELEVATION = 1327.67'

Bench Mark #
Chiseled Square on W. edge of E. inlet on the N.E. corner of Sharon Lane & Sandpiper
ELEVATION = 1328.14'

4MC-084

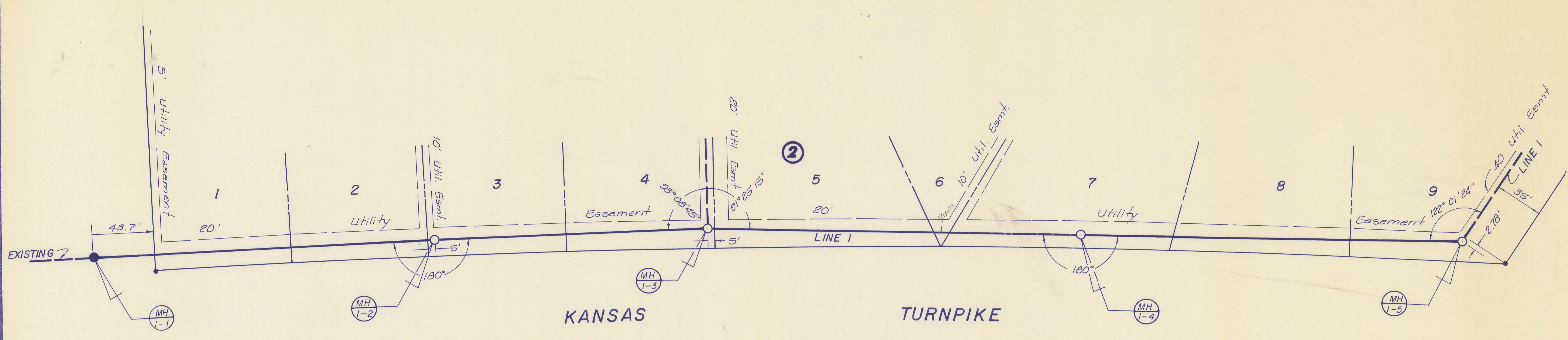


OVERBROOK SECOND ADD.

MID-KANSAS ENGINEERING CONSULTANTS PA
682-6561

240 N. ROCK ROAD SUITE 130
WICHITA, KANSAS 67206

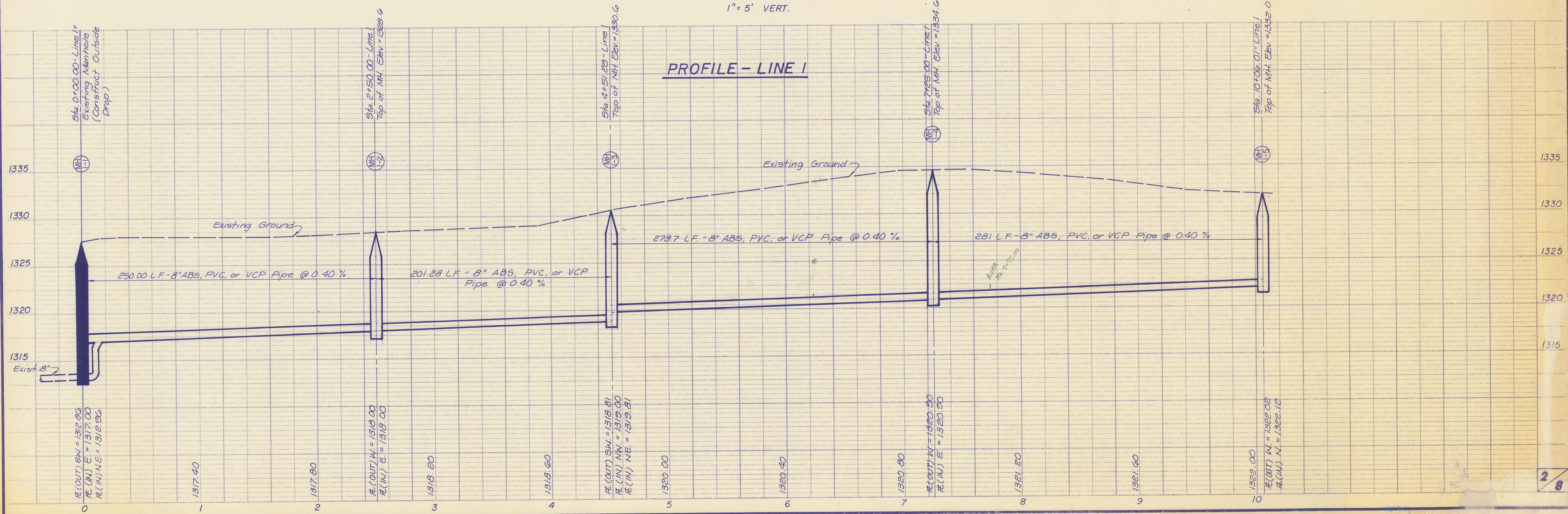
1/8

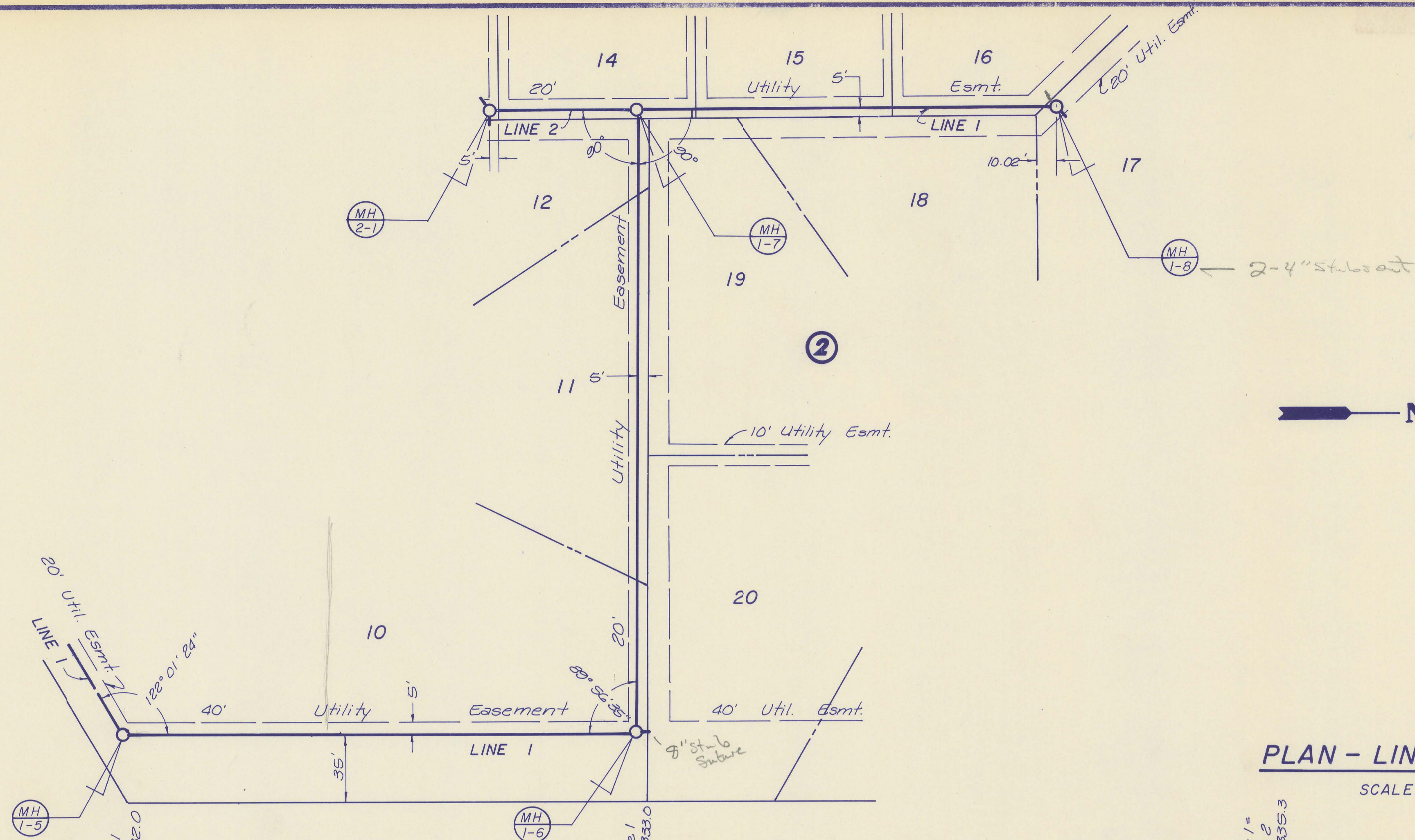


PLAN - LINE 1

SCALE : 1" = 40' HORZ.
1" = 5' VERT.

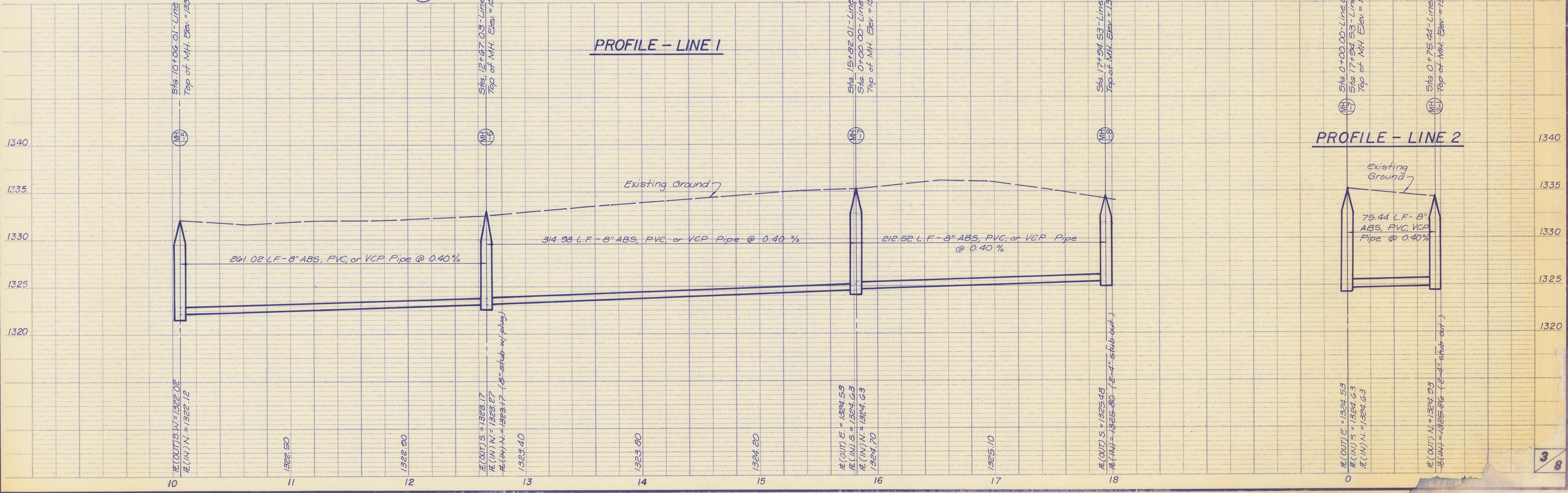
PROFILE - LINE 1





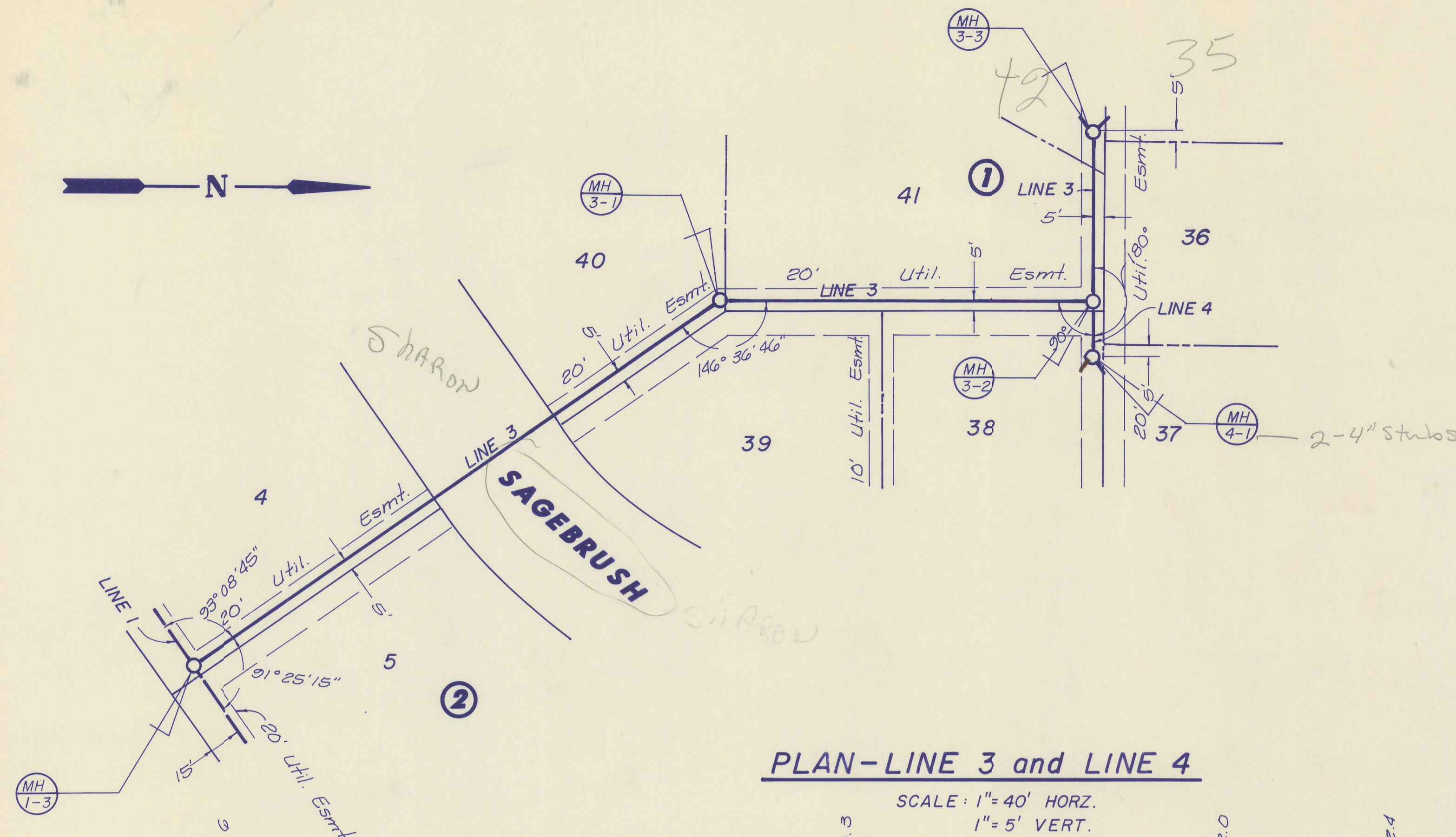
PLAN - LINE 1 and LINE 2

SCALE: 1" = 40' HORZ.
1" = 5' VERT.



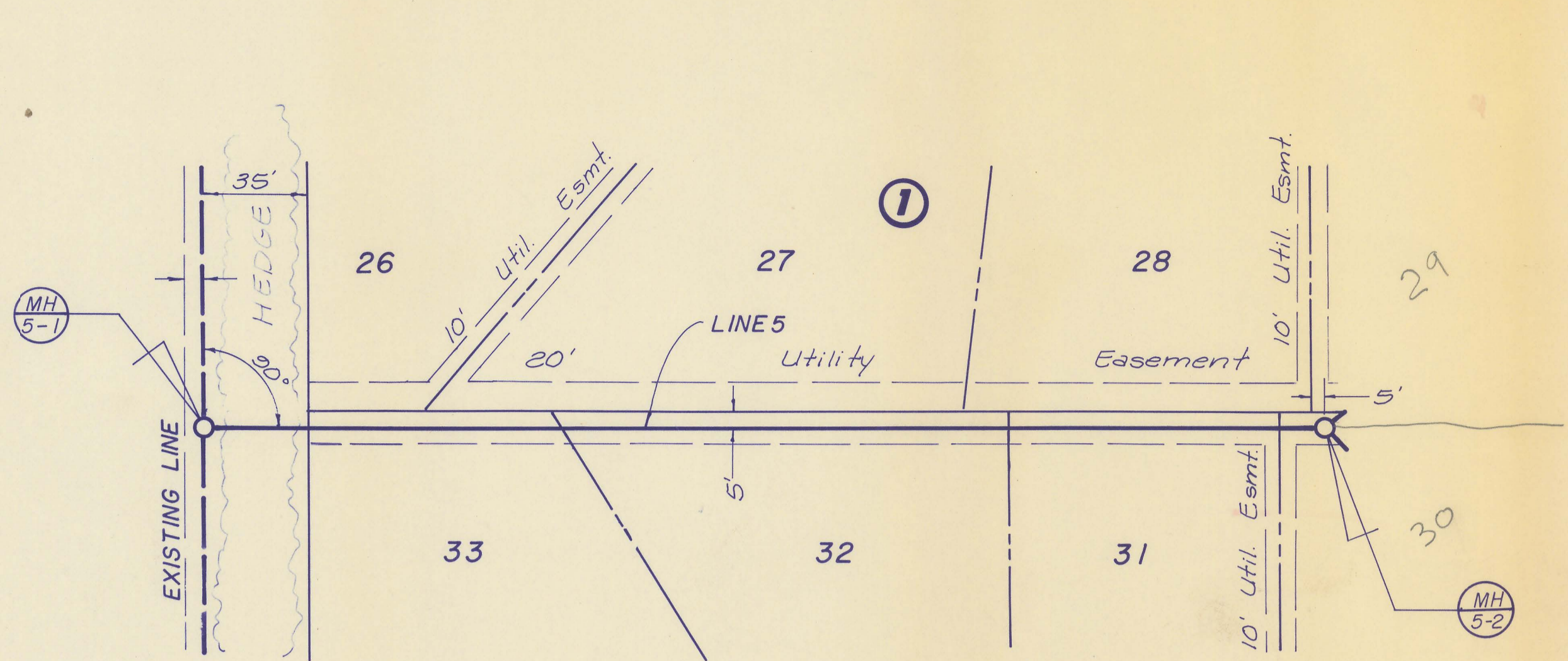
PROFILE - LINE 1

PROFILE - LINE 2



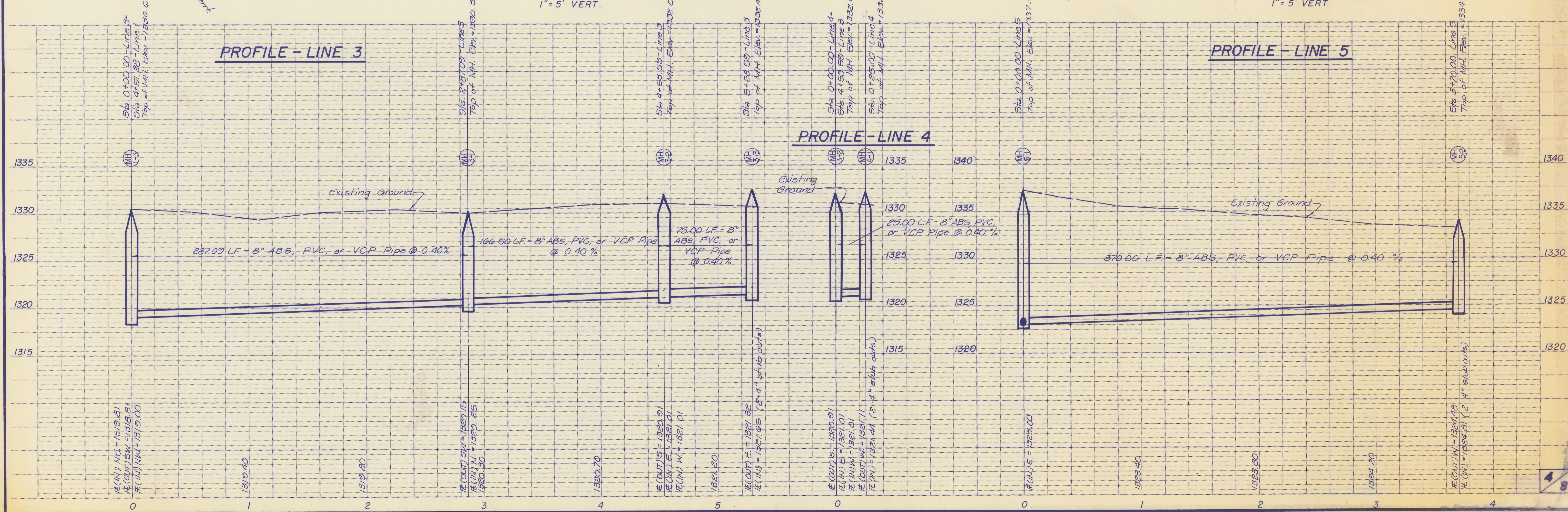
PLAN-LINE 3 and LINE 4

SCALE: 1" = 40' HORZ.
1" = 5' VERT.



PLAN-LINE 5

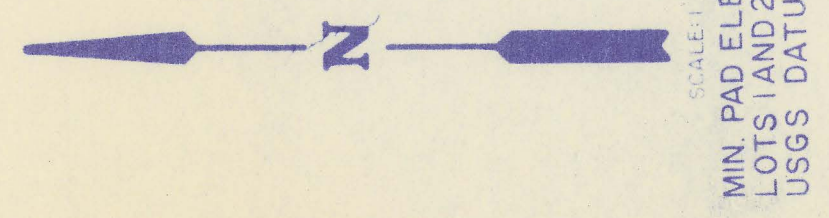
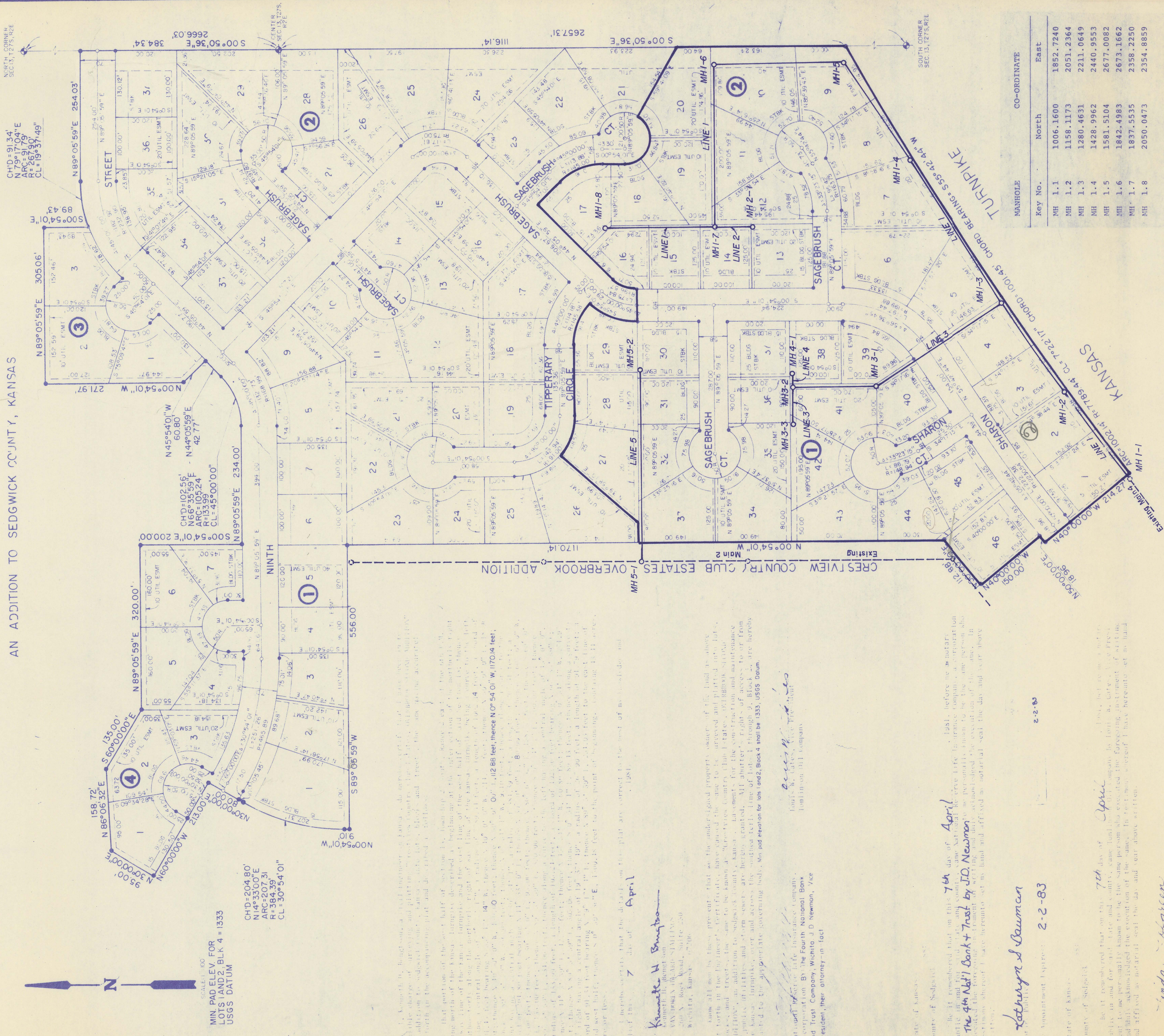
SCALE: 1" = 40' HORZ.
1" = 5' VERT.



FINAL PLAT OF
CRESTVIEW COUNTRY CLUB ESTATES

OVERBROOK SECOND ADDITION

AN ADDITION TO SEDGWICK COUNTY, KANSAS



MIN. PAD ELEV. FOR
LOTS 1 AND 2, BLK. 4 = 1333
USGS DATUM

CHD=204.80'
N 14° 33' 00" E
ARC=207.31'
R=384.39'
CL=30° 54' 01"

CHD=102.56'
N 66° 35' 59" E
ARC=103.24'
R=42.77'
CL=15° 00' 00"

CHD=91.34'
N 79° 17' 04" E
ARC=91.79'
R=59.37'
CL=19° 31' 49"

I hereby certify that the plat was corrected to the most of my knowledge and belief this 7 day of April, 1981.

Kenneth H. Bampton
Notary Public for Sedgewick County, Kansas
200 S. Rock Road, Suite 200
Wichita, Kansas 67202

I, the undersigned, hereby certify that the plat was corrected to the most of my knowledge and belief this 7 day of April, 1981.

Robert C. Brown
Notary Public for Sedgewick County, Kansas
200 S. Rock Road, Suite 200
Wichita, Kansas 67202

I, the undersigned, hereby certify that the plat was corrected to the most of my knowledge and belief this 7 day of April, 1981.

Robert C. Brown
Notary Public for Sedgewick County, Kansas
200 S. Rock Road, Suite 200
Wichita, Kansas 67202

I, the undersigned, hereby certify that the plat was corrected to the most of my knowledge and belief this 7 day of April, 1981.

Robert C. Brown
Notary Public for Sedgewick County, Kansas
200 S. Rock Road, Suite 200
Wichita, Kansas 67202

I, the undersigned, hereby certify that the plat was corrected to the most of my knowledge and belief this 7 day of April, 1981.

Robert C. Brown
Notary Public for Sedgewick County, Kansas
200 S. Rock Road, Suite 200
Wichita, Kansas 67202

I, the undersigned, hereby certify that the plat was corrected to the most of my knowledge and belief this 7 day of April, 1981.

Robert C. Brown
Notary Public for Sedgewick County, Kansas
200 S. Rock Road, Suite 200
Wichita, Kansas 67202

I, the undersigned, hereby certify that the plat was corrected to the most of my knowledge and belief this 7 day of April, 1981.

Robert C. Brown
Notary Public for Sedgewick County, Kansas
200 S. Rock Road, Suite 200
Wichita, Kansas 67202

I, the undersigned, hereby certify that the plat was corrected to the most of my knowledge and belief this 7 day of April, 1981.

Robert C. Brown
Notary Public for Sedgewick County, Kansas
200 S. Rock Road, Suite 200
Wichita, Kansas 67202

I, the undersigned, hereby certify that the plat was corrected to the most of my knowledge and belief this 7 day of April, 1981.

Robert C. Brown
Notary Public for Sedgewick County, Kansas
200 S. Rock Road, Suite 200
Wichita, Kansas 67202

I, the undersigned, hereby certify that the plat was corrected to the most of my knowledge and belief this 7 day of April, 1981.

Robert C. Brown
Notary Public for Sedgewick County, Kansas
200 S. Rock Road, Suite 200
Wichita, Kansas 67202

I, the undersigned, hereby certify that the plat was corrected to the most of my knowledge and belief this 7 day of April, 1981.

Robert C. Brown
Notary Public for Sedgewick County, Kansas
200 S. Rock Road, Suite 200
Wichita, Kansas 67202

I, the undersigned, hereby certify that the plat was corrected to the most of my knowledge and belief this 7 day of April, 1981.

Robert C. Brown
Notary Public for Sedgewick County, Kansas
200 S. Rock Road, Suite 200
Wichita, Kansas 67202

I, the undersigned, hereby certify that the plat was corrected to the most of my knowledge and belief this 7 day of April, 1981.

Robert C. Brown
Notary Public for Sedgewick County, Kansas
200 S. Rock Road, Suite 200
Wichita, Kansas 67202

MANHOLE	Key No.	North	East	CO-ORDINATE
MH 1.1	1006.1600	1852.7240		
MH 1.2	1158.1173	2051.2364		
MH 1.3	1280.4631	2211.0649		
MH 1.4	1428.9962	2440.9553		
MH 1.5	1581.5104	2677.0082		
MH 1.6	1842.4983	2673.1662		
MH 1.7	1837.5535	2358.2250		
MH 1.8	2050.0473	2354.8859		
MH 2.1	1762.1228	2359.4104		
MH 3.1	1517.6594	2049.3347		
MH 3.2	1684.1397	2046.7186		
MH 3.3	1682.9613	1971.7279		
MH 4.1	1684.5325	2071.7155		
MH 5.1	1976.8393	1707.0777		
MH 5.2	1982.6528	2077.0320		

#539780

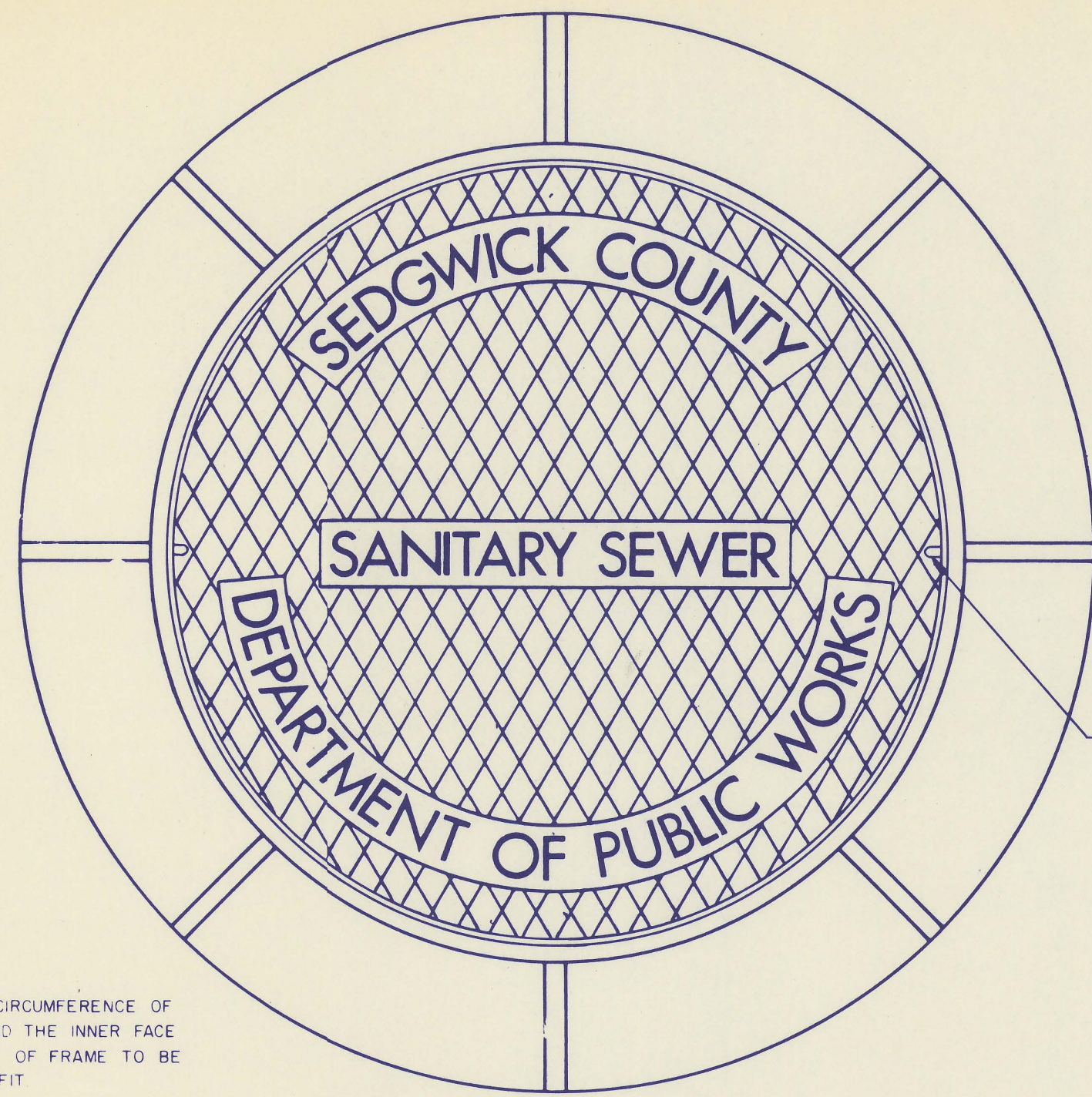
Joseph E. Fragy
Chairman

Lesley K. White
Secretary

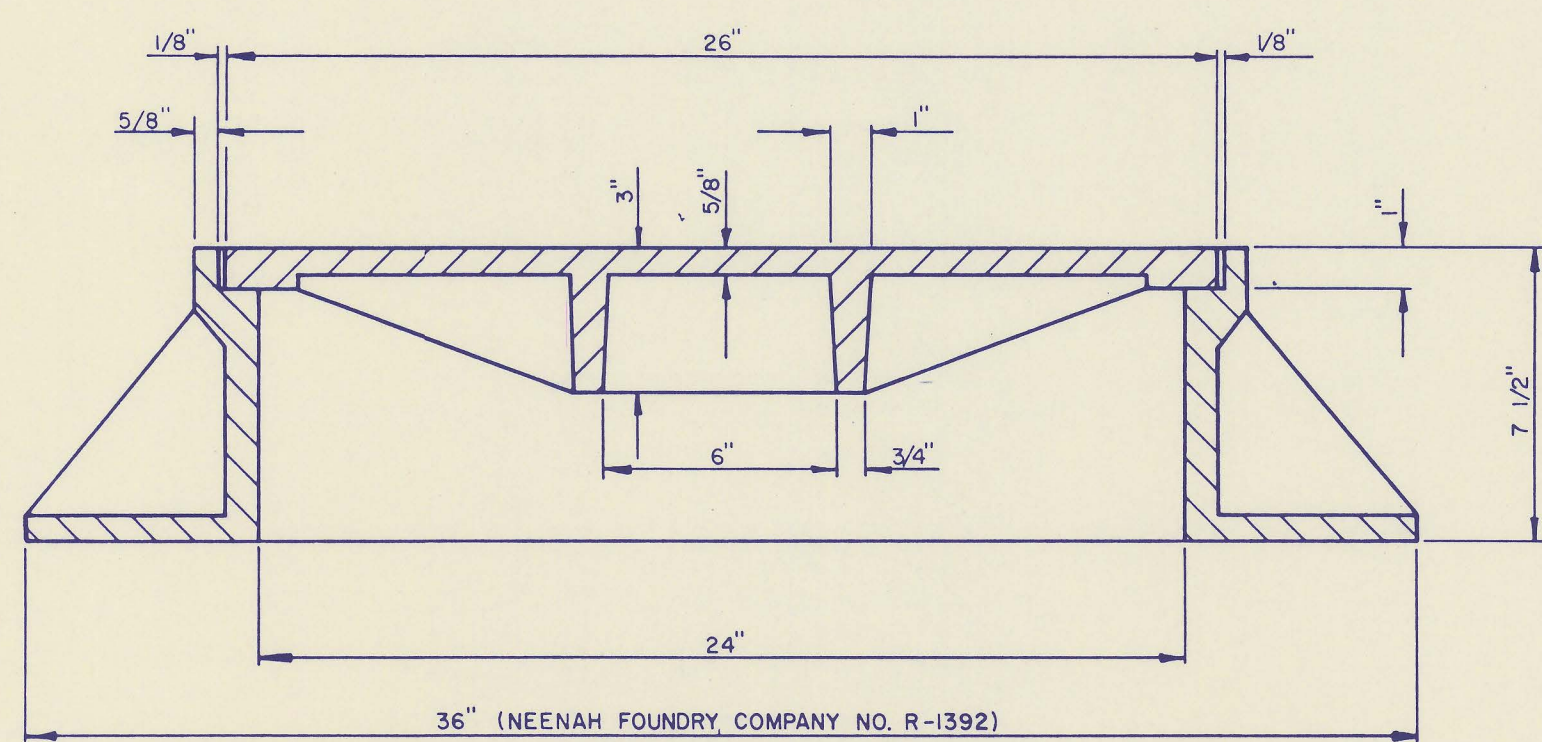
Lesley K. White
Secretary

Robert A. M. Katz
Register of Deeds

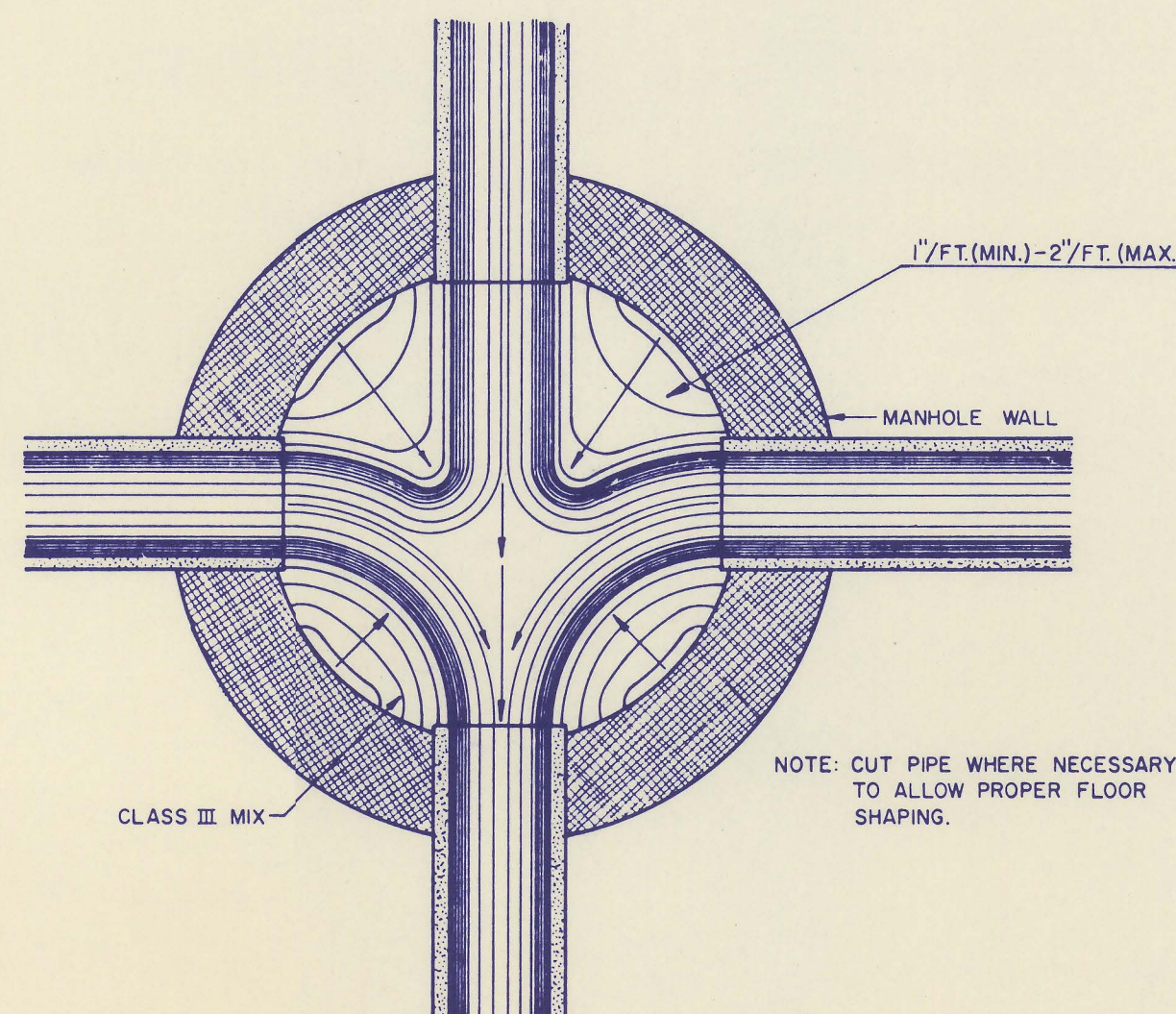
Pat J. O'Connell
Deputy



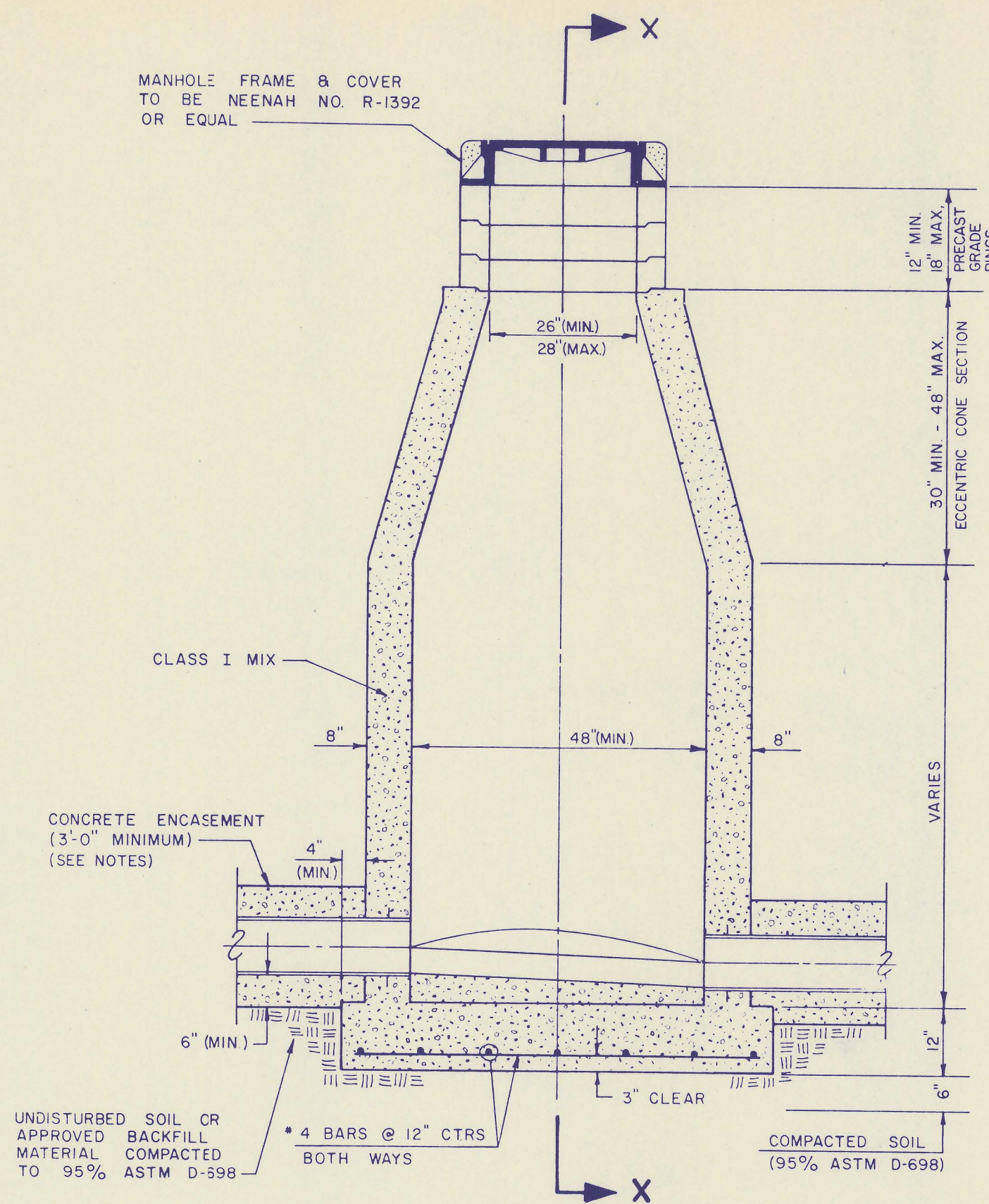
OUTSIDE CIRCUMFERENCE OF COVER AND THE INNER FACE AND SEAT OF FRAME TO BE MACHINE FIT



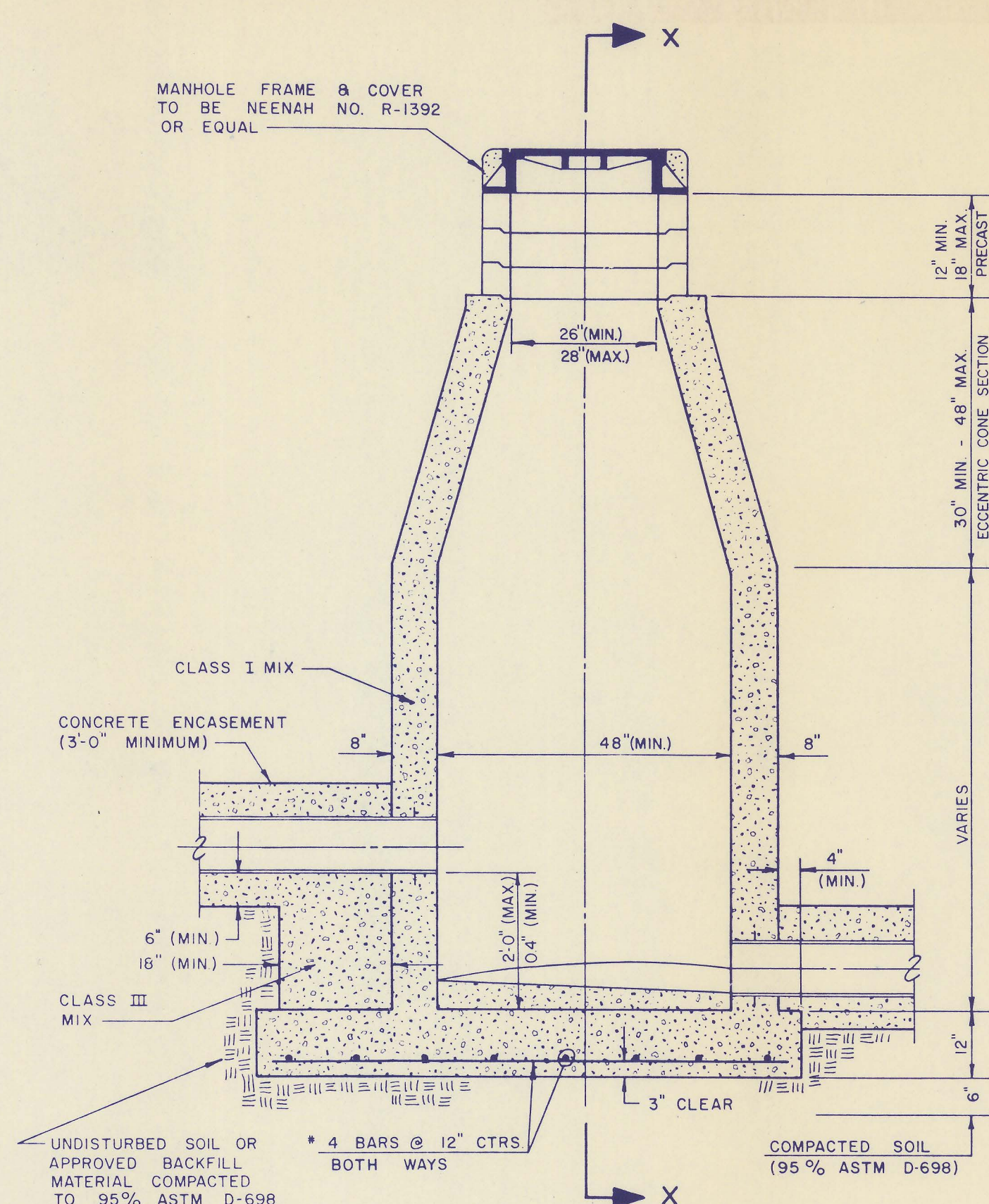
MANHOLE FRAME AND COVER
(TOTAL WEIGHT = 410 LBS.)



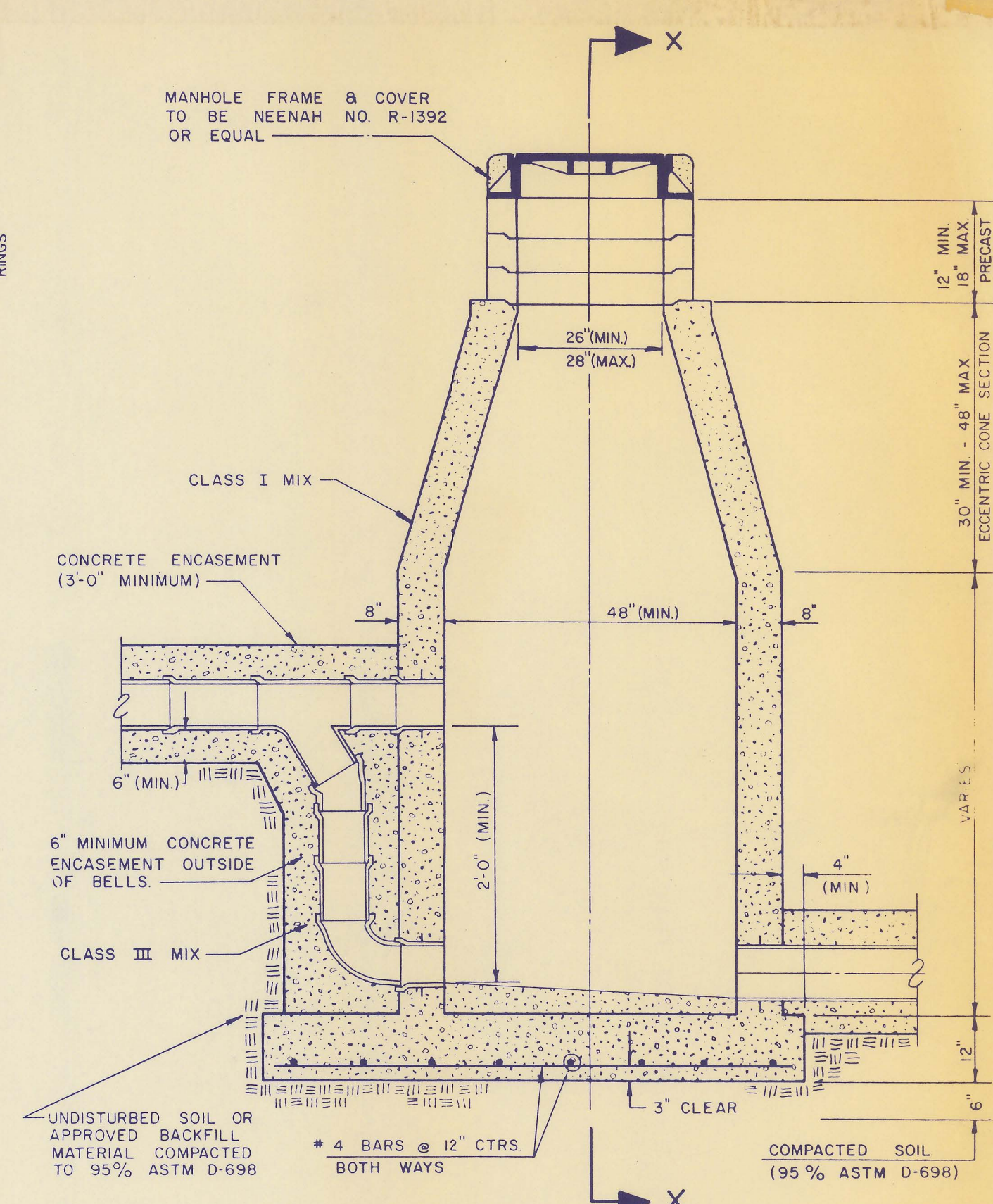
TYPICAL MANHOLE FLOOR SHAPING



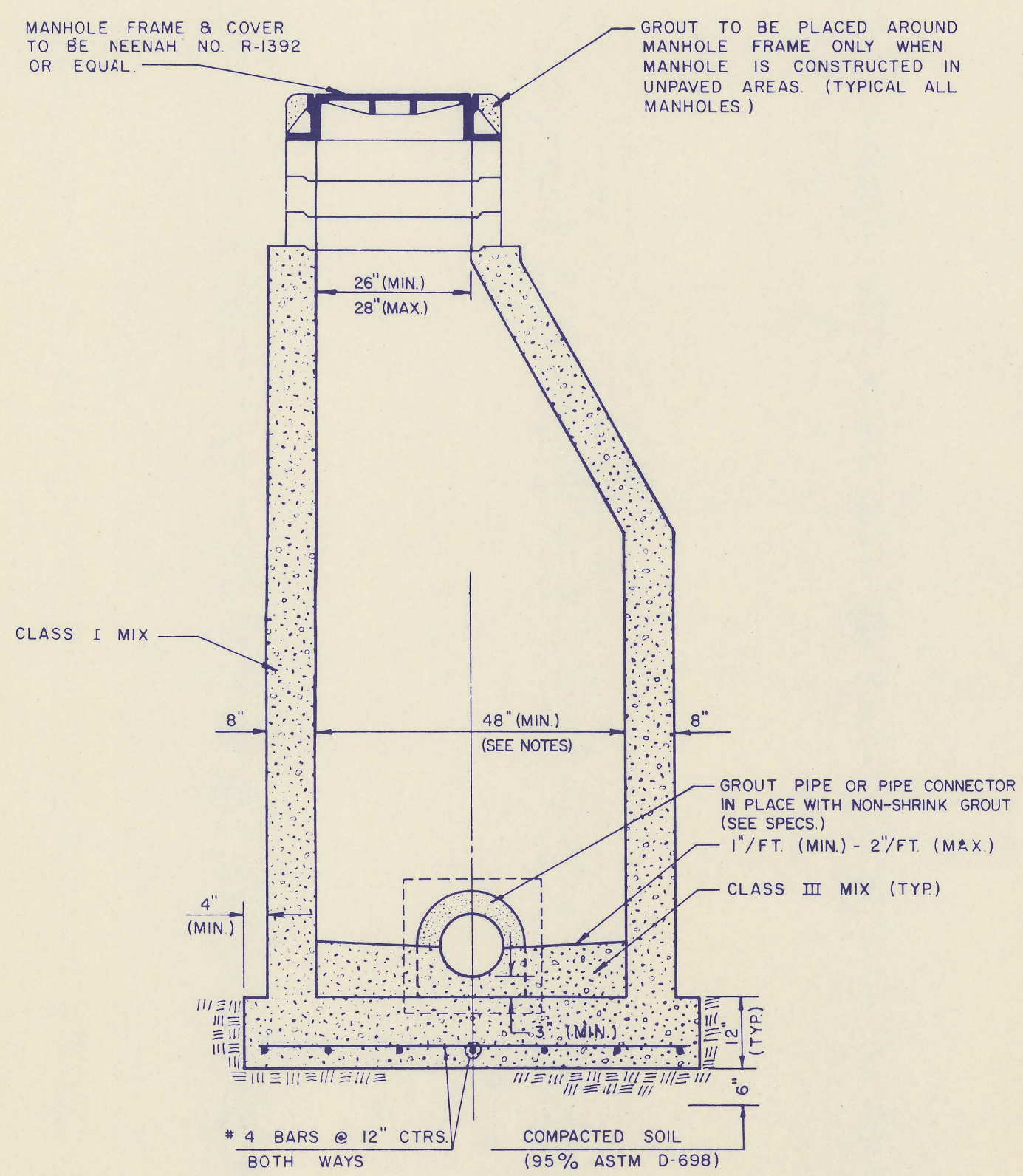
CAST IN PLACE STANDARD MANHOLE TYPE "A"



CAST IN PLACE DROP MANHOLE TYPE "B"



CAST IN PLACE OUTSIDE DROP MANHOLE TYPE "C"



SECTION X (TYPICAL)

MANHOLE NOTES

- If, in the opinion of the Engineer, the manhole subgrade appears unstable, the contractor will have the option to compact subgrade as shown or increase the thickness of the manhole base as directed by the Engineer.
- Steel reinforcing will be required in all manhole bases.
- When openings are cut in manhole walls for pipe, the pipe or pipe connector shall be grouted in place with non-shrinking grout. Exterior of completed connection shall be sealed with approved coatings.
- Cast-In-Place circular concrete manholes are to be constructed only in locations where it is obvious that any adjustment of the manhole top elevations which may be necessary will not require modification of the concrete barrel.
- Approved flexible waterstop gaskets which meet or exceed the test requirements of ASTM C-923 shall be installed to join the sewer to the manhole wall when ABS composite pipe or PVC pipe is used. For other types of pipe the sewer extending from manholes shall be supported with concrete encasement a minimum of 3 feet from the manhole wall.
- Pipe plugs shall be provided by pipe supplier when available.
- Concrete for manhole bases shall be Class I as described in the specifications.
- Manholes with pipe sizes larger than 15" shall have 5' inside diameter.

MANHOLE FRAME AND COVER NOTES

- Cast iron manhole frame and cover shall conform to ASTM A-48, Class 30.
- The frames and covers shall be of a nonrocking type or with machined bearing surfaces so fitting parts will not rattle or rock under traffic.
- Manhole castings shall be NEENAH Foundry R-1392 or equal unless otherwise specified in the special conditions. (Minimum wt. - 410 lbs.) All manhole castings, regardless of type, shall be considered subsidiary to the unit prices bid for the various manhole types.
- Grind all burrs smooth, clean thoroughly, then apply shop coat of asphalt base paint.
- Manhole covers shall have a checkered design with the pattern blocked out for raised lettering as shown in the detail drawing.
- The manufacturer shall submit shop drawings to the engineer for approval prior to manufacture. The engineer shall retain the right to reject castings not conforming to the specifications or the approved shop drawings.
- Wherever self-sealing manhole lids are indicated on the plans, the contractor shall supply and install a NEENAH No. R-1392, or approved equal, type frame with self-sealing lid and concealed pickholes. The contractor shall supply to the owner one (1) replacement gasket for each self-sealing lid.

	CAST IN PLACE	Design
	MANHOLE DETAIL	Drawn By Checked By Date Job No.

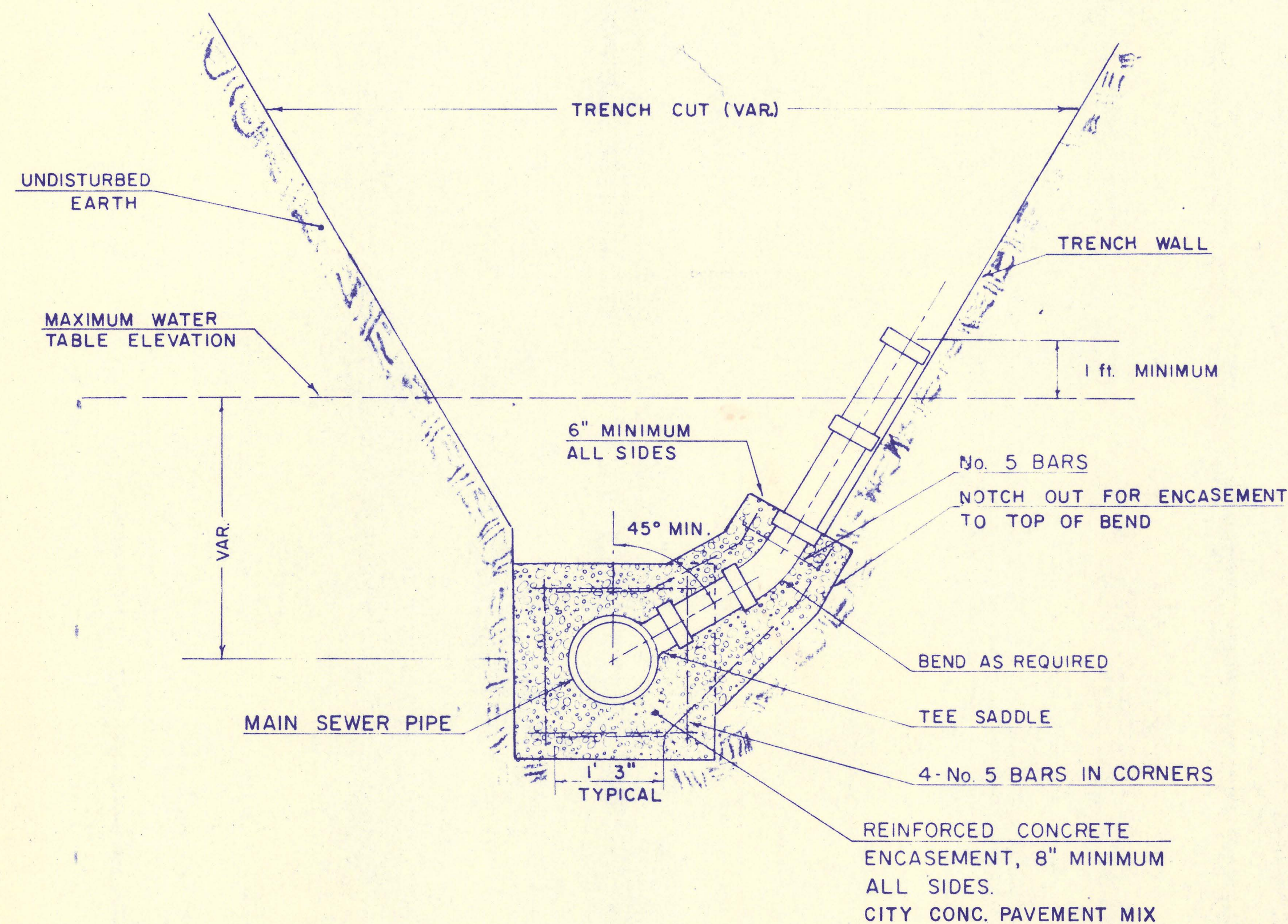
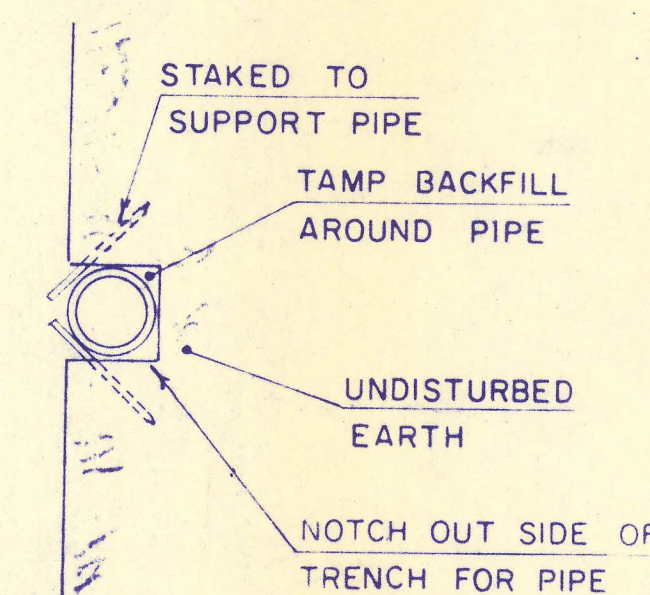
MID-KANSAS ENGINEERING CONSULTANTS PA
682-6561
240N. ROCK ROAD SUITE 130
WICHITA, KANSAS

Sheet
6
of
8

VERTICAL RISER DETAIL

GENERAL NOTE

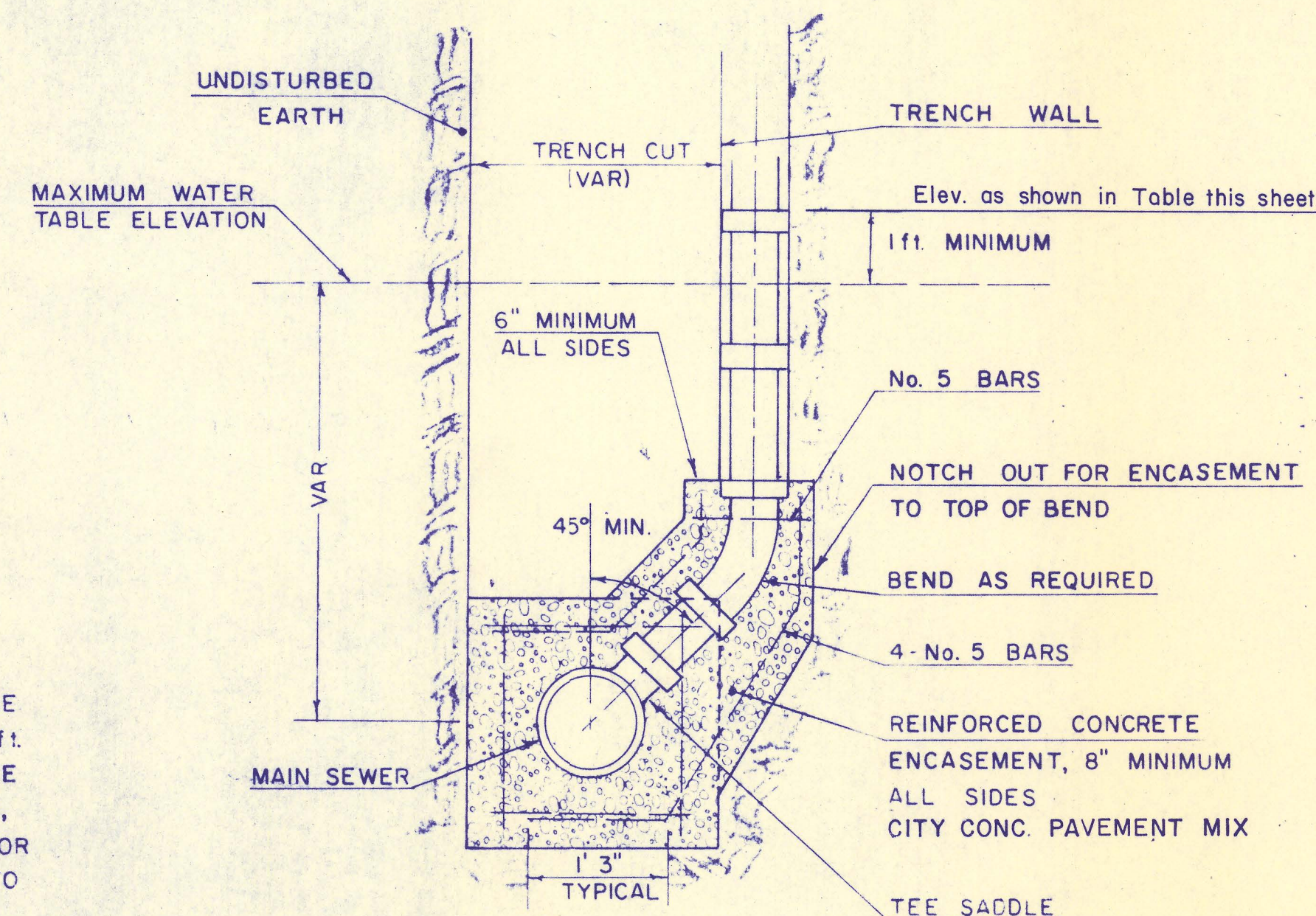
RISERS SHALL BE INSTALLED TO SERVE ALL LOTS OR TRACTS WHEN THE MAIN SEWER LINE IS BELOW THE WATER TABLE. RISERS SHALL ALSO BE INSTALLED TO SERVE ALL LOTS AND TRACTS WHEN THE MAIN SEWER LINE DEPTH IS SUCH THAT WOULD MAKE THE BUILDING SEWER LINE CONNECTION DIFFICULT. INSTALLATION OF RISERS BECAUSE OF MAIN LINE SEWER DEPTH SHALL BE AS APPROVED BY THE ENGINEER. THE LOCATION OF RISERS TO SERVE DEVELOPED PROPERTY SHALL BE APPROVED BY THE PROPERTY OWNER. PIPE STUBS SHALL BE INSTALLED IN MANHOLES WHERE LOCATIONS OF MANHOLES WILL PROVIDE SATISFACTORY SERVICE CONNECTIONS AS DETERMINED BY THE FIELD ENGINEER. THE VERTICAL DISTANCE BETWEEN THE FLOW LINE OF THE MANHOLE PIPE STUB AND THE FLOW LINE OF THE MAIN SEWER LINE SHALL NOT EXCEED 4 FT. MANHOLE PIPE STUBS SHALL NOT BE SET BELOW AN ELEVATION WHICH WILL PERMIT THE TOP OF THE INSIDE OF THE STUB TO MATCH THE TOP OF THE INSIDE OF THE MAIN SEWER PIPE. PIPE STUBS AND RISERS INSTALLED TO SERVE COMMERCIAL OR INDUSTRIAL PROPERTY SHALL BE 6 INCH. PIPE STUBS AND RISERS INSTALLED TO SERVE RESIDENTIAL PROPERTY MAY BE EITHER 6 INCH OR 4 INCH DEPENDING UPON THE AVAILABLE GRADE AND THE SIZE OF THE LOT AS DETERMINED BY THE FIELD ENGINEER. ENCASEMENT OF VERIFIED CLAY MAIN SEWER PIPE SHALL EXTEND TO THE FIRST JOINT IN THE MAIN SEWER CLAY PIPE ON EACH SIDE OF THE RISER INSTALLATION. ENCASEMENT OF A.B.S. COMPOSITE OR P.V.C. MAIN SEWER PIPE SHALL EXTEND A MINIMUM OF 3 FT. ON BOTH SIDES OF THE CENTERLINE OF THE RISER. FOUR INCH AND SIX INCH RISER PIPE SHALL BE ENCASED WITH CONCRETE TO THE TOP OF THE BEND AS INDICATED IN THE DRAWINGS. FOUR INCH AND SIX INCH CLAY PIPE USED FOR RISERS SHALL BE EXTRA STRENGTH PIPE CONFORMING TO THE REQUIREMENTS OF THE LATEST REVISION OF A.S.T.M. DESIGNATION C700 WITH COMPRESSION JOINTS AS SPECIFIED FOR CLAY PIPE IN THE STANDARD SPECIFICATIONS. FOUR INCH AND SIX INCH A.B.S. OR P.V.C. PIPE SHALL BE PIPE APPROVED FOR USE IN THE CITY BY THE CHIEF PLUMBING AND MECHANICAL INSPECTOR FOR THE CENTRAL INSPECTION DIVISION OF THE DEPARTMENT OF HOUSING AND ECONOMIC DEVELOPMENT. LOCATIONS OF THE ENDS OF THE RISERS SHALL BE MARKED BY FASTENING GREEN COLORED PLASTIC TAPE TO THE END OF THE RISER WHICH SHALL BE EXTENDED TO THE GROUND SURFACE AS THE EXCAVATION IS BACKFILLED SUCH THAT THE COLORED TAPE WILL BE VISIBLE WHEN THE PROJECT IS COMPLETED. THE ENDS OF THE RISER PIPE AND MANHOLE STUBS SHALL BE CAPPED OR PLUGGED USING FITTINGS FURNISHED BY THE MANUFACTURER OF THE PIPE. CONTRACTOR'S METHODS FOR SUPPLYING AND BACKFILLING RISER PIPE SHALL BE APPROVED BY THE ENGINEER.



TYPICAL RISER FOR SLOPING TRENCH WALLS

NOTE:
TOP OF 4" OR 6" RISER PIPE TO BE EXTENDED TO AN ELEVATION OF 1 ft. MINIMUM ABOVE THE WATER TABLE ELEVATION, WHEN WATER EXISTS, OR TO AN ELEVATION SUITABLE FOR PROVIDING SERVICE TO THE LOT TO BE SERVED AND THEN PLUGGED.

Line No.	VERTICAL RISER LOCATION		To Serve
	Station	Top of Riser Elevation	
1	6 + 22.21	1325.00	Lot 6, Blk. 2
1	7 + 75.00	1326.00	Lot 7, Blk. 2
1	8 + 55.00	1325.00	Lot 8, Blk. 2
5	0 + 50.00	1327.50	Lot 26, Blk. 1
5	1 + 00.00	1327.00	Lot 33, Blk. 1



TYPICAL RISER FOR VERTICAL TRENCH WALLS



VERTICAL RISER DETAIL

MID-KANSAS ENGINEERING CONSULTANTS PA
612-6561

240N. ROCK ROAD SUITE 130
WICHITA, KANSAS 67206