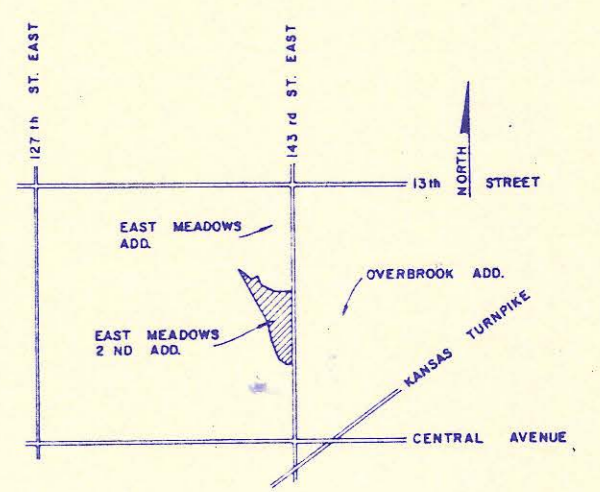
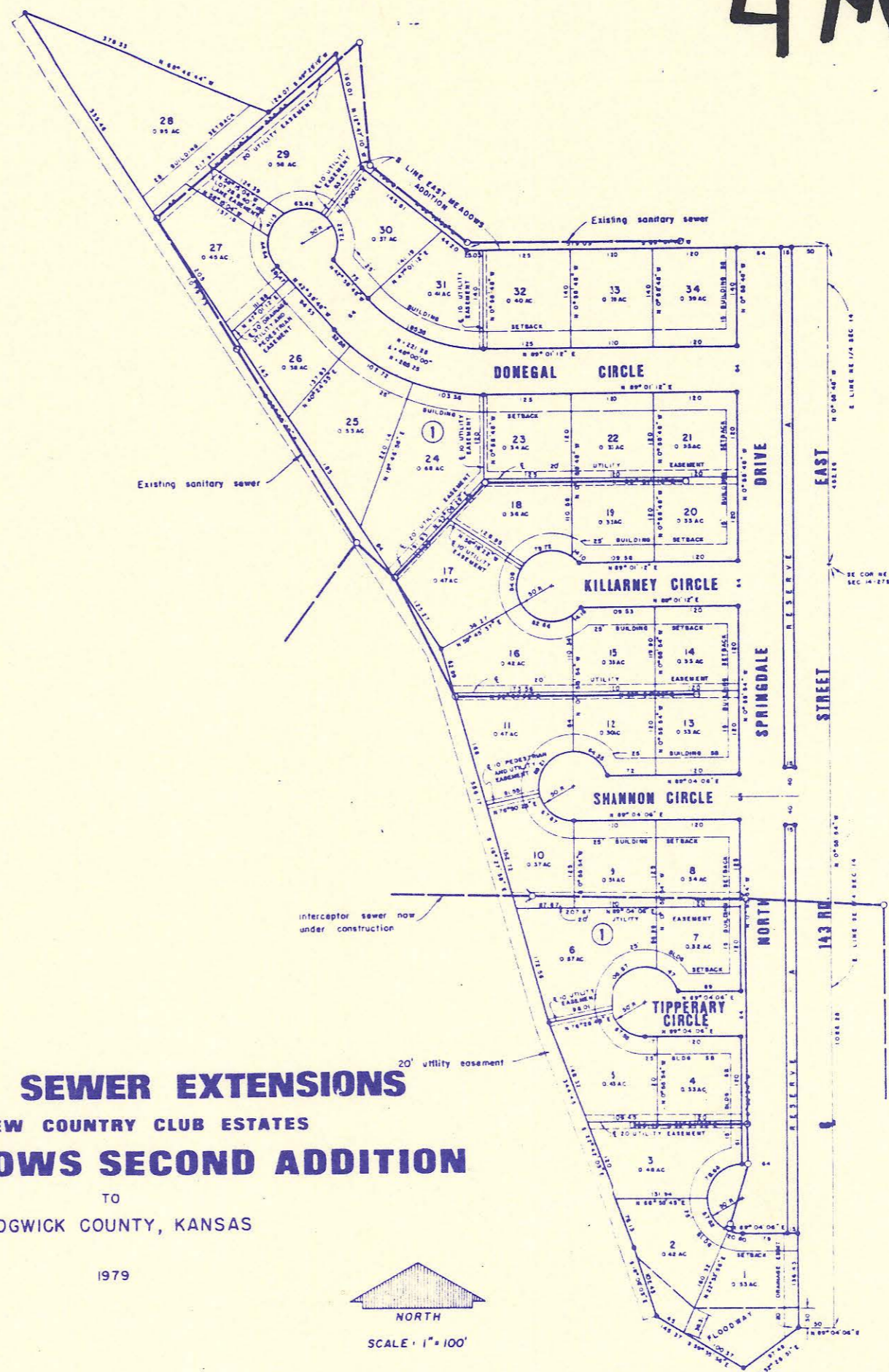


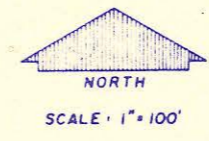
4MC-087



VICINITY MAP
SCALE 1"=2000'

SANITARY SEWER EXTENSIONS
CRESTVIEW COUNTRY CLUB ESTATES
EAST MEADOWS SECOND ADDITION
 TO
 SEDGWICK COUNTY, KANSAS

1979



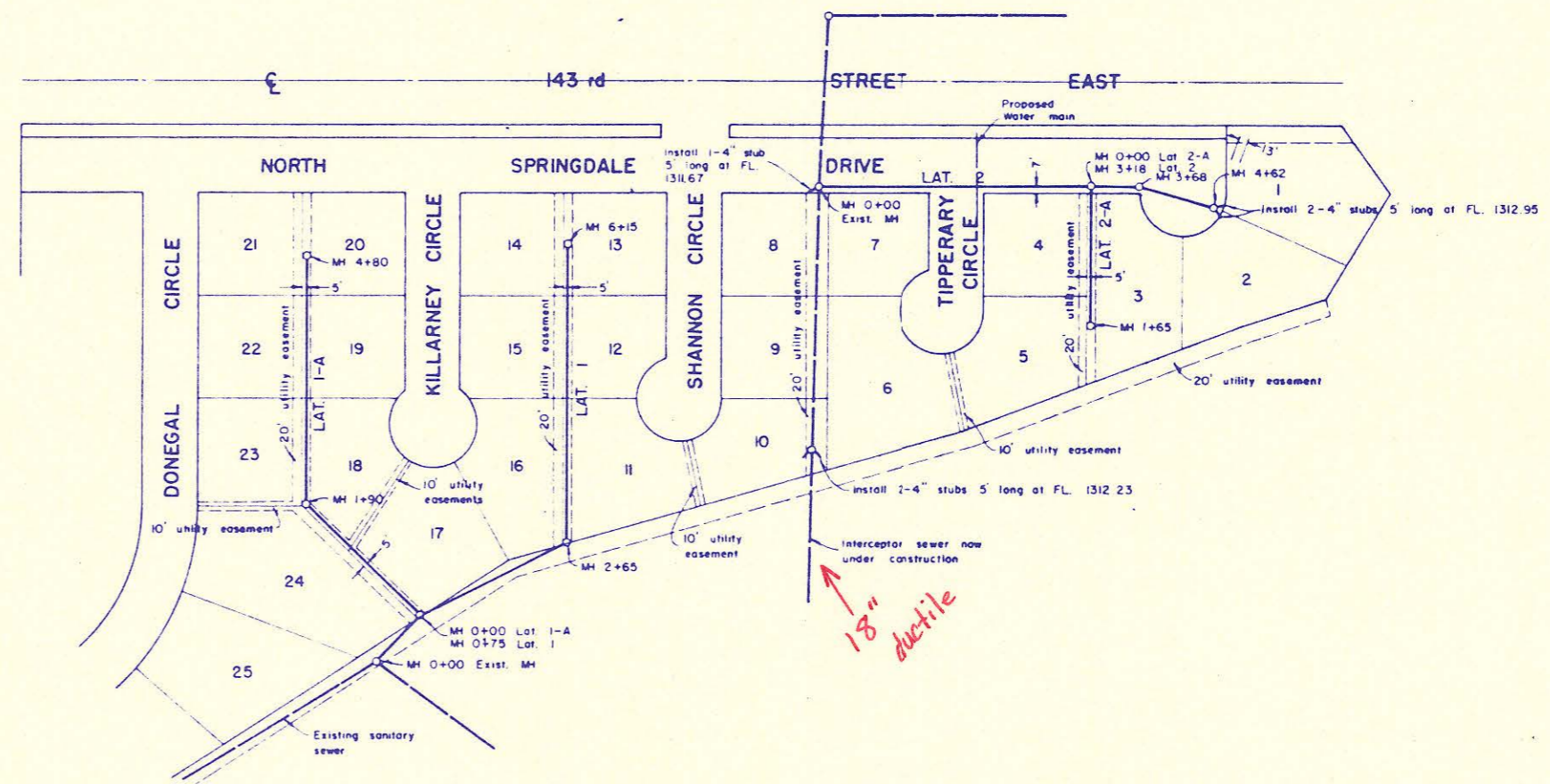
Reiss and Goodness Engineers

2100 WEST 21ST STREET WICHITA, KANSAS 67204

REISS & GOODNESS ENGINEERS
 2100 WEST 21ST STREET
 WICHITA, KANSAS 67204
 (913) 833-0323

REVISION	DRAWN BY	CHECKED BY	DESIGNED BY	PROJECT	CUSTOMER	SCALE	DATE	PROJECT NO.	SHEET / OF
						1"=100'	5-7-79	879	3

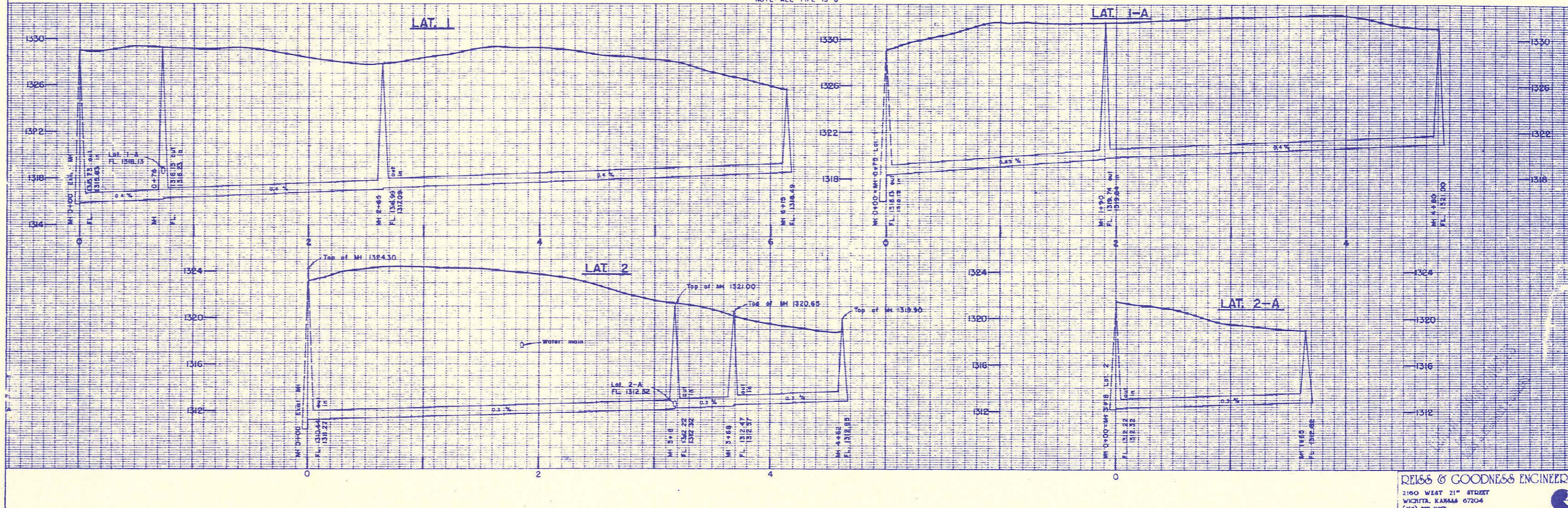
4mc-087



SCALE
 PLAN 1"=100'
 PROFILE HORIZ. 1"=40'
 VERT. 1"=4'

B.M. Top of iron in thimble
 NE cor. SE 1/4 sec.
 14-275-2E
 Elev. 1334.52

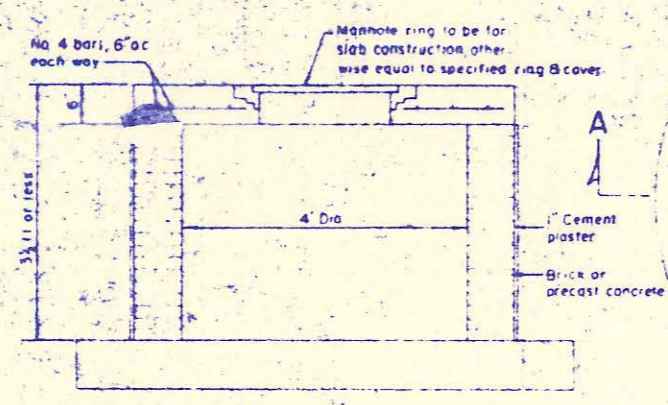
NOTE: ALL PIPE IS 8"



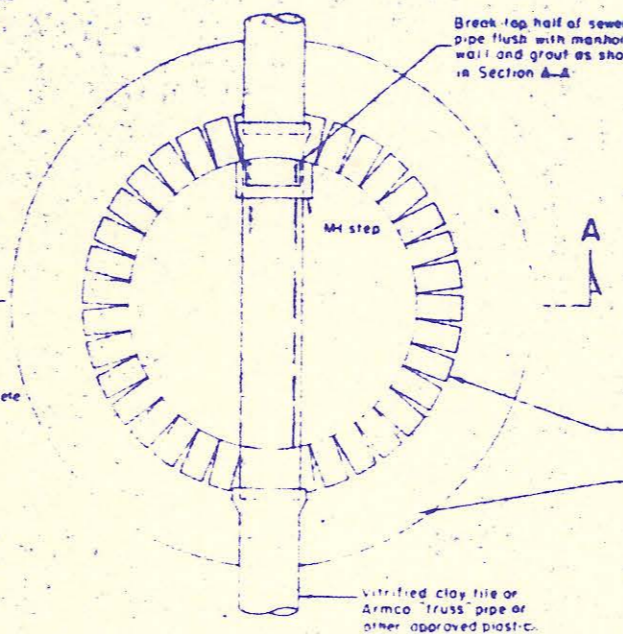
REISS & GOODNESS ENGINEERS
 2160 WEST 21ST STREET
 WICHITA, KANSAS 67204
 (316) 632-0252

REVISION	DRAWN BY	CHECKED BY	DESIGNED BY	PROJECT	CUSTOMER	SCALE	DATE	PROJECT NO.	SHEET
				SANITARY SEWER EXTENSIONS	EAST MEADOWS SECOND ADD., SEDG. CO., KS.	1"=40'	5-7-79	14-275-2E	04-3

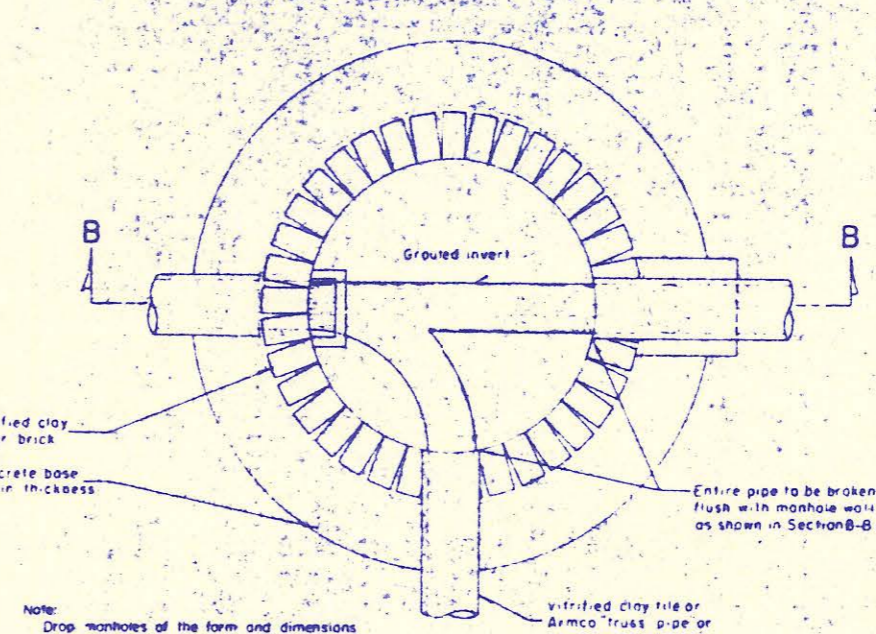
Note: Manholes 3 1/2 ft deep or less shall be constructed without a curb section but with a 6" thick reinforced concrete slab top.



Shallow Manhole
Scale 3/4" = 1'-0"

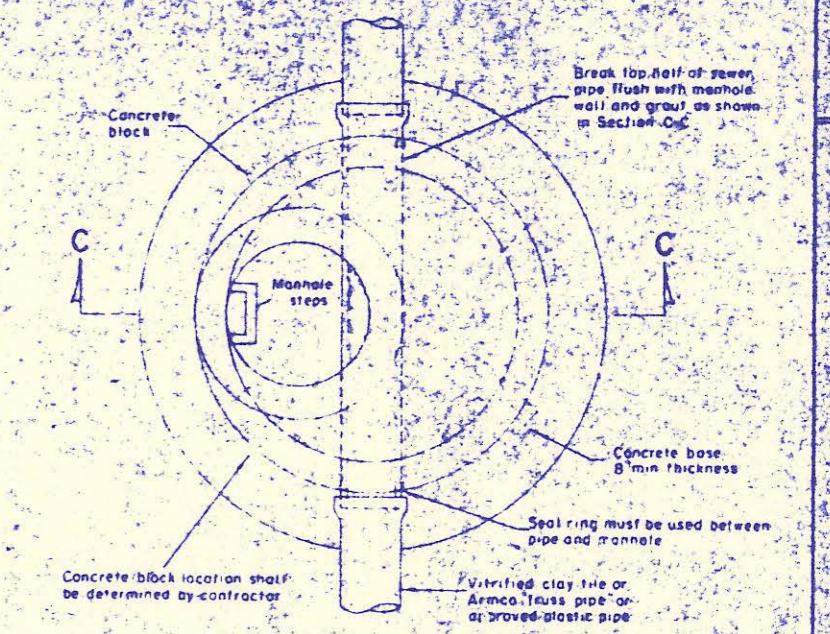


Plan

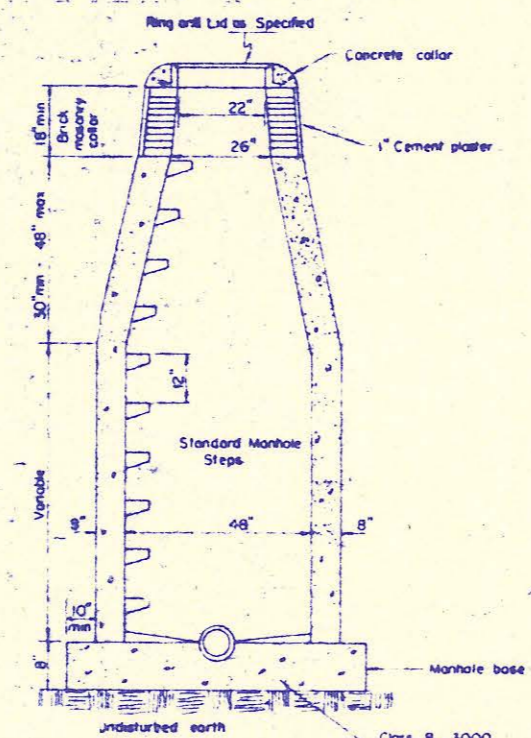


Plan

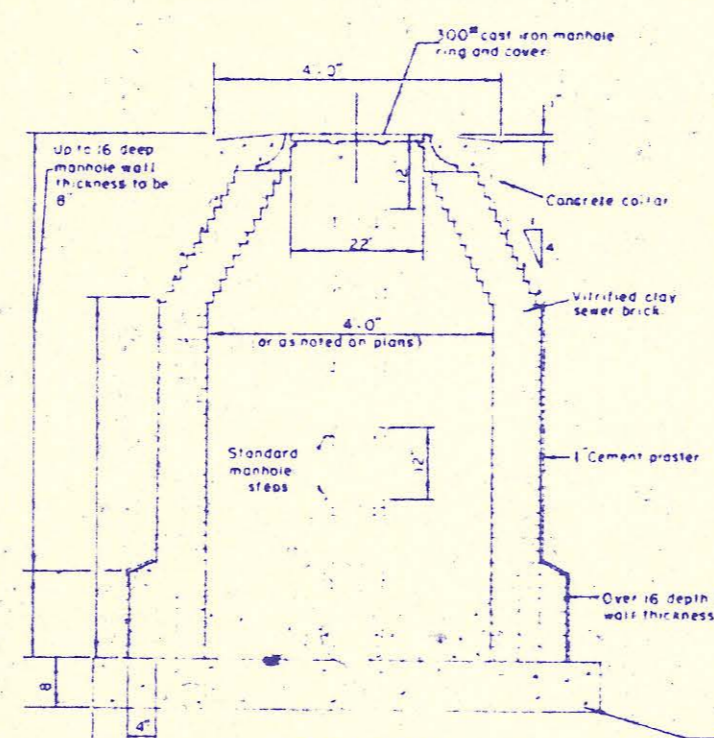
Note: Drop manholes of the form and dimensions shown on the drawings shall be built where a line enters a manhole at a greater height than two (2) feet above the invert of the manholes or where directed by the Engineer.



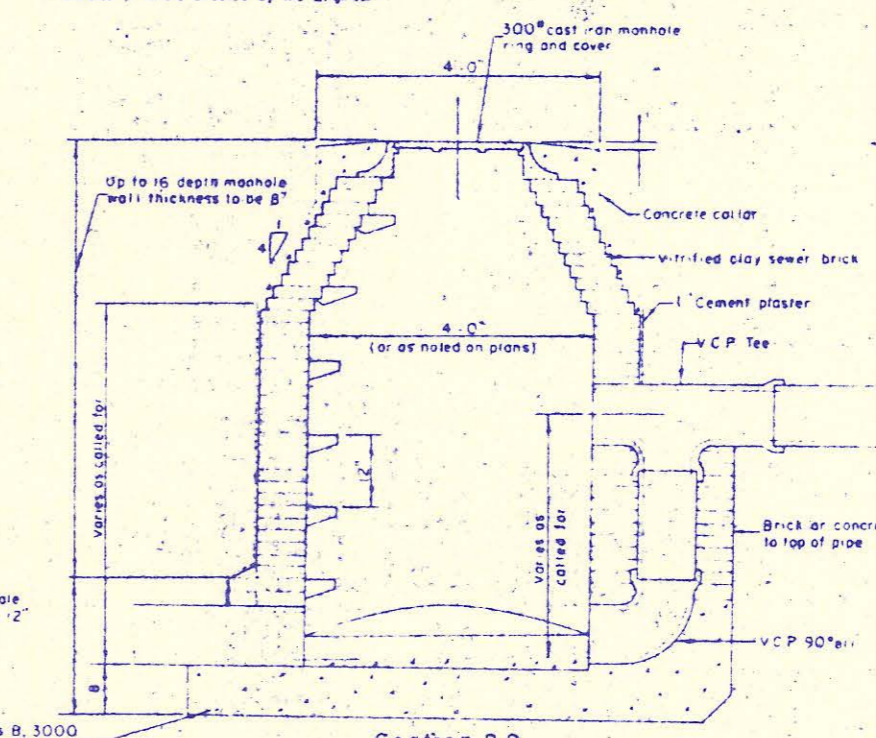
Plan



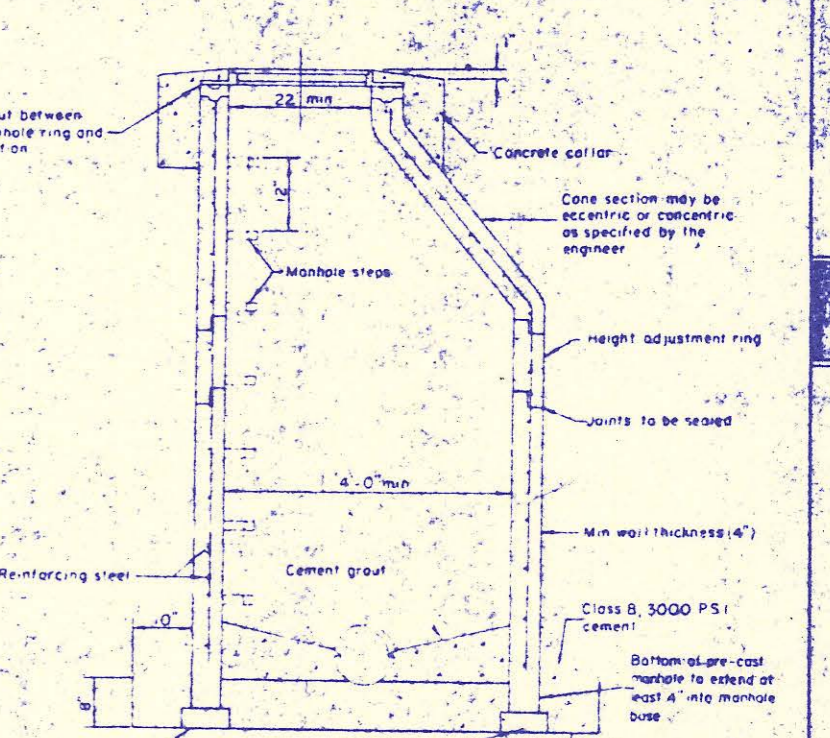
Standard Manhole, Poured in Place



Section A-A
Brick Manhole



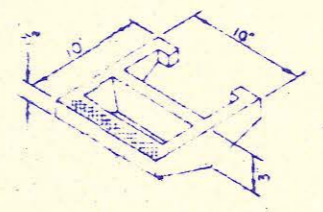
Section B-B
Brick Drop Manhole



Section C-C
Precast Reinforced Concrete Manhole

Note: Approved manhole steps shall be installed in all manholes unless specifically deleted on a project, contract or change order.

Note: Precast manholes shall have plastic liners. The liners may be Amer-Liner Type T-Liner, Prote, B. F. Goodrich, Lat-Rib, Koronol, or equal approved. The plastic liner manufacturer's recommendations for installing, sealing joints, testing and inspection of the plastic liner shall be considered as incorporated in and forming a part of these specifications. The manhole supplier shall furnish to the engineer three (3) copies of the plastic liner manufacturer's recommendations prior to the fabrication of any manholes.



Manhole Step
Scale 3/4" = 1'-0"

Note: This standard sheet shows the types of construction for the items shown which will normally be encountered on a sewerage project. Special conditions or types of construction are shown on other drawings and specifications.