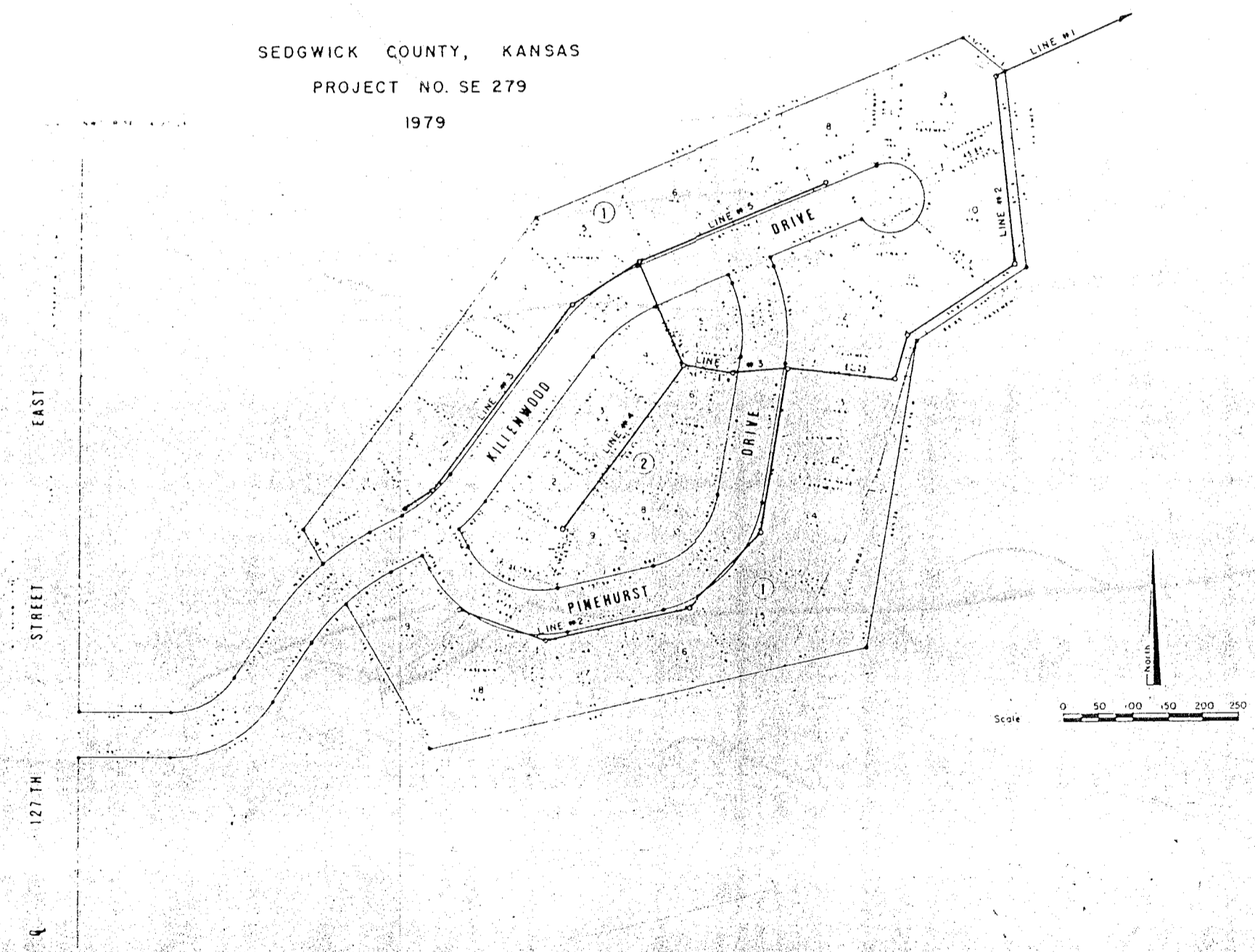


PLANS

SANITARY SEWER EXTENSIONS

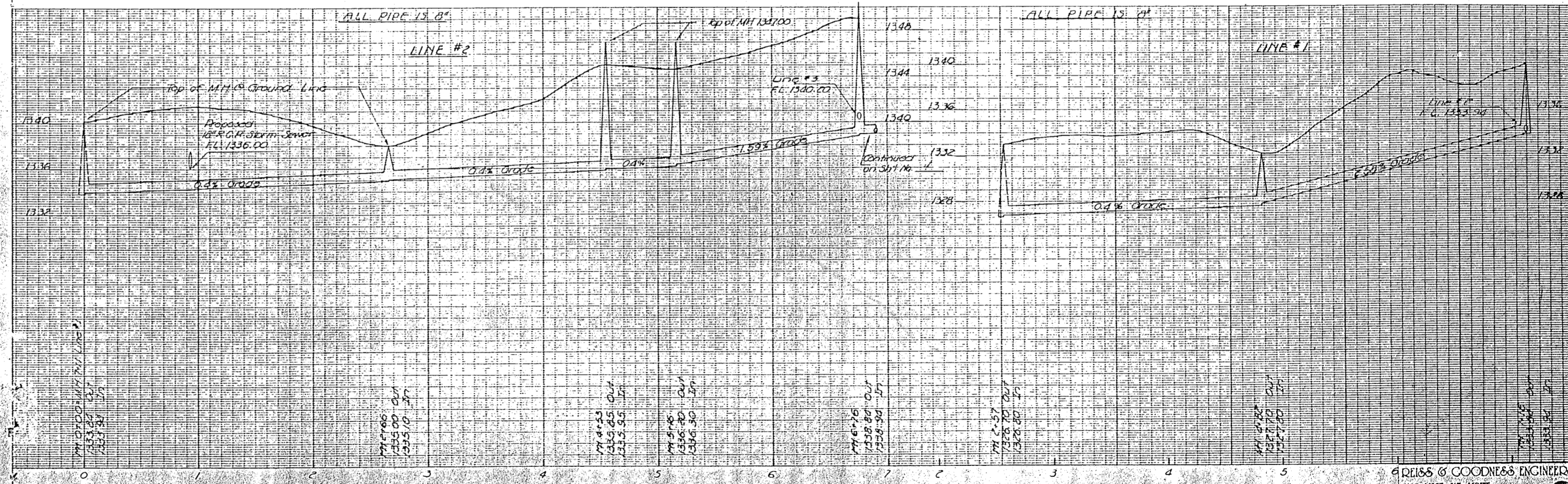
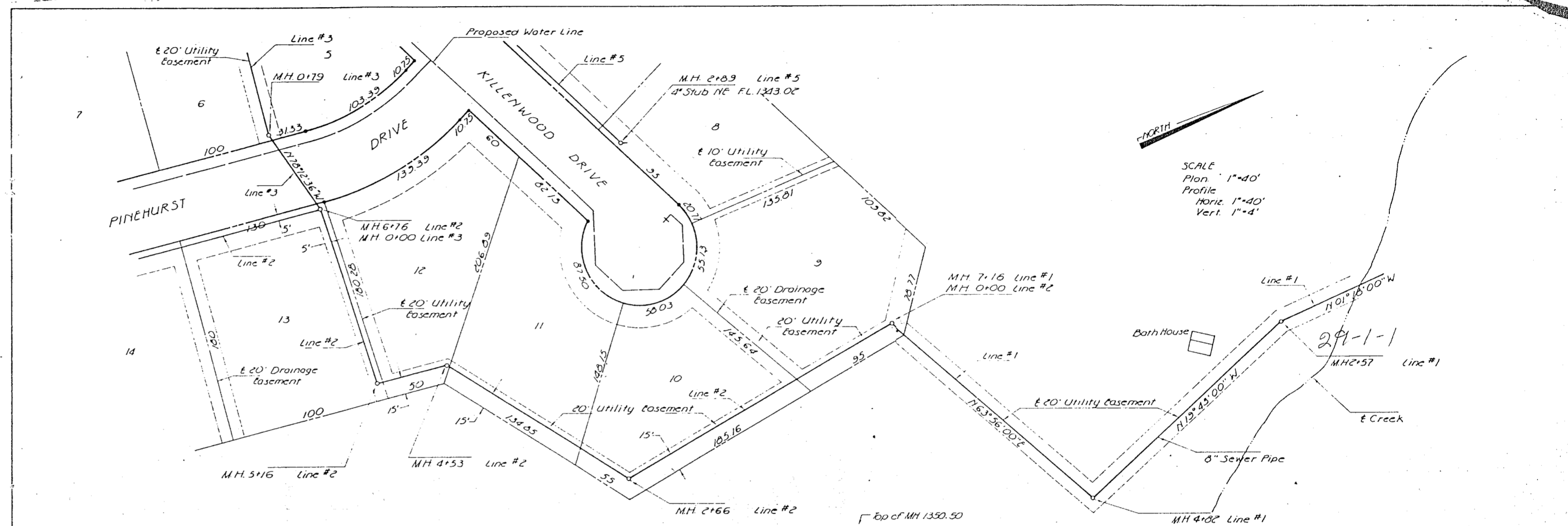
CRESTVIEW COUNTRY CLUB ESTATES KIMBERLY HILLS ADDITION

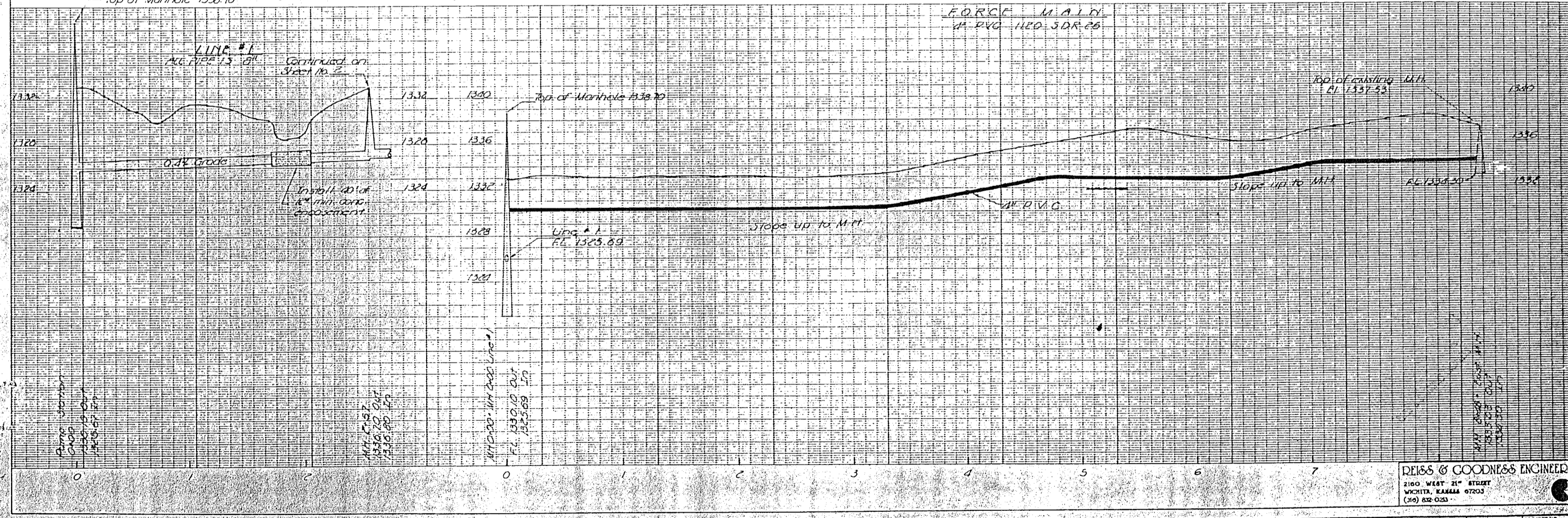
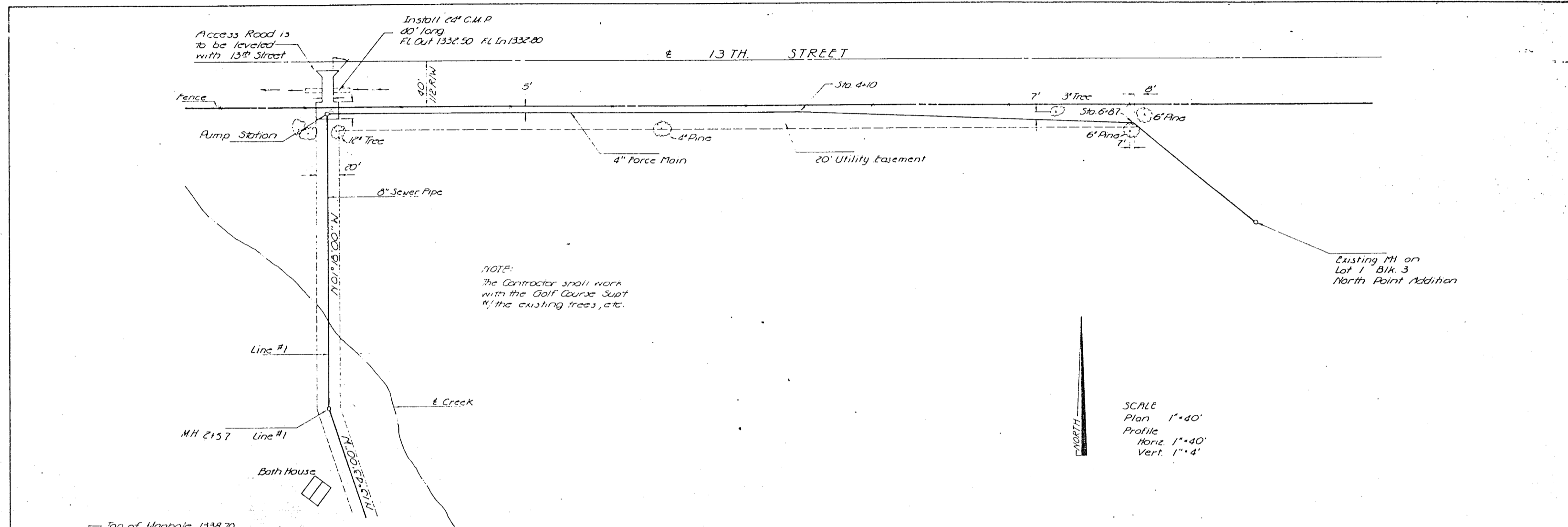
SEDGWICK COUNTY, KANSAS
PROJECT NO. SE 279
1979

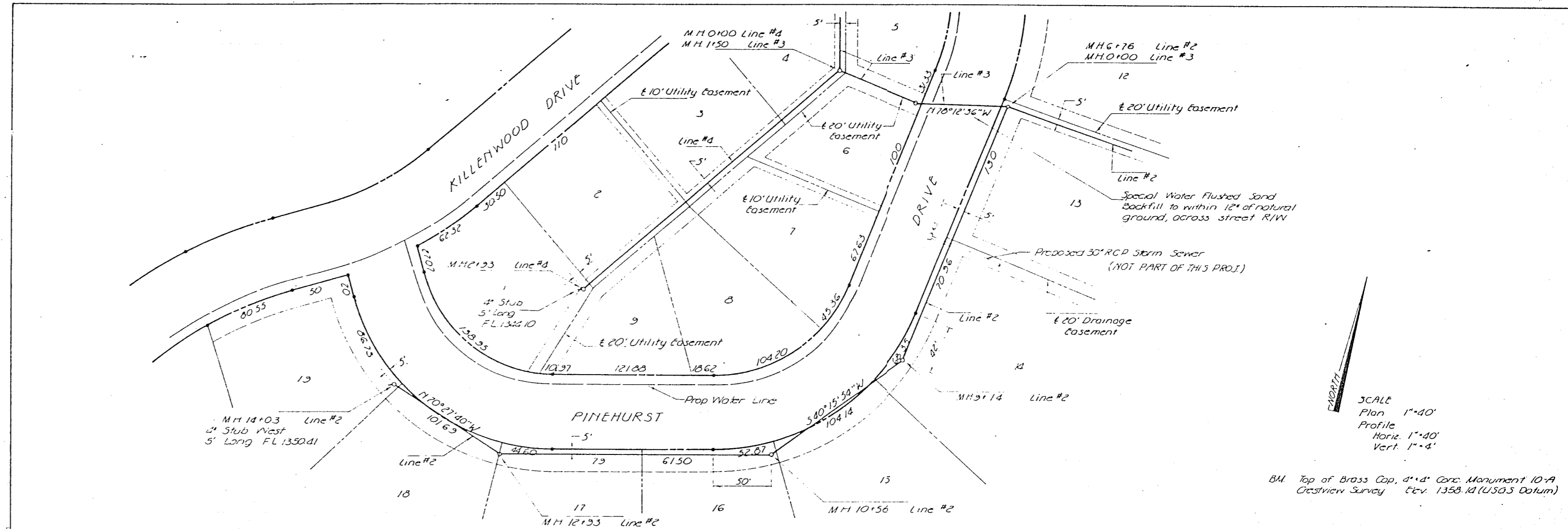


BEISS & CO. ENGINEERS, INC.
 1100 WEST 21ST STREET
 WALKER, KANSAS 67207
 (316) 442-0100

DATE: 12/23/79
 SHEET: 2 OF 2

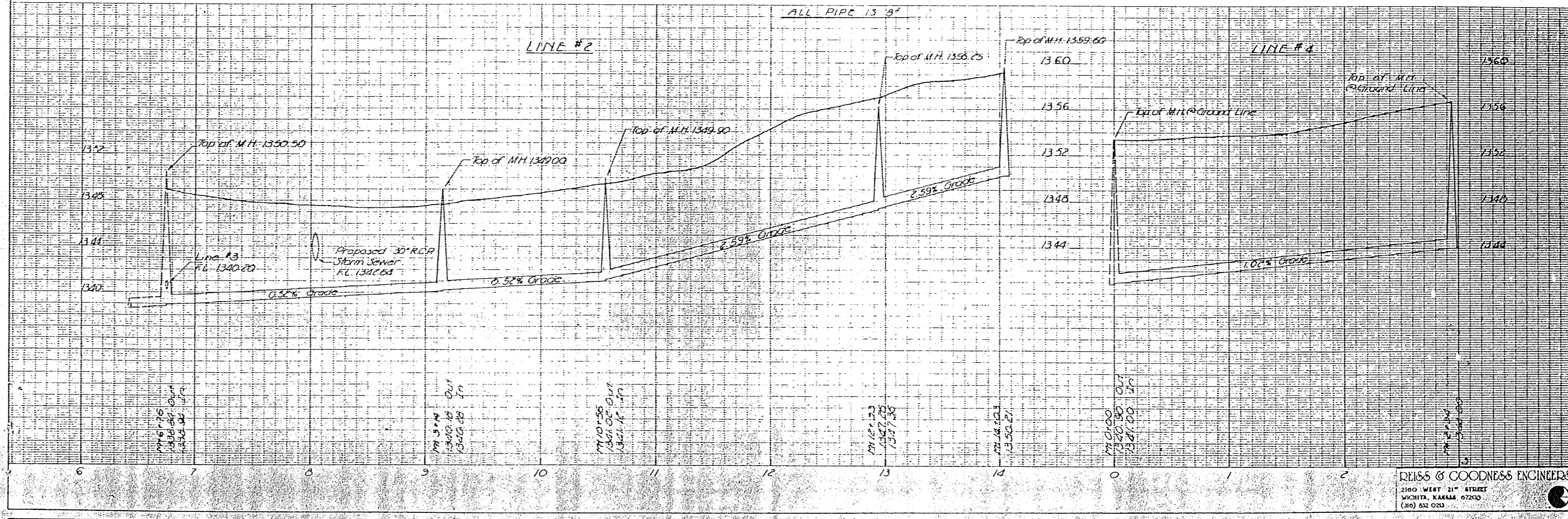






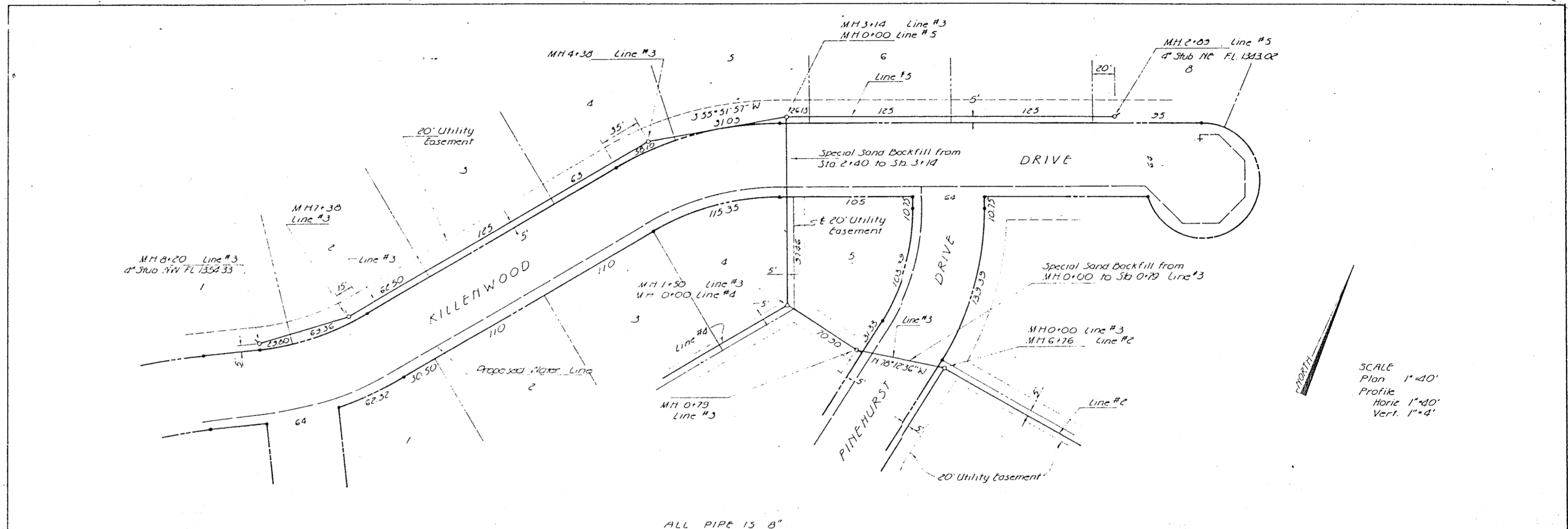
SCALE
 Plan 1"=40'
 Profile 1"=40'
 Vert 1"=4'

BM Top of Brass Cap, 4" x 4" Conc. Monument 10-A
 Overview Survey Dec. 1958.10 (USGS Datum)



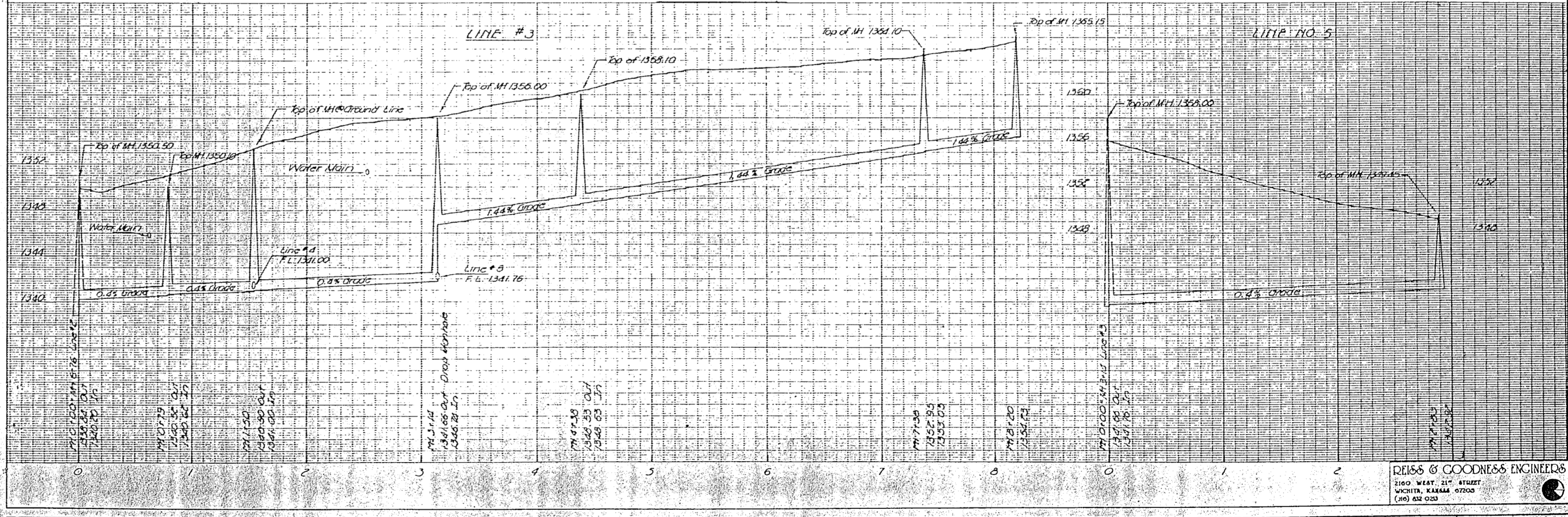
REVISION	DRAWN BY	CHECKED BY	DESIGNED BY	PROJECT	CUSTOMER	DATE	SHEET
	A.P.			SANITARY SEWER EXTENSIONS	KIMBERLY HILLS ADDITION - Sedgwick County, Kansas	11-27-79	4 of 4

DEISS & GOODNESS ENGINEERS
 2100 WEST 21ST STREET
 WICHITA, KANSAS 67203
 (316) 261-0233

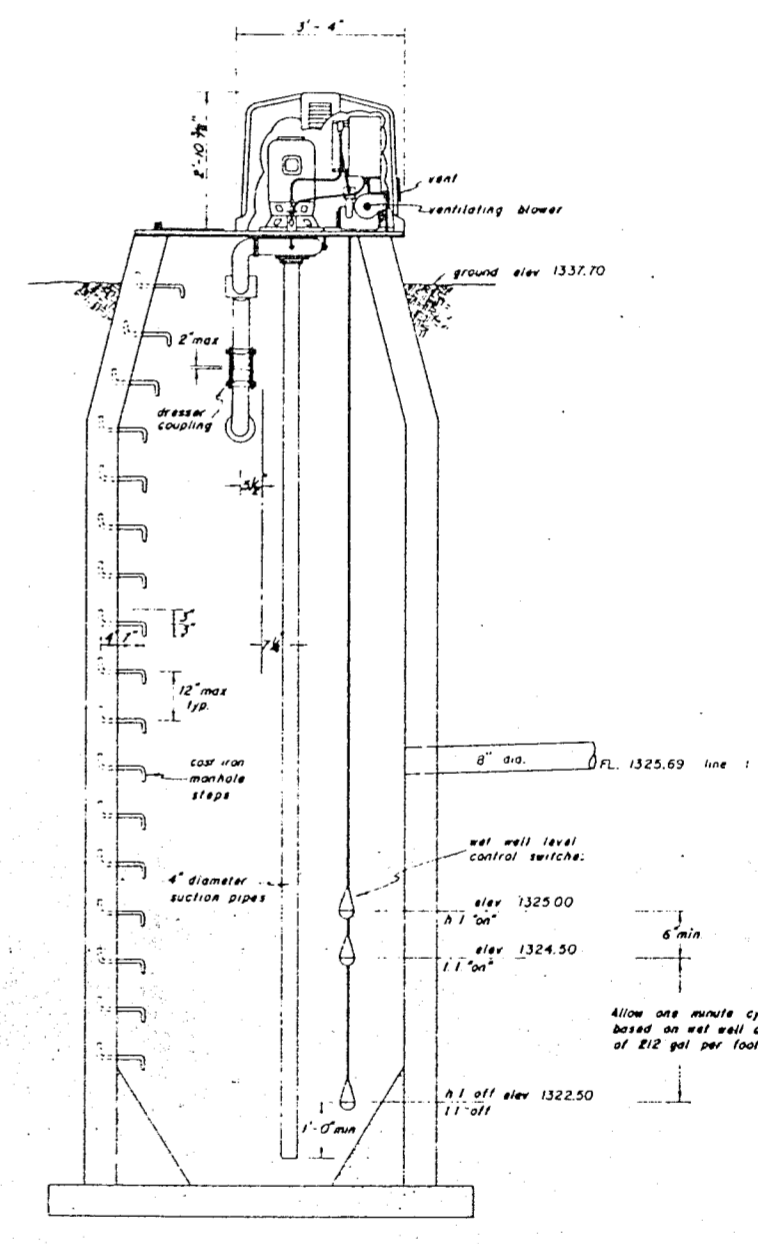
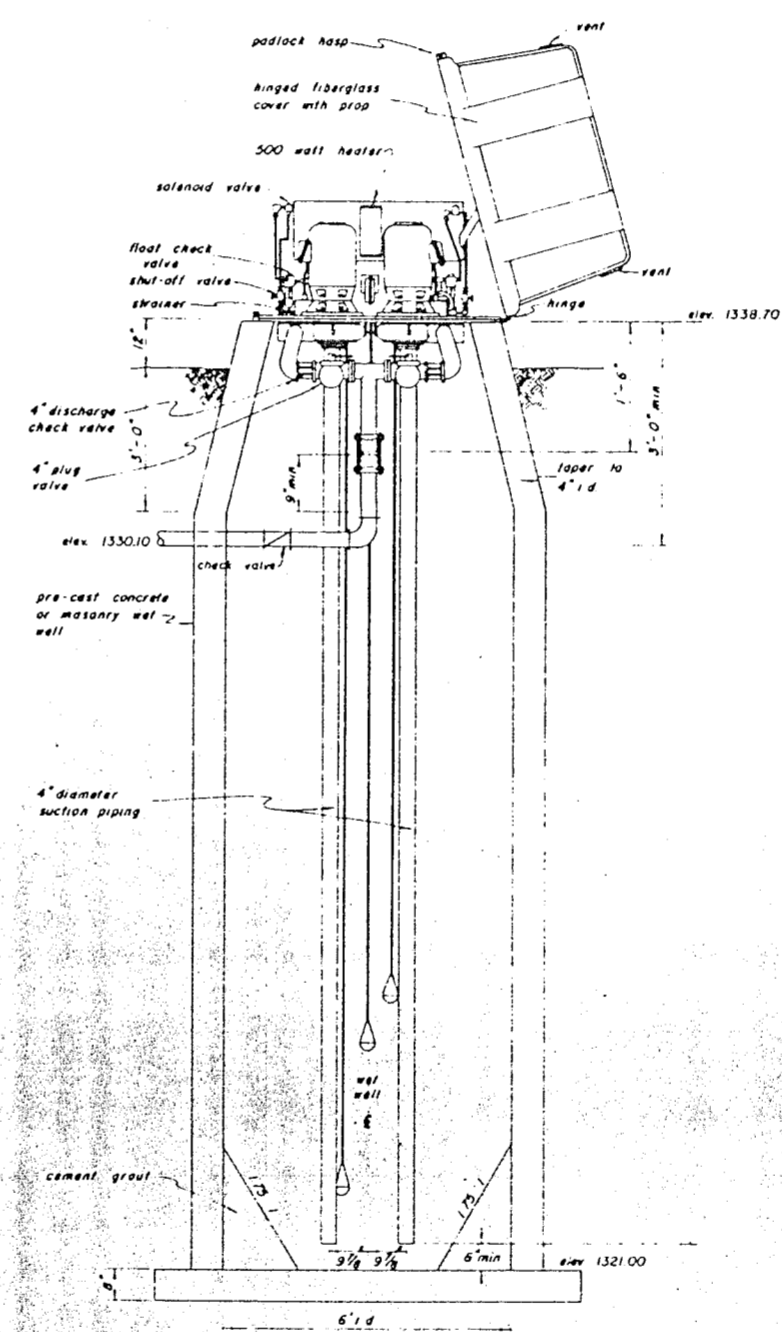
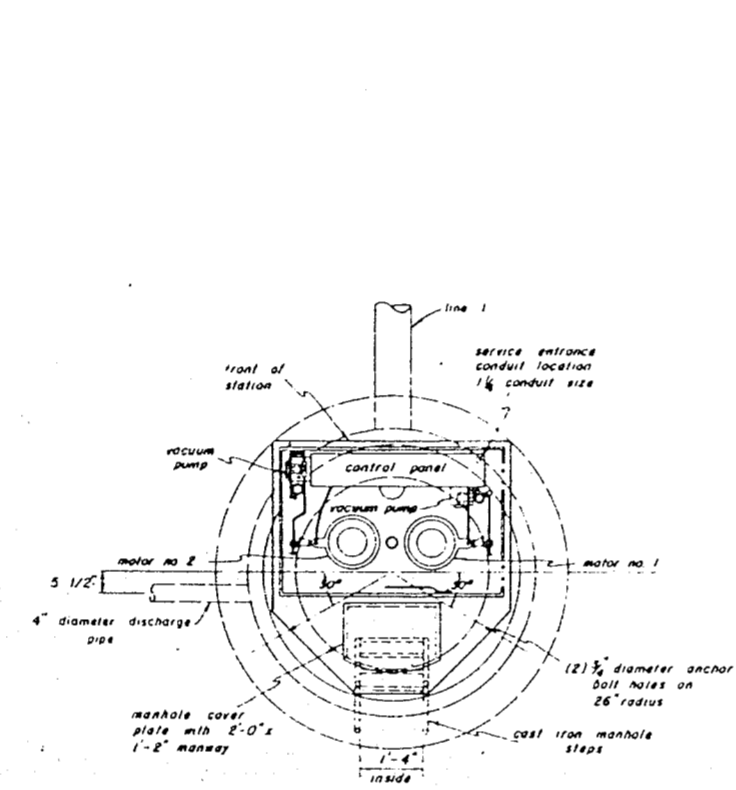


SCALE
Plan 1"=40'
Profile 1"=40'
Vert. 1"=4'

ALL PIPE IS 8"



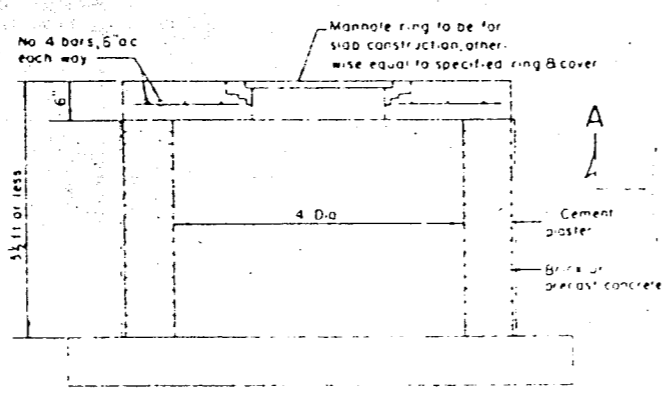
Note
 This drawing shows only general conditions
 for a well mounted pumping station and
 is not intended to indicate a particular pump
 manufacturer details of the pump proposed
 must be approved by the engineer.



REISS & GOODNESS ENGINEERS
 2100 WEST 21ST STREET
 WICHITA, KANSAS 67202
 (913) 633-0222

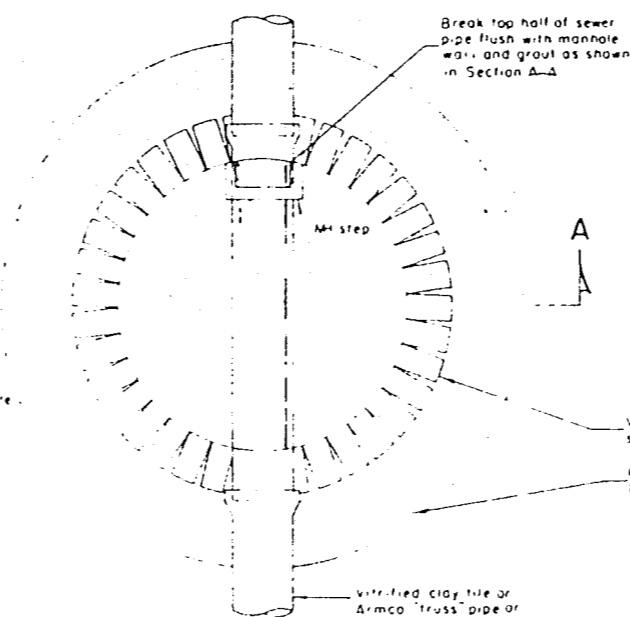
REVISION	DRAWN BY	CHECKED BY	DESIGNED BY	PROJECT	CUSTOMER	SCALE	PROJECT NO.
				SANITARY SEWER EXTENSIONS	KIMBERLY HILLS ADDITION - Sedgwick County, Kansas	DATE 5-30-79	SHEET 6 OF 8

Note
Manholes 3 1/2 ft deep or less shall be constructed without a cone section but with a 6" thick reinforced concrete slab top.

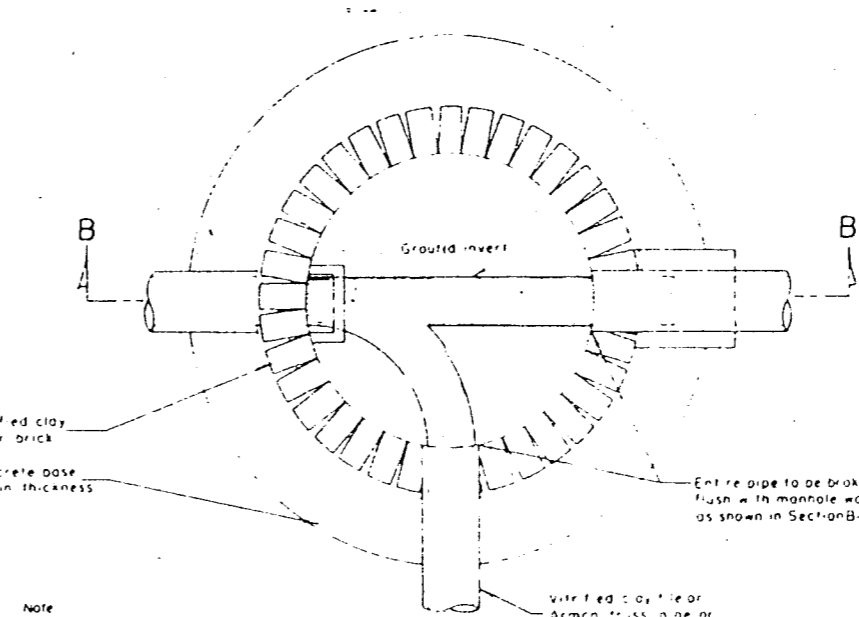


Shallow Manhole

Scale 1/4" = 1'-0"

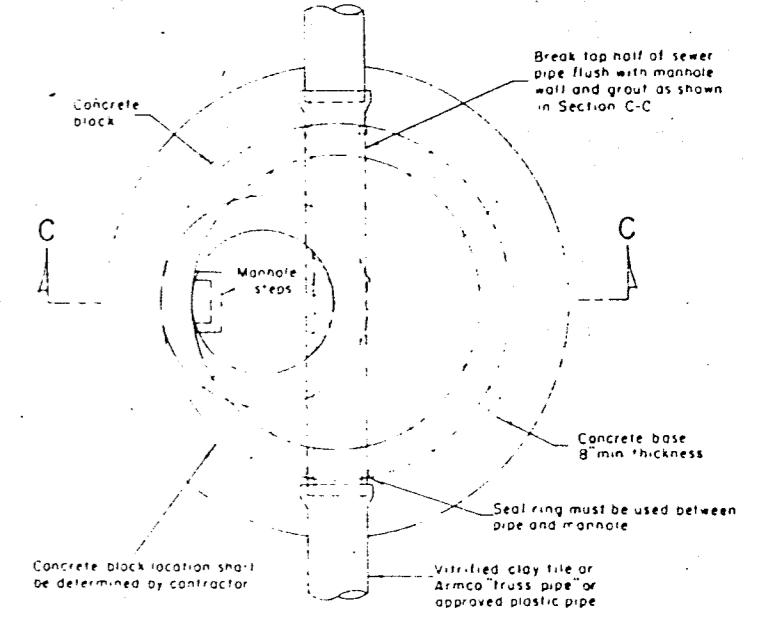


Plan

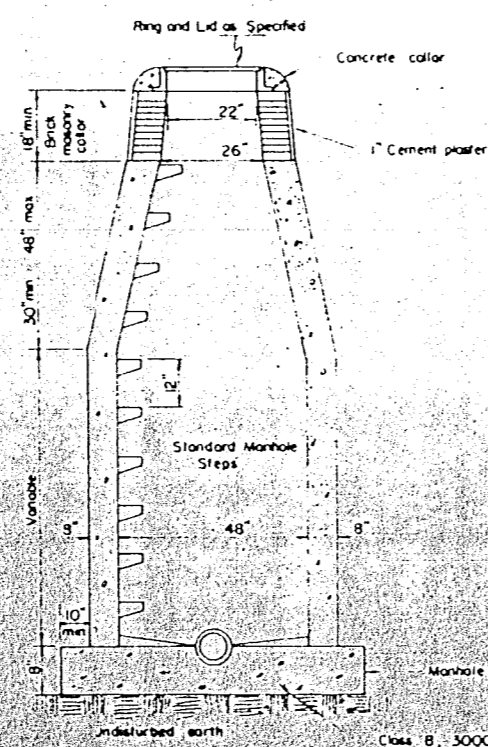


Plan

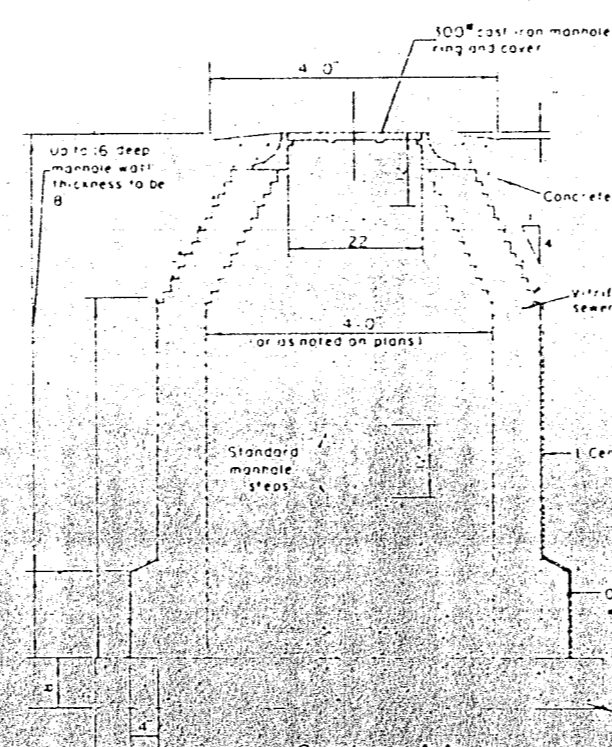
Note
Drop manholes of the form and dimensions shown on the drawings shall be built where a line crosses a manhole at a greater height than two (2) feet above the invert of the manholes or where directed by the Engineer.



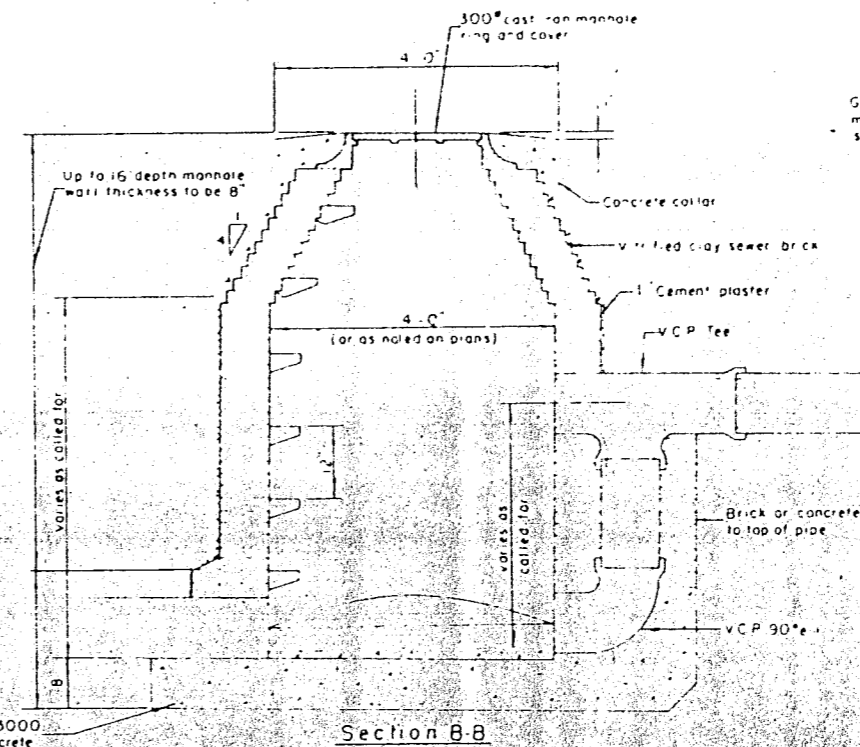
Plan



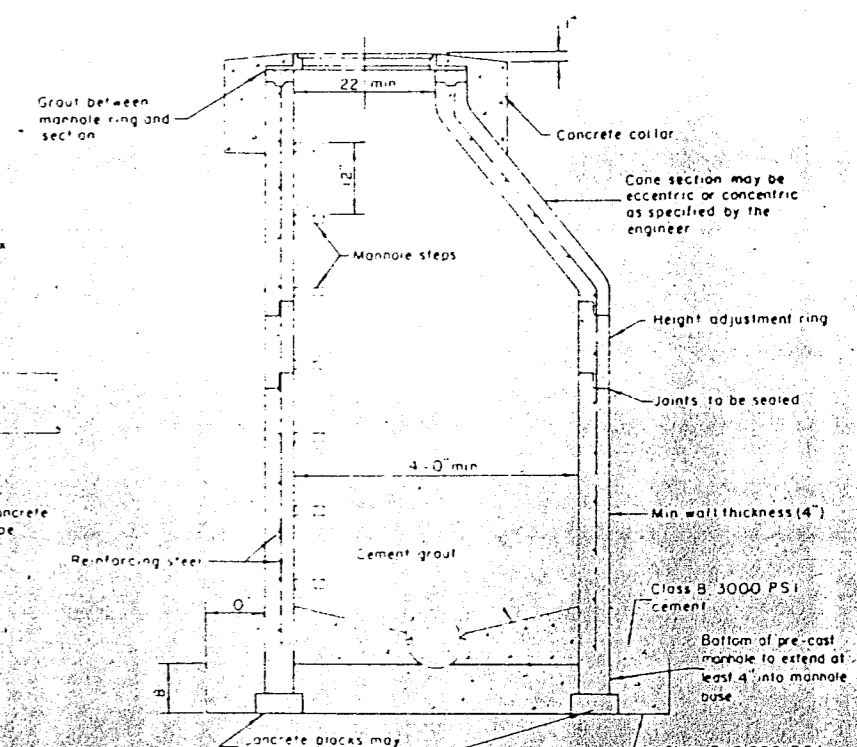
Standard Manhole, Poured in Place



**Section A-A
Brick Manhole**



**Section B-B
Brick Drop Manhole**



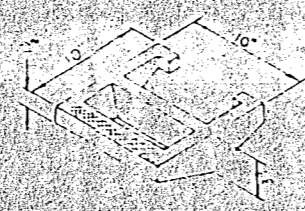
**Section C-C
Precast Reinforced
Concrete Manhole**

Scale 1/4" = 1'-0"

Note
Approved manhole steps shall be installed in all manholes unless specifically deleted on a project contract or change order.

Note
Precast manholes shall have plastic liners. The liners may be Amer-Plate T-Lock Liner Plate, B.F. Goodrich LAK-RIB liner, or equal approved. The plastic liner manufacturer's recommendations for installing, sealing joints, testing and inspection of the plastic liner shall be considered as incorporated in and hereby a part of these specifications. The manhole supplier shall furnish to the engineer three (3) copies of the plastic liner manufacturer's recommendations prior to the installation of any manhole.

Note
This standard sheet shows the types of construction for the items shown which will normally be encountered on a sewerage project. Special conditions or types of construction are shown on other drawings and specifications.



Manhole Step

Scale 1/4" = 1'-0"

PROJECT: STANDARD SEWER DETAILS
 SYSTEM: SANITARY SEWER SYSTEM
 DISTRICT: CRESTVIEW IMPROVEMENT DISTRICT
 DATE: 3-19-76
 DRAWN BY: [Name]
 CHECKED BY: [Name]
 10-6-76
 SHEET NO. 514
 OF 8