

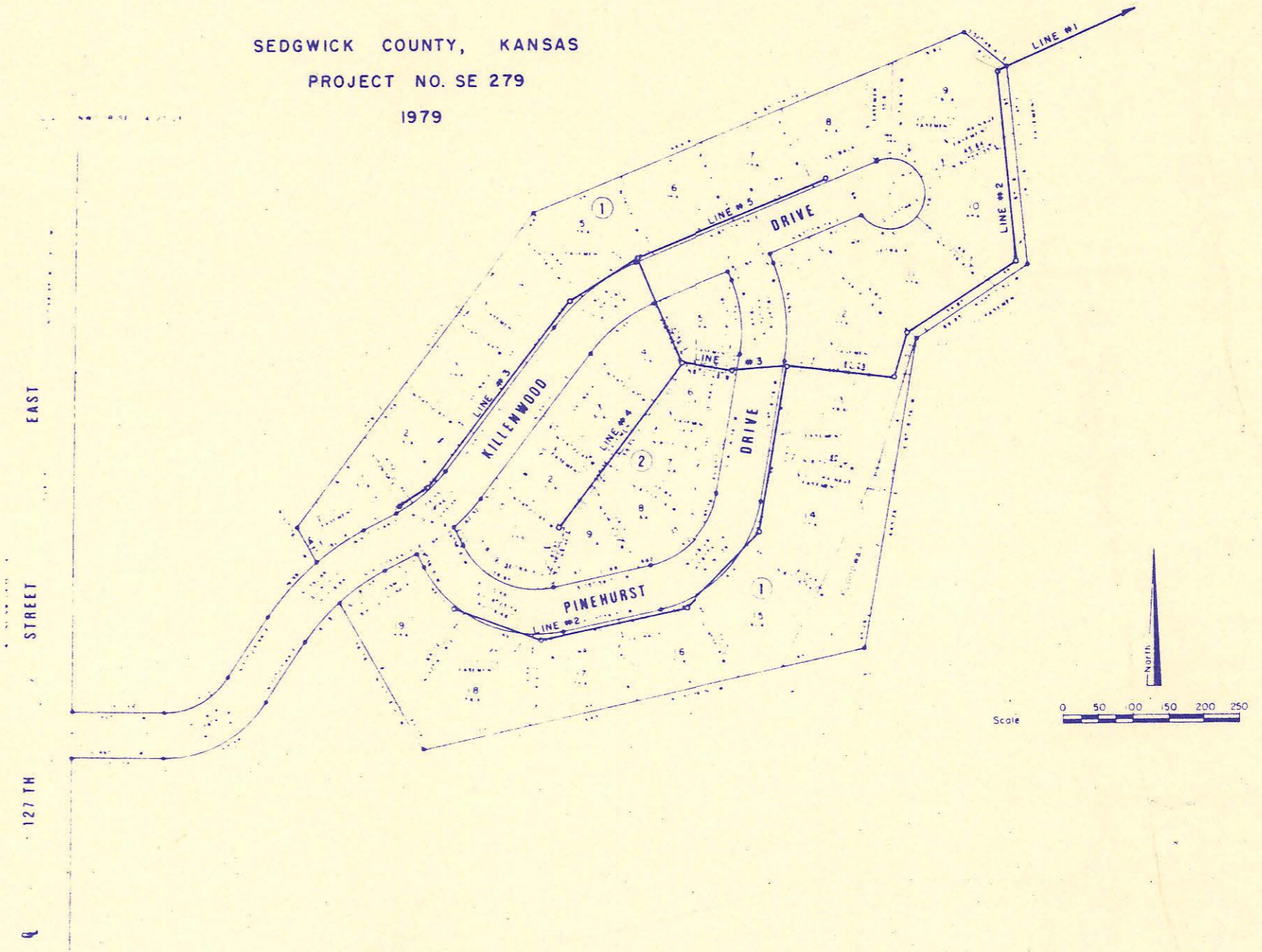
4MC-088

PLANS

# SANITARY SEWER EXTENSIONS

## CRESTVIEW COUNTRY CLUB ESTATES KIMBERLY HILLS ADDITION

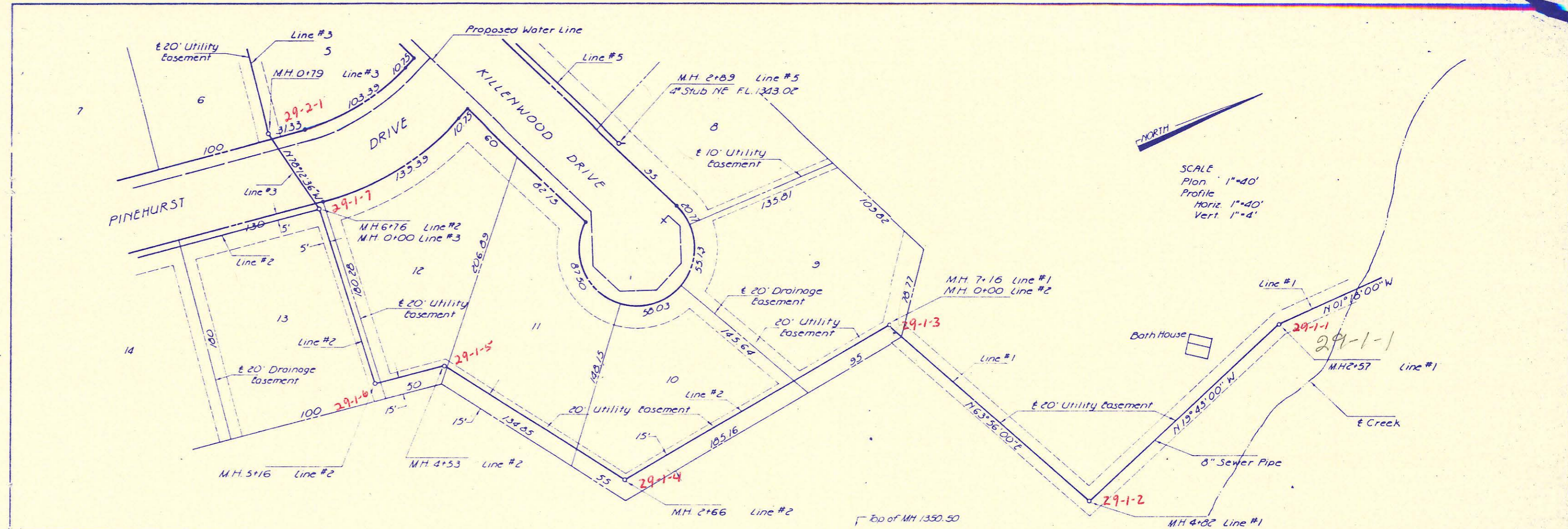
SEDGWICK COUNTY, KANSAS  
PROJECT NO. SE 279  
1979



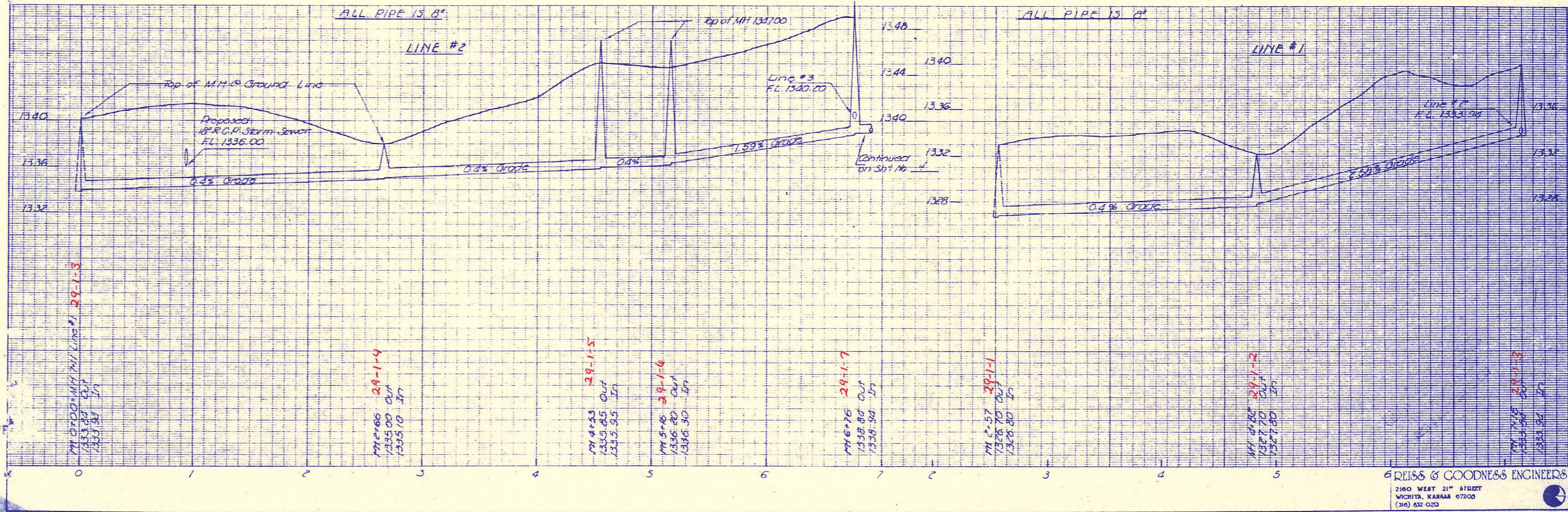
REISS & GOODNESS ENGINEERS  
 3100 WEST 21<sup>ST</sup> AVENUE  
 WICHITA, KANSAS 67203  
 (316) 261-0333

SCALE: As Shown, 1" = 40'  
 DATE: 4-2-79 SHEET 7 OF 8

4MC-088

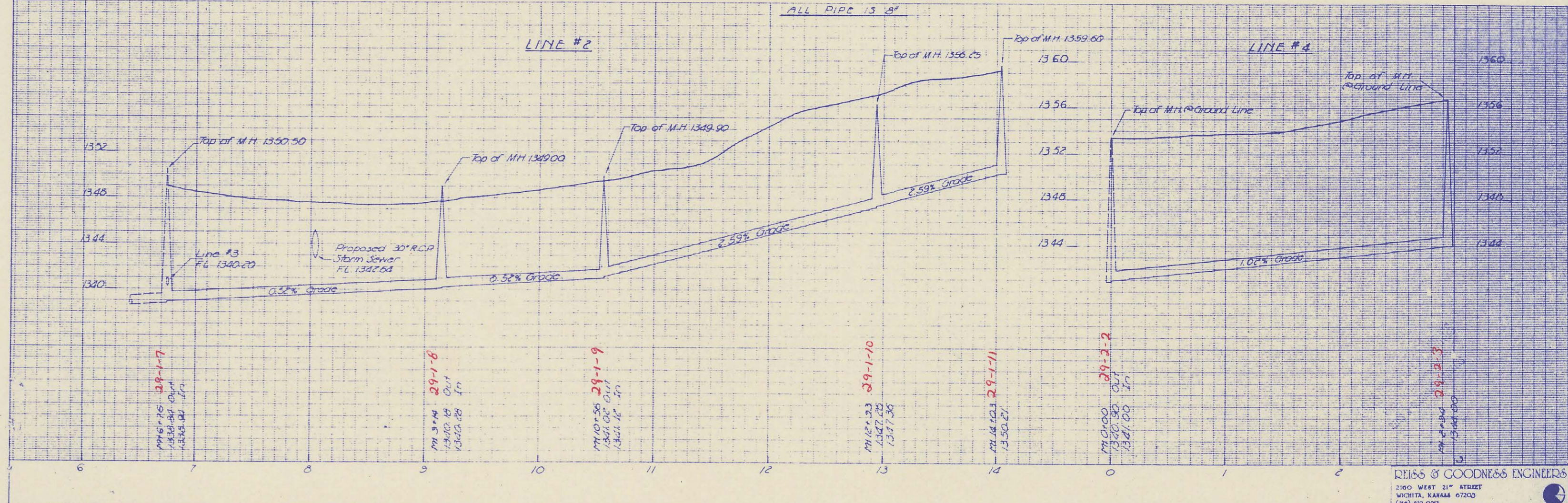
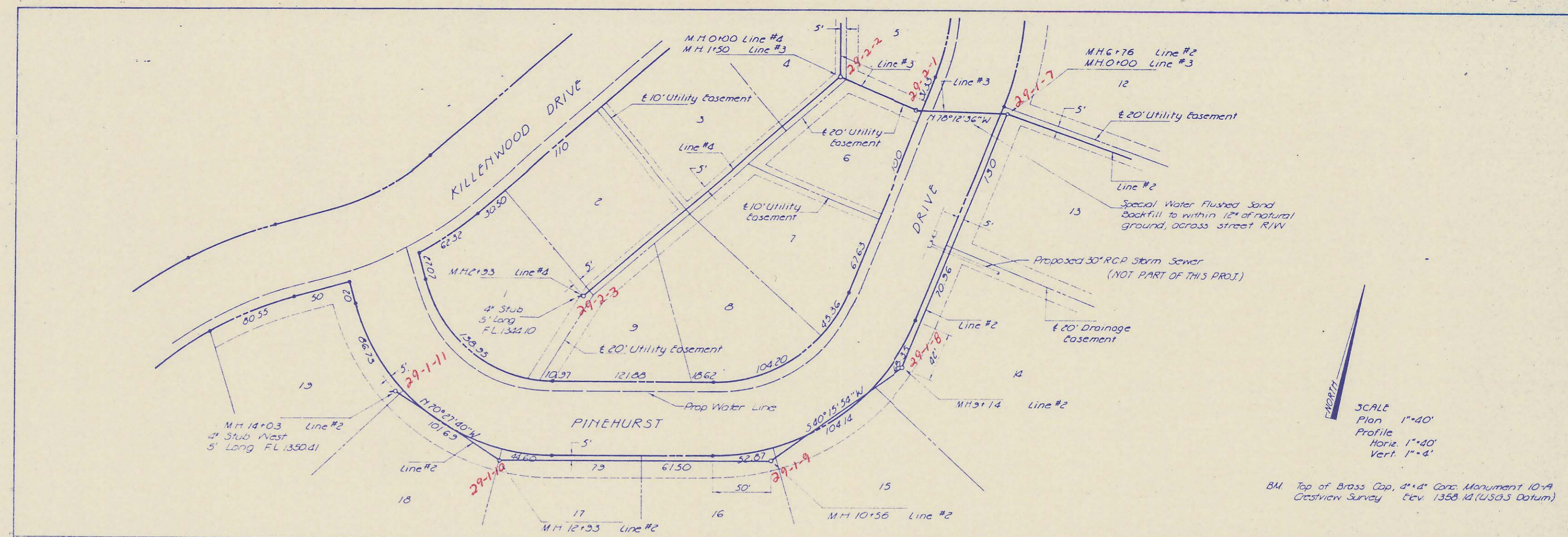


SCALE  
 Plan 1"=40'  
 Profile 1"=40'  
 Vert 1"=4'



DRAWN BY: \_\_\_\_\_ CHECKED BY: \_\_\_\_\_ DESIGNED BY: \_\_\_\_\_ PROJECT: **SANITARY SEWER EXTENSIONS**  
 CUSTOMER: **KIMBERLY HILLS ADDITION - Sedgwick County, Kansas**  
 DATE: 6-2-79 PROJECT NO: 22-22 SHEET 2 OF 3  
 REISS & GOODNESS ENGINEERS  
 2140 WEST 21<sup>ST</sup> STREET  
 WICHITA, KANSAS 67203  
 (316) 633-0220





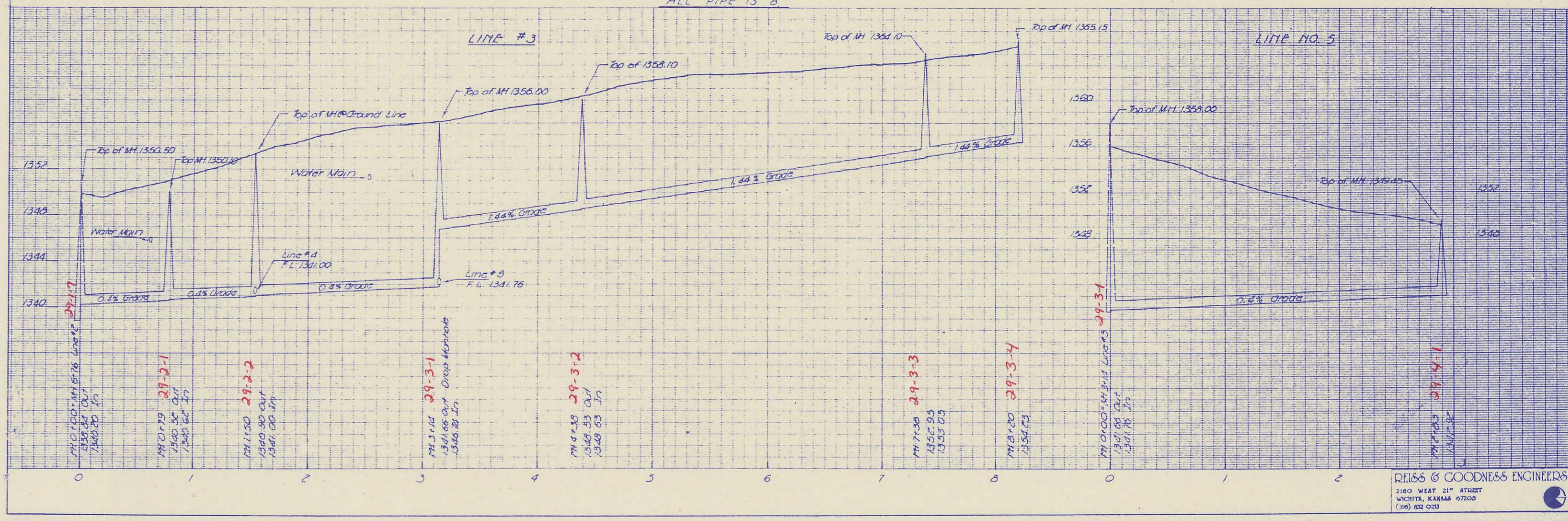
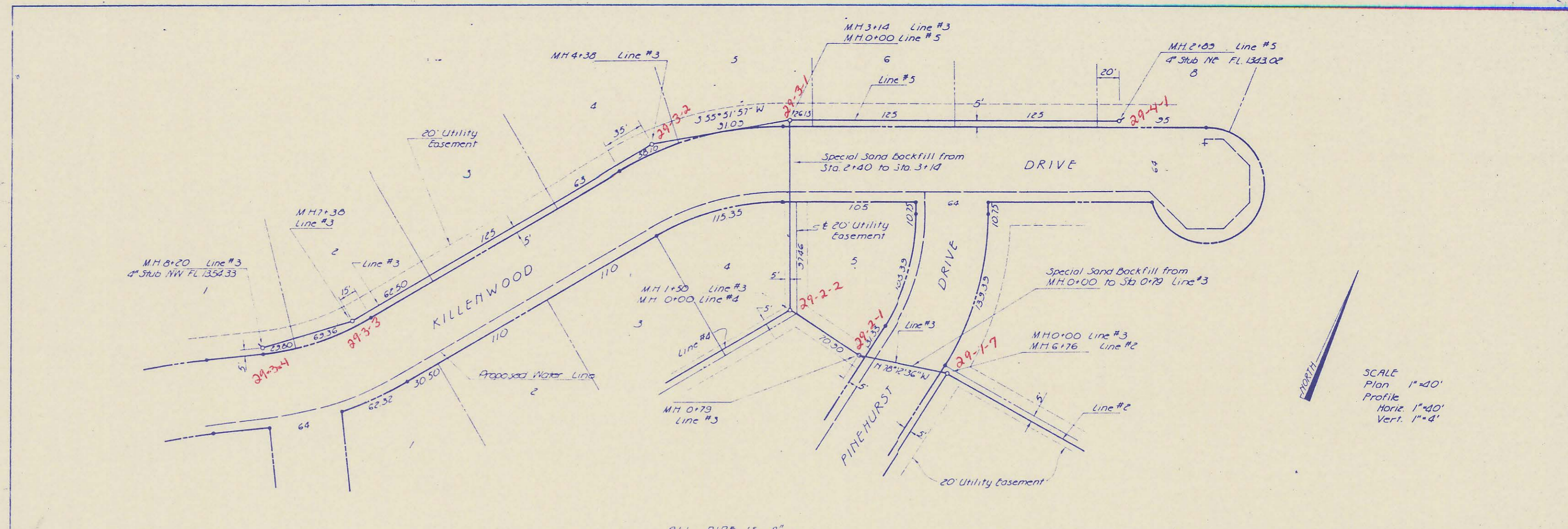
REVISION \_\_\_\_\_ DRAWN BY \_\_\_\_\_ CHECKED BY \_\_\_\_\_ DESIGNED BY \_\_\_\_\_ PROJECT \_\_\_\_\_

SANITARY SEWER EXTENSIONS

KIMBERLY HILLS ADDITION - Sedgwick County, Kansas

REISS & GOODNESS ENGINEERS  
2100 WEST 21<sup>ST</sup> STREET  
WICHITA, KANSAS 67203  
(316) 833-0200

SCALE: 1"=40' (Plan), 1"=40' (Profile), 1"=4' (Vert.)  
DATE: 2-79 PROJECT NO. 2878 SHEET 2 OF 8



REVISION \_\_\_\_\_ DRAWN BY \_\_\_\_\_ CHECKED BY \_\_\_\_\_ DESIGNED BY \_\_\_\_\_ PROJECT \_\_\_\_\_ CUSTOMER \_\_\_\_\_

**SANITARY SEWER EXTENSIONS** **KIMBERLY HILLS ADDITION - Sedgwick County, Kansas**

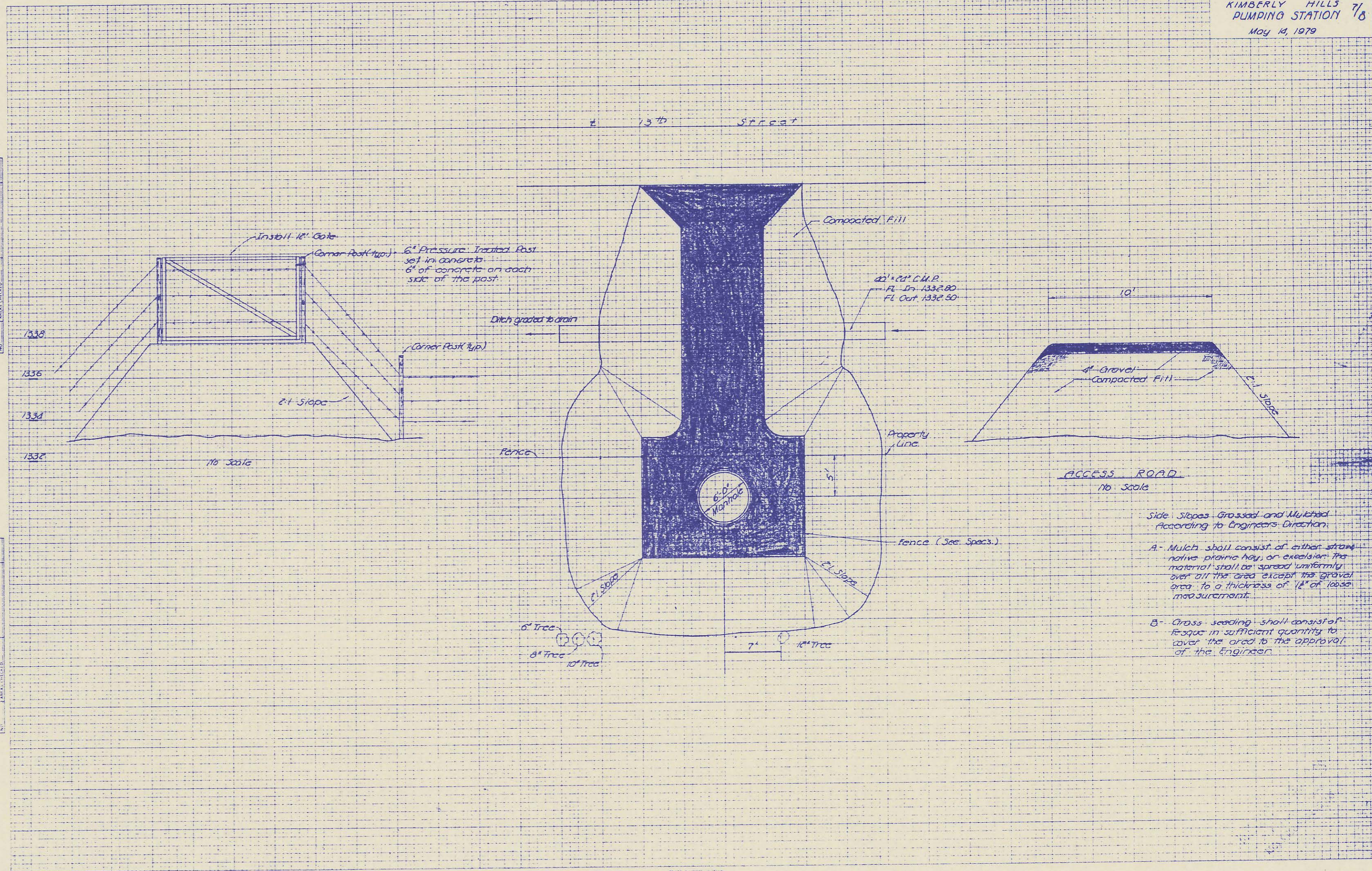
SCALE: 1"=40' (Plan), 1"=40' (Profile), 1"=8' (Vert.)

DATE: 12-2-79 PROJECT NO. 79-0001-32-072 SHEET 5 OF 8



DATE	
BY	
PROJECT	
SHEET NO.	
TOTAL SHEETS	
DATE	
BY	
PROJECT	
SHEET NO.	
TOTAL SHEETS	

DATE	
BY	
PROJECT	
SHEET NO.	
TOTAL SHEETS	
DATE	
BY	
PROJECT	
SHEET NO.	
TOTAL SHEETS	

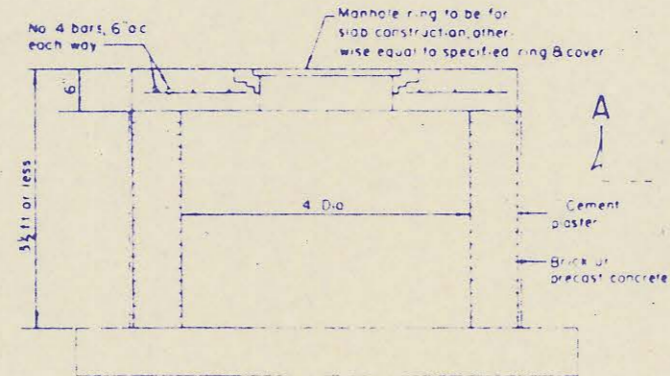


Side Slopes Grassed and Mulched according to Engineers Direction:

A- Mulch shall consist of either straw, native prairie hay, or excelsior. The material shall be spread uniformly over all the area except the gravel area to a thickness of 1" of loose measurement.

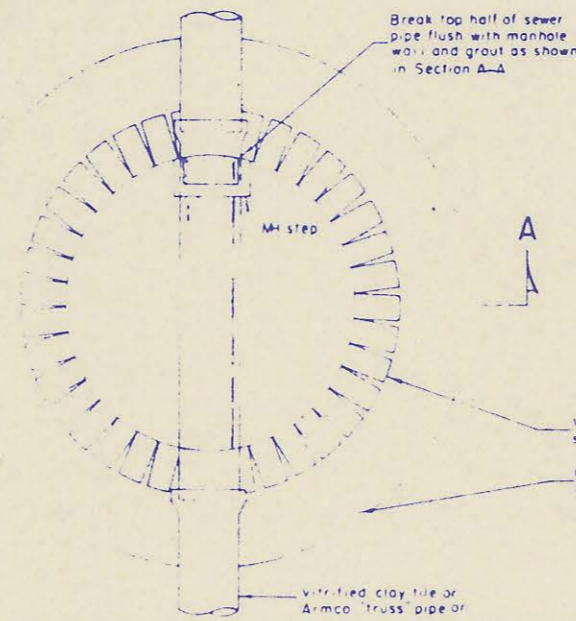
B- Grass seeding shall consist of fescue in sufficient quantity to cover the area to the approval of the Engineer.

Note  
Manholes 3 1/2 ft deep or less shall be constructed without a cone section but with a 6" thick reinforced concrete slab top



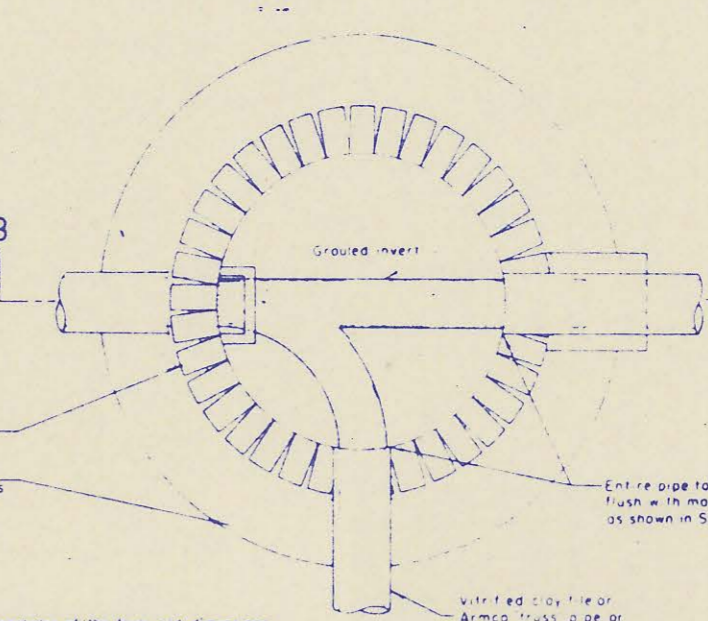
**Shallow Manhole**

Scale 1/4" = 1'-0"

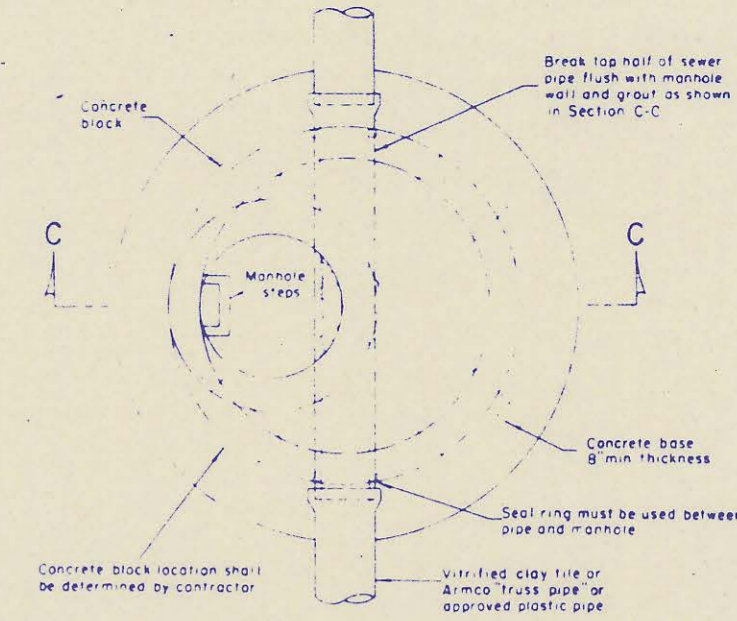


**Plan**

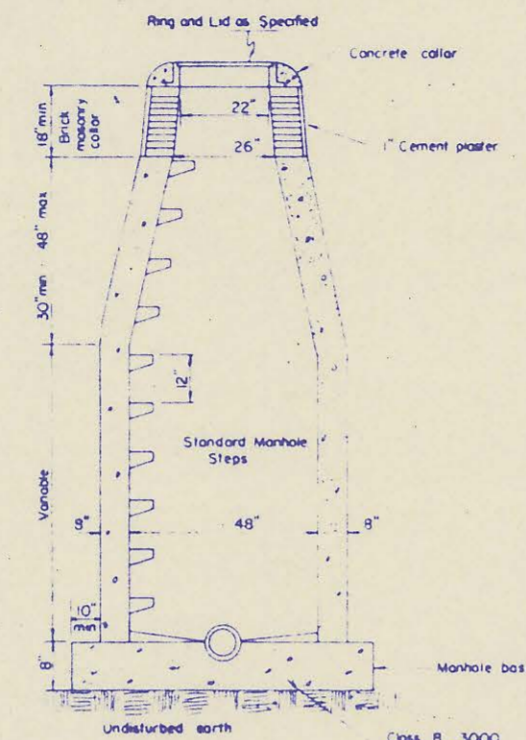
Note  
Drop manholes of the form and dimensions shown on the drawings shall be built where a line crosses a manhole at a greater height than two (2) feet above the invert of the manholes or where directed by the Engineer



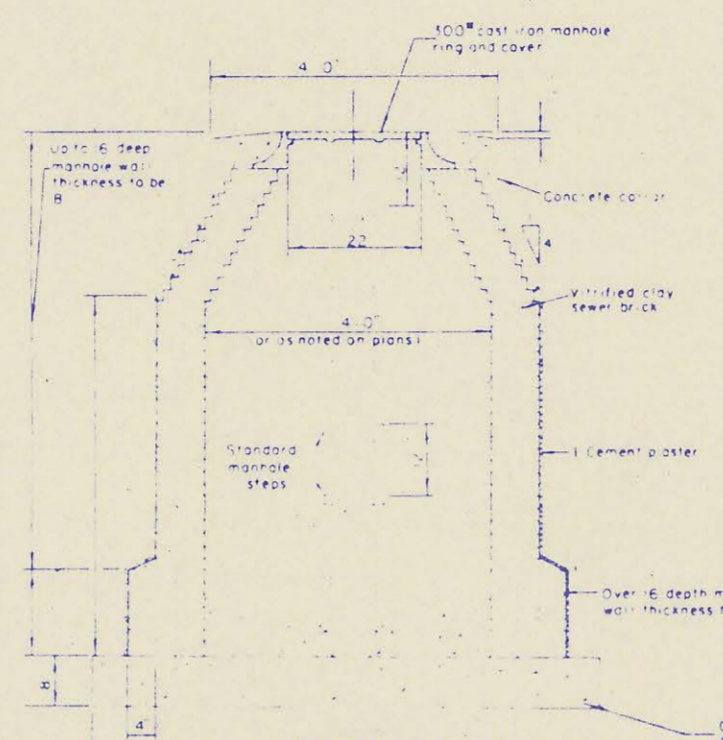
**Plan**



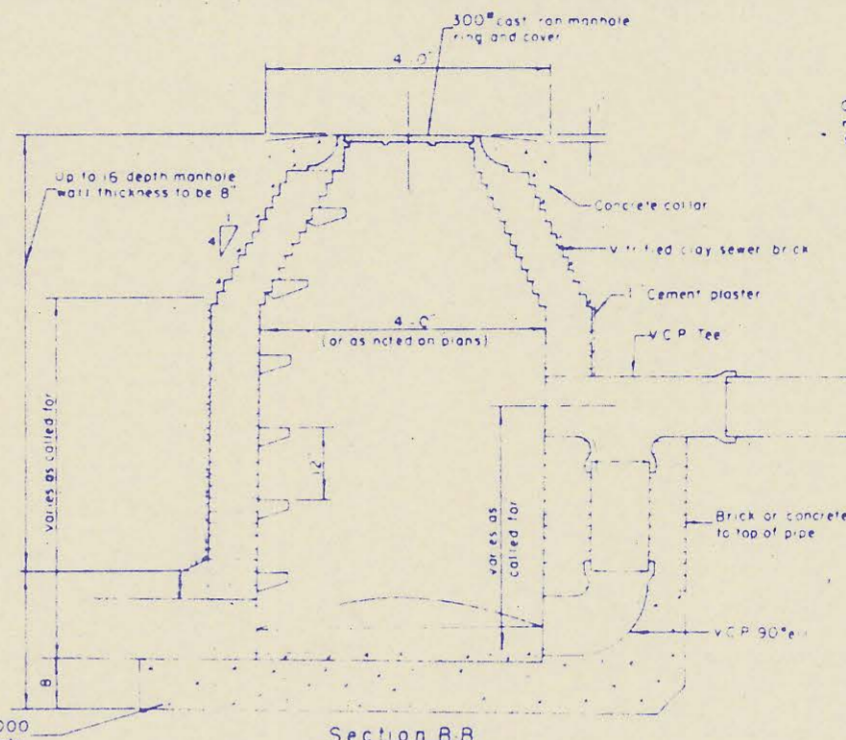
**Plan**



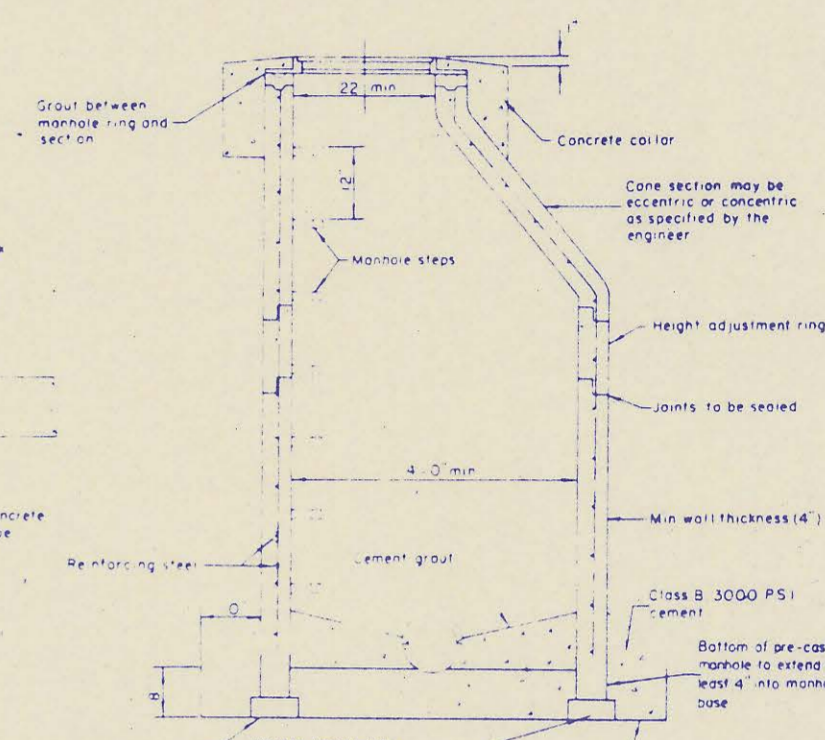
**Standard Manhole, Poured in Place**



**Section A-A  
Brick Manhole**



**Section B-B  
Brick Drop Manhole**



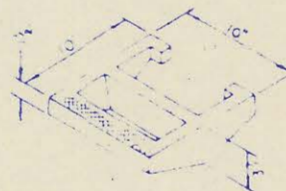
**Section C-C  
Precast Reinforced  
Concrete Manhole**

Scale 1/4" = 1'-0"

Note  
Approved manhole steps shall be installed in all manholes, unless specifically deleted on a project, contract or change order.

Note  
Precast manholes shall have plastic liners. The liners may be Ameri-liner (polymer concrete), B-F (polymer), Lax-rib (polymer), or equal approved. The plastic liner manufacturer's recommendations for installing, sealing joints, testing and inspection of the plastic liner shall be considered as incorporated in and forming a part of these specifications. The manhole supplier shall furnish to the engineer three (3) copies of the plastic liner manufacturer's recommendations prior to the fabrication of any manhole.

Note  
This standard sheet shows the types of construction for the items shown which will normally be encountered on a sewerage project. Special conditions or types of construction are shown on other drawings and specifications.



**Manhole Step**

Scale 1/4" = 1'-0"