

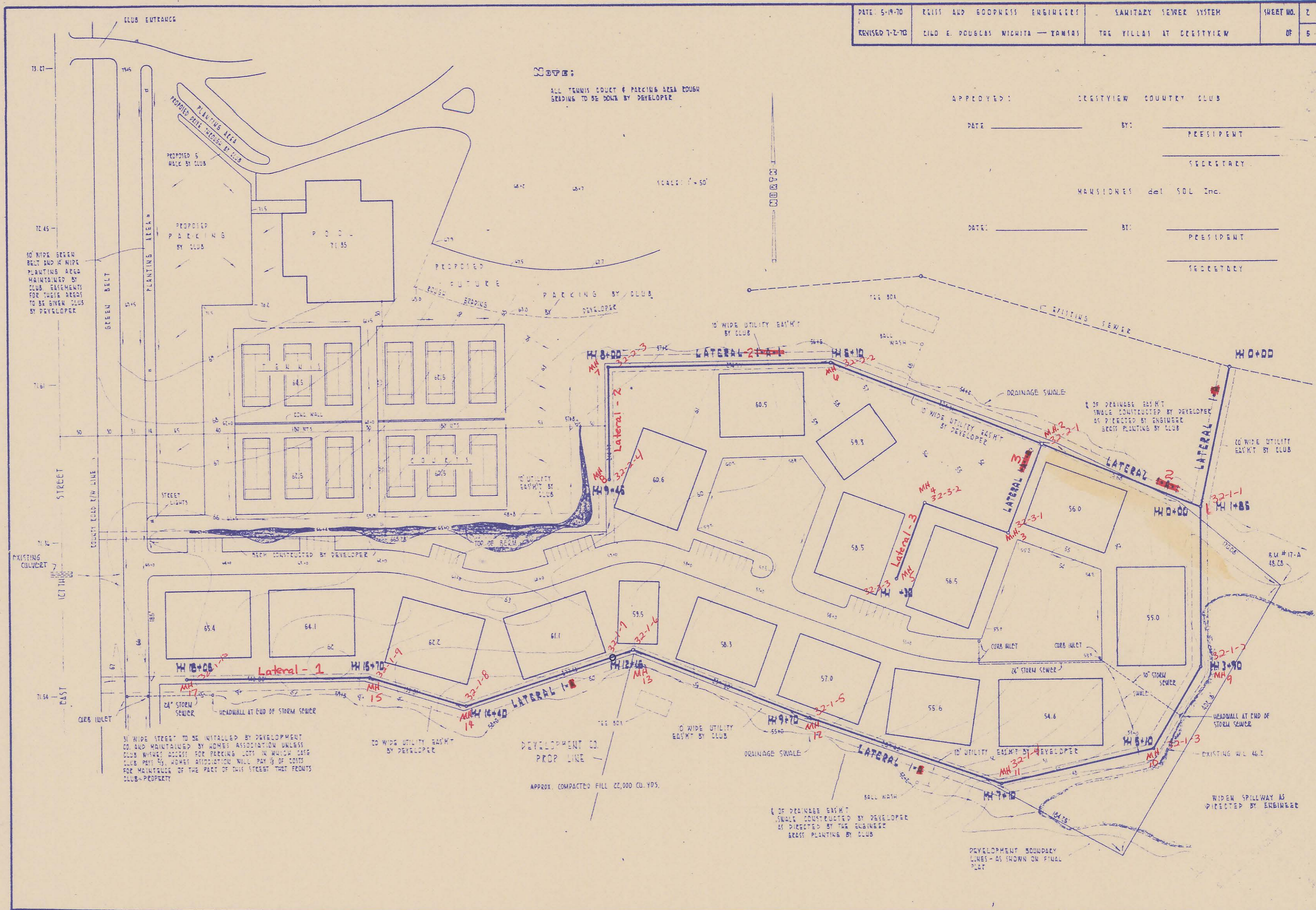
4MC-090

SANITARY SEWER SYSTEM

THE VILLAS AT CRESTVIEW

REISS AND GOODNESS ENGINEERS  
2160 E. DOUGLAS WICHITA - KANSAS  
1970

4mc-090



APPROVED: \_\_\_\_\_ CRESTVIEW COUNTRY CLUB  
 DATE: \_\_\_\_\_ BY: \_\_\_\_\_ PRESIDENT  
 \_\_\_\_\_ SECRETARY  
 MAJESTIC del SOL Inc.  
 DATE: \_\_\_\_\_ BY: \_\_\_\_\_ PRESIDENT  
 \_\_\_\_\_ SECRETARY

NOTES:  
 ALL TRENCH COVERT & PARKING AREA EROSION SEEDING TO BE DONE BY DEVELOPER

10' WIDE GREEN BELT AND 4' WIDE PLANTING AREA MAINTAINED BY CLUB. EASEMENTS FOR THESE AREAS TO BE GIVEN TO CLUB BY DEVELOPER

36' WIDE STREET TO BE INSTALLED BY DEVELOPMENT CO. AND MAINTAINED BY HOME ASSOCIATION UNLESS CLUB WANTS ACCESS FOR PARKING LOTS. IN WHICH CASE CLUB MAY BUY HOME ASSOCIATION W/OUT PAYING COSTS FOR MAINTENANCE OF THE PART OF THIS STREET THAT FRONTS CLUB PROPERTY

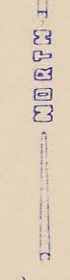
20' WIDE UTILITY EASEMENT BY DEVELOPER

DEVELOPMENT CO. PROP. LINE  
 APPROX. COMPACTED FILL 20,000 CU. YDS.

1/2 OF DRAINAGE BASIN SWALE CONSTRUCTED BY DEVELOPER IS DIRECTED BY THE ENGINEER. STREET PLANTING BY CLUB

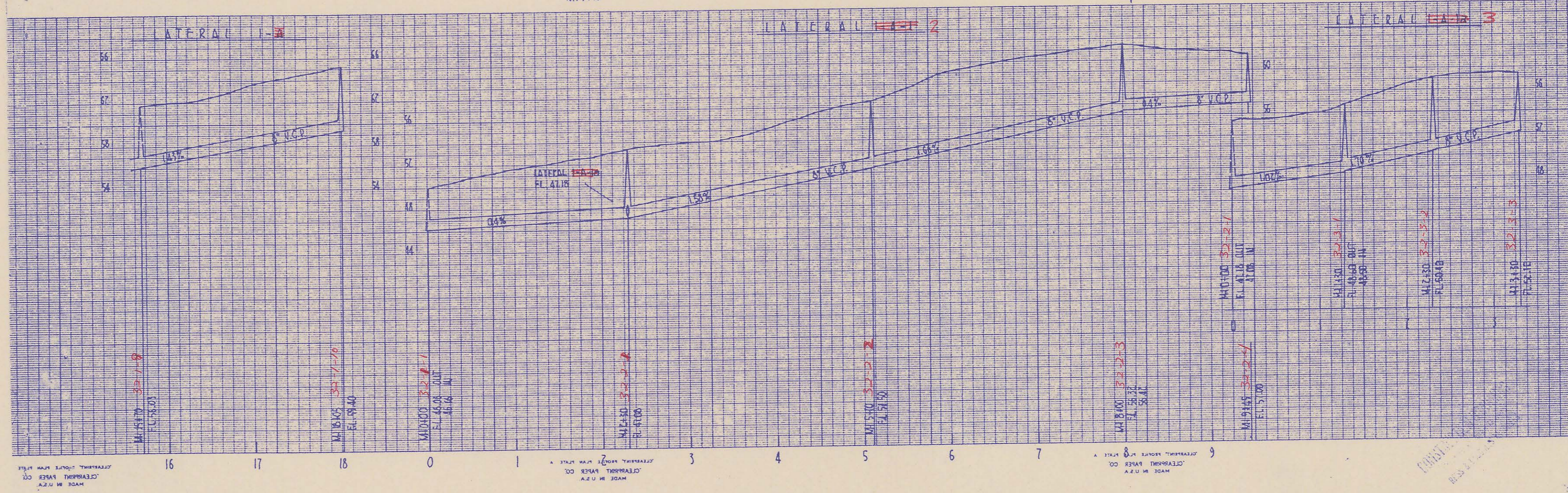
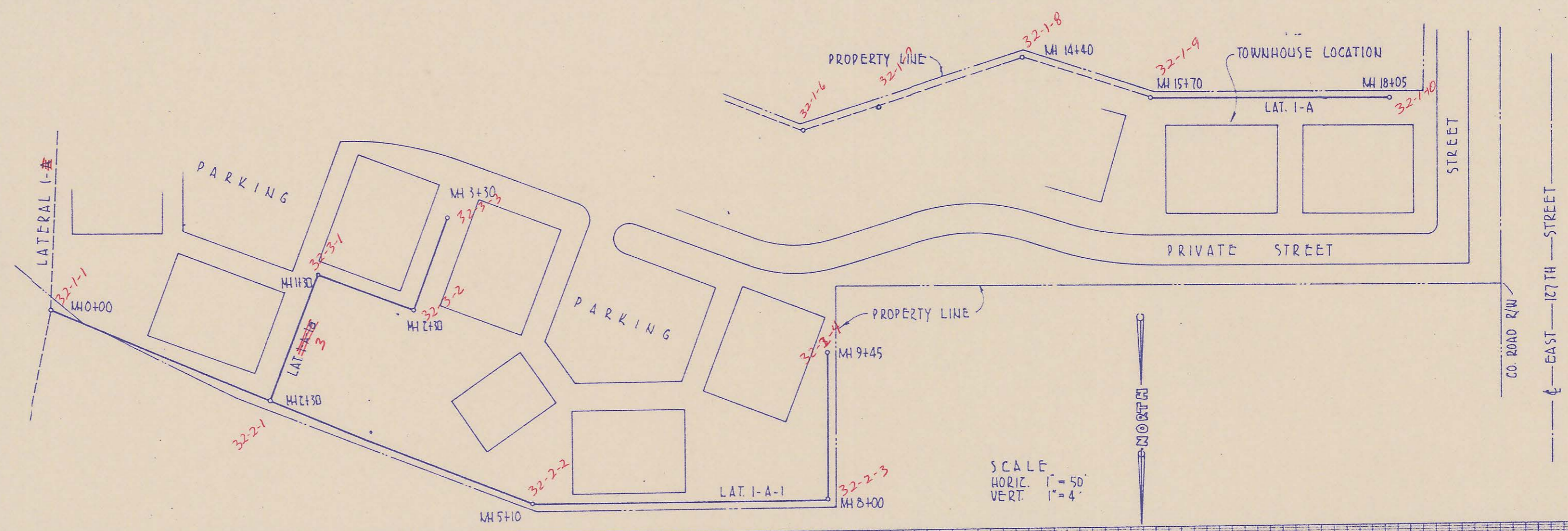
DEVELOPMENT BOUNDARY LINES - AS SHOWN ON FULL PLAN

WIDEN SPILLWAY AS DIRECTED BY ENGINEER



SCALE: 1" = 50'





MADE IN U.S.A.  
GENERAL PAPER CO.  
LITHOGRAPHED AND PRINTED IN U.S.A.

MADE IN U.S.A.  
GENERAL PAPER CO.  
LITHOGRAPHED AND PRINTED IN U.S.A.

MADE IN U.S.A.  
GENERAL PAPER CO.  
LITHOGRAPHED AND PRINTED IN U.S.A.