

4MC-093

PLANS

SANITARY SEWER EXTENSIONS  
CRESTVIEW IMPROVEMENT DISTRICT  
FOUNTAIN HILLS ADDITION

APPROVED DISTRICT
By CITY
Sanitary

**NOTE TO CONTRACTOR**  
 The project will be constructed under  
 the supervision of the City Engineer  
 and compliance with the specifications  
 of the City of Wichita, Kansas  
 shall be the responsibility of the contractor.  
 Working hours shall be from 8:00 a.m. to 5:00 p.m.  
 Monday through Friday.

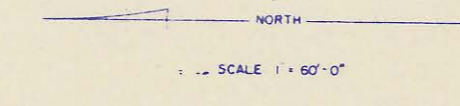
REISS AND GOODNESS ENGINEERS  
 2160 E. DOUGLAS WICHITA, KANSAS  
 1975

DATE	8-1-75
REVISIONS	0-0-75
SHEET NO. 1 OF 5 SHEETS	

4MC-093

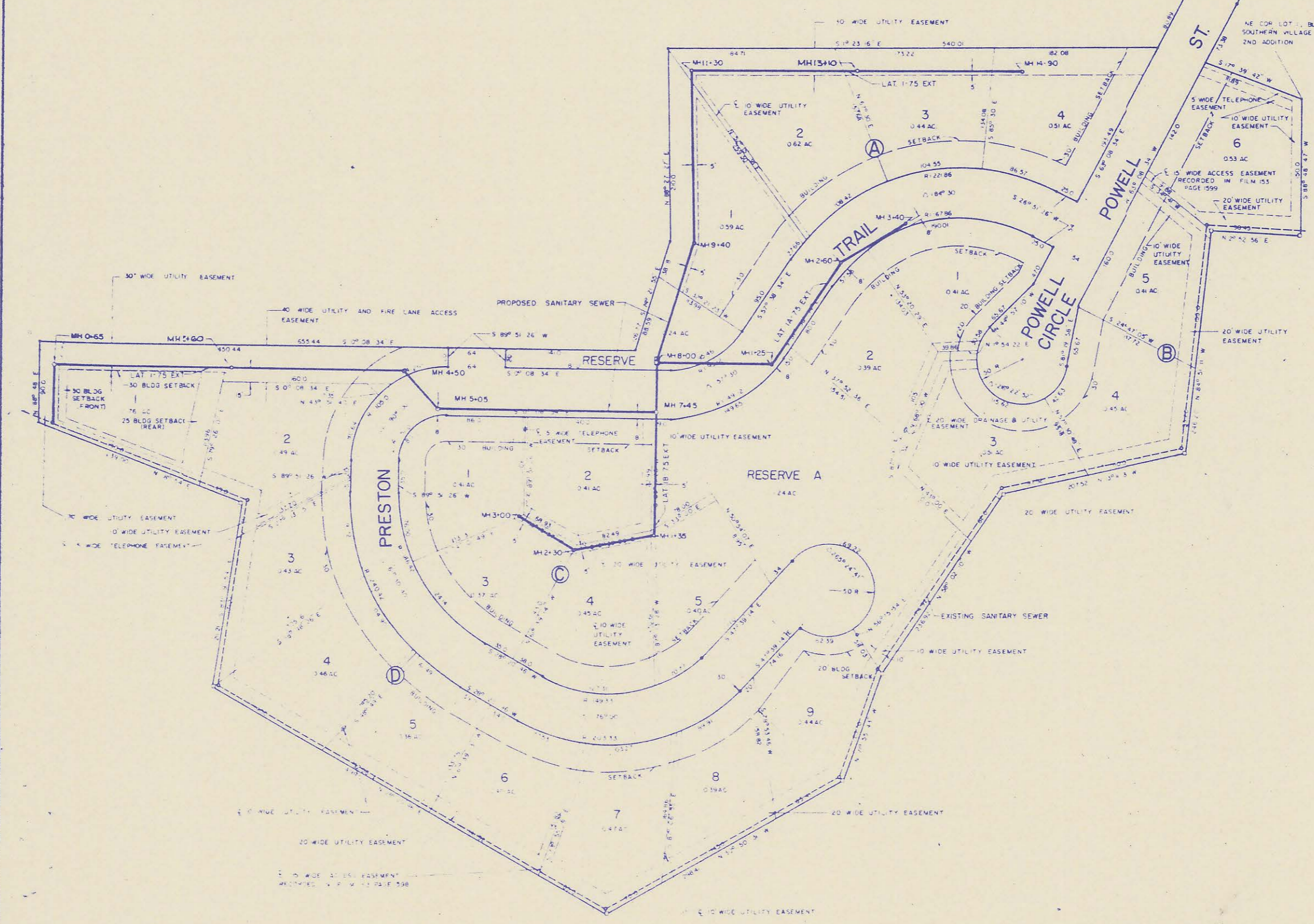
# Fountain Hills Addition

to  
Sedgwick County, Kansas  
Engineer Reiss and Goodness Engineers  
2160 E. Douglas Wichita, Kansas  
1975



**Legend**  
3/4" galvanized iron pipe  
4" x 4" conc. monument w/ brass cap

NOTE: # REBAR SET AT LOT CORNERS UNLESS SHOWN OTHERWISE



STATE OF KANSAS )  
COUNTY OF SEDGWICK ) ss:  
I, Charles M. Goodness, being a duly licensed professional engineer in said county and state, do hereby certify that I have surveyed and platted FOUNTAIN HILLS ADDITION to Sedgwick County, Kansas, described as follows: Beginning 508.19 feet N 88° 08' 47" E of the Southeast Corner of the SW 1/4 of Section 16, T22 N, R 22 W of the 6th P.M., Sedgwick County, Kansas on the south line of said section 16; thence 094.0 feet N 10° 11' 17" E; thence 100.0 feet N 77° 08' 50" W, for an arc distance of 111.57 feet; thence 73.38 feet N 63° 00' 30" W; thence 111.58 feet S 10° 30' 42" W to the Northeast corner of lot 1, Block A Southern Village 2nd Addition; thence 150.0 feet S 48° 48' 21" W to Monument 17; thence 95.55 feet N 21° 52' 54" E to Monument 18; thence 246.20 feet N 86° 51' 17" W to Monument 19; thence 207.32 feet N 15° 11' 21" W to Monument 20; thence 236.92 feet N 55° 02' 10" W to Monument 21; thence 123.70 feet N 15° 55' 43" W to Monument 22; thence 298.41 feet N 30° 50' 31" W to Monument 23; thence 448.0 feet N 28° 30' 46" E to Monument 24; thence 211.21 feet S 83° 19' 30" E to Monument 25; thence 239.00 feet N 18° 34' E; thence 40.0 feet N 88° 48' E; thence 655.00 feet S 0° 08' 34" E; thence 126.77 feet S 74° 21' 55" E; thence 210.0 feet N 88° 27' 27" E; thence 340.01 feet S 1° 23' 16" E; thence 40.89 feet S 63° 08' 34" E; thence on a circular curve with a central angle of 28° 02' 48", a radius of 116.01 feet and the chord extending 84.27 feet S 77° 09' 53" E, for an arc distance of 87.14 feet; thence 84.0 feet N 34° 48' 47" E; thence 748.0 S 1° 11' 11" E to the south line of said Section 16; thence 96.0 feet S 88° 48' 47" W to the point of beginning, containing 16.48 acres more or less. Monuments referred to in this description are taken from the Crestview Country Club Boundary Survey dated November 9, 1969. The accompanying plat is a true and correct exhibit of property surveyed.

Charles M. Goodness, P.E. (SEAL)  
KNOW ALL MEN BY THESE PRESENTS:  
That we, Crestview Development Corporation, a corporation, by its President, James F. Huggan and Vice-President, John F. Sheaks, have caused the land described in the Engineer's certificate to be platted into lots, blocks, reserves and streets. Easements are hereby granted as indicated for utility and drainage construction and maintenance. Easements are hereby dedicated to and for the use of the public. Reserve A is for construction and maintenance of a lake, utilities, drainage, sidewalks, and shelter buildings. Reserve B is for construction and maintenance of utilities and drainage.

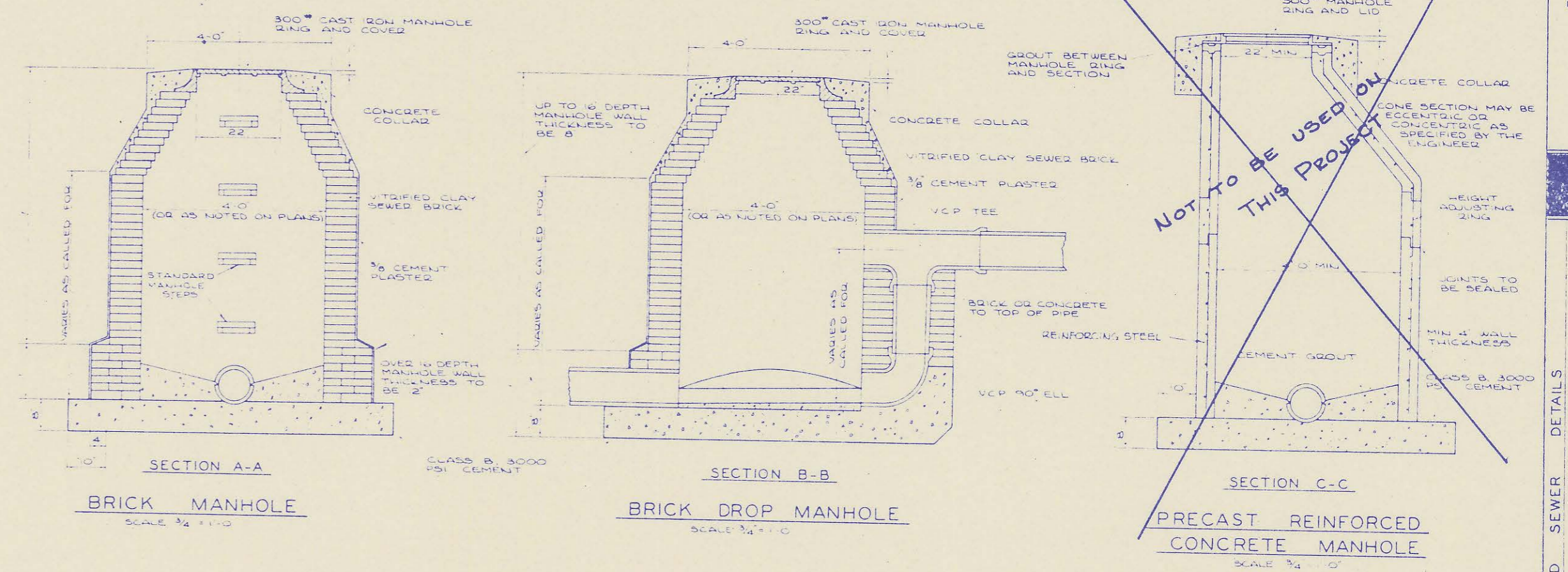
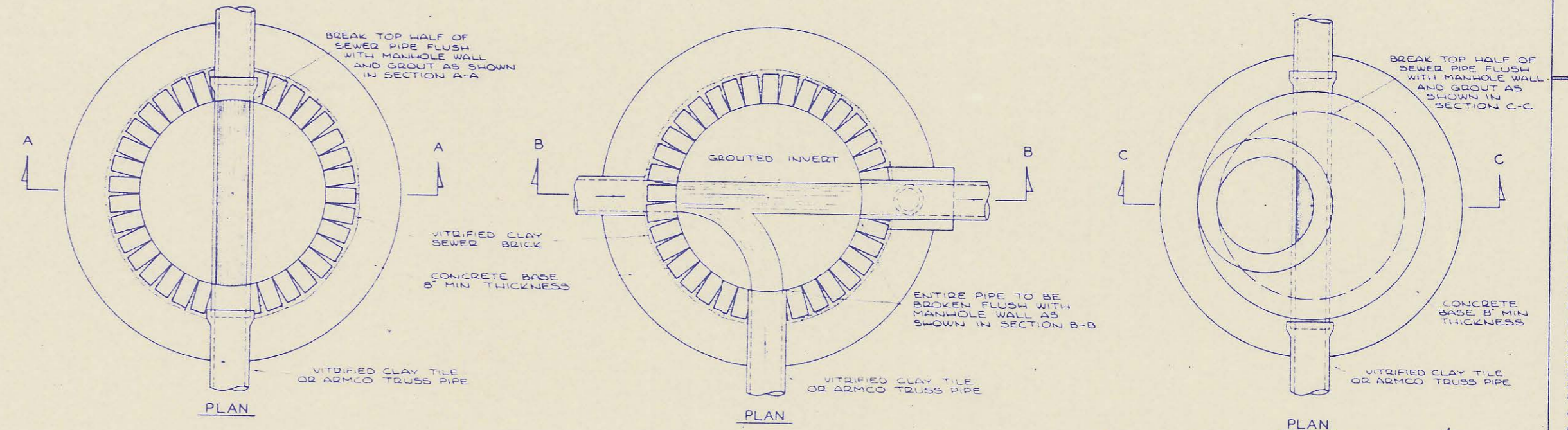
CRESTVIEW DEVELOPMENT CORPORATION  
James F. Huggan, President  
John F. Sheaks, Vice-President  
STATE OF KANSAS )  
COUNTY OF SEDGWICK ) ss:  
As I remember that on this \_\_\_\_\_ day of \_\_\_\_\_, 1975, before me, a notary public in and for said county and state, came Crestview Development Corporation, by its President, James F. Huggan and Vice-President, John F. Sheaks, to me known to be the same persons who executed the foregoing instrument of writing and fully executed the same as their voluntary act and deed and as the act and deed of said corporation. In testimony whereof I have hereunto set my hand and affixed my notarial seal the day and year above written.

My commission expires \_\_\_\_\_  
This plat of FOUNTAIN HILLS ADDITION to Sedgwick County, Kansas has been submitted to and approved by the Wichita-Sedgwick County Metropolitan Area Planning Commission, Wichita, Kansas.  
Dated this \_\_\_\_\_ day of \_\_\_\_\_, 1975.

WICHITA-SEDGWICK COUNTY METROPOLITAN AREA PLANNING COMMISSION  
William P. Kamen, Chairman  
Robert M. Lakin, Secretary  
This plat approval and the indications shown herein accepted by the City Commissioners of the City of Wichita, Kansas, this \_\_\_\_\_ day of \_\_\_\_\_, 1975.  
Wichita, Kansas  
Dated this \_\_\_\_\_ day of \_\_\_\_\_, 1975.  
This plat approval and the indications shown herein accepted by the Board of County Commissioners of Sedgwick County, Kansas, this \_\_\_\_\_ day of \_\_\_\_\_, 1975.  
Sedgwick County, Kansas  
Dated this \_\_\_\_\_ day of \_\_\_\_\_, 1975.  
Entered on Transfer Record this \_\_\_\_\_ day of \_\_\_\_\_, 1975.  
George H. Blawie, County Clerk

STATE OF KANSAS )  
COUNTY OF SEDGWICK ) ss:  
This instrument is a true and correct copy of the original as filed in the Register of Deeds Office in \_\_\_\_\_, Kansas, on the \_\_\_\_\_ day of \_\_\_\_\_, 1975.  
Wichita, Kansas  
Notary Public



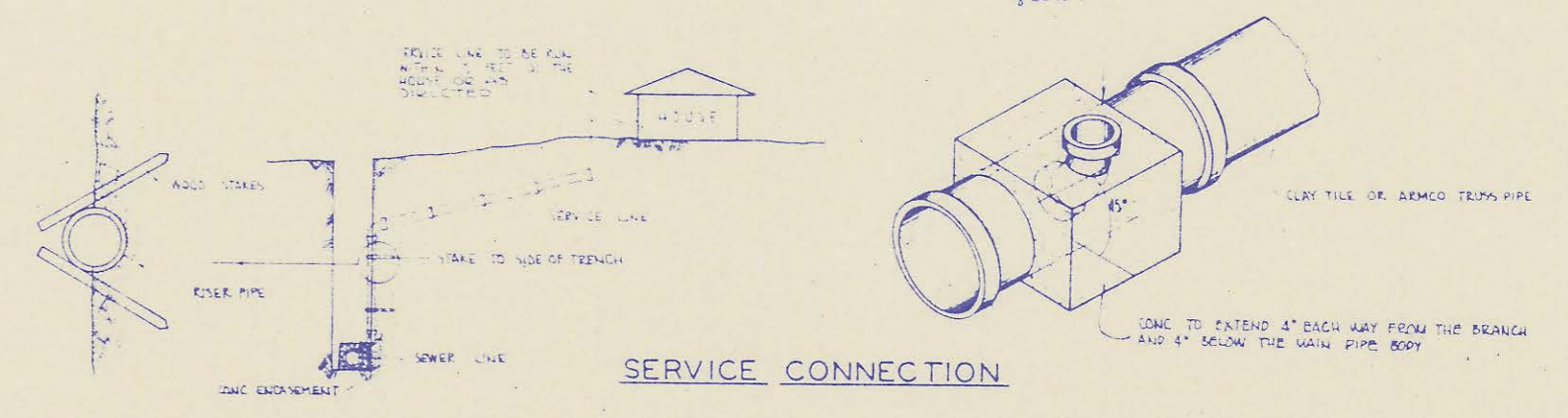


SECTION A-A  
BRICK MANHOLE  
SCALE 3/4" = 1'-0"

SECTION B-B  
BRICK DROP MANHOLE  
SCALE 3/4" = 1'-0"

SECTION C-C  
~~PRECAST REINFORCED  
CONCRETE MANHOLE~~  
SCALE 3/4" = 1'-0"

**NOTE**  
THIS STANDARD SHEET SHOWS THE TYPES OF CONSTRUCTION FOR THE TYPES SHOWN WHICH WILL NORMALLY BE ENCOUNTERED ON A SEWERAGE PROJECT UNDER CONDITIONS OR TYPES OF CONSTRUCTION ARE SHOWN ON OTHER DRAWINGS AND/OR CALLED OUT IN THE SPECIFICATIONS.



SERVICE CONNECTION