

4MC-094

PLANS

SANITARY SEWER EXTENSIONS

THE VILLAS

AT CRESTVIEW 2ND ADDITION

Reiss and Goodness Engineers
2160 E. Douglas Wichita, Kansas
1974

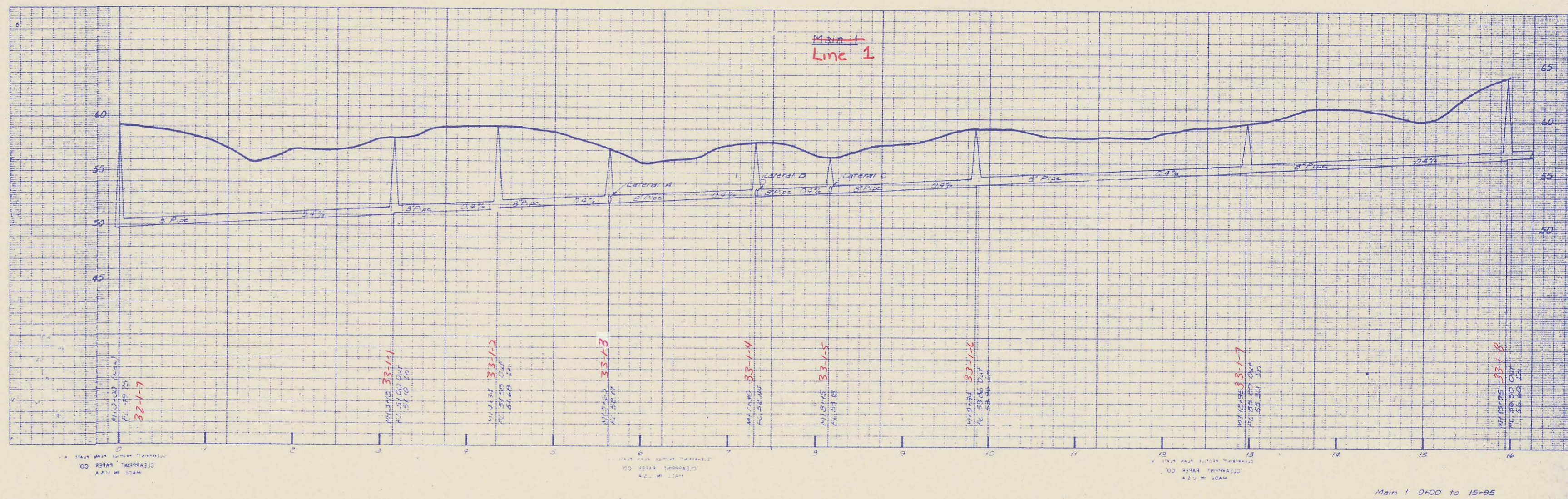
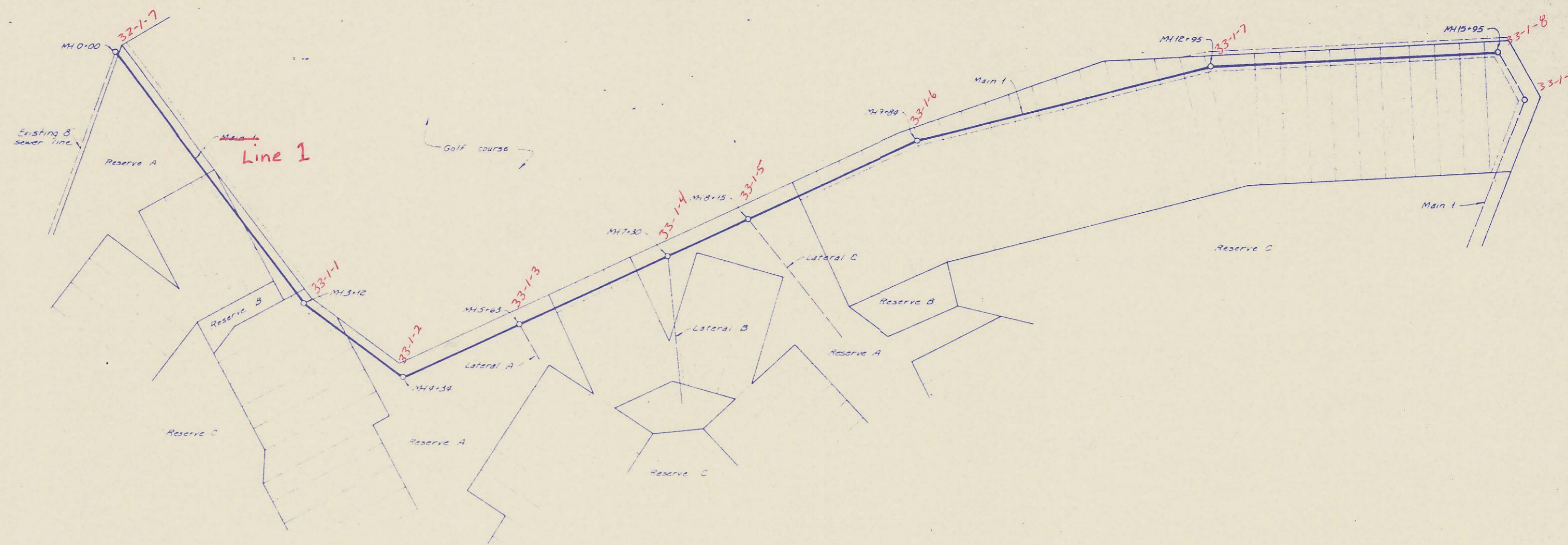
AS CONSTRUCTED

REISS & GOODNESS ENGINEERS
2160 E. DOUGLAS ST.
WICHITA, KANSAS 67214

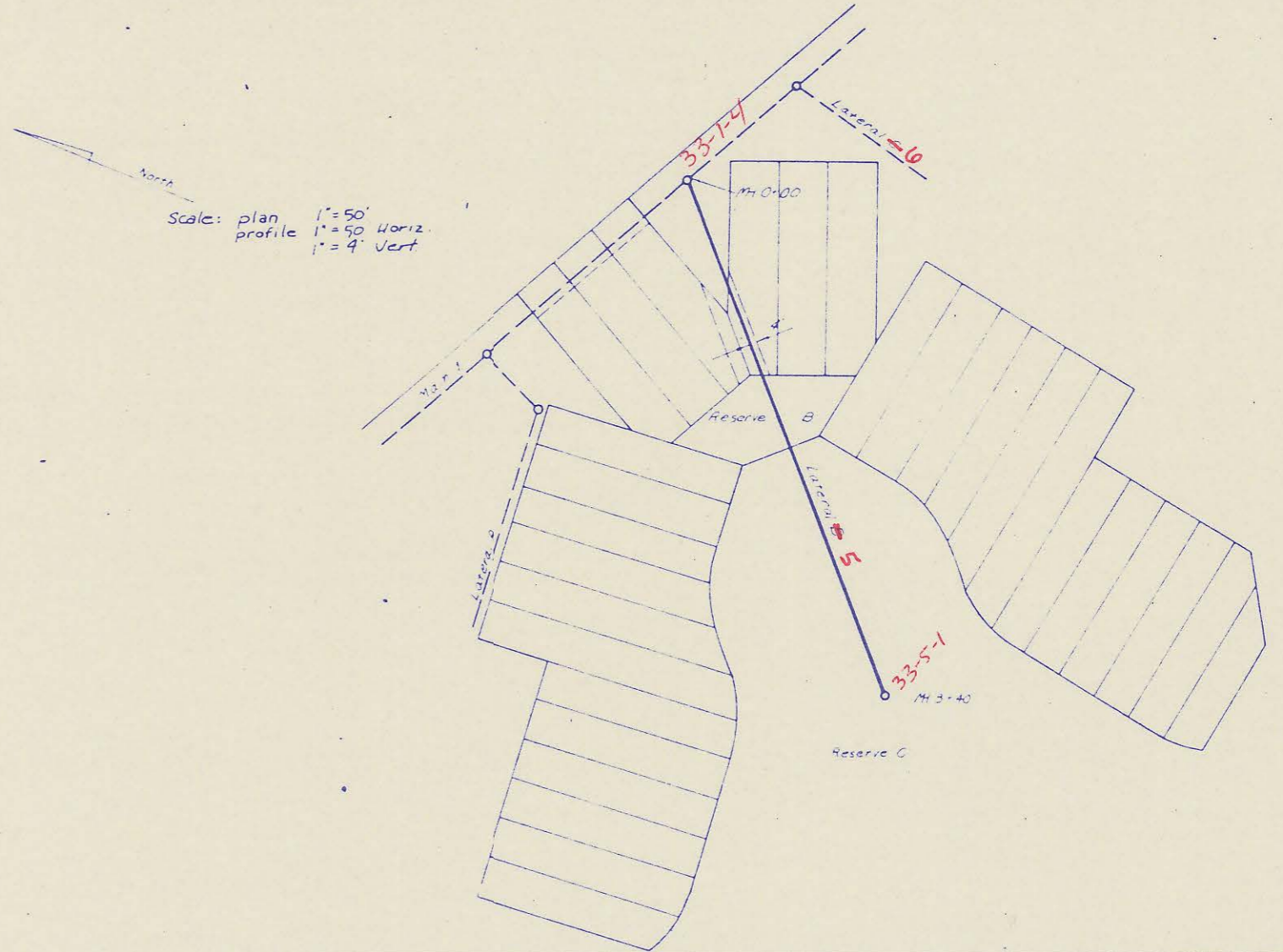
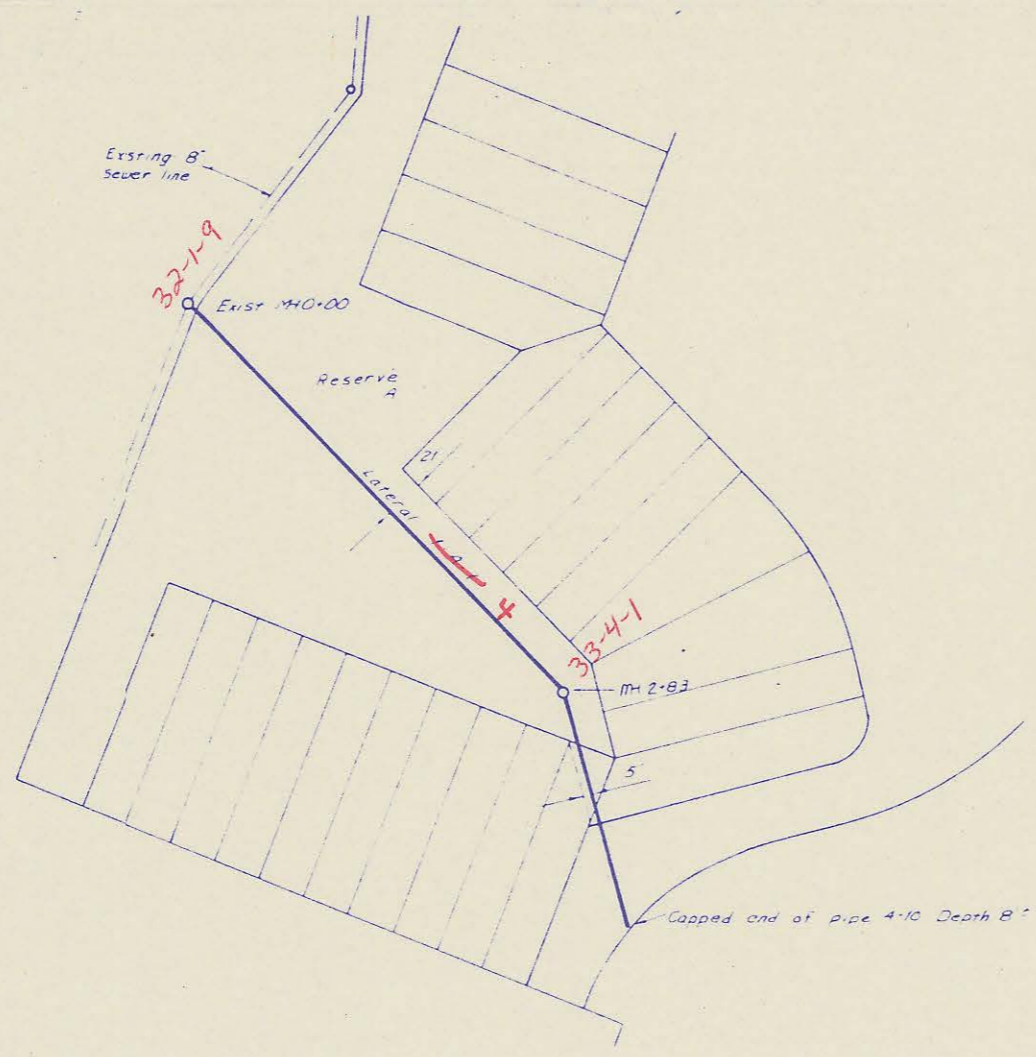
Sanitary Sewer Extensions
The Villas
of Crestview 2nd Addition

PROJECT: 4MC-094
DATE: 10-6-74
SHEET NO. 1
OF 6 SHEETS

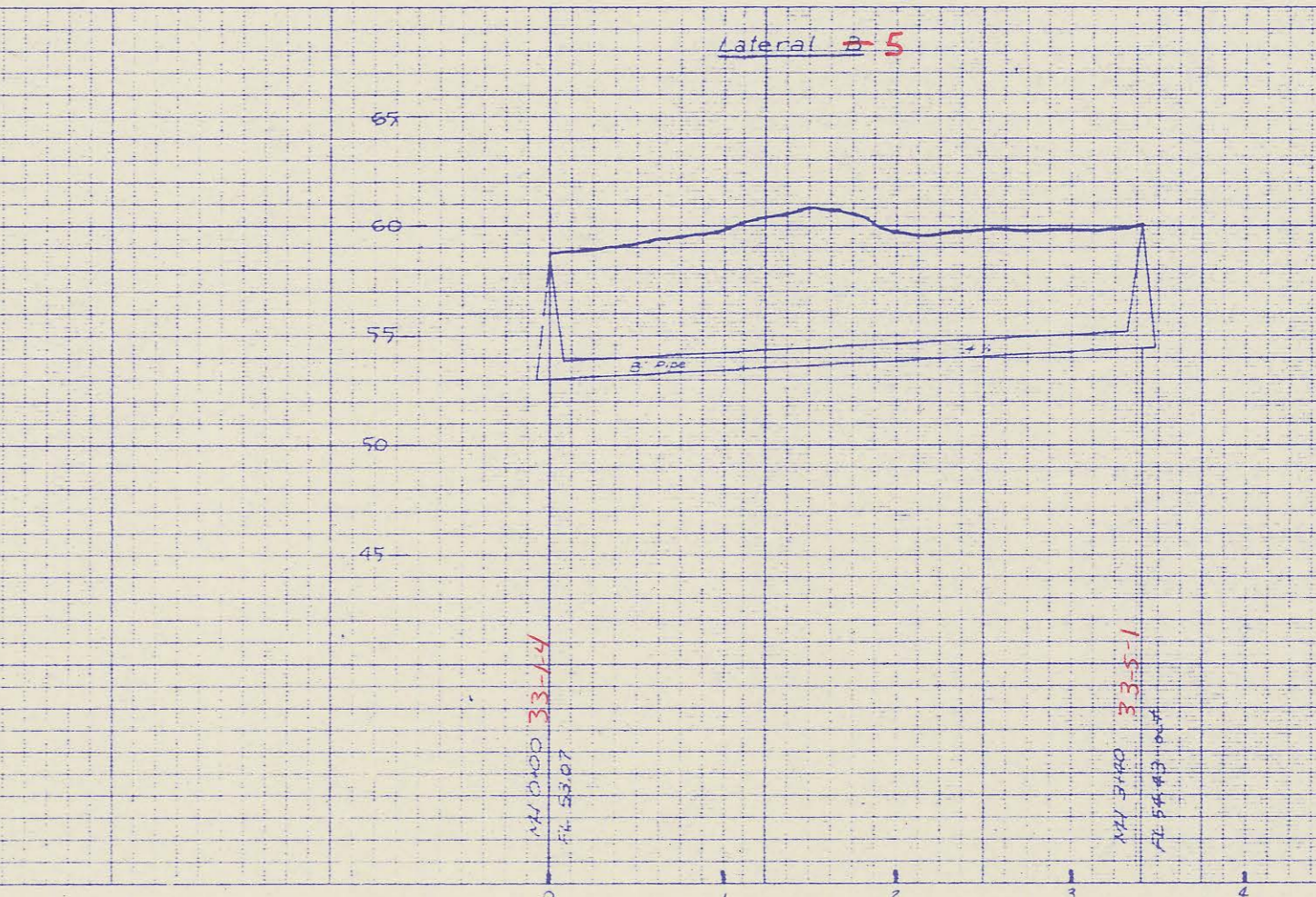
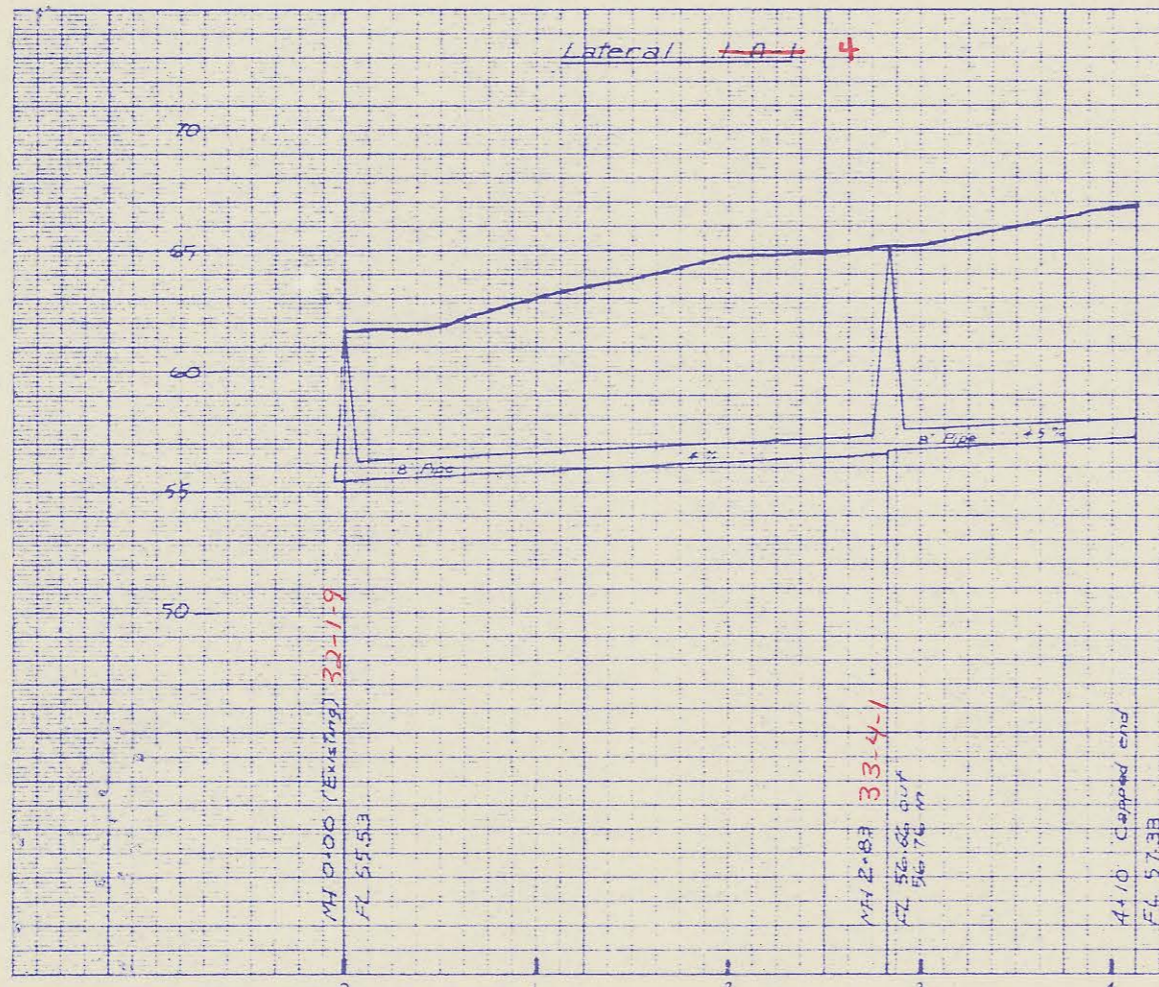
4MC-094



Main 1 0+00 to 15+95



Scale: plan 1"=50'
 profile 1"=50' Horiz.
 1"=4' Vert.



Lateral 1-A-1
 Lateral D

AS CONSTRUCTED
 SANITARY SEWER EXTENSIONS
 MISSOURI ENGINEERS & ARCHITECTS
 1111 N. 10th St., St. Louis, Mo. 63103
 Phone: 434-1111
 www.mesa.com

