

# STORM SEWER IMPROVEMENTS

TO SERVE

## CLUB CARWASH

141 S. ROCK RD.

CITY OF WICHITA, KANSAS

GARY JANZEN, P.E. CITY ENGINEER

PROJECT NUMBER

2020-659 PPD (133119)

AS BUILTS

John J Schuller  
5/24/21

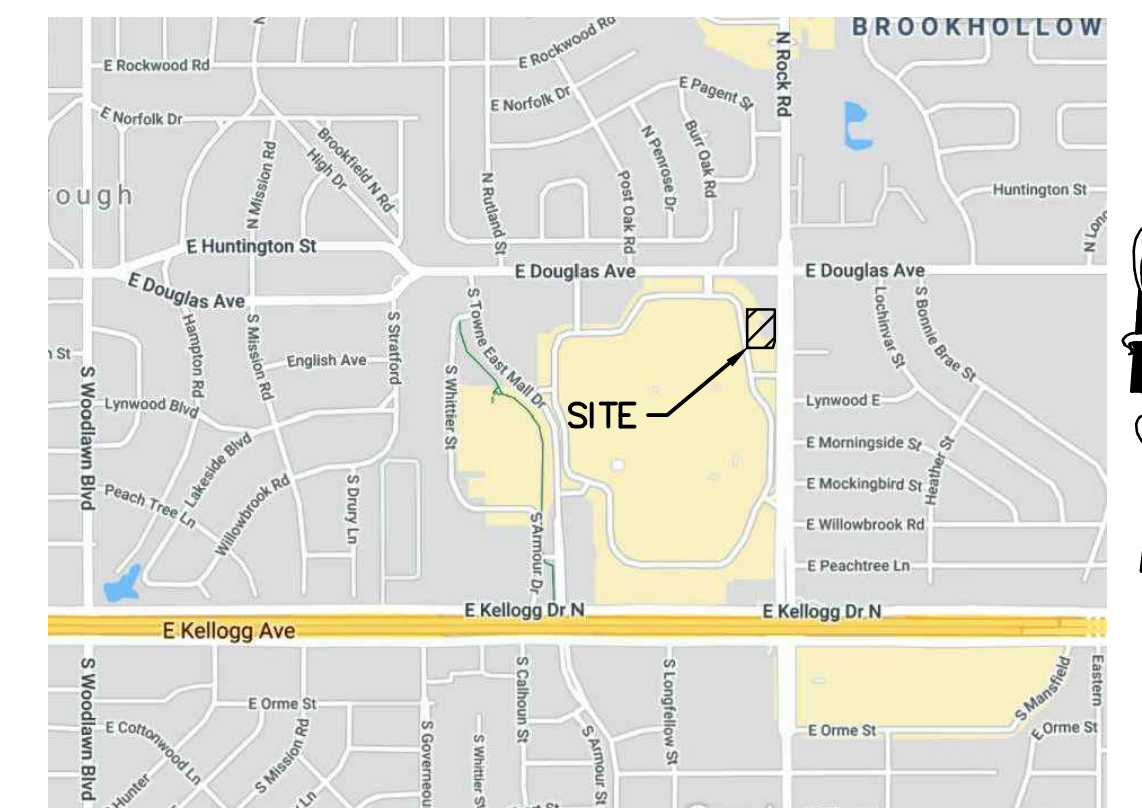
**KEMILLER**  
ENGINEERING PA

117 E. Lewis,  
Wichita, KS 67202 (316)264-0242

SHEET INDEX

SITE PLAN	1
PLAN AND PROFILE	2
EROSION CONTROL PLAN	3
DETAILS/SPECIFIC/EROSION CONTROL	4

SHEET



VICINITY MAP  
NO SCALE

Contractor: Ewertz Excavation

**STORMWATER CERTIFICATION:**

NEW DEVELOPMENT OR ~~REDEVELOPMENT~~ (CIRCLE ONE)

STORMWATER PERMIT # \_\_\_\_\_

NOI PERMIT # S-AR94-1675/KSR116073

THESE CONSTRUCTION PLANS WERE PREPARED IN ACCORDANCE WITH THE CURRENT STORMWATER MANAGEMENT REGULATIONS AS SET FORTH IN THE CITY OF WICHITA'S STORMWATER MANAGEMENT ORDINANCE 16-32 AND THE POLICES/ORDINANCES PRESENTED IN THE WICHITA/SEDGWICK COUNTY STORMWATER MANUAL.

SITE AREA (ACRES) = 1.27

DISTURBED AREA (ACRES) = 1.23

WATER QUALITY TREATMENT: OFFSITE BMP

DOWNSTREAM CHANNEL PROTECTION: NONE

DETENTION: NONE

THE BMP USED FOR THIS DEVELOPMENT IS PROGRAM

**NOVEMBER, 2020**

REVISED DECEMBER 9, 2020



- CIVIL ENGINEERING
- LAND SURVEYING
- ARCHITECTURE
- SITE DEVELOPMENT
- MASTER PLANNING
- GENERAL CONSULTING

8 EAST MAIN STREET, WENTZVILLE, MISSOURI 63385

TELEPHONE (636) 332-4574

FAX (636) 327-0760

E-MAIL wentmail@cochraneng.com

APPROVED AS NOTED  
BY WICHITA PUBLIC WORKS ENGINEERING  
& STORMWATER DIVISION

ENGINEERING SHAWN MELLIES 12-22-2020

STORMWATER JOSEPH HICKLE 12-22-2020

**NOTE TO CONTRACTORS**

INSPECTION AND TESTING FOR THIS PROJECT IS TO BE PROVIDED BY A LICENSED CONSULTING ENGINEERING FIRM UNDER CONTRACT WITH THE OWNER/DEVELOPER. SAID INSPECTION TO BE IN ACCORDANCE WITH THE CITY OF WICHITA STANDARD CONSTRUCTION ENGINEERING PRACTICES AND CERTIFIED BY A LICENSED PROFESSIONAL ENGINEER IN THE STATE OF KANSAS. NO WORK SHALL BE PERFORMED BY THE CONTRACTOR WITHOUT SUCH INSPECTION NOR SHALL ANY WORK BE COMMENCED WITHOUT WRITTEN AUTHORIZATION BY CITY ENGINEERING. ALL CONSTRUCTION AND MATERIALS SHALL COMPLY WITH THE CURRENT CITY OF WICHITA SPECIFICATIONS AND STANDARDS AND SPECIAL PROVISIONS (ON FILE AND AVAILABLE AT Wichita.gov). AN APPROVED COPY OF THESE PLANS SIGNED BY CITY STAFF ARE REQUIRED ON-SITE.

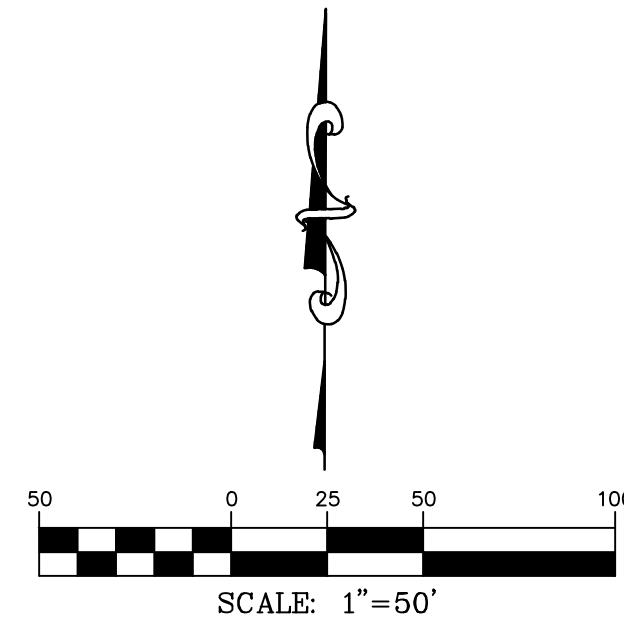
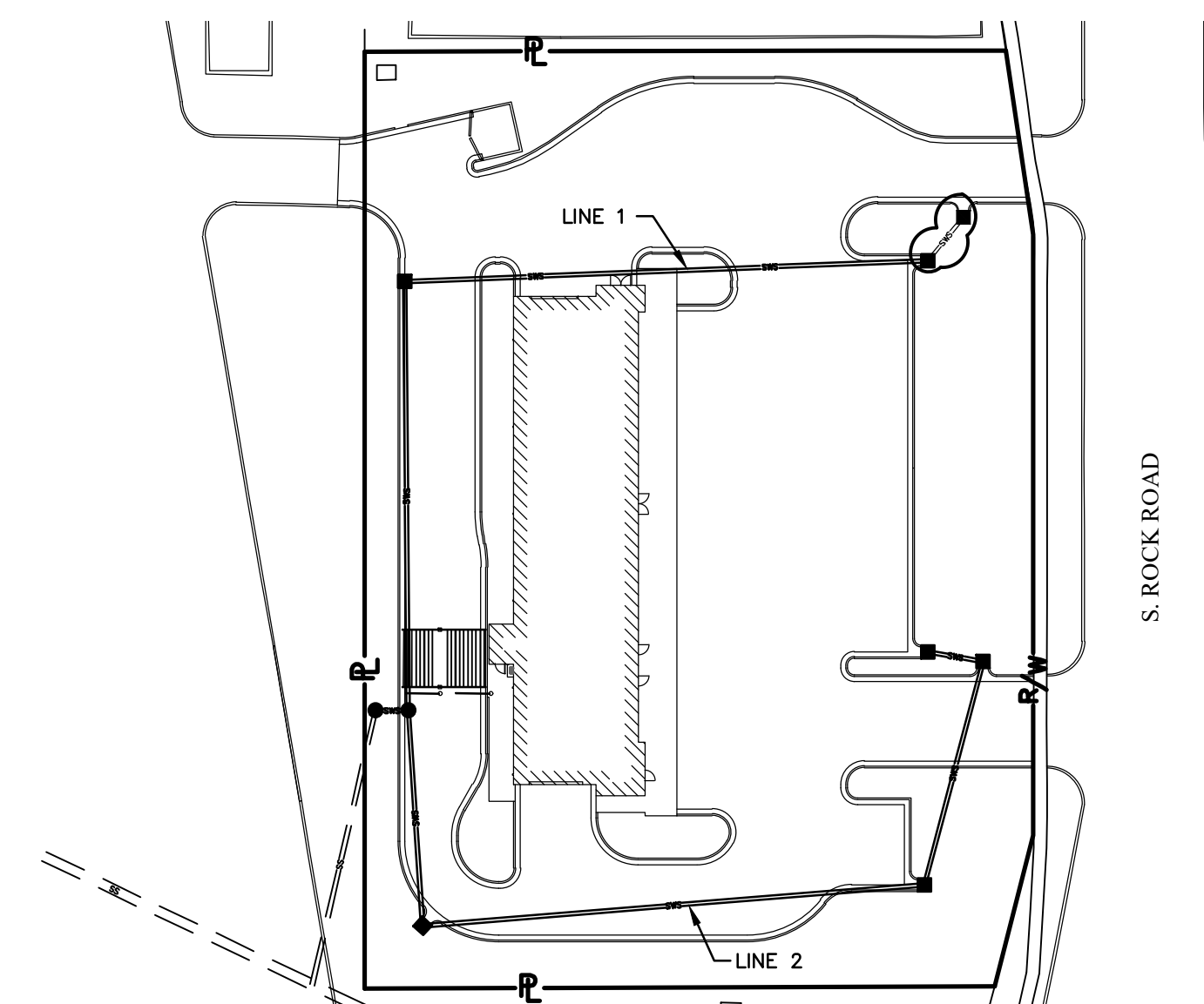


**GENERAL NOTES**

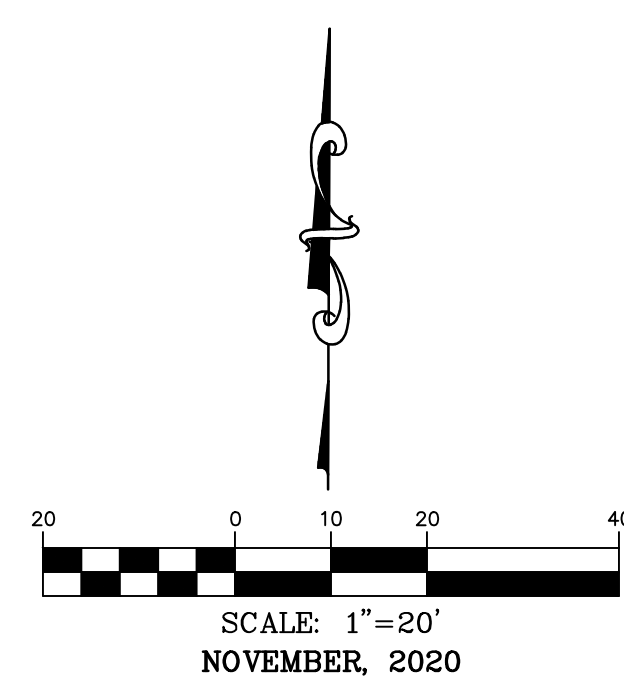
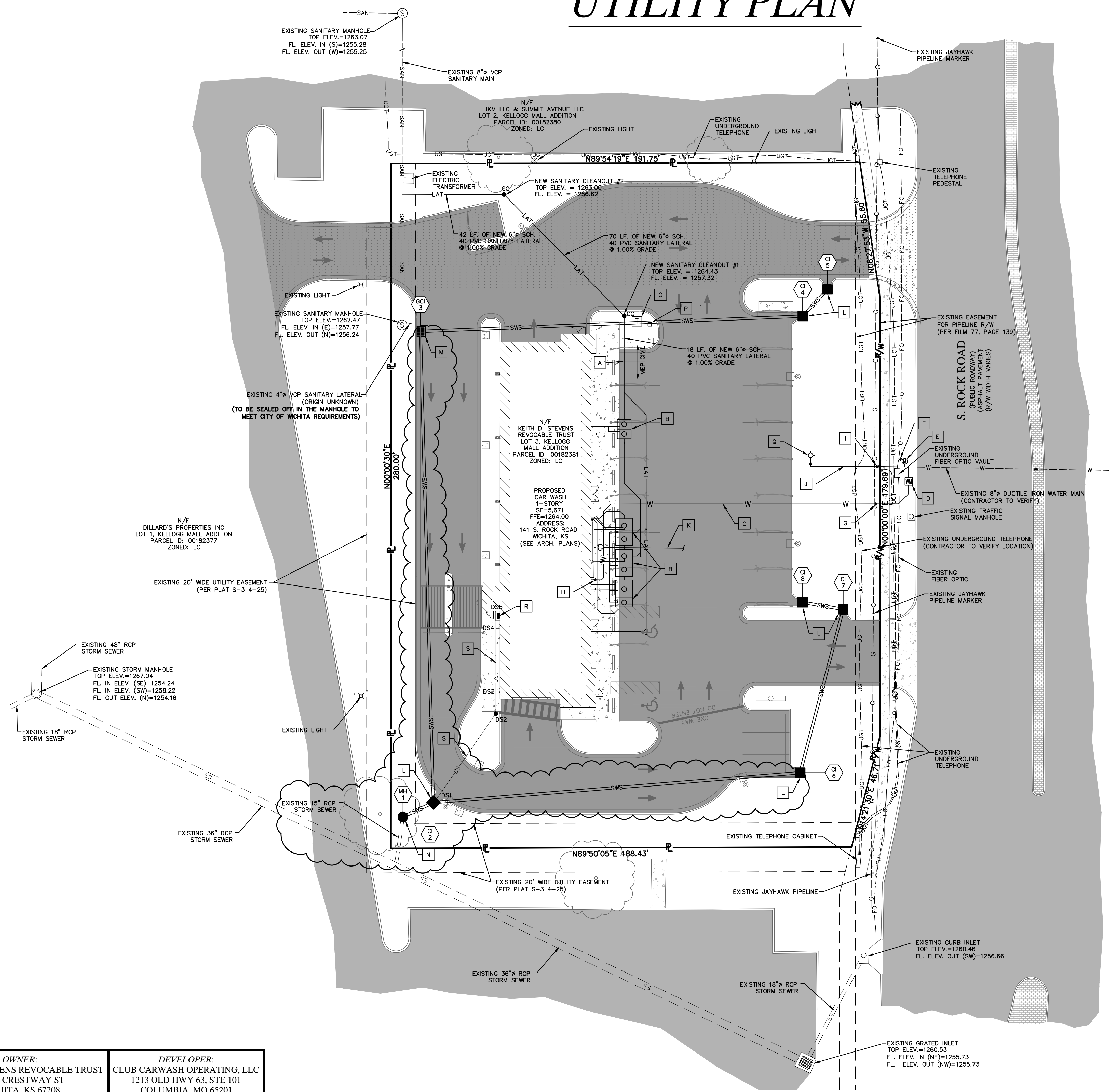
- THE CONTRACTOR SHALL COMPLY WITH ALL APPLICABLE SAFETY REGULATIONS. ALL CONSTRUCTION SHALL BE COMPLETED FOLLOWING CURRENT CITY STANDARDS SPECIFICATIONS AND SPECIAL PROVISIONS.
- CONTRACTOR WILL BE REQUIRED TO PROVIDE NOTICE TO UTILITY COMPANIES A MINIMUM OF SEVENTY-TWO (72) HOURS PRIOR TO ANY EXCAVATION, AS FOLLOWS:  
  
KANSAS ONE-CALL 687-2470  
  
THE CONTRACTOR MUST NOTIFY THE FOLLOWING IN CASE OF AN EMERGENCY:  
  
AT&T 1-800-246-8464  
BLACK HILLS ENERGY 1-800-694-8989  
CITY OF WICHITA WATER & SEWER 1-316-219-8921  
CITY OF WICHITA STORMWATER 1-316-268-4090  
CITY OF WICHITA TRAFFIC 1-316-268-4034  
COX COMMUNICATIONS 1-888-249-3530  
KANSAS GAS SERVICE 1-888-482-4950  
EVERGY 1-800-544-4857
- UTILITY SERVICE LINES, POLES, ETC. ARE TO BE ADJUSTED AS NECESSARY BY OTHERS PRIOR TO CONSTRUCTION UNLESS THE PLANS SPECIFICALLY CALL FOR THEIR ADJUSTMENT BY THE CONTRACTOR OR UNLESS THE PLANS SPECIFICALLY IDENTIFY A UTILITY TO BE ADJUSTED BY ITS OWNER DURING CONSTRUCTION. EXISTING UTILITIES AND THEIR LOCATION, AS SHOWN ON THE PLANS, REPRESENT THE BEST INFORMATION OBTAINABLE FOR DESIGN. THE CONTRACTOR WILL BE REQUIRED TO WORK AROUND EXISTING UTILITIES WITHIN THE RIGHT-OF-WAY WHICH DO NOT CONFLICT WITH PROPOSED CONSTRUCTION.
- RUBBLE FROM THE REMOVAL OF MISCELLANEOUS STRUCTURES AND EXCESS EXCAVATION WHICH IS TO BE WASTED SHALL BE DISPOSED OF ON SITES TO BE PROVIDED BY THE CONTRACTOR. THESE SITES SHALL BE APPROVED BY THE ENGINEER AS TO SUITABILITY, APPEARANCE AND SITE LOCATION. LOCATIONS, IN THE OPINION OF THE ENGINEER, THAT WILL LEAVE AN UNSIGHTLY APPEARANCE WILL NOT BE APPROVED. ALL DISPOSAL APPROVED BY THE KANSAS DEPARTMENT OF HEALTH AND ENVIRONMENT. MATERIAL EITHER STOCKPILED OR DISPOSED OF IN A FLOOD PLAIN WILL REQUIRE A KANSAS STATE BOARD OF AGRICULTURE PERMIT. ANY MATERIAL DUMPED IN WATERS OF THE UNITED STATES OR WETLANDS IS SUBJECT TO U.S. CORPS OF ENGINEERS PERMITTING REGULATIONS. ANY MATERIAL BURIED OR STOCKPILED BEYOND APPROVED CONSTRUCTION LIMITS WILL REQUIRE ADDITIONAL ARCHAEOLOGICAL INVESTIGATIONS UNLESS BURIED IN A PREVIOUSLY APPROVED BORROW LOCATION.
- TREES AND SHRUBS IN PUBLIC RIGHT-OF-WAY WHICH ARE IN DIRECT CONFLICT WITH PROPOSED NEW CONSTRUCTION SHALL BE REMOVED BY THE CONTRACTOR WITH THE CITY ENGINEER'S APPROVAL. TREES AND SHRUBS WHICH ARE NOT IN DIRECT CONFLICT WITH PROPOSED NEW CONSTRUCTION SHALL BE SAVED AND PROTECTED FROM DAMAGE.
- THE CONTRACTOR SHALL GIVE ALL PROPERTY OWNERS AND/OR TENANTS OF DEVELOPED PROPERTY ADJUTING THE CONSTRUCTION OF THIS PROJECT A MINIMUM OF TEN (10) DAYS NOTICE PRIOR TO START OF CONSTRUCTION.
- THE CONTRACTOR SHALL BE RESPONSIBLE FOR PRESERVING PROPERTY IRONS. THE CONTRACTOR WILL BE REQUIRED TO RE-ESTABLISH ANY PROPERTY IRONS WHICH ARE DAMAGED OR DESTROYED BY HIS CONSTRUCTION OPERATIONS. SUCH IRONS SHALL BE RE-ESTABLISHED BY A LICENSED LAND SURVEYOR IN ACCORDANCE WITH STATE LAWS.
- THE ENGINEERING DIVISION SHALL FIELD LOCATE WATER VALVES ONE TIME DURING CONSTRUCTION WHEN REQUESTED BY THE CONTRACTOR. IT SHALL BE THE CONTRACTOR'S RESPONSIBILITY TO PRESERVE SUCH FIELD LOCATIONS DURING THE CONSTRUCTION PROCESS. WATER VALVES, VALVE BOXES OR FIRE HYDRANTS DAMAGED DURING CONSTRUCTION SHALL BE REPAIRED BY CONTRACTOR AT HIS OWN EXPENSE. VALVE BOXES AND WATER METERS WITHIN THE PROJECT LIMITS SHALL BE ADJUSTED TO MATCH FINAL GRADES BY THE CONTRACTOR.
- THE CONTRACTOR SHALL NOTIFY THE INSPECTING ENGINEER AND TOM MASON AT 316-268-4574 WITH THE CITY OF WICHITA WITH THE ANTICIPATED CONSTRUCTION START DATE AND NOTIFY THEM OF PROJECT COMPLETION. STAKING AND INSPECTION OF THIS PROJECT WILL BE THE RESPONSIBILITY OF THE CONTRACTOR.
- IF TRAFFIC WILL BE IMPACTED BY CONSTRUCTION, A TRAFFIC CONTROL PLAN MUST BE SUBMITTED AND APPROVED BY THE CITY TRAFFIC ENGINEER, MIKE ARMOUR AT traffic@wichita.gov BEFORE CONSTRUCTION CAN BEGIN. THE CONTRACTOR SHALL BE RESPONSIBLE FOR ALL TRAFFIC CONTROL MEASURES TO FACILITATE CONSTRUCTION. ALL CONSTRUCTION ZONE MARKINGS AND SIGNAGE SHALL CONFORM TO THE LATEST VERSION OF THE MANUAL ON UNIFORM TRAFFIC CONTROL DEVICES (MUTCD) AS PUBLISHED BY THE US DEPT. OF TRANSPORTATION, FEDERAL HIGHWAY ADMINISTRATION. ALL COSTS ASSOCIATED WITH CONSTRUCTION MARKINGS AND SIGNAGE SHALL BE THE CONTRACTOR'S RESPONSIBILITY.
- ALL ELEVATIONS SHOWN ARE NAVD 88.
- ALL AREAS DISTURBED DURING CONSTRUCTION THAT WILL NOT BE UNDER PROPOSED PAVEMENT SHALL BE RESTORED TO MATCH EXISTING CONDITIONS.
- ANY SIDEWALK, DRIVE APPROACH, CURB, OR STREET PAVEMENT REMOVED TO CONSTRUCT PROJECT MUST HAVE A PAVEMENT CUT PERMIT AND BE REPLACED BY THE CITY CONTRACTOR. PERMITS CAN BE OBTAINED BY CALLING 316-268-4501 OR 316-268-4480.
- CITY MAINTENANCE OF STORM SEWER ENDS AT THE LAST STRUCTURE IN THE EASEMENT OR RIGHT-OF-WAY.
- A PORTION OF EXCESS EXCAVATED MATERIAL SHALL BE MOUNDED AROUND MANHOLES WHICH EXTEND MORE THAN ONE (1) FOOT ABOVE THE EXISTING GROUND. SUCH MOUND SHALL BE CONSTRUCTED WITH NEW DEVELOPMENT A SIX (6) FOOT DIAMETER FLAT TOP WITH 4 TO 1 SIDE SLOPES DOWN TO THE ORIGINAL GROUND. THE ELEVATION OF THE FLAT TOP OF THE MOUND SHALL BE 0.4 FOOT BELOW THE TOP TO THE MANHOLE.
- CONTRACTOR SHALL LIMIT THE EXTENT OF TRENCH OPENINGS OVERNIGHT AND WEEKENDS TO LESS THAN 50 FEET.
- THE INSPECTING FIRM SHALL SUBMIT TO THE CITY STORMWATER MAINTENANCE DIVISION A DIGITAL COPY OF THE CCTV INSPECTION OF THE CONDUITS AND STRUCTURES FOLLOWING CONSTRUCTION. THE DIGITAL FILE FORMATION SHALL BE COMPATIBLE WITH THE CITY INPUT TEMPLATE. A COPY OF THE TEMPLATE IS AVAILABLE UPON REQUEST AT 316-268-4090.
- THE CONTRACTOR SHALL PROTECT FROM DAMAGE AND SUPPORT EXISTING UTILITIES THROUGH CONSTRUCTION AS APPROVED BY THE UTILITY OWNER AND THE ENGINEER AT THE CONTRACTOR'S EXPENSE.

**BENCHMARKS**

BM#: SQUARE CUT ON THE TOP OF THE NORTHERNMOST CURB OF A PARKING LOT LOCATED APPROXIMATELY 25 FEET SOUTH OF THE SOUTHERNMOST PROPERTY LINE AND 79' WEST OF THE WEST EDGE OF S ROCK ROAD.  
ELEV. = 1262.80 (NAVD 88)/(LOCAL)



# UTILITY PLAN



## UTILITY LEGEND

- A REFER TO MEP PLANS FOR CONTINUATION OF SANITARY SEWER CONNECTION TO THE BUILDING. SEE DETAIL FOR SANITARY LATERAL ON SHEET C10. FL. ELEV. = 1257.50.
- B NEW SANITARY SEWER LATERAL AND GREASE INTERCEPTORS. SEE MEP PLANS.
- C NEW 4" 900 PVC WATER SERVICE LINE.
- D NEW 2" WATER METER. SEE DETAIL, SHEET C11.
- E NEW 1" IRRIGATION METER.
- F NEW IRRIGATION LINE TO IRRIGATION SYSTEM.
- G NEW 2" X 4" INCREASER.
- H NEW 4" X 3" REDUCER.
- I NEW 8" WATER VALVE.
- J NEW 8" DUCTILE IRON WATER LINE.
- K NEW GAS LINE. CONTRACTOR SHALL COORDINATE WITH MEP AND UTILITY PROVIDER.
- L NEW STORM CURB INLET. SEE DETAIL, SHEET C10.
- M NEW GRATED INLET WITH SIDE INTAKE. SEE DETAIL, SHEET C10.
- N NEW STORM MANHOLE. SEE DETAIL, SHEET C10.
- O NEW TRANSFORMER PAD, CONTRACTOR SHALL COORDINATE WITH MEP AND UTILITY PROVIDER.
- P NEW TELEPHONE PEDESTAL. SEE MEP PLANS.
- Q NEW FIRE HYDRANT. SEE DETAIL, SHEET C11.
- R NEW AC UNIT. SEE MEP PLANS.
- S NEW 8" SDR 35 PVC DOWNSPOUT COLLECTOR. SEE DETAIL, SHEET C10.

**DOWNSPOUT COLLECTOR FROM CURB**

DS1	FL. ELEV. = 1256.61
DS2	FL. ELEV. = 1260.06
DS3	FL. ELEV. = 1260.85
DS4	FL. ELEV. = 1261.37
DS5	FL. ELEV. = 1261.50

**OWNER:**  
KEITH D. STEVENS REVOCABLE TRUST  
231 N. CRESTWAY ST  
WICHITA, KS 67208

**DEVELOPER:**  
CLUB CARWASH OPERATING, LLC  
1213 OLD HWY 63, STE 101  
COLUMBIA, MO 65201



**UTILITY PLAN**

DATE:	11/23/20	PER CITY COMMENTS:	
DATE:	01/04/21	PER CITY COMMENTS:	
DATE:	04/13/21	PER FIELD CONDITIONS:	

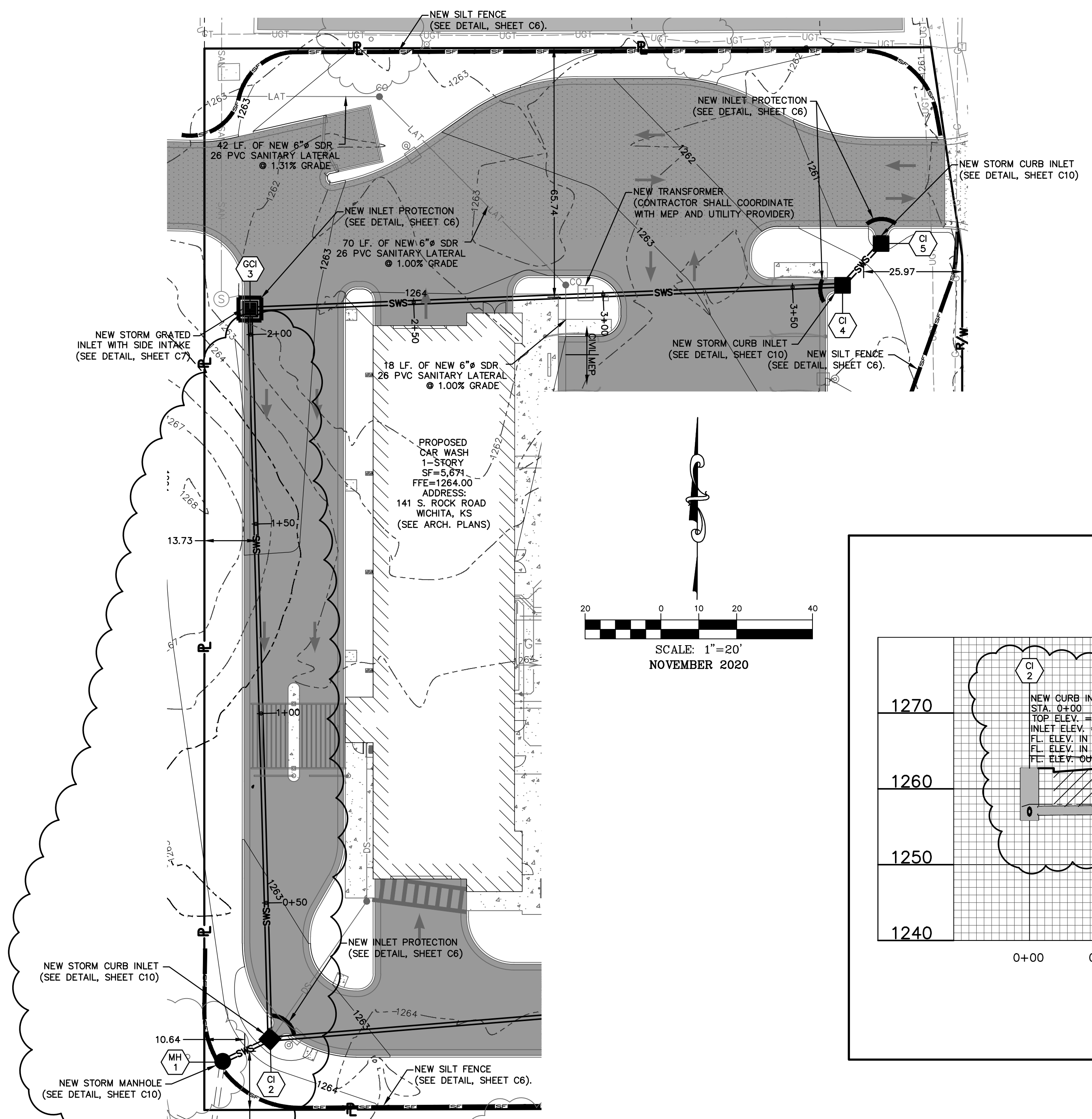
NOV. 2020  
SCALE: 1" = 20'  
PROJ. NO.: M19-7783A  
SHEET NO.: C4

**CHORAN**  
Professional Engineer  
KURTIS J. DAVIES  
KANSAS PROFESSIONAL ENGINEER  
E-26277

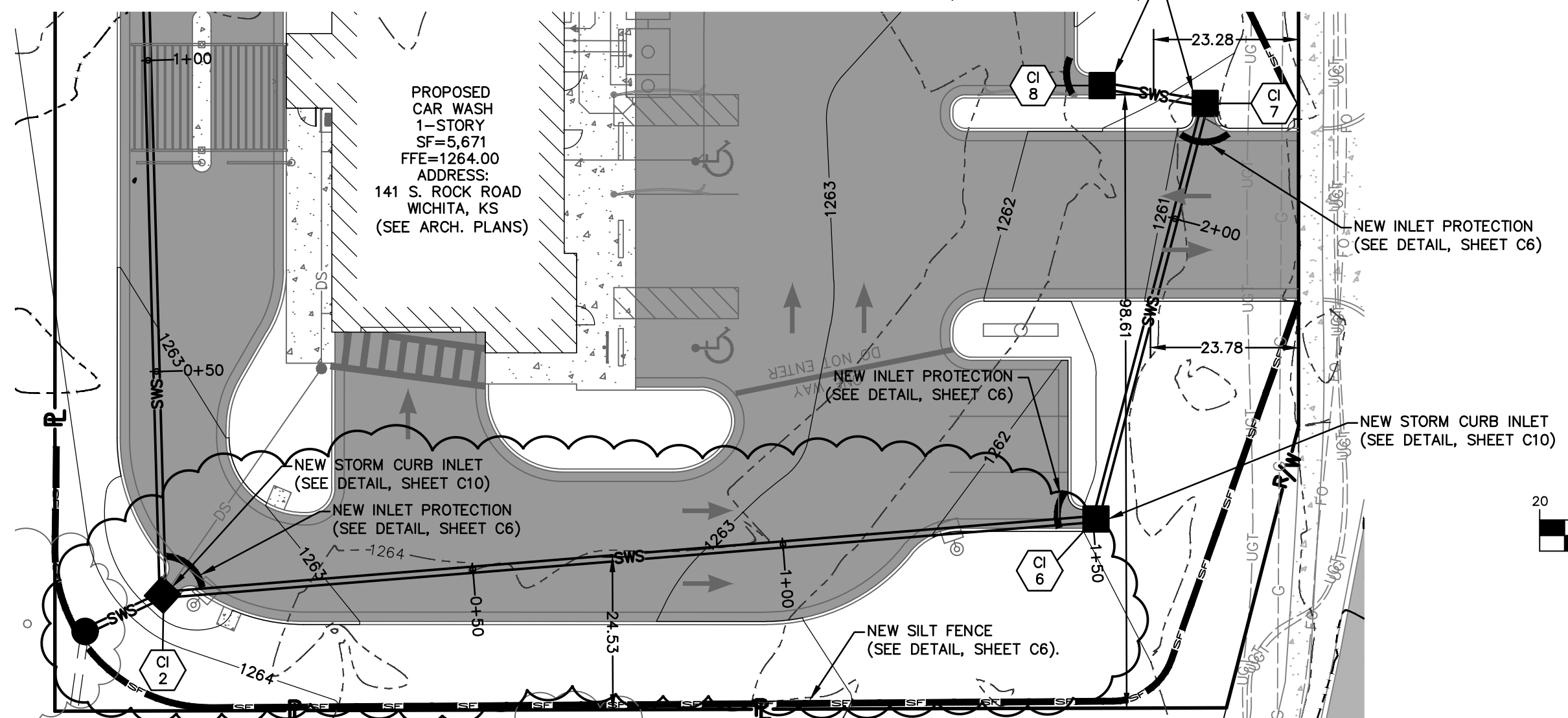
**SITE IMPROVEMENT PLANS  
CLUB CARWASH  
WICHITA, KS**

DWG NAME: J:\2019\M19-7783-141 S. Rock Rd. Wichita, KS\ENGINEERING\AUTOCAD DRAWINGS\03\_Construction Drawings\M19-7783\_C4\_UTILITY PLAN.dwg LAYOUT TAB: C4 PLOTTED ON: Apr 14, 2021 - 9:30am PLOTTED BY: KFarrell

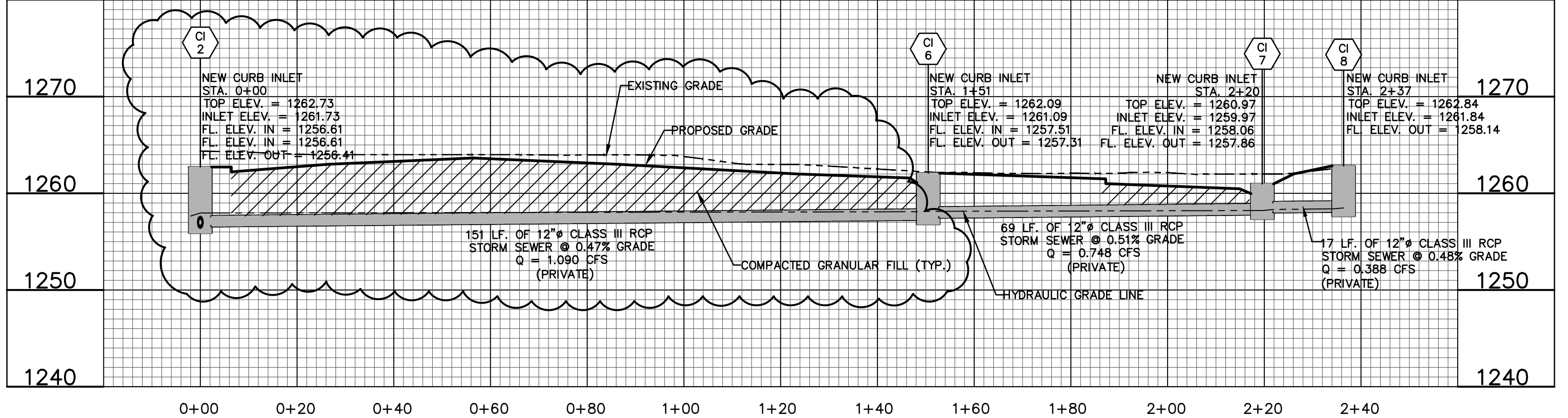
# STORM SEWER PLAN AND PROFILE



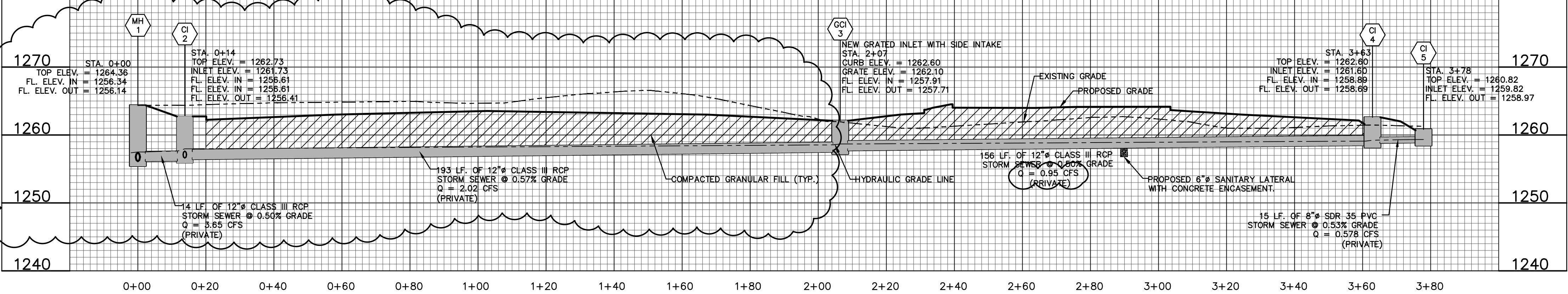
PLAN VIEW 1



PLAN VIEW 2



PROFILE VIEW 2



PROFILE VIEW 1

**OWNER:**  
KEITH D. STEVENS REVOCABLE TRUST  
231 N. CRESTWAY ST  
WICHITA, KS 67208

**DEVELOPER:**  
CLUB CARWASH OPERATING, LLC  
1213 OLD HWY 63, STE 101  
COLUMBIA, MO 65201



**CHORAN**  
Professional Engineering, Architecture, Surveying, Planning, and Construction Services

North Office  
8 East Main Street  
Wentzville, Missouri 63385  
636-332-4574 (tel.)  
636-327-0760 (fax)  
www.choran.com

Kansas State Certificate of Authority Numbers:  
E-2927

Two working days prior to the start of any excavation, call 1-800-NO-SAFE for utility location information.

All OSHA rules & regulations and applicable local codes of construction shall be strictly followed (i.e. Trenching, Blasting, etc.).

**KURTIS J. DAVIES**  
LICENSED PROFESSIONAL ENGINEER  
KANSAS  
E-26277

**SITE IMPROVEMENT PLANS**  
**CLUB CARWASH**  
**WICHITA, KS**

DATE	BY	REVISION
11/23/20	ERH	PER CITY COMMENTS
01/04/21	ERH	PER CITY COMMENTS
01/25/21	ERH	PER CITY COMMENTS
04/13/21	KAF	PER FIELD CONDITIONS

**STORM SEWER PLAN AND PROFILE**

DATE: NOV. 2020

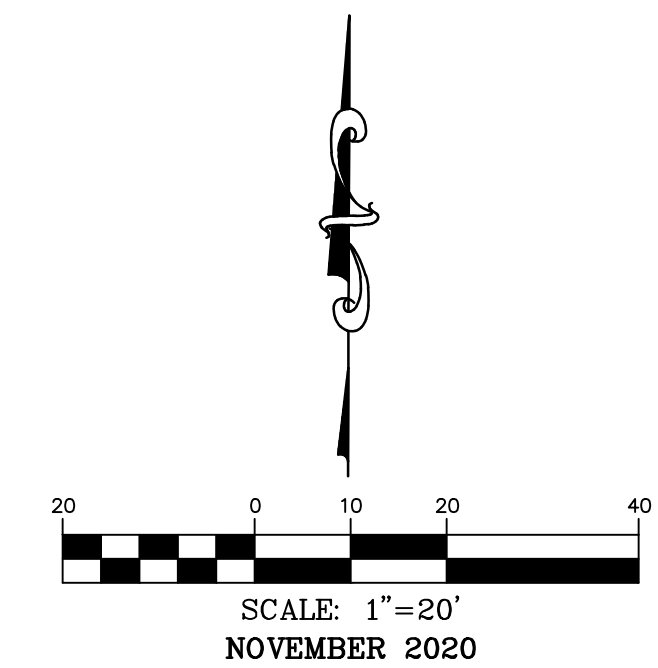
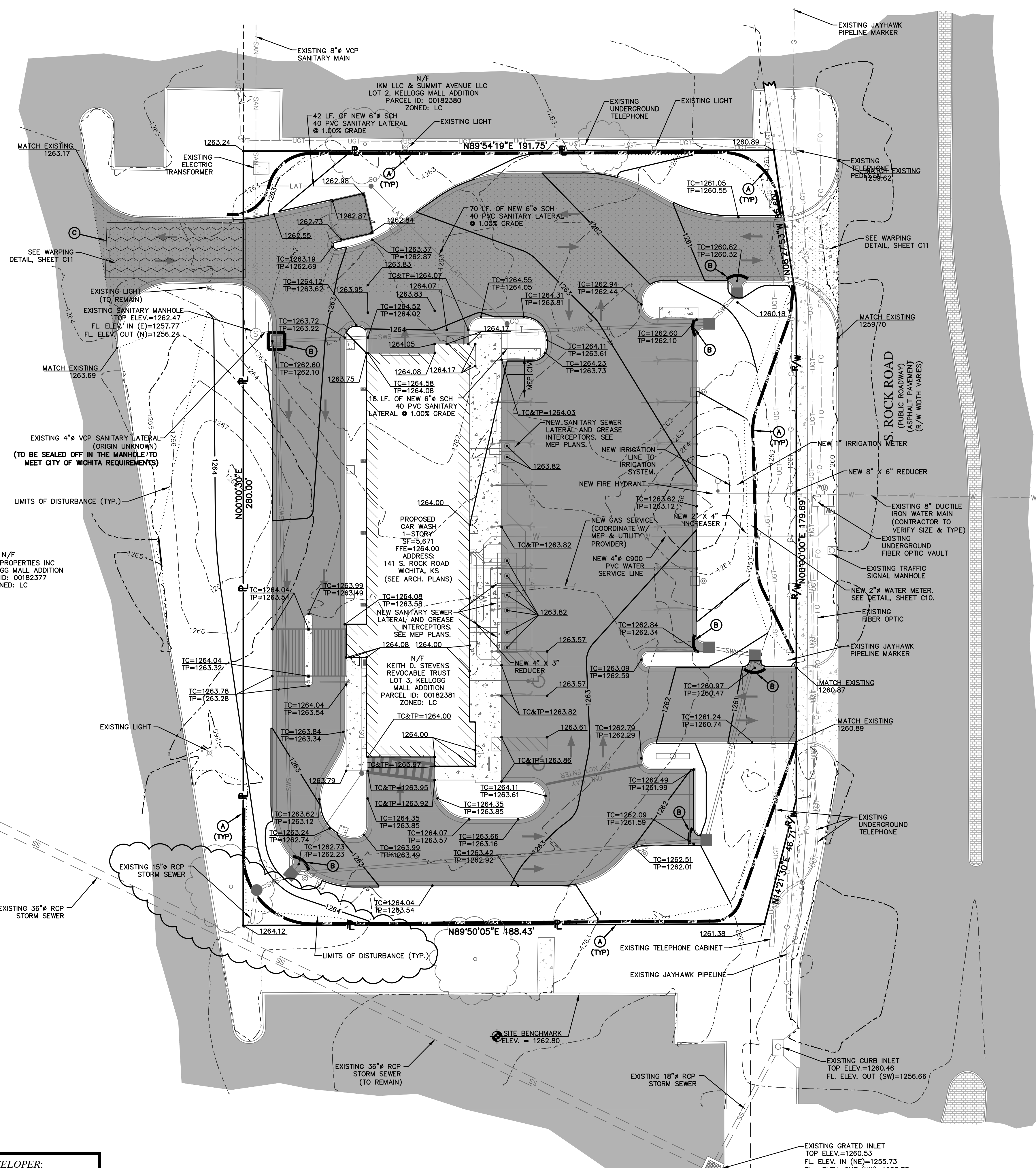
HORIZ. SCALE: 1" = 20'

VERT. SCALE: 1" = 10'

PROJ. NO.: M19-7783A

DWG. NO.: C7

# GRADING PLAN



## SWPPP LEGEND

- (A) NEW SILT FENCE. SEE DETAIL, SHEET C6.
- (B) NEW INLET PROTECTION. SEE DETAIL, SHEET C6.
- (C) NEW CONSTRUCTION ENTRANCE. SEE DETAIL, SHEET C6.

NOTE: ALL SPOT ELEVATIONS SHOWN ON THIS PLAN ARE TOP OF PAVEMENT UNLESS OTHERWISE NOTED.

NOTE: PROVIDE CITY WITH A COPY OF GRADING COMPACTION TEST RESULTS.

NOTE: ALL TRUCKS SHALL BE WASHED DOWN BEFORE LEAVING SITE.

SITE DISTURBANCE TOTAL SITE AREA = 1.27 AC. DISTURBED AREA = 1.21 AC.

NOTE: ALL INLETS ARE TO RECEIVE INLET SILT FENCE PROTECTION. (SEE DETAIL, SHEET C6)

GRADING QUANTITY:  
CUT - 1,128 CY.  
FILL - 813 CY.

NOTE: THESE QUANTITIES ARE RAW NUMBERS. THE CONTRACTOR SHALL NOT USE THESE NUMBERS AS THEIR BID QUANTITIES. THE CONTRACTOR SHALL DETERMINE THEIR OWN QUANTITIES.

SOIL EROSION/SEDIMENTATION CONTROL OPERATION TIME SCHEDULE												
NOTE: GENERAL CONTRACTOR TO COMPLETE TABLE WITH THEIR SPECIFIC PROJECT SCHEDULE												
CONSTRUCTION SEQUENCE	DEC.	JAN.	FEB.	MAR.	APR.	MAY	JUN.	JUL.	AUG.	SEP.	OCT.	NOV.
TEMPORARY CONTROL MEASURES												
ROUGH GRADE / SEDIMENT CONTROL												
PERMANENT CONTROL MEASURES												
SEED AND FINAL STABILIZATION												



**OWNER:**  
KEITH D. STEVENS REVOCABLE TRUST  
231 N. CRESTWAY ST  
WICHITA, KS 67208

**DEVELOPER:**  
CLUB CARWASH OPERATING, LLC  
1213 OLD HWY 63, STE 101  
COLUMBIA, MO 65201

**SITE IMPROVEMENT PLANS**  
**CLUB CARWASH**  
**WICHITA, KS**

**GRADING PLAN**  
 DATE: NOV. 2020  
 SCALE: 1" = 20'  
 PROJ. NO.: M19-7783A  
 SHEET NO.: C5

**CHORAN**  
 Civil Engineering  
 Land Surveying  
 Architecture  
 Site Development  
 General Consulting  
 Master Planning

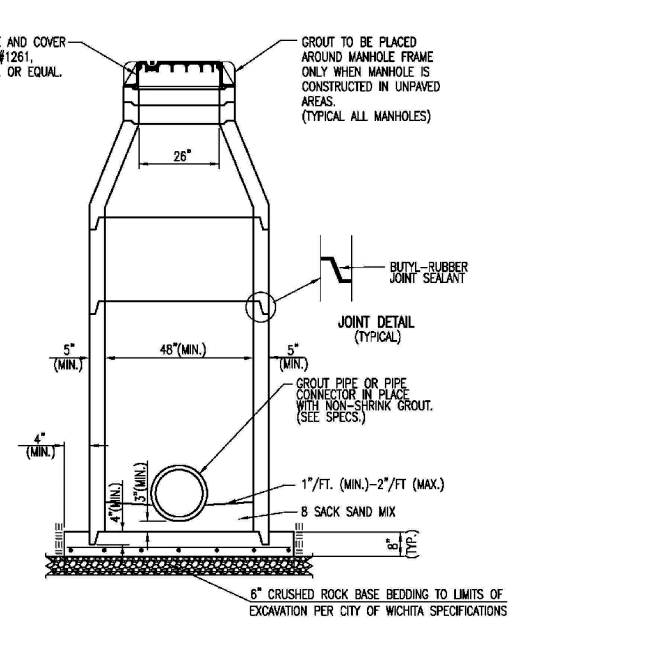
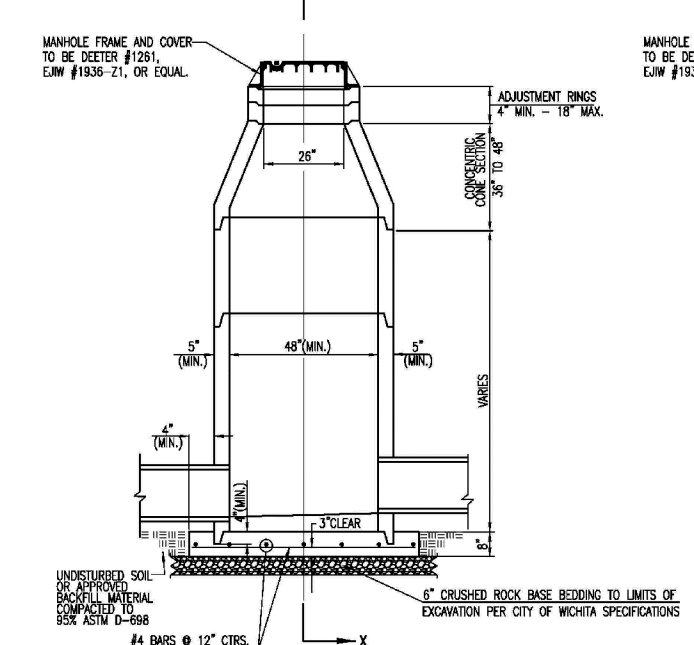
Kansas State Certificate of Authority Numbers: E-2927

Two working days prior to the start of any excavation call 1-800-455-SAFE for utility location information. All OSHA rules & regulations and state regulations for construction required by these plans shall be strictly followed (i.e. trenching, blasting, etc.).

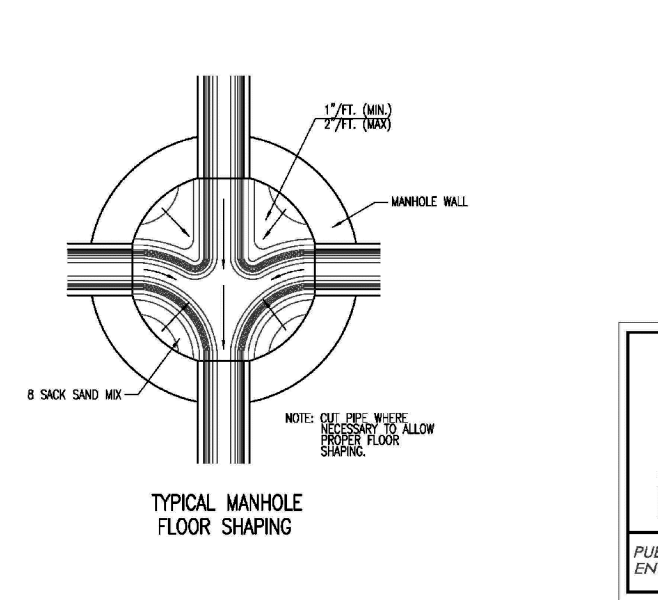
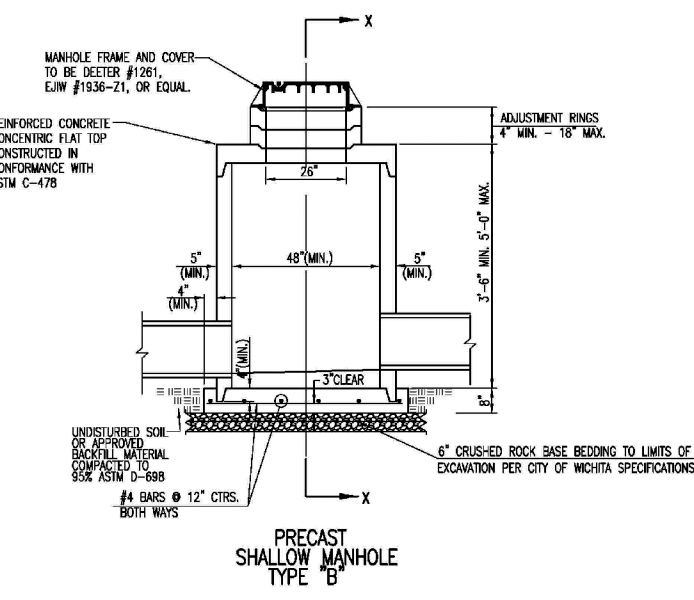
KURTIS J. DANIELS  
 LICENSED PROFESSIONAL ENGINEER  
 KANSAS  
 E-26277

DATE	APP'D. BY	DATE	APP'D. BY
11/23/20	ERH	11/23/20	KJD
11/24/20	ERH	01/04/21	ERH
01/04/21	ERH	01/25/21	ERH
01/25/21	ERH	01/28/21	ERH
01/28/21	ERH	04/13/21	KAF

DWG NAME: J:\2019\M19-7783-141 S. Rock Rd. Wichita, KS\ENGINEERING\AUTOCAD DRAWINGS\03\_Construction Drawings\M19-7783-C5\_GRADING PLAN.dwg LAYOUT TAB: C5 PLOTTED BY: KForrell



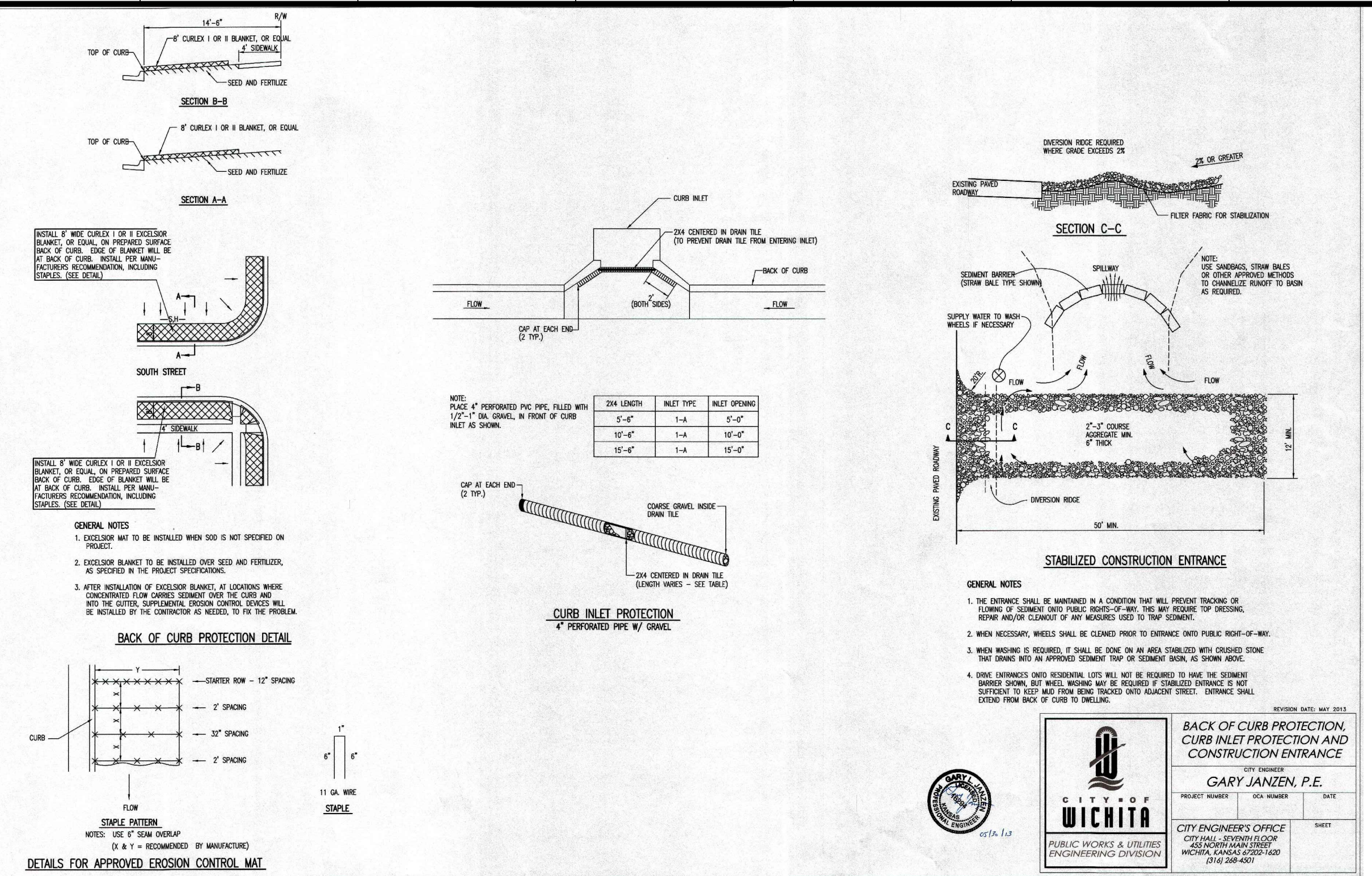
- GENERAL NOTES**
- IF THE TOP OF THE CURB, THE MANHOLE, OR THE SIDEWALK IS TO BE PLACED ON A SLOPE, THE MANHOLE SHALL BE SET AT AN ELEVATION THAT WILL MAINTAIN THE MANHOLE AT THE CORNER OF THE SLOPE.
  - STEEL REINFORCING SHALL BE REQUIRED IN ALL MANHOLE WALLS.
  - ALL MANHOLE CONSTRUCTION SHALL BE IN ACCORDANCE WITH THE LATEST EDITIONS OF THE MICHIGAN DEPARTMENT OF TRANSPORTATION (MDOT) STANDARD SPECIFICATIONS FOR HIGHWAYS.
  - CONCRETE USED FOR MANHOLE CONSTRUCTION SHALL CONFORM TO THE LATEST EDITIONS OF THE MICHIGAN DEPARTMENT OF TRANSPORTATION (MDOT) STANDARD SPECIFICATIONS FOR HIGHWAYS.
  - PRECAST MANHOLES SHALL BE SET AT LEAST 4 FEET FROM THE EDGE OF THE ROADWAY.
  - MANHOLES WITH FEET SIDES 24" OR LARGER SHALL HAVE 1" TO 2" RADIUS CORNERS (MIN).
  - MANHOLES WITH FEET SIDES 24" OR LARGER SHALL HAVE 1" TO 2" RADIUS CORNERS (MIN).
  - MANHOLES WITH FEET SIDES 24" OR LARGER SHALL HAVE 1" TO 2" RADIUS CORNERS (MIN).
  - CONCRETE SHALL BE PLACED IN LIFTS WITH VIBRATION. REINFORCING BARS SHALL BE COVERED WITH 1" TO 2" OF CONCRETE.
  - MANHOLE FRAMES SHALL BE SET AT LEAST 4 FEET FROM THE EDGE OF THE ROADWAY.
  - FOR STEEL REINFORCING, COVER TO BE SET AT LEAST 1" FROM THE CONCRETE.
  - FOR STEEL REINFORCING, COVER TO BE SET AT LEAST 1" FROM THE CONCRETE.



**PRECAST CONCRETE MANHOLE (STORM SEWER)**

DESIGNED BY: GARY JANZEN, P.E.

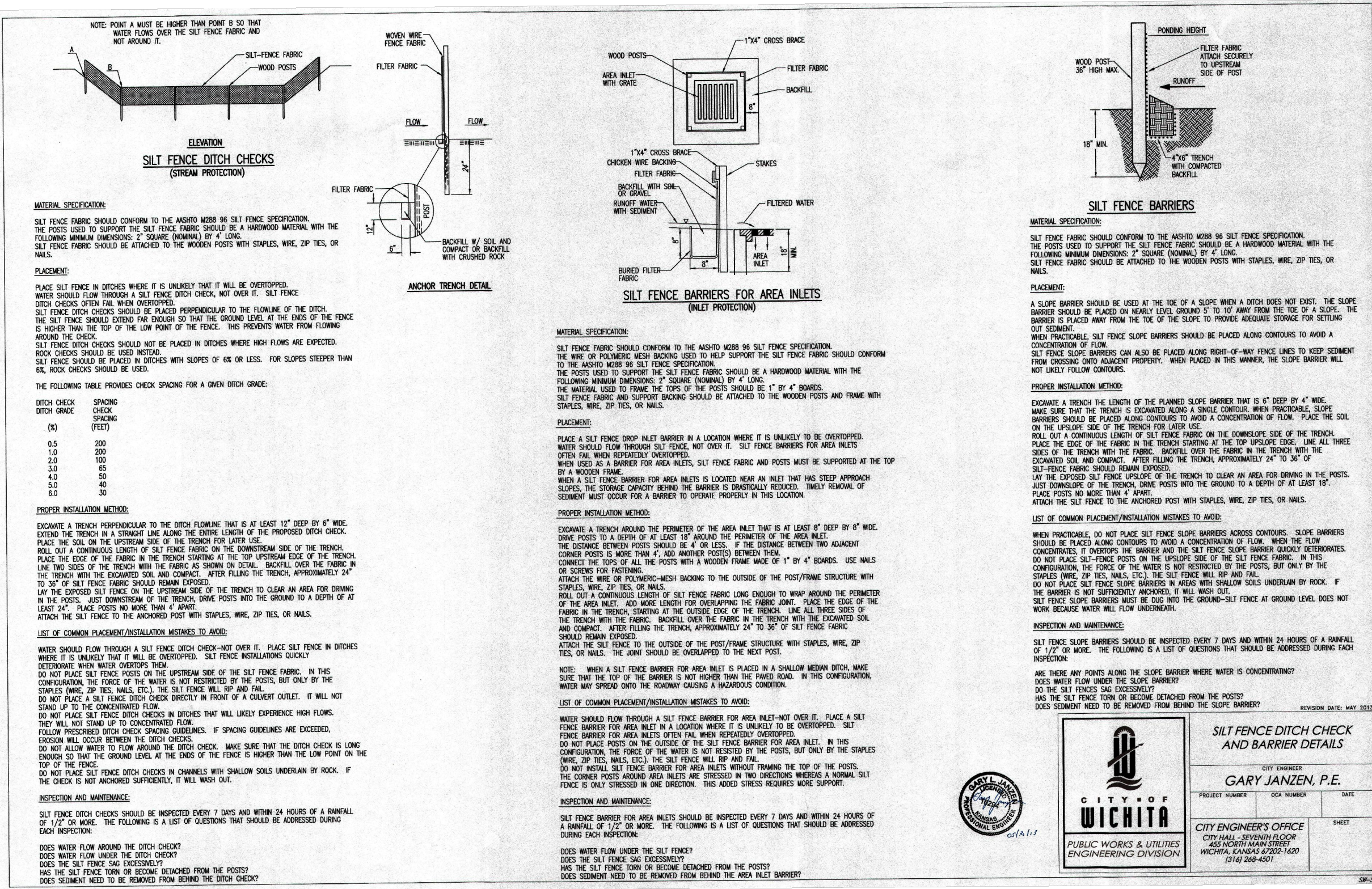
CITY ENGINEER'S OFFICE  
PUBLIC WORKS & UTILITIES  
ENGINEERING DIVISION  
WICHITA, KANSAS 67202  
(316) 266-4001



**BACK OF CURB PROTECTION, CURB INLET PROTECTION AND STABILIZED CONSTRUCTION ENTRANCE**

DESIGNED BY: GARY JANZEN, P.E.

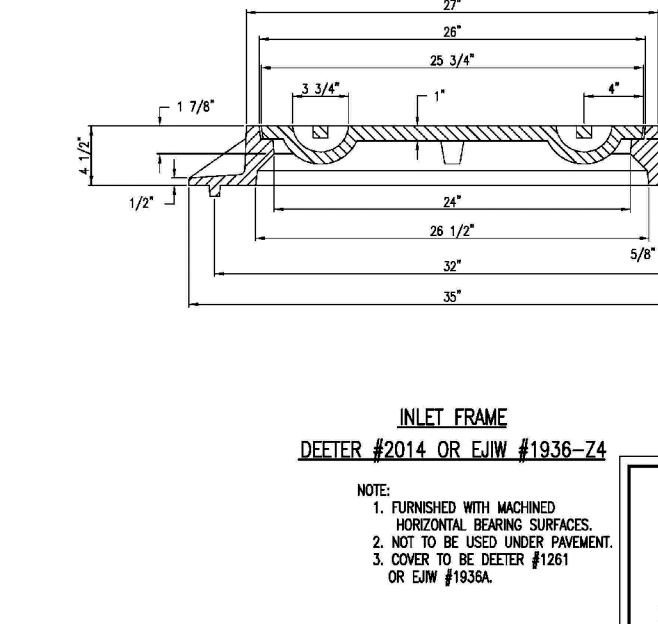
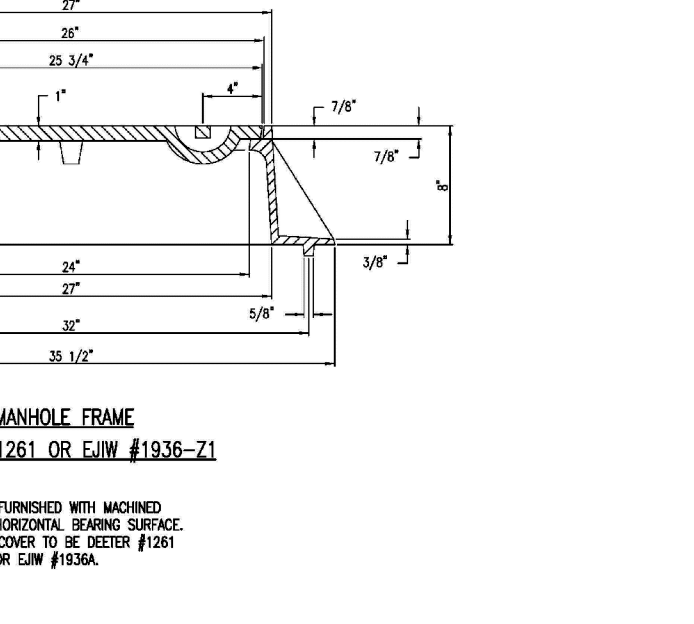
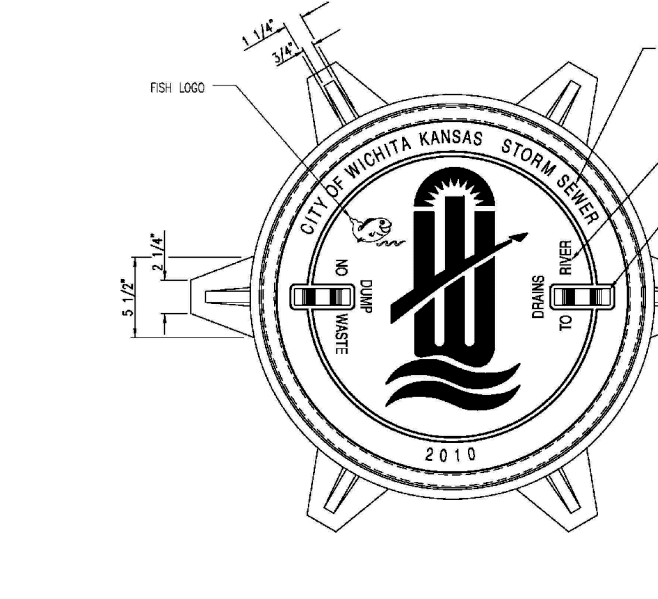
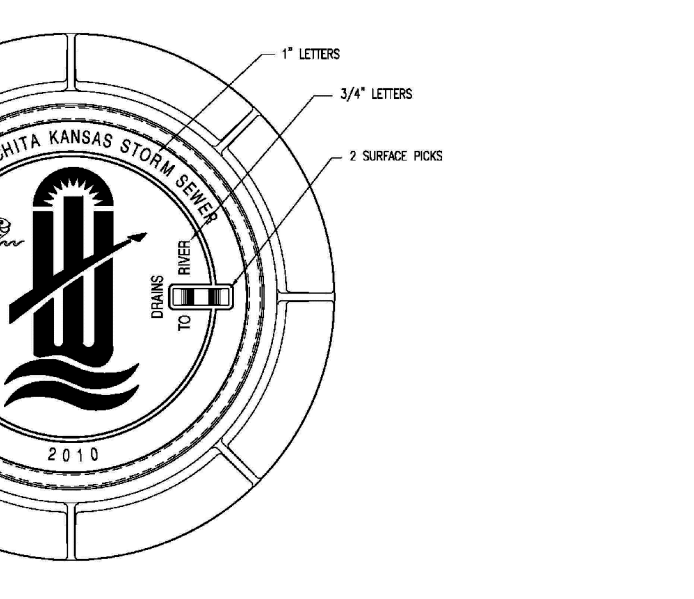
CITY ENGINEER'S OFFICE  
PUBLIC WORKS & UTILITIES  
ENGINEERING DIVISION  
WICHITA, KANSAS 67202  
(316) 266-4001



**SILT FENCE DITCH CHECK AND BARRIER DETAILS**

DESIGNED BY: GARY JANZEN, P.E.

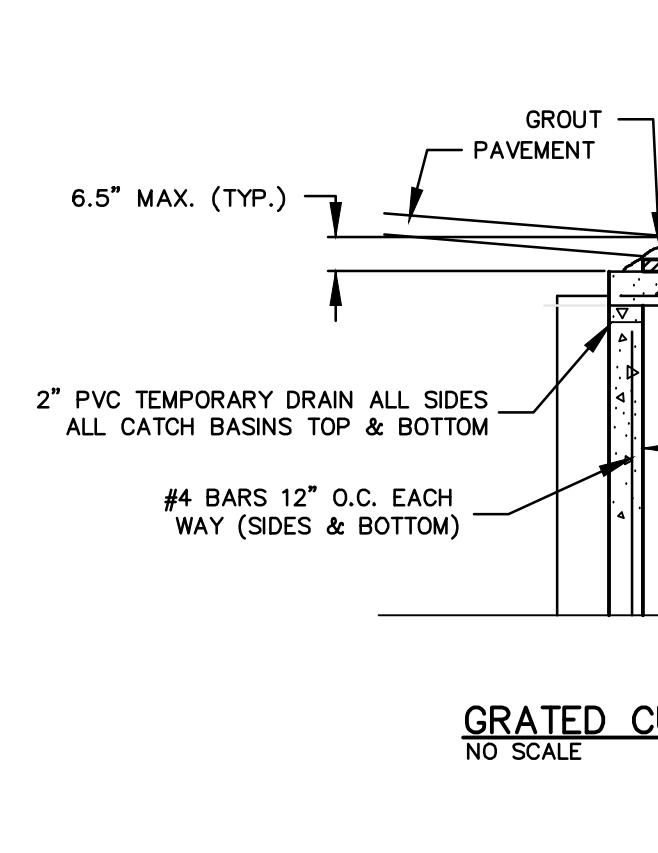
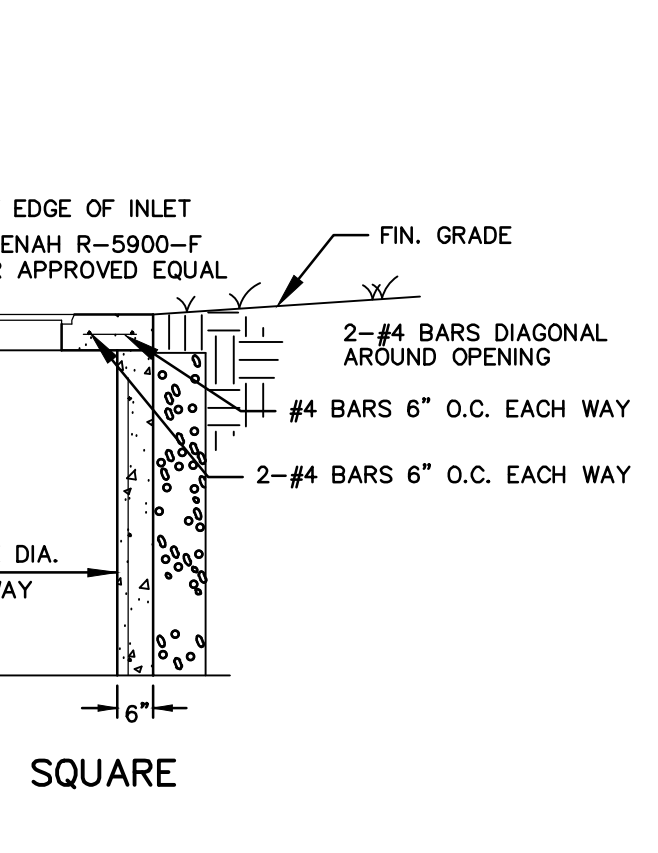
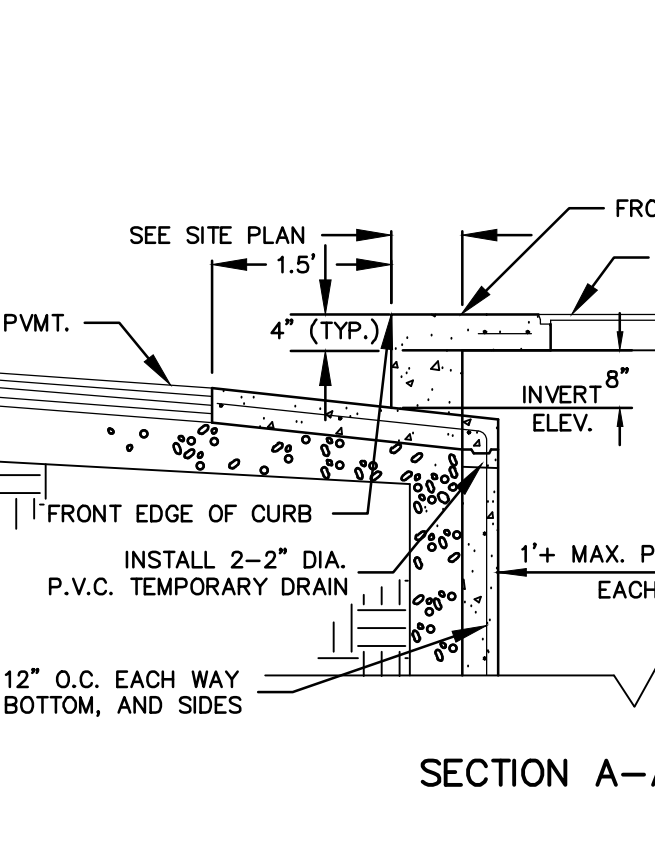
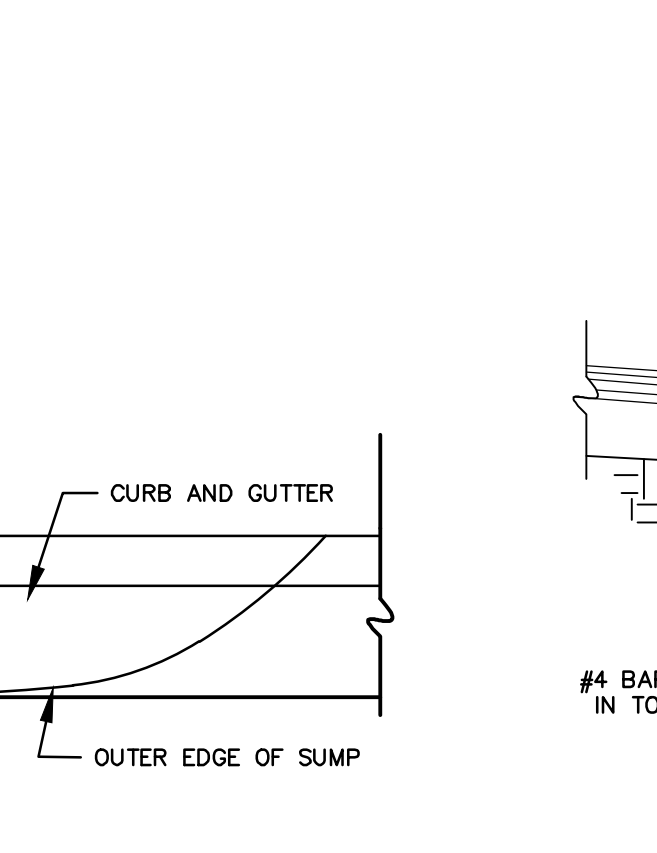
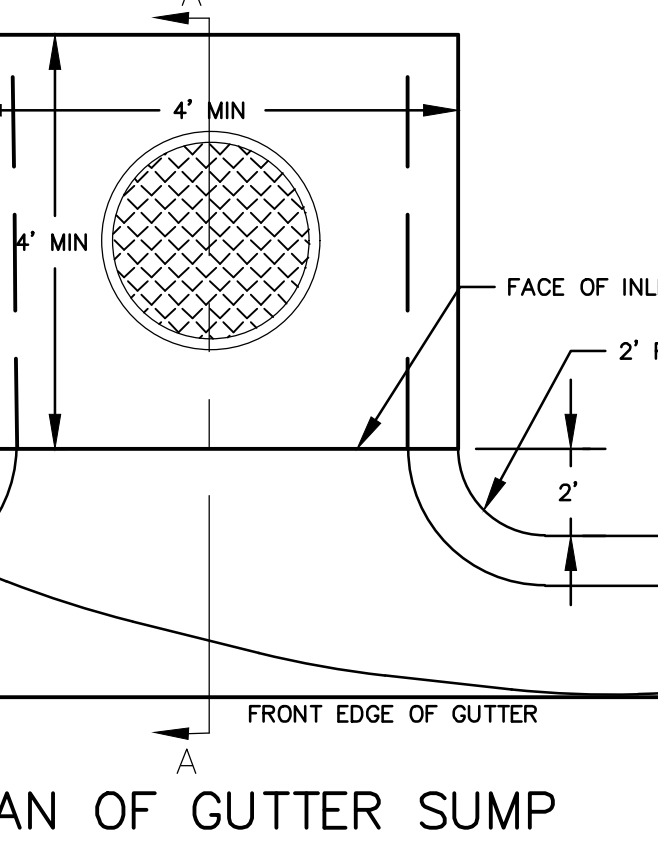
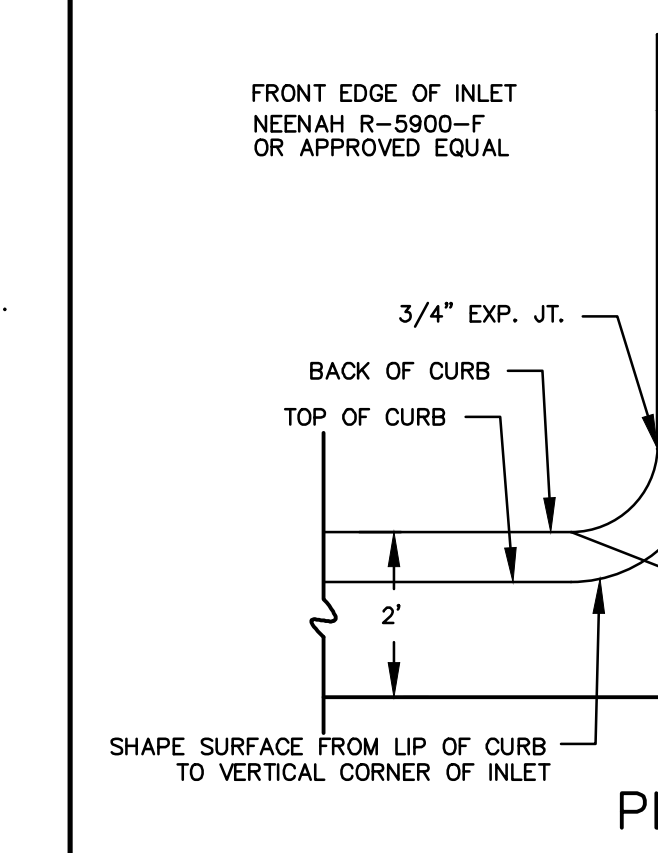
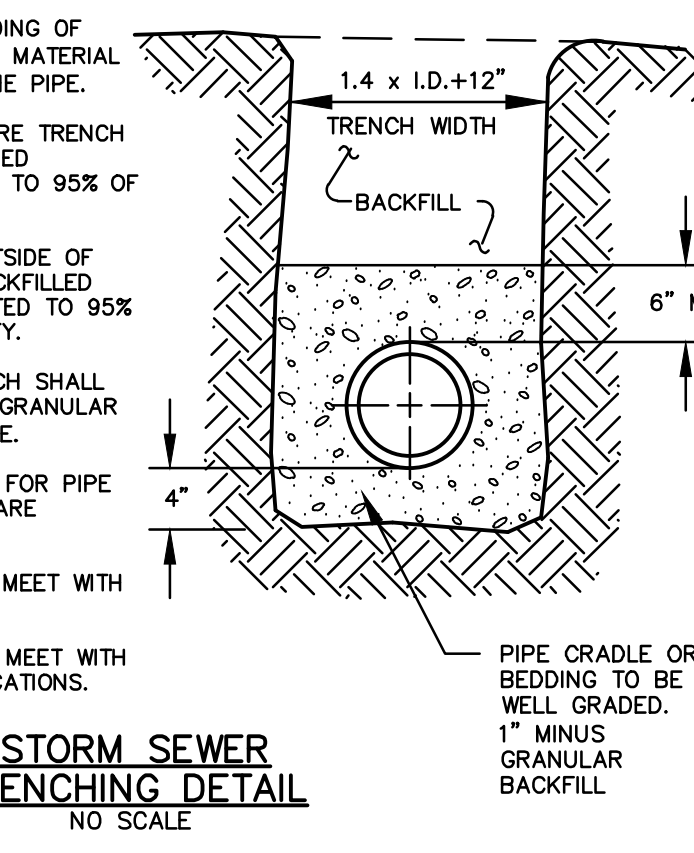
CITY ENGINEER'S OFFICE  
PUBLIC WORKS & UTILITIES  
ENGINEERING DIVISION  
WICHITA, KANSAS 67202  
(316) 266-4001



**MANHOLE/INLET FRAME AND COVER (STORM SEWER)**

DESIGNED BY: GARY JANZEN, P.E.

CITY ENGINEER'S OFFICE  
PUBLIC WORKS & UTILITIES  
ENGINEERING DIVISION  
WICHITA, KANSAS 67202  
(316) 266-4001



**OWNER:**  
KEITH D. STEVENS REVOCABLE TRUST  
231 N. CRESTWAY ST  
WICHITA, KS 67208

**DEVELOPER:**  
CLUB CARWASH OPERATING, LLC  
1213 OLD HWY 63, STE 101  
COLUMBIA, MO 65201

**TYPE "A" TOP CURB INLET DETAIL**  
NO SCALE

**TYPE "A" TOP CURB INLET DETAIL**  
NO SCALE

**TYPE "A" TOP CURB INLET DETAIL**  
NO SCALE

**TYPE "A" TOP CURB INLET DETAIL**  
NO SCALE

**TYPE "A" TOP CURB INLET DETAIL**  
NO SCALE

**TYPE "A" TOP CURB INLET DETAIL**  
NO SCALE

**TYPE "A" TOP CURB INLET DETAIL**  
NO SCALE

**CHORAN**  
Civil Engineering  
Land Surveying  
Architecture  
Site Development  
General Planning

North Office  
8 East Main Street  
Wentzville, Missouri 63385  
636-332-4574 (tel.)  
636-327-0760 (fax)  
wentzville@choran.com

Kansas State Certificate  
of Authority Numbers:  
E-2927

Two working days prior to the start of any excavation work, the contractor shall call 1-800-485-SAFE for utility location information.

All OSHA rules & regulations and all applicable codes of practice shall be strictly followed (i.e. trenching, blasting, etc.)

**KURTIS J. DANIELS**  
LICENSED PROFESSIONAL ENGINEER  
KANSAS  
20277

**STORM SEWER IMPROVEMENTS CLUB CARWASH WICHITA, KANSAS**

**DETAILS - SPECIFIC - EROSION CONTROL**

DATE: 11/20/20  
DRAWN BY: ERH  
CHECKED BY: KUD  
SCALE: NO SCALE  
PROJ. NO: M19-7783A  
DWG. NO: 4