

GENERAL NOTES:

- The Contractor shall comply with all applicable safety regulations. All construction shall be completed following current City Standard Specifications and Special Provisions.
- Contractor will be required to provide notice to utility companies a minimum of seventy-two (72) hours prior to any excavation, as follows:
 Kansas One-Call 687-2470
 The Contractor must notify the following in case of an emergency:
 AT&T 1-800-246-6464
 Black Hills Energy 1-800-694-8989
 City of Wichita Water & Sewer 1-316-219-8921
 City of Wichita Stormwater 1-316-268-4090
 City of Wichita Traffic 1-316-268-4034
 Cox Communications 1-888-249-3530
 Kansas Gas Service 1-888-482-4950
 Westar Energy 1-800-544-4857
- Utility service lines, poles, valve boxes, meters, and etcetera are to be adjusted as necessary by others prior to construction unless the plans specifically call for their adjustment by the Contractor or unless the plans specifically identify a utility to be adjusted by its owner during construction. Existing utilities and their location, as shown on the plans, represent the best information obtainable for design. The Contractor will be required to work around existing utilities within the right-of-way which do not conflict with proposed construction.
- Rubble from the removal of miscellaneous structures and excess excavation which is to be wasted shall be disposed of on sites to be provided by the Contractor. These sites shall be approved by the Engineer as to suitability, appearance and site location. Locations, in the opinion of the Engineer, that will leave an unsightly appearance will not be approved. All disposal sites must be approved by the Kansas Department of Health and Environment. Material either stockpiled or disposed of in a flood plain would require a Kansas State Board of Agriculture permit. Any material dumped in waters of the United States or wetlands is subject to U.S. Corps. of Engineers permitting regulations. Any material buried or stockpiled beyond approved construction limits would require additional archaeological investigations unless buried in a previously approved borrow location.
- Trees and shrubs in public right-of-way which are in direct conflict with proposed new construction shall be removed by the Contractor with the Engineer's approval. Trees and shrubs which are not in direct conflict with proposed new construction shall be saved and protected from damage.
- The Contractor shall give all property owners and/or tenants of developed property abutting the construction of this project a minimum of ten (10) days notice prior to start of construction.
- The Contractor shall be responsible for preserving property irons. The Contractor will be required to re-establish any property irons which are damaged or destroyed by his construction operations. Such irons shall be re-established by a licensed land surveyor in accordance with state laws.
- The Engineering Division shall field locate water valves one time during construction when requested by the Contractor. It shall be the Contractor's responsibility to preserve such field locations during the construction process. Water valves, valve boxes or fire hydrants damaged during construction shall be repaired by Contractor at his own expense. Valve boxes and water meters within the project limits shall be adjusted to match field grades by the contractor.
- The Contractor shall notify the consultant engineer and Dawnita Reinhardt with the City at 316-650-0740 with the anticipated construction start date and notify them of project completion. Staking and inspection for this project will be the responsibility of the Contractor.
- If traffic is impacted by construction, a traffic control plan must be submitted and approved by the City Traffic Engineer, Mike Armour at traffic@wichita.gov before construction can begin. The Contractor shall be responsible for all traffic control measures to facilitate construction. All construction zone markings and signage shall conform to the latest version of Manual on Uniform Traffic Control Devices (MUTCD) as published by the US Dept. of Transportation, Federal Highway Administration. All costs associated with construction markings and signage shall be the Contractors responsibility.
- All elevations shown are U.S.G.S. Datum (NAVD 88).
- All areas disturbed during construction that will not be under proposed pavement shall be restored to match existing conditions.
- Any sidewalk, drive approach, or street pavement removed to construct project must have a pavement cut permit and be replaced by the City contractor. Permits can be obtained by calling 316-268-4501 or 316-268-4480.
- City maintenance of storm sewer ends at the last structure in the easement or right-of-way.
- A portion of excess excavated material shall be mounded around manholes which extend more than one (1) foot above the existing ground. Such mound shall be constructed with new development a six (6) foot diameter flat top with 4 to 1 side slopes down to the original ground. The elevation of the flat top of the mound shall be 0.4 foot below the top to the manhole.
- Geotechnical report available upon request.
- Contractor shall limit the extend of trench open overnight and weekends to less than 50 feet.
- The inspecting firm shall submit to the City Stormwater Maintenance Division a digital copy of the CCTV inspection of the conduits and structures following construction. The digital file formation shall be compatible with the City input template. A copy of the template is available upon request at 316-268-4090.
- The Contractor shall protect from damage and support existing utilities through construction as approved by the utility owner and the Engineer at the contractor's expense.
- Contractor shall provide positive drainage away from all manhole covers.
- The Contractor shall not begin work on the project until the Project Inspector is assigned and on site. Any work completed without inspection will be required to be uncovered for inspection at the Contractor's expense.
- Structure location coordinates are to the center of structure and are to be located with a coordinate datum per the provided control points.

BENCHMARKS

- BM #1
Square cut on NW corner of traffic MH pad
Elevation = 1354.49 (NAVD 88)
- BM #2
Crows foot cut on south rim of drain inlet
Elevation = 1356.47 (NAVD 88)

STORM SEWER IMPROVEMENTS

to serve

LOT 6, BLOCK 1, HAMPTON SQUARE ADDITION

3801 N. Maize Rd.
CITY OF WICHITA, KANSAS

Gary Janzen, P.E. City Engineer

Project Number

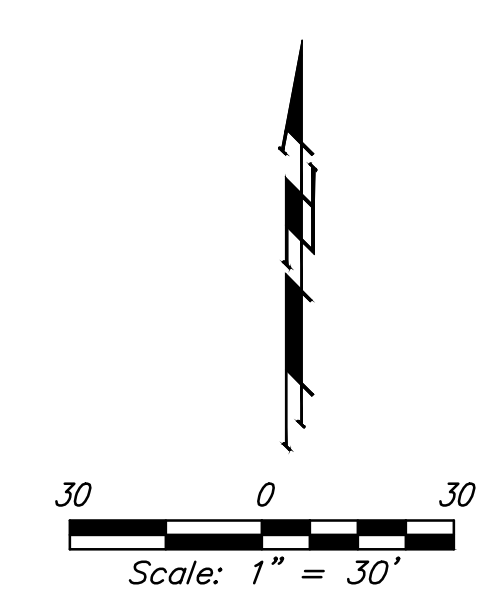
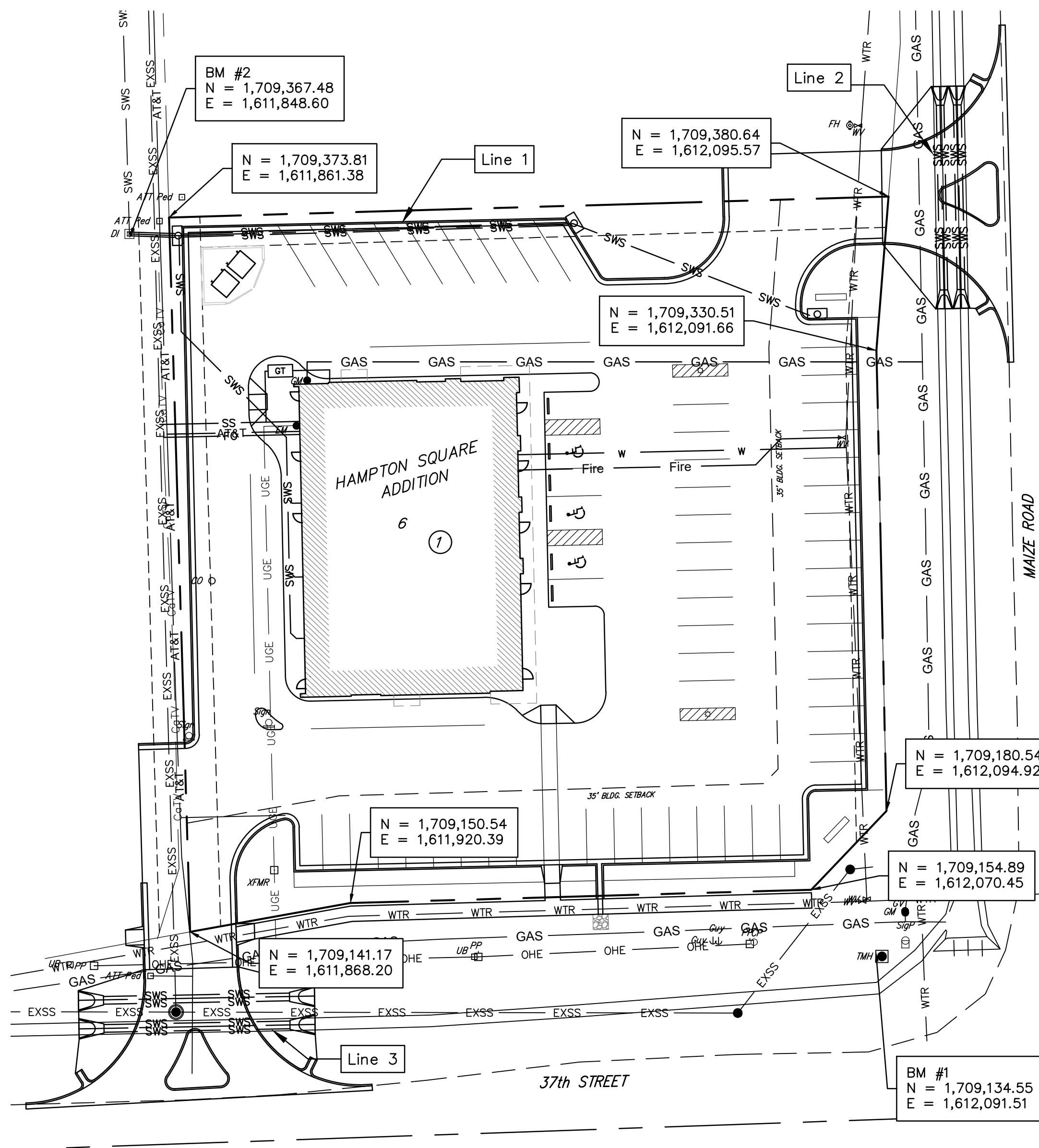
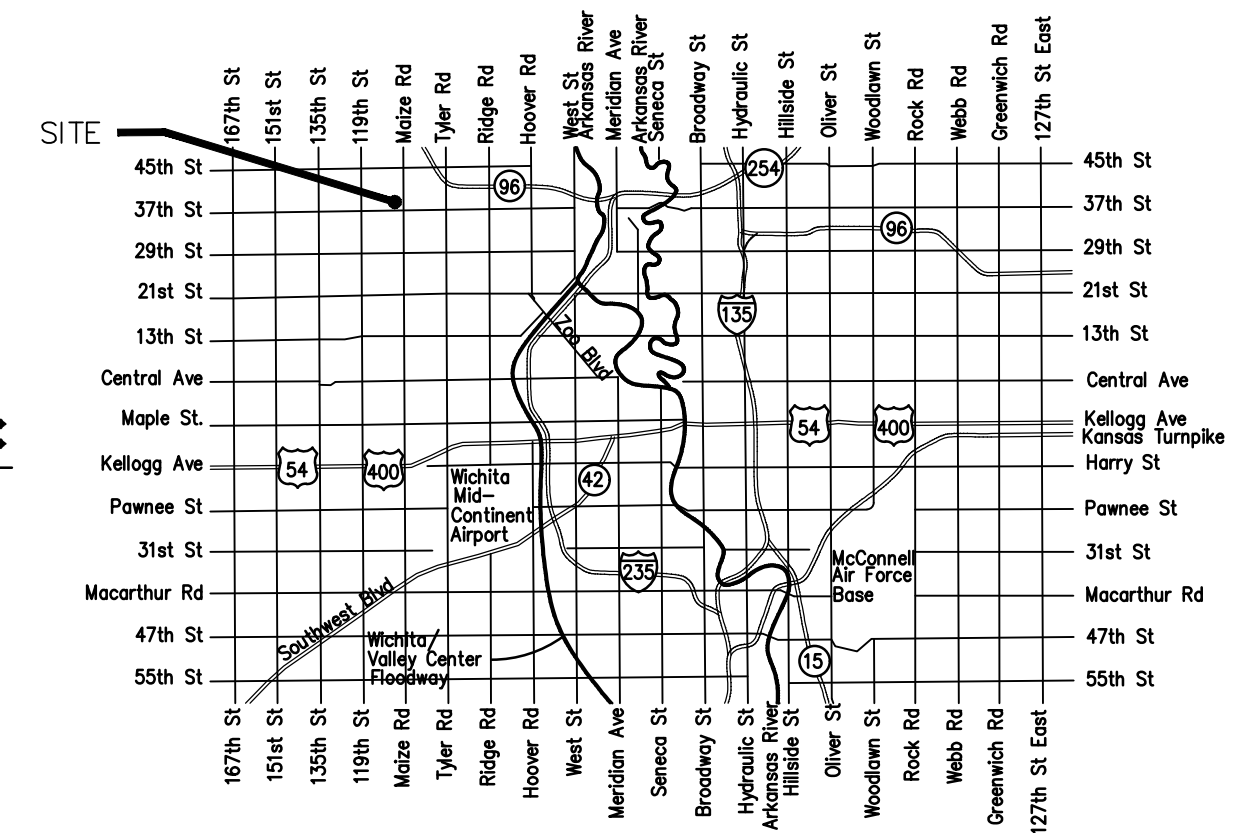
PPD - 2020 - 000665 (113119)

SHEET INDEX:

Title Sheet	1
SWS Line 1 Plan/Profile	2
SWS Line 2 Plan/Profile	3
SWS Line 3 Plan/Profile	4
Type 1 Curb Inlet	5
Erosion Control Plan	6
Copy of Plat	7

*Current Stormwater Control Details are available at City of Wichita web site at <http://www.wichita.gov/PWU/StandardsConstruction/Forms/WebPageStandardsConstruction.aspx>

VICINITY MAP



Stormwater Certification:
 (New Development) or Redevelopment (Circle One)
 Stormwater Permit # SW02020-0057
 NOI Permit # S-AR94-1171

These construction plans were prepared in accordance with the current Stormwater management Regulations as set forth in the City of Wichita's Stormwater Management Ordinance 16.32 and the policies/guidelines presented in the Wichita/Sedgwick County Stormwater Manual.

Site Area (Acres) = 1.18 acres
 Disturbed Area (Acres) = 1.18 acres
 Water Quality Treatment: Offsite BMP Program
 Downstream Channel Protection: See Plat
 Detention: See Plat
 The BMP used for this development is Curb Inlet BMP

APPROVED AS NOTED
 BY WICHITA PUBLIC WORKS ENGINEERING
 AND STORMWATER DIVISION

Engineering Approved by Shawn Mellies PE (01-07-2021)
 Stormwater Approved by Joe Hickle PE (01-07-2021)

NOTE TO CONTRACTORS

Inspection and testing for this project is to be provided by a Licensed Consulting Engineering Firm under contract with the Owner/Developer. Said inspection to be in accordance with the City of Wichita standard construction engineering practices and certified by a Licensed Professional Engineer in the state of Kansas. No work shall be performed the Contractor without such inspection nor shall any work be commenced without written authorization by the City Engineer. All Construction and Materials shall comply with the current City of Wichita Specifications and Standards and Special Provisions. (on file and available at Wichita.gov).

An approved copy of these plans signed by City staff are required on-site.

AS BUILT

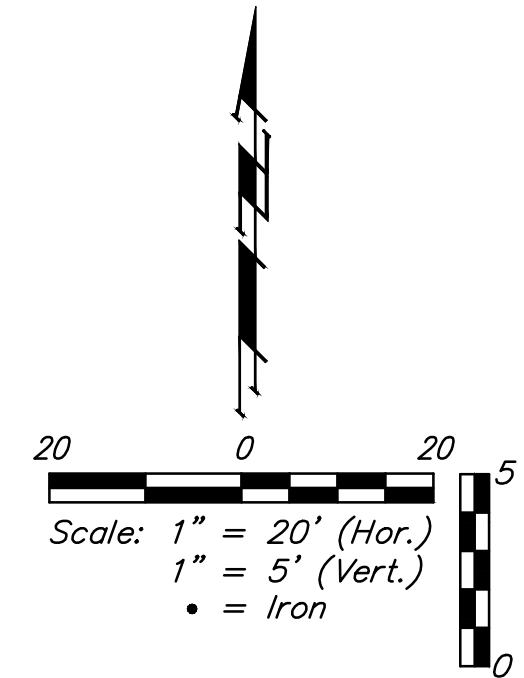
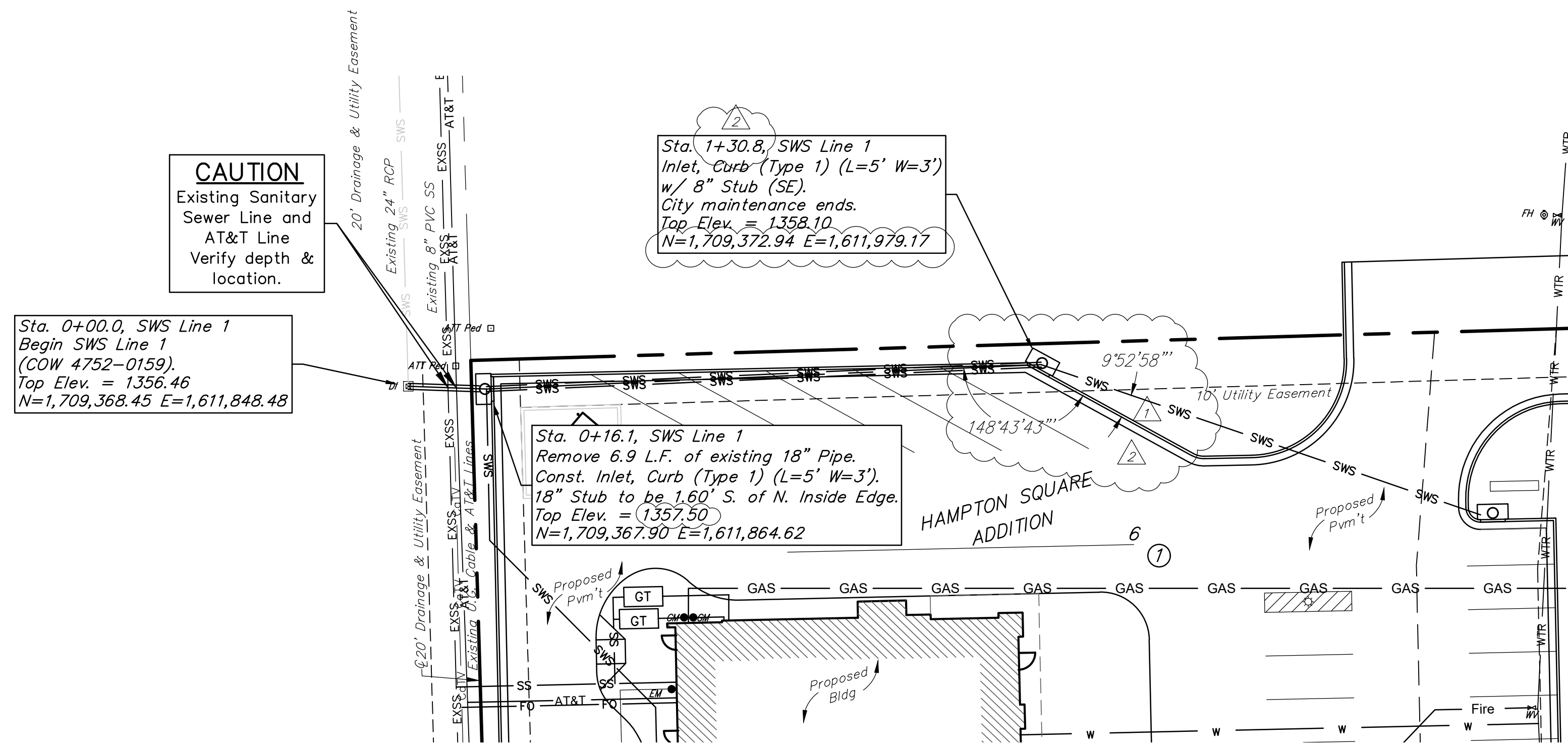
Contractor: McCullough Excavation, Inc. 05/27/2021
 Project Inspector: Tom Jones
 KEMILLER ENGINEERING & SURVEYING, INC.
 117 E. Lewis, Wichita, KS 67202 (316)284-0242



December 2020

BAUGHMAN COMPANY
 315 Ellis St. Wichita, KS 67211 316-262-7271
 BaughmanCo.com

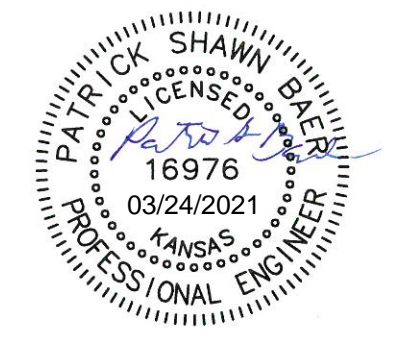
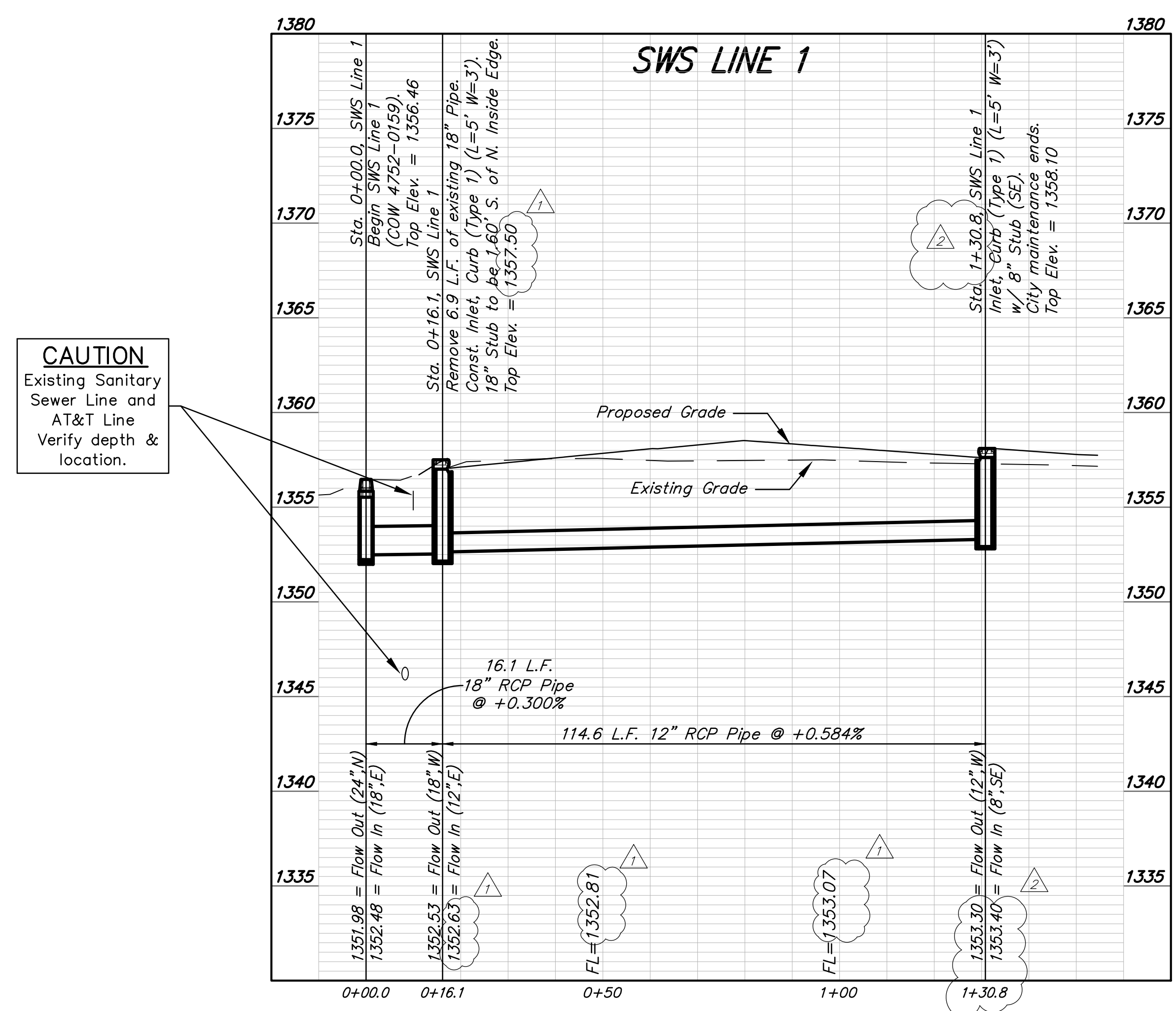
File: E:\PROJECTS\PG-3 SITE 37TH & MAIZE (20-09-E705)\ENGINEERING\PHASE 1\PPD\PG-3 PPD.DWG



BENCHMARKS:

BM #1
Square cut on NW corner of traffic MH pad
Elevation = 1354.49 (NAVD 88)

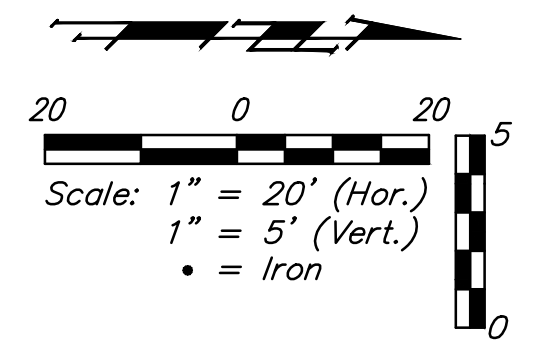
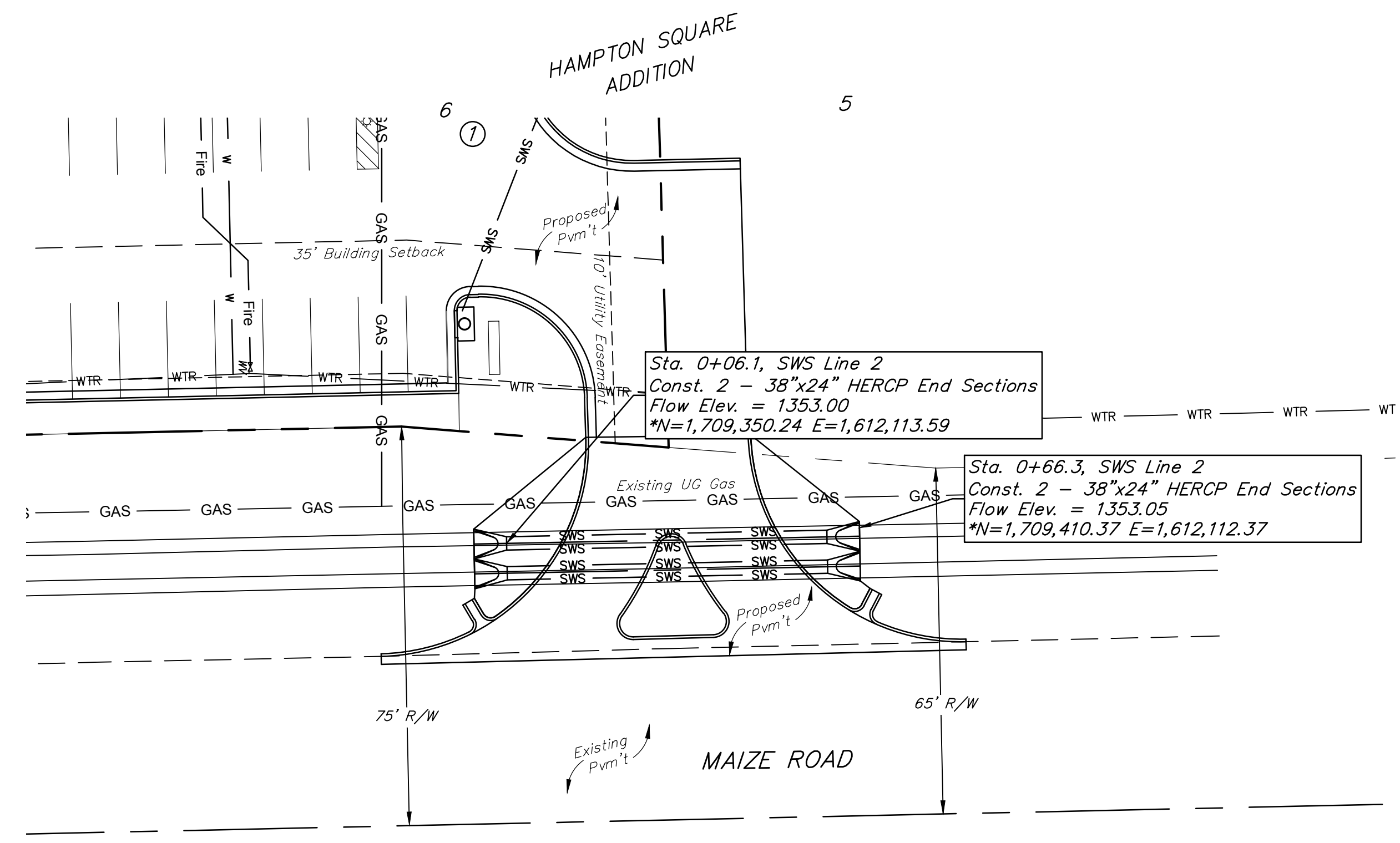
BM #2
Crows foot cut on south rim of drain inlet
Elevation = 1356.47 (NAVD 88)



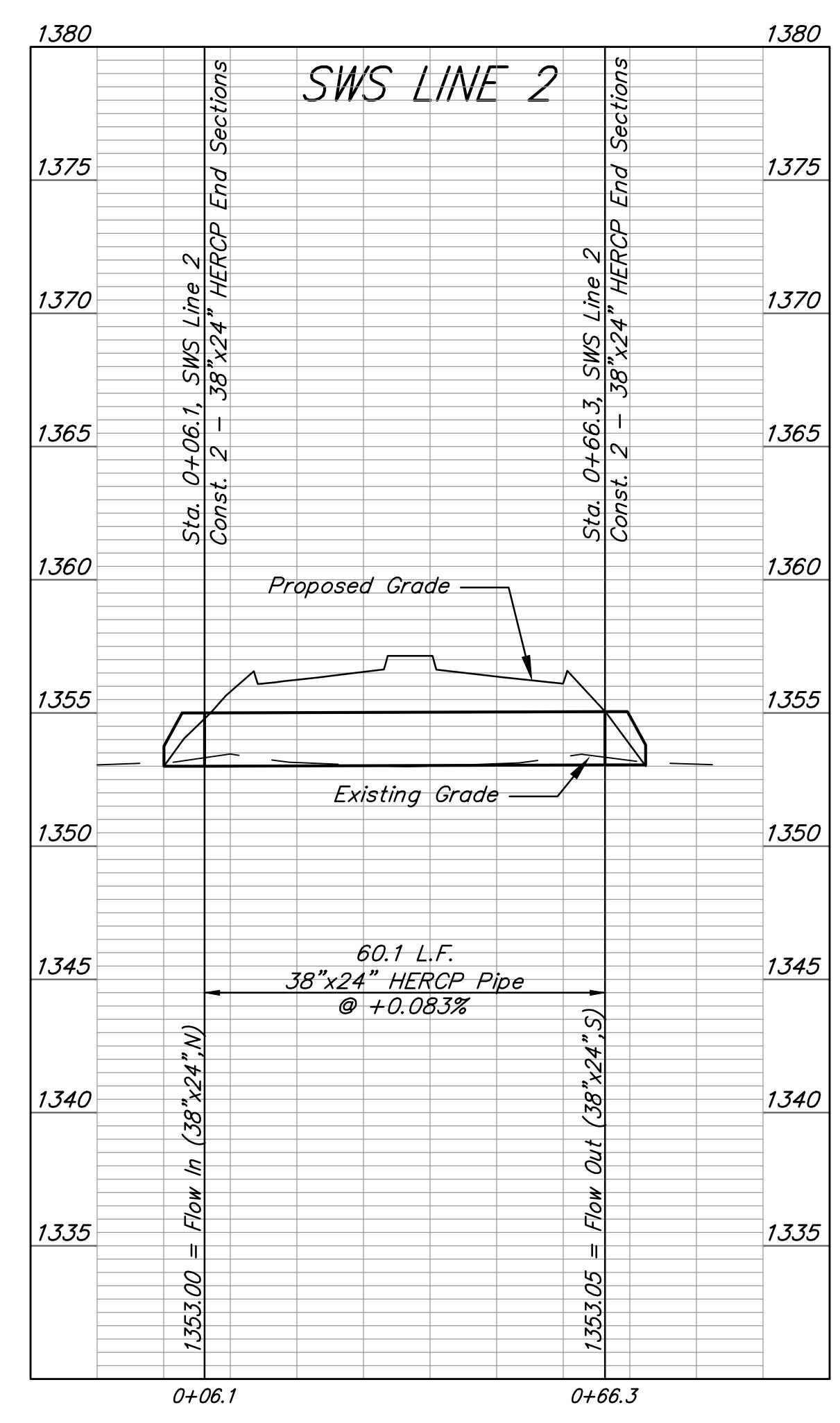
Baughman Company, P.A.
11515 S. Wichita, KS 67211, P.O. Box 2771, 13632 Old
Engineering, Surveying, Planning, Landscape Architecture
Baughman
Professional Engineer
Approved: PSB Date: 12/20/20
11515 S. Wichita, KS 67211, P.O. Box 2771, 13632 Old

IPC-3 Strip Center
SWS LINE 1
Stormwater Sewer Improvements

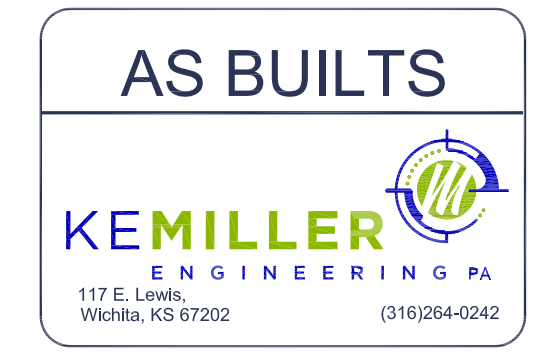
1/4/2021
2/24/2021
SHEET
OF
2
7

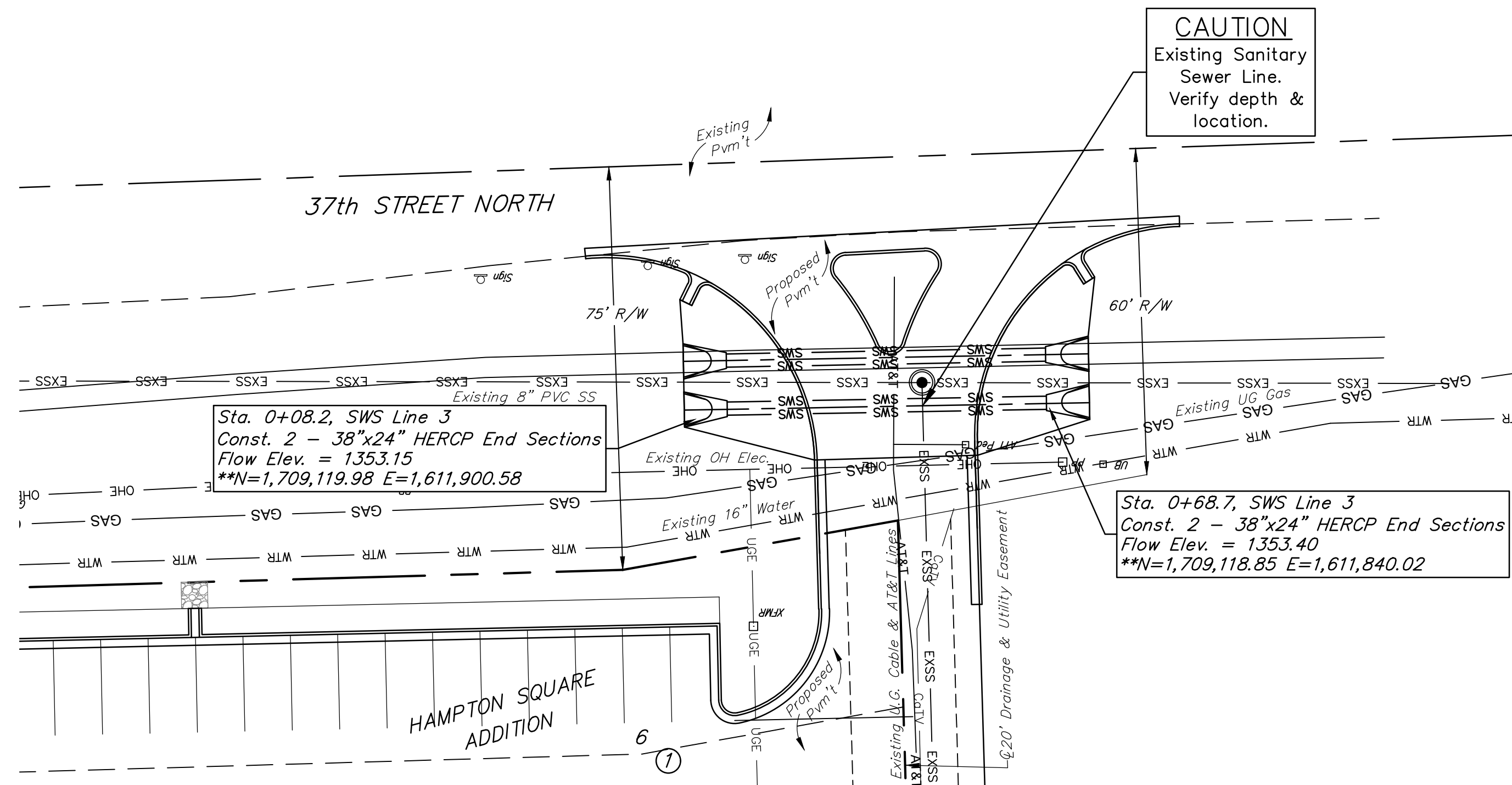


BENCHMARKS:
 BM #1
 Square cut on NW corner of traffic MH pad
 Elevation = 1354.49 (NAVD 88)
 BM #2
 Crows foot cut on south rim of drain inlet
 Elevation = 1356.47 (NAVD 88)



* Coordinates are for the West Line of SWS Line 2. Install East SWS Line 2 5'8\"/>

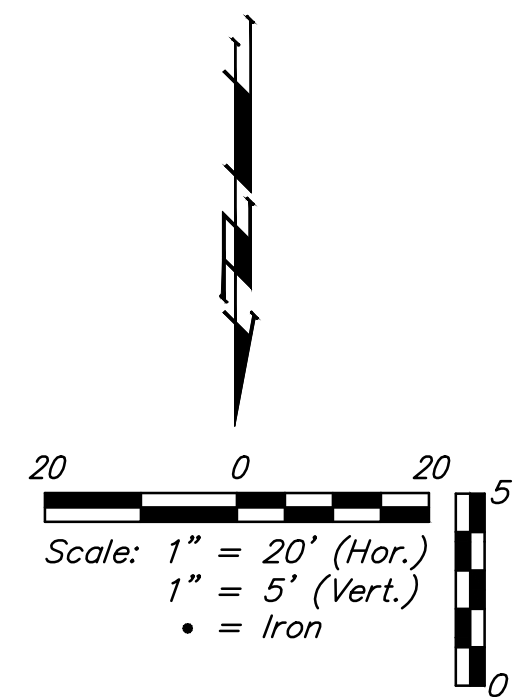




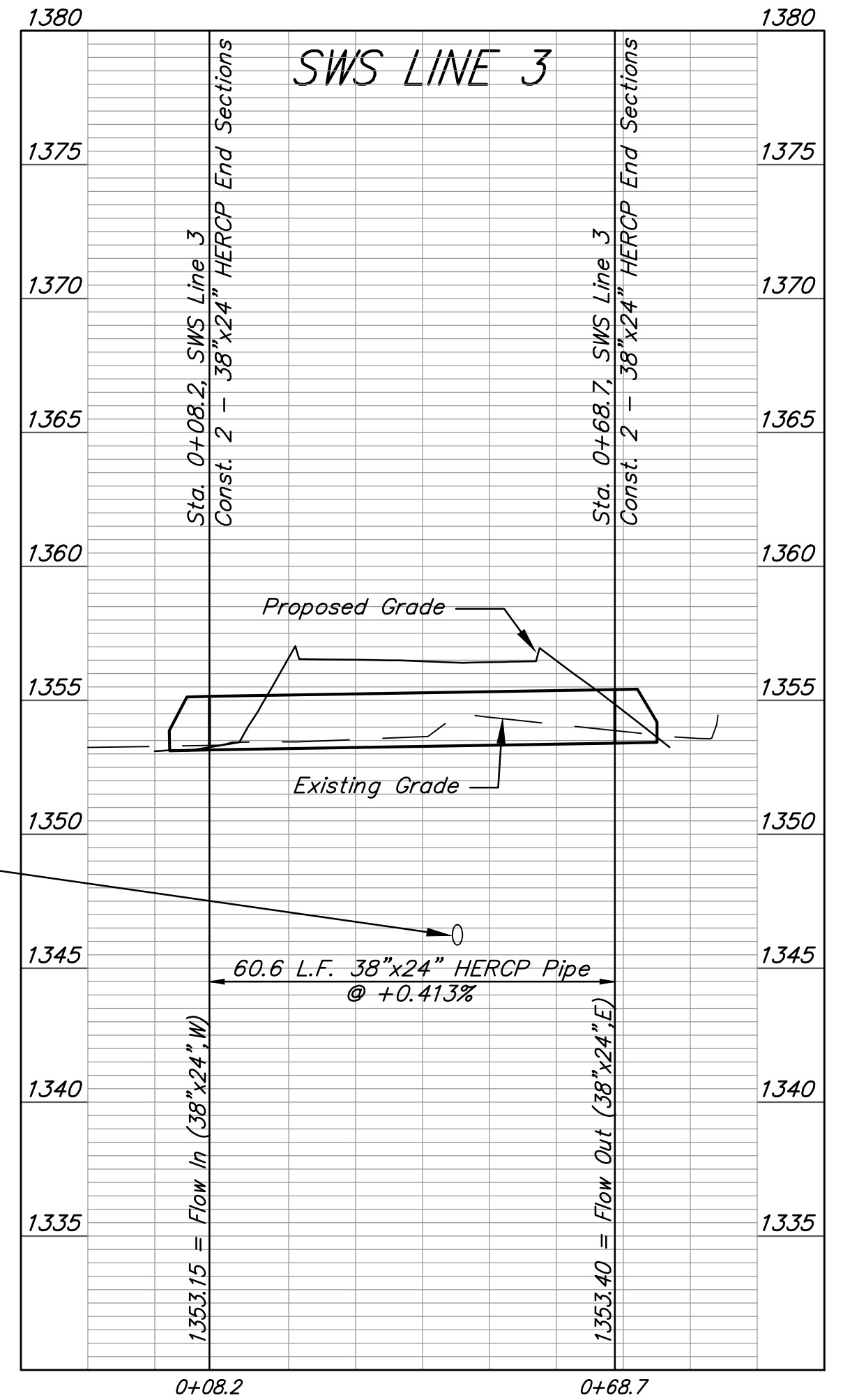
CAUTION
Existing Sanitary Sewer Line.
Verify depth & location.

Sta. 0+08.2, SWS Line 3
Const. 2 - 38"x24" HERCP End Sections
Flow Elev. = 1353.15
**N=1,709,119.98 E=1,611,900.58

Sta. 0+68.7, SWS Line 3
Const. 2 - 38"x24" HERCP End Sections
Flow Elev. = 1353.40
**N=1,709,118.85 E=1,611,840.02

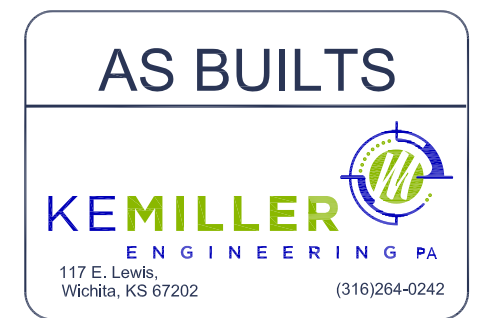


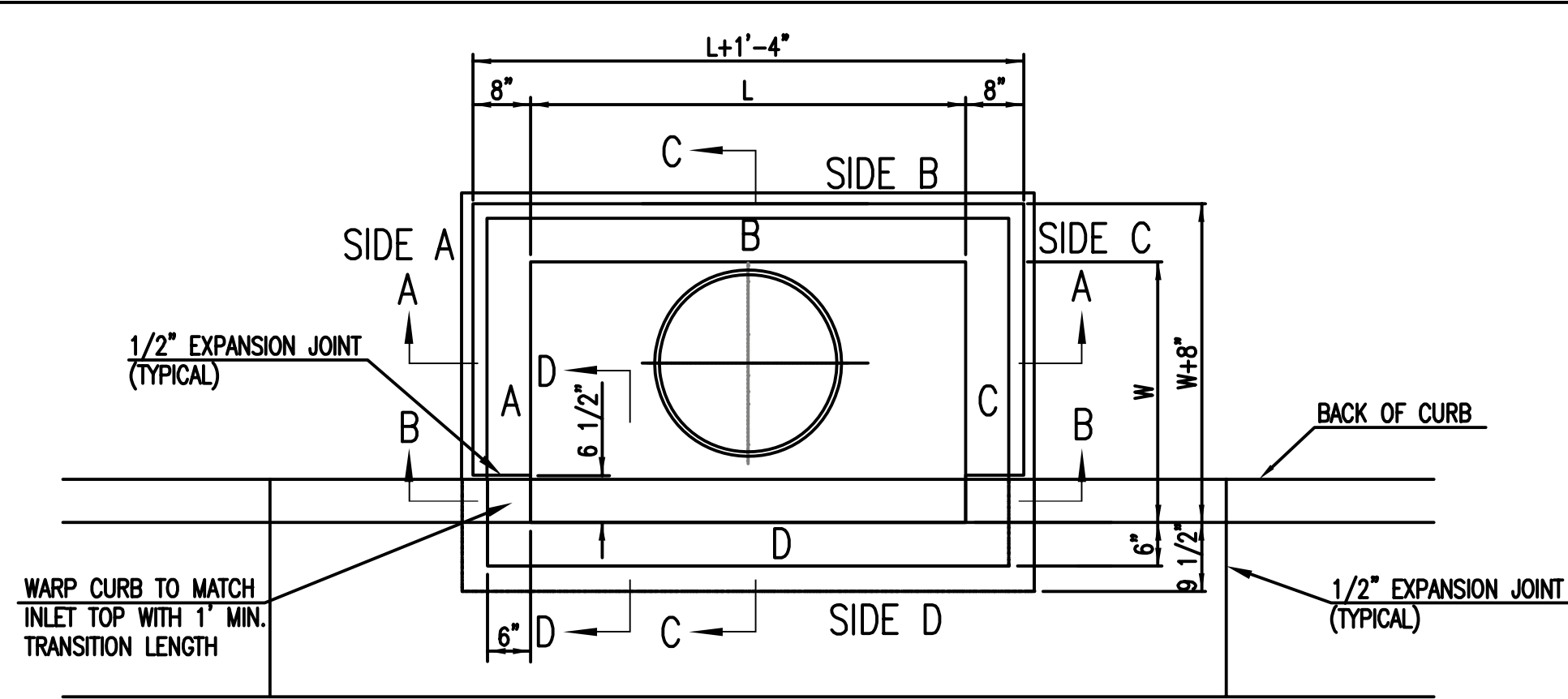
BENCHMARKS:
BM #1
Square cut on NW corner of traffic MH pad
Elevation = 1354.49 (NAVD 88)
BM #2
Crows foot cut on south rim of drain inlet
Elevation = 1356.47 (NAVD 88)



CAUTION
Existing Sanitary Sewer Line and AT&T Line
Verify depth & location.

** Coordinates are for the North Line of SWS Line 3.
Install South SWS Line 3 with centerline spaced 9.25' South of North SWS Line 3 to clear ex. SS Manhole.





TOP VIEW

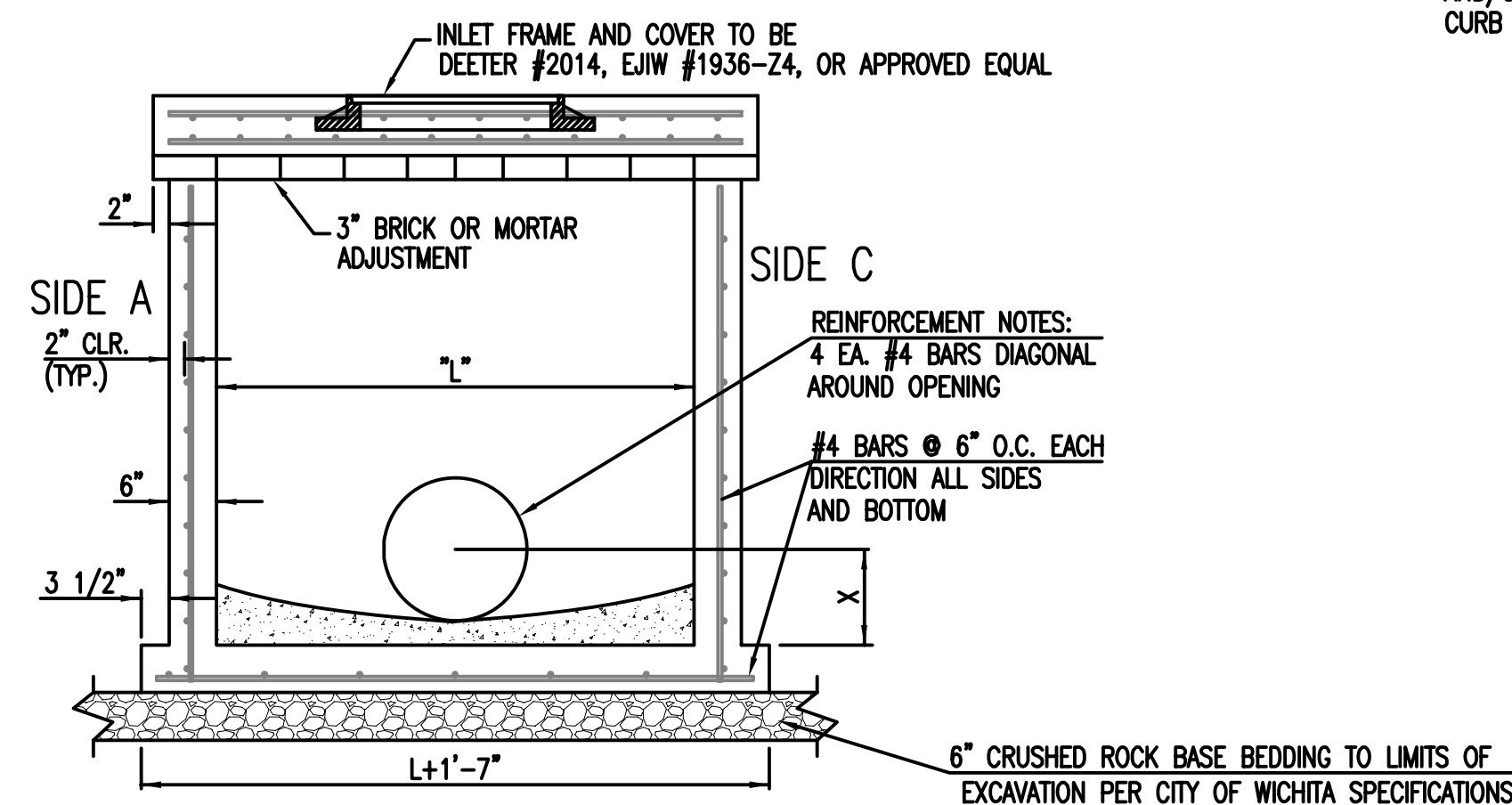
BAR SCHEDULE		
INLET OPENING	B1 BARS	SPACING
5'-0"	#4	4"
10'-0"	#6	3.5"

W	PRE-CAST TOP SIZE		PIPE DIA.**
	WIDTH	LENGTH	
3'-0"	W+8"	L+1'-4"	21" & SMALLER
4'-0"	W+8"	L+1'-4"	24" & 30"
5'-0"	W+8"	L+1'-4"	36" & 42"
6'-0"	W+8"	L+1'-4"	48" & 54"
7'-0"	W+8"	L+1'-4"	60" & 66"

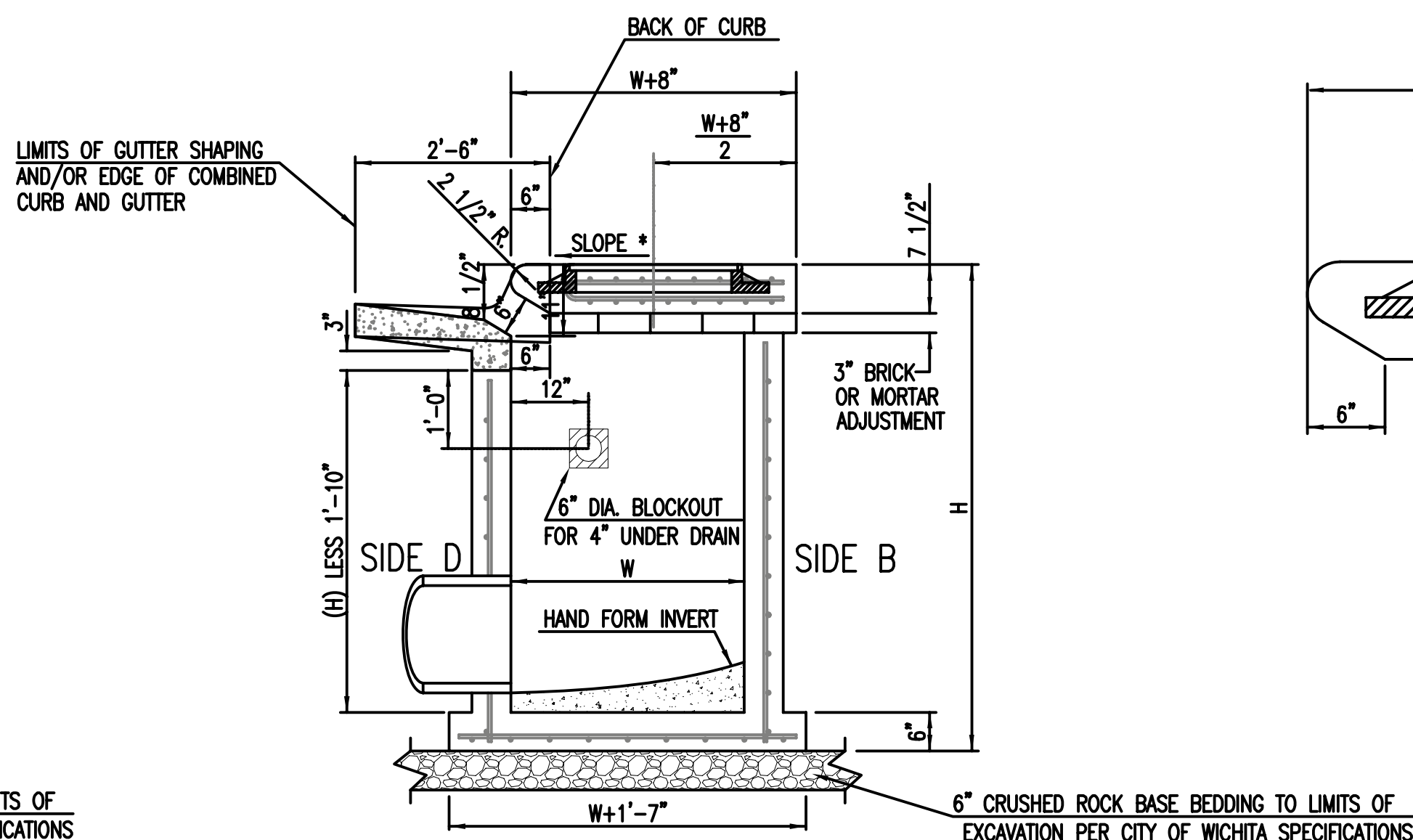
** FOR PIPES PERPENDICULAR TO INLET WALL

GENERAL NOTES

- CONCRETE TOPS TO BE INSTALLED ON THIN MORTAR CUSHION TO INSURE FULL SUPPORT ALONG BRICK. CONCRETE TOPS MAY BE CAST IN PLACE OR PRECAST. CONCRETE USED FOR INLET CONSTRUCTION SHALL CONFORM TO CITY OF WICHITA SPECIFICATIONS FOR CONCRETE PAVEMENT MIX.
- CONTRACTOR SHALL HAVE THE OPTION OF CONSTRUCTING 8" BRICK MASONRY WALLS BETWEEN THE CONCRETE INLET BASE AND TOP OF THIS INLET WHEN W=5'-0" AND H=7'-0" OR LESS.
- INLET INVERT SHALL BE SHAPED WITH 8 SACK SAND MIX CONCRETE TO CREATE FLOW CHANNELS AND TO INCREASE HYDRAULIC EFFICIENCY SUCH THAT THE INLET WILL BE SELF CLEANING BETWEEN ALL INLET AND/OR OUTLET PIPES.
- THE ENDS OF ALL PIPES INSTALLED IN INLETS SHALL BE CUT OFF FLUSH WITH THE INSIDE FACE OF THE INLET WALL.
- INLET FRAME AND COVER TO BE DEETER #2014, EJIW #1936 Z4, OR APPROVED EQUAL.
- CONTRACTOR SHALL REMOVE LIFTING HOOKS AFTER INSTALLATION. RECESSES IN INLET WALL SHALL BE GROUTED FLUSH TO THE INLET WALL WITH HYDRAULIC CEMENT AFTER THE INLET IS IN PLACE. LIFTING HOLES THRU THE INLET WALL WILL NOT BE ACCEPTED.

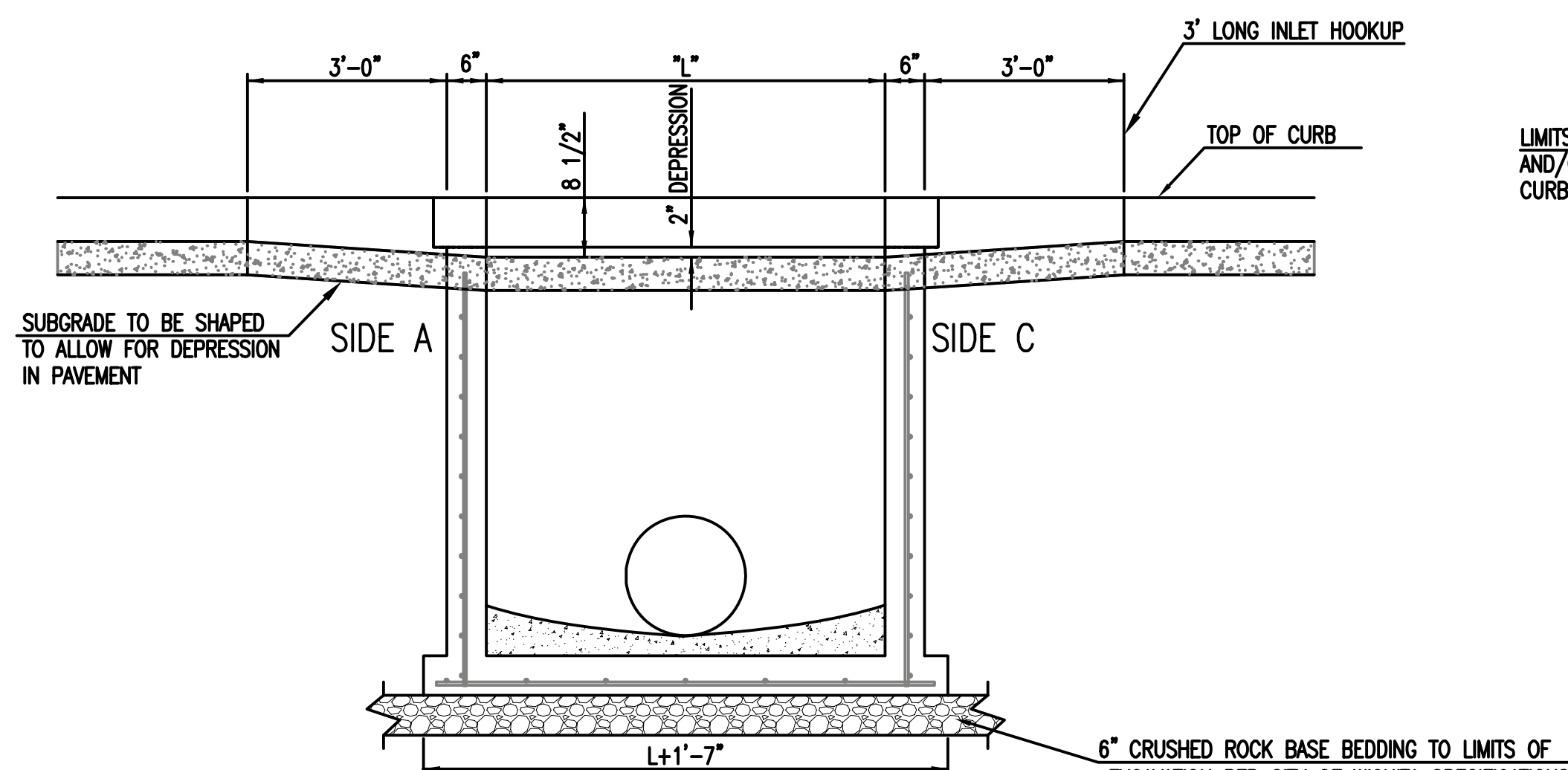
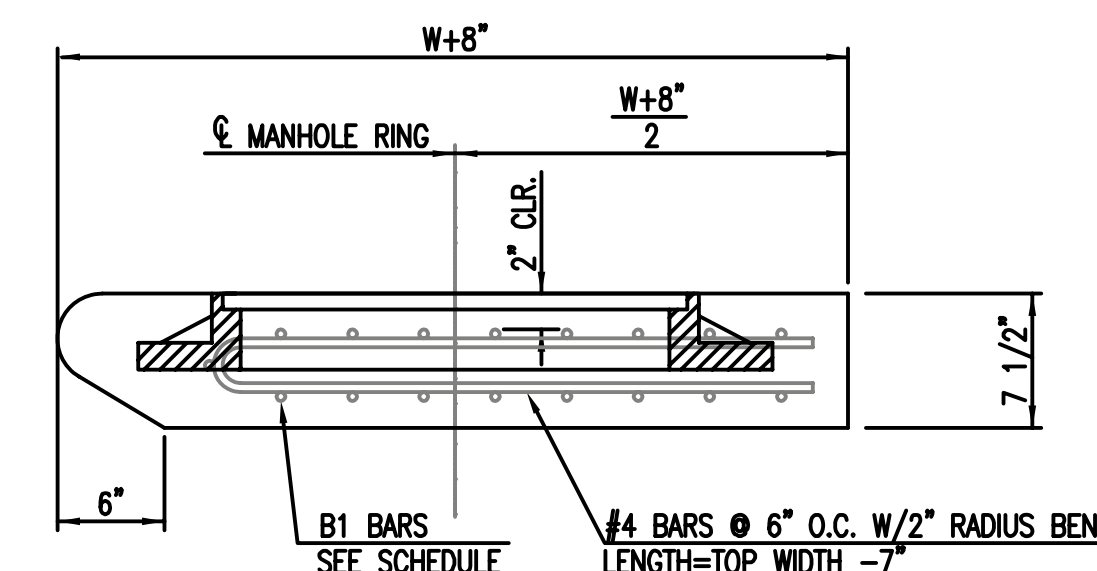


SECTION "A-A"

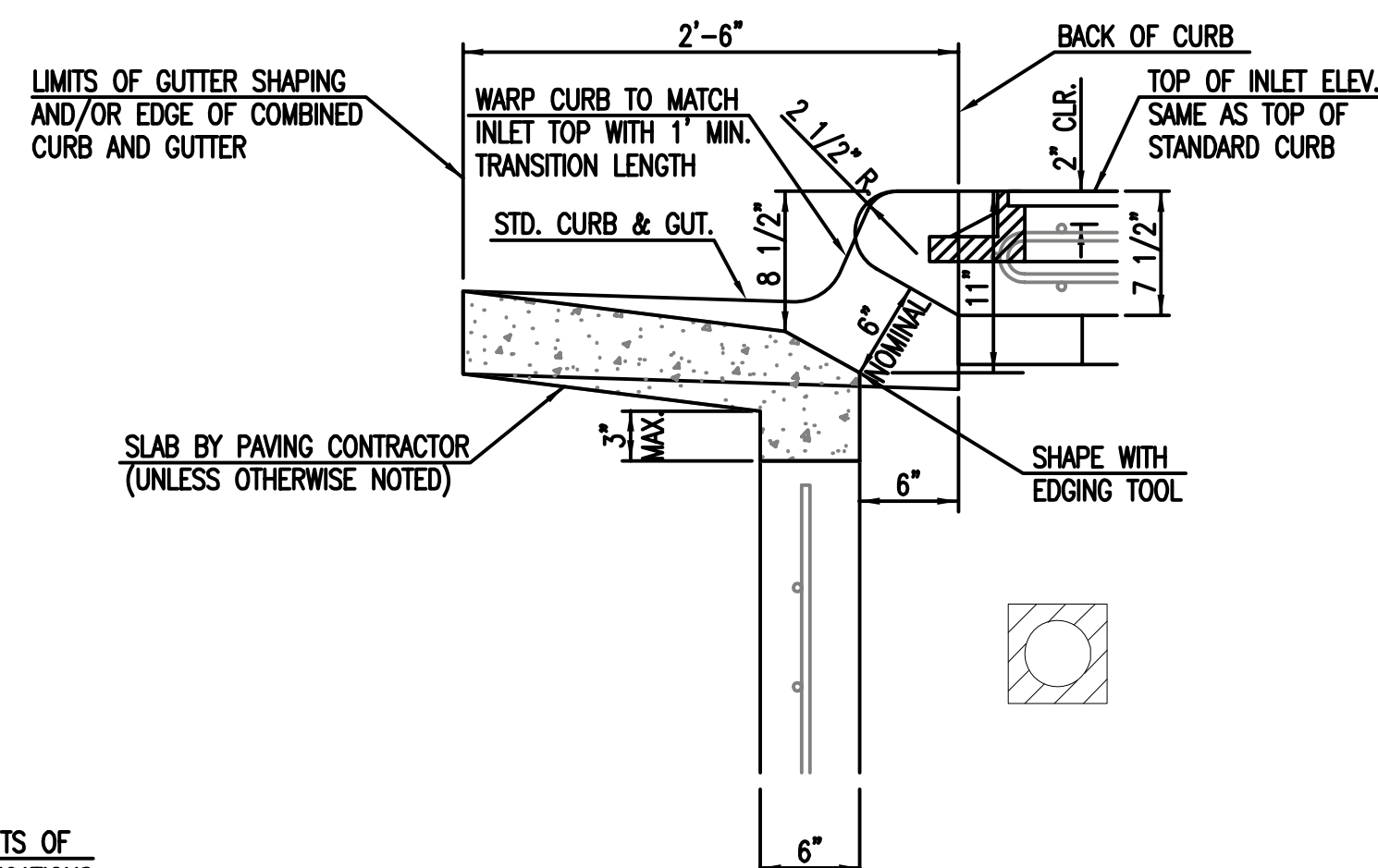


SECTION "C-C"

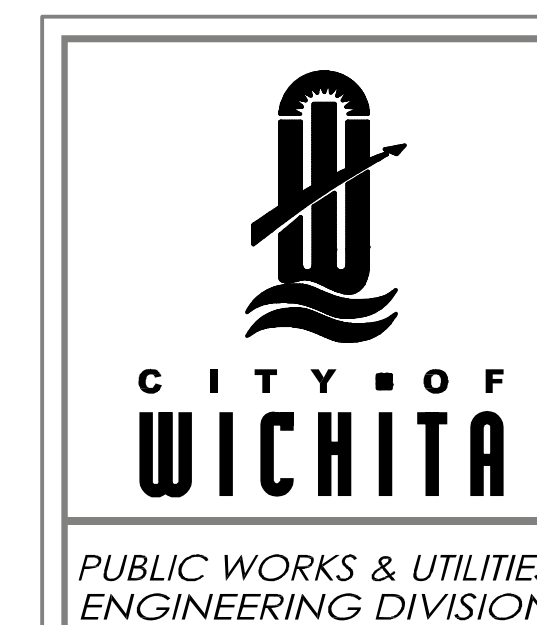
NOTES:
* SLOPE OF INLET TOP TO MATCH SIDEWALK OR PARKING SLOPES WITHIN LIMITS INDICATED.



SECTION "B-B"



SECTION "D-D"



REVISED: MARCH 2015

STANDARD TYPE 1
CURB INLET
5'-0" OR 10'-0" OPENING

CITY ENGINEER
GARY JANZEN, P.E.

PROJECT NUMBER	OCA NUMBER	DATE
----------------	------------	------

CITY ENGINEER'S OFFICE
CITY HALL - SEVENTH FLOOR
455 NORTH MAIN STREET
WICHITA, KANSAS 67202-1620
(316) 268-4501

SHEET

