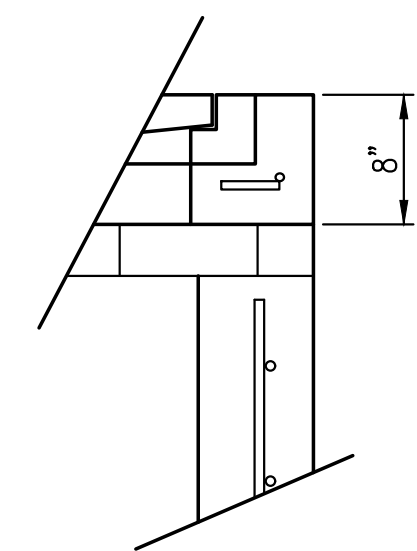
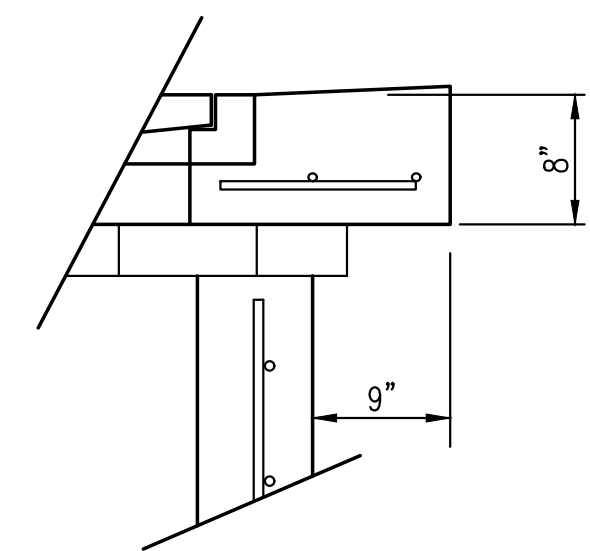


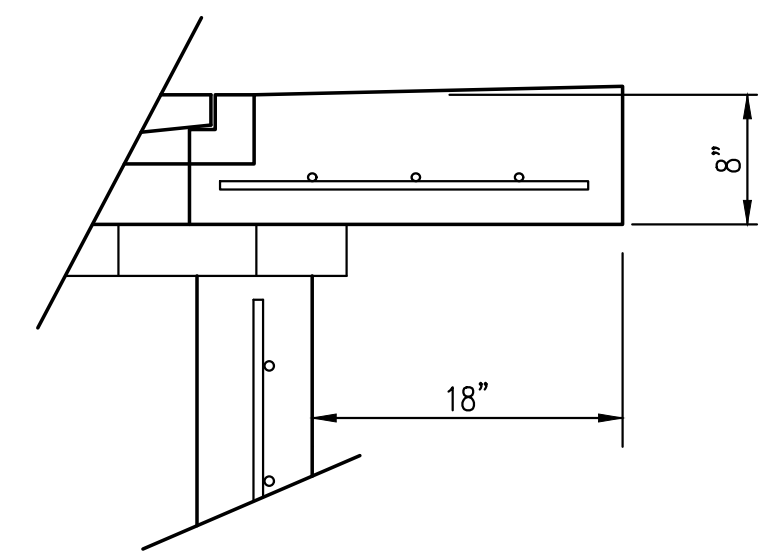
TOP VIEW



FLUSH STYLE TOP
NO APRON



9" APRON



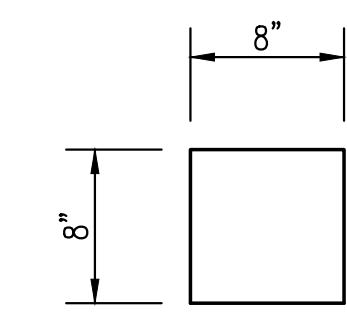
18" APRON

* APRON TO EXTEND ON ALL 4 SIDES OF INLET.
DESIGNER TO DESIGNATE APRON SIZE.

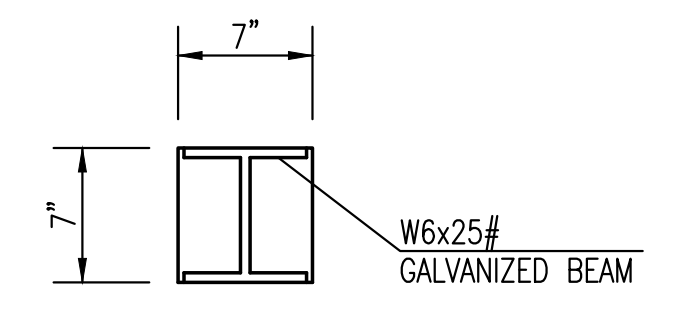
W=4'-4" and L=4' for DOUBLE DROP INLET

The structure(s) on this detail sheet are designed for HS-20 loading at these specific dimensions only. If larger dimensions are required, the ENGINEER shall provide a project specific structure design for approval by the City Engineer's office.

BEAM REQUIRED FOR THIS INLET



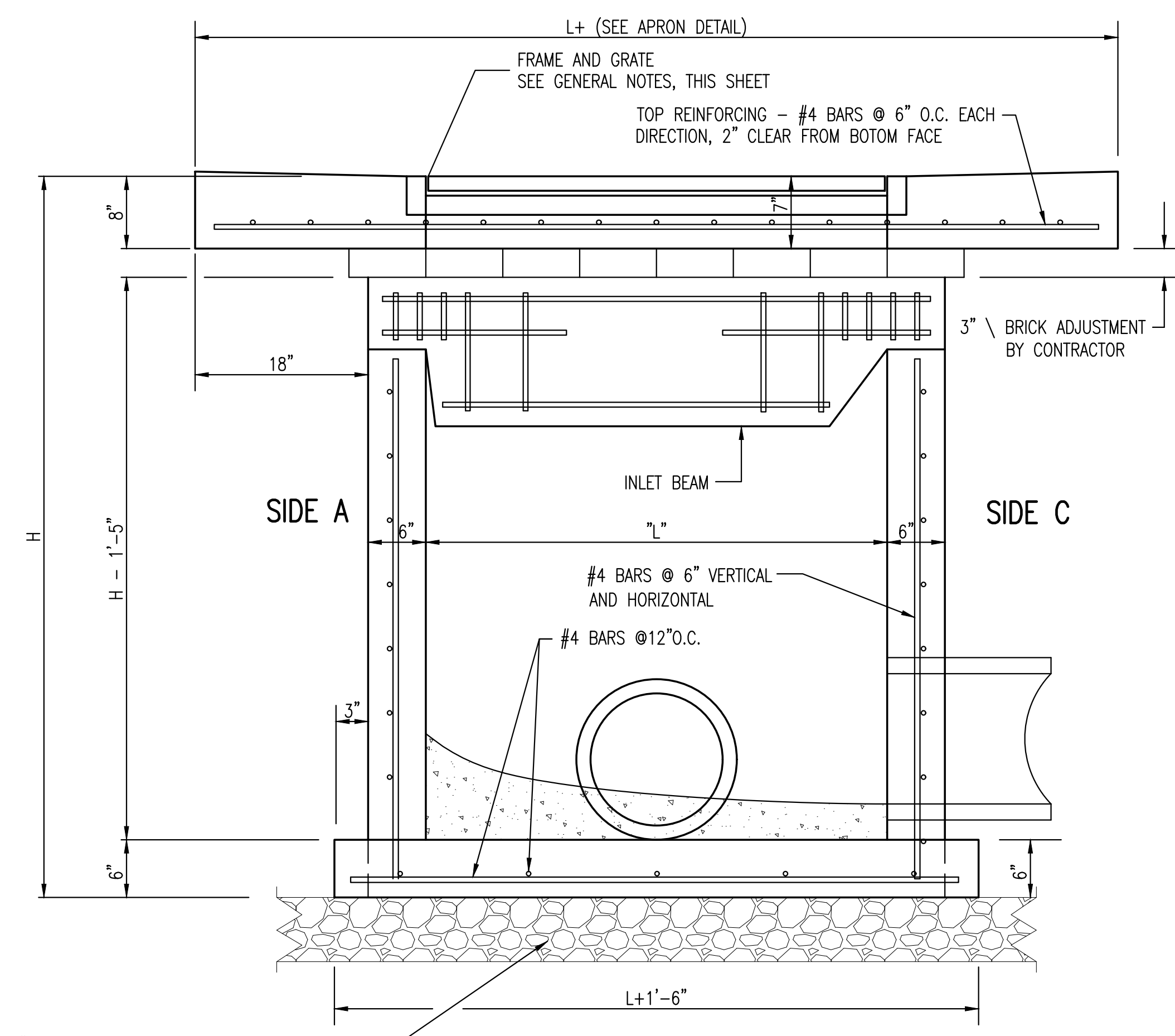
CONCRETE BEAM POCKET



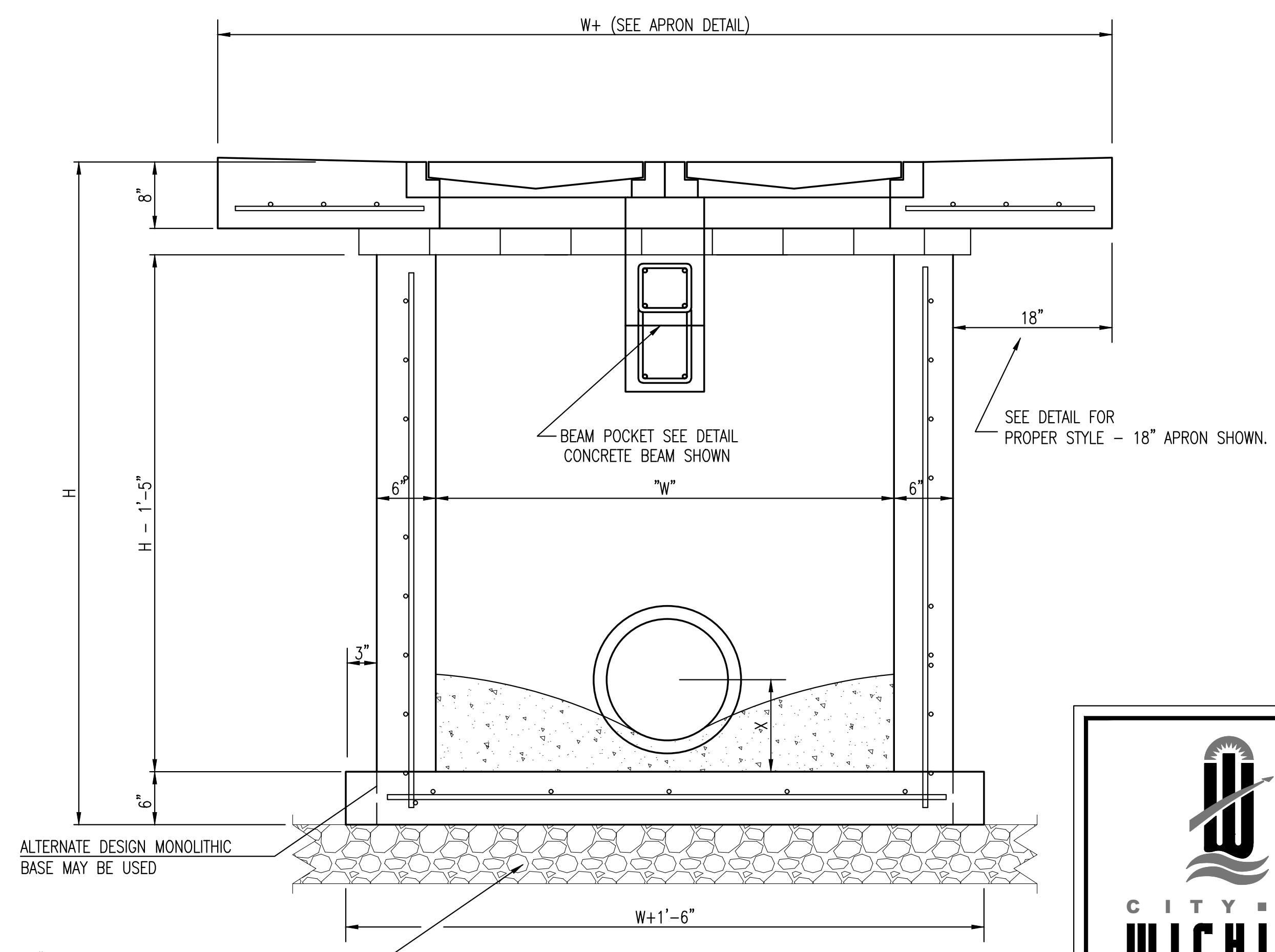
GALV. STEEL BEAM POCKET

GENERAL NOTES

1. GRATE FRAME TO BE INSTALLED ON THIN MORTAR CUSHION TO INSURE FULL SUPPORT ALONG BRICK. CONCRETE USED FOR INLET CONSTRUCTION SHALL CONFORM TO CITY OF WICHITA SPECIFICATIONS FOR CONCRETE PAVEMENT MIX.
2. INLET INVERT SHALL BE SHAPED WITH 8 SACK SAND MIX CONCRETE TO CREATE FLOW CHANNELS AND TO INCREASE HYDRAULIC EFFICIENCY SUCH THAT THE INLET WILL BE SELF CLEANING BETWEEN ALL INLET AND/OR OUTLET PIPES.
3. THE ENDS OF ALL PIPES INSTALLED IN INLETS SHALL BE CUT OFF FLUSH WITH THE INSIDE FACE OF THE INLET WALL.
4. INLET FRAME AND GRATE TO BE DEETER #2433, EJIW #5391-Z1 OR APPROVED EQUAL FOR 2'x2' SINGLE DROP INLET AND DEETER #2434, EJIW #5391 Z3 OR APPROVED EQUAL FOR 2'x4' DOUBLE DROP INLET.
5. CONTRACTOR SHALL REMOVE LIFTING HOOKS AFTER INSTALLATION. RECESSES IN INLET WALL SHALL BE GROUTED FLUSH TO THE INLET WALL WITH HYDRAULIC CEMENT AFTER THE INLET IS IN PLACE. LIFTING HOLES THRU THE INLET WALL WILL NOT BE ACCEPTED.



SECTION "A-A"



SECTION "B-B"

6" CRUSHED ROCK BASE BEDDING TO LIMITS OF EXCAVATION PER CITY OF WICHITA SPECIFICATIONS

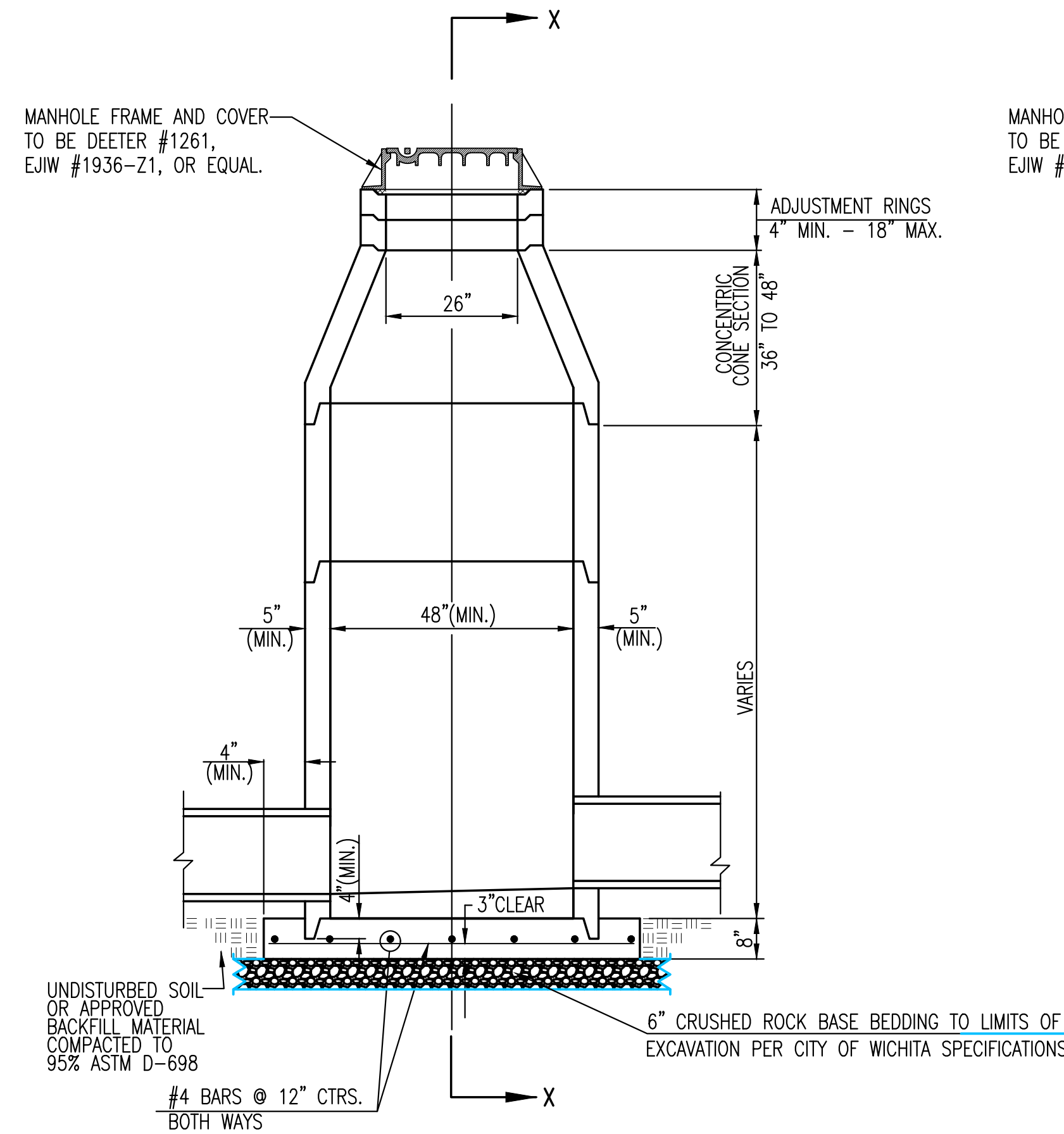
6" CRUSHED ROCK BASE BEDDING TO LIMITS OF EXCAVATION PER CITY OF WICHITA SPECIFICATIONS



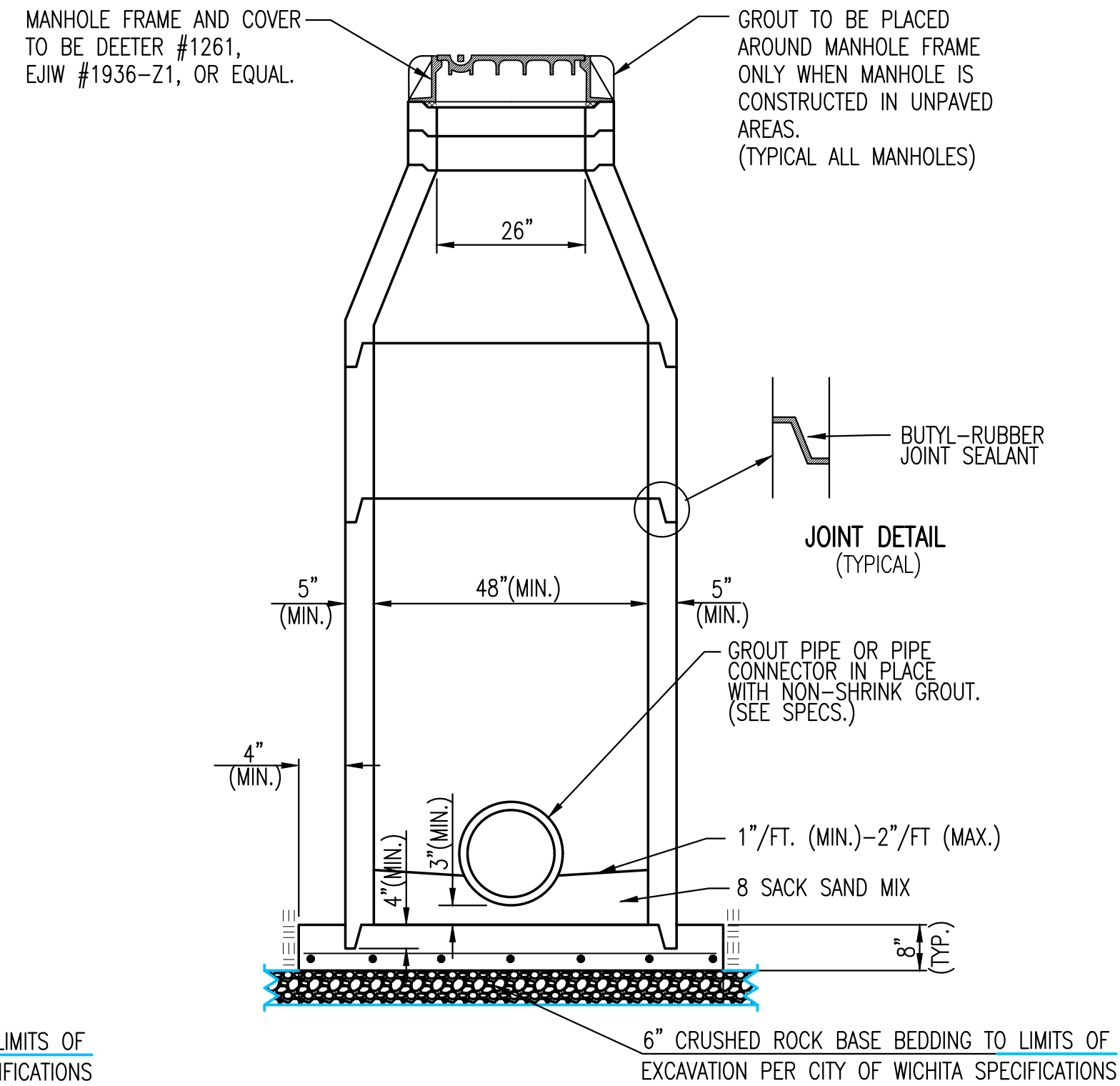
REVISED: MARCH 2015		
DOUBLE DOUBLE DROP INLET WITH BEAM		
CITY ENGINEER GARY JANZEN, P.E..		
PROJECT NUMBER 2021-000676 PPD	OCA NUMBER 133119	DATE APRIL 2021
CITY ENGINEER'S OFFICE CITY HALL - SEVENTH FLOOR 455 NORTH MAIN STREET WICHITA, KANSAS 67202-1620 (316) 268-4501		SHEET 02 OF 09

Saved 04-09-2021 4:39:59 PM by LMIGUEL
 Plot Scale: 1:1 04-09-2021 4:42:54 PM by LUIS MIGUEL
 I:\PROJECTS\2020\2001080752_SPT_Wichita_KS_Webb Road MOB\00 20752 CAD\SHTS\05 Civil\Sws\PPD\SW-202-Double-Double Drop Inlet

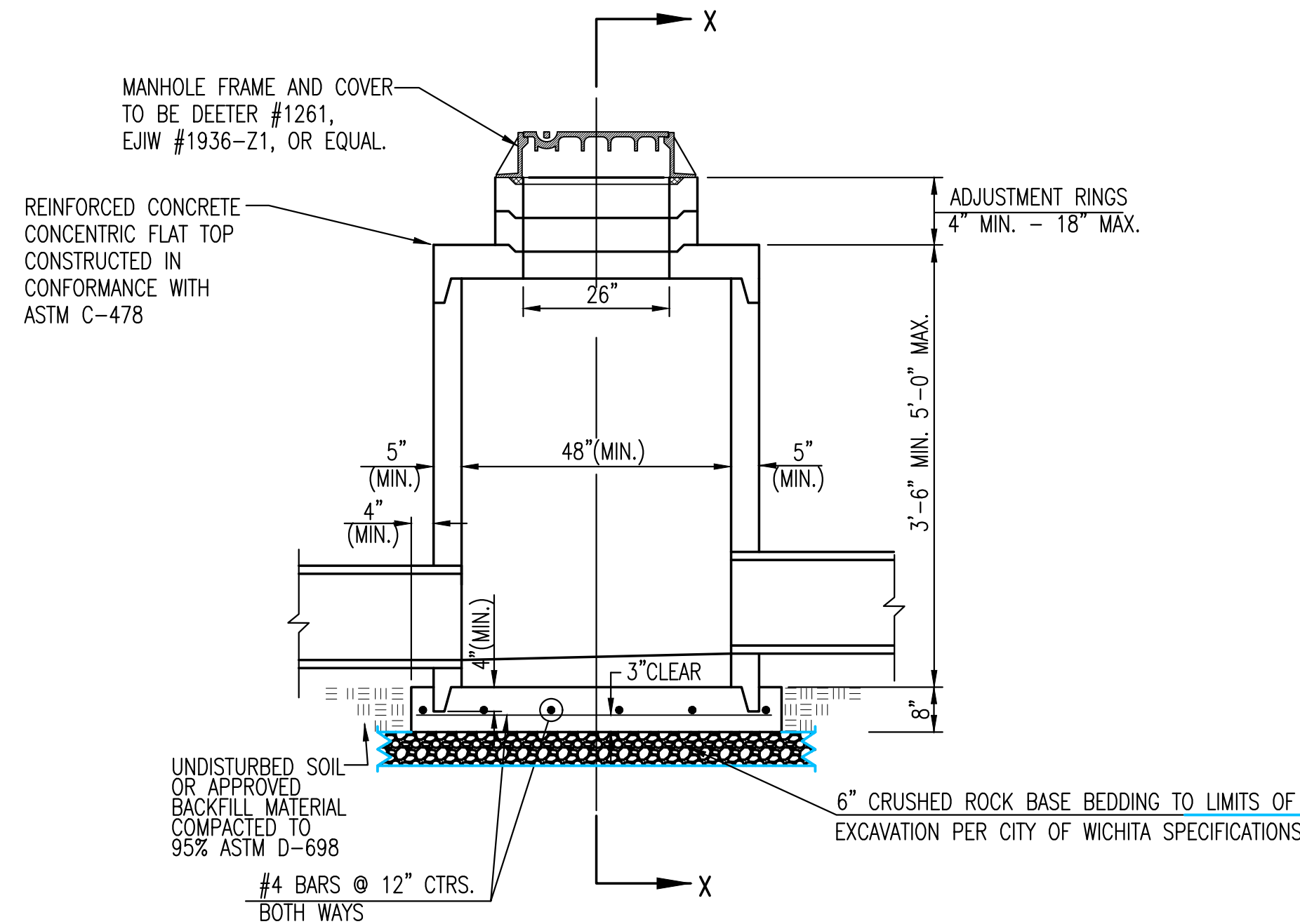
I:\PROJECTS\2020\2001080752_SPT_Wichita_KS_Webb Road MOB\00 20752 CAD\SHTS\05 Civil\Sws\PPD\SW-202-Double-Double Drop Inlet.dwg



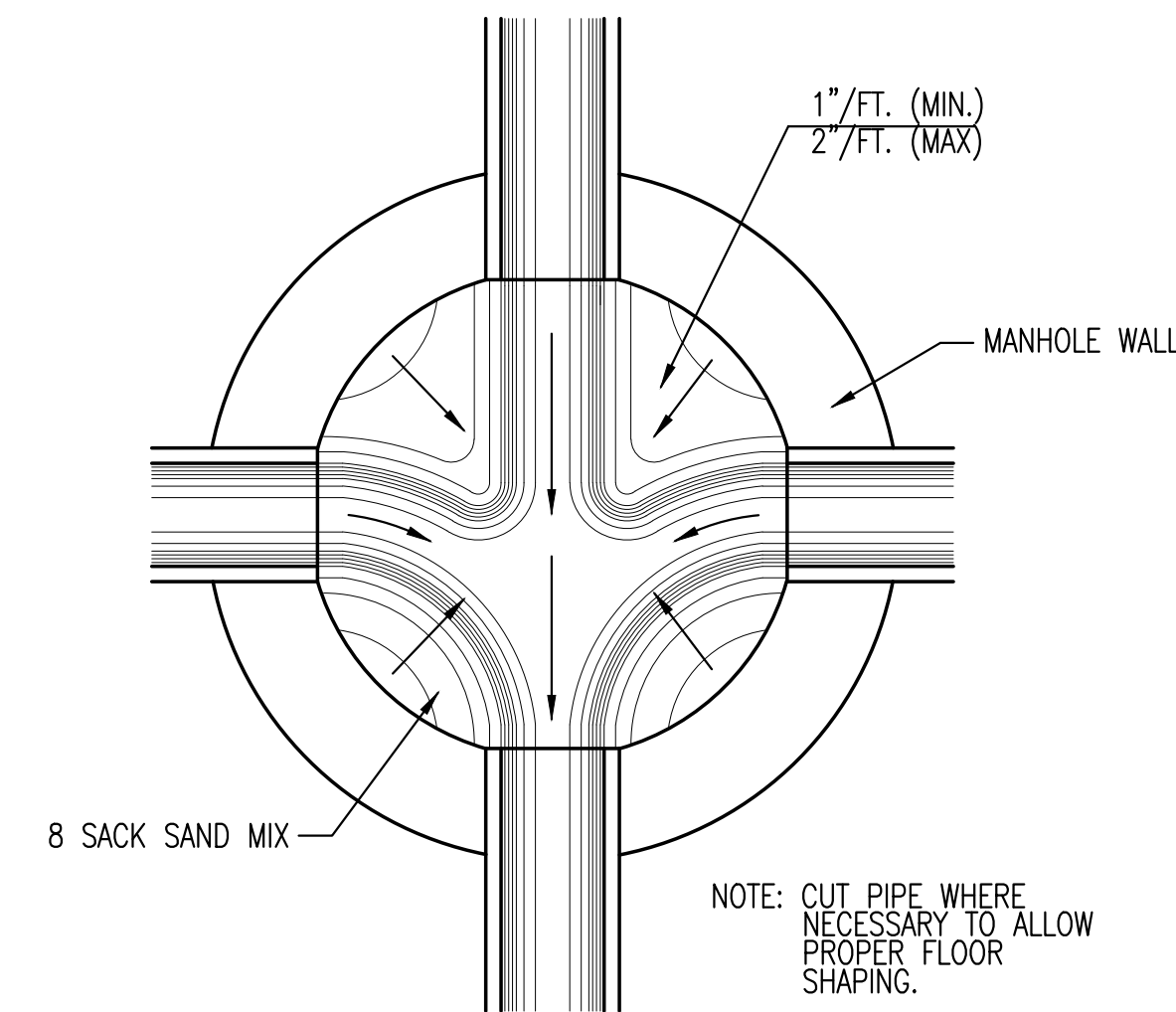
PRECAST STANDARD MANHOLE TYPE "A"



SECTION X-X (TYPICAL)



PRECAST SHALLOW MANHOLE TYPE "B"



TYPICAL MANHOLE FLOOR SHAPING

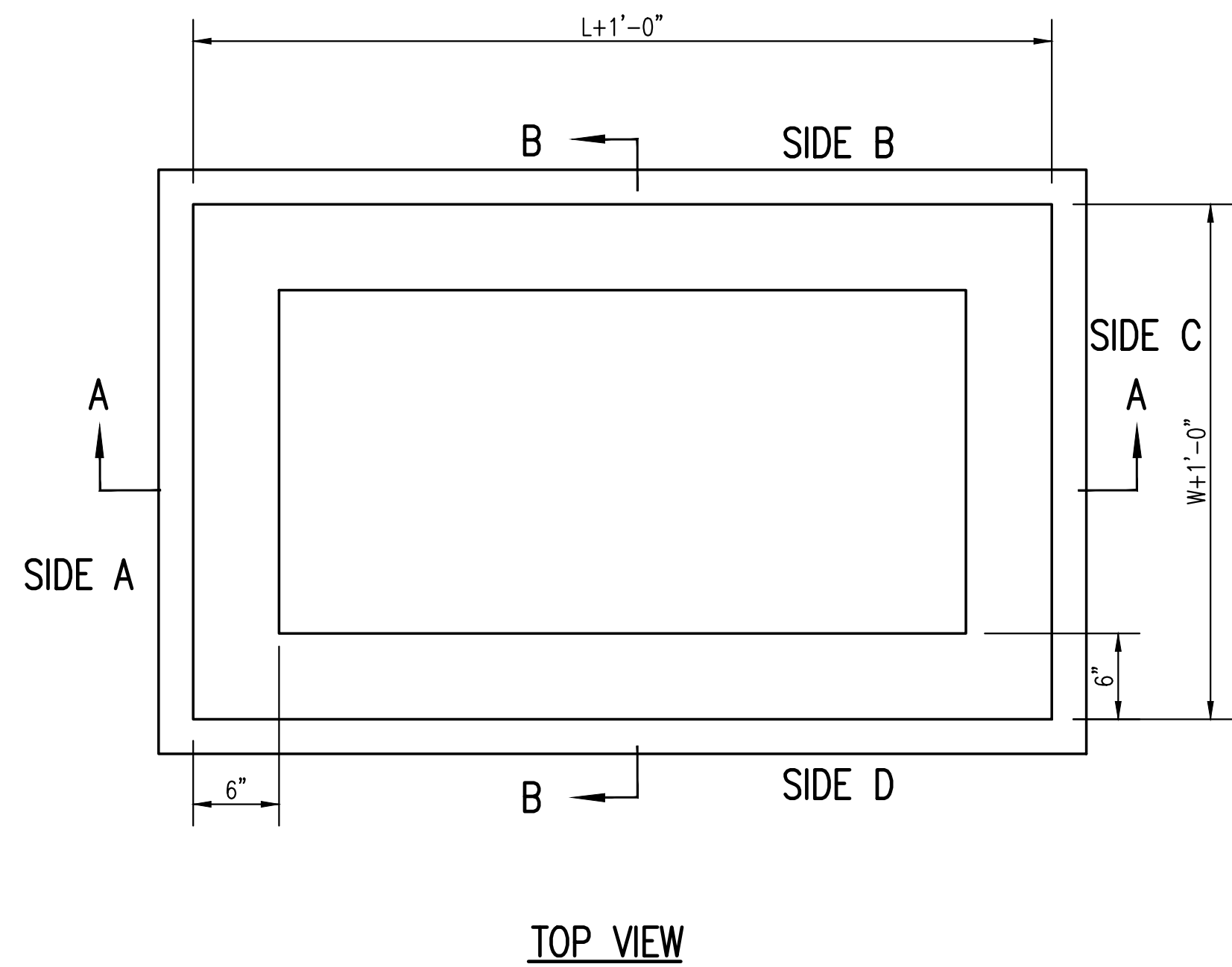
GENERAL NOTES

- IF, IN THE OPINION OF THE ENGINEER, THE MANHOLE SUBGRADE APPEARS UNSTABLE, THE CONTRACTOR WILL HAVE THE OPTION TO COMPACT SUBGRADE AS SHOWN OR INCREASE THE THICKNESS OF THE MANHOLE BASE AS DIRECTED BY THE ENGINEER.
- STEEL REINFORCING WILL BE REQUIRED IN ALL MANHOLE BASES.
- ALL MANHOLE CONSTRUCTION SHALL BE WATER TIGHT.
- TOP OF MANHOLE FLOOR SLAB SHALL BE AT LEAST 3 INCHES BELOW THE FLOW LINE OF THE OUTLET PIPE TO INSURE SUFFICIENT MINIMUM THICKNESS OF SHAPED INVERT.
- ALL PRECAST CONCRETE MANHOLE SECTIONS SHALL CONFORM TO THE LATEST REVISION OF ASTM C-478 AS MODIFIED BY THE SPECIFICATIONS.
- CONCRETE USED FOR MANHOLE CONSTRUCTION SHALL CONFORM TO CITY OF WICHITA SPECIFICATIONS FOR CONCRETE PAVEMENT MIX.
- PRECAST MANHOLES SHALL BE SET AT LEAST 4 INCHES INTO MANHOLE BASE.
- MANHOLES WITH PIPE SIZES 24" AND LARGER SHALL HAVE 5 FOOT INSIDE DIAMETER (MIN.)
- MANHOLES WITH PRECAST BASES MAY BE USED AT THE CONTRACTORS OPTION. THESE MANHOLES SHALL HAVE AN 8" MINIMUM BASE THICKNESS AND SHALL BE PLACED ON AN 8" MIN. CRUSHED ROCK BASE. PIPES SHALL BE ENCASED WITH CRUSHED ROCK TO AT LEAST 3 FEET FROM THE MANHOLE WALL.
- CONTRACTOR SHALL REMOVE LIFTING HOOKS AFTER INSTALLATION. RECESSES IN MANHOLE WALL SHALL BE GROUTED FLUSH TO THE MANHOLE WALL WITH HYDRAULIC CEMENT AFTER THE MANHOLE IS IN PLACE. LIFTING HOLES THRU THE MANHOLE WALL WILL NOT BE ACCEPTED.
- THE ENDS OF ALL PIPES IN MANHOLES SHALL BE CUT OFF FLUSH WITH THE INSIDE FACE OF THE MANHOLE WALL.
- MANHOLE INVERT SHALL BE SHAPED WITH 8 SACK SAND MIX CONCRETE TO CREATE FLOW CHANNELS AND TO INCREASE HYDRAULIC EFFICIENCY SUCH THAT THE MANHOLE WILL BE SELF CLEANING BETWEEN ALL INLET AND/OR OUTLET PIPES.
- MANHOLE FRAME AND COVER TO BE DEETER #1261, EJIW #1936-Z1, OR APPROVED EQUAL, SEE SW-303.
- FOR FLAT GRATED INLET APPLICATION, GRATE TO BE DEETER #1933, EJIW #1205 MDI, OR APPROVED EQUAL.
- FOR BEEHIVE GRATE APPLICATION, GRATE TO BE DEETER #4495, EJIW #120545, OR APPROVED EQUAL.

CITY OF WICHITA
PUBLIC WORKS & UTILITIES
ENGINEERING DIVISION

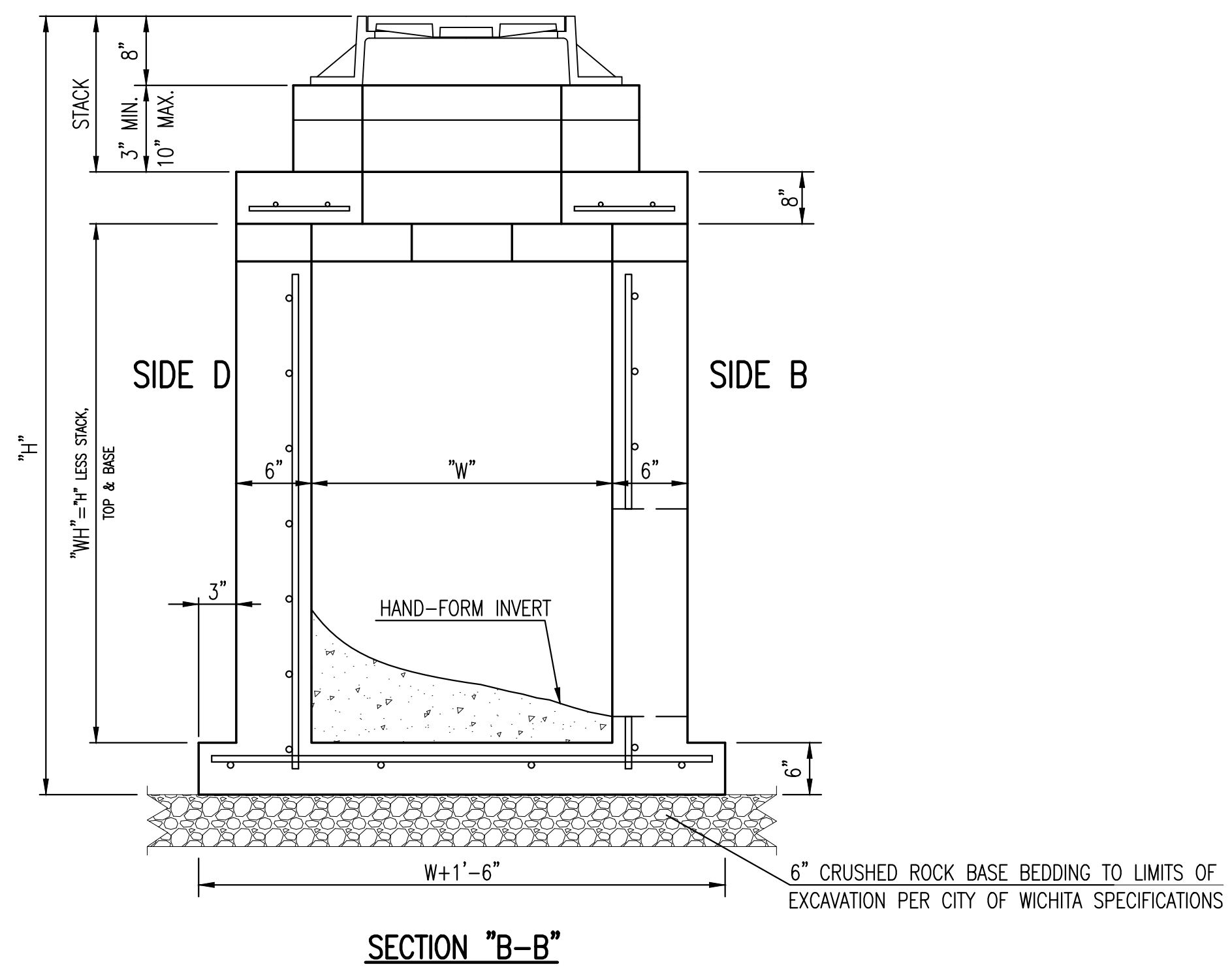
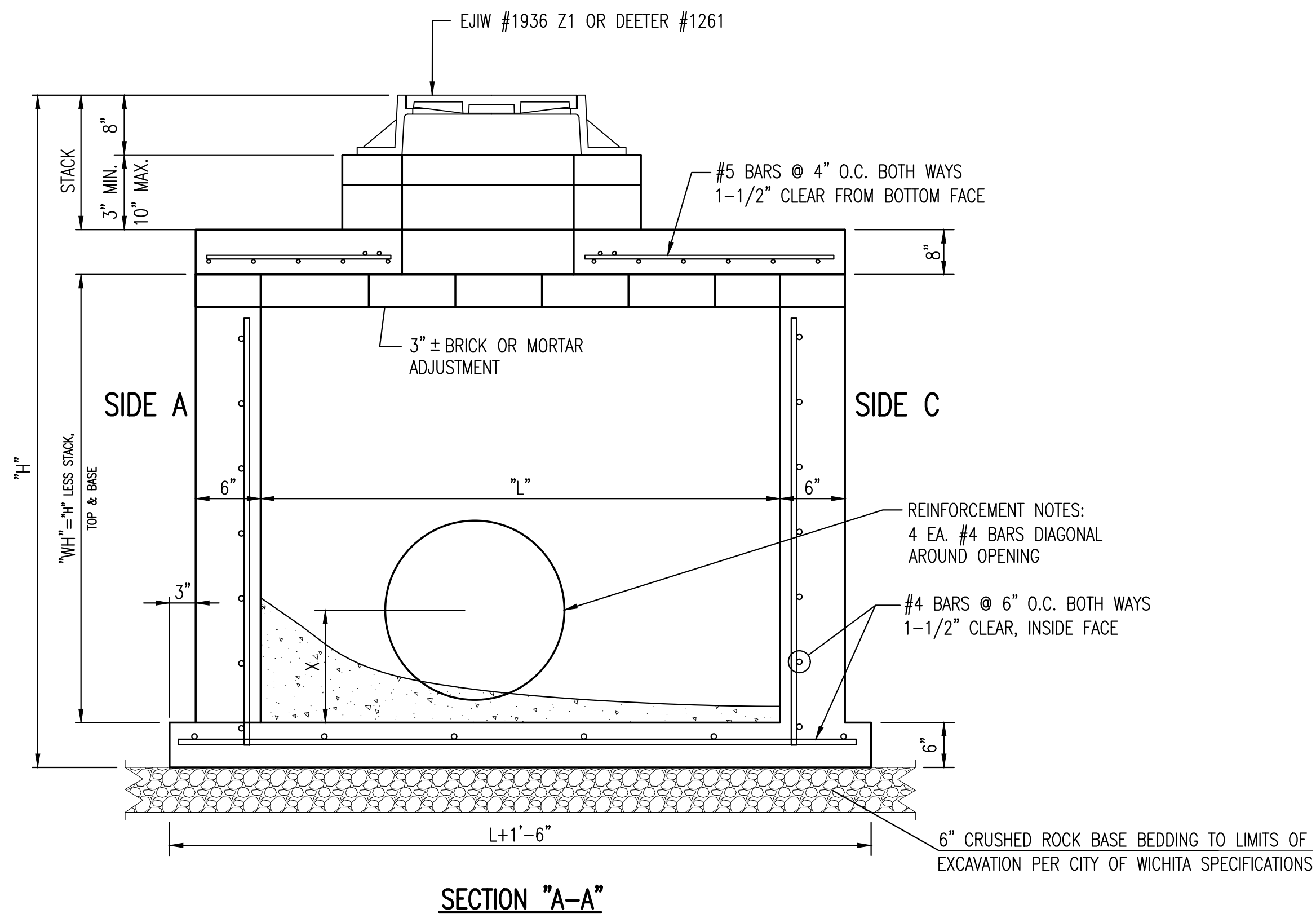
REVISED: MARCH 2015		
PRECAST CONCRETE MANHOLE (STORM SEWER)		
CITY ENGINEER GARY JANZEN, P.E.		
PROJECT NUMBER 2021-000676 PPD	OCA NUMBER 133119	DATE APRIL 2021
CITY ENGINEER'S OFFICE CITY HALL - SEVENTH FLOOR 455 NORTH MAIN STREET WICHITA, KANSAS 67202-1620 (316) 268-4501		SHEET 03 OF 09

Saved 04-09-2021 4:40:05 PM by LMIGUEL
 Plot Scale: 1:1 04-09-2021 4:43:17 PM by LMIGUEL
 I:\PROJECTS\2020\2001080752_SPT_Wichita, KS_Webb Road MOB\00 20752 CAD\SHTS\05 Civil\Sws\PPD\SW-302-Reinf Conc Manhole



GENERAL NOTES

1. GRATE FRAME TO BE INSTALLED ON THIN MORTAR CUSHION TO INSURE FULL SUPPORT ALONG BRICK. CONCRETE USED FOR INLET CONSTRUCTION SHALL CONFORM TO CITY OF WICHITA SPECIFICATIONS FOR CONCRETE PAVEMENT MIX.
2. INLET INVERT SHALL BE SHAPED WITH 8 SACK SAND MIX CONCRETE TO CREATE FLOW CHANNELS AND TO INCREASE HYDRAULIC EFFICIENCY SUCH THAT THE INLET WILL BE SELF CLEANING BETWEEN ALL INLET AND/OR OUTLET PIPES.
3. THE ENDS OF ALL PIPES INSTALLED IN INLETS SHALL BE CUT OFF FLUSH WITH THE INSIDE FACE OF THE INLET WALL.
4. INLET FRAME AND GRATE TO BE DEETER #1261, EJIW #1936-Z1 OR APPROVED EQUAL, SEE SW-303.
5. CONTRACTOR SHALL REMOVE LIFTING HOOKS AFTER INSTALLATION. RECESSES IN MANHOLE WALL SHALL BE GROUTED FLUSH TO THE MANHOLE WALL WITH HYDRAULIC CEMENT AFTER THE MANHOLE IS IN PLACE. LIFTING HOLES THRU THE MANHOLE WALL WILL NOT BE ACCEPTED.

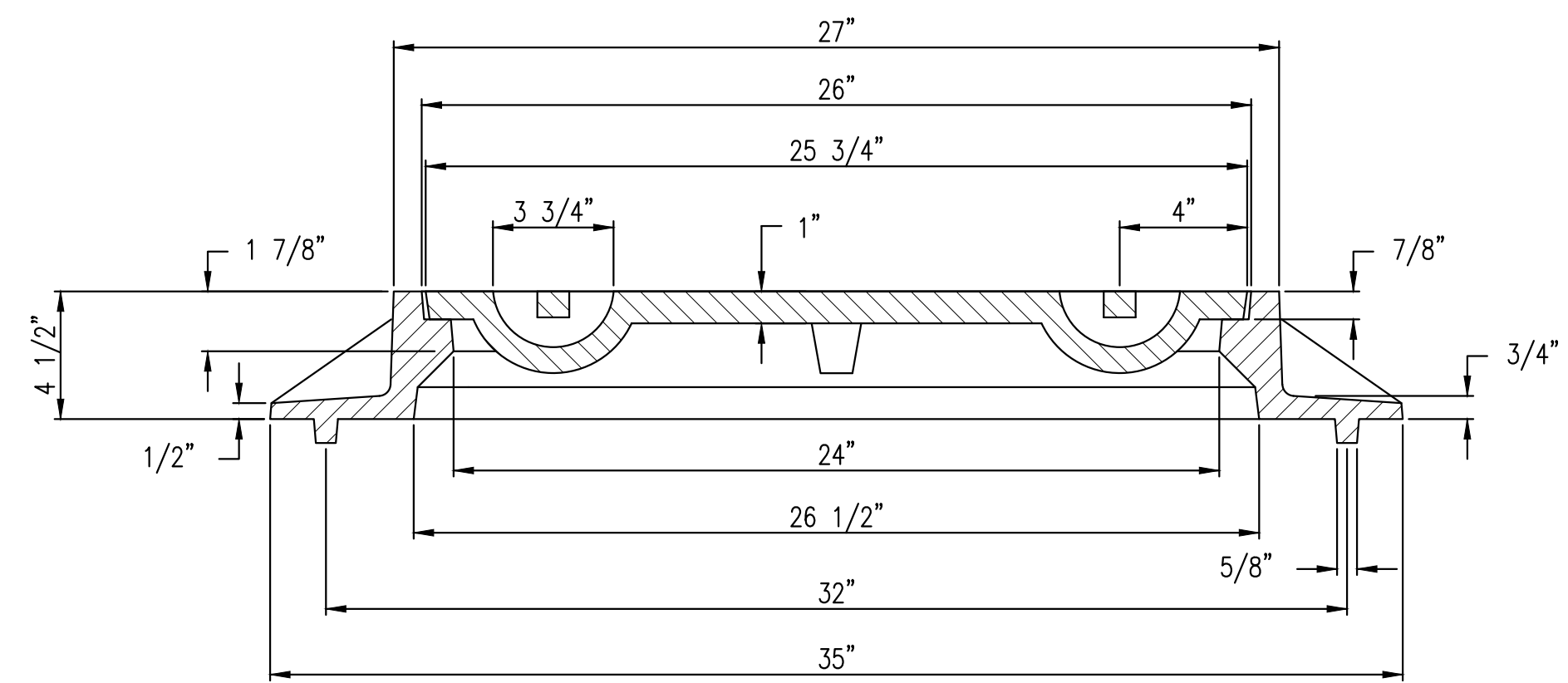
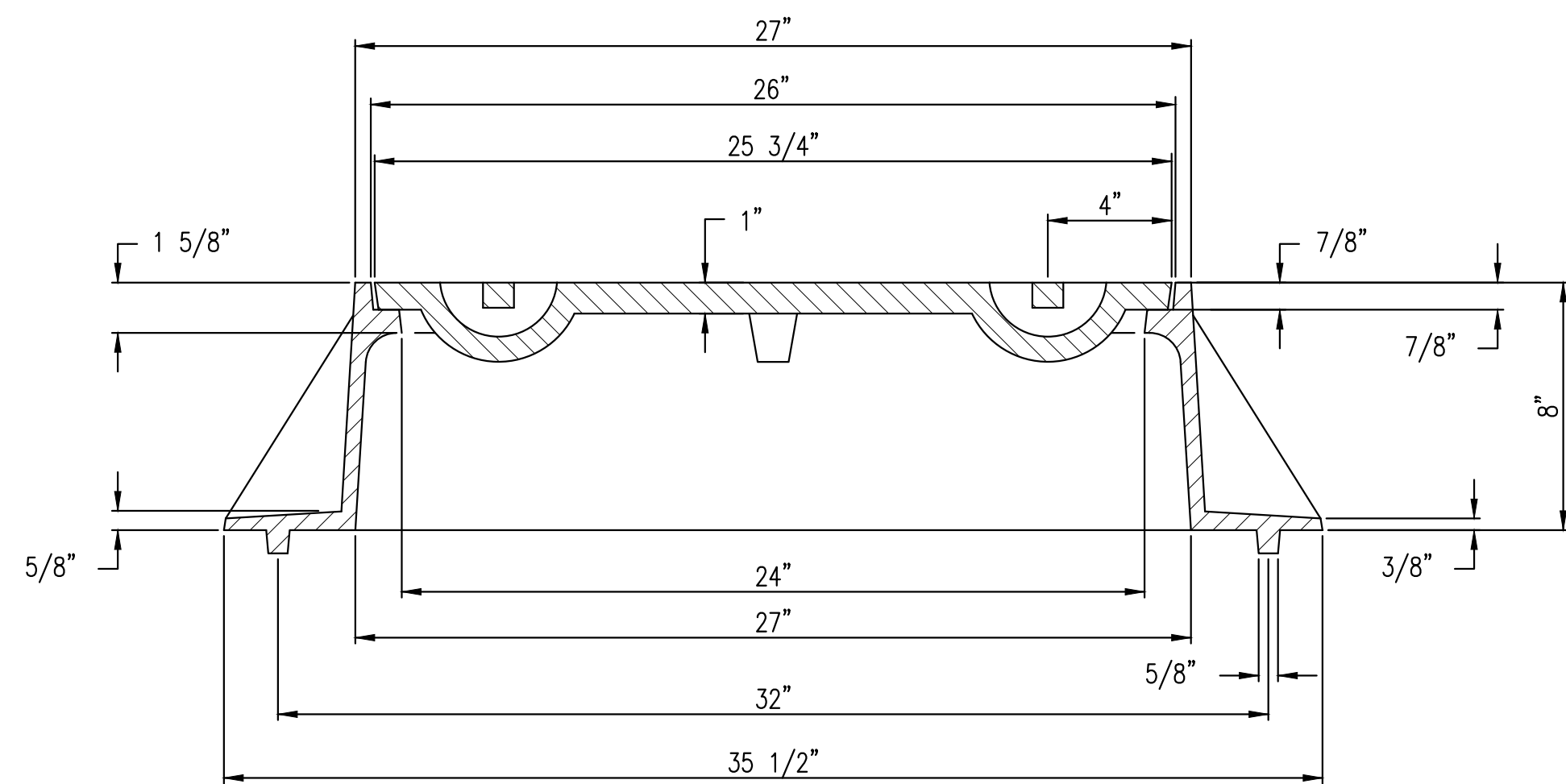
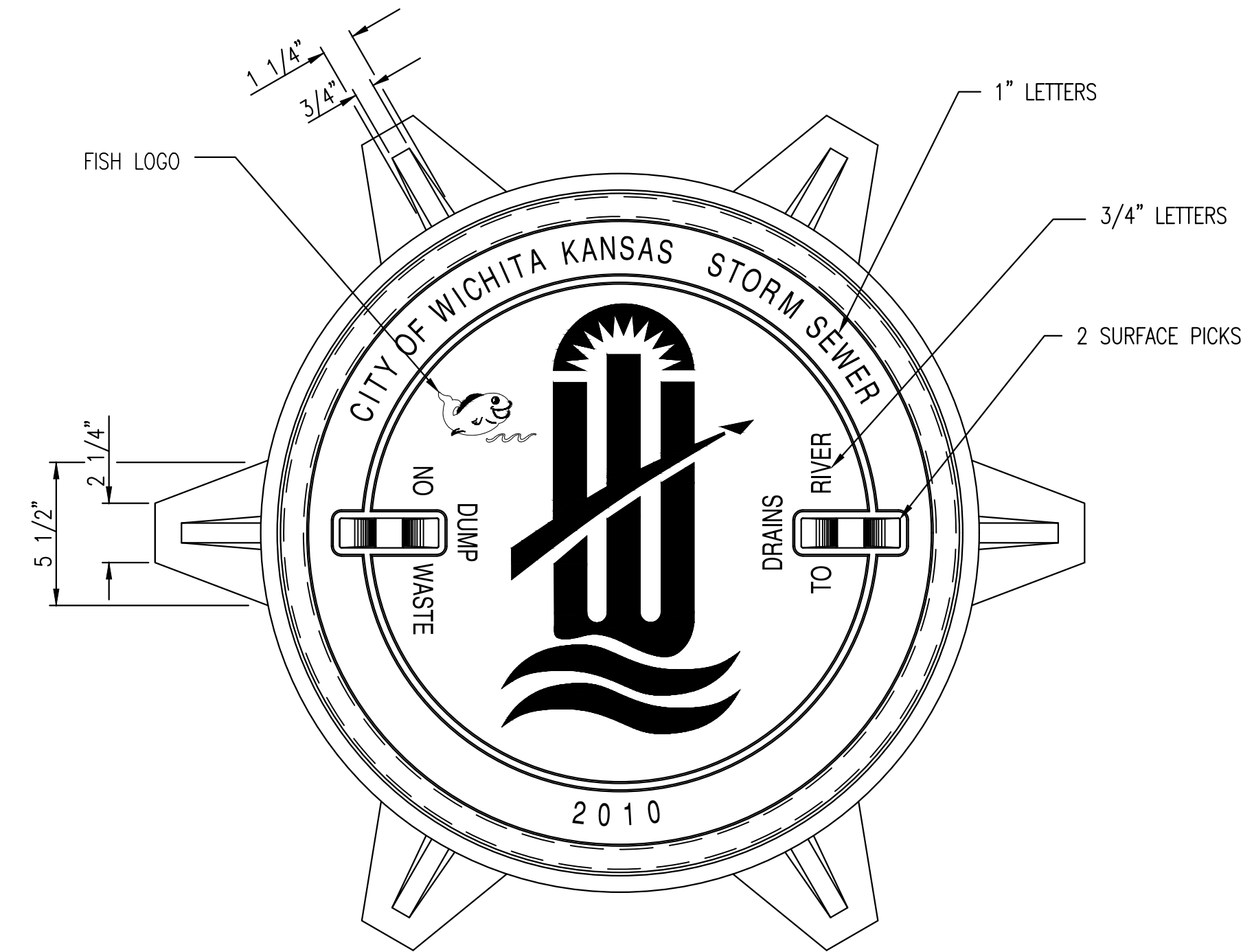
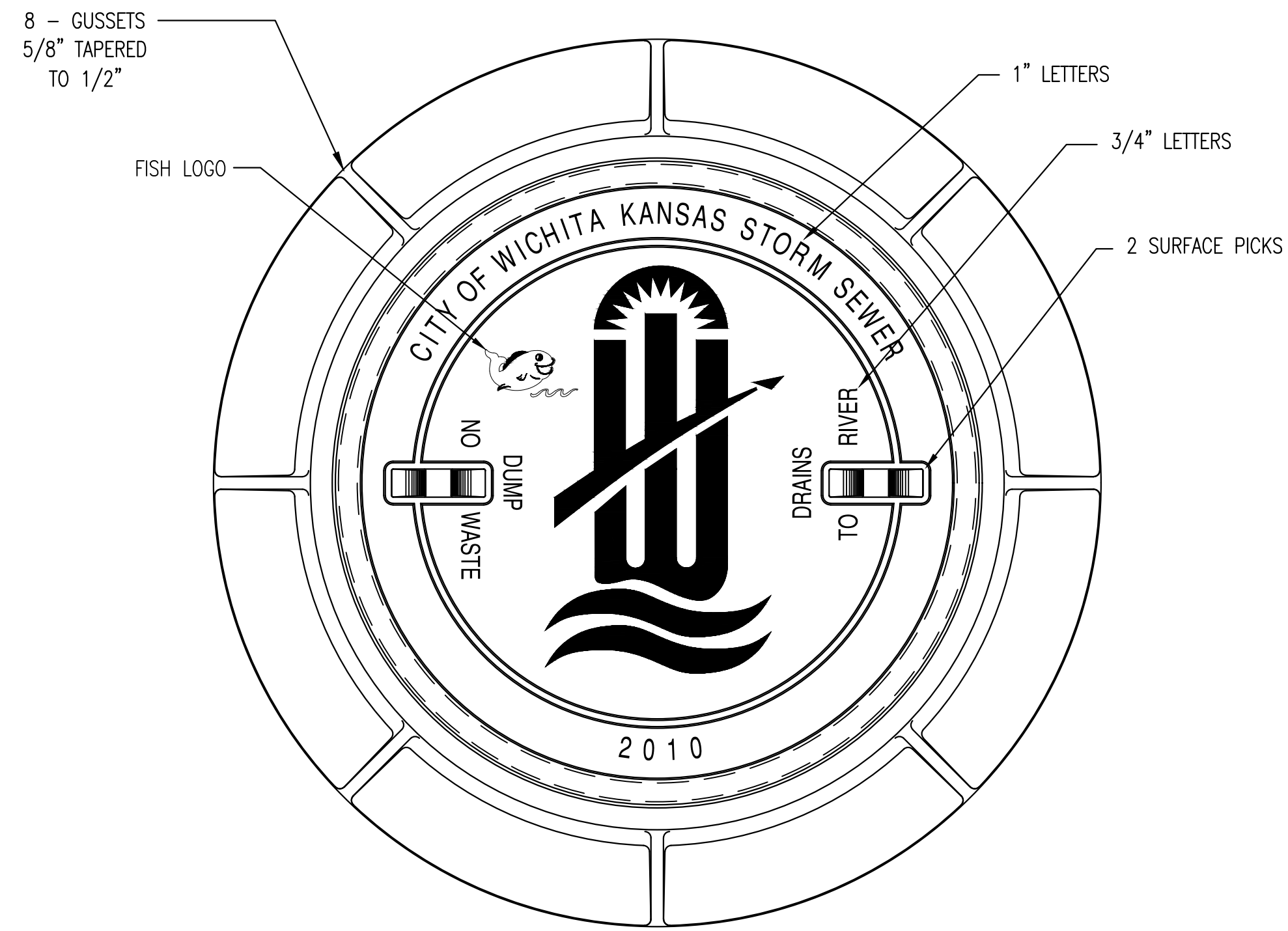


REINFORCED CONCRETE MANHOLE (STORM SEWER)		
CITY ENGINEER GARY JANZEN, P.E.		
PROJECT NUMBER 2021-000676 PPD	OCA NUMBER 133119	DATE APRIL 2021
CITY ENGINEER'S OFFICE CITY HALL - SEVENTH FLOOR 455 NORTH MAIN STREET WICHITA, KANSAS 67202-1620 (316) 268-4501		SHEET 04 OF 09

REVISED: MARCH 2015

I:\PROJECTS\2020\2001080752_SPT_Wichita, KS_Webb Road MOB\00 20752 CAD\SHTS\05 Civil\Sws\PPD\SW-302-Reinf Conc Manhole.dwg

SW-302

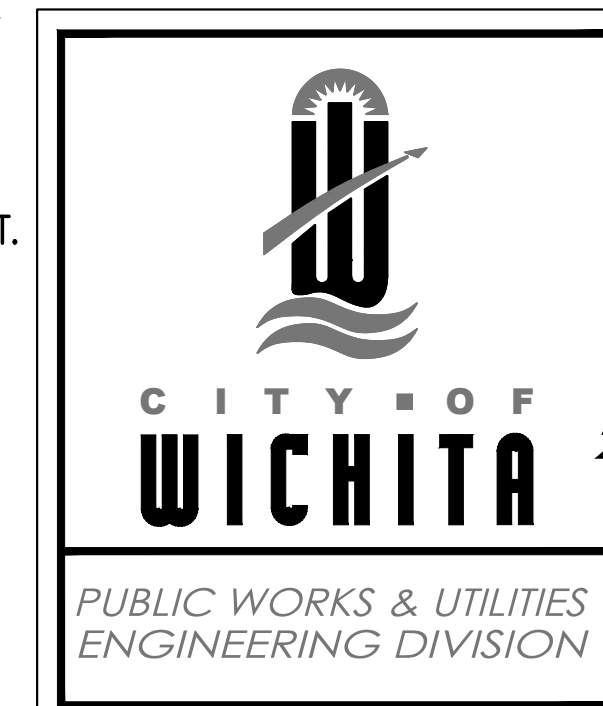


MANHOLE FRAME
DEETER #1261 OR EJIW #1936-Z1

- NOTE:
1. FURNISHED WITH MACHINED HORIZONTAL BEARING SURFACE.
 2. COVER TO BE DEETER #1261 OR EJIW #1936A.

INLET FRAME
DEETER #2014 OR EJIW #1936-Z4

- NOTE:
1. FURNISHED WITH MACHINED HORIZONTAL BEARING SURFACES.
 2. NOT TO BE USED UNDER PAVEMENT.
 3. COVER TO BE DEETER #1261 OR EJIW #1936A.



MANHOLE/INLET FRAME AND COVER (STORM SEWER)		
CITY ENGINEER GARY L. JANZEN, P.E.		
PROJECT NUMBER 2021-000676 PPD	OCA NUMBER 133119	DATE APRIL 2021
CITY ENGINEER'S OFFICE CITY HALL - SEVENTH FLOOR 455 NORTH MAIN STREET WICHITA, KANSAS 67202-1620 (316) 268-4501		SHEET 05 OF 09

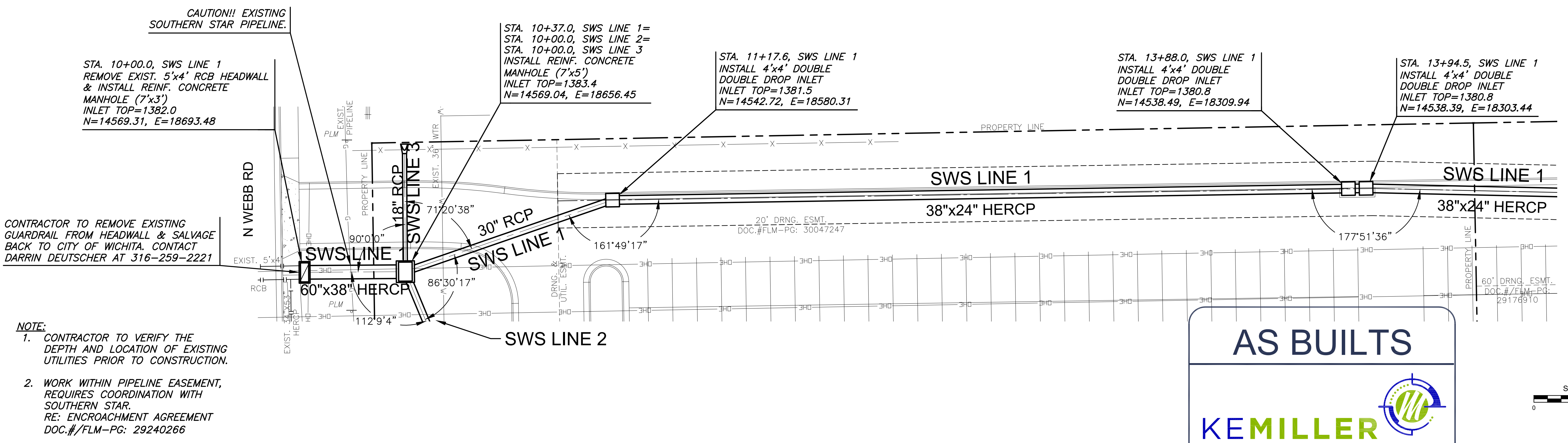
©2021 MKEC Engineering All Rights Reserved
www.mkec.com
These drawings and their contents, including, but not limited to, all concepts, designs, & ideas are the exclusive property of MKEC Engineering (MKEC), and may not be used or reproduced in any way without the express consent of MKEC.

SWS LINE 1

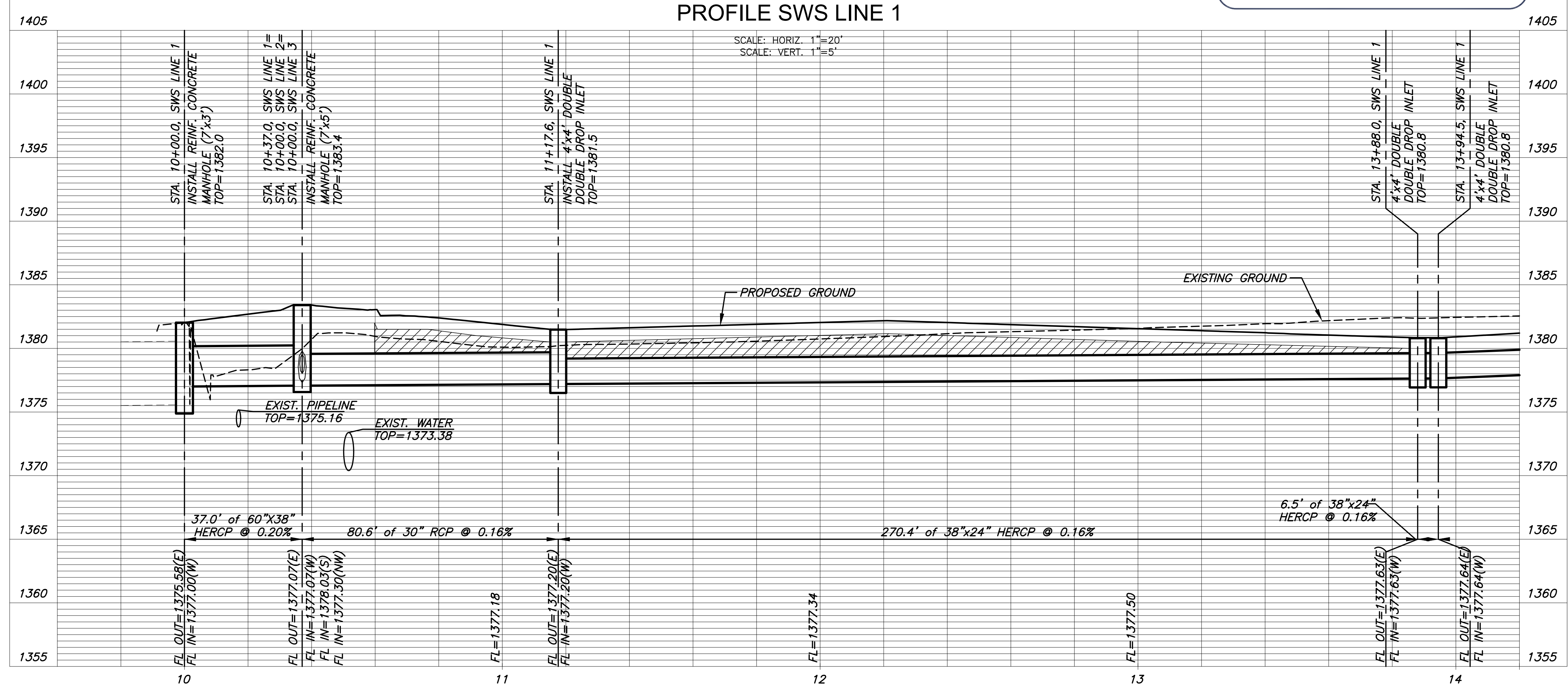
PROJECT NO.	2021-000676 PPD	
DATE	APRIL 2021	
SCALE	1"=20'	
DESIGNED	DRAWN	CHECKED
SPE	LM	SPE

NO.	REVISION	DATE

I:\PROJECTS\2020\2021\060732_SPT_WICHITA_KS_WEBB ROAD\JOB\000_20742_CADD\SHOTS\05_CIVIL\SWS\PPD\20742_SWS_LINE 01.DWG
PLOTED: Friday, April 09, 2021 @ 08:13PM




**PLAN SWS LINE 1
PROFILE SWS LINE 1**



I:\PROJECTS\2020\2001\060732_SPT_WICHITA_KS_WEBB ROAD\MOB\000_20732_CADD\SHOTS\05_CIVIL\SWS\PPD\20732_SWS LINE 01.DWG

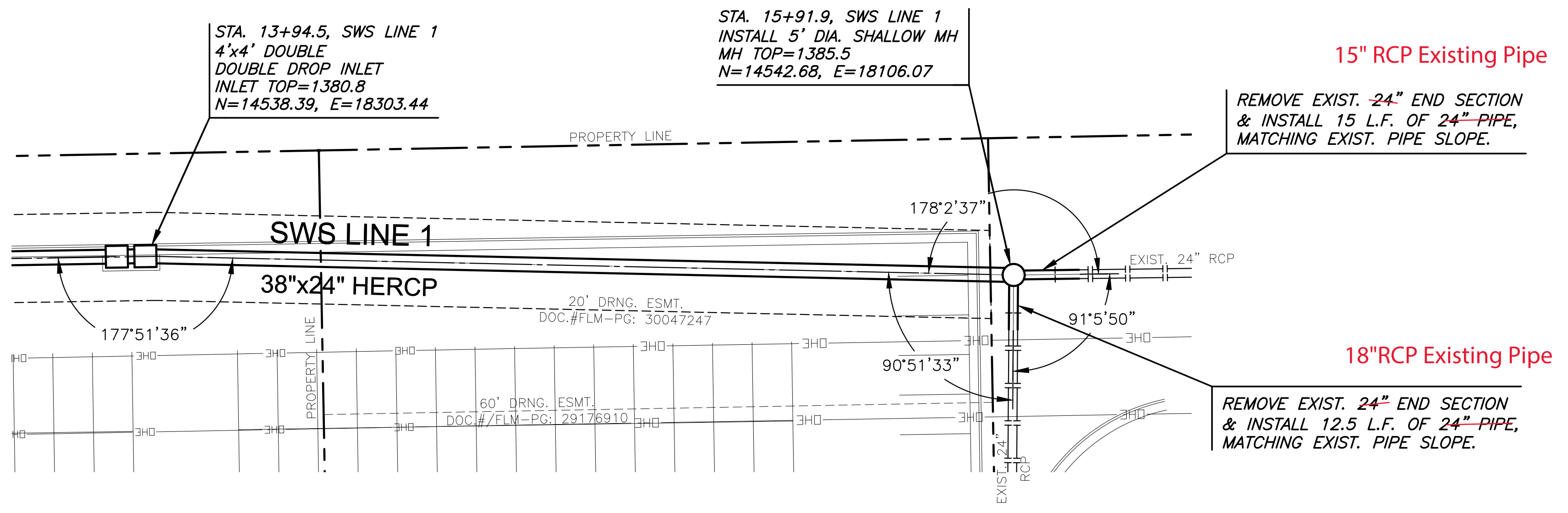
AS BUILTS



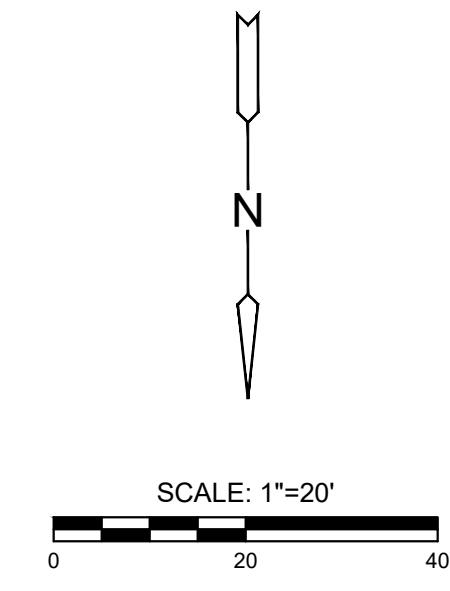
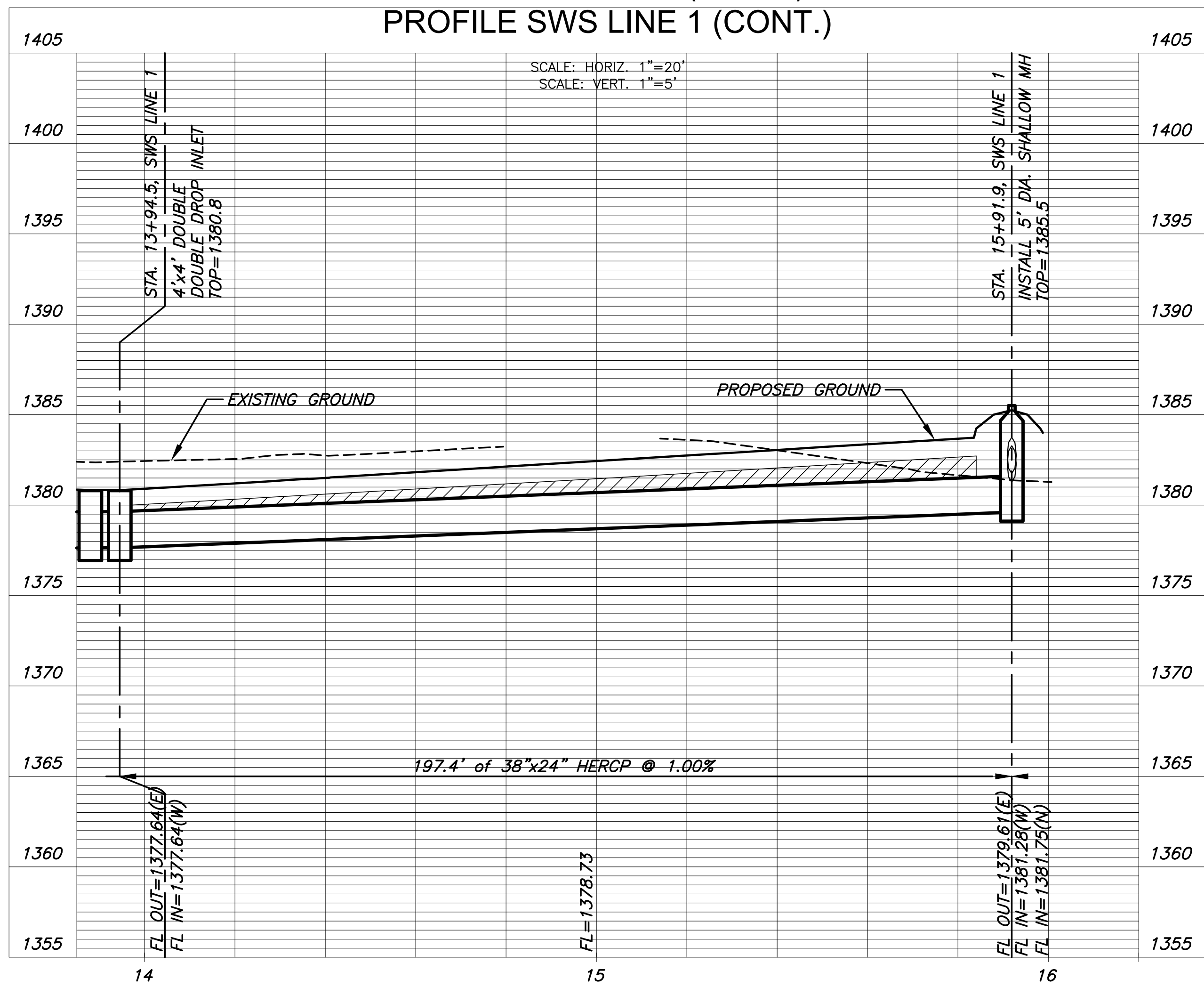
KEMILLER
ENGINEERING PA

117 E. Lewis,
Wichita, KS 67202 (316)264-0242

- NOTE:**
- CONTRACTOR TO VERIFY THE DEPTH AND LOCATION OF EXISTING UTILITIES PRIOR TO CONSTRUCTION.
 - WORK WITHIN PIPELINE EASEMENT, REQUIRES COORDINATION WITH SOUTHERN STAR. RE: ENCROACHMENT AGREEMENT DOC.#/FLM-PG: 29240266



PLAN SWS LINE 1 (CONT.)
PROFILE SWS LINE 1 (CONT.)



PRIVATE STORM WATER SEWER PLANS FOR
WEBB ROAD MEDICAL OFFICE BUILDING

©2021
MKEC Engineering
All Rights Reserved
www.mkec.com
These drawings and their contents, including, but not limited to, all concepts, designs, & ideas are the exclusive property of MKEC Engineering (MKEC), and may not be used or reproduced in any way without the express consent of MKEC.

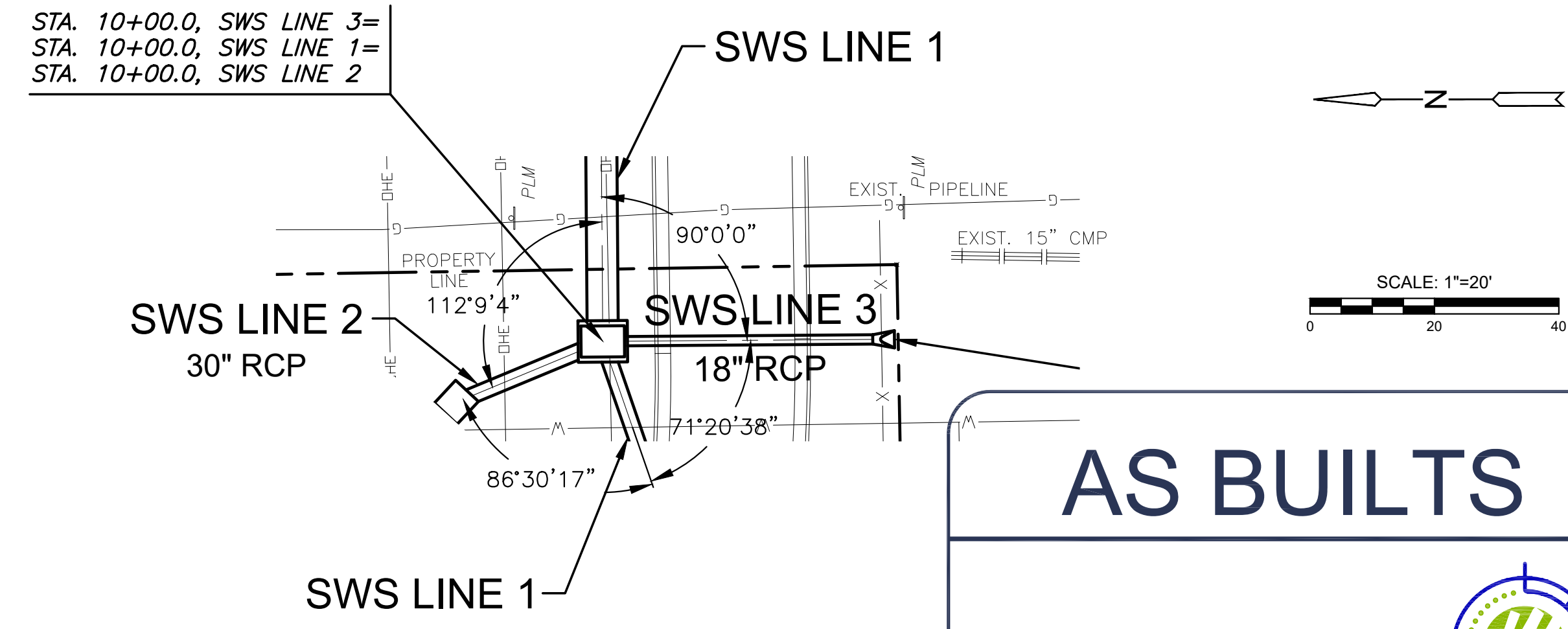
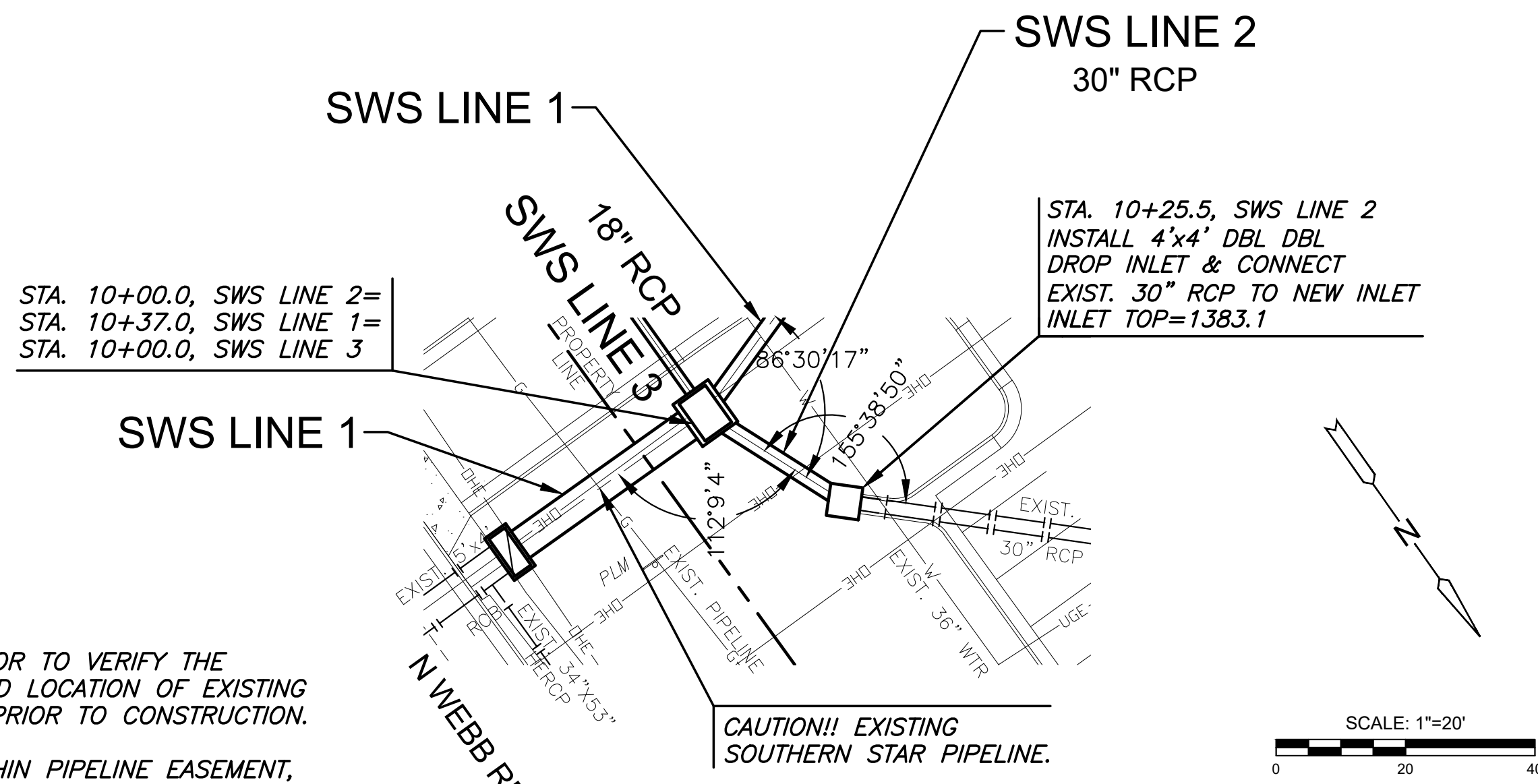
SWS LINE 1 (CONT.)		
PROJECT NO.	2021-000676 PPD	
DATE	APRIL 2021	
SCALE	1"=20'	
DESIGNED	DRAWN	CHECKED
SPE	LM	SPE
NO.	REVISION	DATE
SHEET NO.		
07 OF 09		

©2021 MKEC Engineering All Rights Reserved
www.mkec.com
These drawings and their contents, including, but not limited to, all concepts, designs, & ideas are the exclusive property of MKEC Engineering (MKEC), and may not be used or reproduced in any way without the express consent of MKEC.


SWS LINE 2 & 3

PROJECT NO.	2021-000676 PPD	
DATE	APRIL 2021	
SCALE	1"=20'	
DESIGNED	DRAWN	CHECKED
SPE	LM	SPE

NO.	REVISION	DATE



AS BUILTS

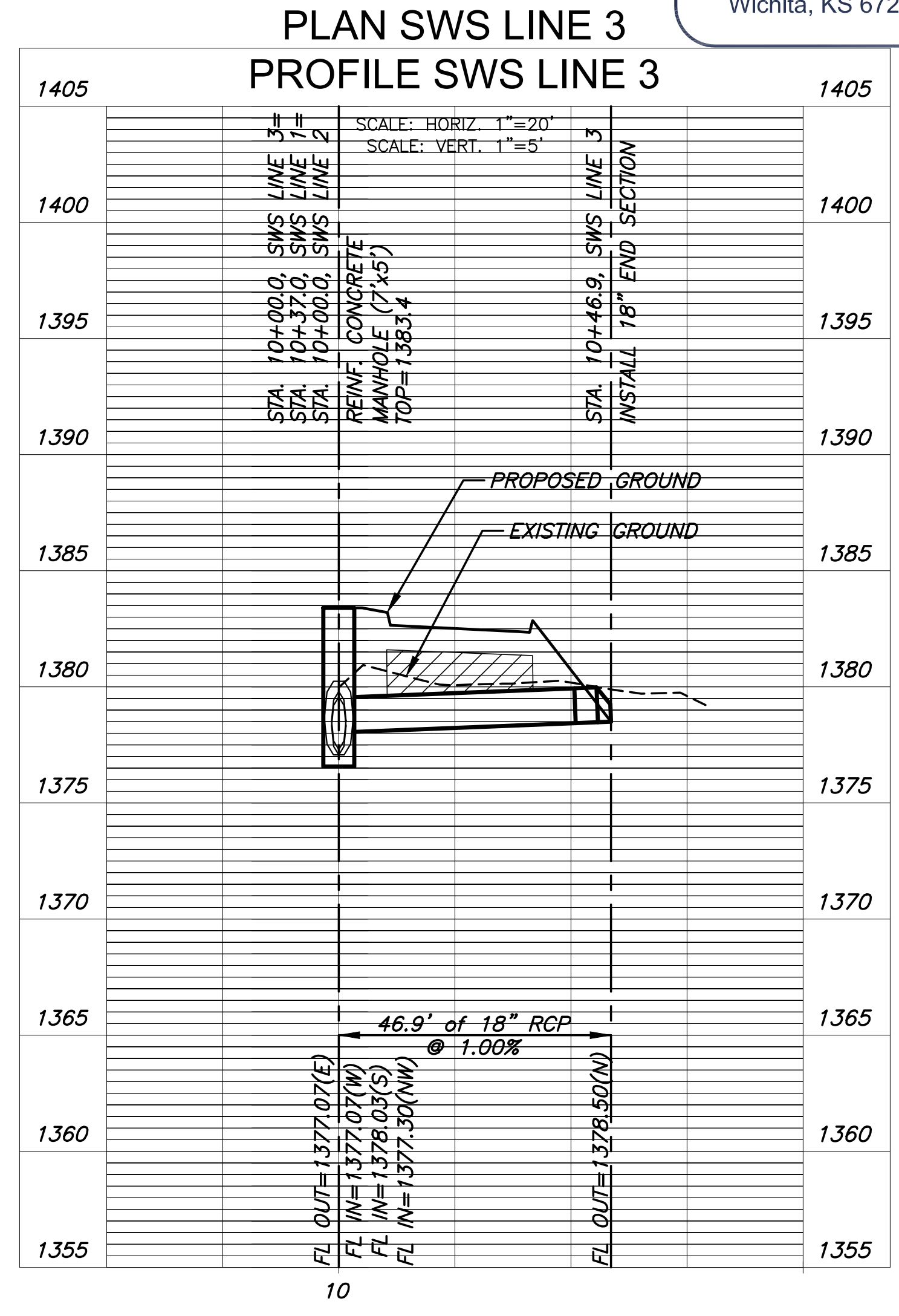
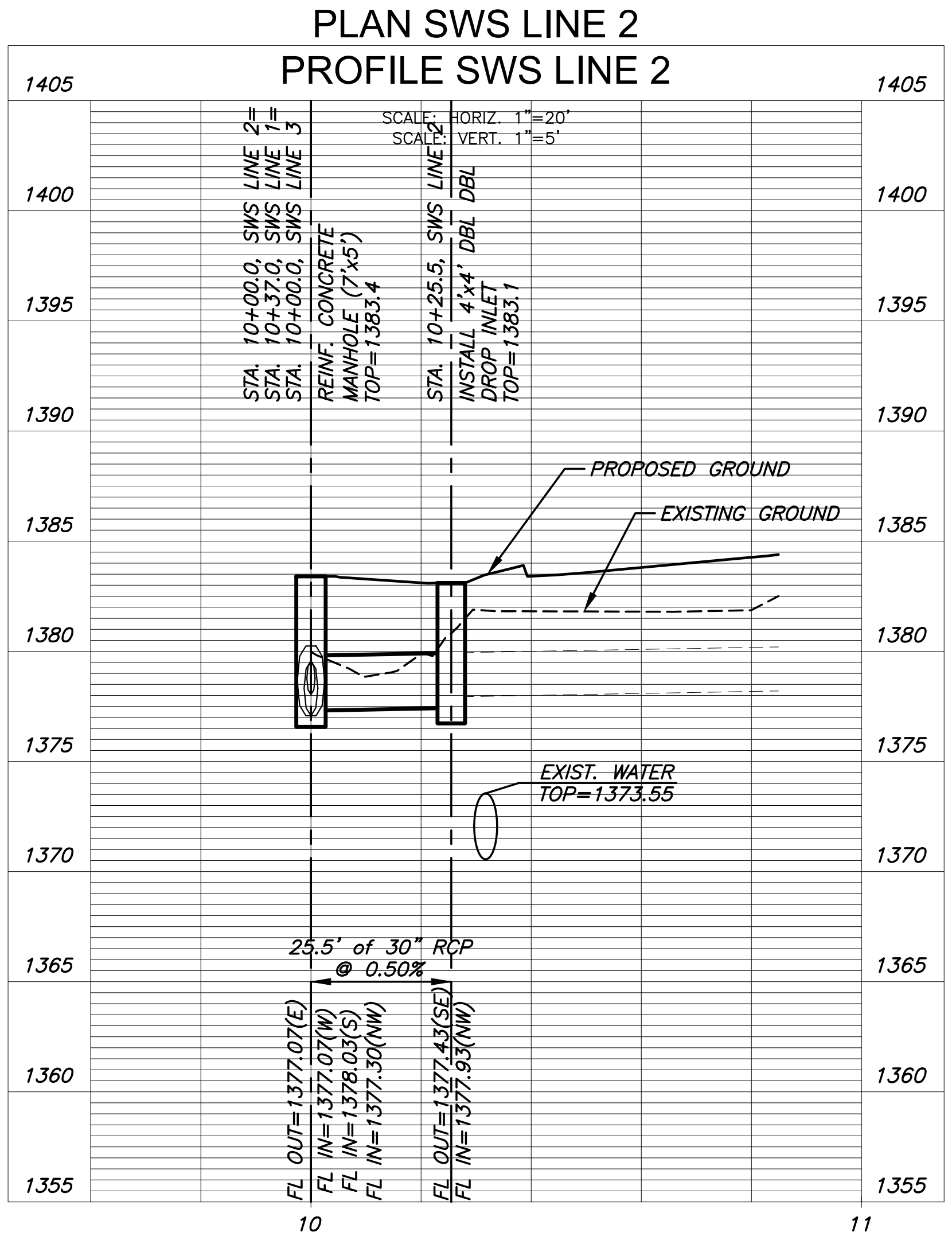


KEMILLER
ENGINEERING PA

117 E. Lewis,
Wichita, KS 67202

(316)264-0242

- NOTE:**
- CONTRACTOR TO VERIFY THE DEPTH AND LOCATION OF EXISTING UTILITIES PRIOR TO CONSTRUCTION.
 - WORK WITHIN PIPELINE EASEMENT, REQUIRES COORDINATION WITH SOUTHERN STAR. RE: ENCROACHMENT AGREEMENT DOC.#/FLM-PG: 29240266



I:\PROJECTS\2020\2001080752_SPT_WICHITA_KS_WEBB ROAD.MOB\000_20752_CADD\SHOTS\05_CIVIL\SWS\PPD\20752_SWS.LIN 02.DWG

PLOTED: Friday, April 09, 2021 @ 04:44PM


PLOTTED: Friday, April 30, 2021 8:02:06PM

I:\PROJECTS\2021\0001080742_SFT_WICHITA_KS_WEBB ROAD\JOB\0001080742_CAD\SET\5105_CIVIL\SWS\PPD\20742_SWS_MH 01.DWG

CONTRACTOR TO REMOVE & REPLACE SOLID COVER WITH CITY OF WICHITA STANDARD GRATED COVER. C.O.W. MH NO. 6049-0018 EXISTING MH TOP=1383.52 PROP. MH TOP=1383.75 N=14770.63, E=18300.26

LOT 2, BLOCK 1 WILSON ESTATES MEDICAL PARK ADD.

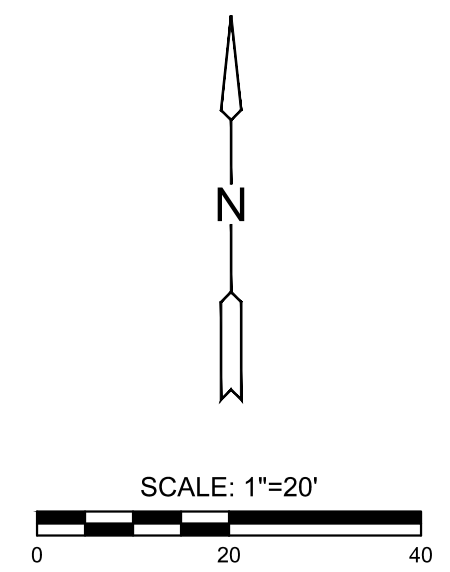
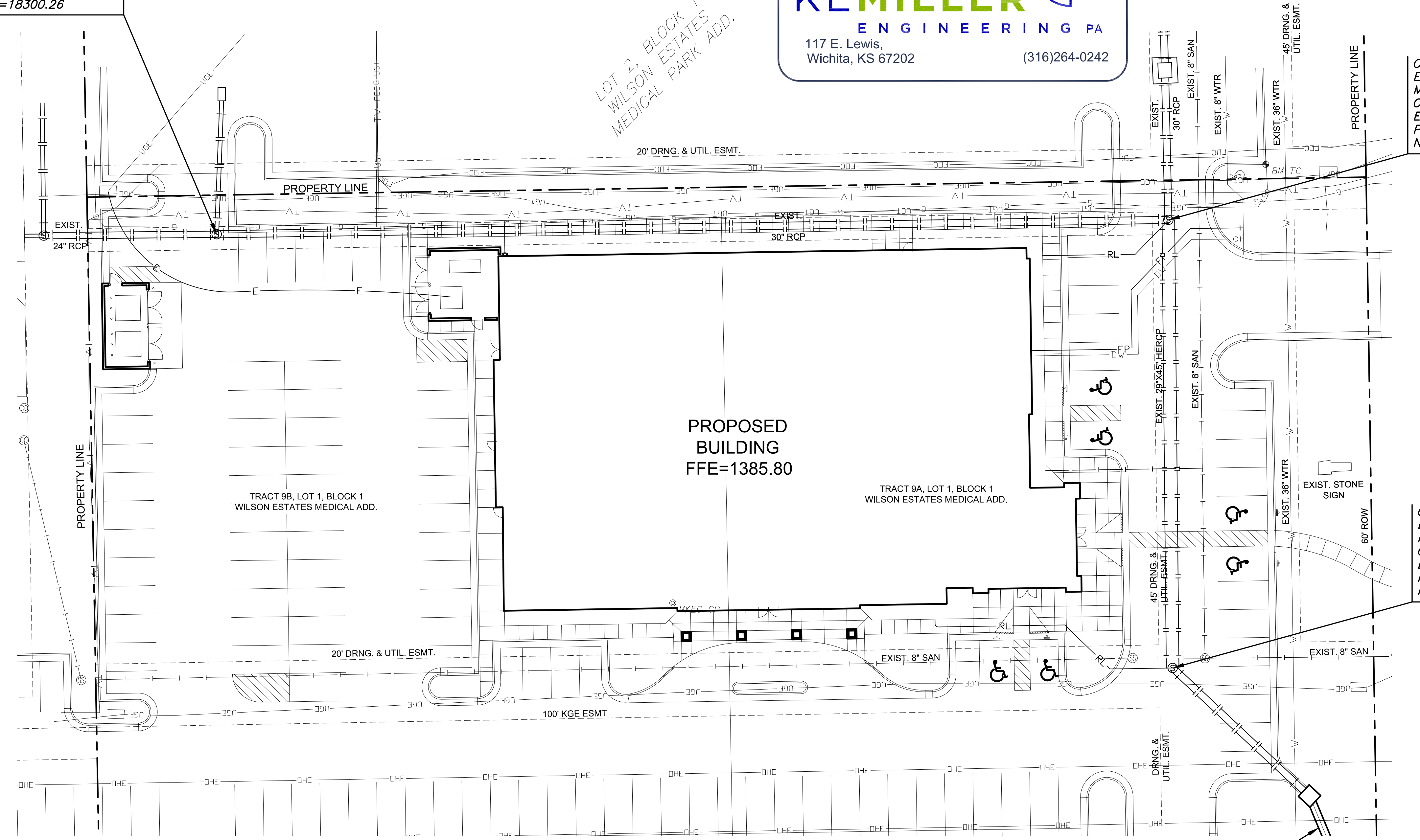
AS BUILTS



KEMILLER ENGINEERING PA
117 E. Lewis,
Wichita, KS 67202 (316)264-0242

CONTRACTOR TO ADJUST EXISTING STORMWATER MANHOLE TOP ELEVATION. C.O.W. MH NO. 6049-0020 EXISTING TOP=1383.19 PROP. TOP=1383.95 N=14775.25, E=18601.89

CONTRACTOR TO ADJUST EXISTING STORMWATER MANHOLE TOP ELEVATION. C.O.W. MH NO. 6049-0014 EXISTING TOP=1382.50 PROP. TOP=1384.40 N=14633.17, E=18603.25



SWS LINE 2



PRIVATE STORM WATER SEWER PLANS FOR
WEBB ROAD MEDICAL OFFICE BUILDING

©2021 MKEC Engineering All Rights Reserved www.mkec.com
These drawings and their contents, including, but not limited to, all concepts, designs, & ideas are the exclusive property of MKEC Engineering (MKEC), and may not be used or reproduced in any way without the express consent of MKEC.

SWS MH ADJUST

PROJECT NO.	2021-000676 PPD	
DATE	APRIL 2021	
SCALE	1"=20'	
DESIGNED	DRAWN	CHECKED
SPE	LM	SPE

NO.	REVISION	DATE