

STORM SEWER IMPROVEMENTS

TO SERVE

CLUB CARWASH

1716 W. 21ST. N.

CITY OF WICHITA, KANSAS

GARY JANZEN, P.E. CITY ENGINEER

2021-000686 PPD (56030970)



VICINITY MAP
NO SCALE

GENERAL NOTES

1. THE CONTRACTOR SHALL COMPLY WITH ALL APPLICABLE SAFETY REGULATIONS. ALL CONSTRUCTION SHALL BE COMPLETED FOLLOWING CURRENT CITY STANDARDS SPECIFICATIONS AND SPECIAL PROVISIONS.
2. CONTRACTOR WILL BE REQUIRED TO PROVIDE NOTICE TO UTILITY COMPANIES A MINIMUM OF SEVENTY-TWO (72) HOURS PRIOR TO ANY EXCAVATION, AS FOLLOWS:

KANSAS ONE-CALL 687-2470

THE CONTRACTOR MUST NOTIFY THE FOLLOWING IN CASE OF AN EMERGENCY:

AT&T	1-800-246-8464
BLACK HILLS ENERGY	1-800-694-8989
CITY OF WICHITA WATER & SEWER	1-316-219-8921
CITY OF WICHITA STORMWATER	1-316-268-4090
CITY OF WICHITA TRAFFIC	1-316-268-4034
COX COMMUNICATIONS	1-888-249-3530
KANSAS GAS SERVICE	1-888-482-4950
EVERGY	1-800-544-4857

3. UTILITY SERVICE LINES, POLES, ETC. ARE TO BE ADJUSTED AS NECESSARY BY OTHERS PRIOR TO CONSTRUCTION UNLESS THE PLANS SPECIFICALLY CALL FOR THEIR ADJUSTMENT BY THE CONTRACTOR OR UNLESS THE PLANS SPECIFICALLY IDENTIFY A UTILITY TO BE ADJUSTED BY ITS OWNER DURING CONSTRUCTION. EXISTING UTILITIES AND THEIR LOCATION, AS SHOWN ON THE PLANS, REPRESENT THE BEST INFORMATION OBTAINABLE FOR DESIGN. THE CONTRACTOR WILL BE REQUIRED TO WORK AROUND EXISTING UTILITIES WITHIN THE RIGHT-OF-WAY WHICH DO NOT CONFLICT WITH PROPOSED CONSTRUCTION.

4. RUBBLE FROM THE REMOVAL OF MISCELLANEOUS STRUCTURES AND EXCESS EXCAVATION WHICH IS TO BE WASTED SHALL BE DISPOSED OF ON SITES TO BE PROVIDED BY THE CONTRACTOR. THESE SITES SHALL BE APPROVED BY THE ENGINEER AS TO SUITABILITY, APPEARANCE AND SITE LOCATION. LOCATIONS, IN THE OPINION OF THE ENGINEER, THAT WILL LEAVE AN UNSIGHTLY APPEARANCE WILL NOT BE APPROVED. ALL DISPOSAL SITES MUST BE APPROVED BY THE KANSAS DEPARTMENT OF HEALTH AND ENVIRONMENT. MATERIAL STOCKPILED OR DISPOSED OF IN A FLOOD PLAIN WILL REQUIRE A KANSAS STATE BOARD OF AGRICULTURE PERMIT. ANY MATERIAL DUMPED IN WATERS OF THE UNITED STATES OR WETLANDS IS SUBJECT TO U.S. CORPS. OF ENGINEERS PERMITTING REGULATIONS. ANY MATERIAL BURIED OR STOCKPILED BEYOND APPROVED CONSTRUCTION LIMITS WILL REQUIRE ADDITIONAL ARCHAEOLOGICAL INVESTIGATIONS UNLESS BURIED IN A PREVIOUSLY APPROVED BORROW LOCATION.

5. TREES AND SHRUBS IN PUBLIC RIGHT-OF-WAY WHICH ARE IN DIRECT CONFLICT WITH PROPOSED NEW CONSTRUCTION SHALL BE REMOVED BY THE CONTRACTOR WITH THE CITY ENGINEER'S APPROVAL. TREES AND SHRUBS WHICH ARE NOT IN DIRECT CONFLICT WITH PROPOSED NEW CONSTRUCTION SHALL BE SAVED AND PROTECTED FROM DAMAGE.

6. THE CONTRACTOR SHALL GIVE ALL PROPERTY OWNERS AND/OR TENANTS OF DEVELOPED PROPERTY ADJUTING THE CONSTRUCTION OF THIS PROJECT A MINIMUM OF TEN (10) DAYS NOTICE PRIOR TO START OF CONSTRUCTION.

7. THE CONTRACTOR SHALL BE RESPONSIBLE FOR PRESERVING PROPERTY IRONS. THE CONTRACTOR WILL BE REQUIRED TO RE-ESTABLISH ANY PROPERTY IRONS WHICH ARE DAMAGED OR DESTROYED BY HIS CONSTRUCTION OPERATIONS. SUCH IRONS SHALL BE RE-ESTABLISHED BY A LICENSED LAND SURVEYOR IN ACCORDANCE WITH STATE LAWS.

8. THE ENGINEERING DIVISION SHALL FIELD LOCATE WATER VALVES ONE TIME DURING CONSTRUCTION WHEN REQUESTED BY THE CONTRACTOR. IT SHALL BE THE CONTRACTOR'S RESPONSIBILITY TO PRESERVE SUCH FIELD LOCATIONS DURING THE CONSTRUCTION PROCESS. WATER VALVES, VALVE BOXES OR FIRE HYDRANTS DAMAGED DURING CONSTRUCTION SHALL BE REPAIRED BY CONTRACTOR AT HIS OWN EXPENSE. VALVE BOXES AND WATER METERS WITHIN THE PROJECT LIMITS SHALL BE ADJUSTED TO MATCH FINAL GRADES BY THE CONTRACTOR.

9. THE CONTRACTOR SHALL NOTIFY THE INSPECTING ENGINEER AND DAWNITA REINHARDT AT 316-268-4574 WITH THE CITY OF WICHITA WITH THE ANTICIPATED CONSTRUCTION START DATE AND NOTIFY THEM OF PROJECT COMPLETION, STAKING AND INSPECTION OF THIS PROJECT WILL BE THE RESPONSIBILITY OF THE CONTRACTOR.

10. IF TRAFFIC WILL BE IMPACTED BY CONSTRUCTION, A TRAFFIC CONTROL PLAN MUST BE SUBMITTED AND APPROVED BY THE CITY TRAFFIC ENGINEER, MIKE ARMOUR AT traffic@wichita.gov BEFORE CONSTRUCTION CAN BEGIN. THE CONTRACTOR SHALL BE RESPONSIBLE FOR ALL TRAFFIC CONTROL MEASURES TO FACILITATE CONSTRUCTION. ALL CONSTRUCTION ZONE MARKINGS AND SIGNAGE SHALL CONFORM TO THE LATEST VERSION OF THE MANUAL ON UNIFORM TRAFFIC CONTROL DEVICES (MUTCD) AS PUBLISHED BY THE US DEPT. OF TRANSPORTATION, FEDERAL HIGHWAY ADMINISTRATION. ALL COSTS ASSOCIATED WITH CONSTRUCTION MARKINGS AND SIGNAGE SHALL BE THE CONTRACTOR'S RESPONSIBILITY.

11. ALL ELEVATIONS SHOWN ARE NAVD 88.

12. ALL AREAS DISTURBED DURING CONSTRUCTION THAT WILL NOT BE UNDER PROPOSED PAVEMENT SHALL BE RESTORED TO MATCH EXISTING CONDITIONS.

13. ANY SIDEWALK, DRIVE APPROACH, CURB, OR STREET PAVEMENT REMOVED TO CONSTRUCT PROJECT MUST HAVE A PAVEMENT CUT PERMIT AND BE REPLACED BY THE CITY CONTRACTOR. PERMITS CAN BE OBTAINED BY CALLING 316-268-4501 OR 316-268-4480.

14. CITY MAINTENANCE OF STORM SEWER ENDS AT THE LAST STRUCTURE IN THE EASEMENT OR RIGHT-OF-WAY.

15. A PORTION OF EXCESS EXCAVATED MATERIAL SHALL BE MOUND AROUND MANHOLES WHICH EXTEND MORE THAN ONE (1) FOOT ABOVE THE EXISTING GROUND. SUCH MOUND SHALL BE CONSTRUCTED WITH NEW DEVELOPMENT A SIX (6) FOOT DIAMETER FLAT TOP WITH 4 TO 1 SIDE SLOPES DOWN TO THE ORIGINAL GROUND. THE ELEVATION OF THE FLAT TOP OF THE MOUND SHALL BE 0.4 FOOT BELOW THE TOP TO THE MANHOLE.

16. CONTRACTOR SHALL LIMIT THE EXTENT OF TRENCH OPENINGS OVERNIGHT AND WEEKENDS TO LESS THAN 50 FEET.

17. THE INSPECTING FIRM SHALL SUBMIT TO THE CITY STORMWATER MAINTENANCE DIVISION A DIGITAL COPY OF THE CCTV INSPECTION OF THE CONDUITS AND STRUCTURES FOLLOWING CONSTRUCTION. THE DIGITAL FILE FORMATION SHALL BE COMPATIBLE WITH THE CITY INPUT TEMPLATE. A COPY OF THE TEMPLATE IS AVAILABLE UPON REQUEST AT 316-268-4090.

18. THE CONTRACTOR SHALL PROTECT FROM DAMAGE AND SUPPORT EXISTING UTILITIES THROUGH CONSTRUCTION AS APPROVED BY THE UTILITY OWNER AND THE ENGINEER AT THE CONTRACTOR'S EXPENSE.

AS BUILTS

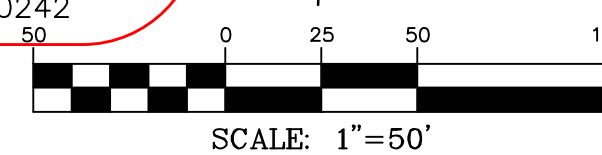
Contractor:
Ewertz Excavation

Project Inspector:
Larry Gann

12/15/2021

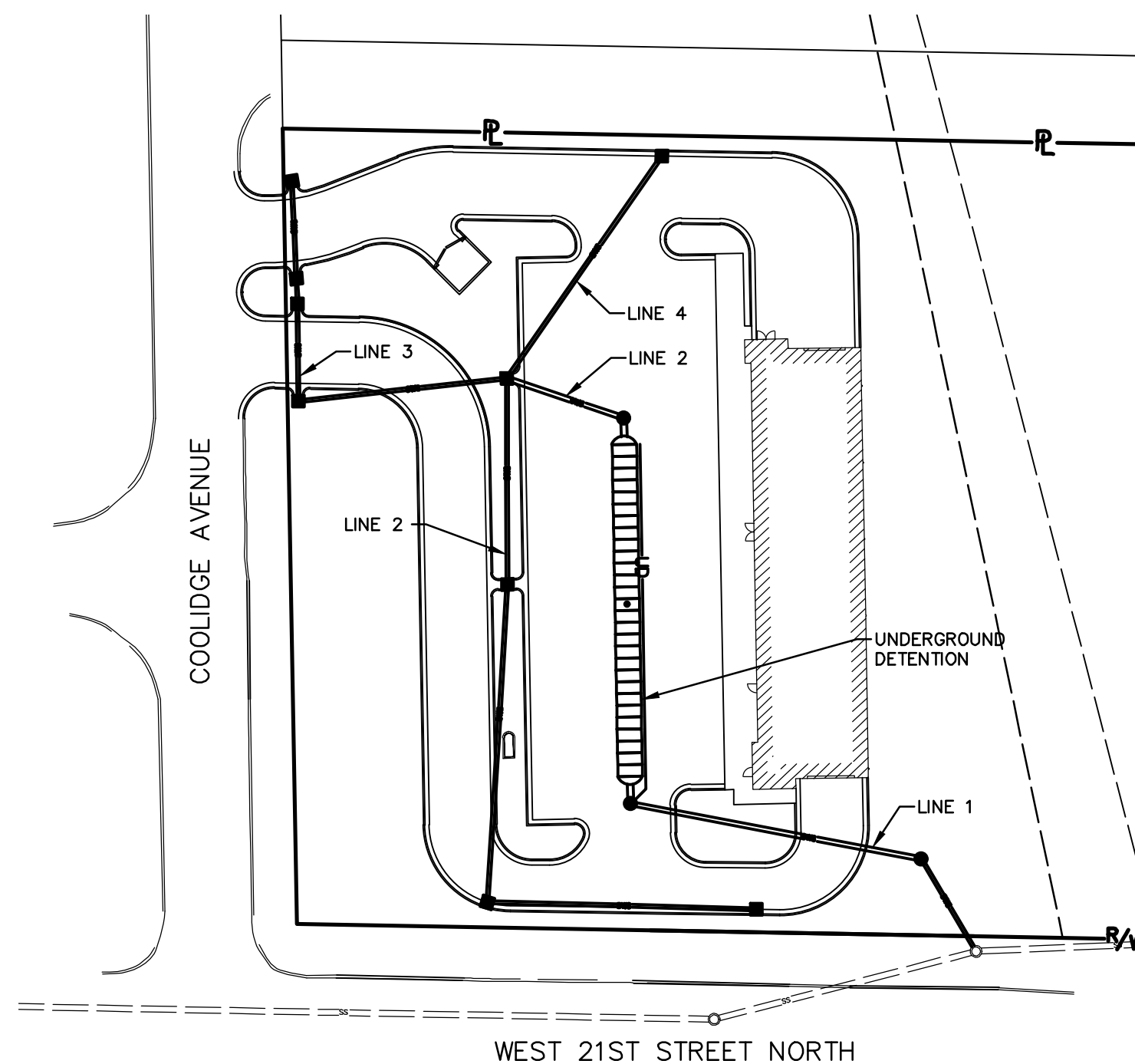
KEMILLER
ENGINEERING PA

117 E. Lewis, Wichita, KS 67202 (316)264-0242



SHEET INDEX

SHEET INDEX	SHEET
SITE PLAN	1
PLAN AND PROFILE	2
PLAN AND PROFILE	3
EROSION CONTROL PLAN	4
DETAILS/SPECIFIC/EROSION CONTROL	5
DETAILS/SPECIFIC/EROSION CONTROL	6



BENCHMARK

SITE BENCHMARK:
ELEV=1314.24 (NAVD 88)
THE SITE BENCHMARK IS A SQUARE CUT IN SOUTHEAST CORNER OF CITY OF WICHITA TRAFFIC SIGNAL MANHOLE, LOCATED SOUTH OF PROPERTY.

APRIL, 2021
REVISED APRIL 21, 2021



CIVIL ENGINEERING
LAND SURVEYING
ARCHITECTURE

• SITE DEVELOPMENT
• MASTER PLANNING
• GENERAL CONSULTING

8 EAST MAIN STREET, WENTZVILLE, MISSOURI 63385

TELEPHONE (636) 332-4574

FAX (636) 327-0760

E-MAIL wentmail@cochraneng.com

STORMWATER CERTIFICATION:

NEW DEVELOPMENT OR REDEVELOPMENT (CIRCLE ONE)

STORMWATER PERMIT # _____

NOI PERMIT # S-LA20-0071/KSR116361

THESE CONSTRUCTION PLANS WERE PREPARED IN ACCORDANCE WITH THE CURRENT STORMWATER MANAGEMENT REGULATIONS AS SET FORTH IN THE CITY OF WICHITA'S STORMWATER MANAGEMENT ORDINANCE 16.32 AND THE POLICIES/GUIDELINES PRESENTED IN THE WICHITA/SEDGWICK COUNTY STORMWATER MANUAL.

SITE AREA (ACRES) = 2.59

DISTURBED AREA (ACRES) = 1.49

WATER QUALITY TREATMENT: ON-SITE BMP

DOWNSTREAM CHANNEL PROTECTION: NONE

DETENTION: ON-SITE UNDERGROUND

THE BMP USED FOR THIS DEVELOPMENT IS PROGRAM

APPROVED AS NOTED
BY WICHITA PUBLIC WORKS ENGINEERING
& STORMWATER DIVISION

ENGINEERING SHAWN MELLIES 05-07-2021

STORMWATER JOSEPH HICKLE 05-07-2021

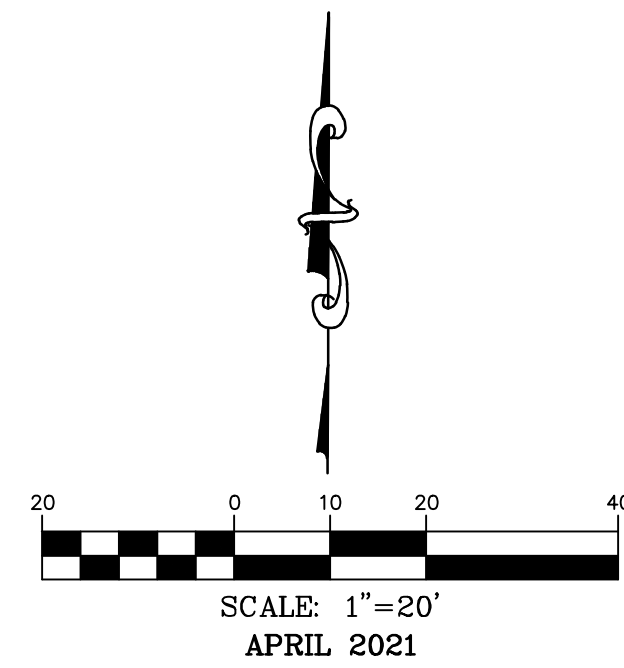
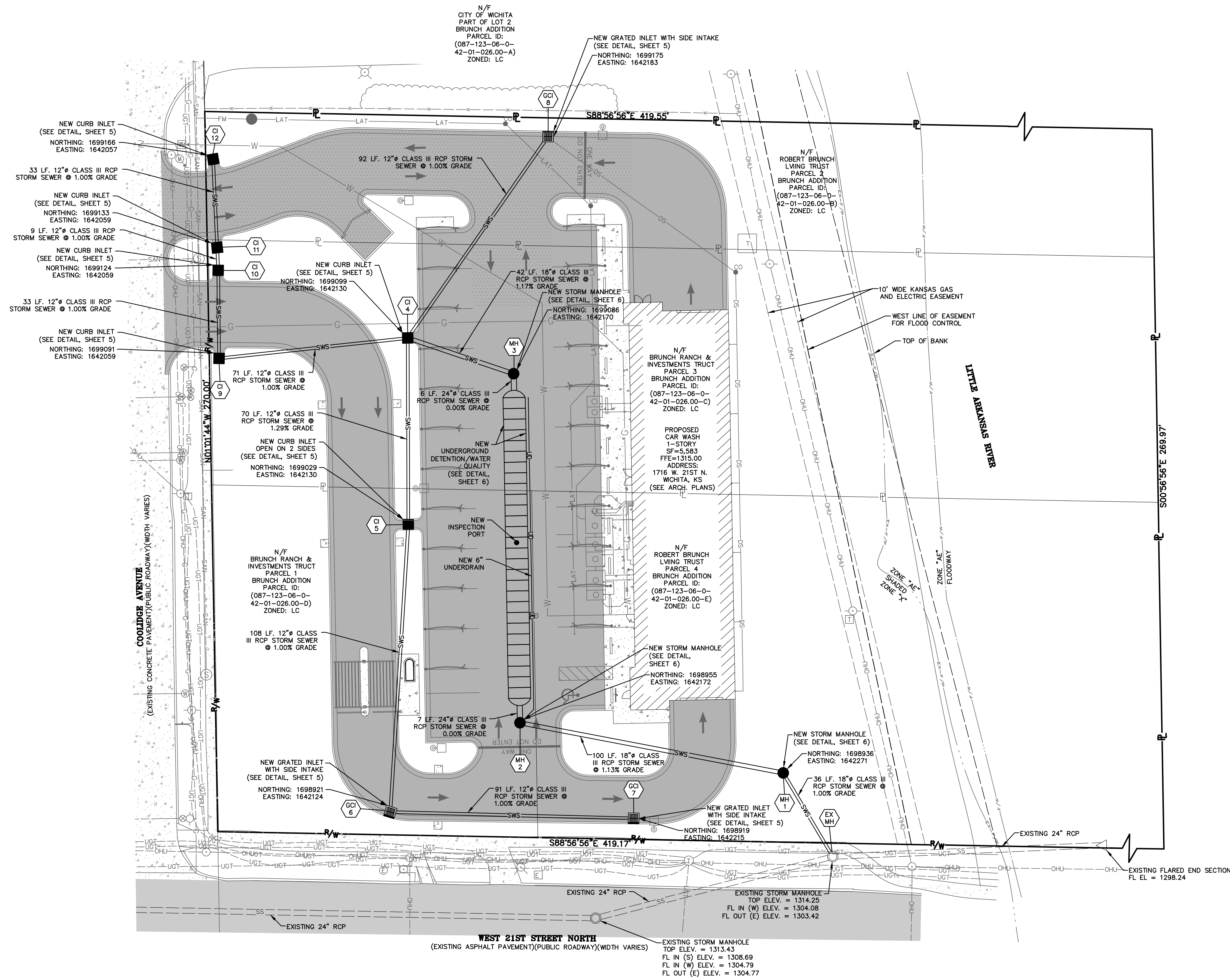
NOTE TO CONTRACTORS

INSPECTION AND TESTING FOR THIS PROJECT IS TO BE PROVIDED BY A LICENSED CONSULTING ENGINEERING FIRM UNDER CONTRACT WITH THE OWNER/DEVELOPER. SAID INSPECTION TO BE IN ACCORDANCE WITH THE CITY OF WICHITA STANDARD CONSTRUCTION ENGINEERING PRACTICES AND CERTIFIED BY A LICENSED PROFESSIONAL ENGINEER IN THE STATE OF KANSAS. NO WORK SHALL BE PERFORMED BY THE CONTRACTOR WITHOUT SUCH INSPECTION NOR SHALL ANY WORK BE COMMENCED WITHOUT WRITTEN AUTHORIZATION BY CITY ENGINEERING. ALL CONSTRUCTION AND MATERIALS SHALL COMPLY WITH THE CURRENT CITY OF WICHITA SPECIFICATIONS AND STANDARDS AND SPECIAL PROVISIONS (ON FILE AND AVAILABLE AT wichita.gov).

AN APPROVED COPY OF THESE PLANS SIGNED BY CITY STAFF ARE REQUIRED ON-SITE.



SITE PLAN



OWNER:
BRUNCH RANCH & INVESTMENTS TRUST
8100 E 22ND ST.
WICHITA, KS 67226

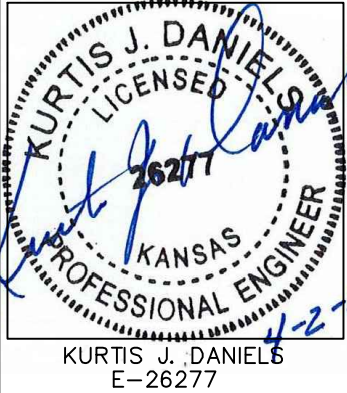
DEVELOPER:
CLUB CARWASH OPERATING, LLC
1213 OLD HWY 63, STE 101
COLUMBIA, MO 65201

636-332-4574 (tel.)
636-327-0760 (fax)
www.ochran.com
Civil Engineering
Land Surveying
Architecture
Site Development
General Consulting
Master Planning



Kansas State Certificate of Authority Numbers:
E-2927

Two working days prior to the start of any excavation call 1-800-485-SAFE for utility location information.
All OSHA rules & regulations construction required by these plans shall be strictly followed (ie. trenching, blasting, etc.)



**STORM SEWER IMPROVEMENTS
CLUB CARWASH
WICHITA, KS**

DATE:	APR. 2021
SCALE:	1:20
PROJ. NO.:	M20-7933A
DWG. NO.:	1



DWG NAME: J:\2020\M20-7933 - CCW 1716 W 21st St. Wichita, KS\ENGINEERING\AUTOCAD DRAWINGS\03_Construction Drawings\Storm Sewer Improvements\M20-7933_1_SITE PLAN.dwg LAYOUT TAB: 1 PLOTTED ON: May 10, 2021 - 7:35am PLOTTED BY: KFarrell

PLAN AND PROFILE

AS BUILTS

Contractor:
Ewertz Excavation

Project Inspector:
Larry Gann



117 E. Lewis, Wichita, KS 67202 (316)264-0242



636-332-4574 (tel.)
636-327-0760 (fax)
www.cochranengineering.com

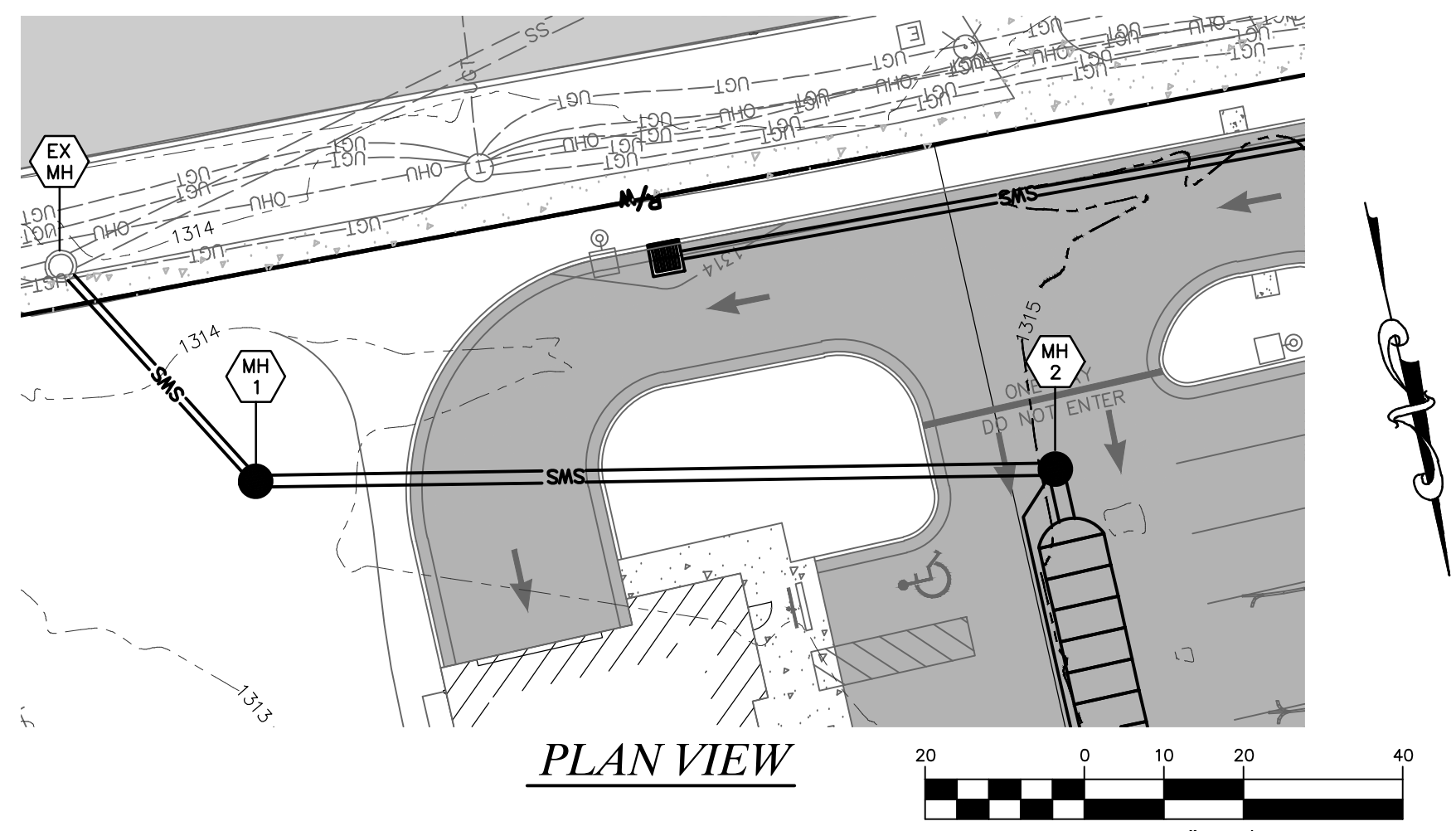
- Civil Engineering
- Land Surveying
- Architecture
- Site Development
- General Consulting
- Master Planning

Kansas State Certificate of Authority Numbers:
E-2927

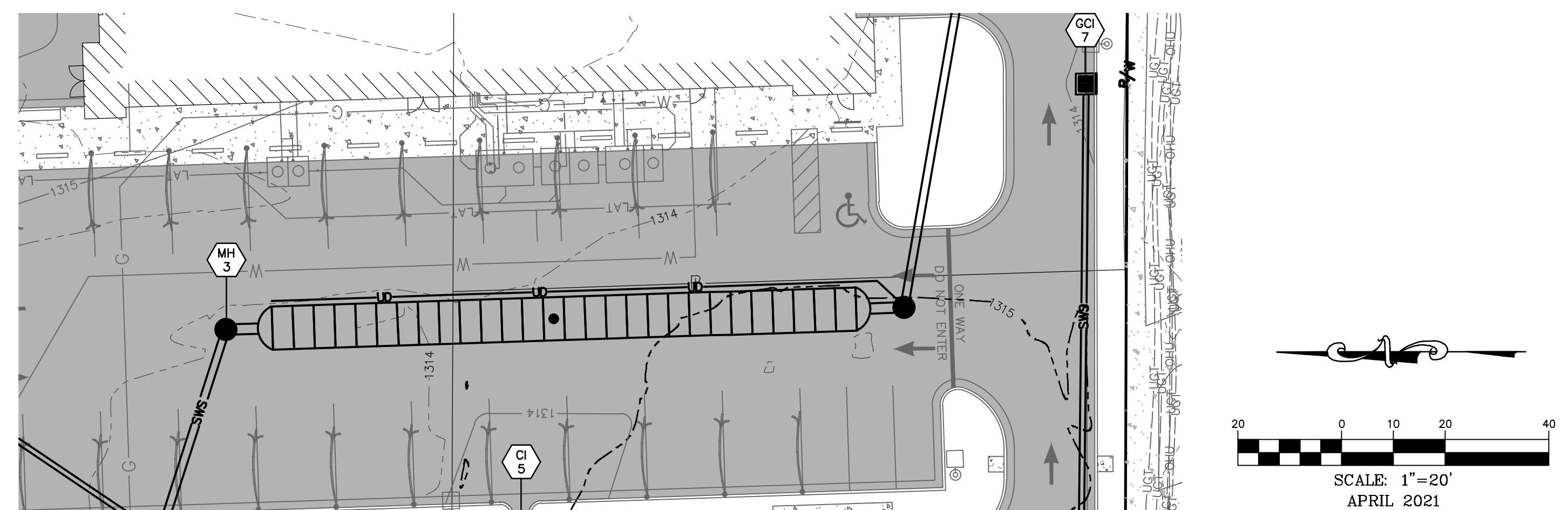
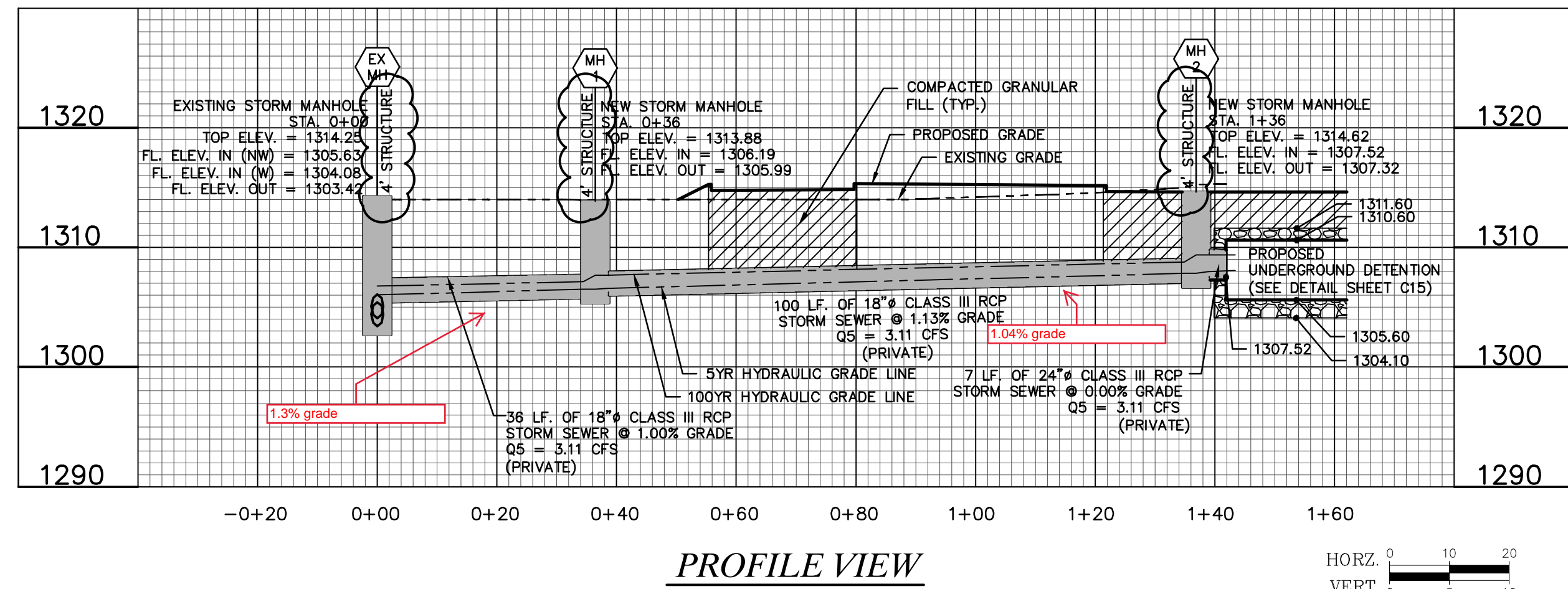
Two working days prior to the start of any excavation call 1-800-455-SAFE for utility location information.
All OSHA rules & regulations construction required by these plans shall be strictly followed (i.e. trenching, blasting, etc.)



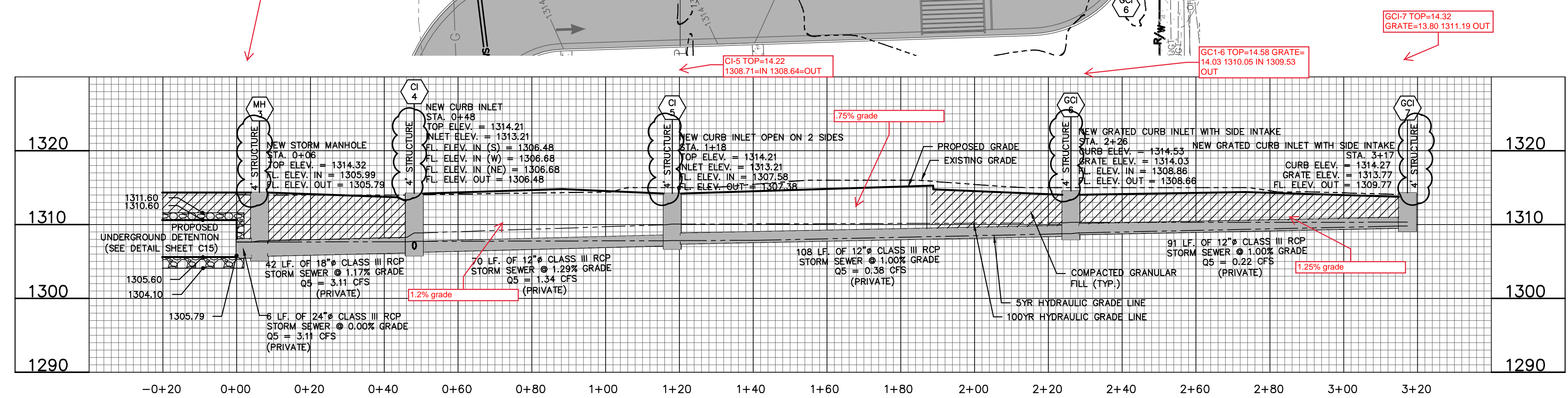
KURTIS J. DANIELS
LICENSED PROFESSIONAL ENGINEER
KANSAS
E-26277



NEW FLOW LINE IN = 1305.53
MH-1 TOP=13.99 IN=1306.09 OUT=1306.00
MH-2 TOP=14.65 1305.36 N. TO CHAMBER 1305.46=N.E. 1307.13= OUT (E.S.E.)



MH-3 TOP=14.30 1305.70 S. TO CHAMBER 1305.49 S.E. 1307.35=OUT (W.N.N.)



OWNER:
BRUNCH RANCH & INVESTMENTS TRUST
8100 E 22ND ST.
WICHITA, KS 67226

OWNER:
ROBERT A BRUNCH LIVING TRUST
8100 E 22ND ST.
WICHITA, KS 67226

DEVELOPER:
CLUB CARWASH OPERATING, LLC
1213 OLD HWY 63, STE 101
COLUMBIA, MO 65201

STORM SEWER IMPROVEMENTS
CLUB CARWASH
WICHITA, KS

DATE	APP'D BY	DATE	APP'D BY
04/21/21	KAF	APR. 2021	KJD
DATE	REVISION	DATE	REVISION
	1. PER CITY COMMENTS		

PROJ. NO.: M20-7933A
DWG. NO.: 2

DWG. NAME: J:\2020\M20-7933 - CCW 1716 W 21st St., Wichita, KS\ENGINEERING\AUTOCAD DRAWINGS\M20-7933-2-PLAN & PROFILE.dwg LAYOUT TAB: 2 PLOTTED ON: May 10, 2021 - 7:35am PLOTTED BY: KFarrell

PROPOSED LAYOUT

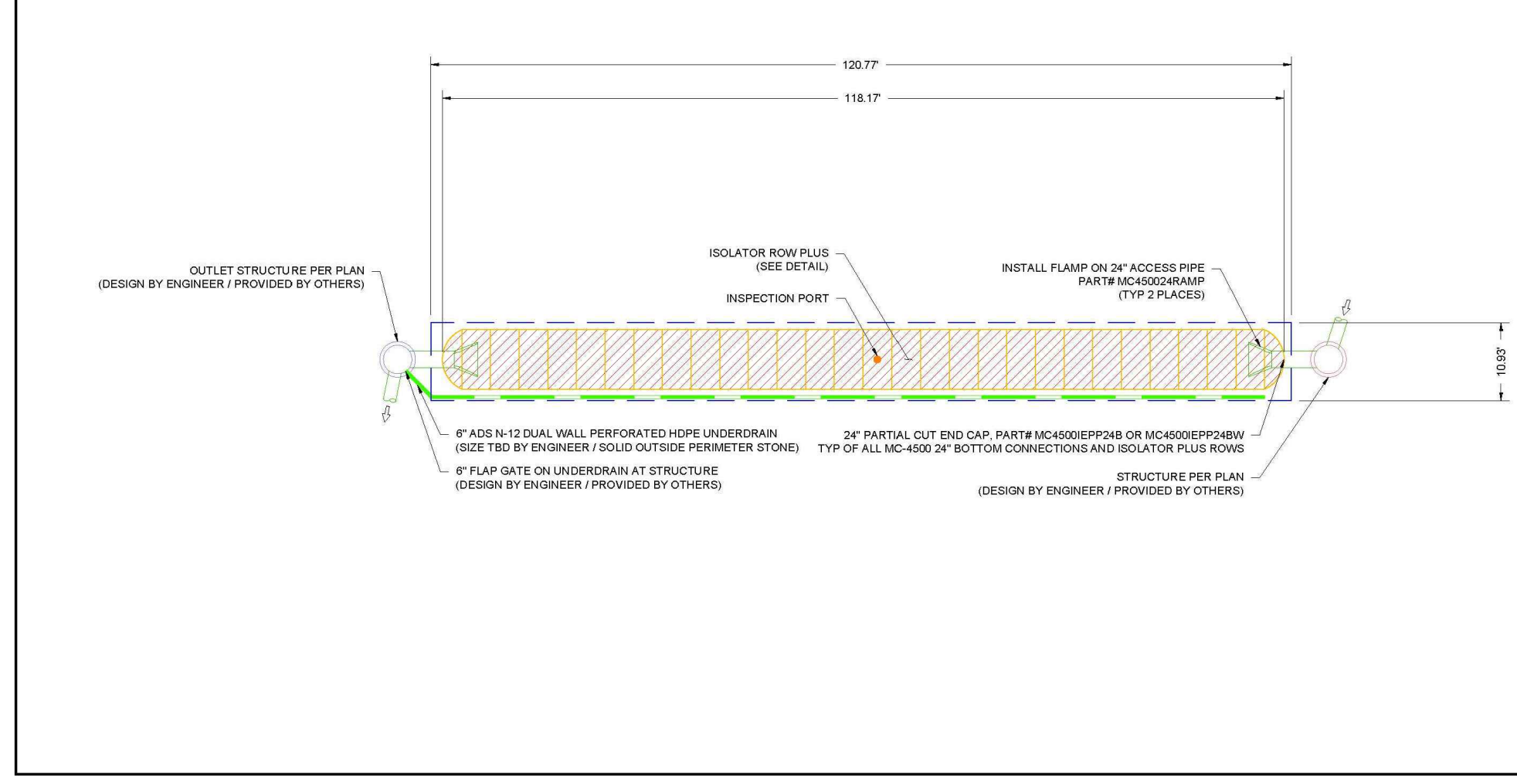
29	STORMTECH MC-400 CHAMBERS
2	STORMTECH MC-400 END CAPS
12	STONE ABOVE (H)
14	STONE BELOW (H)
40	1/2" STONE VOID
3787	INSTALLED FILTER VOLUME (CF) (PERIMETER STONE INCLUDED)
1320	SYSTEM AREA (FT ²)
263	SYSTEM PERIMETER (L)

PROPOSED ELEVATIONS

1317.80	MAXIMUM ALLOWABLE GRADE (TOP OF PAVEMENT/UNPAVED)
1315.10	MINIMUM ALLOWABLE GRADE (UNPAVED WITH TRAFFIC)
1312.00	MINIMUM ALLOWABLE GRADE (UNPAVED NO TRAFFIC)
1312.00	MINIMUM ALLOWABLE GRADE (BASE OF FLEEVIBLE PAVEMENT)
1312.00	MINIMUM ALLOWABLE GRADE (TOP OF FLEEVIBLE PAVEMENT)
1311.00	TOP OF STONE
1310.00	TOP OF MC-400 CHAMBER
1306.70	24" ISOLATOR ROW PLUS CONNECTION INVERT
1306.00	BOTTOM OF MC-400 CHAMBER
1304.10	UNDERDRAIN INVERT
1304.10	BOTTOM OF STONE

NOTES

- MANIFOLD SIZE TO BE DETERMINED BY SITE DESIGN ENGINEER. SEE TECHNICAL NOTE 6.32 FOR MANIFOLD SIZING GUIDANCE.
- DUE TO THE ADAPTATION OF THIS CHAMBER SYSTEM TO SPECIFIC SITE AND DESIGN CONSTRAINTS, IT MAY BE NECESSARY TO CUT AND ADJUST ADDITIONAL PIPE TO STANDING MANIFOLD COMPONENTS IN THE FIELD.
- THIS CHAMBER SYSTEM WAS DESIGNED WITHOUT SITE-SPECIFIC INFORMATION ON SOIL CONDITIONS OR BEARING CAPACITY. THE SITE DESIGN ENGINEER IS RESPONSIBLE FOR DETERMINING THE SUITABILITY OF THE SOIL AND PROVIDING THE BEARING CAPACITY OF THE INSTALLED SOILS. THE BASE STONE DEPTH MAY BE INCREASED OR DECREASED ONCE THIS INFORMATION IS PROVIDED.

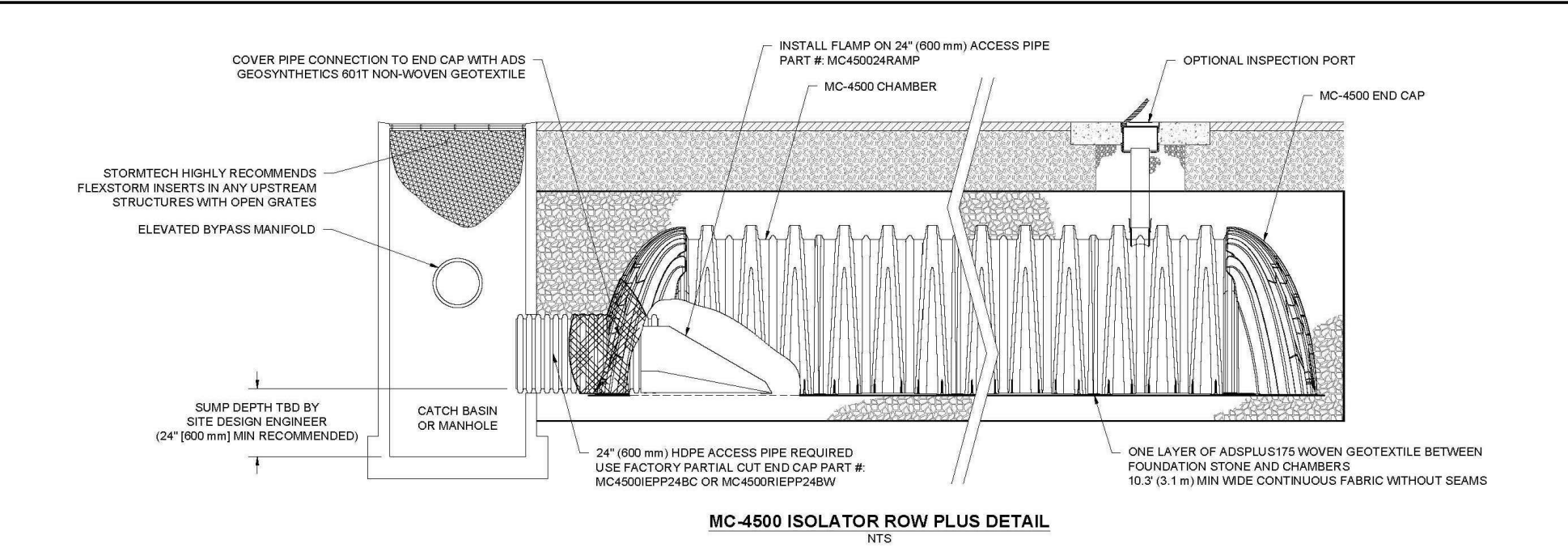


CLUB CAR WASH
WICHITA, KS

DATE: 03/20/21
PROJECT #: 2020047
CHECKED: ALI

StormTech
4645 TULLAMAH BLVD
HILLIARD, OH 43026

2 SHEET OF 5



INSPECTION & MAINTENANCE

STEP 1) INSPECT ISOLATOR ROW PLUS FOR SEDIMENT

- INSPECTOR PORTS (IF PRESENT)
- REMOVE OPEN LID ON UPSTREAM INLET LINE DRAIN
- REMOVE AND CLEAN FLEEVIBLE FILTER IF INSTALLED
- USING A FLASHLIGHT AND STADIA ROD, MEASURE DEPTH OF SEDIMENT AND RECORD ON MAINTENANCE LOG
- LOWER CAMERA INTO ISOLATOR ROW PLUS FOR VISUAL INSPECTION OF SEDIMENT LEVELS (OPTIONAL)
- IF SEDIMENT IS AT OR ABOVE 3" (80 mm) PROCEED TO STEP 2; IF NOT, PROCEED TO STEP 3

STEP 2) CLEAN OUT ISOLATOR ROW PLUS USING THE JETVAC PROCESS

- A FIXED ORVERT CLEANING NOZZLE WITH REAR FACING SPRAY OF 45° (1.1 m) OR MORE IS PREPARED
- APPLY MULTIPLE PASSES OF JETVAC UNTIL BACKFLUSH WATER IS CLEAN
- VACUUM STRUCTURE SUMP AS REQUIRED

STEP 3) REPLACE ALL COVERS, GRATES, FILTERS, AND LIDS; RECORD OBSERVATIONS AND ACTIONS

STEP 4) INSPECT AND CLEAN BASINS AND MANHOLES UPSTREAM OF THE STORMTECH SYSTEM

NOTES

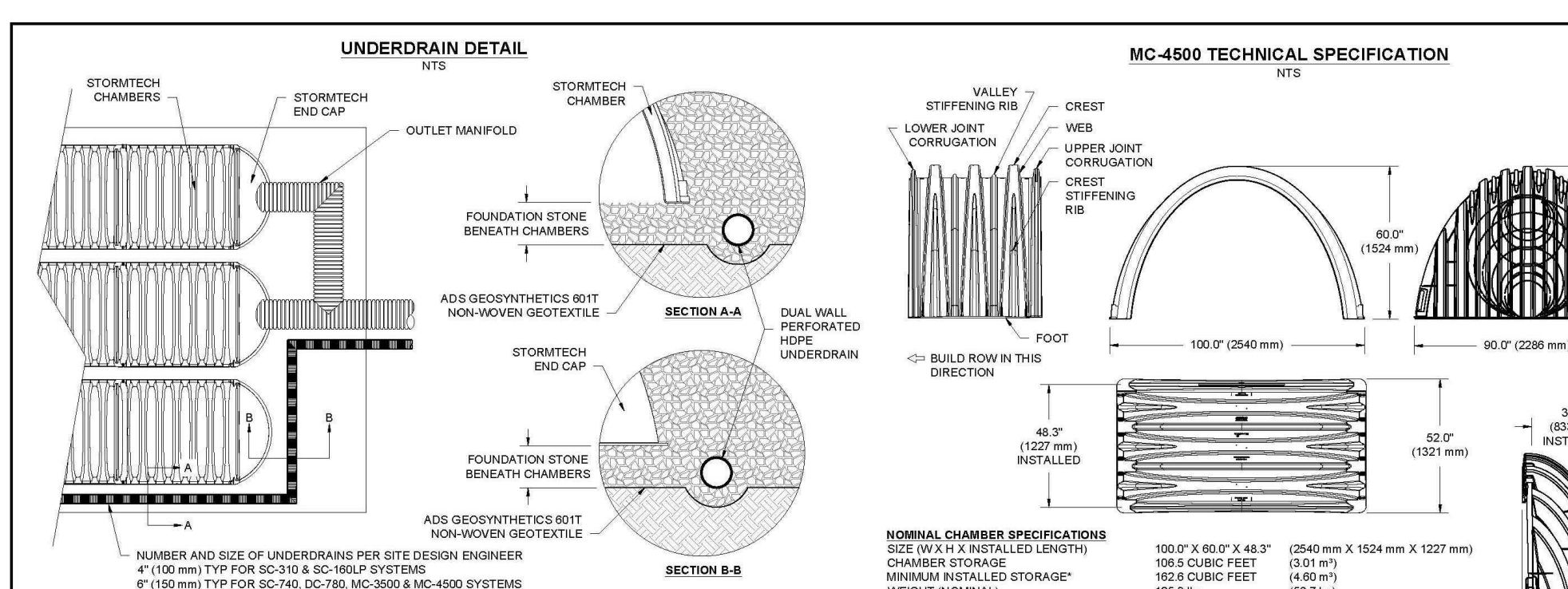
- INSPECT EVERY 6 MONTHS DURING THE FIRST YEAR OF OPERATION. ADJUST THE INSPECTION INTERVAL BASED ON PREVIOUS OBSERVATIONS OF SEDIMENT ACCUMULATION AND HIGH WATER ELEVATIONS.
- CONDUCT JETTING AND VACTORING ANNUALLY OR WHEN INSPECTION SHOWS THAT MAINTENANCE IS NECESSARY.

CLUB CAR WASH
WICHITA, KS

DATE: 03/20/21
PROJECT #: 2020047
CHECKED: ALI

StormTech
4645 TULLAMAH BLVD
HILLIARD, OH 43026

4 SHEET OF 5



CLUB CAR WASH
WICHITA, KS

DATE: 03/20/21
PROJECT #: 2020047
CHECKED: ALI

StormTech
4645 TULLAMAH BLVD
HILLIARD, OH 43026

5 SHEET OF 5

MC-400 TECHNICAL SPECIFICATION

NOMINAL CHAMBER SPECIFICATIONS

SIZE (W x H x INSTALLED LENGTH)	100.0" x 60.0" x 48.0"	(2540 mm x 1524 mm x 1217 mm)
CHAMBER STORAGE	105.5 CUBIC FEET	(3.01 m ³)
MINIMUM INSTALLED STORAGE*	162.8 CUBIC FEET	(4.60 m ³)
WEIGHT (NORMAL)	1253.0 lbs.	(567.7 kg)

NOMINAL END CAP SPECIFICATIONS

SIZE (W x H x INSTALLED LENGTH)	60.0" x 61.0" x 32.0"	(1524 mm x 1549 mm x 813 mm)
END CAP STORAGE	394.0 CUBIC FEET	(11.12 m ³)
MINIMUM INSTALLED STORAGE*	115.3 CUBIC FEET	(3.28 m ³)
WEIGHT (NORMAL)	90 lbs.	(40.8 kg)

*ASLIMES 12" (305 mm) STONE ABOVE, 1/2" (12.7 mm) STONE FOUNDATION AND BETWEEN CHAMBERS, 12" (305 mm) STONE PERIMETER IN FRONT OF END CAPS AND 40% STONE POROSITY.

PARTIAL CUT HOLES AT BOTTOM OF END CAP FOR PART NUMBERS ENDING WITH "E"
PARTIAL CUT HOLES AT TOP OF END CAP FOR PART NUMBERS ENDING WITH "T"
END CAPS WITH A PREFABRICATED WELDED STUB END WITH "V"

PART #	STUB	B	C
MC400EPP00T	8" (203 mm)	42.54" (1081 mm)	0.80" (20 mm)
MC400EPP00S	8" (203 mm)	40.50" (1029 mm)	0.80" (20 mm)
MC400EPP00T	10" (254 mm)	38.37" (978 mm)	1.01" (26 mm)
MC400EPP00S	10" (254 mm)	36.60" (930 mm)	1.30" (34 mm)
MC400EPP12T	12" (305 mm)	35.60" (907 mm)	1.50" (38 mm)
MC400EPP12S	12" (305 mm)	32.72" (831 mm)	1.50" (38 mm)
MC400EPP15T	15" (378 mm)	29.50" (748 mm)	1.30" (34 mm)
MC400EPP15S	15" (378 mm)	27.50" (700 mm)	1.50" (38 mm)
MC400EPP18T	18" (457 mm)	23.00" (585 mm)	1.50" (38 mm)
MC400EPP18S	18" (457 mm)	21.00" (530 mm)	1.50" (38 mm)
MC400EPP24T	24" (609 mm)	23.00" (585 mm)	2.20" (57 mm)
MC400EPP24S	24" (609 mm)	21.00" (530 mm)	2.20" (57 mm)
MC400EPP30W	30" (762 mm)	---	3.20" (81 mm)
MC400EPP36W	36" (914 mm)	---	3.20" (81 mm)
MC400EPP42W	42" (1067 mm)	---	3.50" (90 mm)

CUSTOM PREFABRICATED INVERTS ARE AVAILABLE UPON REQUEST. IDENTIFIERS MANIFOLDS INCLUDE 12" (305 mm) (100-400 mm) SIZE ON SIZE AND 14" (355 mm) (100-1200 mm) ECCENTRIC MANIFOLDS. CUSTOM INVERT LOCATION ON THE MC-400 END CAP CUT IN THE FIELD ARE NOT RECOMMENDED FOR PIPE SIZES GREATER THAN 10" (254 mm). THE INVERT LOCATION IN COLLUMBY ARE THE HIGHEST POSSIBLE FOR THE PIPE SIZE.



CLUB CAR WASH
WICHITA, KS

DATE: 03/20/21
PROJECT #: 2020047
CHECKED: ALI

StormTech
4645 TULLAMAH BLVD
HILLIARD, OH 43026

5 SHEET OF 5

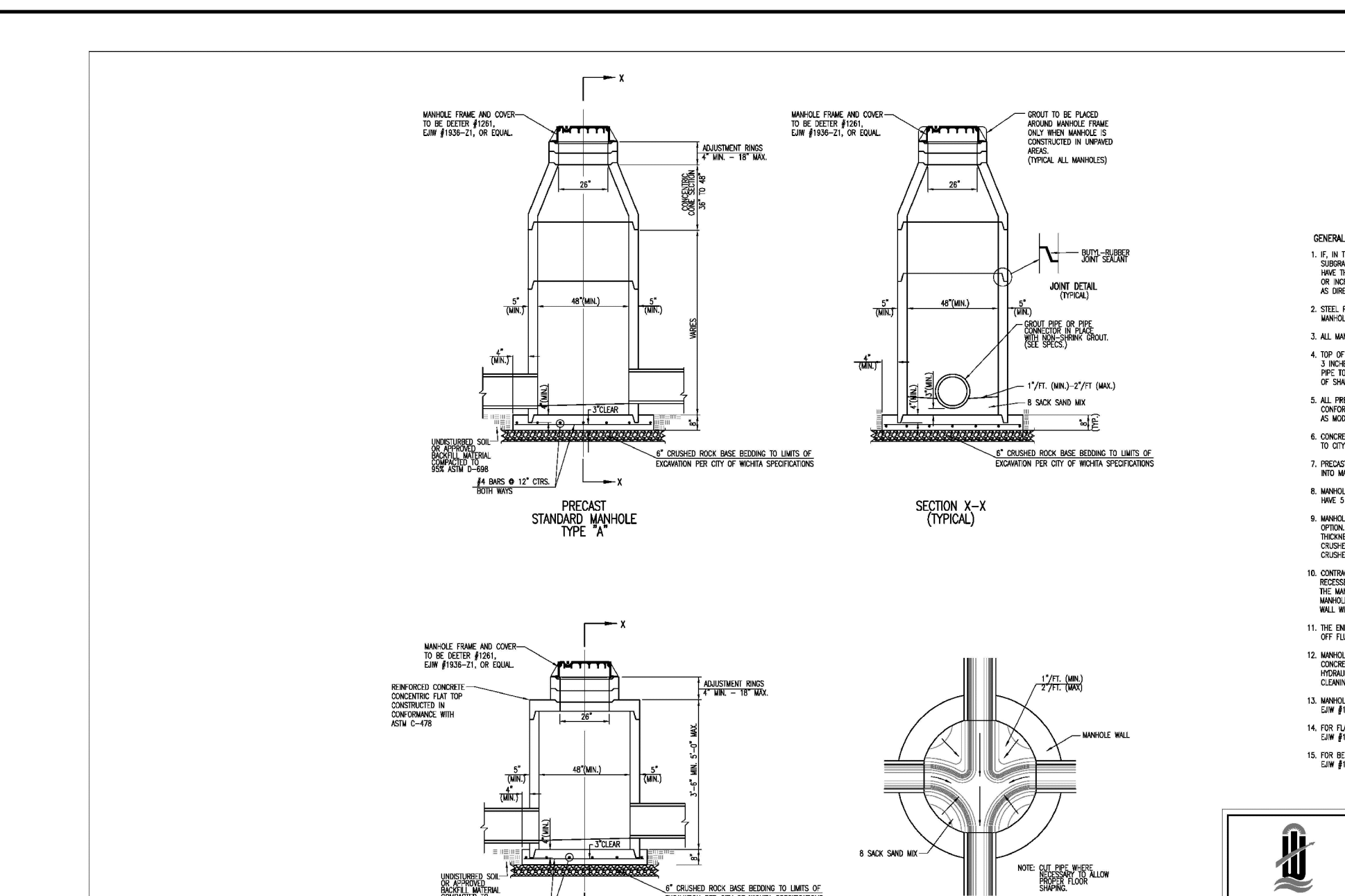


CLUB CAR WASH
WICHITA, KS

DATE: 03/20/21
PROJECT #: 2020047
CHECKED: ALI

StormTech
4645 TULLAMAH BLVD
HILLIARD, OH 43026

4 SHEET OF 5



CLUB CAR WASH
WICHITA, KS

DATE: 03/20/21
PROJECT #: 2020047
CHECKED: ALI

StormTech
4645 TULLAMAH BLVD
HILLIARD, OH 43026

5 SHEET OF 5

OWNER:
ROBERT A BRUNCH
LIVING TRUST
8100 E 22ND ST.
WICHITA, KS 67226

OWNER:
BRUNCH RANCH &
INVESTMENTS TRUST
8100 E 22ND ST.
WICHITA, KS 67226

DEVELOPER:
CLUB CARWASH OPERATING, LLC
1213 OLD HWY 63, STE 101
COLUMBIA, MO 65201

636-332-4574 (tel.)
636-327-0760 (fax)
www.ochran.com

OC HRAN

- Civil Engineering
- Land Surveying
- Architecture
- Site Development
- General Consulting
- Master Planning

North Office
8 East Main Street
Wentzville, Missouri 63385

Kansas State Certificate
Authority Numbers:
E-2927

Two working days prior to the start of any excavation call 1-800-OC-SAFE for utility location information.

All OSHA rules & regulations and all applicable codes and regulations are to be strictly followed. Plans shall be strictly followed (i.e. trenching, blasting, etc.)

KURTIS J. DANIELS
LICENSED PROFESSIONAL ENGINEER
KANSAS
E-26277

STORM SEWER IMPROVEMENTS
CLUB CARWASH
WICHITA, KS