



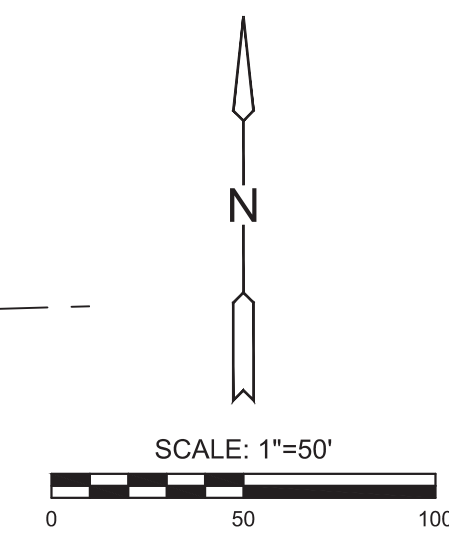
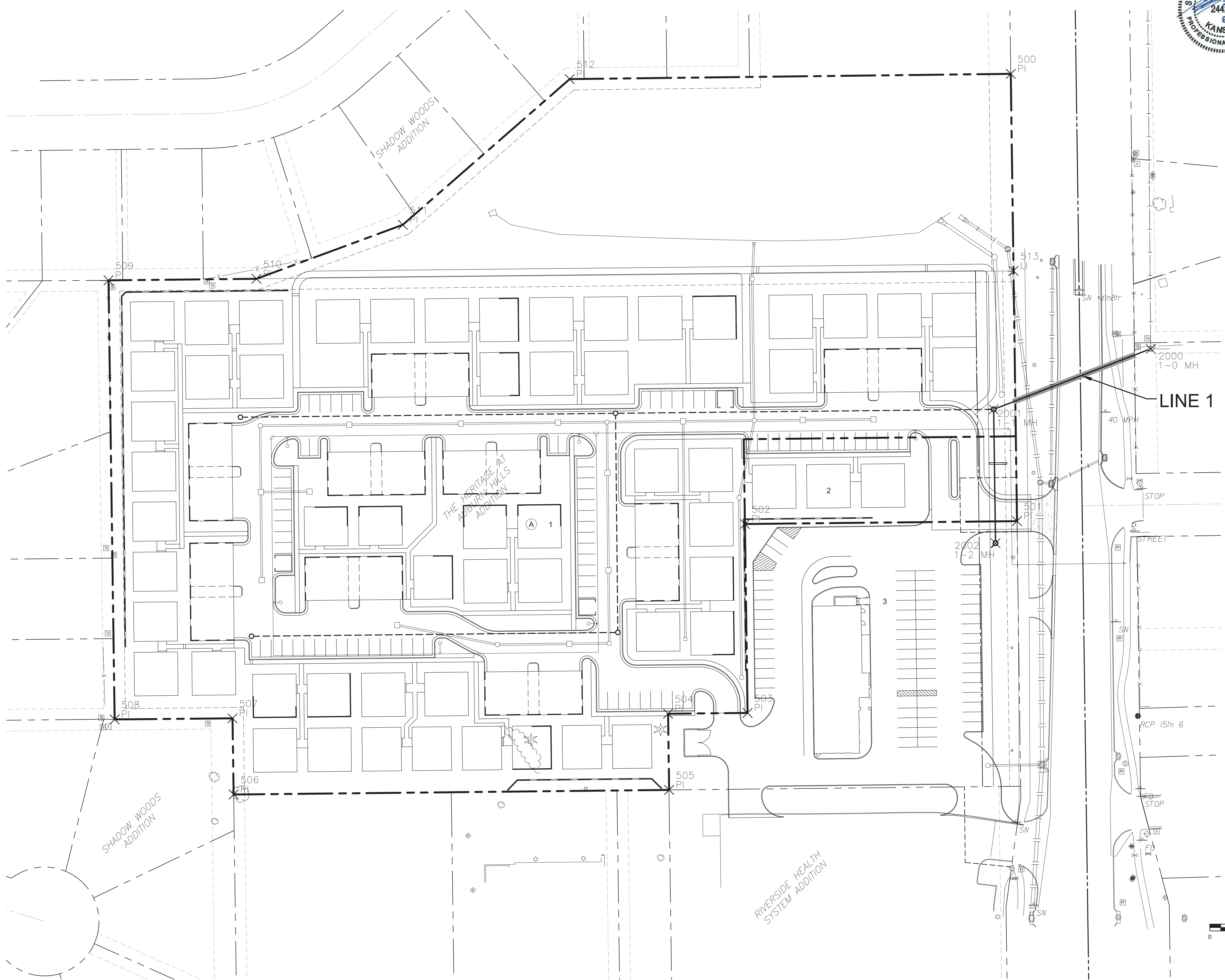
SANITARY POINTS			
Point #	Northing	Eastng	Desc.
2000	1683353.06	1602365.38	1-0 MH
2001	1683297.44	1602221.07	1-1 MH
2002	1683174.55	1602222.77	1-2 MH

PLAT POINTS			
Point #	Northing	Eastng	Desc.
500	1683605.67	1602236.78	PI
501	1683194.75	1602242.50	PI
502	1683192.12	1601992.52	PI
503	1683018.59	1601994.93	PI
504	1683017.82	1601921.91	PI
505	1682947.83	1601922.88	PI
506	1682943.61	1601522.79	PI
507	1683013.61	1601521.71	PI
508	1683012.62	1601413.41	PI
509	1683415.97	1601407.79	PI
510	1683417.38	1601543.71	PI
511	1683467.00	1601678.18	PI
512	1683600.84	1601831.52	PI
513	1683424.64	1602239.30	LI

CONTROL POINTS

- BM (CP #1)
Top of 5/8" rebar encased in concrete,
50 feet south of centerline of 23rd St.
70 feet east of east edge of the school exit road
35 feet west of centerline of north/south hedge.
Elev. = 1444.03' NAVD 88
 - CP #1
5/8" rebar in concrete
N = 1671759.24 E = 1584158.43 Elevation 1444.03'
50 feet south of centerline 23rd St South
70 feet east of east edge of school exit road
 - CP #2
5/8" rebar with red MKEC cap
N = 1671833.22 E = 1585890.52 Elevation 1440.80'
6 feet south of south edge of 23rd St.
795 feet west of centerline 183rd St/23rd St intersection
90 feet Southeast of centerline end of culvert
 - CP #3
5/8" rebar with red MKEC cap
N = 1669986.35 E = 1586340.37 Elevation 1427.21'
1870 feet south of 23rd street
300 feet west of 183rd street
 - CP #4
5/8" rebar with red MKEC cap
N = 1669505.65 E = 1584095.22 Elevation 1448.85'
75.15 feet northeast of center of section
52.5 feet north of centerline of hedge row
49.0 feet east of centerline of hedge row
2292 feet south of 23rd St. and 2518 feet west of 183rd St.
- Horizontal and Vertical Datum:
Horizontal Datum: Kansas Coordinate System 1983 South Zone.
(Horizontal coordinates modified to ground using a scale factor of 1.000120014)
Vertical Datum: NAVD 88

EVERY ATTEMPT HAS BEEN MADE TO INSURE ALL COORDINATE VALUES SHOWN ARE AN ACCURATE AND TRUE REPRESENTATION OF THE CURRENT PLANS. ALL VALUES ARE TO BE CONFIRMED WITH THE FINAL SIGNED PLAN SET BEFORE USE.



PLOTTED: Monday, August 30, 2021 @ 10:45AM
 W:\PROJECTS\2020\20201010338\CT CAPITAL_183RD & MAPLE\00 20338 CAD\SHS\06 CIVIL\PLAN\PUBLIC\20338 BUBBLE MAP.DWG



SANITARY SEWER PLANS FOR
HERITAGE AT AUBURN HILLS ADD.
 WICHITA, KANSAS

©2021 MKEC Engineering All Rights Reserved www.mkec.com
 These drawings and their contents, including, but not limited to, all concepts, designs, & details are the exclusive property of MKEC Engineering (MKEC), and may not be used or reproduced in any way without the express consent of MKEC.

BUBBLE MAP

PROJECT NO.	468-2019-020418
DATE	JULY 2021
SCALE	1"=50'
DESIGNED	MKB
DRAWN	CJL
CHECKED	SPE

NO.	REVISION	DATE

SHEET NO.
05 OF 10