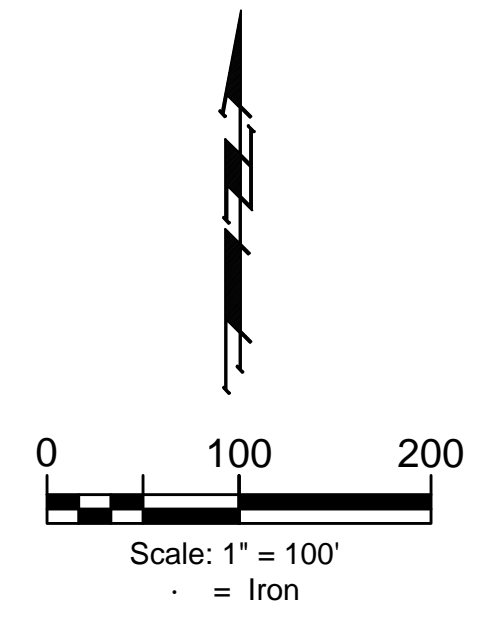


# SANITARY SEWER IMPROVEMENTS to serve MIES ADDITION CITY OF WICHITA, KANSAS

Gary Janzen, P.E. City Engineer  
Project Number: 468-2022-014512  
Org Code Number: E2056  
Munis Number: 47266422

Mies Construction - Contractor  
S. Lowe - City of Wichita, Field Project Engineer  
R. Carillo - City of Wichita, Inspector  
As-built  
Stubs & Risers  
Release Date (for connection purposes only): 10/18/2022  
Completion Date:  
pdf: apr 11/7/2022

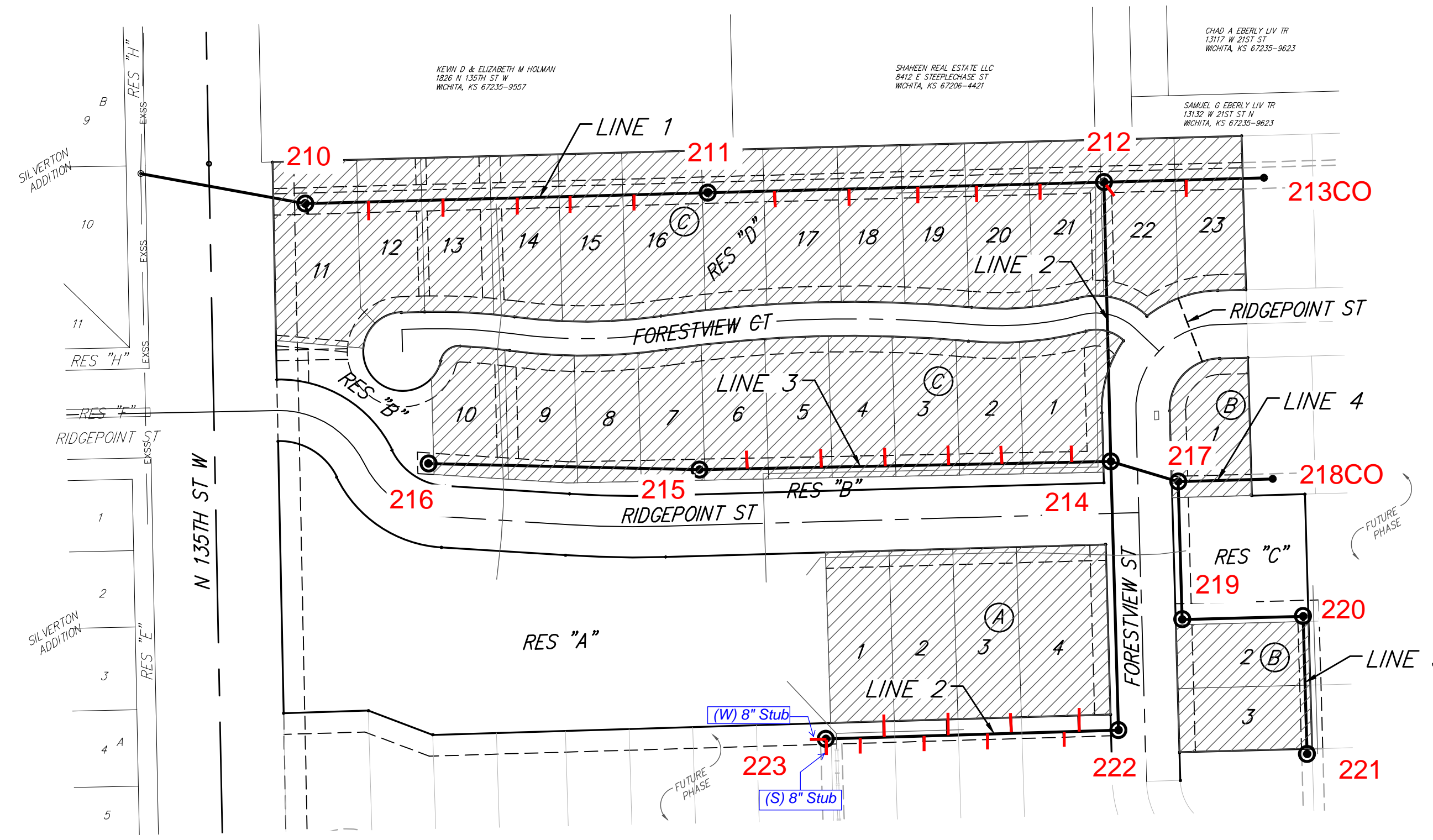


## GENERAL NOTES:

- Contractor will be required to provide notice to utility companies a minimum of forty-eight (72) hours prior to any excavation, as follows:  
  
Kansas One-Call 687-2470  
  
The Contractor must notify the following in case of an emergency:  
  
Cox Communications 262-4270  
Kansas Gas Service 1-888-482-4950  
Evergy 383-8650  
Black Hills Energy 1-800-303-0357  
ATT 268-2245  
City of Wichita Water Dept. 268-4563  
City of Wichita Sewer Maint. 268-4024  
City of Wichita Storm Sewer Maint. 268-4090  
City of Wichita Traffic Maint. 268-4034  
SG. CO. Rural Water District #4 794-7320
- Utility service lines, poles, valve boxes, meters, and etcetera are to be adjusted as necessary by others prior to construction unless the plans specifically call for their adjustment by the Contractor or unless the plans specifically identify a utility to be adjusted by its owner during construction. Existing utilities and their location, as shown on the plans, represent the best information obtainable for design. The Contractor will be required to work around existing utilities within the right-of-way which do not conflict with proposed construction.
- Rubble from the removal of miscellaneous structures and excess excavation which is to be wasted shall be disposed of on sites to be provided by the Contractor. These sites shall be approved by the Engineer as to suitability, appearance and site location. Locations, in the opinion of the Engineer, that will leave an unsightly appearance will not be approved. All disposal sites must be approved by the Kansas Department of Health and Environment. Material either stockpiled or disposed of in a flood plain would require a Kansas State Board of Agriculture permit. Any material dumped in waters of the United States or wetlands is subject to U.S. Corps. of Engineers permitting regulations. Any material buried or stockpiled beyond approved construction limits would require additional archaeological investigations unless buried in a previously approved borrow location.
- Trees and shrubs in public right-of-way which are in direct conflict with proposed new construction shall be removed by the Contractor with the Engineer's approval. Trees and shrubs which are not in direct conflict with proposed new construction shall be saved and protected from damage.
- The Contractor shall give all property owners and/or tenants of developed property abutting the construction of this project a minimum of ten (10) days notice prior to start of construction.
- The Contractor shall be responsible for preserving property irons. The Contractor will be required to re-establish any property irons which are damaged or destroyed by his construction operations. Such irons shall be re-established by a licensed land surveyor in accordance with state laws.

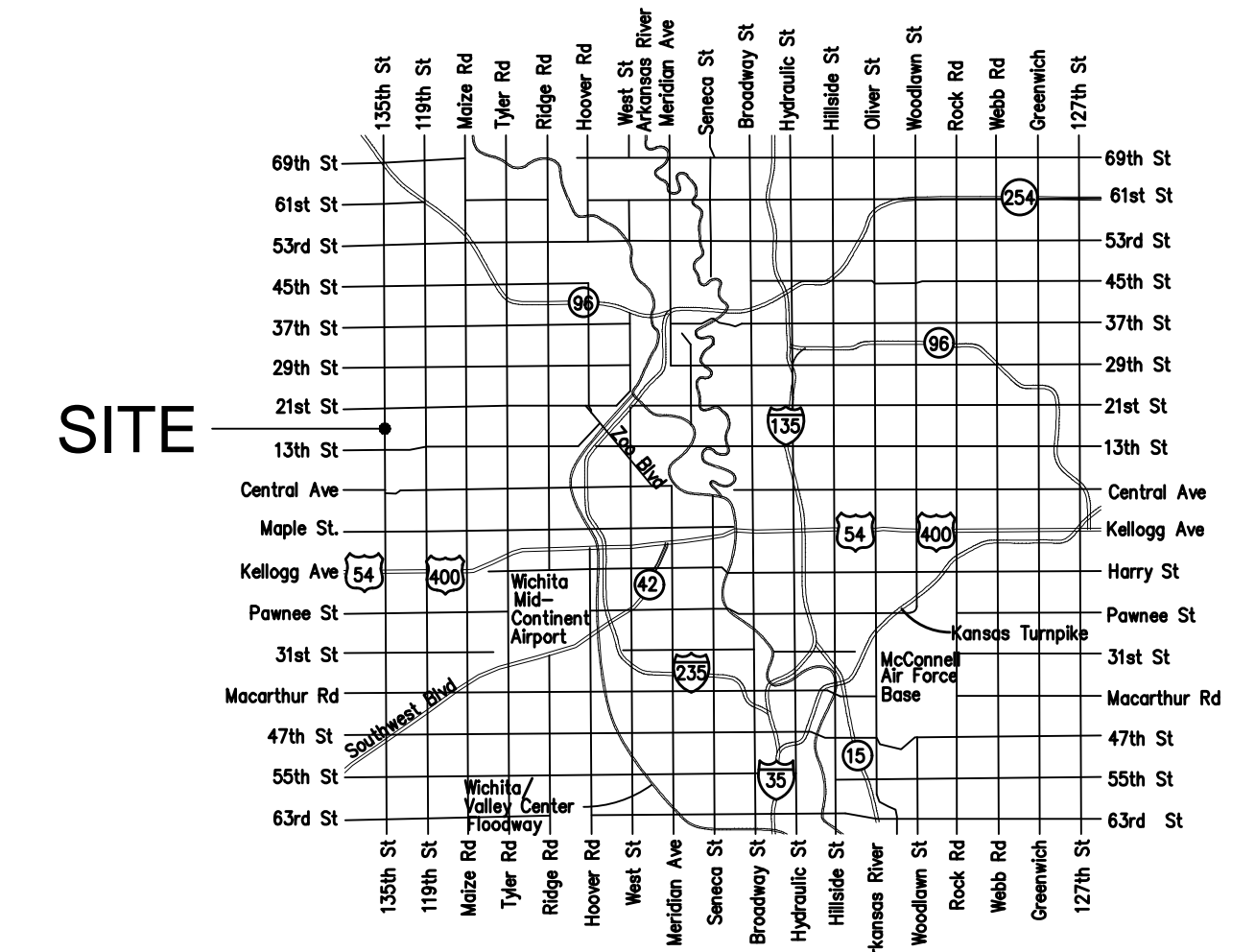
- All existing and proposed erosion control measures including silt fencing, erosion control mat, straw bales, inlet barriers, and const. entrance shall be maintained throughout construction by the contractor and until project is accepted by the City of Wichita. The on-site engineer shall complete weekly reports on the status of erosion control measures. The contractor shall be required to comply with maintenance and/or replacement of erosion control measures as determined by the on-site engineer until project is accepted by City of Wichita. Maintenance and/or replacement of erosion control measures to be paid by L.S. bid item "Maintain Existing BMP's."
- All excess excavation shall remain on-site and shall be stockpiled or spread at a location determined by the Engineer.
- The Contractor shall be responsible for maintaining continuous flow of sewage through construction. Contractor's proposed method for maintaining sewage flow shall be approved by the Engineer. Cost of maintaining flow of sewage through construction will not be paid for directly and this cost shall be considered as subsidiary to the other pay items of work.
- All areas disturbed by construction within the Mies Addition plat and east R/W of 135th St. W. are to be seeded as follows:  
  
Seed -- Rye grass; 5 lbs./1000 Sq. Ft.  
  
West R/W of 135th shall be re-sodded to match existing grass.  
  
All costs associated with seeding including mobilization, preparation of ground, seeding, fertilizing, mulching, etc. shall be included in the L.S. bid item "Seeding".
- Trees and shrubs in the work area which are in direct conflict with proposed new construction shall be removed by the Contractor ONLY with the Developer or Baughman Company approval. Trees and shrubs which are not in direct conflict with proposed new construction shall be saved and protected from damage. If trimming is necessary, a chainsaw shall be used. Breaking limbs with equipment will not be allowed. An on-site pre-construction meeting will occur prior to any construction to discuss tree removal, tree protection, and tree trimming.
- All construction equipment, including vehicles, materials, and debris, shall be stored outside of the clear zone. Where this cannot be achieved the contractor shall place appropriate signs, object identifiers, and/or barricades in compliance with the MUTCD.
- The developer for this project is, Jay Russell, Address: PO Box 75337, Wichita, KS 67272 Phone: 316-990-2105 Email: jrussellco.com

4649C  
NWI-04



## SHEET INDEX

Title Sheet	1
Line 1	2-3
Line 2	4-5
Line 3	6
Line 4 & 5	7
Erosion Control Plan	8
Erosion Control BMP Details	9-13
Standard Manhole Detail	14
Frame & Cover Detail	15
Vertical Riser Detail	16
Cleanout Riser Assembly Detail	17
Coordinate Sheet	18
Copy of Plat	19



## VICINITY MAP

## CONSTRUCTION PHASING

The goal of the phasing is to complete all construction serving or adjacent to Mies Addition (Lots 1-4 Blk. A, Lots 1-3 Blk. B, & Lots 1-23 Blk. C). As soon as possible.

- The following may be built in the order that the contractor desires. All sanitary sewer lines, all water lines, storm sewer lines 1-5, mass grading within and adjacent to Mies Addition, Reserve "A" & "C" ponds, & all paving.
- The remaining storm sewer lines & mass grading construction will be finished following all Mies Addition construction and as allowed based on KDWP permit and stockpile/berm removals.

## SITE CONDITION NOTES:

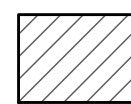
- Eastern Spotted Skunk habitat:** The treed area within the proposed Mies 2nd Addition plat (see SWD cover sheet) has been designated as critical habitat for the Eastern Spotted Skunk. A mitigation plan and action permit are required by KDWP for construction in the critical habitat area. These two items are in process and are required to be completed prior to construction within the treed areas. Construction and/or tree removal will not be allowed on site until the KDWP mitigation plan and action permit are approved and written permission is obtained from KDWP.
- Existing material stockpiles:** The existing material stockpiles (crushed asphalt & crushed concrete) and frontage berms along 135th St. W. belong to Mies Construction. The piles and berms will be moved by Mies Construction coincidentally with sewer, water, storm water drain, and paving construction. The removal or relocation of the piles will be coordinated with Mies Construction and the project contractor.
- Existing steel gates and concrete blocks:** The existing steel gates, cattle guard, and concrete blocks belong to Mies Construction. Coordinate removal of these items with Mies Construction.
- De-mobilization and Re-mobilization** may be required to complete the construction including mass grading and pond construction outside of the Mies Addition plat. Costs for de-mobilization and re-mobilization shall be incidental to project costs.

## BENCHMARKS

CHISELED CROSS ON FACE OF WALK,  
578.1' N. OF THE MOST WESTERLY NW  
COR., LOT 1, BLOCK A, R. D. WOOD  
COMMERCIAL ADDITION, (SAID MOST  
WESTERLY NW COR. BEING A POINT ON  
THE E. R/W LINE OF N 135TH ST. W.), &  
44.1' E. OF THE W. LINE, SW1/4, SEC. 12,  
TWP. 27-S, R-2-W.  
ELEV. = 1357.30 NAVD88

CHISELED CROSS ON NE COR. OF CATCH  
BASIN, 36.4' W. & 11.8' S. OF SW COR.,  
RESERVE "A", R. D. WOOD COMMERCIAL  
ADDITION.  
ELEV. = 1353.98 NAVD88

BENEFIT DISTRICT



APPROVED AS NOTED  
BY WICHITA PUBLIC WORKS ENGINEERING

Engineering \_\_\_\_\_

An approved copy of these plans signed by City staff are required on-site.



July 13, 2022

**BAUGHMAN COMPANY**  
315 Ellis St. Wichita, KS 67211 316-262-7271  
BaughmanCo.com

E:\Projects\Mies Addition\_SSS PLANS.dwg

Sanitary Sewer Riser Location Table Verification

Project Name: Mies Addn

Project Location: N. of W. 13<sup>th</sup> St. N. & E. of 135<sup>th</sup> St. N.

Project No.: 468-2022-014512

OCA No.: 47266422/E20510

Contractor: Mies

Inspector: R. Carrillo

Riser No.	Line No.	Station	Distance from Main to Riser (Lt./Rt.)	Distance from	
				Upstream MH	Downstream MH
1	1	1+57.6	10.1 RT	Stub at MH	
2	1	2+17.1	10 RT	220	59.5
3	1	2+87.5	10 RT	249.4	129.5
4	1	3+57.5	9.9 RT	179.4	199.9
5	1	4+07.1	10 RT	130	249.5
6	1	4+47.1	10 RT	70	309.5
7	1	6+00.1	10 RT	310.5	63
8	1	6+70.1	10 RT	240.5	133
9	1	7+35.1	10 RT	175.5	198
10	1	7+90.1	10 RT	120.5	253
11	1	8+50.1	10 RT	100.5	313
12	1	9+10.6	10 RT	Stub at MH	
13	1	9+87.6	10 RT	48.8 Cleanout	77
14	2	5+53.7	15 RT	238.9	37
15	2	5+68.2	5 LT	224.4	51.5
16	2	6+17.6	15 RT	175	100.9
17	2	6+40.1	5 LT	152.5	123.4
18	2	6+77.6	15 RT	115	160.9
19	2	7+00.1	5 LT	92.5	183.4
20	2	7+37.6	15 RT	55	220.9
21	2	7+40.1	5 LT	32.5	243.4
22	3	0+37.1	10 RT	350.7	37.1
23	3	1+02.9	10 RT	284.9	102.9
24	3	1+52.9	10 RT	234.9	152.9
25	3	2+12.9	10 RT	174.9	212.9
26	3	2+72.9	10 RT	114.9	272.9
27	3	3+42.9	10 RT	44.9	3+42.9

**BENCHMARK:**  
 CHISELED CROSS ON FACE OF WALK,  
 578.1' N. OF THE MOST WESTERLY NW  
 COR. LOT 1, BLOCK A, R. D. WOOD  
 COMMERCIAL ADDITION, (SAID MOST  
 WESTERLY NW COR. BEING A POINT ON  
 THE E. R/W LINE OF N 135TH ST. W.), &  
 44.1' E. OF THE W. LINE, SW 1/4, SEC. 12,  
 TWP. 27-S, R-2-W.  
 ELEV. = 1357.30 NAVD88

CHISELED CROSS ON NE COR. OF CATCH  
 BASIN, 36.4' W. & 11.8' S. OF SW COR.,  
 RESERVE "A", R. D. WOOD COMMERCIAL  
 ADDITION.  
 ELEV. = 1353.98 NAVD88

The Contractor shall be required to  
 bore & jack 8" PVC with 18" steel  
 casing from Sta. 0+00.0 to Sta.  
 1+48.0, Line 1. To be bid as "L.F.  
 Casing by Boring & Jacking"

Sta. 0+00.0, Begin Line 1  
 Core Ex. 5' Lined MH  
 & Extend 8" Pipe (E)  
 Contractor to Verify  
 Depth & Location of Existing  
 Manhole Prior to Construction  
 Ex. Top Elev. = 1360.10

Remove Tree as Necessary for  
 Construction. Replace With Similar  
 Type Tree (2" Caliper) if Removed.  
 Cost of Replacement Included in  
 "Site Restoration"

CAUTION!  
 Black Hills  
 Gas Line Crossing,  
 Depth Unknown

CAUTION!  
 24" Wtr Line  
 Crossing

CAUTION!  
 8" RWD  
 Crossing

Remove/Replace Existing 10'  
 Sidewalk to Nearest Joint as  
 Necessary for Construction.  
 Cost of Replacement  
 Included in "Site Restoration"

CAUTION!  
 12" Wtr Line  
 Crossing

CAUTION!  
 9' X 4'  
 RCBC Crossing

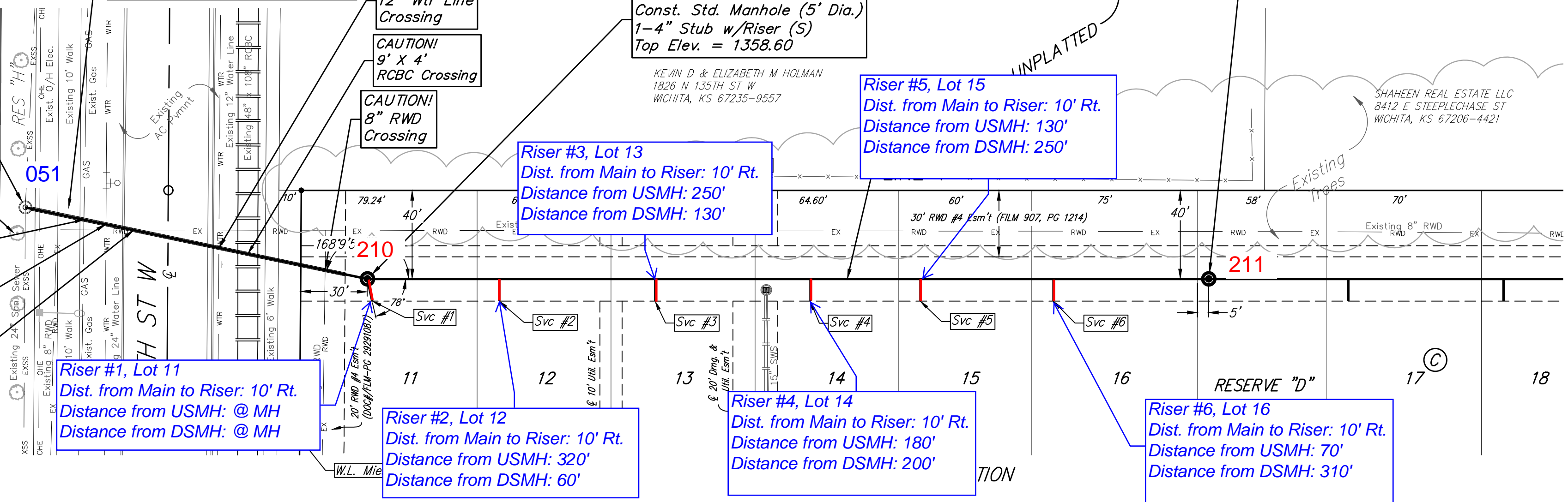
CAUTION!  
 8" RWD  
 Crossing

Sta. 1+57.6, Line 1  
 Const. Std. Manhole (5' Dia.)  
 1-4" Stub w/Riser (S)  
 Top Elev. = 1358.60

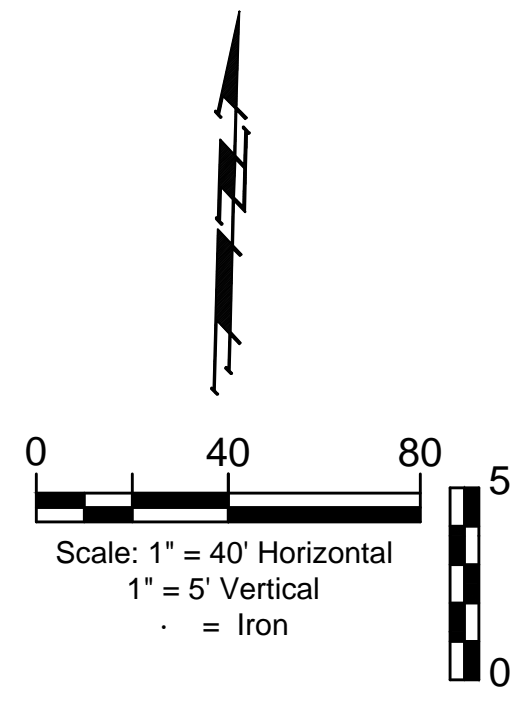
Riser #3, Lot 13  
 Dist. from Main to Riser: 10' Rt.  
 Distance from USMH: 250'  
 Distance from DSMH: 130'

Riser #5, Lot 15  
 Dist. from Main to Riser: 10' Rt.  
 Distance from USMH: 130'  
 Distance from DSMH: 250'

Sta. 5+37.1, Line 1  
 Const. Std. Manhole (5' Dia.)  
 Top Elev. = 1359.90  
 Match Point



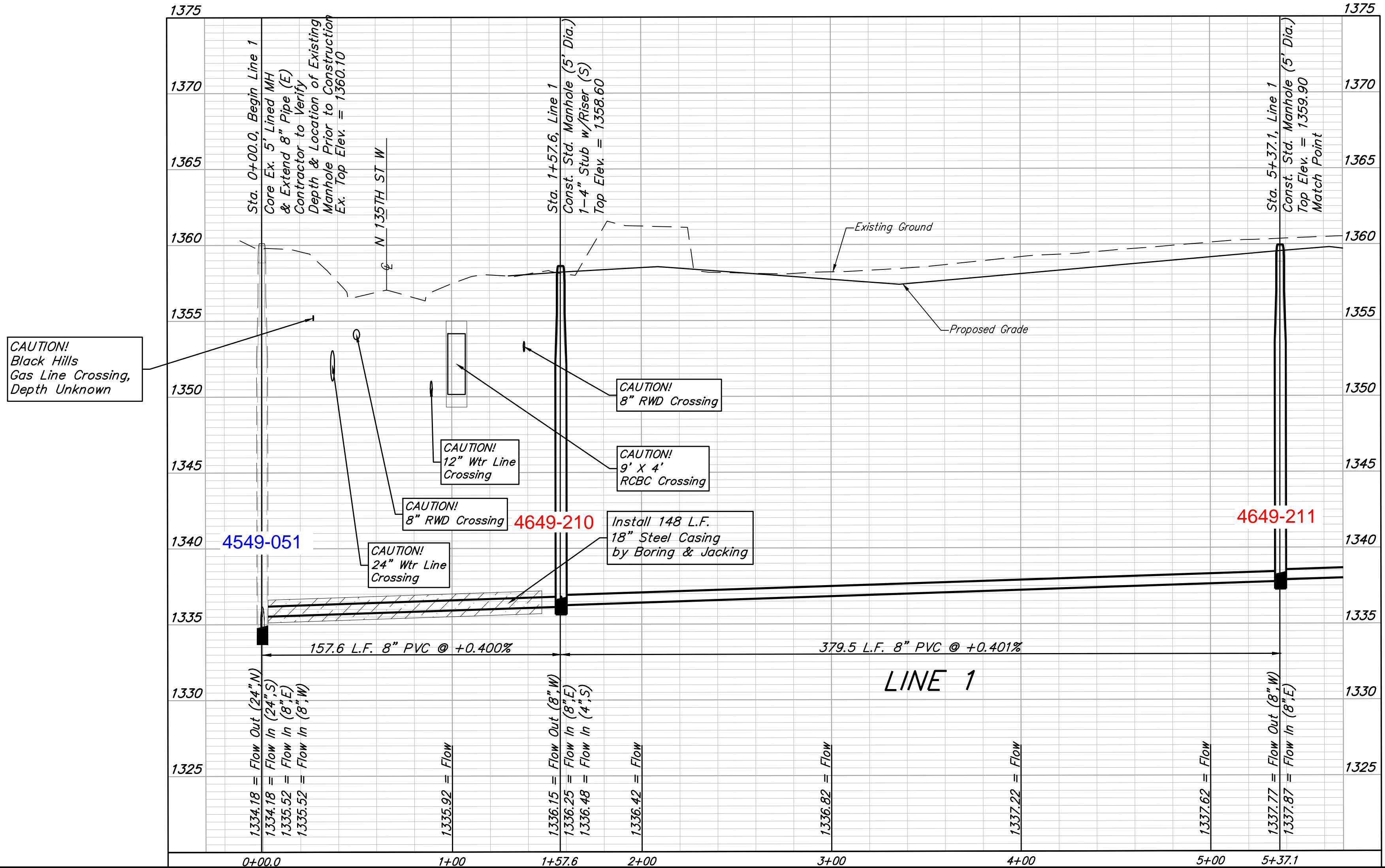
Existing Sprinkler System in Conflict With Construction Shall be  
 Removed/Replaced/Repaired and Shall be Tested to Ensure it is Working  
 Properly. Contact Yeisley Lawn Care (Alex Williams, 316-806-2366) to  
 Coordinate Sprinkler Line Operation. Costs to be Included in "Site  
 Restoration."



SEWER SERVICE TABLE

NUMBER	TYPE	LOCATION				FOR INFORMATION ONLY	
		LOT NO.	BLOCK NO.	LINE NO.	STATION/DIRECTION	APPROXIMATE LENGTH 4" PIPE VERTICAL	HORIZONTAL
1	4" Stub	11	C	1	1+57.60/Rt.	17.9	10.2
2	8" X 4" Tee	12	C	1	2+17.10/Rt.	17.0	10.0
3	8" X 4" Tee	13	C	1	2+87.50/Rt.	16.0	10.0
4	8" X 4" Tee	14	C	1	3+57.50/Rt.	15.3	10.0
5	8" X 4" Tee	15	C	1	4+07.10/Rt.	15.7	10.0
6	8" X 4" Tee	16	C	1	4+67.10/Rt.	15.8	10.0

NOTE: Vertical Riser Pipe shall be extended to 2' minimum above ground water elevation and 4' maximum below proposed ground elevation.



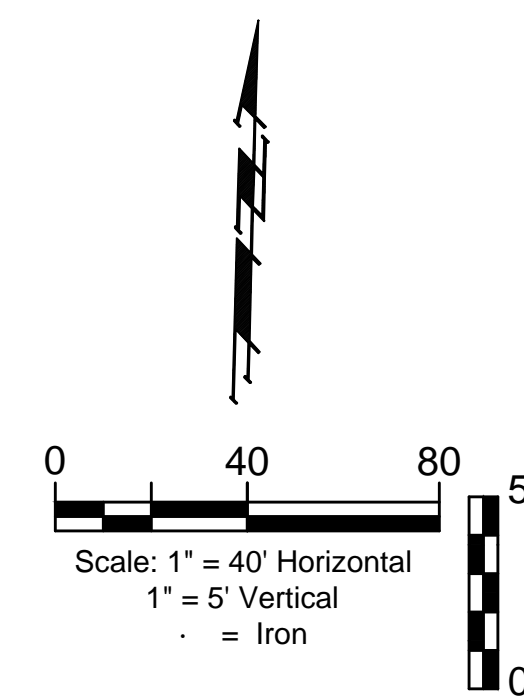
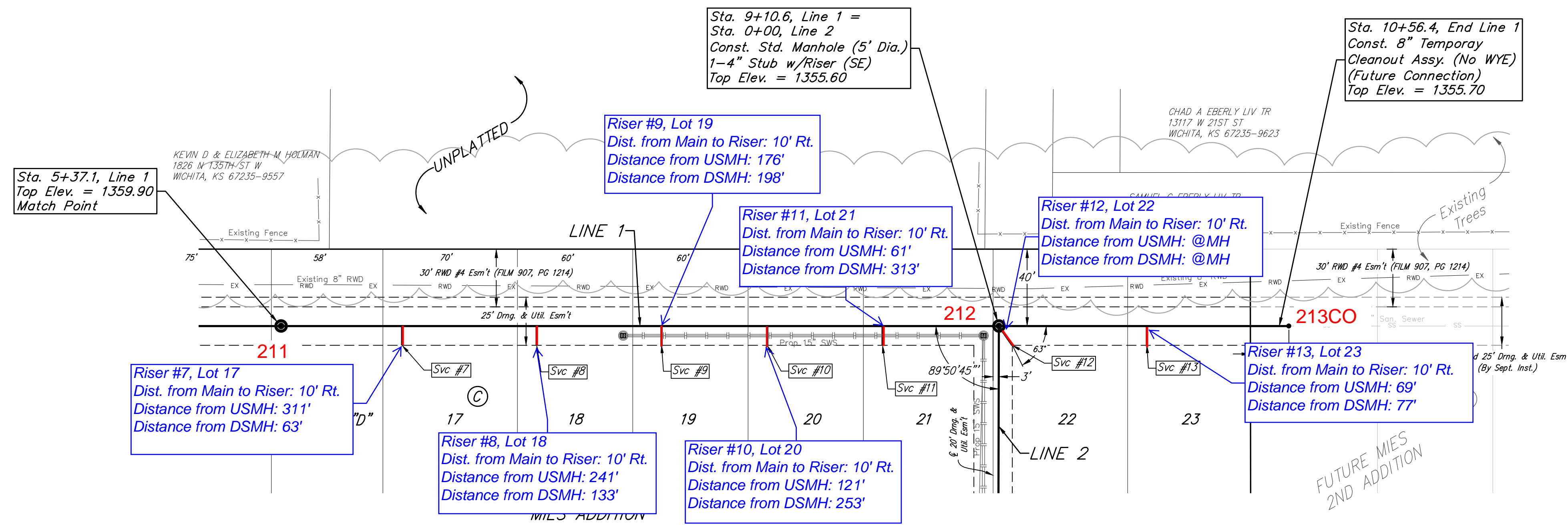
**BAUGHMAN COMPANY**  
 315 Ellis St.  
 Wichita, KS 67211  
 BaughmanCo.com

MIES ADDITION  
**LINE 1**  
 SANITARY SEWER  
 IMPROVEMENTS  
 PROJECT NUMBER:  
 468-2022-014512  
 DESIGN: AEG DRAWN: CDW  
 DATE: July 13, 2022  
 SHEET 2 OF 19

File: E:\Projects\Mies Addition\_1\Engineering\SS PLANS.dwg

BENCHMARK:  
CHISELED CROSS ON FACE OF WALK,  
578.1' N. OF THE MOST WESTERLY NW  
COR. LOT 1, BLOCK A, R. D. WOOD  
COMMERCIAL ADDITION, (SAID MOST  
WESTERLY NW COR. BEING A POINT ON  
THE E. R/W LINE OF N 135TH ST. W.), &  
44.1' E. OF THE W. LINE, SW 1/4, SEC. 12,  
TWP. 27-S, R-2-W.  
ELEV. = 1357.30 NAVD88

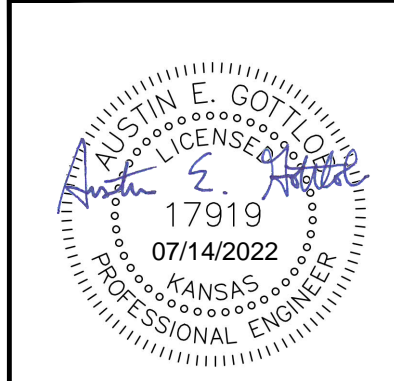
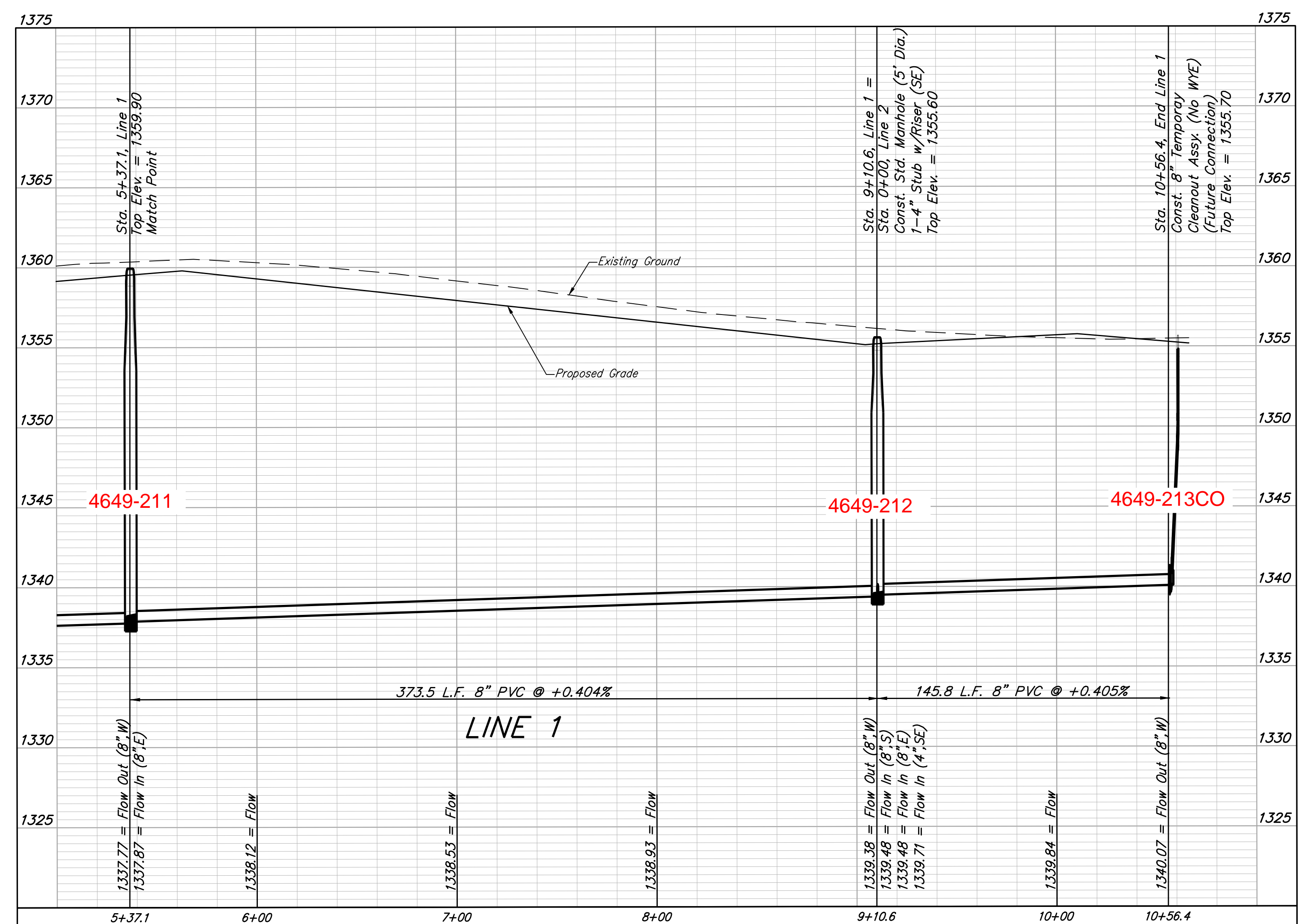
CHISELED CROSS ON NE COR. OF CATCH  
BASIN, 36.4' W. & 11.8' S. OF SW COR.  
RESERVE "A", R. D. WOOD COMMERCIAL  
ADDITION.  
ELEV. = 1353.98 NAVD88



SEWER SERVICE TABLE

NUMBER	TYPE	LOCATION				FOR INFORMATION ONLY	
		LOT NO.	BLOCK NO.	LINE NO.	STATION/DIRECTION	APPROXIMATE LENGTH 4" PIPE	
						VERTICAL	HORIZONTAL
7	8" X 4" Tee	17	C	1	6+00.10/Rt.	15.8	10.0
8	8" X 4" Tee	18	C	1	6+70.10/Rt.	14.6	10.0
9	8" X 4" Tee	19	C	1	7+35.10/Rt.	13.4	10.0
10	8" X 4" Tee	20	C	1	7+90.10/Rt.	12.4	10.0
11	8" X 4" Tee	21	C	1	8+50.10/Rt.	11.4	10' 9.7"
12	4" Stub	22	C	1	9+10.60/Rt.	11.6	10' 5.4"
13	8" X 4" Tee	23	C	1	9+87.60/Rt.	10.6	10.0

NOTE: Vertical Riser Pipe shall be extended to 2' minimum above ground water elevation and 4' maximum below proposed ground elevation.



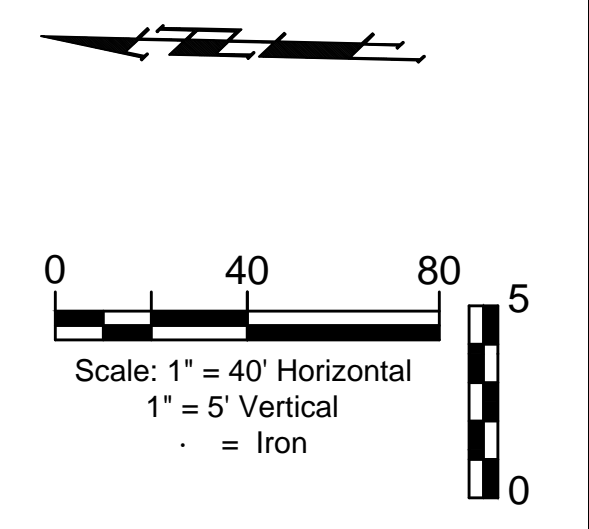
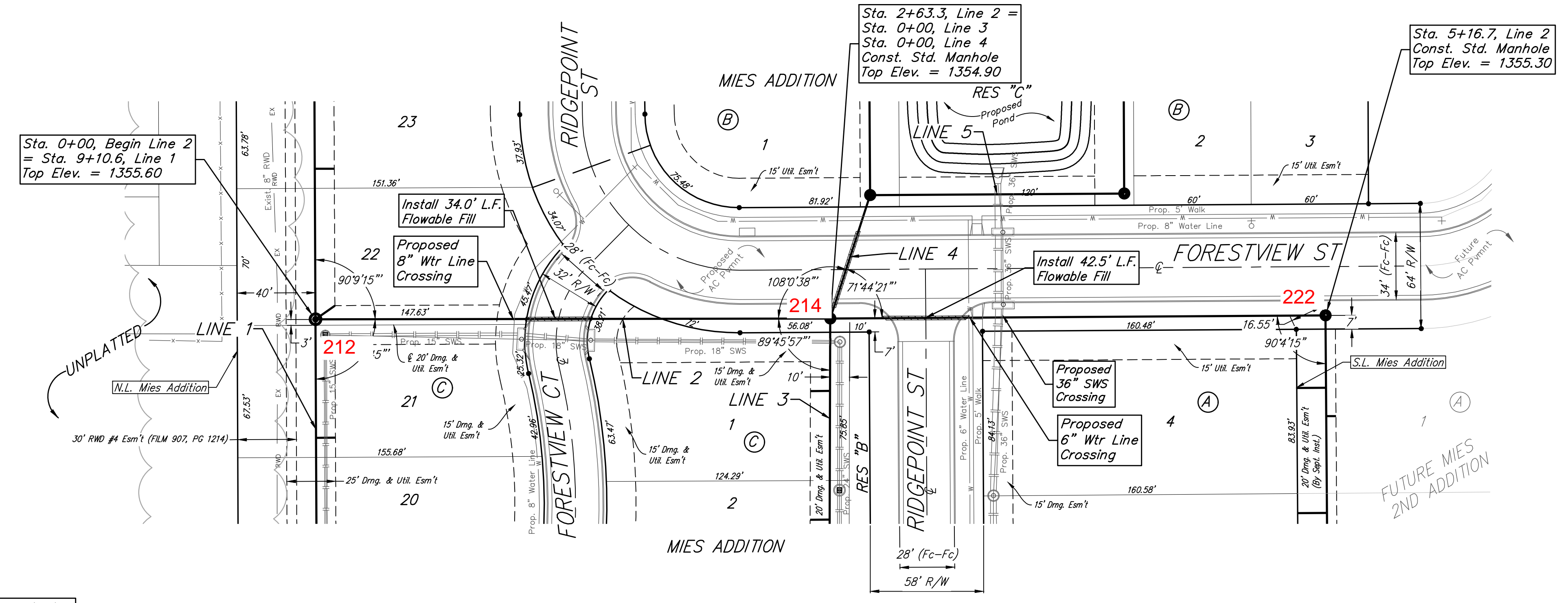
**BAUGHMAN COMPANY**  
315 Ellis St.  
Wichita, KS 67211  
316-262-7271  
BaughmanCo.com

MIES ADDITION  
**LINE 1**  
SANITARY SEWER IMPROVEMENTS  
PROJECT NUMBER:  
468-2022-014512  
DESIGN: AEG DRAWN: CDW  
DATE: July 13, 2022  
SHEET 3 OF 19

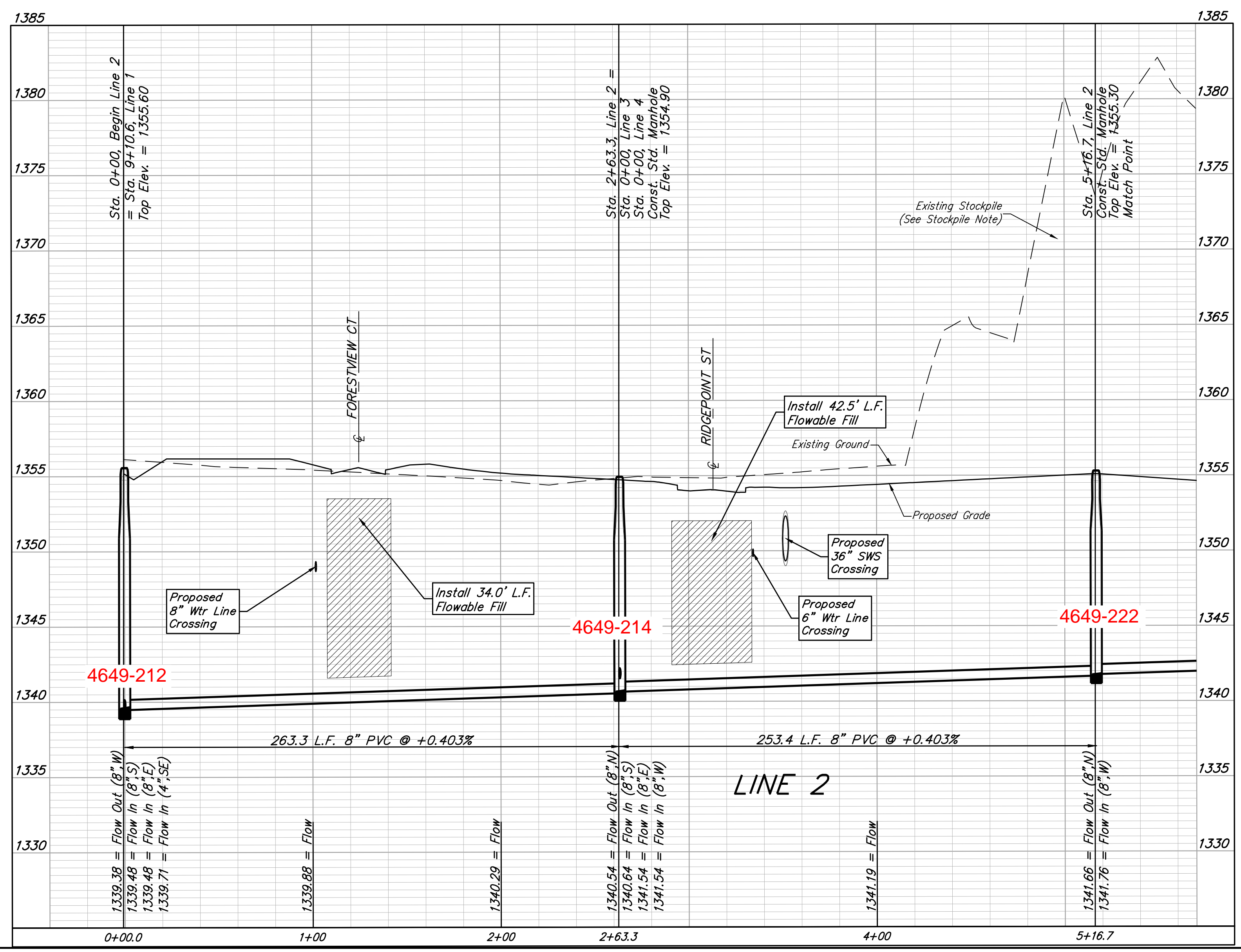
File: E:\Projects\Mies Addition\_Engineering\SS PLANS.dwg

BENCHMARK:  
CHISELED CROSS ON FACE OF WALK,  
578.1' N. OF THE MOST WESTERLY NW  
COR. LOT 1, BLOCK A, R. D. WOOD  
COMMERCIAL ADDITION, (SAID MOST  
WESTERLY NW COR. BEING A POINT ON  
THE E. R/W LINE OF N 135TH ST. W.), &  
44.1' E. OF THE W. LINE, SW 1/4, SEC. 12,  
TWP. 27-S, R-2-W.  
ELEV. = 1357.30 NAVD88

CHISELED CROSS ON NE COR. OF CATCH  
BASIN, 36.4' W. & 11.8' S. OF SW COR.,  
RESERVE "A", R. D. WOOD COMMERCIAL  
ADDITION.  
ELEV. = 1353.98 NAVD88



From Sta. 0+00 to Sta. 1+08, Line 2 the Contractor shall be required to use stacked trench boxes to minimize trench width. Where trench width is expected to exceed easement width, sand backfill, flushed and vibrated will be required up to elevation 1354.5. All costs associated with sand backfill, flushing, etc. in these areas will be considered subsidiary to the pipe cost. If the trench width does not exceed the easement width, or if trench width exceeds the easement width above the noted elevation, no additional backfill requirements are necessary.



**BAUGHMAN COMPANY**  
315 Ellis St.  
Wichita, KS 67211  
316-262-7271  
BaughmanCo.com

MIES ADDITION

**LINE 2**

SANITARY SEWER IMPROVEMENTS

PROJECT NUMBER:  
468-2022-014512

DESIGN: AEG DRAWN: CDW

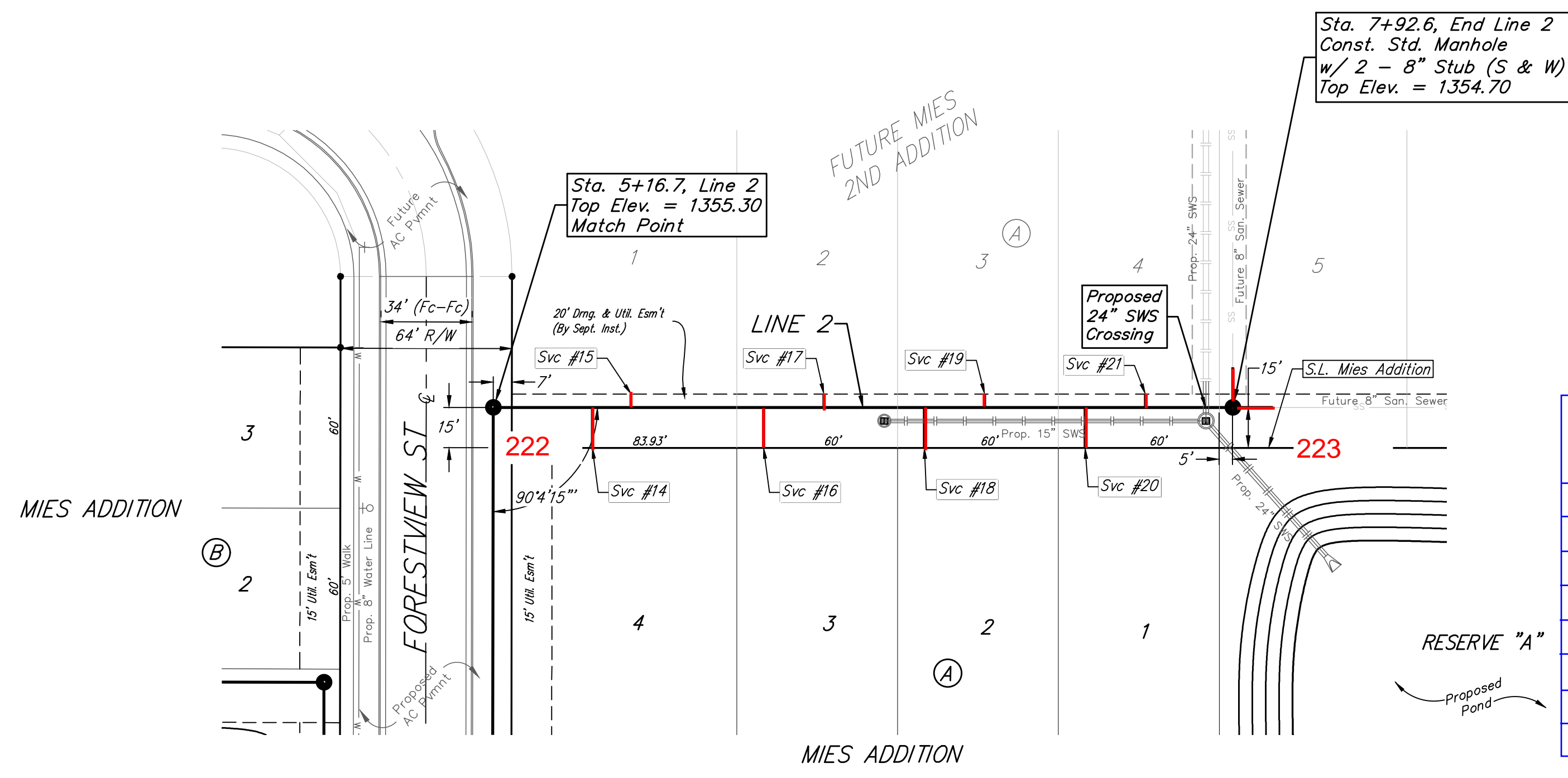
DATE: July 13, 2022

SHEET 4 OF 19

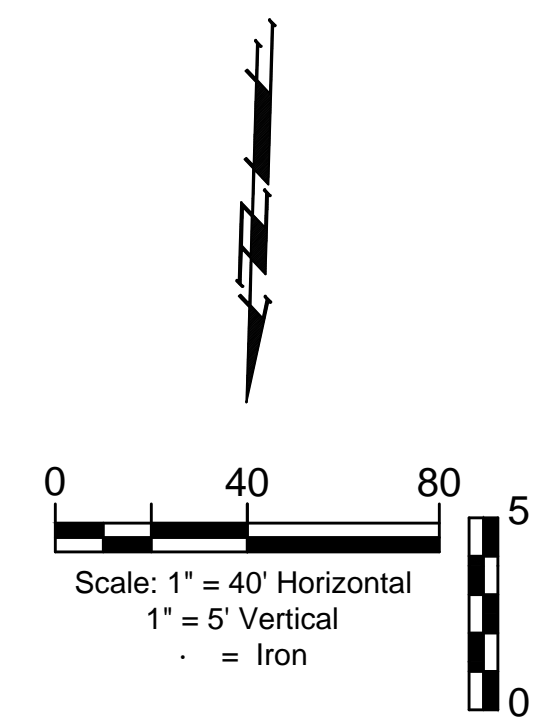
File: E:\Projects\Mies Addition\_1\Engineering\SS PLANS.dwg

BENCHMARK:  
CHISELED CROSS ON FACE OF WALK,  
578.1' N. OF THE MOST WESTERLY NW  
COR. LOT 1, BLOCK A, R. D. WOOD  
COMMERCIAL ADDITION, (SAID MOST  
WESTERLY NW COR. BEING A POINT ON  
THE E. R/W LINE OF N 135TH ST. W.), &  
44.1' E. OF THE W. LINE, SW 1/4, SEC. 12,  
TWP. 27-S, R-2-W.  
ELEV. = 1357.30 NAVD88

CHISELED CROSS ON NE COR. OF CATCH  
BASIN, 36.4' W. & 11.8' S. OF SW COR.,  
RESERVE "A", R. D. WOOD COMMERCIAL  
ADDITION.  
ELEV. = 1353.98 NAVD88



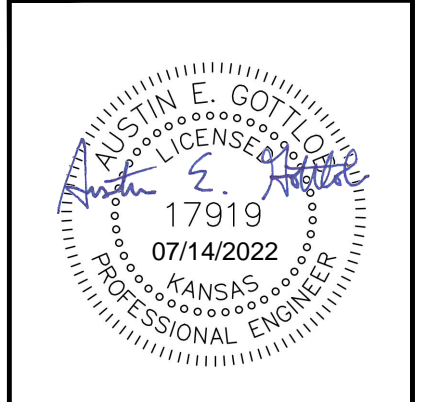
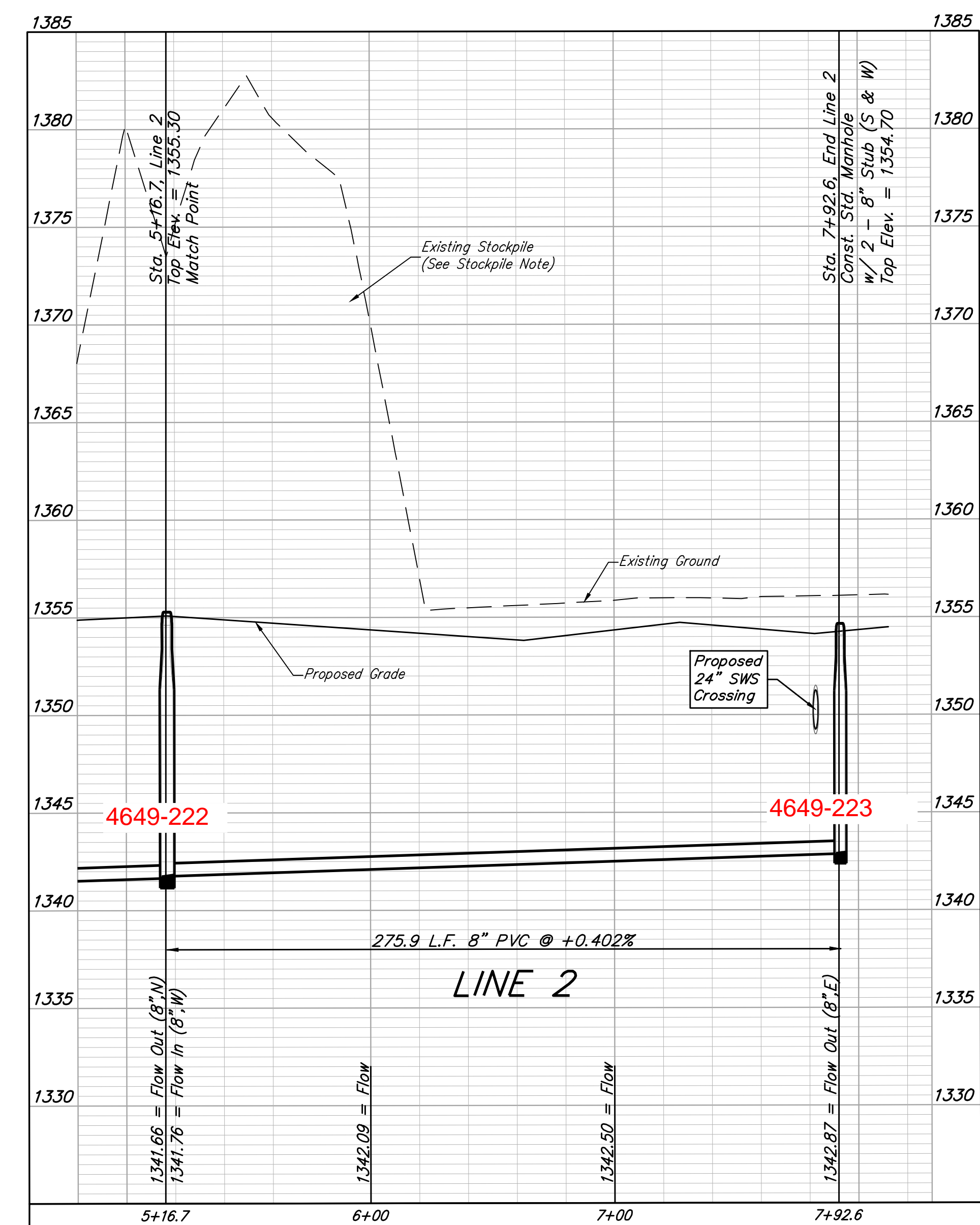
Note: All 8" Manhole Stubs Shall be  
15' Long at a Slope of +0.4%.  
To be bid as "E.A. 8", Manhole Stub".



SEWER SERVICE TABLE

Distance from Main to Riser (Lt./Rt.)	Distance from		NUMBER	TYPE	LOCATION				FOR INFORMATION ONLY	
	Upstream MH	Downstream MH			LOT NO.	BLOCK NO.	LINE NO.	STATION/DIRECTION	APPROXIMATE LENGTH 4" PIPE	
15' Rt.	239'	37'	14	8" X 4" Tee	4	A	2	5+53.70/Rt.	7.5	15' 6.8'
5' Lt.	225'	52'	15	8" X 4" Tee	1	A	2	5+68.20/Lt.	7.9	5' 7.1'
15' Rt.	175'	101'	16	8" X 4" Tee	3	A	2	6+17.60/Rt.	6.7	15' 5.1'
5' Lt.	153'	124'	17	8" X 4" Tee	2	A	2	6+40.10/Lt.	7.0	5' 8.2'
15' Rt.	115'	161'	18	8" X 4" Tee	2	A	2	6+77.60/Rt.	6.4	15' 6.1'
5' Lt.	93'	184'	19	8" X 4" Tee	3	A	2	7+00.10/Lt.	6.9	5.0
15' Rt.	55'	221'	20	8" X 4" Tee	1	A	2	7+37.60/Rt.	6.9	15.0
5' Lt.	33'	244'	21	8" X 4" Tee	4	A	2	7+60.10/Lt.	6.7	5.0

NOTE: Vertical Riser Pipe shall be extended to 2' minimum above ground water elevation and 4' maximum below proposed ground elevation.

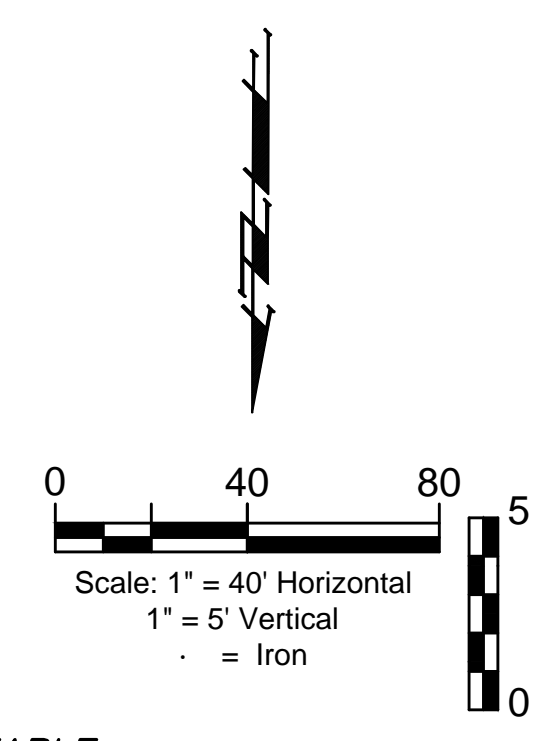
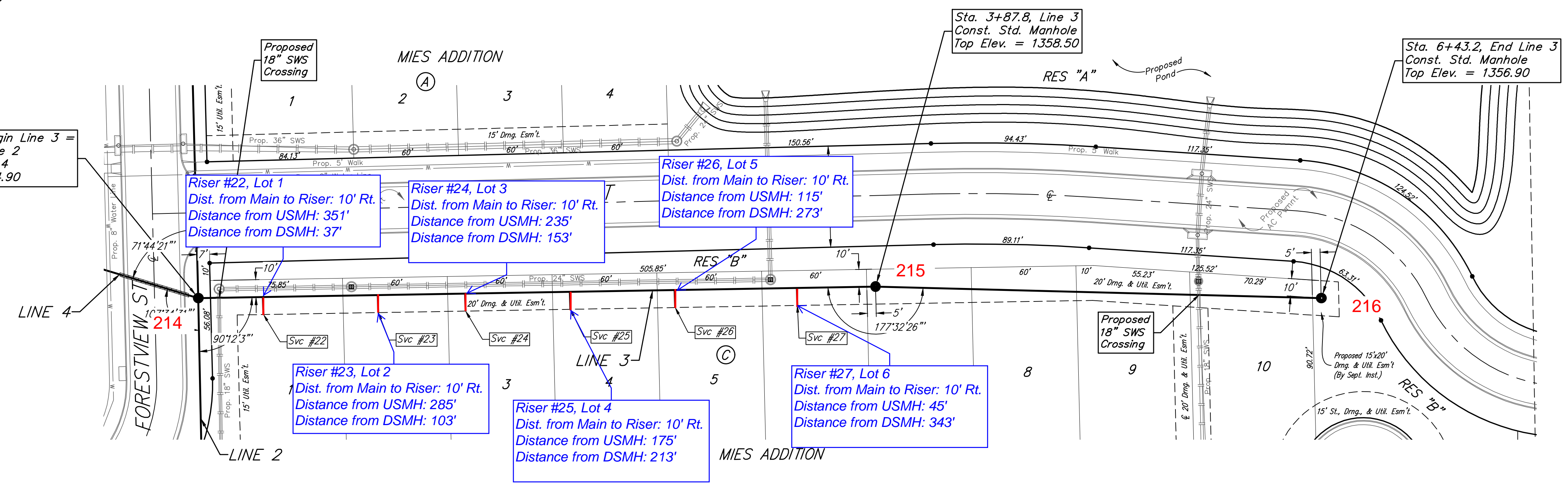


**BAUGHMAN COMPANY**  
315 Ellis St.  
Wichita, KS 67211  
316-262-7271  
BaugmanCo.com

MIES ADDITION  
**LINE 2**  
SANITARY SEWER IMPROVEMENTS  
PROJECT NUMBER: 468-2022-014512  
DESIGN: AEG DRAWN: CDW  
DATE: July 13, 2022  
SHEET 5 OF 19

BENCHMARK:  
CHISELED CROSS ON FACE OF WALK,  
578.1' N. OF THE MOST WESTERLY NW  
COR. LOT 1, BLOCK A, R. D. WOOD  
COMMERCIAL ADDITION, (SAID MOST  
WESTERLY NW COR. BEING A POINT ON  
THE E. R/W LINE OF N 135TH ST. W.), &  
44.1' E. OF THE W. LINE, SW 1/4, SEC. 12,  
TWP. 27-S, R-2-W.  
ELEV. = 1357.30 NAVD88

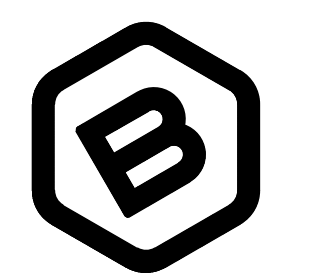
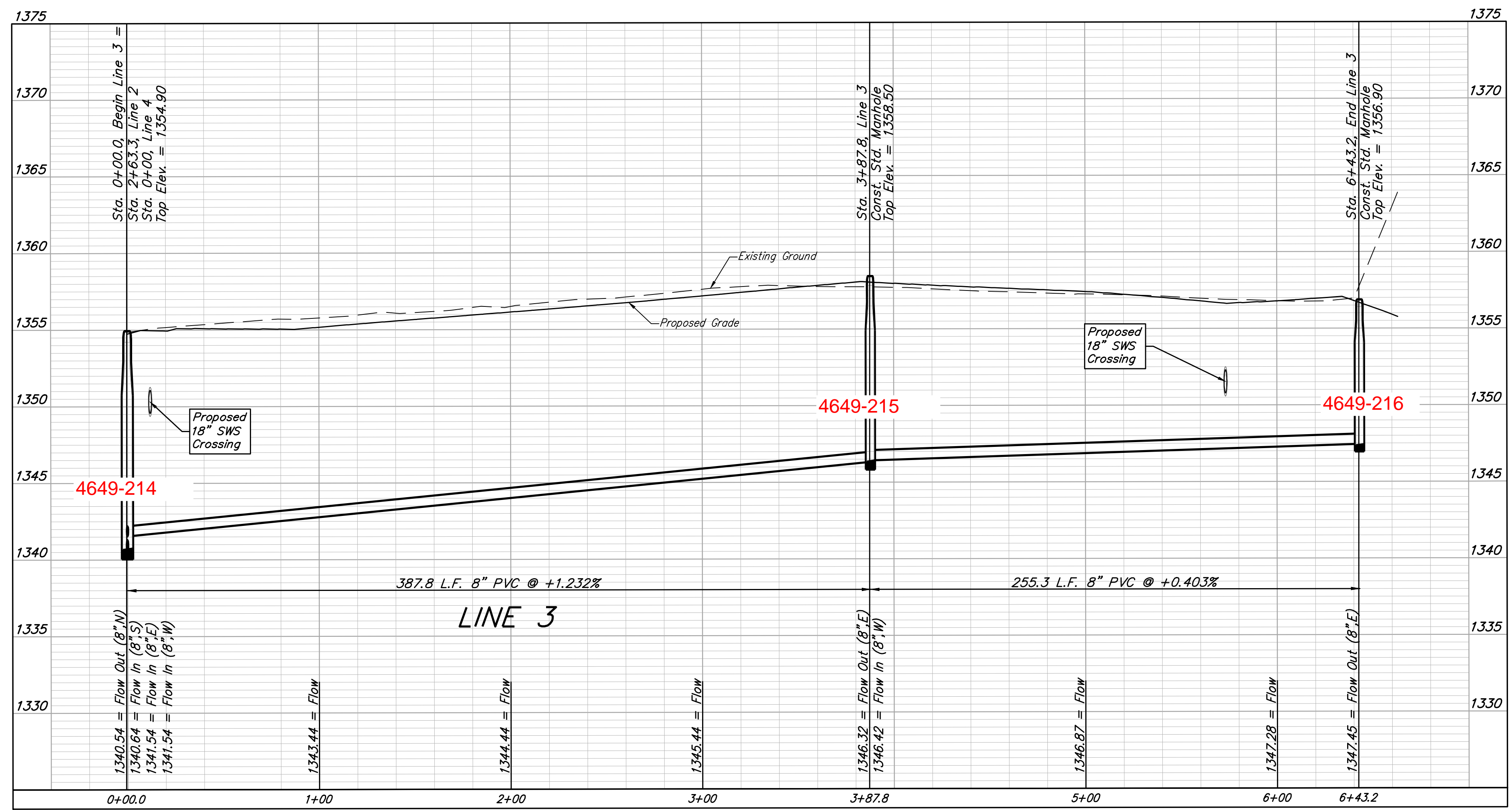
CHISELED CROSS ON NE COR. OF CATCH  
BASIN, 36.4' W. & 11.8' S. OF SW COR.,  
RESERVE "A", R. D. WOOD COMMERCIAL  
ADDITION.  
ELEV. = 1353.98 NAVD88



SEWER SERVICE TABLE

NUMBER	TYPE	LOCATION				FOR INFORMATION ONLY	
		LOT NO.	BLOCK NO.	LINE NO.	STATION/DIRECTION	APPROXIMATE LENGTH 4" PIPE	
						VERTICAL	HORIZONTAL
22	8" X 4" Tee	1	C	3	0+37.10/Rt.	7.6	10.0
23	8" X 4" Tee	2	C	3	1+02.90/Rt.	7.2	10.0
24	8" X 4" Tee	3	C	3	1+52.90/Rt.	7.1	10.0
25	8" X 4" Tee	4	C	3	2+12.90/Rt.	7.0	10.0
26	8" X 4" Tee	5	C	3	2+72.90/Rt.	7.0	10.0
27	8" X 4" Tee	6	C	3	3+42.90/Rt.	7.1	10.0

NOTE: Vertical Riser Pipe shall be extended to 2' minimum above ground water elevation and 4' maximum below proposed ground elevation.



**BAUGHMAN  
COMPANY**

315 Ellis St.  
Wichita, KS 67211  
316-262-7271  
BaughmanCo.com

MIES ADDITION

**LINE 3**

SANITARY SEWER  
IMPROVEMENTS

PROJECT NUMBER:  
468-2022-014512

DESIGN: AEG DRAWN: CDW

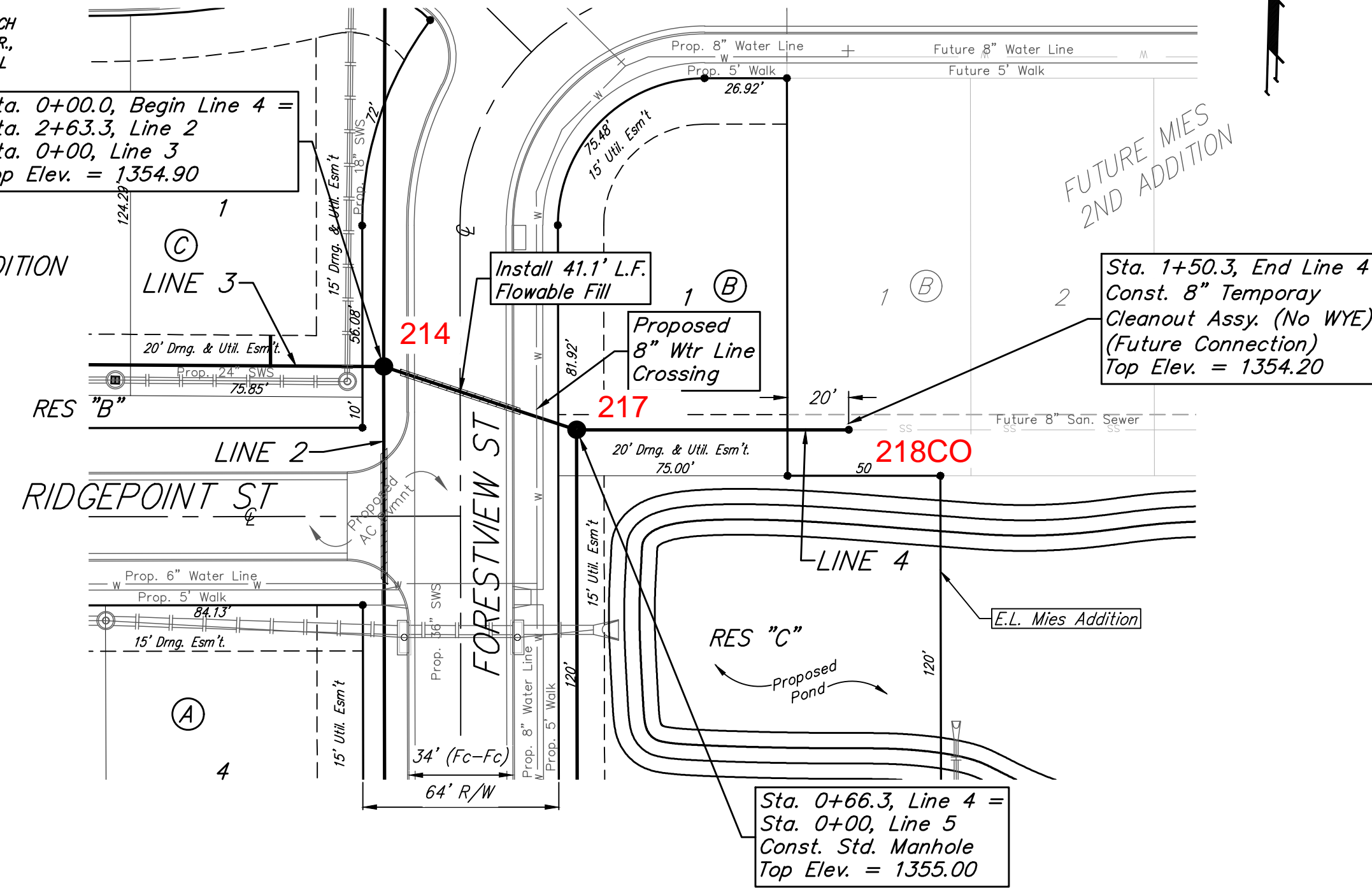
DATE: July 13, 2022

SHEET OF  
6 19

BENCHMARK:  
CHISELED CROSS ON FACE OF WALK,  
578.1' N. OF THE MOST WESTERLY NW  
COR. LOT 1, BLOCK A, R. D. WOOD  
COMMERCIAL ADDITION, (SAID MOST  
WESTERLY NW COR. BEING A POINT ON  
THE E. R/W LINE OF N 135TH ST. W.), &  
44.1' E. OF THE W. LINE, SW 1/4, SEC. 12,  
TWP. 27-S, R-2-W.  
ELEV. = 1357.30 NAVD88

CHISELED CROSS ON NE COR. OF CATCH  
BASIN, 36.4' W. & 11.8' S. OF SW COR.,  
RESERVE "A", R. D. WOOD COMMERCIAL  
ADDITION.  
ELEV. = 1353.98 NAVD88

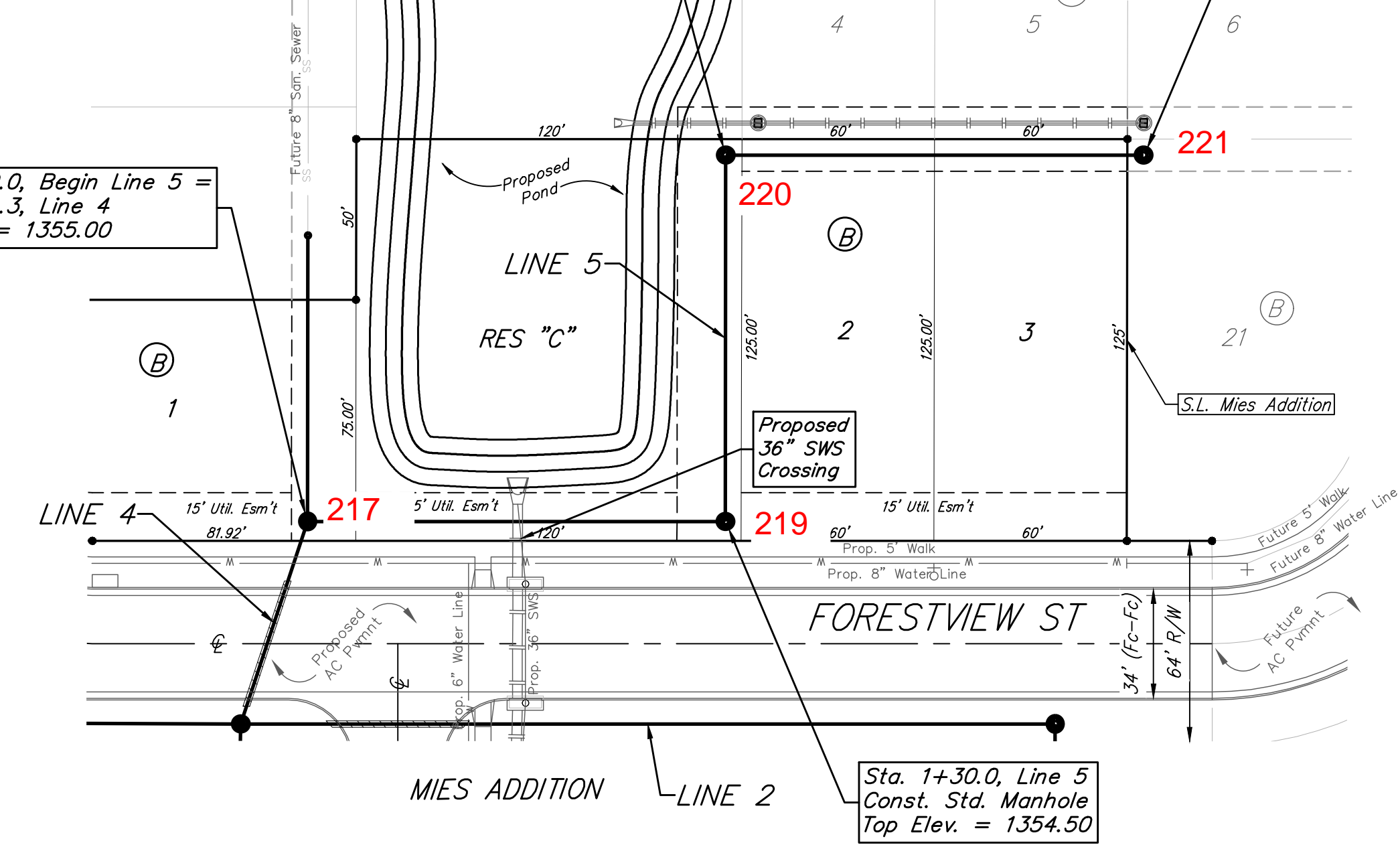
MIES ADDITION



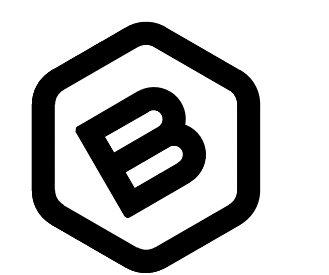
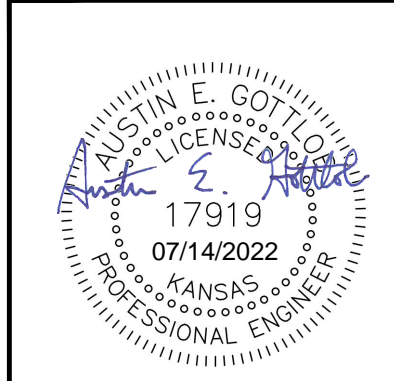
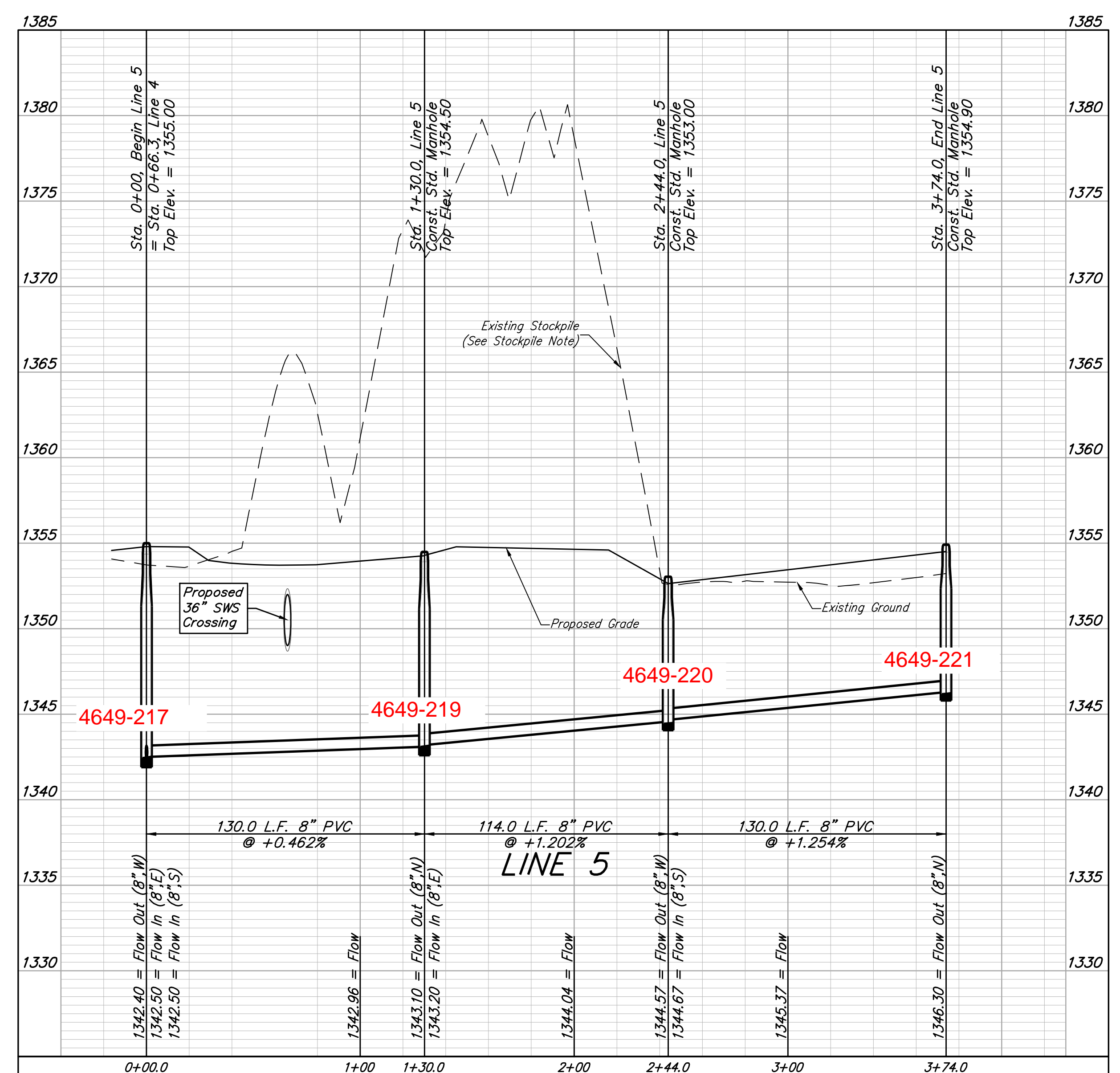
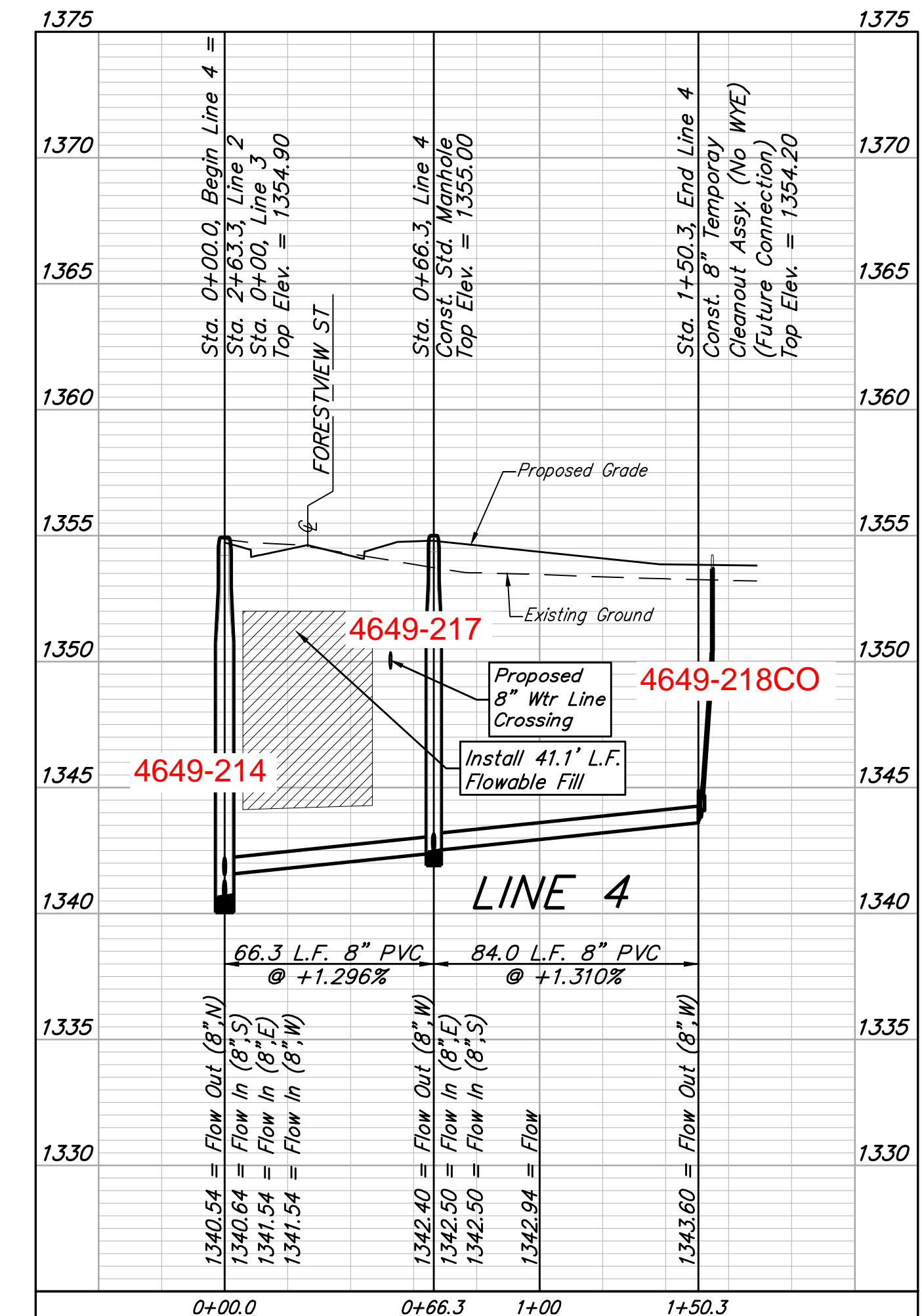
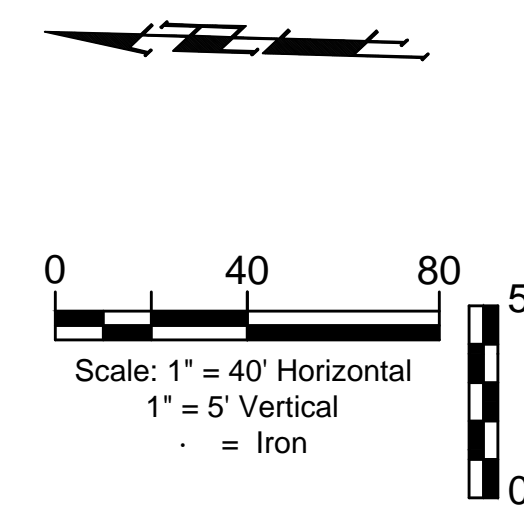
Sta. 0+00.0, Begin Line 5 =  
Sta. 0+66.3, Line 4  
Top Elev. = 1355.00

Sta. 2+44.0, Line 5  
Const. Std. Manhole  
Top Elev. = 1353.00

Sta. 3+74.0, End Line 5  
Const. Std. Manhole  
Top Elev. = 1354.90



Sta. 1+30.0, Line 5  
Const. Std. Manhole  
Top Elev. = 1354.50



**BAUGHMAN  
COMPANY**

315 Ellis St.  
Wichita, KS 67211  
316-262-7271  
BaughmanCo.com

MIES ADDITION

**LINES 4 & 5**

SANITARY SEWER  
IMPROVEMENTS

PROJECT NUMBER:  
468-2022-014512

DESIGN: AEG DRAWN: CDW

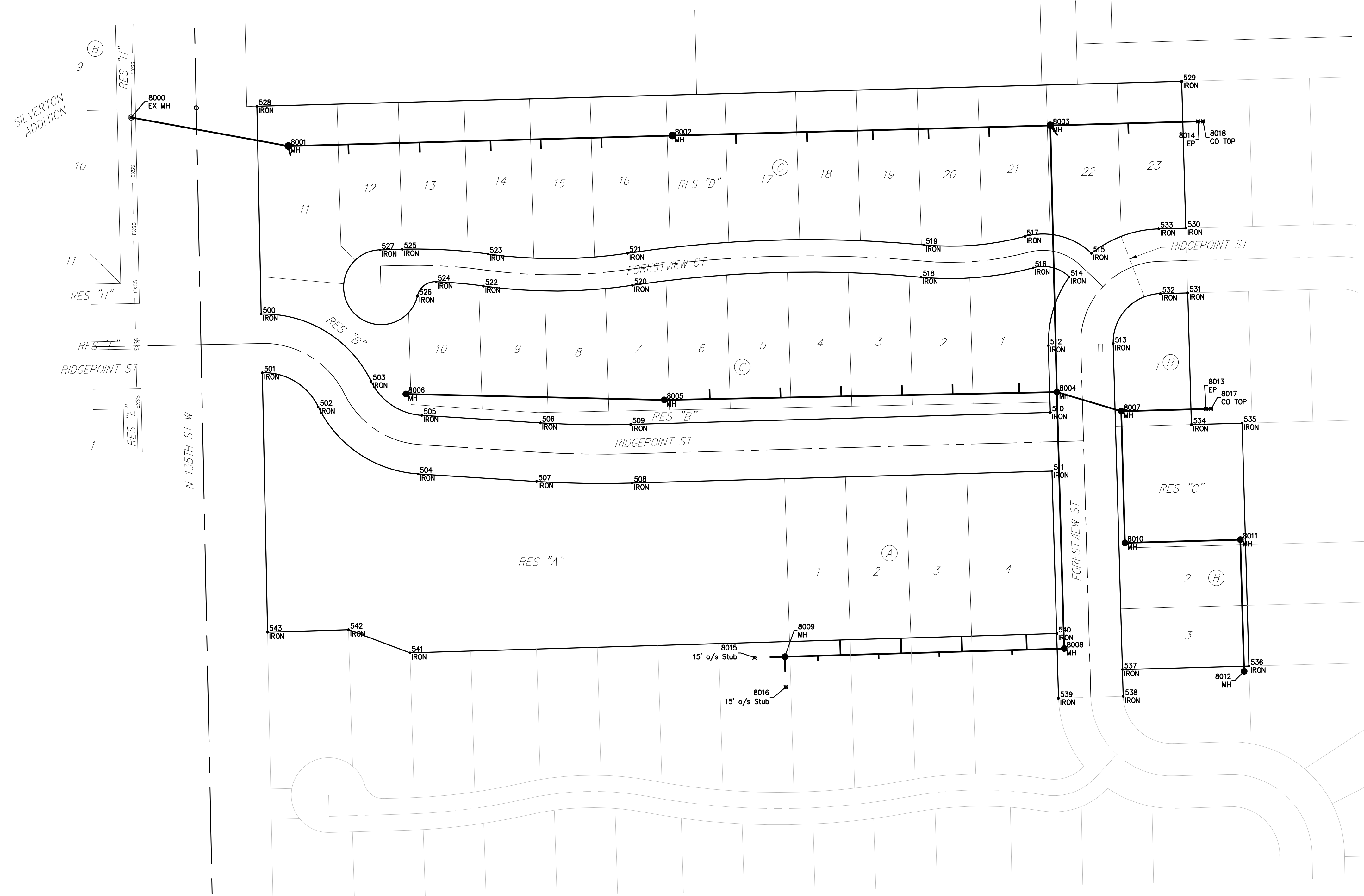
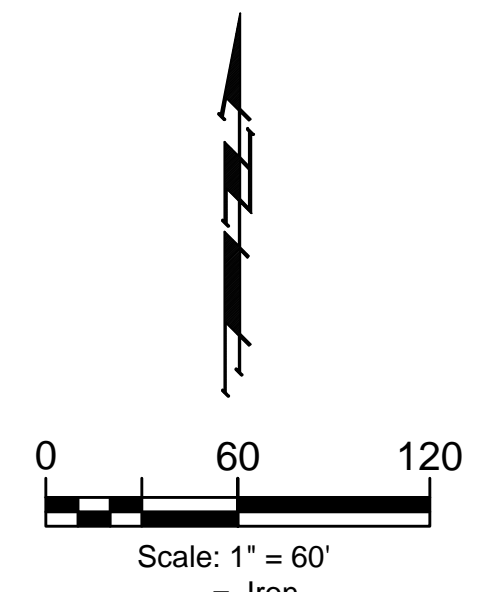
DATE: July 13, 2022

SHEET OF  
7 19

File: E:\Projects\Mies Addition\_Engineering\SS PLANS.dwg

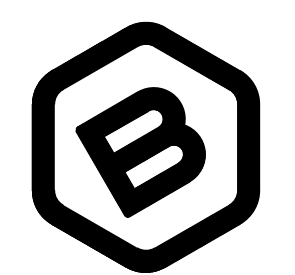
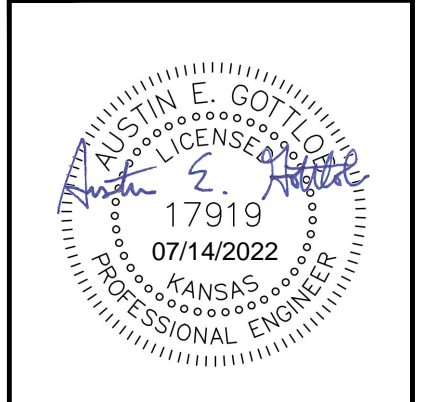
BENCHMARK:  
 CHISELED CROSS ON FACE OF WALK,  
 578.1' N. OF THE MOST WESTERLY NW  
 COR. LOT 1, BLOCK A, R. D. WOOD  
 COMMERCIAL ADDITION, (SAID MOST  
 WESTERLY NW COR. BEING A POINT ON  
 THE E. R/W LINE OF N 135TH ST. W.), &  
 44.1' E. OF THE W. LINE, SW1/4, SEC. 12  
 TWP. 27-S, R-2-W.  
 ELEV. = 1357.30 NAVD88

CHISELED CROSS ON NE COR. OF CATCH  
 BASIN, 36.4' W. & 11.8' S. OF SW COR.  
 RESERVE "A", R. D. WOOD COMMERCIAL  
 ADDITION.  
 ELEV. = 1353.98 NAVD88



Coordinates			
Point	Northing	Easting	Desc
501	1,695,303.91	1601958.18	IRON
502	1,695,270.15	1602013.35	IRON
503	1,695,295.51	1602065.52	IRON
504	1,695,203.97	1602112.03	IRON
505	1,695,261.86	1602115.69	IRON
506	1,695,254.45	1602232.80	IRON
507	1,695,196.57	1602229.14	IRON
508	1,695,194.93	1602323.53	IRON
509	1,695,252.91	1602321.87	IRON
510	1,695,264.77	1602736.39	IRON
511	1,695,206.80	1602738.05	IRON
512	1,695,330.83	1602734.50	IRON
513	1,695,332.66	1602798.47	IRON
514	1,695,398.59	1602754.93	IRON
515	1,695,421.84	1602776.92	IRON
516	1,695,407.59	1602719.48	IRON
517	1,695,438.51	1602711.23	IRON
518	1,695,398.28	1602608.79	IRON
519	1,695,430.15	1602611.76	IRON
520	1,695,390.32	1602323.67	IRON
521	1,695,421.97	1602318.93	IRON
522	1,695,389.49	1602176.56	IRON
523	1,695,421.19	1602180.94	IRON
524	1,695,393.66	1602129.67	IRON
525	1,695,425.87	1602096.36	IRON
526	1,695,379.81	1602111.43	IRON
527	1,695,425.28	1602074.42	IRON
528	1,695,567.05	1601952.88	IRON
529	1,695,591.66	1602866.09	IRON
530	1,695,446.72	1602870.24	IRON
531	1,695,382.74	1602872.07	IRON
532	1,695,382.02	1602845.16	IRON
533	1,695,445.99	1602843.44	IRON
534	1,695,252.80	1602875.79	IRON
535	1,695,254.14	1602925.77	IRON
536	1,695,014.24	1602932.64	IRON
537	1,695,010.87	1602807.68	IRON
538	1,694,984.38	1602808.44	IRON
539	1,694,982.47	1602744.47	IRON
540	1,695,046.38	1602742.64	IRON
541	1,695,027.32	1602103.99	IRON
542	1,695,050.12	1602043.28	IRON
543	1,695,047.74	1601963.34	IRON

Coordinates			
Point	Northing	Easting	Desc
8000	1,695,556.02	1601828.66	EX MH
8001	1,695,527.87	1601983.67	MH
8002	1,695,538.09	1602363.04	MH
8003	1,695,548.15	1602736.43	MH
8004	1,695,284.91	1602742.82	MH
8005	1,695,277.09	1602355.06	MH
8006	1,695,282.91	1602099.81	MH
8007	1,695,265.93	1602806.39	MH
8008	1,695,031.60	1602750.07	MH
8009	1,695,023.36	1602474.27	MH
8010	1,695,135.98	1602810.11	MH
8011	1,695,139.05	1602924.06	MH
8012	1,695,009.11	1602927.78	MH
8013	1,695,268.19	1602890.36	EP
8014	1,695,552.08	1602882.23	EP
8015	1,695,022.47	1602444.29	15' o/s Stub
8016	1,694,993.38	1602475.17	15' o/s Stub
8017	1,695,268.33	1602895.35	CO TOP
8018	1,695,552.21	1602887.23	CO TOP



**BAUGHMAN  
 COMPANY**  
 315 Ellis St.  
 Wichita, KS 67211  
 316-262-7271  
 BaughmanCo.com

MIES ADDITION  
**COORDINATES**  
 SANITARY SEWER  
 IMPROVEMENTS  
 PROJECT NUMBER:  
 468-2022-014512  
 DESIGN: AEG DRAWN: CDW  
 DATE: July 13, 2022  
 SHEET OF  
 18 19

File: E:\Projects\Mies Addition\_1\Engineering\SS PLANS.dwg