

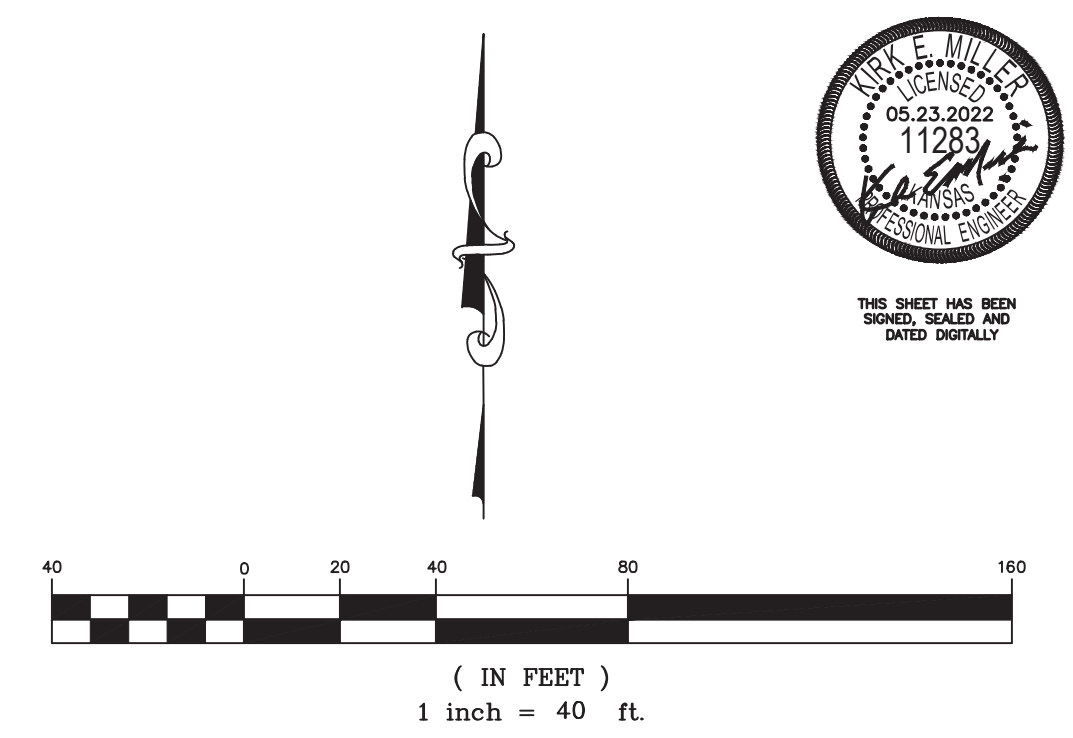
GENERAL NOTES:

- The Contractor shall comply with all applicable safety regulations. All construction shall be completed following current City Standard Specifications and Special Provisions.
- Contractor will be required to provide notice to utility companies a minimum of seventy-two (72) hours prior to any excavation, as follows:
 Kansas One-Call 687-2470
 The Contractor must notify the following in case of an emergency:
 AT&T 1-800-246-8464
 Black Hills Energy 1-800-694-8999
 City of Wichita Water & Sewer 1-316-219-8921
 City of Wichita Stormwater 1-316-268-4090
 City of Wichita Traffic 1-316-268-4034
 Cox Communications 1-888-249-3530
 Kansas Gas Service 1-888-482-4950
 Westar Energy 1-800-544-4857
- Utility service lines, poles, etc. are to be adjusted as necessary by others prior to construction unless the plans specifically call for their adjustment by the Contractor or unless the plans specifically identify a utility to be adjusted by its owner during construction. Existing utilities and their location, as shown on the plans, represent the best information obtainable for design. The Contractor will be required to work around existing utilities within the right-of-way which do not conflict with proposed construction.
- Rubble from the removal of miscellaneous structures and excess excavation which is to be wasted shall be disposed of on sites to be provided by the Contractor. These sites shall be approved by the Engineer as to suitability, appearance and site location. Locations, in the opinion of the Engineer, that will leave an unsightly appearance will not be approved. All disposal sites must be approved by the Kansas Department of Health and Environment. Material either stockpiled or disposed of in a flood plain will require a Kansas State Board of Agriculture permit. Any material dumped in waters of the United States or wetlands is subject to U.S. Corps. of Engineers permitting regulations. Any material buried or stockpiled beyond approved construction limits will require additional archaeological investigations unless buried in a previously approved borrow location.
- Trees and shrubs in public right-of-way which are in direct conflict with proposed new construction shall be removed by the Contractor with the City Engineer's approval. Trees and shrubs which are not in direct conflict with proposed new construction shall be saved and protected from damage.
- The Contractor shall give all property owners and/or tenants of developed property abutting the construction of this project a minimum of ten (10) days notice prior to start of construction.
- The Contractor shall be responsible for preserving property irons. The Contractor will be required to re-establish any property irons which are damaged or destroyed by his construction operations. Such irons shall be re-established by a licensed land surveyor in accordance with state laws.
- The Engineering Division shall field locate water valves one time during construction when requested by the Contractor. It shall be the Contractor's responsibility to preserve such field locations during the construction process. Water valves, valve boxes or fire hydrants damaged during construction shall be repaired by Contractor at his own expense. Valve boxes and water meters within the project limits shall be adjusted to match final grades by the contractor.
- The Contractor shall notify the inspecting engineer and Dawnita Reinhardt at 316-650-0740 with the City of Wichita with the anticipated construction start date and notify them of project completion. Staking and inspection for this project will be the responsibility of the Contractor.
- If traffic will be impacted by construction, a traffic control plan must be submitted and approved by the City Traffic Engineer, at traffic@wichita.gov before construction can begin. The Contractor shall be responsible for all traffic control measures to facilitate construction. All construction zone markings and signage shall conform to the latest version of the Manual on Uniform Traffic Control Devices (MUTCD) as published by the US Dept. of Transportation, Federal Highway Administration. All costs associated with construction markings and signage shall be the Contractor's responsibility.
- All elevations shown are NAVD 88.
- All areas disturbed during construction that will not be under proposed pavement shall be restored to match existing conditions.

- Any sidewalk, drive approach, curb, or street pavement removed to construct project must have a pavement cut permit and be replaced by the City contractor. Permits can be obtained by calling 316-268-4501 or 316-268-4480.
- All applicable fees (tap, equity, in lieu of & main benefit) must be paid before any connections can be made on this project. Quotes can be obtained on fees by calling 316-268-4555.
- City Maintenance of sanitary sewer mains ends at last structure within the easement or right-of-way.
- All stubs and capped pipes shall be located with green plastic tape in the same manner as risers.
- Connecting to Existing Manholes:
 Prior to laying sewer lines using existing stubs in existing manholes, the Contractor shall expose and verify the elevation, grade and alignment of existing stubs and notify the Engineer of any deviation from the plans. Where the stub is unusable due to elevation grade or alignment, the Contractor shall remove the stub and plug the hole, and reshape the existing manhole invert to provide smooth flow. Where connecting to an existing manhole that does not have an existing stub, the Contractor shall core cut into existing manhole wall to make connection using approved water stop gasket, and reshape the existing manhole invert to provide smooth flow. The cost to connecting to existing manholes is incidental to the project.
- Contractor shall limit the extent of trench open overnight and weekends to less than 50 feet.
- Contractor shall provide positive drainage away from all manhole covers.
- The Contractor shall prevent any construction debris from entering the existing sanitary sewer during construction.
- The Contractor shall be responsible for maintaining continuous flow of sewage through construction. Contractors proposed method for maintaining sewage flow shall be submitted and approved by the Sewer Maintenance Division (316-268-4073) prior to starting and by-passing of sewage flows.
- Any over excavation from manhole and pipe removal shall be backfilled with AB-3 compacted to 90-95% ASTM D698.
- The Contractor shall protect from damage and support existing utilities through construction as approved by the utility owner and the Engineer at the contractors expense.

Benchmark:

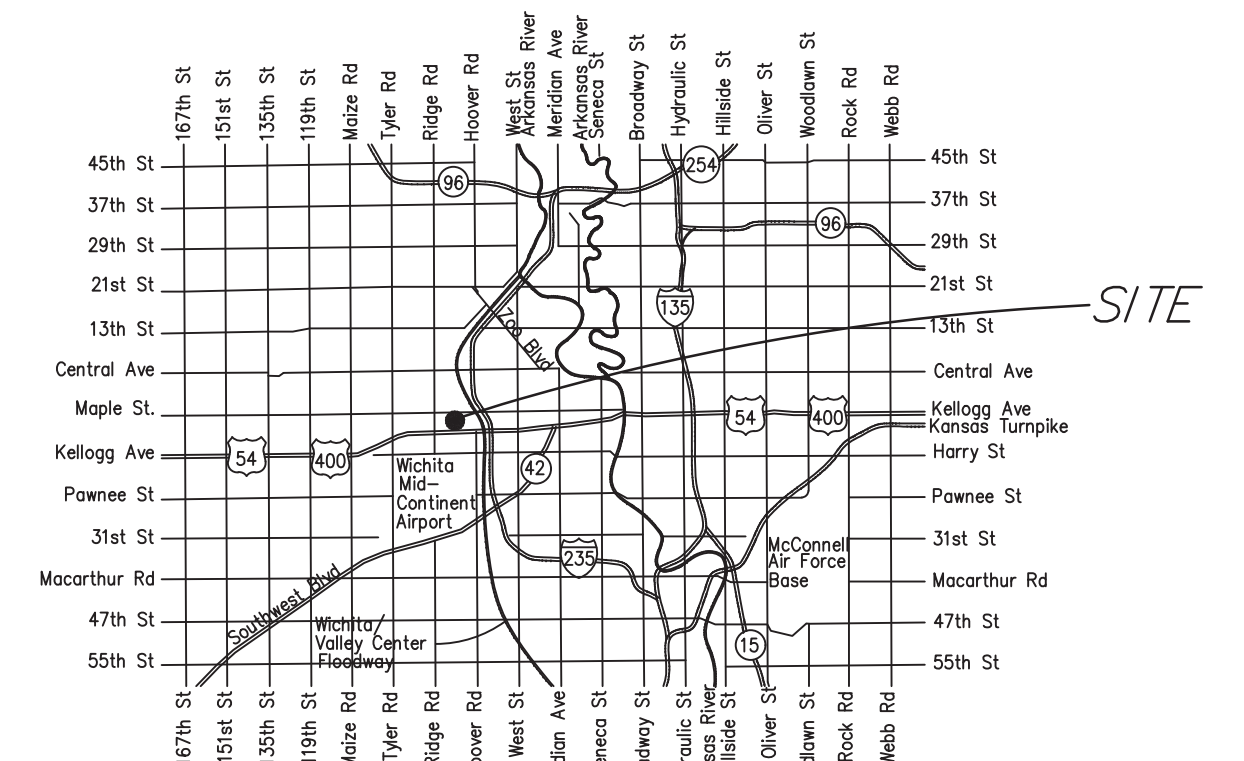
City Disc North side of Maple street, approximately 38 feet west of center line of Maple Lane and 42.20 feet due north of 1/4 section.
 Elevation=1310.58 NAVD 88
 Rebar with cap marking the northeast property corner of Lot 1 Ernest Jordan Addition
 Elevation=1305.21 NAVD 88



Sanitary Sewer to serve Vintage Court Duplexes Near Taft & Julia Street CITY OF WICHITA, KANSAS

Gary Janzen, P.E. City Engineer
 Project Number
 2022 - 009792 PPS
 Org Code: 53030982

5046A
 SWI-08

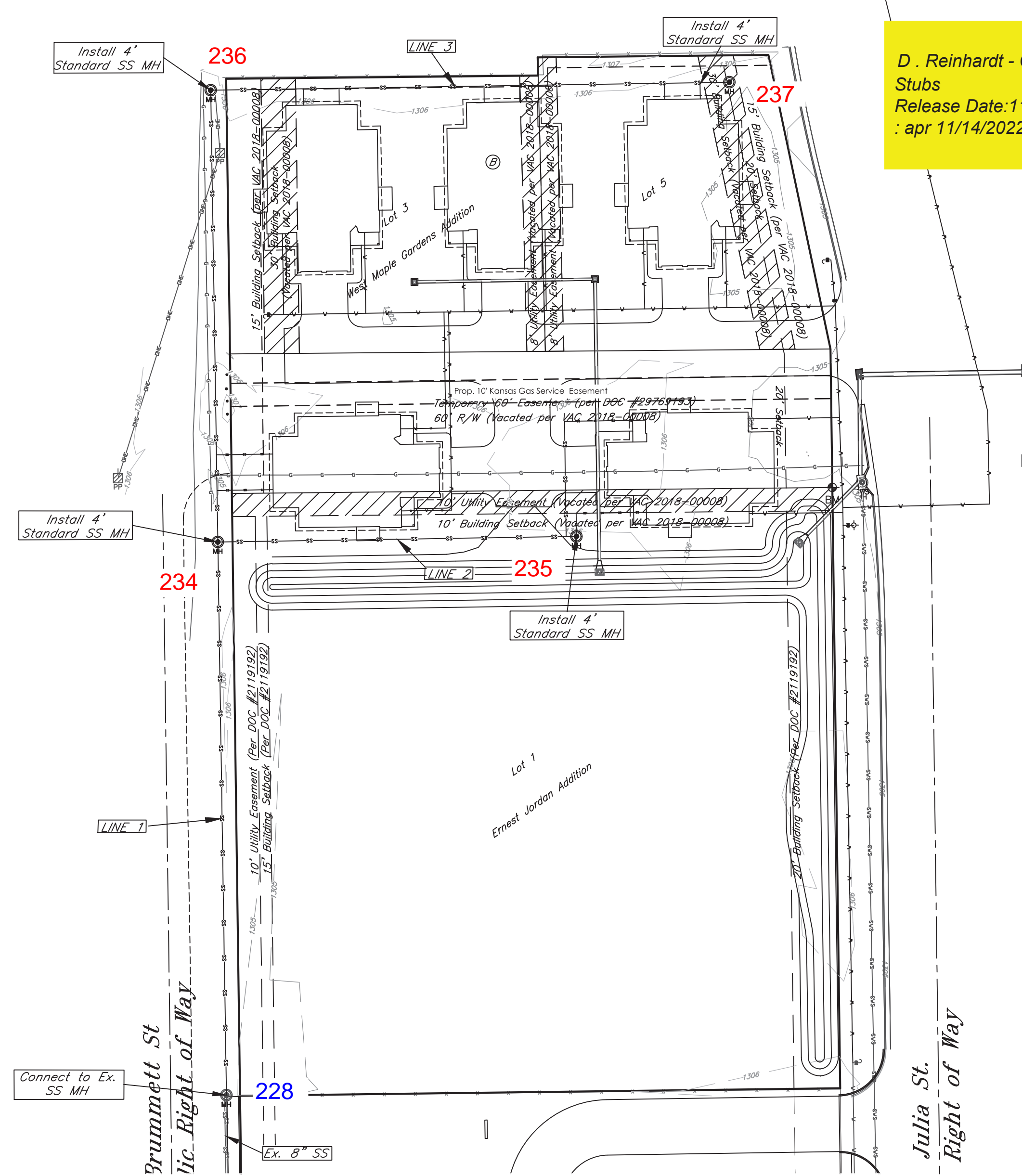


Vicinity Map

Index of Sheets:

- | | |
|---------|------------------------------|
| 1.0 | Cover Sheet |
| 2.1 | Standard Manhole Detail |
| 2.2 | MH Frame & Cover Detail |
| 3.0 | Plan and Profile - Line 1 |
| 3.1 | Plan and Profile - Line 2 |
| 3.2 | Plan and Profile - Line 3 |
| 4.0-4.5 | Erosion Control Plan/Details |
| 5.0-5.1 | Plat (For Reference Only) |

D. Reinhardt - City of Wichita, Inspector
 Stubs
 Release Date: 11/7/2022
 apr 11/14/2022



AS BUILTS

Contractor:
 Ewertz Excavation
 18 AUG 2022

Project Inspector:
 Eric Miner
KEMILLER
 ENGINEERING PA
 117 E. Lewis, Wichita, KS 67202 (316)264-0242

APPROVED AS NOTED
 BY WICHITA PUBLIC WORKS
 ENGINEERING DIVISION

Engineering approved by Shawn Mallies on this day
 the 26th of May, 2022

Utilities approved by Debra Ary on this day
 the 26th of May, 2022

NOTE TO CONTRACTORS

Inspection and testing for this project is to be provided by a Licensed Consulting Engineering Firm under contract with the Owner/Developer. Said inspection to be in accordance with the City of Wichita standard construction engineering practices and certified by a Licensed Professional Engineer in the state of Kansas. No work shall be performed by the Contractor without such inspection nor shall any work be commenced without written authorization by City Engineering. All Construction and Materials shall comply with the current City of Wichita Specifications and Standards and Special Provisions. (on file and available at Wichita.gov).

An approved copy of these plans signed by City staff are required on-site.

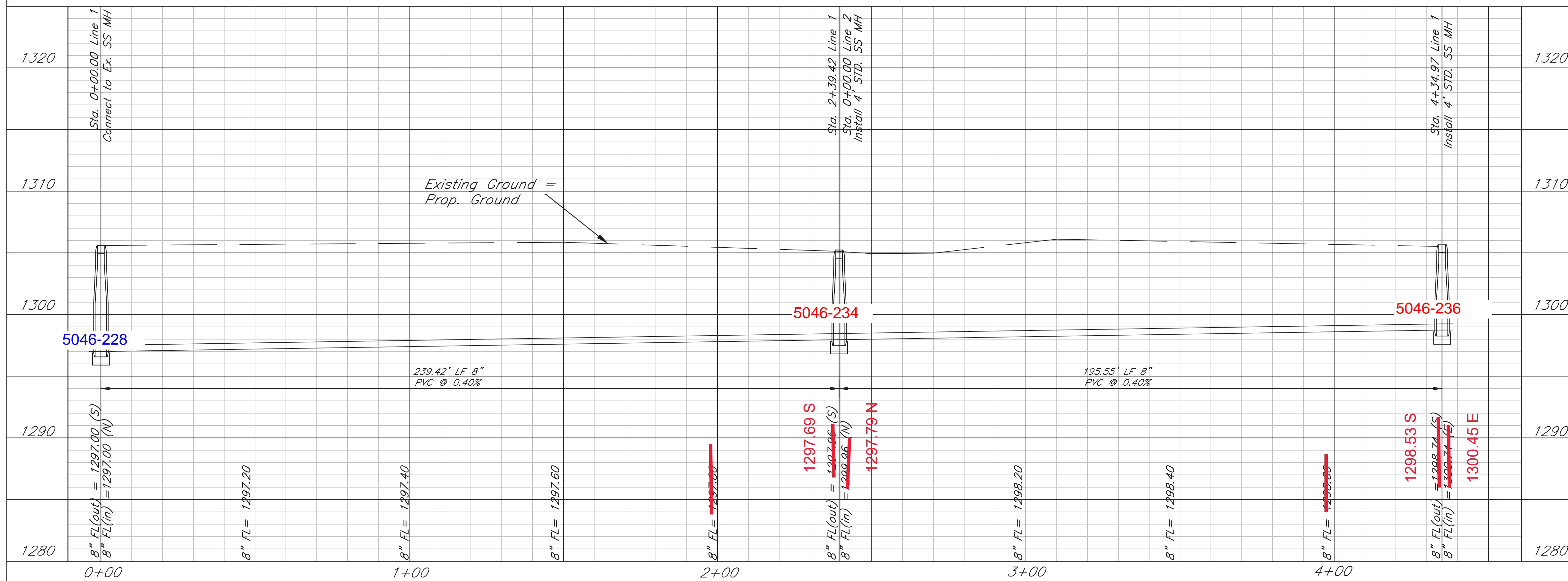
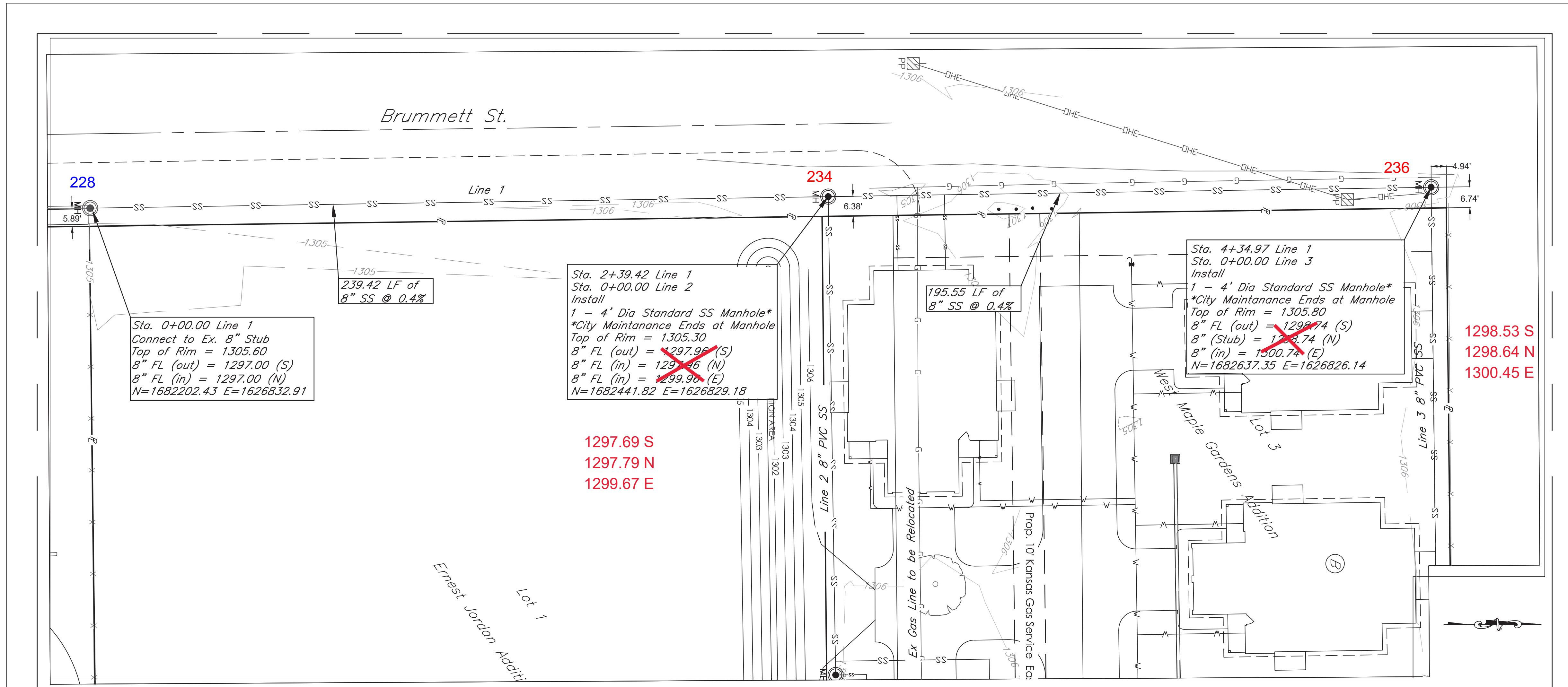
KEMILLER
 ENGINEERING PA
 117 E. Lewis, Wichita, KS 67202 (316)264-0242

May, 2022

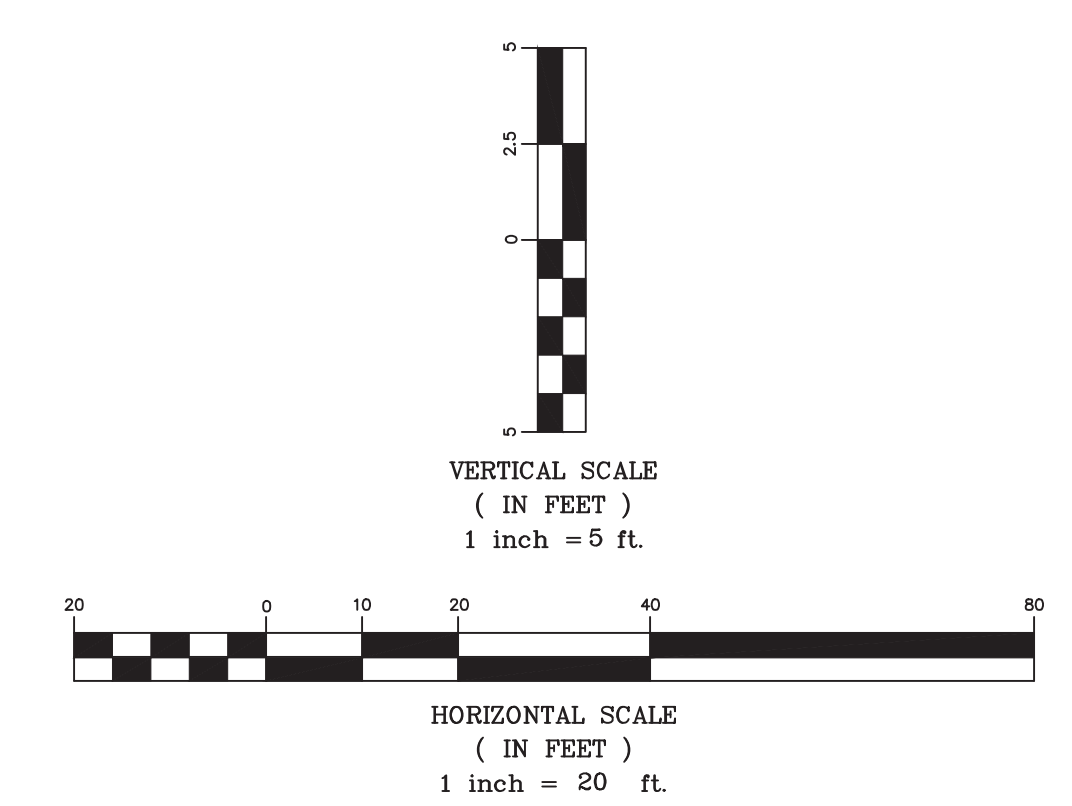
AS BUILTS



KEMILLER
ENGINEERING PA
117 E. Lewis,
Wichita, KS 67202 (316)264-0242



THIS SHEET HAS BEEN SIGNED, SEALED AND DATED DIGITALLY

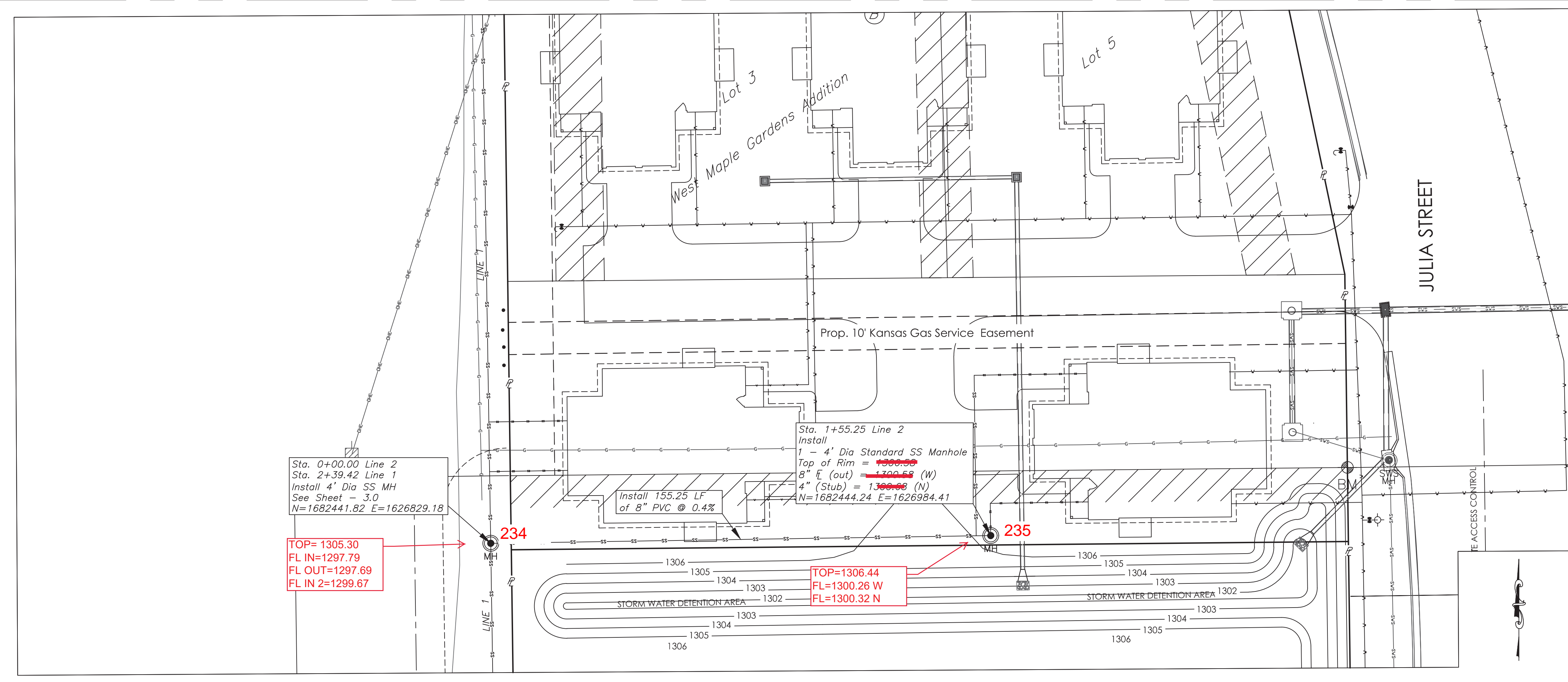


Vintage Court Duplexes
Plan & Profile Line 1
Wichita, Kansas

PROJECT NUMBER
PPS-2022-009792

KEMILLER ENGINEERING PA 117 E. Lewis, Wichita, KS 67202 (316)264-0242	KEM NO. 21167	FILE	DATE 03/2022	3.0
	DESIGN PG	DRAWN KJ	REVISED 05/13/2022	

AS BUILTS



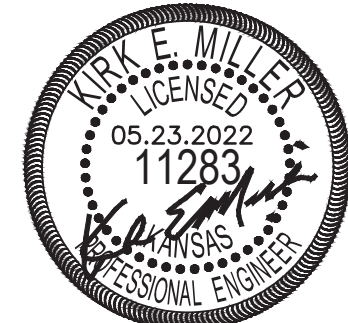
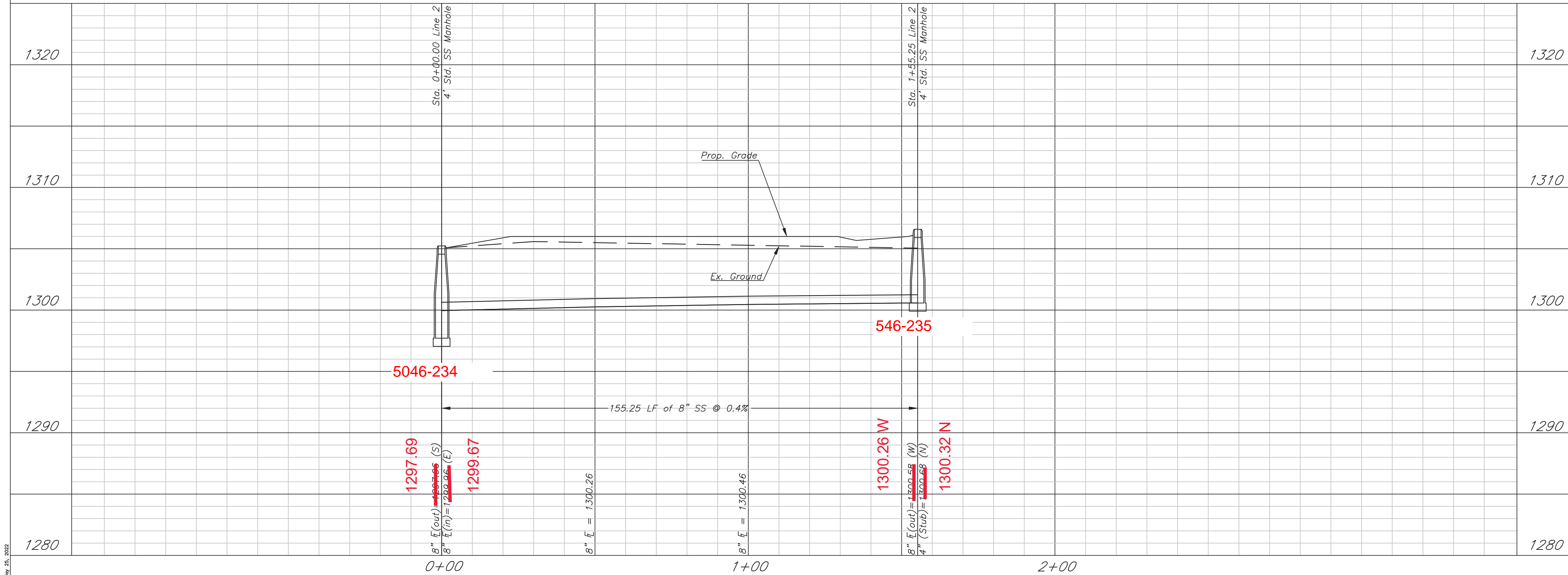
Sta. 0+00.00 Line 2
Sta. 2+39.42 Line 1
Install 4' Dia SS MH
See Sheet - 3.0
N=1682441.82 E=1626829.18

TOP=1305.30
FL IN=1297.79
FL OUT=1297.69
FL IN 2=1299.67

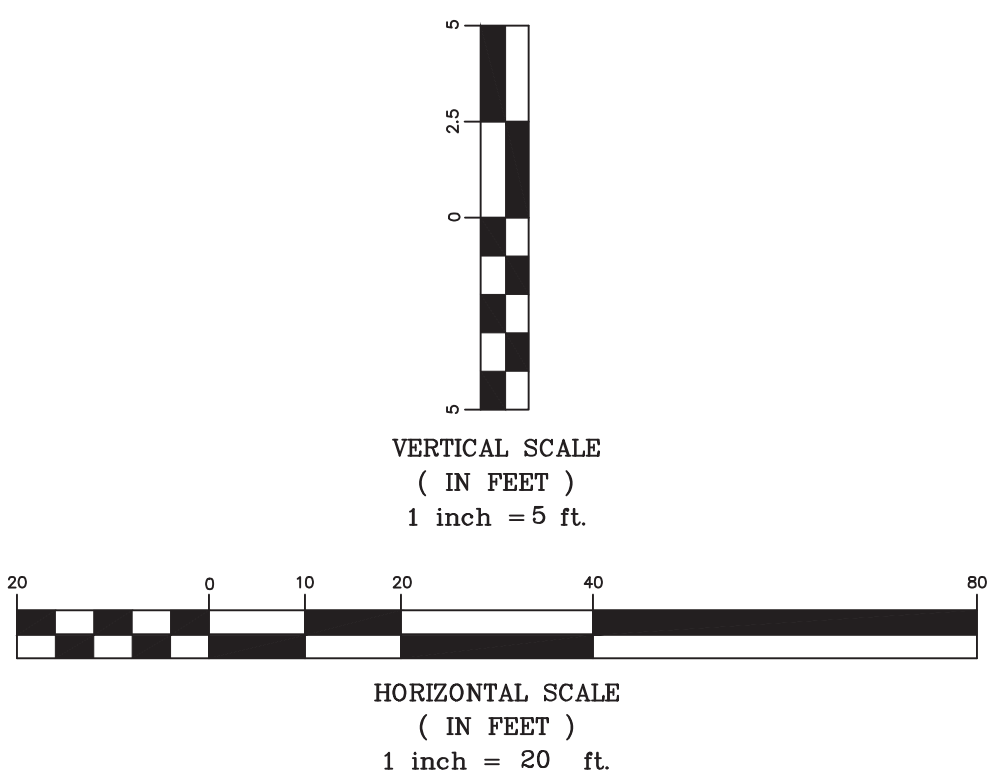
Sta. 1+55.25 Line 2
Install
1 - 4' Dia Standard SS Manhole
Top of Rim = ~~1306.44~~
8" E (out) = ~~1300.26~~ (W)
4" (Stub) = ~~1300.32~~ (N)
N=1682444.24 E=1626984.41

TOP=1306.44
FL=1300.26 W
FL=1300.32 N

Line 2



THIS SHEET HAS BEEN SIGNED, SEALED AND DATED DIGITALLY



Vintage Court Duplexes
Plan & Profile Line 2
Wichita, Kansas

	PROJECT NUMBER PPS-2022-009792			SHEET 3.1
	KEM NO. 21167	FILE	DATE 05/17/2022	
DESIGN PG	DRAWN KJ	REVISED 05/23/2022		

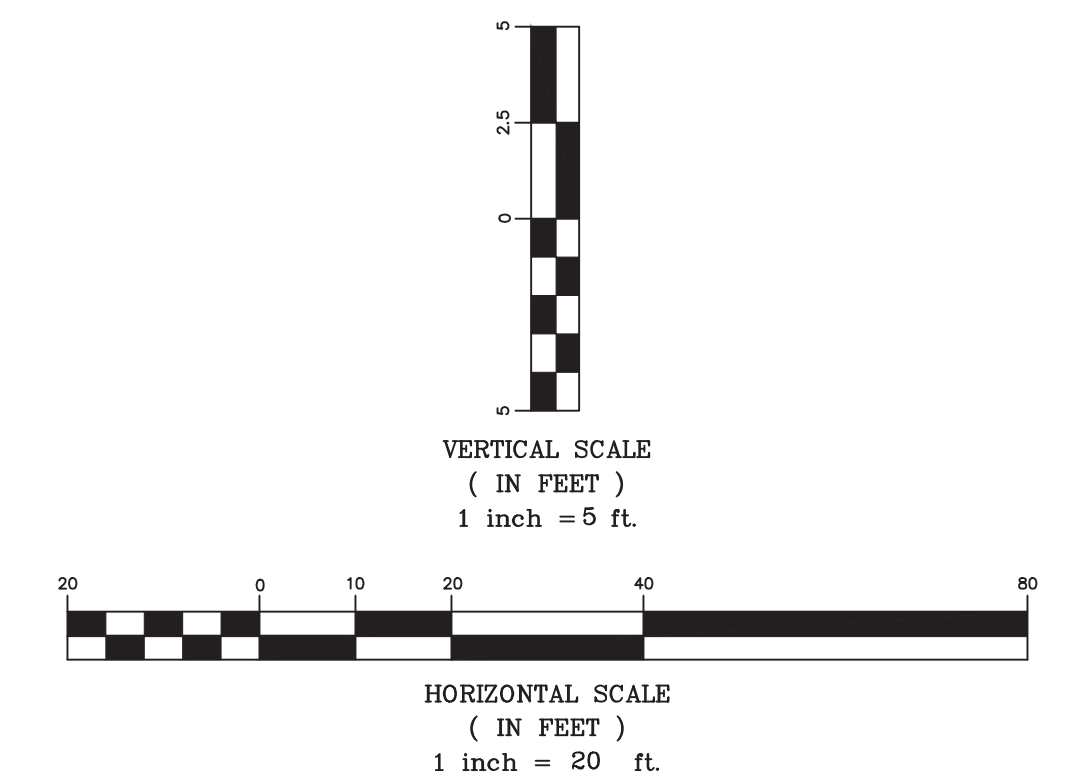
May 23, 2022

AS BUILTS

KEMILLER ENGINEERING PA
 117 E. Lewis,
 Wichita, KS 67202 (316)264-0242

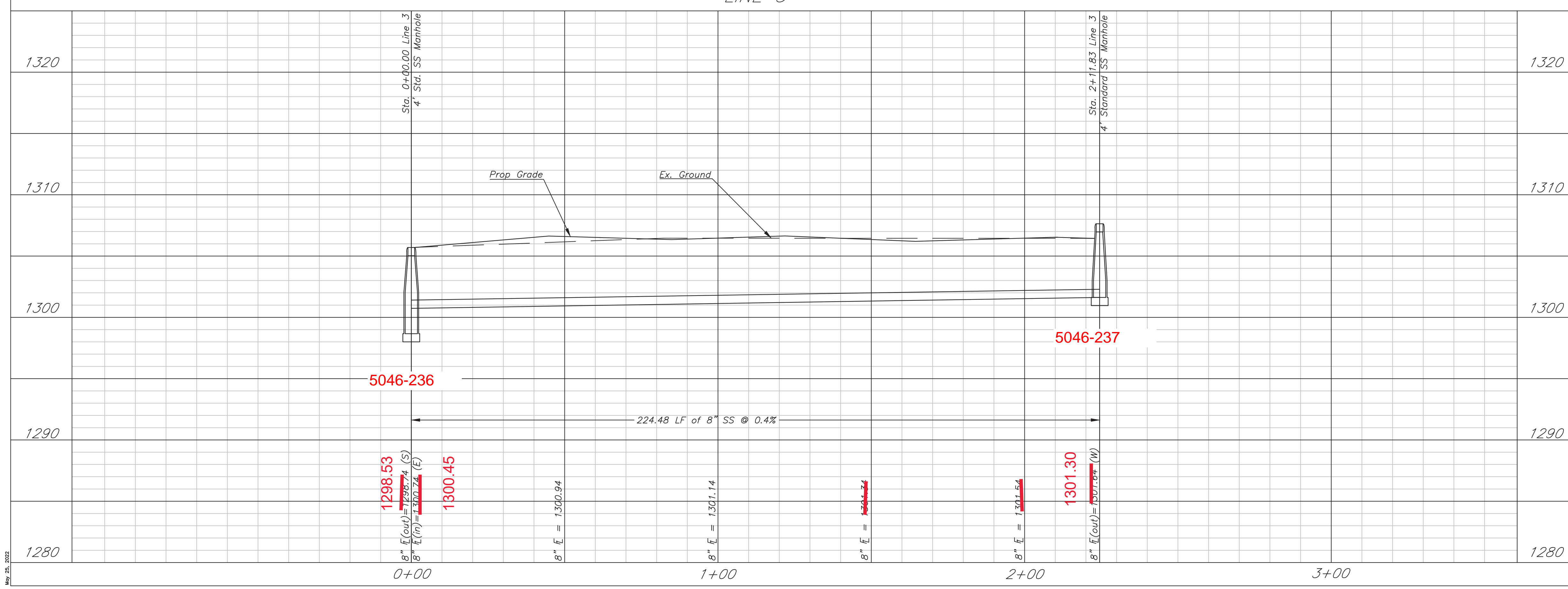
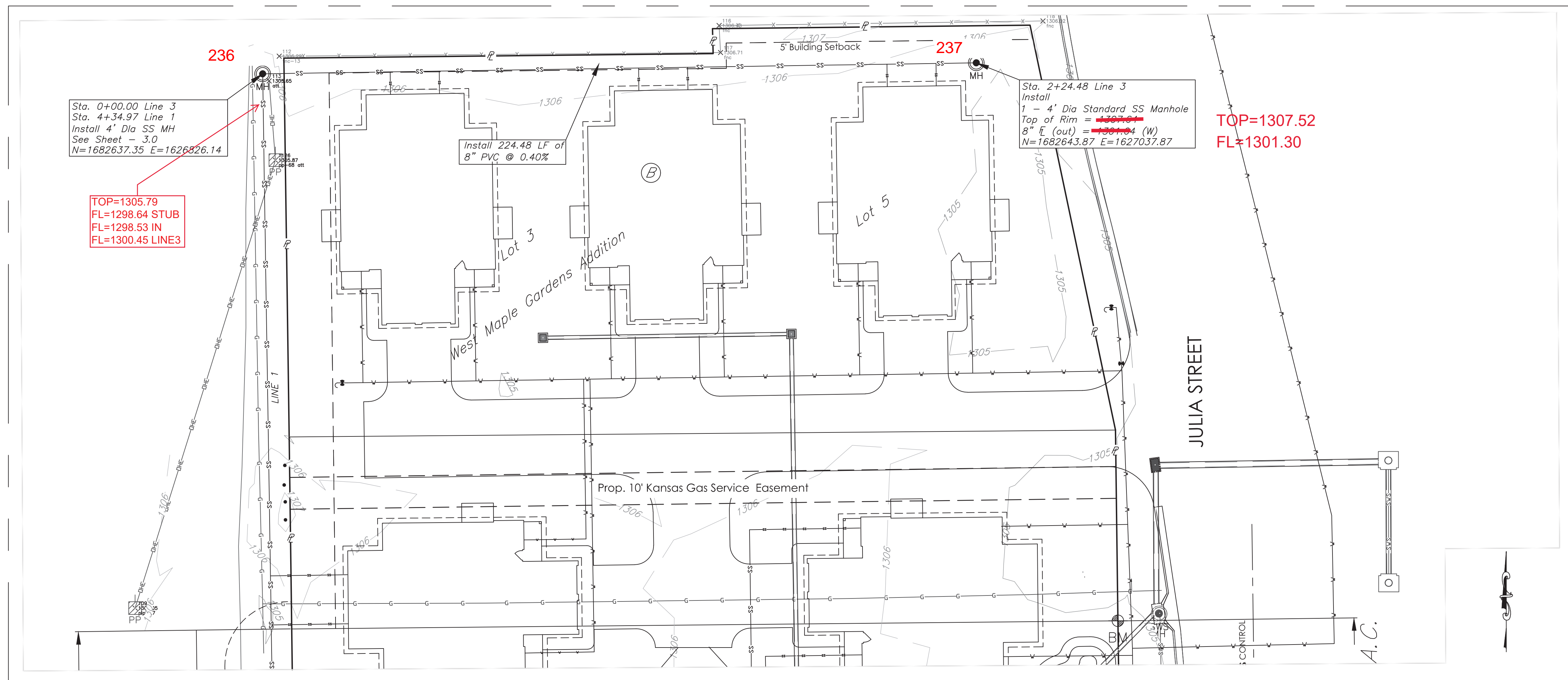


THIS SHEET HAS BEEN
 SIGNED, SEALED AND
 DATED DIGITALLY



Vintage Court Duplexes Plan & Profile Line 3 Wichita, Kansas

KEMILLER ENGINEERING PA 117 E. Lewis, Wichita, KS 67202 (316)264-0242	PROJECT NUMBER PPS-2022-009792		SHEET 3.2
	KEM NO. 21167	FILE 05/17/2022	
DESIGN PG	DRAWN KJ	REVISED 5/23/2022	



May 23, 2022