

# GENERAL NOTES:

1. THE CONTRACTOR SHALL COMPLY WITH ALL APPLICABLE SAFETY REGULATIONS. ALL CONSTRUCTION SHALL BE COMPLETED FOLLOWING CURRENT CITY STANDARD SPECIFICATIONS AND SPECIAL PROVISIONS.
2. THE CONTRACTOR WILL BE REQUIRED TO PROVIDE NOTICE TO UTILITY COMPANIES A MINIMUM OF SEVENTY-TWO (72) HOURS PRIOR TO ANY EXCAVATION, AS FOLLOWS:

KANSAS ONE-CALL 687-2470

THE CONTRACTOR MUST NOTIFY THE FOLLOWING IN CASE OF AN EMERGENCY:

AT&T	1-800-246-8464
BLACK HILLS ENERGY	1-800-694-8989
CITY OF WICHITA WATER & SEWER	1-316-219-8921
CITY OF WICHITA STORMWATER	1-316-268-4090
CITY OF WICHITA TRAFFIC	1-316-268-4034
COX COMMUNICATIONS	1-888-249-3530
KANSAS GAS SERVICE	1-888-482-4950
WESTAR ENERGY	1-800-544-4857

3. UTILITY SERVICE LINES, POLES, ETC. ARE TO BE ADJUSTED AS NECESSARY BY OTHERS PRIOR TO CONSTRUCTION UNLESS THE PLANS SPECIFICALLY CALL FOR THEIR ADJUSTMENT BY THE CONTRACTOR OR UNLESS THE PLANS SPECIFICALLY IDENTIFY A UTILITY TO BE ADJUSTED BY ITS OWNER DURING CONSTRUCTION. EXISTING UTILITIES AND THEIR LOCATION, AS SHOWN ON THE PLANS, REPRESENT THE BEST INFORMATION OBTAINABLE FOR DESIGN. THE CONTRACTOR WILL BE REQUIRED TO WORK AROUND EXISTING UTILITIES WITHIN THE RIGHT-OF-WAY WHICH DO NOT CONFLICT WITH PROPOSED CONSTRUCTION.

4. RUBBLE FROM THE REMOVAL OF MISCELLANEOUS STRUCTURES AND EXCESS EXCAVATION WHICH IS TO BE WASTED SHALL BE DISPOSED OF ON SITES TO BE PROVIDED BY THE CONTRACTOR. THESE SITES SHALL BE APPROVED BY THE ENGINEER AS TO SUITABILITY, APPEARANCE AND SITE LOCATION. LOCATIONS, IN THE OPINION OF THE ENGINEER, THAT WILL LEAVE AN UNSIGHTLY APPEARANCE WILL NOT BE APPROVED. ALL DISPOSAL SITES MUST BE APPROVED BY THE KANSAS DEPARTMENT OF HEALTH AND ENVIRONMENT. MATERIAL EITHER STOCKPILED OR DISPOSED OF IN A FLOOD PLAIN WILL REQUIRE A KANSAS STATE BOARD OF AGRICULTURE PERMIT. ANY MATERIAL DUMPED IN WATERS OF THE UNITED STATES OR WETLANDS IS SUBJECT TO U.S. CORPS. OF ENGINEERS PERMITTING REGULATIONS. ANY MATERIAL BURIED OR STOCKPILED BEYOND APPROVED CONSTRUCTION LIMITS WILL REQUIRE ADDITIONAL ARCHAEOLOGICAL INVESTIGATIONS UNLESS BURIED IN A PREVIOUSLY APPROVED BORROW LOCATION.

5. TREES AND SHRUBS IN PUBLIC RIGHT-OF-WAY WHICH ARE IN DIRECT CONFLICT WITH PROPOSED NEW CONSTRUCTION SHALL BE REMOVED BY THE CONTRACTOR WITH THE ENGINEER'S APPROVAL. TREES AND SHRUBS WHICH ARE NOT IN DIRECT CONFLICT WITH PROPOSED NEW CONSTRUCTION SHALL BE SAVED AND PROTECTED FROM DAMAGE.

6. THE CONTRACTOR SHALL GIVE ALL PROPERTY OWNERS AND/OR TENANTS OF DEVELOPED PROPERTY ADJUTING THE CONSTRUCTION OF THIS PROJECT A MINIMUM OF TEN (10) DAYS NOTICE PRIOR TO START OF CONSTRUCTION.

7. THE CONTRACTOR SHALL BE RESPONSIBLE FOR PRESERVING PROPERTY IRONS. THE CONTRACTOR WILL BE REQUIRED TO RE-ESTABLISH ANY PROPERTY IRONS WHICH ARE DAMAGED OR DESTROYED BY HIS CONSTRUCTION OPERATIONS. SUCH IRONS SHALL BE RE-ESTABLISHED BY A LICENSED LAND SURVEYOR IN ACCORDANCE WITH STATE LAWS.

8. THE ENGINEERING DIVISION SHALL FIELD LOCATE WATER VALVES ONE TIME DURING CONSTRUCTION WHEN REQUESTED BY THE CONTRACTOR. IT SHALL BE THE CONTRACTOR'S RESPONSIBILITY TO PRESERVE SUCH FIELD LOCATIONS DURING THE CONSTRUCTION PROCESS. WATER VALVES, VALVE BOXES OR FIRE HYDRANTS DAMAGED DURING CONSTRUCTION SHALL BE REPAIRED BY CONTRACTOR AT HIS OWN EXPENSE. VALVE BOXES AND WATER METERS WITHIN THE PROJECT LIMITS SHALL BE ADJUSTED TO MATCH FINAL GRADES BY THE CONTRACTOR.

9. THE CONTRACTOR SHALL NOTIFY THE CONSULTANT ENGINEER AND TOM MASON AT 316-268-4574 WITH THE CITY OF WICHITA WITH THE ANTICIPATED CONSTRUCTION START DATE AND NOTIFY THEM OF PROJECT COMPLETION. STAKING AND INSPECTION WILL BE CONTRACTED WITH THE CITY OF WICHITA.

10. IF TRAFFIC WILL BE IMPACTED BY CONSTRUCTION, A TRAFFIC CONTROL PLAN MUST BE SUBMITTED AND APPROVED BY THE CITY TRAFFIC ENGINEER, PAUL GUNZELMAN AT [TRAFFIC@WICHITA.GOV](mailto:TRAFFIC@WICHITA.GOV) BEFORE CONSTRUCTION CAN BEGIN. THE CONTRACTOR SHALL BE RESPONSIBLE FOR ALL TRAFFIC CONTROL MEASURES TO FACILITATE CONSTRUCTION. ALL CONSTRUCTION ZONE MARKINGS AND SIGNAGE SHALL CONFORM TO THE LATEST VERSION OF THE MANUAL ON UNIFORM TRAFFIC CONTROL DEVICES (MUTCD) AS PUBLISHED BY THE US DEPT. OF TRANSPORTATION, FEDERAL HIGHWAY ADMINISTRATION. ALL COSTS ASSOCIATED WITH CONSTRUCTION MARKINGS AND SIGNAGE SHALL BE THE CONTRACTORS RESPONSIBILITY.

11. ALL ELEVATIONS SHOWN ARE NAVD 88.
12. ALL AREAS DISTURBED DURING CONSTRUCTION THAT WILL NOT BE UNDER PROPOSED PAVEMENT SHALL BE RESTORED TO MATCH EXISTING CONDITIONS.
13. CITY MAINTENANCE OF SANITARY SEWER MAINS ENDS AT LAST STRUCTURE WITHIN THE EASEMENT OR RIGHT-OF-WAY.

14. ALL STUBS AND CAPPED PIPES SHALL BE LOCATED WITH GREEN PLASTIC TAPE IN THE SAME MANNER AS RISERS.
15. CONNECTING TO EXISTING MANHOLES: PRIOR TO LAYING SEWER LINES USING EXISTING STUBS IN EXISTING MANHOLES, THE CONTRACTOR SHALL EXPOSE AND VERIFY THE ELEVATION, GRADE AND ALIGNMENT OF EXISTING STUBS AND NOTIFY THE ENGINEER OF ANY DEVIATION FROM THE PLANS. WHERE THE STUB IS UNUSABLE DUE TO ELEVATION GRADE OR ALIGNMENT, THE CONTRACTOR SHALL REMOVE THE STUB AND PLUG THE HOLE, AND RESHAPE THE EXISTING MANHOLE INVERT TO PROVIDE SMOOTH FLOW. WHERE CONNECTION TO AN EXISTING MANHOLE THAT DOES NOT HAVE AN EXISTING STUB, THE CONTRACTOR SHALL CORE CUT INTO EXISTING MANHOLE WALL TO MAKE CONNECTION USING APPROVED WATER STOP GASKET, AND RESHAPE THE EXISTING MANHOLE INVERT TO PROVIDE SMOOTH FLOW. THE COST TO CONNECTING TO EXISTING MANHOLES IS INCIDENTAL TO THE PROJECT.

16. THE CONTRACTOR SHALL LIMIT THE EXTENT OF TRENCH OPEN OVERNIGHT AND WEEKENDS TO LESS THAN 50 FEET.
17. THE CONTRACTOR SHALL PROVIDE POSITIVE DRAINAGE AWAY FROM ALL MANHOLE COVERS.

18. THE CONTRACTOR SHALL PREVENT ANY CONSTRUCTION DEBRIS FROM ENTERING THE EXISTING SANITARY SEWER DURING CONSTRUCTION.
19. THE CONTRACTOR SHALL BE RESPONSIBLE FOR MAINTAINING CONTINUOUS FLOW OF SEWAGE THROUGH CONSTRUCTION. CONTRACTORS PROPOSED METHOD FOR MAINTAINING SEWAGE FLOW SHALL BE SUBMITTED AND APPROVED BY THE SEWER MAINTENANCE DIVISION (316-268-4073) PRIOR TO STARTING AND BY-PASSING OF SEWAGE FLOWS.

20. ANY OVER EXCAVATION FROM MANHOLE AND PIPE REMOVAL SHALL BE BACKFILLED WITH AB-3 COMPACTED TO 90-95% ASTM D698.

21. THE CONTRACTOR SHALL PROTECT FROM DAMAGE AND SUPPORT EXISTING UTILITIES THROUGH CONSTRUCTION AS APPROVED BY THE UTILITY OWNER AND THE ENGINEER AT THE CONTRACTORS EXPENSE.

22. THE CONTRACTOR SHALL PROVIDE ALL TESTING AND SHOP DRAWING REVIEW. INSPECTION, TESTING AND SHOP DRAWING DOCUMENTS SHALL BE PROVIDED TO THE ENGINEERING FIRM FOR RECORDS.

23. THE CONTRACTOR SHALL USE BEST MANAGEMENT PRACTICES (BMP'S) TO PREVENT ERODED SOIL FROM ENTERING DITCHES, CULVERTS, AND DRAINAGE AREAS. THE CONTRACTOR SHALL FOLLOW THE INTENT OF THE BMP'S WHICH ACT AS A GUIDELINE.

24. EACH BIDDER SHALL VISIT THE SITE OF THE PROJECT BEFORE SUBMITTING A PROPOSAL IN ORDER TO BECOME BETTER INFORMED OF THE EXISTING FIELD CONDITIONS AND OBSTACLES WHICH MIGHT BE ENCOUNTERED DURING CONSTRUCTION. EACH BIDDER SHOULD UNDERSTAND THAT NO ADDITIONAL COMPENSATION WILL BE AWARDED FOR EXTRA WORK THAT SHOULD HAVE BEEN EVALUATED PRIOR TO BIDDING.

25. EXISTING UTILITIES AND THEIR LOCATIONS, AS SHOWN ON THE PLANS REPRESENT THE BEST INFORMATION OBTAINABLE FOR DESIGN. LOCATION INFORMATION HAS BEEN OBTAINED FROM VARIOUS COMPANIES AND IS EITHER FROM COMPANY UTILITY DRAWINGS OR COMPANY PROVIDED FIELD LOCATIONS. THE PLAN LOCATIONS SHOWN ARE NOT GUARANTEED. ADDITIONAL EXISTING UTILITIES MAY BE ENCOUNTERED.

26. ANY AND ALL UTILITY SYSTEM COMPONENTS DAMAGED DURING CONSTRUCTION SHALL BE REPAIRED AT THE CONTRACTOR'S EXPENSE.

27. THE PRECAST MANUFACTURER SHALL PROVIDE A SEALED DESIGN DETAIL FOR ALL PRECAST ITEMS USED ON THE PROJECT TO INSURE THE INTENT OF THE PLANS ARE MET.

28. MAINTAIN A MINIMUM OF 10-FOOT HORIZONTAL SEPARATION BETWEEN ALL WATER LINES (MAINS, SERVICES, AND FIRE HYDRANTS) AND ALL SANITARY SEWER LINES (MAIN, SERVICES, AND MANHOLES). ALL SEPARATION DISTANCES ARE TO BE MEASURED FROM EDGE-TO-EDGE, AT THE CLOSEST POINT.

29. MAINTAIN A MINIMUM OF 2-FOOT VERTICAL SEPARATION BETWEEN ALL WATER LINES (MAIN AND SERVICES) AND ALL GRAVITY SANITARY SEWER LINES (MAINS, SERVICES, AND MANHOLES) AT CROSSINGS. ALL SEPARATION DISTANCES ARE TO BE MEASURED FROM EDGE-TO-EDGE, AT THE CLOSEST POINT.

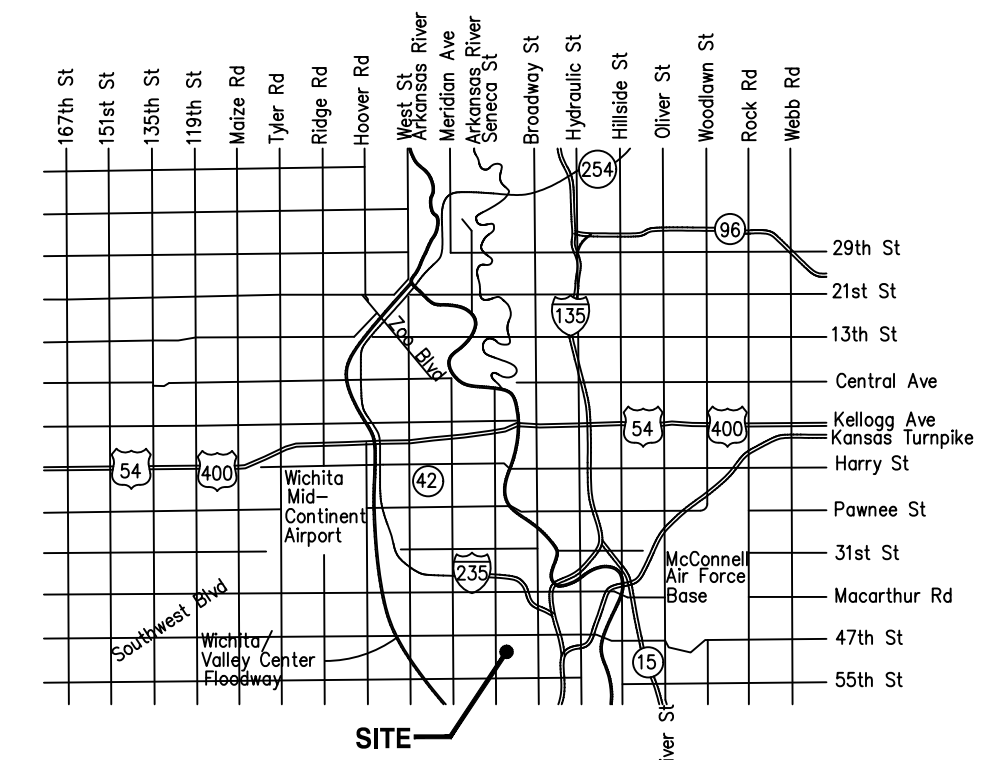
28. MAINTAIN A MINIMUM OF 2-FOOT VERTICAL SEPARATION BETWEEN ALL WATER LINES (MAINS AND SERVICES) AND ALL PRESSURIZED SANITARY SEWER LINES (FORCE MAINS AND SERVICES) AT CROSSINGS. WATERLINES MUST ALWAYS BE PLACED ABOVE PRESSURIZED SANITARY SEWER LINES WHERE THEY CROSS. ALL SEPARATION DISTANCES ARE TO BE MEASURED FROM EDGE-TO-EDGE, AT THE CLOSEST POINT.

Nowak Construction - Contractor  
 S. Lowe - City of Wichita, Field Project Engineer  
 E. Flores - City of Wichita, Inspector  
 As-built  
 Stub  
 Release Date (for connection purposes only): 11/17/2022  
 Completion Date:  
 pdf: apr 11/18/2022

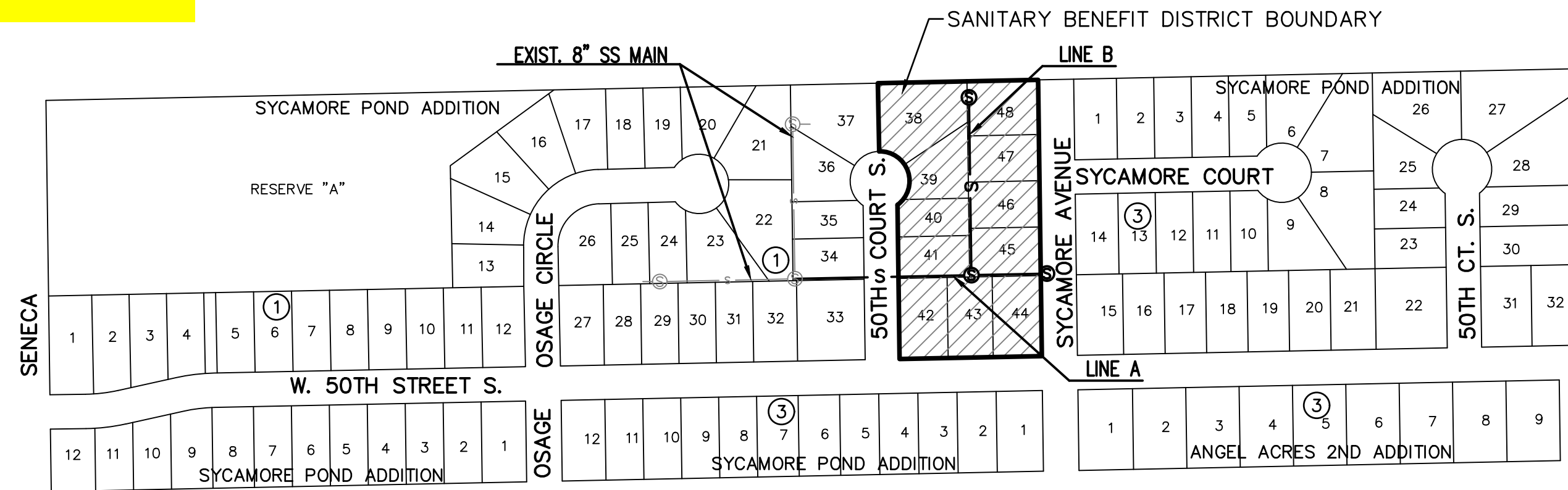
5441D  
 Basin: SWI-02

# SANITARY SEWER TO SERVE LOTS 38 THRU 48, BLOCK 1 SYCAMORE POND ADDITION CITY OF WICHITA, KANSAS

GARY JANZEN, P.E. CITY ENGINEER  
 PROJECT NUMBER 468-2021-018800; ORG 47265521 E1126



## VICINITY MAP



## BENEFIT DISTRICT



### LEGEND

- △ SECTION CORNER FOUND, ORIGIN UNCERTAIN UNLESS OTHERWISE NOTED
- MONUMENT FOUND, ORIGIN UNCERTAIN UNLESS OTHERWISE NOTED
- (P) PLATTED
- (M) MEASURED
- (C) CALCULATED
- ☒ UTILITY POLE W/ TRANSFORMER
- ☒☒ UTILITY POLE W/ LIGHT & TRANSFORMER
- ← DEADMAN ANCHOR
- (5)ou OVERHEAD UTILITY - # LINES
- ☒ ELECTRIC PEDESTAL
- ☒☒ ELECTRIC TRANSFORMER
- (W)(R)— WATER LINE
- ⊙ WATER LINE GATE VALVE
- ☒ FIRE HYDRANT
- ☒ SANITARY SEWER MANHOLE
- S— SANITARY SEWER LINE
- ☒ TELEPHONE PEDESTAL
- T— UNDERGROUND TELEPHONE LINE
- WOOD FENCE
- WROUGHT IRON FENCE
- //— METAL FENCE
- ///— PVC FENCE
- 1280— 1' CONTOUR INTERVAL
- B/B BACK OF CURB TO BACK OF CURB
- LINE NOT DRAWN TO SCALE

### INDEX TO SHEETS

- |    |  |
|----|--|
| 1  | TITLE SHEET                            |
| 2  | PROJECT CONTROL PLAN                   |
| 3  | SANITARY SEWER LINE A - PLAN & PROFILE |
| 4  | SANITARY SEWER LINE B - PLAN & PROFILE |
| 5  | EROSION CONTROL PLAN                   |
| 6  | DETAIL SHEET                           |
| 7  | DETAIL SHEET                           |
| 8  | DETAIL SHEET                           |
| 9  | DETAIL SHEET                           |
| 10 | DETAIL SHEET                           |
| 11 | DETAIL SHEET                           |
| 12 | DETAIL SHEET                           |
| 13 | FINAL PLAT                             |

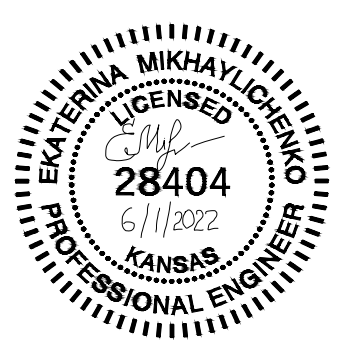
## BENCHMARKS

DATUM BENCHMARK:  
 VERTICAL DATUM IS NAVD88 BASED ON THE SEDGWICK COUNTY NTRIP GNSS NETWORK. ORTHOMETRIC HEIGHT WAS CALCULATED USING THE GEOD12B MODEL. UNITS ARE U.S. SURVEY FEET.

### BENCHMARKS:

BM #1: RAILROAD SPIKE IN WEST FACE POWER POLE 30'± EAST OF CENTERLINE SENECA AND 170'± NORTH OF CENTERLINE OF SUNRISE. ELEV=1272.65

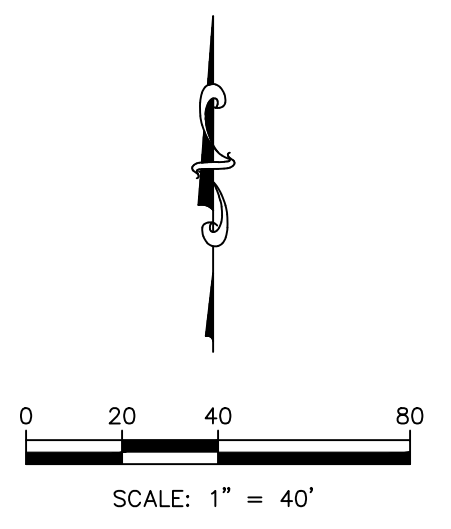
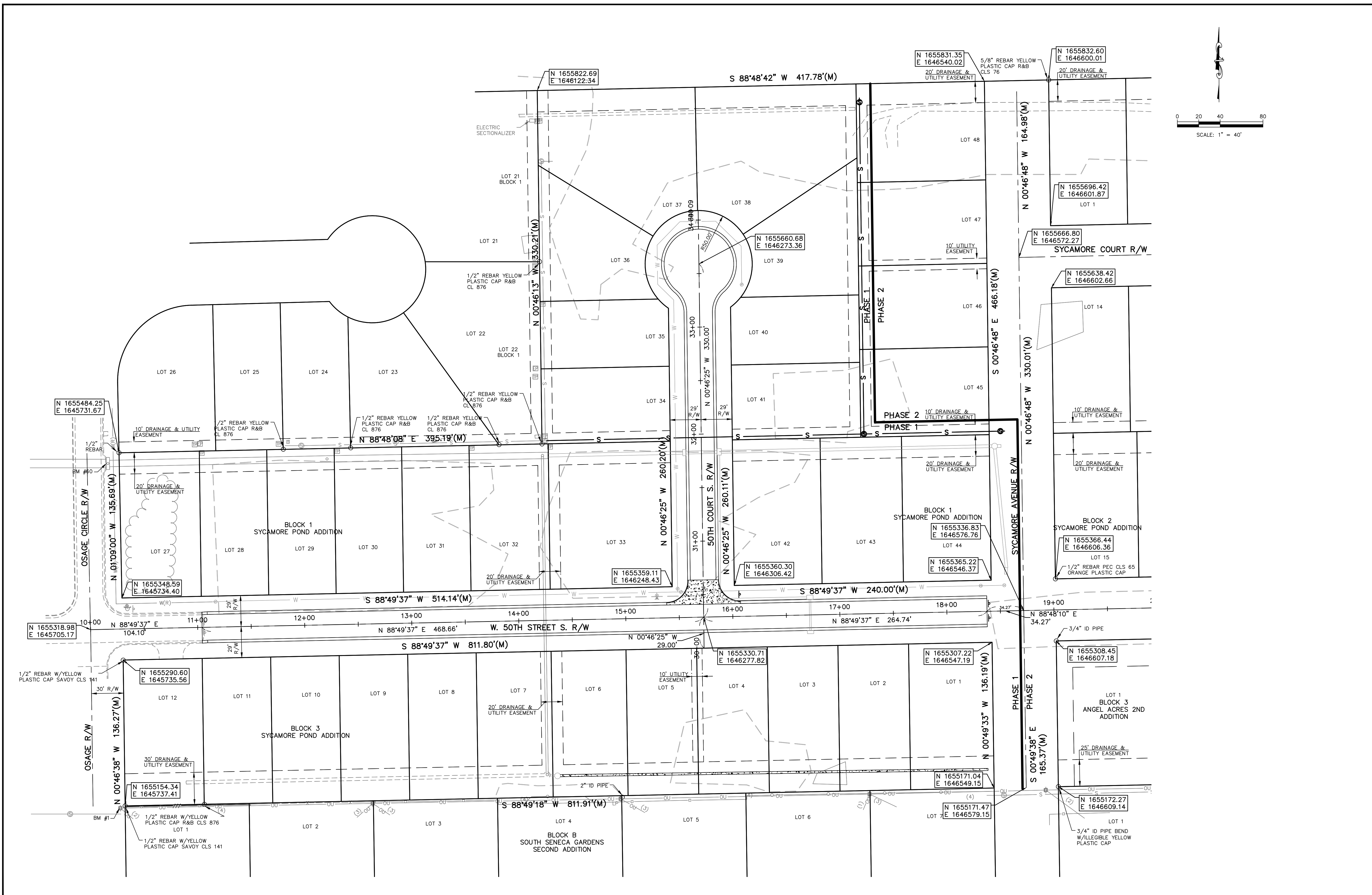
BM #60: CHISELED "SQUARE" W/DIMPLE SET ON CENTER OF WEST EDGE OF CURB INLET, EAST SIDE OF OSAGE CIRCLE, 150'± NORTH OF 50TH ST S. ELEV=1272.57



JUNE 2022

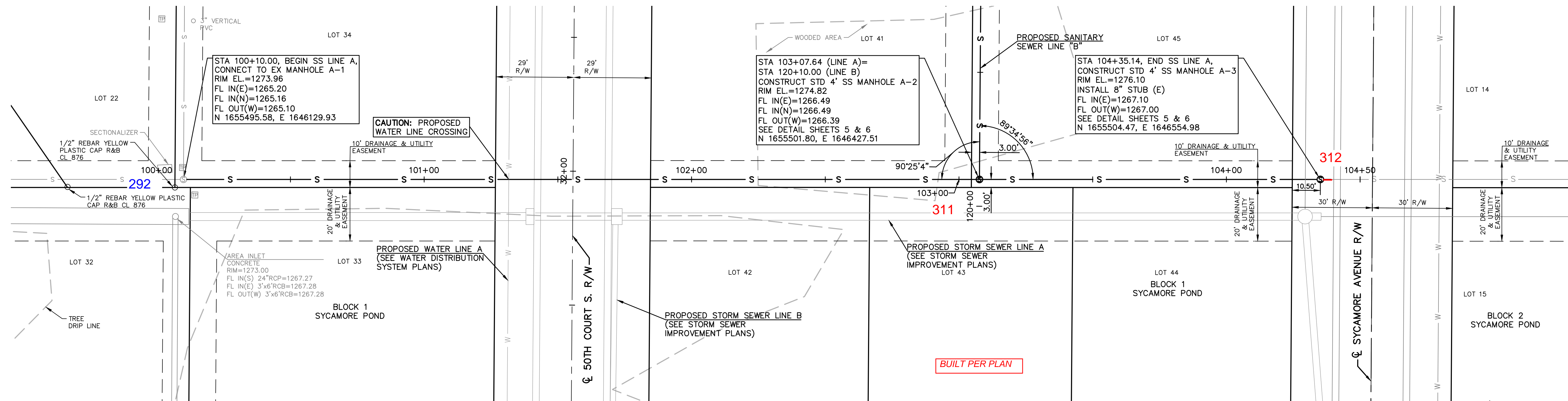
PROJ. NO. G19\_1259-1 DSN: TRA EKAETERINA MIKHAYLICHENKO  
 CFN: 1259-1S\_TS DWN: JT ENGINEER  
 KS # 28404  
 200 N. EMPORIA, SUITE 100  
 WICHITA, KANSAS 67202  
 PH. (316) 440-4304 | FAX (316) 440-4309  
[wh@kven.com](mailto:wh@kven.com) | [www.kven.com](http://www.kven.com)  
**KAW VALLEY ENGINEERING**  
 KAW VALLEY ENGINEERING, INC., IS AUTHORIZED TO OFFER ENGINEERING SERVICES BY KANSAS STATE CERTIFICATE OF AUTHORIZATION # E-113. EXPIRES 12/31/22

1	6-1-22	REVISED PER CITY AND CLIENT COMMENT	JT	SRB
0	4-15-22	INITIAL ISSUE	JT	SRB

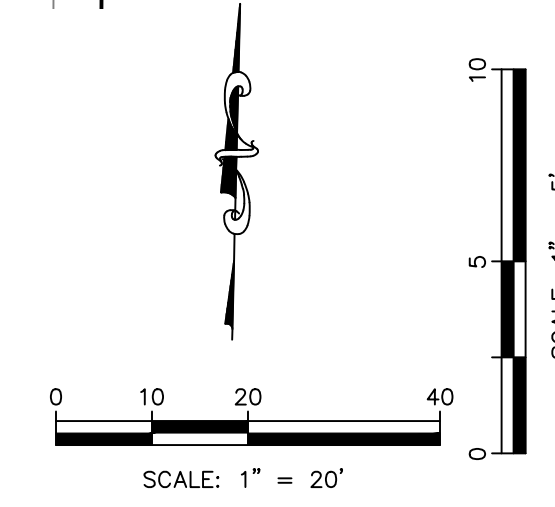
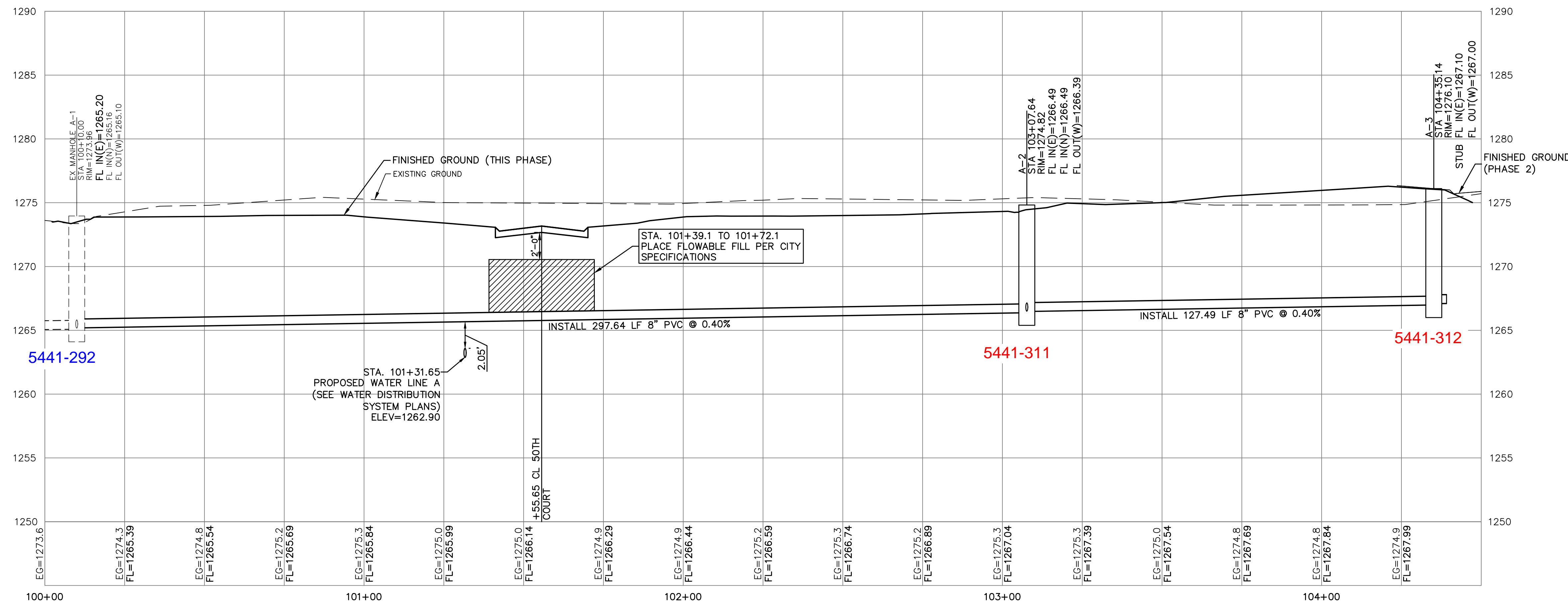


KS	KS	CHK
JT	JT	DWN
KM	SRB	DSN
REVISED PER CITY AND CLIENT COMMENT		DESCRIPTION
6-1-22	4-15-22	DATE
1	0	REV
28404		PROFESSIONAL ENGINEER
EKA TERINA MIKHAYLICHENKO		ENGINEER
KS # 28404		
200 N. EMPORIA, SUITE 100 WICHITA, KANSAS 67202 PH. (316) 440-4304   FAX (316) 440-4309 www.kawvalleyeng.com   www.kveing.com		
<b>KAW VALLEY ENGINEERING</b> KAW VALLEY ENGINEERING, INC. IS AUTHORIZED TO OFFER ENGINEERING SERVICES BY KANSAS STATE CERTIFICATE OF AUTHORIZATION # E-113. EXPIRES 12/31/22		
<b>SYCAMORE POND ADDITION</b> <b>W 50TH STREET S &amp; S OSAGE CIRCLE</b> <b>WICHITA, KANSAS</b> <b>PHASE II - SANITARY SEWER IMPROVEMENT PLANS</b> <b>PROJECT CONTROL PLAN</b>		
PROJ. NO.	G19-1259	
DESIGNER	TRA	
DRAWN BY	JT	
CFN	1259-1S_PCP	
SHEET	2	1

THIS DRAWING SHALL NOT BE UTILIZED BY ANY PERSON, FIRM, OR CORPORATION IN WHOLE OR IN PART WITHOUT THE SPECIFIC PERMISSION OF KAW VALLEY ENGINEERING, INC.



SANITARY SEWER LINE A



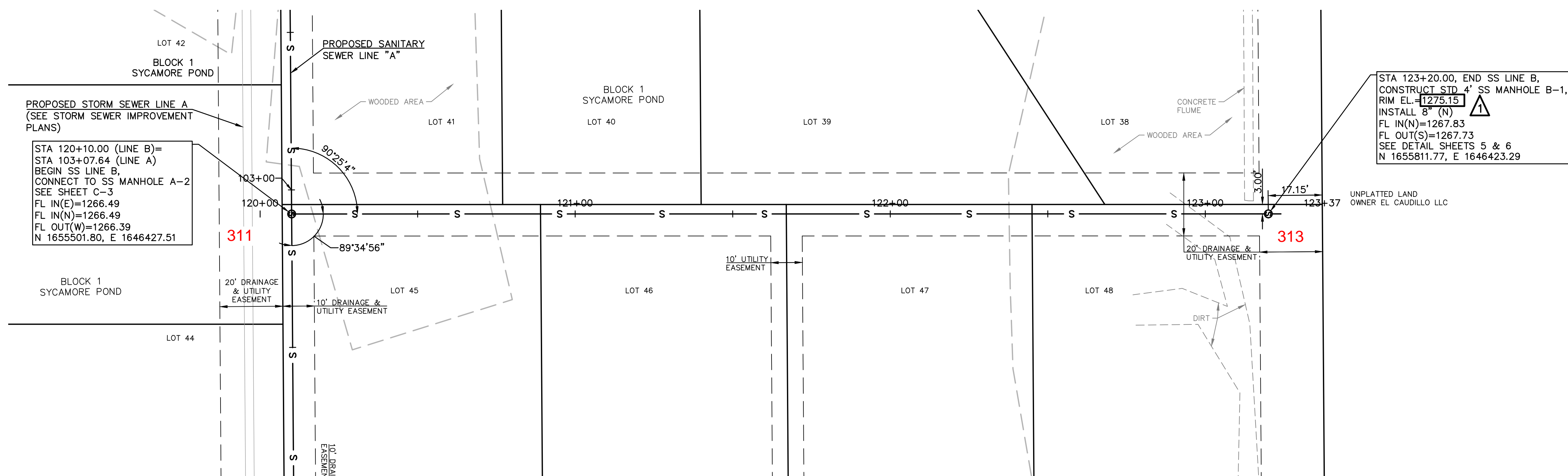
KS	KS	CHK
JT	JT	DWN
KM	SRB	DSN
REVIS PER CITY AND CLIENT COMMENT		
6-1-22	4-15-22	DATE
1	0	REV
DESCRIPTION		

**EKATERINA MIKHAYLICHENKO**  
 ENGINEER  
 KS # 28404

**KAW VALLEY ENGINEERING**  
 KAW VALLEY ENGINEERING, INC. IS AUTHORIZED TO OFFER ENGINEERING SERVICES BY KANSAS STATE CERTIFICATE OF AUTHORIZATION # E-113. EXPIRES 12/31/22

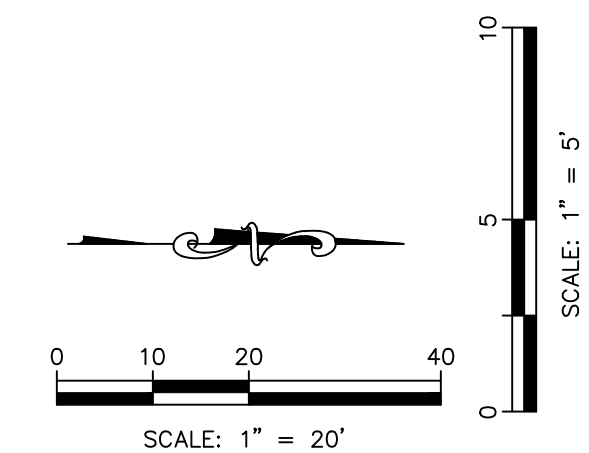
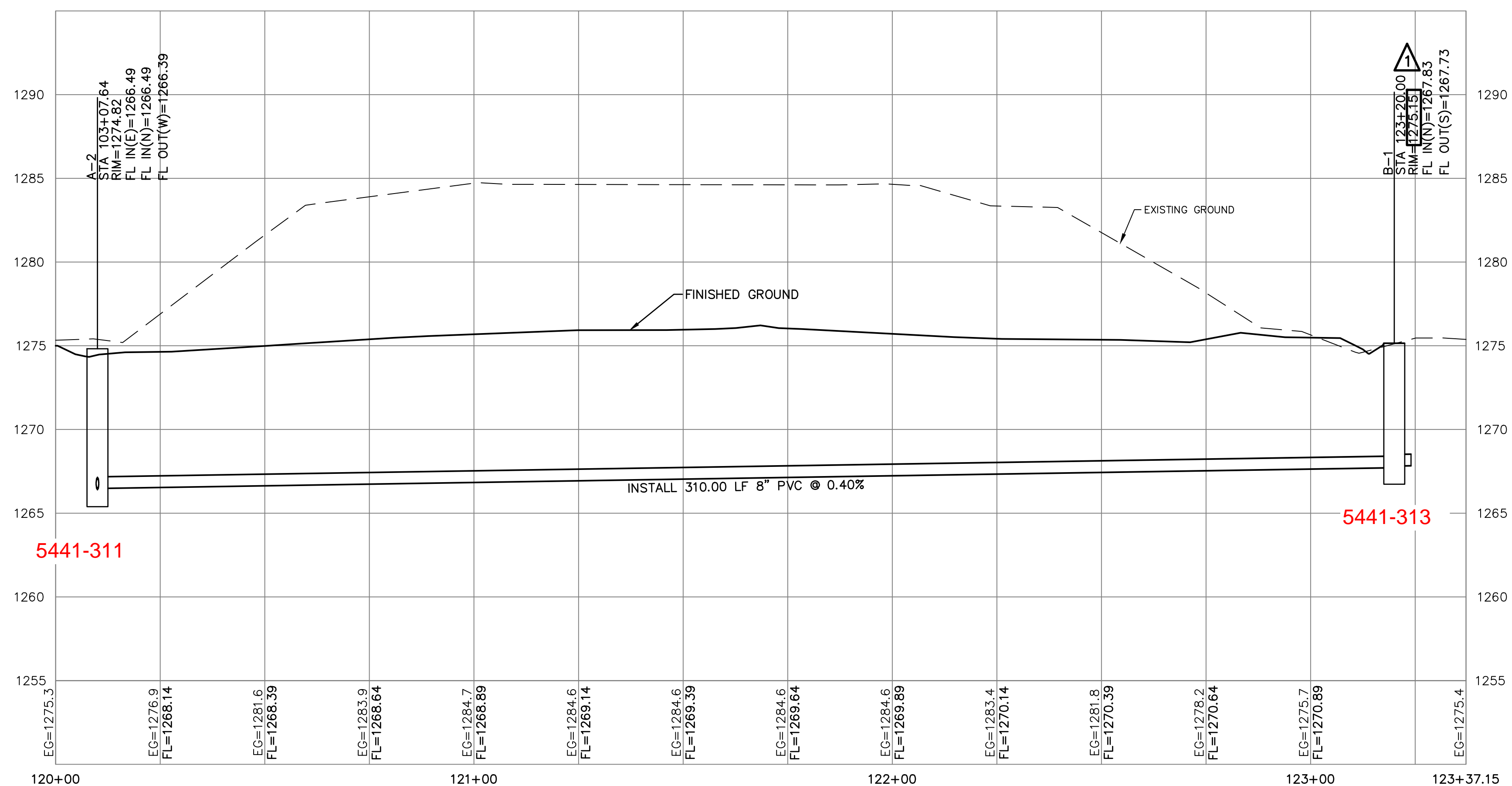
<b>SYCAMORE POND ADDITION</b>	
W 50TH STREET S & S OSAGE CIRCLE	
WICHITA, KANSAS	
<b>PHASE II - SANITARY SEWER IMPROVEMENT PLANS</b>	
<b>SANITARY SEWER LINE A - PLAN &amp; PROFILE</b>	
PROJ. NO.	G19-1259
DESIGNER	IRA
DRAWN BY	ST
CFN	1259-1S-SPP
SHEET	3
REV	1

THIS DRAWING SHALL NOT BE UTILIZED BY ANY PERSON, FIRM, OR CORPORATION IN WHOLE OR IN PART WITHOUT THE SPECIFIC PERMISSION OF KAW VALLEY ENGINEERING, INC.



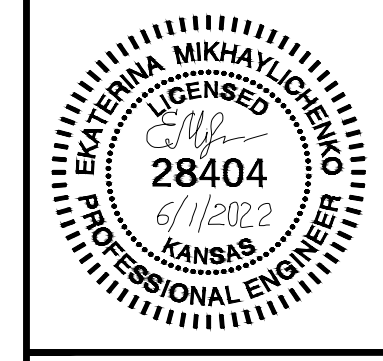
BUILT PER PLAN

SANITARY SEWER LINE B



KS	KS
JT	JT
KM	SRB
DSN	DWN
CHK	CHK

REV	DATE	DESCRIPTION
1	6-1-22	REVISED PER CITY AND CLIENT COMMENT
0	4-15-22	INITIAL ISSUE



EKA TERINA MIKHAYLICHENKO  
ENGINEER  
KS # 28404

200 N. EMPORIA, SUITE 100  
WICHITA, KANSAS 67202  
PH. (316) 440-4304 | FAX (316) 440-4309  
www.kaveg.com | www.kveg.com

**KAW VALLEY ENGINEERING**

KAW VALLEY ENGINEERING, INC. IS AUTHORIZED TO OFFER ENGINEERING SERVICES BY KANSAS STATE CERTIFICATE OF AUTHORIZATION # E-113. EXPIRES 12/31/22

**SYCAMORE POND ADDITION**  
W 50TH STREET S & S OSAGE CIRCLE  
WICHITA, KANSAS

**PHASE II - SANITARY SEWER IMPROVEMENT PLANS**  
SANITARY SEWER LINE B - PLAN & PROFILE

PROJ. NO.	G19_1259
DESIGNER	IRA
DRAWN BY	ST
CFN	1259-1S_SPP
SHEET	4
REV	1

THIS DRAWING SHALL NOT BE UTILIZED BY ANY PERSON, FIRM, OR CORPORATION IN WHOLE OR IN PART WITHOUT THE SPECIFIC PERMISSION OF KAW VALLEY ENGINEERING, INC.