

GENERAL NOTES:

- The Contractor shall comply with all applicable safety regulations. All construction shall be completed following current City Standard Specifications and special Provisions.
- Contractor will be required to provide notice to utility companies a minimum of seventy-two (72) hours prior to any excavation, as follows:
Kansas One-Call 687-2470
The Contractor must notify the following in case of an emergency:
AT&T 1-800-246-6464
Black Hills Energy 1-800-694-8989
City of Wichita Water & Sewer 1-316-219-8921
City of Wichita Stormwater 1-316-268-4090
City of Wichita Traffic 1-316-268-4034
Cox Communications 1-888-249-3530
Kansas Gas Service 1-888-462-4950
Wear Energy 1-800-544-4857
- Utility service lines, poles, etc. are to be adjusted as necessary by others prior to construction unless the plans specifically call for their adjustment by the Contractor or unless the plans specifically identify a utility to be adjusted by its owner during construction. Existing utilities and their location, as shown on the plans, represent the best information obtainable for design. The Contractor will be required to work around existing utilities within the right-of-way which do not conflict with proposed construction.
- Rubble from the removal of miscellaneous structures and excess excavation which is to be wasted shall be disposed of on sites to be provided by the Contractor. These sites shall be approved by the Engineer as to suitability, appearance and site location. Locations, in the opinion of the Engineer, that will leave an unsightly appearance will not be approved. All disposal sites must be approved by the Kansas Department of Health and Environment. Material either stockpiled or disposed of in a flood plain would require a Kansas State Board of Agriculture permit. Any material dumped in waters of the United States or wetlands is subject to U.S. Corps of Engineers permitting regulations. Any material buried or stockpiled beyond approved construction limits will require additional archaeological investigations unless buried in a previously approved borrow location.
- Trees and shrubs in public right-of-way which are in direct conflict with proposed new construction shall be removed by the Contractor with the City Engineer's approval. Trees and shrubs which are not in direct conflict with proposed new construction shall be saved and protected from damage.
- The Contractor shall give all property owners and/or tenants of developed property adjoining the construction of this project a minimum of ten (10) days notice prior to start of construction.
- The Contractor shall be responsible for preserving property irons. The Contractor will be required to re-establish any property irons which are damaged or destroyed by his construction operations. Such irons shall be re-established by a licensed land surveyor in accordance with state laws.
- The Engineering Division shall field locate water valves one time during construction when requested by the Contractor. It shall be the Contractor's responsibility to preserve such field locations during the construction process. Water valves, valve boxes or fire hydrants damaged during construction shall be repaired by Contractor at his own expense. Valve boxes and water meters within the project limits shall be adjusted to match field grades by the contractor.
- The Contractor shall notify the inspecting engineer and Dawnita Reinhardt at 316-268-4574 with the City of Wichita with the anticipated construction start date and notify them of project completion. Staking and inspection for this project will be the responsibility of the Contractor.
- If traffic will be impacted by construction, a traffic control plan must be submitted and approved by the project engineer before construction can begin. The Contractor shall be responsible for all traffic control measures to facilitate construction. All construction zone markings and signage shall conform to the latest version of the Manual on Uniform Traffic Control Devices (MUTCD) as published by the US Dept. of Transportation, Federal Highway Administration. All costs associated with construction markings and signage shall be the Contractor's responsibility.
- All elevations shown are NAVD 88.
- All areas disturbed during construction that will not be under proposed pavement shall be restored to match existing conditions.
- City Maintenance of sanitary sewer mains ends at last structure within the easement or right-of-way.
- All stubs and capped pipes shall be located with green plastic tape in the same manner as risers. Contractor shall limit the extent of trench open overnight and weekends to less than 50 feet.
- Connecting to Existing Manholes:
Prior to laying sewer lines using existing stubs in existing manholes, the Contractor shall expose and verify the elevation, grade and alignment of existing stubs and notify the Engineer of any deviation from the plans. Where the stub is unusable due to elevation, grade or alignment, the Contractor shall remove the stub and plug the hole, and reshape the existing manhole invert to provide smooth flow. Where connecting to an existing manhole that does not have an existing stub, the Contractor shall core cut into existing manhole wall to make connection using approved water stop gasket, and reshape the existing manhole invert to provide smooth flow. The cost to connecting to existing manholes is incidental to the project.

- Contractor shall limit the extent of trench open overnight and weekend to less than 50 feet.
- Contractor shall provide positive drainage away from all manhole covers.
- The Contractor shall prevent any construction debris from entering the existing sanitary sewer during construction.
- Any over excavation from manhole and pipe removal shall be backfilled with AB-3 compacted to 90-95% ASTM D698.
- The Contractor shall prevent from damage and support existing utilities through construction as approved by the utility owner and the Engineer at the contractor's expense.
- All excess excavation shall remain on-site and shall be stockpiled or spread at a location determined by the engineer.
- Contractor shall grade around exposed manholes at a 1:1 slope. Manholes set lower than existing grade shall have a 9" berm constructed around manhole to prevent infiltration into sanitary sewer system. Cost of dirt, labor, equipment, etc. to be incidental to cost of manhole.
- All areas disturbed during construction shall be seeded, mulched, and fertilized as follows (Permanent Seeding):
Seed: Kansas Premium Fescue Blend 8 lbs/1000 sq ft
Mulch: Prairie Hay; 2 tons/acre
Fertilizer: 12-24-12 850 lbs/acre
All costs associated with seeding, mulching, and fertilizing shall be included in bid item "Seeding". All seeding operations shall conform to City of Wichita Standard Specifications.
- The Contractor shall not begin work on the project until the Project Inspector is assigned and on site. Any work completed without inspection will be required to be uncovered for inspection at the Contractor's expense.
- All existing and proposed erosion control measures including silt fences, erosion control mat, straw bales, inlet barriers, and cost entrance shall be maintained throughout construction by the contractor and until project is accepted by the City of Wichita. The on-site engineer shall complete weekly reports on the status of erosion control measures. The contractor shall be required to comply with maintenance and/or replacement of erosion control measures as determined by the on-site engineer until project is accepted by City of Wichita. Maintenance and/or replacement of erosion control measures to be paid by L.S. bid item "Site Restoration".
- See the City of Wichita Construction Specifications for construction, installation requirements for this project.

BENCHMARKS

- BM #1:
Square cut on top of South curb of 21st St. N.
334'± West and 32'± South of the intersection of
21st St. N. and Cleveland Ave.
Elev. = 1307.56 (NAVD88)
- BM #2:
Square cut on top of South concrete pad of
monitoring well 26'± East and 51'± South of the
intersection of 21st St. N. and Cleveland Ave.
Elev. = 1308.70 (NAVD88)
- BM #3:
C.O.W. BM Disc on top of South concrete wall
918'± West and 147'± North of the intersection of
21st St. N. and Cleveland Ave.
Elev. = 1312.58 (NAVD88)

AS-BUILT PLANS

Contractor = Wilks Underground
Inspector = Fred Smith
Baughman Company

As-Built Plans = FES

Construction Began = October 2022

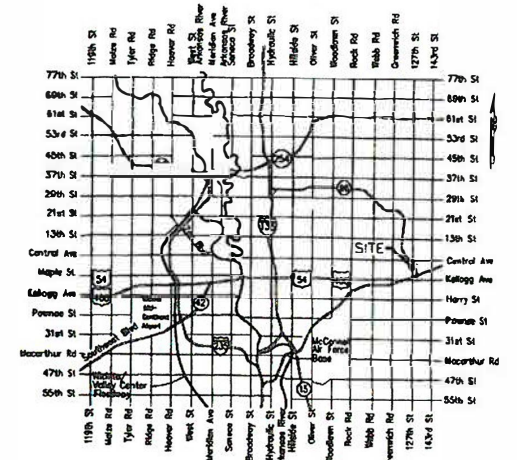
Construction End = November 2022

Sanitary Sewer to serve Lot 1, Blk A Life Church Addition CITY OF WICHITA, KANSAS

Gary Janzen, P.E. City Engineer
PPS-2022-009793

D. Reinhardt - City of Wichita, Inspector
Stub
Release Date: 1/19/2023
: apr 1/27/2023

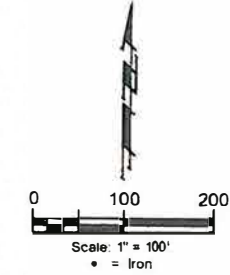
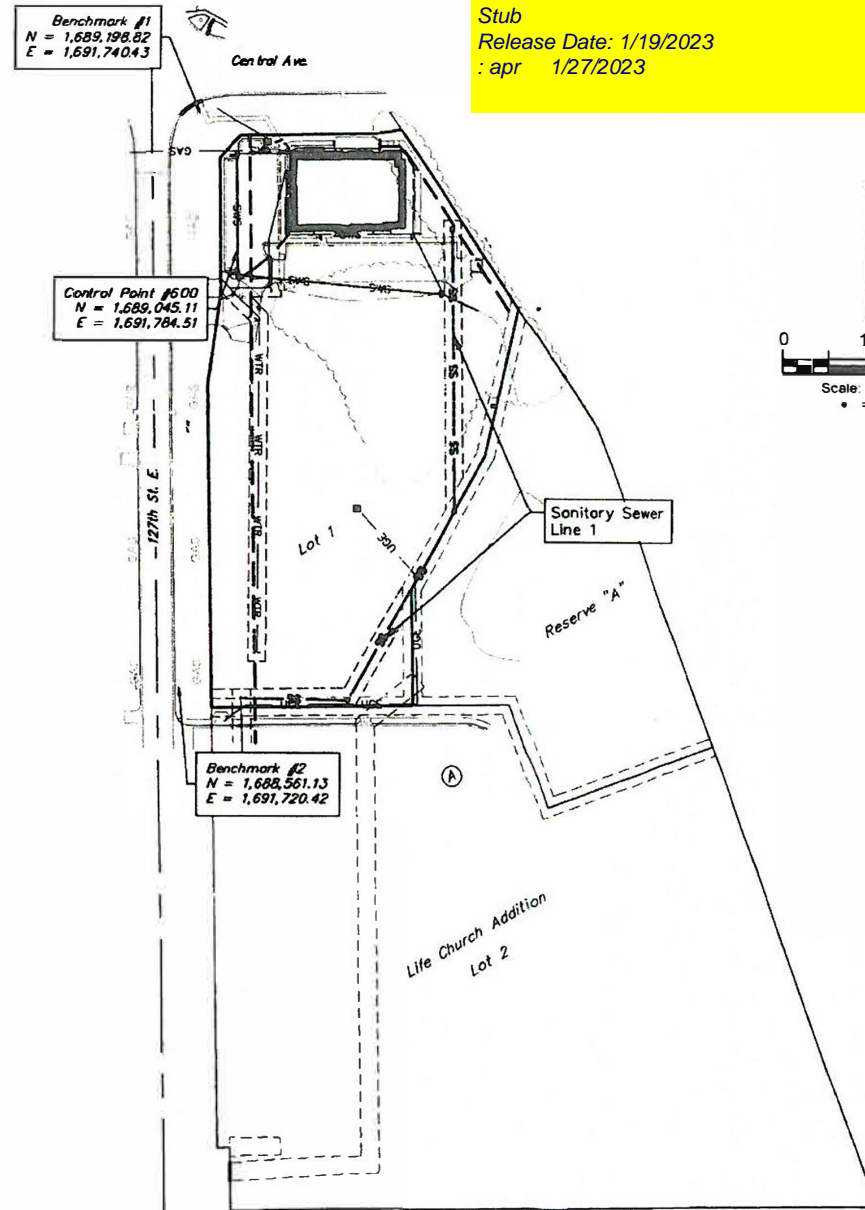
6347D
4MC-MH



Vicinity Map

Sheet Index

Title Sheet	1
Line 1	2-3
Manhole Detail	4
Manhole Lid Detail	5
Erosion Details	6-10
Erosion Control Plan	11
Copy of Plat	12



APPROVED AS NOTED
BY WICHITA PUBLIC WORKS
ENGINEERING DIVISION

Engineering approved by Shawn Mellies on 07.29.22

Utilities approved by Debra Arx on 07.29.22

NOTE TO CONTRACTORS
Inspection and testing for this project is to be provided by a Licensed Consulting Engineering Firm under contract with the Owner/Developer. Said inspection to be in accordance with the City of Wichita standard construction engineering practices and certified by a Licensed Professional Engineer in the state of Kansas. No work shall be performed by the Contractor without such inspection nor shall any work be commenced without written authorization by City Engineering. All Construction and Materials shall comply with the current City of Wichita Specifications and Standards and Special Provisions (on file and available at Wichita.gov).
An approved copy of these plans signed by City staff are required on-site.

Baughman Project # = 22-10-E339



Apr 20, 2022

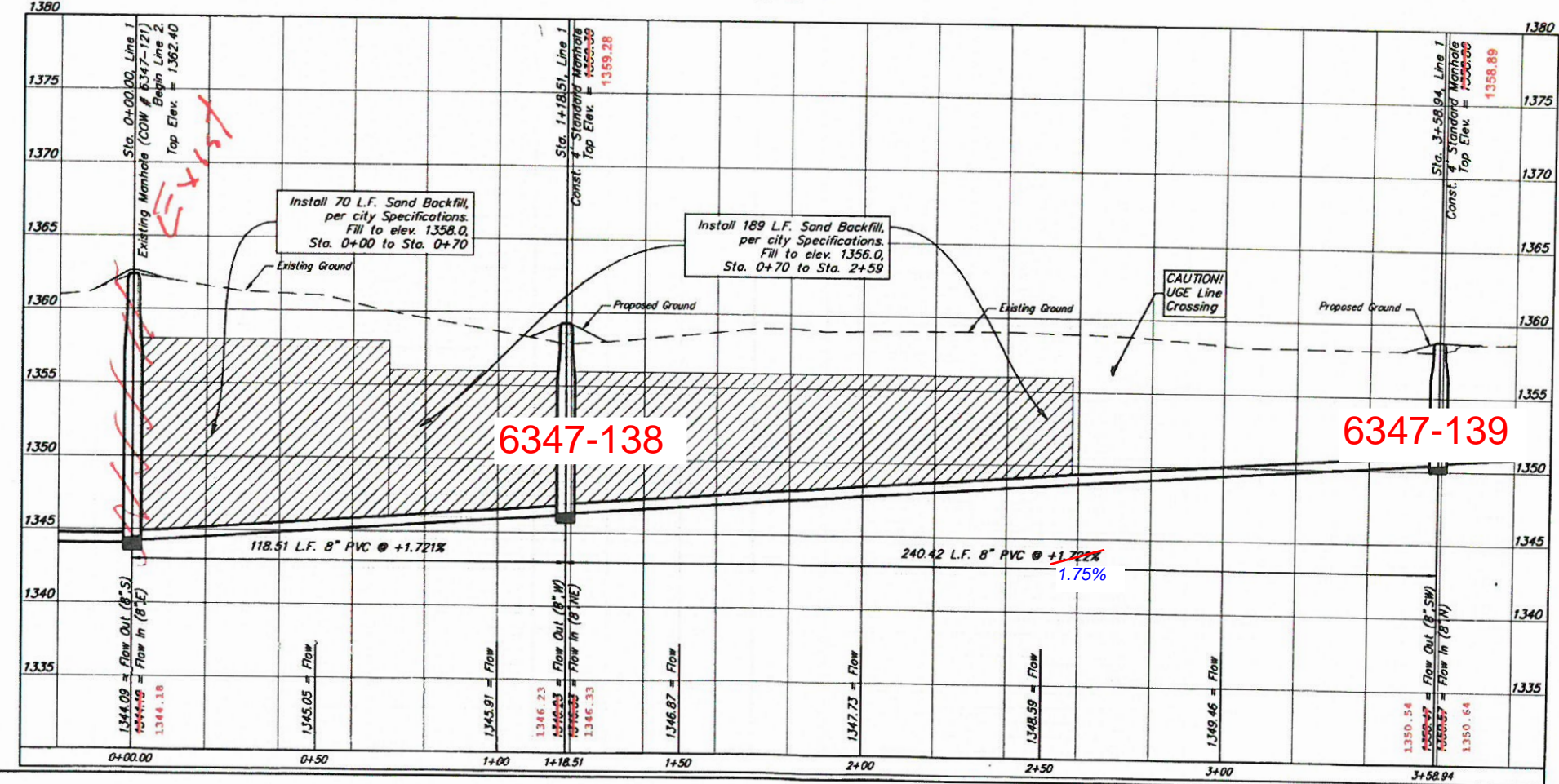
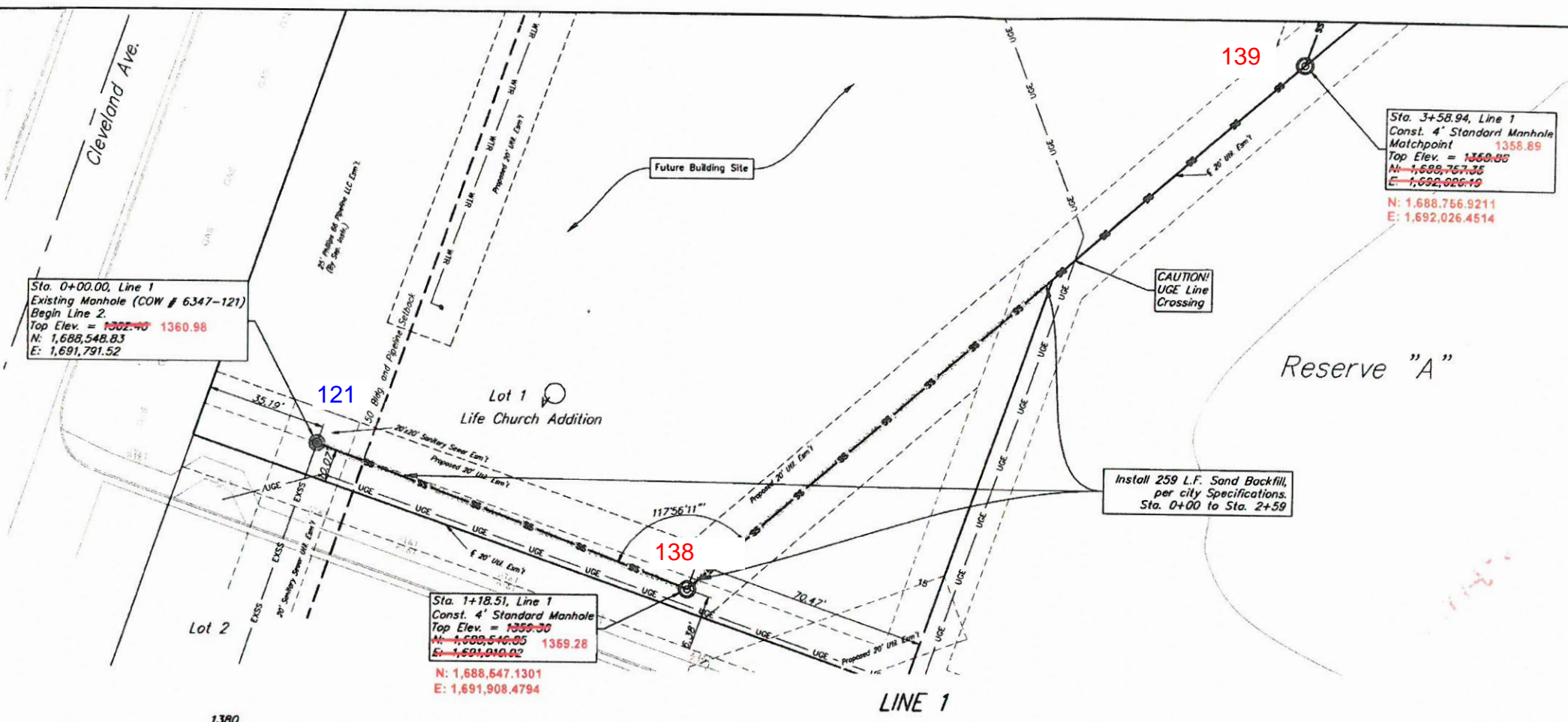
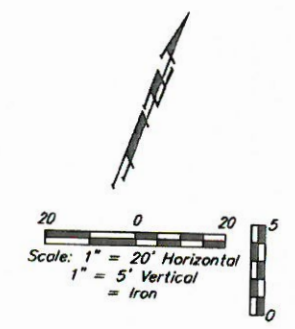
BAUGHMAN COMPANY
315 Ellis St. Wichita, KS 67211 316-262-7271
BaughmanCo.com


BENCHMARKS

SITE BENCHMARK #1
Chiseled on East side of Traffic Signal Pole
Elevation=1368.90
(NAVD88)

SITE BENCHMARK #2
Chiseled on SE Cor. of CB
Elevation=1362.39
(NAVD88)

CONTROL POINT #600
#4 Rebar with Baughman Cap
Elevation=1367.43
(NAVD88)





BAUGHMAN COMPANY
315 Ellis St.
Wichita, KS 67211
316-262-7271
BaughmanCo.com

Life Church Addition

SS Line 1
Sta. 0+00.00
to
Sta. 3+58.94

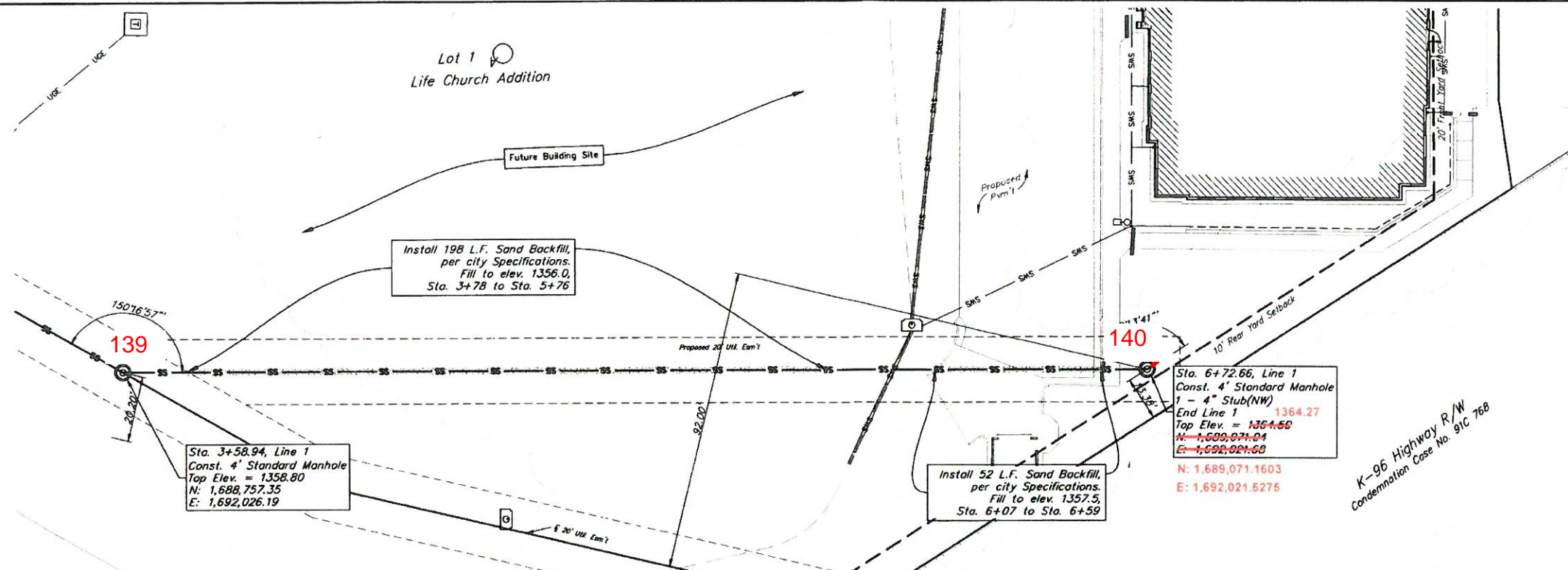
Sanitary Sewer
Improvements

PROJECT NUMBER:

DESIGN TJW DRAWN JA
DATE Apr. 20, 2022

SHEET **2** OF **12**

File: E:\Projects\127-Life Church (Crest Point) Site Plans 21-06-E925\Engineering\Phase 1\PP5\SCP_PPS.dwg



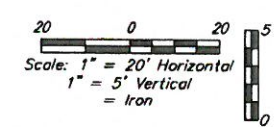
BENCHMARKS

SITE BENCHMARK #1
Chiseled on East side of Traffic Signal Pole
Elevation=1368.90
(NAVD88)

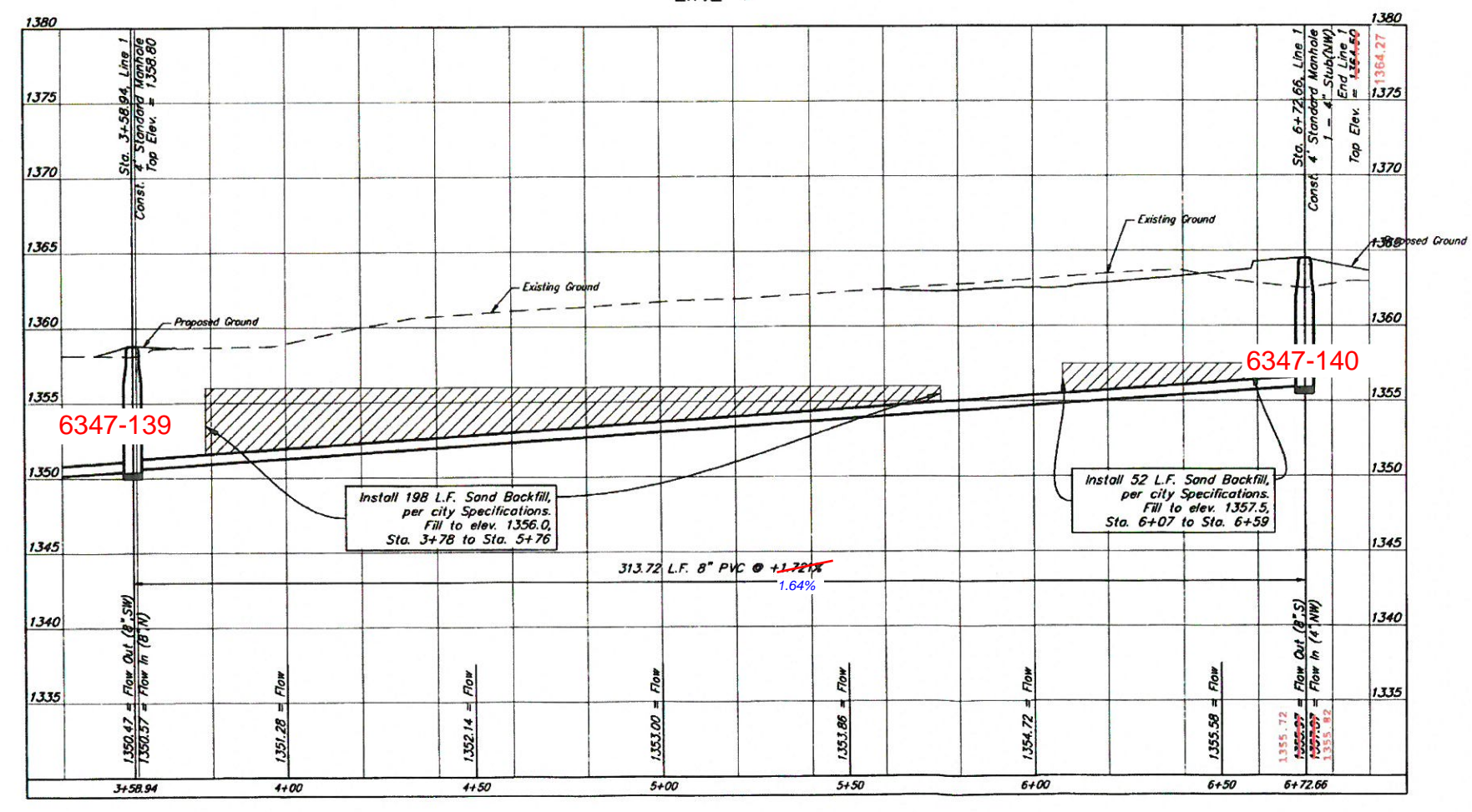
SITE BENCHMARK #2
Chiseled on SE Cor. of CB
Elevation=1362.39
(NAVD88)

CONTROL POINT #600
#4 Rebar with Baughman Cap
Elevation=1367.43
(NAVD88)

K-96 Highway R/W
Condemnation Case No. 91C 768



LINE 1



BAUGHMAN
COMPANY

315 Ellis St
Wichita, KS 67211
316-262-7271
BaughmanCo.com

Life Church Addition

SS Line 1
Sta. 3+58.94
to
Sta. 6+72.66

Sanitary Sewer
Improvements

PROJECT NUMBER

DESIGN TJW DRAWN JA
DATE Apr. 20, 2022

SHEET **3** OF **12**

File: E:\Projects\C17-Life Church (Crest Point) Site Plans 21-06-EG023-Engineering\Phase 1\PPS\PCP PPS.dwg