

GENERAL NOTES:

- The Contractor shall comply with all applicable safety regulations. All construction shall be completed following current City Standard Specifications and Special Provisions.
Contractor will be required to provide notice to utility companies a minimum of seventy-two (72) hours prior to any excavation, as follows:
Kansas One-Call 687-2470
- The Contractor must notify the following in case of an emergency:
AT&T 1-800-246-8464
Black Hills Energy 1-800-694-8989
City of Wichita Water & Sewer 1-316-219-8921
City of Wichita Stormwater 1-316-268-4090
City of Wichita Traffic 1-316-268-4034
Cox Communications 1-888-249-3530
Kansas Gas Service 1-888-482-4950
Energy 1-800-544-4857
- Utility service lines, poles, etc. are to be adjusted as necessary by others prior to construction unless the plans specifically call for their adjustment by the Contractor or unless the plans specifically identify a utility to be adjusted by its owner during construction. Existing utilities and their location, as shown on the plans, represent the best information obtainable for design. The Contractor will be required to work around existing utilities within the right-of-way which do not conflict with proposed construction.
- Rubble from the removal of miscellaneous structures and excess excavation which is to be wasted shall be disposed of on sites to be provided by the Contractor. These sites shall be approved by the Engineer as to suitability, appearance and site location. Locations, in the opinion of the Engineer, that will leave an unsightly appearance will not be approved. All disposal sites must be approved by the Kansas Department of Health and Environment. Material either stockpiled or disposed of in a flood plain will require a Kansas State Board of Agriculture permit. Any material dumped in waters of the United States or wetlands is subject to U.S. Corps of Engineers permitting regulations. Any material buried or stockpiled beyond approved construction limits will require additional archaeological investigations unless buried in a previously approved borrow location.
- Trees and shrubs in public right-of-way which are in direct conflict with proposed new construction shall be removed by the Contractor with the City Engineer's approval. Trees and shrubs which are not in direct conflict with proposed new construction shall be saved and protected from damage.
- The Contractor shall give all property owners and/or tenants of developed property abutting the construction of this project a minimum of ten (10) days notice prior to start of construction.
- The Contractor shall be responsible for preserving property irons. The Contractor will be required to re-establish any property irons which are damaged or destroyed by his construction operations. Such irons shall be re-established by a licensed land surveyor in accordance with state laws.
- The Engineering Division shall field locate water valves one time during construction when requested by the Contractor. It shall be the Contractor's responsibility to preserve such field locations during the construction process. Water valves, valve boxes or fire hydrants damaged during construction shall be repaired by Contractor at his own expense. Valve boxes and water meters within the project limits shall be adjusted to match final grades by the contractor.
- If traffic will be impacted by construction, a traffic control plan must be submitted and approved by the City Traffic Engineer, Mike Armour at traffic@wichita.gov, before construction can begin. The Contractor shall be responsible for all traffic control measures to facilitate construction. All construction zone markings and signage shall conform to the latest version of the Manual on Uniform Traffic Control Devices (MUTCD) as published by the US Dept. of Transportation, Federal Highway Administration. All costs associated with construction markings and signage shall be the Contractors responsibility.
- All elevations shown are NAVD 88.
- All areas disturbed during construction that will not be under proposed pavement shall be restored to match existing conditions.
- City Maintenance of sanitary sewer mains ends at last structure within the easement or right-of-way.
- All stubs and capped pipes shall be located with green plastic tape in the same manner as risers.
- Connecting to Existing Manholes:
Prior to laying sewer lines using existing stubs in existing manholes, the Contractor shall expose and verify the elevation, grade and alignment of existing stubs and notify the Engineer of any deviation from the plans. Where the stub is unusable due to elevation grade or alignment, the Contractor shall remove the stub and plug the hole, and reshape the existing manhole invert to provide smooth flow. Where connecting to an existing manhole that does not have an existing stub, the Contractor shall core cut into existing manhole wall to make connection using approved water stop gasket, and reshape the existing manhole invert to provide smooth flow. The cost to connecting to existing manholes is incidental to the project.
- Contractor shall limit the extent of trench open overnight and weekends to less than 50 feet.
- Contractor shall provide positive drainage away from all manhole covers.
- The Contractor shall prevent any construction debris from entering the existing sanitary sewer during construction.
- The Contractor shall be responsible for maintaining continuous flow of sewage through construction. Contractors proposed method for maintaining sewage flow shall be submitted and approved by the Sewer Maintenance Division (316-268-4073) prior to starting and by-passing of sewage flows.
- Any over excavation from manhole and pipe removal shall be backfilled with AB-3 compacted to 90-95% ASTM D698.
- The Contractor shall protect from damage and support existing utilities through construction as approved by the utility owner and the Engineer at the contractors expense.

DEVELOPER:
Louis J. Robelli, Managing Member
Murdock Properties, LLC
5929 S. Clifton
Derby, KS 67037
(316)650-7536

Benchmarks

- BM #1:** "+" Cut on N. San. Sewer MH rim approx. 3' S. & 3' W of Lot 2, Block C, Towne Parc 8th Add.
Elev. = 1399.12 NAVD88
- BM #2:** "+" Cut on N. San. Sewer MH rim approx. 21.1' S. & 3' W of Lot 8, Block C, Towne Parc 8th Add.
Elev. = 1393.99 NAVD88
- BM #3:** "□" Cut on top of curb 16.7' N. of NE corner Lot 7, Block 2, Turtle Run 3rd Add.
Elev. = 1390.32 NAVD88
- BM #4:** "+" Cut on E. top of curb adjacent to Lots 6 & 7, Block A, Towne Parc 4th Add.
Elev. = 1397.86 NAVD88

SANITARY SEWER IMPROVEMENTS to serve TOWNE PARC 8TH ADDITION-PHASE II

Lots 1-9, Block A; Lots 1-17, Block B; Lots 1-13, Block C; Lots 1-3, Block A

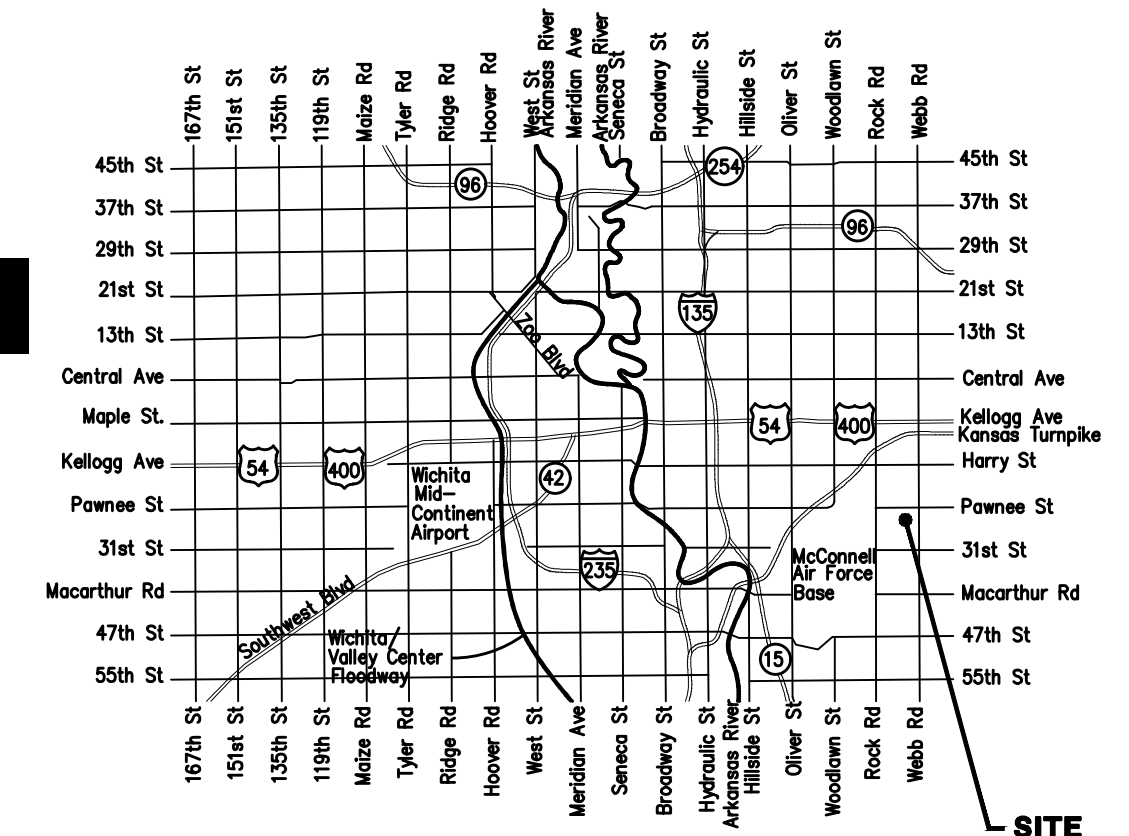
CITY OF WICHITA, KANSAS

Gary Janzen, P.E. City Engineer
Project Number: 468-2022-002143
Munis#: E2035 ORG#: 4726522

Mies Construction - Contractor
D. Gierhart - City of Wichita, Field Project Engineer
R. Skilling - City of Wichita, Inspector
As-built
Stubs & Risers
Release Date (for connection purposes only): 8/9/2022
Completion Date:
pdf: apr 8/10/2022

Munis# E2034

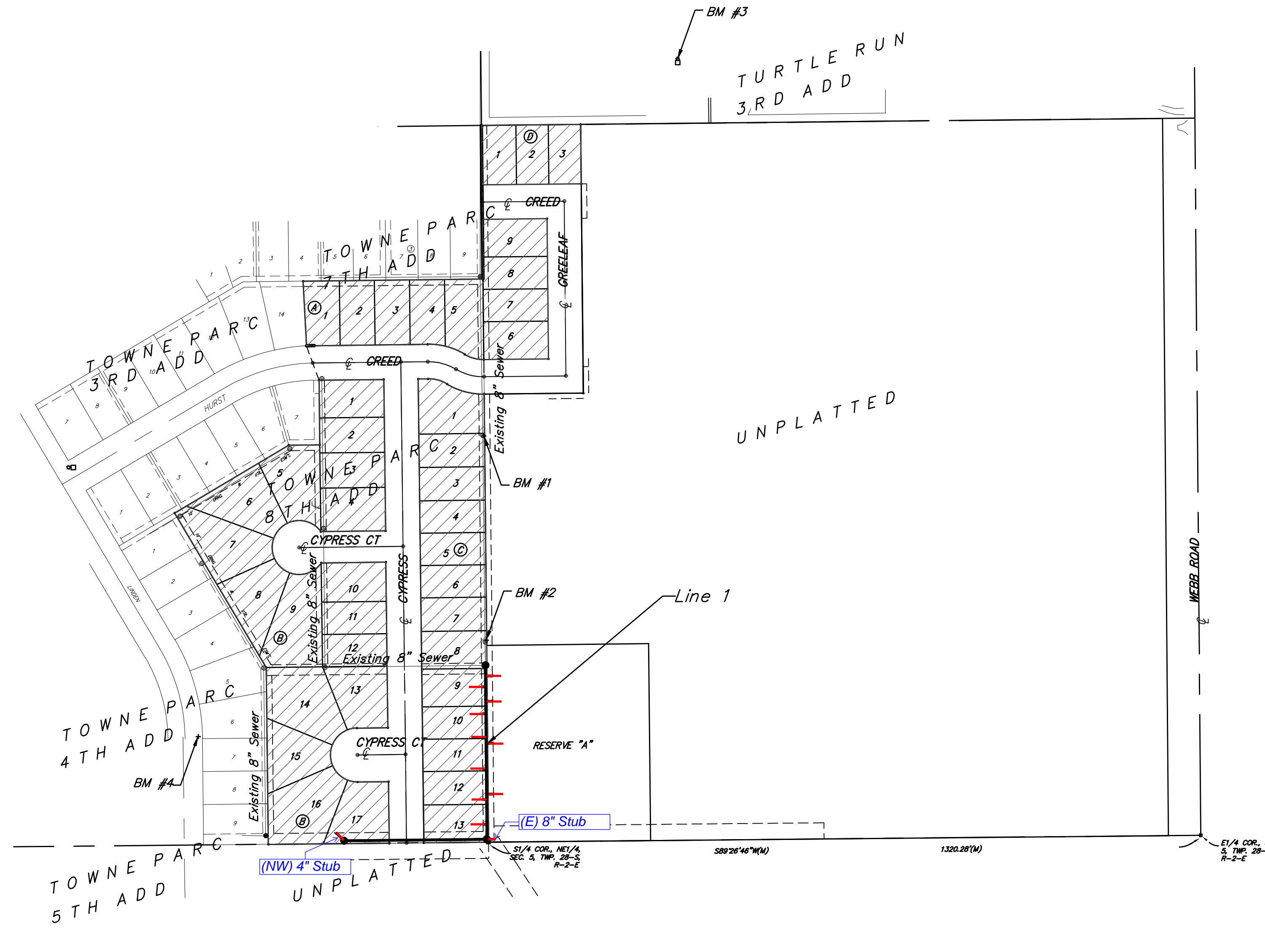
Project Built to plans



Vicinity Map

Sheet Index

Title Sheet	1
Line 1 & 2	2
Precast SS Manhole Detail	3
Manhole Frame & Cover Detail	4
Vertical Riser Detail	5
Erosion Control Plan	6
Erosion Control BMP Details	7-11
Coordinate Sheet	12
Copy of Towne Parc 8th Add Plat	13



BENEFIT DISTRICT AREA



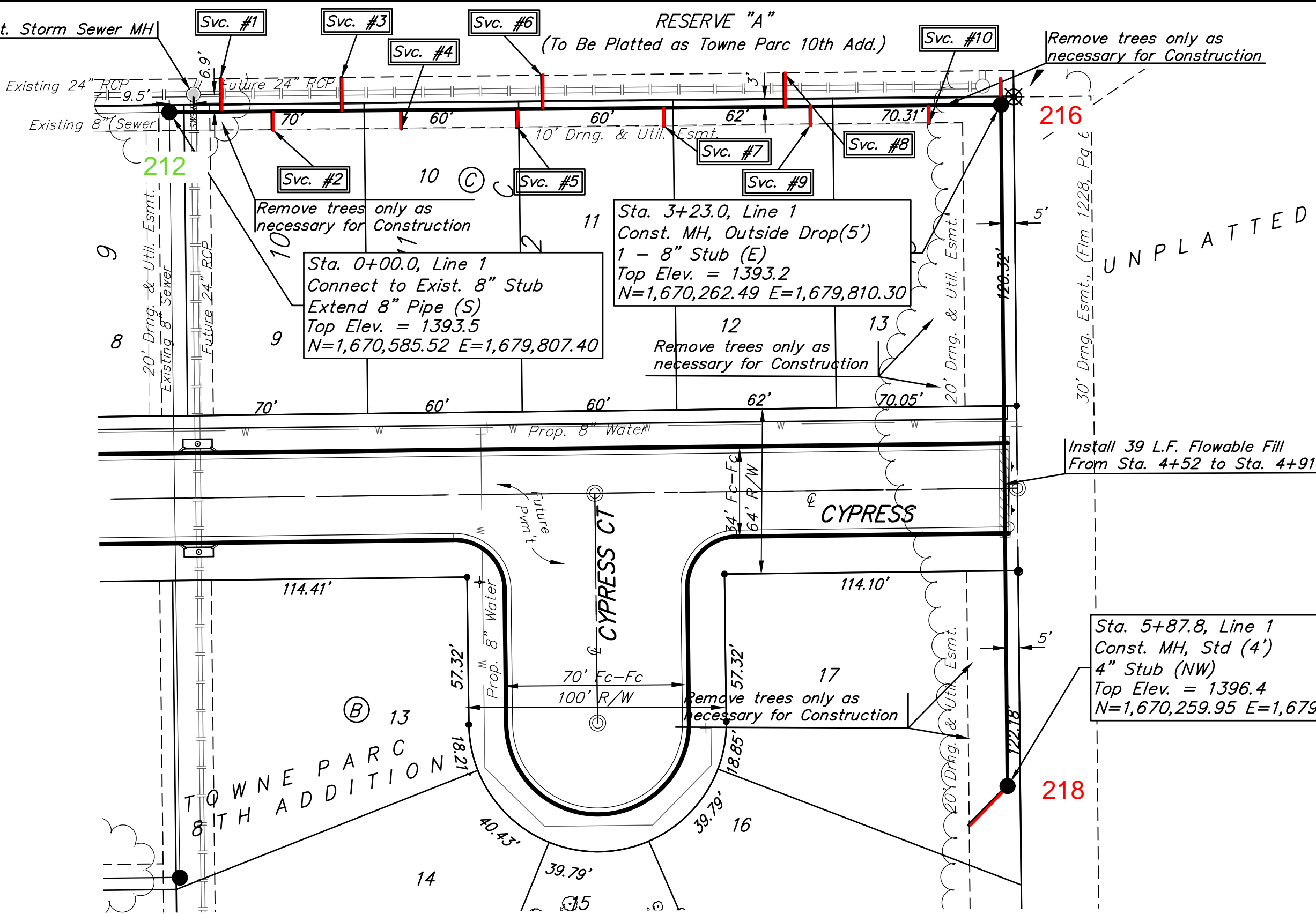
April 2022



Baughman Company, P.A. 315 Ellis St. Wichita, KS 67211 P 316-262-7271 F 316-262-0145
ENGINEERING | SURVEYING | PLANNING | LANDSCAPE ARCHITECTURE

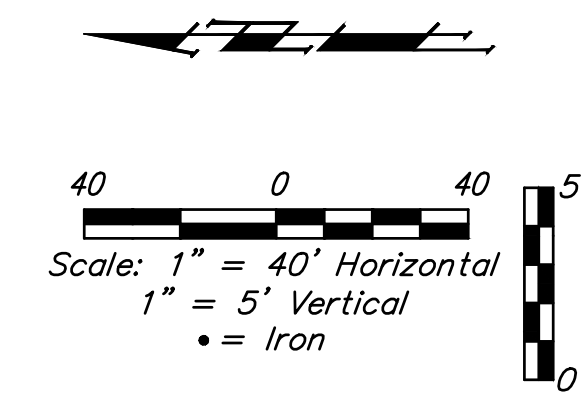
E:\Projects\Towne Parc 8th Addition_21-12-P732\Engineering\Phase I\SS\SS.dwg

BENCHMARKS:
 BM #1: "x" Cut on N. San. Sewer MH rim approx. 21.1' S. & 3' W of Lot 2, Block C, Towne Parc 8th Add. Elev. = 1399.12 NAVD88
 BM #2: "+" Cut on N. San. Sewer MH rim approx. 21.1' S. & 3' W of Lot 2, Block C, Towne Parc 8th Add. Elev. = 1393.99 NAVD88
 BM #3: "□" Cut on top of curb 16.7' N. of NE corner Lot 7, Block 2, Turtle Run 3rd Add. Elev. = 1390.32 NAVD88
 BM #4: "+" Cut on E. top of curb Adjacent to Lots 6 & 7, Block A, Towne Parc 4th Add. Elev. = 1397.86 NAVD88



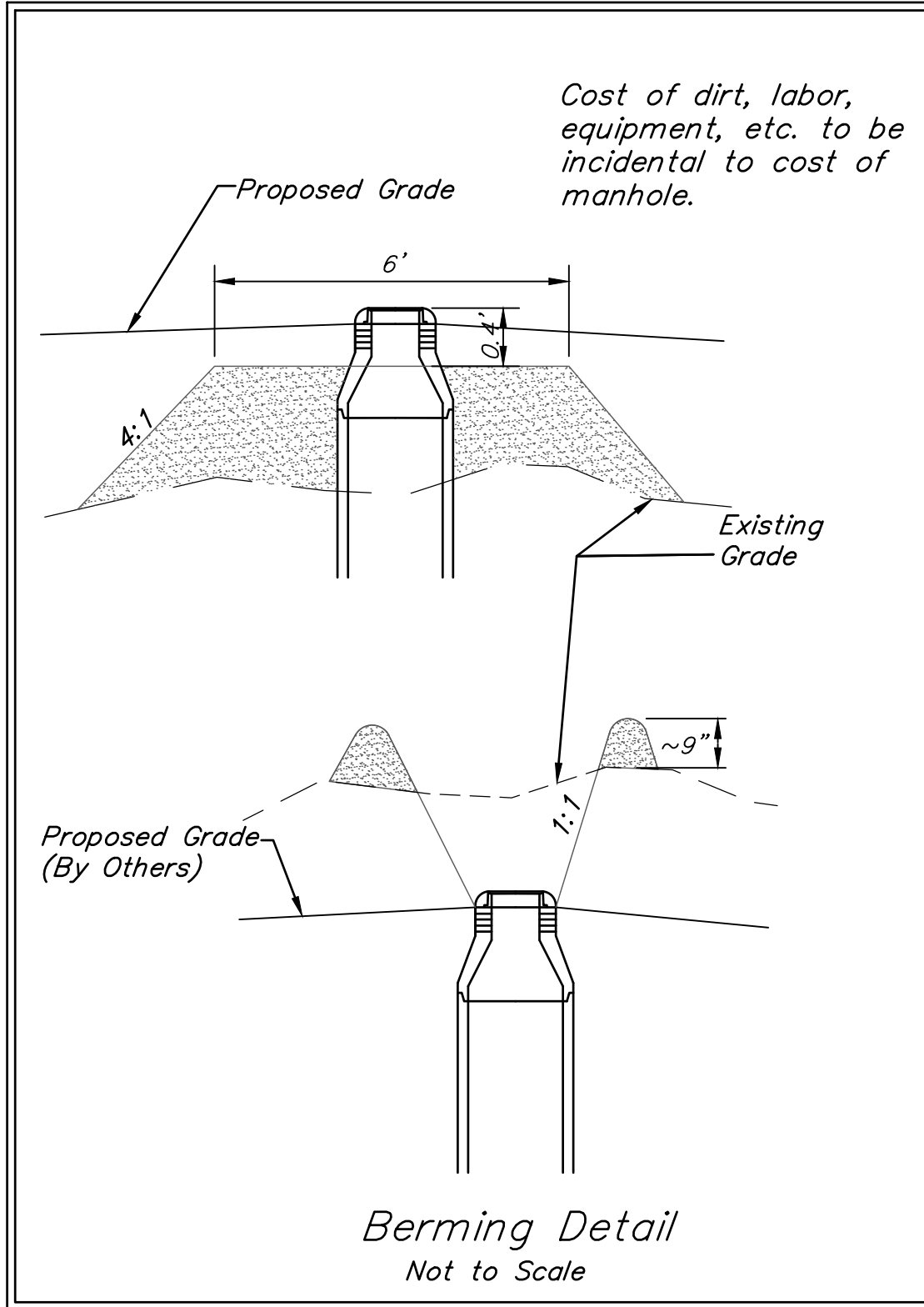
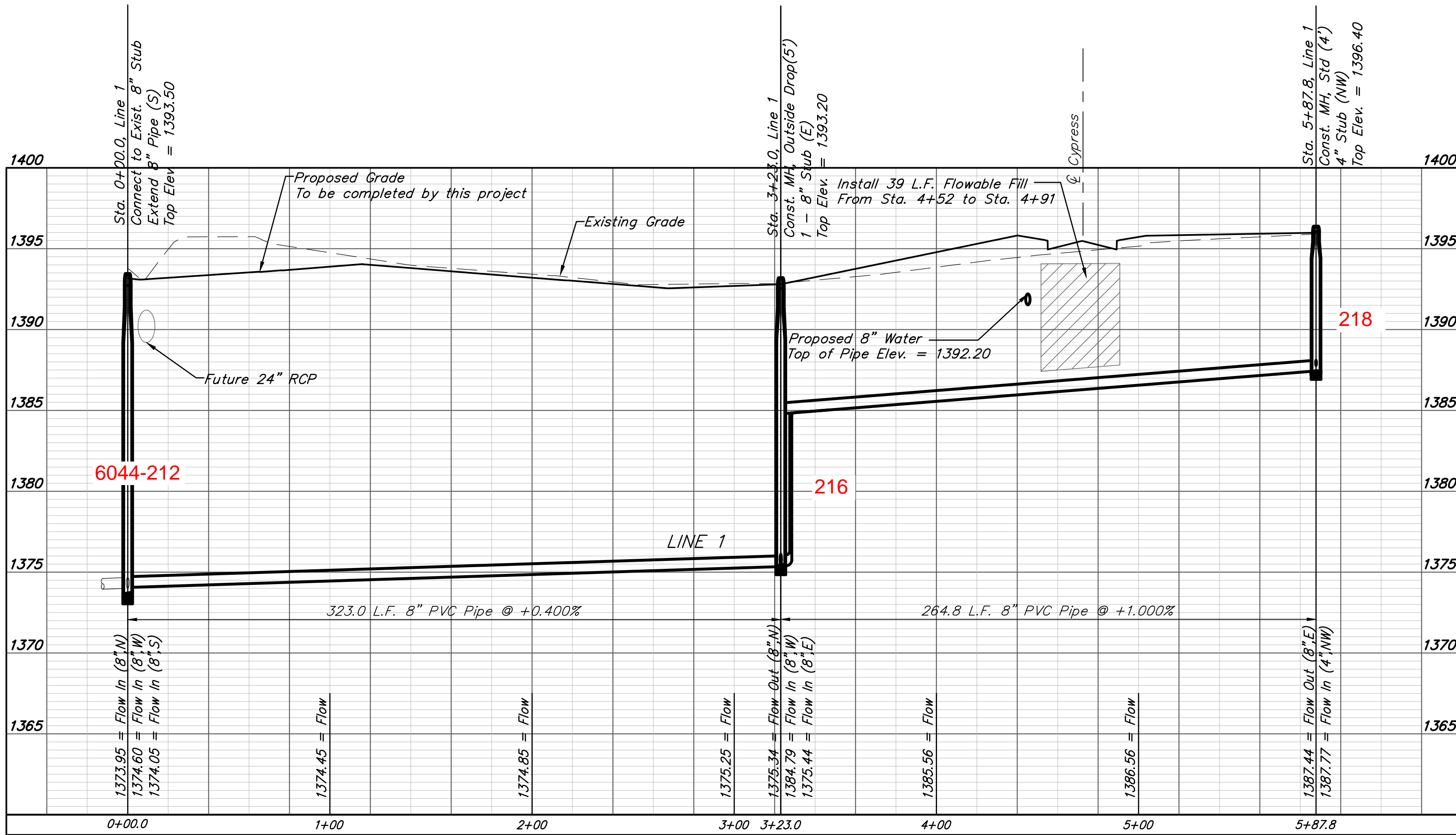
Distance from Main to Riser (L+R)	Distance from		NUMBER	TYPE	LOCATION			FLOWLINE		FOR INFORMATION ONLY		
	Upstream MH	Downstream MH			LOT NO.	BLOCK	LINE NO.	STATION/DIRECTION	8" PIPE	4" PIPE	APPROXIMATE LENGTH OF 4" PIPE	VERTICAL
13' Lt.	303'	20'	1	4" Vertical Riser Assy'	9	C	1	0+00.0/Lt.	1374.13	1374.56	16.8'	13.0'
7' Rt.	283'	40'	2	4" Vertical Riser Assy'	9	C	1	0+40.0/Rt.	1374.21	1374.52	16.8'	7.0'
13' Lt.	256'	67'	3	4" Vertical Riser Assy'	9	C	1	0+67.0/Lt.	1374.32	1374.74	16.5'	13.0'
7' Rt.	233'	90'	4	4" Vertical Riser Assy'	10	C	1	0+90.0/Rt.	1374.41	1374.72	16.3'	7.0'
7' Lt.	188'	135'	5	4" Vertical Riser Assy'	10	C	1	1+35.0/Lt.	1374.59	1374.90	15.7'	7.0'
13' Lt.	178'	145'	6	4" Vertical Riser Assy'	11	C	1	1+45.0/Lt.	1374.63	1375.06	15.4'	13.0'
7' Rt.	131'	192'	7	4" Vertical Riser Assy'	11	C	1	1+92.0/Rt.	1374.82	1375.12	16.1'	7.0'
13' Lt.	84'	239'	8	4" Vertical Riser Assy'	12	C	1	2+39.0/Lt.	1375.00	1375.43	15.8'	13.0'
7' Rt.	74'	249'	9	4" Vertical Riser Assy'	12	C	1	2+49.0/Rt.	1375.04	1375.35	15.9'	7.0'
7' Rt.	28'	295'	10	4" Vertical Riser Assy'	13	C	1	2+95.0/Rt.	1375.23	1375.53	15.7'	7.0'

NOTE: Vertical Riser Pipe shall be extended to 2' minimum above ground water elevation and 4' maximum below proposed ground elevation.



For manholes greater than 12' deep or in groundwater, joint wraps shall be required.
 12'-16' deep One wrap
 16'-18' deep Two wraps
 18'-20' deep Three wraps

Contractor shall verify elevation and alignment of existing sewer manhole prior to construction and notify Engineer of any discrepancy.



SANITARY SEWER

Point Table			
Point #	Northing	Easting	Description
8000	1670585.52	1679807.40	Sta. 0+00, Line 1-Exist MH
8001	1670262.49	1679810.30	Sta. 3+23, Line 1-Std MH
8002	1670259.95	1679545.57	Sta. 5+87.8, Line 1-Std MH

PROPERTY IRONS

Point Table			
Point #	Northing	Easting	Raw Description
7000	1670257.52	1679813.35	Prop_Iron
7001	1670256.40	1679693.31	Prop_Iron
7002	1670255.78	1679629.31	Prop_Iron
7003	1670253.60	1679405.21	Prop_Iron
7004	1670581.36	1679401.32	Prop_Iron
7005	1670867.75	1679231.54	Prop_Iron
7006	1670837.48	1679498.32	Prop_Iron
7007	1670838.91	1679618.32	Prop_Iron
7008	1670780.91	1679619.01	Prop_Iron
7009	1670779.49	1679499.01	Prop_Iron

