

GENERAL NOTES:

- Contractor will be required to provide notice to utility companies a minimum of seventy-two (72) hours prior to any excavation, as follows:
 - Kansas One-Call 687-2470
 - The Contractor must notify the following in case of an emergency:
 - Cox Communications 262-4270
 - Kansas Gas Service 1-888-482-4950
 - Evergy 383-8650
 - Aquila Energy 1-800-303-0357
 - AJT 268-2245
 - City of Wichita Water Dept. 268-4563
 - City of Wichita Sewer Maint. 268-4024
 - City of Wichita Storm Sewer Maint. 268-4090
 - City of Wichita Traffic Maint. 268-4034
 - Conoco Phillips Pipeline Co. 1-877-267-2290
 - Southern Star Pipeline Co. 529-6600
 - Kinder-Morgan Pipeline Co. 1-888-844-5658
- Utility service lines, poles, valve boxes, meters, and etcetera are to be adjusted as necessary by others prior to construction unless the plans specifically call for their adjustment by the Contractor or unless the plans specifically identify a utility to be adjusted by its owner during construction. Existing utilities and their location, as shown on the plans, represent the best information obtainable for design. The Contractor will be required to work around existing utilities within the right-of-way which do not conflict with proposed construction.
- Rubble from the removal of miscellaneous structures and excess excavation which is to be wasted shall be disposed of on sites to be provided by the Contractor. These sites shall be approved by the Engineer as to suitability, appearance and site location. Locations, in the opinion of the Engineer, that will leave an unsightly appearance will not be approved. All disposal sites must be approved by the Kansas Department of Health and Environment. Material either stockpiled or disposed of in a flood plain would require a Kansas State Board of Agriculture permit. Any material dumped in waters of the United States or wetlands is subject to U.S. Corps. of Engineers permitting regulations. Any material buried or stockpiled beyond approved construction limits would require additional archaeological investigations unless buried in a previously approved borrow location.
- Trees and shrubs in public right-of-way which are in direct conflict with proposed new construction shall be removed by the Contractor with the Engineer's approval. Trees and shrubs which are not in direct conflict with proposed new construction shall be saved and protected from damage.
- The Contractor shall give all property owners and/or tenants of developed property abutting the construction of this project a minimum of ten (10) days notice prior to start of construction.
- The Contractor shall be responsible for preserving property irons. The Contractor will be required to re-establish any property irons which are damaged or destroyed by his construction operations. Such irons shall be re-established by a licensed land surveyor in accordance with state laws.
- All existing and proposed erosion control measures including silt fencing, erosion control mat, straw bales, inlet barriers, and const. entrance shall be maintained throughout construction by the contractor and until project is accepted by the City of Wichita. The on-site engineer shall complete weekly reports on the status of erosion control measures. The contractor shall be required to comply with maintenance and/or replacement of erosion control measures as determined by the on-site engineer until project is accepted by City of Wichita. Maintenance and/or replacement of erosion control measures to be paid by L.S. bid item "Maintain Existing BMP's."
- All excess excavation shall remain on-site and shall be stockpiled or spread at a location determined by the engineer.
- All areas disturbed during construction shall be seeded as follows (Temporary Seeding):
 - Seed: Rye grass (PLS)--5 lbs./1000 Sq. Ft.
 - All costs associated with seeding shall be included in bid item "Seeding".
- Trees and shrubs in the work area which are in direct conflict with proposed new construction shall be removed by the Contractor ONLY with the Developer or Baughman Company approval. Trees and shrubs which are not in direct conflict with proposed new construction shall be saved and protected from damage. If trimming is necessary, a chainsaw shall be used. Breaking limbs with equipment will not be allowed. An on-site pre-construction meeting will occur prior to any construction to discuss tree removal, tree protection, and tree trimming.
- Maintain a minimum of 10-foot horizontal separation between all Water lines (Mains, Services and Fire Hydrants) and all Sanitary Sewer lines (Main, Services and Manholes) at crossings. All separation distances are to be measured from edge-to-edge, at the closest point.
- Maintain a minimum of 2-foot vertical separation between all Water lines (Main and Services) and all gravity Sanitary Sewer lines (Mains, Services and Manholes) at crossings. All separation distances are to be measured from edge-to-edge, at the closest point.
- Maintain a minimum of 2-foot vertical separation between all Water lines (Main and Services) and all pressurized Sanitary Sewer lines (Force Main and Services) at crossings. Water lines must always be placed above pressurized Sanitary Sewer lines where they cross. All separation distances are to be measured from edge-to-edge, at the closest point.

Benchmarks

BENCHMARKS:
 CUT OFF "T"-POST, DOWN 0.25'
 13.5' WEST OF POWER POLE
 30' SOUTH OF FIRE HYDRANT
 +/- 200' SOUTH OF
 CENTERLINE DRIVE TO HOUSE #
 2816 S MAIZE RD.
 ELEV. = 1328.386 (NAVD 88)

**SQUARE CUT WITH + IN SW
 WINGWALL OF THE
 SOUTHERNMOST OF THREE
 CONCRETE DITCH CHECKS
 +/- 1125' WEST OF
 CENTERLINE S. MAIZE RD,
 BEHIND HOUSE #2951 S MAIZE
 RD.
 ELEV. = 1332.383 (NAVD88)**

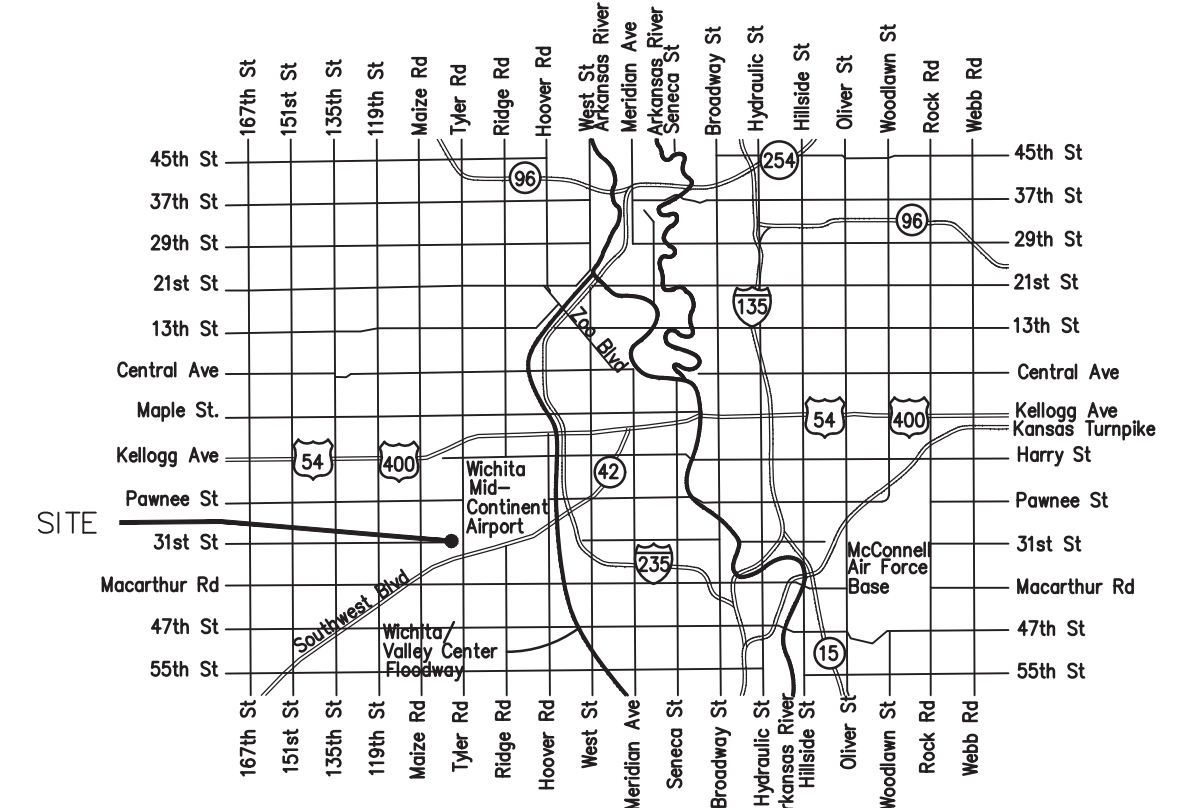
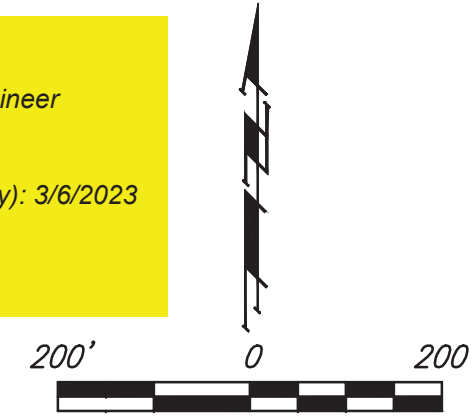
CIS-11
 4744B

Phase III SANITARY SEWER MAIN IMPROVEMENTS to serve **SCHULTE JOHNSON 2ND ADDITION** CITY OF WICHITA, KANSAS

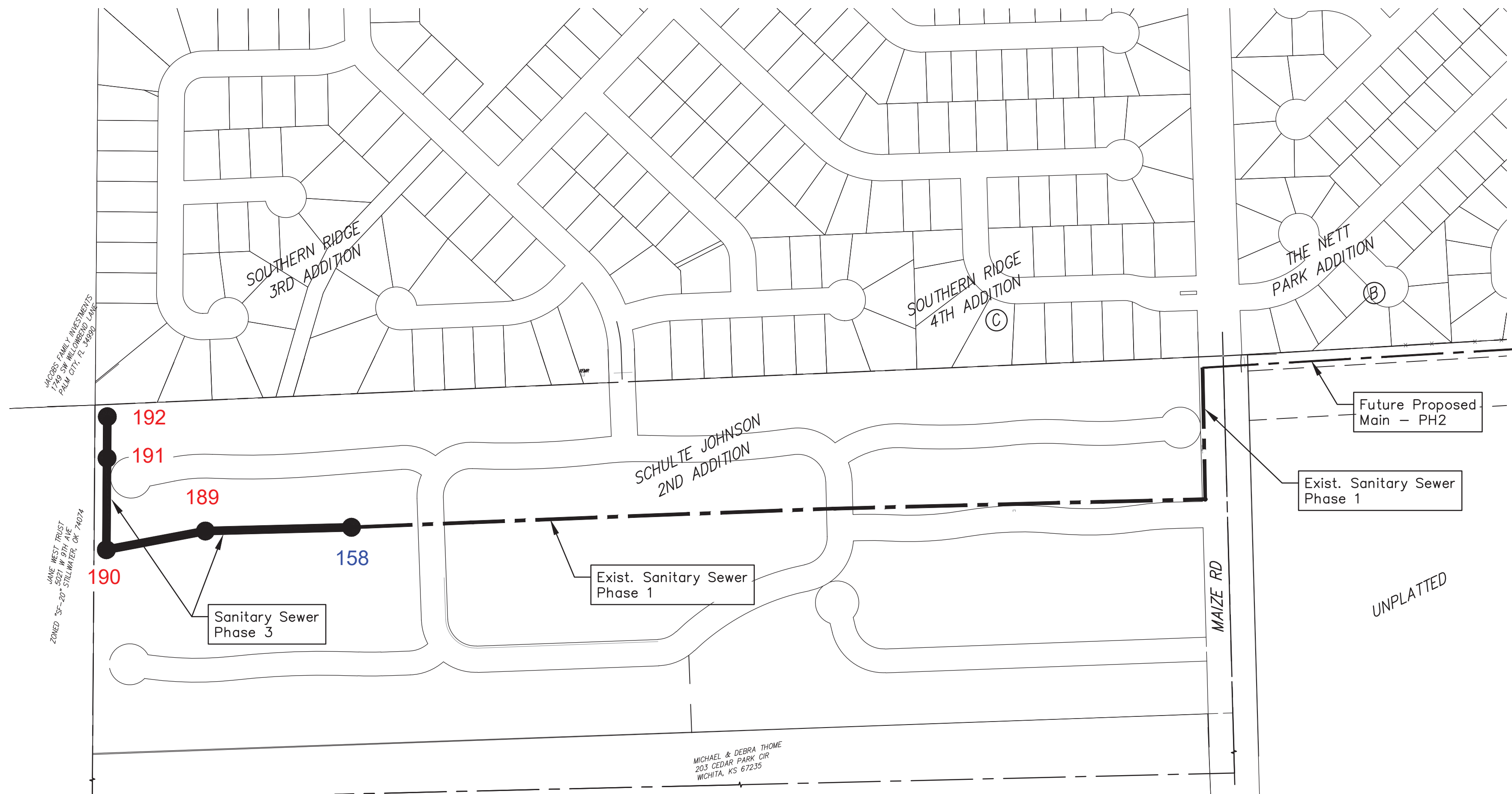
Gary Janzen, P.E. City Engineer
 Project Number 468-2022-009660
 ORG Code Number: 53200120
 Munis Number: S0028

McCullough Excavation - Contractor
 S. Lowe - City of Wichita, Field Project Engineer
 As-built
 Stubs
 Release Date (for connection purposes only): 3/6/2023
 Completion Date:
 pdf: apr 3/6/2023

BUILT PER PLAN



Vicinity Map



Sheet Index

Title Sheet	1
Precast SS Manhole Detail	2
Manhole Frame & Cover Detail	3
Line 1 Plan and Profile	4-6
Erosion Control Plan	7
Erosion Control BMP Details	8-12
Coordinate Sheet	13
Copy of Plat	14

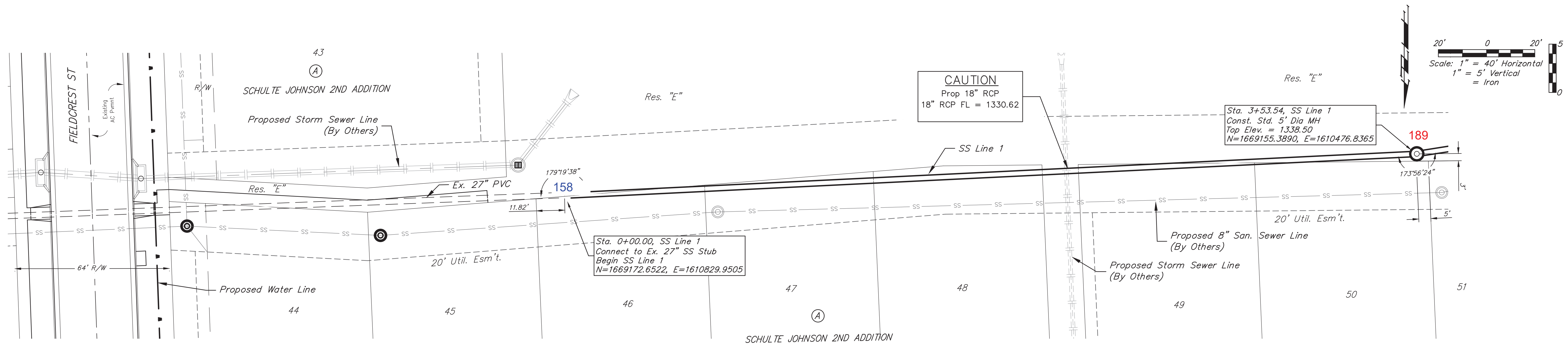
*Current Sanitary Sewer Control Details are available at City of Wichita web site at <http://www.wichita.gov/PWU/StandardsConstruction/Forms/WebPageStandardsConstruction.aspx>



6 April 2022



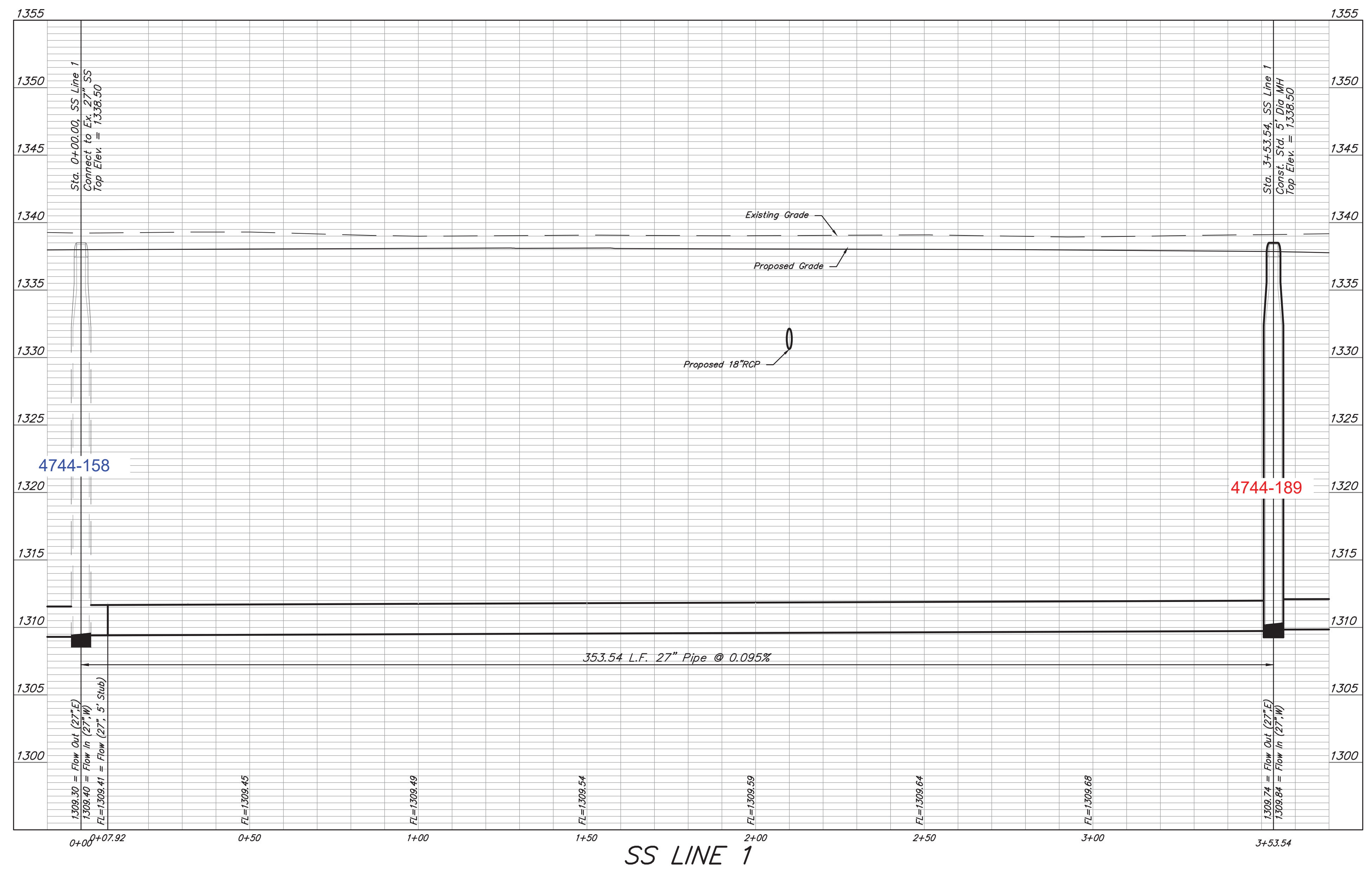
Baughman Company, P.A. 315 Ellis St. Wichita, KS 67211 P 316-262-7271 F 316-262-0145
 ENGINEERING | SURVEYING | PLANNING | LANDSCAPE ARCHITECTURE



Benchmarks

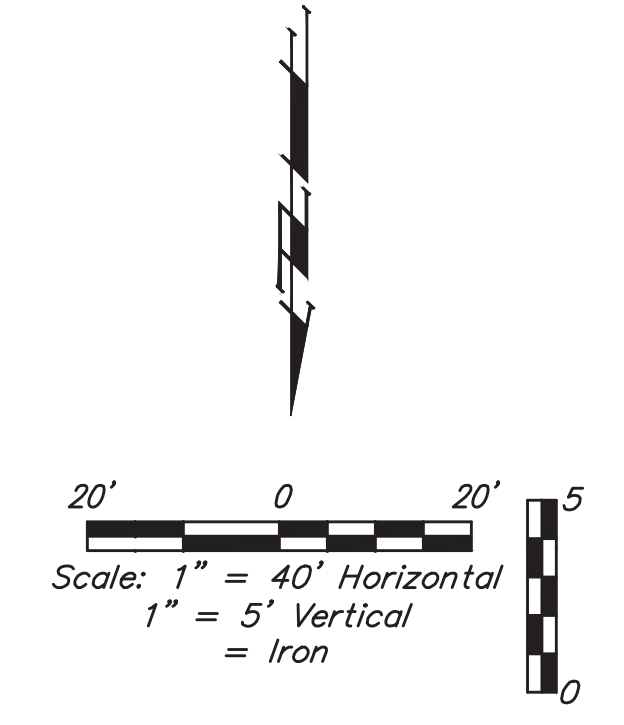
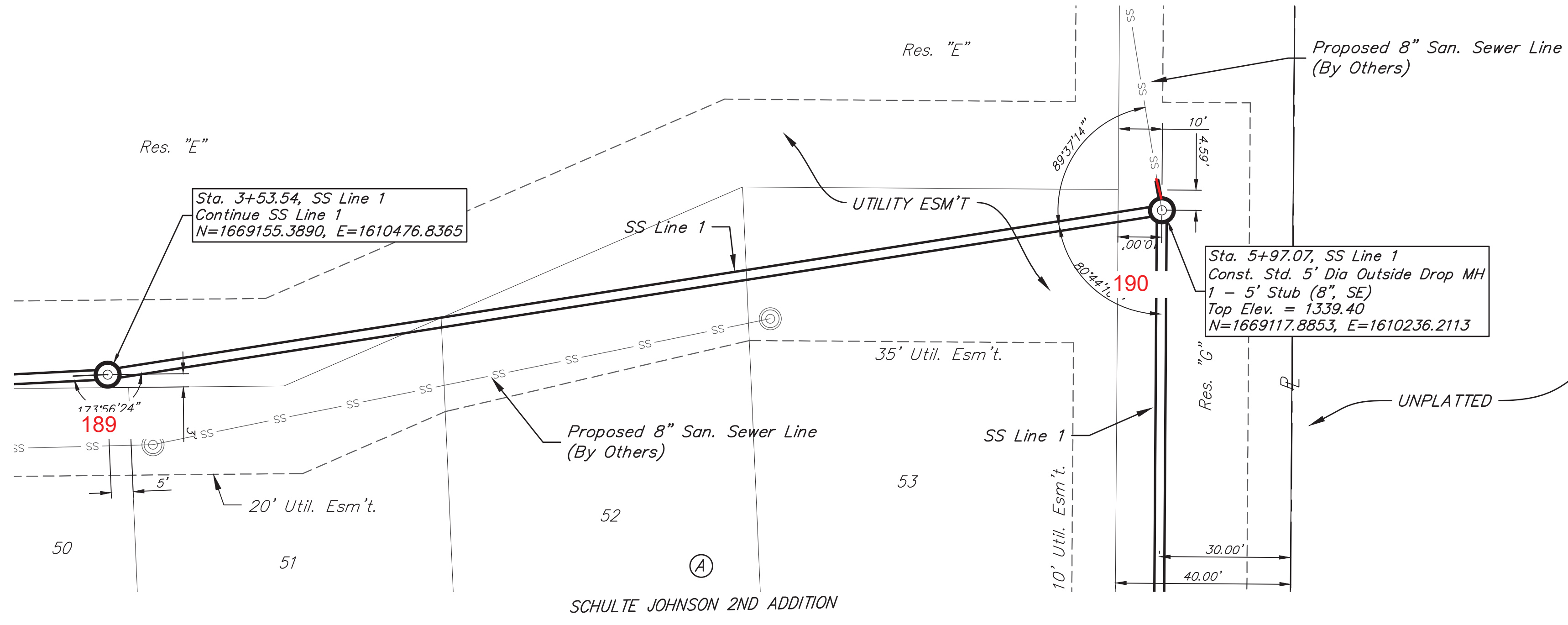
BENCHMARKS:
 CUT OFF "T"-POST, DOWN 0.25'
 13.5' WEST OF POWER POLE
 30' SOUTH OF FIRE HYDRANT
 +/- 200' SOUTH OF
 CENTERLINE DRIVE TO HOUSE #
 2816 S MAIZE RD.
 ELEV. = 1328.386 (NAVD 88)

SQUARE CUT WITH + IN SW
 WINGWALL OF THE
 SOUTHERNMOST OF THREE
 CONCRETE DITCH CHECKS
 +/- 1125' WEST OF
 CENTERLINE S. MAIZE RD,
 BEHIND HOUSE #2951 S MAIZE
 RD.
 ELEV. = 1332.383 (NAVD88)



Baughman Company, P.A.
 BREN WOODLEY
 8470
 04/06/2022
 KANSAS
 PROFESSIONAL ENGINEER

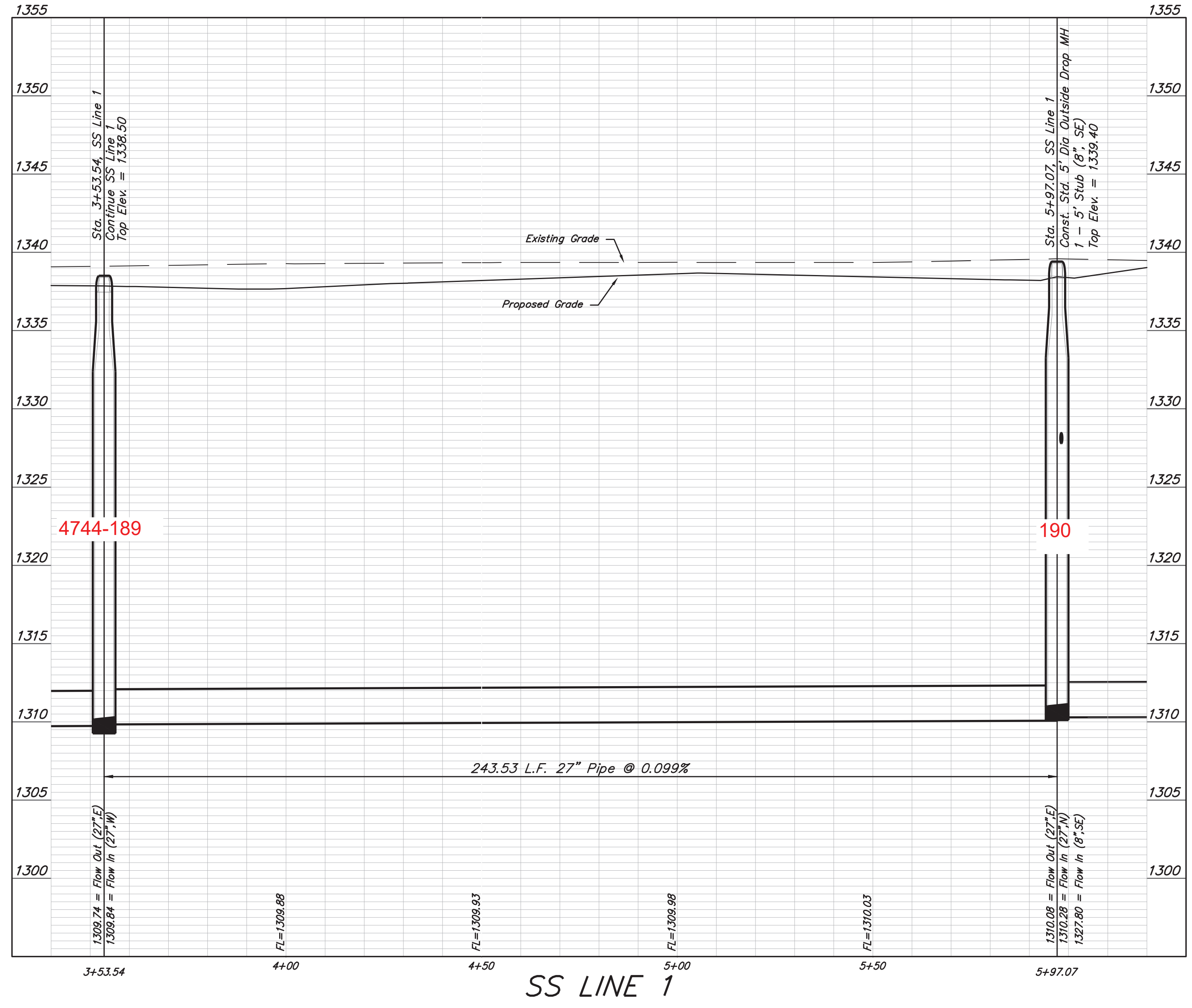
Schulte-Johnson 2nd Addition
SS LINE 1
 Sanitary Sewer Line Improvements

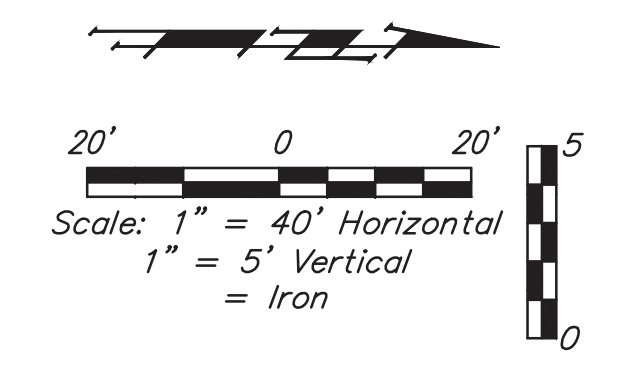
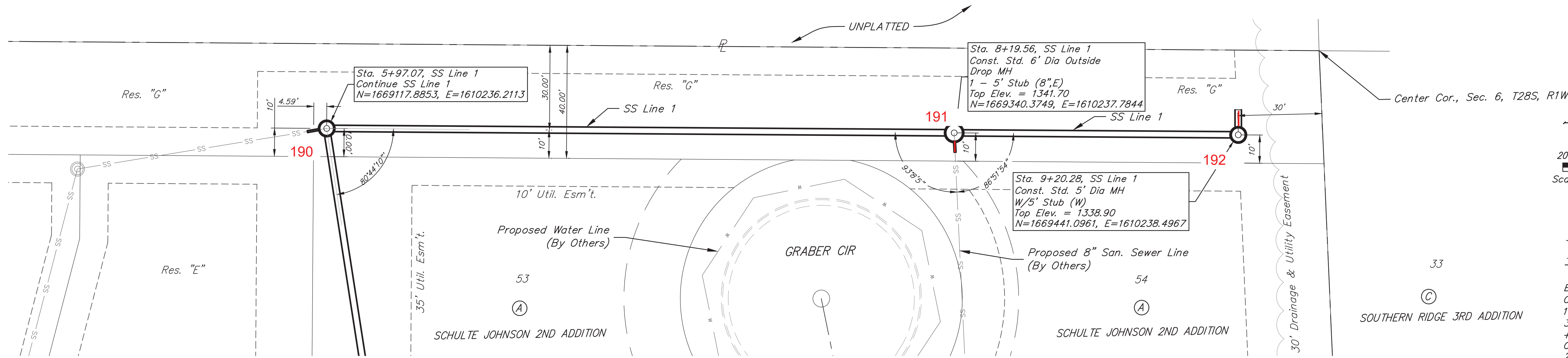


Benchmarks

BENCHMARKS:
 CUT OFF "T"-POST, DOWN 0.25'
 13.5' WEST OF POWER POLE
 30' SOUTH OF FIRE HYDRANT
 +/- 200' SOUTH OF
 CENTERLINE DRIVE TO HOUSE #
 2816 S MAIZE RD.
 ELEV. = 1328.386 (NAVD 88)

SQUARE CUT WITH + IN SW
 WINGWALL OF THE
 SOUTHERNMOST OF THREE
 CONCRETE DITCH CHECKS
 +/- 1125' WEST OF
 CENTERLINE S. MAIZE RD.
 BEHIND HOUSE #2951 S MAIZE
 RD.
 ELEV. = 1332.383 (NAVD88)

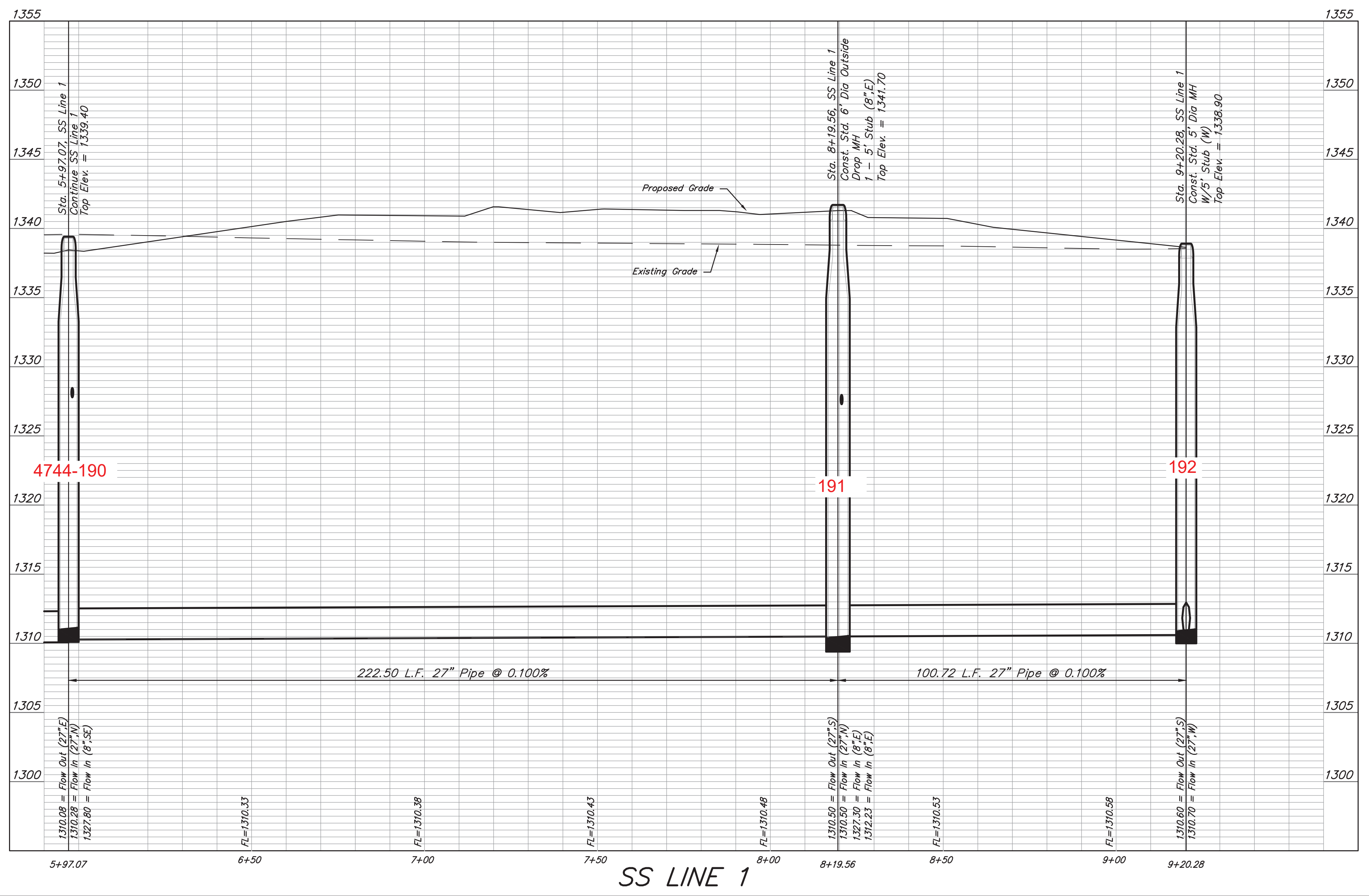




Benchmarks

BENCHMARKS:
 CUT OFF "T"-POST, DOWN 0.25'
 13.5' WEST OF POWER POLE
 30' SOUTH OF FIRE HYDRANT
 +/- 200' SOUTH OF
 CENTERLINE DRIVE TO HOUSE #
 2816 S MAIZE RD.
 ELEV. = 1328.386 (NAVD 88)

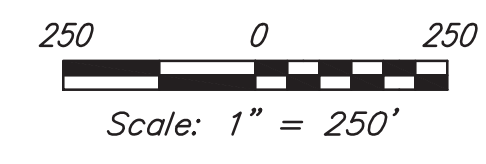
SQUARE CUT WITH + IN SW
 WINGWALL OF THE
 SOUTHERNMOST OF THREE
 CONCRETE DITCH CHECKS
 +/- 1125' WEST OF
 CENTERLINE S. MAIZE RD,
 BEHIND HOUSE #2951 S MAIZE
 RD.
 ELEV. = 1332.383 (NAVD88)





Benchmarks

BENCHMARKS:
 CUT OFF "T"-POST, DOWN 0.25'
 13.5' WEST OF POWER POLE
 30' SOUTH OF FIRE HYDRANT
 +/- 200' SOUTH OF
 CENTERLINE DRIVE TO HOUSE #
 2816 S MAIZE RD.
 ELEV. = 1328.386 (NAVD88)



SQUARE CUT WITH + IN SW
 WINGWALL OF THE
 SOUTHERNMOST OF THREE
 CONCRETE DITCH CHECKS
 +/- 1125' WEST OF
 CENTERLINE S. MAIZE RD,
 BEHIND HOUSE #2951 S MAIZE
 RD.
 ELEV. = 1332.383 (NAVD88)

Point Table

Point #	Northing	Easting	Latitude	Longitude	Raw Description
1	1669588.93	1612950.51	N37° 38' 35.57"	W97° 27' 42.18"	NW COR. SW 1/4 SEC. 5, T28S, R1W
2	1669737.95	1615517.05	N37° 38' 36.76"	W97° 27' 10.25"	CNTR SEC. 5, T28S, R1W
3	1669809.83	1618020.04	N37° 38' 37.19"	W97° 26' 39.12"	NE COR. SE1/4 SEC 5, T28S, R1W
4	1669570.90	1616277.28	N37° 38' 35.02"	W97° 27' 00.82"	MAG DISC
5	1666956.56	1613021.91	N37° 38' 09.53"	W97° 27' 41.66"	SE COR. SW1/4 SEC. 5, T28S, R1W

Point Table

Point #	Northing	Easting	Latitude	Longitude	Raw Description
8029	1669172.65	1610829.95	N37° 38' 31.68"	W97° 28' 08.60"	SS MH
8030	1669155.39	1610476.84	N37° 38' 31.55"	W97° 28' 12.99"	SS MH
8031	1669117.89	1610236.21	N37° 38' 31.21"	W97° 28' 15.99"	SS MH
8032	1669340.37	1610237.78	N37° 38' 33.41"	W97° 28' 15.94"	SS MH
8033	1669441.10	1610238.50	N37° 38' 34.40"	W97° 28' 15.92"	SS MH



Baughman Company, P.A.
 1100 S. W. 10th Street, Suite 100
 Oklahoma City, Oklahoma 73106
 Phone: (405) 941-1100
 Fax: (405) 941-1101
 www.baughmanpa.com

COORDINATES
 Schulte-Johnson 2nd Addition
 Sanitary Sewer Line Improvements