

BENCHMARKS:

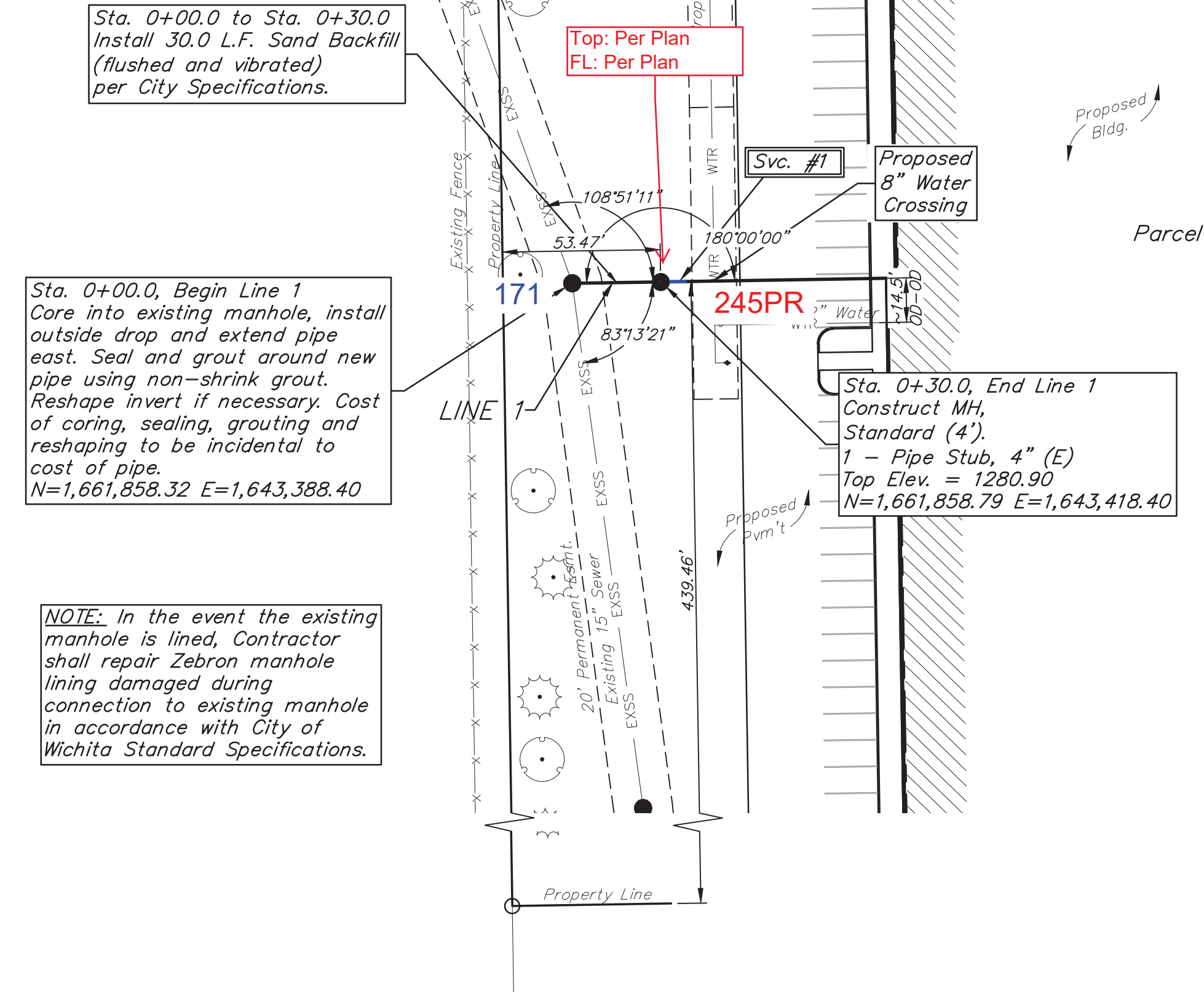
BM #1: "X" chiseled on top of concrete sidewalk, approximately 13.3' west and 11.7' north of the northeast corner of Parcel 1. Elevation = 1278.78 (NAVD 88)

BM #2: "X" chiseled on top of concrete sidewalk, approximately 22.3' south and 49' west of the NE section corner of section 18, township 28 S, range 1 east. Elevation = 1278.94 (NAVD 88)

SEWER SERVICE TABLE

NUMBER	TYPE	LOCATION			STATION \ DIRECTION	FOR INFORMATION ONLY	
		LOT NO.	BLOCK NO.	LINE NO.		APPROXIMATE LENGTH 4" PIPE	VERTICAL
1	4" Stub	Parcel C		1	0+30.0	-	-

NOTE: Vertical Riser Pipe shall be extended to 2' minimum above ground water elevation and 4' maximum below proposed ground elevation.

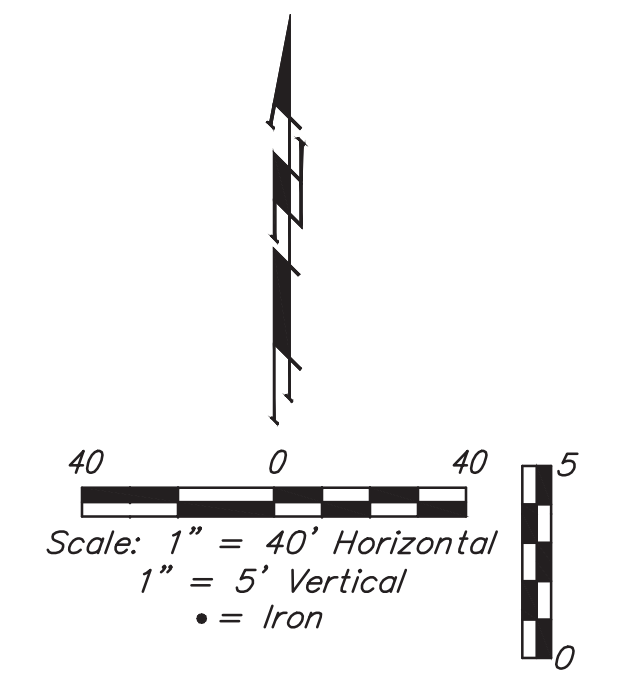


Sta. 0+00.0 to Sta. 0+30.0
Install 30.0 L.F. Sand Backfill
(flushed and vibrated)
per City Specifications.

Sta. 0+00.0, Begin Line 1
Core into existing manhole, install
outside drop and extend pipe
east. Seal and grout around new
pipe using non-shrink grout.
Reshape invert if necessary. Cost
of coring, sealing, grouting and
reshaping to be incidental to
cost of pipe.
N=1,661,858.32 E=1,643,388.40

NOTE: In the event the existing
manhole is lined, Contractor
shall repair Zebtron manhole
lining damaged during
connection to existing manhole
in accordance with City of
Wichita Standard Specifications.

Sta. 0+30.0, End Line 1
Construct MH,
Standard (4').
1 - Pipe Stub, 4" (E)
Top Elev. = 1280.90
N=1,661,858.79 E=1,643,418.40

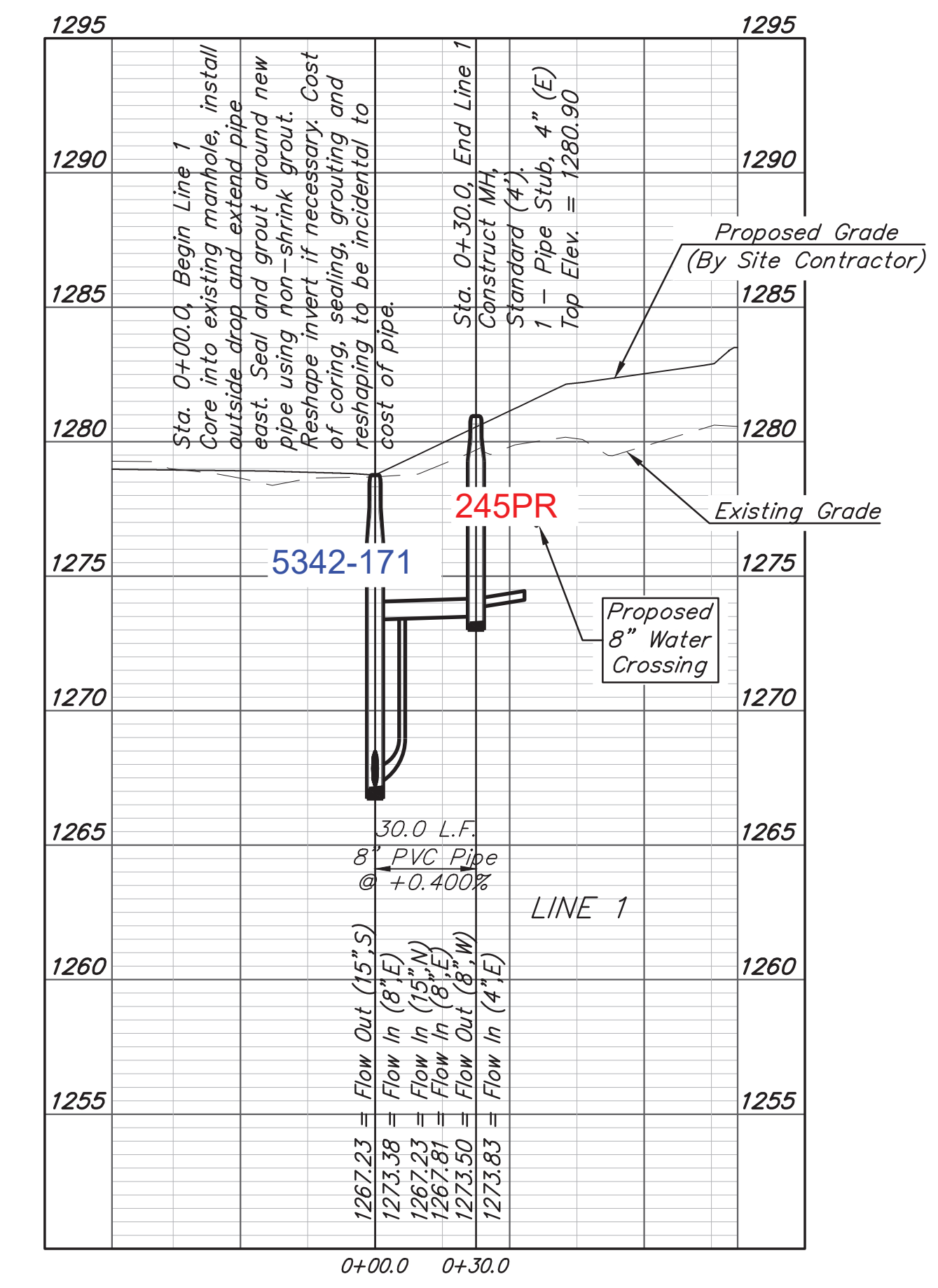


Contractor to verify depth and
location of existing utilities.
Contractor to relocate any
existing utilities as necessary
for construction.

City Maintenance of
sanitary sewer mains
ends at last structure
within easement or
right-of-way line.

AS BUILTS

KEMILLER
ENGINEERING PA
117 E. Lewis,
Wichita, KS 67202 (316)264-0242



Contractor shall verify
elevation and location of
existing manhole prior to
construction and notify
Engineer of any discrepancy.

BAUGHMAN COMPANY
315 Ellis St.
Wichita, KS 67211
316-262-7271
BaughmanCo.com

IRON HORSE
MANUFACTURING

LINE 1

SANITARY SEWER
IMPROVEMENTS

PROJECT NUMBER:
22-09-E292

DESIGN: TJW DRAWN: TMS
DATE: January 20, 2023

SHEET OF
2 10