

# CITY OF WICHITA

GARY JANZEN, P.E. - CITY ENGINEER

## CONSTRUCTION PLANS FOR SANITARY SEWER IMPROVEMENTS

TO SERVE

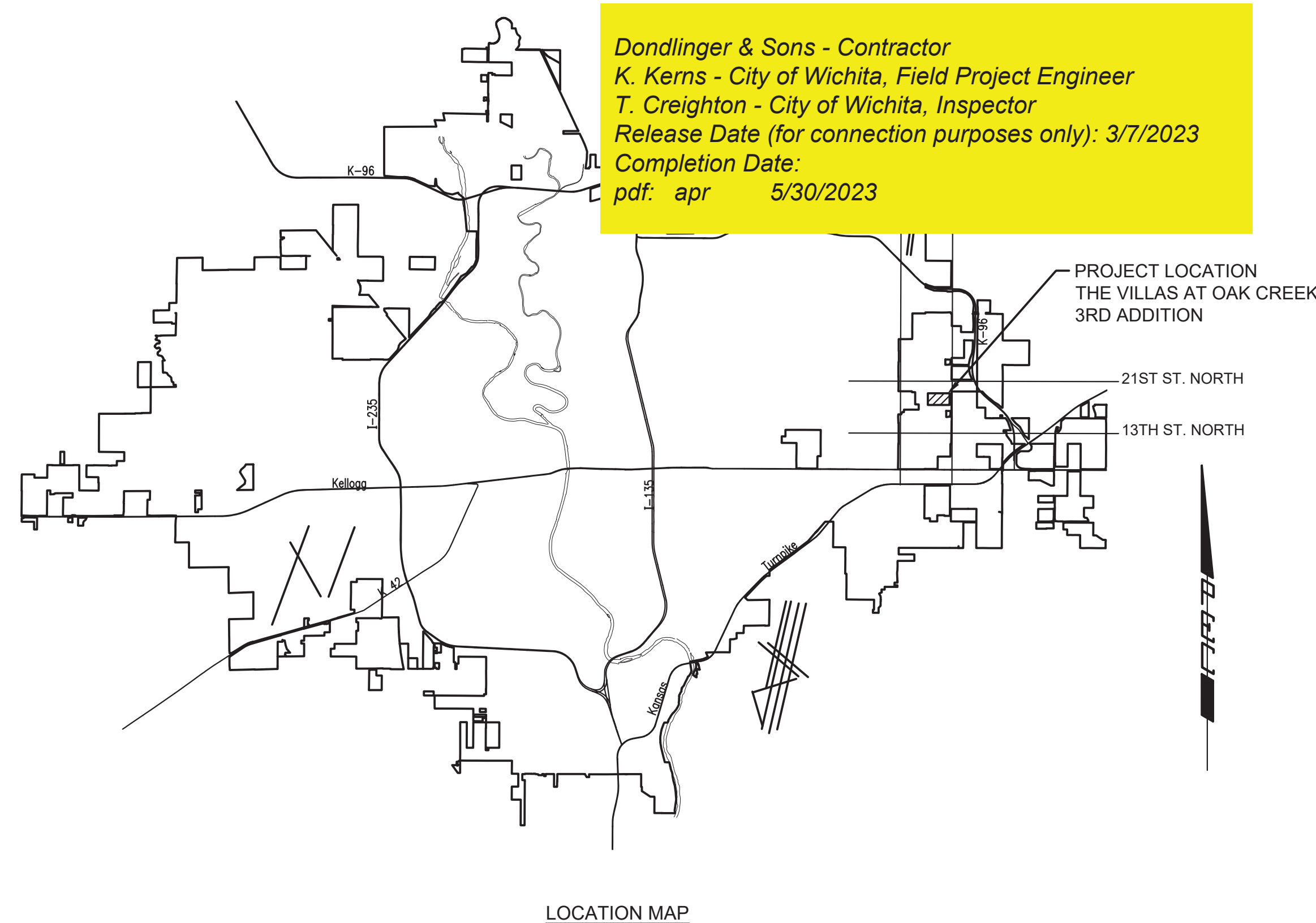
### THE VILLAS AT OAK CREEK 3RD ADDITION

CITY OF WICHITA ENGINEERING PROJECT NO. 468-2022-021574  
 ORG CODE 47266622  
 MUNIS NO. E2062

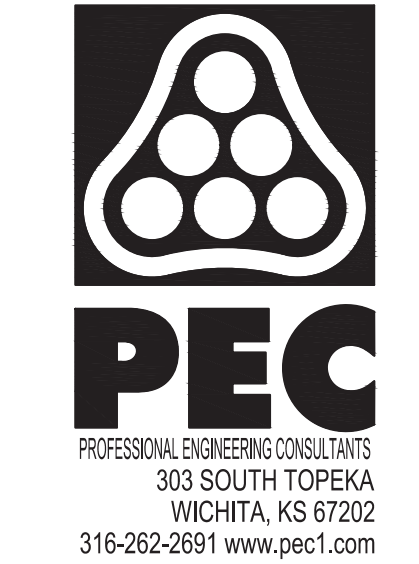
6149 A  
 WIS-07

DEVELOPER CONTACT  
 MR. BUTCH NUSS  
 SLAWSON COMPANIES  
 727 N. WACO, SUITE 400  
 WICHITA, KANSAS 67203  
 (316) 263-3201

*Dondlinger & Sons - Contractor*  
*K. Kerns - City of Wichita, Field Project Engineer*  
*T. Creighton - City of Wichita, Inspector*  
 Release Date (for connection purposes only): 3/7/2023  
 Completion Date:  
 pdf: apr 5/30/2023



SHEET NUMBER	SHEET TITLE
C-001	SANITARY SEWER TITLE SHEET
C-002	GENERAL NOTES
C-003	PLAT BUBBLE MAP
CU101	SANITARY SEWER BUBBLE MAP
CU102	SANITARY SEWER LINE NO. 1
CU103	SANITARY SEWER LINE NO. 1
CU104	SANITARY SEWER LINE NO. 2
CU105	SANITARY SEWER LINE NO. 3
CU106	SANITARY SEWER LINE NO. 4
CU107	SANITARY SEWER LINE NO 5
CU501	PRECAST SANITARY SEWER MANHOLE
CU502	MANHOLE FRAME AND COVER DETAILS (SANITARY SEWER)
CU503	VERTICAL RISER ASSEMBLY SEWER DETAIL
CU504	EROSION CONTROL PLAN
CU505	EROSION CONTROL DETAILS
CU506	EROSION CONTROL DETAILS
CU507	EROSION CONTROL DETAILS
CU508	EROSION CONTROL DETAILS
CU509	EROSION CONTROL DETAILS
CU510	COPY OF PLAT - THE VILLAS AT OAK CREEK



SANITARY SEWER IMPROVEMENTS  
 TO SERVE  
 THE VILLAS AT  
 OAK CREEK 3RD ADDITION  
 GARY JANZEN, P.E. - CITY ENGINEER  
 CITY OF WICHITA ENGINEERING PROJECT NO.  
 468-2022-021574

JOB NO.	210524-002-0042
DATE	AUGUST 2022
PM	TBK
DESIGNED BY	SNW
DRAWN BY	DMS
CHECKED BY	TBK

SANITARY SEWER  
 TITLE SHEET

C-001  
 1 OF 20

SEPTEMBER 2022

SAVED 9/9/2022 8:22:07 AM BY KURTIS DEKAT  
 PLOTTED 9/9/2022 3:39:38 PM BY KURTIS DEKAT  
 U:\WICHITA-CIVIL\2021\210524\002\PEC\DRAWINGS\210524-002-C-001.DWG



SANITARY SEWER LINE NO. 1			
STRUCTURE TABLE			
ID	STATION	COORDINATES	DESCRIPTION
Existing MH	10+00.0 SS LINE NO. 1	N: 384,938.3427 E: 2,372,652.2936	4' DIAMETER MANHOLE
MH 1	11+43.0 SS LINE NO. 1	N: 384,951.9166 E: 2,372,509.8973	5' DIAMETER MANHOLE
MH 2	12+67.2 SS LINE NO. 1	N: 384,989.1279 E: 2,372,391.4543	5' DIAMETER MANHOLE
MH 3	14+87.1 SS LINE NO. 1	N: 385,105.6052 E: 2,372,204.9419	5' DIAMETER MANHOLE
MH 4	15+64.8 SS LINE NO. 1	N: 385,027.9192 E: 2,372,206.4158	5' DIAMETER OUTSIDE DROP MANHOLE
MH 5	17+38.7 SS LINE NO. 1	N: 385,024.6194 E: 2,372,032.4953	5' DIAMETER MANHOLE
MH 6	19+87.1 SS LINE NO. 1	N: 385,189.3196 E: 2,371,846.5800	5' DIAMETER OUTSIDE DROP MANHOLE
MH 16	21+15.5 SS LINE NO. 1	N: 385,301.7043 E: 2,371,908.6453	5' DIAMETER MANHOLE

SANITARY SEWER LINE NO. 2			
STRUCTURE TABLE			
ID	STATION	COORDINATES	DESCRIPTION
MH 6	19+87.1 SS LINE NO. 1	N: 385,189.3196 E: 2,371,846.5800	5' DIAMETER OUTSIDE DROP MANHOLE
MH 7	10+47.1 SS LINE NO. 2	N: 385,148.7673 E: 2,371,822.6493	5' DIAMETER MANHOLE
MH 8	12+57.1 SS LINE NO. 2	N: 385,224.9202 E: 2,371,627.0053	5' DIAMETER MANHOLE
MH 9	13+24.5 SS LINE NO. 2	N: 385,159.9935 E: 2,371,608.7197	5' DIAMETER MANHOLE
MH 10	15+11.3 SS LINE NO. 2	N: 384,974.7909 E: 2,371,632.3583	5' DIAMETER MANHOLE
MH 11	16+97.8 SS LINE NO. 2	N: 384,789.0122 E: 2,371,615.1226	5' DIAMETER MANHOLE

SANITARY SEWER LINE NO. 4			
STRUCTURE TABLE			
ID	STATION	COORDINATES	DESCRIPTION
MH 7	10+47.1 SS LINE NO. 2	N: 385,148.7673 E: 2,371,822.6493	5' DIAMETER MANHOLE
MH 13	12+17.3 SS LINE NO. 4	N: 384,931.4992 E: 2,371,825.1756	5' DIAMETER MANHOLE
MH 14	14+01.2 SS LINE NO. 4	N: 384,747.6176 E: 2,371,828.5699	4' DIAMETER MANHOLE

SANITARY SEWER LINE NO. 3			
STRUCTURE TABLE			
ID	STATION	COORDINATES	DESCRIPTION
MH 4	15+64.8 SS LINE NO. 1	N: 385,027.9192 E: 2,372,206.4158	5' DIAMETER OUTSIDE DROP MANHOLE
MH 12	12+73.1 SS LINE NO. 3	N: 384,754.8848 E: 2,372,211.5961	4' DIAMETER MANHOLE

**BENCH MARKS**

BM-201  
ELEV: 1,399.86 (NAVD 88)  
SQUARE CUT ON THE NORTHEAST SIDE OF A CONCRETE LIGHT POLE BASE ON THE SOUTH SIDE OF 19TH ST. NORTH AND WEST OF NORTH VERANDA ST. +/- 3' NORTHEAST TO THE SOUTH CURB LINE ALONG 19TH ST. NORTH. +/- 68' NORTHEAST TO THE BASE OF THE "ROUNDOABOUT AHEAD" SIGN POST.

BM-202  
ELEV: 1,394.77 (NAVD 88)  
SQUARE CUT ON TOP OF CURB ALONG 19TH ST. NORTH NEAR THE SOUTHWEST CORNER OF LOT 4, BLOCK 3, OAK CREEKS 2ND ADDITION. +/- 5' SOUTHWEST TO THE TOP BOLT OF A FIRE HYDRANT. +/- 55' WEST TO THE CENTER OF A BURIED ELECTRIC HAND HOLE. +/- 64' NORTHWEST TO THE BASE OF A LIGHT POLE.

BM-260  
ELEV: 1,398.45 (NAVD 88)  
SET "T" SHAPED FENCE POST 0.2' BELOW SURFACE NEAR THE SOUTHWEST CORNER OF LOT 4 RESERVE A OF THE VILLAS AT OAK CREEK 3RD ADDITION.

BM-261  
ELEV: 1,393.92 (NAVD 88)  
SET "T" SHAPED FENCE POST 0.2' BELOW SURFACE 2' NORTH OF THE NORTH POWERPOLE OF A OVERHEAD TRANSMISSION LINE. NEAR THE SOUTHWEST PROPERTY CORNER OF LOT 7 RESERVE B OF THE VILLAS OAK CREEK 3RD ADDITION.

BM-262  
ELEV: 1,400.07 (NAVD 88)  
SET "T" SHAPED FENCE POST 0.2' BELOW SURFACE 2' NEAR THE SOUTHWESTERN MOST PROPERTY CORNER OF LOT 13 RESERVE B OF THE VILLAS OAK CREEK 3RD ADDITION.

BM-263 ELEV: 1,386.30 (NAVD 88)  
SET "T" SHAPED FENCE POST 0.2' BELOW SURFACE 1.5' NORTH OF THE NORTH POWERPOLE OF A OVERHEAD TRANSMISSION LINE. NEAR THE SOUTHWEST PROPERTY CORNER OF LOT 18 RESERVE B OF THE VILLAS OAK CREEK 3RD ADDITION.

BM-264  
ELEV: 1,376.76 (NAVD 88)  
SET CHISELED SQUARE CUT IN THE NORTHWEST CORNER OF CONCRETE HEADWALL ON THE NORTH SIDE OF A WATER RETENTION POND NEAR THE SOUTHWEST PROPERTY CORNER OF LOT 20 RESERVE B OF THE VILLAS OAK CREEK 3RD ADDITION.

- HORIZONTAL CONTROL POINTS**
- CP-160  
N: 385,048.4700 E: 2,371,593.1610  
SET 1/2" REBAR WITH BLUE PEC CP CAP 0.2 FEET BELOW SURFACE
- 11.6' NNE TO "T" SHAPED FENCE POST FLUSH WITH GROUND
  - 45.82' NNE TO 1/2" REBAR WITH ORANGE PEC CAP (SOUTHWEST PC FOR FUTURE VERANDA ST #4024)
  - 395' S TO LINE OF EAST-WEST POWERPOLES
- CP-161  
N: 384,666.7780 E: 2,371,869.8110  
SET 1/2" REBAR WITH BLUE PEC CP CAP 0.2 FEET BELOW SURFACE
- 40.07' W TO "MAG" NAIL IN NORTH FACE WOODEN POWER POLE
  - 13' S TO LINE OF EAST-WEST POWER POLES
  - 158.81' WNW TO 1/2" REBAR WITH ORANGE PEC CAP (SOUTHWEST PC FOR FUTURE STEEPLCHASE ST # 4029)
- CP-162  
N: 385,020.1900 E: 2,371,973.1910  
SET 1/2" REBAR WITH BLUE PEC CP CAP 0.2 FEET BELOW SURFACE
- 232.4' NE TO "MAG" NAIL IN SOUTH FACE 30' OAK TREE
  - 91.08' E TO "T" SHAPED FENCE POST FLUSH WITH GROUND
  - 36.55' SE TO 1/2" REBAR WITH ORANGE PEC CAP (SOUTHWEST PC FOR FUTURE STEEPLCHASE CT # 4032)
- CP-163  
N: 384,698.9090 E: 2,372,480.2280  
SET 1/2" REBAR WITH BLUE PEC CP CAP 0.2 FEET BELOW SURFACE
- 77.4' SW TO "MAG" NAIL IN NORTH FACE WOODEN POWER POLE
  - 35.5' S TO LINE OF EAST-WEST POWER POLES
  - 48.15' SE TO 1/2" REBAR WITH ORANGE PEC CAP (SOUTHWEST PC FOR FUTURE STEEPLCHASE ST # 4041)

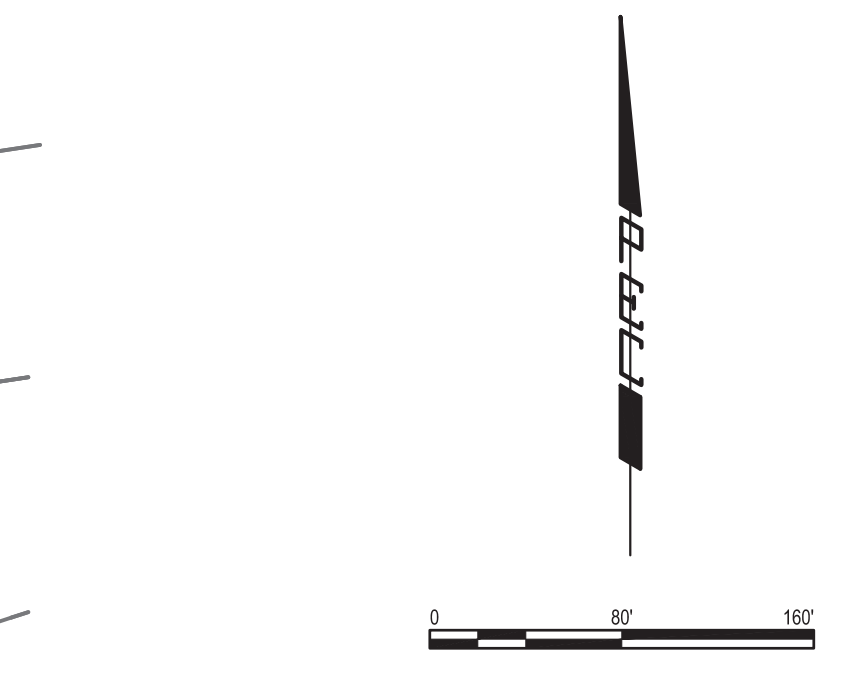
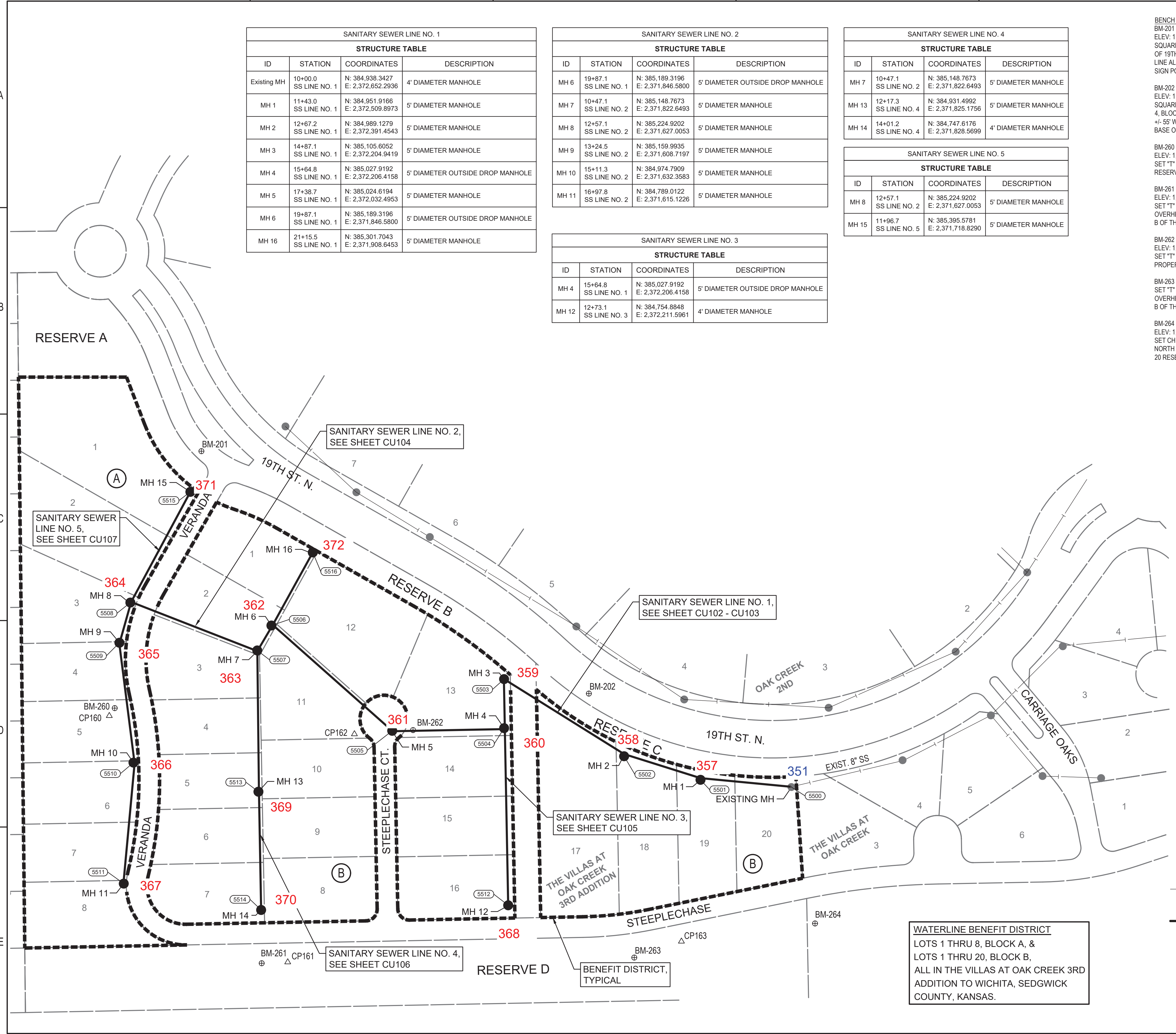


**SANITARY SEWER IMPROVEMENTS TO SERVE THE VILLAS AT OAK CREEK 3RD ADDITION**  
 GARY JANZEN, P.E. - CITY ENGINEER  
 CITY OF WICHITA ENGINEERING PROJECT NO. 468-2022-021574

JOB NO.	210524-002-0042
DATE	AUGUST 2022
PM	TBK
DESIGNED BY	SNW
DRAWN BY	DMS
CHECKED BY	TBK

SANITARY SEWER BUBBLE MAP	
---------------------------	--

**CU101**  
4 OF 20



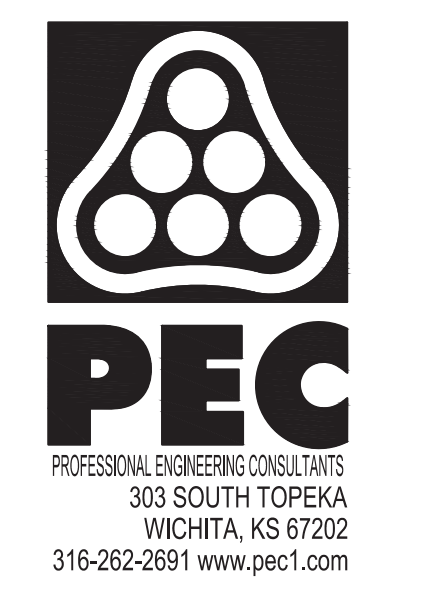
- LEGEND**
- EXISTING SANITARY SEWER WITH MANHOLE
  - PROPOSED SANITARY SEWER WITH MANHOLE

**WATERLINE BENEFIT DISTRICT**  
 LOTS 1 THRU 8, BLOCK A, & LOTS 1 THRU 20, BLOCK B, ALL IN THE VILLAS AT OAK CREEK 3RD ADDITION TO WICHITA, SEDGWICK COUNTY, KANSAS.

SEE SHEET NO. C-003 FOR PLAT COORDINATES.

SAVED 9/9/2022 3:32:29 PM BY KURTIS DEKAT  
 PLOTTED 9/9/2022 3:39:58 PM BY KURTIS DEKAT  
 U:\WICHITA-CIVIL\2022\1210524002\PEC\DRAWINGS\210524-002-CU101.DWG

SANITARY SEWER RISER TABLE							FOR INFORMATION ONLY	
NUMBER	TYPE	LOCATION				APPROXIMATE LENGTH		
		LOT NO.	BLOCK NO.	LINE NO.	STATION	DIRECTION	VERTICAL (FT)	HORIZONTAL (FT)
1	4" TEE	20	B	1	10+19	LT	16	6
2	4" TEE	19	B	1	11+21	LT	19	8
3	4" TEE	18	B	1	12+11	LT	19	10
4	4" TEE	17	B	1	13+32	LT	19	12



N: 384,938.3427, E: 2,372,652.2936  
 STA. 10+00.00, SS LINE NO. 1  
 EXISTING MH  
 4' DIAMETER MANHOLE  
 EXISTING 8" STUB \*  
 REMOVE PLUG AND BEGIN CONSTRUCTION

N: 384,951.9166, E: 2,372,509.8973  
 STA. 11+43.04, SS LINE NO. 1  
 CONSTRUCT MH 1  
 5' DIAMETER MANHOLE

N: 384,989.1279, E: 2,372,391.4543  
 STA. 12+67.19, SS LINE NO. 1  
 CONSTRUCT MH 2  
 5' DIAMETER MANHOLE

N: 385,105.6052, E: 2,372,204.9419  
 STA. 14+87.09, SS LINE NO. 1  
 CONSTRUCT MH 3  
 5' DIAMETER MANHOLE  
 MATCH POINT

SSM-4  
 4' CONC. MANHOLE  
 W/ 1' RISER  
 RIM: 1388.55  
 IN (W) 8" PVC=1370.05  
 OUT (E) 8" PVC=1369.95

Riser #1, Lot 20, Block B  
 Dist. from Main to MH: 6' Lt.  
 Distance from DSMH: 124'

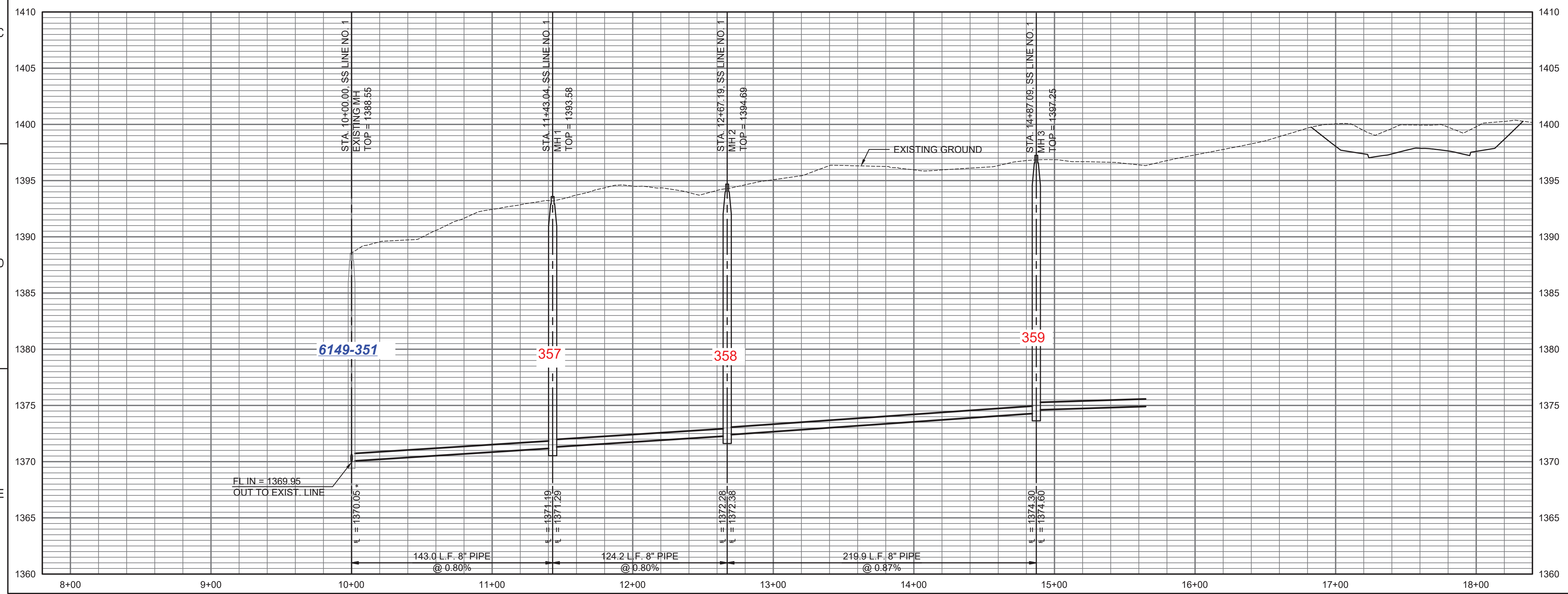
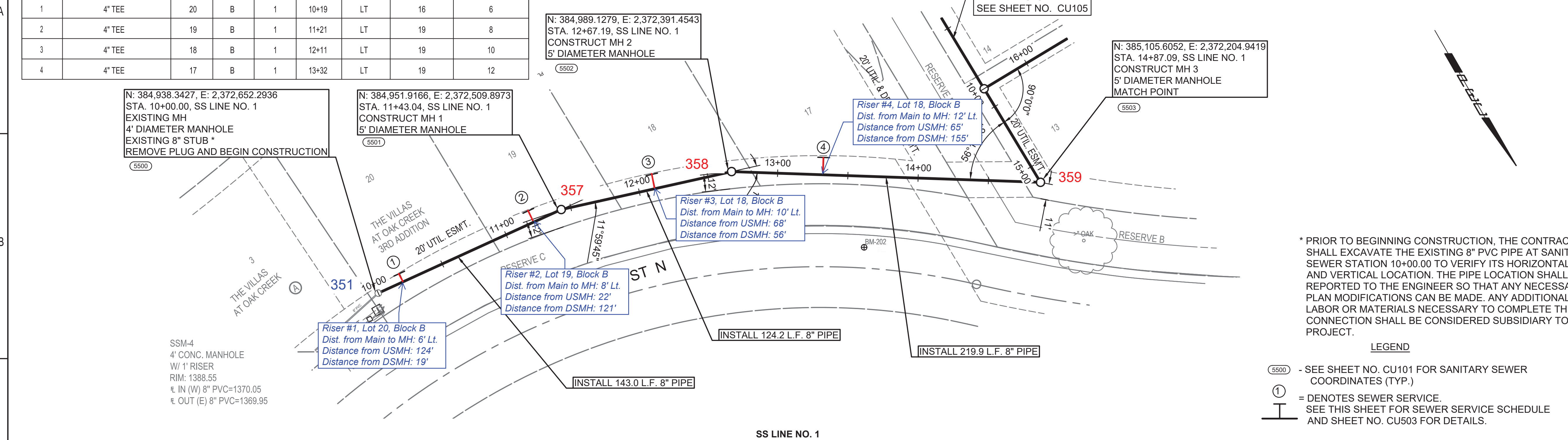
Riser #2, Lot 19, Block B  
 Dist. from Main to MH: 8' Lt.  
 Distance from DSMH: 121'

Riser #3, Lot 18, Block B  
 Dist. from Main to MH: 10' Lt.  
 Distance from USMH: 68'  
 Distance from DSMH: 56'

Riser #4, Lot 18, Block B  
 Dist. from Main to MH: 12' Lt.  
 Distance from USMH: 65'  
 Distance from DSMH: 155'

\* PRIOR TO BEGINNING CONSTRUCTION, THE CONTRACTOR SHALL EXCAVATE THE EXISTING 8" PVC PIPE AT SANITARY SEWER STATION 10+00.00 TO VERIFY ITS HORIZONTAL AND VERTICAL LOCATION. THE PIPE LOCATION SHALL BE REPORTED TO THE ENGINEER SO THAT ANY NECESSARY PLAN MODIFICATIONS CAN BE MADE. ANY ADDITIONAL LABOR OR MATERIALS NECESSARY TO COMPLETE THE CONNECTION SHALL BE CONSIDERED SUBSIDIARY TO THE PROJECT.

- LEGEND**
- (5500) - SEE SHEET NO. CU101 FOR SANITARY SEWER COORDINATES (TYP.)
  - (1) = DENOTES SEWER SERVICE. SEE THIS SHEET FOR SEWER SERVICE SCHEDULE AND SHEET NO. CU503 FOR DETAILS.



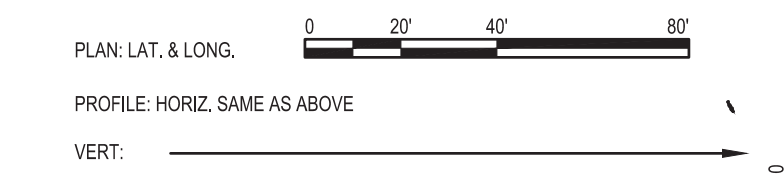
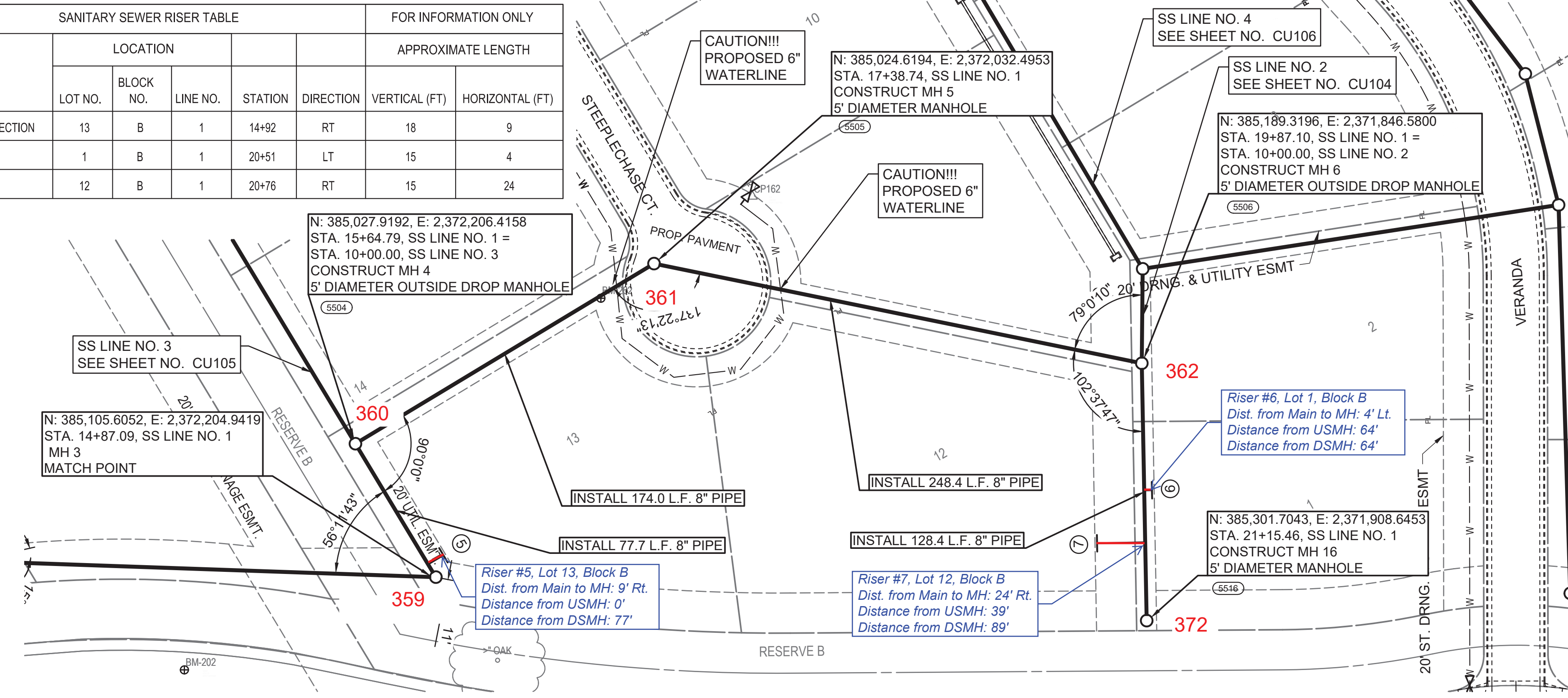
SANITARY SEWER IMPROVEMENTS  
 TO SERVE  
 THE VILLAS AT  
 OAK CREEK 3RD ADDITION  
 GARY JANZEN, P.E. - CITY ENGINEER  
 CITY OF WICHITA ENGINEERING PROJECT NO.  
 468-2022-021574

JOB NO.	210524-002-0042
DATE	AUGUST 2022
PM	TBK
DESIGNED BY	SNW
DRAWN BY	DMS
CHECKED BY	TBK

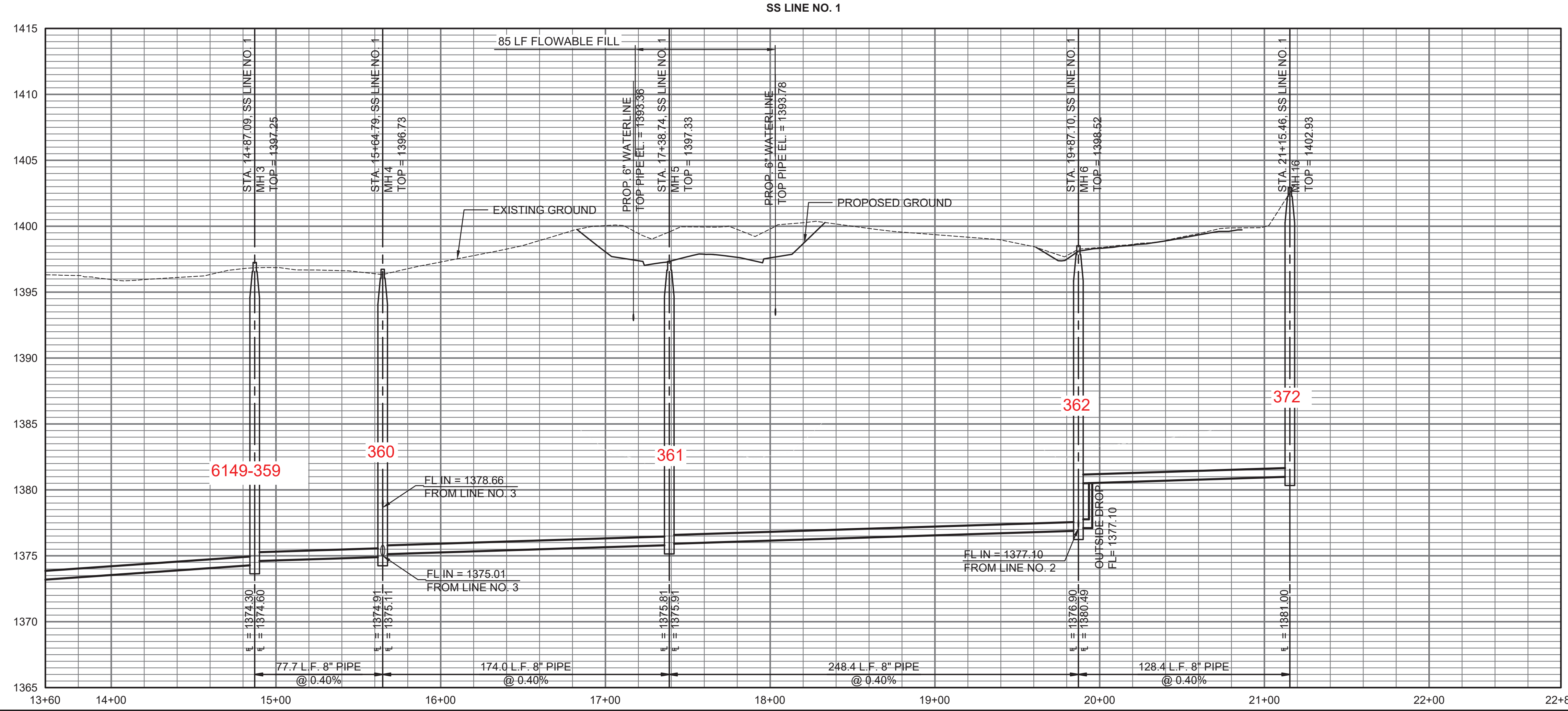
SANITARY SEWER LINE NO. 1

SAVED 9/9/2022 3:35:11 PM BY KURTIS DEKAT  
 PLOTTED 9/9/2022 3:40:09 PM BY KURTIS DEKAT  
 U:\WICHITA-CIVIL\2021\210524\02\PEC\DRAWINGS\210524-002-CU102.DWG

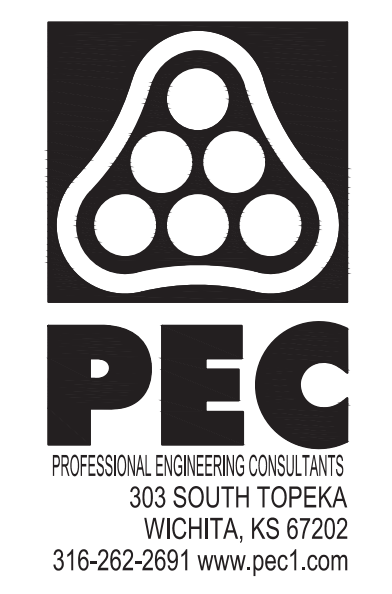
SANITARY SEWER RISER TABLE							FOR INFORMATION ONLY	
NUMBER	TYPE	LOT NO.	BLOCK NO.	LINE NO.	STATION	DIRECTION	VERTICAL (FT)	HORIZONTAL (FT)
5	4" MANHOLE CONNECTION	13	B	1	14+92	RT	18	9
6	4" TEE	1	B	1	20+51	LT	15	4
7	4" TEE	12	B	1	20+76	RT	15	24



- LEGEND**
- (5500) - SEE SHEET NO. CU101 FOR SANITARY SEWER COORDINATES (TYP.)
  - (1) = DENOTES SEWER SERVICE. SEE THIS SHEET FOR SEWER SERVICE SCHEDULE AND SHEET NO. CU503 FOR DETAILS.



SAVED 9/9/2022 3:35:02 PM BY KURTIS DEKAT  
 PLOTTED 9/9/2022 3:40:23 PM BY KURTIS DEKAT  
 U:\WICHITA-CIVIL\2021\210524\02\PEC\DRAWINGS\210524-002-CU103.DWG

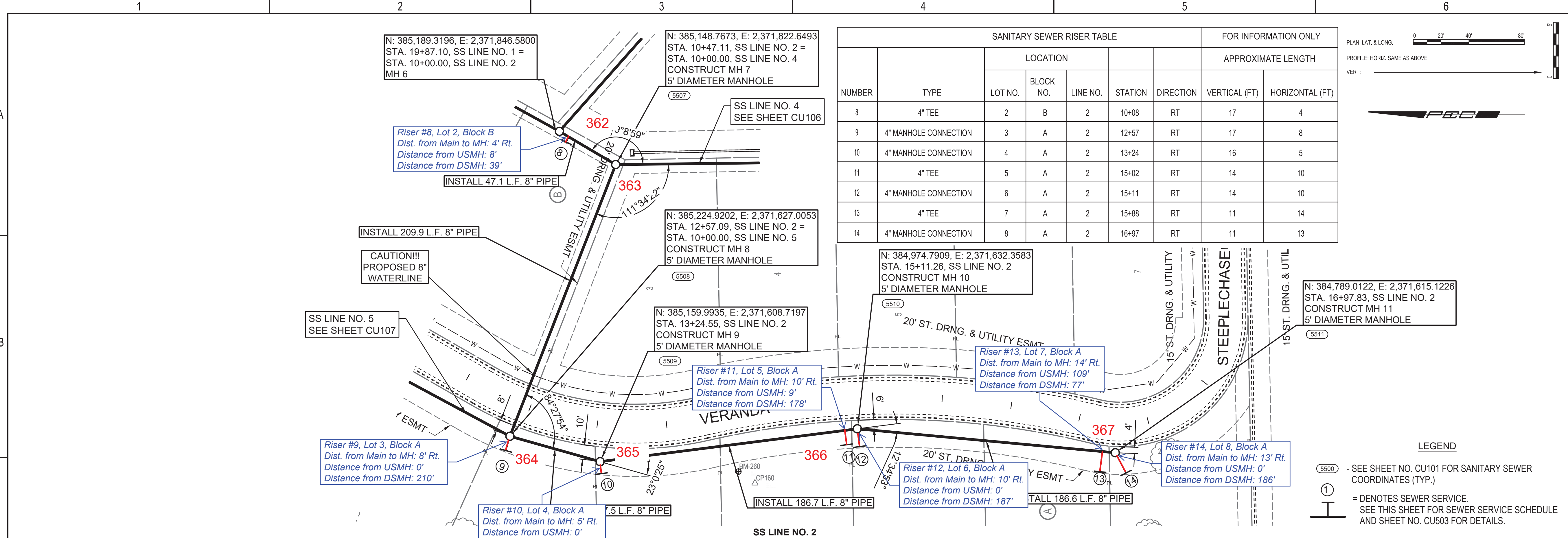


**SANITARY SEWER IMPROVEMENTS TO SERVE THE VILLAS AT OAK CREEK 3RD ADDITION**  
 GARY JANZEN, P.E. - CITY ENGINEER  
 CITY OF WICHITA ENGINEERING PROJECT NO. 468-2022-021574

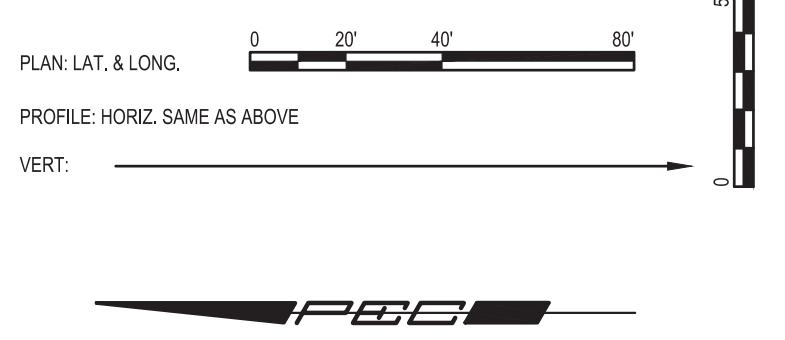
JOB NO.	210524-002-0042
DATE	AUGUST 2022
PM	TBK
DESIGNED BY	SNW
DRAWN BY	DMS
CHECKED BY	TBK

SANITARY SEWER LINE NO. 1

SAVED 9/9/2022 3:34:54 PM BY KURTIS DEKAT  
 PLOTTED 9/9/2022 3:40:35 PM BY KURTIS DEKAT  
 U:\WICHITA-CIVIL\2021\210524\02\PECDRAWINGS\210524-002-CU104.DWG



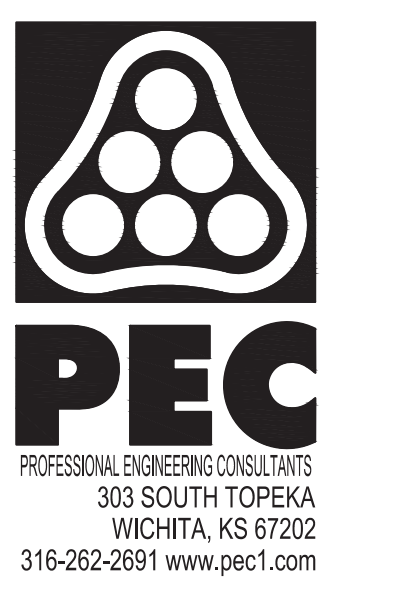
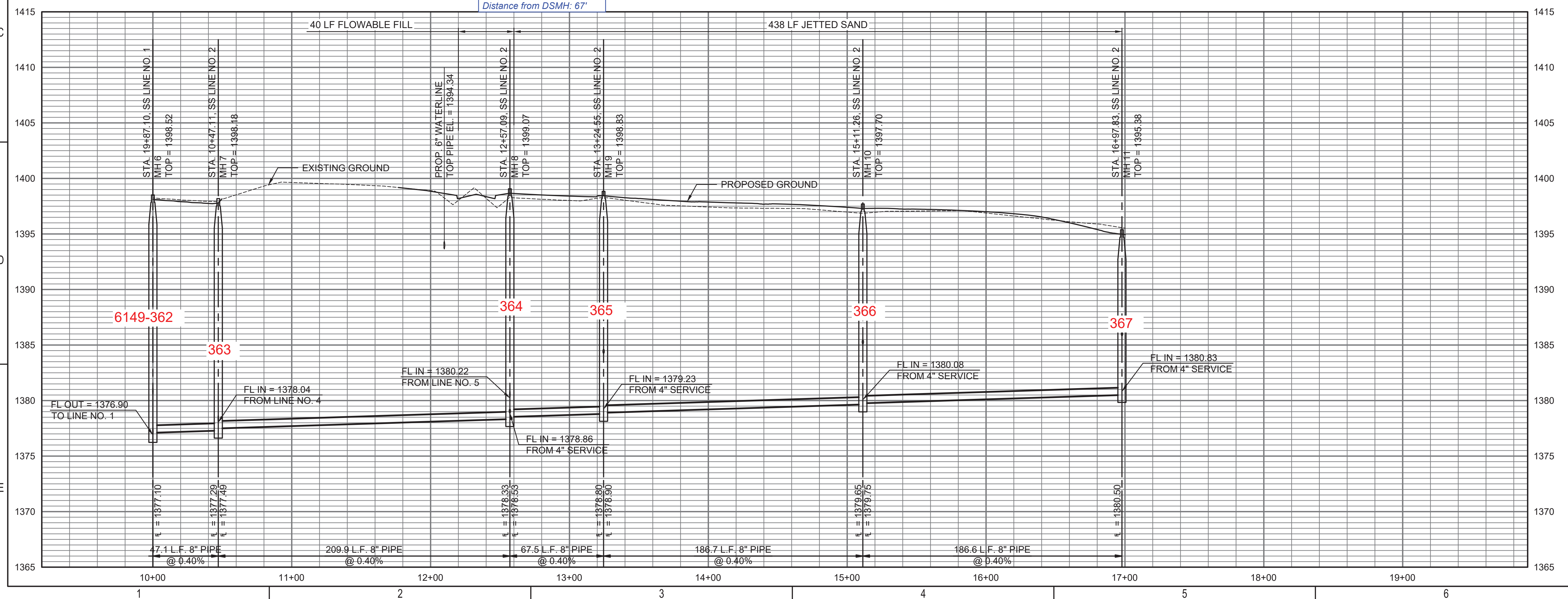
SANITARY SEWER RISER TABLE							FOR INFORMATION ONLY	
NUMBER	TYPE	LOCATION			STATION	DIRECTION	APPROXIMATE LENGTH	
		LOT NO.	BLOCK NO.	LINE NO.			VERTICAL (FT)	HORIZONTAL (FT)
8	4" TEE	2	B	2	10+08	RT	17	4
9	4" MANHOLE CONNECTION	3	A	2	12+57	RT	17	8
10	4" MANHOLE CONNECTION	4	A	2	13+24	RT	16	5
11	4" TEE	5	A	2	15+02	RT	14	10
12	4" MANHOLE CONNECTION	6	A	2	15+11	RT	14	10
13	4" TEE	7	A	2	15+88	RT	11	14
14	4" MANHOLE CONNECTION	8	A	2	16+97	RT	11	13



**LEGEND**

(5500) - SEE SHEET NO. CU101 FOR SANITARY SEWER COORDINATES (TYP.)

(1) = DENOTES SEWER SERVICE. SEE THIS SHEET FOR SEWER SERVICE SCHEDULE AND SHEET NO. CU503 FOR DETAILS.



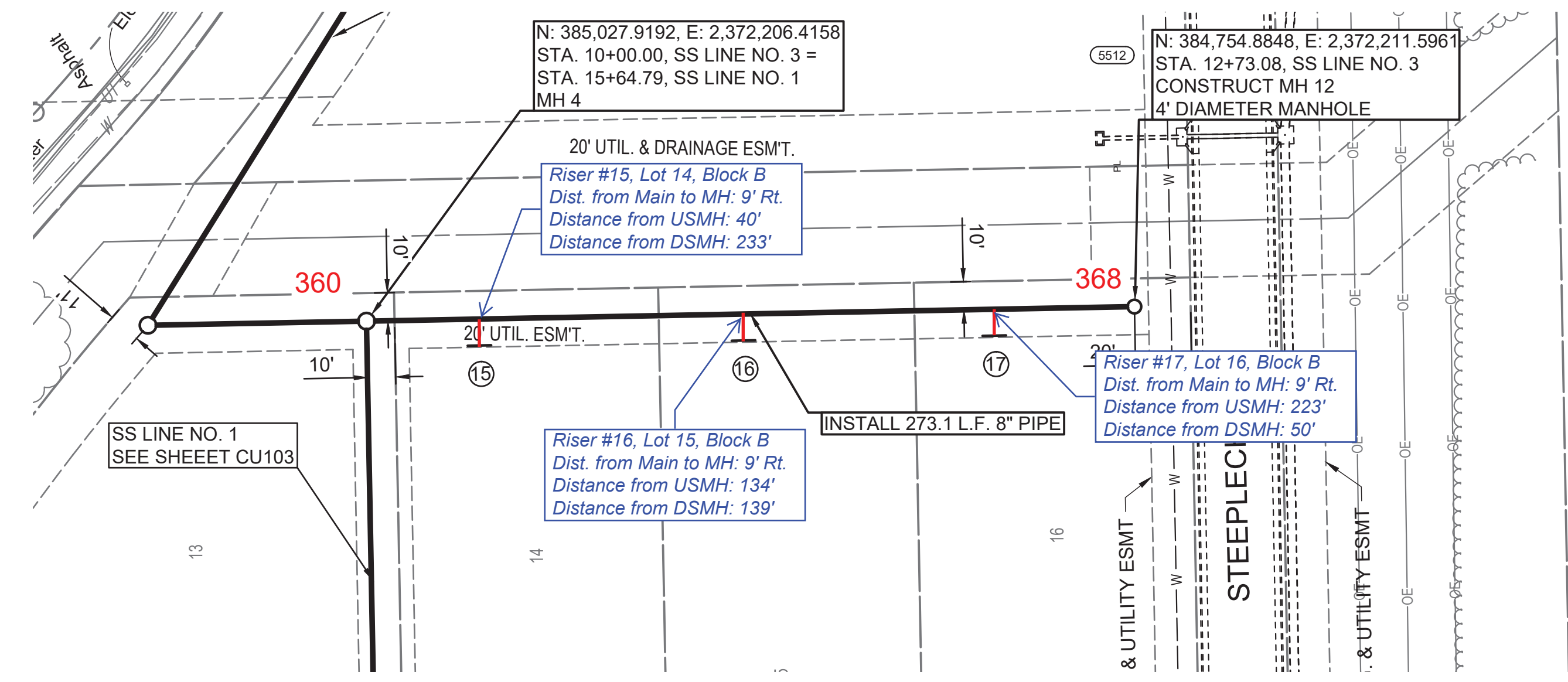
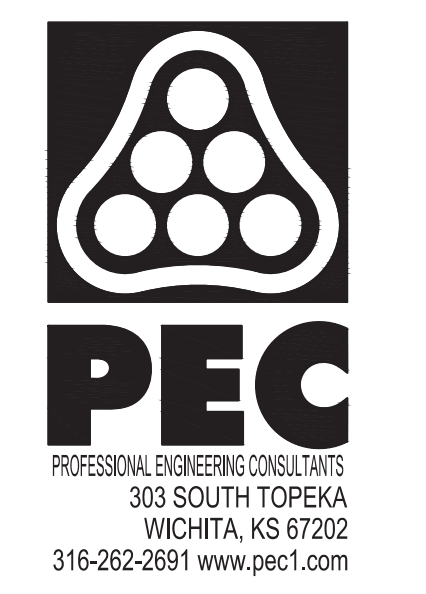
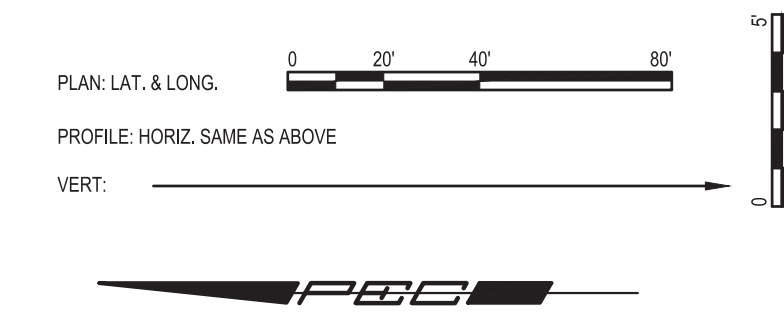
**SANITARY SEWER IMPROVEMENTS TO SERVE THE VILLAS AT OAK CREEK 3RD ADDITION**

GARY JANZEN, P.E. - CITY ENGINEER  
 CITY OF WICHITA ENGINEERING PROJECT NO. 468-2022-021574

JOB NO.	210524-002-0042
DATE	AUGUST 2022
PM	TBK
DESIGNED BY	SNW
DRAWN BY	DMS
CHECKED BY	TBK

SANITARY SEWER LINE NO. 2

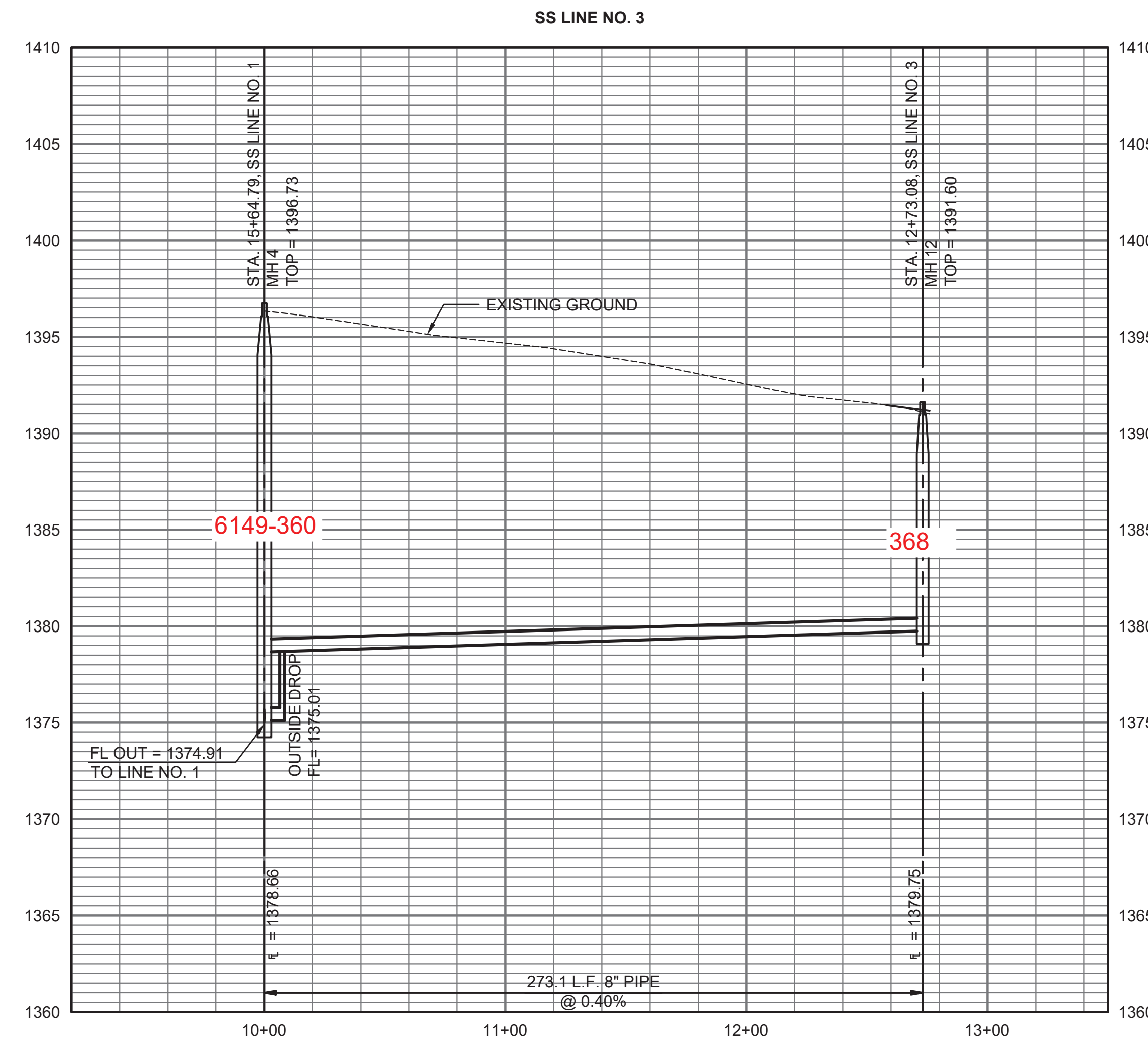
SANITARY SEWER RISER TABLE							FOR INFORMATION ONLY	
NUMBER	TYPE	LOCATION				APPROXIMATE LENGTH		
		LOT NO.	BLOCK NO.	LINE NO.	STATION	DIRECTION	VERTICAL (FT)	HORIZONTAL (FT)
15	4" TEE	14	B	3	10+40	RT	14	9
16	4" TEE	15	B	3	11+34	RT	14	9
17	4" TEE	16	B	3	12+23	RT	14	9



**LEGEND**

(S500) - SEE SHEET NO. CU101 FOR SANITARY SEWER COORDINATES (TYP.)

① = DENOTES SEWER SERVICE. SEE THIS SHEET FOR SEWER SERVICE SCHEDULE AND SHEET NO. CU503 FOR DETAILS.



SANITARY SEWER IMPROVEMENTS  
TO SERVE  
THE VILLAS AT  
OAK CREEK 3RD ADDITION

GARY JANZEN, P.E. - CITY ENGINEER  
CITY OF WICHITA ENGINEERING PROJECT NO.  
468-2022-021574

JOB NO.	210524-002-0042
DATE	AUGUST 2022
PM	TBK
DESIGNED BY	SNW
DRAWN BY	DMS
CHECKED BY	TBK

SANITARY SEWER LINE NO. 3

SAVED 9/9/2022 3:34:43 PM BY KURTIS DEKAT  
PLOTTED 9/9/2022 3:40:49 PM BY KURTIS DEKAT  
U:\WICHITA-CIVIL\2021\210524\02\PEC\DRAWINGS\210524-002-CU105.DWG

SANITARY SEWER RISER TABLE							FOR INFORMATION ONLY		DISTANCE FROM MAIN TO RISER (LT./RT.)		
NUMBER	TYPE	LOCATION				DIRECTION	APPROXIMATE LENGTH		UPSTREAM MANHOLE	DOWNSTREAM MANHOLE	
		LOT NO.	BLOCK NO.	LINE NO.	STATION		VERTICAL (FT)	HORIZONTAL (FT)			
18	4" TEE	3	B	4	10+22	RT	16	5	5' Rt.	195'	22'
19	4" TEE	11	B	4	10+48	LT	15	23	23' Lt.	169'	48'
20	4" TEE	4	B	4	11+02	RT	14	4	4' Rt.	115'	102'
21	4" TEE	10	B	4	11+69	LT	12	23	23' Lt.	48'	169'
22	4" TEE	5	B	4	11+88	RT	12	4	4' Rt.	29'	188'
23	4" TEE	9	B	4	12+61	LT	11	23	23' Lt.	140'	44'
24	4" TEE	6	B	4	12+72	RT	11	4	4' Rt.	129'	55'
25	4" TEE	8	B	4	13+51	LT	9	23	23' Lt.	50'	134'
26	4" TEE	7	B	4	13+61	LT	9	4	4' Lt.	40'	144'

**LEGEND**

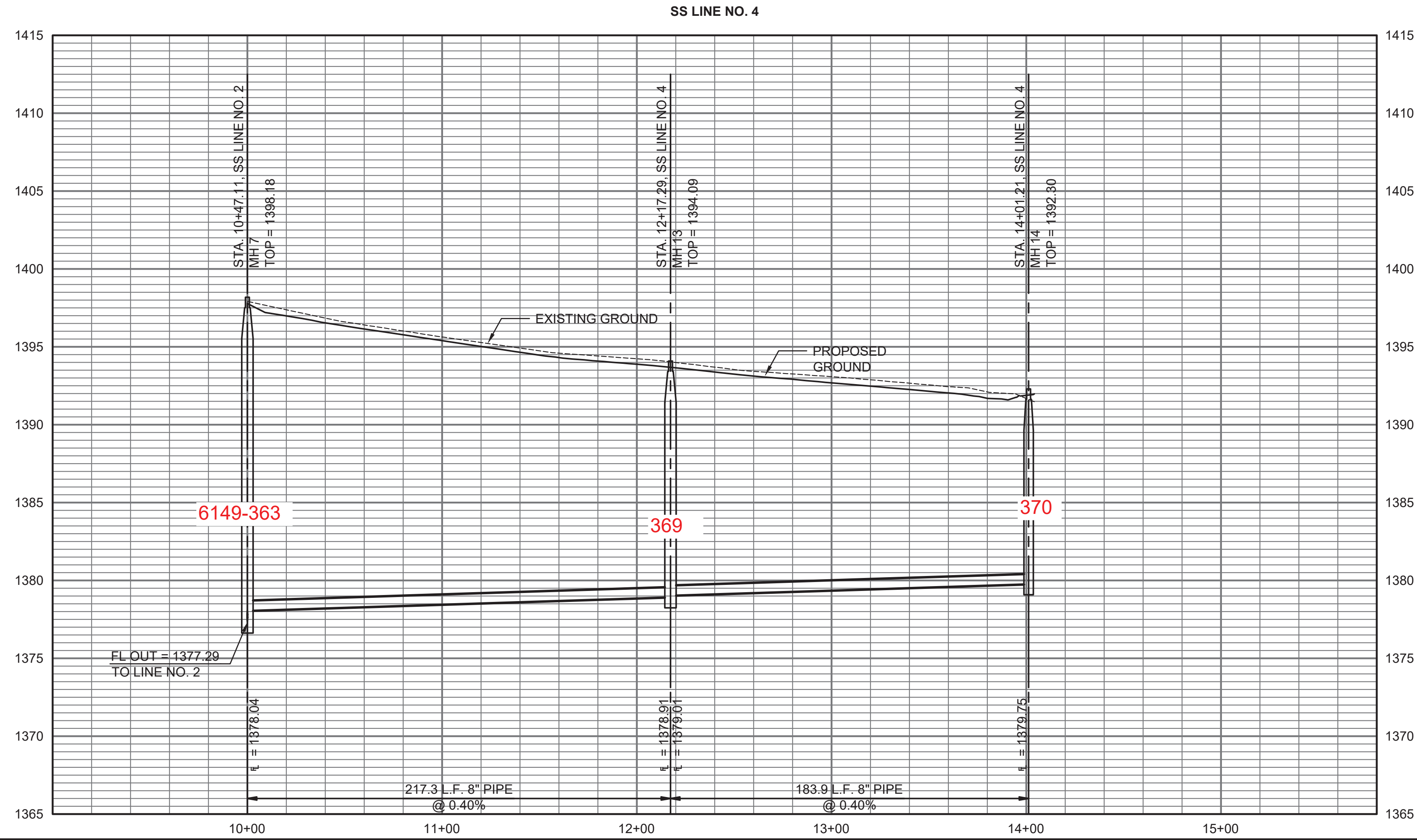
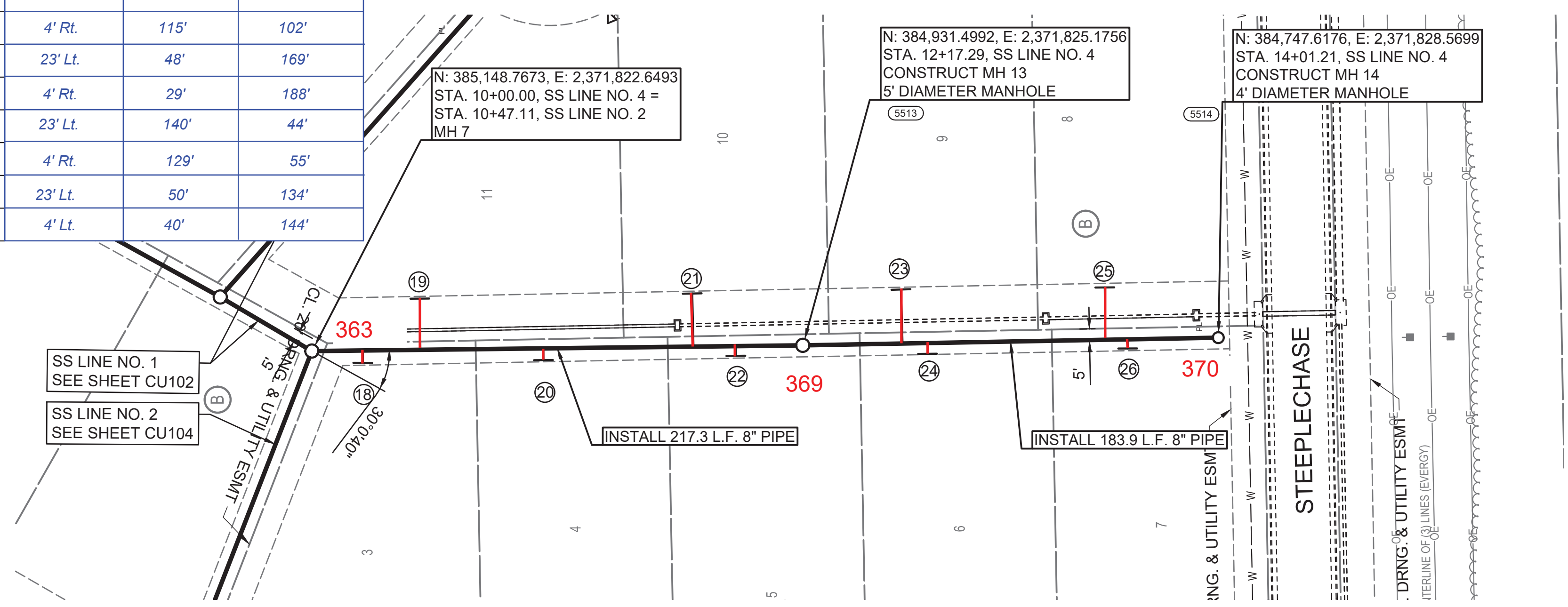
(5500) - SEE SHEET NO. CU101 FOR SANITARY SEWER COORDINATES (TYP.)

(1) = DENOTES SEWER SERVICE. SEE THIS SHEET FOR SEWER SERVICE SCHEDULE AND SHEET NO. CU503 FOR DETAILS.

PLAN: LAT. & LONG. 0 20' 40' 80'

PROFILE: HORIZ. SAME AS ABOVE

VERT: 5'



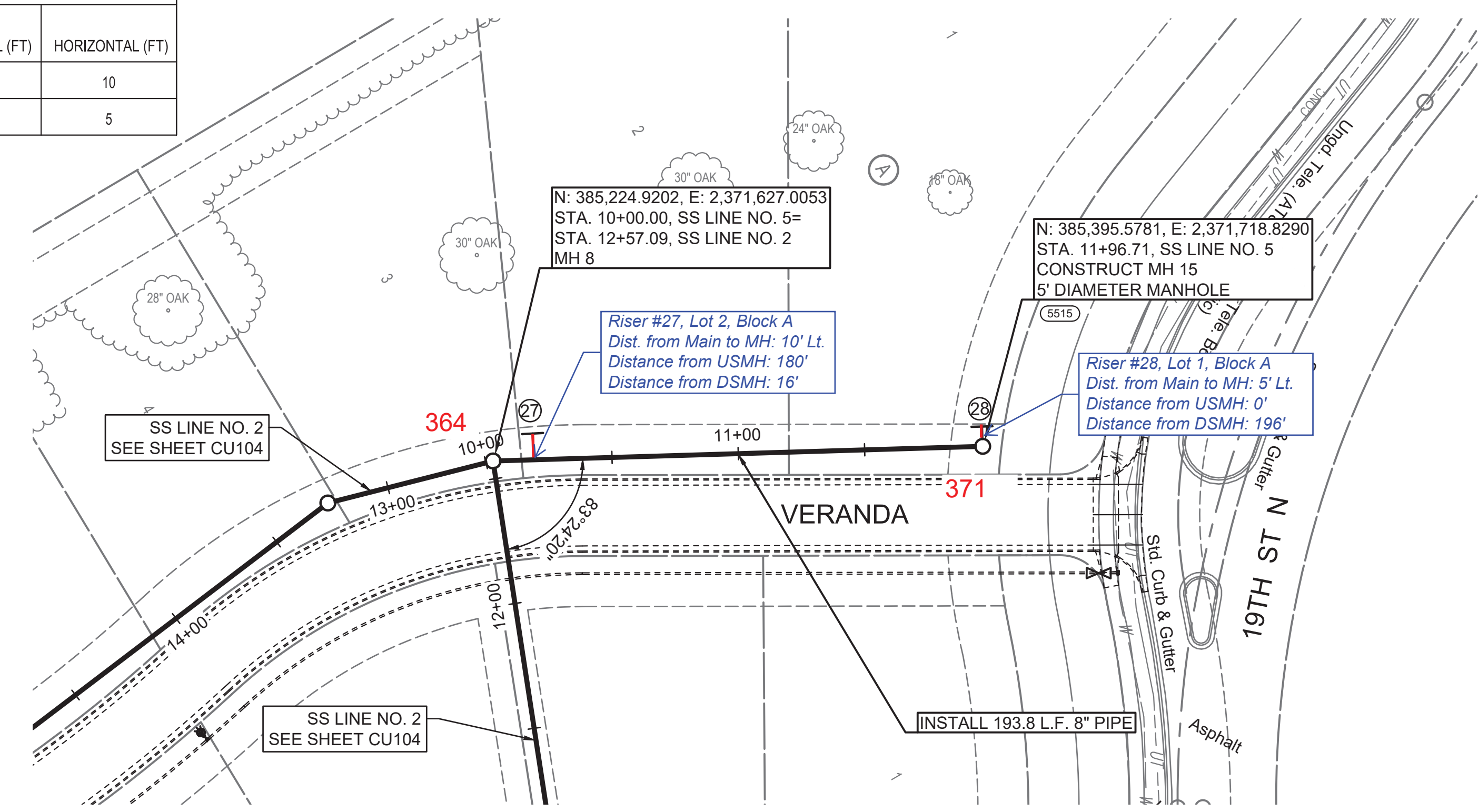
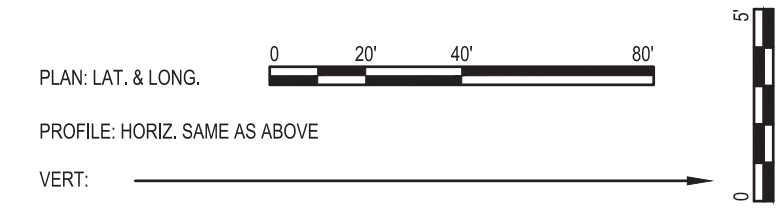
SANITARY SEWER IMPROVEMENTS  
TO SERVE  
THE VILLAS AT  
OAK CREEK 3RD ADDITION  
GARY JANZEN, P.E. - CITY ENGINEER  
CITY OF WICHITA ENGINEERING PROJECT NO.  
468-2022-021574

JOB NO.	210524-002-0042
DATE	AUGUST 2022
PM	TBK
DESIGNED BY	SNW
DRAWN BY	DMS
CHECKED BY	TBK

SANITARY SEWER LINE NO. 4

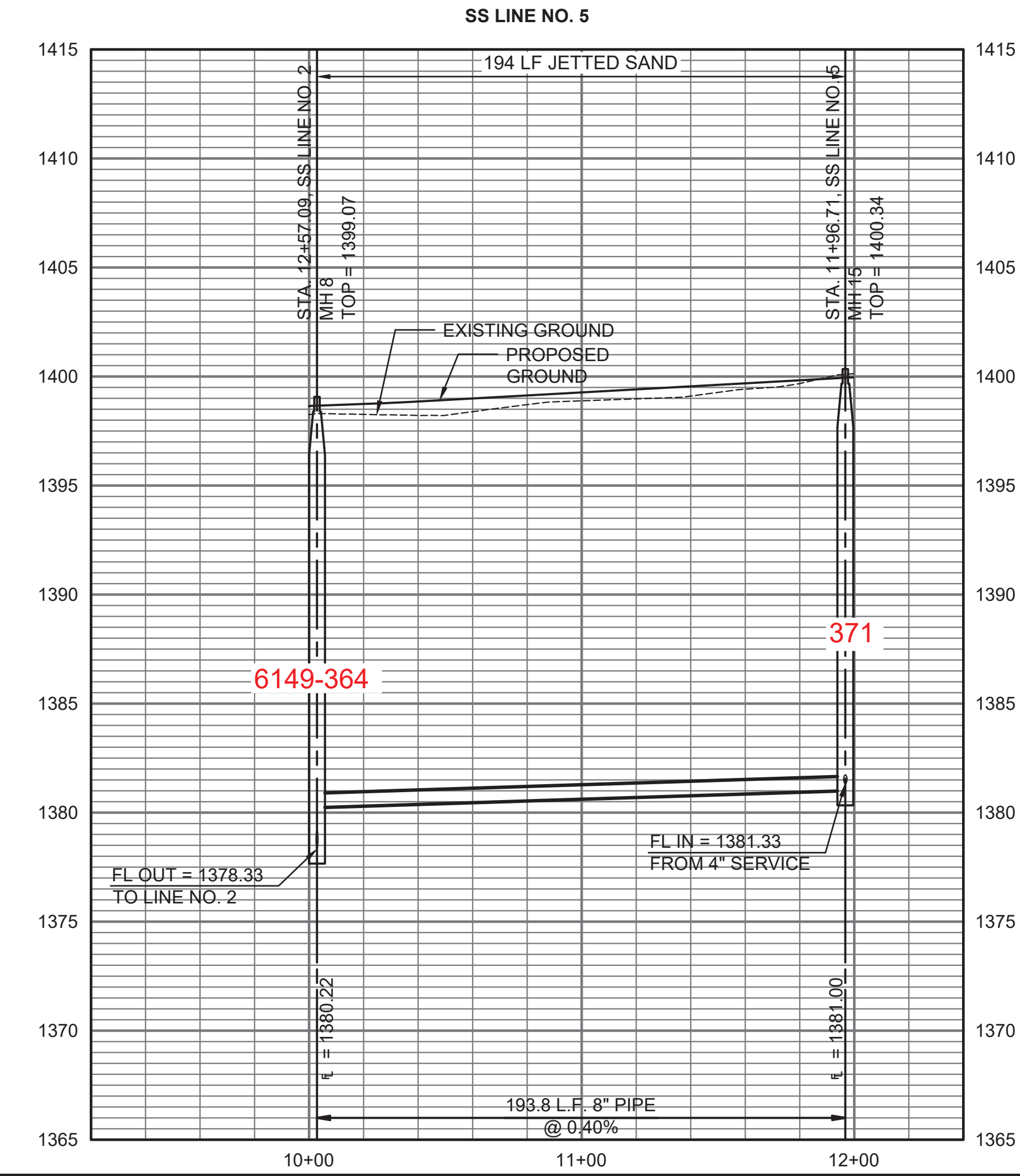
SAVED 9/9/2022 3:34:20 PM BY KURTIS DEKAT  
PLOTTED 9/9/2022 3:41:00 PM BY KURTIS DEKAT  
U:\WICHITA-CIVIL\2021\210524\02\PEC\DRAWINGS\210524-002-CU106.DWG

SANITARY SEWER RISER TABLE							FOR INFORMATION ONLY	
NUMBER	TYPE	LOCATION					APPROXIMATE LENGTH	
		LOT NO.	BLOCK NO.	LINE NO.	STATION	DIRECTION	VERTICAL (FT)	HORIZONTAL (FT)
27	4" TEE	2	A	5	10+16	LT	15	10
28	4" MANHOLE CONNECTION	1	A	5	11+96	LT	15	5

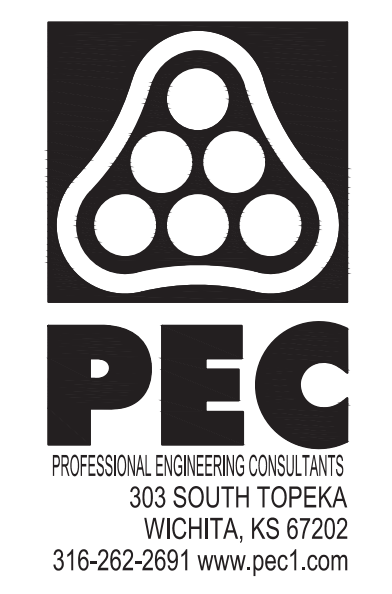


5500 - SEE SHEET NO. CU101 FOR SANITARY SEWER COORDINATES (TYP.)

① = DENOTES SEWER SERVICE. SEE THIS SHEET FOR SEWER SERVICE SCHEDULE AND SHEET NO. CU503 FOR DETAILS.



SAVED 9/9/2022 3:32:45 PM BY KURTIS DEKAT  
 PLOTTED 9/9/2022 3:41:15 PM BY KURTIS DEKAT  
 U:\WICHITA-CIVIL\2021\210524002\PEC\DRAWINGS\CU107 SANITARY SEWER LINE NO. 5.DWG



SANITARY SEWER IMPROVEMENTS  
 TO SERVE  
 THE VILLAS AT  
 OAK CREEK 3RD ADDITION  
 GARY JANZEN, P.E. - CITY ENGINEER  
 CITY OF WICHITA ENGINEERING PROJECT NO.  
 468-2022-021574

JOB NO.	210524-002-0042
DATE	AUGUST 2022
PM	TBK
DESIGNED BY	SNW
DRAWN BY	DMS
CHECKED BY	TBK

SANITARY SEWER LINE NO. 5