

PLAN NOTES

1. PROVIDE NEW STEEL SUPPORT BEAMS UNDER COOLING TOWERS. PROVIDE TWO UPPER W8x24 GALVANIZED STEEL BEAMS PER TOWER ORIENTED WITH THE LONG DIMENSION OF THE TOWERS. PROVIDE TWO LOWER W8x24 GALVANIZED STEEL BEAMS SPANNING OVER ALL FOUR EXISTING CONCRETE COLUMNS TO ATTACH THE UPPER BEAM TO PROVIDE 3" WEB STIFFENERS EACH SIDE OF THE LOWER BEAM WEBS WHERE THE UPPER BEAMS ARE SUPPORTED. PROVIDE 3" WEB STIFFENERS EACH SIDE OF THE LOWER BEAM WEBS WHERE THE LOWER BEAMS ARE SUPPORTED BY THE CONCRETE COLUMNS. UTILIZE THE EXISTING BOLTS IN THE COLUMNS FOR ATTACHMENT TO THE LOWER BEAM. BOLT THE UPPER BEAM TO THE LOWER BEAM WITH 4 - 3/4" DIAMETER GALVANIZED BOLTS AT EACH BEAM INTERSECTION.
2. CORE NEW HOLES THROUGH THE EXTERIOR WALL AND FLOOR FOR NEW PIPING.
3. NEW TOWER ISOLATION CONTROL VALVE.
4. NEW HEAD PRESSURE CONTROL VALVE BY T.C.C.
5. 2" DRAIN DOWN WITH ISOLATION CONTROL VALVE BY T.C.C.
6. NEW 3-WAY TOWER BYPASS VALVE BY T.C.C., 10" PIPE DOWN FROM VALVE INTO BASIN.
7. NEW CONDENSER WATER PIPING TO CHILLERS AND COOLING TOWERS.
8. PIPE SUPPORT BY M.C.
9. EXISTING PIPE SUPPORT.
10. NEW 8" GAS PIPING DOWN INSIDE BOILER ROOM AND TO BE CONNECTED OUTSIDE TO EXISTING GAS PIPING TO BE CHANGED FROM 10" TO 12" AT THE METER. EXISTING 10" INSIDE BUILDING TO REMAIN, M.C. TO PROVIDE PRESSURE REGULATOR TO REDUCE FROM 14" TO 7" W.C. IN MECHANICAL ROOM FOR NEW 8" UP TO ROOF.
11. GAS METER TO BE ADJUSTED BY HCS CO. EXISTING LOAD 22478 CFH. NEW ADDITIONAL LOAD OF 5830 CFH. NEW TOTAL LOAD OF 28308 CFH.
12. CONNECT NEW 4" SANITARY SEWER TO EXISTING IN EXISTING 4" IN BOILER ROOM. FIELD VERIFY ALL UTILITIES SAW CUT FLOOR AND PATCH TO MATCH EXISTING.
13. NEW 4" DCW WITH SHUT-OFF FOR NEW ADDITION REFERENCE M331A FOR CONTINUATION.



ARCHITECTURE
 SCHAEFER JOHNSON DCCX, INC.
 207 N. Broadway
 Wichita, KS 67202
 P: 316.261.9175
 F: 316.261.9188
 www.sjdc.com

MEI
 MEI ENGINEERING, INC.
 1310 S. ST. B STREET
 PHILADELPHIA, PA 19104
 FAX 215.381.2800

USD 259
 NORTHWEST HIGH SCHOOL
 ADDITION AND REMODEL
 BID NO. 13-25000
 1220 N. TYLER ROAD
 WICHITA, KS 67212

© 2014
 Schaefer Johnson DCCX, Inc. All Rights Reserved.

These drawings and their contents, including but not limited to, all contents herein, are the sole and exclusive property of Schaefer Johnson DCCX, Inc. and may not be used or reproduced in any way without the express permission of S.J.D.

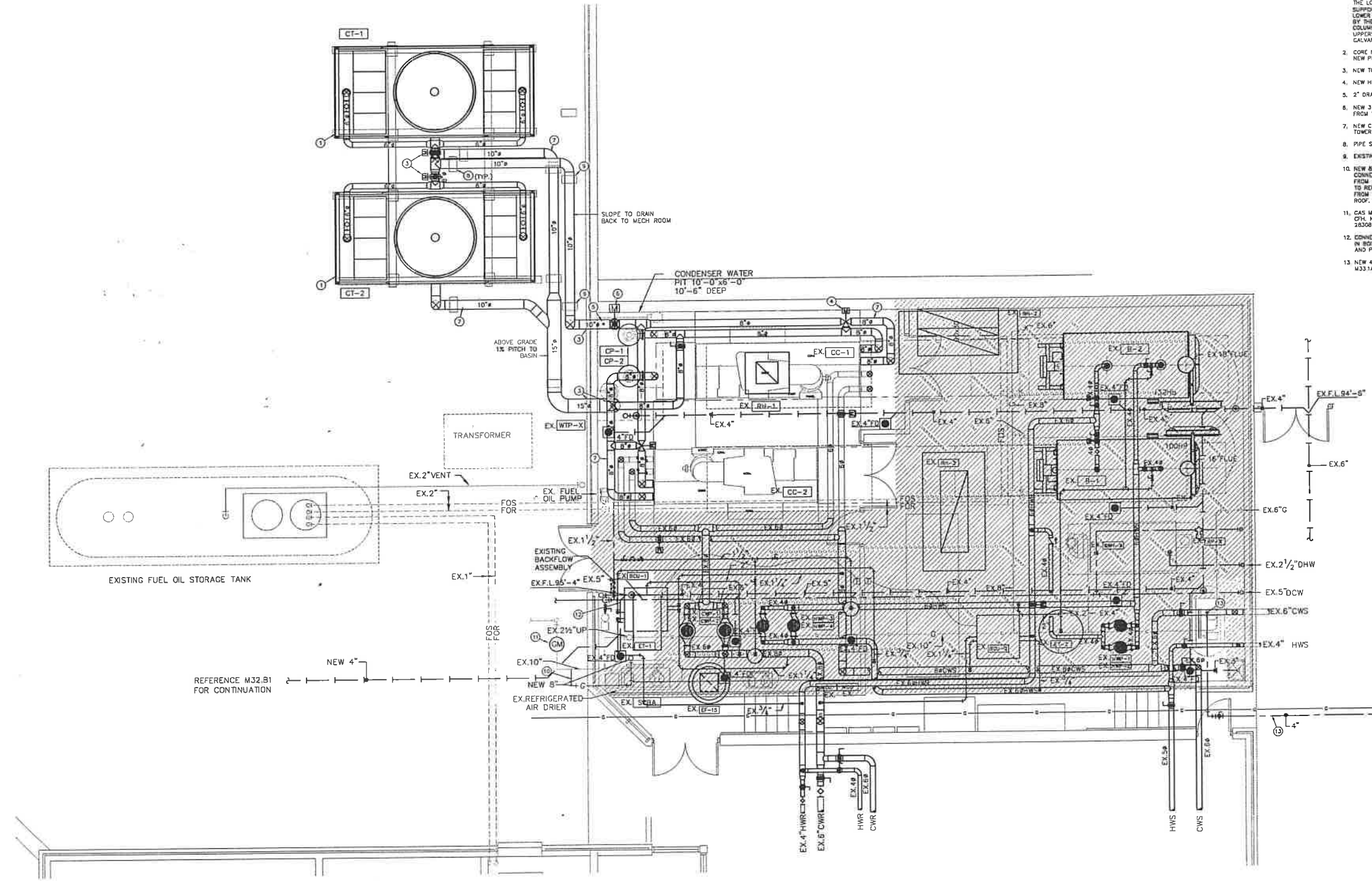
Revisions	Revisions
▲	▲
▲	▲
▲	▲
▲	▲

Project Number
 SJCF 5098.00

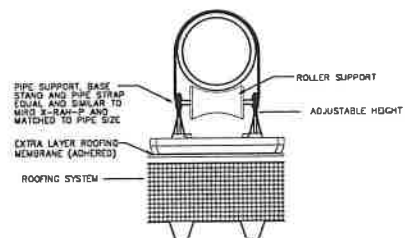
Date
 MAY 2014
 ENLARGED
 PLANS

SCALE 1/4" = 1'-0"

M50.2

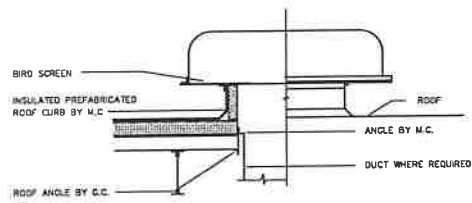


RENOVATION PLAN - MECHANICAL ROOM
 1/4" = 1'-0"



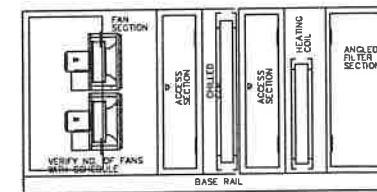
PIPE SUPPORT @ ROOFTOP

NO SCALE



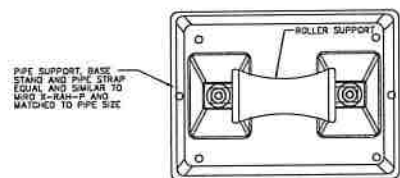
ROOF HOOD

NO SCALE



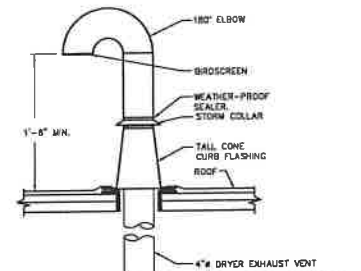
AHU SCHEMATIC

NO SCALE



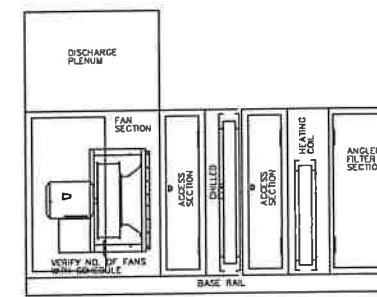
PIPE SUPPORT

NO SCALE



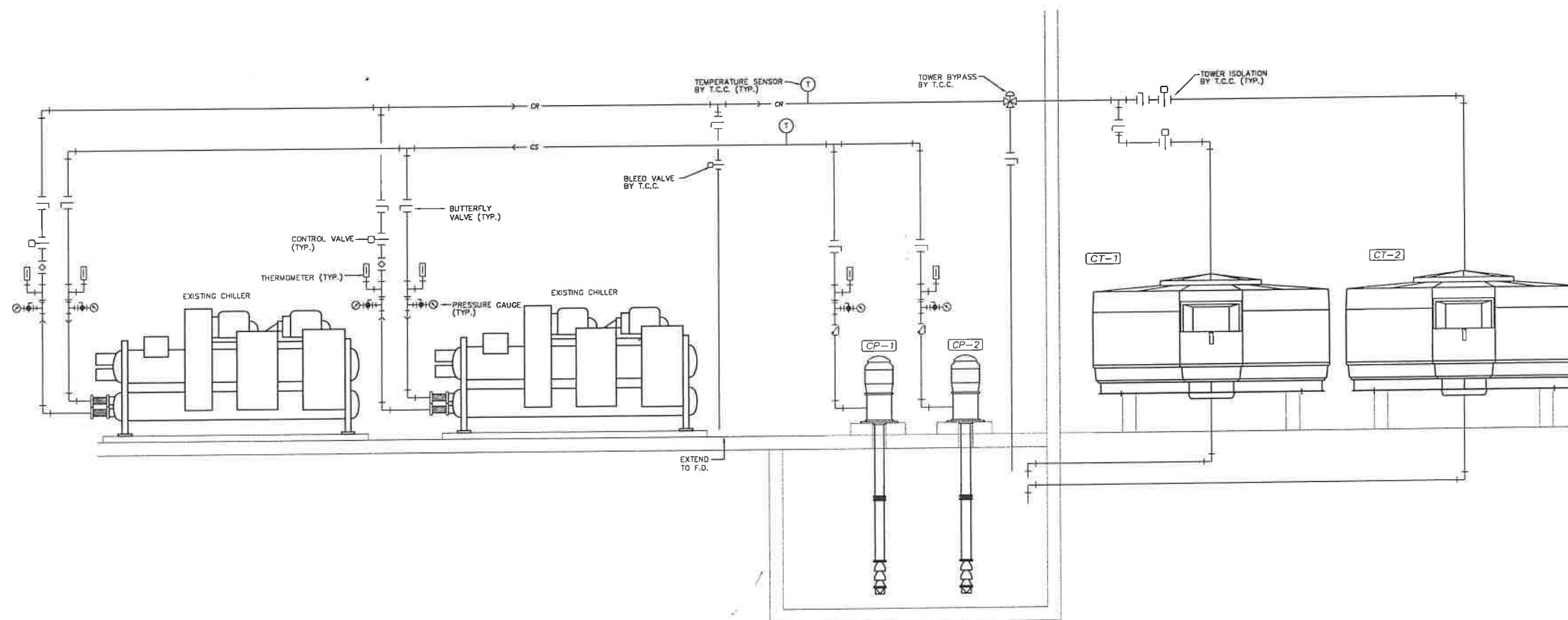
DRYER EXHAUST VENT ROOF CAP DETAIL

NO SCALE



AHU SCHEMATIC

NO SCALE



CONDENSER WATER PIPING SCHEMATIC

NO SCALE

Revisions

△	
△	
△	
△	

Project Number
SJCF 5098.00

Date

MAY 2014
MECHANICAL
DETAILS