



PANDA EXPRESS, INC.
1683 Walnut Grove Ave.
Rosemead, California
91770
Telephone: 626.799.9898
Facsimile: 626.372.8288

All ideas, designs, arrangements and plans indicated or represented by this drawing are the property of Panda Express Inc. and were created for use on this specific project. None of these ideas, designs, arrangements or plans may be used by or disclosed to any person, firm, or corporation without the written permission of Panda Express Inc.

REVISIONS:

- ▲ CITY COM. RESPONSES #1 08-19-22
- ▲ CITY COM. RESPONSES #2 09-07-22

ISSUE DATE:

DRAWN BY: rtm

PANDA PROJECT #: S8-22-D20060

PANDA STORE #: D20060

ARCH PROJECT #: 21167.000



Heights Venture
ARCHITECTURE DESIGN

HOUSTON 1111 North Loop West, Suite 800 Houston, Texas 77008
DALLAS 5717 Legacy Drive, Suite 240 Plano, Texas 75024
713 869 1103 V 972 450 7292 V

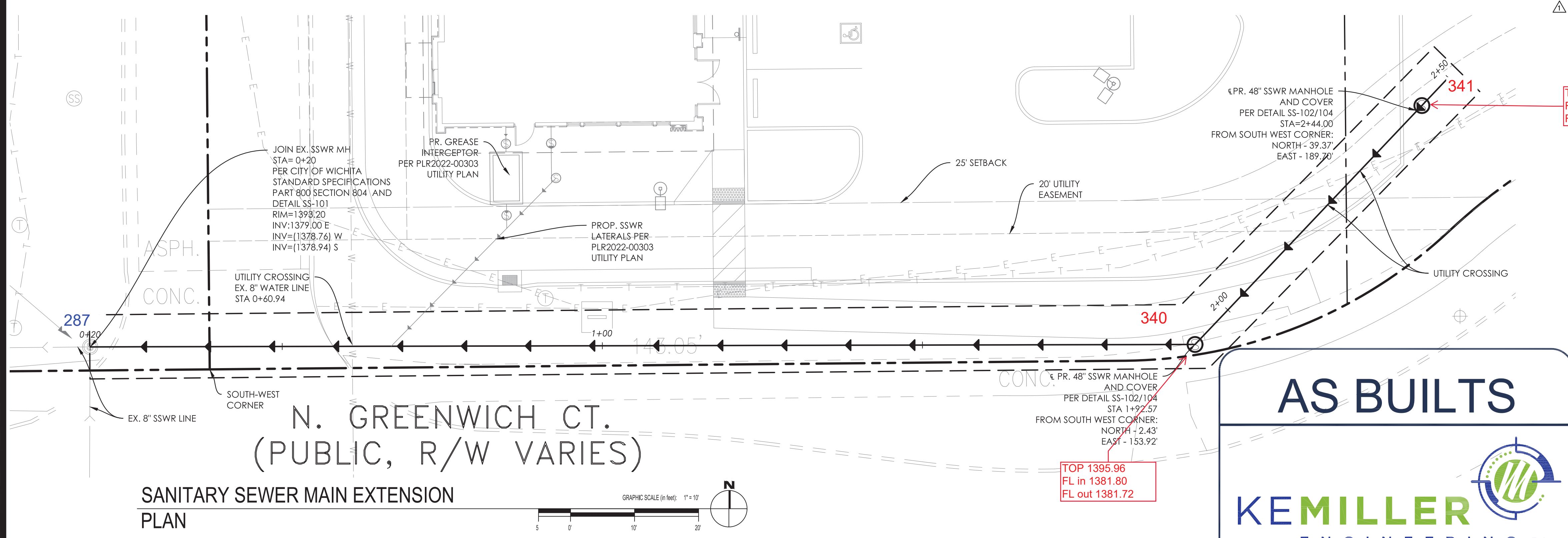
PANDA EXPRESS

GREENWICH COURT
WICHITA, KS 67226

PPS
PLAN AND
PROFILE
C01.1

GREENWICH COURT

PERMIT SET

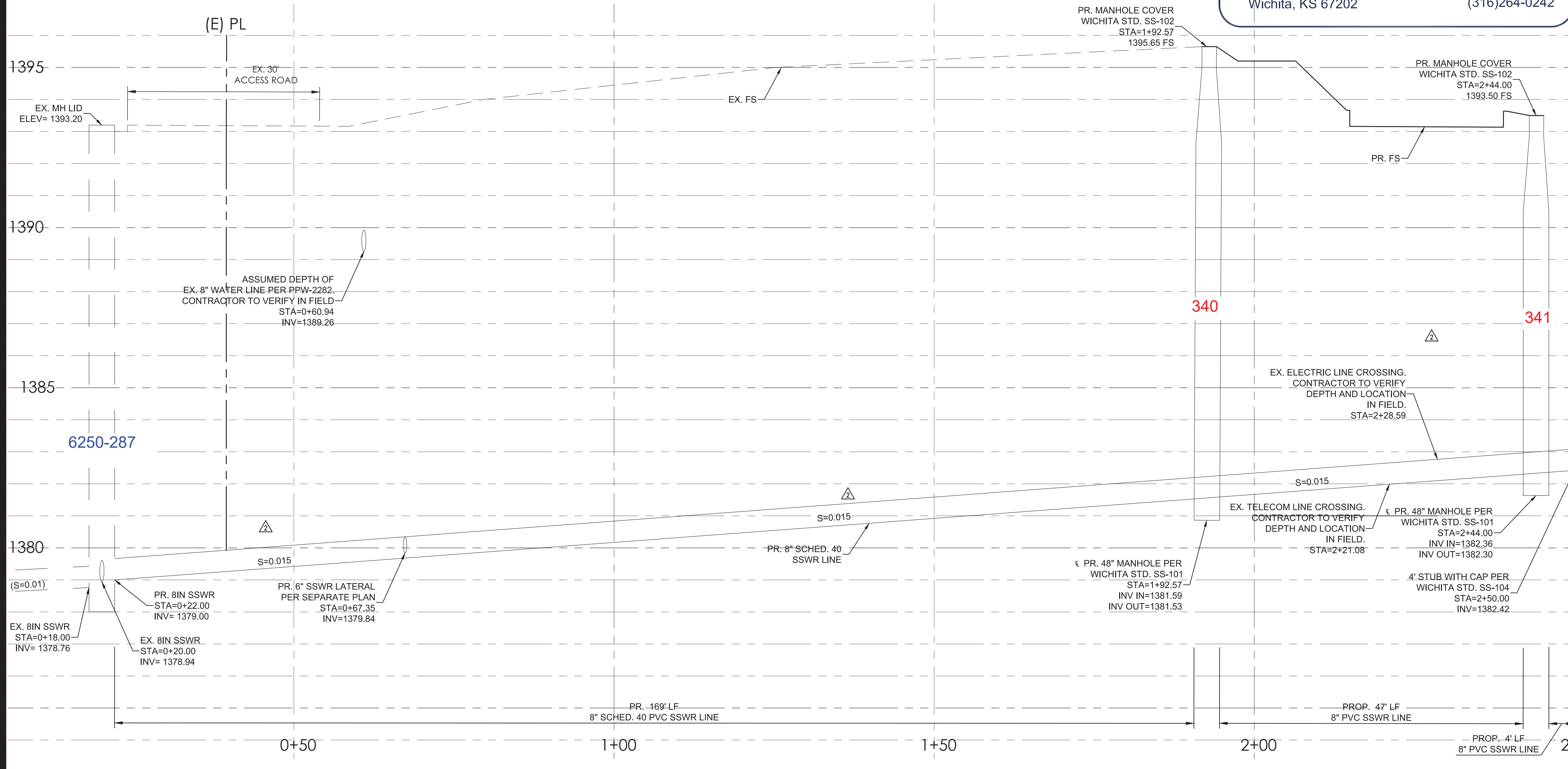


LEGEND:

- | | |
|---|----------|
| EXISTING | PROPOSED |
| SANITARY SEWER | → |
| SANITARY SERVICE | → |
| STORM SEWER | → |
| STORM SERVICE | → |
| WATERMAIN | — W — |
| GAS MAIN | — G — |
| TELEPHONE LINE | — TV — |
| ELECTRIC LINE | — E — |
| OVERHEAD WIRES | — OH-W — |
| CATCH BASIN/INLET | ■ ○ |
| STORM MANHOLE | ⊙ |
| SANITARY MANHOLE | ⊗ |
| VALVE BOX/VAULT | ⊕ |
| FIRE HYDRANT | ⊙ |
| B-BOX | ⊙ |
| LIGHTS (SEE BLDG PLANS) | ☆ |
| UTILITY BOX (ELEC, TELE) | ⊞ |
| ELECTRIC METER | ⊞ |
| REMOVE AND REPLACE EX. CURBS, WALKWAYS, PAVEMENT, VEGETATION ETC. MATCH IN KIND AS NEEDED. SEE NOTE 13 ON SHEET C01.0 | ⊞ |

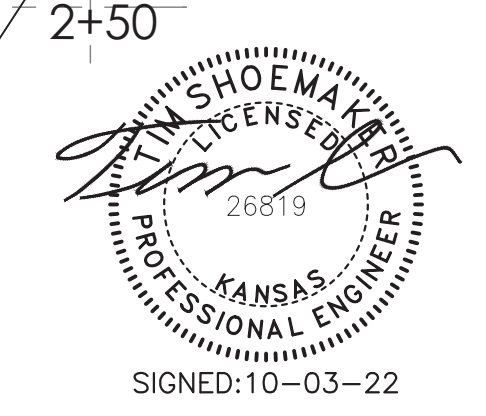
NOTES:

- EX. ITEMS SHALL BE FIELD VERIFIED. RELOCATION OR ADJUSTMENT MAY BE NEEDED. CONTRACTOR TO VERIFY.
- CONTRACTOR SHALL VERIFY ALL WORK, INCLUDING BUT LIMITED TO, SIZES, MATERIALS AND LOCATION, WITH UTILITY COMPANIES PRIOR TO INSTALLATION.
- VERIFY SERVICE LOCATIONS WITH BUILDING PLANS PRIOR TO CONSTRUCTION AND NOTIFY ENGINEER OF ANY DISCREPANCIES.
- REFERENCE PART 800 AND 00 OF CITY OF WICHITA SPECIFICATIONS FOR ALL SANITARY AND WATER PIPE SPECIFICATIONS.
- ALL UTILITY TIE DIMENSIONS ARE FROM CENTER OF UTILITY AND TO BACK OF CURB WHEN TIED TO CURB LINES, UNLESS OTHERWISE NOTED.
- CONTRACTOR TO INSPECT EXISTING SEWER AT POINT OF CONNECTION. CONTRACTOR TO VERIFY THAT EXISTING PIPE IS IN GOOD WORKING CONDITION. CONTRACTOR TO REPAIR AS REQUIRED.
- CONTRACTOR TO NOTIFY OWNER/ENGINEER IF CONFLICTS OCCUR.
- NEW OPENING/CONNECTIONS TO EXISTING MANHOLE/STRUCTURES SHALL BE CORE-DRILLED.
- TEST PITS MUST BE EXCAVATED IN ADVANCE OF CONSTRUCTION IN ORDER TO CONFIRM DEPTH AND LOCATION OF EXISTING UTILITIES. NO ADDITIONAL PAYMENT WILL BE MADE FOR TEST PIT EXCAVATION.
- ALL UTILITY CONSTRUCTION SHALL BE IN ACCORDANCE WITH THE CITY OF WICHITA PUBLIC UTILITIES AND CROSS CONNECTION CONTROL REGULATIONS AND STANDARDS.
- THE CONTRACTOR SHALL OBTAIN AND PAY FOR ALL INSPECTIONS, CERTIFICATIONS, EQUIPMENT ETC., THAT MAY BE REQUIRED. PPS MUST BE REVIEWED AND APPROVED BY A LICENSED P.E. FROM THE STATE OF KANSAS.
- CONTRACTOR SHALL COORDINATE GAS, ELECTRIC AND TELEPHONE CONDUIT, PIPING, AND CONDUCTOR REQUIREMENTS WITH MEP PLANS AND UTILITY PROVIDER PRIOR TO INSTALLATION.
- TRENCH TO BE BACK FILLED WITH FLUSHED AND VIBRATED SAND PER CITY OF WICHITA STANDARDS



SANITARY SEWER MAIN EXTENSION - PROFILE

GRAPHIC SCALE (in feet)
HORIZONTAL: 1" = 10'
VERTICAL: 1" = 2'



SIGNED: 10-03-22