

# 3RD ST. DRAINAGE IMPROVEMENTS

WICHITA DRAINAGE CANAL TO LORRAINE

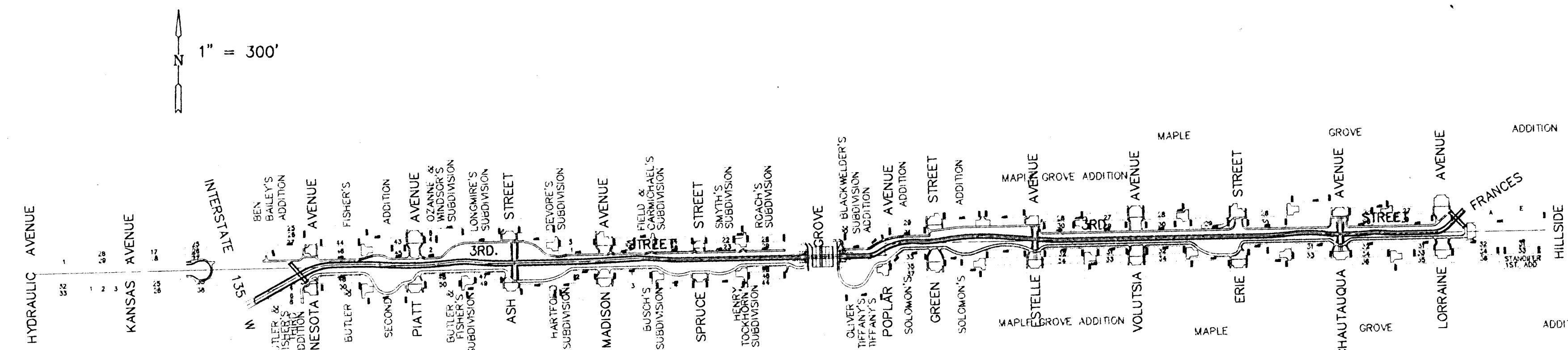
PROJ. NO. 468-82520

THE CITY OF WICHITA  
SEDGWICK COUNTY, KANSAS  
MICHAEL E. LINDEBAK, CITY ENGINEER

INDEX CODE 660563

## INDEX TO DRAWINGS

SHEET NO.	DESCRIPTION
1	TITLE SHEET
2-3	DEMOLITION PLANS
4-10	SANITARY SEWER PLAN & PROFILE
11-15	STORM WATER SEWER PLAN & PROFILE
16-23	CHANNEL PLAN & PROFILE
24-33	PAVING PLANS
34-40	SIDEWALK/PATHWAY LAYOUT PLAN
41-42	PEDESTRIAN BRIDGE LAYOUT/DETAILS
43-49	LANDSCAPE PLANS
50-51	SANITARY SEWER MANHOLE DETAILS
52	STORM WATER SEWER INLET DETAIL
53	CHANNEL DETAILS
54	CHANNEL GABION ELEVATION LAYOUT
54A-B	PROFILES EMERGENCY ACCESS LANES
55-58	R.C.B. DETAILS
59	HANDRAIL DETAIL
60	TRAFFIC BARRIER DETAIL
61-61A	GENERAL NOTES & PAVING DETAILS
62-62A	LANDSCAPE DETAILS
63-77	CHANNEL CROSS SECTION



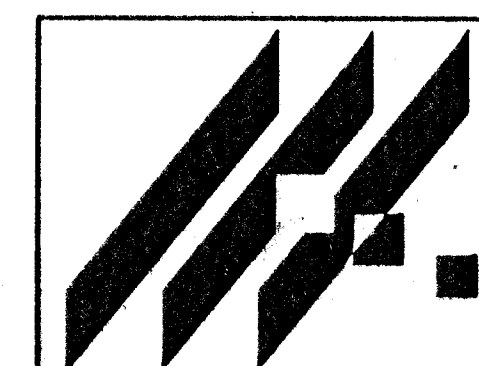
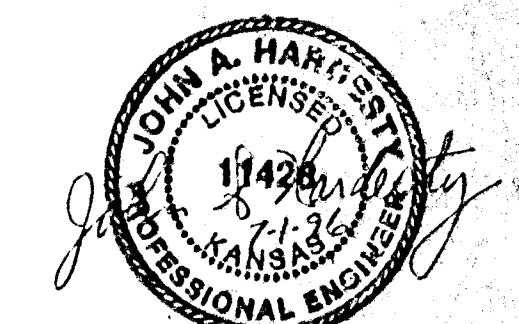
*San. Sewer  
Booked  
P-138  
B-1-00  
RPL  
Per Plan*

## BENCHMARKS

- BM#1 "□" CUT ON THE SW COR. OF WATER METER VAULT UNDER NORTHBOUND LANES I-135 ON N. SIDE OF 3RD. ELEV.=112.87
- BM#2 "□" CUT ON TOP OF E. CURB ON PIATT BETWEEN HOUSE #340 & #344. ELEV.=111.20
- BM#3 "□" CUT ON TOP OF W. CURB ON ASH BETWEEN HOUSE #407 & #415. ELEV.=112.40
- BM#4 "□" CUT ON TOP OF W. CURB ON MADISON BETWEEN HOUSE #335 & #341. ELEV.=114.135
- BM#5 "□" CUT ON TOP OF W. CURB ON SPRUCE BETWEEN HOUSE #405 & #407. ELEV.=115.375
- BM#6 "□" CUT ON NW. COR. OF W. HEADWALL OF RCB ON GROVE OVER 3RD ST. ELEV.=120.625
- BM#7 "□" CUT ON TOP OF E. CURB ON GREEN BETWEEN HOUSE #406 & #410. ELEV.=119.20
- BM#8 "□" CUT ON TOP OF E. CURB ON ESTELLE BETWEEN HOUSE #351 & #355. ELEV.=122.19
- BM#9 "□" CUT ON TOP OF W. CURB ON VOLUTSIA BETWEEN HOUSE #409 & #415. ELEV.=123.79
- BM#10 "□" CUT ON TOP OF W. CURB ON ERIE BETWEEN HOUSE # 355 & #357. ELEV.=126.43
- BM#11 "□" CUT ON TOP OF E. CURB ON CHAUTAUQUA BETWEEN HOUSE #406 & #412. ELEV.=129.93
- BM#12 "□" CUT ON TOP OF W. CURB ON LORRAINE BETWEEN HOUSE #335 & #339. ELEV.=132.18
- BM#13 "□" CUT ON TOP OF W. CURB ON HILLSIDE @ SW. RCB UNDER HILLSIDE. ELEV.=137.50
- BM#14 "□" CUT ON TOP OF N. SIDE OF SIGNAL POLE BASE ON NE. COR. CENTRAL & HILLSIDE. ELEV.=144.08

## HORIZONTAL CONTROL

DESCRIPTION	LOCATION	BASILINE STATION	NORTHERLY	EASTERLY
IRON PIN	I-135	10+68.27	5422.052	3084.270
X-CUT	PIATT ST.	16+19.23	5434.880	3635.080
IRON PIN	ASH ST.	19+54.93	5412.758	3971.388
IRON PIN	MADISON ST.	22+81.08	5451.149	4296.731
IRON PIN	SPRUCE ST.	26+12.0	5458.879	4627.580
IRON PIN	POPLAR ST. (S)	32+60.17	5473.766	5275.580
IRON PIN	POPLAR ST. (N)	33+00.85	5514.440	5274.867
IRON PIN	GREEN ST.	34+74.49	5518.241	5448.466
IRON PIN	ESTELLE ST.	38+21.48	5525.870	5795.372
IRON PIN	VOLUTSIA ST.	41+76.69	5534.135	6150.486
IRON PIN	ERIE ST.	45+31.54	5542.210	6505.244
IRON PIN	CHAUTAUQUA ST.	48+86.85	5550.481	6860.458
IRON PIN	LORRAINE ST.	52+41.68	5558.789	7215.191
IRON PIN	HILLSIDE AVE.	56+04.28	5567.075	7577.696

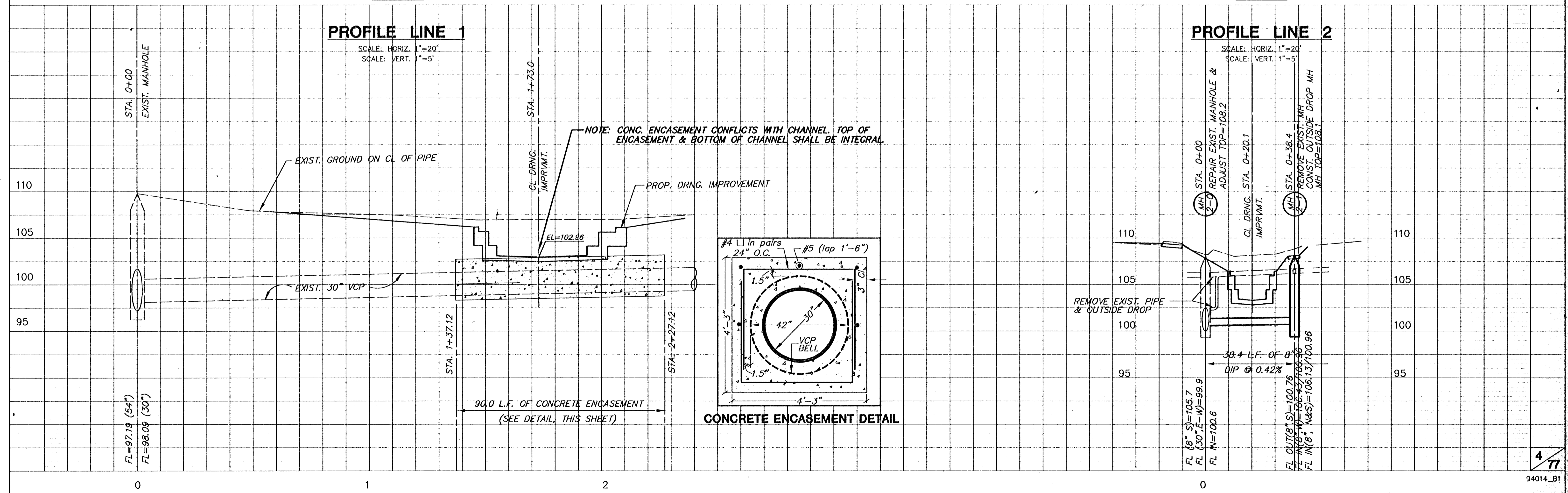
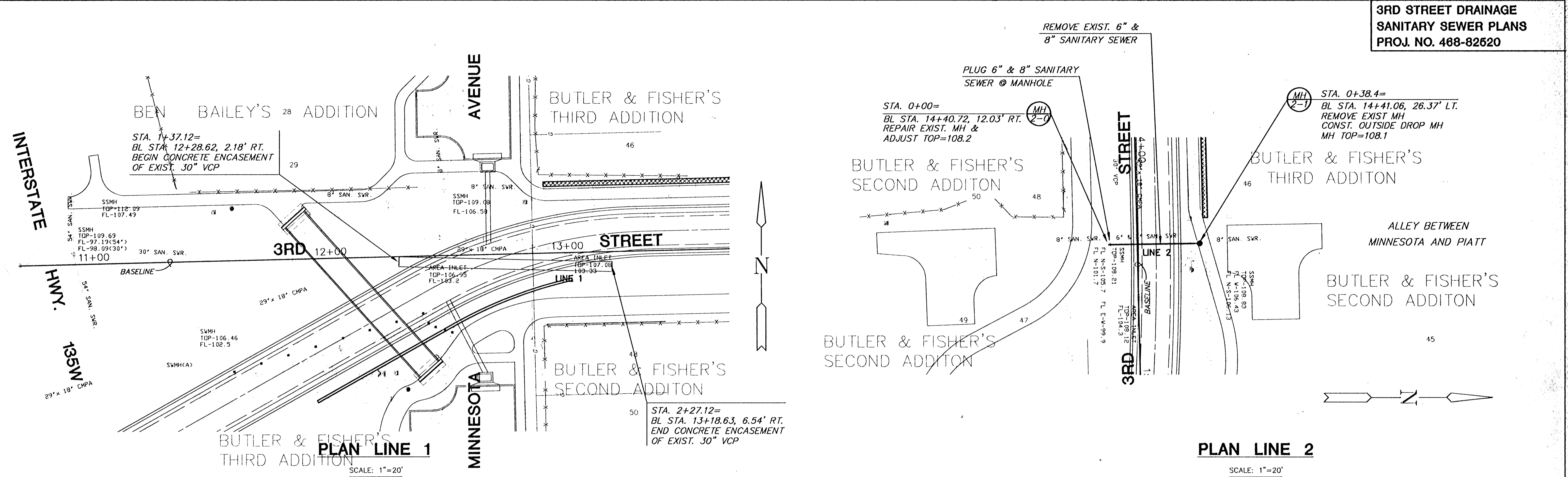


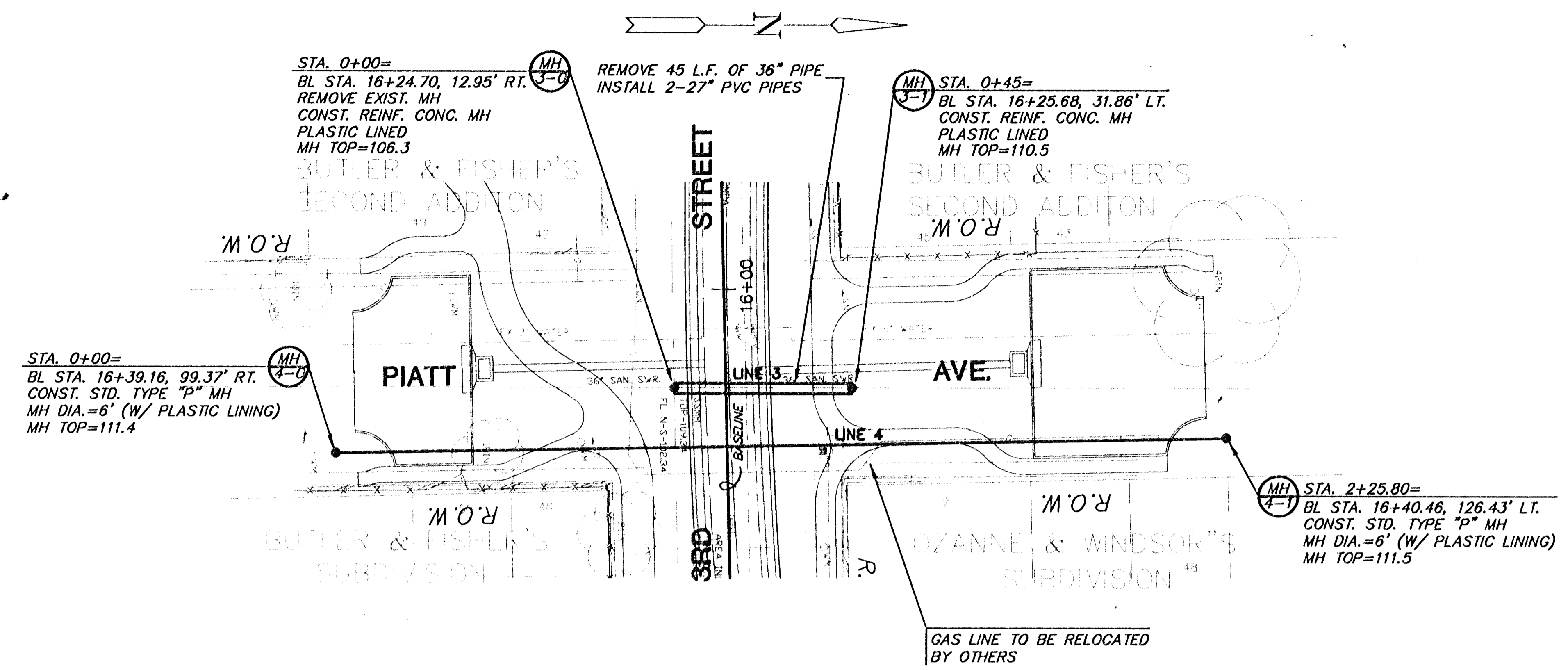
MID-KANSAS ENGINEERING  
CONSULTANTS, INC.  
411 N. WEBB ROAD  
WICHITA, KS. 67206  
316-684-2600

**AREA "K" - 3RD. STREET  
STORM WATER IMPROVEMENTS**  
PROJECT NAME

**TITLE SHEET**  
SHEET TITLE

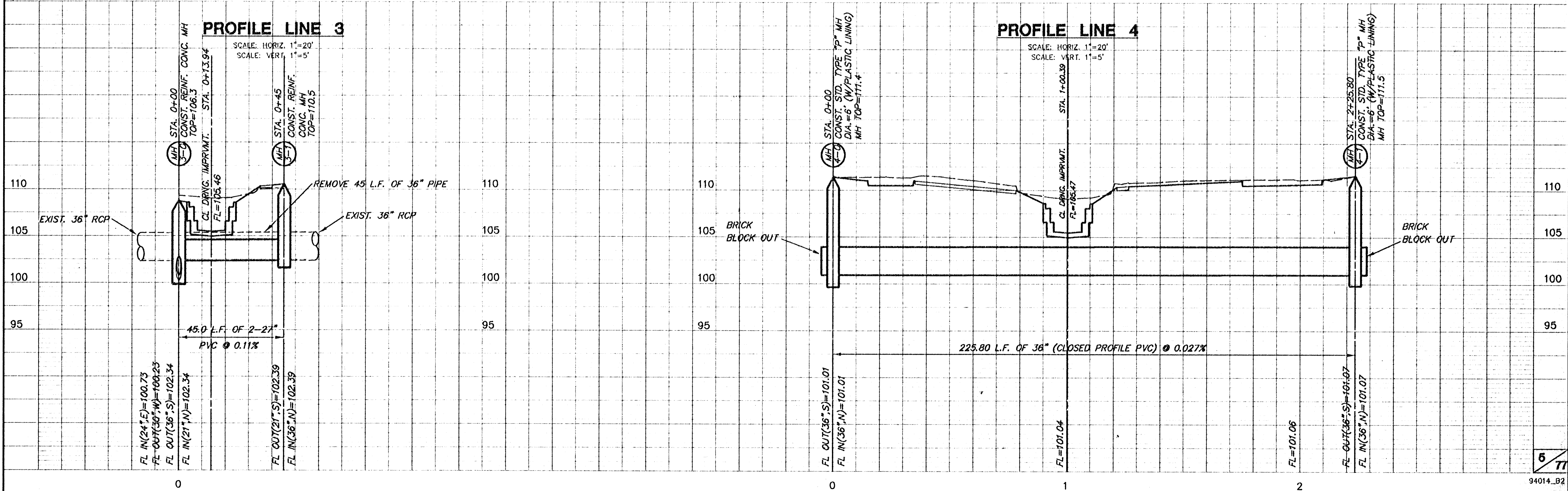
JNJ DESIGN BY. DLM, KKL DRAWN BY. JNJ CHECKED BY.  
JUNE, 1996 DATE. 93031\_DT JOB NO. 1 / 77 SHEET OF



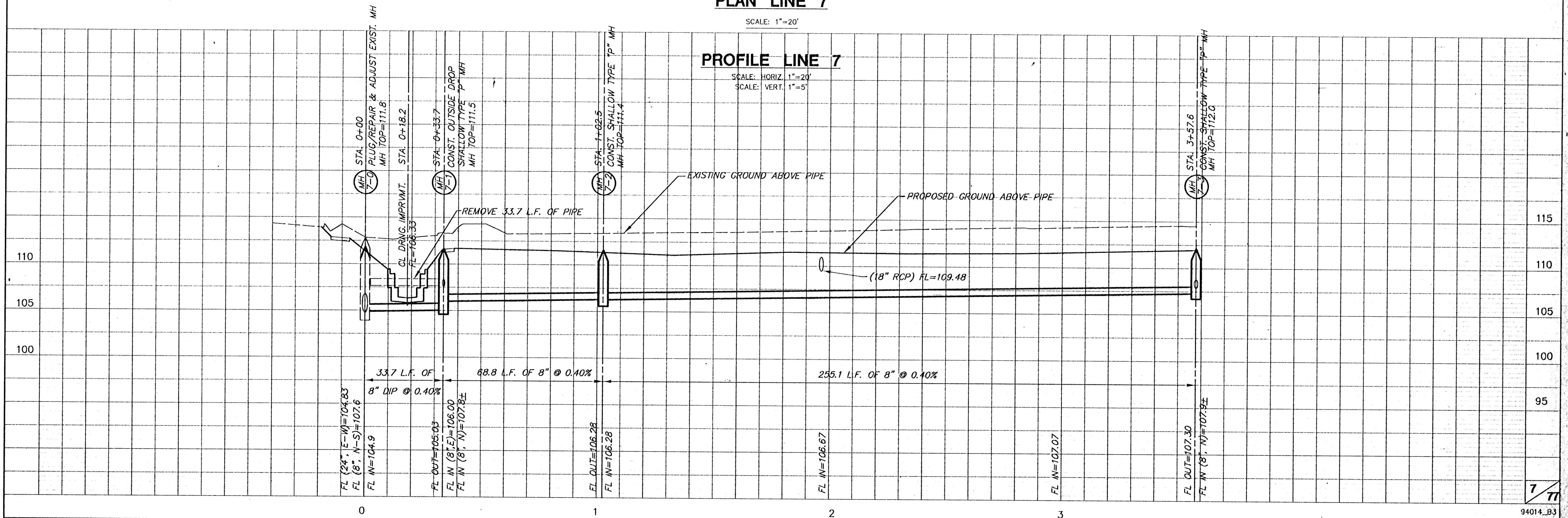
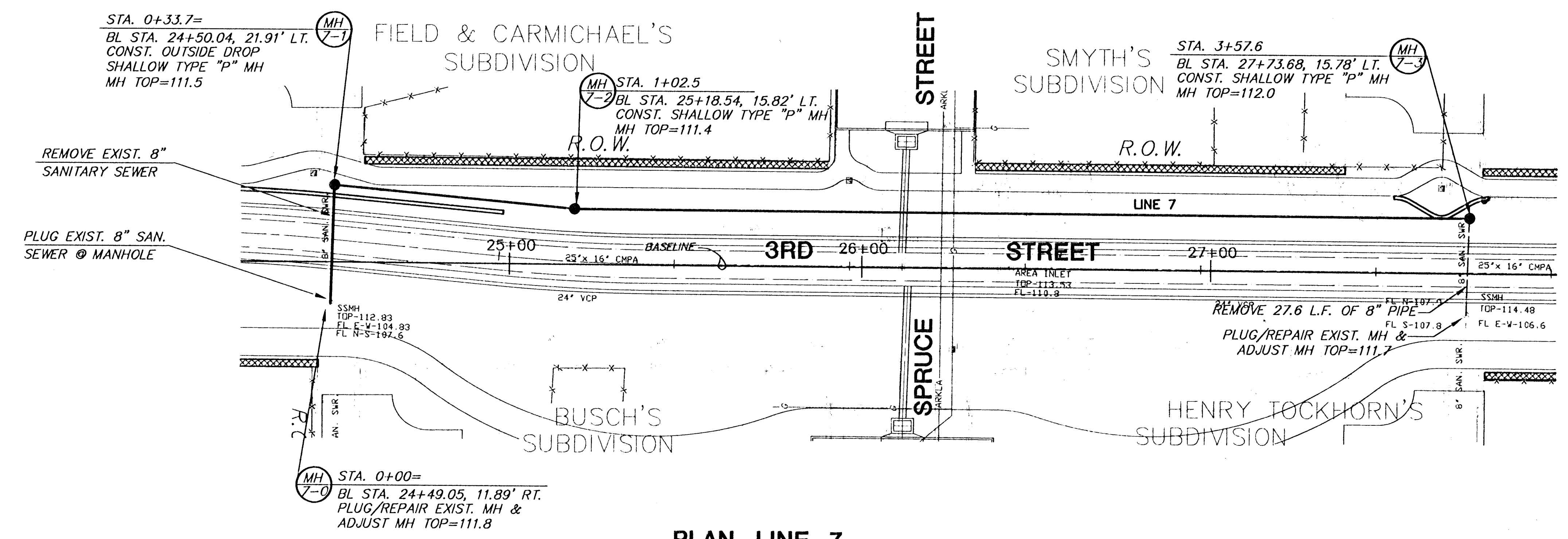


PLAN LINE 3 and 4

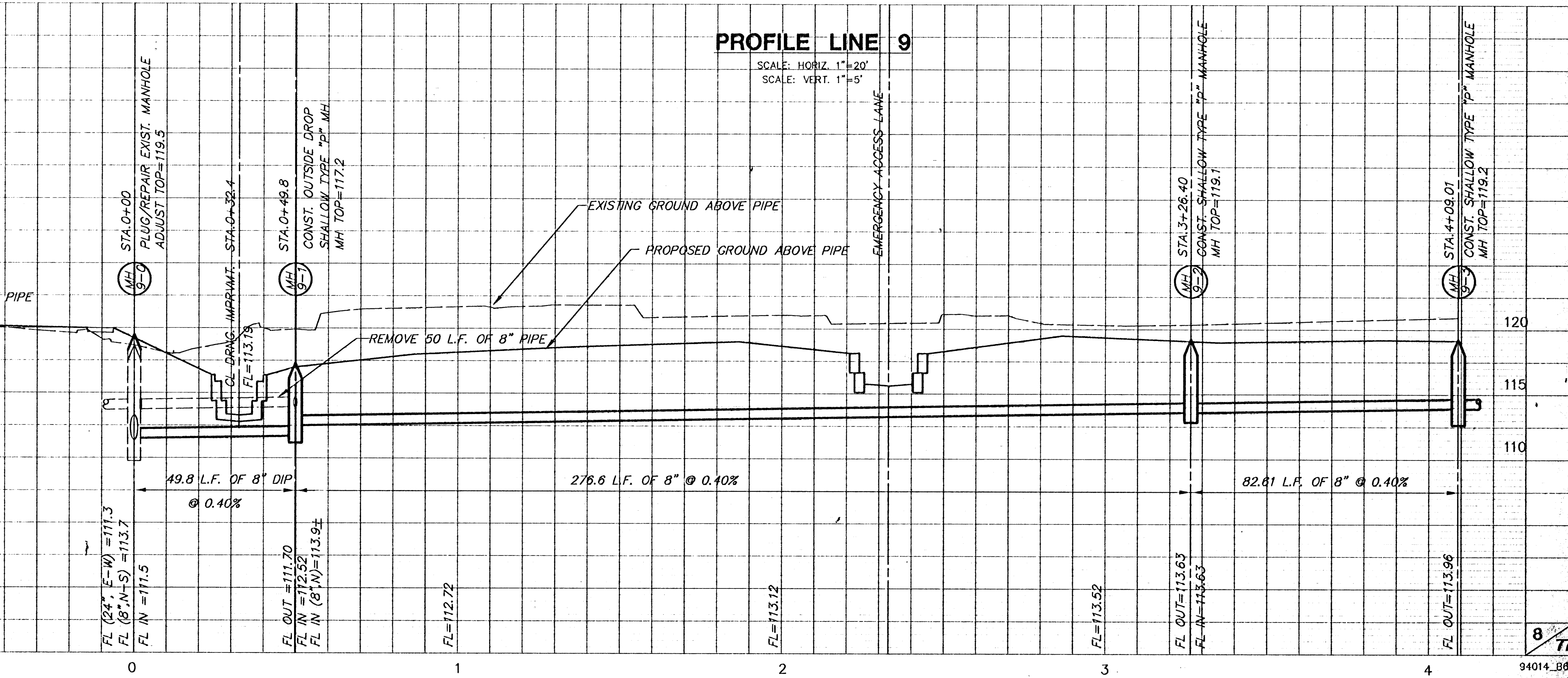
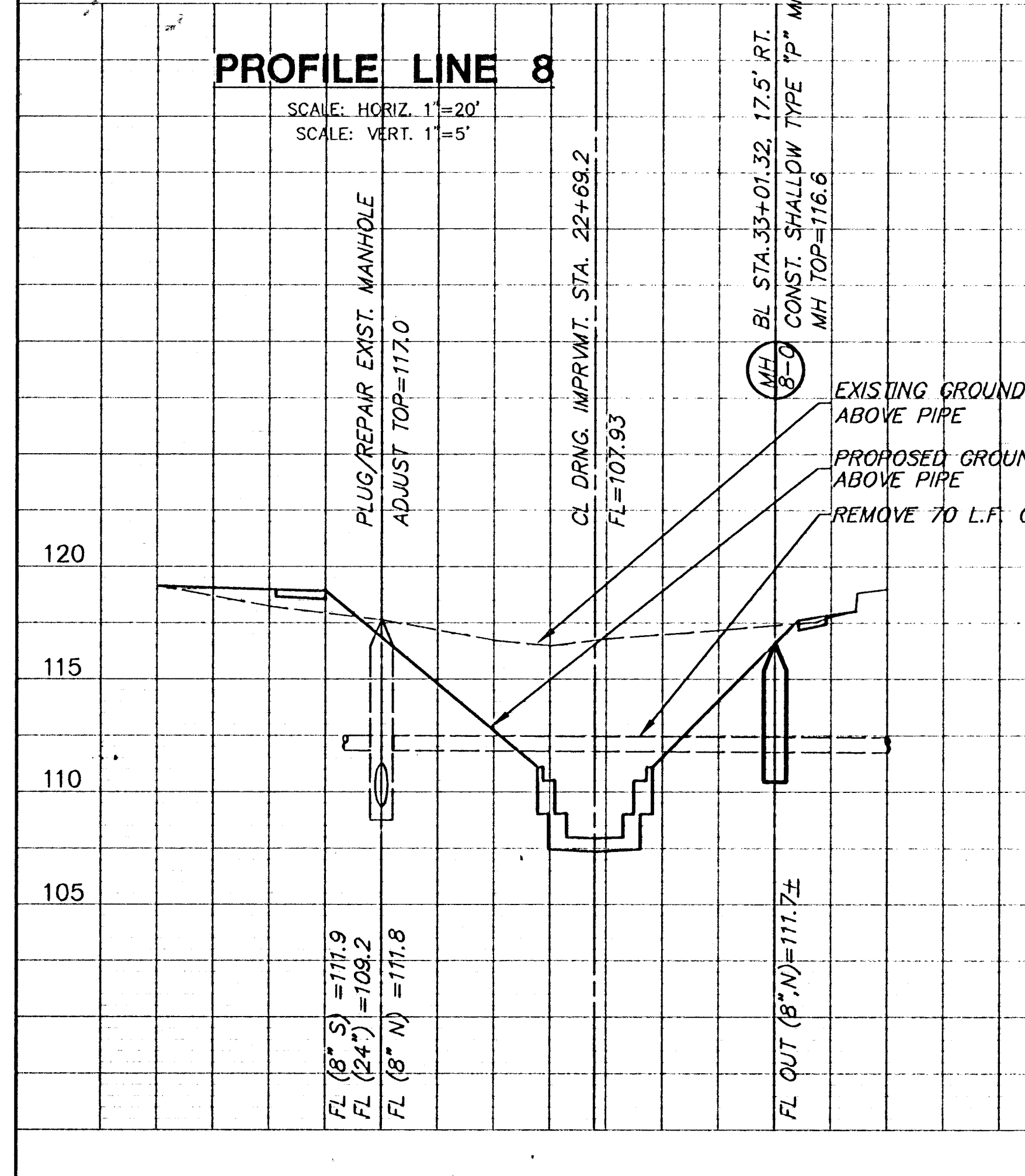
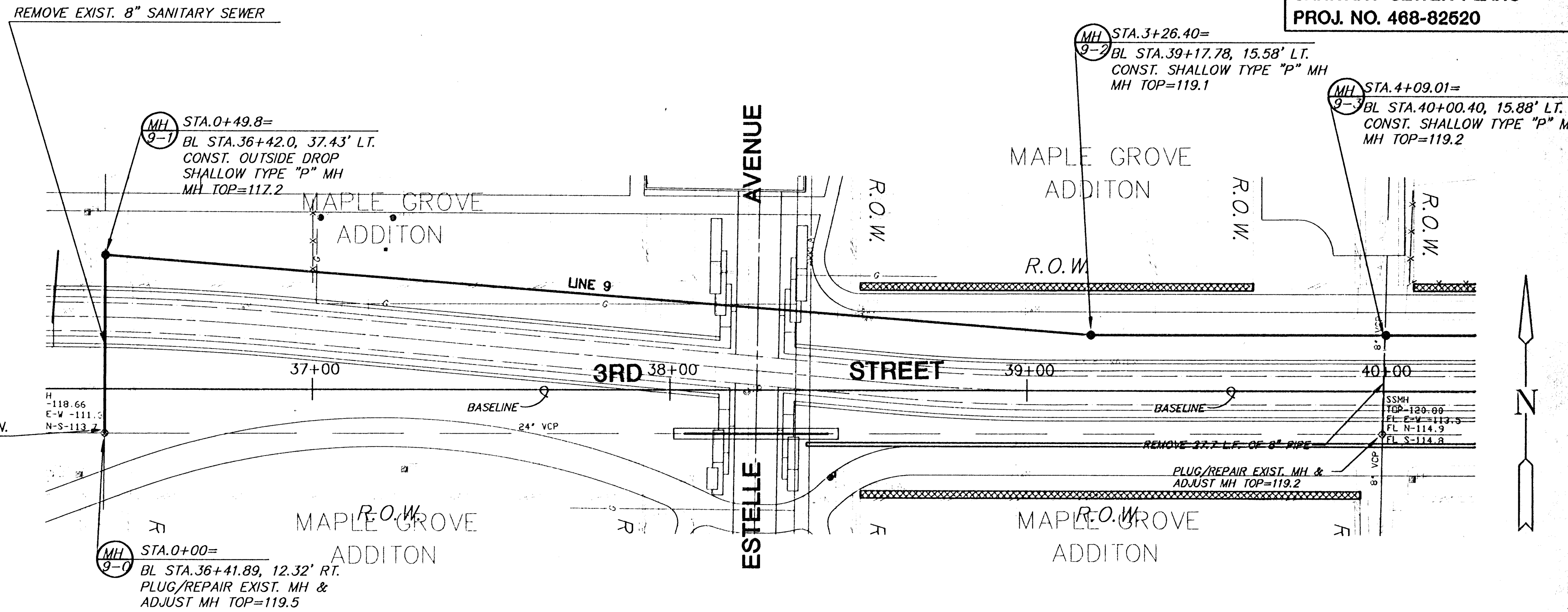
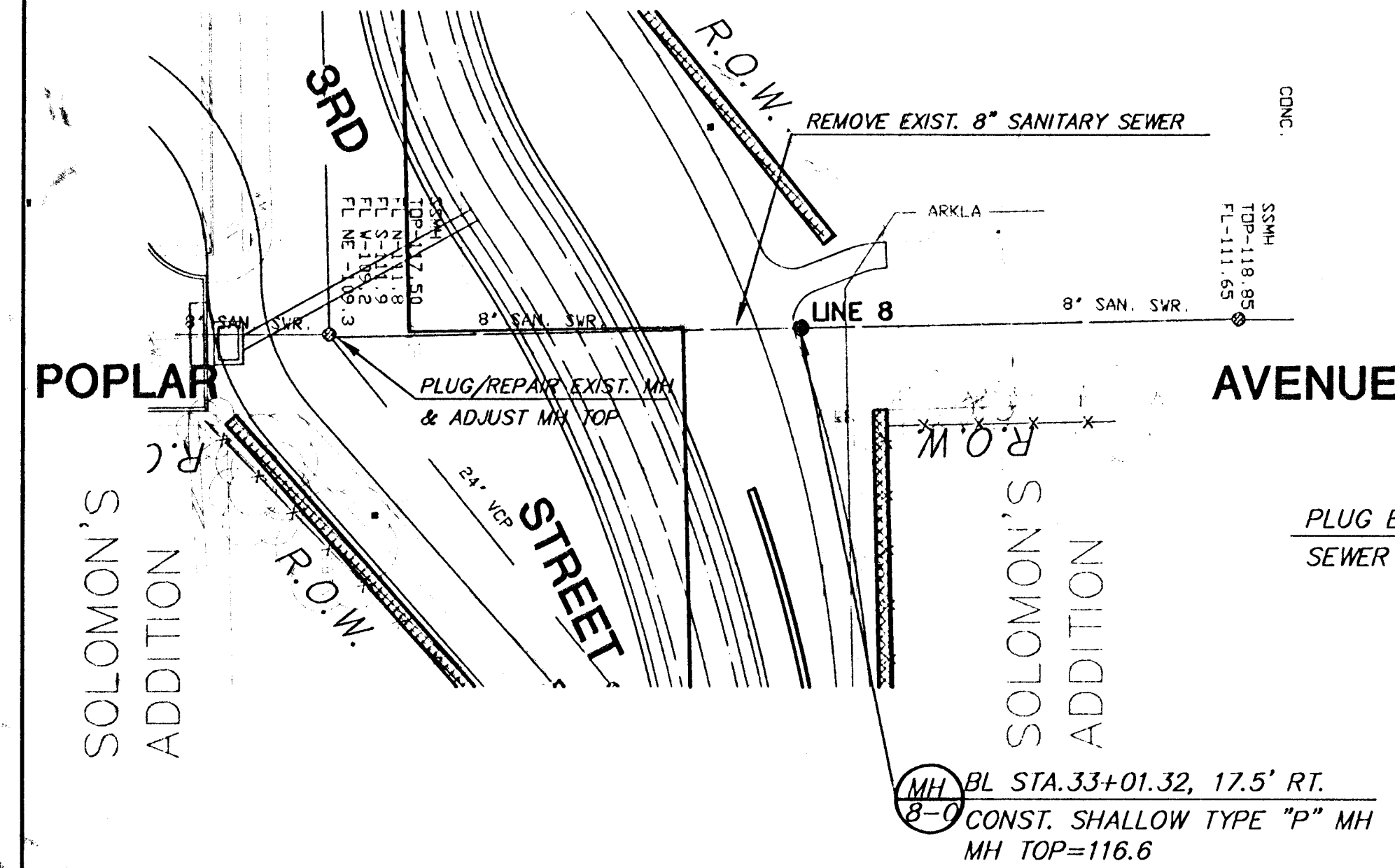
SCALE: 1"=20'

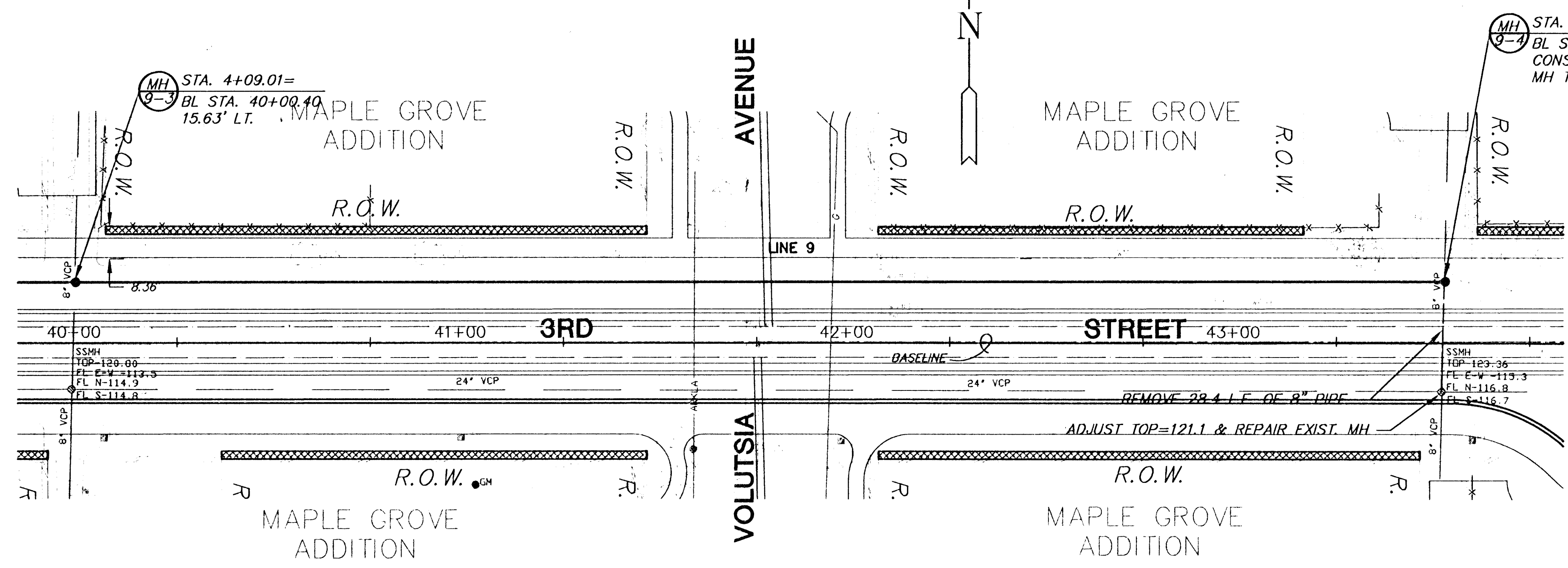




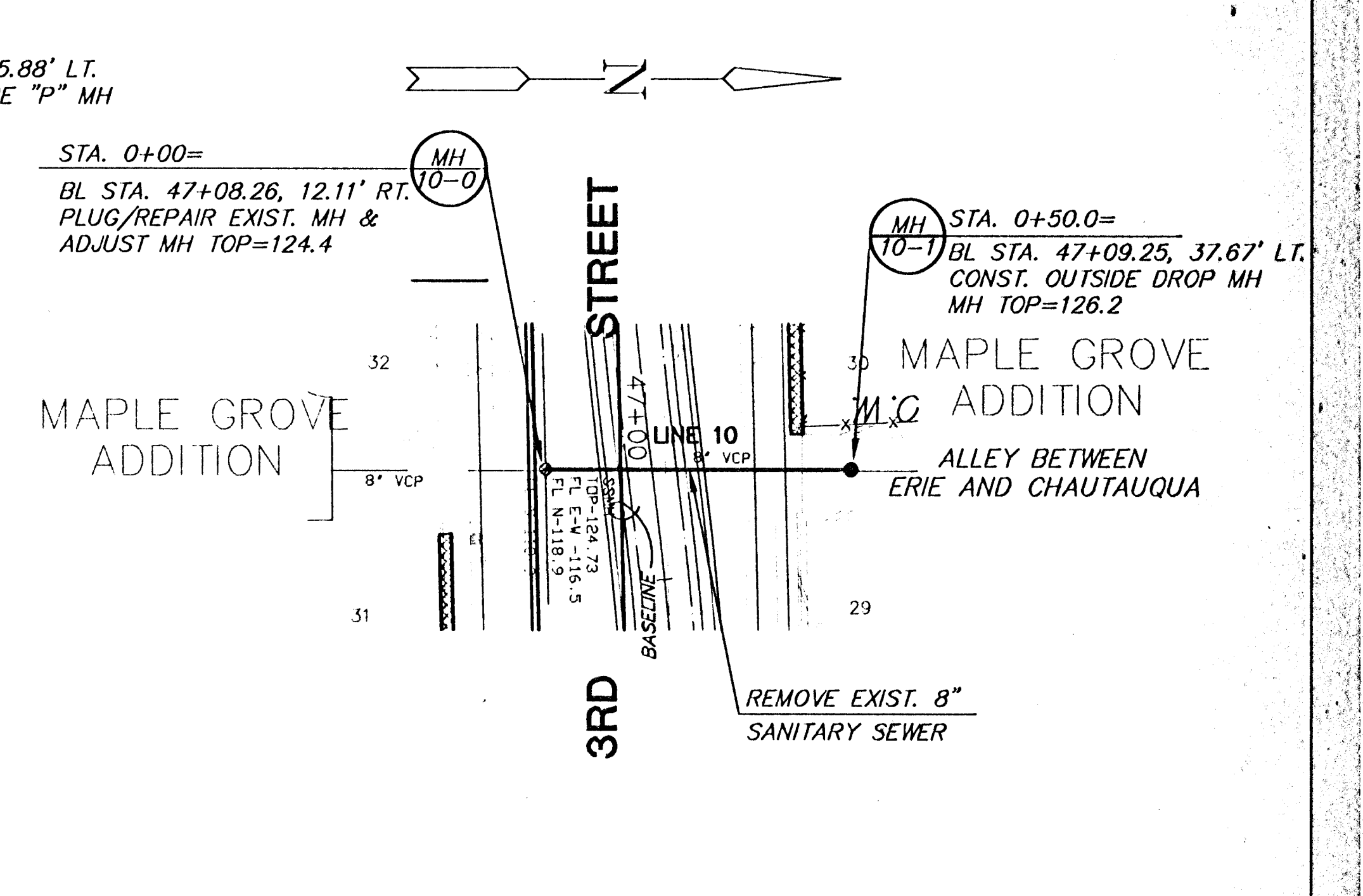


OLIVER & BLACKWELDER'S  
OF TIFFANY'S SUBDIVISION  
OF TIFFANY'S ADDITION

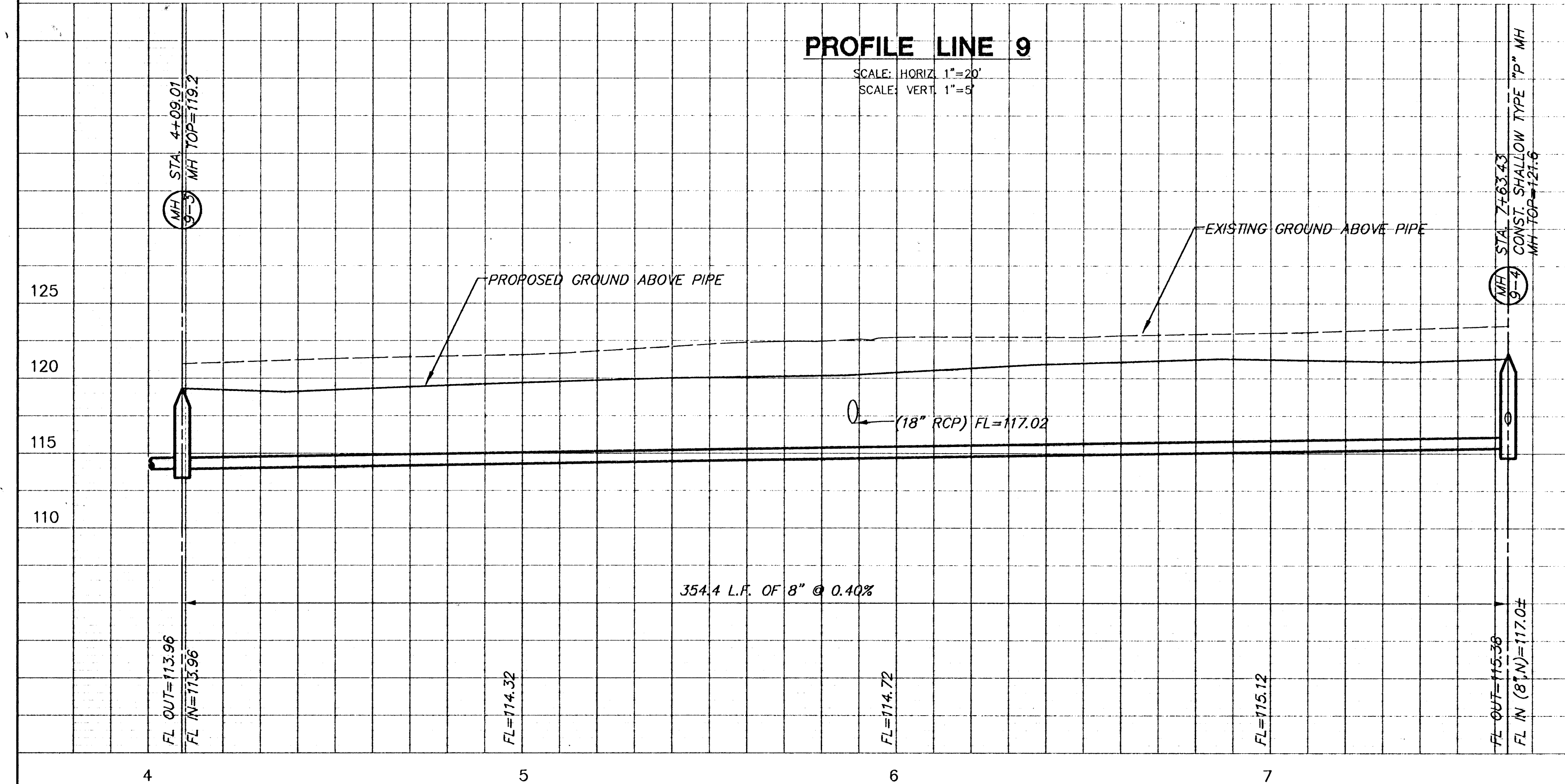




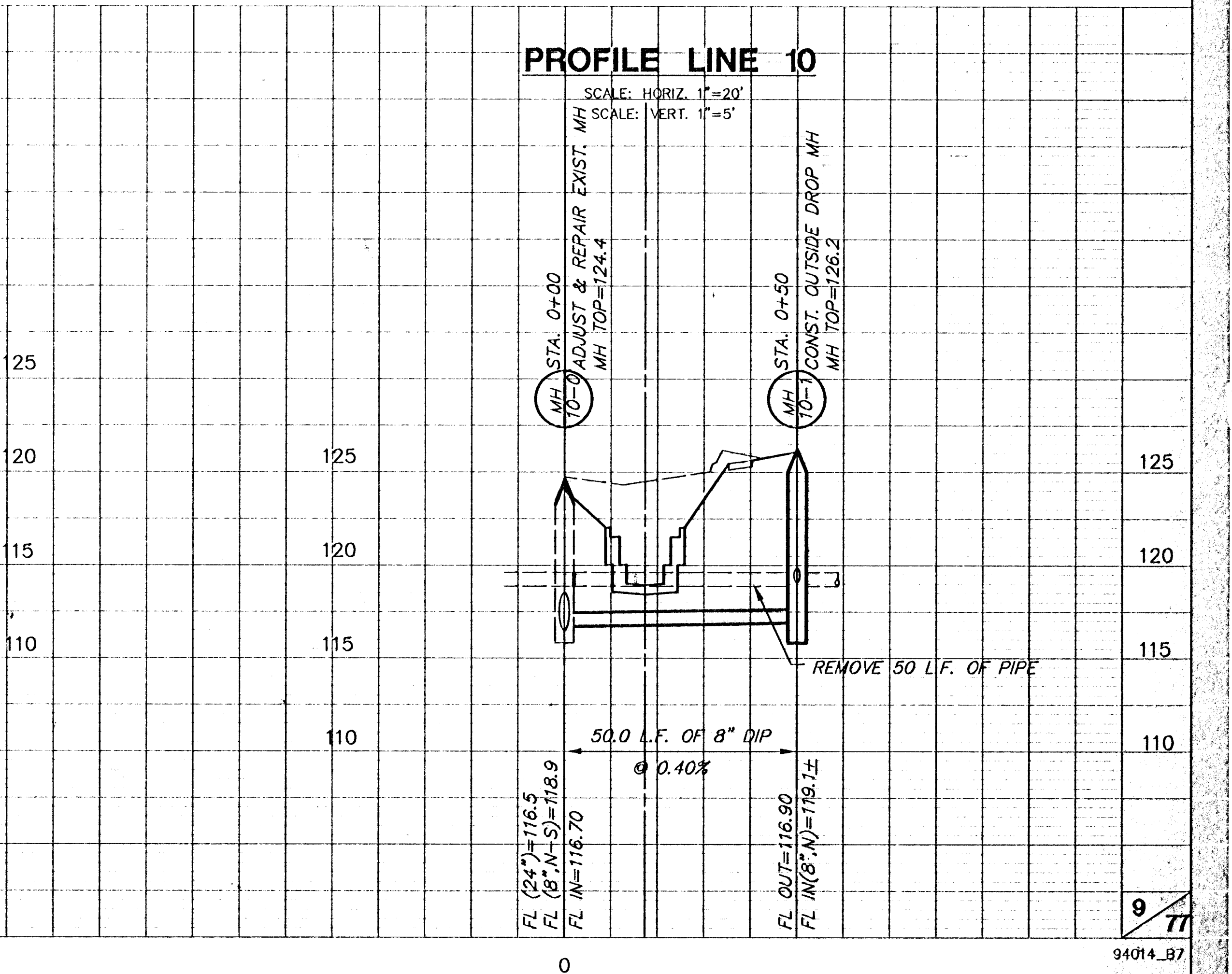
**PLAN LINE 9**  
SCALE: 1"=20'



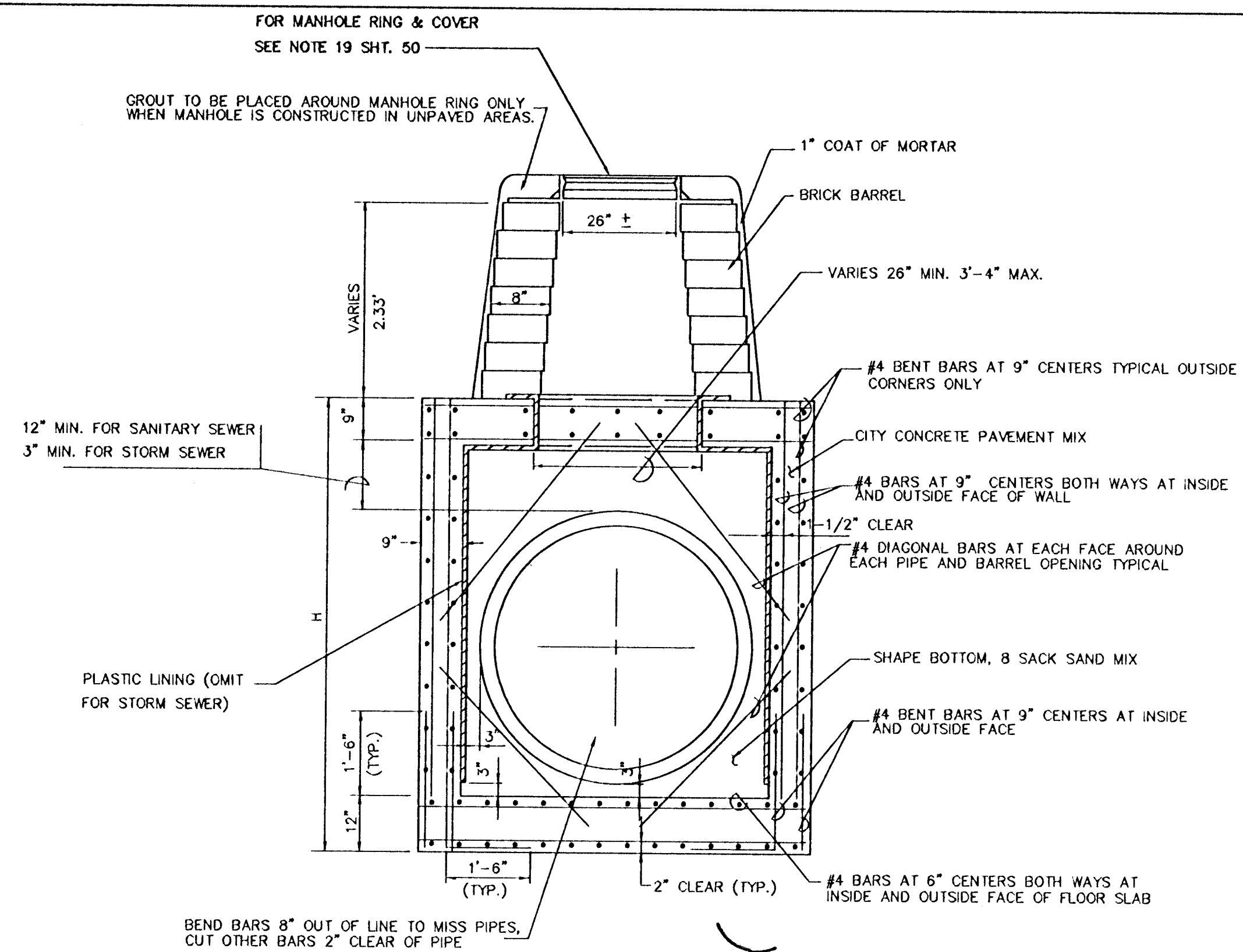
**PLAN LINE 10**  
SCALE: 1"=20'



**PROFILE LINE 9**  
SCALE: HORIZ. 1"=20'  
SCALE: VERT. 1"=5'

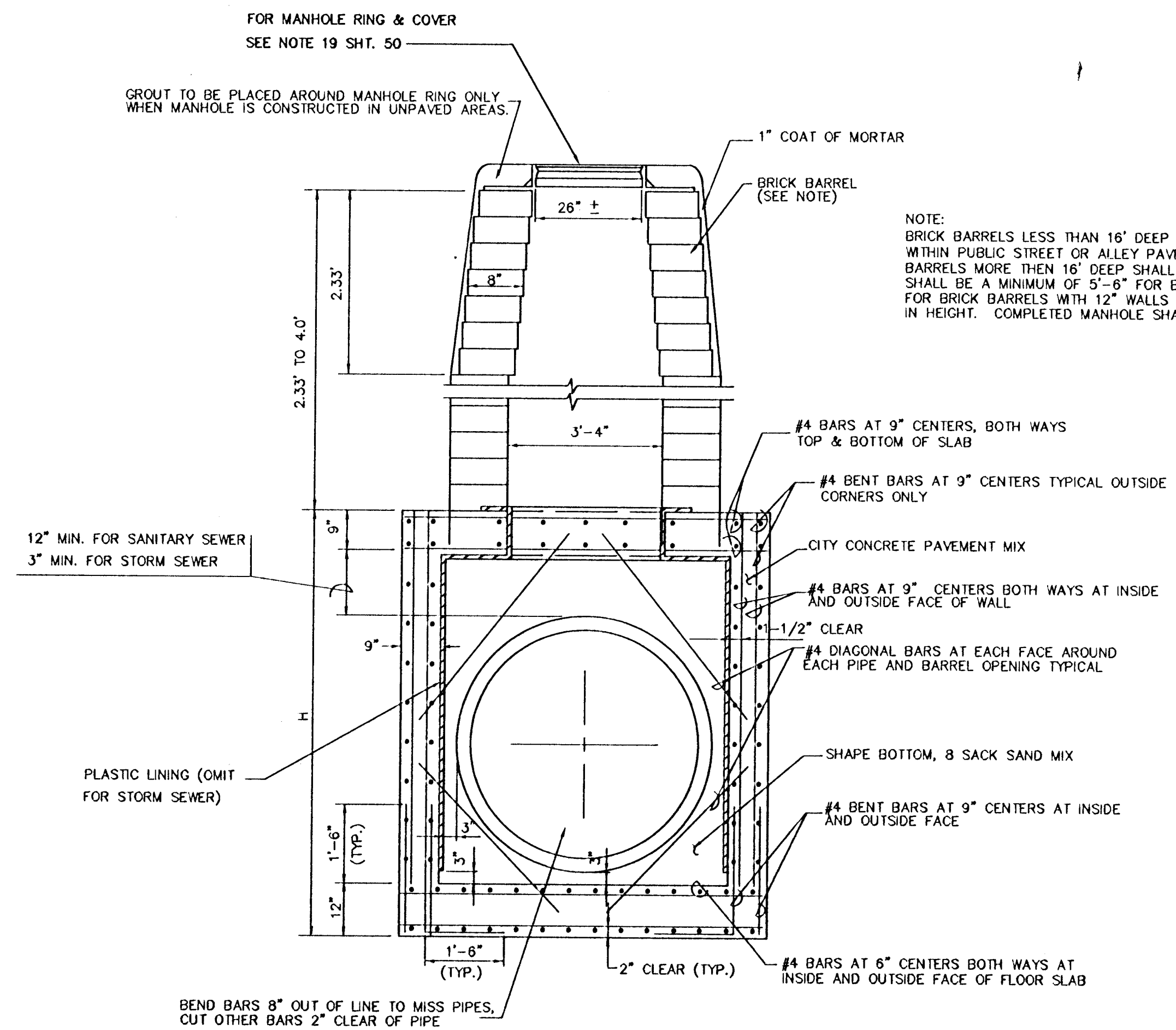


**PROFILE LINE 10**  
SCALE: HORIZ. 1"=20'  
SCALE: VERT. 1"=5'



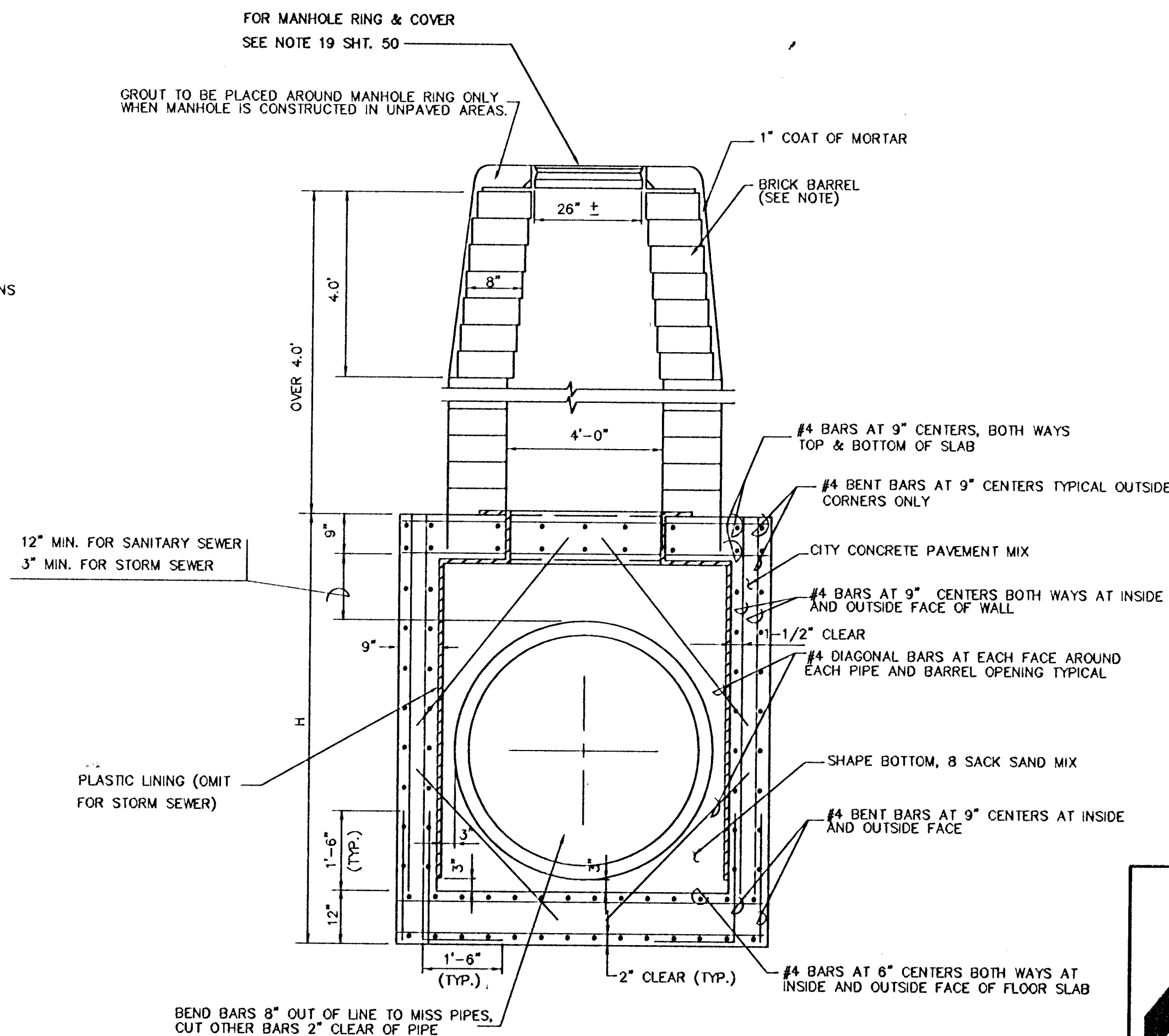
**REINFORCED CONCRETE MANHOLE**

DEPTH OF STACK: 0' TO 2.33'



**REINFORCED CONCRETE MANHOLE**

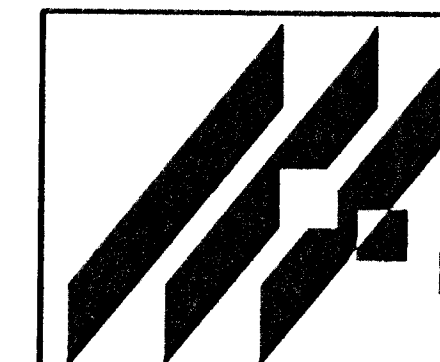
DEPTH OF STACK: 2.33' TO 4.0'



**REINFORCED CONCRETE MANHOLE**

DEPTH OF STACK: OVER 4.0'

NOTE:  
BRICK BARRELS LESS THAN 16' DEEP SHALL HAVE 8" WALLS EXCEPT WHEN LOCATED WITHIN PUBLIC STREET OR ALLEY PAVEMENT THEN THE WALL SHALL BE 12". BRICK BARRELS MORE THAN 16' DEEP SHALL HAVE 12" WALLS. THE "L" AND "W" DIMENSIONS SHALL BE A MINIMUM OF 5'-6" FOR BRICK BARRELS WITH 8" WALLS AND 6'-2" FOR BRICK BARRELS WITH 12" WALLS WHEN THE BRICK BARRELS ARE OVER 4 FEET IN HEIGHT. COMPLETED MANHOLE SHALL BE WITHOUT LEAKS AND WATERTIGHT.



**AREA "K" - 3RD STREET  
STORM WATER IMPROVEMENTS**  
PROJECT NAME

**REINFORCED CONCRETE MANHOLE**  
SHEET TITLE

MID-KANSAS ENGINEERING  
CONSULTANTS, INC.  
411 N. WEBB ROAD  
WICHITA, K.S. 67206  
316-684-9600

DESIGN BY:	DRAWN BY:	CHECKED BY:
FEB., 1996	93031	51 / 77
DATE	JOB NO.	SHEET OF



