

GENERAL NOTES:

- The Contractor shall comply with all applicable safety regulations. All construction shall be completed following current City Standard Specifications and Special Provisions.
- Contractor will be required to provide notice to utility companies a minimum of seventy-two (72) hours prior to any excavation, as follows:
Kansas One-Call 687-2470
The Contractor must notify the following in case of an emergency:
ATA&T 1-800-246-8464
Kansas High Energy 1-800-246-8464
City of Wichita Water & Sewer 1-316-268-8501
City of Wichita Stormwater 1-316-268-8501
City of Wichita Traffic 1-316-268-4034
City Communications 1-888-268-4510
Kansas Gas Service 1-888-482-4955
Electric 1-800-344-4557
- Utility service lines, poles, etc. are to be adjusted as necessary by others prior to construction unless the plans specifically call for their adjustment by the Contractor or unless the plans specifically identify a utility to be adjusted by the contractor during construction. Existing utilities that are located on the plans represent the best information available for design. The Contractor will be required to work around existing utilities with the right-of-way which do not conflict with proposed construction.
- Rubble from the removal of miscellaneous structures and excess excavation which is to be wasted shall be disposed of on site to be provided by the Contractor. Rubble piles shall be approved by the Engineer as to suitability, appearance and site location. Locations in the vicinity of manholes or other structures where appearance will not be approved. All disposal sites must be approved by the Kansas Department of Health and Environment. Material either stockpiled or disposed of in a flood plain will require a Kansas State Board of Agriculture permit. Any material dumped in waters of the United States or wetlands is subject to U.S. Corps of Engineers permitting regulations. Any material buried or stockpiled beyond approved construction limits will require additional archaeological investigations unless buried in a previously approved borrow location.
- Trees and shrubs in public right-of-way which are in direct conflict with proposed new construction shall be removed by the Contractor with the City Engineer's approval. Trees and shrubs which are not in direct conflict with proposed new construction shall be saved and protected from damage.
- The Contractor shall give all property owners and/or tenants of developed property adjoining the construction of this project a minimum of ten (10) days notice prior to start of construction.
- The Contractor shall be responsible for preserving property lines. The Contractor will be required to re-establish any property lines which are damaged or obscured by his construction operations. Such lines shall be re-established by a licensed land surveyor in accordance with state laws.
- The Engineering Division shall field locate water valves one time during construction when requested by the Contractor. It shall be the Contractor's responsibility to preserve such field locations during the construction process. Water valves, valve boxes or fire hydrants damaged during construction shall be repaired by Contractor at his own expense. Valve boxes and water meters within the project limits shall be adjusted to match final grades by the contractor.
- The Contractor shall notify the inspecting engineer and Dennis Robinson at 316-268-3740 with the City of Wichita with the anticipated construction start date and notify them of project completion. Staking and inspection for this project will be the responsibility of the Contractor.
- If traffic will be impacted by construction, a traffic control plan must be submitted and approved by the City Traffic Engineer, Mike Armour at 316-268-3740, before construction can begin. The Contractor shall be responsible for all traffic control measures to facilitate construction. All construction area markings and signs shall conform to the latest version of the Manual on Uniform Traffic Control Devices (MUTCD) as published by the US Dept. of Transportation, Federal Highway Administration. All costs associated with construction methods and signage shall be the Contractor's responsibility.
- All elevations shown are NAVD 88.
- All areas disturbed during construction that will not be under proposed pavement shall be restored to match existing conditions.


- All sidewalks, drive approach, curb, or street pavement removed to construct project must have a pavement cut permit and be replaced by the City contractor. Permits can be obtained by calling 316-268-4501 or 316-268-4480.
- All applicable fees (top, equity, in lieu of a main benefit) must be paid before any connections can be made on this project. Quotes can be obtained on fees by calling 316-268-4555.
- City Maintenance of sanitary sewer main ends at last structure within the easement or right-of-way.
- All stubs and capped pipes shall be located with green plastic tape in the same manner as risers.
- Connecting to Existing Manholes:
Prior to tying sewer lines using existing stubs in existing manholes, the Contractor shall expose and verify the location, grade and alignment of existing stubs and notify the Engineer of any deviation from the plans. Where the stub is unusable due to elevation grade or alignment, the Contractor shall remove the stub and plug the hole, and reshape the existing manhole invert to provide smooth flow. Where connecting to an existing manhole that does not have an existing stub, the Contractor shall core cut into existing manhole wall to make connection using approved water stop gasket, and reshape the existing manhole invert to provide smooth flow. The cost to connecting to existing manholes is incidental to the project.
- Contractor shall limit the extent of trench open overnight and easements to less than 50 feet.
- Contractor shall provide positive drainage away from all manhole covers.
- The Contractor shall prevent any construction debris from entering the existing sanitary sewer during construction.
- The Contractor shall be responsible for maintaining continuous flow of sewage through construction. Contractors proposed method for maintaining sewage flow shall be submitted and approved by the Sewer Maintenance Division (316-268-4071) prior to starting and/or cessing of sewage flow.
- Any over excavation from manhole and pipe removal shall be backfilled with AB-3 compacted to 90-95% ASTM D698.
- The Contractor shall protect from damage and support existing utilities through construction as approved by the utility owner and the Engineer at the contractor's expense.

Benchmarks

BM1:
Top of Curb on SW Corner of 31st Street and N Charles Ave.
Elev. = 1318.31 NAVD88

BM2:
Top of SS Man in the SE Corner of Lot 3, John Brown Addition.
Elev. = 1318.03 NAVD88

AS BUILTS

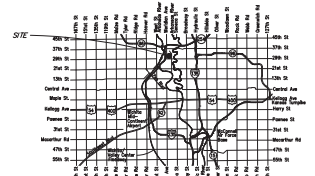
Contractor: Dutton Construction	Project Inspector: Larry Gann
8/8/2023	
117 E. Lewis, Wichita, KS 67202 (316)264-0242	

SANITARY SEWER
to serve
31st and Charles Lot Split
LOT 11 BLOCK D CALBUILT REPLAT

CITY OF WICHITA, KANSAS

Gary Janzen, P.E. City Engineer
Project Number
2022 - 039283 PPS (53030982)

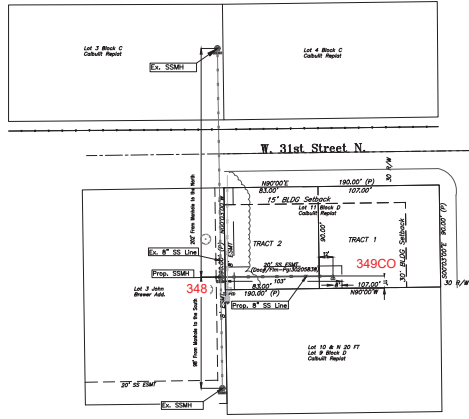
5351C
SS22-04



Vicinity Map

Sheet Index

- 1.0 Cover Sheet
- 2.0 Plan and Profile Sheet
- 2.1 Precast SS Man Detail
- 2.2 MH Frame and Cover Detail
- 3.0 Erosion Control Plan
- 3.1-3.5 Erosion Control BMP Details
- 4.0 Plat



APPROVED AS NOTED
BY WICHITA PUBLIC WORKS
ENGINEERING DIVISION

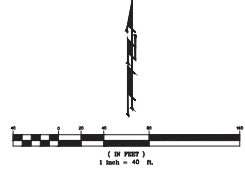
Engineering approved by Shawn Malles on this day
the 12th of December, 2022

Utilities approved by Debra Ary on this day
the 12th of December, 2022

NOTE TO CONTRACTORS

Inspection and testing for this project is to be provided by a Licensed Consulting Engineering Firm under contract with the Owner/Developer. Said inspection to be in accordance with the City of Wichita standard construction engineering practices and certified by a Licensed Professional Engineer in the state of Kansas. No work shall be performed by the Contractor without such inspection nor shall any work be commenced without written authorization by City Engineering. All Construction and Materials shall comply with the current City of Wichita Specifications and Standards and Special Provisions, (as file and available of Wichita.gov).

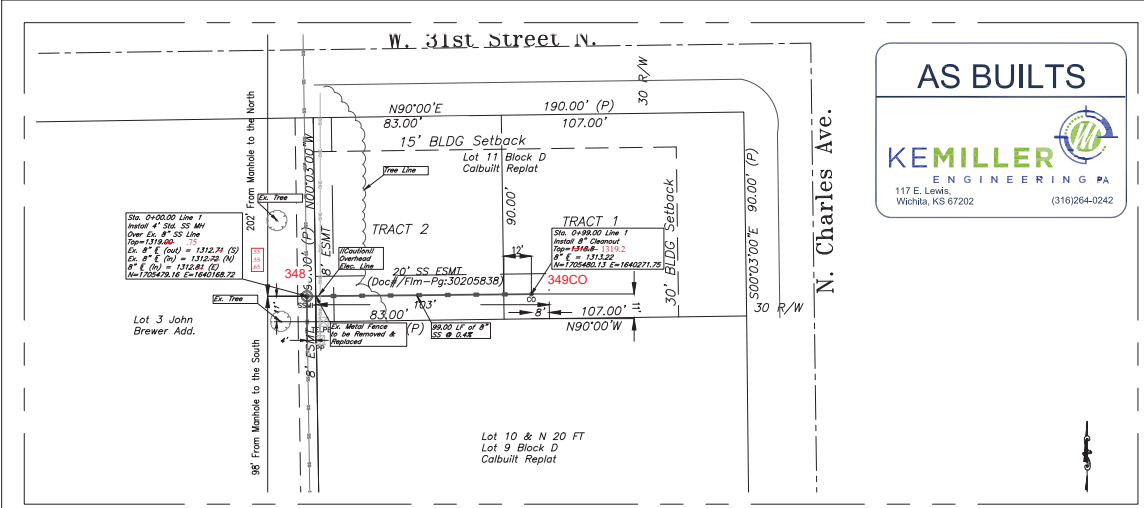
An approved copy of these plans signed by City staff are required on-site.



KEMILLER ENGINEERING

117 E. Lewis, Wichita, KS 67202 (316)264-0242

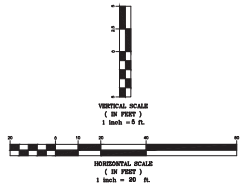
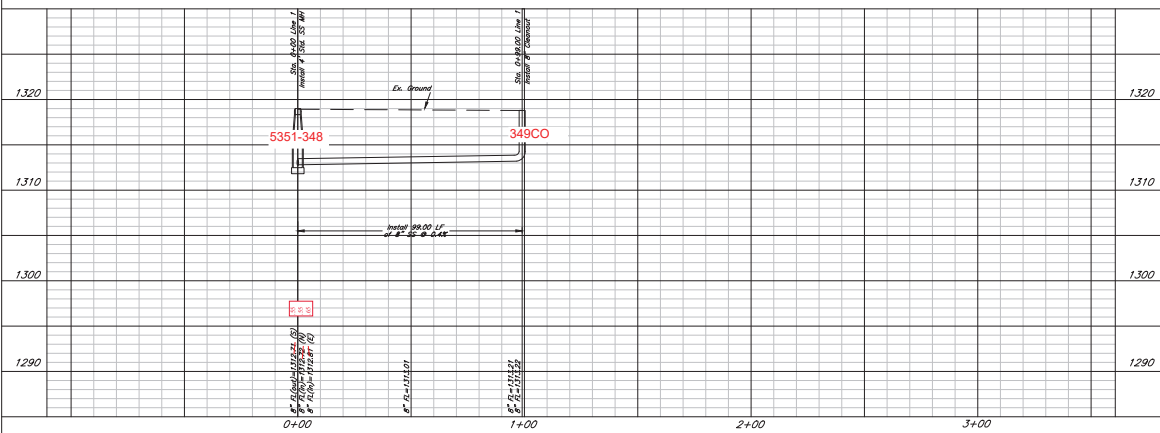
December 2022



AS BUILTS

KEMILLER
ENGINEERING PA

117 E. Lewis,
Wichita, KS 67202 (316)264-0242



31st and Charles
Plan & Profile- Line 1
Wichita, Kansas

PROJECT NUMBER		SHEET	
PW-2022-039283		2.0	
REV. NO.	FILE	DATE	REVISION
22-30	KJ	12/29/22	
DESIGN	DRAWN	CHECKED	
KJ	KJ		

KEMILLER ENGINEERING PA
117 E. LEWIS, WICHITA, KS 67202 (316)264-0242